

NEWARK POST



SCAN WITH YOUR PHONE TO VISIT OUR WEBSITE

Greater Newark's Hometown Newspaper Since 1910

103rd Year, 49th Issue ©2012

December 28, 2012

www.newarkpostonline.com

Newark, Del.

By Katy Bowman

kbowman@newarkpostonline.com

You don't have to go far to stick to those New Year's resolutions. Here are a few things you can do in Newark for a better you this year.

HIT THE TRAILS

Crisp air and scenic surroundings can help make these long nights and holiday stress bearable. A walk in one of Newark's plentiful parks and trails will lift your spirits – while also lifting a few of those extra pounds that come with all the cookies and eggnog.

For starters, check out the Pomeroy and Newark Rail Trail, a 2-mile hiking and biking trail that officially opened this fall. It runs from the Amtrak tracks on South College Avenue, north across Main Street and into White Clay Creek State Park, giving travelers a traffic-free shortcut through downtown and into the more scenic side of the city.

And speaking of White Clay Creek, it is truly beautiful in the winter. The state park boasts 37 miles of creek-side trails and areas for sledding, hunting and cross-country skiing. The Nature Center hosts many winter programs for children; to learn more about them, call 302-368-6900.

The park is making it easy to start the year off on the right foot by hosting a free First Day Hike starting at the Carpenter Recreation Area (880 New London Road, Newark) at 1 p.m. Jan. 1. Participants of all ages are welcome to join in the 4-mile group walk through the park. Call the park office to register.

Nearby Lums Pond State Park in Bear sits on nearly 1,800 acres and includes hiking trails, nature programs, snowmobile tracks, year-round camping areas and, in the warmer months, programs for boating, playing sports, picnicking and horseback riding.

Visit the Delaware State Parks website, <http://www.destateparks.com/park/index.asp>, to learn more.

And if you'd like to expand your

Ring in the New Year The Right Way

White Clay Creek is tranquil and refreshing on a recent winter morning.

NEWARK POST PHOTO BY KATY BOWMAN

surroundings, check out Fair Hill Natural Resources Management Area off Route 273 just over the state line in Maryland. It boasts 5,656 acres, trails for hiking, biking and horseback riding; campgrounds; seasonal hunting; and a nature center. The park also hosts programs year-round. For information visit <http://www.dnr.state.md.us/publiclands/central/fairhill.asp>.

TAKE IT ALL IN

Some of the world's most famous museums are just a few hours from Newark. But on those dreary winter days when you'd rather stick closer to home, it's nice to know that the city has quite a collection of its own centers for learning about local and world culture. The University of Delaware, for example, includes three galleries that are free and open to the public, including the University Gallery, in the Old College building on Main Street, which holds a collection of more than 10,000 paintings, sculp-



PHOTO BY KEN CASEY

A display case arranged by Delaware Mineralogical Society member Wayne Union is shown at the DMS's Gem, Mineral and Fossil Show in 2010.

tures and photographs.

The University's Mechanical Hall, at 30 North College Avenue, houses the Paul R. Jones Collection of African American Art – a comprehensive compilation of works from the 18th, 19th and 20th centuries.

And the recently renovated Mineralogical Museum, in Penny Hall at 255 Academy St., includes 450 specimens of minerals, including many from the duPont collection mined in the early 20th century, and more recent finds of minerals from

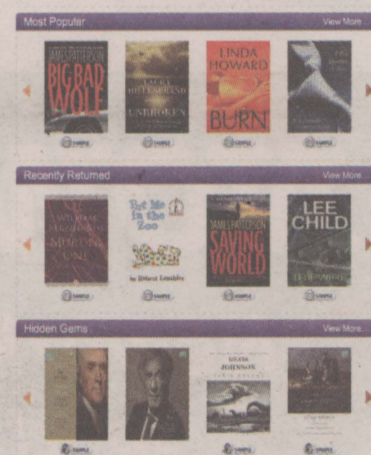
North America.

Visit <http://www.udel.edu/museums/about.html> to learn more about UD museums, hours of operation and upcoming exhibits.

Newark is also home to several local-history museums, including the Newark History Museum, housed near the train overpass on South College Avenue (call 302-368-9845 or visit <http://www.newark-dehistoricalsociety.org/> to arrange a visit); Iron Hill Museum, a one-room schoolhouse built by the du Pont family in 1923 that is currently under renovation (website: <http://www.ironhill-museum.org/>); and the Pencader Heritage Museum, which includes Revolutionary War artifacts and farm tools, at 2029 Sunset Lake Road (website: <http://www.pencaderheritage.org/main/museum/museum.html>).

CHECK OUT AN EBOOK

There will always be a special place in our hearts for paperback books, but sometimes there's not



The Delaware Libraries website lists popular eBook titles available for checkout.

enough room in the suitcase, on the bookshelf or the nightstand. And that's the beauty of eBooks.

Delaware libraries launched a collaborative eBook-lending program one year ago, and since then, more than 14,000 Delawareans

See **THE NEW YEAR**, page 9 »»

INSIDE

UD women's basketball team takes on Villanova this weekend Page 3

Local remembrance ceremony draws largest crowd yet Page 5

Celebrate the season with sushi Page 10

AIR CONDITIONING • HEATING • SERVICE & INSTALLATION

• We Service & Install All Brands

• Competitively Priced

• Emergency Service

\$79⁰⁰ A/C Tune-Up
Oil Tune-Up \$159

ENHANCED HEATING & AIR CONDITIONING

Integrity And Quality Is Our Policy

LICENSED • INSURED • BONDED

302-836-1921

Enhance your comfort this season

Local, Dependable Professional



\$25⁰⁰ OFF

Any Heating/AC Service Call
When you mention this ad.
(Excluding diagnostic fees & tune-ups)



A.E.G. Contracting L.L.C.
 Vinyl Replacement Windows
 Low E Glass & Free Capping

From only
\$235
 Installed

Will Beat any Competitors Written Quote

Lifetime Warranty

aeg4windows.com
 302 250 5438

MasterCard VISA

NJ-0000637002

Bear ONLY © Takeout Deal

16" Cheese Pizza

only **\$10**

Grotto Pizza®

836.1455 | 1200 Pulaski Highway | Bear, DE 19702

Takeout ONLY.
 Toppings are additional. Offer valid at our Bear location only.
 Cannot be combined with other discounts or offers. Limited time only.

Swirl rewards club | Join Today! | GrottoPizza.com | f t

NOW OPEN

Newark's NEWEST
 Sports Bar & Grille

We're a Family Friendly Restaurant where kids are always welcome

Where every booth has their own TV

Over 45 TV's in all plus two 90" HDTV

Featuring
 A GREAT HAPPY HOUR
 FROM 4-7 MONDAY-FRIDAY

Located at 250 S. Main Street
 Formerly Elkton Road

302-454-1592
 Visit us at thegreeneturtle.com

the Greene Turtle®

FEED YOUR PASSION

LIKE US ON FACEBOOK

SPORTS

Trial off the court

Delle Donne's toughest opponent yet will determine UD's success

By Jon Buzby
Newark Post

"High expectations" are the two words that most accurately described the outlook of the University of Delaware women's basketball team heading into the season.

With all five starters returning from last year's 31-2 team, which advanced to the second round of the NCAA Tournament, anything shy of a return to post-season play and at least a first-round win will be considered a disappointment. Especially dissatisfied will be the record 2,580 season-ticket holders, many whom have already purchased tickets to the first two rounds of this season's tournament, to be held at the Bob Carpenter Center March 24 and 26.

Despite the high expectations, it might end up being two different words that end up defining the 2012-13

campaign: Lyme disease.

The high expectations all ride on the assumption that superstar Elena Delle Donne — who is battling recurring symptoms of the disease — is healthy and available for most of games once the Hens open conference play after the holiday. Delle Donne, a two-time CAA Player of the Year and 2012 first-team All-American, has appeared in just three games.

During the Maryland game Dec. 20, there were glimpses of Delle Donne the All-American when she nailed a three-pointer at the 8:05 mark of the second half to pull the Hens within three. The crowd erupted. There was hope.

But then there were signs of a player worn down from a physical off-court battle far greater than any she's faced against a defender, or in her case, multiple defenders. Because she is admittedly not in playing shape,

Delle Donne tired faster than usual, evident when she signaled to the bench for a substitute with a little over four minutes to play and the Hens trailing by just seven points. She looked weak at times, and despite finishing with a game-high 19 points, shot an uncharacteristic 30 percent from the floor.

Against Monmouth two days later, Delle Donne's body responded strongly as she scored 30 points on 10 of 14 shooting and grabbed nine rebounds while logging 24 minutes.

"I felt really good today," remarked Delle Donne following the Monmouth win. "It was a great feeling to wake up after the Maryland game and feel refreshed and not exhausted. I think I'm getting healthier and hopefully turning the corner on feeling better."

The Hens face Villanova Saturday in the Blue Sky Classic at Dartmouth and

then play Dartmouth or Duquesne the next day. The back-to-back games will be a crucial test for Delle Donne, because Delaware (6-3) needs its star player healthy heading into Colonial Athletic Conference play starting Jan. 10. Fortunately for the Hens, 17th-year coach Tina Martin has a talented supporting cast, led by three seniors averaging over 28 minutes each.

Lauren Carra became just the 23rd player in UD women's history to score 1,000 points in the Maryland game. The only player besides Delle Donne averaging double figures, Carra is scoring 14 points per game. She's an excellent penetrator, but for the Hens to be a great team, the preseason All-CAA second-team selection has to shoot well from beyond the arc. Carra came into the season ranked 10th in UD history shooting 32 percent from 3-point range,

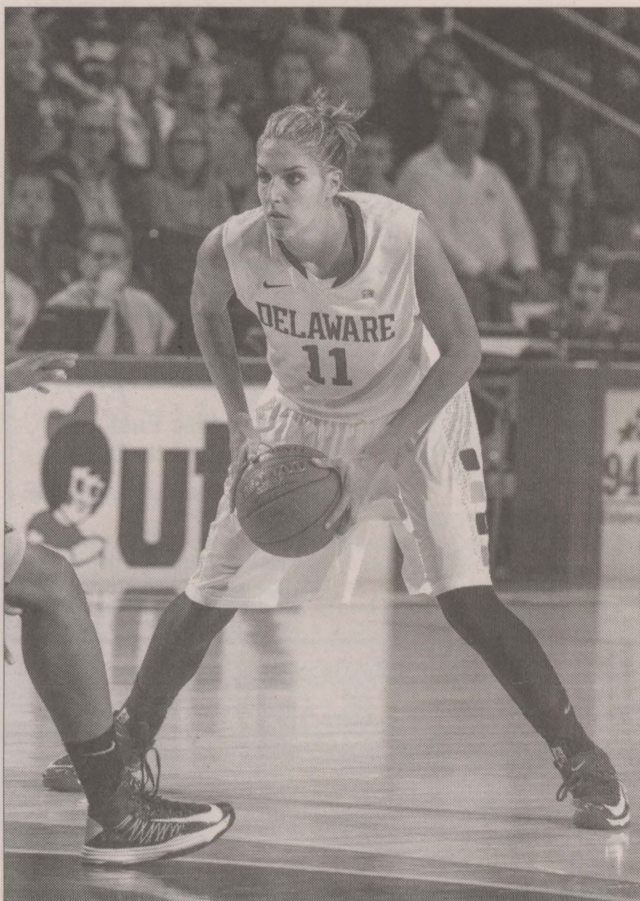


PHOTO BY MARK CAMPBELL/UD ATHLETICS

Back-to-back games this weekend will be a crucial test for Elena Delle Donne, because Delaware (6-3) needs its star player healthy heading into Colonial Athletic Conference play starting Jan. 10.

but after nine games is hitting just 26 percent.

Kayla Miller might be the most recognizable Blue Hen not named Delle Donne. The senior guard is perhaps more famous for selling souve-

See BASKETBALL, page 4 »»

The Post Stumper

ANSWERS ON PAGE 9

1	2	3	4	5		6	7	8		9	10	11
12						13				14		
15						16				17		
		18				19				20		
21	22			23				24				
25			26		27		28					
29				30			31			32	33	34
			35			36			37			
38	39	40				41		42		43		
44					45				46			
47				48				49			50	51
52				53				54				
55				56				57				

ACROSS

- 1 Eldrick Woods' alias
- 6 Cornfield cry
- 9 Egyptian boy king
- 12 Egg-shaped
- 13 Son-gun link
- 14 Inseparable
- 15 Talking bird
- 16 Chinese river
- 18 Alluring beauty (Var.)
- 20 Check
- 21 Deviate off course
- 23 Automaton, briefly
- 24 Sirens
- 25 Baseball stats
- 27 Get to
- 29 Lord Wimsey's creator
- 31 Famed WWII pin-up girl
- 35 Tourist's query
- 37 Hotel staffer
- 38 Barbecue venue
- 41 Army member?

- 43 Homer's neighbor
- 44 Rotated
- 45 Acerbic
- 47 "Wheel of Fortune" inspiration
- 49 Gathered leaves
- 52 Expert
- 53 Tramcar contents
- 54 Bring forth
- 55 Marry
- 56 Conclusion
- 57 Comedian Wanda

DOWN

- 1 Actor Cruise
- 2 Wall climber
- 3 "Coming through!"
- 4 List-ending abbr.
- 5 Detox and such
- 6 Road Runner's foe
- 7 Somewhere out there
- 8 Pale
- 9 Clan symbol
- 10 Decompress a

- computer file
- 11 Adolescents
- 17 Preacher Billy
- 19 Code name?
- 21 "Indeed"
- 22 Coach Parseghian
- 24 DVR forerunner
- 26 Betsy Ross' skill
- 28 Representative
- 30 Sigma preceder
- 32 Thailand's capital
- 33 Recline
- 34 TV announcer Hall
- 36 Poured
- 38 "Nuts!"
- 39 Quickly
- 40 Fixed a piano
- 42 Garage stack
- 45 Horse house
- 46 Almost black
- 48 Larry's pal
- 50 — out a living
- 51 Moines lead-in

NEWARK POST

Suite 109, Pomeroy Station 218 E. Main St.
Newark, DE 19711

HOURS: Mon. - Fri. 8:30 a.m. to 5 p.m.

PHONE: (302) 737-0923

FAX: (302) 737-9019

E-MAIL: postnews@chespub.com

SUBSCRIPTIONS: 1-800-220-3311

CLASSIFIED ADVERTISING

1-800-220-3311

DISPLAY ADVERTISING

(302) 737-7176

PUBLISHER / REGIONAL V.P.
DAVID FIKE

EDITOR
KATY BOWMAN

GENERAL MANAGER
RALPH BUSH

ADVERTISING MANAGER
BRIAN DOANE

LEAD DESIGNER
JASON LUCABAUGH

The Newark Post is published Friday by Chesapeake Publishing & Printing. News and local sales offices are located in Pomeroy Station, Suite 109, 218 E. Main St., Newark, DE 19711. All advertising and news are accepted and printed only at the sole discretion of the publisher. The Newark Post is a member of the Maryland-Delaware-D.C. Press Association, Suburban Newspapers of America and the National Newspaper Association.

POSTMASTER: Send address changes to: Newark Post, Suite 109, 218 E. Main Street, Newark, DE 19711. Periodicals postage paid at Newark, Del., and additional offices. (USPS #6465) Known office of publication 218 E. Main Street, Newark, DE 19711.

LOCAL NEWS

Time will tell how many sellouts this year

»» **BASKETBALL**, from page 3
nirs at Blue Rocks games than shooting the rock at the Bob. But don't let her bob-

bing ponytail and kid-friendly smile fool you; she's all business on the court. Whether she's diving for a loose ball or chest bumping

a teammate, what doesn't show up in her stat line is that she's one of the most passionate, exciting players to ever play at the Bob.

Danielle Parker leads the team in rebounding (10 per game) and steals (15). She has a nice touch inside and can hit a jump shot under pressure when called upon. Her role becomes significantly more important when Delle Donne is not on the floor.

Delaware set a women's attendance record against Maryland when 5,083 fans "mobbed the Bob" and created a sellout atmosphere similar to the Mike Brey era. Time will tell how many more sellouts there will be this season and whether or not one of them comes in late March when UD hosts the first and second rounds of the NCAA Tournament.

For that tournament sell-

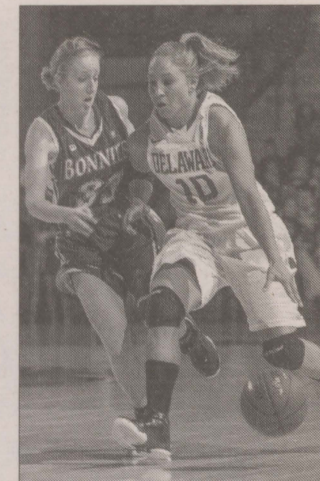


PHOTO BY MARK CAMPBELL/UD ATHLETICS
Ursuline Academy graduate Kayla Miller is another fan favorite on the UD women's basketball team.

out to happen, Delaware will have to be playing in it. And whether or not that happens comes down to two words: Elena Delle Donne.

Contact Jon Buzby at JonBuzby@hotmail.com and follow him @JonBuzby on Twitter.

BREAKFAST Specials

Available Monday thru Friday until 11:00 A.M. Only!
(Regular Breakfast Menu available after 11:00)

302-366-1241

2 Hotcakes
2 Eggs (any style)
2 Bacon Strips
2 Sausage Links &
Coffee, Tea or Small Soda
(No Substitutions)

\$5.75

Guilday's

Just 1 Mile East
Rt. 40, just over MD/DE Line
2725 Pulask Highway, Glasgow, DE
Hours
Monday - Saturday 5:30 am - 3pm
Sunday 7:00 am - 2:00 pm

www.guildays.com

got scrap?
CASH PAID FOR SCRAP!

Cash for all types of metals & cars including:
Steel • Batteries • Aluminum • Stainless • Brass • Copper
Roll Off & Demolition Services Available

Clean Yard - Friendly Service
Minutes from Newark

410-392-2980

53 Dogwood Rd., Elkton, MD
(Corner of Blueball & Dogwood Road)
www.elktonrecycling.com

ELKTON RECYCLING

AIRLINE CAREERS BEGIN HERE

Become an Aviation Maintenance Tech.
FAA approved training.
Financial aid if qualified - Housing available.
Job placement assistance.
CALL Aviation Institute of Maintenance
800-481-8974

NEED A LAWYER?

Offering affordable legal services at
1400 Peoples Plaza, Suite 121

EXPERIENCE COUNTS
Over 30 years in practice

- Auto Accidents
- Divorce & Custody
- PFA

- Work Injuries
- Bankruptcy
- Criminal Law/DUI

Our firm's goal is to provide affordable legal services to our clients. We utilize a team approach combining the efforts of experienced paralegals and attorneys, coupled with aggressive, affordable representation, maximizing your recovery, protecting your rights, to provide the most effective personal legal services available.

Rahaim & Saints
ATTORNEYS AT LAW

1400 Peoples Plaza
Suite 121
Newark, Delaware

302-832-1800
www.rahaimandsaints.com

2055 Limestone Road
Suite 211
302-892-9200

SHOWPLACE
Bath & Kitchen
Your Remodeling Company

Proudly displaying

Call for appt.
410-398-3663
123 North Bridge St.
Elkton, MD

Dr. Yvonne Kneisley
OPTOMETRIST

- Clear Explanations of Procedures
- Professional & Caring Staff
- Most Insurances & HMO's Accepted
- Eye Examinations
- Contact Lenses
- Fashion Eyewear
- Treatment of Ocular Diseases
- Outside prescriptions welcome

KNEISLEY EYE CARE
(302) 224-3000
The Main Street Galleria
45 East Main Street, Suite 201 • Newark
We validate parking
www.kneisleyeyecare.optometry.com

WILMINGTON & WESTERN RAILROAD
Delaware's Scenic Railroad

SANTA CLAUS EXPRESS
Nov., 24th & 25th
Dec., 1, 2, 8, 9, 15, 16, 22 & 23rd
12:30 & 2:30 PM
*reservations required

Discount code for online reservations for children riding in costume: Witch50

HUNTER'S DEN DINNER TRAIN
Dec. 4th & Dec. 11th 7:00 PM
*reservations required

HOLIDAY LIGHTS EXPRESS
DEC. 14th - 23RD
DEC. 26TH - 30TH
5pm, 6pm, 7pm, 8pm & **9pm
**Only on Friday and Saturdays

Reservations can be made online at: www.wwr.com or by calling 302-998-1930

Greenbank Station is on Newport-Gap Pike, Rt. 41N in Delaware 1/4 mile from intersection Kirkwood Hwy. Rt. 2

Don't Let Anything Cloud Your Vision

- Cataract and LASIK surgery
- Diabetic and Ocular Disease Management
- Glaucoma and Retina Evaluation and Treatment
- Eyeglasses and Contact Lenses

5 convenient locations to serve you!

DOVER	MILFORD	SMYRNA	NEWARK	BEAR
833 S. Governors Ave.	110 N.E. Front St.	10 S. Market St.	333 E. Main St.	1721 Pulaski Hwy.
674-1121	422-5155	653-9200	368-9105	836-5410

Accepting Most Insurances

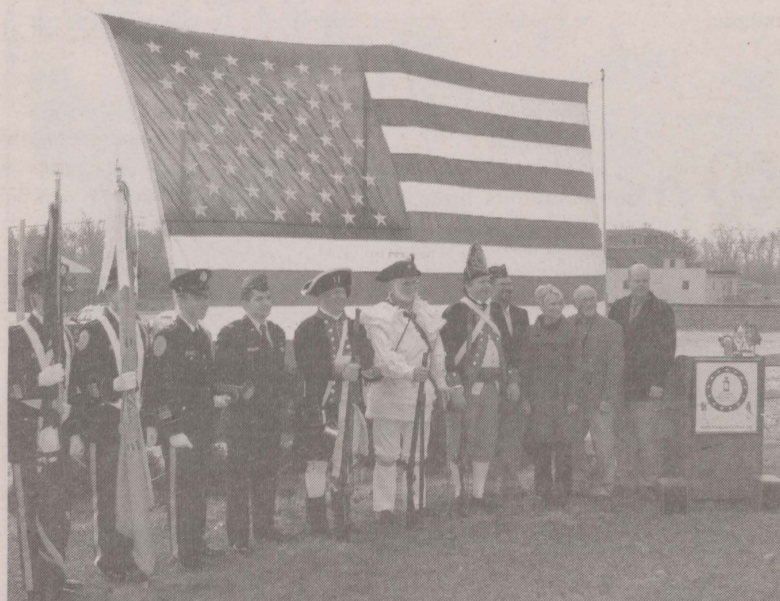
DELAWARE EYE CARE CENTER
Complete Eye Care
Schedule your appointment today!
800-900-2020
www.delawareeyecare.com

Gary I. Markowitz, M.D.
Board Certified Ophthalmologist

LOCAL NEWS

WREATHS of REMEMBRANCE

The Wreaths Across America event, held in Newark earlier this month to honor the 20 Americans who died at Cooch's Bridge guarding against British and Hessian soldiers, drew its largest crowd in three years, said Pencader Area Heritage Association members who organized the event.



Several local dignitaries attended the event, including (from left) members of the Post 25 American Legion Honor Guard, members of the First Delaware Regiment, Major Kevin Conley, state Sen. Bethany Hall Long, Bill Conley and New Castle County councilman David Tackett.



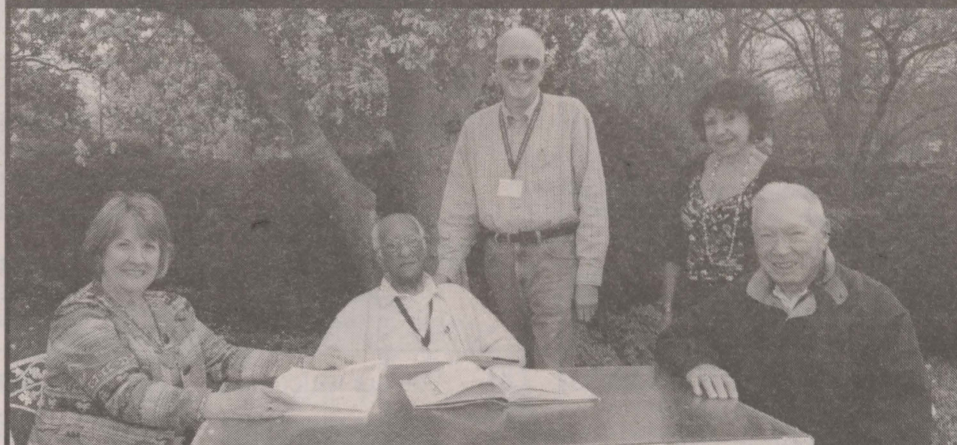
Members of the First Delaware Regiment fire a volley of salute to the 20 Colonial soldiers who perished in the Battle of Cooch's Bridge on Sept. 3, 1777.

Major Kevin Conley of Middletown, a Delaware Guard Army Engineer officer attached to the 86th Mountain Division in Afghanistan, who is now a member of the Army's "Wounded Warrior" program, speaks to the crowd.

PHOTOS BY FRANK ROMANELLI



Adults 50 and over
Looking for more excitement?
Join now!



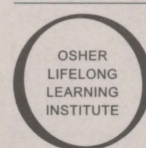
**Join the Osher Lifelong Learning Institute
at the University of Delaware in Wilmington**

*Enjoy learning with no exams or grades • More than 240 courses and activities
Affordable, with convenient parking*

**Gift certificates
available**

**OPEN HOUSE—
Thursday, January 3, 10 a.m.–1 p.m., Arsht Hall
CLASSES START FEBRUARY 4**

To learn more, contact us at 302-573-4417, LLL-wilm@udel.edu
or visit www.lifelonglearning.udel.edu/wilm to view our course catalog.



Osher Lifelong Learning Institute
at the University of Delaware in Wilmington
Arsht Hall, 2700 Pennsylvania Avenue
Wilmington, Delaware 19806-1169



NP122712

ODYSSEY CHARTER SCHOOL

NURTURING A LIFELONG LOVE OF LEARNING

Odyssey Charter School, with its tradition of strong academics and innovative language program, is now offering a 6th grade for the 2013-2014 school year!

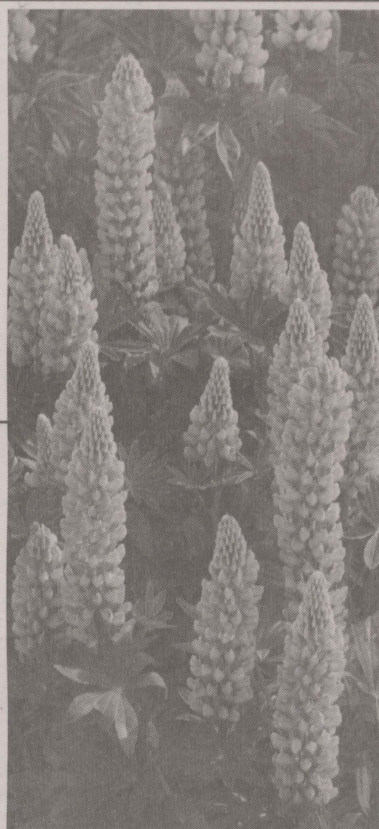
**ACCEPTING APPLICATIONS
THROUGH JANUARY 9, 2013**



- FLES Program - Greek Foreign Language Program -
- Tuition-free, quality charter school -
- Five time "Superior" rated school -
- Future Plans for a new k-12 school on 16 acres in Hockessin, DE -

VISIT OUR WEBSITE FOR MORE INFORMATION:
www.odysseycharterschooldel.org | 302.994.6490

Church Directory



The Episcopal Church
Welcomes You

St. Thomas's Parish

276 S. College Ave. at Park Place,
Newark, DE 19711
Across from UD Health Center
(302) 368-4644
Church Office: 9:00-1:00 Mon-Fri
www.stthomasparish.org

Sunday Worship

8:00 am, 10:30 am & 5:30 pm
Child Care & Children's Education 9:30 am
Weekday Worship Services - Mon.-Fri.: Evening
Prayer @ 5:15 pm
Wednesday: Holy Eucharist 12:10 pm
(Healing Service on 2nd & 4th Wed.)
The Rev. Paul Gennett, Jr. - Rector
The Rev. Deacon Cecily Sawyer Harmon -
Episcopal Campus Chaplain
Marc F. Cheban - Organist & Choirmaster

God meets you where you are!
And So do we. Come and see...

**To Advertise or make changes call
Nancy Tokar 1-800-220-1230 or
Direct at 443-245-5072**

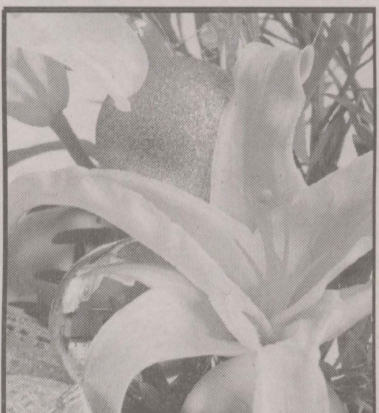
Prices start as low as \$14 and includes
internet. Deadline is Thurs. at 4:30 pm
for following Friday edition

GLASGOW BAPTIST CHURCH



3021 OLD COUNTY RD.,
NEWARK, DE

SUNDAY SCHOOL 10:00AM
MORNING WORSHIP 11:00AM
EVENING SERVICE 6:00PM
MID-WEEK SERVICE THURS., 7:00PM
All Welcome
Dr. W. Grant Nelson Pastor
410-398-2733



First Church
of Christ,
Scientist

48 West Park Place, Newark

Sunday Service & Sunday School 10:00am
Wednesday Testimony Meetings 7:30pm
Childcare available during services.

302-456-5808
ALL ARE WELCOME
www.fccsnewark.org



Promote your upcoming
services and activities in
our Church Directories

NEW LIFE CHRISTIAN FELLOWSHIP

Sunday Service 9:30 AM
Multimedia Children's Ministry!
Contemporary Worship!
Relevant messages!
Church Office: 999-1800
Check out our web page:
www.NewLifeDE.org
2712 Old Milltown Rd.
Wilmington, DE
(near Kirkwood Hwy. & Milltown Rd.)



You are welcome at
Ebenezer

United Methodist Church

website: www.ebenzerumcnewark.org
email: eumc1824@aol.com

SUN SERVICES 8:30 & 11:00am
SUNDAY SCHOOL 9:45am
Contemporary Worship
Every 3rd Saturday of the month 5:30 pm
525 Polly Drummond Road
Newark 302-731-9494
Handicapped Accessible • Child Care
TED DAY, PASTOR



St. Barnabas'
Episcopal Church

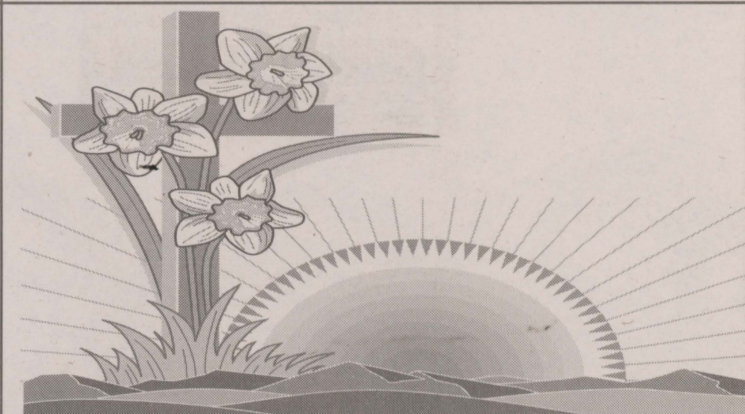
Rev. John B. Pumphrey, Priest-in Residence

Worship Services:

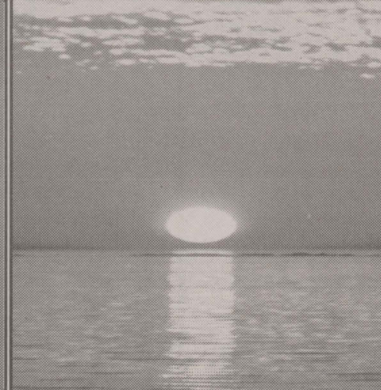
Saturday 5:30 pm
Sunday 7:30, 10:00 am
Sunday School 9:45 am

Child Care (0-3) available during 10AM service

302-994-6607
www.stbarnabasde.org
2800 Duncan Road
Wilmington, DE 19808



He Is Risen!



FIRST BAPTIST CHURCH
607 Delaware Avenue
Elkton, Maryland 21921
410-398-2915

Pastor Jim McBride

Church website www.fbcclkton.org
Daily Preschool 410-398-4505 Weekday Preschool has openings available

SERVICES

Small Groups for all ages 9:15 a.m.
Morning Worship 10:30 a.m.

Wednesday Evening
Adult Small Groups
Children's Activities -
Preschool thru 6th grade 7:00 p.m.

To Advertise Your Church's Activities Call Nancy at 1-800-220-1230 or 443-245-5072.

OUT OF THE ATTIC

Synchronized skating at UD

This week's Out of the Attic item is a March 25, 2006 W. T. McLain photograph of an adult synchronized skating team from the University of Delaware Figure Skating Club competing at the U. S. Figure Skating Association National Championships at the Van Andel Arena in Grand Rapids, Mich.

Some of these skaters started to learn to ice skate as children in the mid-1980s at the UD ice arena. The local figure-skating club started a program of what then was called precision skating. Several children's teams entered the 1989 Eastern Sectional Championships held in Stone Mountain, Ga. The next year they qualified for their first National Championships held in Anchorage, Alaska.

Through the years, the skaters moved upward onto age- and skill-grouped teams. Each year they entered the Eastern Championships and often moved on to



Nationals, thereby traveling up and down the East Coast and to sites in many areas of the country.

As an example, one skater who started lessons at age 7 and is still skating in her 30s has been to Nationals in Anchorage; Lake Placid, N.Y.; Detroit; Chicago; Colorado Springs; San Diego; Tampa; Grand Rapids; Providence, R.I., and Atlanta.

She has been to many other places for Sectional Championships and Invitational Competitions.

Learn more about Newark history: The Newark History Museum will be open only by appointment through the winter months. Individuals, families, groups, and organizations may call 302-368-9845 to arrange a visit. Check out the Historical Society's web-site at www.NewarkDeHistoricalSociety.org or contact the Society by e-mail at newarkdehistoricalsociety@yahoo.com, by message phone at 302-224-2408, or by postal mail to P. O. Box 711, Newark, DE 19715-0711.

ATTEND COLLEGE ONLINE FROM HOME

*Medical, *Business, *Criminal Justice, *Hospitality.
Job placement assistance. Computer available.
Financial Aid if qualified. SCHEV authorized.

Call 877-206-4290
www.CenturaOnline.com

Centura
COLLEGE

Kidney Dialysis Safety Warning



Reports of heart attack and death led the FDA to recall Granuflo Concentrate and Naturalyte Liquid, which are commonly used drugs during dialysis.

These products have been shown to increase levels of sodium bicarbonate in the blood which can lead to:

Heart Attack Stroke Death

If you or a loved one experienced any of the serious side effects above or died within 72 hours of kidney dialysis, call 1-800-598-5940.

Janet, Jenner & Suggs, LLC

1-800-598-5940

Attorneys admitted in multiple states. Practicing nationally on a pro hac vice basis. Principal offices in Baltimore, MD, Columbia, SC & Asheville, NC

T-Mobile

QUALIFY AND GET T-MOBILE®
SERVICE WITH A DISCOUNT OF
AT LEAST \$10 A MONTH

T-Mobile keeps you connected affordably.

Basic plan includes:

- 145 Whenever Minutes®
- 500 Night Minutes +
- 500 Weekend Minutes
- Nationwide 4G Network
- Additional minutes for \$.05 each
- \$19.99/mo. before Lifeline discount

Are you eligible?

You may qualify based on your income or if you're currently eligible to receive public assistance such as Medicaid, Food Stamps (SNAP) or Supplemental Security Income (SSI). Your eligibility varies by state. If you're a resident of federally recognized Tribal Lands, you may qualify for additional discounts.

See if you qualify and learn how to apply
by visiting www.T-Mobile.com/lifeline
or call 1-800-937-8997.

Discounted wireless service is provided under the Lifeline assistance program. Lifeline is a government assistance program that provides only eligible consumers with discounted service that is nontransferable and is available for only one line per household. A household is defined, for purposes of the Lifeline program, as any individual or group of individuals living at the same address that share income and expenses. T-Mobile offers Lifeline service only in areas where the company has Eligible Telecommunications Carrier status. You may find more information about Lifeline and other wireless services available from T-Mobile USA, Inc. at www.T-Mobile.com.

Limited time offer; subject to change. Taxes and fees additional; other fees may apply. Domestic only. **Coverage:** Coverage not available everywhere. **Nights and Weekends:** Weekends are midnight Friday to midnight Sunday, and nights are 9:00 p.m. to 6:59 a.m. Monday-Friday, based upon start time of call. Time of call usually based on location of equipment transmitting call; if location is not available, time of call based on time zone associated with your phone number. **Network Management:** Data traffic of Premium and Ultra plans will be prioritized over other currently offered plans during periods of congestion. Service may be slowed, suspended, terminated or restricted for misuse, abnormal use, interference with our network or ability to provide quality service to other users, or significant roaming. See brochures and **Terms and Conditions (including arbitration provision)** at www.T-Mobile.com for additional information regarding T-Mobile service and products, including important limitations on availability and reliability of 9-1-1 emergency service when using Wi-Fi Calling. © 2012 T-Mobile USA, Inc.

Main Street Dental

Thomas D. Cox, DDS • Erin E. Cox, DDS



302.368.2558
(Fax) 302.366.0911

Check out our New Website
www.mainstreetdentalnewark.com

PREMIER
AUTO & TIRE
KEEPING AMERICA ROLLING!

★★★★★★★★
VIP

PROGRAM

NOW: \$189

Reg. \$579

USE ALL YEAR LONG!

Includes:

4 Oil Changes, Wheel Alignment,
Induction Service, Tire Rotation
Rates & Balance

Only Available until December 31st

Visit www.autoservicenewarkde.com for coupon

233 E. Main Street, Newark

302-737-7998

*Celebrating Over 50 Years of Educating
and Inspiring Newark's Children!!!*

Nurturing, Professionally Trained Teachers
Child-Centered Developmentally Appropriate
Curriculum
Nutritious Breakfast/Lunch/Snack Provided
Modern Secure Facility
4 Playgrounds/Woods On 5 Acres



Non-Profit Learning Center Featuring:

Full Day Early Childhood Education 6 Wks. - 5 Yrs.
Before/After School Care & Summer Camp to Age 14

*Where Children Come
First - Every Day!!!*

**NAEYC Nationally Accredited
& DE Stars Level 5**

Scholarship Assistance/POC Welcome

Open 6:45 am - 6:00 pm

Summer Camp enrollment starts early February

See Summer Camp Link on our website
for camps and weekly information.

**921 Barksdale Rd., Newark
302-731-4925
www.newarkdaynursery.org**



**DON'T WAIT
DONATE**

18 convenient
Goodwill locations!

This is the perfect time to
clean out your closets and
improve people's lives.

Goodwill
Delaware & Delaware County

For locations and hours visit
www.goodwillde.org/Donate.

PARKING IN REAR

LIQUOR BEER WINE

FOR SPECIALS!

Hours: Monday-Saturday 9am-1am • Sunday 12pm-8pm
136 S. Main St., (formally Elkton Rd), Newark, DE 19711
302-533-6664

**Entrance
in the rear**

**Find us on
facebook**

LOCAL NEWS

Electronic library books have many added benefits

»» THE NEW YEAR, from page 1

have downloaded more than 120,000 eBooks and eAudiobooks, according to a recent report.

Patrons for all of Delaware's libraries can simply visit <http://www.lib.de.us/>, click on the "eBooks & eAu-

diobooks" tab at the top of the page, and follow the instructions to download eBooks to read on their Kindles, Nooks and other e-readers; laptops and personal computers, and can play audiobooks on computers, iPods and most MP3 players.

The libraries' eBook collection has

grown to more than 7,000 items, and the titles include the popular Jack Reacher series by Lee Child, Willie Nelson's new autobiography "Roll Me Up and Smoke Me When I Die," and Emeril Lagasse's new cookbook "Kicked-Up Sandwiches."

EBooks are great to tote along while

traveling or even just when you're waiting in a long line; and audiobooks can be a godsend for long commutes. And there is one extra advantage electronic books will always have over paperbacks: on an e-reader, no one will know you're deep into "Fifty Shades of Grey."

Post Stumper solved

Solution time: 27 mins.

T	I	G	E	R		C	A	W		T	U	T
O	V	A	T	E		O	F	A		O	N	E
M	Y	N	A	H		Y	A	N	G	T	Z	E
						G	L	A	M	O	R	
Y	A	W		B	O	T		V	A	M	P	S
E	R	A	S		R	E	A	C	H			
S	A	Y	E	R	S		G	R	A	B	L	E
						W	H	E	R	E		
P	A	T	I	O		A	N	T			N	E
S	P	U	N			B	I	T	I	N	G	
H	A	N	G			M	A	N		R	A	K
A	C	E				O	R	E		E	V	O
W	E	D				E	N	D		S	Y	K

THANKS FOR A GREAT YEAR... HAVE A SAFE AND HAPPY NEW YEAR!

STATE LINE LIQUORS

Low Prices! Great Selection! Best Service!

Elkton-Newark Rd., Elkton, MD

1 (800) 446-WINE

1 (410) 398-3838

More coupons online at

www.statelineliquors.com

Coupons Good For Advertised Limits Only



Find us on Facebook

Svedka Vodka \$15.99 1.75L No Limit • Expires 1/1/13	Seagram's VO Canadian \$16.99 1.75L No Limit • Expires 1/1/13	Duggan's Dew Scotch \$18.99 1.75L No Limit • Expires 1/1/13
Dewar's Scotch \$28.99 1.75L No Limit • Expires 1/1/13	Malibu Flavored Rums \$16.99 1.75L No Limit • Expires 1/1/13	Stolichnaya Vodka \$26.99 1.75L No Limit • Expires 1/1/13
New Amsterdam Gin \$14.99 1.75L No Limit • Expires 1/1/13	Gilbey's Gin \$9.99 1.75L No Limit • Expires 1/1/13	Maker's Mark Bourbon \$22.99 750mL No Limit • Expires 1/1/13
Bailey's Irish Cream \$15.99 750mL No Limit • Expires 1/1/13	Ferrari Brut Trentino Sparkling Wine \$19.99 750mL No Limit • Expires 1/1/13	Nicolas Feuillatte Brut Champagne \$19.99 750mL No Limit • Expires 1/1/13
Cavit Pinot Grigio \$9.99 1.5L No Limit • Expires 1/1/13	La Vieille Ferme French Wines \$9.99 1.5L No Limit • Expires 1/1/13	Lindeman's Bin Series Australian Wines \$7.99 1.5L No Limit • Expires 1/1/13
Dry Creek Vineyard Chenin Blanc \$6.99 750mL No Limit • Expires 1/1/13	Chateau St. Michele Riesling \$5.99 750mL No Limit • Expires 1/1/13	Mark West Pinot Noir \$7.49 750mL No Limit • Expires 1/1/13
Benziger Cabernet Sauvignon \$13.49 750mL Limit 12 bottles • Expires 1/1/13	Clos Du Bois Chardonnay \$7.99 750mL Limit 12 bottles • Expires 1/1/13	Stella Artois \$20.99 cs 2/12 pack bottles Limit 5 cases • Expires 1/1/13
Natural Light & Ice \$11.99 cs 30 pack cans Limit 5 cases • Expires 1/1/13	Coors Light & Original \$17.99 cs 36 pack cans Limit 5 cases • Expires 1/1/13	Bud All Types \$14.99 cs 30 pack cans Limit 5 cases • Expires 1/1/13
Corona Regular & Light \$21.99 cs 24 pack bottles Limit 5 cases • Expires 1/1/13	Sam Adams Lager & Winter Lager \$24.99 cs 2/12 pack bottles Limit 5 cases • Expires 1/1/13	Dogfish Head 60minute IPA \$29.99 cs 4/6 pack bottles Limit 5 cases • Expires 1/1/13
Yuengling Lager & Light Lager \$14.99 cs 24 pack bottles Limit 5 cases • Expires 1/1/13	Michelob Ultra \$14.99 cs 24 pack bottles Limit 5 cases • Expires 1/1/13	Miller Lite \$17.99 cs 36 pack cans Limit 5 cases • Expires 1/1/13

More coupons online @

www.statelineliquors.com/coupon_clippers.htm

YANKEE CHEF

Celebrate the season with sushi

Here's an idea for the upcoming New Year's Eve parties that are bound to bring out festive appetizers. I thought of this while watching my favorite chef, Masaharu Morimoto, swirling up one of his creations on television. He inspired

me to give you a sushi party for the New Year.

It is a heck of a lot easier on the host, and the guests will love it. There is an abundance of ways to prepare sushi rolls — even an American version called California

rolls — but I believe that having partygoers make their own sushi cones will not only get more people to try it, but have fun as well, especially knowing they can add whatever ingredients they desire. First, have some low-lying tables scattered throughout a room if you have the space. Scatter some throw pillows in front of each.

Otherwise, here is a beginning list of items you should spread out on a serving table for your friends and family to help themselves.

YANKED SUSHI CONES

Have some warmed sushi rice available for all to fill their cones. Have a couple bowls of wasabi

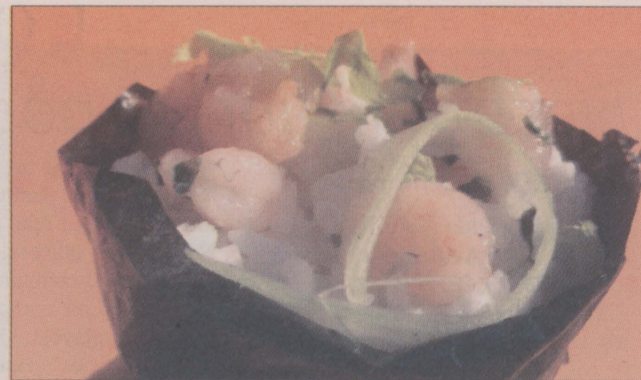
handy. This is a hot, flavorful and green condiment that is a must for sushi. If all you can find is wasabi powder, simply mix it with water in the ratio of 1 part warm water with 2 parts powder. It should be thick, not runny. And soy sauce. Need I say more?

Pickled ginger can be found in most supermarkets. Have them ready at room temperature.

A couple small bowls of sesame seeds adds flavor, color and texture to these Sushi cones.

Thinly sliced cucumbers, with or without skin.

Your choice of seafood, such as crabmeat, lobster, cooked shrimp, cooked baby scallops or smoked



salmon, thinly sliced.

Peeled, pitted and thinly sliced avocado.

Splurge on some caviar, its not as expensive as you might think.

Cooked whole kernel corn

A couple stacks of nori, the black seaweed sheets, for people to grab and roll into a cone and fill.

Have some shredded beef or pork if desired. Set out a small

bowl of warmed chili sauce as well.

Spring onions, or green onions, roughly chopped is a great addition.

Put some chopsticks next to some of these bowls and watch who can use them to pack the rice into their cones.

Squares of tofu for the adventurous.

And above all, have some sake for everyone to enjoy. Heat the sake in a very clean saucepan before pouring into a teapot for your guests. Don't forget the sake cups or small teacups and napkins. If you would like, substitute the sake for Japanese beer.

SUSHI RICE

5 cups short-grain rice
6 cups water
1/2 cup rice vinegar
2 tbsps. sugar
1 tsp. salt

Rinse the rice in cold water while stirring briskly to remove any dirt. Drain the rice completely. Place the rice and the six cups of water in a medium-sized saucepan and cover it with a tight-fitting lid. Bring the water to a boil over medium heat. Allow the water to boil for three minutes, and then reduce the heat to low and continue cooking 15 minutes without removing the lid. Remove the rice from the heat and remove the lid (the water should no longer be visible).

Turn the rice out evenly on a well-greased cookie sheet or a large bowl using a spatula. Sprinkle the rice with the vinegar, sugar, and salt while mixing with a spatula or rice paddle until the rice reaches body temperature. Keep the rice covered with damp paper towels or napkin until the rice is ready to put into bowls. I recommend waiting until the last minute before making and bringing it out to the tables.

Give the gift with color this year.
Hollywood Gift Cards are the Perfect Gift
for the Perfect Tan.



HOLLYWOOD TANS

\$1

Mystic Spray

Buy 2 Mystic Spray

Get the Second

Mystic Spray For \$1

(Cannot Be Shared)

OR

\$1

One Week Of

Unlimited Tanning

(Buy 1-Week of Unlimited

Tanning Get the Second

Week For \$1)

OR

\$1

One Month

Unlimited Pkg.

(Purchase Of A 3-Month

Unlimited Package Get The

4th Month For \$1)

\$1

OR

Tanning

Package

(Buy 10 Tans

Get 3 More Tans for \$1)

ELKTON • 1197 E. PULASKI HWY • 410-398-7804
BEAR • 1128 PULASKI HWY • 302-834-8744
WWW.HTTANNING.COM



In the coming year
Give enough time to:

Reassure a child....

Answer a probing question....

Forgive imperfection....

Sympathize with hurt....

Help restore order....

And remember

that history is ourselves....

Minster's

of Newark

Jewelers since 1895

Newark Shopping Center,
Newark, DE 302-737-5947
info@minstersjewelers.com

You're Invited To Experience... The Best Dentistry Has To Offer!

MAY YOUR smile BE

merry AND bright

ONLY \$89

Exam, X-Ray
& Cleaning
New Patient Only

Delmarva Center For Dental Excellence
230 S. Bridge St. • Elkton • 302-737-4600
With this coupon, Not valid with any
other offer.
Offer Expires 1/15/2013

ONLY \$199

In-House Teeth
Whitening
New Patient Only

Delmarva Center For Dental Excellence
230 S. Bridge St. • Elkton • 302-737-4600
With this coupon, Not valid with any
other offer.
Offer Expires 1/15/2013

\$99
PER MONTH

*OAC
1 Complete Implant
Or 4 Lumineers

Delmarva Center For Dental Excellence
230 S. Bridge St. • Elkton • 302-737-4600
With this coupon, Not valid with any
other offer.
Offer Expires 1/15/2013

ONLY \$499

1 Crown
New Patient Only

Delmarva Center For Dental Excellence
230 S. Bridge St. • Elkton • 302-737-4600
With this coupon, Not valid with any
other offer.
Offer Expires 1/15/2013

Holiday Gift Certificates Available

CareCredit
Patient Payment Plans



The Pavillion 230 South Bridge St., Elkton
410-398-7711 • 301-737-4600
www.delmarvadentalexcellence.com



ABOUT THE

AUTHOR: Jim Bailey,
a.k.a. The Yankee Chef, is
the Newark Post's new food
columnist. He is a New
England food historian, food
columnist, and author of
the cookbook "The Yankee
Chef," published this year.

CHESAPEAKE Classified

It's a Shore Thing...



To place an ad online please visit
www.chesapeakeclassified.com

**410-398-1230 or
800-220-1230**

or fax us 24 hours - 7 days a week

410-398-8192

601 Bridge Street, Elkton, MD 21921
Monday - Friday 8 a.m. to 5 p.m.

Checks, Cash or Credit Card



ANNOUNCEMENT

Notices

**ATTEND COLLEGE
ONLINE from Home.**
*Medical, *Business,
*Criminal Justice,
*Hospitality. Job place-
ment assistance.
Computer available.
Financial Aid if quali-
fied. SCHEV author-
ized. Call 877-206-
4290 www.CenturaOn-
line.com

I am a volunteer to
feed homeless cats in
the Newark & sur-
rounding area. I have
food to feed them
through the winter. I
just need to know
where they are located.
Please call me and I
can help 302-235-5667

Lost & Found

LOST 3 yr old female
Chesapeake Bay
(brown) last seen on
RT 272 and Tailwinds
lane. 302-530-2668
sorley missed!!!

**CHESAPEAKE
CLASSIFIED
HAS IT ALL**
410-398-1230
800-220-1230
**WWW.CHEESAPEAKE
CLASSIFIED.COM**

Lost & Found

**LOST BLACK &
WHITE CAT** off Old
Paper Mill Rd in
Newark, Call 302-525-
6288 if found. Thanks

LOST CAT, Black &
White answers to
name Pixie, proceed
with caution, needs
medical attn, lost in
vicinity of Royal Farms
on Rt. 213 Sat. 12/15,
microchipped
410-398-0171

LOST DOG—HUGE REWARD!

Male Dachshund;
reddish-brown,
short hair (smooth)
Skittish; Please do
not chase.
Call when sighted
302-437-5112



EMPLOYMENT

Help Wanted Full Time

**AIRLINE CAREERS
BEGIN HERE** -
Become an Aviation
Maintenance Tech.
FAA approved training.
Financial aid if quali-
fied. Housing avail-
able. Job placement
assistance. CALL Avi-
ation Institute of Main-
tenance 800-481-
8974.

Help Wanted Full Time

**AIRLINE MECHAN-
IC** - Train for high pay-
ing Aviation Mainte-
nance Career. FAA
approved program.
Financial aid if quali-
fied - Job placement
assistance. CALL Avi-
ation Institute of Mainte-
nance
(866) 823-6729.

CNA PROGRAM Day
class, 6 wks; Weekend
class, 10wks. Call 302-
983-6495

CRST offers the Best
Lease Purchase Pro-
gram! SIGN ON
BONUS. No Down
Payment or Credit
Check. Great Pay.
Class-A CDL required.
Owner Operators Wel-
come! Call:
866-590-5014

Drivers - HIRING
EXPERIENCE/INEX-
PERIENCED TANKER
DRIVERS! Earn Up to
\$.51 per Mile! New
Fleet Volvo Tractors! 1
Year OTR Exp. Req. -
Tanker Training Avail-
able. Call Today: 877-
882-6537 www.Oak-
leyTransport.com

**Drivers: CDL-A NO
GIMMICKS!**
Just great pay, Miles,
hometime & benefits
50¢/mile for Hazmat
Teams Solos start at
36¢/mile 1yr. exp. req'd
800-942-2104 Ext.
7308 or 7307
www.TotalIMS.com

**TAG YOUR AUTO
FOR SALE IN OUR
CLASSIFIEDS**

Help Wanted Full Time

**WANTED: LIFE
AGENTS**; Earn \$500 a
Day; Great Agent Ben-
efits; Commissions
Paid Daily;
Liberal/Underwriting;
Leads, Leads, Leads
LIFE INSURANCE,
LICENSE REQUIRED.
Call 1-888-713-6020

**Wellness Company
Expanding**
Up to \$25-\$75 Hr.
Training Provided
(800)264-8073
www.WorkatHomeTy-
coon.com

Help Wanted Part Time

Personal Assistant
2-3 days wk. Must
have DL. Drive to med-
ical appts, grocer. Light
cleaning. Call 301-697-
1809



RENTALS

Apartments Unfurnished

All at one he felt joy.
"HUGE SAVINGS" for
Every Girl & Boy.
Pay **no rent** until
February, 2013
Call for Details!

Pine Hill Apartments
410-398-9496
www.liveatpinehill.com

Apartments Unfurnished

NORTH EAST 1BR
\$650 mo. + utils. & sec.
No pets, non smok.
environ. 410-392-0322
or 410-392-2822

NORTH EAST water-
front N.E River. 2BR,
W/D, \$850/mo
(inc. Direct TV).
443-553-6032 lvmes

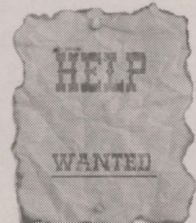
Houses for Rent

CECILTON- 2br, 1.5
ba, cac, w/d, \$975/mo
+ sec. & util's. pets
neg. 410-275-6000

RISING SUN, 3br,
1ba, bi-level. CAC &
cen. heat. Country set-
ting. \$1250/mo. + sec.
Call 443-553-5747.

Townhouse for Rent

PERRYVILLE, MD
3 bedroom, 1 1/2
baths, \$1025.00mo-
security deposit
phone 410-287-2192



**CHECK OUT
CHESAPEAKE
CLASSIFIEDS
EVERYDAY FOR
THAT NEW
JOB!**

Townhouse for Rent

RISING SUN Walnut
Manor 3 br, 2.5 bath,
town house walk out
basement, \$1300/mo.
Call Debbie
410-658-9558

Commercial Rentals

CECIL CO - Office;
Retail; Warehouse;
Industrial. Outside stor-
age 443-553-1517

FAIRHILL VILLAGE
950 sq ft store/office
loc Rt 213 & Rt 273
410-398-5724

**Office spaces / store
front.** Free standing
bldg. North East Rd.
443-350-0621



REAL ESTATE

Waterfront for Sale

Waterfront Lots
Captains Cove Virginia
on Chincoteague Bay
Marina, Clubhouse,
Golf, Tennis, Pools;
New Home/Lot Pack-
age from \$127K
Lots from \$14,500;
www.gatewaytothe-
cove.com
(443) 614-8793



SERVICES

Home Improvement Services



**K. Spencer
Home
Improvements,
Inc.**

*When Quality
Comes First!*

- Garages
- Basements
- Kitchens & Baths
- Additions
- Crown Molding
- Windows
- Top Notch
Electric

MD lic # 12158

**FREE
ESTIMATES**
**REFERENCES
LICENSED &
INSURED**

No Job to small
MHIC#127618

410-378-9219

**RID YOUR HOME OF
ALL THAT CLUTTER!
HAVE A YARD SALE
AND ADVERTISE IT
WITH US!**

Moving & Hauling

**WE PAY CASH
FOR JUNK CARS**
from \$250 - \$3000,
Cash free towing,
302-240-5096



MERCHANDISE

Animals/Pets



**CHIHUAHUA
PUPPIES**, 2 male,
shots & wormed, vet
checked, \$290 each.
Adult male 4yrs old,
good breeder \$150
410-275-2723



**Call Us Today
To Place Your Ad.**
**Let Chesapeake
Classified Work
For You!**

**410-398-1230
800-220-1230 or
www.chesapeake
classified.com**

Animals/Pets

FREE TO GOOD HOME: Senior Cats, spayed, neutered & shots. Local rescue, 443-945-6282.

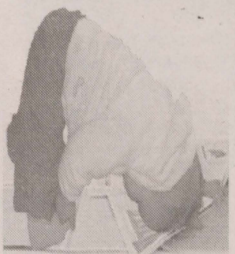
PUGGLE, 8mo old, House broken, neutered, Free to a good home, 302-545-0393.

SHELTIE PUPPIES Adorable & friendly ready for Christmas 717-449-0019

YELLOW LAB Free to good home, friendly, lovable & beautiful.
BLUE TICK COON HOUND Free to good home, 443-207-0888.

Hay

HAY.....HAY
Stored Inside
Horse Hay Round Bales \$40.
Cow Hay Round Bales \$25, Delivery Available.
302-373-5039
E-mail: beards@udel.edu



ANY WAY YOU LOOK AT IT, CHESAPEAKE CLASSIFIED CAN WORK FOR YOU!

Antiques/Art

GERMAN BEER MUGS, 1 short \$30 & 1 tall w/wooden music box \$60, or \$75 for both, purchased in Frankfurt Germany in 1969, in mint cond, 4 4 3 - 6 1 7 - 6 6 2 1 Aberdeen

Wanted To Purchase Antiques & Fine Art, 1 item Or Entire Estate Or Collection, Gold, Silver, Coins, Jewelry, Toys, Oriental, Glass, China, Lamps, Books, Textiles, Paintings, Prints almost anything old. Evergreen Auctions 973-818-1100. Email evergreenauctions@hotmail.com

Electronics

FREE 31 INCH GE TELEVISION MODEL 31GT659.
410-652-2312 (FOREST HILL)

FREE 31 INCH GE TELEVISION
Model 31GT659.
410-652-2312 (Forest Hill)

Furniture/Furnishings

8 piece Cherry Dining Room Set (4 chairs & 2 arm chairs) with leaf & matching lighted hutch, Call for info.. Other furniture pieces available, all reasonable offers will be accepted, 443-945-4898

WWW.CHESAPEAKE CLASSIFIED.COM

Furniture/Furnishings

KING SIZE HEADBOARD 2 NIGHTSTANDS DRESSER MIRROR \$100 ELKTON
410-392-6491

LONG DRESSER
White \$25 Elkton, MD
410-392-6491

New Today

Great Buy

MATTRESS/BOX SPRING: Restonic King Size pillow top matched set. Like new, \$450.00
Chester, MD
410-643-9606

General Merchandise

COMPUTER, brand new, \$900.
WHEELCHAIR, exc cond, \$200, 302-266-0375

CUCKOO-CLOCK, orig Black Forest, w/cuckoo & music. Hand crafted, painted & carved, Made in Germany, Orig. value \$1250, Will sacrifice, call to negotiate price. 443-617-6621 Aberdeen

DAN MARINO SPORTS CARD COLLECTION
Over 2,000 cards, all companys, many multiples, many money cards. Regular, Special Inserts. Book value well over \$2,000 sell for \$500. Call 443-480-3107

General Merchandise

Full Length Ranch Mink Coat, Mink Cape, Fur Lined Full length rain coat, Mink Stole and other furs approx. sized 8-10. Good condition. For sale individually or as a group. Valued \$250 up to \$1000. To see, or for more information, contact 410-745-4250.

GARDEN FOUNTAIN, whiskey barrel with plastic liner, antique hand pump, electric pump with lines, lily pads, all accessories, \$80 call 410-734-7871

NEW GAS HEATER SALE: Keep warm even when the power is off. Also propane composition. For more info. 410-658-9587

ROCKING BASSINET
Natural Color with Simmons Mattress \$100 Elkton 410-392-6491

TELEVISION 23"
Panasonic Console w/ remote. Excellent Cond. FREE! 410-679-5505

Sporting Goods

COMPLETE SET WOMEN'S GOLF CLUBS and extras - \$ 75.00 for all 443-350-5249

EXERCISE BIKE, \$10, 302-266-0375

Yard Sales on nearly every corner, find out which ones in the Classifieds

Sporting Goods

HOCKEY & BASEBALL CARDS.
Over 300. MVP, Allstar & Rookie, \$60 for all. 443-309-5189

Seasonal

2 XMAS TREES, artificial, 4 ft, lights, with stands. \$25. 443-623-1355

7 FT XMAS TREE, pre-lit, stand, like new. \$30. 443-623-1355

Tools

3 Speed Saginaw Manual Trans 1985
\$100 410-392-6491

Wanted to Buy

DEER HUNTING LEASE WANTED: will pay to hunt deer on your land Matt - 215-680-9611

**GUITARS WANTED**

(also banjos & mandolins)

Collector paying top \$\$ for Gibson, Fender, Martin & others. Any condition.
410-419-1795

SHERIFF'S SALE REAL ESTATE
PUBLIC SALE AT THE CITY/COUNTY BUILDING, 800 N.FRENCH STREET, WILMINGTON, DE 19801
WILL BE HELD TUESDAY, JANUARY 8, 2013 AT 10:00 AM.
****NEW - IN ORDER TO PURCHASE A SHERIFF SALE PROPERTY, ALL BIDDERS MUST REGISTER WITH THE SHERIFF'S OFFICE AT 9AM ON THE DAY OF SALE. TERMS OF SALE - MORTGAGE FORECLOSURES: 10% DOWN AT TIME OF SALE, BALANCE DUE ON OR BEFORE FEBRUARY 19, 2013.**
TAX FORECLOSURES: FULL PURCHASE PRICE AT TIME OF SALE.

FOR MORE INFORMATION ON PARTICULAR PROPERTIES:
www.nccde.org/sheriff and www.nccde.org/parcelview
For property title information, see the Recorder of Deeds website at www.nccde.org/deeds

TRINIDAD NAVARRO, SHERIFF

ADDRESS: 35 WESTBRIDGE ROAD BEAR 19701
PARCEL: 1103230098
SHERIFF #12-010505

ADDRESS: 251 SHAI CIRCLE BEAR 19701
PARCEL: 1103210115
SHERIFF #12-010512

ADDRESS: 621 N. OLD HARMONY ROAD NEWARK 19711
PARCEL: 0901700008
SHERIFF #12-010514

ADDRESS: 492 GENDER ROAD NEWARK 19713
PARCEL: 0903300011
SHERIFF #12-010515

ADDRESS: 31 SHULL DRIVE NEWARK 19711
PARCEL: 1803500046
SHERIFF #12-010557

ADDRESS: 126 FAIRHILL DRIVE WILMINGTON 19808
PARCEL: 0802530158
SHERIFF #12-010560

ADDRESS: 40 GILBERT COURT NEWARK 19713
PARCEL: 0902720188
SHERIFF #12-010916

ADDRESS: 203 MADISON DRIVE NEWARK 19711
PARCEL: 1802400209
SHERIFF #12-010921

ADDRESS: 219 KENMARK ROAD NEWARK 19713
PARCEL: 0902230059
SHERIFF #12-010923

ADDRESS: 39 BRITTANY LANE BEAR 19701
PARCEL: 110460251
SHERIFF #12-010564

ADDRESS: 464 JACOBSEN DRIVE UNIT 46 NEWARK 19702
PARCEL: 0902900027C0046
SHERIFF #12-010674

ADDRESS: 242 TINSLEY COURT NEWARK 19702
PARCEL: 0903740152
SHERIFF #12-010676

ADDRESS: 0 PULASKI HIGHWAY NEWARK 19702
PARCEL: 1102500006
SHERIFF #12-010839

ADDRESS: 312 GREYBULL DRIVE BEAR 19701
PARCEL: 1103340133
SHERIFF #12-010848

ADDRESS: 1209 ARUNDEL DRIVE WILMINGTON 19808
PARCEL: 0803810029
SHERIFF #12-010863

ADDRESS: 40 GILBERT COURT NEWARK 19713
PARCEL: 0902720188
SHERIFF #12-010916

ADDRESS: 203 MADISON DRIVE NEWARK 19711
PARCEL: 1802400209
SHERIFF #12-010921

ADDRESS: 219 KENMARK ROAD NEWARK 19713
PARCEL: 0902230059
SHERIFF #12-010923

ADDRESS: 210 LAKE ARROWHEAD CIRCLE BEAR 19701
PARCEL: 1102320201
SHERIFF #12-010952

ADDRESS: 27 MONTAGUE ROAD NEWARK 19713
PARCEL: 1100800191
SHERIFF #12-010966

ADDRESS: 204 RICE DRIVE BEAR 19701
PARCEL: 1103910044
SHERIFF #12-010967

ADDRESS: 4926 OLD CAPITOL TRAIL WILMINGTON 19808
PARCEL: 0805010265
SHERIFF #12-010972

ADDRESS: 311 SHAI CIRCLE BEAR 19701
PARCEL: 1103210128
SHERIFF #12-011117

ADDRESS: 1003 ROSSLEA COURT BEAR 19701
PARCEL: 1202700089
SHERIFF #12-011126

ADDRESS: 78 VERSAILLES COURT NEWARK 19702
PARCEL: 1102510085
SHERIFF #12-011146

ADDRESS: 879 BROADFIELD DRIVE NEWARK 19713
PARCEL: 1100620402
SHERIFF #12-011149

ADDRESS: 4103 GOLFVIEW DRIVE NEWARK 19702
PARCEL: 0902400015C4187
SHERIFF #12-011151

CLASSIFIEDS
Can Take You Places
410-398-1230 or 800-220-1230



Wanted to Buy

WANTED FURNITURE to buy at reasonable price. I'm a veteran and moving and need some furniture, but don't have a truck to haul furn. Please call details 410-441-9298



WANTED; DIABETIC TEST STRIPS up to \$25/box. Cash on the spot. Any kind/ any brand. Un-opened will pick up. Debbie 410-820-6540

**TRANSPORTATION****Power Boats**

TRIUMPH, 21.5, 2006, 175 Suzuki 4 stroke, very low hrs, loaded, ctr cons, t top, \$23900, 443-309-0705

Marine Access./ Storage

FOR SALE 60' COVERED BOAT SLIP BOEMIA BAY YACHT BASIN ON THE EASTERN SHORE, CHESAPEAKE CITY, MD ELECTRIC, PHONE & CABLE HOOK-UPS, HEAT AND AIR CONDITIONED SHOWERS, POOL & PICNIC AREAS SLIP # E-18 & E-19 **BEST OFFER, Serious Inquiries Only!** CALL (856) 768-3625 M-F BETWEEN 9 & 5 PM.

WWW.CHEESAPEAKE
CLASSIFIED.COM

LEGAL NOTICE

LEGAL NOTICE
RE: DEADLY WEAPON
I, Douglas Joseph Lavenburg, residing at 108 Briggs Lane, Newark, DE 19711 will make application to the judges of the Superior Court of the State of Delaware in and for New Castle County at Wilmington for the next term for a license to carry a concealed deadly weapon, or weapons, for the protection of my person(s), or property, or both.

Douglas Joseph Lavenburg
12/17/2012

np 12/21 2368832

Motorcycles/ ATVs

POLARIS RANGER, 6 wheel, very low hrs, \$6500, 443-309-0705

TWO MOTOR SCOOTERS -
MANCO HORNET 50 49CC 4 STROKE. ONLY 802, AND 221 KILOMETERS. SOLD AS A PAIR, CASH ONLY, \$650 EACHFIRM. 410-937-9620 LEAVE MESSAGE. NORTH EAST, MD.



There's treasure
at the rainbow's
end. Find yours
in the classifieds!

LEGAL NOTICE

LEGAL NOTICE
RE: DEADLY WEAPON
I, Timothy Barnett, residing at 614 Wood Chuck Pl., Bear, DE 19701 will make application to the judges of the Superior Court of the State of Delaware in and for New Castle County at Wilmington for the next term for a license to carry a concealed deadly weapon, or weapons, for the protection of my person(s), or property, or both.

Timothy Barnett
12/20/2012

np 12/28 2369271

Vans/Mini Vans

1988 GMC SAFARI
Good work van Jasper engine still runs well \$800 or b/o 443-617-2723

2001 FORD WINDSTAR SE, V6, 86k, exc cond, book value \$4000, asking \$2800, 443-907-6319.

CHESAPEAKE CLASSIFIEDS
410-398-1230 800-220-1230
www.chesapeakeclassified.com

Autos

DONATE YOUR CAR RECEIVE \$1000 GROCERY COUPONS
FAST FREE TOWING - 24hr Response UNIT-ED BREAST CANCER FOUNDATION Free Mammograms & Breast Cancer Info www.ubcf.info 888-332-9533

LEGAL NOTICE

Public Auction
SATURDAY, DECEMBER 29TH, 2012
10:00 A.M.
Mulch Yard - Trucks - Trailers - Tools

1994 White GMC Cummins Power 10 sp. AC, Radio, 6 Wheeler w/Lift Axle, 16' Mulch Dump, 1998 Freightliner FL 600 16' Dump Cat. Eng. 5 sp. 87,500 miles, 12' Tandem Tag Along Trailer w/Ramps, 2000 Easy Dump Tandem Trl., Boss 8' V Plow, Grapple Hook Quick Attach, 35 Concrete Barriers, 15-20 Tractor Trl. Loads of Wood Chips. Tools: Bench Grinder Air Tools, Generac Welder Generator 830-20, Band Saw, 1980 Honda Scooter C-70 4000 miles Good Cond., Stahl & Craftsman Chain Saws, Goat Cart, Barrel Wood Stove w/Blower & Thermostat, Montgomery Ward 7hp Lawn Tractor, 2-500 Gal Fuel Tanks w/Elec. Pumps, 40' Alum. Storage Trl. Fully Wire w/Work Room in Front.

Terms: Cash, Check

Auction Ordered By:
Robert Gallo Ind. Eq.
1715 River Rd.
New Castle, DE

Hunter's Auction Service, Inc.
2084 Jacob Tome Memorial Hwy.
Port Deposit, MD 21904
DE License # 12 0501650 47

Directions: From Rt 40 Turn onto Rt 72. Drive approx. 6 miles to Rt. 7. Turn Left at Del Refinery 1/2 mile cross RR Tracks. 1st Road on Right. Signs Posted.

cw 12/26,28 np 12/28 2368899

PUBLIC HEARINGS NOTICE

Review of Agency Regulations
Executive Order No. 36
Jack A. Markell, Governor

On June 14, 2012, Governor Jack Markell signed Executive Order No. 36, which establishes a process for the review of certain regulations by state agencies. The Order requires agencies to solicit public input to identify regulations adopted three years ago or more for possible modification or elimination. **Do you have specific ideas about which regulations you believe should be modified or eliminated? If so, we want to hear from you.**

NOTICE IS HEREBY GIVEN that the agencies listed below are now accepting public comments in connection with Executive Order No. 36.

Department of Natural Resources and Environmental Control (DNREC)

Tuesday January 22, 2013 6pm

Department of Safety & Homeland Security (DSHS)
Wednesday January 23, 2013 6pm

Department of State
Wednesday January 23, 2013 8pm

Delaware Department of Transportation
Thursday January 24, 2013 6pm

All New Castle County meetings (listed above) will be held at the:
Carvel State Office Building
2nd Floor, Mezzanine Level
820 N. French Street
Wilmington, DE

This location is accessible to persons with disabilities. Any person having special needs or requiring special aid, such as an interpreter for the hearing impaired, is requested to contact DelDOT by phone or mail one week in advance. For further information contact the Office of Public Relations at 1-800-652-5600 (in DE) or 302-760-2080, write to the address above, or send via email to dotpr@state.de.us

PUBLIC NOTICE

np 12/28

2369296

LEGAL NOTICE

THE COURT OF COMMON PLEAS
FOR THE STATE OF DELAWARE IN
AND FOR NEW CASTLE COUNTY
IN RE: CHANGE OF NAME OF
ERIC EVANS
Petitioner(s)
TO
ERIC MOSES
NOTICE IS HEREBY GIVEN that
ERIC EVANS intends to present a Petition to the Court of Common Pleas for the State of Delaware in and for New Castle County, to change his/her name to ERIC MOSES
ERIC EVANS
Petitioner
Dated: 11/28/2012

np 12/14,21,28

2366801

THE COURT OF COMMON PLEAS
FOR THE STATE OF DELAWARE IN
AND FOR NEW CASTLE COUNTY
IN RE: CHANGE OF NAME OF
MELISSA A. FORTE
Petitioner(s)
TO
MELISSA A. ZOLADKIEWICZ
NOTICE IS HEREBY GIVEN that
MELISSA A. FORTE intends to present a Petition to the Court of Common Pleas for the State of Delaware in and for New Castle County, to change his/her name to MELISSA A. ZOLADKIEWICZ

MELISSA A. FORTE
Petitioner
Dated: 12/7/2012

np 12/14,21,28

2367154

THE COURT OF COMMON PLEAS
FOR THE STATE OF DELAWARE IN
AND FOR NEW CASTLE COUNTY
IN RE: CHANGE OF NAME OF
ASHTON ISIAH BORKOSKI (MINOR)
Petitioner(s)
TO
ASHTON ISIAH ROSADO (MINOR)
NOTICE IS HEREBY GIVEN that
ASHTON ISIAH BORKOSKI (MINOR) intends to present a Petition to the Court of Common Pleas for the State of Delaware in and for New Castle County, to change his/her name to ASHTON ISIAH ROSADO (MINOR)

TINA M. ROSADO
Petitioner
Dated: 12/20/2012

np 12/28, 1/4, 1/11

FORTUNATO, INC., t/a Four Seasons Liquors, located at the address of 702 Plaza Drive, Route 896 & Four Seasons Pkwy, Newark, DE 19702, has on December 10, 2012 filed an application with the Office of Alcoholic Beverage Control Commissioner for approval of a "change of location" within the same shopping center, being Four Seasons Plaza Shopping Center, from their current location of 702 Plaza Drive, Route 896 & Four Seasons Pkwy, Newark, DE 19702 to the premises located at 680 Plaza Drive, Route 896 & Four Seasons Pkwy, Newark, DE 19702.

Persons who are against this application should provide written notice of their objections to the Commissioner. For the Commissioner to be required to hold a hearing to consider additional input from persons against the application, the Commissioner must receive one or more documents containing a total of at least 10 signatures of residents or property owners located within 1 mile of the premises or in any incorporated areas located within 1 mile of the premises. The protest(s) must be filed with the Office of the Alcoholic Beverage Control Commissioner at the 3rd Floor, Carvel State Building, 820 North French Street, Wilmington, Delaware 19801. The protest(s) must be received by the Commissioner's office on or before January 10, 2013. Failure to file such a protest may result in the Commissioner considering the application without further notice, input or hearing. If anyone has questions regarding this matter, please contact the Commissioner's office at (302) 577-5222.

np 12/14,21,28

2367299

CECIL WHIG CLASSIFIEDS

410-398-1230 or 800-220-1230

WEBSITE AT

WWW.CHEESAPEAKECLASSIFIED.COM

LEGAL NOTICE**LEGAL NOTICE****JANUARY QUARTER 2012/13
SUPPLEMENTAL ASSESSMENTS**

The Supplemental Assessment Roll for New Castle County and the City of Wilmington property and school taxes for the January Quarter of the 2012/13 tax year may be inspected in the offices of the Assessment Division of the New Castle County Department of Land Use, New Castle County Government Service Center, 87 Reads Way, Corporate Commons, New Castle, DE, from 8:00 a.m. to 4:00 p.m., Monday through Friday.

These Supplemental Assessments will become effective January 1, 2013. Forms to appeal these Supplemental Assessments may be obtained from the Assessment Division at the address aforesaid and must be filed with the Assessment Division no later than 4:00 p.m. on January 31, 2013. The Board of Assessment Review of New Castle County will sit in the New Castle County Government Center, or some other public place to be announced, to hear appeals from these Supplemental Assessments between March 1, 2013 and April 30, 2013, unless the Board continues the hearings. The exact dates and times of such hearings will be provided to the appellants in accordance with 9 Del. C. Sec. 8311.

np 12/28, 1/4

2369453

**CITY OF NEWARK
DELAWARE
CITY COUNCIL
PUBLIC HEARING
NOTICE**

January 14, 2013 - 7:00 P.M.

Pursuant to Section 402.2 of the City Charter and Section 32-79 of the Code of the City of Newark, Delaware, notice is hereby given of a public hearing at a regular meeting of the Council in the Council Chamber at the Municipal Building, 220 Elkton Road, Newark, Delaware, on Monday, January 14, 2013 at 7:00 p.m., at which time the Council will consider for Second Reading and Final Passage the following proposed Ordinance:

Bill 12-42

An Ordinance Amending Chapter 32, Zoning, Code of the City of Newark, Delaware, By Establishing an Adult Community 80/20 District

Patricia M. Fogg, CMC
City Secretary

np 12/28

2368307

THE COURT OF COMMON PLEAS
FOR THE STATE OF DELAWARE IN
AND FOR NEW CASTLE COUNTY
IN RE: CHANGE OF NAME OF
EDWARD PHILLIPS
Petitioner(s)
TO
JAMES EDWARD PHILLIPS
NOTICE IS HEREBY GIVEN that
EDWARD PHILLIPS intends to present a Petition to the Court of Common Pleas for the State of Delaware in and for New Castle County, to change his/her name to JAMES EDWARD PHILLIPS

JAMES E. PHILLIPS
Petitioner
Dated: 12/20/2012

np 12/28, 1/4, 1/11

2369305

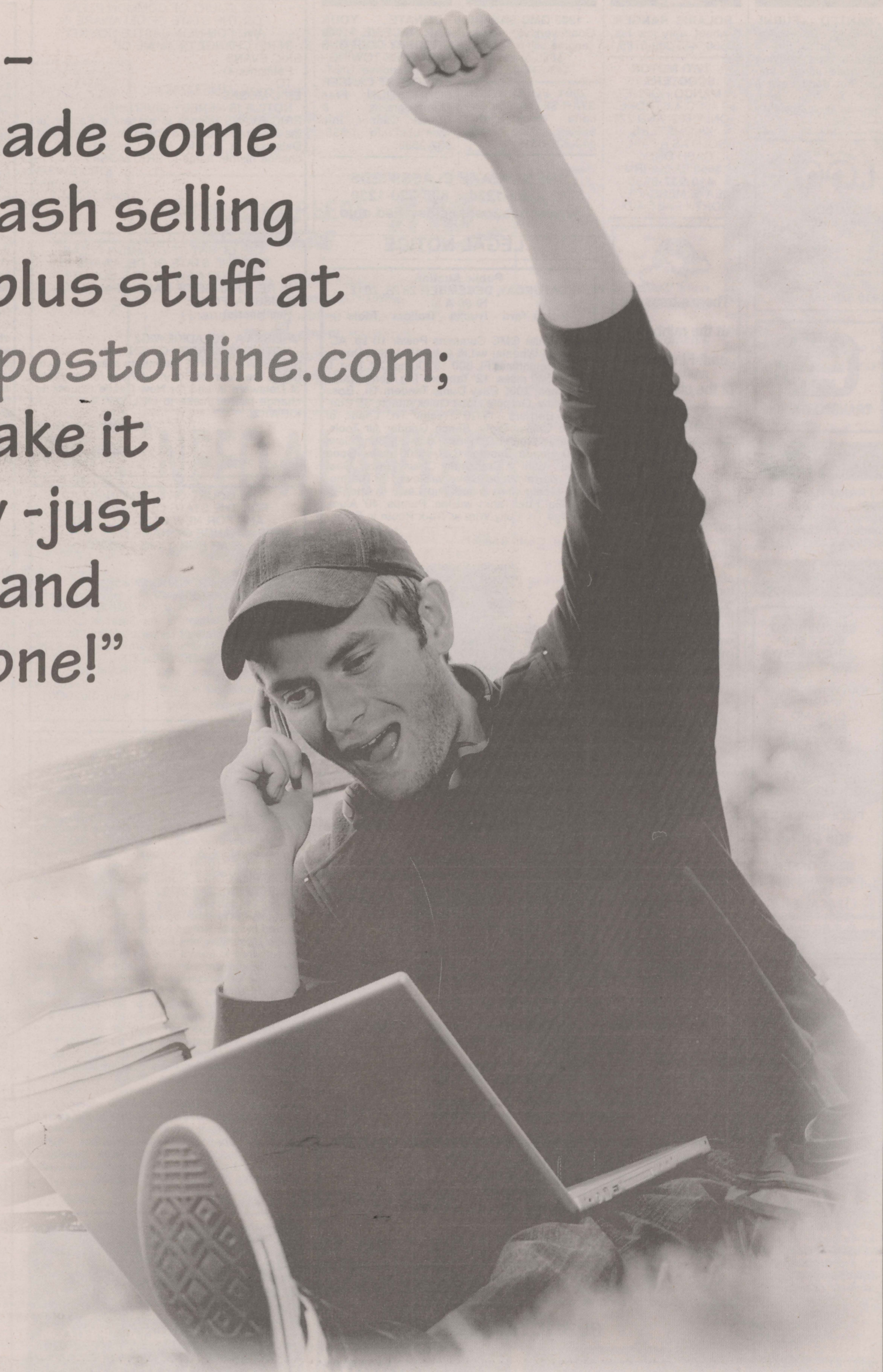
THE COURT OF COMMON PLEAS
FOR THE STATE OF DELAWARE IN
AND FOR NEW CASTLE COUNTY
IN RE: CHANGE OF NAME OF
MILVIA ACEVEDO
Petitioner(s)
TO
MILVIA EDELMIRA PALENCIA HERRERA
NOTICE IS HEREBY GIVEN that
MILVIA ACEVEDO intends to present a Petition to the Court of Common Pleas for the State of Delaware in and for New Castle County, to change his/her name to MILVIA EDELMIRA PALENCIA HERRERA

MILVIA ACEVEDO
Petitioner
Dated: 12/4/2012

np 12/14,21,28

2366515

*“Sweet –
I just made some
great cash selling
my surplus stuff at
newarkpostonline.com;
they make it
so easy -just
1, 2, 3 and
I was done!”*



Holey Moley!

If you need a new
Furnace, A/C or Heat Pump System.
YOU have got to check this out!

and take
advantage of

60
months

*Approved buyers

For a limited time only.



TRANE

It's Hard To Stop A Trane.

Save up to
\$3600

0 % APR
No-Interest
Financing*



on a New

Trane XL
Comfort system

ServiceToday®

The Areas Largest Employee Owned Trane Dealer

Heating • Air Conditioning

Plumbing • Electrical

MARYLAND LIC# 01-2615 • DELAWARE LIC# HM0000332
PENNSYLVANIA LIC# PA068963 • NEW JERSEY LIC# 13VH05880300



servicetodayinc.com 800-659-2273

*See your independent Trane dealer for complete program eligibility, dates, details and restrictions. Special financing offers OR instant rebate from \$100 up to \$1,250 valid on qualifying systems only. All sales must be to homeowners in the United States. Void where prohibited. The Home Projects Visa card is issued by Wells Fargo Financial National Bank. Special terms apply to qualifying purchases charged with approval credit at participating merchants. The special terms APR will continue to apply until all qualifying purchases are paid in full. Reduced Rate APR: Monthly payments of at least 1.75% of the purchase balance are required during the special terms period. 0% APR: The minimum monthly payment will be the amount that will pay for the purchase in full in equal payments during the special terms period. For newly opened accounts, the regular APR is 27.99%. The APR will vary with the market based on the U.S. Prime Rate. The regular APR is given as of 1/10/2012. If you are charged interest in any billing cycle, the minimum interest charge will be \$1.00. The regular APR will apply to certain fees such as a late payment fee or if you use the card for other transactions. If you use the card for cash advances, the cash advance fee is 5.0% of the amount of the cash advance, but not less than \$10.00. Monthly payment if shown based on \$xx purchase.

It's Easy...

at Anchor Buick GMC

PRICES WILL NEVER BE
THIS LOW AGAIN!

Especially with year-end blowout special prices!



2012 Buick Regal

W Eassist • STK#212B157
4cyl, Auto, Sunroof, All Power

MSRP	\$31,080
Anchor Discount	-\$2,345
Rebate	-\$1,000
GM Conquest	-\$1,000*
USAA Member	-\$750*
Your Final Price	\$25,985*



2012 Buick Lacrosse

Leather PKG • STK#212B106
V6, Auto, All Power Equipment

MSRP	\$33,580
Anchor Discount	-\$2,270
Rebate	-\$2,000
Bonus Cash	-\$500
GM Conquest	-\$1,000*
USAA Member	-\$750*
Your Final Price	\$27,060*



2012 Buick Enclave

Leather PKG • STK#212B02
V6, Auto, Sunroof, Tow PKG, Loaded

MSRP	\$42,845
Anchor Discount	-\$3,506
Rebate	-\$2,000
GM Conquest	-\$1,000*
USAA Member	-\$750*
Your Final Price	\$35,589*



2012 GMC Acadia

FWD SL • STK#212G382
V6, Auto, A/C, Bluetooth, Loaded

MSRP	\$33,990
Anchor Discount	-\$2,671
Rebate	-\$2,000
Lease Conquest	-\$2,000*
USAA Member	-\$750*
Your Final Price	\$26,569*



2012 GMC Terrain

AWD SLE 1 • STK#212G192
4 Cyl, 32 MPG, Auto Loaded

MSRP	\$28,315
Anchor Discount	-\$2,198
Bonus Cash	-\$500
Lease Conquest	-\$1,000*
USAA Member	-\$750*
Your Final Price	\$23,867*



2012 GMC Canyon 4x4

Crew Cab • STK#212G376
SLE Z71, 5 Cyl, Auto, Tonneau Cover,
Chrome Steps, Loaded! LAST ONE!

MSRP	\$32,150
Anchor Discount	-\$2,646
Rebate	-\$1,000
Lease Conquest	-\$2,000*
USAA Member	-\$750*
Your Final Price	\$25,754*



2012 GMC Sierra

EXT Cab SL • STK#212G303
V8, Auto, Tow PKG, Locking Rear

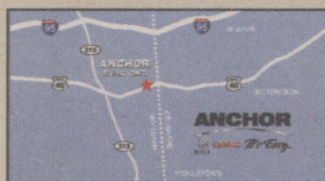
MSRP	\$32,065
Anchor Discount	-\$3,138
Rebate	-\$3,500
Bonus Cash	-\$1,000
Trade Bonus	-\$1,000*
Lease Conquest	-\$2,000*
USAA Member	-\$750*
Your Final Price	\$20,677*



2012 GMC Sierra

Crew Cab SLE • STK#212G280
2WD, V8, Auto, CD, Tow PKG,
Bluetooth, Locking Rear

MSRP	\$36,410
Anchor Discount	-\$3,639
Rebate	-\$3,000
Bonus Cash	-\$1,000
PKG Discount	-\$1,000
Trade Bonus	-\$1,000*
Lease Conquest	-\$2,000*
USAA Member	-\$750*
Your Final Price	\$24,021*



On Rt. 40 at the MD/Del. State Line
across from the Super Walmart.

VISIT US TODAY!

1 Automotive Boulevard
Elkton, MD 21921 • (443) 406-2634

www.AnchorBuickGMC.com

No Maryland sales tax to out-of-state buyers.

Anchor honors all GM pricing for family and friends along with credit union member pricing, Costco program, and military discounts. Tax and tags extra. These prices include all available incentives. Must qualify for all incentives to receive sale price. See dealer for details referring to rebates and these special incentives. Not all incentives compatible with some GM programs. *Lease Conquest, *Trade Bonus, *USAA Member Incentive *GM Conquest

ANCHOR



BUICK

GMC *It's Easy...*