

The Review

Vol. 104, No. 5

University of Delaware, Newark, DE

Friday, Sept. 19, 1980

Faculty member joins SPA

Film selection okayed

By MARY CUNNINGHAM

The Faculty Senate student life committee voted unanimously at its meeting Tuesday to uphold the campus film selection process of the Student Program Association (SPA) and recommend that the Senate appoint a faculty member to the SPA films committee.

Senate committee chairman Ken Haas said he will inform the Senate and the SPA of the committee's decision, which also included asking the student group to "more carefully consider community sentiment" when choosing films. The faculty appointee, chosen by SPA and the student life committee and approved by the full Senate, will have a vote on the SPA films committee in its selection of films.

Haas hoped the appointee would act as a representative of faculty opinion. "Nobody will be entirely pleased with the decision, but this is the best step we could have taken without censorship or taking away students' responsibilities," he said. "By appointing a faculty member, the entire university community will be represented in the film selection process."

"Considering what could have been done, I think the decision the committee made was a reasonable one," said Gary Cahall, SPA films committee chairman. "I was glad that the committee agreed with our right to show movies and the selection with our right to show movies and the selection process. Hopefully, the faculty member will be more of a liaison between SPA and the faculty than a watchdog."

"It is rather ironic, however," said Cahall, "that the films committee will be

the only one to have a faculty appointee." The SPA, responsible for most of the campus' student activities, is composed of four committees (cultural events, musical events, special events and films).

The 75-member film committee holds special meetings twice a year to select films for the coming semester, Cahall said, with each committee member receiving an equal vote. The selections are mainly based on student interests and surveys, although the group does solicit ideas for titles and series from the faculty and has often co-sponsored films.

In the past several years, SPA has shown nearly 50 films each semester, four nights a week. Traditionally, no more than two or three of these have had an X-rating, according to Cahall.

He explained that X-ratings are given by the Motion Picture Association of America (MPAA) on the basis of profane language, violence or sex. "The dividing line between 'softcore' and 'hardcore' sex is a nebulous one at best," he said.

"With the addition of a new adult library to Newark, the sensitivity of the community has been heightened," said Dean of Students Raymond Eddy. "The issue at hand is the place these films have in a higher education community."

In other business, the recent decision by university President E.A. Trabant to ban all pinball machines from the Student Center was discussed. Trabant said that the machines, formerly in the games room and first floor alcove, were "games of chance" and ordered that they be replaced by video games, or "games of skill."

Haas asked if the committee had any authority to make recommendations to Trabant. Eddy said that the matter would have to be brought before the full Senate at its next meeting first.

Storm blacks out campus

A power failure left three-fourths of Newark without electricity at about 12:50 a.m. Thursday morning, according to Security.

Christiana West, Pencader dorms A, B, C and D, Pencader Dining Hall and the Christiana and Pencader Commons I were all without power for about 40 minutes, Security said.

Some people were trapped in the elevators at Christiana West during the power outage, said Chris Reiter, an RA on the fourteenth floor.

This occurred when the elevator's emergency generator failed to come on after the power went out, Security said.

Power was restored to north campus at 1:30 a.m.



Review photo by Neal Williamson

Small fire evacuates Christiana West

A cookbook left on a hot oven burner started a small fire in Christiana Towers West about noon Wednesday filling the fourth floor with smoke, according to Security.

Although three fire trucks from Newark's fire department were called, there were only minor damages to the apartment and no one was injured, Security said.

Residents reported that they smelled smoke

up to the eighth floor, but many students did not leave their rooms even though the building was ordered evacuated by Security.

"I wasn't going to go until I saw the smoke," said a fourth floor resident, "I thought it was just another false alarm."

There were two false alarms last week in the Christiana complex, according to residents.

UD needs costlier liquor license

By KAREN McKELVIE

The university must apply for a more expensive "unlimited gathering" liquor license because of a new service allowing beer and wine to be served during dinner hours in the Faculty Dining Room, according to Victor Capodanno, co-ordinator of the Pub on the Hill.

The service, which started in September, offers alcoholic beverages with dinner five days a week between 5-7 p.m.

"If the Faculty Dining

Room idea is a success, the cost of the Student Center's liquor license will be raised from \$200 to \$500 per year," Capodanno said.

For the past six years the university has spent \$1,400 per year for three separate liquor licenses to permit drinking in Clayton Hall, the Pencader Dining Hall and the Student Center.

Each license, called annual gathering licenses, are available exclusively to non-profit organizations and are valid from Jan. 1 to Dec. 31. They must be renewed each year.

Both Clayton Hall and Pencader Dining Hall have unlimited gathering licenses which cost \$500 per year. The Student Center, however, has a limit of 75 gatherings on their license at a cost of \$200 per year. Clayton Hall also has a \$200 Sunday serving license.

Because of the new service

the Student Center will exceed the limit of 75 gatherings, and thus must apply for the more expensive unlimited gathering license, Capodanno added.

To obtain, or reapply for a license, organizations must submit an application by Oct. 1 to the Delaware Alcohol Beverage Committee (DABC) stating that they are a non-profit organization, said Georganna McCormick, information officer for the DABC.

"The application is approved by the DABC with the understanding that every event at which alcohol is distributed is reported to the commission, and that the organization is subject to inspection at any time," McCormick said.

McCormick added that if an organization ever exceeds its allotted amount of gatherings it is required to immediately renew its license.

on the inside

Crime increase

Assaults on the rise... 4

Abracadabra

The mystic world revealed?... 9

High hopes

Hens vs Owls at the Vet Saturday... 16



SPRING SEMESTER IN ENGLAND

15 hours credit in Theatre, English, and Honors Program, Emphasizing English Literature and Drama

Live in London flatlet

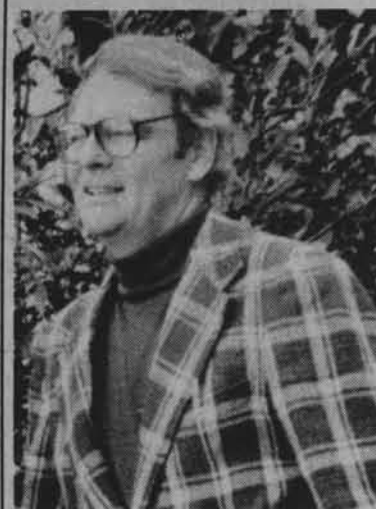
Visit Oxford, Cambridge, Canterbury, Stratford, etc.

Cost: \$756 (London accommodations), plus tuition, board, and air fare

Contact Professor Jay Halio (Provost's Office, 738-2101) before Monday, October 6.

If you want information about the semester in London program, please attend either of two planning sessions being held on Monday, September 22 in room 114 Memorial (4:00 P.M. or 7:30 P.M.).

Maxwell tours to gain votes



"I'm tired of being bothered by all you politicians. We don't hear from you all year long until election time rolls around."

Delaware Democratic Candidate for Congress Robert Maxwell was met with similar feelings of dissatisfaction and apathy more than once during a walking tour of several Newark residences off Rt. 273 on Monday. Maxwell is challenging Republican incumbent Tom Evans in the November election.

The Maxwell Campaign is targeting its efforts in areas such as Newark where voters in previous elections have not usually affiliated themselves with any particular party. Newark is particularly important since it is one of the largest of these "swing" districts. Maxwell has conducted forty of these tours in the last two months.

Desegregation and the quality of education in the local school districts were the major concerns expressed by individuals who spoke with the candidate on his tour.

"Since desegregation took place I feel the education system in the New Castle County Schools has deteriorated," said one resident.

Maxwell, a social studies teacher in the New Castle County District, said in a press conference held in Wilmington on Wednesday, "education must remain one of our highest priorities in America."

Maxwell has served in the Delaware House of Representatives for four years. He was the first Democrat elected from his representative district in 16 years.

STEREO CLEARANCE HOUSE
HAS LOWEST STEREO
PRICES



Pioneer SX 780 Receiver, 189
Pioneer PL 30 Turntable, 99
Akai 6XMIQ Cassette, 199

Our Free Catalog has many more deals on major brands, even lower prices on our monthly specials sheet. Send now and find out how to buy current \$7.98 list lp's for \$3.69. Stereo Clearance House Dept. BL23 1029 Jacoby St., Johnstown, Pa. 15902. Phone Quotes 814-536-1611

Crackdown to increase

Alcohol-related arrests continue

Thirty-one people were arrested in Newark on alcohol-related offenses last week, Newark police reported. Of those arrested "many but not most were, university students," according to Newark Police Captain Frederick Herald.

Most of the arrests, which were for under-aged drinking, disorderly conduct, criminal mischief, and public drinking, occurred on Main Street, said police. Newark public drinking ordinances prohibit drinking within 150 feet of a licensed drinking establishment and in public streets.

"Crackdowns will continue as long as school is in session," said Herald. "Every weekend we'll have special patrols out looking for this kind of offense. We're going to be very tough on this. No warnings will be given."

Herald explained that when school is in ses-

sion the crime rate goes up, not only because of the influx of students into the town, but also because many more non-students are attracted to campus during this time.

The police crackdown on alcohol-related offenses began last spring when raids at the Stone Balloon, Deer Park, private parties as well as on-the-street arrests totalled well over 200 in the last three weeks of the semester.

Police said they will also continue to take a "hard stance" against out-door parties. Last weekend police responded to a noise complaint at Alpha Tau Omega fraternity where a party was being held. Fraternity members complied with the request and no arrests were made.

Violations of local drinking ordinances are misdemeanors and are penalized by nominal fines.

Commencement move proposed

The university administration has proposed that commencement no longer be held in Delaware Stadium because the ceremony has become "impersonal," according to Ken Beach, president of the Delaware Undergraduate Student Congress (DUSC) at Wednesday's meeting.

The administration feels that tailgates that begin early graduation morning and continue throughout the day, and fireworks set off during the exercises are not compatible with the dignity of the ceremonies, said Beach.

Stuart Sharkey, vice-president of Student Affairs, has asked DUSC for student input into the decision, Beach said.

The administration has

suggested that there be a "split-commencement" with some colleges graduating in the morning and others in the afternoon on the mall near Hullahen Hall, according to Beach.

DUSC
RSN

"I don't know if this is what we want to go with," Beach said of the proposal. DUSC is forming an ad hoc committee to recommend alternatives more acceptable to the student body.

In other business:

• A newsletter describing the meetings and activities of all campus organizations will be published by DUSC.

It will be available beginning Oct. 3 and, thereafter, the last Friday of every month.

• DUSC is continuing its massive letter-writing campaign to convince university President E.A. Trabant that students support the \$9 activities fee. At Sunday's Steve Forbert concert, the Student Program Association passed out flyers asking students to write letters to Trabant before Oct. 3.

• The lobby committee will decide DUSC's stand on the dining hall student managers' request for a pay raise and what action to take regarding Newark's adult bookstore.

Are you gonna get a sweetheart for a boss?

Or a nasty tempered miser? Don't just pick a job and pray. Become a Provident Mutual life insurance agent and be your own boss.

Stop by our campus office and let's discuss the advantages of joining our Campus Internship Program. The money. The challenge. And your terrific new boss.



PROVIDENT MUTUAL
LIFE INSURANCE COMPANY OF PHILADELPHIA



TOPKIS ASSOCIATES

Local Representatives
Topkis Associates
100 Chapmen Rd.
Newark, DE 19711
For More Information
Please Contact:
Ray Bree 731-7350

STATED

39 East Main Street, Newark 368-3161



ENDS SAT.

"GONE WITH THE WIND"

STARRING
CLARK GABLE
VIVIEN LEIGH



Winner of Ten Academy Awards

Shows
Fri. 7:30
Sat. 2:00, 7:30

Sun.-Tues. 7:30, Sun. 2:00 Matinee

DAVID LEAN'S FILM OF BORIS PASTERNAK'S
DOCTOR ZHIVAGO

STARRING
GERALDINE CHAPLIN • JULIE CHRISTIE
ALEC GUINNESS • SIOBHAN McKENNA • R. OMAR SHARIF (AS ZHIVAGO) ROD STEIGER



Friday Midnight Movie
A RALPH BAKSHI FILM
WIZARDS

SATURDAYS AT MIDNIGHT
ROCKY HORROR PICTURE SHOW

women's medical center

Confidential Service

birth control counseling

free early detection pregnancy testing

outpatient abortion facility

(215) 265-1880

20 minutes from Philadelphia

DeKALB PIKE AND BORO LINE ROAD
KING OF PRUSSIA, PA 19406

DR. HOWARD B. STROMWASSER
OPTOMETRIST
ANNOUNCES THE OPENING OF HIS NEW OFFICE FOR
EXAMINATION OF THE EYES
CONTACT LENSES

At Office Also Located
92 East Main Street 3 East Main Street
Newark, Delaware 19711 Rising Sun, Maryland 21911
302-368-4424 301-658-4920

FIGHTIN' BLUE HENS



WDEL
1150 AM RADIO

©1980 WDEL RADIO

Six more female students assaulted

Six sexual and physical assaults were reported to Security since last Thursday, bringing the total number of reported assaults of university students to 11 in the last week.

Six of the women assaulted said they were punched in the stomach and chest by a white male bicyclist, Security said.

Most of the assaults occurred on Tuesday and Thursday nights in the area of North College Avenue and near Memorial Hall, said

Security. Two of the women, however, were attacked at 9:30 a.m. in separate incidents on North College Avenue last Tuesday.

Three more attacks occurred on Thursday. Security reported two assaults at approximately 8 p.m. One happened in the vicinity of Academy Street Tennis Courts and another in the area of Memorial Hall. The third attack reportedly occurred at 9 p.m. in the Mechanical Hall area.

All the victims said that after being struck, the assailants made no further attempt to harm them, Security said.

Two women were assaulted Sunday evening near Morris Library by apparently different assailants, but refused to file a formal complaint with Security.

In addition to the six officers normally on duty at night, Security has assigned a special patrol to investigate the assaults.

Still no pay hike for student managers

Dining hall student managers have not received the pay raise they have been requesting because the university cannot afford to increase all employee wages each time minimum wage goes up, reported Charles Christian, director of Personnel.

Student managers have requested that the 50 cent difference between their pay and that of regular student workers be reinstated. They currently earn \$3.30 per hour, 20 cents more than student employees, said John Hamilton, student manager of Rodney dining hall.

Christian was not able to say whether student managers would be earning more than minimum wage, which is scheduled to increase to \$3.35 per hour in January. However, the whole university pay scale will be re-examined at that time, he said.

Christian explained that, although a few employees at the lower end of the pay scale have gotten pay raises as minimum wage rose, the majority of employees have not.

The lowest pay category, which is set at minimum wage, has increased over time, said Christian. The higher pay categories (including student managers) have not increased, resulting in the narrowing

or "compression" of the wage scale.

"We have a management position," said Doug Vandembosch, assistant student manager at Rodney. "Our job entails all the extra work and responsibilities of any management position," said Vandembosch, who believes that extra work merits pay higher than that of regular student workers.

Review funds investigated

Lt. Richard Turner of Security has announced that an investigation into \$3,000 in missing Review checks should be concluded within the week.

The investigation has been going on since the beginning

of the semester when a Review business staff member discovered the missing checks.

Bank investigators, Security, and Newark police have participated in the investigation.

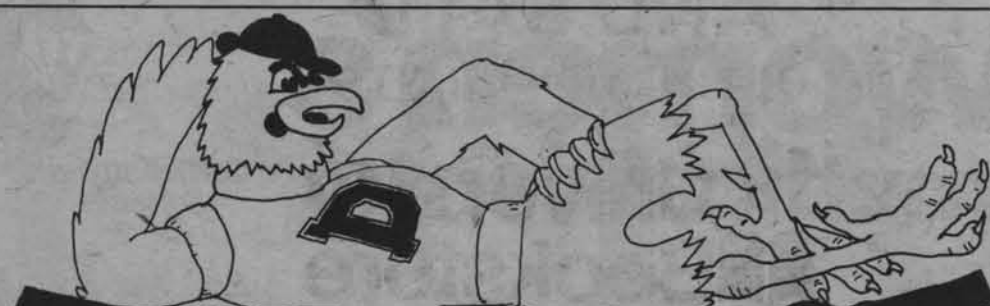
Correction

In the Feb. 16 issue of The Review, the article entitled "New life course exercise trail" said that Blue Cross/Blue Shield gave the university \$24,000. It should have read \$2,400. This was a reporting error.

The winner of the second place prize in last week's Miller Contest was Pi Kappa Alpha fraternity, not Phi Kappa Tau, as was reported in the Sept. 16 Review.

This was a reporting error.

use
Review
classifieds



THE ROOST

Special Offer:

BUY ANY
Sub or Sandwich
AND
The Drink Is

FREE!

Grainery Station
(Next to Winston's)
100 Elkton Rd.
Ph: 453-0281

Mon.-Thurs. 10-11 p.m.
Fri.-Sat. 10-midnite
Sunday 12-8 p.m.



Explore Internships

WEDNESDAY, SEPTEMBER 24—11 A.M. - 1:30 P.M.
RODNEY ROOM, STUDENT CENTER

- ★ Meet local agencies providing off-campus internships
- ★ Explore credit options in college and departmental internship programs
- ★ Review directories of available internships
- ★ Speak with a counselor about arranging an internship for yourself
- ★ Discuss full-time internship experiences in Washington, D.C. with the WASHINGTON CENTER FOR LEARNING ALTERNATIVES

Experiential Expo'80

SPONSORED BY:
CAREER PLANNING & PLACEMENT
RAUB HALL-----738-1231

Something's Happening

Friday

FILM — "Pink Flamingoes" and "Blank Generation." 7 p.m. and 10:30 p.m. 140 Smith Hall.

PARTY — "Beat Temple Open Campus Party." Phi Kappa Tau. Live music by Traveller. 9 p.m. to ?

HAPPY HOUR — "Weekend Unwinder." 4 p.m. to 7 p.m. Kappa Alpha. Free.

HAPPY HOUR — 4 p.m. to 8 p.m. Tau Kappa Epsilon. 50 cents.

HAPPY HOUR — 4 p.m. to 8 p.m. Pi Kappa Alpha. I.D. required.

HAPPY HOUR — 4 p.m. to ? Lambda Chi Alpha. 163 W. Main St.

HAPPY HOUR — 4 p.m. to 7 p.m. Alpha Tau Omega. 153 Courtney St.

RADIO PROGRAM — "Folk Festival USA." 10 a.m. WXDR 91.3 FM

GATHERING — Inter-Varsity Christian Fellowship. 7 p.m. Ewing Room, Student Center.

COFFEE HOUSE — Delaware Gay Community. 8 p.m. to midnight. Daugherty Hall. Sponsored by the Gay Student Union. For information call 738-8066 or 737-1662.

GATHERING — Lutheran Community Worship. Campus Ministry Center. 247 Haines St.

MEETING — "Speaker from the MCC Church." 8 p.m. 201 Hartshorn Gym. Sponsored by the Gay Student Union. For information call 738-8066 or 737-1662.

Saturday

FILM — "North Dallas Forty." 7 p.m., 9:30 p.m. and midnight. 140 Smith Hall.

DANCE — Square dance. 8 p.m. Hartshorn Gym. Sponsored by the Blue Hen Squares. Caller Tom Burns. Everyone welcome.

RADIO PROGRAM — "The Latin Show." 2 p.m. to 4 p.m. WXDR 91.3 FM.

Sunday

FILM — "One Sings, the Other Doesn't." 7:30 p.m. 140 Smith Hall.

MEAL — Friends Fellowship Sunday Supper. 5:30 p.m. to 7 p.m. 308 Apple Rd. First Fall gathering. "Exploring Quaker Heritage." Free Supper, casual dress.

RADIO PROGRAM — "Hip City Part II." 5 p.m. to 8 p.m. WXDR 91.3 FM. Soul and rhythm and blues.

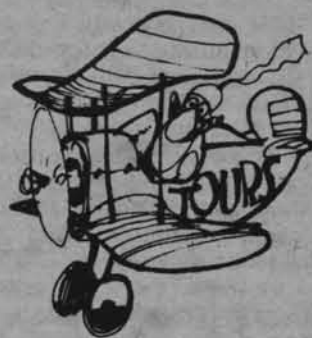
PROGRAM — Scope V Leadership Development Workshop. 1:30 p.m. Bacchus, Student Center. Sponsored by Student Activities Office. For all student organization leaders.

GATHERING — Lutheran Community Worship. Campus Ministry Center. 247 Haines St.

MEETING — "Speaker from the MCC Church." 8 p.m. 201 Hartshorn Gym. Sponsored by the Gay Student Union. For information call 738-8066 or 737-1662.

GATHERING — Lutheran Community Worship. Campus Ministry Center. 247 Haines St.

MEETING — "Speaker from the MCC Church." 8 p.m. 201 Hartshorn Gym. Sponsored by the Gay Student Union. For information call 738-8066 or 737-1662.



NOTICE — Christian Fellowship Bible School 9:30 a.m. Worship and Praise 10:45 a.m. every Sunday. YWCA. 318 S. College Ave. Call 737-3703 or 738-5222.

Monday

RUSH — 7:30 p.m. to 10 p.m. Delta Tau Delta. 158 S. College. Refreshments.

RADIO PROGRAM — "Over Easy." 6 p.m. to 10 a.m. WXDR 91.3 FM. Light progressive music.

MEETING — PRSSA. 4 p.m. 336 Kirkbride Office Building.

PROGRAM — SCOPE Treasures workshop. 7 p.m. to 8:30 p.m. Collins Room, Student Center. Sponsored by Student Activities Office. Mandatory for all student organization treasurers.

PROGRAM — SCOPE Presidents Workshop. 7 p.m. to 8:30 p.m. Kirkwood Room, Student Center. Sponsored by the Student Activities Office. All club and organization presidents welcome.

GATHERING — Bible Study. 7:30 p.m. Lutheran Campus Ministry. 247 Haines St. (behind Russell dorms).

MEETING — Growth Group. Noon. RASA room, Daugherty Hall. Sponsored by the Returning Adult Student Association. Free and open to all adult students (over 25).

MEETING — Women's Coordinating Council. 3 p.m. to 5 p.m. United Campus Ministry. 20 Orchard Rd. For concerned and interested women.

MEETING — Equestrian Club. 6 p.m. Kirkwood Room, Student Center.

...And

FILM — "Used Cars." 7:15 p.m. and 9:25 p.m. Saturday and Sunday at 1 p.m. Castle Mall King.

FILM — "Urban Cowboy." 7:15 p.m. and 9:25 p.m. Saturday and Sunday at 1 p.m. Castle Mall Queen.

FILM — "The Blue Lagoon." 7:10 p.m. and 9 p.m. Chestnut Hill I.

FILM — "Close Encounters of the Third Kind, Special Edition." 7 p.m. and 9:20 p.m. Chestnut Hill II.

FILM — "Gone With The Wind." Friday, 7:30 p.m. and Saturday, 2 p.m. and 7:30 p.m. State Theatre.

FILM — "Dr. Zhivago." Sunday, 2 p.m. and 7:30 p.m. Monday and Tuesday, 7:30 p.m. State Theater.

FILM — "Rocky Horror Picture Show." Saturday at midnight, State Theatre.

FILM — "Honeysuckle Rose." 7:15 p.m. and 9:35 p.m. Triangle Mall I.

FILM — "Bronco Billy." 7:15 p.m. and 9:25 p.m. Triangle Mall II.

EXHIBITION — "Portraits and Satire." By Sidney Chafetz. Through Oct. 3. Student Center gallery.

EXHIBITION — "Contemporary Embroidery." Through Oct. 7. Clayton Hall.

NOTICE — Postponement — "Mr. Black Magic." Children's program. To Oct. 19.

NOTICE — All American Studies majors please contact the AMS Office, 317 KOF, to leave your campus address.

Retrospect

compiled from dispatches

Iran postpones hostage decision

The decision concerning the fate of the 52 American hostages was again postponed last week by the Iranian government, reported the Associated Press (AP).

The Majlis, Iran's Parliament,

voted to appoint a special committee to decide what would be done with the hostages.

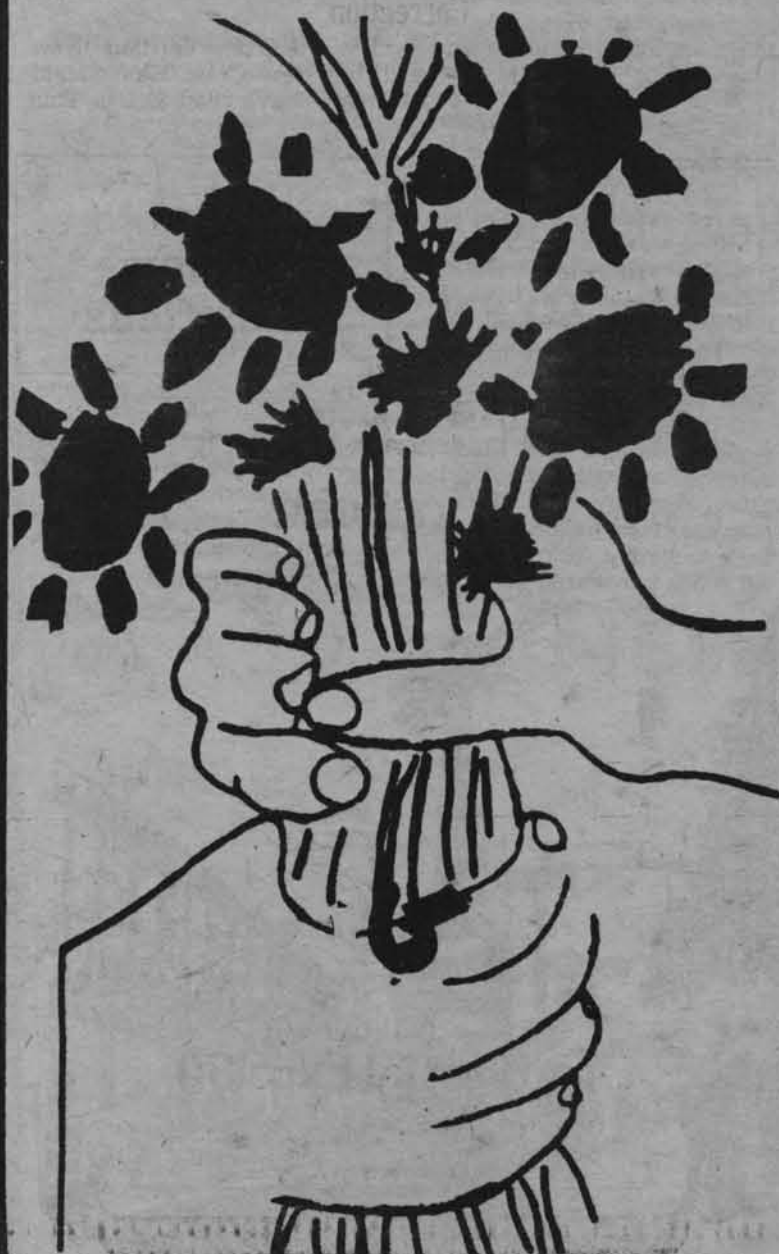
President Carter declared in Atlanta that "We have no prospect at this time of an early resolution" of the hostage situation, now in its 320th day AP said.

Councilman Schwartz found guilty

Philadelphia City Council member George X. Schwartz was found guilty by a federal jury on Tuesday of violating racketeering laws and conspiring to commit extortion, the Philadelphia Inquirer reported.

Schwartz could serve up to 40 years for the two counts, which grew out of the Abscam investigation.

Another City Council member, Harry P. Jonnoiti, was found guilty of one count of bribery by the same jury, according to the Inquirer.



LAST DAY! EXHIBITION AND SALE OF FINE ART PRINTS



featuring the works of Chagall, Dali, Matisse, Breughel, Cezanne, Van Gogh, Homer, Klee, Monet, Magritte, Picasso, Miro, Bosch, Renoir, Toulouse-Lautrec, Wyeth, Rockwell, Gauguin, Rembrandt, and many, many more.

ONLY!

PRICES

LARGE PRINTS

\$3.00 ea. **3** for **\$7.00**

SMALL PRINTS

\$1.50 ea. **3** for **\$4.00**

SPECIAL FEATURE:

M.C. ESCHER PRINTS
ROSAMOND PRINTS
ROCKWELL PRINTS
ASSORTED COLOR MATS

Date: Mon., Sept. 15th-Fri. Sept. 19th
Time: 9 a.m.-5 p.m.
Place: Rodney Room (Student Center)

Over 1200 different prints

editorial

Keep the door open

The Faculty Senate student life committee struck a hopeful note for student rights and student-faculty cooperation this week in its decision regarding the Student Program Association's showing of X-rated films on campus. It is difficult to walk the fence between "responsible attitude" and "freedom of speech," but the committee recognized this and succeeded.

First and foremost, the rights regarding the selection of films by the SPA have been upheld. The campus film series, which has been called one of the finest in the country, is chosen, run and paid for by students. For the faculty or administration to make a blanket censorship of the film choices would have been more detrimental to the campus than one or two X-rated films a semester.

That the controversy should have reached this point, however, is not a good sign. The debate over whether "Misty Beethoven" was "softcore" or "hardcore" sexuality has not yet been resolved. The complaints that were received by the administration, though, came from people who had not seen the movie, who objected to any X-rated film being shown. According to SPA, no one who attended the film complained.

The committee recognized the showing as an isolated occurrence and will say so to the full Senate next month. Their other recommendation, to appoint a faculty member who will have a vote on the SPA Films Committee, is a compromise move that we hope the SPA will accept. One vote out of over twenty is not an unreasonable demand, and the member will be chosen by the SPA and Senate committee together.

Our Man Hoppe

by Arthur Hoppe

Bank robbery

My wife, Glynda, and I deduced the other day to have lamb chops for dinner. So we went down to the bank to take out a loan.

Actually, we didn't simply go down to the bank to take out a loan. No one does that anymore. First, I got a haircut, a shoeshine and had my best suit pressed. Glynda had her hair done and removed the family zircons from under the mattress.

"You look like a million 1967 dollars," I told her as we hailed a cab a block from the bank so that we might arrive in style.

Our entry was grand enough for a Banker to greet us personally. "And what can we do for you today?" he asked suspiciously, folding his arms and shaking his head negatively.

"We wish to open a 5-1/4 percent savings account," I said grandly.

"You want to put money into our bank?" he cried incredulously, pumping my hand as though he were on the verge of striking oil. "Wait till I find a deposit slip. I know I saw one around here somewhere only last week."

Once we had successfully deposited \$10 in our new joint account, I broached the subject of a \$100 loan. "A what?" said the Banker, blanching. "You know what we bankers always say: 'Neither a borrower, nor a lender be; / For loan oft loses both itself and friend, / And borrowing dulls the edge of husbandry.'"

"How long have you bankers always been saying that?" asked Glynda.

"Since the credit crunch," said the Banker. "Well, if you aren't taking any money in and you aren't giving any out," I said, "do you just sit around all day on your assets? It's a good thing we don't need your lousy hundred bucks."

"Just a minute," said the Banker. "While we obviously can't loan money to people who need it because they're poor credit risks, if you're absolutely sure you don't need the money, we might make you a loan at only 18 ... (Ding! A bell went off.) ... and a half percent. (Ding!) Make that 19. (Ding!) And a half."

"Do we look like the kind of people who need money?" I demanded with dignity.

"The (Ding!) 20 percent loan is yours," said the Banker. "Just sign here. (Ding!) Quick!"

We might have had lamb chops for dinner after all had I not dropped the pen on the floor. By the time I picked it up, (Ding! Ding! Ding! Ding!) our first payment, according to the interest table, would be \$112.

"That's \$2 more than we would have in the world," blurted out Glynda without thinking. "Wherever would we get the money we'd need to pay off our debt?"

"Not here, you deadbeats," said the Banker. "If there's one thing we bankers can't tolerate, it's your poor credit risks."

(Copyright Chronicle Publishing Co. 1980)

readers respond

Insecurity editorial gave false blanket statements

To the editor:

In regards to "An Insecurity Blanket," the editorial in the Sept. 16 Review, your writer was inaccurate concerning a few facts. Whereas all University Police officers have the authority to ticket vehicles for illegal parking on this campus, that duty is specifically set aside for traffic officers, of which I am one. Ninety percent of all tickets, particularly at night when I and two other traffic officers are on duty, are written by us, not the other patrol officers or student aides.

The patrolmen (constables) that you mentioned concern themselves with patrolling this campus. However, they are understaf-

fed and cannot possibly be everywhere at once. This is a problem many police forces, whether university or municipal, face in preventing and responding to crime. The University Police Department is dealing with campus crime as best it can and is able to respond to complaints anywhere on campus in a matter of minutes.

You may argue that I am just making excuses for my bosses, but University officers dealing with criminal activities are Newark special constables empowered to arrest and detain suspects. All of these officers spend ten weeks at the State Police academy in Dover or the

Wilmington Police academy, receiving the same training as every other police officer in this state.

Student aides do not write tickets or tow cars; their responsibility is to provide security for campus events and University buildings. Whereas I am not a sworn officer and have only limited police powers, I, my fellow

traffic officers and student aides do cover the campus on patrol, in addition to the regular patrolmen. Since the beginning of the semester several possible crimes have been reported by traffic officers and student aides to our superiors.

As for The Review's editorial, once again our student newspaper has printed a

poorly-researched article. Having recently been a student and at one time a writer and editor for the Review, I can understand the pressures of deadline night when editors are thinking of what to editorialize in the upcoming issue.

If The Review really wants to find out about the University Police department and its

(Continued to page 7)

Police clarifications

To The Editor:

I'm writing this in rebuttal to the editorial in the Sept. 16 Review in reference to the supposed inefficiencies of the University Police Department (Security).

I'm not writing this as an attack against the lack of investigation and journalistic responsibility with which (sic) the editorial was written, but I would like to help

clarify the editorial staff on a few points.

During the night shift you speak of, the only ticketing done is for safety violations such as vehicles parked in fire lanes, a practice which could endanger the life or safety of any student on campus. As for Security's monetary (sic) gains due to their ticketing there is none. All funds generated go to the

university's general fund. But possibly if these funds did return to the department they could be put to use to increase the budget for night-time patrol (sic) officers. A funding increase that the University has not seen fit to give even though the enrollment of the students that the department must protect has increased significantly (sic).

(Continued to page 7)

letters welcome

The Review welcomes and encourages letters from students, faculty and members of the administration. All letters should be typed on a 60-space line and addressed to: The Review, B-1 Student Center.

Although The Review will honor all requests for anonymity names and addresses must accompany all letters for identification purposes.

The Review

Vol. 10, No. 5

Newark, DE

Friday, Sept. 19, 1980

John Chambliss
Managing EditorGary Cahill
Executive Editor

News Editors

Features Editor

Sports Editor

Photo Editor

Copy Editor

Assistant Features Editor

Assistant Advertising Director

Assistant Photo Editor

Art Director

Dave Palombi
EditorKaren M. Kelso
Associate Editor

Janine Jaquet, Janet Perrella

Michele Robbins, Barbara Rowland

Donna Brown, Jon Feigen, Karen Stout

Neal Williamson, Ted Caddell, Carolyn Peter

Paula Webber, Clara Collins

Rich Fife, Terry Bialas

Kim Kendall, Karen Lewis

Bob Jump
Business ManagerLisa Schwartz
Advertising Director

... THEN, IN ADDITION TO THE ANNUAL AND MONTHLY DUES, THERE'LL BE YOUR ORGANIZING DUES, YOUR ASSESSMENTS FOR THE STRIKE FUND, THE MEDICAL AND HOSPITALIZATION FUND, UNION OFFICERS' SALARIES, GENERAL OPERATING EXPENSES, THE ANNUAL PICNIC...

Published twice weekly during the academic year and once weekly during Winter Session by the student body of the University of Delaware, Newark, Delaware 19711.
Editorial and business offices at Suite 811 Student Center. Phone 738-2771, 738-2772, 738-2774. Business hours 10 a.m. to 3 p.m. Monday through Friday.

readers respond

Can't take a joke

To the Editor:

One doesn't expect much from a college newspaper but I was disappointed in the lack of intelligence exhibited by Donna Brown's editorial comments about nuclear power. She began her editorial by taking seriously a joke I made about supporting nuclear power because Jane Fonda is against it. She con-

tinued to exhibit her unbalanced perceptions in the rest of her editorial.

Unlike Donna, I do not climb the walls when I hear the word radiation and I do not immediately think of Hiroshima when I hear the words "nuclear power." Instead I think of freedom from Arab oil blackmail, and freedom from the pollution

and environmental damage that would result if coal were to be used as fuel. Of course if solar energy is ever developed so that it is a viable alternative to nuclear power, I would say by all means, cover the earth with solar panels. The problem is we need energy independence now.

Craig Lustgarten (BE82)

...clarifications

(Continued from page 6)

As for putting a "secretarial worker" on the desk, your editorial speaks in utter idiocy. The person who handles the security desk is totally responsible (sic) for all emergencies on campus. Perhaps you should come visit the security office when a fire alarm is pulled; besides dispatching officers to the scene, the desk officer

must answer calls from students who don't wish to leave their rooms unless they know there is a fire. At the same time they must deal with persons playing with elevator intercoms, complaining about bus schedules, calling to find friends' phone numbers, and somewhere in there deal with criminal complaints.

Possibly if your editorials

were written with a constructive nature they could help the University Police Department, by asking students not to tax the manpower of the department with nonessential items, and asking the university to allocate more funds so that the functions of a police department could be better provided (sic).

Brian Carbaugh (EG82)

...blanket statements

(Continued from page 6)

patrol and ticketing policies, I welcome any Review editor or writer to check with my superiors to see if they can ride with me and other officers on patrol some night. I offered such an opportunity to

one of your editors last year; maybe if The Review had taken me up on my offer then, you may not have made the errors that appeared in most of "An Insecurity Blanket."

Mark S. Ellis

Editor's Note: The Review received all information in the editorial from a University Police constable and stands by the editorial.

U.S. OPTICAL

discount eyeglasses

ADDITIONAL 10% discount for all students and faculty with this coupon on purchase of complete pair of eye glasses

2 LOCATIONS

NEWARK MINI-MALL TRI-STATE MALL
58 E. MAIN ST. 1-95 & NAAMANS RD.
NEWARK, DEL. CLAYMONT, DEL.
(302) 368-8955 (302) 798-0638

September Special

2 Haircuts for the

Price of One

Men \$10

Women \$12

with Kathy, Beth,
& Chris



Good until Oct. 4th
with this coupon &
Student I.D.

HOURS:

Monday-Wednesday

9 a.m.-12 a.m.

Thursday-Sunday

9 a.m.-1 a.m.

PARK DELI

259 ELKTON ROAD
NEWARK, DEL.

368-0149

FREE Delivery Service
starting at 5:30 p.m.
in City of Newark

NEW

SUBS

	Large	Small
Regular	2.30	1.90
Special	2.65	2.25
Italian	2.65	2.25
Ham	2.90	2.30
Tuna	2.70	2.30
Roast Beef	3.30	2.80
Turkey	3.15	2.55
Corned Beef	3.00	2.30
Bacon	2.75	xx
Hamburger	3.00	xx
Cheeseburger	3.15	xx
Cheese	2.30	1.90
Meatball Sub	2.60	2.30
Shrimp Sub	3.55	

STEAKS

	Large	Small
Plain	2.50	2.00
Cheese	2.60	2.15
Pizza	2.80	2.30
Dbl. St	4.45	3.35
Dbl. Cheese	4.55	3.45
Steak & Egg	3.35	

EXTRA

Lettuce and/or Tom.	.25
Mushroom	.60
French Fries	.60
Onion Rings	.75
Hamburgers	1.15
Cheeseburgers	1.25
Pizza Burgers	1.35
Dbl. Hamburger	1.55
Dbl. Cheeseburger	1.65

BAR-B-QUE CHICKEN & RIBS

PIZZA

Cheese & Tomato	3.50
Onion	3.80
Green Pepper	3.80
Sausage	4.95
Pepperoni	4.75
Meatball	4.75
Mushroom	4.75
Saus & Mushroom	5.25
Pepperoni & Mushroom	5.15
Extra Cheese	.65

PARK DELI

25¢ off coupon
Lg. Pizza or Lg. Sub only
One Coupon Per Person

Expires 9-22-80

A Coffeehouse The Ark

Every Sat. 8:30 p.m.

Collins Room of the Student Center
Free Admission and Refreshments

Sponsor: CCF

This Week's Performer:
Bill Romansky

MEET THE STUDENT
WELCOMING COMMITTEE
OF COOLEY HIGH



Cooley High



Richard Pryor is faster than

GREASED
LIGHTNING

PG

The Minority Student Pro-
gramming Advisory Board

presents

Double Feature Movie:
Cooley High and Greased
Lightning

Room 140 Smith Hall

September 24, 8:00 p.m.

Admission \$1.25

6,628 use center this year

Women's Center finds new home

By SUE CLINTON

A woman with four years of college earns less than a man with eight years of elementary schooling, according to statistics from the Department of Labor's Women's Bureau.

Although the majority of women are found in only 20 of 441 possible occupations, they account for three-fifths of the increase in the labor force over the last decade, the report also stated.

Recognizing the need for change, the Women's Center was developed last fall to help women entering, re-entering, or advancing in the work force. So far this year, 6,628 people have made use of the center's services.

"Our focus is to expand the career opportunities of women through education," said Gloria Stuber, coordinator of the center which is now located at 210 S. College Ave.

The services provided by the center include seminars, workshops and counseling in areas such as self-assessment. This fall's programs include a group seminar for financial planning, a six-week workshop series on building career skills, and a series of seminars on managerial development.

Several university faculty members will be

conducting individual sessions, such as Barbara Kelly, associate professor of the Department of Physical Education, who will speak on stress reduction.

Every Monday at noon, the center holds a brown bag lunch to give area women a chance to meet and discuss their careers. Free individual counseling is also available.

Fees for the courses, workshops, and other programs vary, with scholarships available for those with financial problems.

The center was previously located in McDowell Hall, until its relocation on May 9. It was established in the fall of 1979 after the allocation of a \$77,000 federal grant. The Women's Center, a public service outreach of the Office of Women's Affairs at the university, is open to women over 18 in New Castle County.

"The university has allocated this house for use as a women's center, and I consider that a large scale commitment to the recognition that women have been disadvantaged in the work force," said Stuber.



AVON

To Buy or Sell

Call 737-4925

Phillis M. DiBiase, Mgr.

AVON PRODUCTS, INC.
NEWARK, DE 19711

Unusual Attic Sale

Old New London

Rt. 896 North

New London, Pa.

Sept. 26 & 27

9-5 p.m.

PATIO PIZZA

"Fresh Dough Made Daily"

Subs - Steaks

Fast Delivery Service

On Campus Only

Open Mon.-Thurs. 9:30 a.m.-12 p.m.

Fri.-Sat. 9:30 a.m.-1 p.m.

175 E. Main St.

738-4742

"WHY DO THE HEATHEN RAGE?"

Psalms 2:1 and Acts 4:25

Not long ago a policeman said to the writer: "You better keep your eye on these kids, some of them will kill you." We quoted from a letter from a lady who wrote: "I know we have a lot of fine young people, but we also have some of the meanest that ever lived, all about."

From the following news items it appears these folks knew what they were talking about. A recent paper told of some young people in a car shooting others in another car. On one morning we read of a teenager killing another one with a knife! And about the day before we were treated with a story of a boy going to a closet to get a tool to do some work for his father, but instead of getting the tool he picked up a shotgun and killed his father! I think it was reported that he said he did not know why he did it!

Often in recent times we have heard of wholesale killings with the explanation: "I don't know why I did it!" The following might throw some light on the matter: Dante, in his vision and visit to hell on one occasion saw a man down there whom he knew to be alive on earth. The "Shade" explained to him that sometimes when a man got extra low down and vile and mean his soul is carried down to hell before physical death, and a demon takes possession of his body and animates it on earth until its time has run its course — a demon takes its place in a body that walks, and sleeps and drinks, and puts on clothes, and goes about lying, stealing, killing, raping, and promoting the devil's business.

Did you ever hear one ask the question: "Why don't God kill the devil?" Reckon maybe sometimes God answers back and says: "Why don't you kill him? Have I not told you to 'Resist the devil' and 'Give no place to the devil?' Have I not given you plenty of commands in My Word, pointing out circumstances and details, and the perilous results of disobedience? It appears you desire to have the devil 'abide with you always, even unto the end!'"

The writer recalls reading when a boy about a farmer shooting a boy he found up in his cherry tree. I suppose the reason I remember it so well is on account of how it frightened me — maybe not having enough scruples to keep me from doing the same thing if I was sure of getting by with it! In those days no one blamed the farmer, and no one sympathized with the boy to the extent of excusing or justifying him — he asked for it, and he got it! Time and again you can hear God Almighty speaking in His Word about as follows: "Strike crime hard, that others may hear, and fear, and no more such evil!"

True Christianity in warfare. When The Sword is drawn, The Sword of The Spirit, and used somebody is going to get hurt! If you get killed God will raise you from the dead! If you get wounded The Lord will come with "Healing in His Wings!" Sometimes The Sword of The Spirit puts a "material steel sword" in the hands of some to keep law and order, for it is not the will of God that there should be disorder and confusion here below!

P.O. BOX 405 DECATUR, GEORGIA 30031

et cetera

Grocery, restaurant, inn

Raub's varied history

By BARBARA LANDSKROENER

What do these buildings have in common: John Evans House, Motherol's General Store, Wagner's College Inn and Raub Hall?

Give up? They are one and the same.

The John Evans House is on the corner of North College Avenue and West Main Street. Built in 1800, the building housed not only the Evans family but also a general store and cabinet shop.

Remodeling at the turn of the century added a porch to the front of the building. At the same time the Motherol brothers leased the property and expanded the grocery.

"It was a grocery and dry goods store for as long as I can remember," said Leonard Lilley, a lifelong Newark resident. Associate Director of Alumni Relations Virginia Phillips remembered that "they had a little bit of everything, like a country store."

In 1912, the Evans family installed two bay windows and reopened the building as

an inn and restaurant. Wagner's College Inn enjoyed a fine reputation, and "people came from distant places in Maryland and Delaware to eat there on Sundays," director of alumni relations T. Elbert Chance said.

People who boarded at the Inn were also favorably impressed. "It was a nice quiet place," said Betty Lovett, who lived there before she married.

Atmosphere was a main attraction of the Inn. The interior was "quaint, with white tablecloths, cloth napkins and white ruffled curtains. It had a very pleasant, homey air," Mrs. Phillips said. Its souvenir matchbook boasted that it featured "original Delmarva recipes."

Despite its name, the College Inn attracted an older clientele. "In 1948 it was not where the average undergraduate would go. Students would have to suffer at the Deer Park," a former student recalled.

Mrs. Phillips likened the restaurant to an early Blue



Photo courtesy of Everett Photo
RAUB HALL as it looked circa 1940 when it housed the College Inn and restaurant and before the university purchased the 180-year-old building.

and Gold Club, adding that many faculty members ate there because of its convenient location and good food.

Meetings and social gatherings also became a regular occurrence at the Inn on weeknights. Mrs. Phillips remembered bingo parties, bowling team and camera club dinners held there.

In addition to quality food, the meals cost relatively little. "In the early 1950s you

could have a nice lunch with soup and dessert and leave a tip all for \$1," Chance said. Phillips agreed that the prices were "unbelievable."

In January of 1947, the university purchased the building from the Evans estate. It functioned as the College Inn until 1960 when it was re-christened Raub Hall - after Albert N. Raub, president of Delaware College from 1888 to 1896. Career Planning and Placement,

which now occupies the building, formerly shared it with the College of Urban Affairs.

Although the university renovated the building when it became Raub Hall, it has retained enough of its character to be recommended for historical preservation by the City of Newark's planning office and the Delaware Historical Society.

No bad for a grocery store.

Psychic: A glimpse behind the the crystal ball?

By MELANIE SCOTT

On the phone, the voice sounded just right. Husky, with the perfect touch of Slavic influence in it. My mind conjured up the classic vision of the high-cheekboned, lithe mysterious gypsy I had known so well from watching "The Wolfman" on Creature Double Feature.

"This is going to be great," I thought. I'm a firm believer in the "you never know" school of the occult. I really didn't think this lady was going to tell me anything earthshattering or predict my future accurately but, You Never Know.

When I called the reader/advisor (that's the proper term for those in the palmistry/tarot/psychic biz) I was told that if I wanted my fortune read I'd better get going NOW because psychics are busy, busy, busy.

For \$15 I was told I would get a "full life reading." For that much I figured I would get candles, incense, crystal balls - the works.

Oh, well.

I hurried over to the smallish house off Rt. 273, with a sign proclaiming \$2 SPECIAL. I found myself in a rather anonymous looking place that appeared to have been decorated by J.C. Penny - sectional furniture, chrome endtables, yellow shag carpeting. This was all quite different from the dark, candlelit room I had expected.

When the advisor made her appearance - a thirty-ish woman in a red housedress and fuzzy pink slippers - I was led into the next room, which was filled with crucifixes, Infants of Prague, and those unnaturally colored renditions of the Passion of Christ that I haven't seen since Sunday School.

First, she asked me to put \$15 in my hand and make two wishes. Then, I was to tell her one wish and keep one to myself. Since I had recently had a fight with my boyfriend I figured I'd ask for happiness in love.

She nodded and proceeded to place both my hands in her lap and tell me my fortune. This in itself was no small feat because in the diffused lighting I didn't see how she could possibly have seen the lines on my hand.

I must admit the woman didn't tell me anything that wasn't true. On at least two occasions she told me things that (rather scarily) hit the nail right on the head. However, I could see that most of the things could apply to anyone. The things I told her about myself and the very fact that I was willing to take advice from a stranger with a "Come In We're Open" sign on the door probably revealed enough

about me for her to make a pretty accurate guess about my personality and lifestyle.

Everytime she made a prediction she punctuated it by asking me "Is this not true?" On a few occasions when I told her that what she said wasn't quite true she nodded and said "Then you are not yet aware of this fact."

The regular, fortune telling part lasted about 10 minutes. She spent an additional 10 minutes answering two different phone calls. As I eavesdropped on her conversation I learned that she was supposed to meet one of her friends later. That must have been why she seemed to be rushing - so much for my spiritual health. She did keep her accent on the phone, at least.

When she returned from the phone she told me that she wasn't going to

(Continued to page 10)



Living Food

by Catherine Johnson

On Horseshoe Lane behind Peggy Cronin's
Next door to Cheap Skates

**Fine, Fancy, Fall Vegetables
& Fresh California Fruits.**

Citrus, Pears, Peaches, Melons, Grapes,
Mushrooms, Avacados & Salad Fixings

Mon., Thurs., Sat. 11-5:30

Tues., Wed., Fri. 10-5:30

737-4566

Wanted

Basic programmer/analyst with experience on project Delta and some fortran knowledge. Bit-mapping, Integer arithmetic, DISK I/O, etc., wage: 3.60 hr. Make appointments with Paul or Chris in office of Scholarships and Financial Aid at 224 Hulihan Hall or at 738-8121.

Newark Community Day



Sunday, September 21, 1980
10 a.m. to 5 p.m.
Rain Date Sun. Sept. 28, 1980
Listen to WNRK 1260 KhZ for announcement.
University of Delaware Mall

FUN FOR ALL-ALL DAY!

...fortune teller

(Continued from page 9)

lie to me, she saw something pretty awful in the palms of my hands. The reason my life hadn't been going so great recently was that I was carrying around a curse.

This curse, she explained, had been put on my head by two women and a man. This curse "was not of God" and if I didn't do something about it, I could expect to be pushing up daisies inside of three months.

Luckily, I had happened upon a genuine agent of God

just in time. She told me that her powers were given to her by God and it would be totally immoral for her to charge for any good works.

However, she did need certain materials if I wanted her help. She said she needed nine nine-foot-high candles from the famous St. Anne du Beaupray cathedral in Canada. She would go into a trance as she burned the candles and afterwards she would tell me what to do with my troubled life. The candles cost \$5 a piece.

After doing some quick multiplication I told her that I was a student and simply didn't have \$45.

"Sister, God knows you have the money," she said solemnly (she always referred to me as "sister").

I insisted and she reconsidered. If I couldn't possibly afford them, even with my life in danger, perhaps I could afford three candles.

If not three, then at least one. She looked at me and insinuated that if you can't afford 5 bucks for your own life...It was then I knew that this was one gypsy who wasn't going to give me my \$5 change.

So, \$20 shorter and not very much wiser I beat a hasty retreat, while she called out to me to come back on Thursday — still wondering how one could burn a nine foot high candle in a house where the ceiling couldn't have been more than 8 and a half feet high.

Undoubtedly, though, I still have a curse on my head. Or at least I may have one since I didn't show up with the rest of the money on Thursday.



These two TI calculators can help you handle courses in math, in science, or business. Now, and in the real world.

One real-world lesson you'll learn in school is the importance of productivity. Time you spend doing the math part of the problem is time you can't spend learning concepts.

A Texas Instruments professional calculator will help make your study time more productive. And it can also help you move into the world of a professional. A world where knowing the concept is only part of the solution. Bringing out the answer requires a working knowledge of a powerful personal calculator.

Economical TI Business Analyst-I with Statistics and advanced busi-

ness functions.

Pre-programmed with business functions for time-value of money, statistics, profit margin. And other problems you'll encounter in business school. Other capabilities include percent, squares, logs, and powers. Its 140-page book, "Keys to Money Management" (a \$4.95 value), has step-by-step instructions plus sample problems. It's an extra value with every BA-I.



The TI-55 advanced slide rule with statistics and programmability.

This capable calculator has AOS™ easy entry system, statistical functions, 10 memories, 9 levels of parenthesis, trig, powers and roots, plus programmability. Its book, "Calculator Decision Making Sourcebook" (a \$4.95 value), helps you get all the power pre-programmed into the TI-55.

See the whole line of TI calculators at your college bookstore or other retailer. *Trademark of Texas Instruments Incorporated.



Texas Instruments technology — bringing affordable electronics to your fingertips.

TEXAS INSTRUMENTS
INCORPORATED

••Hayrides••
Bonfire included
for
Celebrations of all
kinds!

20 minute drive from campus; farm in New Castle, Delaware.

Call
328-7732

For Reservations

Fall theater to begin

Newark's fall theater season commences this weekend with the Chapel Street Player's production of "Divorce Me, Darling," on Sept. 19.

The play, directed by Lucy Raymond, stars Renee O'Leary and will be performed at 8:15 p.m. on Sept. 19, 20, 26, 27 and Oct. 3 and 4 in the Playhouse at 27 N. Chapel Street. Tickets, \$4.50 for adults and \$3 for those under 18, may be purchased at the door or in advance at the Newark Shopping Center, or by calling 731-1884.

The group's next performance, on Oct. 17, will be "The Belle of Amherst," followed by "Fool's Paradise" on Nov. 7.

Classifieds

(Continued from page 12)

One bedroom apartment - Foxcroft. A/C, carpeting, walk to campus. \$240/mo + Security deposit. Call Cathy, 738-2101, 737-9439 after 5:00.

Seeking mature, friendly roommate to share Allendale apartment. Private bedroom and bathroom. Full kitchen. Rent \$127.00 Call Rich, 738-8054 / work, 738-7639 (after 5:00)

Roommate Wanted: Looking for third person for Towne Court Apartment. Call KARL or MARK. 737-7351.

TIRED OF EXTENDED HOUSING? SUBLET GREAT 1 BEDROOM APARTMENT AT LINDEN GREEN (MINUTES FROM DOWNTOWN NEWARK). CALL 737-5918 or 731-8525.

PRIVATE ROOM FOR FEMALE. ONE BLOCK TO CLASSES, TELEPHONE, CABLE TV, KITCHEN PRIVILEGES. PARKING. NO HASSLES. AVAIL. IMMEDIATE. CALL MR. SCHWEIZER AT 737-9007 or 368-9376 (leave message).

Female wishes 2 other females to share House. Private Bedroom, \$170/mo, all utilities, phone, wash/dryer incl. Call 737-1219 or 737-3526.

Volunteer readers needed immediately for blind University students. Please call Kathy Ball, Dean of Students Office at 738-2116.

Babysitter needed - occasional evenings North Wilmington Area. 658-7806.

GRADUATE COMMUTER NEEDS ROOM 1 to 2 NIGHTS PER WEEK FOR REASONABLE RATE. 302-934-9274 (day), 302-539-9436 (eve.). ASK FOR CAROL.

Housecleaner - Newark area. Every other Fri. Ref. - own trans. Call after 3 P.M.: 738-9947.

Gold Class Rings. Top dollar. See George in Room 200, Brown. 366-9276.

Female roommate to share 1/2 duplex. Walking distance to campus. \$125/month + utilities. Call 366-1094.

WANTED - people to pick up their books and money from the APO book exchange. TODAY is the last day.

Roommate to share 2 bd. rm. apt. in Paper Mill w/2 others. Rent 100.00/mth. Call Laurie 656-0930.

Need ride to NYC. Long Island or vicinity on Thursday 9/25. Will gladly share expenses. Call 738-1410.

Need someone to share expenses and driving to Houston, Texas or vicinity. Call ASAP. 475-0137. Johana

Student to sit with my children (ages 2, 6) after bedtime 2 - 3 weeknights and 2 - 3 weekend evenings per month. Transportation avail. Call 737-1787 after 6 P.M.

wanted

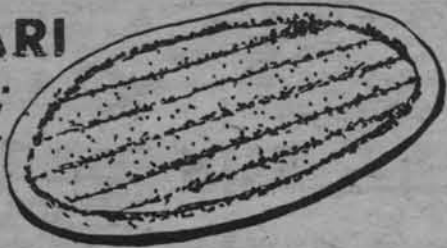
Part time Gymnastic instructor needed for OLYMPIAD GYMNASTICS CLUB 9.20 minutes from Newark). Competitive or Teaching experience helpful. Call 656-3715 for application.

EARN \$\$ AND FREE TRIP
Need campus representatives to promote our student travel programs. Contact:
THE AMERICAN STUDENT TRAVEL CENTER
151 MAIN STREET
WINSTED, CT 06098
(203) 379-7508
(800) 243-2848 Toll Free

HALLOWEEN MASKS
10% OFF SALE - 'til 9/27
Best Star Wars, etc.
Also Avail. - Makeup Access.
MAGIC FUN STORE
210 W. MARKET ST., NEWPORT, DE.
Newport Plaza Shpg. Ctr.
998-7159

BARBARI

نان بربری اعلا
با کنگد و خشکاش



The Finest Middle Eastern Bread at the Oriental Grocery Store.
Fresh Every Saturday.
174 Elkton Road, Newark. Tel: 368-2943

GAY STUDENT UNION

Friday, September 19, Delaware Gay Community Coffeehouse, 8 p.m.-12, Daugherty Hall, Games Night! and Munchies.

Sunday, September 21, Meeting, 201 Hartshorn Gym, 8 p.m., Speaker on MCC Church for Delaware.

For Info Call: 738-8066 or 737-1662.

UNIVERSITY TUTORING SERVICE

These departmental supervisors can put students in touch with qualified tutors. Undergraduate tutors are paid \$3.50 per hour; graduate tutors are paid \$5.00 per hour. The University pays one-half the cost for students receiving 25% to 50% financial aid, or the total cost for students receiving 50% or more aid. Prospective tutors should also contact these supervisors:

ACCOUNTING	Prof. A. DiAntonio	221 Purnell Hall	738-2962
AGRIC. & FOOD ECON.	Prof. R.C. Smith	234 Ag. Hall	738-2511
AGRIC. ENGINEERING	Prof. E.N. Scarborough	057 Ag. Hall	738-2468
ANIMAL SCIENCE	Prof. P.H. Sammelwitz	048 Ag. Hall	738-2525
ANTHROPOLOGY	Prof. K. Ackermann	308 Kirkbride Off. Bldg.	738-2821
ART	Prof. D.K. Teis	104 Recitation Hall	738-2244
ART HISTORY	Prof. J.S. Crawford	319 Old College	738-2865
ATHLETICS (VARSITY)	Prof. T.C. Kempinski	Del. Fieldhouse	738-2253
BIOLOGY	Ms. Helen Dennison	117 Wolf Hall	738-2281
BUSINESS ADMIN.	Ms. Marie Retz	306 Purnell Hall	738-2554
CHEMISTRY	Ms. Susan Cross	104 Brown Lab	738-2465
COMMUNICATIONS	Ms. J. Harrington	301 Kirkbride Off. Bldg.	738-8041
COMPUTER INFO. SCI.	Prof. R. Weischedel	456 Smith Hall	738-2712
ECONOMICS	Prof. H. Hutchinson	317 Purnell Hall	738-2564
EDUCATION:			
EDUC. DEVELOPMENT	Prof. W. Moody	134C Hall Building	738-2333
EDUC. STUDIES	Prof. L. Mosberg	211 Hall Building	738-2324
ENGINEERING	Prof. R.A. Dalrymple	137 DuPont Hall	738-2403
ENGLISH	Prof. L.A. Arena	401 Morris Library	738-1168
ENTOMOLOGY	Prof. P. Burbutis	205A Ag. Hall	738-2526
GEOGRAPHY	Prof. E.V. Bunske	201 Robinson Hall	738-2294
GEOLOGY	Prof. P.B. Leavens	104 Penny Hall	738-8106
HISTORY	Prof. J. Huttmacher	423 Kirkbride Off. Bldg.	738-2386
HUMAN RESOURCES:			
FOOD SCI. & NUTRITION	Prof. Dan Farkas	234 Alison Hall	738-8976
INDIVIDUAL/FAM. STUDIES	Prof. W. Maw	219B Hall Building	738-2879
TEXTILES & DESIGN	Prof. J. Van Name	238 Alison Hall	738-8714
LANGUAGES:			
FRENCH	Prof. Mary Donaldson-Evans	423 Smith Hall	738-2758
GERMAN	Prof. A. Wedel	438 Smith Hall	738-2587
ITALIAN	Prof. E. Slavov	440 Smith Hall	738-2589
LATIN-GREEK	Prof. N. Gross	439 Smith Hall	738-2749
RUSSIAN	Prof. E. Slavov	440 Smith Hall	738-2589
SPANISH	Prof. I. Dominguez	420 Smith Hall	738-2580
SWAHILI	Prof. M. Kirch	444 Smith Hall	738-2595
MARINE STUDIES	Ms. Dorothy Woods	111 Robinson Hall	738-8166
MATHEMATICS:			
ELEM. EDUC. MATH	Prof. J.A. Brown	304 Hall Building	738-2333
MATHEMATICS	Prof. R. Remage	507 Kirkbride Off. Bldg.	738-2653
STATISTICS	Prof. J. Schuenemeyer	531 Kirkbride Off. Bldg.	738-2653
MILITARY SCIENCE	Major Ronald Grandel	Mechanical Hall	738-2219
MUSIC	Prof. M. Arenson	309 Dupont Music Bldg.	738-8485
NURSING	Prof. Elizabeth Stude	305 McDowell Hall	738-1257
OCCUPATIONAL EDUCATION	Ms. Aline Schench	206 Willard Hall	738-2561
PHILOSOPHY	Ms. Mary Imperatore	24 Kent Way	738-2359
PHYSICS	Prof. John Miller	232 Sharp Lab	738-2660
PLANT SCIENCE	Prof. C.R. Curtis	147 Ag. Hall	738-2531
POLITICAL SCIENCE	Prof. R. Sylves	305 Smith Hall	738-2355
PSYCHOLOGY	Prof. B. Ackerman	228 Wolf Hall	738-2271
SOCIOLOGY	Ms. Carol Anderson	322 Smith Hall	738-2581
THEATRE	Ms. Betty Sherman	109 Mitchell Hall	738-2201
TUTORING SERVICE COOR.	Prof. Philip Flynn	205 Memorial Hall	738-2361

*I've studied
a lot of classics...*

*None was as refreshing
as this.*



CONTENTS 12 FL. OZ. • BEER

The Review Classified
B-1 Student Center
Newark, DE 19711

Classifieds

Send your ad to us with
payment. Rates: \$1.00 for first
10 words, then 5¢ a word.

announcements

ATTENTION all organization leaders!
SCOPE V on Sunday, Sept. 21 is for you - be there!

TODAY is the last day to pick up your money
or books from the APO BOOK EXCHANGE.

available

TYPING SERVICES: Term Papers, Theses,
Resumes, Advertising, Programs, and
General Correspondence, including Letter
Composition. Donna Carver, 737-4617

NOTARY SERVICES: Donna Carver, 737-4617

Typist: Experienced, professional. Excellent spelling and punctuation. IBM Selectric. 366-1452.

Experienced typist - Call 368-0196 anytime. IBM Selectric. Competitive prices.

TYPING, SELECTRIC MACHINE, CALL ANNETTE, 834-1824, ANYTIME

Will type manuscripts, reports, etc. \$1.50 a type written page. For further information please call 737-1074 and for Regina or Steve.

for sale

2 Hardtops - For MGB & MG Midget. Call 994-3030 or 301-392-3321

STEREO EQUIPMENT - MOST MAJOR BRANDS AT LOW, discount prices. Special this week DUAL 506-35 Semi-automatic Turntable with Ultra Low Mass Tonearm and Ortofon Cartridge. \$169. Call Keith at 366-9241.

Bike for Sale. Top quality parts. 28 pounds. 368-1996. Lou. \$170

RARE ALBUMS. 155 Rodney C. Discontinued and Collector's items.

20 GALLON AQUARIUM, STAND, UNDERGRAVEL FILTER, COMPLETE SET-UP. SACRIFICE AT \$75.00. 731-8520.

Used portable manual typewriter - Olivetta Lettura 31. Excellent condition. \$50. Call Pam 738-9021.

Bunk Beds Excellent Condition. \$25.00. Call Mary Lou or Jane. 738-8273.

Sony Compact & GE Tuner & Panasonic Speakers - \$80. ERC receiver - \$5.00. Guitar amps: 1 for \$35, 1 for \$20. Call 738-9973.

Altec speakers, Kenwood Amp and Tuner. Call Mike 738-9894.

BEER SIGNS, NICE, LIGHTED CLOCKS, LAMPS, MIRRORS, ETC. 998-6274

Underwood Manual Portable Typewriter - Good Condition - \$35. See Joe, 0012 Sharp.

lost and found

Lost: Black Tomcat w/Brown Flea Collar. Reward. 366-1659 or 738-4705.

Lost: Gold, Add-A-Bead necklace. (On 9/12/80 P.M.) Location - Between New Castle and Gilbert B. Reward offered. Contact: Sharon 221 New Castle.

LOST towel, pants, keys from Rodney shower Please return - I need those keys! No questions asked.

LOST: Swiss Army knife on Monday 9/15 probably on grass between Smith and Kirkbride. Sentimental value. If found, call Sarah 737-6821. Reward offered.

LOST: Glasses, Brown Frames. Lost along 896, near fieldhouse. Reward. Call 738-1845.

FOUND: Ring. call 738-1628.

LOST: Set of 9 or 10 keys on silver keychain. If found, please call Beth. 737-5414.

personals

Get Psyched to BEAT TEMPLE at PHI TAU TONIGHT at 9:00.

KAPPA ALPHA HAPPY HOUR, FRIDAY FROM 4-7 P.M., FREE!!!

Happy Hour at Lambda Chi Alpha, today 4-7 163 W. Main St. Jan Stewart thinks we should have had it some other time, but what does he know? Come show him he's wrong.

Party At Theta-Chi Friday, Sept. 19, Live Music. 9-?

All Student Leaders - come SCOPEing with us on Sunday, Sept. 21. 1:30 P.M. in Bacchus.

HEY FRESHMEN GIRLS - Tryouts for the FRESHMEN CHEERLEADING SQUAD will be held Sept. 22-25. 7 P.M. - 9 P.M. AT CARPENTER SPORTS BUILDING.

Happy Birthday, Kelli Bizoe! Have a great 20th. Love, Gail.

Dorothy - Thanks for your thank-you note. It was so thoughtful! Stop by sometime!

Dear FY: Your statement was misdirected but don't worry, I've done that before also. Bob

Are you tired of being ripped off? \$10. haircut, now \$5.00. We cut, wet, and dryer-style your hair. Scissors Palace Hair Stylist for Men. 16 Academy St. Next to Mr. Pizza. 368-1306.

Send WAYNE HARDIN to IRAN and come to PHI TAU's BEAT TEMPLE PARTY, FRIDAY.

Help! ANNA, LISA, MONA or MONA LISA is gone. Do you know where it is? Bob

HEY FRESHMEN GIRLS - Try-outs for the FRESHMEN CHEERLEADING SQUAD will be held Sept. 22-25. 7 P.M. - 9 P.M. AT CARPENTER SPORTS BUILDING.

SCOPE 'cause we want to be better.

YOU can make a difference! Need an opportunity to get REAL Counseling Experience? Especially for Human Services Majors! Join the AVP to provide a one-on-one experience for a few hours a week. Formal training provided and expenses reimbursed. Call Phyllis Laufer at 654-1261

SKIN DIVING: INSTRUCTION IN SKIN DIVING WILL BE GIVEN THRU DIVERSITY ON MONDAY EVENINGS, BEGINNING SEPT. 29 AT 7 P.M. FOR MORE INFORMATION CONTACT DIVERSITY, ROOM 232 STUDENT CENTER.

Dan Skaying, Although you're the most obnoxious person we know as well as the most perverted, all your friends would like to wish the happiest 20th birthday to the BIGGEST guy we know. Celebrate with a case of Strohs, Big Zak. BMOK, FAT MAN, SNIF-FER, ANGEL, TIM, JOE, AL

Doc Teari Lives! Scotty-o Disco Lady Returns. The minister is out and the man from Glad is mass mingling.

Attention: Girls interested in Water Ballet and Synchronized Swimming! There will be an organizational Meeting for the "WOMENS AQUATIC CLUB" MONDAY, SEPT. 22 at 4 P.M. in the Collins Rm. in the Student Center. Everyone welcome, no experience necessary.

Russ McLemore will give a Lecture entitled "How to stay at college for an extended period of time and enjoy it" 25.00 hrs. Pencader 13, 9/27/80

Tigerrrr...you were savage last weekend! Who loves you, baby? Yer Space Cadet

Debbie Schilero - Rumour has it that you still attend the University of Delaware. Well, I don't believe it, so prove it and call your dear, darling sister...

Punker - Here's your personal, so now you can leave me alone! But not too much alone...I hope this brightens your day and if it doesn't scrape your face along the pavement! Thank you - love - Linda

Bobbie, Come down instead of sending the bear next time. D.D.

Sheryl, "Happy 20th Birthday, you pencil-neck!" We'll have to show you how to do some real celebrating! Love, Anne, Joyce, and Leslie

IF YOU SEE MARY-BETH BUCKLEY TODAY, PRETEND IT'S NOT HER BIRTHDAY. UNTIL SHE JUMPS UP AND DOWN AND INSISTS ON TELLING YOU!! (HAPPY BIRTHDAY, MB! LOVE, LAURIE)

Mary-Beth - Your birthday's today?! Well, I'm glad I type the personals so that I knew in time to put this in. Happy birthday from me and from Chris (in spirit)

Linda P., Hasn't been long, but looking forward to the day when this personal can be much longer. Happy 19th birthday. Love, Kevin.

Gail DiNurscia, Happy 20th Birthday. Get in touch. Diane

"Hey J" Sending you a late birthday wish is like an old hen's first fling - better laid than never! Happy Birthday. ??

Lisa - to a wonderful roommate and the terrific year ahead of us. Love, Diane

Don't Forget to pick up your money or books from the APO BOOK EXCHANGE. Today is the last day.

GIFT Idea. Treasures of the Sea. Real Sand dollars, shells, seahorses, etc. electroplated in 24 kt. gold. Start at \$6.00. Info to order, call: 738-1067.

Daria Campbell - Her's hoping your birthday is "JUST DUCKY"!! Love, Sue and Jensen

McCreary, How ya don't? We hope that you're happy at the U. of D. & we're glad that we've gotten to be good friends. You're great! Don't T.V. on a long black schlong. Shet up! Now that you have mega gators, you're such a prep. Take Care. The Vamp & the Wilson

Bandana Bill, What more can I say except that I am sincerely sorry. Hope that you will forgive & forget. So much for marginal utilities.

To Lou and Dave, My favorite lunch partners. (So it's not exactly a steak dinner). Love, J.

KAC, PIO, LIZARD, DEBS, LASH, Welcome Back - Central again! AMPHIBIAN

Dear Roommate (Clint's father) - Here it is - a personal!! Thanks for a great summer & all that garbage. I love you. "Beety-beets."

AOTT: What's red with white letters and furry all over? How much are the letters OATT worth to you? RSVP - The Greeks

KICK-OFF THE TEMPLE WEEKEND THIS FRIDAY AT K.A. FREE REFRESHMENTS FROM 4-7 P.M.

DANCE to the Music of Traveller at PHI KAPPA TAU, Friday night, 9:00

Lambda Chi's Happy Hour today Plenty of suds and the best time around. Just ask Rocky (The Stub) Antoni. He might not remember, though.

T. - Happy 21st Birthday. Hope this is your best year yet. Thanks for all the help. Te Quiero! "Little Sis"

Wassa matter, you deaf? I said there's a HAPPY HOUR at Lambda Chi today at 4! Bring your pants on over.

HEY FRESHMEN GIRLS - TRY-outs for the FRESHMEN CHEERLEADING SQUAD will be held Sept. 22-25. 7 P.M. - 9 P.M. AT CARPENTER SPORTS BUILDING.

Peck: Now that the grapes are grabbed and the leaves are raked, Don't hesitate with THE BIG CIGAR.

Charlie & Gary - Monday 7:00. Bring the wine! RSVP 405 WEST.

JOHN BROWN - Next time you decide to spend the night, kindly give three days notice - so we can lower the loft!

To Jay the RA (Hall Director): Thanks for your concern but I'm not psychotic yet. Sorry if I worried you. Signed, Son of (Sam Reeves?) P.S. I have a tank in my room. Say good-bye to the library.

TOM HALL - HARRINGTON: YOU MAKE ME FEEL GOOD ALL UNDER!!!! Carol Vandergrift is our R.A. - what's your excuse? - Only kidding - it's going to be a great year - get ready!

Brownie - Starting at DKEF and going to OC, MD, the Poconos, Vermont, FLA, NY, Phila, NJ and all the little places in between where we shared our love and have our memories. For now, though, because I know that you are there anytime I need you, I could sit here forever and enjoy this high. Thank you for the last 2 years. Love, Shelly.

FIRST RATE for the FIRST STATE, BLUE HEN FOOTBALL AND PHI TAU PARTIES.

UNWIND FOR THE WEEKEND AT KAPPA ALPHA, FRIDAY FROM 4-7 P.M. FREE MUSIC AND REFRESHMENTS.

SINGING TELEGRAMS will be delivered starting Monday Sept. 22. We deliver: any song, any feeling, anywhere. Special Student rate!!! All telegrams must be booked two days in advance! Reservations can be made by calling Mark at 731-1320. SEND-A-SONG

Break the Fast after your Kippur Services at temple Beth El.

TRY IT, YOU'LL LIKE! PUBLIC SPEAKING IS AN ART THAT YOU WILL ENJOY AND IT'S A GREAT EDGE IN THE PRESENT JOB MARKET. LEARN A SKILL THAT CAN GET YOU A JOB IN ANY CAREER. CONTACT THE DEPARTMENT OF COMMUNICATIONS AT X0041 FOR MORE INFORMATION.

HAPPY HOUR - today at Alpha Tau Omega, 4-7, refreshments.

Dave: Happy Birthday to my shining star! (Aw...shucks.) Love Always, Me.

Dave Dude: Nine months ago today...the snow may not still be on the ground; but the fire is still in my heart...Love, Sue Dude

YO, DAVE FORD! Hey, dude, hear it's your B-day on Sunday. Have a happy & always enjoy - it's your last year on Sugar Mountain, make it the VERY BEST. Love, P'zer. P.S. You're required to do 19 B's...deadline 9/21/80, 12:00 P.M. PENALTIES ENFORCED!!!

HEY FRESHMEN GIRLS - try-outs for the FRESHMEN CHEERLEADING SQUAD will be held Sept. 22-25. 7 P.M.-9 P.M. AT CARPENTER SPORTS BUILDING.

Sue, Thanks for everything. The next three will be as great as we thought. Much fun ahead. Happy 15. Love always, BRAT.

Schaffe, Happy 15! Somehow I know it's been great for you as it has for me. Here's to a fantastic year! Lots of Love, Roph

Hillel Sukkot building party is this Sunday at 4 p.m. Please come and join the FUN!

Robar, You're finally 20, so let's live it up. Happy Birthday - Suey

Theresa and Jenny, Did you get back from Sigma Zu alright, ya better watch out for those guys that bite, So keep us in sight on Saturday night, three guys from Gilbert

Hey everybody! It's Karyn Thompson's birthday on Sunday - Wish her a happy one. L & K - the whole gang.

PRSSA meeting Monday 9/22. Rm. 336. Kirkbride office Bldg. 4 p.m.

Earth to space, are you there??

NAL, YOU NEED THE COMBINATION NO's 9, 19, 22 TO UNLOCK THE DOORS TO LIFE'S MOST JOYOUS EXPERIENCES. HAPPY B-DAY! MFON

HEY FRESHMEN GIRLS - Try-outs for the FRESHMEN CHEERLEADING SQUAD will be held Sept. 22-25. 7 P.M. - 9 P.M. AT CARPENTER SPORTS BUILDING.

Dave, Thanks for all the good times we have shared. This past year has been wonderful, I'll never forget a minute of it. A big "thank you" and remember I love you! Love, your Cocconut

Well, Lisa, one year down. Many more to come! HAPPY ANNIVERSARY! LOVE, SCOTT

HAPPY HOUR - Today at Alpha Tau Omega, 4-7, refreshments.

Watch the Blue Hens BLITZ TEMPLE but first get BLITZED at PHI TAU on Friday.

Happy Hour at Lambda Chi Alpha today at 4. Dancing starts about 7. Will Kelly Stauffer?

Party at Theta Chi, Friday, Sept. 19. LIVE MUSIC. 9-?

rent/sublet

Roommate needed. You will be given your own room in a house 1/2 block from Main St. and 1/2 block from Central campus. If interested, stop by 28 Academy St. or call 731-9874.

Apt. Available - Immediate occupancy - Towne Court - 1 Bdrm. - 8 month lease - Call 737-9594.

MALE ROOMMATE WANTED TO SHARE 1/2 OF 1 BR. APT. IN TOWNE COURT. CALL 368-7179 or 368-1402.

Roommate needed for house rented by Students 1/2 block from Main St., 1/2 block from Central Campus. Person will have own bedroom. Stop by at 28 Academy St. or call 731-9874 anytime.

(Continued to page 11)

An After Game Celebration: Disco
w/Doug Henderson - WDAS Radio
Rodney Room, Student Center
September 27 - 11:00 p.m.-2:00 a.m.
\$2.00 advance, \$2.50 at the door
Morgan Students half-price w/ID
Sponsored by MSPAB
Tickets available now at Minority Center

Lauren's
Sally Wallace Bride Shop

199 So. Chapel St.
across from the Solar House
The busy college bride-to-be's complete
bridal service center.
The shuttle bus drops you off at our doorstep and we
do the rest! From invitations - to gowns -
through the reception -
And all at such reasonable prices.
Call for an appointment
Today
366-0594
and bring this ad for
10% discount on your bridal gown
when your bridesmaids order their gowns.



...Spikers set for season

(Continued from page 16)

Carolyn Mendala, a two year starter, will join Johnson as an outside hitter.

It was in the setter position that Viera thought she'd have the most experience with returning starters Pam Chorely and Kris Maley. Between them they have five years of varsity experience. However a knee injury to three year starter Maley could keep her out of action until mid-season.

"I'd rather wait now and have her at the end of the season," said Viera. "We're not pushing her. She's been weight training and almost has all of the strength back in the knee but she isn't 100 percent."

Junior Colleen Sullivan could see some action as Maley's back-up.

Other players who could help the Hens during the season are: setter Kathy Gregg, middle hitter Kim Grinnell, and outside hitters Debbie Blair and Wendy Welsh.

Grinnell is a sophomore transfer student and according to Viera is "looking good as a middle blocker and across the front line."

In addition to the returning players, Viera is impressed with her incoming freshmen. "We have a lot of promising freshmen but none will be playing varsity because of the talent that's ahead of them. But they should provide us with a solid background in the future."

One difference in this year's squad as compared to last, is the team's defense. "Our defense is much improved and we are blocking extremely well," said Viera.

The spiker's schedule is a tough one. Included in it are several tournaments in which the Hens are either the only Division II team or are one of a few.

An annual highlight of the

Hen season is the Delaware Invitational Tournament. The event draws some of the best teams in the area. This season the tournament will be held on Oct. 17-18.

"We must beat all the Division II teams that we play in order to qualify for regionals," said Viera. "Everyone will be out to beat us because of what we did last

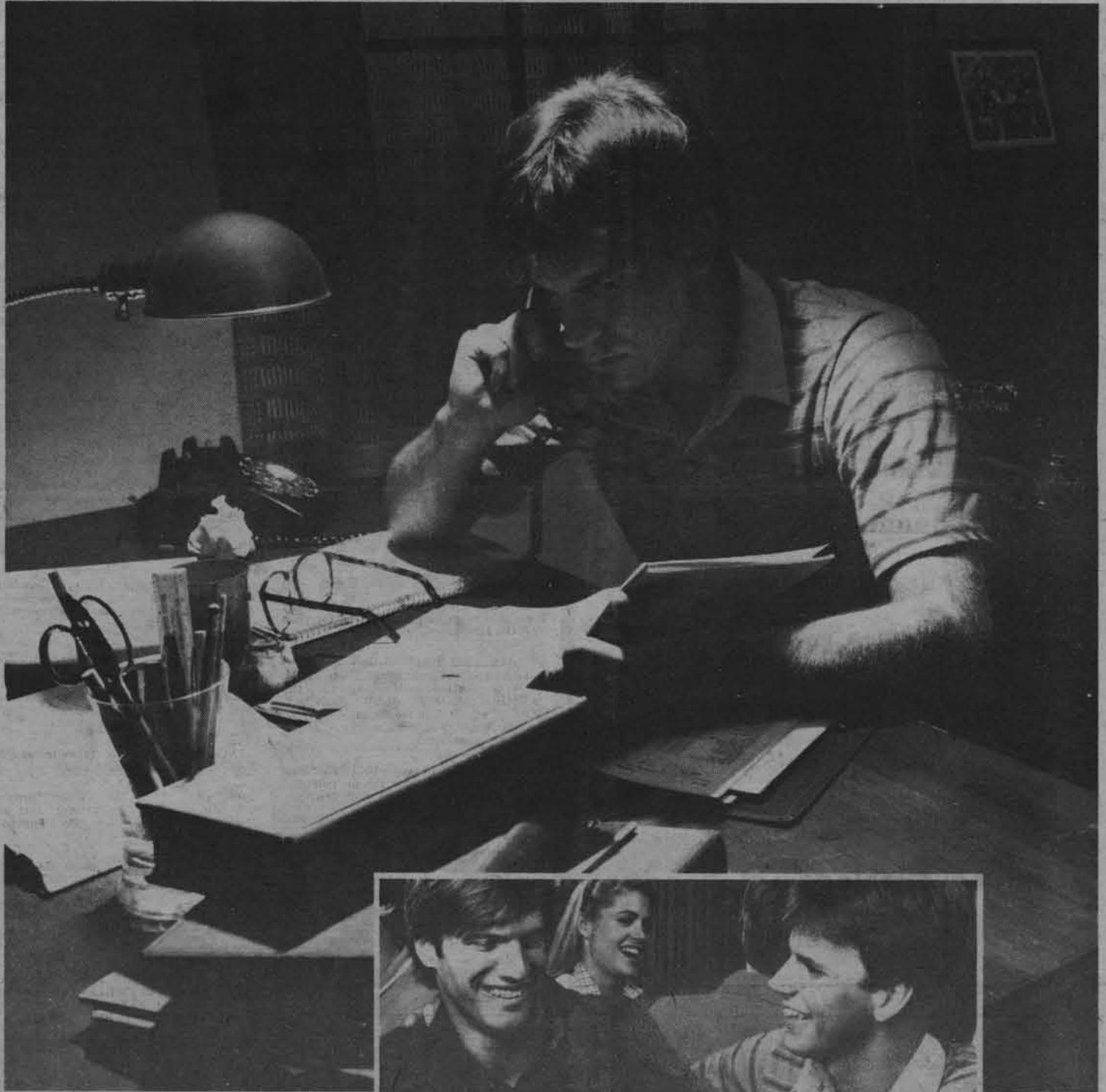
year. It will be a feather in their caps if they do."

Viera does not seem at all doubtful about her team's ability to match last season's performance.

"We have the potential to make it to regionals and the girls have already set that as a goal. This season will be a tough one. We must be prepared for every match."

The Office of Graduate Studies will conduct an open hearing to consider a proposal for establishing a new graduate degree program leading to the Ed. D. Degree (Doctor of Education) in educational leadership. The hearing will be held at 4:00 p.m. on Monday, September 22, 1980 in Room 110 Memorial Hall. The hearing is open to members of the University Community.

When you need some notes at 3:00 a.m., you find out who your friends are.



You left the notes for chapter 6 in the library. A sure sign that tomorrow's test will be heavy with questions from chapter 6. Someone you know is about to get a phone call. He's not going to like it, but he's going to come through. When this is over, do something special for him. Tonight, let it be Löwenbräu.



Löwenbräu. Here's to good friends.

© 1980 Beer brewed in U.S.A. by Miller Brewing Company, Milwaukee, Wisconsin

Tired of
Cramped Quarters
in
Extended Housing?

Rooms Available

Double rooms include
semi-private baths,
cable television hook-
up, phone jacks, kitchen
and laundry privileges,
parking available.
Comparable U of D
dorm rates. Financial
Aid applicable. Call
now.

453-1837

737-7375

Scissor haircutting for all men's and ladies' styles. All work Special for the Individual.

\$4

Burchard's Barber Shop

154 E. Main St.

366-9628

8-5 p.m. Mon. to Fri., 8-4:30 Sat.

...Gridders take on Temple

(Continued from page 16)

Even with Hoffman at full strength, Scully will see plenty of action, according to Raymond.

"It's a blessing when you've got two kids like that," said Hardin. "Dutch throws the ball real well and Scully runs around and makes things happen. We'll have to be at our best to come out on top."

Temple's passing attack will likely give the Hens much to contend with as well. Although last years star quarterback, Brian Brommell has graduated to the Canadian Football League, junior Tink Murphy steps in with a lot of promise.

A lack of a rushing attack forced Murphy to put the ball in the air 35 times completing 16 last week but Hardin called

throwing that many passes a "desperate situation."

Murphy's main target will be Gerald "Sweetfeet" Lucear. Hardin considers Lucear to be "one of the finest players we've every had; an All-American candidate at split end."

The Temple running game will be handled by Kevin Duckett but fullback Bob Stark is questionable for the game due to an ankle injury. Owl offensive guard Chris Stinger is also questionable for the game.

"There's nothing like the fury of a rebounding team," warned Raymond referring to a Temple resurgence. "They have a lot of new people and a lot of good football players. They'll be a good football team and they will not play like that again," he said referring to last weeks Temple season opener.

Hardin agreed as he was surprised by his young team's performance.

"We played in a lot younger and a lot less experienced way than I expected," he said. "We are still green and our kids didn't hit anybody. I think we are capable of hitting and playing a lot tougher. If we do we could win the ballgame."

...Soccer

(Continued from page 16)

Petito centered an arcing pass to Mike Walters, who headed it into the left side of the goal.

Despite the offensive problems, the Hens were ready to jump back in the game when Elizabethtown forward Mike Fefegula (a resident of Bo, Sierre Leone) knocked in a loose ball that the Delaware defensemen could not clear. Fefegula, who also scored his team's fourth goal, presented problems for the Hen defensemen all day.

"He had us intimidated quite a bit," said Kline. "We gave him time to get settled with the ball and do his tricks."

In the second half, Delaware stalked onto the field and promptly began pecking away at the Elizabethtown defense. Two minutes into the half, Mike Walters centered the ball in front of the Elizabethtown net, where goalie Dean Glick scooped it up in front of onrushing Hen forward Charles Dielmann.

Kline commented that the defense had played "fairly well" but added that, "We did make some mistakes, a few times we backed away from the ball."

The Hens next opponent will be Franklin and Marshall on Sept. 24.

"F. and M. isn't quite as good," said Kent Arnold, "but we're going to have to play with a lot more intensity."

Jimmy Oster added, "We have a lot of work to do in practice, but it will be different next time. We'll play better."

TASTE THE BEER THAT OUTSELLS MOLSON GOLDEN IN CANADA: LABATT'S.

Good news!

Labatt's, Canada's No. 1 selling beer, is now imported to the U.S. So, now it's easier to compare the taste of our Labatt's with the brew of our friendly competitor.

See what you think.

We, like most other Canadians, prefer a bottle of Labatt's Beer over a Golden.

If we didn't, we'd likely be drinking Molson® instead—and we certainly wouldn't be running this ad.

THINK OF CANADA
THINK OF LABATT'S

© Labatt Importers, Inc., Amherst, N.Y. 1980



P.S. The green Labatt's bottle comes equipped with one of those twist-off tops—which can be rather handy, especially whilst one is otherwise engaged.

The ultimate in Frisbee

By SUSAN HERTEL

With the speed of soccer, the timing of lacrosse, and the excitement of football, Delaware's Ultimate Frisbee team, The Wind, soared to a 28-24 victory over the Trenton State Disc Devils on Sunday.

"This was a great opening game for us," said one of the team's coaches, Buddy Fine. "We really hope to win the regionals this year."

The Wind, which receives no aid from the university, compiled an impressive 16-4 record in the North Eastern region last year.

Sean Quinn was the game's high scorer with seven goals for Delaware.

Quinn pointed out that in the past few years, the number of nationwide frisbee teams and clubs has risen from 300 to over 500. The rising popularity of the sport may be due to the friendly and simplistic attitude maintained on and off the field.

"It's really a gentlemen's game," he said. "You have to hustle and work hard, but you call your own fouls. We don't use any referees and there are very rarely any arguments."

The players main objective is to work the frisbee down the field. However, once a man has the disc, he cannot move until he has released it around tight defense.

As the sport is very similar to lacrosse and soccer, it is filled with dives, leaps, slides and twists in the air. Although the team was surprised that it isn't a bigger spectator sport, it was fairly pleased with the turnout on Sunday.

Steve Peterson, a coach and player, thinks that a bigger audience would improve their play. "People that play frisbee tend to be real hotdogs. We play more intensely with a crowd watching and cheering us on," he said.

Two of Delaware's 23 players, are girls. "I like playing with the guys," said freshman Halliday Heebner. "It gives me a chance to match their skills. They may throw the frisbee longer or run faster, but I still have a chance to prove myself."

Meanwhile, the men of the team don't seem to mind the girls playing. One player commented that although it is a non-contact sport, the girls know that they'll be treated equally. Heebner noted however that "they think girls are so fragile, they give me a little extra freedom."

The players are all enthusiastic about new people trying out for the team. They encourage anyone interested to simply attend their practices on Monday's, Wednesday's and Thursday's at 5:00 p.m. behind Laurel Hall.

One player summed up the team's feelings. "I think we're all proud to play the game Ultimate."



Review photo by Terry Bialas

MICHAEL HOFFMAN passes to a teammate in The Wind's opening season contest. The squad is beginning its sixth season at Delaware.

Audio Visual Arts

817 Tatnall St., Wilm.
652-3361

NOW OPEN SATURDAYS

10-2

Free Parking
on side

**Everything You Need In
Art, Photo and Drafting
Supplies**

10% OFF

Any Item
With this Coupon

Jimmy's Diner

Try our delicious home cooked meals. We have both quality and quantity at reasonable prices. Everybody meets at

Jimmy's Diner.

137 E. Main St.
Newark 368-8338

UNIVERSITY OF DELAWARE

**Friends
of the
Performing Arts**
presents

The North Carolina Dance Theater

"an attractive group with an eclectic repertory... they excelled in works by Balanchine and Tudor"

THE NEW YORK TIMES



in a program of classical and modern dance to music by Prokofiev, Stravinsky and contemporary composers

8:15 p.m. Saturday, Sept. 27
Mitchell Hall - U of D

\$2.50 U.D. students with I.D.
\$5 general public

(302) 738-2204

Tickets available at Mitchell Hall Box Office between noon and 4:00 p.m. Monday-Friday and up to concert time on Saturday, Sept. 27

Sex Information Hotline re-opens

September 22, 1980 7 p.m.-10 p.m.

Regular Semester Hours: Sun.-Thurs. Eves. 7 p.m.-10 p.m.

Call 738-8731

for Confidential/Anonymous Information & Referral on all aspects of human sexuality including Contraception, Venereal Disease, Referrals, Counseling, etc. Sponsored by the Sex Education Program and Wellspring.



Review photo by Neal Williamson

QUARTERBACK RICK SCULLY heads for the goal line for the Hen's final tally Saturday during Delaware's 38-7 win. The Hens head for Veterans Stadium tomorrow night for their annual clash with the Temple Owls.

Elizabethtown hands booters 4-1 defeat

By JIM HUGHES

The Delaware soccer team opened its 1980 campaign Wednesday with a frustrating 4-1 defeat at the hands of Elizabethtown College.

While the Hens seemingly controlled the game throughout, it was Elizabethtown's four goals on 17 shots that told the story.

"We did not have a good day," said Coach Loren Kline, "and Elizabethtown just strung it together."

Defenseman Kent Arnold added, "We haven't been playing the aggressive style of play that we did in last weekend's tournament. We

looked like we were asleep out there."

The scoring for the game got underway eight minutes into the first half when Elizabethtown defenseman Paul Sergi had an indirect kick 20 feet outside the Delaware goal. Sergi's shot caromed off a pile of bodies, and Tim Moyer booted the rebound past a helpless Scott Stepek.

"It was just an excellent shot," said Kline.

Subsequently, however, the Hens began mounting their own attack, with forwards Ken Solon and John Petito setting one another up for shots on goal.

"We had a few good opportunities," said Petito, "We just didn't stick the ball in the net."

Apparently it was the team's problem all day, as they could muster but one goal on 18 shots.

Said Kline, "The good shots we hit were high and wide, and the ones on goal were just soft shots."

The Hens eventually broke the ice at 33:01, when John

(Continued to page 14)

Hens prepare for Temple in annual grudge match

By JONATHAN FEIGEN

The Temple game is upon us.

The Hens will travel up I-95 to meet the Owls at Veterans Stadium tomorrow night in what is always the toughest game on the Delaware schedule.

The Owls are coming off their best season in which they were ranked 17th nationally and finished with a 10-2 record. So does this game mean a little extra to the Hen players?

"Sure it does," said quarterback Dutch Hoffman. "It's that backyard thing. They are close-by distance wise and media wise. Besides they have stopped this team from getting a couple undefeated seasons and we've got a lot of pride. We're winners."

Temple prevented the Hens from those perfect marks in 1971 and last year; both championship Hen seasons.

"Delaware can lose to us and still survive," said Owl Coach Wayne Hardin. "We are at a crucial part of our season (after last weeks 21-3 pasting at the hands of Rutgers). We need to come out hitting well and get a win."

While Hardin readies his team to do some extra hitting, Hen offensive guard Tom Toner expects hard hitting and feels the team is ready for it.

"They'll be ready and really hitting," he said. "But we'll be ready too. We're not scared of the Vet, we're not scared of them and we're not in awe of any of it."

In fact the Hens all seem to share Toner's optimism while Coach Tubby Raymond is looking forward to putting his squad to the test of Temple.

"It's a good game to see just where we stand; to measure our progress," he said. "We get an idea of where we are and where we are going."

Raymond does not, however, consider the game as important for his team as Hardin does for his.

"We've had two outstanding seasons in which we've lost to Temple and won the national championship," he said. The team likes to play Temple. It's a challenge for the kids."

While Temple is coming off a disaster at Franklin Field, the Hens head in to tomorrow's contest on the heels of last week's 28-7 triumph over West Chester.

Although last week's game was not a runaway, the Hens dominated on both sides of the line of scrimmage. Offensively the squad rolled up 294 yards rushing and 162 passing yards. Raymond rotated quarterbacks Rick Scully and Dutch Hoffman, who played with a sore shoulder that prevented him from throwing long.

"I assume Dutch will be alright and start," said Raymond. "If he's not ready we'll go with Scully. I have no reservations about starting Scully."

Scully would have no reservations either, because like the rest of the squad he is brimming with confidence.

"They're tough but we'll do a job," he said. "Right now we are strong, real quick. We'll move the ball throwing or passing unless we make dumb mistakes."

(Continued to page 14)

Spikers take to the court

By KAREN STOUT

Finesse will be the word to describe this year's women's volleyball team, according to coach Barbara Viera. "Due to a few personnel changes our team outlook must be one of finesse."

Lost to graduation are Sandy Kupchick, Mary Beth Maher and last year's outstanding senior athlete Renee DuFlon. Both Kupchick and DuFlon were powerful hitters. DuFlon led the Hens in almost every statistical category including kills (492), serving aces (108) and spiking average (.393).

"This year the team attitude will be different. Last year we had power with Renee. This year we must be smart spikers," said Viera. "Instead of going through blocks we will have to go around them."

Improving on their accomplishments of a year ago will be a difficult task for this year's squad. Last season Delaware was 35-18, won the Region I, Division II title, and participated in the Division II national tournament in Orlando, Fla. However, with a strong experienced group returning from last year, Viera is full of optimism.

Sophomore Donna Methvin, varsity's seventh player last year, will start at middle hitter. Senior letterwinner Ruth Reilly will occupy the other middle hitter slot.

Karen Johnson, returning to volleyball after a two year lay off, will start as an outside hitter.

"Karen looks strong as a starting player. She has game poise and is an experienced player," said the Hen coach.

(Continued to page 13)



Review photo by Terry Bialas

SEAN QUINN defends an opponent in last Sunday's ultimate frisbee contest against Trenton State. Delaware won 28-24. See story on page 15.