

C
L
A
S
S
E

CLASS PRESIDENTS



JAMES NICHOLS
Senior



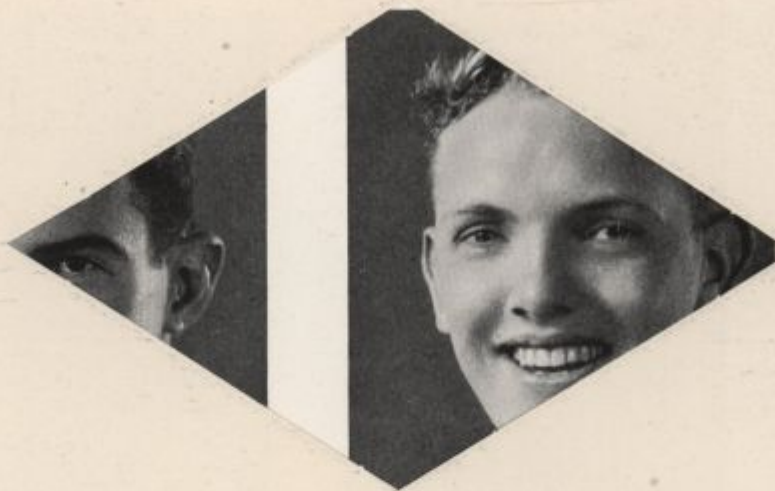
W. GARRETT HUME
Junior



JACK HODGSON
Sophomore



S
E
N
I
O
R
S



MEMORIAL LIBRARY

OUR fine University library of today goes back in origin to the special libraries of the Athenaeum and Delta Phi literary societies. These two rival societies became very active shortly after the reopening of the College in 1870. They held a place of great importance in the College and one hardly to be understood by the student of today. One of the main points of their friendly but earnest rivalry was that of their age; it is safe to say, however, that they were founded very close together during the year 1835. Besides their literary and forensic exercises, these societies developed individual libraries. They were not large, probably less than 1500 volumes each, but they were mainly well selected. For many years, these libraries provided the only general reading facilities for the students.

In 1896 an appropriation was made for a General Library. The libraries of the Athenaeum and Delta Phi, together with new books which were purchased, were housed and catalogued on the second floor of Recitation Hall. Not long after this they were transferred to the top floor of the same building. From here we trace them to Purnell Hall, and then to an old building on the corner of Main Street and South College Avenue. Here they were housed until the erection of the present Delaware Memorial Library in 1924 at the end of "the Green".





CLASS OF 1935

CLASS OFFICERS

James W. Nichols, *President*
 John Tawes, *Vice-President*
 Edward Matthews, *Secretary*
 Eldon Vosseller, *Treasurer*

STUDENT COUNCIL

Charles Cunningham
 Harry Wilson
 Harry Glick
 James Nichols
 Walter Mansberger
 Max C. Mayer
 Frederick S. Kelly

ATHLETIC COUNCIL

Max C. Mayer

LEONARD CARL BARKER

Skilch's long legs have given him excellent service in swimming meets and on the dance floor, but they won't be needed when he takes to the air. Barker wants to be an aviator. If the air corps refuses you, Skilch, you can always turn to chemistry. Might even be best. Remember that glider accident?

Lieutenant 621 C. A. Res.; Swim Captain, 4; Swimming Team, 1, 2, 3, 4; Lieutenant Commander of Sigma Nu; A. S. M. E.



WILLIAM FRANCIS BOLEN

"Bill" is one of Wilmington's pride and joy. He practically lives in Elkton we're told, but since he led our cheering section so valiantly during his four years of college, we'll forgive him. Always popular with the girls as well as the fellows, Bill leads an unassuming life, but the kid gets around—More power to him!

Cheer Leader, 1, 2, 3; Theta Chi.



Review, 1; Interfraternity Track, 2, 3; Interfraternity Basketball, 3, 4; Varsity Track, 2, 3, 4; Manager Soccer, 4; Sigma Tau Phi.



Phi Kappa Phi.

To those who have not had the privilege of intimate association with Elmer, he presents somewhat of an enigma. His quiet, unobtrusive ways, his effervescent humor, his brilliant scholarship, and his athletic interests unite in making him one of our best.

He tells jokes, sings funny songs, studies at Newark, and makes new fortunes (we don't doubt) for the du Ponts in Wilmington. At once serious and silly, Dan Brown, chemist, possesses that which many people desire, a job.

MELVIN BLECHMAN

DANIEL AINSLEE BROWN



JOSEPH JOHN CROWE, Jr.

Joe came well-recommended from Glen-Nor High School, as an all-around athlete. At Delaware he justified and added to his reputation. His legs (which have carried him around the track, down the football field, and over the high-jump) are said to be the one inadequacy in his otherwise perfect physique. Frequent walks to the outskirts of Newark, however, are bringing them up to the desired standard.

Interfraternity Baseball, 1, 2, 3, 4; Interfraternity Basketball, 1, 2, 3; Varsity Football, 1, 2, 3, 4; Varsity Track, 1, 3, 4; Centenary Committee, 3; Druids, 2; Blue Keys, 3; Sigma Phi Epsilon.



ROBERT WALLER CALLAWAY

Bob is a confirmed student and gets excellent marks. He manages, though, to spend quite a lot of time in the R. O. T. C., with track, and with his one and only. Bob has a pleasant smile and although he doesn't seek friends has quite a few.

Tau Beta Pi, 4; Track Manager, 4; R. O. T. C., 1, 2, 3, 4.



Editor-in-Chief Blue Hen, 4; Student Council, 3, 4; Interfraternity Council, 4; Freshman Football: Dereflect, 4; Interfraternity Track, 2; Junior Prom Committee; Glee Club, 2, 3; Interfraternity Play, 3; Band, 1, 2, 3, 4; Interfraternity Baseball, 2, 3, 4; Interfraternity Basketball, 1, 2, 3; College Hour Committee, 3; Centenary Committee, 3; Cast "The Ivory Door"; President Phi Kappa Tau, 4.



Cornie is an easy going fellow who loves to play practical jokes and horse around. A jolly fellow he has lots of friends and has caused many a laugh.

PHILIP TYRE CORNELIUS

No one mentioned in this book is more widely known than Spuggo. His influence is felt from the Atlantic Ocean to the Mississippi, and from Pittsburgh to a certain little town in Ten-Ten-Tennessee. Although he does plenty of hard work he still finds time to play—always in the most approved fashion.

CHARLES NELSON CUNNINGHAM, Jr.



ROBERT E. LEE DAVIS

Robert E. Lee Davis might be another Weismueller, Vines, or Jones but he lacks that initiative of his illustrious namesake. But Bob's likable unpretentiousness has won him his fraternity presidency. With the exception of one social liability—he doesn't dance—Bob is the polished gentleman.

J. V. Tennis, 1; Class Football, 1, 2; J. V. Golf, 2; Varsity Tennis, 3; A. S. M. E. Secretary, 3; A. S. M. E. Chairman, 4; Interfraternity Council, 3; Interfraternity Council Secretary and Treasurer, 4; Derelicts, 4; Interfraternity Swimming, 2, 3, 4; Interfraternity Basketball, 2, 3, 4; Interfraternity Baseball, 2, 3; President Sigma Nu, 4.



DONALD MILLER DARRELL

Behold the most virtuous of them all! Don holds that record up at the OX House. He is a very good engineer, but S-S-Dietters in his sleep. More power, me fine fellow.

Soccer, 2, 3, 4; Interfraternity Basketball, 2, 3, 4; Class Football, 1, 2; Interfraternity Baseball, 3; Theta Chi; Tau Beta Pi.



Fencing Team, 4; Review Staff, 2, 3, 4; Cast of "Royal Family" 3, "The Late Christopher Bean" 4; Interfraternity Plays, 3, 4; Interfraternity Basketball, 4; Drum Major, 4; University Symphony Orchestra.



Inter-class Football, 1, 2; J. V. Baseball, 1; Varsity Baseball, 2, 3, 4; R. O. T. C. Band, 1, 2.

Abe is perhaps best known for his absent-mindedness. But in spite of this, he is a serious thinker and dotes upon interminable, profound philosophical discussions. He has an unusually sincere interest in becoming a lawyer and puts forth great effort in preparing himself for that end. Abe is honest in his opinions and a square-shooter.

Frank is a quiet, serious fellow. He is not very easy to know, but is a valued friend to those who do know him. Liked by all, Frank in his quiet way, will undoubtedly get much out of life.

ABRAHAM HERMAN EISENMAN

FRANKLIN PEACH FOARD



WILLIAM WELCH GARBUTT

Bill is a student and spends most of his time on the books. He seeks recreation in sports, but doesn't take any of them very seriously. If he did he would probably do well in them. Those who know him well enjoy his sense of humor and pleasant ways.

HARRY AARON GLICK

Nick has two ambitions: to discover perpetual motion and to play Cyrano de Bergerac without make up. Frustrated to date in both desires he may seem cynical but it is merely to hide the anguish of his soul. Glib tongued, his homely wit affords hours of pleasant diversion. Nick's future address will be somewhere in the wilds of Africa, where he will establish a chapter of the A. S. M. E.

Varsity Baseball, 1, 2, 3; J. V. Basketball, 1, 2, 3; Class Baseball, 1, 2; Class Basketball, 1, 2; Interfraternity Relay, 1; Tau Beta Pi.



Student Council, 2, 4; Review, 3; Junior Prom Committee, 3; A. S. M. E., 1, 2, 3, 4; Sigma Tau Phi.



R. O. T. C. Band, 1, 2, 3; Tau Beta Pi.



Wolf Chemical Club, 1 and 2; Sigma Phi Epsilon.

Moe is a confirmed "ham." Someday he will write a book entitled *The Anatomy of Radio*. He is a practical man—no mere arithmetician.

John went to Delaware for a few years, went out to look the outside world over, didn't like it much, and came back to Delaware. We were mighty glad to have him return because he is such a pleasant gent to have around, and he's always willing to be a fourth at Bridge—a game in which his enthusiasm carries him, rather than any knowledge of how to deal with the complexities which arise.

MORRIS GREENSTINE**JOHN WILLIAM GOTWALS, Jr.**

JOSEPH FRANCIS GREEN

Joe came to Delaware from Chester High School, where his name was synonymous with athletics. At Delaware he continued his athletic career and added to his laurels on the football field and the track. Joe has concentrated on the social whirl during his Senior year and is reputed to be as strategic and wily at that activity as he was when Varsity quarterback.

ROY LINDEN HILL, Jr.

When not found viciously assaulting a ping-pong ball, Roy may be seen wending his way to the Library. This last activity, the search for knowledge, has been effective enough to merit Roy a Phi Kappa Phi election. But frankly, we suspect some of those Library visits motivated by a platonic love affair.

Varsity Football, 1, 2, 3, 4; Varsity Track, 1, 2, 3, 4; Interfraternity Swimming, 1, 2, 3, 4; Interfraternity Track Coach, 3, 4; Interfraternity Basketball, 1, 2, 3, 4, Coach, 4; Derelicts, 4; Interfraternity Baseball, 3, 4; Sigma Phi Epsilon.



Tennis Team, 3; German Club, 3, 4, President, 4; Sigma Nu.



R. O. T. C., 1, 2, 3, 4.

Jim is an R. O. T. C. but an excellent student too. He is very quiet and goes his way without paying much attention to anything but his studies.

Issy gets high marks and works besides. Although not socially minded Issy is well liked. He is a quiet fellow and manages to get a lot more done than people realize.

JAMES MELVILLE HUTCHISON

ISADORE HOFFMAN



SAMUEL MIFFLIN HUNN

When Mother Nature gave out her physical prizes, Sammy must have been near the end. Nearly the smallest member of his class, he has more pep, fire, and "speed" than most any of us. Here lately he has been going back down state a lot—has given her a big diamond, too. Congrate, Sam. Maybe that accounts for his absent-mindedness or "punchy" warp. Sam, on the other hand, is one of the best liked fellows in his class, being a good track man, and a fine president of O. X.

Class Vice-President, 2; Interfraternity Relay, 1, 2, 3, 4; Interfraternity Plays, 1, 3, 4; Varsity Soccer, 3; Track, 2, 3; Review Staff, 1, 2; 2nd Lieut. R. O. T. C.; Vice-President Interfraternity Council, 4; President Theta Chi, 4.



Interfraternity Baseball, 3; Theta Chi.



THOMAS EDWIN HANAWAY

Tom is one of those hard workers who takes part in any number of activities. Tom knows what he is after and doesn't let anything interfere with his aims. Success seems sure for Tom with his driving energy and ability.

J. V. Soccer, 1; Class Treasurer, 1; Interfraternity Plays Author, 2, 3; Review Staff, 1, 2; Footlights Club, 2, 3, 4; Alpha Psi Omega, 2, 3, 4; Interfraternity Swimming, 2; Junior Prom Committee; Glee Club, 3; Newman Club, 4; "Remote Control," "Doll's House," "Autumn Crocus"; E 52, 3; College Hour Committee, 3; Phi Kappa Tau.



J. V. Baseball, 1, 2, 3; Interfraternity Basketball, 1, 2, 3, 4; Interfraternity Baseball, 1, 2, 3; Interfraternity Track, 1, 2, 3; Editor Aggie News, 4; Agriculture Club; Phi Kappa Tau.



This quiet young fellow came to us from Philadelphia four years ago, unheralded, unsung and without any noise of his own making. But look at him now—full of fun, a great funster, and a ladies' man on the side. Nice going Walt!

WALTER DENNEY HOFFECKER

Here is a quiet and unassuming young man who is truly a friend to every one. Some of his successful ventures would include taking the Practice House by storm, wearing down the basketball court at least one-half an inch, and being the main attraction at Phi Kappa Tau house parties.

HOMER THAWLEY HOPKINS



HARRY LEROY HINNERSHITZ

Just another Comical Engineer! But you are only partly right. "Hinner" is good in anything in which he is interested. As a ladies' man, he is a whiz. He plays a great hand of bridge and dances like Henry VIII. As one who continually seeks light, we know he will succeed.

Varsity Rifle Team, 1, 2; J. V. Baseball, 1; Sophomore Football, 2; Varsity Soccer, 3, 4; Interfraternity Swimming, 2, 3; Interfraternity Baseball, 2, 3; R. O. T. C. Band, 1, 2, 3, 4; Theta Chi.



Footlights Club; E 52.



He is another hard working gentleman. Joe seems to put his whole heart and soul into everything he does. Always considerate of other people's feelings, Joe never refuses to help a friend in need. He is quiet and scholarly, but when aroused throws that left fist like a baseball. Here's to more of your kind, Joe.

JOSEPH RUSSELL JEFFERSON

SOLOMON JASPER

Edwin Markham's "Man with the Hoe" may have been bowed down with the weight of his worries, but Sol is weighed down by his charms. The best thing that college has done for Sol is to offer a medium for the expression of his ability as a playwright. His engaging personality as well as his past campus activities also possibly prophesy a future political career.



Football Squad, 1, 2; Freshman Football, 1; Interfraternity Basketball, 1, 2, 3, 4; Interfraternity Baseball, 2, 3, 4; Interfraternity Track, 1, 2, 3, 4; Interfraternity Plays, 2, 3, 4; Editor Freshman Handbook, 4; Review Staff, 1, 2, 3; Business Manager Review, 4; Interfraternity Council, 3, 4; Student Council, 3; Footlights Club, 2, 3, 4; Bar & Clef Club, 3; Junior Prom Committee, 3; Blue Key, 3; Cooperated in: "Remote Control" 2; "Royal Family" 3, "Pirates" 3, "The Late Christopher Bean" 4, "Family Upstairs" 4; "Three-Cornered Moon" 4; President Sigma Tau Phi, 3, 4.



Inter-class Football, 1, 2; Inter-class Basketball, 1, 2; R. O. T. C., 1, 2, 3, 4; Cadet Captain, 4; Sigma Nu.

On inspection day Capt. Jefferis, a hard-boiled soldier, is the scourge of the poor buck privates. But really, Jeff doesn't mean it; he's everybody's friend. He even disciplines himself to hard work. Besides college work, Ed assists Colonel Tanner at Ferris School and gets in a basketball season, too. A salute for the general!

EDWIN CLAYTON JEFFERIS



CARLTON SLAUGHTER GARRISON

Meet Master Garrison. His many talents would include motor-cycle racing, cinema love-making, Huey Long speech making, exploitation of the soy bean, short-sheeting beds, and chiseling butter at the De Luxe. There are many more but space is limited.



ALBERT MARSEE LUPTON

Al is the Lewes boy noted for the natural blush, one that has stimulated many a female heart to excessive palpitation. And speaking of palpitations, Al is going to be a doctor; in fact, he's so anxious to enter "med" school that he has completed the four year course in three years. With all this, Lupton managed to garner a varsity letter in soccer.



Varsity Soccer, 1, 2, 3; Varsity Swimming, 1, 2; Sigma Nu; Phi Kappa Phi.

Varsity Swimming, 1, 2, 3, 4; Varsity Tennis, 1, 2, 3, 4; Varsity Track, 1; Interfraternity Basketball, 1, 2, 3; Interfraternity Track, 2; Interfraternity Plays, 1, 2, 3, 4; Student Council, 1, 2; Alpha Psi Omega and Footlights Club; Casts: "Death Takes a Holiday," "Remote Control," "Cradle Song," "A Murder Has Been Arranged," "Autumn Crocus," "The Royal Family," "The Family Upstairs"; Sigma Phi Epsilon.

Wherever you go you see him. Everett Lodge, Hillcrest's pride and joy, seems to be everywhere. We weren't even very much surprised to find him aboard the "Zephyr" when that crack train pulled into town last fall. His cheering smile does the trick.

EVERETT ELLSWORTH LODGE

Here's a gentleman who merits the greatest of praise. From the glaring footlights of the stage he entered Delaware to learn the art of muscle building. His inexhaustible line of talents has brought him laurels in swimming, track and dramatics. And too—few men have climaxed their college careers down the aisle. Best of luck to you "Broadway Bill."

HARRY WILLIS LAWRENCE



LEON LEVY

A man of character and strong convictions, and undaunted by the antagonism of those who would oppose them, "Tony" has carried them out to the best of his abilities. An affable chap at heart, he makes a sincere, loyal friend. A very good student he's getting his degree in three years. And a swell dancer too! Ask the girls.

FREDERICK EUGENE MORGAN

Pete is an ingenious smoothie. He likes to get around and manages with ease. Although he seldom studies and is not serious at all he manages to get by in his classes.



A. S. M. E., 2, 3, 4,
President, 4; Tau
Beta Pi.

A. S. C. E., 1; Re-
view, 1, 2, 3; Manag-
ing Editor Review, 3;
President Newman
Club; Theta Chi.

Here is a brilliant student. He is a commuter and doesn't do much but study while on the campus, but he is a very pleasant, cheerful fellow with quite a few friends.

Old Jim Mulrooney is just another Casa Nova. His winning personality is his greatest single asset. Although he is really the youngest First Lieutenant in the National Guard, his "tactics" are old indeed—live, love,—and laugh.

EUGENE MADEY

JAMES PAUL MULROONEY



WALTER BENJAMIN MOORE

Walt is without a doubt the Don Juan of Phi Kappa Tau. His conquests are not restricted to W. C. D. alone—not by a long shot. Did you ever hear him mention Amstel Avenue? Quite a stamping ground. He is indeed a man well worth knowing. His advice has often proved itself invaluable.

Cadet Capt., R. O. T. C.; Phi Kappa Tau.



Review, 2; Blue Hen, 3; Newman Club, 3; Phi Kappa Phi, 3.



FRANCIS CHARLES MAYER

Frankie is loquacious, but it's the salesman in him. He is a prodigious seller of tickets for proms, plays, etc. This initiative and perseverance have helped Frank through some scholastic hazards. They may also account for his success on the gridiron and the track. Ten to one on Frank to win!



Football, 2, 3, 4; Track, 3, 4; Interfraternity Track, 2, 3; Interfraternity Plays, 3; Junior Prom, 2; Derelicts, 4; Newman Club, 4; Symphony Orchestra; Band 2, 3; Sigma Nu.



Interfraternity Basketball, 1; Varsity Baseball, 2; Assistant Sports Editor Blue Hen, 3; Sports Editor Review, 2, 3, 4; Blue Hen Staff, 4.

"I'm the owner!" Shouts this great motor-magnate as he speeds through Newark at fifteen miles an hour. Dog-fancier, home-lover, three year man, future Supreme Court justice and, above all, uncle. "My nephew" he begins, and an experienced audience immediately scatters.

Reds hails from Wilmington High School where his feats on the football field and basketball floor earned him a lasting reputation. His "ticker" cheated Delaware out of a star athlete but gave us an able, well-informed sports commentator. His ability as a basketball referee is exceeded only by his genial good humor. He is a severe critic, both of himself and others, and he is a generous, sympathetic, well-rounded good fellow.

WALTER PHILIP McEVILLY

RALPH CARLTON McMULLEN



RICHARD REID MANN

Dick is bound to graduate and well—we admire him for his determination. Dick is a many sided person—always ready for a good time, always gets his work done, sometimes very serious, and often very gay. Dick has had varied experiences and when he finds what he wants should make out.



J. V. Football, 1; Varsity Baseball, 1, 2, 3, 4; J. V. Basketball, 1, 2, 3; Varsity Basketball, 4; Varsity Soccer, 2, 3, Captain, 3; Interfraternity Relay, 1, 2, 3, 4; Interfraternity Basketball, 1, 2; Captain Battery C, R. O. T. C., 4; Druids, 2; Blue Keys, 3; Derelicts, 4; Head Waiter of Commons, 4; Theta Chi.



Del is a real go-getter. A fine athlete and a good student, Del is a prominent campus figure. Del isn't afraid of criticism but does what he wants to. Del should get places and he knows where he wants to go, too.

DELBERT MASSEY MINNER

HARVEY MAGUIGAN

Mac is probably the best student that has ever attended Delaware and one of the best fellows. Mac finds time for a great number of things and is tops in all of them. Mac is not only respected for his ability and honors but is one of the best liked fellows in college—good company anywhere. Mac, I am sure, will make a great success in whatever occupation he takes up. The best of luck, Mac, we're all cheering for you.



Cadet Major; Phi Kappa Phi; Derelicts; Alpha Psi Omega; Footlights; Glee Club; Secretary Junior Class; "Autumn Crocus," "The Doll's House," "The Cradle Song," "The Royal Family," "The Late Christopher Bean," "Centenary Pageant," "The Pirates"; Contributing Editor Review; Associate Editor Humanist; Blue Hen.



President Student Council, 4; President Blue Keys, 3; President Junior Class, 3; Athletic Council, 4; Football, 1, 2, 3; Basketball, 1, 2, 3, 4; Sigma Nu.

Eve, our six-feet-eight giant from Southampton, New York, has literally and figuratively been a tower of strength to us. Quantity and quality are his in equal measure and he has stood out persistently as a class leader; he now holds the coveted leadership of Student Council. Capability and a genial nature make Eve a favorite with us at Delaware and with—O, Venus!

WALTER JOHN MANSBERGER



THOMAS JULIO MALATESTA

A scholar, musician, philosopher, and, above all, a gentleman. Ladies, what more can you ask? Tommy's frequent trips down state have brought about a noticeable change in him for the better. No doubt, his musical ability will lead him up the ladder of success—good luck, Tommy.

Band, 1, 2, 3, 4; Class Football, 2; Glee Club, 3; Interfraternity Relay, 3; Phi Kappa Tau.



E 52, 1, 2, 3; Footlights Club, Treasurer, 3; Football, 1, 2; Class Football; Business Manager The Blue Hen; Sigma Nu.



MAX CHARLES MAYER

Max runs the commuters' room in section B, and helps Doc Doherty run the cage squad. Active in extra-curricular activities from his Freshman year on, Max has always been as well liked as he is well known. Distinctly a man's man, he is one of the most popular personalities on the campus.

A. S. M. E., 1, 2; Student Council, 2, 3, 4; Vice-President Student Council, 4; President Sophomore Class, 2; Manager of Basketball, 4; Junior Prom Committee, 3; Class Basketball, 1, 2, 3.



Varsity Soccer, 1, 2, 3, 4; Varsity Baseball, 3, 4; Class Football, 1, 2; A. S. C. E., 1, 2, 3, 4; President, 4; Interfraternity Swimming, 2, 3; Interfraternity Basketball, 2, 3, 4; Junior Prom Committee; Derelicts, 4; Sigma Phi Epsilon.



Never argue with Dan; his points may not be put logically but they are certainly put loudly. Much of this forensic power is devoted to persuading his fraternity brothers that Sigma Nu should sponsor weekly house parties. Dan's a social lion, you see. And by the way, Dan is going intellectual—commendable, son!

DANIEL KERFOOT MEDILL

Buddy is one of those consistently nice people whom you meet so rarely. His most outstanding characteristics are his contagious good nature and his total abstinence from the good old Delaware custom of griping—any kicking to be done, Buddy does it on the soccer field and does it very, very well.

JOSEPH KNOWLES NEWMAN



JAMES WARREN NICHOLS

Jimmy has always been very conscientious in his many activities. (Did you ever play bridge with him?) While winning a Rhodes Scholarship nomination, managing our football team as well as the finances of his fraternity, he "made" Phi Kappa Phi and kept a bevy of girls' hearts aflutter at W. C. D.

President Senior Class, 4; Editor Review, 4; Manager Football, 4; Phi Kappa Phi; Debating Team, 1; Interfraternity Play, 4; Student Council, 4; Blue Key, 3; Derelict, 4; R. O. T. C., 1, 2, 3, 4; Theta Chi.



Football, 1, 2, 3, 4; Varsity Basketball, 1, 2, 3, 4, Captain, 4; Varsity Baseball, 1, 2, 3, 4, Captain, 4; Druids, 2; President Derelicts, 4.



If, some day, you hear the name O'Connell as being the coach of some large school, don't be surprised. "Irish" is a member of Delaware's first Phys. Ed. class and is considered one of the best. "Dude" has made a name for himself in athletics, being one of Delaware's few three-letter men. A member of Delaware's "A. C.," he has proven to be an exception to the rule, being considered at W. C. D. and elsewhere as a playboy and lover of note.

RALPH ARNOLD O'CONNELL

JOHN JOSEPH O'CONNOR

"Chick" is a very silent chap, but when he is moved to say something you can be sure he knows what he is talking about, and can back up anything he says. He has commuted for four years, but his commuting days were ended this spring when the town ordinance forbade the solicitation of rides. Chick divides his natural basketball ability between his fraternity and his teams in Wilmington. Because of his fine record at Delaware he has ideas of attending medical school.

Varsity Football, 1, 2; Interfraternity Track, 2; Interfraternity Basketball, 1, 2, 3, 4; Sigma Phi Epsilon.



Soccer, 1, 2, 3, 4, Captain, 4; Basketball, 2, 3, 4; Baseball, 1, 3, 4; Interfraternity Basketball, 1, Coach, 4; Inter-class Basketball, 1; Blue Key, 3; Sigma Nu.



Jim is the "pride" of Lewes and we're going to miss this curly-headed chap's consistent work in soccer, basketball, and baseball. Pride's departure will grieve W. C. D., too, for the girls have literally swamped his college career with dance invitations. Gosh, it just seems that everybody likes you, Jim!

JAMES PRIDE PRETTYMAN



ROBERT CURTIS POTTS

Curt is one of those cheerful fellows who never lose their tempers. This quality has stood him in good stead as the President of Footlights Club and as head cheer-leader.

JAMES HOWARD PATTERSON

Pat got off to a slow start but he surely finished in a blaze of glory. He is a student, a consistent worker, and the possessor of a good personality—sometimes agnostic. His ability to get the "profs" on his side is a joke among his fellow engineers, but we know he is the type who will show plenty of speed climbing that old fortunate ladder.

Varsity Soccer, 1, 2, 3, 4; Cheer Leader, 1, 2, 3, 4; Captain, 3, 4; Alpha Psi Omega, 2, 3, 4; President, 3, 4; Footlights Club, 2, 3, 4; President, 3, 4; E 52 Players, 2, 3, 4; Chairman Interfraternity Play Contest, 3, 4; Plays, "Outward Bound," "Remote Control," "The Royal Family," "The Family Upstairs"; The Review, 4; R. O. T. C., 1, 2, 3, 4.



Student Council, 3; Soccer, 2, 3, 4; Tau Beta Pi; Interfraternity Basketball; R. O. T. C., 1, 2, 3, 4; Theta Chi.



A. S. C. E., 1, 2, 3, 4.



Class Basketball, 1, 2; J. V. Basketball, 1, 2; Varsity Basketball, 3, 4; Captain, 3, 4; Derelicts.

Harry is a quiet and unobtrusive student who finds most of his interests in books and cards.

Charlie is always bubbling over with fun and good cheer. His sense of humor is astounding. Charlie is the life of any group. In spite of his size Charlie is a fine athlete.

HARRY ANTHONY PROSCENO

CHARLES ST. CLAIR PIE



THOMAS COOMBE ROE

Small, cute, and blond—Here's a prize to scramble for girls—Alas—No chance! Tommy is all tied up down in Dover. Never was there a chap who worked harder for his friends and organizations. Tommy is known for his shrewdness and business ability. We are sure success for him is not far off.

Manager of Swimming, 4; Manager of Tennis, 4; Druids, 2; Blue Key, 3; Alpha Psi Omega, 4; Footlights Club, 3, 4; E 52 Players, 4; Student Council, 3; Junior Prom Committee, 3; Theta Chi.



Economics Club, 2; Drum Major, 2; Varsity Fencing, 1, 2, 3, 4; Manager, 3; Captain, 4; Sigma Nu.



JOHN NICHOLAS RUSSO

When "Nick" lived at the A. C. he could be seen walking the campus dressed in an old pair of trousers and a "D" sweater. Since he began developing Hebraic muscles for a sizable stipend, however, our "Nick" has blossomed forth fastidiously attired in what the sartorially-correct race-track devotee will wear—and liked it. Nick's job makes it necessary for him to spend most of his time in Wilmington.



Football, 1, 2, 3, 4; Druids, 2; Derelicts, 4; E 52 Players, 2, 3; Footlights Club, 3, 4; Alpha Psi Omega, 3, 4; Review Staff, 3; Junior Prom Committee, 3; Track, 1, 2; R. O. T. C., 1, 2, 3, 4; Cadet Captain, 4.



Class Football, 1, 2; Interfraternity Swimming, 2, 3; Interfraternity Baseball, 3; Band, 1, 2, 3, 4; R. O. T. C., 1, 2, 3, 4; Cadet Captain, 4; Tau Beta Pi; A. S. C. E.; Sigma Phi Epsilon.

A smoothie, that's Hen. Hen probably has more girls on the string all the time than any one of us has dates for a year. Plenty of complications, yes, but Hen keeps them all guessing.

Frank has been commuting to Delaware for years, with the result that lack of time has made it impossible for him to enter into many college activities. While he cannot point with pride to a long list of extra-curricular activities, he could point with pride (if they were tabulated) to a very long list of fellow-students who think he's a pretty fine guy, and to an enviable scholastic record.

HENRY JOHNSON RIDGELY

HAROLD FRANKLIN REDMILE



WILLIAM ALZOR STURMAN

This neatly tailored young man is one of our pre-meds. As such he spends day after day learning the intricate workings of the human body; necessarily, he appreciates the power of coordination and harmony found only in man. Bill carries his study in harmony to the dance floor and we bet there's not a Saturday night or a Kentuckian engagement that doesn't find him leading some young lady over the waxed surface.



Soccer, 3; Rifle Team, 1; Class Basketball, 2; Interfraternity Baseball, 2, 3; Interfraternity Basketball, 1, 2, 3, 4; A. S. M. E., 2, 3, 4; Theta Chi.

LOUIS HARRY SCHINFELD

A good student, but no grind, Louis came from Wilmington High with an excellent record which was climaxed here by his election to Phi Kappa Phi. A bit of a magician on the side, he holds the record for packing people into an automobile.



R. O. T. C., 1, 2, 3, 4; Phi Kappa Phi.



Track; Phi Kappa Phi.

Now here is a lad from B. D. (below Dover to you). Always quiet, easy going, smooth, devil-may-care, "Al" fools a lot of people; but you ought to see him when he goes up to the "Cabin" for a little relaxation. Here recently, however, an influence from Northern Delaware has been making him walk the straight and narrow. Watch your step, Al.

GEORGE ALVIN SEELY

Here's a man for you! Hen has a job, a girl, and will graduate in three years as a Phi Kappa Phi. Quick, keen, and decisive, with a fine personality, Hen is sure to become a real doctor.

HENRY HERBERT STROUD



JOHN ALEXANDER SALIN

Here is a man whose love life has been confined to watts and amperes. In spite of everything done by designing inmates of W. C. D., our Jack has remained true to some lucky young lady whose name and address we have never been able to find out. This is truly an all time record.

Radio Club, 1, 2, 3;
Interfraternity Base-
ball, 3; Tau Beta Pi;
Phi Kappa Tau.



Fencing Team, 1, 2,
3, 4; Phi Kappa Phi,
4.



OLIN LOWE MacSORLEY

In addition to being one of the "top" scholars in his class, making both Tau Beta Pi and Phi Kappa Phi, Mac has found time to star on the fencing team for four years. He is equally adept at slipping a slide-rule and whirling a blade. He is a quiet chap, a bit hard to know, but whose acquaintance repays the cultivation thereof.

Fencing, 1, 2, 3, 4;
Rifle Team, 1; Tau
Beta Pi, 3; A. I. E.
E., 4.



Varsity Soccer, 1, 2,
3, 4; J. V. Soccer
Coach, 4; Varsity
Baseball, 1, 3; Class
Football, 1, 2; Inter-
class Track; Inter-
class Baseball; Inter-
fraternity Baseball;
Footlights Club; Vice-
President Class, 4;
Captain, Adjutant of
R. O. T. C. Battalion.



One of the most friendly men on the campus is Izzy Slovin, fencer, student, and good fellow. Together with Schinfeld and Sturman, Slovin forms that inseparable trio of pre-meds, the three S's.

ISADORE SLOVIN

Johnny is the fellow who bawls out "Parade Rest" (that's really what he says) at parade. His sojourn in Newark has not eliminated his "shore" accent or his ability as a soccer player. He never passes up a dare—and very few "dears". His slow smile and sly wit have a persuasive charm that cannot be resisted.

JOHN PAUL TAWES



SMITH CATLIN TOULSON, Jr.

He came to us like a lamb, but that trip to Pittsburgh was the last straw. What happened out there is a deep mystery, but the results are over-whelmingly apparent. He leaves us as a lion—yea, even two or three "lines." We are convinced that a trip to Pittsburgh would more than pay for itself.

ROBERT ELMER TANNER

Our Bob toots a mean sax in the Kentuckians Orchestra and contributes his talent to the University Band. Bob is carrying on his family tradition by being a very capable officer in the R. O. T. C. Unit. Bob is quiet and reserved on the campus and in his classes, but is a very likable chap just the same.

Class Football, 1, 2; Band, 1, 2, 3, 4; Radio Club, 1, 2, 3; Baseball, 1; Glee Club, 3; University Orchestra, 3; Student A. I. E. E., 4; Tau Beta Pi, 4; Phi Kappa Tau.



Band, 1, 2, 3, 4; Interfraternity Basketball, 1, 2; Blue Key, 3; Manager Golf, 3, 4; Interfraternity Swimming, 2, 3; Class Football, 1, 2; Sigma Phi Epsilon.

Swimming, 1, 2, 3; Footlights Club, 2; Alpha Psi Omega, 2; Phi Kappa Phi; "Royal Family," "Remote Control," "Death Takes a Holiday."



Chairman Freshman Class; Soccer, 1, 2, 3; President Athenaeon Society; Theta Chi.

This is Johnny's big year, for he gained his varsity letter in swimming and won a Phi Kappa Phi election. Besides, he will have completed his pre-med course in three years. We rejoice with you, Johnny, for your sincerity and modesty have won us. Here's to another good doctor!

Folks here is a character indeed. Well liked, easy going, steadfast to his love, an excellent waiter, and yet would habitually gripe about anything just for the fun of it. Yet where can you find a fellow who is in love, who does not live in a world full of roses one day and thorns the next.

JOHN PAUL AUGUST VEIT

ELDON RICHARD VOSSELLER



ROBERT MELVIN VERNON

During those three years Bob commuted, he seemed an introvert, but a senior year at the Sigma Nu has allowed him to cast aside inhibition and be a regular fellow. Basketball, baseball, and occasional cross-words take up spare time, but fundamentally Bob is a scholar—and, of course, a gentleman.

Sigma Nu.



FREDERICK SMITH WILLIAMS

Freddie is a pleasant fellow who is well liked by all. He is serious about his studies but doesn't let them interfere with his social life. Freddie will probably be a respected business man some day.

Kappa Alpha, Vice-President, 3.



Review Staff, 1, 2;
E 52, 1, 2, 3; Phi
Kappa Phi; Cast,
"Lilliom," "Bird in
Hand."



R. O. T. C.

Wills is one of those delvers in Greek and Latin. A minister and married, he yet found time for extra-curricular activities. When it was Wills' turn to give a talk or report, the class listened for a change.

T. O. M. WILLS

The pen may be mightier than the sword, but Wetherell takes no chances; he cultivates an interest in the pen by enlisting innumerable English courses and at the same time he wields a sword in the R. O. T. C. Besides, Bill helps Ditto Lewis run the Library. When not particularly busy, his favorite sport is good-humored "gripping."

WILLIAM ROBERT WETHERELL



HARRY MYERS WIRT, Jr.

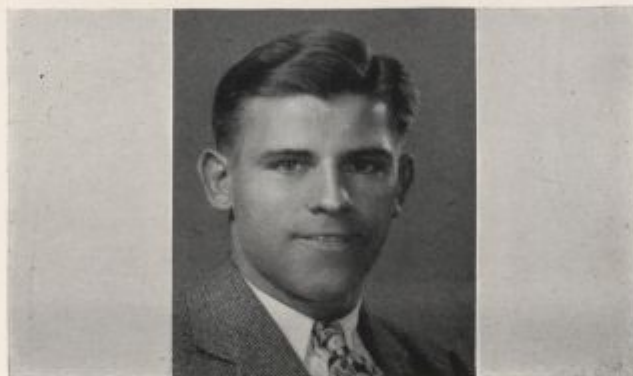
A serious student, Harry has prepared himself to study law. He will enter the University of Michigan Law School in the fall. He is well known and liked for his determination and for his sunny disposition.

HARRY TINNEY WILSON

"Pinhead," as he is tenderly known to those who are intimate friends, is a little man with big ideas and an uncanny knack of carrying them out. Harry has done practically everything he set out to do when he entered Delaware, with the possible exception of becoming an Engineer, which proved to be too much for him. Let's hope Harry will be as successful after graduation as he has been in the (?) years he has spent at Delaware.



R. O. T. C., 1, 2, 3, 4; Varsity Swimming, 1, 2, 3, 4, Captain, 4; Interfraternity Council, 3, 4, President 4; Student Council, 3, 4; Manager Football, 1, 2, 3, 4, Co-Manager, 4; Derelicts; Track, 3; Baseball, 4; Sigma Phi Epsilon, President 3, 4.

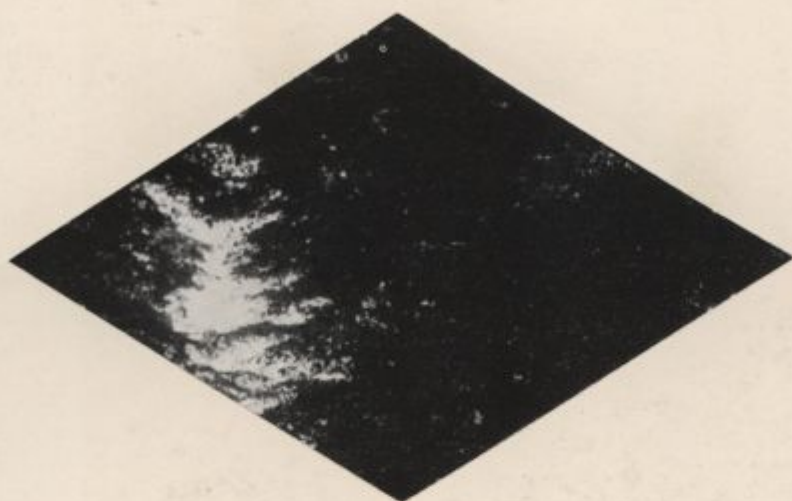


Class Football, 1, 2;
R. O. T. C., 1, 2, 3, 4.

Another of those numerous Wilmington High graduates, Fred has the reputation of having obtained the best sun tan in college last summer. Having combined the pre-law and education courses, he is talking of attending Temple Law School next fall.

FRED LEWIS ZABOWSKI





J
U
N
-
O
R
S

of becom
to be too muc
will be as success
has been in the (?)
Delaware.



R. O. T. C.
4; Varsity S.
1, 2, 3, 4
Interf
cil

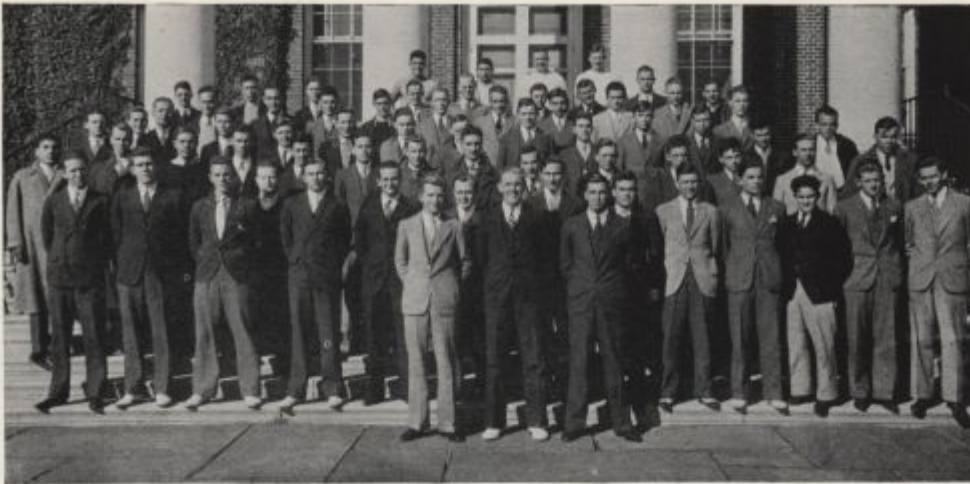
“LINDEN AVENUE”

THE famous old lindens of “Linden Avenue” have stood guard over Delaware College since the days of its infancy. And in May two years ago they witnessed the hundredth anniversary celebration of their charge.

This was not the first celebration these majestic trees had witnessed. In 1869 a public banquet was spread beneath their shade in joint celebration of the reopening of the College after its closing in 1850 and of the hundredth anniversary of the Newark Academy.

Delaware is fortunate in having these stately European Lindens, probably the finest of their kind on any academic campus in the United States. Great honor is due to H. Rodney Sharp, who has contributed to the preservation of these trees so that they might be saved to reign like mighty monarchs of beauty over the campus during the generations to come.





CLASS OF 1936

CLASS OFFICERS

Garrett Hume, *President*
 William Croes, *Vice-President*
 John Carey, *Secretary*
 James W. Kelly, *Treasurer*

STUDENT COUNCIL

Ralph L. Walson
 John Monroe
 John Bishop
 Thomas Foster
 Jack Hartmann
 Garrett Hume
 Alvin Handloff

ATHLETIC COUNCIL

John Carey

ALBERT WHITE ADAMS

When Baldy abandoned Dover to the legislators and set out for Delaware he had three things in mind: Become a teacher, to be an athlete, and to conquer W. C. D. Finding these things easy, Adams broadened his field to include a sports' editorship of the *Review* and an R. O. T. C. course. Be careful, Baldy; ambition killed Macbeth.

Varsity Soccer, 1, 2, 3; J. V. Basketball, 1, 2; Fraternity Basketball, 1, 2, 3; Review Staff, 2, 3; Band, 1; R. O. T. C., 1, 2, 3, 4.



HARRY ELWOOD ALGARD, Jr.

A little bundle of chatter, one to rival even the great Pancoast, Harry has weakened his eyes by continual exposure to math tests. Fit to be a brain truster, this embryo teacher has his life planned to the minutest detail. They say he has regular office hours at the library.

Glee Club, 2, 3; "Pirates," 2; Centenary Pageant, 2.



Glee Club, 2, 3; Tau Beta Pi, 3; Secretary E. E. Club.



Student Council, 2, 3; Blue Key; Interfraternity Council, 3; Assistant Manager Track; Junior Prom Committee; Blue Hen Staff.

Beatty is our Barney Oldfield; he likes speed. And we like John. Hence, every night we say a prayer for him and *à propos* of that, we ask God to bless the pedestrians of Newark. Fortunately, virtue balances vice in this case, for John is an outstanding electrical who boasts a Tau Beta Pi membership.

"Wot-a-man Bish," comes to us from the confines of Southern Delaware. If "you all" want to meet a congenial, hard-working, comical engineer, here he is. Bish likes social life and all its entities—including davenport. We have "all ways" found him a pleasant and true comrade.

JOHN WOOD BEATTY, Jr.

JOHN TOWNSEND BISHOP



CARL BLEIBERG

Thespian, journalist, literateur, and man-about-town, Carl has not yet decided whether to emulate Lionel Barrymore, Heywood Broun, Sinclair Lewis, or Jimmy Walker. Carl is a reformer at heart, whose greatest lament is that he cannot find things to reform. He has a charming aggressiveness that is completely disarming and makes one at once sympathetic with his opinions and pleased with his company.

Review, 1, 2, 3, Campus Editor, 1; Interfraternity Plays, 2; Junior Prom Committee; Swimming, 2; "Three Cornered Moon," "Royal Family," Centenary Pageant.



Football, 1, 2; Tennis; Sigma Nu.



WILLIAM PLEWS BALDWIN, Jr.

Bring 'em back alive! With this motto Bill rushes out of Prof. Houghton's biology lab to scour the Del-Mar-Va Peninsula for rare insects, reptiles, etc. At the same time, he notes bird specimens and collects a mass of plant-life data. When summer comes, Bill takes a "vacation." He goes down to the Chesapeake to look for insects, study birds, and collect plants. Gosh, can't Nature keep a secret, Bill?

Soccer, 1; Glee Club, 2.



Secretary Freshman Class; Class Football, 1; Interfraternity Baseball, 2, 3; Vice-President E. E. Club; Blue Hen Staff, 3; Sigma Phi Epsilon.



A downstater? No, but with that genial and unassuming nature of his who would think that Doc wasn't. The horses have been trying for a long while to get a rise out of Doc, but, after almost every rise, he only smiles and starts talking about the next race.

MERRITT BURKE, Jr.

"Ducky" is a campus smoothy. He occasionally stops off at the engineering building on his frequent escapades to the lower end of the campus. Even though he spends much time at the southern extremity of our fair campus, his scholastic average still remains at a high level.

CHARLES CRAIG CANNON



TIMOTHY JOHN CAREY, Jr.

The sun-kissed lad from Ocean City, a place that must be paradise—ask “Bull.” “Bull” is the first of the athletic Careys to have migrated to the “A. C.” It is hard to say whether John is a resident-student or a commuter from Chester. This record breaking machine has been one of the main cogs in the success of Delaware’s athletic teams. “Bull” is also quite a creative genius, known for the famous “Carey method.”

Varsity Football, 1, 2, 3; Varsity Swimming, 1, 2, 3; Varsity Track, 1, 2, Captain 3; Sophomore Committee; Blue Key.



Football, 1, 2, 3; J. V. Basketball, 1, 2, 3; Ag Club.



Our genial “Ag” friend can tell you all about bacteriological culture media. As Dr. Palmer’s lab. assistant, he has become quite a proficient *a media* mixer and somewhat of a veterinarian. Ed has been out for football constantly since his arrival. He gained national fame when he “hitch-hiked” to West Point to be with the boys for the Army game.

EDWIN GILBERT CROCKER

GORDON WARREN CHESSE

To “Chess” much credit must be given for his success in making stage sets for play productions. His ability as an architect can not be over-estimated; his creativeness is based upon the feeling for a deeper meaning of art which portrays truth and beauty. “Chess” is the big-hearted friend of the “A. C.” boys; he is the balance wheel of harmony among a group of egocentric athletes. Never gripes, always willing to do his share and the other fellow’s, too, and he has a good word for everyone. Chess, an athlete, an artist, a scholar, and a gentleman.



Football, 2, 3; Class Football, 1, 2; Class Track, 1, 2; Footlights Club, 2, 3; Review, 1, 2; Freshman Manager Basketball, 1; Sigma Nu.



Varsity Swimming, 1, 2, 3; Varsity Track, 2; A. S. M. E., 2, Vice-President, 3; Vice-President Junior Class; President Blue Key, 3; Interfraternity Relay, 1, 2; Sophomore Committee; R. O. T. C., 1, 2, 3; Chairman Junior Prom Committee; Sigma Phi Epsilon.

“Bill” is one of the outstanding men on the campus. His accomplishments as a natator are noteworthy. He is a fine all round fellow and his friends and acquaintances extend beyond the limits of his fraternity of which he is president his senior year.

WILLIAM MILLER CROES



ROBERT EMMETT CURTIN, Jr.

Bob has not been at Delaware long, but in the time he has been here he has been quite active in several activities, and has acquired quite a few friends. Ask Bob what he thinks about the social system.

EUGENE ANTHONY DelleDONNE

"Our Delly goes to college" is a saying that has stuck with Gene throughout his college career. He has won a wide circle of friends while here at Delaware because of his genial disposition.

Class Historian, 1, 2, 3; Debating Team, 2; Interfraternity Plays, 3, 4; Publicity Manager Football, 3; Editor Review, 3; Humanist, 3.



R. O. T. C., 1, 2, 3; Football Manager, 1, 2, 3; Interfraternity Baseball; Interfraternity Basketball; Interfraternity Play; Sigma Phi Epsilon.

Swimming Manager, 1; Swimming Team, 2; Interfraternity Plays, 2; Interfraternity Swimming 2; Junior Prom Committee, 3; Sigma Nu.



R. O. T. C., 1, 2, 3; Kappa Alpha.

Here we have a rare thing—a great intellect seasoned with a keen wit. The intellect is expended in learning chemical and mathematical formulas backwards and forward. The wit is exhibited when Dinny sits himself behind a beer mug. When Dineen leaves M. I. T., where he plans to study, we expect big things of him.

FRANCIS HENRY DINEEN

Drap and his pipe are familiar sights on the campus. He is a determined fellow who knows where he is heading and intends to get there. An engineer, he does his work well and with zeal.

HOWARD HENRY DRAPER, Jr.



SAMUEL DARLINGTON MOODY, Jr.

"Those Democrats down in Washington sure are putting this country in a hole." There aren't any Democrats down at Bear, no sir, nothing but good Republicans like this very manly fellow whose heart leaps with warmth and friendship when you call him "Bear."

FRANK ALPHEUS ELLIOTT, Jr.

Frankie—our buddy. He spends so much time making life enjoyable for others with his high spirits and ready wit that he has to take quite a few slams from his "profs" without making any come-back. Here of late he has become a source of much speculation. Why the solitary pilgrimages to Philadelphia?

R. O. T. C.



Track; Varsity Soccer; Phi Kappa Tau.



Soccer, 1, 2, 3.



Varsity Soccer, 1, 3;
Varsity Tennis, 3;
Sigma Nu.

Ladies and Gentlemen, meet the most unassuming "run around," Easy! Always ready for a good time, he finds plenty of companions for his carefree existence up Theta Chi way. But aside from this sort of thing, we have always found him to be a hard worker and a conscientious student.

This serious pre-med from Hanover is the campus polar bear; he delights in zero weather. Bill is cold temperamentally, too, and is difficult to know intimately. But the effort to understand his eccentricities is worthwhile, for once known Bill is a good friend and a good tennis partner.

DAVID RANDOLPH EASTBURN, Jr.

WILLIAM FOX ECKBERT



PHILIP JOSEPH FACCILO

Noticed Phil lately? Smokes big cigars, takes all Doc Gould's courses, and scans financial sheets. We expected Facciolo to be a lawyer; but, alas, he seems headed for Wall Street. Well, you've worked hard, Phil, and you are a man among us. Your stock is bound to rise!

PAUL THOMPSON GRIFFITH

In his Junior year Paul went "college" on the boys so far in fact that he commenced giving dancing lessons. Little wonder, then, that he was the main attraction at the Junior Prom. The Newark lad from Prospect Park is some man. Indeed, he smokes a cigar every Saturday night. Isn't so, Griff?



Class Football, 1, 2;
Assistant Manager
Basketball, 3; R. O.
T. C., 1, 2, 3; Track,
2; Sigma Nu.



Track; Varsity Football;
Sigma Nu.

R. O. T. C.; Interfraternity
Baseball, 2, 3;
Sigma Phi Epsilon.

On the gridiron, look for No. 7 going off tackle for a ten yard gain. On the campus, look for the broadest grin in sight. They are the easiest ways to find Glover. Jack, our dashing football captain, is a natural wit, a great practical jokester, one of the most popular men on the campus, and a serious student—at times.

JOHN SOURSBY GLOVER

Emmor is a quiet, hardworking boy apparently, but have you gone places with him? If you haven't, try it some time—you'll find that Emmor can play too. Emmor doesn't let play interfere with his aim in life, though, whatever it is—maybe it is to become a good provider for—well, you know.

WALTER EMMOR GREGG, Jr.



WILLIAM GARRETT HUME

This big bundle of personality is "our" Tubby, famed for his great success in organizing the Junior Prom on a sound financial basis, a new thing at Delaware. Aside from holding class responsibilities, Hume manages to play varsity soccer and devote a major portion of his life to love.

Varsity Football, 1; Class Football, 1, 2; Varsity Soccer, 2, 3, Captain 4; Varsity Tennis, 2; Varsity Swimming, 3; Interfraternity Swimming; Interfraternity Basketball; Interfraternity Baseball; R. O. T. C. Band, 1, 2; Student Council, 3; President Junior Class, 3; Blue Key, 3; Interfraternity Council, 3; Sigma Nu.



JAMES HORATIO HALLETT, Jr.

Jim was a prize scholar at Wilmington High and he has maintained his record here at Delaware. He is a ranking chemical and a Tau Beta Pi. But Jim knows that all work makes a dull boy, hence he recreates by accumulating a thorough knowledge of dance bands and of women.

Basketball Manager, 1; Review Staff, 1; Band, 1, 2; Soccer Manager, 2, 3; Tau Beta Pi; Sigma Nu.



A. S. C. E., 1, 2, 3.



President Freshman Class; President Sophomore Committee; Interfraternity Swimming, 1; Class Swimming, 1; Varsity Swimming, 2, 3; College Hour Committee, 3; Cast "Death Takes a Holiday"; Blue Key, 3; Junior Prom Committee, 3; A. S. M. E., 2; Secretary, 3; Student Council, 1, 2; Treasurer, 3; R. O. T. C., 1, 2, 3; Blue Hen Staff, 3; Sigma Phi Epsilon.



A boy and a girl, and a moon, and June-ah-h-h, me! Yes, Dick's in love, practically a married man. It isn't hard to picture this serious, studious "civil" as the head of a family. May we drop around for dinner some night, Dick?

"Chobbles" started off his college career by being elected chairman of his class, and has continued his extra-curricular activities through a wide range, having been on the Student Council for four years. His scholastic standing ranks him as an honor man. Jack's lack of hair is more than compensated for by his school girl complexion.

RICHARD ADAM HABER

JACK PAUL HARTMANN



ALVIN ISADORE HANDLOFF

Where else can one find such worthy characteristics as intelligence and dignity embellished by a pleasing personality. A man of high intellect, prominent on the campus as a writer, actor, and good fellow, he has been rewarded by his appointment as editor-in-chief of the *Review*. Sincere in his work, with his friends, and, above all, with himself, he is certain to succeed in any profession he wishes to follow.

Editor-in-Chief, "The Review," 4; Freshman Handbook, Assistant Editor, 3, Editor, 4; President Sigma Tau Phi, 4; Student Council, Secretary, 3, 4; Footballs Club, Secretary, 3; E 52 Players, 4; Interfraternity Plays, 1, 2, 3; Cast "Royal Family," "Green Cockatoo"; Freshman Banquet Committee, 1; Interfraternity Council, 4; Sigma Tau Phi.



Review, 1, 2, 3; Basketball, 1; Swimming, 3; Interfraternity Play,



WILLIAM TOWNSEND JAMES

If one is fortunate enough to penetrate the quiet and aloof air that characterizes Bill James, he discovers one of the most congenial fellows on the campus. Bill is the essence of friendly cooperation. To his fraternity brothers, this "Will Rogers" of the Sigma Nu is better known as "Putt-Putt."

Manager Baseball, 1, 2, 3; Sigma Nu.



J. V. Swimming, 1; A. S. C. E., 3; Apprentice Players, 3; Glee Club, 3.



Aside from dabbling in dramatics, the *Review*, basketball and swimming, Sam has found time to make a host of friends for himself at both North and South ends. His gentlemanly conduct coupled with a freshening personality and a keen mind is only the more enhanced by his ability as a bartender. Best shot: Sam whispering sweet nothings into her ear under the moonlight.

SAMUEL NAUM KAHN

Only a combination of Arden and Wilmington could produce this rarity, an engineer with cultural aspirations, a "civil" who plays in Shakespeare repertoire. A math whig and a "fine fellow," Earl is a sun-worshiper whose mood varies in direct proportion to the changes in the weather.

EARL DANIEL KRAPF



FREDERICK STONE KELLEY

Energy and dispatch is Fred's slogan. He not only does a lot of work but doesn't waste any time doing it. Fred knows what he wants and is going after it.

Football Manager, 1, 2; Interfraternity Plays, 2; Interfraternity Basketball, Manager; Student Council, 3, 4, Secretary, 4; Interfraternity Baseball, 2.



"Pirates," 2; Glee Club, 2, President; Baseball, 1, 2; Treasurer Junior Class; Junior Prom Committee; R. O. T. C., 1, 2, 3; Blue Key; Sigma Phi Epsilon.



THOMAS WILLEY KEITHLEY, Jr.

T. Willie is a fine actor and a Mitchell Hall favorite. Like all actors, he is a highly individualized personality. To preserve his individualism Keithley reads all types of literature, attends Curtis concerts, delves into art, and goes generally intellectual. He naturally disdains the boring routine of his curriculum and wards off professors with a sophisticated cynicism and a keen wit. Yes, only one Willie!



Footlights Club, 1, 2, 3; Alpha Psi Omega, 2, 3; E 52; Sigma Nu.



"Jim" has become a very proficient orchestra leader with somewhat of a Crosby complex. His pleasant voice has won many ardent admirers at the lower end of the campus. Besides being a commuter and leading his orchestra Jim has gone through school with a very good scholastic record.

JAMES WOODRUFF KELLEY

"My Gawd Ledley!" gasps the locker-room gang good-naturedly when Bob, in true Johnsonian vein, expounds upon some obscure point. But Bob generally wins the day, for his audience must succumb to incontestable facts which only chemical engineers can advance. Next to alkalis and acids Ledley likes—well, that mustache says, *cherchez la femme*.

ROBERT EDWARD LEDLEY



ARTHUR GERALD LESSEY

The customary worries of a pre-med have not sufficed to erase the pleasant smile or the equally amiable freckles from Gerald's face. Serious and hard-working, a graduate of du Pont High, he is one who will make his way in the world.

Glee Club, 2, 3; Track, 2; Swimming, 2.



Review 2; Blue Hen, 3; German Club, 3; Student Council 3.



EDMUND NICHOLS LIVINGSTON

A student and good fellow, Ed knows how to enjoy life as well as work. Many stories are told about Ed as an entertainer, as far as work goes—well, ask the Profs.

Soccer, 3; Band, 1, 2.



Soccer, 1, 2, 3; Interfraternity Baseball, 1, 2; Interfraternity Basketball, 1, 2; Interfraternity Plays, 1; Sigma Nu.



Someone called Johnny an encyclopedia; really, he is a Congressional Library with interests that run the gamut of events. Little wonder, then, that he has won the awards since entering Delaware. But this is no bookworm. Hence, if you need a fourth at bridge, a bit of repartee, a laugh, a song, or a friend—call, "Johnny!"

JOHN ANDREW MUNROE

Lewes is famed for its production of genial natures. Ed, for instance, ought to be a politician. Professors, co-eds, colored bootblacks—all melt before his smile and pleasant voice. Even though he plays soccer, we venture Ed has no enemies. But wait—don't you think, Ed, that your singing may have alienated someone?

HARRY EDWARD MAULL



EVERETT CLAY MATTHEWS

Eddie came to us from W. C. I., but was originally a Dover High lad. From a rather quiet chap, afraid of the girls, he rapidly changed to quite a jiggle-boy. Many are the fair hearts he has left tattered and torn. But not being too much of a run-around by nature, he managed our baseball team and was quite a fraternity basketball star. Here's luck, buddy!

Baseball Manager; Secretary of Class, 4; Soccer, 2; Review Staff, 2, 3; Economics Club; Interfraternity Basketball, 1, 2, 3, 4; Interfraternity Baseball, 2, 3, 4; Inter-class Football, 2; Theta Chi.



Varsity Swimming, 1, 2, 3; Interfraternity Council, 2, 3; Blue Key, 3; Interfraternity Swimming, 2; Interfraternity Baseball, 2.



ALICK MURRAY

As quiet and self-effacing a fellow as you can find—that's Murray. He came to Delaware an accomplished foilsman. During his entire time here he has had a secure berth on the fencing team. Al blazed into the headlines this year when his room got too hot for him.



A. S. C. E.; Fencing, 2, 3, 4; Soccer, 3.



Mac seems like an easy-going fellow, but his pleasant manner and quiet ways hide a great determination. If you don't believe that just think back over Mac's diving activities—long and gangling it seemed as if he would never make a diver, but Mac showed them.

Pardon us Earnie if we haven't spelt your name right, but I am sure I saw you spell it this way once. Earnie scares people sometimes by his tough attitude, but he really isn't tough, in fact Earnie is a very generous and pleasant fellow. Earnie has worked awfully hard for his education and certainly deserves success.

JAMES AUSTIN McCULLOUGH

ERNEST HERBERT MARTYN



IRVIN LESLIE MALCOLM

"The Malc" affects clay pipes and earmuffs. He is individual, if anything. Possessing a most singular brand of laughter, he tries valiantly to match it with equally singular wit—and sometimes succeeds. Irv is an accomplished actor, a connoisseur of great literature (and rare tales), and a boon companion.

Football Manager;
Alpha Psi Omega;
Footlights Club; E 52;
R. O. T. C.



WILLIAM JAMES MEARNS

Back in Wilmington High we knew Bill as an amateur radio expert, a good photographer, and a pleasing tenor. Bill still sings, but his chief joy is in solving the problems of an embryo electrical engineer. If this lad adds a year at M. I. T. to his record we advise Steinmetz to beware, for knowledge and "love" produce scientific wizards!

Glee Club, 2, 3; Band,
1, 2; Radio Club, 1;
Rifle Team, 1; President
E. E. Club.



Agriculture Club, 1, 2,
3, 4, President, 4;
Editor Aggie News, 2,
3; Footlights Club, 1,
2, 3, 4; Interfraternity
Track, 1, 2, 3; Inter-
fraternity Plays, 4;
Student Council, 2;
Phi Kappa Tau.



A. S. C. E.; Inter-
fraternity Basketball,
2, 3; Interfraternity
Baseball, 2, 3; Class
Football, 2, 3; J. V.
Baseball, 1; Sigma
Nu.



A man of very few words, but when he speaks every one listens. In practically no time at all after leaving the depths of Wolf Hall and the restraining hand of Dean McCue he will have made a big alfalfa patch out of Henry Clay and Squirrel Run. Best of luck, Johnny.

JOHN MONTGOMERY, Jr.

Walt takes mechanical engineering so that he may develop a precision that will enable him to excel in his hobbies. Hence, when he plays bridge, shoots pool, bowls, bets the "nags," or drives a car—Walt works mechanically. We wonder, Walt, did you make love—mechanically?

WALTER BAMFORD McKENDRICK, Jr.



HENRY PERCIVAL MARSHALL, Jr.

"Perce" is one of the ambassadors from Lewes. He is a "dyed-in-the-wool" Sussex County Democrat. When he isn't arguing about politics or looking for a political job, he is showing some friend how to play pinochle. His one ambition is to make Delaware safe for Democrats. He is a generous soul, whose like one seldom meets.

JOHN WHITE MATHEWS

Johnny is an engineer who seems to get pretty good marks with very little work—they are few and far between. He came to Delaware from one of the better prep schools and gave the boys some pointers on how a prep school boy should dress and act.

Phi Kappa Tau.



R. O. T. C.; Band.

Football, 1, 2, 3;
Sigma Nu.

"Now that reminds me . . ." doffing his R. O. T. C. cap, setting aside his drum, and lighting one of his countless pipes, smiling Sgt. Pancoast commences one of his famous stories *à la Woolcott*. Aside from being a raconteur, Harry is a chemistry major, and one of the finest fellows on the campus. Smile Harry!

George is the fiery reformer of our educational system. He has good ideas even if a bit theoretical and impractical. But don't be mistaken, reformers often have pleasing personalities. When not expounding some complex theory of education, "Rec" is found on Frazer Field with the other phys-eds or coaxing harmony from the old piano in the Lounge.

HARRY RALPH PANCOAST

GEORGE MORTIMER RECORDS



FRANCIS MARION ROGERS

Rogers is one of those pleasant fellows hiding a lot of determination under a pleasing smile. A track and soccer man, he made up what he lacked in ability with fight and became a fine participant.

Track, 2, 3; Soccer, 2.



Treasurer Freshman Committee; A. S. M. E., 2; Treasurer, 3; Interfraternity Swimming, 2; Tau Beta Pi, 3; Sigma Phi Epsilon.



ERNEST ANDREW DISABATINO

"Sabby" is the answer to any difficult problem. This dynamic personality is a staunch advocate of exactness, and is well fortified with analytical powers. Beware of the ever impending temperamental outbursts. Confidence will make him the engineer he seeks to be. Rest assured that your fellow men will see your name on all the walks of life.



Manager of Track, 3; Blue Key, 3; Interfraternity Council, 3; A. S. C. E., 1, 2, 3; Interfraternity Basketball, 1, 2, 3, 4; Baseball, 2, 3, 4; Track, 2, 3, 4; Sigma Phi Epsilon.



Soccer, 2, 3; R. O. T. C., 1, 2, 3; Glee Club, 2, 3; Basketball Manager, 1, 2; Theta Chi.

"Joe" is a product of Tower Hill, and has done very well by himself at Delaware maintaining a 3.00 average in mechanical engineering. His social ambitions have blossomed forth and include a wide circle of friends of the fair sex—even debutantes.

JOSEPH STUART, III

Hail the lad from Floral Park, N. Y.—And what a mixture: Now genial, then sullen, now erratic, then interesting, now dogmatic, then judicious; yet popular among the fellows, popular among the ladies, and a good student. The esteem in which he is held by his fellow Theta Chis is evidenced by their making him President-elect of his fraternity.

HUGH LESLIE STEWART, Jr.



JOSEPH HARLEY SAVILLE, Jr.

The "KID From Spain" is long and lean. He arrived from "Sallies" the polished valedictorian of his class. Joe is well liked by all of his brothers and has proved to be an active participant in interfraternity and campus activities. He is a true follower of the sport of kings.

JOHN WESLEY SCOTTON

Johnny hails from Easton, Md.—And is he a smooth gent! If you don't believe this, just ask him. Knows more "dates;" has more "invites" to parties and dances; always goes with the best girls; and yet through it all lives a very unemotional life. Among his fraternity brothers, he is known as "Scoffer Scotton."

Interfraternity Council, 3; Athenaeon Society; Glee Club; Newman Club; Sigma Phi Epsilon.



Tennis Manager, 1, 2, 3; Glee Club, 2; Interfraternity Baseball, 2; Soccer, 1; Theta Chi.



Track; Sigma Nu.



What a trim and well-dressed man we have here! Although not a Phi Kappa Phi, Jim is a very bright fellow and knows, among other things, the whole catalogue of bridge rules. In brief, he is a very likable chap and now that he has decided to become a doctor is becoming a real student.

Presenting Hank Schilling, at once Delaware's most skeptical and most gullible man. He never doubts that Lamb wrote "Gunga Din," but he questions the spelling. Flaxen hair and huge expansive grin belie the playfulness that makes him the terror of the locker room, expert wielder of orange peel.

HOWARD NEHEMIAH STAYTON, Jr.

HENRY GEORGE SCHILLING



ROGER BERNARD THOMAS

This du Pont High graduate is another of those earnest and hard-working pre-meds. After three years of commuting from Richardson Park, he has progressed to the rank of assistant driver for Walt McKendrick. A capable fellow, Roger is a friendly and very likable chap.

Bar & Cleft Club, 2, 3; Band, 1, 2, 3; Centenary Pageant, 2.



EDWIN WILLIAM THOMPSON

"Three-letter Ed" is our big athletic importation from Pitt. Ed's one hundred and ninety pounds are most at ease when crashing to a touchdown but this doesn't prevent Thompson from scoring a few points at W. C. D. In fact, we have here a cosmopolitan gentleman with social connections throughout the nation. Touchdown, Ed?

Varsity Football, 1, 2, Captain, 3; Basketball, 1, 2, 3; Baseball, 1, 2, 3; Track, 1, 2, 3; Class President, 2; Student Council, 2; Sigma Nu.



Student Council, 2, 3; Sophomore Committee; Phi Kappa Tau.



Ag Club.

Meet a gentleman of the old school. In spite of this, Van seems to make out O. K. with the ladies. We wonder if it is because we never know exactly what happens to him and his fair companion at intermissions. There are some rumors, but it is impossible to verify them.

SAMUEL NEWBOLD vanTRUMP, Jr.

Truitt when he came to Delaware knew all the ropes here for his brother, who was here before him, had instructed him well. This knowledge and his love of taking part in practical jokes have resulted in many laughs for the boys.

ALTON SAMUEL TRUITT



JOSEPH SHERMAN TANNEN

Josh's greatest claim to fame is an "A" in Accounting that he holds up to all to show that it can be done. Naturally industrious, he has a corner on the labor market holding down at least three jobs besides going to school very regularly. His apparent heartiness in all things is merely indicative of the zest he enjoys in living. A regular fellow who will give all within his power once convinced of its rightfulness.

Review Staff, 1, 2, 3;
Bar and Clef, 2; Interfraternity Relays, 1;
Interfraternity Plays, 2; Sigma Tau Phi.



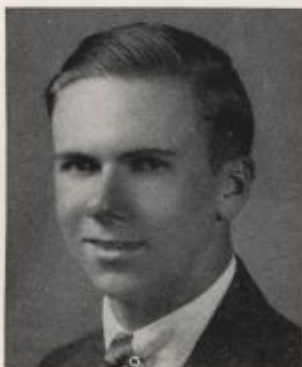
CHAUNCEY ANDERSON WHEELLESS

Wheelless is a native Newarker and it was on the local courts that he learned so well his sport—tennis. Skip is also adept at miniature tennis or ping-pong. Lest we be misled, Skip is a social lion also, but because of his proximity to W. C. D. finds it advisable to do his roaring on the Eastern Shore.

Varsity Tennis, 2;
Class Football, 1; Interfraternity Baseball, 1; Interfraternity Basketball, 1; Sigma Nu.



Varsity Track, 1; Agriculture Club, 1, 2, Secretary, 3; Blue Key, 3; Junior Prom Committee, 3; Student Council, 2, 3; Interfraternity Basketball, 1, 2, 3; Interfraternity Baseball, 1, 2; Interfraternity Play, 3; Interfraternity Relay, 1, 2; President Kappa Alpha.



Football, 3; Basketball, 2, 3; Golf, 1, 2, 3; Track, 3; Blue Key, 1; Sigma Nu.

Ralph is a down state fellow who is well liked by everyone. A prominent man in his fraternity and on the campus, Ralph is well liked by all. He is one of those pleasant fellows, whom it seems nothing could ever change—which is encouraging, for fellows like Ralph are scarce.

Teedy plays practically any sport well enough to make the team; if he were serious, we believe he would star in several fields. As it is, Teedy's forte is golf; here he is a master. His versatility is not confined to Frazer Field, as any young lady may testify. Not much time for books, you see. But don't worry; this chap's personality predicts business success.

RALPH LEE WALSON

STEPHEN MITCHELL WILSON, Jr.



CHARLES PEYTON WITSIL, Jr.

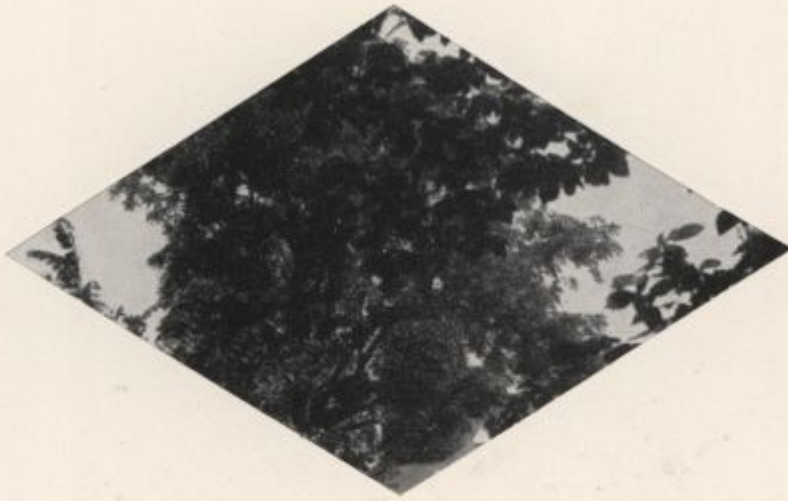
Charlie is just another of those tall, broad shouldered engineers. He is always friendly and willing to give a helping hand to the needy. He is a good salesman, painter (auto) and swimmer. Best wishes to you for your future, Charlie.

HENRY PRICE WALKER

An electrical engineer? Yes, but this likable Adonis from Wilmington is also a general handyman, a gentleman farmer, an amateur zoologist, and a reader of good books who can boast the perusal of *Anthony Adverse* in toto. To boot, Hank is W. C. D.'s best argument for a co-ed school. Shake, Hank!

Freshman Manager
Swimming; Swimming
Team, 2, 3; Track, 2;
Treasurer Sophomore
Class; Intramural
Swimming, 2; Inter-
fraternity Swimming
Team, 2; Theta Chi.





**S
O
P
H
O
M
O
R
E
S**

ateur
books who can
Adverse in toto.
D.'s best argument to
Hank!



PURNELL HALL

PURNELL HALL, built as a private home and purchased from the Evans family, has served a varied existence in the services of the University. It has been used successively as a Chapter House for the Kappa Alpha Fraternity, as a home for the Y. M. C. A., as a General Library, and is used now as the offices of the departments of English and History. During 1917 and 1918 when the University was turned into a veritable "shop of war", Purnell Hall served as the headquarters of the Local Draft Board for New Castle County.

Purnell Hall was named for William Henry Purnell, a graduate of the class of 1846 and president of the College from 1870 to 1885. Doctor Purnell came to the presidency of the College from an active public and military life. He had gained great renown as Colonel of the Purnell Legion which he organized early in the Civil War.





CLASS OF 1937

CLASS OFFICERS

Jack Hodgson, *President*
 William Black, *Vice-President*
 Daniel V. Stoll, *Secretary*
 William Killough, *Treasurer*

STUDENT COUNCIL

J. David Wheeler
 Alfred Parker
 George Pierre
 Jack Geist
 Jack Hodgson
 David Salsburg
 Homer Tanner

ATHLETIC COUNCIL

Alfred Parker

SOPHOMORE CLASS ROLL

Argo, Russell Loffland	A. & S.	Wilmington
Babiarz, John Edward	A. & S.	Wilmington
Bannister, Ernest Lee	A. & S.	Liberty Grove, Md.
Barab, Robert Charles	A. & S.	Wilmington
Barto, Morris Joseph	M. E.	Hockessin
Benson, Wilmer Kersey, Jr.	E. E.	Wyoming
Biddle, Edward Spencer	A. & S.	Newark
Black, John William	M. E.	Wilmington
Bunstein, Henry LeVan	A. & S.	Milford
Cannon, John Gum	M. E.	Lewes
Cheney, George Robert, Jr.	A. & S.	Wilmington
Chrzanowski, John Anthony	A. & S.	Wilmington
Clymer, Benjamin Franklin, Jr.	A. & S.	Wilmington
Cooch, Thomas	E. E.	Cooch's Bridge
Crerand, John Patrick	M. E.	Claymont
Crompton, Charles Sentman	A. & S.	St. Georges
Davenport, Ralph Turton	A. & S.	Tuckahoe, N. Y.
Davidson, James Edward	A. & S.	Wilmington
Dillon, James Francis	A. & S.	Wilmington
Donalson, Drexel Schick	C. E.	Wilmington
Dunlap, Amos Hambleton	A. & S.	Wilmington
DuRoss, Willard Edward	A. & S.	Wilmington
Edge, James Edward	A. & S.	Wilmington
Ely, Thaddeus Blair, Jr.	A. & S.	Wilmington
Euster, Edgar E.	A. & S.	Wilmington
Faivre, Victor William	A. & S.	Wilmington
Flower, Louis Frederick	A. & S.	Wilmington
Foster, Thomas Albright	A. & S.	Newark
Gallagher, Hugh Francis, Jr.	M. E.	Newark
Geist, John Charles	E. E.	Newark
Geller, Max Allan	A. & S.	Wilmington
Gloetzner, Henry James	A. & S.	Wilmington
Green, John Lawrence, Jr.	E. E.	Wilmington
Greenberg, Bernard Isaac	A. & S.	Wilmington
Greenwood, John Robert, III	A. & S.	Wilmington
Heather, Arthur Joseph	A. & S.	New Castle
Hill, Thomas Sparks	A. & S.	Wilmington
Hills, Benjamin Oscar, Jr.	A. & S.	Wilmington
Hirshout, David	A. & S.	Wilmington
Hoadley, Alfred Damon	Agr.	Swarthmore, Pa.
Hodgson, John Andrew	A. & S.	Wilmington
Hoffecker, Wilmer Andrew	Ch. E.	Philadelphia, Pa.
Horner, Austin Vance	A. & S.	Wilmington
Jackson, Roland Pusey	A. & S.	Newark
Jamison, Robert John	A. & S.	Wilmington
Joseph, Franklin Arthur	E. E.	Rehoboth Beach
Killough, William John	Agr.	Upper Darby, Pa.
King, Donald Lee	Agr.	Laurel
Laskaris, Thomas	Agr.	Newark
Layman, Allan Henry	M. E.	Wilmington
Lee, Daniel Preston	A. & S.	Wilmington
Leviton, Herbert Stanton	Ch. E.	Wilmington

SOPHOMORE CLASS ROLL

Lloyd, William Albert	E. E.	Wilmington
Lomax, Ernest Samuel	M. E.	Newark
MacBride, James Hugh	A. & S.	Wilmington
Manns, Alison Franklin	A. & S.	Newark
Marvel, William Harold	A. & S.	Houston
Moore, William Evans, Jr.	A. & S.	Wilmington
Murphy, Hugh James, Jr.	A. & S.	Wilmington
Nichols, Jayne Frank, Jr.	M. E.	Wilmington
Nichols, Thomas Marston, Jr.	A. & S.	Elsmere
Noonan, William Francis	A. & S.	Wilmington
Oesterheld, Edwin Herman	A. & S.	Bronxville, N. Y.
Oldman, John	A. & S.	Wilmington
Omenn, Leonard	A. & S.	Wilmington
Owings, Roger Underwood	M. E.	Newport
Parker, Albert Francis	A. & S.	Wilmington
Pennock, Thomas	A. & S.	Wilmington
Perkins, Joseph Hinchliffe, Jr.	A. & S.	Swarthmore, Pa.
Pierre, George Henry, Jr.	A. & S.	Lansdowne, Pa.
Preston, Howard Kent, Jr.	C. E.	Newark
Rich, Harry Albert	A. & S.	Arden
Sachs, Bernard	A. & S.	Wilmington
Scannell, Joseph John	A. & S.	Wilmington
Scharp, Charles Gordon	A. & S.	Wilmington
Schulman, Sidney	A. & S.	Wilmington
Schultz, Richard Lewis	A. & S.	Trenton, N. J.
Scott, Richard Hunterson	M. E.	Gordon Heights
Seitz, Collins Jacques	A. & S.	Wilmington
Smith, James George	M. E.	Delaware City
Smith, Milton Edwin	A. & S.	Dover
Spiller, George Schnair	A. & S.	Wilmington
Stanton, Russell Crom	C. E.	Wilmington
Stoll, Daniel Vincent	A. & S.	Newark
Stradley, George Cleland, Jr.	M. E.	Wilmington
Surratt, Grover Tennyson	A. & S.	Newark
Sutton, James Nuttall	A. & S.	St. Georges
Taggart, William John, Jr.	A. & S.	Wilmington
Tanner, Homer Archibald	A. & S.	Marshallton
Tunnell, John Shroy	Ch. E.	Georgetown
Vapaa, George Kalervo	Agr.	Wilmington
Wallis, Severn Teackle, III	A. & S.	North East, Md.
Warren, Frank Elwood	C. E.	Wyoming
Watson, Harry Croes	A. & S.	Wilmington
Weisberg, Harold	A. & S.	Wilmington
Wetherall, Robert	C. E.	Wilmington
Wheeler, John David, Jr.	A. & S.	Wilmington
White, Henry Allen, Jr.	A. & S.	Wilmington
White, Henry Newton, Jr.	A. & S.	Wilmington
Wiener, Jack Allen	A. & S.	Wilmington
Wilson, William John	A. & S.	Wilmington
Wright, James Earl	Agr.	Newark
Yalisove, Irving Leon	A. & S.	Wilmington
Young, Alfred Enoch	Agr.	Wilmington

**F
R
E
S
H
M
E
N**



CLASS OF 1938

Fritz Kane, *Chairman*

ATHLETIC COUNCIL

Walter F. Merscher

FRESHMAN CLASS ROLL

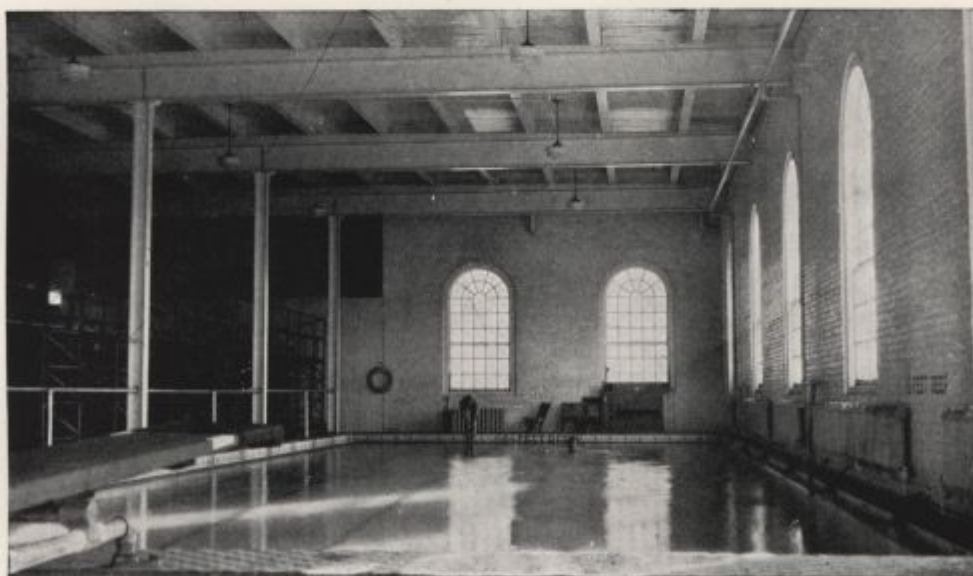
Alden, John Wiley, Jr.	A. & S.	Wilmington
Anderson, Robert Houghton	A. & S.	Wilmington
Arnold, Samuel Morgan	A. & S.	Newark
Augustynowicz, Sylvester Anthony	A. & S.	Wilmington
Backus, William Carlton, Jr.	Ch. E.	Wilmington
Baldwin, Elmer William, Jr.	M. E.	Wilmington
Baltz, John Daniel	Agr.	Honey Brook, Pa.
Bant, William Pearson	A. & S.	Wilmington
Berman, Theodore William	A. & S.	Wilmington
Brown, Charles Cahall	C. E.	Wyoming
Brown, Richard Montgomery	A. & S.	Bear
Bruno, Paul Joseph	C. E.	Wilmington
Bumstead, Edgar John	E. E.	Delaware City
Button, Daniel Evan	A. & S.	Newport
Carey, Fenton Edwin	A. & S.	Ocean City, N. J.
Carey, Lewis Zeigler	A. & S.	Ocean City, N. J.
Carpenter, Randall Hamilton	A. & S.	Wilmington
Combs, Henry Reed	A. & S.	Middletown
Cooke, George William	A. & S.	Wilmington
Cooke, Robert Mayberry	C. E.	Wilmington
Cornelius, Herbert Harrison	A. & S.	Wilmington
Corrigan, John Jewell	E. E.	Holly Oak
Cramer, Kenneth Clinton	C. E.	Wilmington
Crocker, Charles David	Agr.	Frankford
Curren, Edward Flinn	Ch. E.	Wilmington
Davidson, Ernest Alfred	C. E.	New Castle
Day, Charles Edward, Jr.	E. E.	North East, Md.
Deering, John Edgar	A. & S.	Wilmington
Donoho, Christopher Royer	A. & S.	Merchantville, N. J.
Doordan, Bernard Patrick	A. & S.	Newark
Drozov, Olaf Alexander	Agr.	Ocean City, N. J.
Dunlap, Howard Francis	Agr.	Newark
Eckstorm, Edward Webster	A. & S.	Milford
Ehm, Robert Henry	M. E.	Wilmington
Elliott, Robert John	A. & S.	Wilmington
Farra, Harrison Joseph, Jr.	M. E.	Wilmington
Fischer, Irving Robert	A. & S.	Wilmington
Fletcher, William	A. & S.	Newark
Flickinger, Herbert Heiss	Agr.	Wilmington
Flink, Harold Gustaf	C. E.	Wilmington
Govatos, Theodore Peter	Ch. E.	Milford
Gravell, Thomas Lawrence, Jr.	Agr.	Wilmington
Grayson, Samuel Alexander	A. & S.	Wilmington
Guthrie, James Nesbitt	E. E.	Wilmington
Harkins, Eugene Francis	A. & S.	Wilmington
Harris, Lewis	A. & S.	Wilmington
Hearn, John Bayard, Jr.	A. & S.	Wilmington
Hicks, Norman Clarence	A. & S.	Middletown
Howard, Luther Martin	M. E.	Wilmington
Hull, James Henry, Jr.	M. E.	Wilmington
Hum, Chang Lung	C. E.	Newark
Jackson, Edward Farrell, Jr.	C. E.	Wyoming
Jackson, Ernest Earle, Jr.	E. E.	Wilmington

FRESHMAN CLASS ROLL

Jacobs, Wilbur Lyman	A. & S.	Harrington
Jester, James Baum	M. E.	Newark
Johnson, Tilghman Edward	A. & S.	Frankford
Kee, William Burge, Jr.	Ch. E.	New Castle
Keene, Milton Henry	A. & S.	Wilmington
Kenworthy, Charles William	A. & S.	Wilmington
Kozinski, David	A. & S.	Wilmington
Lafferty, John Edward Harrison	Agr.	Cheswold
Lattin, Clark Parker, Jr.	E. E.	Yonkers, N. Y.
Leary, Harold Paul	A. & S.	Roxana
Lewis, Joseph George	E. E.	Newark
Lipstein, Sigmund Morton	A. & S.	Wilmington
Lofink, Joseph John	E. E.	Wilmington
Long, Armel Worthington	A. & S.	Selbyville
Lott, Oscar Charles	A. & S.	Wilmington
Loud, John Wesley, Jr.	Ch. E.	Wilmington
Mai, William Frederick	A. & S.	Lewes
Mancini, Peter Anthony	E. E.	Wilmington
McCallister, James Leslie, Jr.	A. & S.	Wilmington
McCoy, Paul Ewing	A. & S.	Newport
McDonald, Malcolm Allison	Ch. E.	Wilmington
McMahon, Morris John	C. E.	New Milford, Conn.
Melson, Donald Lee	Agr.	Bridgeville
Mersch, Walter Frederick	A. & S.	Wilmington
Mitchell, William John, Jr.	A. & S.	Ocean City, N. J.
Moore, Harvey Cleaver	A. & S.	Middletown
Muderick, Bernard	A. & S.	Wilmington
Mulrooney, Edward Aloysius	E. E.	Wilmington
Newman, Elmer Roswell	A. & S.	Gordon Heights
Neylan, John Joseph, Jr.	C. E.	Wilmington
Niles, Jerome Dana, Jr.	A. & S.	Townsend
Page, Morris Brinton	A. & S.	Wilmington
Passwaters, Coulter Henry	A. & S.	Bridgeville
Payne, Jacob Horace	A. & S.	Seaford
Pepper, Hial Robert	E. E.	Rehoboth Beach
Phillips, John Marshall	A. & S.	Laurel
Pierce, Edward Wyatt	Ch. E.	Edgemoor
Porter, Austin McCauley, Jr.	A. & S.	Wilmington
Prestowitz, Clyde Vincent	A. & S.	Wilmington
Rambo, Marvin Lewis	Ch. E.	New Castle
Ratledge, William Raymond	Agr.	Wilmington
Reiver, Julius	M. E.	Wilmington
Rice, Herbert Leigh	A. & S.	Wilmington
Roberts, Richard Raymond	A. & S.	Newark
Roberts, William Bruce	Ch. E.	Perry Point, Md.
Rogers, Robert Edward	A. & S.	Wilmington
Russo, Louis Victor	A. & S.	Wilmington
Salsburg, David Bear	A. & S.	Wilmington
Schnitzer, Charles	A. & S.	Wilmington
Scott, John Dennison	A. & S.	Wilmington
Seitz, Alfred Joseph Pyle	Agr.	Wilmington
Shinn, William Irvin	M. E.	Wilmington
Simpler, Caleb Oliver	A. & S.	Felton

FRESHMAN CLASS ROLL

Siudowski, Thomas Edward	E. E.	Wilmington
Smith, Frank Heyburn	M. E.	Delaware City
Smitheman, Edward Wright	E. E.	Dover
Stewart, James Conley	A. & S.	Wilmington
Swartz, Hyman Marchmount	A. & S.	Wilmington
Swayze, William Wilmer, III	A. & S.	Wilmington
Tammany, Albert Squire, Jr.	M. E.	Wilmington
Tanner, Paul Ora Warren	A. & S.	Marshallton
Taylor, Clarence Wilson	A. & S.	Wilmington
Tyler, James Blaine	A. & S.	Middletown
Vandegrift, Harvey Noble, Jr.	A. & S.	Elmhurst
Vernon, Eugene Axson	A. & S.	Wilmington
Walker, Earl Vennel	M. E.	Delaware City
Wallis, John Frederick	A. & S.	North East, Md.
Warburton, Herbert Byrche	A. & S.	Wilmington
Warren, Thomas Noble	A. & S.	Wilmington
Wells, John William	M. E.	Wilmington
West, Joshua Thomas	A. & S.	Millsboro
Willey, Russell William	A. & S.	Bridgeville
Williams, Harold Herbert	C. E.	New Castle
Worrall, Wilson	A. & S.	Newark
Zabenko, Nicholas Leon	Agr.	Marshallton
Zabowski, Ronald Francis	A. & S.	Wilmington



SWIMMING POOL, TAYLOR GYMNASIUM



WHAT-A-MAN

LUCKY LASSES



FRESHMAN PEERADE



NOON TIME



REAL PEP