

NEWARK POST

❖ Greater Newark's Hometown Newspaper Since 1910 ❖

100th Year, 42nd Issue © 2009

November 6, 2009

www.newarkpostonline.com

Newark, Del.

Landlords seek to quash rental fee

Newark landlords, buoyed by a legal victory in West Chester, Pa., have filed suit in an attempt to squash the city's rental permit fees.

A class action lawsuit was filed last week in Delaware Chancery Court against the City of Newark,

seeking to have the city's rental permit fees nullify the fees, claiming they do not come under the city's charter.

Plaintiffs in the action are Bruce F. and Sarah H. Harvey, Glenn D. Schmalhofer, John Allen Bauscher, Dan R. Beaver and Main Street Court

LLC, who say they are acting on behalf of all landlords in the city.

Newark annually charges a rental permit fee of \$300 per house, \$70 per apartment unit, and \$300 to \$2,100 for fraternities or sororities.

The house and apartment fees are

the highest known fees in the United States, the landlords claim. The lawsuit alleges that these fees far exceed the cost of implementing Newark's rental property registration and inspection program, and have become an unlawful and unconstitutional tax,

they argue. The lawsuit requests relief in the form of an injunction against future excessive taxes, and a refund of past taxes collected from all Newark landlords.

See **LANDLORDS, 13** ►



PHOTO BY MELISSA MARSHALL

Chapel Street Players at the Sugar Rush Cafe, just off Main Street

Main Street has not forgotten Edgar Allan Poe. More than 165 years later, the raven insignia blazoned on Deer Park memorabilia still acts as a reminder of his alleged curse, and on Mischief Night, the Chapel Street Players attempted to revitalize the subtle terror of the American Gothic poet.

Ruth Brown described the Chapel Street Players' presentation of "Poe at Night" at the Sugar Rush Café as serving a dual purpose—first

to share the group's talent with Newark, and secondly, to celebrate the organization's 75th Anniversary.

They began the reading with an effective rendition of "The Bells." The three-person harmony evocative of Macbeth's three witches and Ruth Brown's deep tenor expertly conveyed the madness of Poe's repetition.

See **POE, 13** ►

9-cent property tax hike in proposed city budget

The Newark City Council will consider a proposed city budget that will result in a 9-cent property tax increase as utility and transfer tax revenues remain under pressure.

A rough estimate indicates the increase would add about \$85 to the tax bill of a home with a market value of \$200,000. The city of Newark puts that number at \$89 for a typical single-family home. The city also says the property tax rate for Newark remains below unincorporated areas of the county, even though it provides leaf, refuse collection and snow removal. Homeowners outside the city can pay \$300 or more for such services in the county.

A release from the city says the proposed budget of \$38.6 million preserves the current level of city services and maintain its public and utilities infrastructure. That's an increase of 5.8 percent from last year's budget. While that is above the rate of inflation, the city says it needs to build up a surplus that has been declining in recent years. An adequate surplus is also required in retaining the city's bond ratings.

Having the biggest impact on the city's finances is a sharp drop in real estate transfer tax revenues, down \$2.3 million two years ago to a forecast \$800,000 for 2009 and 2010.

The sale of the Chrysler site to the University of Delaware results in a loss of \$380,000 in property tax revenue on an ongoing basis. The proposed budget was also hit by the University of Delaware discontinuing its use of the city's solid waste transfer station which results in a loss of \$150,000 in general fund revenue. The city's general fund's primary source of revenue is the property tax.

Other factors contributing to the city's financial condition include a 22 percent decrease in utility revenue in budget year 2009 and funding of post retirement benefits. The city has sharply increased water rates and taken other steps to add revenues and cut costs.

One such step taken was an evaluation of city services. A survey was mailed to a random sample of city residents. In the survey response, the vast majority of services were rated as very important by 50 percent or more of those responding. Several services received a very important rating by less than 50 percent of respondents. As a result, the 2010 proposed budget eliminates city funding for the Newark trolley, the print edition of the City newsletter will be eliminated and replaced by an electronic version, and recreation program fees have been increased.

See **BUDGET, 10** ►

INSIDE

Man accused of stealing grandfather's identity 2

Take extra care in watching for bicyclists 8



IN THE NEWS

Can we help?

Offices: The paper's offices are located conveniently in Suite 109, Pomeroy Station, 218 E. Main St., Newark, DE 19711. Office hours are 8:30 a.m. to 5 p.m. weekdays.

Phone: (302) 737-0724

Facsimile: (302) 737-9019

E-mail: postnews@chespub.com

To subscribe: To begin a convenient home-delivery subscription, call 1-800-220-3311.

To place a classified ad: Call 1-800-220-3311.

To place a display ad: Call 737-0724.

THE STAFF of the *Newark Post* is eager to assist readers and advertisers. Reporters, writers, editors and salespeople can be contacted as listed:

Doug Rainey is the Editor of the *Newark Post* he leads the day-to-day operation of the newsroom. Call him at 737-0724.

Mark Corrigan serves as Assistant Editor and can be reached at 737-0724.

Jonathan Waddell is our Design Director. He handles design and composition of our pages.

Renee Quietmeyer is the *Newark Post's* advertising manager who manages the local sales team. She can be reached at 1-443-245-5003.

Jim Galoff handles accounts in the New Castle County area and is an automotive account specialist. Call him at 737-0724.

Mike Adams sells real estate advertising. He can be reached by calling 1-443-245-5031.

Robin Burgess sells ads in the downtown Newark, Middletown and surrounding area. She can be reached by calling 737-0724.

Our circulation manager is **Mary Ferguson**. For information regarding subscriptions, call 1-800-220-3311.

The *Newark Post* is published Friday by Chesapeake Publishing & Printing. News and local sales offices are located in Pomeroy Station, Suite 109, 218 E. Main St., Newark, DE 19711. All advertising and news are accepted and printed only at the sole discretion of the publisher. The *Newark Post* is a member of the Maryland-Delaware-D.C. Press Association, Suburban Newspapers of America and the National Newspaper Association.

POSTMASTER: Send address changes to: *Newark Post*, Suite 109, 218 E. Main Street, Newark, DE 19711. Periodicals postage paid at Newark, Del., and additional offices. (USPS #6465) Known office of publication 218 E. Main Street, Newark, DE 19711.

Man accused of stealing infirm granddad's identity

Editor's note: Police Blotter is compiled from reports from area police departments. For the latest updates, log on to newark-postonline.com.

A month long identity theft investigation has resulted in the arrest of Arthur James 4th, 34, of the first block of Battle Drive in the Newark area. Arthur James 4th was charged with: one count of Identity Theft where Victim is 62 years old or older; one count of Theft by False Pretense over \$1,500; seven counts of Forgery 2nd; one count of Unlawful Use of a Credit Card Over \$1,500 where Victim is 62 years old or older; and 10 counts of Unlawful Use of a Credit Card where Victim is 62 years old or older.



James

In late September, a family member of the victim came into Newark Police Department to report that credit cards had been opened in a family member's name. The victim was hospitalized with dementia related illnesses at the time the cards were applied for and received.

The investigation indicated that James used his grandfather's

identity to fraudulently obtain two credit cards. Arthur James 4th then used the credit cards at stores throughout New Castle County and Maryland, racking up an \$8,262.28 bill. A search warrant was executed at his residence on Battle Drive. During the search, all of the items purchased with the credit cards, including a flat screen TV and a computer, were recovered.

Arthur James 4th was released after his arrest on \$22,000 unsecured bail.

Burglar takes AK-47 and other guns

Police received a burglary report, last week, from a man on Lynn Drive, in Newark, who reported that an unknown suspect had gained entry by prying open a rear door and had stolen several guns from his collection.

The owner, an avid hunter, showed police where someone had entered his office and taken a Beretta Series 92 9mm semiautomatic handgun, an H&K USP Compact 9mm semiautomatic handgun, and a Poly Technologies Legend Series AK-47/S semiautomatic rifle. He stated that all of the guns were kept in metal cases. The guns are valued at more than \$1,750.

Several witnesses in the neighborhood reported seeing a blue, two-door, older model

compact car parked on the street with a black male exiting the vehicle and walking up the street. The male was wearing a dark colored hoodie and possibly carrying a shoulder bag. An impact of a size 10 sneaker with a zigzag pattern was found in the carpet near the front door.

Beth El hit with swastikas

Representatives at Temple Beth El told police that someone had spray-painted swastikas and images of male genitalia on the exterior of the main building and an adjacent storage shed. Gold paint was used in the incident. The damage is thought to have occurred between 10pm on October 30 and 9am on October 31.

No other damage was reported. Security camera footage is being reviewed to see if any leads can be generated.

Sparks lead to burglary arrests

New Castle County Police have arrested two suspects for attempting to steal a utility trailer from the parking lot of the Life Community Church near Newark. Officer Thomas Purse drove past the church late Thursday night and observed

"flying sparks" coming from the side of a trailer. When the officer approached the vehicle, he heard a female voice shouting "stop, stop the police" to a male subject, using a saw getting power from a generator. The suspect was attempting to remove a "Club" anti-theft device. Purse found the suspects had driven a pick up truck to the church and planned to steal a 2009 utility trailer that had been parked in the parking lot.

The following suspects have been charged with possession of burglary tools, attempted felony theft, conspiracy, criminal mischief, and criminal trespassing:

- Robert D. Locicero, 31, who resides in the 1500 block of Whitaker Road, Newark.

- Christi L. Merion, 31, who resides in the unit block of Burns Way in Newark.

They have each been arraigned and released after posting \$7,250 secured bail.



Locicero



Merion

the living room when she awoke to see an unknown male standing in the room. He then laid down next to the victim. The victim then went upstairs and found another roommate. The suspect followed the first victim up the stairs. The two victims confronted the suspect and asked him to leave. The suspect eventually did so.

Approximately 40 minutes later, the two victims were on the second floor of the residence when a hallway light shut off. The suspect had re-entered the residence. The victims locked themselves in a room and called 911. When officers arrived on scene, the suspect was gone. It was later learned that three laptop computers were stolen from the residence along with cash.

The suspect was described as being a college aged white male, dark crew cut hair, average build, with protruding stomach. He was wearing a royal blue t-shirt with unknown writing on the front and blue jeans. The suspect appeared to be intoxicated.

Stolen car found online on eBay

Newark Police have arrested a man, after a stolen car was found listed on a popular online auction site.

Back in early August, a car was stolen from the parking lot of 600 Scholar Drive, University Courtyard Apartments, Newark. The 2003 Toyota Camry had been left unlocked by the 21 year-old owner, a University of Delaware student, who kept a key in the center console.

About one week later, the car was listed for sale on eBay. The listed eBay seller, located in Chesapeake City, Md., was

See **BLOTTER**, 11 ►

Man entered home, made off with laptop computers

Early Sunday morning Newark Police Department responded to a residence on the first block of South Chapel Street for a report of a burglary in progress. Upon arrival, officers talked with two female UD Students. One of the victims said she was a sleep on the couch in



We're focused on
eyeCare.

COMPETENT, EXPERIENCED DOCTORS
CERTIFIED OPTICIANS & STAFF

EYE EXAMS
ALL MAJOR INSURANCES/HMO's ACCEPTED
1000's OF AFFORDABLE AND DESIGNER EYEWEAR
WIDE SELECTION OF CONTACT LENSES
LASIK

WELCOMING NEW PATIENTS
OUTSIDE PRESCRIPTIONS FILLED
STATE-OF-THE-ART TECHNOLOGY
EVENING AND SATURDAY HOURS
TREATMENT OF EYE DISEASES
SE HABLA ESPAÑOL

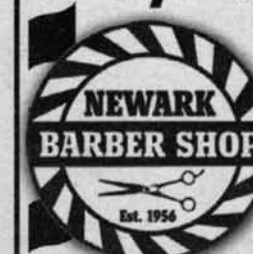
SIMON EYE ASSOCIATES

"Eye Care for Life"

302.239.1933 | www.simoneye.com

Bear | Middletown | Newark | Pike Creek | Concord Pike | Union Street

Lift the weight off
your shoulders...



Newark Barber Shop

• Licensed Barbers
• Reasonable Cost
• True Barber Shop Atmosphere

241 Elkton Road • Newark, DE
(Located across from City Hall)

www.newarkbarbershop.com

302-368-5666



Mon. 9:00 - 3:00
Tues. 9:00 - 5:30
Wed. 9:00 - 5:30
Thurs. 9:00 - 6:30
Fri. 9:00 - 5:30
Sat. 8:00 - 12:00
Sun. Closed

Sports

high schools • UD • leagues

St. Mark's, Caravel face tough opponents

By JON BUZBY

JONBUZBY@HOTMAIL.COM

Newark (0-8, 0-5) at
Brandywine (0-8, 0-5)

For the second week in a row the Yellowjackets will play another winless opponent. The Bulldogs were held scoreless last weekend against A.I., which also blanked Newark the week before. One team will come away with its first win, while the other will go into week 10

with one last hope to avoid a winless season.

Newark coach Butch Simpson: "[Our record] is a product of a number of issues that have created the situation we are in. There is no consistency offensively and very few big plays. In addition, turnovers have contributed too many of the points scored by our opponents. Defensively, we have given up too many big plays, especially on third-down situations. Special teams are very inconsistent, giving good field

position on many kickoffs and not fielding many kicks, which has led to often starting deep in our own territory. Overall, we are all responsible for our lack of success. However, it all starts with me and I haven't been able to get it right."

Brandywine coach Keenan Dorsey: "We are looking forward to our game against Newark. I believe Coach Simpson and I are in the same predicament with young but promising teams. I believe this game will show both teams what their futures

hold. I'm looking forward to seeing how my young players match up against players with their age and experience."

St. Mark's (7-1) at St.
Elizabeth (6-2)

The Spartans need to be careful not to look ahead to their showdown with Salesianum next weekend in a game which, if both teams win this weekend, could decide the No. 1 seed in the state tournament. Andre Patton rushed for two touchdowns in St. E's 42-11 win over Tatnall last Saturday.

St. Mark's coach John Wilson: "We accomplished our goal of going undefeated in Flight A with wins over Newark, Glasgow, Christiana and Wm. Penn. Now we enter another challenge with our Catholic Conference counterparts. St. Elizabeth is a good football team. They are always

well coached and they have plenty of athletes on both sides of the ball. We need to have a better week of practice than we did last week if we want to keep our playoff hopes alive."

St. E coach Joe Hemphill: "St. Mark's has improved every week to the point where I think they are one of the best teams in the state. It will take a tremendous effort on our part to knock them off. We will have to play a mistake-free game."

Glasgow (1-7, 1-4) at
Christiana (3-5, 2-3)

The Dragons will look to carry the momentum from their first win last weekend to face a Christiana team hoping to capture its third consecutive victory. Running back Clifton Armstead and quarterback Khari Ngozi will look to have big games for the Dragons, while Christiana's Joseph Winslow is coming off

a four-touchdown day in the Vikings' overtime win against Charter.

Glasgow coach Shannon Riley: "The Christiana and Glasgow rivalry is very intense. They did a great job against Wilmington Charter last week. We will have to contain their talented running backs and continue to improve offensively this week."

Christiana coach Darwin Manges: "After being down by 20 points in the first quarter last week we showed great character to come back and win it in overtime. This week will take that kind of effort and more as we face a district rival in Glasgow."

Caravel (6-2) at
Salesianum (7-1)

This game will be a battle
See **SPORTS, 11** ▶

Use Your
FLEXIBLE SPENDING ACCOUNT
here!

99¢ Greeting Cards

Notary Public Available
Professional Ear Piercing

Northside
Pharmacy

Your needs! Your pharmacy!
Expect fast, friendly, courteous service.

707 Bridge St., Suite B, Elkton, MD 21921 • 410-398-DRUG (3784)

Something terrible happens when you don't
advertise...Nothing! Call 737-0724 to place an ad.

MERLE NORMAN® Cosmetics
OPEN HOUSE/GRAND OPENING
NOVEMBER 7, 2009 • 10 AM-5 PM

Middletown Crossing Shopping Center
480 East Main St. • Middletown, DE 19709

(across from Acme Market)

302-376-5845

15% Off All
Merle Norman Products
(Excluding OPI / Accessories)



**NEWARK
CHARTER SCHOOL**

"Excellence In Academics and Decorum"

Applications are being accepted: Oct. 12 through Nov. 23, 2009

For students who will be entering grades K-8 in Sept. 2010

Applications for enrollment may be obtained by:

- downloading a copy from our web site: www.newarkcharter.org
- stopping by our school
- visiting our Open House

2001 Patriot Way, Newark, Delaware 19711

(located near the intersection of Christina Pkwy. & Elkton Rd.)
(302) 369-2001

School Rating 2003: "SUPERIOR SCHOOL"
School Rating 2004: "SUPERIOR SCHOOL"
School Rating 2005: "SUPERIOR SCHOOL"
School Rating 2006: "SUPERIOR SCHOOL"
School Rating 2007: "SUPERIOR SCHOOL"
School Rating 2008: "SUPERIOR SCHOOL"
School Rating 2009: "SUPERIOR SCHOOL"

by Delaware Department of Education

**OPEN
HOUSE**

Tuesday,
November 10

6:00 - 8:00 PM

OBITUARIES

Something to Smile About!

Implant Dentistry

An exciting alternative to bridges or dentures. Laugh, talk and eat confidently with teeth that feel and look like your own

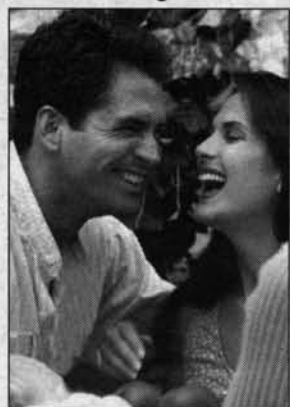
Dr. Barry Kayne, D.D.S.

Specialist with over 25 years experience

Omega Professional Center
Suite F-58 • Newark, DE 19713
Across from Christiana Hospital

302-456-0400

Fax: 302-456-0396
www.delawareperio.com



Take Control Of Your Utility Bills!

Power Off?
We Sell Generators!

Hentkowski, Inc.
"Your Key To Comfort"
Heating, Air Conditioning & Electrical

INFINITY SYSTEM

ServAssure DEALERS

302-998-2257

"Doing Business since 1968"
www.hentkowski.com

Something terrible happens when you don't advertise...Nothing! Call 737-0724 to place an ad.

got scrap?
TOP DOLLAR PAID FOR SCRAP!



ELKTON RECYCLING

410-392-2980

■ Obituaries are printed free of charge as space permits. Information is usually supplied to the newspaper by the funeral director.

Carol Crossley

Carol B. Crossley, 79, of Newark, DE died peacefully at home surrounded by her loving family on Oct. 27.

Carol was born in Philadelphia, Pa on Dec 25, 1929, to the late James and Edythe Pacella.

Survivors include her husband of 58 years, Andrew S. Crossley, her daughter, Linda Howard and husband, Thomas Howard of Newark, DE, daughter, Cynthia Bain and husband, Roger Bain of Bear, DE; eight grandchildren, Heather Stanley, Shelly Stanley, Carolyn Howard, Faith Howard, Stephanie Bain, Kristen Bain, Kyle Bain and Rachael Bain.

Funeral Service was held on Monday, November 2, at Red Lion Evangelical Free Church, 1400 Red Lion Rd, Bear, DE 19701 at 12:30 pm. Interment followed in the DE Vets Memorial Cemetery

Frances Exline

Frances Howard Exline, of Newark, DE, died of natural causes at home on October 22.

Fran was born in Parkersburg, WV in 1922 and graduated from Ohio University where she and Ralph met while on a double date with other people. She was a member of Alpha Xi Delta Sorority. They married in 1944 before Ralph's WWII deployment. They moved to

Newark in 1955 where Ralph began a distinguished career in the U of D's Psychology Department. While raising her daughters, Fran threw herself into University life as a member of the American Society of University Women, the League of Women Voters, and as a volunteer for UNICEF and the Artisan's Co-Op in Chadds Ford. Fran was a long-time Election Judge for the Newark Board of Elections, being called out of retirement several times. In 1980, Fran turned her long-time avocation, cooking, into a vocation, running a successful catering business, the Newark Upper Crust with partner Sadie Meakin, then Marilyn Kuhlman; for 26 years.

Beloved mother of Ann Exline Starr and Liz Exline Horstman, she is also survived by sons-in-law, Roland Starr and Robb Horstman and grandkids, Hunter, Caitlin, D.V. and Logan Exline Starr, and Robbie, Emily and Johnny Horstman; two brothers, John and Joe Howard and numerous nieces and nephews and predeceased by a sister Beth and the love of her life, husband of 49 years, Ralph V. Exline.

A memorial celebration was held at 11 am, on Thursday, October 29, at the Unitarian Universalist Fellowship, 420 Willa Rd., Newark, DE 19711. A buffet lunch featuring some of Fran's recipes took place immediately following the celebration.

Doris A. Foster

Doris A. Foster, 79, of Newark, DE, died peacefully

on October 31, surrounded by her family.

Mrs. Foster was born in Averill Park, NY on July 27, 1930 to the late Fredrick and Louise E. Robertson and had been a homemaker.

In addition to her parents, Mrs. Foster was preceded in death by her husband, George E. Foster, and her son, Richard G. Foster. She is survived by her daughters, Shirley L. Foster of Newark, DE, Nancy A. Smith and fiancé, Thomas Hurst of Ellendale, DE, and Carolyn R. Krah and husband, Raymond of Newark, DE; son, Daniel G. Foster and wife, Elizabeth of Pottstown, PA; daughter-in-law, Christine C. Foster of Boundbrook, NJ; brother, Gary Robertson of Oswegatchie, NY; sister, Jean Fleming of Averill Park, NY; grandchildren, Jeanne, Richard, Matthew, Jennifer, Amber, Lauren, Katherine, Thomas, and Josh; and three great grandchildren.

A graveside service was held at 12 noon on Tuesday, November 3, at All Saints Cemetery, 6001 Kirkwood Highway, Wilmington.

In lieu of flowers, contributions may be made to the American Heart Association, c/o Spicer-Mullikin Funeral Home, 1000 N. DuPont Parkway, New Castle, DE 19720.

Myrtle Fromme

Myrtle Fromme (Schermer), 94, died on October 26, with her family around her.

Myrtle was born in Pottsville, PA and moved to Laurel, DE following World War II with her husband, Ronald E. Fromme. After her husband's death in 1979, Myrtle moved to and remained in the Newark area. She is survived by two sons, David and his wife, Charlene, and Craig and his wife, Sue. Myrtle had four grandsons

whom she dearly loved, Ron, Steven, Bret and Joel; and a great-grandson, Christopher.

A private burial was held by the family on Wednesday.

Brandi Galvin

Ms. Brandi Lee Galvin, 18, of Newark, DE, died suddenly on Saturday, October 24.

Brandi was born in Newark on May 10, 1991. An enthusiastic student, she greatly enjoyed attending school. She also looked forward to spending time with her children and her family and keeping up with her many friends on My Space.

She is survived by her children, Alexia Y. Wardrop-Lacio and Christian D. Wardrop-Lacio, both of Newark; father, Ronald L. Galvin, Sr. of Maryland; mother, Linda Lee Wardrop of Newark; brother, R.J. Galvin of Newark; sister, Monica L. Galvin of Newark; aunt, Sherri Wardrop-Montgomery of Newark, who was like her second mother; uncle, Jerry Wardrop of Michigan; nephew, Domoni A. Wardrop of Newark; grandparents, David and Barbara Arnold of Baxley, GA; fiancé, Carlo Lacio of Newark; and extended family. She was preceded in death by grandmothers, Betsy E. Arnold and Doris Galvin.

A funeral service was held at 11 am on Thursday, October 29, at the Spicer-Mullikin Funeral Home, 1000 N. DuPont Parkway, New Castle, DE. Interment followed in Gracelawn Memorial Park, 2220 N. DuPont Parkway, New Castle, DE.

In lieu of flowers, contributions may be made to The Children of Brandi Lee Galvin Fund, c/o TD Bank, 1001 Songsmith Drive, Bear, DE 19701.

See OBITs, 9 ►

Dr. Yvonne Kneisley
OPTOMETRIST

• Clear Explanations of Procedures
• Professional & Caring Staff
• Most Insurances & HMO's Accepted

KNEISLEY
EYE CARE

(302)224-3000

The Main Street Galleria
45 East Main Street, Suite 201 • Newark

www.kneisleyeyecare.optometry.net

Eye Examinations • Contact Lenses • Fashion Eyewear • Treatment of Ocular Diseases

HOLLOWAY

EYE CARE & OPTIQUE

2015 C Pulaski Hwy
Havre de Grace, MD 21078
Phone: 410-939-7717

202 S. Bridge Street
Elkton, MD 21921
Phone: 410-392-2323

**Featuring: Oakley
Tiffany & Co.
Vera Bradley
Coach and many more**

Evening and Saturday hours
Most Major Insurances Accepted
Outside Prescriptions Welcome

Come in to EXPERIENCE DISTINCTION today!

www.hollowayeyecare.com

COMMUNITY EVENTS

English Conversational Classes

Meet each Monday at Newark United Methodist Church at 69 E. Main Street, Newark, DE. Classes are free and meet from 1:00-3:00 p.m. and 7:00-9:00 p.m. For more information call (302) 453-8214.

Senior center holds fundraiser

A fundraiser for the Newark Senior Center, Friday, November 6, 7-10 pm. Dance to the 50s and 60s live music of The Honeycombs. Food available, cash bar. Door prizes galore! \$10 per person. Get your tickets early by calling 302-737-2336.

Delaware Military Heritage Day

Saturday, November 7, 10 am to 4 pm. Fort DuPont State Park, Delaware City. Vintage military vehicles on display, military relics swap meet, USS Cole flag ceremony, Coast Guard cutter in port, military history lectures, military reenactors. Sponsored by the Delaware Military Museum and the Delaware Military Heritage and Education Foundation Inc.. For more info visit www.militaryheritage.org or call Bill Conley at 302-559-5738.

Holiday Fling

Come shop for fall and winter holiday gift items at our 6th annual "Holiday Fling" on Saturday, November 7 from 10 am to 3 pm at Christiana Presbyterian Church, 25 Old

Baltimore Pike, Christiana, DE 19702, 1 mile south of Christiana Mall. Both nationally-known and local vendors will be displaying cosmetics, jewelry, candles, specialty food items, home décor and crafts. Lunch items will be available for sale. There will also be a bake table and door prizes all day. No admission charge. Table fee for vendors is \$30. For more details, call 302-737-0212 or 302-322-1998.

Free Children's Science Event

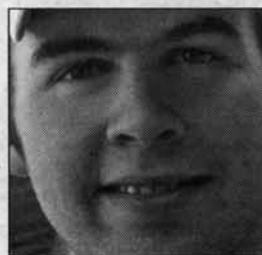
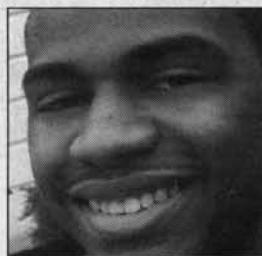
Saturday, November 7, 12 noon-4 p.m. at the Independence School, 1300 Papermill Rd., Newark. The American Chemical Society along with several local businesses and schools are hosting

See **EVENTS, 6** ►

**YOUR COLLEGE.
YOUR FRIENDS.
YOUR FUTURE.**

CECIL COLLEGE

REGISTER NOW
Spring classes begin January 19.



**REAL STUDENTS.
REAL SUCCESS.**

www.cecil.edu • 410-287-1000 Toll Free • 866-966-1001 • TTY • 410-287-2701

BUILD YOUR PORTFOLIO WHILE BUILDING YOUR COMMUNITY.

Delaware municipal bonds are 100% free of federal and sometimes state income tax for Delaware residents.

Municipal Bond

4.75%*

Yield to Maturity

Callable on: 7/1/2019

Next call: 7/1/2019

@ 100.00

Final Maturity: 7/1/2029

*Yield effective 11/2/2009, subject to availability. Yield and market value may fluctuate if sold prior to maturity, and the amount you receive from the sale of these securities may be less than, equal to or more than the amount originally invested. Bond investments are subject to interest rate risk such that when interest rates rise, the prices of bonds can decrease, and the investor can lose principal value. Any bond called prior to maturity results in reinvestment risk for the owner of the bond. May be subject to state and local tax. May be subject to alternative minimum tax. Municipal bonds may have original issue discount.

To invest in tax-free bonds, call or visit your local financial advisor today.

Mike Laur
Financial Advisor

364 E Main St
Newark, DE 19711
302-368-2352

www.edwardjones.com Member SIPC

Edward Jones
MAKING SENSE OF INVESTING

Bring In for Special Offer

50% OFF
Rebate On Your First Interest Payment!



Payday Loans up to \$1,000

Takes 15 Minutes

JUST BRING IN:

• Valid driver's license • Most recent pay stub • Most recent bank statement • Check Book

Don't let money get in the way of what you need.

EZ LOANS

661 College Square, Newark DE

(302) 709-3340

322 Fox Hunt Dr. Bear, DE (302) 834-1800

Not valid with any other offer - New loans only. Only one coupon per 90 days. Payday advances should be used for short-term financial needs only, not as a long-term financial solution. Customers with credit difficulties should seek credit counseling.

Toll FREE: 877-297-0011 • ezloansdelmarva.com

COMMUNITY EVENTS

► EVENTS, from 5

hands-on science activities and an exciting chemistry show. The activities will include elements of gunpowder, chemistry detective work, rocketry, slime, and cleaning pennies. There will be robot and solar car demos. Boy and girl scouts and other children's groups can earn a free patch. The show starts at 3 PM. The event is aimed at grades 1-6, but all ages are welcome. Contact the event chair for more information: Sujata Bhatia, 302-695-8140.

Salute to Veterans Gala

On November 7, the VFW Ladies Auxiliary will host the 1st Annual 'Salute to Our Veterans Gala. This event will be held at VFW Post 3420

at 649 Churchmans Road in Newark, De. from 6:00 pm till midnight. We are proud and honored to have as our guest speaker Brigadier General Ernest G. Talbert, Vice Commander of the Delaware Air Natl. Guard. In addition to General Talbert, we will have WWII veteran Emilio Mazza (Purple Heart) as our guest. We will have a musical salute to our Veterans, dinner, dancing, a wonderful assortment of Silent Auction items and we will also pull the winning ticket of our ongoing 50/50. This Auxiliary Post is home to Dianne Walters, 2009 State of Delaware VFW Auxiliary President.

"Date for a Cause"

The New Castle Jaycees are proud to present our first ever Charity Date Auction - "DATE FOR A CAUSE" -

which will be held on Saturday, November 7th from 7pm-11pm at the Deerfield Country Club in Newark. All of the proceeds will benefit Faithful Friends, the Delaware Breast Cancer Coalition, and the New Castle Jaycees. Attendees will be able to bid on select bachelors and bachelorettes for a one-time date, provided by the Jaycees. Attendees will also have the

chance to bid on Business Professionals and Executives from various industries for a career-related/mentoring "date". There will be a special VIP Meet and Greet Mixer with the bachelors that includes early admission at 6:30, champagne and appetizers. General admission includes appetizers and an after party with local DJ Amaze; Cash Bar. Must be 21

or older. Tickets prices are \$25 in advance, \$30 at the door for VIP, \$20 in advance, \$25 at the door for General Admission, and \$15 for Delaware Jaycees members. Advanced tickets must be purchased by Monday 11/2/09. Details and Tickets can be purchased on our website: www.newcastlejaycees.org. Sponsorship Opportunities are also available. Please con-

tact Lalena323@gmail.com.

27th Annual Spaghetti Dinner

Sunday, November 8, 1 to 6 pm. Jeanne Jugan Residence, 185 Salem Church Road, Newark, DE 19713. Dinner, games, casino plus much more. For details, please call 302-368-5886.



Kick-start your physical therapy.

Elkton Care and Rehabilitation Center's Rehab Recovery SuitesSM are geared toward people eager to return to their daily routines and provide many of the comforts of home in an interdisciplinary and therapeutic setting.

Our services include:

- on-site physical, occupational and speech therapy to assist with orthopedic injuries, arthritis, amputations, strokes and other diagnoses
- 24-hour nursing coverage
- appealing menu choices
- bedside TVs and Internet access
- private rooms available



SUNHEALTHCARE

Caring is the Key in Life

Call (410) 398-6474 for more information or visit us:
Elkton Care and Rehabilitation Center/SunBridge Healthcare
One Price Drive • Elkton, MD 21921
www.sunbridgehealthcare.com

300010-CW090909

CECIL COLLEGE



JOIN US

REAL STUDENTS. REAL SUCCESS.

INFORMATION NIGHT

Thursday, November 12, 2009, 6:30 - 8:30 p.m.
North East Campus, Technology Center, Room 208

Meet one-on-one with College representatives.
Take a campus tour.

LEARN ABOUT

Admissions | Academic Programs | Financial Aid | Student Services
Transferring to four-year colleges | Multicultural Student Services
Athletics | Career Services

LIGHT REFRESHMENTS SERVED.

Everyone is invited! R.S.V.P. to 410-287-1000

WWW.CECIL.EDU Toll Free: 866-966-1001 TTY: 410-287-2701

DuPont THEATRE

DELAWARE'S
BROADWAY
EXPERIENCE

"IRRESISTIBLE!
A sure-fire crowd pleaser
with a rock-and-roll heart!"
—The New York Times

STOMP



photo: Junichi

FOUR PERFORMANCES ONLY!
NOVEMBER 13-15, 2009

(302) 656-4401 (800) 338-0881
www.duponttheatre.com

APM
Advanced Pest Management

It's Fall Time!

Leave It To APM to Solve
Your Gutter Cleaning Problems!



- Save 50% vs other gutter systems
- 25 Year Guarantee
- Gutter cleaning included!

For more information call 800.5NO.Bugs
www.apmservices.com

Family owned & operated for over 45 years

Tired of high costs and low returns?

- Home Insurance
- Life Insurance
- Auto Insurance
- Investments

Save Money Now.
Call Dan at 455-9520.



Daniel DeFoe
DeFoe-Insurance@Comcast.net
302-455-9520

Daniel DeFoe
Insurance & Financial Services

Discounts for Delaware State Employees and U of D Alumni

DELAWARE
EYE CARE
CENTER

Complete Eye Care
Schedule your appointment today!
800-900-2020



Gary I. Markowitz, M.D.
Board Certified Ophthalmologist

Edward H. Hu, M.D.
Board Eligible Ophthalmologist

Specializing in:

- Cataract and LASIK surgery
- Diabetic and Ocular Disease Management
- Glaucoma and Retina Evaluation and Treatment
- Eyeglasses and Contact Lenses

Accepting Most Insurances

5 convenient locations to serve you!

DOVER	MILFORD	NEWARK	SMYRNA	BEAR
833 S. Governors Ave. 674-1121	110 N.E. Front St. 422-5155	323 E. Main St. 368-9105	10 S. Market St. 653-9200	1721 Pulaski Hwy. 836-5410

www.delawareeyecare.com

Church Directory

To Advertise or make changes call

Nancy Tokar at 1-800-220-1230 or voice mail 443-245-5072

Prices starting as low as \$12.00 a week!

Changes can be made by Friday, 4:30 p.m. for the following Friday's edition.


**Evangelical
Presbyterian Church (PCA)**
Christ Centered • Biblically Based
Sunday Worship 10:45am & 6pm
9:30 Sunday School
308 Possum Park Rd., Newark
302-737-2300
www.epcnewark.org

The Way Ministries

(an extension of Highway Gospel Community Temple, West Chester PA)

Highway Word of Faith Ministries is presently worshipping @ The George Wilson Community Center 303 New London Rd., Newark, DE

Sunday:

8:00-9:00am Christian Education classes for all ages
9:00am Sunday Morning Celebration

Wednesday: Location

7:00-8:00pm Bible Enrichment Class at Prayer Temple
49 New London Rd.
Newark, DE 19711
Mailing Address: P.O. Box 220
Bear, Delaware 19701-0220
Visit us online @ www.theway.ws or send us a note at theway238@aol.com



Pastor Carl A. Turner Sr. & Lady Karen B. Turner
For further information or directions please call:
302-834-9003



The Episcopal Church
Welcomes You

St. Thomas's Parish

276 S. College Ave. at Park Place,
Newark, DE 19711

Across from UD Health Center
(302) 368-4644

Church Office: (9:00-1:00 Mon-Fri)
www.stthomasparish.org

Sunday Worship

8am, 10:30am & 5:30pm

Join us Sundays at 9:30am for Sunday

School and Adult Education classes

Sunday Adult Education Programs

9:30-10:15am

The Rev. Paul Gennett

Marc F. Cheban,

Organist & Choir Master

Wandering? Wondering? Wounded?

God meets you where you are!

And So do we.

Come and see...

GLORYLAND GOSPEL MINISTRIES "We've Re-located"

Pastor Tweed invites you to
Join us for worship in the
CHAPEL at Christ Center

Gospel Missions

4365 Telegraph Road -Route 273 W
3rd driveway on R past Fair Hill red light

Sunday's at 10AM

Non-denominational ~ Full Gospel

*"We get more hits
from this one
ad than any
other advertising
we do."*

-Good Shepherd
Episcopal Church

Call Nancy Tokar to place
your ad at

1-800-220-1230

Wisdom from many sources



Sunday Service 10am
Childcare and Sunday School

Unitarian Universalist Fellowship
420 Willa Road, Newark
302.368.2984 uufn.org

Come Join Us!

Speaker: Rev. Greg Chute



Sunday 8:30 a.m.
Acoustic Worship
Sunday 10:30 a.m.
Electric Worship

Pastoral Team
Curtis E. Leins, Ph.D
Robert F. McKnight
Theodore Lambert, III
James L. Ford

Located 1 1/2 miles N. of Elkton
on Rt.213

(410) 392-3456

NEW LIFE CHRISTIAN FELLOWSHIP

Sunday Service 9:30 AM
Multimedia Children's Ministry!
Contemporary Worship!
Relevant messages!
Church Office: 999-1800
Check out our web page:
www.NewLifeDE.org
2712 Old Milltown Rd.
Wilmington, DE

(near Kirkwood Hwy & Milltown Rd.)



Episcopal tradition,
contemporary music

Join us for
weekly worship on
Sundays at 11am
at St. Nicholas Church,
10 Old Newark Road

Brightening lives, nourishing souls, connecting to God

302 547-7849 • www.GoodShepherdDE.org

Sponsored by the Diocese of Delaware

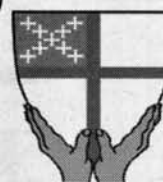
TRINITY

PRESBYTERIAN CHURCH (PCA) SUNDAY WORSHIP 9:30 AM

Meeting at: First Church of the Nazarene
357 Papermill Road, Newark, DE
Pastor Mark Bolze

For more information please call 302-233-6995

www.trinity-pca.info.org



St. Barnabas' Episcopal Church

Serving Hockessin, Pike Creek, Mill Creek & Newark

Worship Saturday 5:30pm

Services: Sunday 7:30, 10:00 am

Child Care (0-9) - Children's Chapel (4-11)

302-994-6607

www.stbarnabasde.org

2800 Duncan Road, Wilmington, DE 19808



First Church
of Christ,
Scientist

48 West Park Place, Newark

Sunday Service & Sunday School 10:00am
Wednesday Testimony Meetings 7:30pm

Childcare available during services.

302-456-5808

ALL ARE WELCOME

www.fccsnewark.org

NEWARK WESLEYAN CHURCH

708 West Church Rd
Newark, DE
(302)737-5190

Pastor James E. Yoder, III

Sunday School for all ages.....9:30am

Morning Worship10:30am

Children's Church & Nursery Provided

Choir - Sunday5:30pm

Youth Meeting - Sunday6:00pm

Mid-Week Bible Study

"A Family Church with a Friendly Heart"



You are welcome at

Ebenezer
United Methodist Church

SUN SERVICES 8:30 & 11:00am

SUNDAY SCHOOL 9:45am

525 Polly Drummond Road

Newark 302-731-9494

Handicapped Accessible

Child Care

TED DAY, PASTOR



IN THE NEWS

Time for bicyclists, motorists to be extra careful

By CINDY GENAU

NEWARK POST CONTRIBUTING WRITER

(Editor's note: Genau is an extension agent for New Castle County)

The City of Newark has re-established its Newark Council Traffic Bicycle Subcommittee. There were some interesting statistics distributed by the committee and the Wilmington Area Planning Council (WILMAPCO) in the Newark Bicycle Plan. A study conducted in Newark, indicated that over a three-year period most bicycle crashes occur during the fall months. In 2008, according to the DE State Police Traffic Report, 6

bicyclists were killed in the State and 120 were injured. That is 10 bike riders injured per month, over 2 injured per week, and those are only the incidents we know were reported — there are many more that are not.

The Subcommittee wants to remind the Newark and University of Delaware communities to Bike Smart and Bike Safe. A National study by the Pedestrian and Bicycle Information Center identified the types of car-bicycle crashes that occur most frequently. Both bicyclists and motorists are at fault. When bikes and cars are travelling parallel to each other, crashes are most often caused by: motorists turning into the path of a bicyclist,

motorist overtaking a bicyclist, and bicyclists turning or merging into the path of the motorist — most of the time making a left turn in front of the car traveling in the same direction. When cars and bike riders are in crossing paths the most common cause of crashes is either the motorists or the bicyclists failing to yield the right of way at an intersection or crosswalk, and bicyclists failing to yield right of way in mid-block locations as driveways.

It is very apparent that there is much that drivers of vehicles and riders of bicycles can do to prevent these crashes. It is the law, and is documented in the Delaware Driver's manual, that bicyclists are legal vehicles, and therefore must obey all traffic

laws, and motorists must treat bicyclists like all other vehicles. Driving around Newark, I frequently see bicyclists and motorists who don't adhere to rules of the road or share the road as is indicated by our driving laws. Preventing collisions is also about being courteous and respectful towards all users of the road.

Three principles will assist bicyclists in sharing the road: control, predictability, and visibility. I see way too many bicyclists who are not visible and are not properly equipped to ride a bike. One serious and too common problem is bicyclists who ride in the wrong direction. These bikers are a danger to themselves and to motorists because they just

can't be seen. This is especially important as it gets dark earlier every evening.

Here are reminders for bicyclists of laws and common sense tips, because it is no surprise that when bikes and vehicles are involved in collisions, it is the bicyclist who fairs the worst. These tips are the best ways for bicyclists to provide self-protection and to avoid injury:

Always ride WITH the flow of the traffic; ride as far right as possible to the right of the roadway as practical and in a straight line; Wear safety gear, including a helmet and bright colored clothing; DE law requires all individuals up to 18 to wear a helmet; It is the law that you must have a white light visible for 500 feet, a red rear-reflector visible for 600 feet, and reflective material visible from both sides for 600 feet, or a lighted lamp visible from both sides for 500 feet. A tail light is recommended. It is required that bikes yield to pedestrians along a sidewalk or across a roadway and along a crosswalk, and that a bicyclist shall give an audible signal before overtaking and passing the pedestrian. Bicyclists must signal their intentions by point-

ing with their arm when they are turning left, or right, or coming to a stop. This gives motorists time to react to avoid a collision.

In downtown Newark, it is illegal to ride a bicycle on the sidewalks of Main Street, but other walkways or pathways are legal; in areas where usable paths for bicycles exist, bicycle riders should use those paths and shall not use walks reserved for pedestrians; and parked bicycles need to be locked to bike racks, and not fences or areas blocking doorways of buildings or access ways. It is against the law to ride a bicycle under the influence of alcohol or drugs.

Some reminders for drivers to safely share the road are:

Keep an eye out for cyclists by scanning on all roadways in Newark and around the UD campus; Use caution when approaching a bicyclist and give the rider extra space; When a bike rider signals they are turning left, don't speed up to pass them first; Remember bicycles are vehicles and should be given the right of way as any other vehicle; Drive the speed limit always especially in residential areas; and be prepared to slow or stop for the unexpected.

Barksdale Dental Associates

along with Dr. Neil McAneny
and Dr. Franklin Marsico
welcomes

Dr. Nathaniel J. Bent
to the practice serving Newark Dental
needs for the past 40 years.

Graduate of Univ. of MD Dental School 2005

Specializes in Family/Cosmetic/

Preventive Dentistry

Christiana Care General Practice Residency, 2005

302-731-4907

www.barksdaledental.com

Barksdale Professional Center

625 Barksdale Rd. Unit 117 • Newark, DE

Behind Newark Municipal Bldg.

Se Habla Espanol

Most Insurances Accepted • Financial Plans and Specials



STANLEY STEEMER®

5 ROOMS, 1 HALL
& STAIRCASE FOR \$175



CALL FOR DETAILS

302-322-5511

Valid at participating locations only

ALTRA, INC

HARDSCAPE • LANDSCAPE

OUTDOOR FEATURES

- Pool Surrounds
- Fire Pits
- Walkways
- Patios
- Outdoor Kitchens
- Retaining Walls
- Driveways
- Planting Beds
- and More...

Commercial services
available, call for more info

Experts in outdoor beauty since 1992

443-309-0962 • www.altra-inc.com

email: altrainc@aol.com

Home, the reflection of you
— what's your story?



"Delaware's Longest Running Bakery"

Holiday Pies Available

Call Today to Order

302-737-5310



253 East Main Street, Newark
www.BingsBakery.com

BING'S BAKERY

EDUCATION—a GIFT that lasts a lifetime!

- ✓ READING, WRITING
- ✓ MATH, SPELLING
- ✓ PHONICS, STUDY SKILLS
- ✓ STATE TESTING PREP
- ✓ CONFIDENCE, MOTIVATION, SELF-ESTEEM
- ✓ SAT & ACT PREP

Call Huntington today, and
we'll help give your child the
skills essential for success at
school - and success in life.

PRIVATE TUTORING FOR
SAT/PSAT/
ACT PREP

Huntington
LEARNING CENTER®

Newark • 34 Liberty Plaza • Kirkwood Hwy. • 302-737-1050
Independently owned and operated. ©2007. Huntington Learning Centers, Inc.

Blue Grass Concert

« Rhonda Vincent
& The Rage



Junior Sisk »
& Ramblers Choice



Sat., November 21, 2009

Showtime: 6 PM

RESTAURANT OPENS AT 4 PM

**A. CURTIS ANDREW
AUCTION FACILITY**

American Corner, MD

www.acurtisandrewauction.com

6 miles north of Federalsburg, MD

10 miles south of Denton, MD, on Auction Road

**"NOT A BAD SEAT
IN THE HOUSE"**



The Next Best Thing

FOR ADVANCE TICKETS CALL: 410-479-0756 or 410-754-8826

NO RECORDING OR VIDEOS • NOTICE: R.V. PARKING OK • NO HOOK-UPS

OBITUARIES

► OBITU, from 4

Mary Kenney

Mary Elizabeth Kenney, 30, of Newark, died October 28, surrounded by her loving family.

Mary Beth was born in Wilmington, where she began a life-long battle against an illness which caused major heart defects and an array of other serious health issues. She attended Hodson VoTech High School before transferring to

First State School where she graduated in 1998.

She is survived by her mother, Pam Kenney (Joyce Pedrick), her partner Raffie Veloz and their son, David; her sister, Christine Doyle (Earl); brother, John (Darlin Abraham); niece, Mary Doyle, nephews Delayne and Stephen Doyle; grandmother, Calysta Hitchens; grandfather, Ralph Justice (Marty); uncles Lawson Justice, Kevin Justice (Judy), and Stephen Kenney (Renee); aunts, Peggy Feters (Brian) and Renee Whitt (Mark); and

many cousins. She was preceded in death by her father, Robert Kenney.

Friends and family were invited to attend a Mass of Christian Burial at 11:30 am Tuesday, November 3, at Church of the Holy Child, 2500 Naamans Rd., Wilmington. Interment followed Mass in Cathedral Cemetery.

In lieu of flowers, the family requests donations to a trust fund for David. Checks should be made payable to David Veloz Kenney and can be sent in care of Joyce Pedrick, 91

Hollybrooke Drive, Langhorne, PA 19047.

Robert Marshall

Robert L. Marshall, 59, of Canon, Ohio, died Friday, October 23, after a long illness.

He was the son of the late Ira Lincoln and Marguerite (Peg) Marshall. Bob grew up in Newark and was a 1968 graduate of Christiana High School and was a graduate of the University of Delaware. He was employed as a Grant Administrator for the Department of Justice.

He is survived by his wife of 32 years, Sharon (Alford) Marshall; daughter, Katie Marshall; grandson, Raymond Gibbs, both of Massillon, Ohio and his sister, Mary Ann Marshall of Wilmington.

A memorial service was held at 2pm, Monday, November 2, at St. Mark's Methodist Church, 1700 Limestone Road, Wilmington, DE 19804.

In lieu of flowers, the family requests donations to a trust fund for Raymond Gibbs, c/o Mary Ann Marshall, 138 Delview Dr., Wilmington, DE 19801.

■ *Obituaries of the following persons will be posted on the web this week:*

Carol Crossley
Frances Exline
Doris A. Foster
Myrtle Fromme
Brandi Galvin
Mary Kenney
Robert Marshall
Jacqueline McCluney
Ellen McCullough
Marsha Owens
Betty Smith
Daniel Vaughn
Charles West
Joanne M. Wright

WILMINGTON & WESTERN RAILROAD

Create Childhood Memories!

November 1 & 7
**AUTUMN LEAF SPECIAL
TO MT. CUBA**
12:30PM *reservations suggested

November 1 & 7
**AUTUMN LEAF SPECIAL
TO HOCKESSIN**
2:30PM *reservations suggested

November 8
**VETERAN'S DAY
CELEBRATION**
Starts at 11:30

November 14 & 15
MT. CUBA EXPRESS
12:30 & 2:30PM

November 6 & 13
HAYRIDE EXPRESS
8:00PM *reservations suggested

November 28 & 29
SANTA CLAUS EXPRESS**
12:30 & 2:30PM *reservations suggested

November 10
**BACK BURNER
DINNER TRAIN**
7:00PM *reservations required

Reservations can be made online at

www.wwrr.com or by calling 302-998-1930

Greenbank Station is on Newport-Gap Pike, Rt. 41N in Delaware
1/4 mile from intersection Kirkwood Hwy. Rt. 2

NEED A LAWYER?

Offering affordable legal services at
1400 Peoples Plaza, Suite 121

EXPERIENCE COUNTS
Over 25 years in practice

- Auto Accidents
- Divorce & Custody
- PFA
- Work Injuries
- Bankruptcy
- Criminal Law/DUI

Our firm's goal is to provide affordable legal services to our clients. We utilize a team approach combining the efforts of experienced paralegals and attorneys, coupled with aggressive, affordable representation, maximizing your recovery, protecting your rights, to provide the most effective personal legal services available.

Rahaim & Saints

ATTORNEYS AT LAW

1400 Peoples Plaza
Suite 121
Newark, Delaware

302-832-1800
www.rahaimandsaints.com

2055 Limestone Road
Suite 211
302-892-9200

Do You Have Indoor Air Pollution?

STANLEY STEEMER.
CLEANS AIR DUCTS



Trained &
Certified by

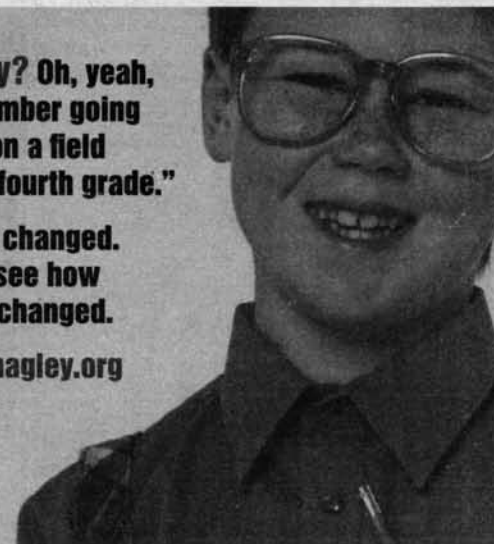


STANLEY STEEMER.
302.322.5511

"Hagley? Oh, yeah,
I remember going
there on a field
trip in fourth grade."

You've changed.
Come see how
we've changed.

www.hagley.org



10% OFF
Military w/D
20% OFF
Student w/D

FIRST
STATE
DINER

Children
Eat Free with
Adult Breakfast
or Lunch

Grand Reopening

Breakfast Special

Monday - Friday

2 eggs, home fries, any type of toast, w/coffee - Only \$2.99

Add meat for an additional \$1 - limited time offer
6 - 11 am

10% OFF
Entire Check

*Valid Saturday and Sunday
w/this coupon. Not to be
combined w/other offers.
Expires 11/30/09.

20% OFF
Lunch

*Valid Monday - Friday
w/this coupon. Not to be
combined w/other offers.
Expires 11/30/09.

Hours:
6 am - 2 pm, Mon. - Fri.
6 am - 3 pm, Sat. & Sun.

*We can accommodate later reservations.

1108 S. College Ave.
Newark, DE 19713
302-738-8700

www.firststatediner.com

SAVE MONEY THIS WINTER!

Schedule Burner Service Now! Oil, Gas & Electric

410-398-1530 www.CrouseBrothersHVAC.com

CROUSE BROTHERS HVAC



**CROUSE BROTHERS
HVAC**

HEATING AND AIR CONDITIONING
COMMERCIAL REFRIGERATION

410-398-1530

GEOTHERMAL
SYSTEMS

Serving you Since 1952



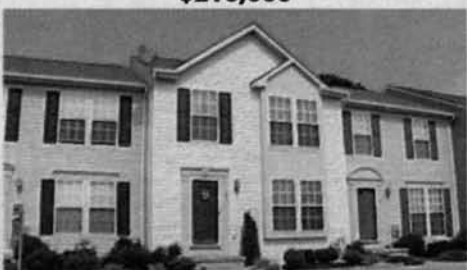
Glen Williams 302-631-1668 Karla Woods 302-631-1644 Kathy Nguyen 302-631-1650 Luz Ruiz 302-631-1678 Rochellda Adderley 302-631-1676 Theresa Valle 302-631-1664

45 Cordele Road, Newark
\$219,995



Bang for the buck! Roomy Colonial boasts wood floors, family rm., fireplace, first floor office and spacious screened porch. Master suite has dressing area and walk-in plus full bath. All appliances.
Call Rob Medicus, 302-631-1677

39 N. Bellwoode Drive, Newark
\$210,000



Well maintained 3 bedroom, 2.2 bath townhome w/excellent storage space. Great for growing family. Nice backyard for safe play!
Call Rochellda Adderley 302-631-1676

201 Meriden Drive, Newark
\$239,900



3 bedroom, 2 bath ranch just minutes from U of D, White Clay Preserve and shopping. Hardwood floors. 2 car garage and huge screened porch. One floor living at its finest. HVAC and water heater are new.
Call Glen Williams, 302-631-1668

112 Amerina Drive,
Bear
Just Reduced
\$179,900

Sunny end unit townhome full of amenities. Fenced side and rear yard w/custom octagonal deck off spacious eat-in kitchen. Finished basement w/ full bath. Lots of closet space. Fresh paint. New HVAC system.
Call Maria Ruckle, 302-631-1686

Prudential
302-368-1621

Fox & Roach REALTORS.
NEWARK MARKETING CENTER
850 Library Ave., Newark, DE 19711

IN THE NEWS

City staff smaller

► BUDGET, from 1

In 2009, personnel costs were reduced by \$650,000. In the proposed budget, eight full-time equivalent positions will be cut resulting in the largest reduction in city staff levels in over 30 years. The city's health plan benefits will be changed resulting in cost savings of over \$260,000. Materials and supplies and other expenses are being reduced.

The 2010 budget proposes to diversify revenues by identify-

ing revenue sources outside of the property tax. A stormwater utility is proposed, which reduces the reliance on the property tax rate for funding of stormwater related expenditures. This budget also proposes adding apartment complex businesses to the list of businesses being charged for dumpster collection. The addition of the two fees will result in \$700,000 in revenue.

Additionally, the 2010 budget proposes to increase sewer rates by 25% effective February 1, 2010 in order to cover the

costs associated with the city's sewer utility.

Last year's proposed budget forecast the need for a total property tax rate increase over two years of 20 cents. Last year, the council adopted a 2.25 cent increase in property taxes.

With the cost reductions and revenue diversification in the proposed 2010 budget, it will not be necessary to achieve the full 17.75 cent increase that last year's proposed budget forecast. Instead, a 9 cent tax rate increase is proposed.

10% OFF
w/coupon

Japanese Cuisine
Eat In & Take Out
Meadowood Shopping Center
2653 Kirkwood Highway
Newark, DE 19711
Tel: 302.366.1188
Fax: 302.366.1888
www.sushisumodelaware.com

Real Services Estate

CecilBANK
www.cecilbank.com

410-392-LEND

Call Sandy Feltman or John Ness for all your financing needs

Local Lending with Local Servicing • Fixed and adjustable Rate Mortgages
• Construction to Permanent • 1st Loans • Bridge Loans
30 YEAR TERM AVAILABLE • FREE PRE-QUALIFICATION • NO APPLICATION FEES

To reserve your space call: Michael Adams
443-245-5031 • 800-220-3311

NP070309

Bring In for Special Offer

50% OFF
Rebate On Your First
Interest Payment!

NO
CREDIT
CHECK

Payday Loans up to \$1,000

Takes 15 Minutes

JUST BRING IN:

• Valid driver's license • Most recent pay stub • Most recent bank statement • Check Book

Don't let money get in the way of what you need.

EZ LOANS
661 College Square, Newark DE
(302) 709-3340

322 Fox Hunt Dr. Bear, DE (302) 834-1800

Not valid with any other offer - New loans only. Only one coupon per 90 days. Payday advances should be used for short-term financial needs only, not as a long-term financial solution. Customers with credit difficulties should seek credit counseling.

Toll FREE: 877-297-0011 • ezloansdelmarva.com

302028 NP070309

Visit us online at www.newarkpostonline.com

IN THE NEWS

▶ **BLOTTER, from 2**

contacted by the investigating officer. The seller stated he purchased the car from a listing on Craigslist. The stolen car was recovered from the seller.

After a series of computer traces based on the Craigslist entry, it was found that the Craigslist posting was made from a computer on Peach Road, Elkton, Md. The investigation ultimately revealed that an 18 year-old male from that address and a 17 year-old co-conspirator were responsible for the vehicle theft.

The defendants' original plan was to rummage through cars and steal items from within. However, when the key was found inside the Camry, they decided to steal the car. They posted the car on Craigslist on the date of the theft, and sold it for \$600 later that same day.

Craig Cunha of the Peach Road address was arrested on October 27 and charged with one count of Felony Theft and one count of Conspiracy 2nd Degree. He was released on unsecured bail. A warrant has been obtained for the 17 year-old co-defendant, who is from Lebanon, PA.

▶ **Front door damaged**

On Friday October 30, at 5:31 a.m. the Newark Police Department responded to a burglary alarm at the Fairfield News located in the Fairfield Shopping Center on New London Road. Upon officer's arrival, the front door to the business had been damaged, however, no entry was made into the store.

Surveillance video provided a suspect description: dark hooded sweatshirt, white t-shirt

underneath, dark jeans, brown boots, 20-30 years of age, and 5'10"-6'00". Further the suspect was operating a dark colored 4-door (possibly Dodge) vehicle with a Delaware tag.

The individual has a similar description to the suspect that committed the burglary at Tobacco Zone on S. College Ave. on October 25. The way the front door was forced open is similar in both robberies. Photos of the suspect are available on newarkpostonline.com.

▶ **Suspects steal from tip jar**

Police are investigating two unknown suspects who stole an unknown amount of money from a tip jar at the Dunkin Donuts at 1002 S. College Ave. on Sunday afternoon. An employee at the business reported that two black males, 5'6" to 5'8" tall, weighing 140 to 160 pounds, ages 18 to 20 years old, had ordered food and coffee.

When the employee turned around to fix the order, he noticed one of the suspects taking several bills from the jar. When confronted, the duo ran from the store and entered a silver, four-door vehicle that traveled southbound on S. College Ave. A set of car/house keys was left on the counter. Video surveillance is being reviewed for additional information.

▶ **Robbery suspects arrested**

New Castle County Police have arrested two suspects Saturday for an armed robbery of a male who was attempting to purchase marijuana in the Cedarwood Apartments.

Police were dispatched

to 758 Christiana Road in the Ogletown area, south of Newark, for a report of an armed robbery.

When police arrived, they found a 20 year-old male and his girlfriend who reported they had just been robbed at gunpoint by three suspects. The victims indicated the suspects had fled in a black Acura TSX 4-door vehicle.

Several officers responded to the call and began searching the area. Corporal Joseph Krajewski

located a black Acura TSX traveling in the area of Route 273 and Route 7 that was occupied by two subjects. A computer inquiry revealed the owner (Stephanie Nesmith) had a warrant for her arrest.

Krajewski stopped the car and took the two occupants into custody after learning they both had outstanding arrest warrants. Both suspects were later linked to the robbery after the victims property was recovered inside the car. The third suspect and the shotgun were not recovered.

The investigation found the male victim and his girlfriend had agreed to meet a male subject at the apartment complex to purchase marijuana.

When they arrived at the apartment, a male subject approached them and pointed a shotgun at the male victim. The subject and two females then fled in the Acura.



Nesmith



McCleary

The two suspects, listed below, have been charged with two counts of robbery, possession of a firearm during the commission of a felony, aggravated menacing, and conspiracy:

- Stephanie Nesmith, a 20 year old female who resides in the 7400 block of Georgian Road in Philadelphia.

- Floyd McCleary, a 20 year old male who resides in the unit block of Carvel Avenue in New Castle.

Both suspects have been arraigned and committed to prison after failing to post secured bail.

▶ **Driver intentionally hits Todd Estates man with auto**

New Castle County Police have arrested Craig Augustyniak, 21, of North East, Md. for allegedly hitting a pedestrian with his car during a dispute south of Newark. After striking the male victim with his car, he drove off

leaving the injured man on the side of the roadway.

At 9 p.m., Monday, County Police responded to the area of Kirkwood Highway and Farrand Drive, in the Prices Corner area, for a report of two vehicles that were chasing each other in a reckless manner. One of the drivers called 911 and reported he was being threatened by the operator of a car that was following him.

The officers stopped the cars and discovered the driver of a black Chevrolet Cavalier was being chased by another car, with incident starting in the Brookside area, near Newark. The investigation revealed the driver of the Cavalier (Craig Augustyniak) had been involved in a dispute with a male pedestrian on Bethel Court in the community of Todd Estates.

Augustyniak reportedly drove his car directly at the pedestrian and struck him. The pedestrian remained on the hood for a short distance before being thrown to the ground, causing

non-life threatening injuries. A relative of the pedestrian then started chasing Augustyniak as he fled the scene.

Augustyniak has been charged with felony assault, possession of a deadly weapon during the commission of a felony, leaving the scene of an accident, reckless driving and failure to report an injury crash. He was later arraigned and committed to the Howard Young Prison after failing to post \$33,600 secured bail.

▶ **POST STUMPER SOLVED**

JONAH	ETTE	VERA
ALICE	BOOM	ITEM
MINER	ERRS	SODA
EVE	BERET	CANON
SERPENT	IRAS	
IRS	FLED	PEA
FLOAT	SALES	LADY
LOON	FATAL	ALEE
OPPOSITES	EVEN	SENS
WES	URIS	JAI
ELMS	GARNERS	
FLASK	FEIGN	BIT
AIN	SILL	ERODE
SANE	HEAD	SINGE
TREE	EDNA	TOYED

▶ **STATEMENT OF OWNERSHIP
MANAGEMENT AND CIRCULATION
(Required by 39 USC 3685)**

- Title of Publication: Newark Post
- Publication No. 6465
- Date of Filing: October 27, 2009
- Frequency of Issue: Weekly
- No. of Issues Published Annually: 52
- Annual Subscription Price: \$16.95
- Complete Mailing Address of Known Office of Publication: 218 E. Main St., Suite 109, Newark, DE 19711
- Complete Mailing Address of Headquarters or General Business Office of Publisher: Same
- Full Names and Complete Mailing Addresses of Publisher: David Fike; Editor: Doug Rainey, 218 E. Main St., Suite 109, Newark, DE 19711
- Owner: ACM Chesapeake LLC., 29088 Airpark Rd., P.O. Box 600 Easton, MD 21601
- Known Bondholders, Mortgagees, and Other Security Holders Owning or Holding 1 Percent or More of Total Amount of Bonds, Mortgages, or Other Securities: Macquarie Media Group, 1420 N. Mockingbird Ln. Suite 100, Dallas, TX 75247; Royal Bank of Canada (RBC) Capital Mkts., One Liberty Plz. 165 Broadway, New York, NY 10006; GE Commercial Finance Corp., 201 Merritt 7 Norwalk, CT 06851; Australia and New Zealand Banking Group, 1177 Ave. of Americas, New York, NY 10036; CIT, 44 Whippany Rd., Morristown, NJ 07960.
- Publication Title: Newark Post
- Issue Date for Circulation Data Below: September 25, 2009
- Extent and Nature of Circulation. a. Total Number of Copies (Net press run): Average No. Copies Each Issue During Preceding 12 Months: 3,100. No. Copies of Single Issue Published Nearest to Filing Date: 3,050. b. Paid Circulation (By Mail and Outside the Mail) (1) Mail Outside - County Paid Subscriptions Stated on PS Form 3541 (Include paid distribution above nominal rate, advertiser's proof copies, and exchange copies). Average No. Copies Each Issue During Preceding 12 Months: 1,292. No. Copies of Single Issue Published Nearest to Filing Date: 1,207. (3) Paid Distribution Outside the Mails Including Sales Through Dealers and Carriers, Street Vendors, Counter Sales, and Other Paid Distribution Outside USPS*. Average No. Copies Each Issue During Preceding 12 Months: 0. No. Copies of Single Issue Published Nearest to Filing Date: 0. (4) Paid Distribution by Other classes of Mail Through the USPS (e.g.

First-Class Mail®). Average No. Copies Each Issue During Preceding 12 Months: 0. No. Copies of Single Issue Published Nearest to Filing Date: 0. c. Total Paid Distribution (Sum of 15b (1), (2), (3), and (4)). Average No. Copies Each Issue During Preceding 12 Months: 1,385. No. Copies of Single Issue Published Nearest to Filing Date: 1,295. d. Free or Nominal Rate Distribution (By Mail and Outside the Mail). (1) Free or Nominal Rate Outside-County Copies Included on PS Form 3541. Average No. Copies Each Issue During Preceding 12 Months: 8. No. Copies of Single Issue Published Nearest to Filing Date: 8. (2) Free or Nominal Rate In-County copies Included on PS Form 3541. Average No. Copies Each Issue During Preceding 12 Months: 110. No. Copies of Single Issue Published Nearest to Filing Date: 108. (3) Free or Nominal Rate Copies Mailed at Other Classes Through the USPS (e.g. First-Class Mail). Average No. Copies Each Issue During Preceding 12 Months: 0. No. Copies of Single Issue Published Nearest to Filing Date: 0. (4) Free or Nominal Rate Distribution Outside the Mail (Carriers or other means). Average No. Copies Each Issue During Preceding 12 Months: 1,092. No. Copies of Single Issue Published Nearest to Filing Date: 1,047. e. Total Free or Nominal Rate Distribution (Sum of 15d (1), (2), (3) and (4)). Average No. Copies Each Issue During Preceding 12 Months: 1,210. No. Copies of Single Issue Published Nearest to Filing Date: 1,163. f. Total Distribution (Sum of 15c and 15e). Average No. Copies Each Issue During Preceding 12 Months: 2,595. No. Copies of Single Issue Published Nearest to Filing Date: 2,458. g. Copies not Distributed (See Instruction to Publishers #4 (page #3)). Average No. Copies Each Issue During Preceding 12 Months: 505. No. Copies of Single Issue Published Nearest to Filing Date: 592. h. Total (Sum of 15f and g). Average No. Copies Each Issue During Preceding 12 Months: 3,100. No. Copies of Single Issue Published Nearest to Filing Date: 3,050. i. Percent Paid (15c divided by 15f times 100). Average No. Copies Each Issue During Preceding 12 Months: 53%. No. Copies of Single Issue Published Nearest to Filing Date: 53%. 16. Publication of Statement of Ownership. If the publication is a general publication, publication of this statement is required. Will be printed in the 11/6/09 issue of this publication. 17. I certify that all information furnished on this form is true and complete, I understand that anyone who furnished false or misleading information on this form or who omits material or information requested on the form may be subject to criminal sanctions (including fines and imprisonment) and/or civil sanctions (including civil penalties).

William H. Sims
10/27/09

np 10/10/08

▶ **Buzby football preview**▶ **SPORTS, from 3**

between two schools many consider to be the best in their respective divisions. The Bucs must contain the Sals' big play capabilities early in order to stay close and try to grind out a win at the end. Sallies will need to control the Bucs' potent running backs Brandon Cheaton and Jordan Hutchinson.

Sallies coach Bill DiNardo: "Caravel is a great team, one of the top teams in Delaware. They are well coached and well prepared. Their key player is obviously Cheaton, who is a legitimate scholarship player.

But we can't forget about the rest of the team. Cheaton is surrounded by a great cast of athletic, aggressive players who have the ability to make plays. Our keys to success will be to control the line of scrimmage and stop the big play.

▶ **Hodgson (6-2, 4-1) at St. Georges Tech (1-7, 1-4)**

The Silver Eagles need to be careful not to look past either of its final two opponents, the first being a young St. Georges Tech team which would like nothing more than to treat its home fans to a huge upset as their season winds down.

Hodgson coach Frank Moffett Jr.: "We are looking to continue our winning ways. We want to continue getting better with our offensive running game and look to the play-action pass when opportunities arise. The defense has been getting better and looking to shut down the running attack of St. Georges."

▶ **News and Notes**

No. 4 St. Mark's (11-4) will host No. 13 Caravel Academy (12-3) on Saturday at 7 in opening round play of the girls' volleyball tournament.

Send your sports stories to jonbuzby@hotmail.com.

Now Accepting New Patients

Introducing
Premier Pediatrics, LLC



Caring for infants, children and adolescents
Convenient same-day sick, evening, and weekend appointments
available!



Bradley J. Smith,
MD, FAAP

302-836-4440



Rebecca A. Achterhof,
MD, FAAP

Premier Pediatrics, LLC
2600 Glasgow Avenue, Suite 213
Newark, DE 19702

Visit our website www.premier4kids.com for more information!

American Spirit...

where you're treated like an owner,
NOT a number!



American Spirit

Federal Credit Union

1110 Elkton Road, Newark, DE 19711

(302) 738-4515

Membership is open to anyone who:
lives • works • worships • goes to school or belongs to
any association in the City of Newark

www.americanspirit.org

got scrap?

TOP DOLLAR PAID FOR SCRAP!



LITE
IRON

#1
STEEL

**"CASH FOR ALL TYPES OF
METALS AND CARS!"**

WE BUY BATTERIES, COPPER, BRASS, ALUMINUM,
STAINLESS, ELECTRIC MOTORS, OLD FARM EQUIPMENT,
& COMPLETE JUNK VEHICLES!

ELKTON RECYCLING

410-392-2980

IN THE NEWS

OUT OF THE ATTIC

This week's Out of the Attic item is an undated picture of father and son recipients of the Silver Star earned during their military service. The picture was taken during a Newark Memorial Day Parade several years ago. Son Francis Ianni (l.), age 58 in the picture, served in Vietnam. Father Frank Ianni (r.), age 93 in the picture, served in World War I. Newarkers have always responded to the call to arms having served in the Revolution and every conflict since. Twenty-six of our sons gave their lives in World War II. At the eleventh hour on the eleventh day of the eleventh month in 1918 the Armistice was signed ending what was then called "the war to end all wars" (World War I). Armistice Day was thereafter observed on November 11 each year. In 1954 the name was changed to Veterans Day in appreciation of the service of all who have served in our armed forces – Air Force, Army, Coast Guard, Marines and Navy.

The picture is on loan to the Newark Post from the Newark Historical Society collection. The Society continues to seek pictures and other artifacts of places, activities, and life styles in the Greater Newark Area.

Contact the Newark Historical Society by voice mail at 302-224-2408, by postal mail to P.O. Box 711, Newark, DE 19715, or by email to newarkdehistoricalsociety@yahoo.com.



Locust Point Farm

Fresh Natural Turkeys

Taste the Difference!

ORDER NOW!
410-398-8766



We Repair — All Makes and Models

Authorized Service Center



Statewide Appliance Services, Inc.

Service Center: 302-893-2182

Parts Center: 1-877-636-8632

www.statewideappliance.com

310280 NP091109

Save Now for the Holidays Use Minster's Layaway

20% off, no fees, easy payments
New Minster Designs
ready for the Holidays

Minster's
of Newark
jewelers since 1895

Newark Shopping Center, Newark, DE

302-737-5947

Email: info@minstersjewelers.com

www.minstersjewelers.com

Handcrafted in our own shop



Large enough to offer a great selection,
small enough for friendly customer service!

CONTRACT LIQUIDATORS

The Furniture Store



Family Owned and Operated Since 1990!

312 South DuPont Hwy

New Castle, Delaware 19720

We're located just 1/4 mile south of the Route 13 & 40 Split!

302-328-8888

Monday-Thursday

11am - 7:30pm

Friday 11am - 8pm

Saturday 10am - 6pm

Sunday 12pm - 4pm

Immediate Pick up or Delivery Available on Most Items!

Layaway Available

90 Days Same as Cash

All Ashley Products Available

www.contractliquidatorsfurniture.com

Amputee Services

We Are Certified and Experienced
for All Amputation Levels



We Build & Design In-House:

- Lifelike Restorations & Specialty Designs
- Complete Prosthetic Limbs
- Routine Maintenance
- Insurance Verifications
- Warranty Service

Call for a Free Consultation:

Glasgow, DE (302) 392-1947

MD Offices, (410) 569-0606

MD Eastern Shore, (410) 810-1370

~Appearance~Mobility~Comfort

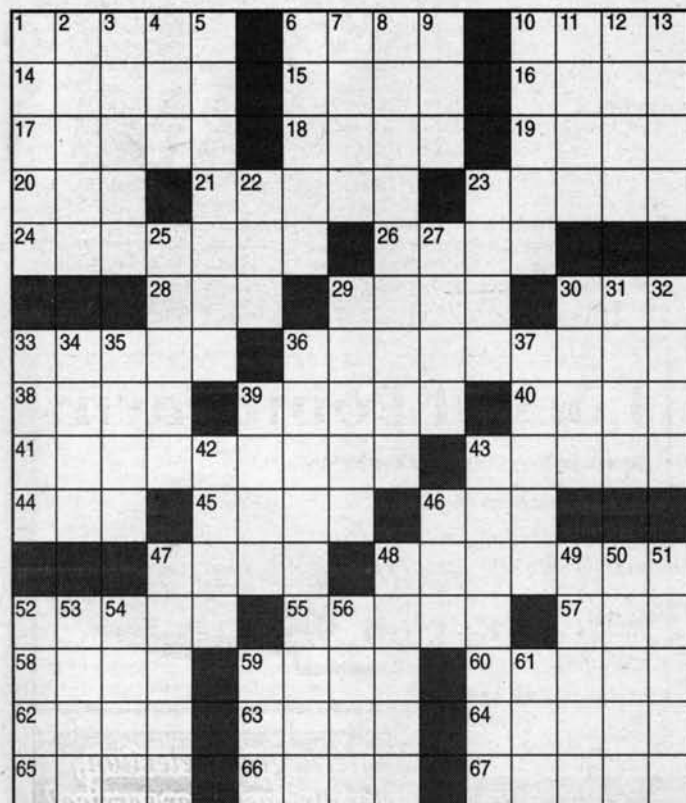
~Experience~Devotion & Care

www.RealLifeProsthetics.com



IN THE NEWS

THE POST STUMPER



ACROSS

1. Prophet swallowed by a fish
6. Major ender
10. Actress-dancer - Ellen
14. Carroll heroine
15. Word before box or town
16. News clipping
17. Appalachian occupation
18. Blunders
19. Baking
20. First lady
21. Flat cap
23. Musical form
24. *The Plumed* (D.H. Lawrence)
26. Gershwin et al.
28. Piper that's paid Apr. 15
29. Made tracks
30. Type of shooter
33. Fountain treat
36. Boutique employee
38. Diving bird
39. Deadly
40. Out of the wind
41. On and off, e.g.
43. Ties
44. Filmmaker Craven
45. *Mila 18* author
46. alai
47. Wahoo et al.
48. Amasses

DOWN

52. Pocket bottle
55. Pretend
57. Snaffle
58. "Got No" (Hair song)
59. Threshold
60. Wear away
62. Reasonable
63. Lettuce unit
64. Scorch
65. Fir, e.g.
66. Felix Unger's daughter
67. Trifled (with)
1. President Garfield
2. Greek export
3. Forty-
4. Fearless flier
5. Operetta composer Victor
6. Siskel's partner
7. Sped
8. Burrito wraps
9. Three-point Scrabble tiles
10. Passport stamps
11. Rival of Harrow
12. Use a decorator
13. Alone (Milland film)
22. Navy off.
23. Thugs
25. Eighty-eight
27. Spin

ANSWERS ON PAGE 18

Victory in West Chester

► LANDLORDS, from 1

Overtaking of the tax would increase the severity of the city's budget crunch, which has intensified, with the loss of real estate transfer tax revenue during the current downturn.

In a release, plaintiffs claimed the action is comparable to a recent one in which West Chester landlords prevailed against the Borough of West Chester, Pennsylvania.

In that case landlords sued when fees were raised from \$36

to \$42 per year. By the time the decision favoring the West Chester landlords was upheld in the Pennsylvania appeals court, West Chester ended up paying about \$1.2 million including refunds to landlords. Attorneys for Newark landlords expect a similar outcome here.

The plaintiffs are represented by Ronald M. Agulnick, who was one of the lawyers for the West Chester landlords, and by a team from the firm of Saul Ewing LLP, led by David R. Moffitt.

Remembering Mr. Poe

► POE, from 1

They continued with an ambitious reading of Poe's most famous work, "The Raven with impressive performances by Tanya Lzar, Dee Sobelman and Stacie Ruzi.

They finished the night on a high note with a spine-tingling interpretation of the short story, "The Tell-Tale Heart." Lzar

proved herself a master storyteller with fabulous intonation, animated body language and even a convincing cackle thrown in the mix for good measure. The final touch of choreographed voices mimicking a beating heart gave the café audience a case of sweaty palms that had nothing to do with the coffees they were holding.

- Melissa Marshall



ARDENT TITLE COMPANY

Susan M. Knight • Settlement Agent

149-151 E. Main Street, Elkton, MD 21921

(410) 996-9780 • Fax (410) 996-9784 • info@ardentitle.com

LENDER	Phone Number	15 YEAR Fixed % PTS. APR	30 YEAR Fixed % PTS. APR	1 YEAR ARM % PTS. APR	3 YEAR ARM % PTS. APR	5 YEAR ARM % PTS. APR
APGFCU	1-888-LOAN-391	5.375/0/5.51	5.375/0/5.8	6.50/0/4.016	5.875/0/4.253	6.375/0/4.744
CECIL BANK	(410) 398-1650	*PLEASE CALL FOR RATES				
CLASSIC MORTGAGE	(302) 366-1661	4.50/0/4.73	5.125/0/5.35		3.750/0/3.98	3.875/0/4.10
MBA FINANCIAL SERVICES	(410) 287-5600	Please call for quotes. Many programs. All credit considered.		100% financing available-Interest only options! 1st time home buyers, 2nd homes & investment properties.		
PEOPLES BANK OF ELKTON	(410) 996-2265	4.875/0/5.00	5.50/0/5.58	5.625/3.75/3.586	5.375/0/3.83	5.875/1.25/4.315
WILMINGTON MORTGAGE	(410) 398-5607	PLEASE CALL FOR RATES.		FREE PRE-APPROVAL - NO APPLICATION FEE		

These rates, effective 11/3/09, were provided by the lenders and are subject to change. Other terms may be available. These rates are for existing first mortgages. Points may vary on refinances. Down payment requirements may vary. *Caps and length may vary on adjustable rates. The APR is based on a \$100,000 mortgage with a 20% down payment and is in addition to interest included points fees & other credit costs. To list your mortgage rates, call our Real Estate Sales Division at 410 398-3311 or 1-800-220-3311. These mortgage rates are a paid advertising feature of the Cecil Whig

**WILMINGTON
MORTGAGE**

205 East Main Street, Elkton, MD 21921

Office: 410-398-5607 • TOLL FREE: 800-607-5607

Phil Davis
Loan OfficerKim Pettitt
Loan OfficerBruce Fink
Loan Officer

- 100% Financing
- USDA Rural Housing
- FHA
- VA
- Reverse Mortgages

Posted
8 AM - 5 PM
800-220-3311 410-398-1230

• Real Estate
• Automotive
• Help Wanted
• Services
• Merchandise

See More on
chesapeakeclassified.com

YARD SALES
• Auctions
• Appliances
• Furniture

Fax us 24/7: 410-398-4044



RENTALS

305 APARTMENTS UNFURNISHED

New Today

CHES CITY Efficiency apt on lovely horse farm. \$650/mo inclds heat. 410-885-2256

ELK NECK AREA. Sm. 1br, W/D. \$575 mo. + utils & dep. No pets. 410-398-4701

ELKTON. Room for rent in house. Full privs. \$500 per mo. 443-207-1378

LOSING YOUR HOME?
We can help!
1 & 2 BR APTS
\$495 and up
FREE STORAGE
Move in today!
BEACON
410-287-6111

New Today

N.EAST/ R. SUN apt on priv farm, 1br, study, LR, Kitch, Bath. Horse brding avail. \$750/mo. Non smok env. Avail 12/1. Call 610-212-3355

New Today

NORTH EAST 2br, \$700/mo + sec dep New kit. new flooring throughout fresh paint Updated bath Call 410-287-2233

LEGAL NOTICE

SHERIFF'S SALE

By virtue of a writ of Alias Lev Fac#21 SE, AD., 2009.
PARCEL NO. 12-019.00-231
PROPERTY ADDRESS: 44 Waterton Drive, Bear, Delaware 19701

ALL that certain piece, parcel or tract of land with the buildings thereon erected, situate in Red Lion Hundred, New Castle and State of Delaware, being Lot No. 55, on the Record Major Subdivision Plan of Red Lion Hunt, Phase 1, as recorded in the Office of the Recorder of Deeds in and for New Castle County, in Instrument #20031015-0132975, and being more particularly bounded and described, as follows, to-wit:

BEING the same lands and premises which Wade Robinson and Kenneth Calhoun, by Deed dated May 2007 and recorded in the Office of the Recorder of Deeds, in and for New Castle County and State of Delaware, in Deed Instrument #20070509-0042034, did grant and convey unto Donald Kinsey. The said Donald Kinsey is also known as Donald Kinsey.

SEIZED AND TAKEN IN EXECUTION AS THE PROPERTY OF DONALD KINSEY.

TERMS OF SALE: 10% DOWN AT TIME OF SALE. BALANCE DUE ON OR BEFORE DECEMBER 21, 2009.

SEPTEMBER 30, 2009
2100373

NORTH EAST 2br
1ba close to schools &
shops \$600/mo + sec
dep 410-398-6888

CLASSIFIEDS
410-398-1230
800-220-1230

New Today
NORTH EAST- 1 br
apt., \$700/mo + sec
dep. All utils fur-
nished. 410-287-6367

NORTH EAST/ FAIR HILL 1 bdrm apt
free, elct & ht. \$775.
302-420-3855

WWW.CHESAPEAKE CLASSIFIED.COM

LEGAL NOTICE

SHERIFF'S SALE

By virtue of a writ of Lev Fac#61 SE, AD., 2009.
Parcel No. 18-003.00-22
Property Address: 432 New London Road, Newark, DE 19711.

All that certain lot, piece or parcel of land with the improvements thereon, situate in the City of Newark, New Castle County and State of Delaware, being Lot. Number 19 as shown on the Record Plan of Fairfield Crest, of record in the Office of the Recorder of Deeds in and for New Castle County, Delaware in Microfilm No. 811, said lots also known as 432 New London Road and being more particularly bounded and described in accordance with a survey prepared by Zebbley & Associates, Inc., dated July 14, 2003, as follows, to-wit:

BEING the same lands and premises which Eileen C. Holtz and Peter Ford Holtz by Deed dated August 29, 2006 and recorded in the Office of the Recorder of Deeds, in and for New Castle County and State of Delaware, in Instrument Number 20060907-0085335, did grant and convey unto Eileen C. Holtz.

SEIZED AND TAKEN IN EXECUTION AS THE PROPERTY OF EILEEN C. HOLTZ.
TERMS OF SALE: 10% DOWN AT TIME OF SALE. BALANCE DUE ON OR BEFORE DECEMBER 21, 2009.

SEPTEMBER 30, 2009
2100383

RECLINE, RELAX & RESELL

SHERIFF'S SALE

By virtue of a writ of Lev Fac#17 SE, AD., 2009.
PARCEL NO: 10-039.30-172
PROPERTY ADDRESS: 22 Printz Drive, Bear, DE 19701

All that certain lot, piece or parcel of land, with the buildings thereon, situate in New Castle Hundred, New Castle County, Delaware being designated as Lot 39, as shown on the Record Resubdivision Plan of Stone Mill of record in the Office of the Recorder of Deeds in and for New Castle County, Delaware in Microfilm No. 13816 said lot also known as 22 Printz Drive and being now more particularly described according to a recent mortgage inspection plan prepared by A.E.S. Surveyors, dated October 23, 2000, as follows, to-wit:

BEING the same lands and premises which NVR, Inc. by Deed dated November 15, 2000 and recorded in the Office of the Recorder of Deeds, in and for New Castle County and State of Delaware, in Deed Book 2925, Page 70, did grant and convey unto Deborah J Weber.

SEIZED AND TAKEN IN EXECUTION AS THE PROPERTY OF DEBORAH J. WEBER.
TERMS OF SALE: 10% DOWN AT TIME OF SALE. BALANCE DUE ON OR BEFORE DECEMBER 21, 2009

SEPTEMBER 30, 2009
2100369

LEGAL NOTICE

SHERIFF'S SALE

By virtue of a writ of Alias Lev Fac#35 SE, AD., 2009.
Parcel No: 10-032.20-271
Property Address: 14 Gershwin Circle, Newark, DE 19702.

ALL THAT certain lot, piece or parcel of land with the dwelling thereon erected, situate in New Castle Hundred, New Castle County and State of Delaware, and being Lot No. 290 as shown on the Record Resubdivision Plan of Taylortowne, as said plan is of record in the Office of the Recorder of Deeds in and for New Castle County, Delaware in Microfilm No. 5753 and being more particularly bounded and described as follows, to-wit:

Being the same lands and premises which Andrew M. Cuomo, did grant and convey unto Nathan E. Berry and Tashel R. Berry, by deed dated March 27, 2000 and recorded on May 4, 2000 in the Office of the Recorder of Deeds, in and for New Castle County, State of Delaware, in Deed Book 2822 at Page 124.

SEIZED AND TAKEN IN EXECUTION AS THE PROPERTY OF NATHAN E. BERRY AND TASHEL R. BERRY.
TERMS OF SALE: 10% DOWN AT TIME OF SALE. BALANCE DUE ON OR BEFORE DECEMBER 21, 2009.

SEPTEMBER 30, 2009
2100376

SHERIFF'S SALE

By virtue of a writ of Lev Fac#104 SE, AD., 2009.
Parcel No: 09-030.30-116
Property Address: 1803 Lowland Way, Newark, DE 19702.

ALL that certain lot, piece or parcel of land with the buildings thereon, situate in 1803 Lowland Way, said lot being designated Lot 57 on the Record Resubdivision Plan of Christiana Village of record in the Office of the Recorder of Deeds in and for New Castle County, State of Delaware in Microfilm No. 4260 and being more particularly bounded and described in a recent mortgage inspection plan prepared by East Coast Survey, dated November 10, 2006, as follows, to-wit:

Being the same lands and premises which David J. Attarian, did grant and convey unto D B Pinnacle Properties, LLC, by deed dated March 12, 2007 and recorded on March 14, 2007 in the Office of the Recorder of Deeds, in and for New Castle County, State of Delaware, in Deed Instrument 20070314-0024432.

SEIZED AND TAKEN IN EXECUTION AS THE PROPERTY OF DAVID J. ATTARIAN.
TERMS OF SALE: 10% DOWN AT TIME OF SALE. BALANCE DUE ON OR BEFORE DECEMBER 21, 2009.

SEPTEMBER 30, 2009
2100499

SHERIFF'S SALE

By virtue of a writ of Lev Fac#102 SE, AD., 2009.
Parcel No: 09-040.20-128
Property Address: 418 Jaymar Boulevard, Newark, DE 19702.

ALL that certain land, piece or parcel of land situate in White Clay Creek Hundred, New Castle County and State of Delaware being Lot 444 according to the Record Resubdivision Plan of Salem Woods, Phase II as recorded in the Office of the Recorder of Deeds in and for New Castle County in Microfilm No. 9266 and being more particularly bounded and described in accordance with a recent survey by East Coast Survey, dated April 5, 2007, as follows, to-wit:

Being the same lands and premises which Carols R. Rodriguez and Susan T. Rodriguez, did grant and convey unto and Dorrita Thomas Brown and Cliff Thomas, by deed dated May 17, 2007 and recorded on May 18, 2007 in the Office of the Recorder of Deeds, in and for New Castle County, State of Delaware, in Deed Instrument 20070518-0045339.

SEIZED AND TAKEN IN EXECUTION AS THE PROPERTY OF DORRITA THOMAS BROWN AND CLIFF THOMAS.

TERMS OF SALE: 10% DOWN AT TIME OF SALE. BALANCE DUE ON OR BEFORE DECEMBER 21, 2009.

SEPTEMBER 30, 2009
2100496

10 PUBLIC NOTICES

PUBLIC NOTICE

View Public Notices from around the State of Maryland, visit:

www.publicnoticeads.com/md

40 LOST & FOUND

LOST black high school varsity jacket with gold trim on cuffs & collar, with sewn on patch of Indian head with the school name Canajoharie. **Lost** around Rt 896 Newark area. **Reward offered** 302-368-7818

SHEPHERD MIX male puppy, **FOUND.** 10/23 at Chesapeake Inn & Marina. Call 302-229-5880

70 HAPPY ADS



NEW BABY IN THE FAMILY?
Show him or her off to your family and friends! Call classified today and we can place a birth announcement as early as the next day! We can even include a photo. Call 410-398-1230 or email to classads@chespub.com

Are You Ready To Fill These Shoes?

Check Our Classified Pages Everyday For The Latest Job Opportunities

Let Chesapeake Classifieds Work For You!

Here's My Card

Local Businesses At A Glance



CONSTRUCTION

Free Estimates Voice Mail 717-786-0271

Double E Construction Ltd.
Quarryville, PA

- New Construction
- Roofing & Siding
- Barns & Garages
- Additions
- Decks

Custom Built To Fit Your Needs

Ephraim Smucker Customer Satisfaction Keeps Us In Business

SEWING SERVICE

Custom Windows • Draperies • Cornices • Swags
Valances • Bed Ensembles • Pillows • Installations



SEAMS TO BE BY "E"

Excellent Selection of Fabrics
Convenient Shop at Home Service
Lic. & Ins • All Work Gtd. • Ref. Available
(302) 368-3887

TREE PLANTING

LEYLAND CYPRESS TREES
FREE Delivery And Planting
6 Month Warranty

Trees 2 to 2 1/2 ft. each.....\$15.00
Trees 3 1/2 to 4 ft. each.....\$25.00
Trees 4 1/2 to 5 ft. each.....\$40.00
Other Trees Available

302-344-3696

To advertise your services in Here's My Card



Call Susie Moore
410-398-3311 ext. 3004
Cell: 302-650-0212

315 HOUSES FOR RENT

New Today
CHARLESTOWN-
 3 br, LR, DR, kit,
 1 bath. 2 blocks from
 water, large yard,
 \$775/mo + sec dep.
NO PETS! 410-287-
 5264

New Today
CECILTON- Duplex,
 like new., 2 lg Br's,
 1.5Ba. Washer/
 dryer. \$975/mo +
 util's. 410-275-6101

New Today
ELKTON 3600 sq ft
 warehouse 3600 sq ft
 office & show room
 total 7200 sq ft,
 fenced w/camera, a/c,
 also shop & office
 2000 sq ft **302-593-
 0262**

New Today
ELKTON, MD- 3br, 2
 ba, all amenities, 15
 secluded ac, hunting,
 Pets ok. \$2000/mo +
 sec. Avail now. Call
410-703-8709

New Today
ELKTON HEIGHTS
 3 BR, 1BA, fenced
 yard, Rent with option
 to buy. pet neg. \$1200
 /mo 410-392-0781

New Today
ELKTON
 Hollingsworth Manor,
 Rd #5 2br \$650/ mo +
 sec dep & utils. No
 pets. **410-392-3127**

New Today
ELKTON
 Hollingsworth Manor,
 Rd #5 2br \$650/ mo +
 sec dep & utils. No
 pets. **410-392-3127**

New Today
ELKTON in town,
 3br, 1.5ba, gar., lg yd
 single family home,
 \$750/mo + sec dep
 410-398-0159

New Today
ELK MILLS 3Br,
 2.5ba single family
 home. \$1050 per
 month. 443-553-5334

ELKTON 3br, 1ba,
 lg yd, pets considered
 \$925/mo + sec. dep.
410-398-6888

New Today

ELKTON 3Br, 2Ba,
 fam rm, lg frnd yd, gas
 ht, c/a. Dogs ok.
\$1375. 410-620-3626

ELKTON Heights
 2br, 1ba, LR, w/d shed
 newly renov no pets
\$850/m 410-398-9422

STONE T/H
 2 decks. Kitchen
 appls incl. Elkton.
 Great neighborhood.
 Pleasant landlord.
410-620-1345

SR40 GLASGOW
PINES T/H, 3br, 1.5
 ba, shed @ \$1000/mo
 + sec. avail. Nov 5.
 410-441-1364

320 WATERFRONT RENTALS**New Today**

NORTH EAST spa-
 cious 2br apt 2ba,
 master bedroom
 walkin closet, laundry
 room w/ washer/
 dryer, cathedral ceil-
 ings, wrap a round
 deck (sunset western
 view) nice yard.
\$1300/mo + utils. Call
**410-287-8118 or 410-920-
 8006 or 410-920-
 6044**

Classified
 is the
 key
 to more
 sales.

New Today

NORTH EAST- Spa-
 cious 3 br, patio, semi
 private pier, w/d incl.,
 1 ba, walk in closets,
 nice yard (sunset view
 of water) \$1200/mo +
 utils. Call 410-287-
 8118 or 410-287-8006
 or 410-287-6004

332 TOWNHOUSE FOR RENT

ELKTON 2br 1.5 ba
 w/d, close to schools
 & shops \$795/mo +
 sec dep **410-398-6888**

ELKTON Walnut Hill
 3br 1.5 ba all brick, 2
 dks, starting @ \$1050/
 mo **410-398-5724**

NORTH EAST
 Hickory Dr, 3br, 1.5ba,
 2 dks \$1050/mo pets
 ok **443-309-0385**

335 DUPLEXES FOR RENT**New Today**

ELKTON- Hollings-
 worth Manor - 2br,
 duplex \$600/mo + sec
 dep No pets. 410-398-
 0843 or 443-350-2011

350 To Share

New Today
CHESAPEAKE
CITY Sunny room for
 rent on water. \$550
 per mo. 443-760-
 6392

365 COMMERCIAL RENTALS

RT 40 / ELKTON
 Office spaces 3000 sq
 ft & 1250 sq ft great
 location & parking
 410-392-3676

CHESAPEAKE CLASSIFIEDS
410-398-1230 800-220-1230
www.chesapeakeclassified.com

**REAL ESTATE**

WWW.CHEESAPEAKE
CLASSIFIED.COM

440 LOTS/ACREAGE FOR SALE

2.39 AC W/ POND
 in established West
 Newark community.
\$169,900. Call Susan
Fitzwater, RE/MAX
**1st Choice 302-378-
 8700 or 302-893-
 0368**

**SERVICES****520 HOME IMPROVEMENT SERVICES****New Today**

APPLIANCES,
 heating repair, big
 screen tv & your
 whole to do list. Call
 24/7 Express Repairs
 410-689-8600 BBB A
 rated.

RID YOUR HOME OF
ALL THAT CLUTTER!
HAVE A YARD SALE
AND ADVERTISE IT
WITH US!

LEGAL NOTICE**SHERIFF'S SALE**

By virtue of a writ of Third Pluries Lev Fac#123
 SE, AD., 2009.
 Parcel No: 11-021.10-136
 Property Address: 12 Castlegate Court,
 Newark, DE 19702.

ALL that certain lot, piece or parcel of land
 with the improvements erected thereon situate
 in Pencader Hundred, New Castle County,
 Delaware being designated Lot 15 as shown
 on the Record Major Subdivision Plan of
 Woodland Village of record in the Office of the
 Recorder of Deeds in and for New Castle
 County, Delaware on Microfilm No. 12641,
 said lot also known as 12 Castlegate Court
 and being more particularly bounded and
 described in accordance with a recent mort-
 gage inspection plan by A.E.S. Surveyors
 dated August 7, 1997, as follows to wit:

Being the same lands and premises which
 NVR Homes, Inc. did grant and convey unto
 Herbert L. Custis and Katherine Custis by
 deed dated August 7, 1997 and recorded on
 August 15, 1997 in the Office of the Recorder
 of Deeds, in and for New Castle County, State
 of Delaware in Deed Book 2314, Page 0102.
SEIZED AND TAKEN IN EXECUTION AS
THE PROPERTY OF HERBERT L. CUSTIS
AND KATHERINE CUSTIS.

TERMS OF SALE: 10% DOWN AT TIME OF
SALE. BALANCE DUE ON OR BEFORE
DECEMBER 21, 2009.

SEPTEMBER 30, 2009
2100507

THE COURT OF COMMON PLEAS FOR THE STATE OF DELAWARE IN AND FOR NEW CASTLE COUNTY

IN RE: CHANGE OF
NAME OF
 Clare Hastings Gask-
 ins

PETITIONER(S)
 TO
 Clare Smith Gaskins
NOTICE IS HEREBY
GIVEN that Clare
 Hastings Gaskins
 intends to present a
 Petition to the Court of
 Common Pleas for the
 State of Delaware in
 and for New Castle
 County, to change
 his/her name to Clare
 Smith Gaskins

Clare Gaskins
Petitioner
DATED: October 27,
2009

np 11/6,13,20
2107720

THE COURT OF COMMON PLEAS FOR THE STATE OF DELAWARE IN AND FOR NEW CASTLE COUNTY

IN RE: CHANGE OF
NAME OF
 Linda Goldman

PETITIONER(S)
 TO
 Linda Lateshia Stans-
 bury
NOTICE IS HEREBY
GIVEN that Linda
 Goldman intends to
 present a Petition to
 the Court of Common
 Pleas for the State of
 Delaware in and for
 New Castle County,
 to change his/her name
 to Linda Lateshia
 Stansbury.

Linda Goldman
Petitioner
DATED: 10/21/09

NP 11/6,13,20
2106691

THE COURT OF COMMON PLEAS FOR THE STATE OF DELAWARE IN AND FOR NEW CASTLE COUNTY

IN RE: CHANGE OF
NAME OF
 Keith Simmons

PETITIONER(S)
 TO
 Ra-tru Rallah Born
NOTICE IS HEREBY
GIVEN that Keith
 Lamonte Simmons
 intends to present a
 Petition to the Court of
 Common Pleas for the
 State of Delaware in
 and for New Castle
 County, to change
 his/her name to Ra-tru
 Rallah Born.

Keith Simmons
Petitioner

DATED: 10/26/09
NP 11/6,13,20
2106685

LEGAL NOTICE
CITY OF NEWARK
DELAWARE
BOARD OF ADJUSTMENT
PUBLIC HEARING

NOVEMBER 19, 2009 - 7:30 P.M.

Pursuant to Chapter 32, Article XIX of the
 Code of the City of Newark, Delaware, notice
 is hereby given of a public hearing at a regular
 meeting of the Board of Adjustment on Thurs-
 day, November 19, 2009 at 7:30 p.m. in the
 Council Chamber, Newark Municipal Building,
 220 Elkton Road, Newark, Delaware, to hear
 the following application:

1. Appeal of Richard and Patricia Meier, for
 the property at 804 Rock Lane, for the follow-
 ing variance:

a) Ch. 32, Sec. 32-9 (c)(5)(c) - The pro-
 posed covered porch is 23.5 feet from the front
 property line. A 25 foot setback is required for
 RS zoning.

ZONING CLASSIFICATION: RS

The applications and related materials may
 be examined at the City Secretary's Office,
 366-7070, prior to the meeting.

Clayton S. Foster
Chairman
2108036

np 11/6

SHERIFF'S SALE

By virtue of a writ First Pluries Lev Fac#18 SE,
 AD., 2009.
PARCEL NO. 10-032.40-100
PROPERTY ADDRESS: 6 Wright Circle,
Newark, DE 19702

All that certain lot, piece or parcel of land,
 with the building thereon erected, known as 6
 Wright Circle, situate in New Castle Hundred,
 New Castle County and State of Delaware,
 and being Lot No. 116 of the subdivision of
 Taylortowne, Microfilm Number 4188, and
 being more particularly bounded and
 described in accordance with a survey by The
 Pelsa Company dated September 8, 1993.

BEING the same lands and premises which
 Susan M. Lord did by deed dated August 29,
 2007 and recorded in the office aforesaid in
 Instrument No. 20070920-0083553 did grant
 and convey unto Frank Lare.

SEIZED AND TAKEN IN EXECUTION AS
THE PROPERTY OF FRANK LARE.

TERMS OF SALE: 10% DOWN AT TIME OF
SALE. BALANCE DUE ON OR BEFORE
DECEMBER 21, 2009

SEPTEMBER 30, 2009
2100371

Visit one of these local dealers
and drive home happy!

Contact
Laurie To
Advertise
HERE

STAPLEFORD'S
CHEVROLET
OLDSMOBILE
302-834-4568



ST. GEORGES, DE

VOLKSWAGEN

Smith

VOLKSWAGEN LTD.
4304 Kirkwood Highway,
WILMINGTON, DE
302-998-0131
Drivers wanted

Contact
Laurie To
Advertise
HERE

410-398-1230
800-220-1230

Lamici@
chespub.com

REACH OVER 50,000 READERS WEEKLY!
Call Laurie at 800-220-3311 to Advertise Here!

CITY OF NEWARK
DELAWARE
COUNCIL MEETING AGENDA
November 9, 2009 - 7:30 PM - CC

ACTION TAKEN

1. SILENT MEDITATION & PLEDGE OF
 ALLEGIANCE
 2. CITY SECRETARY'S MINUTES FOR
 COUNCIL APPROVAL:

A. Regular Council Meeting of October 26,
 2009

3. ITEMS NOT ON PUBLISHED AGENDA:
 A. Public (5 minutes per speaker)
 B. University

(1) Administration
 (2) Student Body Representative
 C. Council Members

4-A. ITEMS NOT FINISHED AT PREVIOUS
 MEETING: None

4-B. FINANCIAL STATEMENT

5. RECOMMENDATIONS ON CONTRACTS
 & BIDS:

A. Recommendation to Waive the Bidding
 Requirement and Extend Contract 06-01 Elec-
 tric Line Tree Trimming Contract For One
 Additional Year

B. Recommendation to Waive the Bidding
 Requirement and Extend Contract 07-01 -
 Mowing of Reservoir and Basin/Open Space
 Areas

*6. ORDINANCES FOR SECOND READING
 & PUBLIC HEARING: None

*7. PLANNING COMMISSION/DEPART-
 MENT RECOMMENDATIONS:

A. Request of Mark D. Sisk, Esquire, Agent
 for Claire and Andrew Scott Lawing, for a Spe-
 cial Use Permit Required for a Home Occupa-
 tion Assembling "Custom Guitar Pickups" for
 Electric or Electric/Acoustical Guitars at 416
 Paper Mill Road

B. Request of Keith and Michelle Jones, 7
 New Casho Mill Road, for a Special Use Per-
 mit Required to Expand their Existing Asphalt-
 Driveway within the Open Floodway District
 (100-Year Floodplain)

8. ORDINANCES FOR FIRST READING:
 A. Bill 09-37 - An Ordinance Amending
 Chapter 32, Zoning, Article XXI, Amendment,
 Code of the City of Newark, Delaware, By
 Amending Amendment Procedure to Require
 Site Postings

ACTION TAKEN: 2ND READ 12/14/09

B. Bill 09-38 - An Ordinance Amending
 Chapter 25, Sewers, By Revising the Sewer
 Charges for All Customers Effective February
 1, 2010 and Providing Authorization to Staff to
 Automatically Adjust Sewer Service Unit
 Charges When New Castle County Imposes
 Relevant Adjustments

ACTION TAKEN: 2ND READ 11/23/09

9. ITEMS SUBMITTED FOR PUBLISHED
 AGENDA:

*A. COUNCIL MEMBERS

1. Resolution 09-_: Amending Rules of
 Procedure

B. COMMITTEES, BOARDS & COMMIS-
 SIONS:

1. Resignation of and Appointment to
 Conservation Advisory Commission - District 2
 2. Planning Commission Minutes of Octo-
 ber 6, 2009

*C. OTHERS: None

10. SPECIAL DEPARTMENTAL REPORTS:

A. Special Reports from Manager & Staff:

1. Setting the Date for the Presentation and
 Public Hearing of the 2010 General Operating
 Budget (Proposed Date: 11/23/09)

2. Real Estate Tax Assessment Quarterly
 Supplemental Roll

3. 2009 Budget Amendment to Support
 DNP Activities

B. Alderman's Report

C. Request for Executive Session re Pending
 Litigation

*OPEN FOR PUBLIC COMMENT

The above agenda is intended to be fol-
 lowed, but is subject to changes, deletions,
 additions,
 and modifications, as permitted under the
 Freedom of Information Act of the State of
 Delaware. Copies may be obtained at the City
 Secretary's Office, 220 Elkton Road, or online
 at www.cityofnewarkde.us

np 11/6

2107925

New Today

ROOFING need a new roof? **Free estimate**, tri-state area **302-354-1936**

Stanton Home Improvement, roofing, chimneys, gutters, siding, windows, trim, repairs. Senior disc **free estimate**, Emergency Service Lic & bonded **302-299-7692**

**MERCHANDISE****602 ANIMALS/PETS****New Today**

AMERICAN BULLDOG 8 months old all white. 1st \$200. Call **302-379-7710**

New Today

BOXER male, Reg with kennel 1 1/2 yrs old very friendly \$200 **443-481-8556** lv msg

New Today

DACHSHUND PUPS: miniature, AKC reg., champ bloodline, vet checked \$500 Call Dave **410-739-0013**

GERMAN Shepherd pups farm raised, mom and dad on prem. ACA & AKC reg. Wormed. Beautiful pups. \$325. Call **717-862-1053** before 9pm.

New Today

GERMAN SHEPHERDS AKC 2 white males. About 3 months old \$350 ea. **443-466-6942**

Jack Russell Puppies \$300 **443-480-0171** or **302-893-2042**

KITTENS free to good home, pictures available. Call **410-885-2989**

KITTENS (5) free to good home. **443-674-8772**

OUT DOOR RABBIT HUTCH barn style with cover & open side \$50 **410-620-3878**

New Today

PUG & PUGGLE PUPPIES, AKC reg. Black & fawn, males & females. 1st shots **302-376-0410**

SHEPHERD PUPPIES \$250 Ready to go. **410-353-8023**

615 APPLIANCES

KENMORE Oasis washer super capacity 2006 \$130. needs part **410-620-3878**

SINGER SEWING w/cabinet & attachments \$200 or b/o **Upright freezer** \$150 or b/o **410-287-9555**

LEGAL NOTICE**SHERIFF'S SALE**

By virtue of a writ of Alias Lev Fac#62 SE, AD., 2009.
Parcel No. 11-002.40-077
Property Address: 15 Metten Road, Newark, Delaware 19713

ALL that certain lot, piece or parcel of land, with the buildings and improvements thereon erected, situate, lying and being in the Pencader Hundred, New Castle County and State of Delaware, and bounded described and/or designated as follows:

BEING the same lands and premises which Betty J. Grabowski, as surviving tenant by the entirety, by Deed dated July 19, 2007 and recorded in the Office of the Recorder of Deeds, in and for New Castle County and State of Delaware, in Instrument# 20070731-0067268, did grant and convey unto Betty J. Grabowski and Elizabeth Bowman.

SEIZED AND TAKEN IN EXECUTION AS THE PROPERTY OF BETTY J. GRABOWSKI AND ELIZABETH BOWMAN.

TERMS OF SALE: 10% DOWN AT TIME OF SALE. BALANCE DUE ON OR BEFORE DECEMBER 21, 2009

SEPTEMBER 30, 2009
2100386

SHERIFF'S SALE

By virtue of a writ of Lev Fac#125 SE, AD., 2009.
Parcel No: 09-027.20-145
Property Address: 132 Elliot Street, Newark, DE 19713.

ALL that certain lot, piece or parcel of land with the buildings thereon erected, situate in White Clay Creek Hundred, New Castle County and State of Delaware, known as 132 Elliott Street, being Lot No. 16, block A, as shown on the Record Land Development Plan of Kimberton Section 1, as said Plan is of record in the Office of the Recorder of Deeds in and for New Castle County, Delaware, in Microfilm No. 1819, and being more particularly bounded and described in accordance with a recent survey by David (3. Williams, Professional Land Surveyor of Wilmington, Delaware, dated October 26, 1993, as follows, to-wit:

Being the same lands and premises which Hilda F. Bolen (f/k/a Hilda F. Chestnut) and Melvin Bolen by deed dated April 27, 2005 and recorded on May 3, 2005 in the Office of the Recorder of Deeds, in and for New Castle County, State of Delaware, in Deed Instrument 20050503-0041222.

SEIZED AND TAKEN IN EXECUTION AS THE PROPERTY OF HILDA F. BOLEN (F/K/A HILDA F. CHESTNUT) AND MELVIN BOLEN.

TERMS OF SALE: 10% DOWN AT TIME OF SALE. BALANCE DUE ON OR BEFORE DECEMBER 21, 2009.

SEPTEMBER 30, 2009
2100511

625 FURNITURE/FURNISHINGS**New Today**

ALL WOOD DRESSER with lg mirror with shelves 58" x 75" \$150 **410-275-1089**

BEDROOM SET 3 piece Maple. \$299. Call **302-328-6963**

DINING SET. Beautiful walnut, 3 leaves, table pads, 6 chairs, buffet server, lighted glass hutch. \$500 obo. **410-658-7643**

OVERSIZED STUFFED CHAIR burgundy & flowers free to good home **410-287-6424**

640 GENERAL MERCHANDISE

2 lg stereo speakers suitable for home 3 1/2 ft tall x 2 ft wide w/stands \$50 or b/o **410-755-6668**

Swivel Bar Stool, natural oak, rounded back, 30" seat height, good cond. \$20. Call **410-658-0858**

SOFA BED very good cond. \$99. Call **302-328-6963**

630 FIREWOOD

SEASONED Firewood; Mixed Hardwoods, Delivered \$175 per cord. **410-658-5801**

New Today

ANTIQUE SLOT MACHINE 1920 table top Pointsetta restored \$1200 **443-481-8556** lv msg

LEGAL NOTICE**SHERIFF'S SALE**

By virtue of a writ of Lev Fac#106 SE, AD., 2009.
Parcel No: 11-027.10-047
Property Address: 313 S. Bridlewood Drive, Newark, DE 19702.

ALL that certain lot, piece or parcel of land with the improvements erected thereon situate in Pencader Hundred, New Castle County, State of Delaware being Lot 67 as shown on the Record Resubdivision Plan of Bristol Place, of record in the Office of the Recorder of Deeds in and for New Castle County, Delaware on Instrument Number 20020230-004739, said lot also known as 313 South Bridle Wood Drive and being more particularly bounded and described in accordance with a recent mortgage inspection by Pennon Associates, Inc., dated May 5, 2002, as follows, to-wit:

Being the same lands and premises Florence N. Kamau and Ipy C. Kamau, did grant and convey unto and which Florence N. Kamau, by deed dated March 9, 2005 and recorded on April 1, 2005 in the Office of the Recorder of Deeds, in and for New Castle County, State of Delaware, in Deed Instrument 20050401-0030908.

SEIZED AND TAKEN IN EXECUTION AS THE PROPERTY OF FLORENCE N. KAMAU.

TERMS OF SALE: 10% DOWN AT TIME OF SALE. BALANCE DUE ON OR BEFORE DECEMBER 21, 2009.

SEPTEMBER 30, 2009
2100501

SHERIFF'S SALE

By virtue of a writ of Lev Fac#109 SE, AD., 2009.
Parcel No: 09-023.10-008
Property Address: 12 Queens Way, Newark, DE 19713.

ALL that certain lot, piece or parcel of land with the buildings thereon erected, situate in White Clay Creek Hundred, New Castle County and State of Delaware, known as 12 Queens Way, and being Lot No. 44, on the plan of Brookbend, as said Plan is of record in the Office of the Recorder of Deeds in and for New Castle County, Delaware in Microfilm No. 924, and being more particularly bounded and described in accordance with a survey prepared by Zebley & Associates, Inc., Professional Land Surveyors, dated April 21, 1992, as follows, to-wit:

Being the same lands and premises which Karen Riddle, did grant and convey unto Russell J. Gross and Karen Riddle, by deed dated January 10, 2005 and recorded on January 18, 2005 in the Office of the Recorder of Deeds, in and for New Castle County, State of Delaware, in Deed Instrument 20050118-0006252.

SEIZED AND TAKEN IN EXECUTION AS THE PROPERTY OF RUSSELL J. GROSS AND KAREN RIDDLE.

TERMS OF SALE: 10% DOWN AT TIME OF SALE. BALANCE DUE ON OR BEFORE DECEMBER 21, 2009.

SEPTEMBER 30, 2009
2100505

New Today

ARCADE size game, Galaga, \$600 exc cond **443-481-8556** lv msg

GUITAR GEAR like new & King trombone like new \$50 **410-398-5909**

WWW.CHESAPEAKE CLASSIFIED.COM

New Today

HO TRAIN COLLECTION for sale. Will only sell all. **410-287-9631**

LEGAL NOTICE**SHERIFF'S SALE**

By virtue of a writ of Third Pluries Lev Fac#54 SE, AD., 2009.
Parcel No. 11-033.20-023
Property Address: 120 Hannum Drive, Bear, Delaware, 19701.

ALL that certain lot, piece or parcel of land with the buildings thereon erected, situate in Pencader Hundred, New Castle County and State of Delaware, known as 120 Hannum Drive, being lot No. 8 as shown on the Record Resubdivision Plan for Oakwood, as said plan is of record in the office of the Recorder of Deeds, in and for New Castle County, Delaware in Microfilm No. 12300, and being more particularly bounded and described in accordance with a recent mortgage inspection plan prepared by East Coast Survey, Professional Land Surveyors, dated January 28, 2003.

BEING the same lands and premises which Bryant D. Wright and Michelle L. Wright did by deed dated January 31, 2003 and recorded in the office of the Recorder of Deeds, New Castle County, in Instrument No. 20030204-0014889 did grant and convey unto Cordelia Sneed and Willie Moore and Michelle Moore.

SEIZED AND TAKEN IN EXECUTION AS THE PROPERTY OF CORDELIA SNEED AND WILLIE MOORE AND MICHELLE MOORE.

TERMS OF SALE: 10% DOWN AT TIME OF SALE. BALANCE DUE ON OR BEFORE DECEMBER 21, 2009.

SEPTEMBER 30, 2009
2100381

SHERIFF'S SALE

By virtue of writ of Lev Fac#99 SE, AD., 2009.
Parcel No. 09-040.20-192
Property Address: 30 Warren Drive, Newark, DE 19702

ALL that certain lot, piece or parcel of land with the buildings thereon erected, situate in White Clay Creek Hundred, New Castle County and state of Delaware, known as 30 Warren Drive and being Lot No. 678 on the Record Major Subdivision Plan of SALEH WOODS, Phase III, as said plan is of record in the Office of the Recorder of Deeds in and for New Castle County in Microfilm No. 10150 and being more particularly bounded and described in accordance with a recent survey by David G. Williams, Professional Land Surveyor, Wilmington, Delaware, dated March 19, 1992, as follows, to-wit:

Being the same lands and premises which Roy Downs and Dorris Downs, did grant and convey unto Roy Downs, by deed dated May 15, 1992 and recorded on May 18, 1992 in the Office of the Recorder of Deeds, in and for New Castle County, State of Delaware, in Deed Instrument Book 1333 at Page 283.

SEIZED AND TAKEN IN EXECUTION AS THE PROPERTY OF ROY DOWNS AND DORRIS DOWNS.

TERMS OF SALE: 10% DOWN AT TIME OF SALE. BALANCE DUE ON OR BEFORE DECEMBER 21, 2009.

SEPTEMBER 30, 2009
2100494

New Today

HOLIDAY OPEN HOUSE Sat Nov 14 & Sun 15 1-4 PM. Rising Sun. Contact Amy Baltrinic Ind Consultant for more info **410-398-8494**

IN / OUTSIDE fountain, ivory crackle finish 45" h x 20" w asking \$25 **410-658-0858**

PLAY STATION 2 GAMES \$10 ea or \$40 for all. Call **410-378-3605**

New Today

TWO GREAT BUYS LEFT! Kitchenaid white glass top electric stove with convection, self cleaning oven \$300. Kenmore dishwasher \$75. Both in very good condition. Will email pictures! Call: **410-398-7706** or **443-350-1781**

New Today

TANNING BED About 9 yrs old. Works well, good cond. You pick up \$300. Call **443-604-8054**

New Today

WANTED Old baseball cards from your basement or attic 1973 and older **302-420-5866**

642 SPORTING GOODS**New Today**

8 MM GERMAN MOUSER sporterized, 2x7 bushnell scope. \$400 incl 3 boxes of ammo. **302-242-9182**

LEGAL NOTICE**SHERIFF'S SALE**

The following Real Estate will be exposed for Public Sale at the CITY/COUNTY BLDG., 800 N. French Street, City of Wilmington, New Castle County, Delaware, by Michael P. Walsh, Sheriff, on **TUESDAY** the 10TH day of **NOVEMBER, 2009** at 10:00A.M.

By virtue of a writ of Lev Fac#3 SE, AD., 2009.
Parcel No. 11-037.00-042
Property Address: 230 Edgewood Drive, Bear, Delaware.

ALL that certain lot, piece or parcel of land with the improvements thereon erected, situate in Pencader Hundred, New Castle County and State of Delaware, known as Lot# 6-F, Countryside Farms, being more particularly bounded and described in accordance with a recent survey prepared by Zebley & Associates, Inc., Professional Land Surveyors of Wilmington, Delaware, dated January 9, 1981.

BEING the same lands and premises conveyed to George R. Ross, Jr., by Deed from Brent J. Engrem and Heather A. Engrem, dated June 18, 2007, and recorded on June 22, 2007, in the Office of the Recorder of Deeds, in and for New Castle County, and State of Delaware, in Instrument No. 20070622-0056008.

SEIZED AND TAKEN IN EXECUTION AS THE PROPERTY OF GEORGE R. ROSS, JR.

TERMS OF SALE: 10% DOWN AT TIME OF SALE. BALANCE DUE ON OR BEFORE DECEMBER 21, 2009.

SEPTEMBER 30, 2009
2100366

SHERIFF'S SALE

By virtue of a writ of Lev Fac#11 SE, AD., 2009.
PARCEL NO. 09-027.20-174
PROPERTY ADDRESS: 117 Elliott Street, Newark, DE 19713.

ALL that certain lot, piece or land with the buildings thereon erected, situate in White Clay Creek Hundred, New Castle County and State of Delaware, known as 117 Elliott Street and being Lot No. 62, Block B, as shown on a Record Land Development Plan, Section 1, Kimberton, recorded on August 25, 1971 in the Office of the Recorder of Deeds in and for New Castle County, Delaware on Microfilm No. 1819, and being more particularly bounded and described in a more recent survey prepared by East Coast Survey, Inc., dated 01-12-06, as follows, to-wit:

BEING the same lands and premises which Lane Michael Gary by Deed dated January 27, 2006 and recorded in the Office of the Recorder of Deeds, in and for New Castle County and State of Delaware, in Instrument Number 20060203-0012385, did grant and convey unto Sadek A. Albadani and Jamilah A. Saif, husband and wife.

SEIZED AND TAKEN IN EXECUTION AS THE PROPERTY OF SADEK A. ALBADANI AND JAMILAH A. SAIF.

TERMS OF SALE: 10% DOWN AT TIME OF SALE. BALANCE DUE ON OR BEFORE DECEMBER 21, 2009.

SEPTEMBER 30, 2009
2100367

New Today

TREAD MILL PRO-FORM w/incline & fan
\$150 443-481-8556 lv
msg

TREADMILL Nordic
Trac C2255 \$200 or
b/o 443-206-1453

**WWW.CHESEAPEAKE
CLASSIFIED.COM**

660 YARD SALES



5 + FAMILIES RISING SUN 919 Calvert Rd., Down from Calvert Elem. Nov 7, 8:00.

HUGE SALE

ELKTON 2021
Blue Ball Rd Sat
11/7 8a-2 if rain no
sale, dishes, knick
quilts & spreads,
sheets baskets &
flowers hand bags
baseball cards
clarinet guitar
trombone throw
pillows lamps
round oak table
ceramic table &
chairs other sm
tables rockers
Christmas items &
hi chair & many
other baby items
New & used cloth-
ing clean out sale
a little bit of every-
thing come see

ELKTON- Cecil
Manor Sch Rd. (off Elk
Mills Rd) Sat Nov 7th
8-1. Estate Sale!

LARGE



ELKTON- Manches-
ter Park (off 213 near
Fairhill) on Fri Nov 6th
Saturday Nov 7, 8am-
?

NORTH EAST North
East United M.
Church Parking lot,
Main St. Sat, 11/7, 9-
2. Misc items, kitchen-
wares, tools, clothing,
etc. Inside if rain.

LEGAL NOTICE

SHERIFF'S SALE

By virtue of a writ of Lev Fac#85 SE, AD., 2009.

Parcel No. 11-014.30-0001-C905A
Property Address: 905 Cobblecreek Curve,
Newark, Delaware 19702.

ALL that certain unit of real property existing under and by virtue of the Unit Property Act of Delaware, known at Unit No. 905-A, Stone Throw, a condominium, situate in Pencader Hundred, New Castle County and State of Delaware, as said unit is more particularly bounded and described in (1) the Declaration of F.A.A.H., Inc. dated April 16, 1975 and recorded in the Office of the Recorder of Deeds, in and for New Castle County and State of Delaware, in Deed Record I, Volume 90, Page 564, and (2) the Declaration Plan of Stones Throw prepared by Edward H. Richardson Associates, Inc., Consulting Engineers, dated March 20, 1975 and recorded in the Office of the Recorder of Deeds aforesaid, in Microfilm No. 2904.

TOGETHER with a proportionate undivided interest in the Common Elements of Stones Throw, as said Common Elements are more particularly bounded and described in said Declaration and Declaration Plan; thence proportionate undivided interest expressed in terms of a percentage of the Common Elements as a whole equals 1.17%, provided that the percentage may from time to time change, be amended and be adjusted pursuant to Sections 5B and 10B of said Declaration.

SUBJECT, FURTHER, to all the provision of said Declaration and Code of Regulations as amended from time to time, the same as if such provisions were herein set forth at length. The Code of Regulations dated April 16, 1975, is recorded in the Office for the Recording of Deeds aforesaid in Deed Record I, Volume 90, Page 509.

SUBJECT to a possibility of reverter in the Grantor, with respect to the proportionate undivided interest in the Common Elements above set forth, more fully described in Section 10B(i) of the Declaration.

SUBJECT, however, to the following provision: The grantees, for and on behalf of the grantees and the grantees' heirs, personal representatives, successors and assigns, by the acceptance of this deed, covenant and agree to pay such charges for the maintenance of, repairs to, replacement of and expenses in connection with the common elements as may be assessed from time to time by the council in accordance with the Unit Property Act of Delaware (Chapter 22 of Title 25 of the Delaware Code) and further covenant and agree that the unit conveyed by this deed shall be subject to a charge for all amounts so assessed, and that, except in so far as Sections 2236 and 2237 of Title 25 of the Delaware Code may relieve a subsequent unit owner of liability for prior unpaid assessments. This covenant shall run with and bind the land or unit hereby conveyed and all subsequent owners thereof.

BEING the same lands and premises conveyed to Lana Dugan, by Deed from Cynthia Battles, dated June 15, 2007, and recorded June 19, 2007, in the Office of the Recorder of Deeds, in and for New Castle County, and State of Delaware, as Instrument No. 20070619-0054865.

SEIZED AND TAKEN IN EXECUTION AS THE PROPERTY OF LANA DUGAN.

TERMS OF SALE: 10% DOWN AT TIME OF SALE. BALANCE DUE ON OR BEFORE DECEMBER 21, 2009.

SEPTEMBER 30, 2009
2100479

SHERIFF'S SALE

By virtue of a writ of Alias Lev Fac#120 SE, AD., 2009.

Parcel No: 11-009.00-047
Property Address: 147 Welsh Road, Newark,
DE 19702.

All that certain tract or a lot of land, situate in Pencader Hundred, New Castle County, Delaware bounded and described as follows: Being the same lands and premises which Robert Frazer Burns, did grant and convey unto Robert Frazer Burns and Bonnie Burns, by deed dated May 20, 1999 and recorded on June 1, 1999 in the Office of the Recorder of Deeds, in and for New Castle County, State of Delaware, in Deed Book 2650 at Page 249. SEIZED AND TAKEN IN EXECUTION AS THE PROPERTY OF ROBERT FRAZER BURNS AND BONNIE BURNS.

TERMS OF SALE: 10% DOWN AT TIME OF SALE. BALANCE DUE ON OR BEFORE DECEMBER 21, 2009.

SEPTEMBER 30, 2009
2100506

PUBLIC NOTICE

The following Sentinel Self Storage sites will be holding public auctions on December 9, 2009. All sales are cash and final. A \$100 cash deposit is required when purchasing a unit.

SENTINEL SELF STORAGE 200 FIRST STATE BOULEVARD WILMINGTON, DE 19804 302-999-0704

Public auction to be held December 9, 2009 at 11:00am.

The following storage units will be auctioned:
#0417 - Jim Rembecki - ice chest, suitcase toolbox, 5 totes, paint, airhose and compressor, assorted tools

#1228 - Dawnta Ewvans - playpen, baby stroller, bed frame, 3 bags, 1 box, table lamp, suitcase, folding table, 2 totes, toys, futon

#316 - Benjamin Wilson - 6 bags, 3 boxes, filing cabinet, office chair, microwave, totes, record albums

PUBLIC AUCTION SENTINEL SELF STORAGE 1100 ELKTON ROAD NEWARK, DE 19711 (302)-731-8108

A Public Auction will be held on Wednesday, 12/09/2009 at 10:00 AM. The contents of the following storage units will be auctioned:
Unit# 4108 - James Gaylord Jones - boxes, clothing, dresser, fans, fishing equipment, stereo and cabinet, dvd, vcr, wicker hamper, misc. household items

Unit#5029 - Deborah A. Johnston - boxes clothing, table lamp, totes, canvas tote, misc. household items.

Unit#6010 - Jeremy Johnston - bed frame, box spring, headboard, boxes, kitchen chairs, totes, portable tvs, tv stand, bbq grill, baby high chair, misc. household items.

Unit#7012 - Judy D. Deputy - bags, boxes, dresser, fishing equipment, totes, portable tv ,kitchen chairs.

PUBLIC AUCTION SENTINEL SELF STORAGE 465 Pulaski Hwy New Castle, DE 19720 (302)328-5810

A Public Auction will be held on Wednesday, December 9th, 2009 at 1:00PM. The contents of the following storage units will be auctioned:

Unit#1116 - Kirra Lancaster - boxes, filing cabinet, ironing board, stool, totes, baskets
np 10/28,11/4 2105355

LEGAL NOTICE

LATE MODEL RENTAL RETURNS Tri Supply & Equipment Construction, Support Equipment, Aerial, Forklifts SAT, NOV. 14 @ 9:30 AM NEW CASTLE, DE

1685 River Road, New Castle, DE 19720.

HILITES: 3 ARTIC. HAUL TRUKS, 5 HYDRAULIC EXCAVATORS, CRAWLER TRACTORS, 5 TRACTOR LOADER BACKHOES, SOIL COMPACTORS, ASPHALT ROLLERS, 5 TRENCH ROLLERS, 2 RUBBER TRACKED SKID STEERS, 3 SKID STEERS, 3 TRENCHERS, 11 TELESCOPIC FORKLIFTS, 3 BOOM LIFTS, 5 SCISSOR LIFTS, 16 GENERATORS, PUMPS, CONCRETE EQUIP., SWEEPERS, 4 UTILITY TRAILERS, QTY. ATTACHMENTS, SUPPORT EQUIP.

SITE PHONE: 302-838-6333, 863-660-4811

ALEX LYON & SON
SALES MANAGERS & AUCTIONEERS,
INC., BRIDGEPORT, NY
Phone: (315) 633-2944
www.lyonauction.com

cw 11/4,11 & np 11/6,13 2106645

SHERIFF'S SALE

By virtue of a writ of Lev Fac#92 SE, AD., 2009.

Parcel No. 11-020.30-114
Property Address: 515 Laurel Lane, Newark,
DE 19702.

ALL that certain lot, piece or parcel of land with the buildings thereon erected, situate in Pencader Hundred, New Castle County and State of Delaware, known as 515 Laurel Lane, being Lot No. 77 on the Plan of Barrington, as the Plan thereof is of record in the Office of the Recorder of Deeds in and for New Castle County, Delaware in Microfilm No. 12961, and being more particularly bounded and described in accordance with a survey prepared by East Coast Survey, Professional Land Surveyors, dated October 29, 2007.

SUBJECT to restrictions of record in the Office of the Recorder of Deeds in and for New Castle County, Delaware in Deed Book 2324, Page 238.

SUBJECT to a maintenance declaration of the record in the Office aforesaid in deed Book 2324, Page 227.

SUBJECT to a sewer agreement of record in the Office aforesaid in Deed Book 2261, Page 148; utility agreements of record in Deed Record X, Volume 85, Page 371; Deed Book 2134, Page 99; Deed Book 2197, page 294; and Deed Book 2275, Page 182. Subject, further, to easements and conditions as shown in Microfilm Nos. 12004 and 12961.

BEING the same lands and premises which DAREN A. RICHARDS, by Deed dated November 16, 2007, and recorded in the Office of the Recorder of Deeds in and for New Castle County and State of Delaware, as Instrument 20071120-0099900, did grant and convey unto Joseph R. Morales and Samantha Morales, his wife, in fee.

SEIZED AND TAKEN IN EXECUTION AS THE PROPERTY OF JOSEPH R. MORALES AND SAMANTHA MORALES.

TERMS OF SALE: 10% DOWN AT TIME OF SALE. BALANCE DUE ON OR BEFORE DECEMBER 21, 2009.

SEPTEMBER 30, 2009
2100484

LEGAL NOTICE

THE COURT OF COMMON PLEAS FOR THE STATE OF DELAWARE IN AND FOR NEW CASTLE COUNTY

IN RE: CHANGE OF NAME OF
Maria Del Carmen
PETITIONER(S)

TO:
Margot Reyes
NOTICE IS HEREBY GIVEN that Maria Del Carmen intends to present a Petition to the Court of Common Pleas for the State of Delaware in and for New Castle County, to change his/her name to Margot Reyes.

Margot Reyes
Petitioner

DATED: 10/13/09
np 10/23,30,11/6

2102511

SHERIFF'S SALE

By virtue of a writ of Lev Fac#81 SE, AD., 2009.

Parcel No. 11-016.40-103
Property Address: 6 Donegal Court, Newark,
DE 19702.

ALL THAT CERTAIN LOT, piece or parcel of land with the buildings thereon erected, situate in Pencader Hundred, New Castle County and State of Delaware, known as 6 Donegal Court, being Lot No. 141 on the Record Major Subdivision Plan of Deerborne Woods, as the Plan thereof is of record in the Office of the Recorder of Deeds in and for New Castle County, Delaware in Microfilm No. 13522, and being more particularly bounded and described in accordance with a survey prepared by East Coast Survey, Professional Land Surveyors, dated October 9, 2000, as follows, to-wit:

BEGINNING at a point on the Northwesterly side of Donegal Court, at 50 feet wide, said point being a common corner for this lot and Lot No. 140, and further located the following two courses and distances along the Northwesterly side of Donegal Court from the Southwesterly end of a 25.00 foot radius junction curve joining the Southwesterly side of Glencoe Drive, at 50 feet wide, and the Northwesterly side of Donegal Court; (1) along a curve to the left having a radius of 325.00 feet, an arc distance of 112.88 feet to a point of reverse curvature; (2) along a curve to the right having a radius of 25.00 feet, an arc distance of 10.03 feet to the place of beginning; thence from said place of beginning, along the Northwesterly side of Donegal Court, along a curve to the right having a radius of 25.00 feet, an arc distance of 9.04 feet to a point of reverse curvature; thence along a curve to the left having a radius of 50.00 feet, an arc distance of 59.96 feet to a point; thence along Lot No. 142, North 85 degrees, 43 minutes, 43 seconds West, 102.86 feet to a point; thence along lands designated as Private Open Space, North 29 degrees, 34 minutes, 10 seconds East, 117.53 feet to a point; thence along Lot No. 140, South 54 degrees, 05 minutes, 37 seconds East, 116.06 feet to the point and place of beginning. Containing within said metes and bounds 0.1992 +/- acres of land.

Being the same lands conveyed to Christopher Simendinger and Victoria A. Simendinger by Deed from Handler Builders, Inc., dated October 26, 2000, and recorded in the Office of the Recorder of Deeds in and for New Castle County in Deed Book 2915 page 313.

SEIZED AND TAKEN IN EXECUTION AS THE PROPERTY OF CHRISTOPHER SIMENDINGER AND VICTORIA A. SIMENDINGER.

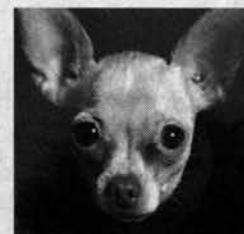
TERMS OF SALE: 10% DOWN AT TIME OF SALE. BALANCE DUE ON OR BEFORE DECEMBER 21, 2009.

SEPTEMBER 30, 2009
2100475

Knickknack Paddywack

Give a dog a home

If you have the time and love
to give check out the
Cecil Whig Classifieds today!
800-220-1230 or 410-398-1230



Classified
is the
key
to more
sales.

RID YOUR HOME OF
ALL THAT CLUTTER!
HAVE A YARD SALE
AND ADVERTISE IT
WITH US!

New Today

PERRYVILLE 743
Concord Point Dr in Beacon Point at bottom of hill turn left on Thomas Point & right on Concord Drive
Sat, 11/7 8am-7pm or shine Huge selection of name brand petite clothes & shoes in exc shape! Fall items, collection of Christmas items, collectibles, some antiques, homemade jellies, jams, relishes, bread & cookies, & cookie jars, large selection of all occasion wreaths, etc.



RSUN - Sat Nov 7, 9-1. INSIDE Calvert Grange RT 273. DSGNR purses, Xmas, Baby / Kid / JR / Adult to 3X, More!



YARD SALE. No Junk. Sunnybrook (by Brantwood). Sat 11/7. 8-2 Rain date 11/14.

664 LAWN & GARDEN EQUIPMENT**New Today**

TRAC VAC model
#450 5 hp motor 8bu capacity. Exc cond. \$500 410-378-9666

WWW.CHESAPEAKE CLASSIFIED.COM

680 WANTED TO BUY

CASH PAID FOR OLD RECORDS. 45 Rpm's & Lp's from the 50's & 60's also buying antiques. Bob 410-679-8276

740 FARM SUPPLIES / EQUIPMENT**New Today**

ORCHARD GRASS HAY for sale. \$3 per bale. Must pick up. 410-658-4953



ANY WAY YOU LOOK AT IT, CHESAPEAKE CLASSIFIED CAN WORK FOR YOU!

**TRANSPORTATION****815 POWER BOATS****New Today**

14' TRACKER GRIZZLY '04 30hp oil injected Yamaha. Garmin f/f, trolling motor, garage kept, Very clean. \$4,000 b/o 443-722-5977

CHECK OUT OUR WEBSITE AT WWW.CHESAPEAKECLASSIFIED.COM

830 MARINE ACCESS./STORAGE**OUTBOARD MOTOR**

1988 Johnson 88 hp. Very good used engine, lower unit has been completely replaced, comes with standard controls, installed on boat for \$1500. Call 484-756-4203

OUTBOARD MOTOR

'87 Johnson 90hp. Completely rebuilt, power tilt & trim, standard controls incl. Installed on boat for \$2,900. Please call 484-756-4203

840 RECREATIONAL VEHICLES****WANTED****

Clean, Pre-Owned RV's

Alexander RV

Toll Free 888-674-2267

845 CAMPERS / POP-UPS**New Today**

TOW HITCH for camper. Wogue weight 1200lb, trailer weight 10,000lb. Barely used. \$200. Call 410-620-5511

850 MOTORCYCLES / ATVs**New Today**

2002, 250 SUZUKI Ozark, no clutch, yellow & black. \$2000. 350, Warrior, blue and white, fast. \$1500 or \$3000 for both. **Both look and run great!** Call 443-945-1696 410-392-2256

New Today

'91 HD SOFT TAIL Stock, low miles, \$6,500 obo. Call after 3pm 410-398-9137

New Today

HARLEY DAVIDSON DYNA WIDE GLIDE '01 Exc cond. 33K. \$8900. Call 410-836-3020 after 5pm.

KAWASAKI ZX-636 '05 2,300 miles. \$5,899 OBO. Need to sell 410-920-2378

860 AUTO PARTS & ACCESSORIES

4 BRIDGESTONE Blizzak LM22 Tires. Like new 205/50R17. \$400 410-885-5334

870 TRUCKS / SPORT UTILITY VEHICLES

1989 Jeep Wrangler Automatic, 51267 Mi. \$2,300 Email me at: BRBLN2@aol.com

CLASSIFIEDS
410-398-1230
800-220-1230

LEGAL NOTICE**THE COURT OF COMMON PLEAS FOR THE STATE OF DELAWARE IN AND FOR NEW CASTLE COUNTY**

IN RE: CHANGE OF NAME OF

Lauren F. Briggs
PETITIONER(S)

TO Lauren F. Wilson

NOTICE IS HEREBY GIVEN that Lauren F. Briggs intends to present a Petition to the Court of Common Pleas for the State of Delaware in and for New Castle County, to change his/her name to Lauren F. Wilson.

Elizabeth M Wilson
parent of Lauren Briggs

TERMS OF SALE: 10% DOWN AT TIME OF SALE. BALANCE DUE ON OR BEFORE DECEMBER 21, 2009.

SEPTEMBER 30, 2009
2100377

DATED: 10/15/09
NP 11/6,13,20
2107637

THE COURT OF COMMON PLEAS FOR THE STATE OF DELAWARE IN AND FOR NEW CASTLE COUNTY

IN RE: CHANGE OF NAME OF

Kyle Patrick Cook
PETITIONER(S)

TO Jennifer Naomi Murphy

NOTICE IS HEREBY GIVEN that Kyle Patrick Cook intends to present a Petition to the Court of Common Pleas for the State of Delaware in and for New Castle County, to change his/her name to Jennifer Naomi Murphy.

Kyle Cook
Petitioner

TERMS OF SALE: 10% DOWN AT TIME OF SALE. BALANCE DUE ON OR BEFORE DECEMBER 21, 2009.

SEPTEMBER 30, 2009
2100379

DATED: 10/27/09
NP 11/6,13,20
2106665

LEGAL NOTICE**SHERIFF'S SALE**

By virtue of a writ of Lev Fac#139 SE, AD., 2009.

Parcel No: 11-019.20-056
Property Address: 26 Evergreen Dr., Newark, DE 19702.

ALL that certain lot, piece or parcel of land, with the buildings thereon erected, situate in Pencader Hundred, New Castle County and State of Delaware, known as 26 Evergreen Drive, being Lot No. 29, on the Plan of Heather Woods, as the Plan thereof is of record in the Office of the Recorder of Deeds, in and for New Castle County in Microfilm No. 4886, and being more particularly bounded and described in accordance with a survey prepared by AES Surveyors, Professional Land Surveyors, dated 10/24/06.

BEING the same lands and premises which Janice M. Bonsall and Roland H. Bonsall did by deed dated November 10, 2006 and recorded in the Office of the Recorder of Deeds, in and for New Castle County, Delaware in Instrument No. 20061113-0106714 did grant and convey unto James E. Furlow.

SEIZED AND TAKEN IN EXECUTION AS THE PROPERTY OF JAMES E. FURLOW.

TERMS OF SALE: 10% DOWN AT TIME OF SALE. BALANCE DUE ON OR BEFORE DECEMBER 21, 2009.

SEPTEMBER 30, 2009
2100516

SHERIFF'S SALE

By virtue of a writ of Lev Fac#67 SE, AD., 2009.

Parcel No. 12-006.00-219
Property Address: 11 Tamar Court, Bear, DE 19701

ALL that certain lot, piece or parcel of land, with the buildings thereon erected, situate in Red Lion Hundred, New Castle County and State of Delaware, known as 11 Tamar Court, being Lot No. 112, on the Plan of Estates of Red Lion, as the Plan thereof is of record in the Office of the Recorder of Deeds, in and for New Castle County in Microfilm No. 14338 and more recently shown on the Mortgage Inspection Plan No. 19984-122568, dated March 4, 2004, and being more particularly bounded and described in accordance with a survey prepared by East Coast Surveyors, Professional Land Surveyors, dated September 21, 2005, as follows, to-wit:

BEING the same lands and premises which D M Peoples Investment Corp. by Deed dated September 26, 2005 and recorded in the Office of the Recorder of Deeds, in and for New Castle County and State of Delaware, in Instrument Number 20050930-0100749, did grant and convey unto Fatou Fadiga and Samba Diallo.

SEIZED AND TAKEN IN EXECUTION AS THE PROPERTY OF FATOU FADIGA AND SAMBA DIALLO.

TERMS OF SALE: 10% DOWN AT TIME OF SALE. BALANCE DUE ON OR BEFORE DECEMBER 21, 2009.

SEPTEMBER 30, 2009
2100397

LEGAL NOTICE**SHERIFF'S SALE**

By virtue of a writ of Lev Fac#107 SE, AD., 2009.

Parcel No: 11-017.00-048-C0170
Property Address: 1402 Waters Edge Drive, Newark, DE 19702.

ALL that certain unit of real property, existing under and by virtue of the Unit Property Act of the State of Delaware, known as UNIT NO. 1402 in the WATERS EDGE CONDOMINIUMS, an apartment condominium, situate in the County of New Castle, State of Delaware, such Unit being more particularly bounded and described in (1) the Enabling Declaration Establishing a Plan for Condominium Ownership of Waters Edge.

Being the same lands and premises which Edge Of The Woods Limited Partnership, did grant and convey unto and which Andrew J. Klobusicky, by deed dated January 31, 1994 and recorded on February 2, 1994 in the Office of the Recorder of Deeds, in and for New Castle County, State of Delaware, in Deed Book 1670 at Page 285.

SEIZED AND TAKEN IN EXECUTION AS THE PROPERTY OF ANDREW J. KLOBUSICKY.

TERMS OF SALE: 10% DOWN AT TIME OF SALE. BALANCE DUE ON OR BEFORE DECEMBER 21, 2009.

SEPTEMBER 30, 2009
2100502

SHERIFF'S SALE

By virtue of a writ of Lev Fac#57 SE, AD., 2009.

Parcel No. 10-033.00-058
Property Address: 304 Rivers End Drive, Bear, DE 19701

ALL that certain lot, piece or parcel of land with the improvements thereon, situate in New Castle Hundred, New Castle County and State of Delaware, being Parcel 1 as shown on the Record Major Lund Subdivision Plan of Levering of record in the Office of the Recorder of Deeds in and for New Castle County, Delaware in Microfilm No. 7712, said lot also known as 175-1/2 Smalley's Dam Road and being more particularly bounded and described in accordance with a recent survey prepared by East Coast Survey Professional Land Surveying dated January 26, 2005, as follows, to-wit:

BEING the same lands and premises which C & K Builders, LLC, a limited liability company of the State of Delaware by Deed dated May 26, 2005 and recorded in the Office of the Recorder of Deeds, in and for New Castle County and State of Delaware, in Instrument Number 20050714-0069283, did grant and convey unto Shaun K. Harris, Sr. and Kimberly S. Rice.

SEIZED AND TAKEN IN EXECUTION AS THE PROPERTY OF SHAUN K. HARRIS, SR. AND KIMBERLY S. RICE.

TERMS OF SALE: 10% DOWN AT TIME OF SALE. BALANCE DUE ON OR BEFORE DECEMBER 21, 2009.

SEPTEMBER 30, 2009
2100382

SHERIFF'S SALE

By virtue of a writ of Lev Fac#134 SE, AD., 2009.

Parcel No: 08-055.30-162
Property Address: 416 3rd Street, Newark, DE 19711.

ALL THAT CERTAIN LOT, PIECE OR PARCEL OF LAND, WITH THE BUILDINGS THEREON SITUATE IN MILL CREEK HUNDRED, NEW CASTLE COUNTY, DELAWARE AND BEING DESIGNATED AS LOT 145, AS SHOWN ON THE RECORDED RESUBDIVISION PLAN OF GREEN VALLEY, PHASE I, OF RECORD IN THE OFFICE OF THE RECORDER OF DEEDS IN AND FOR NEW CASTLE COUNTY, DELAWARE ON MICROFILM NO 5245, SAID LOT ALSO KNOWN AS 416 3RD STREET AND BEING NOW MORE PARTICULARLY BOUNDED AND DESCRIBED ACCORDING TO A SURVEY BY FIRST STATE MORTGAGE SURVEYORS, INC. DATED JANUARY 27, 1997.

Being the same lands and premises which Susan Lichtenstein, by deed dated January 31, 1997 and recorded in the Office of the Recorder of Deeds, in and for New Castle County, Delaware, in Deed Book 2230 Page 58, Did grant and convey unto Susan B. Paden.

SEIZED AND TAKEN IN EXECUTION AS THE PROPERTY OF SUSAN B. PADEN.

TERMS OF SALE: 10% DOWN AT TIME OF SALE. BALANCE DUE ON OR BEFORE DECEMBER 21, 2009.

SEPTEMBER 30
2100515

SHERIFF'S SALE

By virtue of a writ of Lev Fac#151 SE, AD., 2009.

Parcel No: 11-002.20-259
Property Address: 27 Matthews Road, Newark, DE 19713

ALL that certain lot, piece or parcel of land with the buildings and improvements thereon erected, situate, lying and being in Pencader Hundred, New Castle County and State of Delaware, and known as Lot 277 on a Plan of Brookside Park, Section M-2 prepared by Whitman Requardt and Associates, Consulting Engineers dated August 16, 1954 and of record in the Office of the Recorder of Deeds, in and for New Castle County and State of Delaware, in Plat Book 3, Page 52, on September 14, 1954 and more particularly bounded and described in a survey of On Point, Inc., dated 11/22/2004.

BEING the same lands and premises which Alison Davey, by Deed dated March 8, 2007, and recorded in the Office of the recorder of Deeds in and for New Castle County and State of Delaware, in Document Number 20070308-0022310, did grant and convey unto James Arthur Stafford and Wanda T. Stafford.

SEIZED AND TAKEN IN EXECUTION AS THE PROPERTY OF JAMES ARTHUR STAFFORD AND WANDA T. STAFFORD.

TERMS OF SALE: 10% DOWN AT TIME OF SALE. BALANCE DUE ON OR BEFORE DECEMBER 21, 2009.

SEPTEMBER 30, 2009
2100520

SHERIFF'S SALE

By virtue of a writ of Lev Fac#36 SE, AD., 2009.

Parcel No. 10-052.00-033
Property Address: 7 Lauren Drive, Bear, DE 19701.

BEING known and designated as all that certain lot, piece or parcel of land, situate in New Castle Hundred, Castle County and State of Delaware, known as 42 on the Plan Lauren Farms as on the record major subdivision plan of Lauren Farms, as prepared by Talley, Inc. recorded August 28, 1974, on the Microfilm No. 2735 being more particularly bounded and described in accordance with recent a survey prepared by Raymond F. Christian and Associates, Inc. Professional Land Surveyors; dated November 13, 1989 as follows, to wit:

Being the same lands and premises which James E. Sollinger and Solinger did grant and convey unto John I. Mathues and Jeanmarie Mathues by deed dated November 27, 1989 and recorded on November 28, 1989 in the Office of the Recorder of Deeds, in and for New Castle County, State of Delaware, in Deed Book 960 Page 323.

SEIZED AND TAKEN IN EXECUTION AS THE PROPERTY OF JOHN I. MATHUES AND JEANMARIE MATHUES.

TERMS OF SALE: 10% DOWN AT TIME OF SALE. BALANCE DUE ON OR BEFORE DECEMBER 21, 2009.

SEPTEMBER 30, 2009
2100377

SHERIFF'S SALE

By virtue of a writ of Lev Fac#52 SE, AD., 2009.

Parcel No. 09-023.10-147
Property Address: 1005 Stinsford Road, Newark, DE 19713

ALL that certain lot, piece or parcel of land with the buildings thereon erected, situate in White Clay Creek Hundred, New Castle County and State of Delaware, known as 1005 Stinsford Road, being Lot No. 9 on the Plan of Hillside Heights, Second 2 as the Plan thereof is of record in the Office of the Recorder of Deeds in and for New Castle County, Delaware in Microfilm No. 703 and being more particularly bounded and described in accordance with a survey prepared by East Coast Survey, Professional Land Surveyors, dated September 29, 2004.

AND BEING the same lands and premises as conveyed unto Megan Victoria Bradley by deed of Richard A. Peacock dated October 1, 2004 and recorded in the Office of the Recorder of Deeds in and for New Castle County, State of Delaware as Instrument No. 20041004-0108505.

SEIZED AND TAKEN IN EXECUTION AS THE PROPERTY OF MEGAN VICTORIA BRADLEY.

TERMS OF SALE: 10% DOWN AT TIME OF SALE. BALANCE DUE ON OR BEFORE DECEMBER 21, 2009.

SEPTEMBER 30, 2009
2100379

New Today
2005 CHEVY SUB-
URBAN fully loaded,
\$15K obo. Call 410-
459-3447

DODGE DAKOTA
P/U '90 auto, good
tires good cond, runs
great \$1500 410-
398-5909

GMC ENVOY '03
86,000 miles. \$8500.
410-920-2401

New Today
SUZUKI VITARA '02
144k mi., clean good
cond \$3500 or b/o
443-553-4107

TOYOTA TACOMA
'03 Xtra Cab. 33K mi
Tow, liner, cover. MD
Insp. \$9300. 410-
745-3437

880 AUTOS

New Today
2005 PONTIAC G6,
46k miles, loaded, exc
cond, \$12,400. Call
410-924-0970

**WWW.CHESAPEAKE
CLASSIFIED.COM**

LEGAL NOTICE

LEGAL NOTICE

RE: DEADLY
WEAPON
I, Shawn L. Harrison
residing at, 79 Star-
dust Drive, Newark,
DE 19702 wil make
application to the
judges of the superior
court of the State of
Delaware in and for
New Castle County at
Wilmington for the
next term for a license
to carry a concealed
deadly weapon, or
weapons, for the pro-
tection of my
person(s) or property,
or both.

Shawn L. Harrison
10/28/09
np 11/6
2107635

LEGAL NOTICE

RE: DEADLY
WEAPON
I, Joseph Calarco
residing at, 4 Old Sta-
ble Ln, Newark, DE
19711 will make appli-
cation to the judges of
the superior court of
the State of Delaware
in and for New Castle
County at Wilmington
for the next term for a
license to carry a con-
cealed deadly
weapon, or weapons,
for the protection of
my person(s), or prop-
erty, or both.

Joe Calarco
10/23/09
np 11/6 2106706



**CHECK OUT
CHESAPEAKE
CLASSIFIEDS
EVERYDAY FOR
THAT NEW
JOB!**

**Are You Ready To
Fill These Shoes?**



**Check Our
Classified Pages
Everyday For The
Latest Job Opportunities**
Let Chesapeake Classifieds
Work For You!

LEGAL NOTICE

SHERIFF'S SALE

By virtue of a writ of Vem#45 SE. AD., 2009.
Parcel No: 11-027.20-160
Property Address: 711 Fox Chase Circle, Bear,
DE 19701.

ALL THAT CERTAIN LOT, piece or parcel of
land with any buildings or improvements there-
on erected, known as 711 Fox Chase Circle,
Bear, DE 19701.

BEING the same lands and premises which
were conveyed unto Paramjit Kaur and Armin-
der Singh, by deed of Stephen Jew and Dawn
Jew, husband and wife dated May 26, 2006,
and recorded in the Office of the Recorder of
Deeds in and for New Castle County,
Delaware, on May 30, 2006, as Instrument No.
20060530-0051289.

SEIZED AND TAKEN IN EXECUTION AS
THE PROPERTY OF PARAMJIT KAUR AND
ARMINDER SINGH.

TERMS OF SALE: FULL PURCHASE PRICE
AT THE TIME OF THE SALE. IN ACCOR-
DANCE WITH 9DEL.C. SS8726. THIS SALE IS
SUBJECT TO THE APPROVAL OF THE
CHIEF FINANCIAL OFFICER OF NEW CAS-
TLE COUNTY.

SEPTEMBER 30, 2009
2100524

SHERIFF'S SALE

By virtue of a writ of Lev Fac#93 Se, AD.,
2009.
Parcel No. 10-043.20-130
Property Address: 150 Amberfield Lane,
Newark, DE 19702.

ALL THAT CERTAIN piece, parcel or tract of
land, with the buildings thereon erected,
known as 150 THREE RIVERS CIRCLE, THE
LANES OF AMBERFIELD NEWARK 19702,
situate in New Castle Hundred, New Castle
County and State of Delaware, being Lot NO.
141 on the Record Resubdivision Plan of
Wellington Woods-Section 2 and 3 as record-
ed in the Office of Recorder of Deed in and
for New Castle County and State of Delaware,
on Microfilm No. 10595 and being more particu-
larly bounded and described in accordance
with a Survey by A.E.S. Survyors dated Janu-
ary 27, 2006.

Being the same lands and premises which
Patricia A. Ramone, by Deed dated November
17, 2000 and recorded in the Office of the
Recorder of Deeds in and for New Castle
County, Delaware, in Deed Record 2926, Page
232, granted and conveyed unto Lavette East-
man, in fee.

Being the same lands and premises which
Lavette Eastman, by Deed dated February 10,
2006 and recorded in the Office of the
Recorder of Deeds in and for New Castle
County, Delaware, in Deed Record 20060215-
0016055, granted and conveyed unto Michelle
Bullock-Farmer, in fee.

SEIZED AND TAKEN IN EXECUTION AS
THE PROPERTY OF MICHELLE BULLOCK-
FARMER.

TERMS OF SALE: 10% DOWN AT TIME OF
SALE. BALANCE DUE ON OR BEFORE
DECEMBER 21, 2009.

SEPTEMBER 30, 2009
2100487

LEGAL NOTICE

CITY OF NEWARK
DELAWARE

SPECIAL COUNCIL MEETING WEDNESDAY, NOVEMBER 18, 2009 - 7:00 PM

A Special Meeting of Council will be held on
Wednesday, November 18, 2009, at 7:00 pm
in the Council Chamber at which time Mayor
and Council will enter into Executive Session
to discuss Personnel.

Patricia M. Fogg, CMC
City Secretary
2107681

np 11/6

SHERIFF'S SALE

By virtue of a writ of Alias Lev Fac#169 SE,
AD., 2009.
Parcel No: 10-042.20-037
Property Address: 346 Kemper Drive, Newark,
DE 19702

ALL that certain lot, piece or parcel of land
known as Lot No. 355, Block B, Section Two,
Brookmont Farms, New Castle County, State
of Delaware, and being more particularly
bounded and described in accordance with a
recent survey prepared by Site Dimensions
dated May 9, 2007.

BEING the same property which by Deed
dated July 20, 2007 and recorded July 27,
2007 in Document No. 20070727-0066680
was granted and conveyed by Donald F. John-
son and Margaret P. Johnson unto Richard A.
Johnson.

SEIZED AND TAKEN IN EXECUTION AS
THE PROPERTY OF RICHARD A. JOHN-
SON.

TERMS OF SALE: 10% DOWN AT TIME OF
SALE. BALANCE DUE ON OR BEFORE
DECEMBER 21, 2009

SEPTEMBER 30, 2009
2100522

SHERIFF'S SALE

By virtue of a writ of Lev Fac#88 SE, AD.,
2009.
Parcel No. 11-032.10-114
Property Address: 249 Shai Circle, Bear, DE
19701.

ALL that certain lot, piece or parcel of land,
with the building thereon erected, known as
249 Shai Circle, situate in Pencader Hundred,
New Castle County and State of Delaware,
and being Lot No. 38 of the subdivision of
Spring Wood at Porter Square, Microfilm num-
ber 8739, and being more particularly bounded
and described in accordance with a survey by
the Pelsa Company dated March 10, 1992.

SUBJECT to Declaration of Restrictions
recorded in the Office of the Recorder of Deed
in and for New Castle County and State of
Delaware in Deed Book 557, Page 147, Deed
Book 557, Page 152 and Deed Book 603,
Page 284.

SUBJECT to a utility Agreement recorded in
the Office aforesaid in Deed Book 594, Page
25.

SUBJECT TO Right of Way Agreement
recorded in the Office aforesaid in Deed
Record L. Volume 102, Page 265 and Deed
Book 594, Page 25.

BEING the same lands and premises which
Summer Hill Associates, L.P., a Delaware Lim-
ited Partnership, by Deed dated February 11,
1988 and recorded in the Office of the
Recorder of Deeds in and for New Castle
County and State of Delaware in Deed Book
661, Page 57 granted and conveyed unto
Michael Ambrosino, Jr.

BEING the same lands and premises which
Michael Ambrosino, Jr., by Deed dated March
31, 1992 and recorded in the Office of the
Recorder of Deeds in and for New Castle
County and State of Delaware in Deed Book
1325, Page 125 granted and conveyed unto
Neil P. Smith and Irene Smith.

SEIZED AND TAKEN IN EXECUTION AS
THE PROPERTY OF NEIL P. SMITH AND
IRENE SMITH.

TERMS OF SALE: 10% DOWN AT TIME OF
SALE. BALANCE DUE ON OR BEFORE
DECEMBER 21, 2009.

SEPTEMBER 30, 2009
2100483

LEGAL NOTICE

SHERIFF'S SALE

By virtue of a writ of Lev Fac#96 SE, AD.,
2009.
Parcel No. 08-054.30-134
Property Address: 2 Maple Avenue, Newark,
DE 19711

ALL that certain lot, piece or parcel of land
known as 2 Maple Avenue, being Lot No. 1, as
shown on a record Major Subdivision Plan
recorded in and for New Castle County on
Microfilm Instrument No. 20070423-0036325,
for the subdivision of Roseville Park, Block C,
situated in Mill Creek Hundred, (Map Parcel
08-054.30-134) New Castle County, the State
of Delaware being more particularly located an
ascertained in the following metes and bounds
description as of a plan and survey by the
Pelsa Company, Inc., Land Consultants and
Surveyors, in accordance with the said record
plan.

SUBJECT TO any and all restrictions,
covenants, reservations, conditions, ease-
ments, agreements, rights-of-ways, and other
items of record in the Recorder of Deeds for
New Castle County of the State of Delaware.

BEING the same lands and premises which
were conveyed unto James P. Krapf, Jr. by
deed by Eric W. Ferguson and Cynthia D. Fer-
guson dated January 20, 2006 and recorded in
the Office of the Recorder of Deeds in and for
New Castle County, Delaware in Instrument
20060124-0008153.

BEING the same lands and premises which
were conveyed unto Richard E. Evans, by
deed of James P. Krapf, Jr dated June 19,
2007 and recorded in the Office of the
Recorder of Deeds in and for New Castle
County, Delaware in Instrument 20070619-
0054471.

SEIZED AND TAKEN IN EXECUTION AS
THE PROPERTY OF RICHARD E. EVANS.

TERMS OF SALE: 10% DOWN AT TIME OF
SALE. BALANCE DUE ON OR BEFORE
DECEMBER 21, 2009.

SEPTEMBER 30, 2009
2100493

SHERIFF'S SALE

By virtue of a writ of Lev Fac#94 SE, AD.,
2009.
Parcel No. 09-027.20-222
Property Address: 38 Fleming Street, Newark,
DE 19713

ALL that certain lot, piece or parcel land with
the dwelling thereon erected, situated in White
Clay Creek Hundred, New Castle county and
State of Delaware, known as 38 Fleming
Street, being Lot No. 76, Block C, as shown on
a Record Land development Plan, Section
One, Kimberton, recorded on August 25, 1971
in the Office of the Recorder of Deeds, in and
for New Castle County and Delaware, on
Microfilm No. 1819, and being more particu-
larly bounded and described in a recent survey
by the PELS A Company, Consultants and Sur-
veyors, Newark, DE, dated July 11, 2007.

Restrictions as Recorded in Deed Book K,
Page 364; Book K, Volume 84, Page 358;
Book P, Volume 85, Page 816 and Book P, Vol-
ume 85, Page 825, New Castle County
Records.

Valve Installation Agreement as Recorded in
Instrument# 20030225-0023317, New Castle
County Records.

BEING the same lands and premises which
James Simpson, Jr. and Nancy D. Simpson, by
Deed dated April 30, 2007 and recorded in the
Office of the Recorder of Deeds in and for New
Castle County, Delaware in Book 2335, Page
0327, did grant and convey unto Christopher
Berlin and Mary Berlin, in fee.

BEING the same lands and premises which
Christopher Berlin and Mary Berlin, by Deed
dated July 27, 2007 and recorded in the Office
of the Recorder of Deeds in and for New Cas-
tle County, Delaware as Instrument
#20070813-00717720, did grant and convey
unto Juan Carlos Cruz Alarcon, in fee.

SEIZED AND TAKEN IN EXECUTION AS
THE PROPERTY OF JUAN CARLOS CRUZ
ALARCON.

TERMS OF SALE: 10% DOWN AT TIME OF
SALE. BALANCE DUE ON OR BEFORE
DECEMBER 21, 2009.

SEPTEMBER 30, 2009
2100488

SHERIFF'S SALE

By virtue of a writ of Lev Fac#68 SE, AD.,
2009.

Parcel No. 09-028.40-093c1604
Property Address: 1604 Chelmsford Circle,
Newark, DE 19713

ALL that certain unit of real property existing
under and by virtue of the Unit Property Act of
Delaware, known as Unit No. 1604 Chelms-
ford Circle, Chelmsford, a condominium, situ-
ate in White Clay Creek Hundred, New Castle
County, Delaware, as said Unit is more particu-
larly bounded and described in (1) the Decla-
ration of Country Village Apartments, Inc.,
dated December 4, 1973, and recorded in the
Office of the Recorder of Deed [, in and for
New Castle County, Delaware, in Deed Record
Book P, Volume 88, Page 886; and (2) the
Declaration Plan of Chelmsford prepared by
Mann Talley, Inc., Civil Engineers and Survey-
ors, dated August 13, 1973, and recorded in the
Office aforesaid in Microfilm No. 2487.

TOGETHER with a proportionate undivided
interest in the Common Elements of Chelms-
ford, as said Common Elements are more par-
ticularly bounded and described in said Decla-
ration and Declaration Plan; which proportion-
ate undivided interest expressed in terms of a
percentage of the Common Elements as a
whole equals 0.8852%.

BEING the same lands and premises which
Carl J. Axenroth III and Sally Ann Axenroth did
by deed dated September 28, 2006 and
recorded in the office aforesaid in Instrument
No. 20060929-0093419 did grant and convey
unto Theresa E. Carroll.

SEIZED AND TAKEN IN EXECUTION AS
THE PROPERTY OF THERESA E. CAR-
ROLL.

TERMS OF SALE: 10% DOWN AT TIME OF
SALE. BALANCE DUE ON OR BEFORE
DECEMBER 21, 2009.

SEPTEMBER 30, 2009
2100473

SHERIFF'S SALE

By virtue of a writ of Lev Fac#86 SE, AD.,
2009.

Parcel No. 09-037.40-289
Property Address: 17 Flint Hill Drive, Newark,
De 19702.

ALL that certain lot, piece or parcel of land sit-
uate in White Clay Creek Hundred, New Cas-
tle County, State of Delaware, being Lot No.
241 (also known as 17 Flinthill Drive), as
shown on the Record Resubdivision Plan of
Salem Woods, Phase II, prepared by Karins
and Associates, Inc., recorded November 19,
1986, in the Office of the Recorder of Deeds in
and for New Castle County, State of Delaware,
in Microfilm No. 8393.

SUBJECT to any and all restrictions, reser-
vations, conditions, easements and agree-
ments of record in the Office of the Recorder of
Deeds in and for New Castle County,
Delaware.

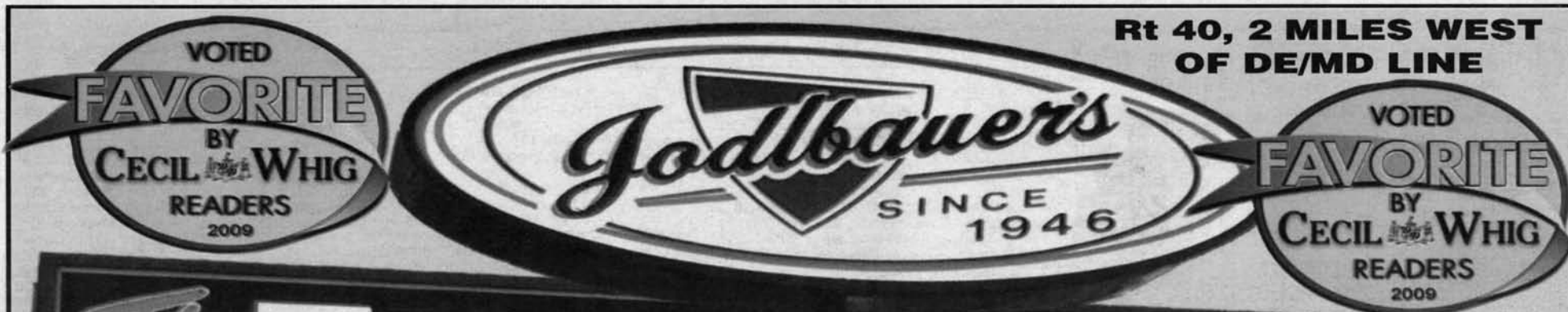
BEING the same lands and premises which
Hollistine J. Harmon, by Deed dated April 14,
1981, recorded in the Office of the Recorder of
Deeds in and for New Castle County, State of
Delaware in Deed Book 0857, Page 0231, did
grant and convey unto Kanha Phouthisone,
Guardian of Smaith Linda Phouthisone and
Sandy Phouthisone, in fee.

BEING the same lands and premises which
Kanha Phouthisone, Guardian of Samith Linda
Phouthisone and Sandy Phouthisone pursuant
to a Chancery Court Order issued out of the
Chancery court in and for New Castle County
and State of Delaware under Civil Action CM
5739 and dated March 14, 1989; Samith Linda
Phouthisone as Beneficial Owner as Beneficial
Owner pursuant to same order; and Sandy
Phouthisone as Beneficial Owner Pursuant to
same order, by Deed dated February 26, 2004,
recorded in the Office of the Recorder of
Deeds in and for New Castle County, State of
Delaware as Instrument Number 20040322-
0031908, did grant and convey unto Kanha
Phouthisone, in fee.

SEIZED AND TAKEN IN EXECUTION AS
THE PROPERTY OF KANHA
PHOUTHISONE.

TERMS OF SALE: 10% DOWN AT TIME OF
SALE. BALANCE DUE ON OR BEFORE
DECEMBER 21, 2009.

SEPTEMBER 30, 2009
2100481



**Rt 40, 2 MILES WEST
OF DE/MD LINE**

The **FURNITURE** **PEOPLE**

**THANK YOU FOR
VOTING US #1
FURNITURE STORE
4 YEARS RUNNING
FOR CECIL COUNTY**

**Order Your Living Room, Dining Room, Bed Room
Guaranteed Delivery for the Holidays***

**NOTHING HELD BACK
NO REASONABLE
OFFER REFUSED!**

*Certain items excluded. See your sales rep for details.

**Come in with this ad ad receive an
EXTRA 10% OFF our already reduced prices**

*All prior sales
excluded



BUY NOW...SAVE NOW...ENJOY NOW... NO INTEREST CHARGE FOR 1 YEAR



901 E. Pulaski Hwy., Rt. 40, Elkton
410-398-6201

Bus Hours 10AM - 6PM Sun 12 noon - 5PM

701 E. Pulaski Hwy., Rt. 40, Elkton
410-398-5402