



P

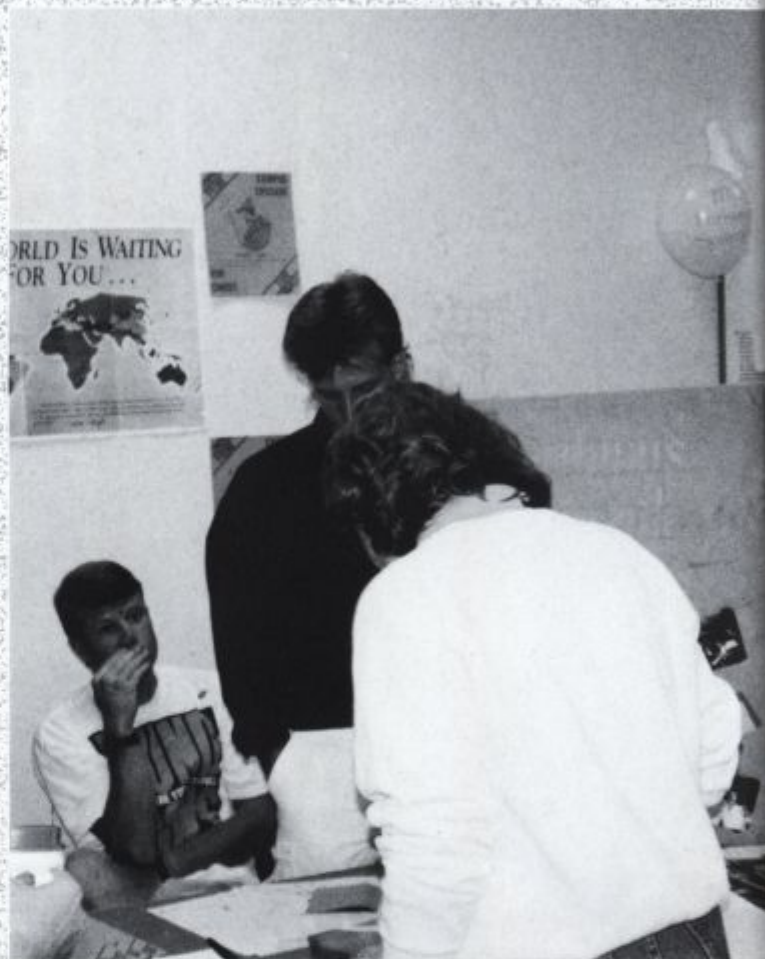
ARTICI- PATING

by cindy smith



Campus Crusade for Christ

Campus Crusade for Christ is a Christian organization that seeks to introduce students to the claims of Christ. Weekly Bible studies, discussion groups, and weekly meetings at the Student Center help students understand Jesus and his role in their lives.



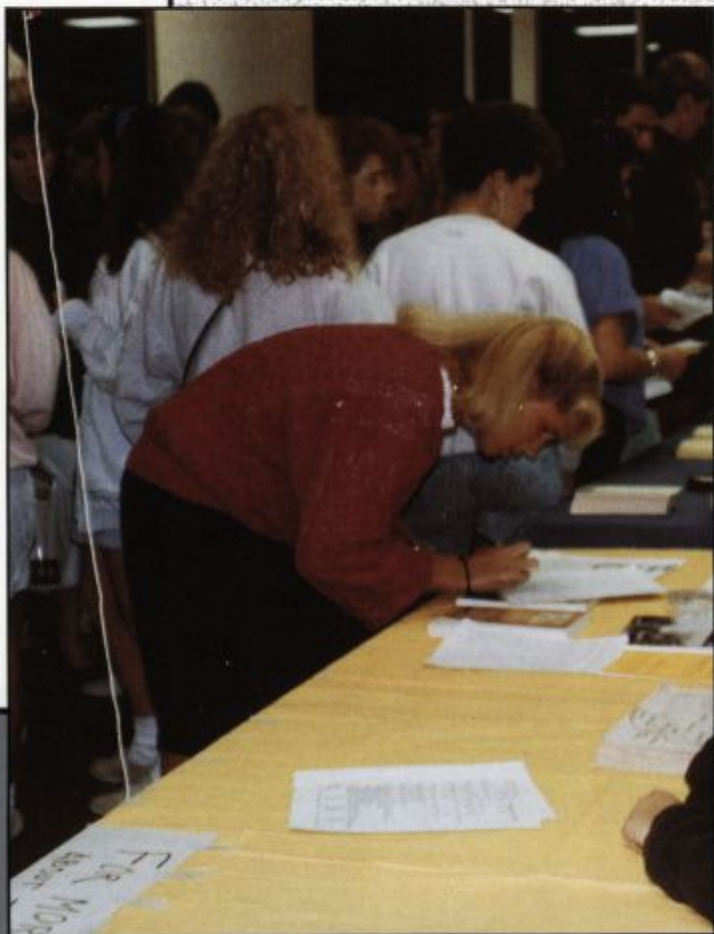


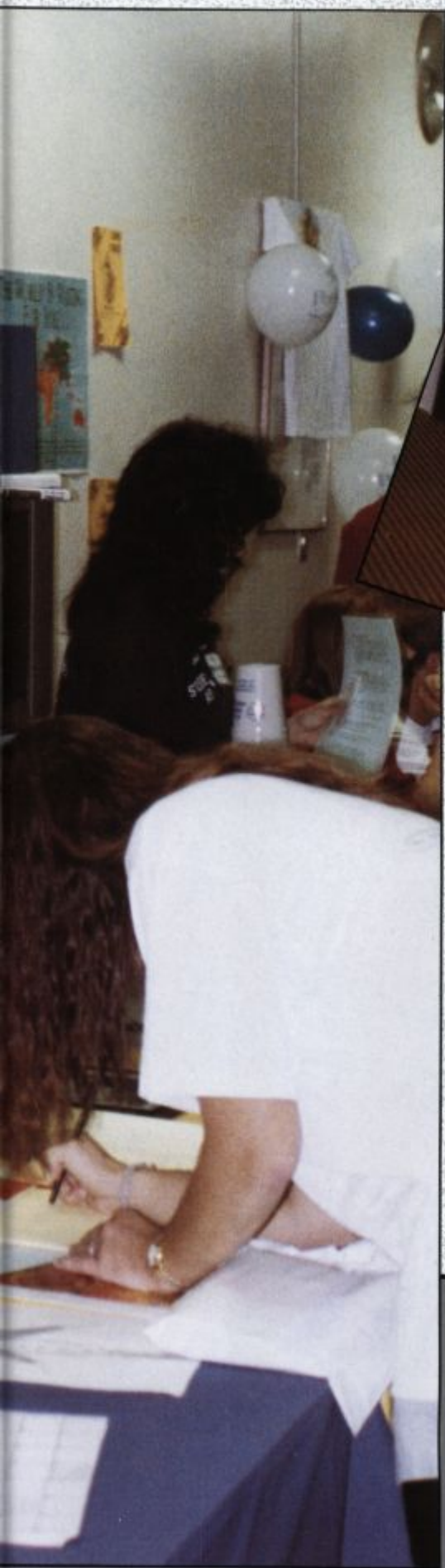
Inter- Varsity Christian Fellowship

Inter-Varsity Christian Fellowship is a student led inter-denominational Christian group on campus. It is subdivided by regions of campus in order to meet the different needs of the students. Some of their activities include Friday night meetings, Bible study groups, book tables, picnics, and community service projects. This year about 250 students were involved and anyone interested in studying the Bible, meeting Christian students and having a good time is welcome.



Student Activities Night





Student Environmental Action Coalition

Founded in the fall of 1989, the Student Environmental Action Coalition consists of students from all levels and facets of university life. This campus chapter of a nationwide alliance of student advocacy groups considers education of both the on and off-campus community to be its main goal. In order to promote basic behavioral changes in each individual, SEAC works to combine awareness of ecological problems with pragmatic solutions. SEAC holds weekly meetings with an average attendance of 50 people employing a consensus-style vote to determine the group's agenda. A weekly update newsletter is distributed to over 125 members. In the Spring semester of 1990 the group was involved in a number of activities including the organization of an environmental awareness fair, EarthFest '90 which coincided with the national celebration of Earth Day. We are also involved in the City of Newark's Adopt-A-Block program, performing weekly trash clean-ups of Academy St. from Main St. to Park Pl. In addition, the group sponsors an "Earth Facts" awareness program in the Review and on WXDR.





Cosmopolitan Club

The Cosmopolitan Club has enjoyed a very successful and enjoyable past year. The club is a student run organization that brings together foreign students with their American counterparts. Our membership for the year stands at about 120 students from seventy different countries. The highlight of the year is always "International Night" and this year was no exception. This event, in its twentyfirst year, provides the opportunity for foreign students to display their culture in the form of song, dance or costume. All 400 members of the audience witnessed a colorful and exciting spectacle unlike anything else on campus.





Institute for Electronic and Electrical Engineers

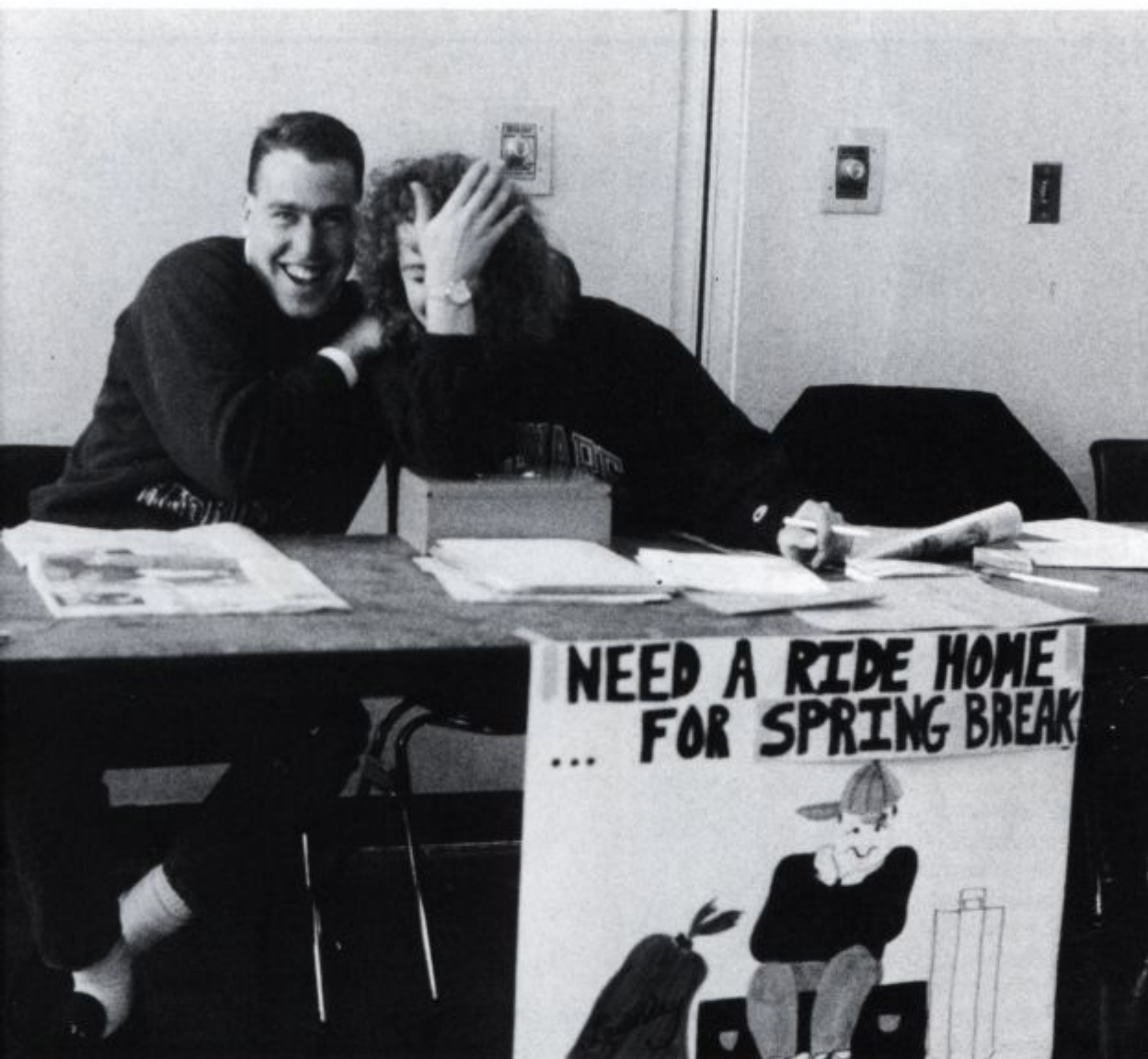
The Institute for Electronic and Electrical Engineers is a professional organization for all Electrical Engineers that has a student membership of about 70 here at the University of Delaware. The IEEE sponsors many activities for its members, both technical and social. These activities include guest speakers, access to technical journals, annual undergraduate vs. graduate students football and softball games, tailgate parties, and more.



Resident Student Association

The Resident Student Association is the governing body for all students who reside on campus. It is the second largest student organization here at the University and takes pride in being self-supporting. Many services are provided through RSA. RSA sponsors carpet sales and the well-known refrigerator rentals. In addition, we distribute student directories and sponsor bus rides home for Thanksgiving and Spring Break. RSA also helps to relive some of the pressure during final exams by distributing fruit baskets. Students, however, are not the only ones to benefit from RSA's involvement. Outside organizations like the Blood Bank of DE and the needy prosper, through RSA's assistance in the blood drive and sponsorship of the Hunger Awareness Dinner. RSA serves as an important liaison between the University of Delaware administration and resident students to improve life on campus. At weekly meetings students voice their concerns and RSA take action. The Resident Student Association is proud to serve University of Delaware students and hopes to continue this fine tradition in the future.





Returning Adult Student Association

The Returning Adult Student Association is an organization of students who are continuing their formal education after some years in the business world or at home, or who are 25 years of age or older and are matriculated full or part-time undergraduate or graduate students at the university. RASA was organized in 1976 and has been active on the ad hoc committee that was successful in having Daugherty Hall opened as a student facility. It sponsors weekly support groups through the Center for Counseling and organizes social activities.





Off-campus Student Assoc.

The Off-Campus Student Association is an organization designed to represent the needs of students living off campus, through student government. It holds bi-weekly meetings with an opportunity for students to express their concerns. We communicate to our 6,300 members through a newsletter published twice a semester. Our fifty active members all take part in planning events such as hayrides fruit/uppport baskets, and a semi-formal.



Delaware Undergraduate Student Congress

The Delaware Undergraduate Student Congress (DUSC) serves several functions as the official student government. First, the DUSC is responsible for communicating the desires and needs of the student body to the faculty, administration, and Board of Trustees. DUSC also sponsors various services and events for students. This year marks the beginning of two new services, a DUSC hotline, which promises an answer to student questions within 24 hours, and the Student Legal Service, which provides students with free legal advice. One of the biggest projects of each spring is D-Day, a day long party thrown for the students and the community.





E-52

E-52 is a student-run theatre group with approximately fifty committed members. The group's main objectives are to involve students in all aspects of theatre and to expand appreciation of theatre throughout the university. The key activities this year were a musical, Cabaret, a sixties revival of A Midsummer Night's Dream, an original play, Imaginary Friend, and an historical comedy, Neil Simon's Fools. Some smaller productions included The American Century, "Night Mother" and Halfway There. E-52 also sponsored numerous cultural and social events, including a trip to see Joseph and the Amazing Technicolor Dreamcoat in Philadelphia and an End of Season banquet.





Harrington Theatre Arts Company

The Harrington Theatre Arts Company (H.T.A.C.) offers students an exciting extracurricular alternative. The Company stages two to three full scale productions per academic year ranging from Broadway musicals to plays and original, as well as presenting projects in residence halls all over campus each semester. Past seasons have included productions of Anything Goes, Barefoot in the Park, Arsenic and Old Lace, Baby with the Bathwater, Grease, Once Upon a Mattress, Applause and Collage to name a few.

SAVE WOLF STAGE



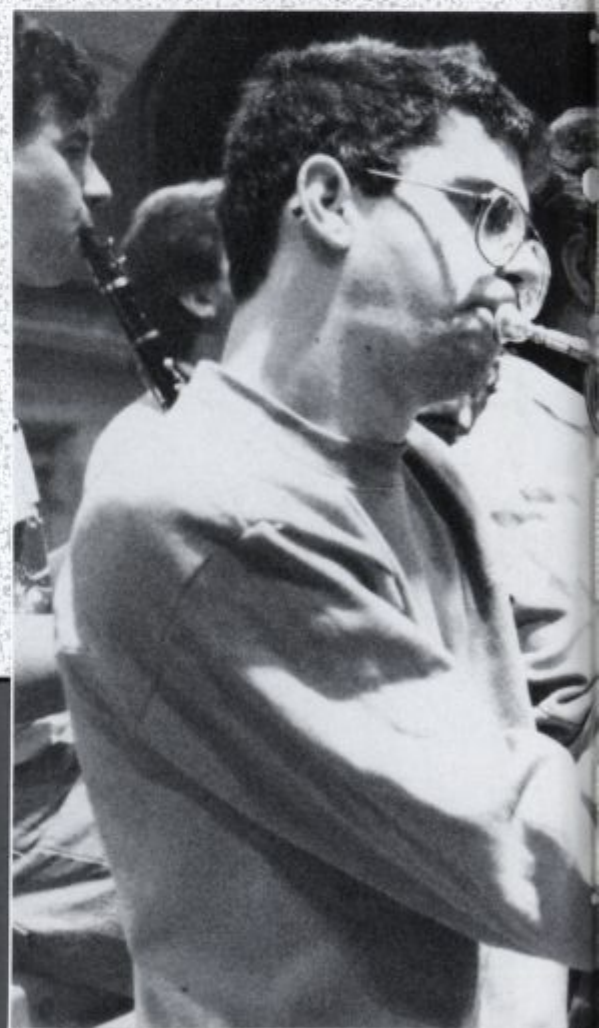
Don't Let the Curtain Fall...

E-52 Student Theatre and the Harrington Theatre Arts Company have joined forces with the Delawarean Undergraduate Student Congress to fight the destruction of the stage in 300 Wolf Hall. Without this performance space, all student theatre on campus will be in danger of extinction. We need your help now. Call 491-1282.

300

University of Delaware Marching Band

The Band presents a traditional pregame show along with a corps style halftime show before Delaware fans at each home football game. The Marching Band consists of Silks, Golden Girls, a percussion line, brass and woodwinds.





Cheerleaders

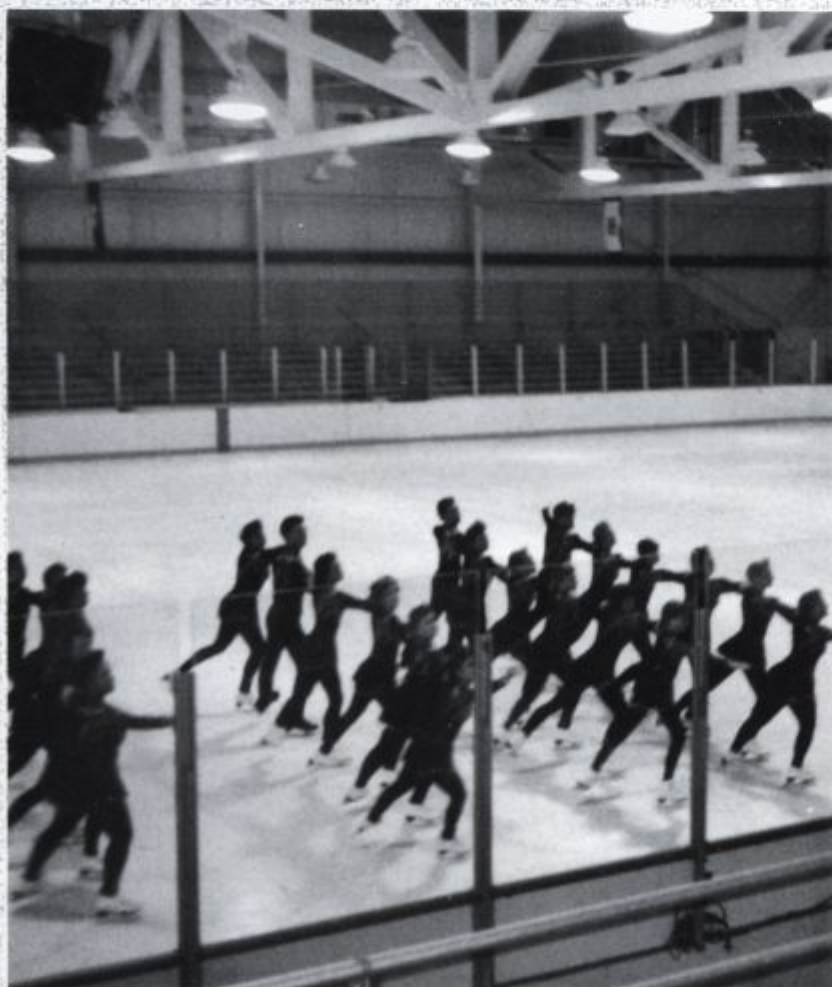




Outing Club

The Outing Club's main goals are to give students a chance to get away from the University Campus, meet new people, learn new skills and practice old ones. This year the club went backpacking, rock climbing, caving, white water rafting and canoeing. This group is an affordable way to get out and see new places while trying things one never thought they could do.



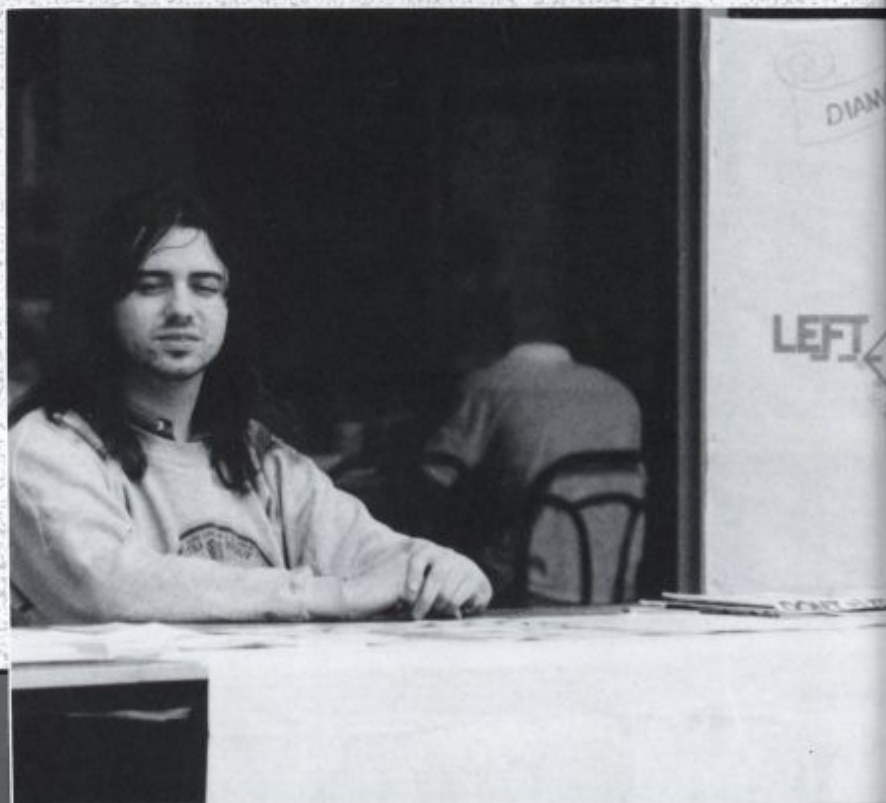


Precision Skating Team

The Precision Skating Team who call themselves the "Precisionaires" are a competitive precision ice skating team that competes in local, regional, sectional, national and international levels. They also skate in local ice shows and exhibitions.



MANRRS
Young Libertarians





Sailing Club

Arnold Air Society

The Arnold Air Society is the honor/service society of the AFROTC at the University of Delaware. The purpose of the AAS is to increase public awareness about the POW/MIA question, increase public awareness of the Air Force, participate in community and university activities, and provide motivated AFROTC cadets with extra-ordinary leadership opportunities. The Society is composed of 30 members (all ROTC cadets) who desire to get involved with the student body, the local community, and the Air Force. These students can be easily identified by the blue and gold forigere they proudly wear over their left shoulder. AAS has volunteered as aids for the YWCA "Latchkey Program" hosted a Blood Drive, helped build a children's park called "kidstown", visited the U of D Adult Day Care on holidays, volunteered for both the Juvenile Diabetes and March-of-Dimes Walk-a-Thons, and sold POW/MIA bracelets to the University student body.







WXDR

WXDR is the non-profit radio station at the University of Delaware dedicated to serving both the University and the Community. WXDR offers a variety of programs ranging from Club 91.3 to Back Porch Blue Ridge. The Staff is a mixture of students and the community members volunteering their time in an effort to link the University and Newark. Each March the station has it's annual fundraiser "Radiothon" with events such as concerts and road races. WXDR — Something for Everyone!





National Student Exchange

From Guam and Hawaii to Maine and from Minnesota to the U. S. Virgin Island, the choice is yours! Through the National Student Exchange program any full-time University of Delaware student with a 2.5 or better GPA can apply to spend a semester or a year at one of 87 participating colleges the in-state rate of the host institution or at the regular rate paid at the University of Delaware. Financial aid is often available. Essentially you can go on NSE at little or no extra cost. Credits

taken while on NSE transfer back to the University of Delaware. Delaware is also enriched by having about 50 students from vast cultural and geographic backgrounds spend up to a year on our campus. Through Delaware's National Student Exchange Club, these students explore much of the east coast.



Student Council For Exceptional Children

The Student Council for Exceptional Children, SCEC, is an organization of students interested in the educational and social development of exceptional children. Membership is open to students of all majors interested in working with this special population. Under the initiative of Sandy Angster, elementary/special education senior, the organization was reactivated in the fall of 1988. Over the past year student membership has grown to its present enrollment of nearly fifty members. This year's activities have included participation in the construction of Kids' Town (playground at Meadowood/Forest Oak School) a Halloween trick-or-treat and party with residents of Smyth Hall for exceptional children from the surrounding areas, and a Christmas caroling party for students at the Meadowood School, which included a visit from Santa! SCEC also provides a babysitting service for families with exceptional children in the area.





College of Education College Council

Everyone in the College of Education is invited to attend all meetings and activities. There are approximately 20-30 active members. The E.C.C. was organized to provide education majors with pertinent information concerning the field of education and with the opportunity to socialize and to help others in the field. The E.C.C. offers opportunities to gain experiences by working with children in the community, to acquire knowledge through guest speakers, and to create materials for practical use in student teaching. In addition, the organization works toward improvements in the University by proposing changes to the administration and by working with DUSC to voice student opinions, ideas, and problems.





Business and Economics College Council

The Business & Economics College Council was re-organized this year to give students a way of channelling their suggestions and ideas to various deans and faculty members. Our main objective for the 1989-1990 school year is to provide assistance to students/faculty/administrators so we can all work together for our mutual benefit. As officers, we have attempted to make your experience here at the University of Delaware's College of Business and Economics an academically and socially rewarding one.

The Council began this year by holding a small, informal reception open to all business students and faculty. This allowed interaction in an informal and non-academic atmosphere. We also surveyed the students in Purnell Hall about their perceptions of the college.

Also, as part of BECC's objective, we held general **Office Hours** whereby concerned students could meet with us to solve any problems. The Council also coordinated a trip to the New York Stock Exchange, held our annual apparel sale, and sponsored happy hours for business seniors. We worked closely with the Dean's Office on other activities including a **Logo Contest** for our College, end-of-year **Teacher Excellence Awards**, the annual **Student/Executive Business Conference**, and the Business & Economics College Picnic.

In preparing for future years, we also assisted the Board of Trustees and the student government in the Presidential Selection process for E. Arthur Trabant's successor.

Our primary goal this year was to provide a better learning environment to help business students here at the University of Delaware. With the assistance of the Dean's Office, the Advisement Center, the Student Activities Office, and the Delaware Undergraduate Student Congress (DUSC), BECC has provided the needed leadership to accomplish this goal. We wish success to all of our graduates.





Gamma Sigma Sigma

Gamma Sigma Sigma is a national organization of young women joined together in sisterhood for the purpose of serving the university and community. The Beta Gamma chapter is comprised of 115 members who collectively engage in over 2,000 hours of service a semester. Sisters work with the Newark Senior Center and Little Sisters of the Poor providing companionship and activities for senior citizens; the Mary Campbell Center assisting physically handicapped residents in letter writing; the Emoja program tutoring delinquent children and offering a valuable role model; Parents Anonymous of Delaware facilitating counselling sessions for physically and sexually abused children; the Read-a-Loud Program reading to young children awaiting appointments with doctors; the American Heart Association dressed as the "tin man" distributing information about healthy hearts to children; the A.I. DuPont Institute providing entertainment and companionship for children receiving long term medical care; and numerous other projects engaging in fun and rewarding activities such as playground building, building and spooking a "haunted barn", sponsoring a needy family, and working with the on-campus blood drives.

The social side of Gamma Sig allows sisters to attend mixers with fraternities, nacho nights with sisters, and an end of the semester semi-formal, as well as many other social events.

In August, 1989, the Beta Gamma chapter of Gamma Sigma Sigma received the Outstanding Chapter Award, an honor bestowed by our National Organization upon one chapter every two years.



The Review

The Review, the university's student-run newspaper, made a significant change this year. Switching from a tabloid, which it had been since its inception in the 1880s, the newspaper went to a broadsheet format, the size of many professional newspapers.

Although the newspaper changed its look, it did not change its ideals or news values. The mission of *The Review* is to report the news of the university and its community accurately, fairly and objectively. The newspaper also serves an entertainment function with features and sports stories. Perhaps the most important function of the newspaper is its opinion page, where campus dialogue allows students, faculty and administration a forum to discuss relevant campus issues.

The newspaper staff consists of about 35 students and a group of about 25 reporters. Although most of the students go through the journalism program at the university, students from all of campus are welcome to write for the newspaper. *The Review* publishes twice a week on Tuesdays and Fridays and is student-run and financially independent. *The Review* earned a four-star All-American rating from the Associated Collegiate Press for writing and editing, content and coverage, opinion content and coverage, and photography and art. The editor in chief of *The Review* is Ted Spiker, and the executive editor is Mark Nardone.



Student Alumni Assoc.

The University of Delaware Undergraduate Student Alumni Association is a student-run organization founded in 1984 which strives to bring together past and present Delaware students. We work closely with our parent body — the Alumni Association — to both promote and strengthen support for the University. The ways in which we accomplish this goal are as varied as the people who contribute to our events.

Students receive the opportunity to meet with successful Delaware graduates who offer career leads, advice and friendship. In addition, the SAA provides leadership and management opportunities through the planning and staging of our activities. Our thirty members are actively involved in the University through the Student Connection (a "big brother/sister" program for Dickinson freshmen), the Day on the Job program, senior seminars, retirement home visits, and working in the Delaware Annual Fund Phonathon. SAA members serve as ambassadors at major events on campus, such as receptions, dinners and ceremonies.



Lesbian Gay Bisexual Student Union

The Lesbian Gay Bisexual Student Union has been a registered student organization since 1972, making it one of the oldest gay college groups in existence. In those years the group has undergone much growth and many changes that reflect the positive transformations in the national gay community and American society in general.

The LGBSU is dedicated to providing a safe comfortable environment for people to openly express and explore their sexuality. We are a diverse group, representing all races, sexes, religions, sexual orientations and favorite flavours of ice cream.

The LGBSU sponsors many political, social, and educational activities for the University and the Newark community. The past year has been an active one for the LGBSU with such events as our Lesbian/Gay Awareness Programs, National Coming Out Day activities, and our very successful Bisexual Gay Lesbian Awareness Days: Closet Outreach '90.

Through visibility and awareness, the LGBSU combats the ignorance and fear traditionally and incorrectly associated with homosexuality and bisexuality. Social changes begin with changing individual attitudes and perceptions. In the words of ACT-UP: SILENCE = DEATH but ACTION = LIFE. The LGBSU acts to dispel fear and prejudice within the Newark community and throughout the University of Delaware.

The LGBSU works to promote the social changes that will create an atmosphere conducive not only to lesbians, gays and bisexuals, but to all the diverse elements of the human community.





American Society of Interior Designers

The student chapter of the American Society of Interior Designers is a professional organization for Interior Design majors. The purpose of the student chapter is to afford students the opportunity to interrelate with design professionals and to gain knowledge of job opportunities and resources available in the Interior Design profession.

The ASID student chapter program provides guest speakers from the design community and offers participation in ASID professional/student activities. As a result of this participation, the Interior Design student is better prepared upon graduation to meet the challenges and opportunities available in Interior Design.

Mortar Board

Mortar Board is a national honor society of college seniors. Its members are recognized for dedicated service to the university community, superior scholarship and outstanding leadership. Each of the 200 Mortar Board chapters nationwide strive to support the ideals of the university, to advance a spirit of scholarship, to recognize and encourage leadership, and to establish a meaningful exchange of ideas as individuals and as a group.

At the university of Delaware the Tassel chapter is one of the most active in the nation, working to recognize outstanding faculty, help the less fortunate, academically advise students and promote positive examples to continually challenge the university community.



Art History Club

Student Organization for Israel

SOFI is a club that shows university of Delaware student's support for the State of Israel. SOFI was created in the Spring of 1988 to cultivate interest in Israel within the University community, through cultural programs and educational opportunities. The group was created by Debra Schwartz, along with help from the University Service department, a branch of the American Zionist Youth foundation. While starting off with only a handful of people, the group has grown to approximately 50 members.

SOFI was formed to fill the need for an independent pro-Israel organization. Separate from Hillel, SOFI deals strictly with Israel and her role in the Middle East. SOFI informs its members and the U of D community of large issues concerning Israel, including such topics as Kibbutzim, study abroad, Ethiopian Jewry, Israeli dancing, music and art. Through flyers, speakers, films and general meetings, SOFI brings the pro-Israel message to campus. SOFI is welcome to people of all religions, races and nationalities.

Emergency Care Unit

Established in 1976, UDECU is a student run organization which maintains a state certified Basic Life Support ambulance. All of the 40 + members are fully trained to respond to any medical emergencies on campus, and are available 24 hours a day. In addition they also provide emergency medical stand-bys for all of the major functions on campus. These include all major sporting events, concerts, and graduation.

The Art History Club, despite its small size has increased both in membership and recognition over the last five years of its existence at the University. We have approximately twenty five members and five officers. But the number of participants varies because many of our activities are open to anyone. Membership is not specifically limited to Art History Majors.

We have a wide range of activities which fluctuate from semester to semester. However one of our regular activities are our Faculty/Student Socials. These leisurely afternoon meetings give both the students and the faculty prime opportunities to communicate and get to know each other in an informal atmosphere. Since the Art History Department is so small the familiarity with the faculty that develops as a result of these Socials is quite reassuring. Our other activities include visiting various museums in Washington D.C. and New York, as well as other more local places. We also have movie nights, showing films on particular artists or movements of interest. One event which we have not had as often as we would like has been inviting guest speakers to speak on a variety of topics.

Over the course of our five year history, the Art History Club has tried to establish itself an identity independent from the Department of Art History. However, the Department has been very helpful with both financial and faculty support. We are still striving to become a completely self sufficient organization. We're not where we'd like to be yet but with our progressive growth in popularity we have hopes for a bright future. We also hope to provide many more activities for anyone who has an interest in any aspect of the art world whether they are an art history major or not.

Young Americans for Freedom

The UD chapter of Young Americans for Freedom (YAF) spent their first year on campus building the organization up and fighting the liberals and radical Left on campus.

YAF was started nationally 30 years ago by conservative leaders on the Sharon, CT estate of William F. Buckley Jr. in response to the growing trend of radicalism among America's youth. Realizing not all youngsters were not Leftists or Socialists, the leaders formed a group melding together the best ideas from Conservatism, Libertarianism and Traditionalism. Last year several students, led by Bryan Wilkes and Paul Erhardt IV, formed a chapter on campus.

UD YAF organized a demonstration outside ultra-liberal Senator Joe Biden's office, calling on him to vote in favor of restoring Oliver North's pension. The vote was in favor of the pension restoration and Sen. Biden voted for it. That, along with an aggressive membership recruitment, helped build the base of YAF on campus.

During the "Take Back the Night" anti-rape march, members of YAF distributed literature on self-protection and brochures on the advantages of using firearms for self-defense. YAF also participated in local canned food drive activities.

YAF sponsored Leslie Carbone, executive director of Accuracy in Academia, who spoke on "Campus Hypocrisy In the War Against Racism," and Miklos Martin-Kovacs, a Hungarian journalist who spoke on the "Fall Of Communism and What the Recent Changes Mean for the West."

When radical feminist Molly Yard came to campus to preach her brand of hatred against men, YAF sponsored a demonstration calling for the end of radical left-wing speakers with student tuition fees.

YAF will be back next year even stronger. So liberals BEWARE! As our honorary national chairman, former president Ronald Reagan, once said, "If not us, then who? If not now, then when?"

College Republicans

The College Republicans had an exciting year starting with a successful membership drive in September.

The CR's co-sponsored a rally with Young Americans for Freedom in front of Senator Joe Biden's Wilmington office in favor of restoring Lt. Col. Oliver North's pension. It was held the day before the vote in the Senate and was a success because Senator Biden voted for restoration!

We were the organization responsible for exposing the Faculty Senate's disgraceful decision in rejecting former Secretary of State George Shultz for a honorary degree on purely *political* reasons.

In the spirit of the "1,000 points of light," the CR's sponsored several canned food drives and worked on Habitat for Humanity projects.

The CR's also sponsored many top speakers, including Hungarian journalist Miklos Martin-Kovacs, state treasurer Janet Rzewnicki, and candidates for political office.

In closing up the year, we demonstrated against radical feminist Molly Yard with several other campus organizations. On Delaware Day, the CR's could be seen attacking various targets with water balloons, for those who paid to have their friends, enemies, Democrats, or lovers "assassinated."

Next year we'll be fighting the forces of evil/the College Democrats, and will be working vigorously for Republicans around the state.

Chi Epsilon

Chi Epsilon is the National Civil Engineering Honor Society. The first chapter was founded in 1922 at the University of Illinois by students wanting a fraternity that would recognize the student who excels in the fundamental qualities of the successful engineer, and who would use his abilities constructively in advancing the civil engineering profession. Today, Chi Epsilon has grown to consist of one-hundred-eleven chapters throughout the United States, ranging from the University of Alabama to Yale University. The Delaware Alpha Chapter was chartered at the University in 1985, becoming the 105th chapter. Since that time, the Chapter has initiated 138 members and is growing rapidly.

The selection of members is based upon Scholarship, Character, Practicality, and Sociability — the four primary requirements of a successful engineer. Initiation is currently held once a year usually at the end of the Fall Semester.



Omicron Nu

Omicron Nu, a Home Economics Honor society for men and women, was founded in April, 1912. It recognizes superior graduate and undergraduate excellence. Some of the activities sponsored by the chapter are the fall initiation ceremony, a 3.25 Brunch to recognize outstanding freshmen and sophomores majoring in home economics, and a graduate student forum in which graduate students answer questions concerning graduate programs in home economics. Their theme for 1989-1990 was "Ethical Dimensions of the Scholar" This topic assists members in exploring the meaning and dimensions of ethics and the implications for students and practitioners as well as for the social system.



Beta Beta Beta

Beta Beta Beta is a national biological honor society founded in 1922 by Dr. Frank G. Brooks at Oklahoma City University. The University of Delaware chapter, Alpha Psi, was founded on February 4, 1955. The purpose of Tri-Beta is "to form an honor society for students of the biological sciences and thereby, to stimulate sound scholarship, to promote the dissemination of scientific truth, and to encourage investigation of the life sciences." The society publishes a national quarterly journal, *Bios*.

In the past the Alpha Psi chapter has sponsored such activities as blood drives, tutoring, tree tagging, and field trips. The Alpha Psi chapter has also hosted a series of guest speakers in the biological and related sciences for over three decades, and this continues to be one of its most important functions. New leadership and renewed interest in the organization will make it possible to expand the function of this society in the University community.



Kappa Delta Pi

The Zeta Omicron chapter was established at Delaware in 1949. Members are initiated based on scholastic achievement and service to education and community life. Members exhibit the ideals of scholarship, high personal standards and promise in teaching and allied professions. It encourages improvement, distinction in achievement and contributions to education.

Persons elected to membership remain active for life through their annual dues. These dues contribute to the national headquarters and help finance the various monthly publications which members receive monthly. Members are encouraged to attend conferences and seminars while becoming a member on the national level.

On the local level, Kappa Delta Pi, initiates about 50 annually. Their activities include hosting the college of Education's Dean's List celebration every semester and numerous service projects ranging from tutoring to alumni relations.

Psi Chi

Psi Chi, the National Honor Society in Psychology is an affiliate of the American Psychological Association and a member of the Association of College Honor Societies. Its purpose is to "advance the science of psychology and to encourage, stimulate, and maintain the scholarship of the individual members of all academic fields, particularly in psychology." To achieve these goals, the University of Delaware chapter of Psi Chi has offered programs based on students' requests. This year, Dr. Kim Fromme welcomed us into her lab by explaining her research design to us and by talking about clinical psychology.



Alpha Zeta

Alpha Zeta, the agricultural honorary co-ed fraternity, began its Delaware Chapter on January 29, 1949. Currently there are 39 members and 5 faculty advisors. AZ's goal is to promote the profession of agriculture and to develop high standards of scholarship, leadership and character. Each year AZ organizes several service projects. During the fall farm tours are given to elementary school students teaching them a little about the animals, crops, equipment and the people run the farm. Other projects include recycling aluminum cans, blood drives and helping to organize the Agricultural College's semi-formal as well as Ag-Day.