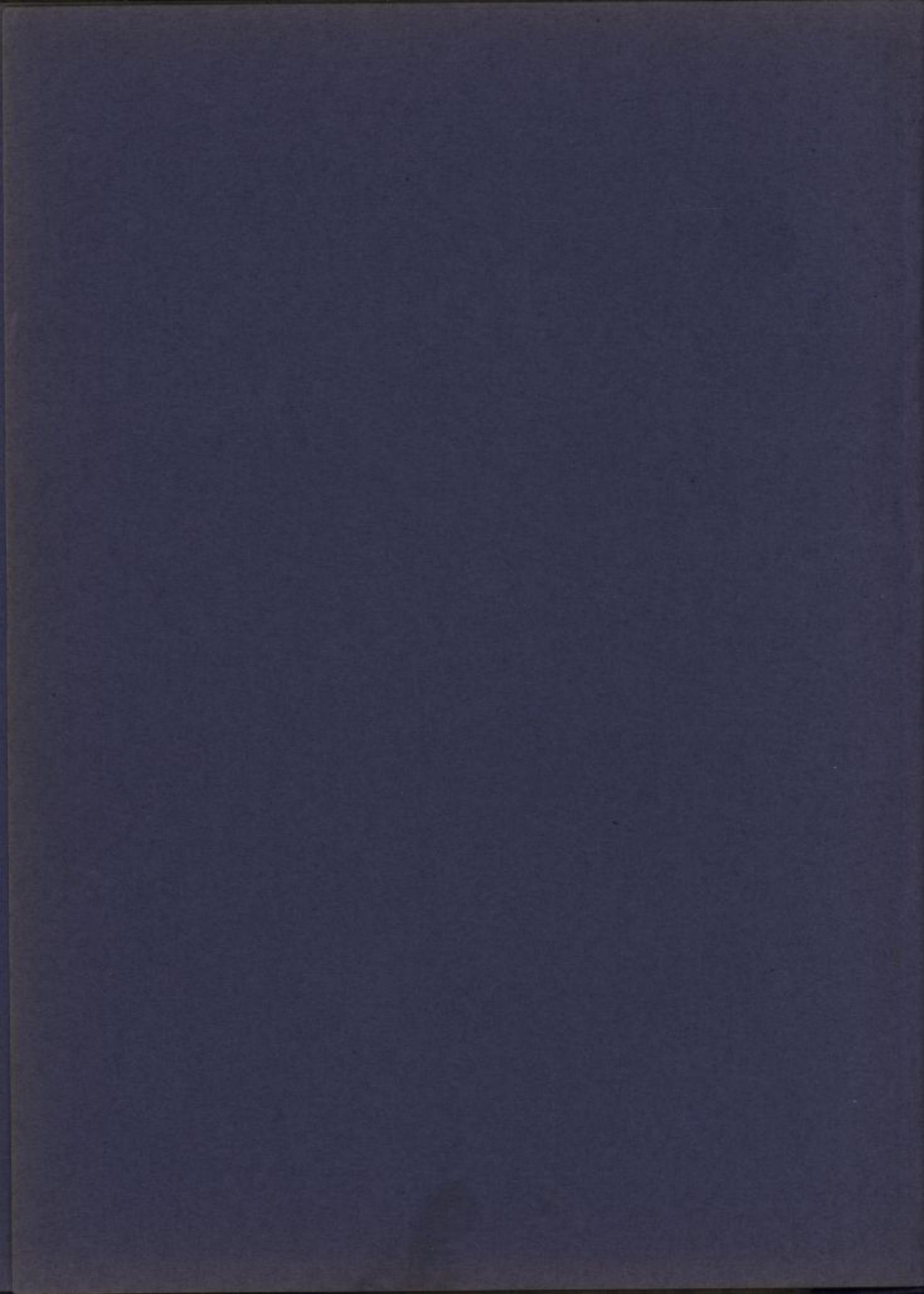
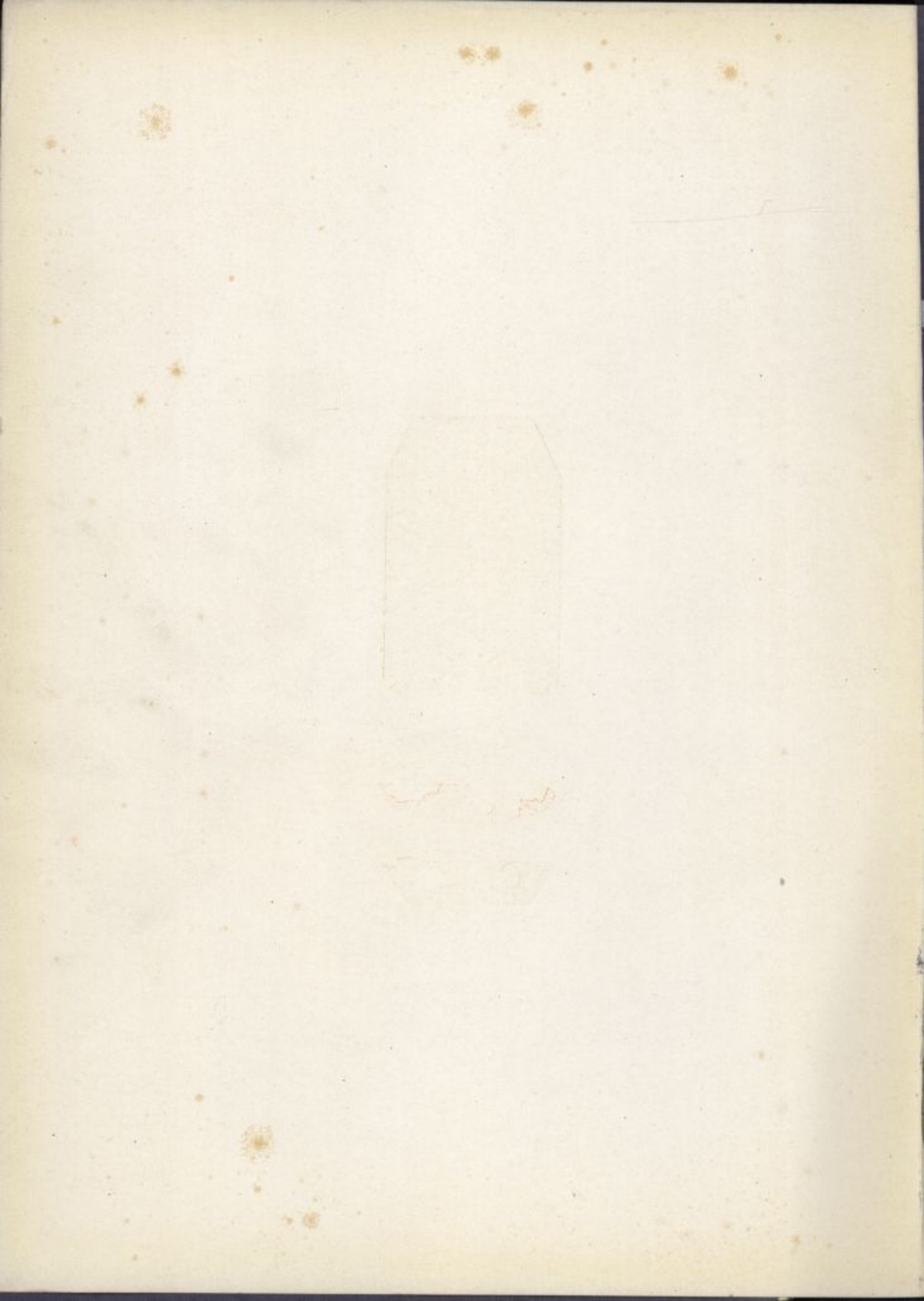


EX LIBRIS



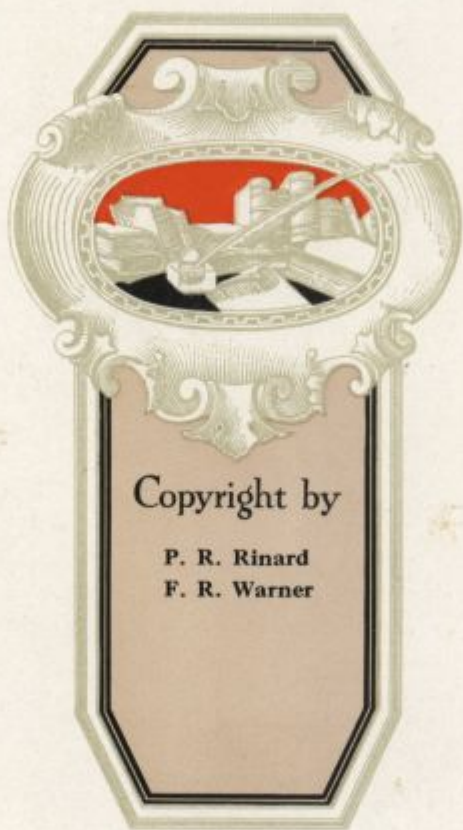
Illustration by [illegible]







University of Delaware
Library



902 985
2/15/06

THE BLUE HEN

The
BLUE HEN

1925-1926

2

EDITED BY
THE CLASSES OF 1925-1926
OF
DELAWARE COLLEGE, UNIVERSITY OF DELAWARE
NEWARK, DELAWARE

1488
.B58
1925-1926
C.2

THE BLUE HEN

To
Arthur G. Wilkinson

whose zeal in administering
the business affairs of the
University is only surpassed
by his faith in its under-
graduates



A. G. W. Pinson

