

Drive Carefully  
Be Sure That YOU  
Avoid An Accident

# THE NEWARK POST

For News  
Of People You Know  
Read The Post

The Newark Post, Newark, Delaware, Thursday, August 31, 1961

PRICE SEVEN CENTS

## Public Schools Bus Schedules Arranged In Newark District

Stiltz, Inc., Again Awarded Contract For Majority Of Public School Bus Transportation In Newark Area; Edwin Ralledge, Harry Moore To Serve Bear Vicinity

Bus schedules for the 1961-62 school year in the Newark district have been announced, with Stiltz, Inc., awarded contracts for a majority of the public school transportation in the district.

Edwin Ralledge and Mr. and Mrs. Harry Moore have received contracts for transportation in the Bear area, and Clifton Hufnagel will operate the bus serving the class of mentally retarded at the Clifton Elementary School.

Central Junior and Senior High School

Corner Ketch at 7:20; Pleasant Hill, Thompson Road, Possum Road.

Cochran's store at 7:20; Pike Rankin, Ebenezer roads, Paper Mill Road.

PRR on Red Mill Road at 7:30; Dr. Drummond; Pike Creek; Pike Trail, Delaplane Manor.

Harmony Hills at 7:35; North Capitol Trail between Harmony and Red Mill roads.

BAO overpass on Barksdale at 7:35; Barksdale Road; Christine, Nottingham Road.

Mechanicsville at 7:35; New Elton and Elton roads.

Windy Hills at 7:30; Capitol Hill at 7:30; Capitol Hill at 7:30; Capitol Hill at 7:30.

Capitol Hill at 7:30; Capitol Hill at 7:30; Capitol Hill at 7:30.

Capitol Hill at 7:30; Capitol Hill at 7:30; Capitol Hill at 7:30.

Capitol Hill at 7:30; Capitol Hill at 7:30; Capitol Hill at 7:30.

Capitol Hill at 7:30; Capitol Hill at 7:30; Capitol Hill at 7:30.

Capitol Hill at 7:30; Capitol Hill at 7:30; Capitol Hill at 7:30.

Capitol Hill at 7:30; Capitol Hill at 7:30; Capitol Hill at 7:30.

Capitol Hill at 7:30; Capitol Hill at 7:30; Capitol Hill at 7:30.

Capitol Hill at 7:30; Capitol Hill at 7:30; Capitol Hill at 7:30.

Capitol Hill at 7:30; Capitol Hill at 7:30; Capitol Hill at 7:30.

Capitol Hill at 7:30; Capitol Hill at 7:30; Capitol Hill at 7:30.

Capitol Hill at 7:30; Capitol Hill at 7:30; Capitol Hill at 7:30.

Capitol Hill at 7:30; Capitol Hill at 7:30; Capitol Hill at 7:30.

Capitol Hill at 7:30; Capitol Hill at 7:30; Capitol Hill at 7:30.

Capitol Hill at 7:30; Capitol Hill at 7:30; Capitol Hill at 7:30.

Capitol Hill at 7:30; Capitol Hill at 7:30; Capitol Hill at 7:30.

Capitol Hill at 7:30; Capitol Hill at 7:30; Capitol Hill at 7:30.

Capitol Hill at 7:30; Capitol Hill at 7:30; Capitol Hill at 7:30.

Capitol Hill at 7:30; Capitol Hill at 7:30; Capitol Hill at 7:30.

Capitol Hill at 7:30; Capitol Hill at 7:30; Capitol Hill at 7:30.

Capitol Hill at 7:30; Capitol Hill at 7:30; Capitol Hill at 7:30.

Capitol Hill at 7:30; Capitol Hill at 7:30; Capitol Hill at 7:30.

Capitol Hill at 7:30; Capitol Hill at 7:30; Capitol Hill at 7:30.

Capitol Hill at 7:30; Capitol Hill at 7:30; Capitol Hill at 7:30.

Capitol Hill at 7:30; Capitol Hill at 7:30; Capitol Hill at 7:30.

Capitol Hill at 7:30; Capitol Hill at 7:30; Capitol Hill at 7:30.

Capitol Hill at 7:30; Capitol Hill at 7:30; Capitol Hill at 7:30.

Capitol Hill at 7:30; Capitol Hill at 7:30; Capitol Hill at 7:30.

Capitol Hill at 7:30; Capitol Hill at 7:30; Capitol Hill at 7:30.

Capitol Hill at 7:30; Capitol Hill at 7:30; Capitol Hill at 7:30.

Capitol Hill at 7:30; Capitol Hill at 7:30; Capitol Hill at 7:30.

Capitol Hill at 7:30; Capitol Hill at 7:30; Capitol Hill at 7:30.

Capitol Hill at 7:30; Capitol Hill at 7:30; Capitol Hill at 7:30.

Capitol Hill at 7:30; Capitol Hill at 7:30; Capitol Hill at 7:30.

Capitol Hill at 7:30; Capitol Hill at 7:30; Capitol Hill at 7:30.

Capitol Hill at 7:30; Capitol Hill at 7:30; Capitol Hill at 7:30.

Capitol Hill at 7:30; Capitol Hill at 7:30; Capitol Hill at 7:30.

Capitol Hill at 7:30; Capitol Hill at 7:30; Capitol Hill at 7:30.

Capitol Hill at 7:30; Capitol Hill at 7:30; Capitol Hill at 7:30.

Capitol Hill at 7:30; Capitol Hill at 7:30; Capitol Hill at 7:30.

Capitol Hill at 7:30; Capitol Hill at 7:30; Capitol Hill at 7:30.

Capitol Hill at 7:30; Capitol Hill at 7:30; Capitol Hill at 7:30.

Capitol Hill at 7:30; Capitol Hill at 7:30; Capitol Hill at 7:30.

Capitol Hill at 7:30; Capitol Hill at 7:30; Capitol Hill at 7:30.

Capitol Hill at 7:30; Capitol Hill at 7:30; Capitol Hill at 7:30.

Capitol Hill at 7:30; Capitol Hill at 7:30; Capitol Hill at 7:30.

Capitol Hill at 7:30; Capitol Hill at 7:30; Capitol Hill at 7:30.

## Academy Building Basement Readied For Thrift Shop

Area Welfare Committee To Reopen Thrift Shop At New Site On Sept. 8

The Newark Area Welfare Committee will reopen its Thrift Shop on Sept. 8, in the basement of the Academy Building on Main Street, with the Thrift Shop entrance to be from the rear of the building, on Academy Street.

The board of directors of the Academy Building, and Newark City Council have donated use of the basement rooms of the Academy Building for the Thrift Shop.

City Council made use of the rooms possible by putting in new electrical wiring; a new ceiling; and installing a railing at the rear entrance.

Colonel Donald L. Dutton and Robert Dutton, volunteered their labor, and with money and materials donated by various Newark business firms and citizens, have renovated the new shop.

Mrs. H. Griffith Jones, in charge of the donations section, and Mrs. C. Robert Kase, in charge of the Thrift Shop, will be at the Thrift Shop next Wednesday from 10 a.m. to 3 p.m. to receive clean, used clothing for sale.

Mrs. Donald Dutton, general chairman of the Thrift Shop, next Thursday, Sept. 7, with full day sessions for all students, a change from previous years when the first two sessions were only half-day.

Both Sept. 7 and 8 will be full day sessions for all students, a change from previous years when the first two sessions were only half-day.

Both Sept. 7 and 8 will be full day sessions for all students, a change from previous years when the first two sessions were only half-day.

Both Sept. 7 and 8 will be full day sessions for all students, a change from previous years when the first two sessions were only half-day.

Both Sept. 7 and 8 will be full day sessions for all students, a change from previous years when the first two sessions were only half-day.

Both Sept. 7 and 8 will be full day sessions for all students, a change from previous years when the first two sessions were only half-day.

Both Sept. 7 and 8 will be full day sessions for all students, a change from previous years when the first two sessions were only half-day.

Both Sept. 7 and 8 will be full day sessions for all students, a change from previous years when the first two sessions were only half-day.

Both Sept. 7 and 8 will be full day sessions for all students, a change from previous years when the first two sessions were only half-day.

Both Sept. 7 and 8 will be full day sessions for all students, a change from previous years when the first two sessions were only half-day.

Both Sept. 7 and 8 will be full day sessions for all students, a change from previous years when the first two sessions were only half-day.

Both Sept. 7 and 8 will be full day sessions for all students, a change from previous years when the first two sessions were only half-day.

Both Sept. 7 and 8 will be full day sessions for all students, a change from previous years when the first two sessions were only half-day.

Both Sept. 7 and 8 will be full day sessions for all students, a change from previous years when the first two sessions were only half-day.

Both Sept. 7 and 8 will be full day sessions for all students, a change from previous years when the first two sessions were only half-day.

Both Sept. 7 and 8 will be full day sessions for all students, a change from previous years when the first two sessions were only half-day.

Both Sept. 7 and 8 will be full day sessions for all students, a change from previous years when the first two sessions were only half-day.

Both Sept. 7 and 8 will be full day sessions for all students, a change from previous years when the first two sessions were only half-day.

Both Sept. 7 and 8 will be full day sessions for all students, a change from previous years when the first two sessions were only half-day.

Both Sept. 7 and 8 will be full day sessions for all students, a change from previous years when the first two sessions were only half-day.

Both Sept. 7 and 8 will be full day sessions for all students, a change from previous years when the first two sessions were only half-day.

Both Sept. 7 and 8 will be full day sessions for all students, a change from previous years when the first two sessions were only half-day.

Both Sept. 7 and 8 will be full day sessions for all students, a change from previous years when the first two sessions were only half-day.

Both Sept. 7 and 8 will be full day sessions for all students, a change from previous years when the first two sessions were only half-day.

Both Sept. 7 and 8 will be full day sessions for all students, a change from previous years when the first two sessions were only half-day.

Both Sept. 7 and 8 will be full day sessions for all students, a change from previous years when the first two sessions were only half-day.

Both Sept. 7 and 8 will be full day sessions for all students, a change from previous years when the first two sessions were only half-day.

Both Sept. 7 and 8 will be full day sessions for all students, a change from previous years when the first two sessions were only half-day.

Both Sept. 7 and 8 will be full day sessions for all students, a change from previous years when the first two sessions were only half-day.

Both Sept. 7 and 8 will be full day sessions for all students, a change from previous years when the first two sessions were only half-day.

Both Sept. 7 and 8 will be full day sessions for all students, a change from previous years when the first two sessions were only half-day.

Both Sept. 7 and 8 will be full day sessions for all students, a change from previous years when the first two sessions were only half-day.

Both Sept. 7 and 8 will be full day sessions for all students, a change from previous years when the first two sessions were only half-day.

Both Sept. 7 and 8 will be full day sessions for all students, a change from previous years when the first two sessions were only half-day.

Both Sept. 7 and 8 will be full day sessions for all students, a change from previous years when the first two sessions were only half-day.

Both Sept. 7 and 8 will be full day sessions for all students, a change from previous years when the first two sessions were only half-day.

Both Sept. 7 and 8 will be full day sessions for all students, a change from previous years when the first two sessions were only half-day.

Both Sept. 7 and 8 will be full day sessions for all students, a change from previous years when the first two sessions were only half-day.

Both Sept. 7 and 8 will be full day sessions for all students, a change from previous years when the first two sessions were only half-day.

Both Sept. 7 and 8 will be full day sessions for all students, a change from previous years when the first two sessions were only half-day.

Both Sept. 7 and 8 will be full day sessions for all students, a change from previous years when the first two sessions were only half-day.

Both Sept. 7 and 8 will be full day sessions for all students, a change from previous years when the first two sessions were only half-day.

Both Sept. 7 and 8 will be full day sessions for all students, a change from previous years when the first two sessions were only half-day.

Both Sept. 7 and 8 will be full day sessions for all students, a change from previous years when the first two sessions were only half-day.

Both Sept. 7 and 8 will be full day sessions for all students, a change from previous years when the first two sessions were only half-day.

Both Sept. 7 and 8 will be full day sessions for all students, a change from previous years when the first two sessions were only half-day.

Both Sept. 7 and 8 will be full day sessions for all students, a change from previous years when the first two sessions were only half-day.

Both Sept. 7 and 8 will be full day sessions for all students, a change from previous years when the first two sessions were only half-day.

Both Sept. 7 and 8 will be full day sessions for all students, a change from previous years when the first two sessions were only half-day.

Both Sept. 7 and 8 will be full day sessions for all students, a change from previous years when the first two sessions were only half-day.

Both Sept. 7 and 8 will be full day sessions for all students, a change from previous years when the first two sessions were only half-day.

## Newark YWCA Leaders At Smyth Center



Mrs. Robert T. Hall (left) has been named as program director, and Mary Dabolin has been appointed director of the Alice P. Smyth YWCA Center in Newark. Miss Dabolin succeeds Hilda Ebert as Newark YWCA director.

## Mary Dabolin, Mrs. Robt. T. Hall Named Smyth Center YWCA Director, Assistant

Mrs. Joseph Holton Jones, chairman of the Wilmington YWCA personnel committee, has announced that Mary Dabolin has been assigned as director of the Alice P. Smyth YWCA Center in Newark.

Miss Dabolin has been program director at the King Street Center in Wilmington. She is a graduate of Douglass College, Brunswick, N.J., has studied at the New York University school of social work; has had experience with the American Red Cross and worked for the Du Pont Company as a market analyst. She is active in the League of Women Voters.

Miss Dabolin will assume her duties tomorrow at the new YWCA building at 313 South College Avenue, Newark, which will be open for the fall program with renovations underway.

A graduate of William and Mary College, Mrs. Hall has taken graduate work at the University of North Carolina and the University of Virginia.

Associated with the Newark YWCA Center since 1959 on a part-time basis, Mrs. Hall is a member of the Newark New Century Club and the local AAUW.

The Rev. Marvin H. Hummel will give the invocation.

A district-wide luncheon will be served Sept. 5 in the Jennie E. Smith Cafeteria.

Administrative Assistant Robert W. Mayer and Thomas Cobley, principal of Gallaher School, are in charge of preparations for the conference.

The Rev. Marvin H. Hummel will give the invocation.

A district-wide luncheon will be served Sept. 5 in the Jennie E. Smith Cafeteria.

Administrative Assistant Robert W. Mayer and Thomas Cobley, principal of Gallaher School, are in charge of preparations for the conference.

The Rev. Marvin H. Hummel will give the invocation.

A district-wide luncheon will be served Sept. 5 in the Jennie E. Smith Cafeteria.

Administrative Assistant Robert W. Mayer and Thomas Cobley, principal of Gallaher School, are in charge of preparations for the conference.

The Rev. Marvin H. Hummel will give the invocation.

A district-wide luncheon will be served Sept. 5 in the Jennie E. Smith Cafeteria.

Administrative Assistant Robert W. Mayer and Thomas Cobley, principal of Gallaher School, are in charge of preparations for the conference.

The Rev. Marvin H. Hummel will give the invocation.

A district-wide luncheon will be served Sept. 5 in the Jennie E. Smith Cafeteria.

Administrative Assistant Robert W. Mayer and Thomas Cobley, principal of Gallaher School, are in charge of preparations for the conference.

The Rev. Marvin H. Hummel will give the invocation.

A district-wide luncheon will be served Sept. 5 in the Jennie E. Smith Cafeteria.

Administrative Assistant Robert W. Mayer and Thomas Cobley, principal of Gallaher School, are in charge of preparations for the conference.

The Rev. Marvin H. Hummel will give the invocation.

A district-wide luncheon will be served Sept. 5 in the Jennie E. Smith Cafeteria.

Administrative Assistant Robert W. Mayer and Thomas Cobley, principal of Gallaher School, are in charge of preparations for the conference.

The Rev. Marvin H. Hummel will give the invocation.

A district-wide luncheon will be served Sept. 5 in the Jennie E. Smith Cafeteria.

Administrative Assistant Robert W. Mayer and Thomas Cobley, principal of Gallaher School, are in charge of preparations for the conference.

The Rev. Marvin H. Hummel will give the invocation.

A district-wide luncheon will be served Sept. 5 in the Jennie E. Smith Cafeteria.

Administrative Assistant Robert W. Mayer and Thomas Cobley, principal of Gallaher School, are in charge of preparations for the conference.

The Rev. Marvin H. Hummel will give the invocation.

A district-wide luncheon will be served Sept. 5 in the Jennie E. Smith Cafeteria.

Administrative Assistant Robert W. Mayer and Thomas Cobley, principal of Gallaher School, are in charge of preparations for the conference.

The Rev. Marvin H. Hummel will give the invocation.

A district-wide luncheon will be served Sept. 5 in the Jennie E. Smith Cafeteria.

Administrative Assistant Robert W. Mayer and Thomas Cobley, principal of Gallaher School, are in charge of preparations for the conference.

The Rev. Marvin H. Hummel will give the invocation.

A district-wide luncheon will be served Sept. 5 in the Jennie E. Smith Cafeteria.

Administrative Assistant Robert W. Mayer and Thomas Cobley, principal of Gallaher School, are in charge of preparations for the conference.

The Rev. Marvin H. Hummel will give the invocation.

A district-wide luncheon will be served Sept. 5 in the Jennie E. Smith Cafeteria.

Administrative Assistant Robert W. Mayer and Thomas Cobley, principal of Gallaher School, are in charge of preparations for the conference.

The Rev. Marvin H. Hummel will give the invocation.

A district-wide luncheon will be served Sept. 5 in the Jennie E. Smith Cafeteria.

## Millersville Head To Address Staff Of Public Schools

Daniel L. Biemesderfer To Be Keynote Speaker At Pre-School Meeting

Daniel L. Biemesderfer, president of Millersville State College, will be the keynote speaker at the annual pre-school conference for the Newark special school district, with 400 teachers, administrators, and student teachers expected to attend the two-day conference on Sept. 5 and 6.

Following the opening session on Tuesday morning at Ogletown Junior High School, teachers will report to their schools in the district for faculty meetings and to make preparations for the opening of school on Sept. 7.

Other speakers at the Tuesday morning session will include Superintendent Wilmer E. Shue and William P. Cooke, vice-president of the board of education; H. Lewis Miller, administrative assistant, will introduce new teachers and staff members, and Administrative Assistant Ramon C. Cobbs will present the district's in-service training program for the coming year.

The Rev. Marvin H. Hummel will give the invocation.

A district-wide luncheon will be served Sept. 5 in the Jennie E. Smith Cafeteria.

Administrative Assistant Robert W. Mayer and Thomas Cobley, principal of Gallaher School, are in charge of preparations for the conference.

The Rev. Marvin H. Hummel will give the invocation.

A district-wide luncheon will be served Sept. 5 in the Jennie E. Smith Cafeteria.

Administrative Assistant Robert W. Mayer and Thomas Cobley, principal of Gallaher School, are in charge of preparations for the conference.

The Rev. Marvin H. Hummel will give the invocation.

A district-wide luncheon will be served Sept. 5 in the Jennie E. Smith Cafeteria.

Administrative Assistant Robert W. Mayer and Thomas Cobley, principal of Gallaher School, are in charge of preparations for the conference.

The Rev. Marvin H. Hummel will give the invocation.

A district-wide luncheon will be served Sept. 5 in the Jennie E. Smith Cafeteria.

Administrative Assistant Robert W. Mayer and Thomas Cobley, principal of Gallaher School, are in charge of preparations for the conference.

The Rev. Marvin H. Hummel will give the invocation.

A district-wide luncheon will be served Sept. 5 in the Jennie E. Smith Cafeteria.

Administrative Assistant Robert W. Mayer and Thomas Cobley, principal of Gallaher School, are in charge of preparations for the conference.

The Rev. Marvin H. Hummel will give the invocation.

A district-wide luncheon will be served Sept. 5 in the Jennie E. Smith Cafeteria.

Administrative Assistant Robert W. Mayer and Thomas Cobley, principal of Gallaher School, are in charge of preparations for the conference.

The Rev. Marvin H. Hummel will give the invocation.

A district-wide luncheon will be served Sept. 5 in the Jennie E. Smith Cafeteria.

Administrative Assistant Robert W. Mayer and Thomas Cobley, principal of Gallaher School, are in charge of preparations for the conference.

The Rev. Marvin H. Hummel will give the invocation.

A district-wide luncheon will be served Sept. 5 in the Jennie E. Smith Cafeteria.

Administrative Assistant Robert W. Mayer and Thomas Cobley, principal of Gallaher School, are in charge of preparations for the conference.

The Rev. Marvin H. Hummel will give the invocation.

A district-wide luncheon will be served Sept. 5 in the Jennie E. Smith Cafeteria.

Administrative Assistant Robert W. Mayer and Thomas Cobley, principal of Gallaher School, are in charge of preparations for the conference.

The Rev. Marvin H. Hummel will give the invocation.

A district-wide luncheon will be served Sept. 5 in the Jennie E. Smith Cafeteria.

Administrative Assistant Robert W. Mayer and Thomas Cobley, principal of Gallaher School, are in charge of preparations for the conference.

The Rev. Marvin H. Hummel will give the invocation.

A district-wide luncheon will be served Sept. 5 in the Jennie E. Smith Cafeteria.

Administrative Assistant Robert W. Mayer and Thomas Cobley, principal of Gallaher School, are in charge of preparations for the conference.

The Rev. Marvin H. Hummel will give the invocation.

A district-wide luncheon will be served Sept. 5 in the Jennie E. Smith Cafeteria.



## Mill Creek Hundred News

Sara Pennington Evans, Correspondent  
Phone CE 9-7798

Harmony Grange heard of its national achievement; dedicated a memorial gift; selected prize-winners in the crocheting contest; named delegates to Pomona Grange; and viewed pictures of Nova Scotia

at its first meeting since June, last Monday night.

This grange subscribed the second largest amount to the National Grange debt retirement program. More than 300 granges in the United States gave to this fund.

Mrs. Joseph Mitchell, chaplain, officiated at the memorial services dedicating the iron railing at the front entrance of the grange hall given by Mrs. Emma Walker Pennington, her brother Clarence Y. Walker, and their cousin, Mrs. Brea J. Woodward to the memory of their parents, James Henry and Albina Gregg Walker, and Charles H. and Sarah E. Rubencame, all charter members of the grange. Mr. Walker and Mr. Rubencame were past masters.

Mrs. Earl Furbush and Mrs. Sarah Sommers of Center Grange, judges, selected the following winners in the crocheting contest: Mrs. Joseph Mitchell, first, and Mrs. Leroy Parker, second, crocheted edge on pillow cases; Mrs. Mamie Talley, first, crocheted table cloth; Mrs. Parker, first, afghan. All first place winners will compete again in the county and state contests on Sept. 7 at the annual state home economics luncheon at Dover.

Delegates to New Castle County Pomona Grange, Sept. 14, at 8 p.m. will be Mrs. George Parris, Carl Lynam, and Mrs. Parker. Alternates are: William Pierson, Mr. and Mrs. Joseph Mitchell.

Mrs. Frank Cooper, lecturer, presented Karen Narvel with a grange pin, a gift from the National Grange for her essay in the Highways Essay Contest.

For the program, there were vacation echoes. Mr. and Mrs. Harold Pierce showed colored pictures and described their recent trip to Nova Scotia. Mr. and Mrs. Charles Woodward, and Mr. and Mrs. Leroy Parker also visited there this summer.

George Parris, Jr., told of his trip to Iowa and Mrs. Cooper told of taking her granddaughter Betsy to Nashville, Tenn., to view the Atlantic Ocean for the first time.

The next meeting will be held Sept. 11, with the annual election on Sept. 18, and Booster Night, the annual grange rally on Sept. 25.

The Southern States Cooperative annual dinner meeting will be held in the grange hall on Sept. 12. Mrs. George Parris and Mrs. Paul Mitchell are committee chairman of the meal.

The first grange card party for the fall will be held Sept. 19 with Mr. and Mrs. Charles R. Woodward, Mr. and Mrs. J. Paul Woodward, Mr. and Mrs. Leroy Parker, Mr. and Mrs. Archie Armstrong, in charge. Harmony Juvenile Grange will resume its regular monthly meeting at the hall tomorrow at 7 p.m., with Mrs. W. Harold Narvel, matron.

Red Clay Creek Presbyterian Church  
A recent letter from the Gordon Ruffs, missionaries at Dehra Dun, India, tells of their daughter Barbara coming to the states to enter Duke University School of Nursing at Durham, N. C. She left India

LETTERS TESTAMENTARY  
Estate of Elizabeth E. Layton Deceased. Notice is hereby given that Letters Testamentary upon the Estate of Elizabeth E. Layton late of Pencader Hundred, deceased, were duly granted unto Denny S. Marshall on the Seventh day of August A. D. 1961 and all persons indebted to the said deceased are requested to make payments to the Executrix without delay, and all persons having demands against the deceased are required to exhibit and present the same duly probated to the said Executrix on or before the Seventh day of May A. D. 1962 or abide by the law in this behalf.

Address: Elizabeth E. Layton, Attorney-at-Law, 400 North American Bldg., Wilmington, Del.  
Dorothy E. Glinsky, Executrix  
Aug. 17, 24, 31

LETTERS TESTAMENTARY  
Estate of Otey R. Marshall Deceased. Notice is hereby given that Letters Testamentary upon the Estate of Otey R. Marshall late of Pencader Hundred, deceased, were duly granted unto Denny S. Marshall on the Seventeenth day of August A. D. 1961 and all persons indebted to the said deceased are requested to make payments to the Executor without delay, and all persons having demands against the deceased are required to exhibit and present the same duly probated to the said Executor on or before the Seventeenth day of May A. D. 1962 or abide by the law in this behalf.

Address: Benjamin A. Brown, Attorney-at-Law, 516 Continental American Bldg., Wilmington, Del.  
Denny S. Marshall, Executor  
Aug. 24, 31; Sept. 7

July 29, and flew with school friends across the Pacific, stopping at Bangkok, Hong Kong and Tokyo and will visit her paternal grandparents in San Diego, before coming East. Barbara was awarded two scholarships, one from the university, and the other from the Board of Christian Education of the Presbyterian Church.

The Rev. Norman C. Farnhof, headmaster, of West Nottingham Academy, will be the guest speaker this Sunday at 9:30 and 11 a.m. services at the Rev. George T. Jamieson, pastor, will be on vacation through Sept. 5.

The chancel choir will resume rehearsals next Wednesday at 7:30 p.m. Carl Rehrg is director.

**Cesspools and Septic TANKS CLEANED**  
Odorless Excavating Anywhere  
For Guaranteed Lowest Prices  
Call

**William S. Hickman**

West Chester OW 6-3080

OR  
Wilmington OL 4-2455

**MASON CONTRACTORS**  
Brick - Block - Cement Work

**FREE ESTIMATES**  
on Additions - Alterations  
Repairs

**Whiteman Bros.**

EN 8-1387 EN 8-1530

### Announcement DR. OSCAR BREGMAN

Optometrist

77 East Main Street, Newark, Delaware  
wishes to announce the removal of his office to

317 East Main Street, Newark  
for the examination of the eyes  
and contact lens consultation

TELEPHONE EN 8-8777

### Hadley Plumbing & Heating Co.

A. M. "Jack" Hadley's Plumbing Shop on Wheels  
GUTTER & SPOUTING - HEATING DUCTS



Sales and Installation  
Gas & Electric Hot Water Heaters  
Warm Air Heating  
Pipe Fitting - Threading  
CALL EN 8-9121  
82 East Cleveland Ave.

## SPECIAL

### NEW LIVING ROOM SUITES

2-Pc. SUITES (Sofa and One Chair) \$105.00

3-Pc. SUITES (Sofa and Two Chairs) \$139.95

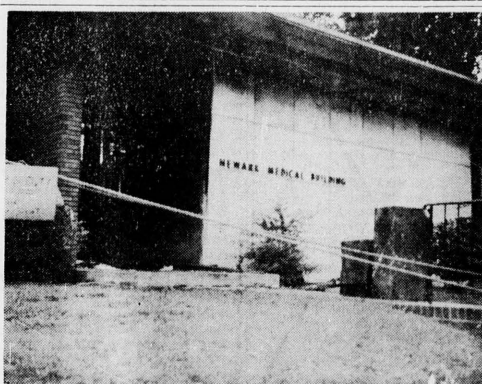
### MILLER'S FURNITURE

Center of Route 40, Glasgow, Del.

## \$5.00 COUPON!

THIS COUPON is WORTH \$5.00

Towards purchase of one, new Living Room Suite



## FIRE!

Fire sirens howled through the dead night last Friday, as towering flames swept through and gutted the Newark Medical Building on West Main Street.

We are forcibly reminded again that properly tailored insurance can mean the difference between inconvenience and disaster.

The Young and Williams organization wishes to extend its sincere sympathy to those who suffered loss through this holocaust.

To help pick up the threads, the firm of Young & Williams has prepared the following list of professional people formerly occupying the burned-out building and their present, if temporary, addresses:

DR. STANLEY GOLEBURN	In National 5&10 Building,
DR. RONALD E. COLLINS	Main Street, Newark
DR. ALLEN H. SEEGER	At Office of Dr. Rublee C. Soule,
DR. RICHARD C. HAYDEN	1364 Marrows Road, Brookside
DR. MORTON KEYSER	
DR. WILLIFORD EPPES	At office of Dr. C. C. Franklin,
	101 Dallah Road, Newark
DR. C. S. PAPASTAVROS	Suite A-14, Professional Building,
	Augustine Cut-off, Wilmington
DR. JOHN S. PIENBAK	Suite A-14, Professional Bldg.,
	Augustine Cut-off, Wilmington
DR. LAWRENCE SILVERMAN	2310 Market Street, Wilmington
DR. JAMES J. GALLAGHER	1003 Delaware Ave., Wilmington
DR. ALLAN J. ALLSTON	Unknown as we go to press
DR. EDWARD KRAVITZ	Unknown as we go to press

NOTE: Newark Physicians Exchange (EN 8-2591) will also be happy to assist you in locating these doctors.

## YOUNG & WILLIAMS

Real Estate & Insurance

95 E. Main St.

Phone EN 8-8538

## Arthur Pfeifer, Jr. Named As Pfizer Representative

H. Arthur Pfeifer, Jr., of Beverly Road, Newark has been appointed a professional service representative for Pfizer laboratories division of Chas. Pfizer & Co., Inc., 112-year-old pharmaceutical and chemical manufacturer.

In his new position, Pfeifer will bring information on the company's new products and research discoveries to physicians, pharmacists and other professional medical groups in the Roanoke (Va.) area.

Mr. Pfeifer, a graduate of the University of Delaware, served two years with the Navy. He is a native of Norristown, Pa.

George K. Harris, Jr., was elected commissioner, and Norman Zeigler, alternate, to represent Red Clay at the New Castle Presbytery meeting at the Calvary United Presbyterian Church on Sept. 12.

Cub Pack 29 will hold a cook-out at Brandywine Springs Park on Sept. 9 at 3 p.m. Charcoal, sodas, and ice cream will be provided.

Sallie Evans is representing this church this weekend at the WCYM summer conference for the Chesapeake area at Camp Arrowhead, Lewes. She will serve as director of music. The camp is sponsored by the Wilmington Council of Churches.

Mr. and Mrs. William H. Martin and daughter of Limestone Acres, are moving today to Norfolk, Va., where Mr. Martin has accepted a position with the Norfolk Development and Construction Company. He was with Du Pont at the Louvers Building.

The Rev. and Mrs. B. Franklin Ferguson of Pageland, S. C., visited relatives and friends in the Mermaid area last Thursday and were dinner guests at the home of Mrs. Emma W. Pennington. Mr. Ferguson is pastor of Beulah, Salem, and Pageland Presbyterian Churches.

The official board and music committee this week approved the appointment of Mrs. Kenneth Knight of Todd Estates as director of the church choir. Formerly of Rising Sun, Md., she has taught in public schools in Cecil County, and has been active in work at James Methodist Church, Rising Sun. Mr. Knight studied music at West Chester State Teacher's College.

The new director will begin her duties tomorrow at 7:30 p.m. when the choir resumes weekly rehearsals.

A rosebud was placed on the altar for the infant daughter of Mr. and Mrs. Edward Williams, born Aug. 18. The baby has been named Naomi.

The Ebenezer Fellowship will begin its fall program next Wednesday at 6:30 p.m. with a covered dish supper served at the home of Mr. and Mrs. Kinsey Whiteman at Newark. Rolls and meat will be provided.

Walter Pennock of Kirkwood Highway, was taken ill last Sunday morning at Ebenezer Church services and was removed to Elkton Hospital.

The Three-in-One Homemaker's Club will hold its September meeting at the Newark New Century Club with senior citizens of Newark as guests on Thursday, Sept. 14.

Charlotte, youngest daughter of Mr. and Mrs. Daniel E. Harris, won two trophies last Saturday at the annual 4-H County Achievement Day at Newark. She received the Delaware Guernsey Breeders' Association trophy for winning the grand championship with her purebred Guernsey cow and the Levy Court trophy for first in the showing of her cow, Sally Pierson of White Oak Club, placed second in the fitting and showing of her Guernsey cow.

Charlotte is a member of the Union 4-H Club. At the club's meeting Saturday night, plans were made for a cook-out at the Sept. 23 meeting with Miss Jones in Parkwood.

Mrs. Ray Kline, Judith and Phyllis Kline of Dayton and Mrs. David Parkinson of Cincinnati, O., spent the past week with Mr. and Mrs.

Daniel E. Harris at Penn Manor Farm.

Mr. and Mrs. J. Walker Pennington attended the annual Glvin family reunion last Saturday at New Holland, Pa.

**Fine Foods - Cocktails**  
**ARSENAL-ON-THE-GREEN**  
New Castle, Del.  
Dinners until 8:30, Fri.-Sat. 'til 10.  
Cocktail Lounge open until Midnight  
BANQUET FACILITIES  
Wedding Receptions  
PHONE EA 8-8734

**Light HAULING**  
Phone WY 4-4088

**GEORGE E. MOLITOR**  
Painting  
Interior - Exterior  
Floor Sanding & Refinishing  
Tiling - Ceramic & Floor  
PHONE ELKTON EX 8-300



## GOOD EYESIGHT HELPS GOOD GRADES

Does YOUR CHILD have the proper glasses?

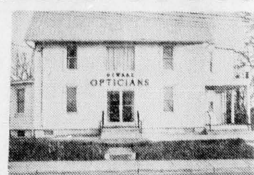
BE SURE AT

## NEWARK OPTICIANS

Bring Your Prescription

or call

ENDicott 8-5579



SAFETY LENSES

Widest Selection of Frames

Directly Across from Newark Shopping Center on Main Street

## NOTICE

### G.D.F. HOURLY PAID EMPLOYEES

Final pay checks will be distributed to employees now on strike on Friday afternoon, September 1 at the plant entrance between 1:00 and 3:00 p.m.

In order for you to secure your final check, you will be required to turn in your badge. To avoid delay in receiving your check, please have your badge with you.

## CONTINENTAL-DIAMOND FIBRE CORP.

Newark, Delaware Plant

Speaking of Money...

## "Eyesight Economics"



by: JOHN BUCHANAN

In many families, it's a regular custom for Mom, Dad, and two or three children to pay for eye examinations every two years, and then pay for glasses, or new prescription lenses. The cost usually runs into three figures, sometimes pretty far into them. Poor eyesight is common... it's expensive... but it is not necessary.

As a father, I've been interested in protecting my children's eyes. So I've done some research on the subject which has led me to some interesting, practical, and money-saving knowledge.

You and I, it seems, are basically cavemen, designed to live outdoors in sunlight. Because we are also intelligent and enterprising, we have converted our caves into split levels, and our dugout canoes into automobiles. But physically, we're still the same as cavemen.

Now when a "caveman" lives his life indoors, he has adjusting to do, because he has left the sunlight behind, and he has formed the habit of reading textbooks, newspapers, and such. The problem comes from the mechanics of the eye.

Reading the printed word means close

focusing. The catch is that close focusing cuts down on the light that the eye can receive, because the pupil of the eye closes to get a sharper image. That's just the mechanics of seeing, but it means that to get enough light through to the sensitive parts of the eye, you must have extra light on the printed word. The caveman had that extra light but we don't.

Here's what you can do about it:

First... Get sufficient light on any area in which you or the children will be reading... and here's a plain fact. It is almost impossible to get too much light. The sun on a clear day throws 1000 measurable units of light in the shade of a large tree, and that's perfect for reading. And yet in the living room of your home, you probably have 40 or 50 such measurable units at most... that is, if you're reading in the light of any lamp lower than 200 watts in output. A 300-watt lamp is excellent for reading, 200 watts will do, but below that comes eye trouble.

Point two for good seeing conditions... Never let the light shine directly into the corners of your child's eyes, or your own. Proper shading is vital.

Speaking for the Wilmington Savings Fund Society Point three... Get rid of all reflected glare... No doing homework on a shiny desk top, or the kitchen table. No bright, high reflection metal doo-dads in sight, either.

Four... Don't let your boy or girl sit under one bright light in a dark room. That's as bad as watching television with other light in the room.

That's all there is to good eyesight economics. The more light... the better. Avoid glare and sharp contrasts. Make sure practices a habit from your child's earliest years, and you can forget about the cost of eyeglasses.

At the Savings Fund our business is to help people save regularly. Why not start a savings program with us and make your Savings Fund, too. Your money will earn interest at the current rate of 3 1/2% on an Special Purpose account. You can open an account with as little as one dollar, with full passbook privileges and office regardless of the one or which you opened your account. You can even comfortably at home and bank by mail, you wish. Won't you drop in soon?

## wilmington savings fund society

OTHER OFFICES: MARKET STREET AT NINTH • UNION STREET AT THIRD, WILMINGTON • 53 EAST MAIN STREET • NEWARK, DELAWARE • 2005 CONCORD PIKE (NEAR MURPHY ROAD), PITTSBURGH, PA.

Listen to John Buchanan "Speaking of Money" each weekday 6:30 to 6:55 p.m.

## Educator Mrs. Ethel Dies At A

Mrs. Ethel M. Hill, taught school in Newark, died Aug. 23. She was a member of the R. T. Post, with her husband, Mr. Hill, the

Surviving are two brothers, Mr. and Mrs. Ferguson of Newark, and Mrs. R. Hill, the wife of Mr. Hill, the

Services were held at the R. T. Post, with interment in the R. T. Post, with her

Gratitude is much expressed of the more than one

Gratitude is much expressed of the more than one

Gratitude is much expressed of the more than one

Gratitude is much expressed of the more than one

Gratitude is much expressed of the more than one

Gratitude is much expressed of the more than one

Gratitude is much expressed of the more than one

Gratitude is much expressed of the more than one

Gratitude is much expressed of the more than one

Gratitude is much expressed of the more than one

Gratitude is much expressed of the more than one

Gratitude is much expressed of the more than one

Gratitude is much expressed of the more than one

Gratitude is much expressed of the more than one



### Educator, Writer Mrs. Ethel Hill, Dies At Age Of 81

Mrs. Ethel M. Hill, 81, a retired teacher in Newark and New Castle counties, died Aug. 23, in the Governor Bacon Health Center after a long illness.

The widow of Wilmer Hill, taught school for 35 years, and was a columnist for the Newark Post, with her writings of local interest.

A member of the DAR, Mrs. Hill lived at 701 Brook Drive, Newark.

Surviving are a son, Donald, of Newark; two brothers, Howard, of Youngstown, O., and Arthur, of Newark; and three sisters, Mrs. R. T. C. and Mrs. R. B. Davis, both of Newark, and Mrs. G. Dayett of Newark. Two grandsons also survive.

Services were held Saturday at the R. T. Jones Funeral Home, with interment in Newark Cemetery.

There is much more than a simple expression of thanks. Action and expression of gratitude than any other.

—Mary Baker Eddy

### Danger Of River Jetties Cited By Safety Council

A chart of the Delaware River and Bay is an essential piece of equipment on any boat venturing out on those bodies of water, the Delaware Safety Council declared yesterday in a warning to the thousands of Delawareans who own or use boats.

The number of boats which run aground on the jetties in the river is shocking, J. James Ashton, manager of the council, declared, pointing out that on a recent weekend three boats piled up on the concrete and steel jetties.

For Rent  
**APARTMENT**  
\$100. a month Adults only

TELEPHONE INDICOT 8-5557  
**grover surratt**  
45 east main street  
newark, delaware

### Alice Gilbertson Dies At Hospital On Newark Visit

Mrs. Alice Gilbertson, 70, died Aug. 23, in the Memorial Hospital. She had been visiting her daughter,

Mrs. Ernest Sutton of 1013 Baylor Drive, Nottingham Green, Newark.

Mrs. Gilbertson, a native of Barre, Conn., lived in Manchester, Conn.

Other survivors are two sons, William S. of Burlington, Vt., Alden of Manchester, and six grandchildren.

Services and interment were in Barre.

### Books of the MUTUAL BUILDING AND LOAN ASSOCIATION

Open for subscription to the  
**EIGHTY-THIRD SERIES**  
BEGINNING WITH THE MONTH OF AUGUST

Shares \$1.00 Per Month Maturity value \$200.00

Office at the Farmers Insurance Agency  
82 East Main Street NEWARK, DELAWARE

Dr. Charles C. Palmer, Pres. Edw. L. Shakespeare, Treas.  
Henry F. Mote, Vice Pres. J. E. Dougherty, Secretary.  
H. L. Yarnall, Asst. Secretary

### Virginia Davidson Killed In Accident Driving On Rt. 40

Mrs. Virginia Horsey Davidson, 41, of Fairwinds, Bear, was killed in a Route 40 accident near North

East, Md., early last Friday.

Mrs. Davidson, who was driving, apparently fell asleep, and the car ran off the left side of the road and struck a bridge abutment. Police said Mrs. Davidson died instantly and was pinned in the wreckage for half an hour.

Dr. Richard Dodson, Cecil County medical examiner who pronounced

ed Mrs. Davidson dead at the scene, said the cause of death was a crushed chest.

A witness driving behind the car told police the auto had been weaving back and forth across the highway for about a mile before the accident occurred.

Mr. Davidson was a secretary at the Tidewater oil refinery.

**Auctioneering**  
HAROLD S. HILL  
Kemblesville, Pa.  
Call Clinton 5-4310

### HOLIDAY INTERNATIONAL TRAVEL AGENCY

1101 LOUVIERS BUILDING

Airline and Steamship Tickets

Cruises and Tours

CALL  
EN 8-9196

Plan now for  
fall and winter  
trips • tours • cruises

### BANK of DELAWARE TRAVEL DEPARTMENT

All business and vacation travel services for you.  
No charge, no one serves you better. Stop in or call.

You need not be a Bank of Delaware customer to use this expert service.

WILMINGTON 2nd Floor 9th & Market OL 6-9911  
NEWARK Newark Shopping Center EN 8-1679  
SEAFORD 300 High St. NA 9-9114

Member F. D. I. C. Federal Reserve System

**ALL ACME MARKETS**  
WILL BE CLOSED MONDAY, LABOR DAY  
OPEN TUESDAY AS USUAL

**THIS COUPON IS WORTH  
100 S&H GREEN STAMPS**

In addition to your regular stamps with an order of \$5.00 or more except cigarettes and Fair Trade items.

NAME \_\_\_\_\_ TOWN \_\_\_\_\_  
ADDRESS \_\_\_\_\_

OFFER EXPIRES SATURDAY—SEPTEMBER 2, 1961  
LIMIT—ONE COUPON PER FAMILY

## FREE BONUS S&H GREEN STAMPS

WITH COUPONS BELOW

<p>2 30 EXTRA BONUS S&amp;H GREEN STAMPS</p> <p>With the purchase of any two pkgs of LANCASTER BRAND LUNCHEON MEATS and this coupon 'til Sat., Sept. 2, 1961.</p> <p>NAME _____ ADDRESS _____</p>	<p>3 30 EXTRA BONUS S&amp;H GREEN STAMPS</p> <p>With the purchase of a 1-lb pkg of LANCASTER BRAND SKINLESS FRANKS and this coupon 'til Sat., Sept. 2, 1961.</p> <p>NAME _____ ADDRESS _____</p>	<p>4 30 EXTRA BONUS S&amp;H GREEN STAMPS</p> <p>With the purchase of two loaves of ACK WHITE or DARK BREAD and this coupon 'til Sat., Sept. 2, 1961.</p> <p>NAME _____ ADDRESS _____</p>	<p>5 30 EXTRA BONUS S&amp;H GREEN STAMPS</p> <p>With the purchase of a 10-lb bag of WHITE POTATOES and this coupon 'til Sat., Sept. 2, 1961.</p> <p>NAME _____ ADDRESS _____</p>	<p>6 30 EXTRA BONUS S&amp;H GREEN STAMPS</p> <p>With the purchase of a dozen of JUICY CALIF. LEMONS and this coupon 'til Sat., Sept. 2, 1961.</p> <p>NAME _____ ADDRESS _____</p>
<p>7 30 EXTRA BONUS S&amp;H GREEN STAMPS</p> <p>With the purchase of a 20-oz pkg of LANCASTER BRAND 8-BALL BEEF STEAKS and this coupon 'til Sat., Sept. 2, 1961.</p> <p>NAME _____ ADDRESS _____</p>	<p>8 30 EXTRA BONUS S&amp;H GREEN STAMPS</p> <p>With the purchase of a 12-oz bag of VIRGINIA LEE POTATO CHIPS and this coupon 'til Sat., Sept. 2, 1961.</p> <p>NAME _____ ADDRESS _____</p>	<p>9 30 EXTRA BONUS S&amp;H GREEN STAMPS</p> <p>With the purchase of a GOLD-N-SNOW LAYER CAKE and this coupon 'til Sat., Sept. 2, 1961.</p> <p>NAME _____ ADDRESS _____</p>	<p>10 30 EXTRA BONUS S&amp;H GREEN STAMPS</p> <p>With the purchase of a 3-lb jar of IDEAL CREAMY PEANUT BUTTER and this coupon 'til Sat., Sept. 2, 1961.</p> <p>NAME _____ ADDRESS _____</p>	<p>11 30 EXTRA BONUS S&amp;H GREEN STAMPS</p> <p>With the purchase of two 12-oz jars of GLENWOOD JELLIES Any Flavor and this coupon 'til Sat., Sept. 2, 1961.</p> <p>NAME _____ ADDRESS _____</p>

Prices Effective thru Sat., Sept. 2, 1961. Quantity rights reserved.

**SIRLOIN STEAKS** lb **79<sup>c</sup>** Reg. Price—99<sup>c</sup> lb Save 20<sup>c</sup> a lb

**BELTSVILLE TURKEYS** 4-9 lbs avg. Reg. Price—49<sup>c</sup> lb Save 14<sup>c</sup> a lb **35<sup>c</sup>**

**FRESH FRYERS** ACME FRESHLY CUT **37<sup>c</sup>** LEGS lb **47<sup>c</sup>** BREASTS lb

**SLICED BACON** FIRESIDE LEAN Reg. Price—59<sup>c</sup> lb Save 10<sup>c</sup> a lb **49<sup>c</sup>** 1-lb pkg

**SKINLESS FRANKS** Reg. Price—95<sup>c</sup> Save 6<sup>c</sup> **2 lb bag 89<sup>c</sup>** Morrell's or Southern Star

**Canned Hams** 3 lb can **\$2.29**

**TENDER RIB STEAKS** lb **65<sup>c</sup>** **LANCASTER BRAND BONELESS BEEF ROAST** lb **79<sup>c</sup>** **TASTY LONGHORN CHEESE** lb **59<sup>c</sup>**

**Lancaster Brand Fully Cooked HAMMS**

Shankless Cut lb **45<sup>c</sup>** Butt Cut lb **55<sup>c</sup>**

**LEAN SMOKED HAMMS**

Shank Cut lb **29<sup>c</sup>** Butt Cut lb **39<sup>c</sup>**

Shank Half lb 39<sup>c</sup> Butt Half lb 49<sup>c</sup> Slices of Ham lb 99<sup>c</sup>

**SPECIAL SALE! -- SUNNYDELL ICE CREAM**

1/2 gal ctn **69<sup>c</sup>** All Flavors

**Summer Juice Sale!**

**IDEAL BRAND APRICOT NECTAR** 46-oz can **39<sup>c</sup>**

**BC, BD, BN or BT BREAKFAST DRINKS** 2 46-oz cans **69<sup>c</sup>**

**ROUND THE CLOCK BL. DRINKS** 3 46-oz cans **93<sup>c</sup>** Grape-Apple, Pineapple-Orange or Apricot-Pineapple

**PUNCHINELLO** Fruit Drink 3 46-oz cans **95<sup>c</sup>**

**HAWAIIAN PUNCH** Red or Yellow 3 46-oz cans **95<sup>c</sup>**

**PICKLES** Ideal or Majestic, Dill or Sour 2 qt jars **65<sup>c</sup>**

**PORK & BEANS** Ideal 2 31-oz cans **39<sup>c</sup>**

**PEACHES** Glenside 4 No 2 1/2 cans **95<sup>c</sup>**

**CAKE MIXES** Jiffy Cake and Frosting Mixes 4 kg **10<sup>c</sup>**

**7 HANDY KITCHEN TOOLS BUILD A COMPLETE SET!**

add a piece each week until set is complete  
Hurry! Complete Your Set

**All Pieces Now On Sale! ONLY 49<sup>c</sup> ea**

**ACME FARM FRESH PRODUCE**

**HONEYDEWS** **49<sup>c</sup>** each Reg. Price 59<sup>c</sup> Save 10<sup>c</sup>

**FANCY CALIF.**

**ORANGES** JUICY CALIF. Reg. Price 49<sup>c</sup> doz Save 10<sup>c</sup> doz **39<sup>c</sup>**

**PEARS** FANCY MOUNTAIN BARTLETT Reg. Price 2 lbs 49<sup>c</sup> Save 14<sup>c</sup> on 2 lbs **2 33<sup>c</sup>**

**IMPORTED PEAT MOSS** 5 cu. ft. bale **\$3.98**

**Sliced Barbeque or Frankfurt ROLLS** pkg of 8 **26<sup>c</sup>** Save 30<sup>c</sup> on HAMBURGER or HOT DOG ROLLS when you buy HEINZ RELISHES Get Details at ACME

**BREAD** Old Fashioned Home Style loaf **29<sup>c</sup>**

**Pound Cakes** Gold, Marble, Walnut each **55<sup>c</sup>**

**Spanish Bar Cks.** each **39<sup>c</sup>**

**O. F. Cinn. Buns** 6 in pkg special **29<sup>c</sup>**

**APPLE PIES** each special **49<sup>c</sup>**

**RYE BREAD** loaf special **19<sup>c</sup>**

**ABOVE PRICES EFFECTIVE AT ALL ACME MARKETS ON THE EASTERN SHORE**

**Help your child in school**

with a new dictionary and atlas designed specifically for young people in grade school

**12 MAGNIFICENT BOOKS**

**The Golden Book Illustrated Dictionary and Golden Book Atlas**

Complete your sets in 12 short weeks  
THE GOLDEN BOOK ILLUSTRATED DIC-BOOK 1 **49<sup>c</sup>**  
TIONARY AND ATLAS are designed to inform, to encourage reading and to create a love of learning... leading your child to better school grades today, to success in high school and college tomorrow, and in the strongly competitive world of his future.

**BUY A BOOK A WEEK**

**VALLEY GOLD LEMONADE** 6-oz cans **59<sup>c</sup>**

**SLICED STRAWBERRIES** Ideal 3 16-oz pkgs **\$1**

**FROZEN GREEN PEAS** Ideal 6 10-oz pkgs **\$1**

**GREEN PEAS** Seabrook Farms 2 10-oz pkgs **45<sup>c</sup>**

**FRENCH GREEN BEANS** Seabrook Farms 2 9-oz pkgs **49<sup>c</sup>**

**CLOROX 2** qt bot **39<sup>c</sup>**



# Social Events

## KINGSWOOD-BROOKSIDE CARD PARTY PLANNED

A card party, sponsored by the Woman's Society of Christian Service of Kingswood-of-Brookside Methodist Church, will be held Tuesday, Sept. 26, in the Fellowship Hall of the church.

Chairmen for the party are Mrs. David C. Farise and Mrs. John P. Seibel.

Tickets are being sold under the supervision of Mrs. John A. Cornwell, and door and table prizes will be awarded.

Dessert will be provided by a committee headed by Mrs. Harry E. Kaley, Jr.

## NEWARK O.E.S. MEETS SEPTEMBER 7

The first fall meeting of Newark Chapter O.E.S. No. 10 meets Thursday evening, Sept. 7, at 8 p.m. in the Masonic Temple, Delaware Avenue.

Mrs. Marie Palmer, Worthy Matron and Mr. Spencer Palmer, Worthy Patron will preside.

## PRICES SLASHED!

Last Call for SUMMER DRESSES

SWIM SUITS

SPORTS THINGS

PEGGY CRONIN

Fashions

MAIN ST. — NEWARK

## Planning Annual Antiques Show



Women of St. Thomas' Episcopal Church, Newark, are planning their 16th annual antiques show to be held Sept. 25-28 in the parish house at 270 South College Avenue.

Discussing plans for the show are Mrs. Alvin B. Roberson, Jr. (left), hostess chairman; Mrs. Robert F. Sparrow, and Mrs. Rublee Soule, dealers co-chairmen, and Mrs. George Wiggins, co-chairman of the show. Twenty-one exhibitors will have booths in the show.

Miss Marie B. Glackin of Baltimore, Md., has been visiting Mr. and Mrs. William Wilson, Kells Avenue.

## Laundercenter

SELF SERVICE

Single and Double Loads

OPEN 24 HOURS A DAY

In Newark at

Elkton & Beverly Roads

## Safety For Young People Stressed For Labor Day

Governor Elbert N. Carvel this week urged all those using the highways through the holiday period to "exercise proper care and caution, particularly when approaching or passing cars or buses, carrying young people, so that every youngster may be safely returned to home and family."

Pointing out that "from now through Labor Day, many young persons will be returning to their homes from camps and other vacation areas, and still other young people will be passing through Delaware enroute to their homes in other states," Governor Carvel stated that "the safe movement of these children is naturally of great concern to all of us."

## Personals

William Thompson Moore, cousin of the bridegroom served as best man at the wedding on Friday, Aug. 25 of Miss Eleanor Reid Byers, and Frederick Enoch Moore. The ceremony took place in Westminster Presbyterian Church, Wilmington. The couple will reside in Newark.

Miss Helga E. Schildowsky, daughter of Otto Schildowsky of Darmstadt, West Germany, was married to Karl-Heinz Schulz of Newport on Saturday in the First Presbyterian Church.

Mr. Schulz is the son of Mr. and Mrs. Wilhelm Schulz of Newport-Gap Pike, Gordy Estates, formerly of Germany.

The Rev. Charles H. Davis performed the ceremony and a reception followed at the future home of the couple on Garrett Road, Todd Estates.

Mrs. Katherine L. Moore of 165 Madison Drive, College Park is recuperating in the Memorial Hospital following an emergency operation for acute appendicitis on Monday.

Mr. Orville L. Richardson and son William Tyler Richardson of Smyrna, Georgia, are guests of Mr. Richardson's mother, Mrs. Orville Little and Mr. Little, Elkton Road.

Miss Evaline Marie Leonetti, a teacher at Holy Angels School and Mr. Louis Gene Alessandrini, Wilmington, were married on Saturday in St. Anthony's R. C. Church, Wilmington.

Mr. and Mrs. Grant Ritchie have returned from a vacation to Yellowstone State National Park and surrounding states and while enroute to Wyoming celebrated their 25th wedding anniversary.

Mary Lou Phillips, daughter of Mr. and Mrs. George Phillips of Claymont, is visiting her grandmother, Mrs. Raymond Phillips, Beverly Road.

Miss Judy Foote of Chester, daughter of Mr. and Mrs. William Foote is visiting her aunts, Mrs. George V. Chalmers and Mrs. Clifton Knotts.

Mr. and Mrs. George Knighton and children Denise, Donna, Karen and Brian of Alexandria, Va., have returned home from a visit to Mr. Knighton's parents, Mr. and Mrs. Isaac Knighton, Choate Street.

## Ashton Makes Safety Plea For Labor Day Weekend

"Make Delaware the exception again—let's have a Labor Day weekend with no fatal accidents and few accidents of any kind!"

That appeal was issued last night by J. James Ashton, manager of the Delaware Safety Council, who pointed out that Delaware has been exceptional in getting through many holiday weekends without a fatal accident on the highways, and has achieved an excellent highway safety record so far this year.

"A similarly outstanding record for safe driving can be achieved over the Labor Day weekend by the continued use of good sense and caution in driving," Ashton advised.

## MUSEUM HOURS

Holiday visiting hours from 12:30 to 5:30 p.m. will be observed at the Zwaanendael Museum in Lewes on Labor Day, Sept. 4.

• Draperies • Cornices

We measure & install Bedsprings Dusters Slip Covers Upholstery Custom Made

Sharrah's 157 E. Main St. ENdcoth 8-3624 Service—Quality—Satisfaction

## LeRoy C. Hill Day Slated With Polo On Sept. 10

The Brandywine Polo Association will sponsor a polo game at Toughkenamon, Pa., on Sunday, Sept. 10, for the benefit of the Camp Barnes fund in memory of the late Capt. LeRoy C. Hill, veteran Newark police officer.

LeRoy C. Hill Day will be observed with a special program at the polo grounds near Kennett Square, and a special ticket sale is being conducted throughout Newark in effort to achieve a large, local turnout.

## Four Choirs To Resume Practice At Brookside

The four choirs of Kingswood-of-Brookside Methodist Church will resume regular Thursday evening practices tonight with the Cherub and Junior Choirs under the direction of Mrs. David C. Farise; the Junior High Choir directed by Mrs. Richard M. Jones; and the Senior Choir under the direction of Mrs. Richard M. Blakeman.

Kingswood-of-Brookside will welcome all children, youths, and adults who wish to participate in this music program.

All work by Evelyn Wright Love PERMANENTS — A Specialty NEWARK BEAUTY SHOP Open Evenings by Appointment (Free Parking in Rear) 20 Academy St. Call EN 8-3373

Esther's Beauty Shoppe conducted by Esther Bottomley 631 W. Chestnut Hill Rd. Phone EN 8-1567

See Our PRE-TEEN DEPT. 50 E. MAIN ST. in NEWARK

## Mrs. Jane Lewis Funeral Services To Be Held Friday

Funeral services will be held this Friday at 2 p.m. for Mrs. Jane Powell Lewis, 83, at Loftland's Funeral Home in Milford.

The Rev. Charles H. Davis of the First Presbyterian Church in Newark will officiate at the funeral service.

Mrs. Lewis, a frequent visitor to Newark, was a member of the Ladies Bible Class of the First Presbyterian Church.

Mrs. George Wood and J. Harvey Dickey of Newark are her cousins.

Mrs. Lewis is survived by two sons, two daughters, 11 grandchildren, and 15 great-grandchildren.

Memorial Hospital Mr. and Mrs. Joseph Olson, 615 Ise Dr., Aug. 16, a daughter.

Mr. and Mrs. Franklin Klair, Windy Hills, Aug. 18, a daughter.

Mr. and Mrs. Frank Softer, 203 Country Club Drive, Aug. 22, a daughter.

Mr. and Mrs. Walter Tucker, 24 New London Rd., Aug. 24, a daughter.

Mr. and Mrs. Dickey Lore, Aug. 27, a daughter.

Wilmington General Hospital

Mr. and Mrs. Joseph Lucas, Churchmans Road, Aug. 21, a son.

Mr. and Mrs. Rancis Ogonowski, 417 Tamara Circle, Aug. 23, a daughter.

Mr. and Mrs. Raymond McCall, Coaches Bridge Rd., Aug. 24, a daughter.

Delaware Hospital

Mr. and Mrs. Milton Graham, 160 Madison Dr., Aug. 22, a daughter.

Mr. and Mrs. George Stoops, 21 New Brook Rd., Aug. 26, a daughter.

EXPERT TV & RADIO SERVICE

Fast — Reliable

Honest

Reasonable Rates

CHRIS' TV SERVICE

261 S. Chapel St. EN 8-0976

BLANCHE MAE EVERETT

SLIP COVERS, DRAPES

A & D UPHOLSTERING

Estimates free or without material

10 CAROLE ROAD

Chestnut Hill Estates

Phone EN 8-0105

## APPRECIATION DAYS

This FRIDAY and SATURDAY ONLY!

ALL RIDES — 5c and 10c

From Opening till Closing — 12:30 to 11 P.M.

NOW THRU MON., SEPT. 4 at 4 p.m. and 10 p.m.

Free Act: The Luvas, Thrilling Aerial Duo!

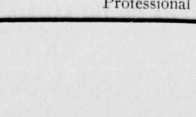
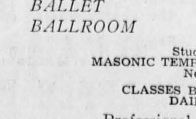
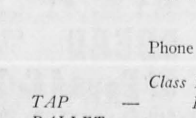
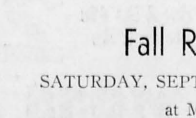
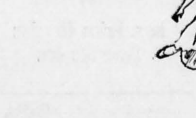
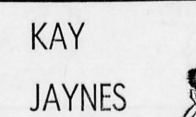
KIDDIES DAY — THIS MONDAY

All Rides 1/2 Price—Child, 12 & Under—1 to 5 p.m.

## RIVERVIEW

AMUSEMENT PARK

Swimming Pool, Picnic Area Rte. 49, Pennsville, N. J.



Broken Lenses Duplicated Latest Style Frames Your Doctor's Prescription Promptly Filled

Newark Shopping Center Phone EN 8-3751

KAY JAYNES



School of Dancing

## Fall Registration

SATURDAY, SEPT. 9, from 1 P.M. to 4 P.M.

at Masonic Hall

Phone Clinton 5-4528

Class Instruction for TAP — BATON — TOE BALLET — ACROBATIC BALLROOM — ADULT BALLET

Studio located at MASONIC TEMPLE, E. DELAWARE AVE. NEWARK, DEL. CLASSES BEGIN SEPT. 16, 1961 DAILY CLASSES

Professional Dancer and Teacher

## BOAT RIDE PLANNED BY SENIOR CITIZENS

The Senior Citizens Club will hold an old timers boat ride Thursday, Sept. 7, leaving the Wilson Line pier at 11:30 a.m.

Any member of the Newark Club needing transportation please call Mrs. Albert Priestley, Mrs. John Singles or Mrs. Charles Elssner not later than Monday, Sept. 4.

## CLASSIFIED

IN MEMORIAM In loving memory of my dear husband, John Jesse Lloyd, who departed this life September 2, 1959. Do not ask me if I miss him. There's such a vacant place. Off I think I hear his footsteps And see his smiling face. Days of sadness still come o'er me. Tears in silence often flow. Though he left me two years ago, And I miss him very much. Deeply loved and sadly missed by his loving wife—Anna O. Lloyd.

Lost POLAROID CAMERA — Gray case, Glen Farms, Aug. 28. Please call EN 8-8855. Reward.

NEWARK LOCKSMITH • Locks Re-Keyed • Keys Made • Locks Changed

Sunday Emergency Service

9-1 Weekdays — 9-5 Sat. Auto Keys made, Locks Repaired Call BILL RASH EN 8-9061 Cooch's Bridge Road, RD-1

WANTED Two Rooms (Furnished or Unfurnished) for a refined executive (middle aged). A Newark resident for 5 yrs. Outstanding references offered, to a qualifying home.

Write P. O. Box 333 NEWARK, DEL.

STATE PARKING Saturday Continuous from 2 p.m. Sunday Eve 8 p.m.

THURS. thru TUES. AUG. 31 — SEPT 5

"Never on Sunday" (Labor Day—Cont. from 2 p.m.) Sat. Shows at 4:54; 7:36; and 9:24 SPECIAL MATINEE, SATURDAY 2 p.m. only

"Tarzan's Greatest Adventure"

WED., THUR. SEPT. 6, 7 Double Feature Program

"Gidget Goes Hawaiian"

7 p.m. only

Also James Stewart

"Two Rode Together"

8:49

WED., THUR. SEPT. 6, 7 Double Feature Program

"Gidget Goes Hawaiian"

7 p.m. only

Also James Stewart

"Two Rode Together"

8:49

WED., THUR. SEPT. 6, 7 Double Feature Program

"Gidget Goes Hawaiian"

7 p.m. only

Also James Stewart

"Two Rode Together"

8:49

WED., THUR. SEPT. 6, 7 Double Feature Program

"Gidget Goes Hawaiian"

7 p.m. only

Also James Stewart

"Two Rode Together"

8:49

WED., THUR. SEPT. 6, 7 Double Feature Program

"Gidget Goes Hawaiian"

7 p.m. only

Also James Stewart

"Two Rode Together"

## Situation Wanted

BABY SITTING By hour or day Also sewing & ironing in my home. EN 8-1285. 8-17-61

PAPER HANGING & PAINTING — Edna E. Trivette, EN 8-7039. 12-31-61

CATERING — Weddings, parties, etc. EN 8-1846. 8-10-61

SOME LAWN & YARD WORK — Call EN 8-1285. 8-17-61

CLERICAL WORK in my home. Typing & billing. EN 8-7524. 8-24-61

BABY SITTING — By the week in my Brookside home. EN 8-9389. 8-31-61

WIDOW — Middle aged, desires work, evenings, afternoons, weekends. What have you to offer? Phone EN 8-7865. 8-31-61

Business Opportunities

A CHANCE TO BECOME THE Rawleigh Dealer in N. New Castle Co. Don't pass up this opportunity. Permanent Great round income. Many earning \$100 weekly & up. Write Rawleigh's Dept., DEB-12-172, Chester, Pa. 19380. 8-31-61

Help Wanted

WATERSIDES OF WAITERS — Apply Deer Park Hotel, EN 8-8592. 4-6-61

MALE SALES CLERK — Hardware & housewares — Permanent. Experience preferred. Write Box 60, Ext. 15, 8-10-61

WOMAN WHO CAN DRIVE — If you would enjoy working 3 or 4 hours a day calling regularly each month on a group of Studio Girl Cosmetic clients on a route to be established in and around Newark, and are willing to make light deliveries, etc., write to Studio Girl Cosmetics, Inc., 1414 Glendale, California. Route will pay up to \$5.00 per hour. 8-17-61

DRIVERS — Male or female. Apply in person, Newark Taxi, 171 E. Main St. EN 8-1285. 8-24-61

EXPERIENCED LADY for fountain pen, ink, and stationery. Write to Rhodes Drug Store, 36 East Main St. EN 8-1285. 8-24-61

WATERSIDES — Experienced. Day shift & night shift. Also part-time 9:30 a.m. to 1:30 p.m. Apply in person. Deluxe Candy Shop, East Main St. EN 8-1285. 8-24-61

SALES LADIES — Part-time openings. Apply Newark Department Store. EN 8-1285. 8-24-61

Wanted

1000 RUGS TO CLEAN — See, E. Adams Co., Rug Cleaners, 407 N. Adams St. Phone Wilmington 01-1535. 8-20-61

SMALL RADIOS — As charity gifts for hospital patients. Call Bill Dyer, EN 8-1891. 8-17-61

Instructions

GUITAR INSTRUCTIONS — Private lessons on modern Spanish, Hawaiian and Hawaiian styles. Also short courses for adults. Phone EN 8-1911. St. Clair McKivier. 12-10-61

For Rent

ROOM & GARAGE — 1013 Nottingham Rd., west of Country Club, dry, clean, modern. 8-1991 or after 5:00 EN 8-4380.

APARTMENT — 158 E. Main St. Adult only. Call EN 8-1285. 8-24-61

WALLPAPER STEAMER — Call Sheaffer's Wallpaper & Paint Store. EN 8-1285. 8-24-61

ROOM — Gentlemen preferred. Rooming house, 1314 Nottingham Road. Phone EN 8-2004 after 5:00 p.m.

HALL — Former Union Meeting Hall, 4 E. Main St. EN 8-1285. 8-24-61

OFFICE SPACE — 64 East Main St. Call Mrs. Nichols. EN 8-1911. 8-24-61

FLOOR SANDERS — Call Sheaffer's Wallpaper & Paint Store. EN 8-1285. 8-24-61

ROOMS — Convenient to University. Reasonable. EN 8-1285. 8-24-61

HOUSE — 4 rooms and bath, Elkton-Newark Road. Apply Mrs. Shaw. Good condition. EN 8-1285. 8-24-61

APARTMENT — 3 rooms, bath, 24 Academy St. Call EN 8-2693. 6-29-61

FOR RENT ELKHART APARTMENTS

Furnished or Unfurnished. One or Two Bedrooms. R. T. Buckles, Mr. Elkton Rd., Newark. PHONE EN 8-2357

UNIVERSITY GARDEN APARTMENTS

Elkton & Beverly Roads Beautiful, spacious 1 and 2 bedrooms, including dinette, electric range, new refrigerator-freezer, redecorated.

\$85 and \$99.50

Supt. H. R. GIBSON ON PREMISES EN 8-3823

BING'S

253 E. Main Street BAKERY — GOURMET FOODS

GRANDMA'S ORANGE CAKE

STRAWBERRY CHIFFON CAKE

BUTTERSCOTCH CONFECTION ROLLS

BLUEBERRY MELODY CAKE

P



## CLASSIFIED

## For Rent

**THE NEWARK POST**  
 Published January 26, 1910, by the late Everett C. Johnson  
 An Independent Newspaper  
 Published Every Thursday by The Newark Post, Inc.  
 14-16 Thompson Lane, Newark, Delaware  
 Locally and Independently Owned and Operated  
 Display advertising rates furnished on request.  
 PUBLISHER  
 AGGAMAN, JR.  
 EDITOR  
 AGGAMAN, JR.  
 Second class matter, March 10, 1910, at the Postoffice at Newark, Delaware, under the Act of March 3, 1879.  
 Newark, Delaware, Thursday, August 31, 1961

## HEALTH AND SAFETY TIPS FROM

## THE AMERICAN MEDICAL ASSOCIATION

Traditional Labor Day weekend is approaching and Americans will head for the parks, beaches, golf courses and the open country.  
 Lower your guard against the blazing sun that still is the most of the nation on this last big out-of-doors day of the season. Some helpful tips on how to beat the heat in a current issue of an American Medical Association publication.

The Labor Day weekend, most of those who will get away have had it, but there is still the chance of suffering from heat exhaustion if there is too much activity under a boiling sun.

Try to eat more lightly, concentrating on salads and avoiding eight-course dinners; to take a morning sponge bath or shower with tepid water (not too hot) to relieve thirst by sucking on a piece of ice; gulping down a tumbler of cold water; by dressing in white cottons are best; to try to get more rest.

Avoid racing your mental motor. This is no weekend to stew about world affairs or your personal problems. Or to become too intense over your duties and the games and sports that go with it. Every official and nonofficial body warns against overexertion on the Labor Day weekend—traffic will be heavy on highways and roads; crowds at the beaches may result in sunburns; heavy intake of liquids and picnic foods may cause gastric upsets; and vigorous sports may produce heat attacks and injuries.

Remember that summer isn't quite over yet and that Labor Day weekend can be a time of relaxation and a change the summer-worn batteries and get ready for the fall activities.

Keep Newark accident and tragedy-free this Labor Day weekend.

8:25; (Second Trip) Pick up north side of Capitol Trail starting at west side of White Clay Creek, loop through Lumbrook; south side Capitol Trail.

17B—Country Club Drive and New London Road at 8:30. Bus will make additional stops before reaching Cleveland Avenue.

10B—Wedgewood Road at 8:15 north to 896 to State Line, return on 896; stop at Fremont, through Country Club Drive.

25B—Cleveland Avenue and North College at 8:35; stopping at Wilbur, Kershaw and Chapel streets.

18B—Harmony Hills at 8:25 at Elsworth Drive, goes up Hill Drive, turns left on Durso, circles out to Edgeworth and to Medill.

## West Park Place School

5B—Sunset Lake Road near Route 40 at 8:25; Sunset Lake Road; Burns Garage; to Chestnut Hill Road west of Brookside; to 896.

6B—Dairy Queen, 8:25; Route 896 to Twin Lane Farm; Cooch's Bridge; Cooch's Bridge Road to 896.

7B—Pleasant Valley Road near Route 40 at 8:20; to Pleasant Valley School; Old Post Road to 896.

8B—Maple Square Trailer Camp at 8:20; Dixie Line Road; to Pleasant Valley School; to Baptist Church Road; to 896.

9B—City Line on Barksdale Road at 8:25 to Valley Road and through Christine Manor and Nottingham Road picking up children living in city limits from Casho Mill Road to Radcliffe Drive.

14B—Barksdale Road west of B&O overpass at 8:20 Cherry Lane; Elkton Road; Ott's Chapel Road; Chestnut Hill Road to 896.

19B—Silverbrook at 8:30; Silverbrook and Rt. 896 to PRR.

Eden School

El—Glasgow at 8:10; to State

Line; Glasgow Heights; portion of Pleasant Valley Road near Route 40 will meet bus at Route 40; 896 south of Glasgow.

E2—Route 40 West of Salem Church Road at 8:10; to first cross-over west of Glasgow; Briggs Trailer Camp; Wrangle Hill to Porter Road, cross Wrangle Hill to Porter Station to Walker's Store (Route 40).

21B—Route 40 west of Glendale at 8:10; Wrangle Hill Road; Porter Station; Salem Church Road.

20B—Bear at 8:20; Glendale and portion of Route 40.

## Jennie E. Smith School

23B—(First Trip) Chestnut Hill Estates at 7:55; Bala Road; Radnor Road; Malvina Lane; Augusta Drive and part of East Stephen Drive.

(Second Trip) Chestnut Hill Estates at 8:15; Part of Augusta Drive, Malvern, Merion, Davies roads plus East Stephen Drive south of Bala Road.

Christiana Elementary School

22B—Old Baltimore Pike east of Ford Implement Garage at 7:55; to Salem Church Road; south on Salem Church Road to Fox residence; return to Old Baltimore Pike to Smalley's Dam Mill Road; to Route 7 towards Eden; return to Christiana via Route 7, picking up on Hare's

Christian Science Services  
 Sunday School—Nursery  
 In Newark, Sundays, 11 A.M.  
 also  
 TESTIMONIAL MEETINGS  
 Every Wednesday  
 at 8 P.M.  
 NEW CENTURY CLUB  
 141 E. Delaware Ave.  
 — ALL ARE WELCOME —

When the need is greatest.



## Don't lose a day going in... don't waste a day getting out

One of the best things about your Blue Cross and Blue Shield membership is that you needn't put off getting fine hospital care for fear of the expense.

When you know you have to go into the hospital, it's wise to go as soon as you can. The sooner you get in, the sooner you'll get well. And, when you're well, leave as soon as your doctor says you can. Don't waste a single benefit-day you may need during another illness. And, of course, leaving promptly helps keep your Blue Cross and Blue Shield dues rate down, because as a non-profit organization, Blue Cross and Blue Shield dues reflect only the actual cost of payments to hospitals and physicians, less the amount necessary to administer the plan, and anticipate emergency needs through a reserve fund.

**Group Hospital Service, Inc.**  
 Delaware Blue Cross and Blue Shield  
 908 West Street, Wilmington • Olympia 8-2441  
 Dover RE 6-6431 • Milford GA 2-9570 • Seaford NA 9-9465

## Bus Routes

(Continued from Page 1)

## Medill Elementary School

1B—Corner Ketch at 8:15; Pleasant Hills; Thompson Road; Thompson Bridge; to Possum Park Road; to Capitol Trail.

2B—Paper Mill Road at White Clay Creek at 8:15; Paper Mill Road; Fairview; Ebenezer; Rankin Road; Pike Creek; Capitol Trail.

3B—White Clay Church 8:15; Polly Drummond; Pike Creek.

4B—(First Trip) Tamara Road in Harmony Hills at 8:25; turns up Catalina Drive to East Durso Drive, circles Durso Drive to Harmony Road, picks up to Medill ... (Second Trip) Loops through Newkirk beginning at 8:40.

15B—Ruthby-Red Mill Road north of PRR at 8:25; Red Mill Road; Roseville Park and Delaplane Manor.

16B—(First Trip) Windy Hills

IN THE SUPERIOR COURT OF THE STATE OF DELAWARE IN AND FOR NEW CASTLE COUNTY

In the matter of WILLIAM EUGENE CAIN, a Minor.  
 PETITION FOR CHANGE OF NAME

JEAN C. RUSSELL, mother of William Eugene Cain, respectfully represents: 1. William Eugene Cain, minor, born September 30, 1957, is the son of the said Jean C. Russell, and is a resident of the City of Wilmington, County of New Castle and State of Delaware.

2. For social reasons in the interest of the said William Eugene Cain, it is desired to change the surname of the said minor from Cain to Russell.

WHEREFORE, your petitioner prays in behalf of the said minor that the Honorable Court may enter an order changing the said minor's name from William Eugene Cain to William Eugene Russell pursuant to the provisions of the Act of the General Assembly in such cases made and provided. And your petitioner will ever pray, etc.

JEAN C. RUSSELL, Parent of William Eugene Cain  
 By David B. Cox, Jr., Attorney for Petitioner,  
 908 Bank of Delaware Building  
 Wilmington, Delaware  
 Aug. 31; Sept. 7-14

## REAL ESTATE FOR SALE

11 Knickerbocker Drive—Executive Rancher, Brookside. 2-car carport; h.w. heat; cor. lot. Aluminum storm doors and windows. (SOLD)

605 Apple Road—Story and one-half, Br. & Fr. 3-BR, LR, DR, Kitchen.

Jackson Hall Road—Ranch on large country lot in Christine Manor.

12 Connell Circle—4-BR, living rm. dining rm. kitchen (SOLD)

200 Murray Road—3-BR Ranch near shopping center, schools

201 Sypherd Drive—3-BR, equipped kitchen, den, playroom, 2-car garage.

715 Academy Street—3-BR, Den, LR, DR, Kitchen & garage.

11 Wedgewood Road—3 lg bedroom, 2 baths, lovely view.

524 Tamara Circle—3 Br., rec. rm. & basement. \$12,900

38 O'Daniel Ave.—3 Br., Den, Rec. room in basement. \$14,900

222 Cheltenham Rd.—Air conditioned split level. 7-rooms, 2½ baths, garage, wooded lot 100x125-ft. Owner transferred.



724 Brook Dr.—2-Story Brick Colonial. 3 Br. living room, dining room, kitchen. Lovely wooded lot with stream.

SOLD DURING PAST 8 MOS. \$648,000.00 WORTH OF REAL PROPERTY

**Hugh F. Gallagher, Jr., Inc.**  
 74 East Main St. — Phone EN 8-8758

## Christian and Missionary Alliance Church of Newark

Meeting in Red Men's Hall on Benny Street

Sunday School 9:45; Morning Worship 10:45

Evangelistic Service — 7:30

Rev. Blair H. Kline, pastor

Cottage Prayer Meeting, Wed., 7:45 p.m.

If interested, Call EN 8-4854

## Wesley Mennonite Chapel

Route 896 N.W. of Newark, Del.

SUNDAY SCHOOL—10 a.m. MORNING WORSHIP—11 a.m.

EVENING SERVICES—First Sunday of each month — 7:30 p.m.

Pastor Herman N. Glick, Atglen, Pa.

Phone LY 3-5757

STARTS TODAY! THE YEAR'S BIGGEST AND MOST EXCITING SALES EVENT AT THE GIANT

## NEWARK SHOPPING CENTER



## 6th ANNIVERSARY

**EIGHT BIG DAYS!**  
 AND JUST LOOK AT THE BIG PRIZE!  
**FREE COUPONS**  
 available now in each of the Newark Shopping Center stores listed in this ad and at the sample homes in lovely FAIRFIELD CREST!  
 Nothing to buy... just sign up now... winner will be announced on Saturday, Sept. 9!

It's celebration time again... and this promises to be the most value-packed Anniversary Sale we've ever had! In the past, we've shown our appreciation of your patronage in many ways... but this year tops 'em all with the best "thank you gift" of all! This year, you can

## WIN \$900 TOWARD DOWN PAYMENT ON A HOME AT FAIRFIELD CREST!

(OR YOUR CHOICE OF \$250.00 IN CASH)

TAKE A LOOK AT THESE SPECIAL ANNIVERSARY SAVINGS AT AMERICA'S FAVORITE STORES!

1000 SACCHARINE TABLETS 33¢  
 full 1/4 grain..

## SUN RAY DRUGS

Plan now for your Fall and Winter Cruises through

## BANK OF DELAWARE TRAVEL DEPARTMENT

RCA COLOR TV 21-inch MODELS  
 now from only \$495

## SCOTT &amp; HALL Appliances

All Seasonal SPORTING GOODS, Baseball - Tennis - Sleeping Bags  
**1/3 OFF**

## KEENE HARDWARE

ASK FOR YOUR FAVORITE BEVERAGES AT CRICHTON'S BEVERAGES

## S-K SOCKET SET

3/8 Drive 20-PC. #4520 \$1950

## CENTER AUTO STORE

## BACK-TO-SCHOOL SAVINGS NOW!

Shop the entire store — everything from wearing apparel to rubber erasers!

## F. W. WOOLWORTH

## CHRISTMAS CARDS

25% OFF

Now thru Sept. 30

## MONTGOMERY—WARD

## Berkshire Stocking Sale!

Reg. 1.35 ..NOW \$1.09 3/\$3.19

Reg. 1.50 ..NOW \$1.19 3/\$3.49

Reg. \$1.69 ..NOW \$1.29 3/\$3.79

## NEWARK DEPT. STORE

Luxury Fabric Man- TAILED BLOUSES  
 reg. \$3.98 \$1.99

## TERRY SHOPS

FULL POWER VACUUM CLEANER  
 Reg. \$49.50 \$3950

## SINGER SEWING CENTER

## SEPTEMBER SALE!

Damask Rose Pattern

## STERLING SILVER

25% OFF!

## MINSTER'S

PRO SHOP SPECIAL! FREE LOCKER RENTAL for one year, with the purchase of a new bowling ball!

## BLUE HEN LANES

## FREE! S&amp;H GREEN STAMPS

with every purchase when you shop at

## ACME MARKETS

DON'T WAIT... IT STARTS TODAY! Shop early and save often... bring your family, friends and neighbors and remember to ask for your Anniversary.

## FREE COUPONS

at each of the Center stores listed above and in the smart new sample homes at lovely

## FAIRFIELD CREST

(located on New London Road—across from Fairfield and the Newark Country Club—built by Eugene Delle Donne)

ALL COUPONS MUST BE DEPOSITED AT CENTER STORES BY 5 P.M. SATURDAY, SEPTEMBER 9! Employees (and their families) of the Newark Shopping Center and Fairfield Construction Company are not eligible! WINNER WILL BE ANNOUNCED DECEMBER 9!

## NEWARK SHOPPING CENTER

OVER 14 ACRES OF FREE, PROTECTED PARKING IN THE HEART OF DOWNTOWN NEWARK!



WIN \$900 toward DOWN PAYMENT ON THE KENT—here's all the charm and lasting loveliness of rich architecture... three big bedrooms with living room, dining room, kitchen, family room, garage and basement... and the KENT features FULL CENTRAL AIR-CONDITIONING!



WIN \$900 toward DOWN PAYMENT ON THE RIVIERA—another handsome 3 bedroom home at Fairfield Crest—the delightful home community conceived and built by Eugene Delle Donne. Visit Fairfield Crest and see for yourself... on New London Road—across from Fairfield and the Newark Country Club.



WIN \$900 toward DOWN PAYMENT on the SUSSEX—here's a 4-bedroom beauty that will capture your heart... big inside and outside with a real honey of a floor plan... full basement and full depth garage.



WIN \$900 toward DOWN PAYMENT on our NEW CAPE COD—so new it hasn't been named. Featuring 3 or 4 big bedrooms... you can see this brand new model nearing completion now at Fairfield Crest... bound to be a prize winner!



## Wells, Subach Score As Carney, Frank, Mowll Star In Line For Gold's Victory

By Jack Hummel  
Superiority in the line anchored by Newark horses Don Frank, Art Carney, and Bill Mowll; the flashy all-around play of Halfback Lloyd Wells before leaving with an injury in the second quarter; and the full-back performance of Frank Subach, spelled the difference in the Golds' first victory over the Blues 20-14, in the sixth annual Delaware Stadium last Saturday.

Although Taze Proffitt's brilliant passing and leadership, and Ronnie Bianco's outstanding blocking and tackling won them the individual awards, it took five Newark starters to bring home a winner.

How much Coach Bob Andrus was counting on Wells was shown by the fact that he carried the ball eight times for 43 yards before pulling a leg muscle in the second quarter. Besides maintain-

ing a five-yard-plus rushing average, Lloyd, the state scoring champion, scored a touchdown on a 57-yard pass-play and intercepted an enemy pass to win second place in the "Outstanding Player" poll just one vote behind Proffitt.

On offense, Mowll and Carney pulled out beautifully to lead the plays, while Frank and Bianco opened the holes from their tackle positions.

Carney and Frank also anchored the left side of a solid 6-2-2-1 defense that limited All-Stars Jimmy Luciano and Buddy Hailey to six net yards and the entire team to 42.

Wells combined with Dover's Mike Malone to do all the ball-carrying in the Golds' first touchdown drive, with Malone going over from four yards out after 11:32 of the first quarter.

Carney, a 195-pound, 6-0 guard who is planning to enter the University of Maryland, added the extra point for a 7-0 lead.

The Blues fought back to take an 8-7 advantage on a 26-yard pass and a two-point conversion early in the second quarter.

Wells brought the crowd to its feet when he went out to the left from his halfback post, cut back across the secondary, and took a 17-yard pass from Proffitt before romping 40 yards for the score. After a scoreless third quarter, the Golds received a break late in the game when a 32-yard pass by Proffitt bounced off of two defenders and into the hands of Georgetown's Jerry Weller.

Newark's Frank Subach bulled over from the two to score what proved to be the winning touchdown, as the Blues added a score before the game ended.

### Boulden Bros. Fuel Kids



YOUR heating problems are a thing of the past when our fine Fuel Oil goes to work for you. Order your Winter supply today!



### hi-neighbor

by Gibby Young

14-KARAT

And the Gold All-Stars were all of that as Coach Bob Andrus' Southerners won the annual Delaware All-Star High School Football Game after a brilliant first half, with a leg injury—Frank Subach, Art Carney, Don Frank, and Bill Mowll. Well done!

Congratulations to each member of both squads, but particularly to Taze Proffitt of William Penn as the "outstanding player," and to Ron Bianco of Conrad as "outstanding lineman," and to Newark's Gold All-Stars Lloyd Wells, sidelined after a brilliant first half, with a leg injury—Frank Subach, Art Carney, Don Frank, and Bill Mowll. Well done!

Young & Williams Realtors—Insurance 95 East Main Street NEWARK, DELAWARE Phone ENdicott 8-8538

THURSDAY — SATURDAY AUGUST 31 — SEPT. 2

**Jerry Lewis**  
His funniest, biggest ever! as **Ladies Man??**  
A Paramount Picture Technicolor

and **Tony Curtis in: "THE GREAT IMPOSTER"**  
SUN. THRU WED. SEPTEMBER 3 — 6

**ROCK HUDSON · KIRK DOUGLAS**  
**THE LAST SUNSET**  
in Eastman COLOR

and **CLARK GABLE SOPHIA LOREN VITTORIO DESICA**  
**IT STARTED IN NAPLES**



Casting plugs off the West Coast of Florida in the great clarity of a salt water bay between the mainland and one of a chain of islets that form a barrier reef with the deep green Gulf of Mexico to the west, Paul Musselman recently experienced some of the most pleasant, exciting fishing in the world, while vacationing near Clearwater.

"Speckled sea trout and redfish," Dr. Musselman mused in nostalgic reminiscence, "caught every morning, early, before and for breakfast, from the bay just in front of our cottage."

The speckled sea trout are spotted weakfish, and the Florida redfish is a channel bass, the red-gold, spotted bronze warrior of Duck Stewart's Carolina Ocracoke surf and both magnificent fish and both occasionally caught off the Delaware coast.

But catching these fish in Florida is something extra special. In water that is both clear and shallow, trout and redfish, over the grass beds interspersed with white sand spots, and they hit a plug just as a large-mouthed black bass will respond to a spin or bait cast in fresh water when things are right. And of course, things have to be right in salt water, too, for sure response. Doc Musselman hit things just right during his vacation, and the fish were there and hitting.

It's been too, too long since we experienced any of this kind of fishing, but the memory is vivid. The fish can be seen streaking through the shallows as they charge a plug, and with little room to go down, they take in the air instead in a thrilling surface struggle seldom seen by the deep water angler.

And along with the speckled trout and channel bass, are blue runners, Spanish mackerel, bluefish, and ladyfish—the gamest of them all.

**CALL EN 8-9811**  
For **AUTO SERVICE**  
BATTERY  
LUBRICATION  
WAXING  
TUNE-UP  
BRAKES  
Whitman Prop.

UNIVERSITY ESSO SERVICENTER  
Elkton & Beverly Roads

**BRIGHTEN YOUR NIGHTS**  
Brandywine Raceway is all new this year... bigger, brighter, more comfortable than ever! Enjoy colorful harness racing, superb dining. Racing nightly through September 14. Post time 8:25 P.M. .... Daily Double closes 8:15 P.M. Dining reservations Olympia 2-1414.

**BRANDYWINE RACEWAY**  
Bus service directly to track. PHILADELPHIA: 13th & Filbert Streets 6:30 P.M., Broad & Snyder Ave. 6:40 P.M., 69th St. Terminal 6:45 P.M. CAMDEN: Parkway Building 6:40 P.M., Fairview Bus Terminal 6:45 P.M. WILMINGTON: Bus Terminal 6:00 P.M.—7:45 P.M.

# THE NEWARK POST

Six

The Newark Post, Newark, Delaware, Thursday, August 31, 1961

## Grossman Elected Blue Hen Captain For '61 Gridders

### Junior Tackle To Succeed Heinicke As Hen Captain For 1961 Football Season

Bill Grossman, junior tackle from Palmyra, N. J., has been elected captain of the Fighin' Blue Hen football team at the University of Delaware for 1961.

David M. Nelson, director of athletics and head football coach, said the selection was made by the players and approved by the university's athletic council.

Grossman was considered the Blue Hen's most improved lineman during the past campaign. He moved from second level guard to tackle early in the year, and then was elevated to a starting position midway through the season when injuries depleted the Hen ranks.

His defensive work helped with victories over Hofstra and Temple and a tie with Marshall as Delaware completed the season with a 2-6-1 record. It was Nelson's first losing season in 10 years at Newark.

Nelson said Grossman, a "spirited and aggressive competitor," will instill a winning attitude in his teammates who suffered through a year of inexperience, bad breaks and injuries in 1960.

Grossman is the 10th successive lineman to serve as Blue Hen captain. He succeeds End Mickey Heinicke, of Philadelphia, Delaware's leading pass receiver in 1960.

Line Coach Mike Lude said Grossman—hardly noticed as a sophomore—began to show promise in spring drills and in the fall of 1960. Lude said he improved through his own determination and desire to play, and calls him now "one of the Blue Hen's fastest and hardest-hitting linemen."

At 5-11 and 204 pounds, Grossman is the 21-year-old son of Mr. and Mrs. William E. Grossman, Forkland Road, and a graduate of Camden Catholic High School.

He is a business administration major and has ambitions to be a marine aviator.

## Mitchell To Face Jim Dolan In NCC President's Cup

Fred Mitchell and Jim Dolan are finalists in the Newark Country Club President's Cup Golf Tournament.

Mitchell defeated Art Mathews 7-6 last weekend. Dolan, a medalist, earlier gained the title round by conquering Sank Richards 2-1.

The championship match will be played this Saturday at 10 a.m. The fourth flight title was won by Earl Riley edging Bill Baillie, 1-up over 19 holes.

Bob Stewart, Jr., and Parker Watson are finalists in the first flight, and Gene Brasher and Jack McCambridge in the second.

Bob Andrus will meet the winner of the Jim Rose-Dan Backman match for the third flight title.

A two-foot length of silver spangled ladyfish can almost outjump John Thomas, and one of the most unbelievable, spectacular sights in sportsfishing is to witness a two-pound, silver shaft of ladyfish burst through the surface and rocket some six-feet clear of the water.

Bill Burton, outdoor editor of the Baltimore Sun, reports that the annual Ocean City Marlin Club Tournament will be conducted out of Maryland's marlin center, Sept. 4-9. For details, contact the Ocean City Marlin Club, Box 213, Ocean City, Md.

And speaking of Ocean City, a quintet of Newark sportsmen found big bluefish off the Maryland port in a recent voyage on the Atlantic with Capt. Hoss Hatter aboard his "Ceil B."

George Cleaver Price, Woodrow Beck, Henry Beaman, Ernie Lindell, and John Smith of Newark tangled with big, burly bluefish in some thrilling trolling, boating 35 blues from two to six pounds.

## In Memory of Olympic Champ Jack Kelly



Atlantic City, N. J. — The \$40,000 added Kelly-Olympic Handicap at the Atlantic City Race Course on Saturday honors the memory of the late John B. "Jack" Kelly, Olympic champion and first president of the resort track. Phillip J. Baker, track general manager, inspects the memorial plaque at the clubhouse track entrance.

## Newark TD Club Trophy Awarded To Ron Bianco

Ron Bianco, towering tackle from Conrad High School, and a tower of defense and offense for the victorious Golds in their victory last Saturday over the Blue All-Stars, was selected by the coaches as the game's outstanding lineman to win the Newark Touchdown Club trophy, presented by J. Francis Neide, club president.

Quarterback Taze Proffitt of William Penn, who piloted the Golds to their first win in the six-game series, was voted the "outstanding player" of the game in a press box poll.

**CENTER Barber Shop**  
JACK VINTEM Prop.  
SPECIAL Haircuts Boys up to 14 \$1.00 Mon. thru Thur.  
Newark Shopping Center

**AVOID TROUBLE**  
ELECTRICAL SERVICE  
House Wiring Commercial Pole Line Work Guaranteed  
C. T. "Pete" CROSSAN EN 8-0022

## Tom Nugent Invites 61 To Maryland Grid Drills

Tom Nugent, University of Maryland head football coach, has invited 61 varsity grid candidates to report for practice this Friday.

The effervescent Nugent, ready to embark on his third year at Maryland with what he calls his best "Terrapin team yet," wrote to his 1961 squad, "We have what could be the best schedule a Maryland team has had in a long time and one that features the five most attractive games to be played in Byrd Stadium since the stadium's first season, 1950."

**NEWARK PHARMACY**  
171 E. MAIN ST.  
**SERVICE**

**45 1/2 Acres**  
1 1/2 Miles from Newark  
on Elk Mills Road, directly opposite Meadowview Development —in Cecil County, Maryland.  
Level, Fertile Farm Land with Stream  
HOUSE—3 bedrooms, bath, living room, kitchen; large attached utility room and two attached garages. Electricity and good water.  
OUTBUILDINGS—24x60 concrete block shed with large, sliding doors, can easily be converted for any purpose.  
Large cow barn with stanchions—some wood, some metal; Jamesway and two large hay mows; also corn crib, tack room and grain storage space.  
Two Box-Stall Horse Barn with extra space for saddling, grooming, etc. with attached open-front shed and 3/4 acre paddock enclosed by rail fence.  
About 6 Acres of Woods  
See  
**Any Broker**  
or contact The Newark Post, Inc., Owner, at 14 Thompson Lane, Newark, Delaware. Phone ENdicott 8-1691

**tastee-freez store**  
stop at the sign of wholesome hospitality  
121 ELKTON ROAD  
Now Featuring...  
**19c Hamburgers & Hot Dogs**  
in addition to delicious TASTEE-FREEZ Regulars  
Open Daily from 11 a.m.

**low cost gas heating for your home!**  
COOL AIR  
WARM AIR  
Perfect for REPLACEMENT Ideal for NEW CONSTRUCTION  
\$139.95  
**CECILGAS CO.**  
Metered Bottled Gases  
We Install Underground Tanks  
Call EN 6-8621 115 E. Main St., Elkton

**Empire DIRECT VENT**  
heating systems  
NEEDS NO CHIMNEY  
...NO DUCTS!  
All Empire Direct Vent heating units come with all parts ready for easy, quick and economical installation. There's a model for every need...from 10,000 BTU to 70,000 BTU. See them today.

## Ed Richtelli Tops Field To Qualify For U. S. Amateur

Ed Richtelli, Newark Country Club golf champion, fired a one-under-par 70 last Tuesday afternoon round at Wayne, Pa., to qualify for the U. S. Amateur Golf Tournament.

Richtelli's sub-par round at St. David's C. C. came after he had shot an 80 in the morning. His 150 total gave him second place among the five area qualifiers.

Brilliant putting in the afternoon helped Richtelli to cancel five bogies with five birds. His 70 was the best round of the day.

The Amateur will be held at Pebble Beach, Calif., next month.

## Fair Hill Races At du Pont Estate Slated Sept. 9, 16

The annual Fair Hill race meet will be held on two successive Saturdays—Sept. 9 and 16, on the estate of William du Pont, Jr., near Newark.

As in the past there will be six races on each of the two Saturdays, and post time again will be 3 p.m.

Proceeds from the races benefit the Union Hospital, Elkton, Md. Pari-mutuel betting will prevail, and veteran Delaware Park mutuels manager E. I. (Jim) Langford will be in charge of the machines. The daily double will be on the first two races.

Other Delaware Park personnel collaborating with Mr. du Pont are Bryan Field, general manager; Helen Stairwalt, his assistant; and Clarke Pardee, track superintendent.

Mildred E. M. Pike, secretary of the Cecil County Breeders' Fair, under whose general auspices the two days of sport are conducted, has available both box and seat reservations at 101 Delaware Trust Building, Wilmington.

In addition to the horse races in the afternoons, there will be a cattle show on the morning of the 9th, and a horse show on the morning of the 16th.

Patricia du Pont of Elkton, again will be active in the horse show, especially the pony and rodeo classes which have proved so popular with the younger set.

## Nine Teams Of Six States Vie In Bidding Polo Play

Nine teams from six states are competing in the fourth annual Gerald Bolding Memorial eight-goal Tournament at Brandywine Polo Club at Toughkenamon, Pa., and running concurrently with the Bolding is the Tar Baby Plate consolation tourney.

Semi-finals of the Bolding are slated for 2 and 4:30 p.m. this Friday at the DuPont Airport near Wilmington, and the finale will be played at Brandywine on Labor Day at 3 p.m.

## Dave Nelson Invites 55 Grid Candidates For Blue Hen Drills Beginning Tomorrow

David M. Nelson, head football coach at the University of Delaware, has invited 55 candidates to report for fall drills beginning tomorrow.

Included in the group are 19 lettermen, the largest contingent since the 1959 Lambert Cup and Middle Atlantic Conference championship team. Last year, the Blue Hens, short on depth and experience, compiled a 2-6-1 log, the first losing season for Nelson in 10 years at Delaware.

The Admiral is pinning hopes for improvement on the development of 18 sophomores, described as "the best crop in years." Last year's freshman team swept undefeated through a five-game schedule.

Principal concern for Nelson is the development of a quarterback. Leading candidates are Ted Kempinski, of Wilmington, who shone late last season; Joe Slobojan, of Glenview, Pa., a converted halfback, and Gary Herbert, of Needham, Mass., who was the No. 1 signal-caller through much of the 1960 campaign.

Newark's Luke Lackman, a junior, and a former Yellowjacket star, is a candidate for the quarterbacking spot. Lackman, 19, is 6-0 and weighs 180.

The Hens also are banking on the return of Dick Broadbent regarded one of the top offensive end prospects in Delaware grid history. Broadbent, 6-3 and a 214 pounder from Wilmington, sat out the '60 season after suffering a knee injury in pre-season drills.

Nelson has indicated that three sophomores could start the opening game against Lehigh at Delaware Stadium on Sept. 9.

Backs John Wallace, of Philadelphia, and Vic Niemi, of Lancaster, Pa., will face the two new sophomores in the first game.

In addition to five Blue Hen Conference opponents, Rutgers and Bucknell will face the two new sophomores in the second game.

LADIES DAY CLUB  
Ruth Bacon was the hostess at the Ladies Day handicap at the Newark Country Club on Tuesday, and Mary McLaughlin, of Wilmington, won the 18-hole tournament, women's man Florence Kerran, of Newark, was runner-up.

The Hens also are banking on the return of Dick Broadbent regarded one of the top offensive end prospects in Delaware grid history. Broadbent, 6-3 and a 214 pounder from Wilmington, sat out the '60 season after suffering a knee injury in pre-season drills.

Nelson has indicated that three sophomores could start the opening game against Lehigh at Delaware Stadium on Sept. 9.

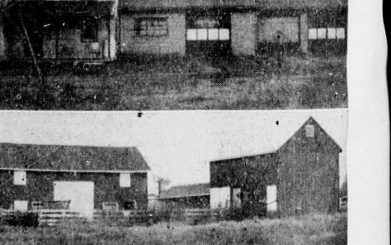
## QUALITY

TRY US FIRST FOR ALL FIRST AIDS WE'RE IN BUSINESS FOR YOUR HEALTH CALL EN 8-8730

When it comes to health aids and medicine cabinet supplies, you can buy here with the utmost confidence. Our professional interest in your health assures your satisfaction.

**FRANK TOLOMEO**  
**NEWARK PHARMACY**  
171 E. MAIN ST.

## SERVICE



**45 1/2 Acres**  
1 1/2 Miles from Newark  
on Elk Mills Road, directly opposite Meadowview Development —in Cecil County, Maryland.  
Level, Fertile Farm Land with Stream  
HOUSE—3 bedrooms, bath, living room, kitchen; large attached utility room and two attached garages. Electricity and good water.  
OUTBUILDINGS—24x60 concrete block shed with large, sliding doors, can easily be converted for any purpose.  
Large cow barn with stanchions—some wood, some metal; Jamesway and two large hay mows; also corn crib, tack room and grain storage space.  
Two Box-Stall Horse Barn with extra space for saddling, grooming, etc. with attached open-front shed and 3/4 acre paddock enclosed by rail fence.  
About 6 Acres of Woods  
See  
**Any Broker**  
or contact The Newark Post, Inc., Owner, at 14 Thompson Lane, Newark, Delaware. Phone ENdicott 8-1691

**NE**  
Theft, Liability & Damage in  
Homeowners!  
nationwide's dra  
new Homeowner  
One policy, on  
any, one agen  
all your insuranc  
And, dependin  
save you live, sav  
as high as 40%  
paying separate cov  
Get rates toda  
home, Call:  
**JARMON**  
Ave. EN 8-  
or  
**N. W. SLAC**  
EN 8-5288  
**TIONWIE**  
NEWARK INSURANCE CO.  
NEWARK, DELAWARE



## Christiana Calling

Sylvia P. Jones, Correspondent  
Phone: EA 8-7413

New students who will enter the Christiana-Salem School next week, both first-graders and transfers from other schools, should be registered before Sept. 7, the first day of school. This may be done at the school office, weekdays from 9 to noon, and 1 to 4 p.m.

Because of increased enrollment

CITY OF NEWARK

Public Hearing

Sept. 12, 1961 - 8:00 P.M.

Pursuant to Section 17 of the City Charter, Notice is hereby given of a Public Hearing at the regular meeting of the Council in the Council Chambers, Academy Building, Newark, Delaware, Tuesday, Sept. 12, 1961 at 8:00 P.M. E.D.P. at which time the Council will consider for final passage a proposed ordinance entitled: "AN ORDINANCE AMENDING CHAPTER V, CODE OF ORDINANCES OF THE CITY OF NEWARK, BY ADDING A NEW SECTION ENTITLED: 'ALCOHOLIC LIQUOR OFFENSES CONCERNING MINORS'."

Charles D. Long, Secretary of the Council of the City of Newark

Aug. 24, 31

NEWARK STATIONERS

STATIONERY-BOOKS

Office Machines SALES SERVICE

44 E. Main EN 8-4032

Sponsors of

GREETERS

Enjoy the Highest Reputation for Dependability.

They Are the Favorite Merchants of the Community.

FOR INFORMATION

Call EN 8-2490

Hostess

Mrs. Ross E. Hofnagle

GREETERS, INC.

Newark - Wilmington Service

Box 1463, WILMINGTON, DEL.

CITY OF NEWARK

Delaware

PLANNING COMMISSION

Regular Meeting

Agenda

September 11, 1961 - 7:30 P.M.

1. REPORT OF OFFICERS:

A. Minutes of Regular Meeting held July 10, 1961.

B. Minutes of Special Meeting held July 24, 1961.

C. Regular Meeting of August 7, 1961—not held due to lack of a quorum.

2. NEW BUSINESS:

A. Consider Rezoning application of Grover Surratt, Real Estate Agent, representing owners of 23 and 25 S. Chapel Street and the vacant lot between 25 S. Chapel Street and E. Delaware Avenue, to rezone from "RD" Residential to "BUSINESS C".

B. Consider application of Silverbrook Development Company for provisional approval of subdivision plot plan of "Oaklands" and approval of additional section now to be recorded and developed.

C. Consider application of Fairfield Development Company for provisional approval of subdivision plot plan of "Fairfield Crest" and approval of Section 3 now to be recorded and developed.

D. Consider application of A. & D., Inc. for annexation of a parcel of land known as "Arboretum Park", situated in Pender Hundred on West Chestnut Hill Road, and for provisional approval of subdivision plot plan and approval of section now to be recorded and developed.

8/31/21c

Two Christiana School alumni, Art Carney and Bill Mowll, played on the Gold team in Saturday's all-star charity football game. Another familiar figure locally was that of Lloyd Wells, who was a leader at the Christiana playground this summer.

Charles Hopkins, a salesman for Rice's Bread Company, is being welcomed back to his old route by

Christiana customers this week.

"Hopple" has been missed since last summer, when he was the victim of a serious accident on Route 40 at Glasgow.

Older Christiana residents paused last week to note the passing of two former leaders. Mrs. Ethel M. Hill of Newark who taught school in Christiana from 1927 to 1929, died at the age of 81. Dr. Elliot

IN NEWARK

for PHILCO and MAYTAG Appliances

See Rob O'Neal

THEO. S. JONES APPLIANCES

129 EAST MAIN ST. PHONE EN 8-1245

PAUL SCHLOSSER

Plumbing & Heating

Guaranteed Materials and Workmanship

Gen. Supplies and Fixtures

Trenching & Back-Filling

CALL EN 8-4757

171 E. MAIN ST. NEWARK

SIMONE'S

The very best in

Italian and American Food

Open Daily 11:30 a.m.—9 p.m.

Sundays—12:30-9 p.m.

A Brand New Restaurant at

177 EAST MAIN STREET in NEWARK

Lawnmowers Sharpened & Repaired

Pick-up & Delivery

SALES-SERVICE-PARTS-REPAIRS

Clinton - Lauson - Power Products - Jacobsen

Reo - Moto-Mower - Lawnboy - Kohler

Briggs Stratton - Brazing & Welding

Hand & Circular Saws Sharpened

WM. C. CROTHERS - 288 Red Mill Rd. - EN 8-7697

Smart Set

YOUNG SHOE FASHIONS

join the smart set...

GOING CASUALLY

Perfect for gadding, equally smart for lounging, studying, dating. Smart Set has injected the continental influence into fall stylings casually for you.

\$6.98

Newark DEPARTMENT Store

Newark Shopping Center

Save like sixty on '61s...Join the big

TRADE PARADE TO RAMBLER!

Right now is the right time to make the move to Rambler—during our dollar-saving Trade Parade to Rambler Sale! Thousands are doing it—why not you?

Come in! See how much more car Rambler gives you for hundreds less. See how much more we'll give for your car!

Choose from the widest selection of compact sedans, wagons, and convertibles—all beautiful—at lowest prices.

Compare! Ramblers give you more headroom. Higher doors, flush front floors. More power-per-parking, standard 6 or V-8—better performance, economy. Easier parking. Best rust protection top to tailpipe.

Come in and save during our Rambler Trade Parade!

278,494 MOTORISTS JOINED RAMBLER'S TRADE PARADE (in just 12 months)

164,163 Chevrolet, Ford, Plymouth Owners

83,814 Buick, Olds, Pontiac, Mercury, DeSoto, Dodge Owners

6,540 Cadillac, Chrysler, Lincoln Owners

PLUS 23,977 Studebaker, Corvair, Falcon, Comet, Valiant, Foreign, Misc. Owners

Trade-in figures furnished by a leading automotive statistical company

RAMBLER—World Standard of Compact Car Excellence

DENNISON MOTOR CO. 19 Haines Street, Phone ENdicott 8-4241

## Widows Over 62 Offered Social Security Increase

Widows 62 or older who applied for social security benefits—or who are eligible to apply—are affected by recent changes in the Social Security Act.

Social security benefits to widows age 62 or older will be higher when received early in September, Myron Milbourn, manager of the Wilmington social security district office, said today.

The amount of the increase for most widows is 10 per cent. For example, a widow who was receiving \$50 per month before the law changed will now receive \$55 per month.

Exceptions to the 10 per cent increase will be those widows who were receiving minimum (\$33) benefits before the new law. Such women will receive the new minimum of \$40 per month.

Field, who supplied the Presbyterian pulpit here during the 1940's, died at his home in Connecticut. Mr. and Mrs. E. W. Broomall have moved to Swarthmore, Pa. Their former home on Shields Lane is now occupied by Mr. and Mrs. James E. Broomall.

Mr. and Mrs. William Houle and son Billy have returned from a trip to Providence, R.I., where they visited Mr. Houle's relatives as well as Mrs. Houle's family, the Desrochers.

Bob Schulz left Monday for Chicago after spending the summer with his parents on East Main Street. He will visit his college roommate before resuming his studies at Southern Methodist University in Dallas, Tex.

Mr. and Mrs. William B. Kee, Jr., and family have returned from a vacation at Rehoboth Beach. The Rev. F. B. Geehr, new pastor of Hope Lutheran Church, has moved into the parsonage on Hare's Corner Road.

Do you know what first steps to take when someone in your family dies?

Newark's Most Modern Funeral Home

Ample Parking

William J. Warwick FUNERAL DIRECTOR

121 West Park Place Newark

ENDICOTT 8-9500

A Director of the National Association of Approved Morticians

THURS. TH 9 — FRI. TH 10

SAT. 8 to 6

BROOKSIDE PARK CENTER

55 Marrows Road

All Stores Closed Monday, Labor

Nationally Famous Brands

(Cut From Small Tender Hams)

SMOKED HAM

SHANK PORTION (Some Slices Removed)

BUTT PORTION (Some Slices Removed)

lb. 29¢ lb. 39¢

CHUCK STEAKS

7" RIB STEAKS

39¢ 69¢

MORRELL Pride CANNED HAM

3-lb. \$2.25 can

MAYFAIR SWISS CHEESE SLICES

Natural Aged 1-lb. pkg. 59¢

FRESH First of the Season Red Sockeye SALMON STEAKS

lb. 79¢

HAWAIIAN PUNCH or PUNCH-INELLO 3 46-oz. cans 95¢

HI-C GRAPE DRINK or HI-C FLORIDA PUNCH 3 46-oz. cans 95¢

LIBBY'S DEEP BROWN BEANS • With Pork in Tomato Sauce • With Pork & Molasses • Vegetarian Style 4 14-oz. cans 49¢

FRE-MAR STUFFED LARGE OLIVES . . . 3 4 1/4-oz. jars \$1.00

FRE-MAR MAYONNAISE . . qt. 53¢ jar

All Specials Effective Thru Sat., Sept. 2, 1961. We Reserve The Right To Limit Quantities

CORN

FARM-FRESH SWEET

Ear 3¢

CLIP THESE VALUABLE COUPONS!

50 COUPON FEATURE 50

30 COUPON FEATURE 30

50 FREE EXTRA 50

30 FREE EXTRA 30

MERCHANTS GREEN STAMPS

WITH THE PURCHASE OF

2-lb. PKG. of FRANKS

ANY BRAND

1

MERCHANTS GREEN STAMPS

WITH THE PURCHASE OF

CANTALOUPE

WESTERN PINK MEAT

3



## First Graders

(Continued from Page 1)

**Room 104** — Denise Anton, Virginia Bailey, Robert Buckingham, Donna Calhoun, Linda Cook, Daniel Daniels, Michelle Delamater, Lena Duncan, Keith Ewing, Wade Foraker, Denise Gullbault, Diana Herald, Frank Irwin, Shirley Kennedy, Elizabeth Lake, Laurie MacCammon, Craig Mellinger, John Pilecky, Jr., Rick Ramsbottom, LeWanna Schutz, Douglas Sing, Martha Steimel, Richard Stoops, Elaine Vicars, Donna Young.

## West Park Place School

**Room 107** — Marc Alessandria, Ernest Beers, David Bradley, James Burns, James Cawley, Barbara Ciolek, James Delaney, Cynthia Eastburn, Cynthia Felbeck, Brian Fischer, Albert Gillespie, Gail Hamilton, Anne Hutchinson, James Kelly, Sharon Kramer, Patricia Lanzetta, Natalie McClendon, William Merrick, Gayle Overmiller, Janet Peterson, Michael Robinson, Janet Schmitz, Paula Skinner, David Taylor, Randall Wegman, Patricia Whitman, Terri Willis, Victoria Wollaston and Paul Zeron.

**Room 108** — Raymond Arzinger, Barbara Biddison, Andrew Burchell, Susan Burnley, Christine Cox, Kathryn Cresswhite, Elizabeth Doyle, Ann Exline, Albert Flowers, James Grubb, Hane Gulick, Rebecca Houston, John Jensen, Carl Kroner, George Little, Wendy Luderitz.

## FOR SALE

## COUNTRY HOME

On Lot 200x200

Modern rancher only 7-years old, three extra large bedrooms, living room 21x14, large eating kitchen, 100% insulated, aluminum windows and doors, workshop, fenced yard, many other extras. G.I. Takeover, \$66 mo. includes all charges. Immediate possession. For particulars and inspection call

## FULL BASEMENT

Four bedrooms, 1½ baths, lot 65x120x70, front porch 20x8, aluminum, comb. storm windows and doors, full insulated, FHA TAKEOVER and many other extras \$14,900.

## 9 ACRES — COUNTRY HOME

Beautiful home with large shade trees. Four bedrooms and sewing room. First floor kitchen, den, parlor and dining room, large front porch overlooking shaded swimming pool. Many farm buildings, including a four-car garage. Easy to buy.

## SPARKLING RANCHER

Three beautiful bedrooms, large living room, brick fireplace, excellent condition and an outstanding buy, screened-in porch, plenty of storage, perfect for a young couple, FHA take-over, \$72.49 monthly includes everything. Inspect this one.

## LOTS

Call for a listing of our building lots and commercial lots.

## RENTALS

Four bedroom split-level featuring Recreation Room \$10. New 3-room apt. for delivery Nov. 15. Heat furnished .50¢.

**JOHN A. GORDON, Inc.**  
Realtor

In Newark — EN 8-2796  
In Wilmington OL 6-3345

## Robert Downes To Address Dinner Meeting For BPW

Newark's Robert N. Downes, U.S. Navy captain (ret.) and state director of civil defense, will address the Newark Business and Professional Women's Club dinner meeting next Tuesday at 6:30 p.m. at the Newark Country Club.

Non-members of the BPW are invited to attend and hear Captain Downes discuss civil defense measures.

Dinner reservations may be made by calling Mrs. Clarence A. Bader, Martindale Drive, Brookside, in the evenings.

Carol Mackey, Michele McVicker, Scott Moss, William Rasmussen, Robert Root, Clayton Sanders, Richard Shortess, Juliet Steinberg, Elbert Turner, Edward Weatherlow, Leslie Wickwire, and Wayne Wooster.

**Room 109** — Diane Berry, Bryan Brown, Stephen Bull, Gary Calvert, Rodney Correll, Colleen Denny, Barbara Eppes, James Evans, Laurie Ferris, Mary Ruth Godwin, Margaret Hickey, Helen Irwin, Michael Kennedy, Steve Layne, Mary McCormick, Laurie McCurdy, Michael Miklus, Shirley Palo, Debra Powlous, Jennifer Rice, Leo Schmitz, Julia Smith, Peter Stavrakis, Keith Thompson, Elizabeth Whallon, Sandra Windle, and Edith Zeuner.

**Room 110** — Ronnie Baldwin, Sharon Bonner, Eric Burns, Arthur Cameron, Rose Casapulla, Tina Maria Davis, William Diago, Patricia Eads, Lewis Fader, Wayne Frame, James Head, John Hitchens, Brandau Hughes, Edward Jenks, Virginia Keeler, Cheryl Kimmey, Judy Lambert, Richard Marcantonio, Johnnie Meadows, Michael Moore, Kevin O'Shea, Kenneth Piluso, Bruce Roberts, Forrest Shuster, Teresa Swift, Elaine Waddell, Thomas Williams and George Wright.

## Central School

**Room 102** — Douglas Bauer, Michael Boyle, David Burch, Norris Carnes, Harry Crossan, Kevin Downs, Catherine Ferron, Jimmy Gilbert, Timothy Hawks, David Jennings, Dwayne Joins, Sylvia Levin, Susan McCauley, Joyce Miller, Barbara Quinn, Kathryn Reutter, Gene Rush, David Scott, Craig Seppanen, and Karen Woods.

**Room 115** — John Bailey, Pamela Bingham, Stephen Coverdale, Philip Dean, Barbara Ewing, David Getty, Jeremy Haladyna, Herbert Johnson, Willard Johnson, Janice Mathews, Linda McKee, Wayne

## MUSIC!

## MUSIC!

## MUSIC!

Good Music: Rich, Listenable, Pleasant Music — all day long, on Delaware's favorite station for discriminating listeners.

## WTUX

1290

Morris, Robert Maull, Stephen Peterson, Melissa Powell, Harold Rimmer, Gary Robinson, Donna Scott, James Thomas and Christopher Tully.

**Room 125** — Charles Alexander, Janet Becker, Blair Bennett, Anna Boyd, Phillip Chester, Richard Collins, Robert Dawson, Ellen Earley, Daleanne Frazee, Daniel Hagan, Denise Hayman, Kirby Jackson, Danny Lee, Brian Noyes, Kristin Perry, William Reese, Kevin Ross, Daniel Stewart and Amy Westcott.

**Room 128** — Robert Beaver, Alvin Cherry, Steven Daiber, Donald Dutton, Janet Fowlkes, Joy Gravener, Rodney Gregg, Edward Hayman, Joseph Hubbard, Edwin James, Keith Kurman, James Leader, Paul McCormick, Robert Mitchell, Deborah Rathbone, Nancy Redd, Ann Saunders, Coriellia Thomas and Patricia Trivitt.

**Jennie Smith School**  
**Section 1** — Steven Adkins, Stephanie Bull, Carlton Carey, Debra Charlton, Gregory Davies, Phyllis Denny, Nancy Foster, Frank Fricker, Kim Hansen, Thomas Harrison, Mark Housen, Jean Ingraham, Gary Jester, Susan Jewell, Julie Laskaris, Gary MacGregor, Suellen Marley, Janet Mitchell, Raymond Moll, Keith Moore, Robert Punt, Gay Records, William Richardson, Sandra Rima, Donald Swartz, Michael Ward, Deborah Woerner, Michael Yost and Connie Young.

**Section 2** — Robert Alexander, Donna Carlini, Glenn Carpenter, Brenda Chiffons, Stephen Davis, Patricia Dutton, Mike Elliott, Debbie Reddick, Patricia Rich, Debra Healey, Frank Hodgdon, David Kalmbacker, Sandra Leader, Jeffrey MacGuinness, Theresa Masiello, William Moore, Janet Mullin, Robert Okerblom, Thomas Raughley, Charles Robikinski, Richard Ross, Mary Smith, Mark Taylor, Dennis Walmsley, Michael Weidemann, Mark Wineland and Daniel Zannino.

**Section 3** — Pamela Anderson, Bonnie Baker, Paul Blanchard, Julia Boyle, Mike Burke, John Cavely, Linda Clark, Steven Davison, Kathy Earley, Paul Gaglia, Sandra Garber, Theresa Higgins, Brian Hoel, Donald Kelter, Michael Kerrigan, Patricia King, Pamela Lightner, Anita MacKear, Stephen Martino, Karen Murray, Kurt Popper, David Reddick, Patricia Rettig, William Roy, Stanley Spence, Merritt Tilley, Ronald Vitkusky and Neil Wriston.

**Section 4** — Patricia Beatie, Roger Blanchard, Ellen Carnes, Mike Christie, Lynn Cousins, Beverly Edge, Gary Frazee, Lisa Grovum, Shari Ann Guerrazzi, Earl Harrington, Patsy Hash, Vickie Huber, John Irons, Kathy Kosey, Robert Lavelle, Diane Lloyd, Donna Lloyd, George McClelland, Freda McDowell, Pam Mishaw, Connie Naylor, Ronnie Phillips, David Reed, Nancy Reynier, Tommy Stanton, Samuel Ulin, Kenneth Wallace, Jeannette Wersinger, and David Willis.

**Section 5** — Dane Bower, Patricia Bressler, Barbara Carroll, Linda Christman, Thomas Claybaugh, Julie Davidson, Steven Fisher, Gail Ford, Mary Hamill, Kerry Harrington, George Holm, Lee Ann Hoopes, Scott Illingworth, Deborah Krammes, Alan Leaning, Connie MacGuinness, Dean Mast, Michael McDermid, Barbara McGhee, Timothy Mulkins, Joseph Parker, Pamela Poole, Douglas Rex, Sue Ann Riggs, Michael Rust, Tommy Short, Michael Upton, Linda Wloughby, Deborah Wotten and Harry Woytko.

## Medill School

**Section 1** — Bruce Anderson, Gayle Carey, Terry Dick, William Dickson, Kent Dixon, Sandra Bruce Ferro, Elaine Foraker, Kathleen Ford, Cheryl Gervan, Larry Godwin, Michael Garwood, Gerald Iverson, Dorothy Larnick, Susan Lovett, Charlene Lowe, John Lynch, John Mahaffey, Cynthia Orr, Craig Shierling, Paulette Smith,

Cheryl Sparks, Susan Savage, David Sutton, Philip Thompson, Susan Wells, Willard Williams, Wayne Wingard, and Barbara Woodlin.

**Section 2** — Robert Adams, Paul Albright, Joan Alley, Diane Alls, Mary Andersen, James Barbour, Rardie Blessing, Kathryn Cheesman, William Clay, Steven Coleman, Gale Dean, Janice Eastman, Diana Hanson, Danna Harrington, Thomas Harrison, Jo Ann Lanci, Jacqueline Lynam, Candace McNair, Guy Newland, Richard Phelps, Kurt Raughley, Sidney Roark, Jeffery Sayers,

Barbara Smock, Liza Taylor, Helen Ternoski, David Truitt and Emilee Williamson.

**Section 3** — Jan, Eliz. Benson, Larry Bond, Jordan Brown, Craig Carpenter, Mark Colpa, Joan Cordrey, Florence Coursey, Diana Dean, Thomas Farrel, Sheryl Hawkins, Judy Johnson, Frederick Jones, Barbara Kunkle, Allen Lee, Mary Lewis, Barry McDaniel, Michael Michael, Morris Patrick, Deborah Renn, Susan Scott, George Schorah, Janet Smith, Sherry Starkey, Judy St. John, Daniel Tucker, Edith Warren, Karen Weis, Risa Wertz,

and Robert Zickefoose.

**Section 4** — Mini Carleton, Julie Chambers, Elwood Cox, Nancy Dugan, Daniel Gibbons, Kevin Green, Thomas Guhl, Robert Handly, Deborah Hines, Randall Hunt, Gary Laferty, Robin Lee, LuAnn MacLary, Vickie Magargal, Emily Mars, Barbara Meadows, John Mitchell, Robert Morrison, Francis Mullen, Robert O'Sullivan, Alan Parvis, Steven Rutter, Barry Schmidt, Ellen Severeance, Cynthia Walklet, Mary Wal-

ler, Brenda White, Christopher Wolfe, and Clarence Wooden.

**Section 5** — Gary Adams, Joseph Biscoe, Timothy Conaway, Gary Duhamel, Peggy Foote, Patricia Forbes, Gwendolyn Frazee, Diane Godwin, Margaret Holter, Falvores Jones, Donna Knapp, Molly Long, Judith Markell, Rick Martin, Roylene Matthews, Linda Pfrman, Sharon Quarles, Bruce Rash, Gail Robinson, Gary Robinson, Michael Sinclair, Holly Smith, Charles Spi-

cer, Donald Sweetman, Randy Tved, and Paula Wadell.

RONALD K. P. Painting Paper H&B Interiors & More EN 8-588-0

FOR NEWARK REAL ESTATE

Consult a Member of

THE NEWARK REAL ESTATE ASSOCIATION

FARMERS INSURANCE AGENCY, INC.

Wilmington Trust Bldg. Phone EN 8-8501

GROVER SURRATT

45 East Main Street Phone EN 8-8587

HUGH F. GALLAGHER, JR.

74 East Main Street Phone EN 8-8758

HANBY, PATTERSON & SCHWARTZ, INC.

71 East Main Street Phone EN 8-8748

NEWARK REAL ESTATE & INSURANCE CO.

Academy Apartments Bldg. Phone EN 8-8546

YOUNG & WILLIAMS

95 East Main Street Phone EN 8-8538

KEY TO LOTS O' LIVING BUY A HOME FIRST

ALL A&P MARKETS WILL BE OPEN LATE THURSDAY and FRIDAY

CLOSED LABOR DAY!

"Super-Right" TENDERED, SHORT SHANKED 12 TO 16-POUND

SMOKED HAM

THESE ARE GENEROUS SIZE PORTIONS... NOT ENDS!

SHANK PORTION (Some Slices Removed) 29¢

BUTT PORTION (Some Slices Removed) 39¢

10- to 12-Pound Small Whole Hams 51¢

12- to 16-Pound Whole Hams 47¢

Center Cut Slices of Ham 95¢

Semi-Boneless Hams "Super-Right" Fully Cooked, Skinless, Shankless. Sold Whole or Half 65¢

"Super-Right" Sliced Boiled Ham 1-lb. 99¢

All Sizes of Oven-Ready Turkeys from 5 Pounds Up

TURKEYS NONE PRICED HIGHER 37¢

CANNED HAM

Morrell or Armour 3 lb. can \$2.25

9 to 11-lb. DOMESTIC HAMS 65¢

B.L.B. IMPORTED HAMS 3 lb. \$2.85

Domestic Hams 5 lb. \$3.89

JUMBO SIZE SHRIMP

Fresh Chesapeake Bay Crab Meat

LUSCIOUS SEEDLESS GRAPES 2 lbs. 29¢

FRESH NEARBY, SWEET CORN

CRISP ICEBERG LETTUCE

SOLID SLICING TOMATOES

NEARBY FRESH PEACHES

JUMBO HONEYDEW MELONS

A&P's Fine Frozen Food Buys!

MORTON'S FRUIT PIES Apple, Cherry or Coconut 3 for 89¢

BANQUET MEAT PIES Beef, Chicken or Turkey 6 for \$1.00

A&P Sweet Peas 2 lb. bag 49¢

A&P French Fries 2 16-oz. 55¢

Cubed Steaks 2 lb. \$1.59

Strawberries A&P sliced 2 16-oz. 63¢

A&P Orange Juice 5 4-oz. 89¢

Morton's Honey Buns 4 pkgs. 35¢

FRANK'S BEVERAGES In "NO DEPOSIT" CANS. 12-oz. 89¢

HAWAIIAN PUNCH or PUNCHINELLO 3 46-oz. 95¢

IONA PEAS OR TOMATOES 2 cans 25¢

ROLLS Jane Parker Sandwich or Frankfurter Roll 2 pkgs. 25¢

A&P PINEAPPLE- GRAPEFRUIT DRINK Also A&P Grapefruit Juice 2 46-oz. 49¢

GLICK'S PITTED RIPE OLIVES 2 7-oz. 75¢

AP Super Markets

The Great Atlantic & Pacific Tea Co., Inc.

AMERICA'S DEPENDABLE FOOD MERCHANT SINCE 1859

All prices effective through Saturday, Sept. 2nd, 1961

We must sell our entire stock of new '61 Fords at once!

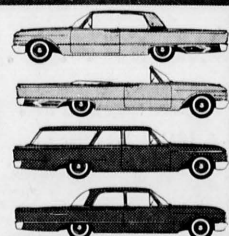
Everything must GO in our final Year-End Clearance!!! Prices slashed on every new Ford in stock! Savings you can't afford to miss!

PICK YOURS OUT! DRIVE IT AWAY TODAY!

Extra-special deals on Station Wagons! Lowest down payments possible — longest terms — best deals ever!

Prices you'll never see again — at our great

FORD FINAL CLEARANCE SALE



NO OTHER full-size car SAVES YOU \$\$ like the '61 Ford

• 30,000 miles between lubrications of major chassis components • 4,000 miles between oil changes • Brakes that adjust themselves automatically • And no other dealer saves you money like your Friendly Ford Dealer. Usually the lowest prices on all models. Better trade allowances because we sell used cars, too. And we stand back of what we sell!

The key to a good deal is a good dealer

FADER MOTOR CO.

Ken Williams, Manager

42 W. Main St. (Newark, Del.) EN 8-2571

ler, Brenda White, Christopher Wolfe, and Clarence Wooden.

Section 5 — Gary Adams, Joseph Biscoe, Timothy Conaway, Gary Duhamel, Peggy Foote, Patricia Forbes, Gwendolyn Frazee, Diane Godwin, Margaret Holter, Falvores Jones, Donna Knapp, Molly Long, Judith Markell, Rick Martin, Roylene Matthews, Linda Pfrman, Sharon Quarles, Bruce Rash, Gail Robinson, Gary Robinson, Michael Sinclair, Holly Smith, Charles Spi-

cer, Donald Sweetman, Randy Tved, and Paula Wadell.

RONALD K. P. Painting Paper H&B Interiors & More EN 8-588-0

FOR NEWARK REAL ESTATE

Consult a Member of

THE NEWARK REAL ESTATE ASSOCIATION

FARMERS INSURANCE AGENCY, INC.

Wilmington Trust Bldg. Phone EN 8-8501

GROVER SURRATT

45 East Main Street Phone EN 8-8587

HUGH F. GALLAGHER, JR.

74 East Main Street Phone EN 8-8758

HANBY, PATTERSON & SCHWARTZ, INC.

71 East Main Street Phone EN 8-8748

NEWARK REAL ESTATE & INSURANCE CO.

Academy Apartments Bldg. Phone EN 8-8546

YOUNG & WILLIAMS

95 East Main Street Phone EN 8-8538

KEY TO LOTS O' LIVING BUY A HOME FIRST

ALL A&P MARKETS WILL BE OPEN LATE THURSDAY and FRIDAY

CLOSED LABOR DAY!

"Super-Right" TENDERED, SHORT SHANKED 12 TO 16-POUND

SMOKED HAM

THESE ARE GENEROUS SIZE PORTIONS... NOT ENDS!

SHANK PORTION (Some Slices Removed) 29¢

BUTT PORTION (Some Slices Removed) 39¢

10- to 12-Pound Small Whole Hams 51¢

12- to 16-Pound Whole Hams 47¢

Center Cut Slices of Ham 95¢

Semi-Boneless Hams "Super-Right" Fully Cooked, Skinless, Shankless. Sold Whole or Half 65¢

"Super-Right" Sliced Boiled Ham 1-lb. 99¢

All Sizes of Oven-Ready Turkeys from 5 Pounds Up

TURKEYS NONE PRICED HIGHER 37¢

CANNED HAM

Morrell or Armour 3 lb. can \$2.25

9 to 11-lb. DOMESTIC HAMS 65¢

B.L.B. IMPORTED HAMS 3 lb. \$2.85

Domestic Hams 5 lb. \$3.89

JUMBO SIZE SHRIMP

Fresh Chesapeake Bay Crab Meat

LUSCIOUS SEEDLESS GRAPES 2 lbs. 29¢

FRESH NEARBY, SWEET CORN

CRISP ICEBERG LETTUCE

SOLID SLICING TOMATOES

NEARBY FRESH PEACHES

JUMBO HONEYDEW MELONS

A&P's Fine Frozen Food Buys!

MORTON'S FRUIT PIES Apple, Cherry or Coconut 3 for 89¢

BANQUET MEAT PIES Beef, Chicken or Turkey 6 for \$1.00

A&P Sweet Peas 2 lb. bag 49¢

A&P French Fries 2 16-oz. 55¢

Cubed Steaks 2 lb. \$1.59

Strawberries A&P sliced 2 16-oz. 63¢

A&P Orange Juice 5 4-oz. 89¢

Morton's Honey Buns 4 pkgs. 35¢

FRANK'S BEVERAGES In "NO DEPOSIT" CANS. 12-oz. 89¢

HAWAIIAN PUNCH or PUNCHINELLO 3 46-oz. 95¢

IONA PEAS OR TOMATOES 2 cans 25¢

ROLLS Jane Parker Sandwich or Frankfurter Roll 2 pkgs. 25¢

A&P PINEAPPLE- GRAPEFRUIT DRINK Also A&P Grapefruit Juice 2 46-oz. 49¢

GLICK'S PITTED RIPE OLIVES 2 7-oz. 75¢

AP Super Markets

The Great Atlantic & Pacific Tea Co., Inc.

AMERICA'S DEPENDABLE FOOD MERCHANT SINCE 1859

All prices effective through Saturday, Sept. 2nd, 1961

AP Super Markets

The Great Atlantic & Pacific Tea Co., Inc.

AMERICA'S DEPENDABLE FOOD MERCHANT SINCE 1859

All prices effective through Saturday, Sept. 2nd, 1961

AP Super Markets

The Great Atlantic & Pacific Tea Co., Inc.

AMERICA'S DEPENDABLE FOOD MERCHANT SINCE 1859