

**DELAWARE GEAR UP
PARENT AND YOUTH SURVEY RESULTS**

A. I. DUPONT MIDDLE SCHOOL

JUNE 2004

Margarete Kedzior, M.S., Graduate Research Assistant
Pamela B. Stazesky, Ph.D., Associate Director
Andrew Augustine, M.S, Educational Research



Delaware Education Research & Development Center
University of Delaware
Newark, DE 19716

PUBLICATION T04-010.1




EXECUTIVE SUMMARY

The Delaware Education Research and Development Center at the University of Delaware administered the parent and youth survey to assess perceptions as one component of the annual evaluation. These surveys were designed to gather information about the programs primary goals:





- ☑ to engage students, parents, families, and community members in an organized program which results in student academic achievement and post-secondary planning,
- ☑ to engage school personnel in professional development services that lead to sustainable improvements in practice, and
- ☑ to engage and focus financial aid resources.

The evaluation of the Delaware Gear Up projects has proceeded along two lines of activity: 1) formative evaluation to provide relevant information to the project staff, and 2) the impact of the initiative on students and parents as it relates to student achievement and post-secondary planning. Data to measure progress towards the project goals were collected using two primary methods including surveys and existing data sources. Selected evaluation results are highlighted below.




BELIEFS ABOUT HIGHER EDUCATION

-  Nearly all students believe that getting an education beyond high school is very important to their future.
-  Most students believe that a person with a college degree earns more money in a year than a person without a college degree.
-  While about three-fourths of 7th and 8th grade students plan to continue their education beyond high school, about twenty percent of the students are unsure. About half of 8th grade students plan to earn at least a bachelor's degree.

PREPARATION FOR COLLEGE

-  Slightly less than sixty percent of 8th grade students have an idea of what courses to take in high school to prepare for college.
-  Some 8th grade students (27%) have spoken to someone at their school about the entrance requirements for college.
-  Some parents (21%) of 8th grade students have spoken with someone at their child's school about the courses their son/daughter needs to take to get into college.
-  Some parents (28%) of 8th grade students feel that have enough information about what their child needs in order to be prepared for college.

ROLE OF PARENTS

-  Parents' opinions and expectations matter to students. Most students stated that it is very important what their parents think about how much education to pursue.
-  About two-thirds of 8th grade students and almost three-fourths of 7th grade students indicated that their parents expect them to earn a bachelor's degree.
-  Over half of the students indicated their get most of their information about options for education after high school from their parents.

- 👤 A parent is cited as the person who usually helps with homework. A classmate or friend is the second most frequently cited person.

FINANCES

- 📊 Very few students (and parents) have an accurate perception of the costs of college. Most tend to over estimate, sometimes greatly over estimate, the costs of college.
- 📊 Many students believe they will be able to afford to attend a 4-year college or university after high school; however, twenty to thirty percent are unsure.
- 📊 The top reason why students do not plan to continue their education beyond high school is the cost. One-fourth of 8th grade students believe they cannot afford to go to college.
- 📊 Most parents are unaware of sources of money for higher education. Less than half of the parents of 8th grade students are aware of federal Pell grants, work study programs, institutional scholarships, private scholarships, or academic scholarships. About half of these parents had heard of athletic scholarships, state scholarships, or federal student loans.
- 📊 Some parents (26%) of 8th grade students have indicated they have started saving money for college.

The full report provides a detailed accounting of all survey results for the Gear Up project at A.I. duPont Middle School. Researchers at the University of Delaware Education Research and Development Center (R&D Center) are available to answer questions regarding analyses presented in this report or to assist in their interpretation. R&D Center staff may be contacted via electronic mail at ud-rdc@udel.edu or by phone at (302) 831-4433.

PURPOSE OF THE RESEARCH

The Delaware Education Research and Development Center at the University of Delaware administered the Parent and Youth Survey to assess perceptions as one component of the annual evaluation. These surveys were designed to gather information about the program's four primary goals:

- To engage parents, families, and community members in an organized program, which results in student academic achievement and post-secondary planning,
- To engage students in an organized programs that results in academic achievement and post-secondary planning,
- To engage school personnel in professional development services that lead to sustainable improvements in practice,
- To engage and focus financial aid resources.

METHODS

These surveys were developed by the staff of the R&D Center upon the advice and under the direction of representatives from the Delaware Gear Up project. The youth survey was administered school-wide at A.I. duPont Middle School to 7th and 8th grade students and their parents. Both the youth and the parent surveys were provided in both English and Spanish. These surveys are intended to provide the Delaware Gear Up project with information about the progress and satisfaction with the services they provide. A copy of each survey is included in Appendix A.

On January 13, 2004, youth surveys were administered to all 8th grade students present. Furthermore, each 8th grade student was given a parent survey (both English and Spanish versions provided to all parents) to take home to be completed by one of his/her parents. A self-addressed business reply envelope was provided with each parent survey packet. On January 20, 2004, the youth survey was administered to all of 7th grade students present. Each 7th grade student was given two parent surveys (English and Spanish versions) to take home to be completed by one of his/her parents. A self-addressed business reply envelope was provided with each parent survey packet. The final sample upon which these results are based includes:

- 📖 178 (a response rate of 86%) 8th grade students,
- 📖 159 (a response rate of 90%) 7th grade students
- 📖 60 (a response rate of 33%) parents of 8th grade students,
- 📖 28 (a response rate of 18%) parents of 7th grade students.

A comprehensive accounting of survey results is provided. Please note that responses for some questions may not add to 100% due to rounding. Presented in this volume are results for the student population in charts, for 7th grade students, for 8th grade students, and parents, for selected questions (see sections B and D). Furthermore, complete data for those selected questions is presented in tables with comparisons to last year's survey results in sections C and E. Lastly, complete data for remaining survey questions are presented in sections F and G. Student demographic data can be found in section A. Other analyses can be generated upon request.

SECTION A
STUDENT DEMOGRAPHIC DATA
2003-2004

STUDENT DEMOGRAPHICAL DATA

1. Gender:

	7 th grade	8 th grade	All respondents
Male	50%	46%	48%
Female	50%	53%	51%
MD ¹	1%	1%	2%

2. Race:

	7 th grade	8 th grade	All respondents
American Indian/Alaska Native	3%	3%	3%
Black or African American	42%	36%	39%
Native Hawaiian/Pacific Islander	0%	0%	0%
Asian	1%	1%	1%
White	20%	25%	23%
Hispanic/Latino	25%	29%	27%
Bi-racial	6%	4%	5%
MD	3%	2%	2%

3. Age:

	7 th grade	8 th grade	All respondents
12 years	33%	0%	15%
13 years	56%	59%	57%
14 years	9%	34%	22%
15 years	1%	5%	3%
MD	1%	2%	2%

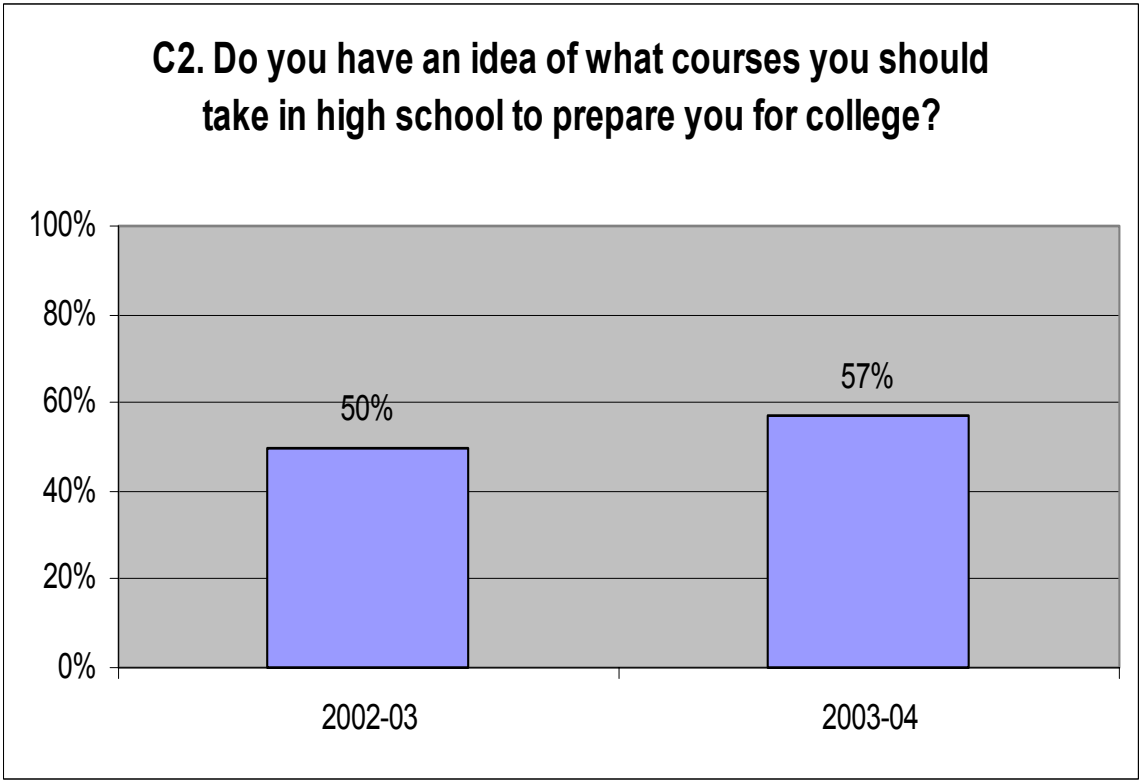
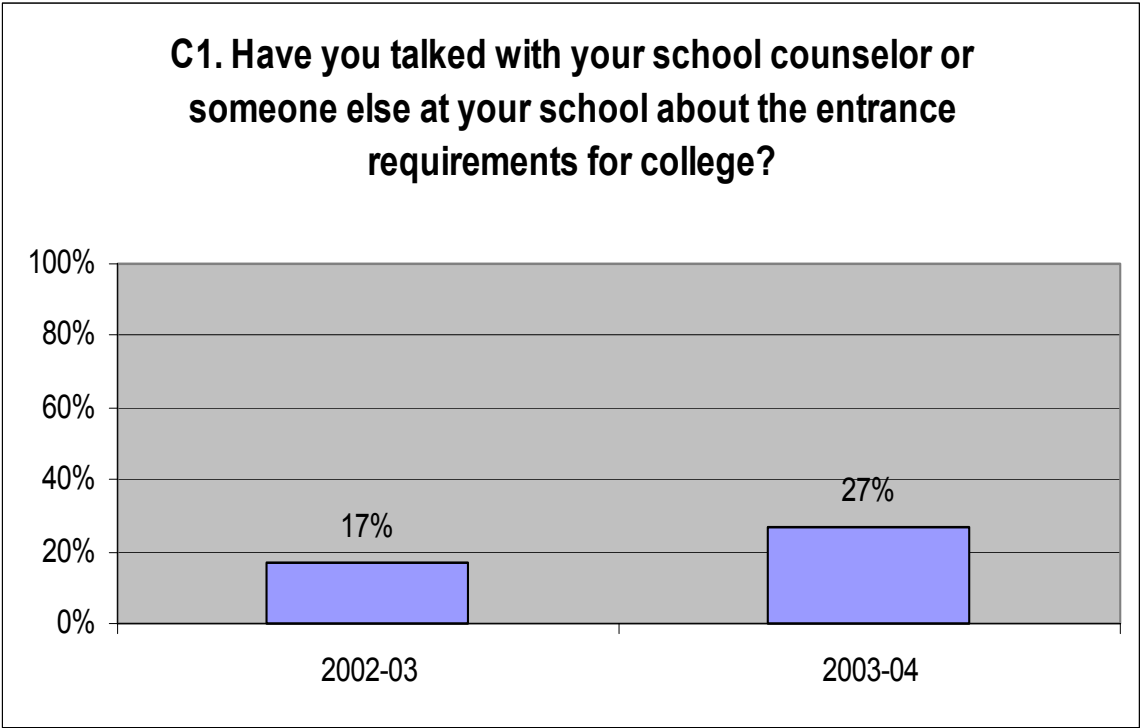
4. Grade:

7 th grade	159
8 th grade	178

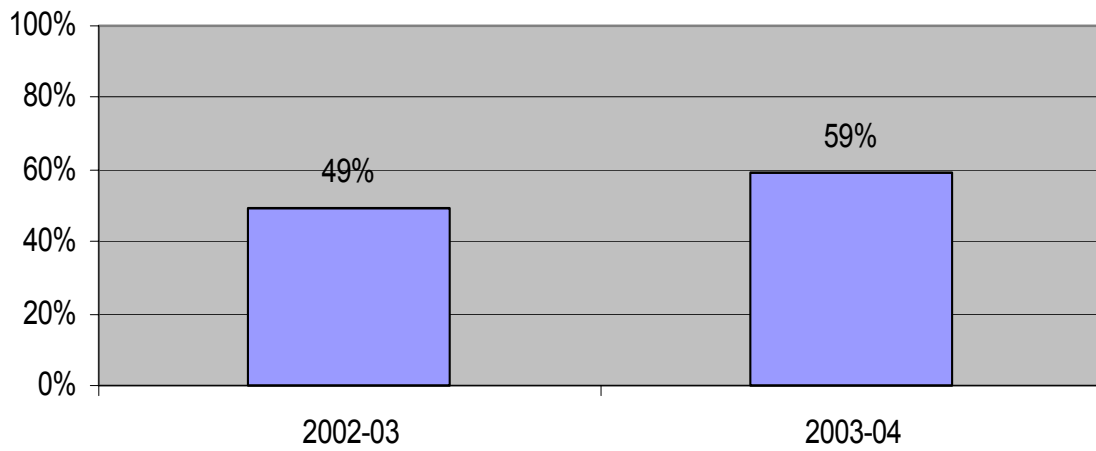
¹ MD represents the amount of missing data from participants, i.e., percent of those who did not respond to the survey question.

SECTION B
GRAPHS OF SELECTED QUESTIONS ABOUT COLLEGE FROM YOUTH SURVEY

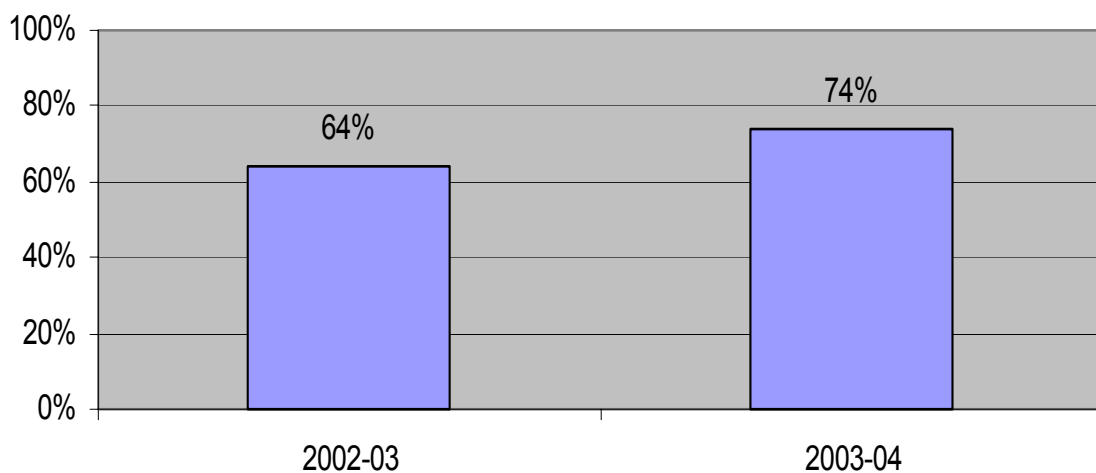
The charts in this section show only “YES” responses for 7th grade class in 2002-2003 as compared to 8th grade class in 2003-2004. For complete data related to each chart, see SECTION C.



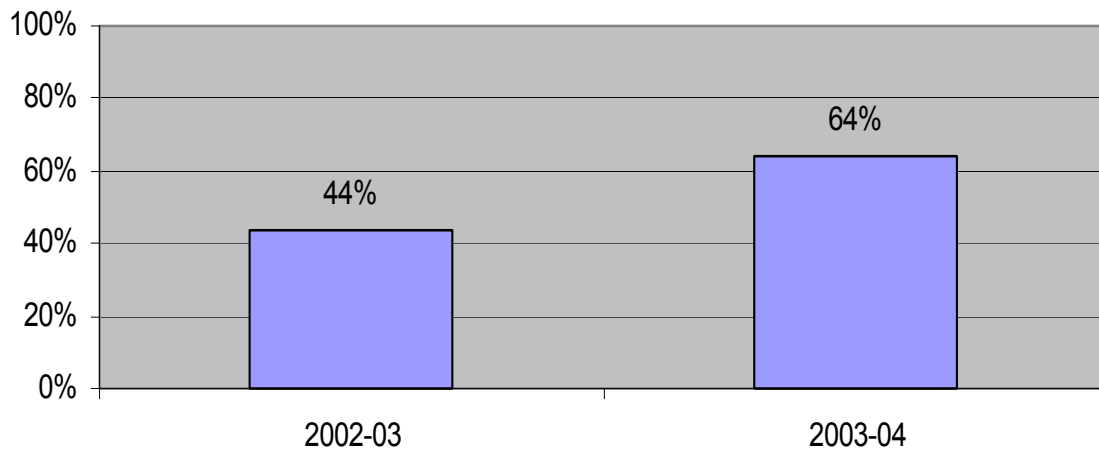
**C3. Have you heard of the following types of
postsecondary schools?
2-year or community college**



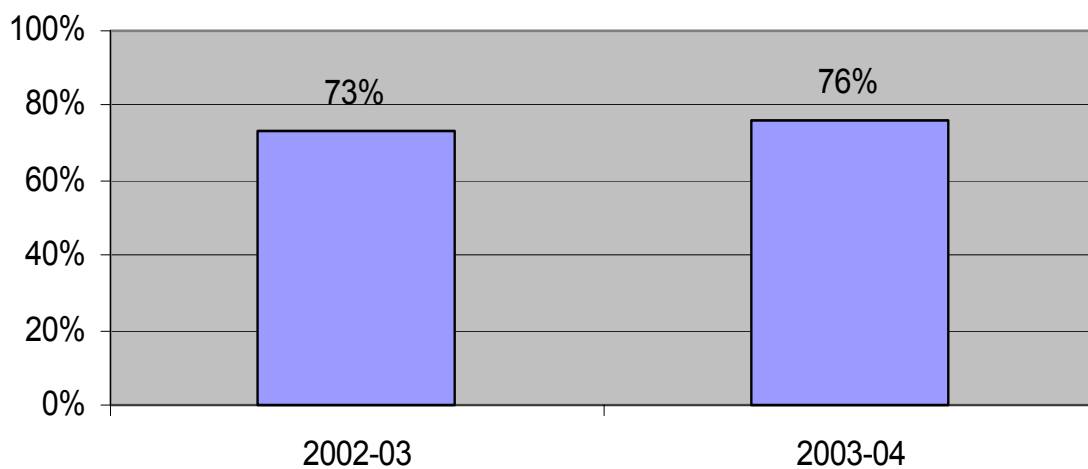
**C3. Have you heard of the following types of
postsecondary schools?
4-year college or university**



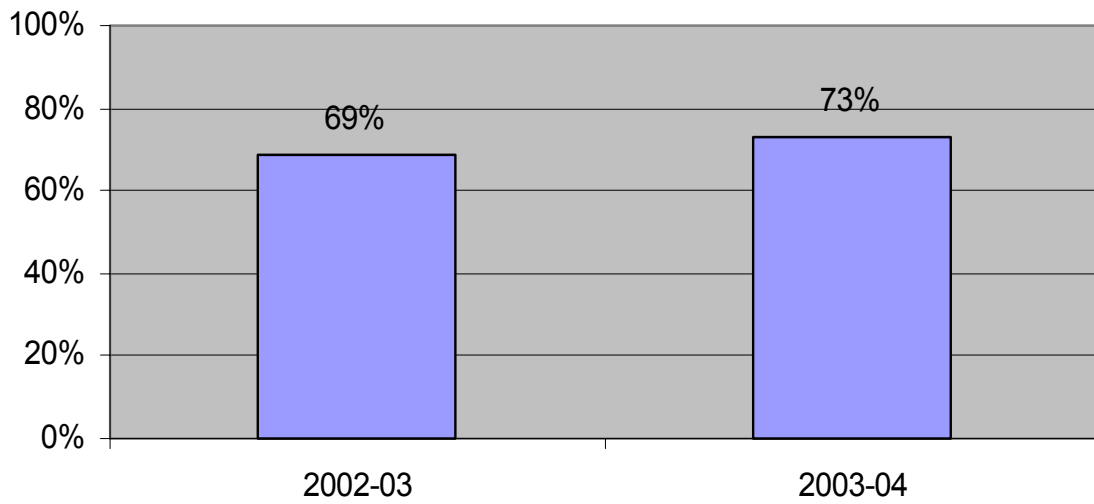
**C3. Have you heard of the following types of
postsecondary schools?
Vocational, trade or business school**



**C7. Do you think a person with a college degree
earns more money in a year than a person who
does not have a college degree?**

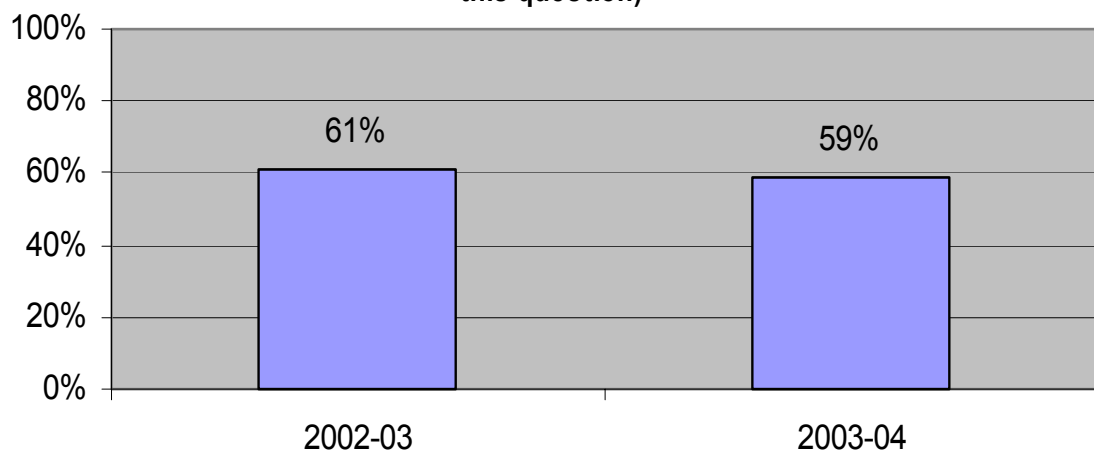


D1. Do you think you will continue your education after high school?

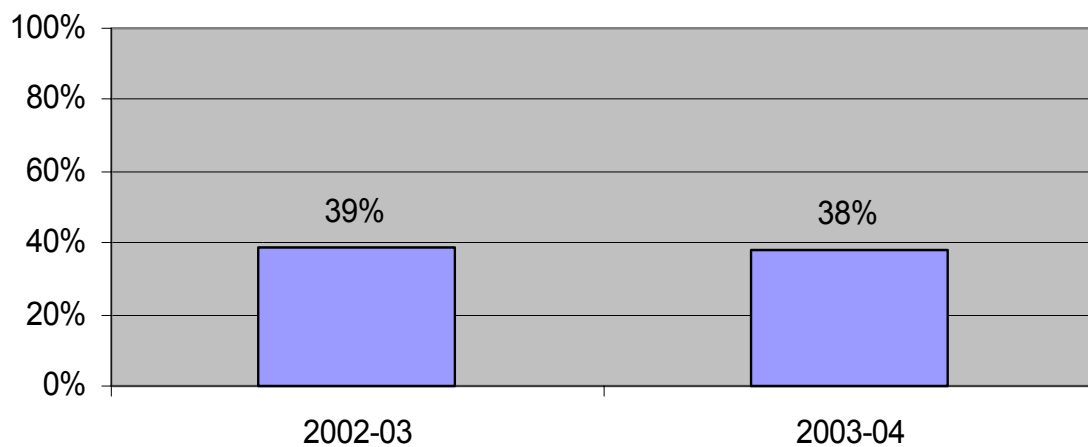


D2. Do you think you will be able to afford to attend a 4-year college or university after high school?

(Graph indicates respondents who answered definitely or probably to this question)

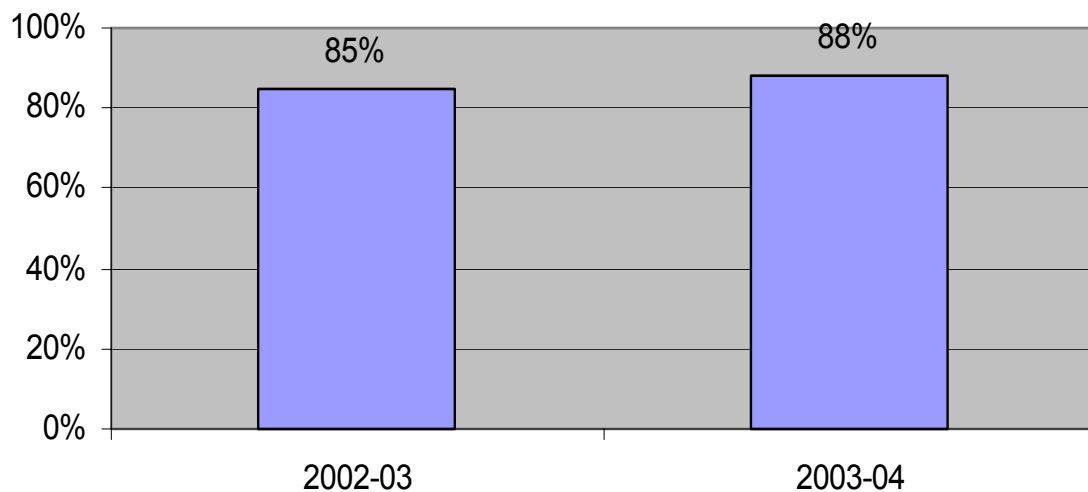


D6. During the past year, have you discussed the academic requirements for attending a 4-year college with any adult in your household?

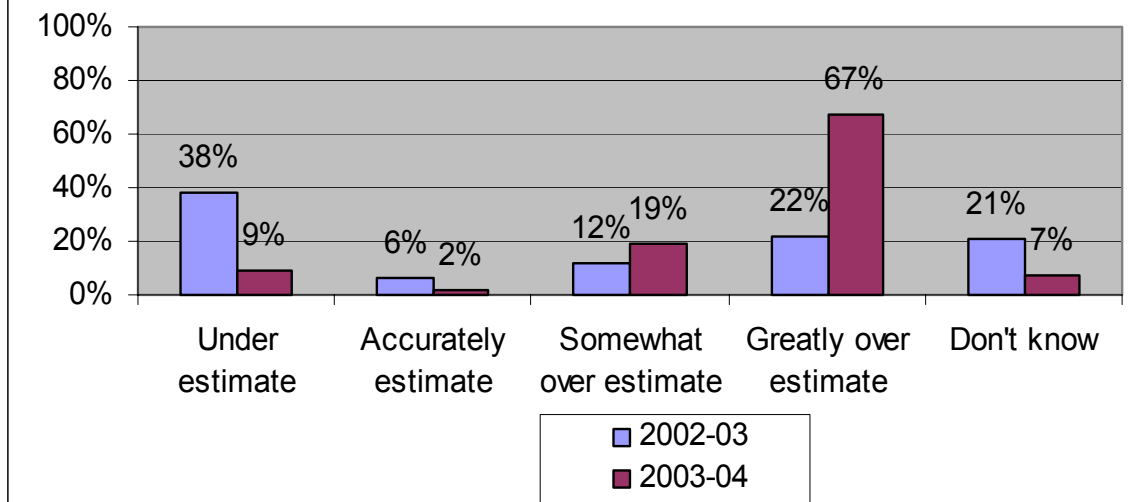


C6. How important to your future is getting an education beyond high school?

(graph indicates respondents who answered very important to the question)



C4. How much do you think it costs to attend a 4-year public college in your state for one year (tuition and fees only)?



Note: Under estimates = \$0 - \$3,795
 Accurately estimates = \$3,796 - \$6,140 (2002-03); \$3,796 - \$6,390 (2003-04)
 Somewhat over estimates = \$6,141 - \$19,999 (2002-03); \$6,391 - \$19,999 (2003-04)
 Greatly over estimates = \$20,000 +

SECTION C
SELECTED QUESTIONS ABOUT COLLEGE FROM YOUTH SURVEY
TREND ANALYSIS
2002-2003 AND 2003-2004

YOUTH SURVEY RESULTS OF SELECTED QUESTIONS

C1. Have you talked with your school counselor or someone else at your school about the entrance requirements for college?

	6 th grade	7 th grade	7 th grade	8 th grade	All respondents	
	2002-03	2003-04	2002-03	2003-04	2002-03	2003-04
Sample size	N=29	N=159	N=189	N=178	N=218	N=337
Yes	7%	19%	13%	27%	12%	23%
No	93%	81%	86%	73%	87%	76%
MD	0%	1%	1%	1%	1%	1%

C2 Do you have an idea of what courses you should take in high school to prepare you for college?

	6 th grade	7 th grade	7 th grade	8 th grade	All respondents	
	2002-03	2003-04	2002-03	2003-04	2002-03	2003-04
Sample size	N=29	N=159	N=189	N=178	N=218	N=337
Yes	59%	62%	50%	57%	51%	59%
No	41%	37%	47%	42%	46%	39%
MD	0%	2%	3%	1%	2%	2%

C3. Have you heard of the following types of postsecondary schools?

2-year or community colleges	6 th grade	7 th grade	7 th grade	8 th grade	All respondents	
	2002-03	2003-04	2002-03	2003-04	2002-03	2003-04
Sample size	N=29	N=159	N=189	N=178	N=218	N=337
Yes	52%	48%	49%	59%	50%	54%
No	48%	36%	45%	34%	45%	35%
MD	0%	16%	6%	7%	5%	12%

4-year college or university	6 th grade	7 th grade	7 th grade	8 th grade	All respondents	
	2002-03	2003-04	2002-03	2003-04	2002-03	2003-04
Sample size	N=29	N=159	N=189	N=178	N=218	N=337
Yes	97%	77%	64%	74%	68%	75%
No	3%	16%	33%	22%	29%	19%
MD	0%	7%	3%	5%	3%	6%

Vocational, trade or business school	6 th grade	7 th grade	7 th grade	8 th grade	All respondents	
	2002-03	2003-04	2002-03	2003-04	2002-03	2003-04
Sample size	N=29	N=159	N=189	N=178	N=218	N=337
Yes	72%	50%	44%	64%	48%	57%
No	28%	33%	49%	29%	46%	31%
MD	0%	16%	7%	7%	6%	12%

C4. How much do you think it costs to attend a 4-year public college in your state for one year (tuition and fees only)?

4-year public college \$ _____

	2002-03					2003-04		
Cost	6 th grade	7 th grade	All respondents		Cost	7 th grade	8 th grade	All respondents
\$0 - \$99	0%	4.7%	4.3%		\$0 - \$99	1.2%	1.8%	1.5%
\$100 - \$999	3.4%	14.7%	13.3%		\$100 - \$999	2.4%	3.0%	2.7%
\$1000 - \$3795	24.0%	18.5%	19.4%		\$1000 - \$3795	1.9%	4.2%	3.0%
\$3796 - \$6140	10.2%	6.3%	7.0%		\$3796 - \$6390	2.4%	1.8%	2.1%
\$6141 - \$9999	3.4%	2.5%	2.9%		\$6390 - \$9999	3.2%	1.8%	2.4%
\$10000 - \$19999	6.8%	9.5%	9.3%		\$10000 - \$19999	5.0%	17.1%	11.3%
\$20000 - \$29999	6.8%	6.9%	6.9%		\$20000 - \$29999	8.1%	5.8%	5.8%
\$30000 - \$49999	3.4%	3.7%	3.8%		\$30000 - \$49999	5.0%	5.1%	5.1%
\$50000 - \$99999	13.7%	3.7%	5.3%		\$50000 - \$99999	6.8%	10.3%	8.7%
\$100000 +	10.2%	7.7%	8.6%		\$100000 +	55.4%	45.7%	52.6%
MD	17.1%	21.2%	6.9%		MD	6.9%	5.6%	6.8%

There are two 4-year public colleges in the state of Delaware. The shaded area indicates students who came within \$500 of the annual cost of a 4-year public college in Delaware. Tuition and fees for the University of Delaware were \$5,640 per year for the 2002-2003 school year and \$5,890 for the 2003-2004 school year. Delaware State University costs \$4,296 per year for both of those school years.

C6. How important to your future is getting an education beyond high school?

	6 th grade	7 th grade	7 th grade	8 th grade	All respondents	
	2002-03	2003-04	2002-03	2003-04	2002-03	2003-04
Sample size	N=29	N=159	N=189	N=178	N=218	N=337
Very important	97%	93%	85%	88%	87%	90%
Somewhat important	3%	5%	10%	9%	9%	7%
Not important	0%	1%	2%	1%	1%	1%
Don't know	0%	2%	3%	2%	2%	2%
MD	0%	0%	1%	0%	1%	0%

C7. Do you think a person with a college degree earns more money in a year than a person who does not have a college degree?

	6 th grade	7 th grade	7 th grade	8 th grade	All respondents	
	2002-03	2003-04	2002-03	2003-04	2002-03	2003-04
Sample size	N=29	N=159	N=189	N=178	N=218	N=337
Yes	94%	76%	73%	76%	75%	77%
No	7%	8%	11%	6%	10%	7%
Don't know	0%	15%	16%	16%	14%	15%
MD	0%	1%	1%	0%	1%	1%

D1. Do you think you will continue your education after high school (that is, go to college or attend a trade school, etc.)?

	6 th grade	7 th grade	7 th grade	8 th grade	All respondents	
	2002-03	2003-04	2002-03	2003-04	2002-03	2003-04
Sample size	N=29	N=159	N=189	N=178	N=218	N=337
Yes	97%	79%	69%	73%	73%	75%
No	0%	2%	5%	5%	4%	3%
Not sure	0%	18%	22%	21%	19%	20%
MD	3%	1%	5%	1%	5%	2%

D2. Do you think you will be able to afford to attend a 4-year college or university after high school?

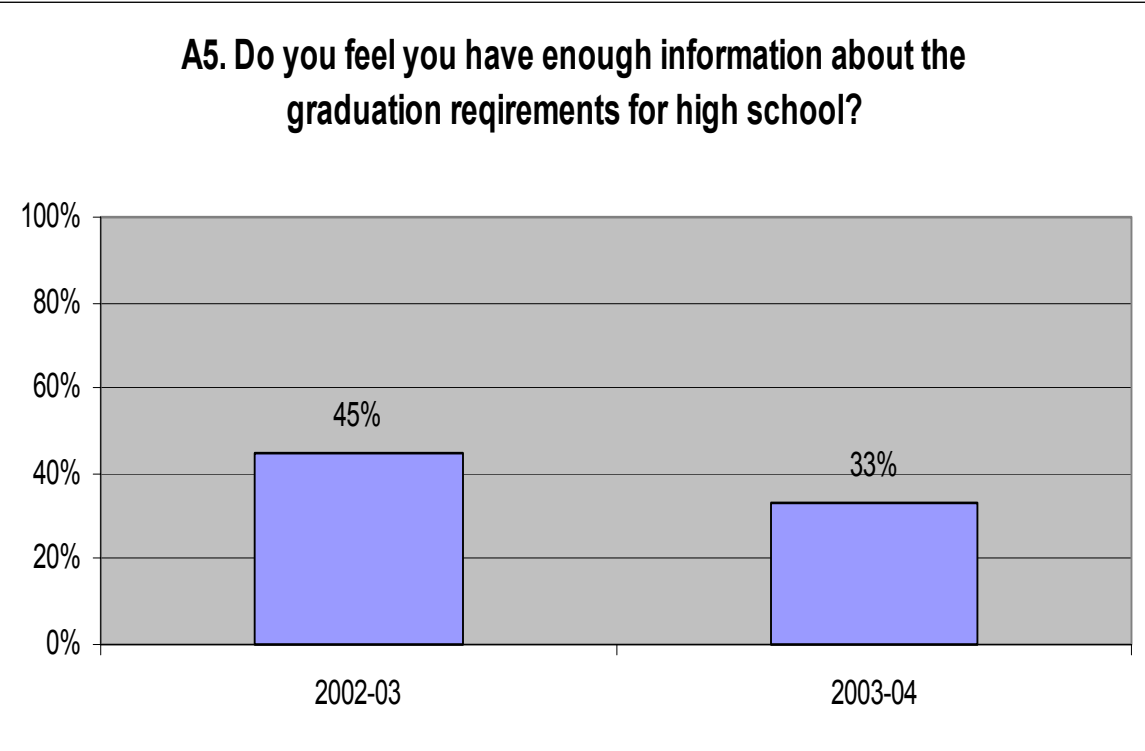
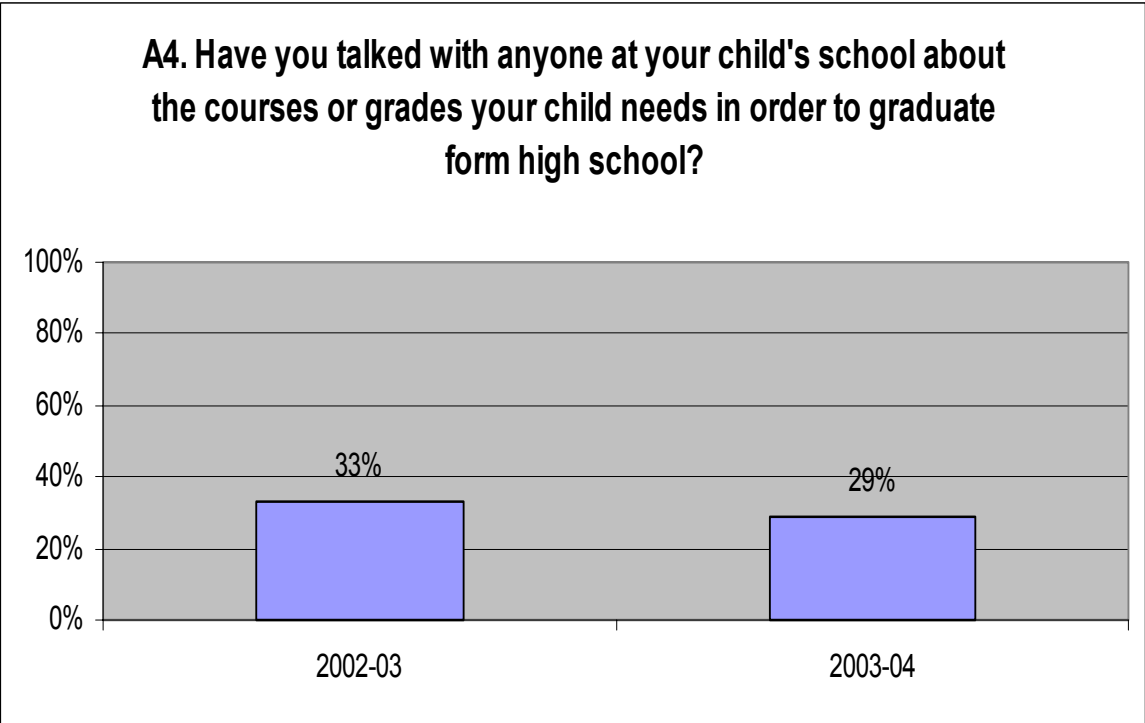
	6 th grade	7 th grade	7 th grade	8 th grade	All respondents	
	2002-03	2003-04	2002-03	2003-04	2002-03	2003-04
Sample size	N=29	N=159	N=189	N=178	N=218	N=337
Definitely	38%	30%	23%	20%	25%	24%
Probably	48%	34%	38%	39%	39%	36%
Not sure	10%	21%	29%	30%	26%	26%
I doubt it	0%	11%	3%	7%	3%	9%
Definitely not	0%	3%	3%	5%	2%	4%
MD	3%	1%	5%	1%	5%	2%

D6. During the past year, have you discussed the academic requirements for attending a 4-year college with any adults in your household?

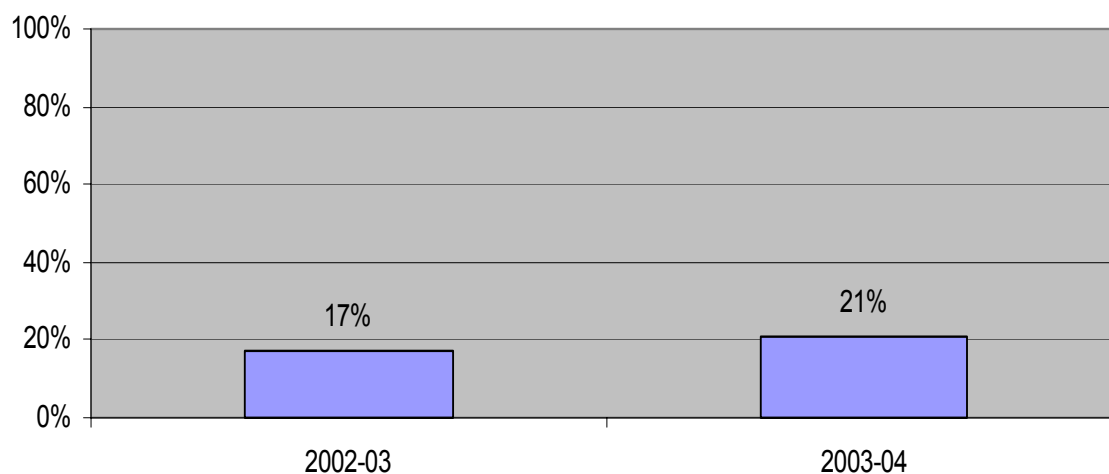
	6 th grade	7 th grade	7 th grade	8 th grade	All respondents	
	2002-03	2003-04	2002-03	2003-04	2002-03	2003-04
Sample size	N=29	N=159	N=189	N=178	N=218	N=337
Yes	45%	42%	39%	38%	40%	40%
No	55%	52%	53%	53%	54%	53%
MD	0%	6%	7%	10%	6%	8%

SECTION D
GRAPHS OF SELECTED QUESTIONS ABOUT COLLEGE FROM PARENT SURVEY

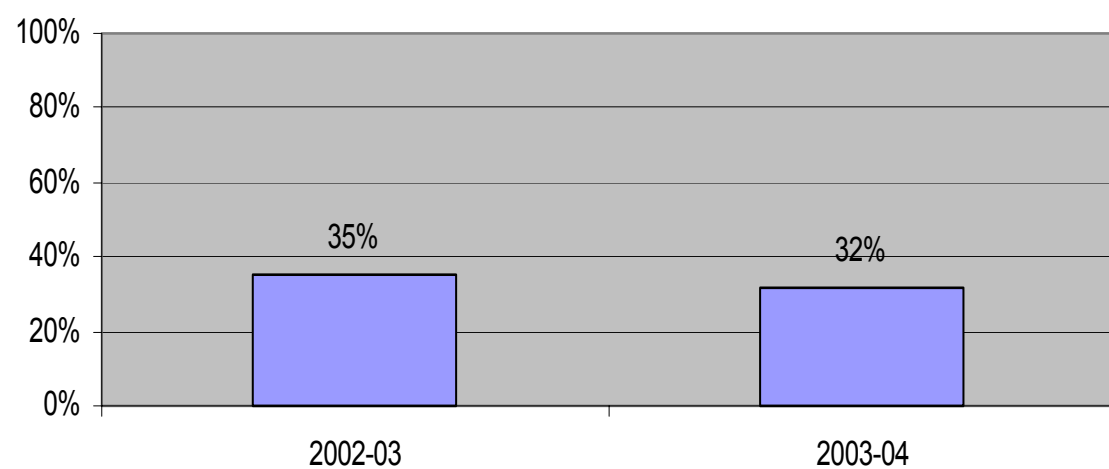
The charts in this section show only “YES” responses for 7th grade class in 2002-2003 as compared to 8th grade class in 2003-2004. For complete data related to each chart, see SECTION E.



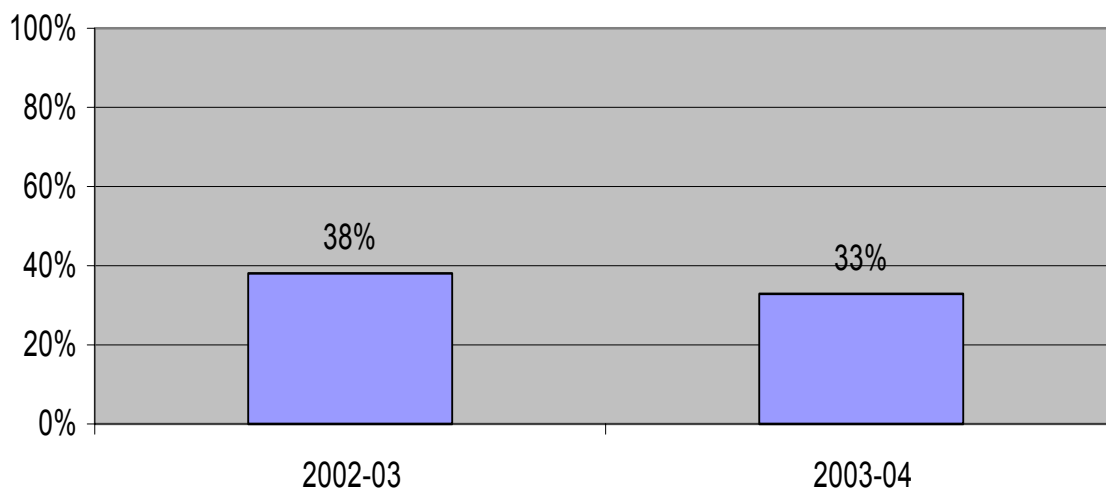
C1. Have you talked with anyone at your child's school about the courses he/she needs to get into college?



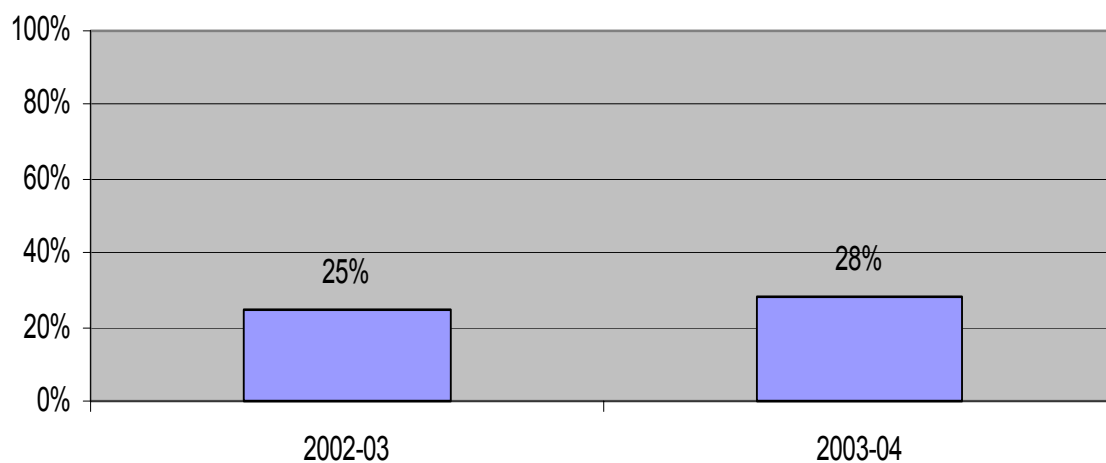
**C2. Are you familiar with entrance requirements for each of these types of schools?
2-year or community colleges**



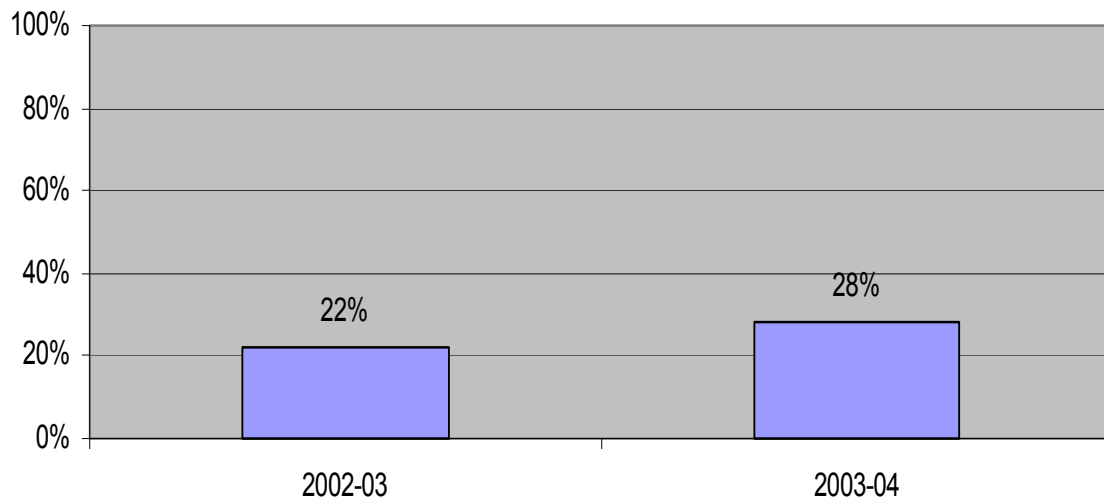
**C2. Are you familiar with the entrance requirements for each of these types of schools?
4-year college or university**



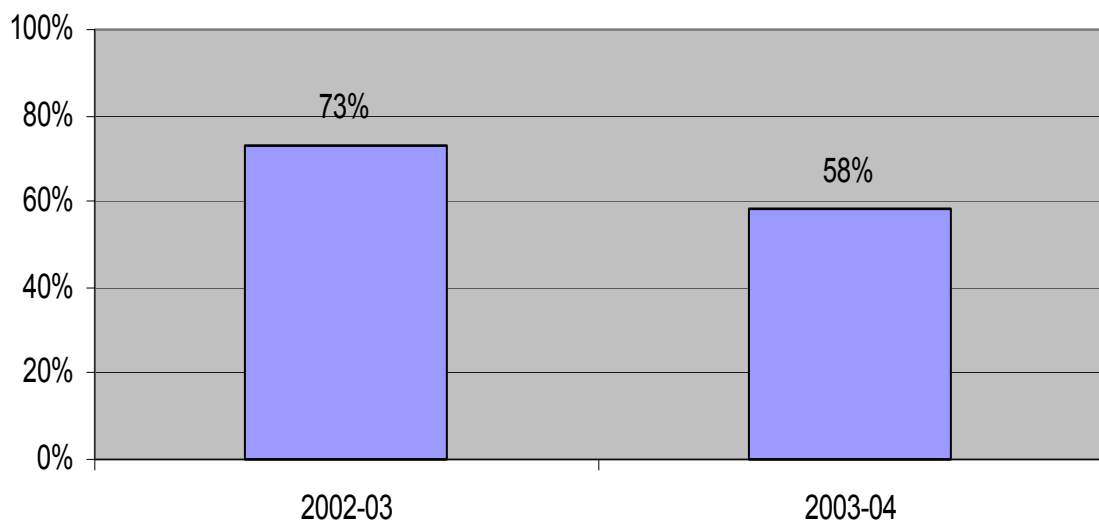
**C2. Are you familiar with the entrance requirements for each of these types of schools?
Vocational, trade or business school**



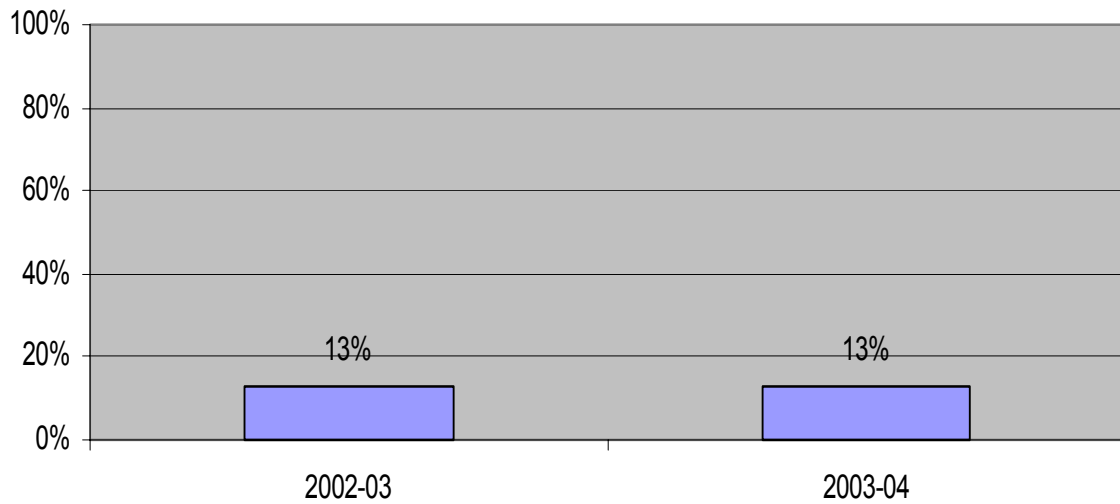
C3 Do you feel you have enough information about what your child needs to do in order to be prepared for college?



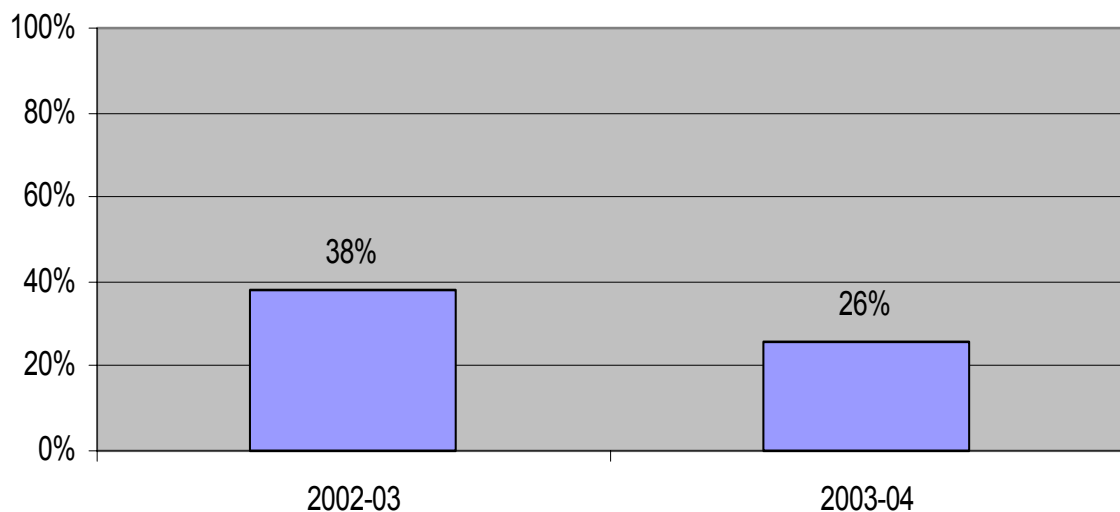
C4. Have you talked with your child about attending college?



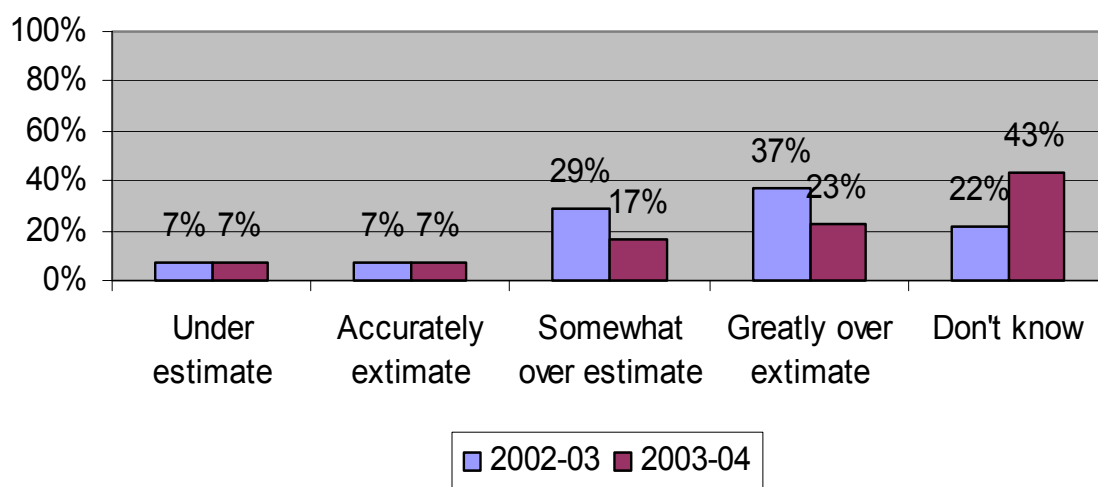
C5. Have you talked with anyone at your child's school about the availability of financial assistance for college?



C6. Have you started saving any money for your child's college education?



C7. How much do you think it costs to attend a 4-year public college in your state for one year (tuition and fees only)?



Note: Under estimates = \$0 - \$3,795
 Accurately estimates = \$3,796 - \$6,140 (2002-03); \$3,796 - \$6,390 (2003-04)
 Somewhat over estimates = \$6,141 - \$19,999 (2002-03); \$6,391 - \$19,999 (2003-04)
 Greatly over estimates = \$20,000+

SECTION E
SELECTED QUESTIONS ABOUT COLLEGE FROM PARENT SURVEY
TREND ANALYSIS
2002-2003 AND 2003-2004

PARENT SURVEY RESULTS OF SELECTED QUESTIONS

A4 .	Have you talked with anyone at your child's school about the courses or grades your child needs in order to graduate from high school?
----------------	---

	6 th grade	7 th grade	7 th grade	8 th grade	All respondents	
	2002-03	2003-04	2002-03	2003-04	2002-03	2003-04
Sample Size	N=8	N=28	N=59	N=60	N=67	N=88
Yes	13%	36%	33%	29%	31%	31%
No	88%	64%	67%	51%	69%	55%
MD	0%	0%	0%	20%	0%	14%

A5 .	Do you feel <u>you</u> have enough information about the graduation requirements for high school?
----------------	--

	6 th grade	7 th grade	7 th grade	8 th grade	All respondents	
	2002-03	2003-04	2002-03	2003-04	2002-03	2003-04
Sample Size	N=8	N=28	N=59	N=60	N=67	N=88
Yes	63%	46%	45%	33%	47%	37%
No	38%	54%	53%	45%	52%	47%
MD	0%	0%	2%	22%	2%	16%

C1.	Have you talked with anyone at your child's school about the courses he/she needs to get into college?
------------	---

	6 th grade	7 th grade	7 th grade	8 th grade	All respondents	
	2002-03	2003-04	2002-03	2003-04	2002-03	2003-04
Sample Size	N=8	N=28	N=59	N=60	N=67	N=88
Yes	25%	11%	17%	21%	18%	18%
No	75%	89%	83%	62%	82%	69%
MD	0%	0%	0%	17%	0%	13%

C2.As you may know, there are three basic types of postsecondary institutions. Are you familiar with the entrance requirements for each of these types of schools?

2-year or community colleges	6 th grade	7 th grade	7 th grade	8 th grade	All respondents	
	2002-03	2003-04	2002-03	2003-04	2002-03	2003-04
Sample Size	N=8	N=28	N=59	N=60	N=67	N=88
Yes	63%	36%	35%	32%	38%	33%
No	25%	54%	58%	46%	54%	48%
MD	13%	11%	7%	22%	7%	19%

4-year college or university	6 th grade	7 th grade	7 th grade	8 th grade	All respondents	
	2002-03	2003-04	2002-03	2003-04	2002-03	2003-04
Sample Size	N=8	N=28	N=59	N=60	N=67	N=88
Yes	75%	43%	38%	33%	43%	36%
No	13%	43%	60%	43%	54%	43%
MD	13%	14%	2%	24%	3%	21%

Vocational, trade or business school	6 th grade	7 th grade	7 th grade	8 th grade	All respondents	
	2002-03	2003-04	2002-03	2003-04	2002-03	2003-04
Sample Size	N=8	N=28	N=59	N=60	N=67	N=88
Yes	63%	36%	25%	28%	29%	30%
No	25%	54%	70%	47%	65%	49%
MD	13%	11%	5%	25%	6%	21%

C3.Do you feel you have enough information about what your child needs to do in order to be prepared for college?

	6 th grade	7 th grade	7 th grade	8 th grade	All respondents	
	2002-03	2003-04	2002-03	2003-04	2002-03	2003-04
Sample Size	N=8	N=28	N=59	N=60	N=67	N=88
Yes	50%	21%	22%	28%	25%	26%
No	50%	71%	78%	53%	75%	58%
MD	0%	7%	0%	20%	0%	16%

C4.Have you talked with your child about attending college?

	6 th grade	7 th grade	7 th grade	8 th grade	All respondents	
	2002-03	2003-04	2002-03	2003-04	2002-03	2003-04
Sample Size	N=8	N=28	N=59	N=60	N=67	N=88
Yes	88%	64%	73%	58%	75%	60%
No	13%	36%	27%	24%	25%	27%
MD	0%	0%	0%	18%	0%	14%

C5. Have you talked with anyone at your child's school about the availability of financial assistance for college?

	6 th grade	7 th grade	7 th grade	8 th grade	All respondents	
	2002-03	2003-04	2002-03	2003-04	2002-03	2003-04
Sample Size	N=8	N=28	N=59	N=60	N=67	N=88
Yes	13%	4%	13%	13%	13%	11%
No	88%	93%	87%	68%	87%	75%
MD	0%	4%	0%	18%	0%	14%

C6. Have you started saving any money for your child's college education?

	6 th grade	7 th grade	7 th grade	8 th grade	All respondents	
	2002-03	2003-04	2002-03	2003-04	2002-03	2003-04
Sample Size	N=8	N=28	N=59	N=60	N=67	N=88
Yes	88%	43%	38%	26%	44%	31%
No	13%	54%	55%	53%	50%	53%
MD	0%	4%	7%	21%	6%	16%

C7.How much do you think it costs to attend a 4-year public college in your state for one year (tuition and fees only)?

4-year public college \$ _____

	2003					2004		
Cost	6 th grade	7 th grade	All respondents		Cost	7 th grade	8 th grade	All respondents
\$0 - \$99	0%	1.7%	1.5%		\$0 - \$99	0%	0%	0%
\$100 - \$999	0%	0%	0%		\$100 - \$999	0%	3.9%	3%
\$1000 - \$3795	0%	5.1%	4.5%		\$1000 - \$3795	0%	2.6%	1.9%
\$3796 - \$6140	0%	6.7%	5.9%		\$3796 - \$6390	10.7%	7.2%	9.6%
\$6141 - \$9999	0%	6.7%	5.9%		\$6390 - \$9999	0%	6.6%	4.8%
\$10000 - \$19999	37.5%	21.8%	23.6%		\$10000 - \$19999	14.4%	10.5%	11.7%
\$20000 - \$29999	12.5%	13.3%	13.2%		\$20000 - \$29999	7.1%	7.8%	7.7%
\$30000 - \$49999	0%	8.4%	7.4%		\$30000 - \$49999	7.2%	1.3%	2.9%
\$50000 - \$99999	25.0%	8.4%	10.3%		\$50000 - \$99999	17.9%	5.2%	8.7%
\$100000 +	12.5%	6.7%	7.4%		\$100000 +	10.8%	9.1%	9.8%
MD	12.5%	21.7%	20.6%		MD	32.1%	43.4%	40.4%

There are two 4-year public colleges in the state of Delaware. The shaded area indicates students who came within \$500 of the annual cost of a 4-year public college in Delaware. Tuition and fees for the University of Delaware were \$5,640 per year for the 2002-2003 school year and \$5,890 for the 2003-2004 school year. Delaware State University costs \$4,296 per year for both of those school years.

SECTION F
COMPLETE RESULTS OF REMAINING QUESTIONS FROM YOUTH SURVEY
2003-2004

YOUTH SURVEY RESULTS OF REMAINING QUESTIONS

B1. How important to you is what each of the following people think you should do about your education?

	7 th grade				8 th grade				All respondents			
	Not important	Somewhat important	Very Important	MD	Not important	Somewhat important	Very Important	MD	Not important	Somewhat important	Very Important	MD
Parent(s) or Guardian(s)	1%	5%	94%	0%	2%	12%	85%	0%	2%	9%	89%	0%
Teacher(s)	4%	31%	62%	3%	7%	42%	51%	1%	6%	37%	56%	2%
Guidance Counselor(s)	15%	38%	41%	6%	14%	47%	37%	2%	15%	43%	39%	4%
GEAR UP staff	15%	35%	42%	8%	22%	43%	30%	6%	19%	39%	36%	7%
Some other person	13%	11%	43%	33%	16%	11%	25%	48%	15%	11%	33%	41%

B2. Who usually helps you with your homework?

	7 th grade			8 th grade			All respondents		
	Yes	No	MD	Yes	No	MD	Yes	No	MD
A teacher at your school	60%	33%	8%	38%	53%	9%	48%	44%	8%
A GEAR UP tutor	16%	75%	9%	13%	76%	11%	14%	76%	10%
A GEAR UP mentor	11%	79%	10%	7%	82%	12%	9%	80%	11%
Your mother, father or guardian	79%	17%	4%	69%	28%	4%	73%	23%	4%
Your brother or sister	36%	57%	7%	35%	56%	8%	36%	57%	8%
Another family member	58%	33%	9%	37%	53%	10%	47%	44%	10%
A classmate or friend	64%	27%	9%	62%	32%	6%	63%	30%	8%
Some other person	22%	30%	48%	15%	24%	61%	18%	27%	55%

B3. Compared with other students, how hard do you think you work in school?

	7 th grade	8 th grade	All respondents
Much harder	29%	18%	23%
Harder	31%	36%	34%
About the same	28%	35%	32%
Not as hard	7%	10%	8%
Much less hard	2%	1%	2%
MD	3%	1%	2%

B4. What kinds of grades do you get on your grade report?

	7 th grade	8 th grade	All respondents
Mostly A's	18%	22%	20%
About half A's and half B's	31%	30%	31%
Mostly B's	13%	13%	13%
About half B's and half C's	24%	24%	24%
Mostly C's	2%	3%	3%
About half C's and half D's	9%	6%	7%
Mostly D's	1%	1%	1%
Mostly below D	3%	1%	2%
MD	1%	1%	1%

D3. From whom do you get most of your information about your options for continuing your education after high school?

	7 th grade	8 th grade	All respondents
I don't get information from anyone	10%	12%	11%
Parent(s) or Guardian(s)	62%	51%	56%
Brother(s) or Sister(s)	5%	8%	7%
Guidance Counselor	1%	12%	7%
Teacher(s)	12%	12%	12%
Friend(s)	4%	1%	2%
Books/Internet/TV	2%	3%	3%
Someone else	4%	2%	3%
MD	0%	0%	0%

D4. How far in school do you think you will get?

	7 th grade	8 th grade	All respondents
Less than high school	2%	4%	3%
High school diploma/GED	20%	14%	16%
AA or Associates degree	13%	10%	11%
BA or Bachelor's degree or higher	46%	52%	49%
Don't know	19%	20%	19%
MD	1%	1%	1%

D5. What is the main reason you would not continue your education after high school?

	7 th grade	8 th grade	All respondents
I plan to continue for sure	57%	49%	53%
It costs too much or I cannot afford it	10%	26%	18%
I need or want to work	8%	8%	8%
My grades are not good enough	6%	3%	5%
I'm just not interested	4%	3%	4%
I want to join the military service	4%	4%	4%
I want to start a family or I need to take care of my family	4%	2%	3%
Some other reason.	3%	1%	2%
MD	4%	3%	4%

E1. How much education do you think your parent(s) or guardian(s) want you to get?

	7 th grade		8 th grade		All respondents	
	Father (or male guardian)	Mother (or female guardian)	Father (or male guardian)	Mother (or female guardian)	Father (or male guardian)	Mother (or female guardian)
Does not apply	8%	3%	6%	2%	7%	2%
Less than high school education	3%	2%	3%	3%	3%	3%
High school graduation only	9%	4%	11%	12%	10%	8%
AA or associates degree	16%	13%	10%	10%	13%	11%
BA or Bachelor's degree or higher	57%	73%	59%	65%	58%	69%
MD	7%	5%	11%	8%	9%	7%

E2. Did any of your family members attend or get a college degree?

	7 th grade				8 th grade				All respondents			
	Yes	No	Not sure	MD	Yes	No	Not sure	MD	Yes	No	Not sure	MD
Mother or female guardian	42%	33%	16%	9%	41%	35%	17%	7%	41%	34%	17%	8%
Father or male guardian	28%	30%	26%	16%	28%	39%	22%	11%	28%	35%	24%	13%
Brother(s) or sister(s)	16%	59%	6%	18%	21%	49%	13%	17%	19%	54%	10%	18%
Grandparent(s)	32%	11%	41%	16%	24%	25%	38%	14%	28%	18%	39%	15%

F1. Overall, how much would you say you participate in the GEAR UP program?

	7 th grade	8 th grade	All respondents
Always <u>or</u> Almost always	9%	7%	8%
Most of the time	11%	11%	11%
About half the time	12%	7%	10%
Sometimes	21%	22%	21%
Never <u>or</u> Almost never	43%	52%	48%
MD	4%	1%	2%

F2. During the past school year, how often did you attend each of the following types of activities provided by the GEAR UP program?

	All respondents						
	Everyday	Frequently	Occasionally	A few times	Did not attend	Did not know about it	MD
a. Any kind of tutoring	4%	7%	7%	15%	39%	20%	9%
b. Computer assisted lab, any type	4%	4%	4%	5%	49%	25%	9%
c. Mentoring	2%	4%	4%	5%	52%	20%	15%
d. Attended class at a college	2%	1%	2%	1%	53%	29%	13%
e. Any type of counseling/advising	3%	3%	5%	5%	52%	24%	10%
f. Attending any workshop	3%	5%	3%	5%	50%	23%	11%
g. Visits such as college, job site or other types	4%	4%	3%	6%	48%	26%	10%
h. Shadowing	2%	2%	3%	3%	51%	28%	11%
i. Attending a cultural event	4%	2%	4%	6%	48%	26%	12%
j. GEAR UP family activity	4%	4%	5%	7%	44%	21%	15%

F3. Overall, how satisfied are you with the GEAR UP program?

	7 th grade	8 th grade	All respondents
Very Satisfied	26%	17%	21%
Satisfied	33%	49%	42%
Dissatisfied	8%	7%	7%
Very dissatisfied	11%	10%	10%
MD	23%	18%	20%

F4. Specify any Gear Up services you might be dissatisfied with. (N=15)

The program is unorganized
The hour for Gear Up are not good
Too much work
Dissatisfied with specific subjects
They don't inform people about the program

F5. Has being in the GEAR UP program changed your plans about going to college?

	7 th grade	8 th grade	All respondents
Yes	21%	27%	24%
No	57%	56%	56%
MD	22%	17%	20%

F8. IF THE PROGRAM HAS CHANGED YOUR PLANS, what was the biggest factor?

	7 th grade	8 th grade	All respondents
My plans have not changed	40%	47%	44%
Information about financial aid and how much college costs	7%	8%	7%
Information about the benefits of going to college	8%	6%	7%
Tutoring or help with school work	4%	2%	4%
Mentoring	2%	1%	1%
Visits to college campus	4%	2%	3%
New information about careers	2%	8%	5%
Other	2%	1%	2%
MD	30%	24%	27%

F10. How would you rate your academic performance since participating in GEAR UP?

	7 th grade	8 th grade	All respondents
Better	33%	25%	29%
About the same	27%	35%	31%
Worse	1%	5%	3%
Not sure	18%	17%	17%
MD	22%	17%	20%

SECTION G
COMPLETE RESULTS OF REMAINING QUESTIONS FROM PARENT SURVEY
2003-2004

PARENT SURVEY RESULTS OF REMAINING QUESTIONS

A1. What type of student do you consider your child? Think about your child's academic performance in school and his or her study habits.

	7 th grade	8 th grade	All respondents
Excellent	18%	29%	26%
Good	50%	40%	42%
Fair	32%	13%	18%
Poor	0%	1%	1%
MD	0%	17%	13%

A2. How often do you attend activities or events at your child's school?

	7 th grade	8 th grade	All respondents
Frequently	14%	22%	20%
Occasionally	46%	29%	34%
Seldom	29%	25%	26%
Never	7%	5%	6%
MD	4%	18%	14%

A3. What kinds of grades does your child get on his/her grade report?

	7 th grade	8 th grade	All respondents
Mostly A's	18%	21%	20%
About half A's and half B's	25%	34%	32%
Mostly B's	21%	7%	11%
About half B's and half C's	25%	12%	15%
Mostly C's	4%	1%	2%
About half C's and half D's	7%	5%	6%
Mostly D's	0%	1%	1%
Mostly below D	0%	0%	0%
MD	0%	18%	14%

B1. Who provides your child with information about options for continuing his or her education after high school?

	7 th grade			8 th grade			All respondents		
	Yes	No	MD	Yes	No	MD	Yes	No	MD
Myself	82%	4%	14%	65%	15%	21%	69%	12%	19%
Sibling(s)	61%	18%	21%	45%	17%	38%	49%	17%	34%
Other family members	32%	39%	29%	18%	40%	42%	22%	39%	39%
Teacher(s) at school	61%	14%	25%	51%	16%	33%	54%	15%	31%
Coach at school	7%	46%	46%	8%	45%	47%	8%	45%	47%
Other school staff	39%	25%	36%	29%	32%	40%	32%	30%	39%
His or her friend(s)	29%	36%	36%	22%	38%	40%	24%	38%	39%
GEAR UP tutor	25%	39%	36%	26%	30%	43%	26%	33%	41%
GEAR UP mentor	14%	39%	46%	22%	32%	46%	20%	34%	46%
Other GEAR UP staff	18%	32%	50%	24%	32%	45%	22%	32%	46%
Someone else	7%	32%	61%	11%	30%	59%	4%	37%	60%
Don't know	7%	29%	64%	1%	37%	62%	3%	35%	63%

B2. How far in school would you like to see your child go?

	7 th grade	8 th grade	All respondents
Less than high school	0%	0%	0%
High school	11%	8%	9%
Associate's degree	11%	11%	11%
Bachelor's degree or higher	75%	54%	60%
Don't know	4%	11%	9%
MD	0%	17%	13%

B3. If your child does not continue his or her education after high school, what would be the main reason?

	7 th grade	8 th grade	All respondents
He/she will continue for sure	50%	36%	39%
It costs too much or cannot afford it	25%	21%	22%
He/she needs or wants to work	0%	5%	4%
His/her grades are not good enough	0%	5%	4%
He/she is not interested	11%	12%	12%
He/she wants to join the military service	0%	0%	0%
He/she wants to start a family or needs to take care of his/her family	4%	0%	1%
It is not necessary for the job he/she wants to do	0%	0%	0%
Some other reason	2%	1%	2%
MD	9%	20%	16%

C8. Have you heard of the following source of money for education beyond high school?

	7 th grade			8 th grade			All respondents		
	Yes	No	MD	Yes	No	MD	Yes	No	MD
Federal Pell grants	50%	46%	4%	36%	42%	22%	39%	43%	17%
Federal student loans	64%	32%	4%	50%	28%	22%	54%	29%	17%
Federal work study	32%	61%	7%	26%	47%	26%	28%	51%	21%
State scholarships	50%	43%	7%	54%	25%	21%	53%	30%	17%
Institutional scholarships	46%	46%	7%	28%	43%	29%	33%	44%	23%
Private or academic scholarships	57%	36%	7%	36%	41%	24%	41%	39%	19%
Athletic scholarships	61%	32%	7%	51%	26%	22%	54%	28%	18%

C9. Do you think your child is likely to qualify for enough of the above sources of financial assistance to attend college?

	7 th grade	8 th grade	All respondents
Yes	29%	30%	30%
No	14%	9%	11%
Don't know	57%	42%	46%
MD	0%	18%	14%

C10. Do you think you and/or your child would be able to afford to send him/her to a 4-year public college or university after high school?

	7 th grade	8 th grade	All respondents
Definitely	18%	17%	17%
Probably	36%	21%	25%
Not sure	25%	20%	21%
I doubt it	18%	12%	14%
Definitely not	4%	11%	9%
MD	0%	20%	14%

D1. Do you feel the activities in your school are helping your child prepare to go to college after high school?

	7 th grade	8 th grade	All respondents
Yes	57%	58%	58%
No	7%	3%	4%
Don't know	11%	1%	4%
Child is not going to college	18%	15%	15%
MD	7%	24%	19%

D4. Which of the following types of GEAR UP events have you attended?

	7 th grade				8 th grade				All respondents			
	Attended	Did not attend	Not offered	MD	Attended	Did not attend	Not offered	MD	Attended	Did not attend	Not offered	MD
Workshop on types of financial aid available	7%	29%	54%	11%	11%	40%	24%	26%	10%	37%	32%	22%
Workshop on filling out the federal financial aid forms (also known as FAFSA)	4%	32%	50%	14%	5%	37%	28%	30%	5%	36%	34%	26%
Workshop on preparing your child for college	7%	25%	50%	18%	18%	32%	20%	30%	15%	30%	28%	27%
Workshop on career opportunities	7%	29%	46%	18%	17%	33%	20%	30%	14%	32%	27%	27%
Some other workshop	21%	25%	36%	18%	11%	36%	22%	32%	14%	33%	26%	28%
Visited a college	4%	36%	43%	18%	5%	38%	26%	30%	5%	38%	31%	27%
Attended a cultural event	4%	39%	39%	18%	12%	33%	25%	30%	10%	35%	29%	27%
Some other type of activity	14%	32%	36%	18%	16%	26%	28%	30%	15%	28%	30%	27%
Attended some other GEAR UP family activity	29%	21%	32%	18%	22%	29%	21%	28%	24%	27%	24%	25%

D3. In general, do you feel that the activities you attended were helpful to you?

	7 th grade	8 th grade	All respondents
Very helpful	11%	28%	23%
Somewhat helpful	36%	22%	26%
Not helpful	7%	9%	9%
MD	46%	41%	42%

D4. IF YOU THINK YOUR CHILD NEEDS ADDITIONAL HELP, What other help do you think your child needs to help him/her for college? (N=27)

Study skills
Help with a particular subject
Financial help
AP/College prep.
Counseling
More help from teachers
Motivation and information
Other

D10. In general, how satisfied are you with the GEAR UP project?

	7 th grade	8 th grade	All respondents
Very satisfied	7%	21%	17%
Satisfied	29%	21%	23%
Dissatisfied	0%	1%	1%
Very dissatisfied	0%	1%	1%
Don't know	46%	22%	29%
MD	18%	33%	29%

E1. What is your highest level of education?

	7 th grade	8 th grade	All respondents
Less than high school diploma	29%	13%	17%
High school diploma	29%	24%	25%
Certificate program (less than 2-year degree)	11%	5%	7%
AA or Associates degree (2-year degree)	11%	5%	7%
BA or Bachelor's degree (4-5 year degree)	11%	16%	14%
Graduate or professional degree	7%	8%	8%
MD	4%	29%	22%

E2. Are there any other adults living in your household?

	7 th grade	8 th grade	All respondents
Yes	71%	46%	53%
No	29%	34%	33%
MD	0%	20%	14%

E3. Is anyone in your family currently attending college?

	7 th grade	8 th grade	All respondents
Yes	21%	20%	20%
No	79%	57%	63%
Not sure	0%	3%	2%
MD	0%	21%	15%

E4. Gender

	7 th grade	8 th grade	All respondents
Male	25%	15%	17%
Female	75%	67%	69%
MD	0%	18%	14%

E5. How do you describe yourself?

	7 th grade	8 th grade	All respondents
American Indian and Alaska Native	0%	0%	0%
Asian	0%	1%	1%
Black or African American	32%	16%	20%
Hispanic or Latino	32%	34%	34%
White	25%	26%	26%
Native Hawaiian or Other Pacific Islander	0%	0%	0%
Bi-racial	4%	2%	3%
MD	7%	20%	16%

Appendix A: Instruments

Appendix B: Sampling Error

In interpreting survey results, one should take into account that all surveys using a sample are subject to sampling error; that is, the extent to which the results may differ from what would be obtained if the entire population of parents had been completed the survey. The size of the sampling error depends largely on the number of parents surveyed. The table below shows how much allowance should be made for the sampling error for this year's parent survey (adapted from the Polling Attitudes of Community on Education Manual, p.5-5).

Amount of Sampling Error in Percentage Points				
at the 95% Confidence Interval Level				
	8 th grade students (n=178)	8 th grade parents (n=60)	7 th grade students (n=159)	7 th grade parents (n=28)
Percentage near 10%	4.5%	7.7%	4.8%	11.3%
Percentage near 20%	6.0%	10.3%	6.3%	15.1%
Percentage near 30%	6.9%	11.8%	6.7%	17.3%
Percentage near 40%	7.3%	12.6%	7.8%	18.5%
Percentage near 50%	7.4%	12.9%	7.9%	18.9%
Percentage near 60%	7.3%	12.6%	7.8%	18.5%
Percentage near 70%	6.9%	11.8%	6.7%	17.3%
Percentage near 80%	6.0%	10.3%	6.3%	15.1%
Percentage near 90%	4.5%	7.7%	4.8%	11.3%

The table would be used in the following way: If the percent of parents that believe the GEAR UP program activities are helping their 7th grade son or daughter prepare to go to college after high school is 78%, we go to the row for "percentages near 80%" in the table. The number at this point is 15.1%, which means that the 78% obtained in the sample is subject to a sampling error of plus or minus 15.1 points. In other words, the odds are 95 in 100 that repeated samplings, using the same procedures and the same sample size, would have an average result somewhere between 62.9 % and 93.1%, with the most likely value being the 78%.