

Drive Carefully
Make Sure That YOU
Avoid An Accident

Month!
ings!
rsary

79c
39c
39c
1.00
47c
59c
39c
25c
23c
45c
65c
73c
61c
45c
3.49
6.85
1.25
99c
25c
1.19
19c
49c
10c
25c
49c
25c
29c
75c
79c
29c
29c
25c
31c
45c
29c
1.19
23c
25c
37c
49c
99c
55c
1.00
99c
39c
39c
65c
6c
6c
6c

THE NEWARK POST

The Newark Post, Newark, Delaware, Thursday, October 14, 1954

For News
Of People You Know
Read The Post

PRICE FIVE CENTS

Increased School Enrollment Warrants Eight New Teachers

Five Additional Elementary, Three Secondary Teachers
Justified For Newark School District With Enrollment
Of 2,979; Board Approves \$1200 Share In New City Main

With a record enrollment of near 3,000 pupils in the special school district, eight more teachers are needed by this increase, School Superintendent Wilmer E. Moore reported at the monthly meeting of the Board of Education last Friday night.

There were 2,979 pupils in the district as of Sept. 30, and one out of seven new pupils is a new enrollee.

Local Police List 550 Calls, Arrest 43 In Past Month

Chief Wm. H. Cunningham
Reports 4,355 Police Car
Miles Of Travel In Sept.

Newark police responded to 550 calls, traveled a total of 4,355 miles, and made 43 arrests during the month of September, according to the report submitted to the Mayor and Council by Wm. H. Cunningham, local Chief of Police.

A total of 13 accidents were investigated, and 12 motorists were arrested for speeding during the month.

Six persons were arrested for disorderly conduct; five arrests were made for drunkenness; and three cases each of reckless driving and driving without an operator's license were reported.

Two motorists were arrested for operating vehicles with improper mufflers; two for failure to observe stop signs; and one arrest was made upon each of the following charges: crossing white line, improper brakes, unsigned registration card, passing a red light, improper passing; passing a stopped school bus; assault and battery, grand larceny, and harboring a barking dog.

Overnight lodging was provided for six persons; five prisoners were committed to the New Castle County Workhouse; three cases were held for Family Court; and one case was held for Superior Court.

Display of Voting Machine Offered Newark Citizens

League Of Women Voters
Provide Demonstrations
At Fader Co. Showroom

A standard voting machine is on display in the Fader Motor Company showroom at 42 West Main Street, and Mrs. A. S. Priestley, voter service chairman for the Newark League of Women Voters has announced that the display will continue until Saturday, Oct. 16.

It had previously been announced that the Department of Elections was calling in all machines for pre-election preparations, leaving only the small models for teaching voters how to cast mechanical ballots. However, the calling-in date was moved up two weeks.

The league is providing volunteers to explain the machine to anyone who comes in while the showroom is open.

A portable model will be used in demonstrations before any organization that requests it between now and Election Day, Mrs. Priestley also announced.

The league has given the city of Newark maps showing boundaries of the new voting districts in this area, and Mayor Wallace M. Johnson announced that one is on public view in the city council office and another in the police station. Anyone who doesn't know where he should register and vote should consult one of these maps, the mayor said.

J. Robert King To Direct Amateur Orchestral Group

A new opportunity for amateur musicians to get together in an orchestral group will be offered this winter.

J. Robert King, conductor of the University of Delaware's band, will organize interested musicians into an orchestra which, for the time being at least, will play strictly for the fun of it.

Sessions will be held at Breck's Mill each Monday night throughout the winter. The mill overlooks the Brandywine River on Breck's Lane, at Henry Clay.

Thirty Newark Plane Spotters To Be Awarded Wings, Oct. 27

Thirty Newark ground observers will receive their Air Force "observer wings" in ceremonies on Wednesday, Oct. 27, at 7:30 p.m. at the National Guard Armory, Delaware Avenue and Academy Streets.

A highlight will be a talk by a jet interceptor pilot from the New Castle County Air Base.

Also on the program will be presenting in ceremonies for a group of volunteers at the Newark Ground Observer Corps post. The unit will be administered by D. Preston Lee, State Civil Defense Director, who also will present the wings. The latter will go to spotters with ten or more official hours of skywatch duty.

Anyone interested in joining the Newark Post is urged to attend.

Newark Man Dies After 20-Ft. Fall At Yorklyn Mill

George A. Moore, First
Patient Conveyed In New
Ambulance, Dies Thursday

George A. Moore, 76, rigging and iron work contractor, died last Thursday in Wilmington General Hospital as the result of injuries received in a fall on Monday at an old grist mill on Old Snuff Mill Road, Yorklyn.

Mrs. Moore, of 309 East Main Street, Newark, is survived by 78 descendants.

Coroner C. Everett Kelley Said Death Resulted From Internal Injuries, Suffered When He Pitched Forward Into A Hole In The Flooring Of The Old Mill And Fell 20 Feet

After the accident he was taken to his home. A few hours later he was taken to the hospital as the first patient to ride in a new Newark ambulance.

Mr. Moore had operated his rigging and iron work contracting business for a number of years in this area. He also handled jobs in Chester—for the Scott Paper Company—Philadelphia and Baltimore.

Born in Chateaugay, N.Y., he came to Delaware as a young man. He began working in this area as a lineman, and spent more than 50 years in the Newark section.

His wife, Emily Kelley Moore, died in 1936.

Survivors include six daughters, Mrs. Beatrice Hevalow, of Dover, Mrs. Evelyn Sparks, Mrs. Helen Burnham, Mrs. Martha Haas, Mrs. Frances Stephan, and Mrs. Rhoda Thorpe, all of Newark; four sons, Edward, Arthur, John and George A. of Stanton; three sisters, Mrs. Frank Goodchild of Newark, Miss Marian Moore of Chateaugay, and Mrs. Bertha Watson of Brookline, N.H.; 39 grandchildren, and 29 great-grandchildren.

Funeral services were held Monday afternoon in the funeral parlors of R. T. Jones, Newark. Interment was in Newark Cemetery.

Main Street School Plot Landscaping Work Begins

Landscaping operations are underway for the lot in front of the Main Street school administration building, with seeding, sodding, and planting services of the Phillips Nurseries provided by the school's neighbor, the Newark Trust Company.

Physician Opens Offices For New Medical Practice

Dr. Leo F. Sherman, M.D., has opened an office in Newark for general practice of medicine at 94 E. Main Street, with office hours from 1 to 3 and from 6:30 to 8:30 daily except Wednesday, and on Saturdays from 9 to 11 a.m.

Dr. Sherman, 32, graduated from the Medical College of Richmond, Virginia, in 1952, interned for one year at Ohio Valley General Hospital, W.Va., and at the Veterans Hospital in Perry Point, Md., during his second year.

He began his general practice in the coal-mining region near Beckley, W.Va., early in 1953—accepted a position as personnel physician at the Perry Point hospital in December of that same year—and recently resigned from that post to come to Newark.

Dr. Sherman, who is unmarried, served with the U.S. Sixth Army Group in the European theater from 1943 to 1946. He is a native of Buffalo, N.Y.

High School Staff Named For Yearbook Publication

Alice Amoroso, Newark High School senior, was elected editor of the yearbook "Kraen" at a meeting held at school this week.

Other staff members are Ginger Lanier and Floyd Bullock, associate editors; Suzanne Schaal, Sandy Capel, Barbara McMillan, Grace Miller and Joan Mowll, literary; Barbara Neas, Carolyn Jones, Nancy Hopkins and Edith Streets, make-up.

Art and photography are under the direction of Suzanne Adams, Margaret Case, June Hawkins and Barbara Link, while Joan Rose, Ronald Mayer, Pat Barnes and Betty Jane Zittel are business managers. Stanley Gibbs, of the school faculty, sponsors the yearbook.

In The Good Old Summertime



A flashback to summer activities conducted by the Newark Recreation Association, shows youngsters enjoying the wading pool at George Read Village. School activities and anticipated cool weather have ended scheduled wading for the small fry who were supervised daily by the NRA's summer staff. As a member of the United Community Fund of Northern Delaware, the Newark Recreation Association will share in receipts from the current Red Feather campaign.

REGISTER SATURDAY: Final registrations for eligibility to vote in the November national election, will be accepted this Saturday, Oct. 16 at the following registration places for residents of the Newark area:

Mill Creek Hundred, District No. 3—Whiteman's Garage.
White Clay Creek Hundred, Dist. 1—Fader's Garage; Dist. 2, Davis' Cleveland Avenue Store; Dist. 3, Christiana Firehouse; Dist. 4, Rittenhouse Garage; Dist. 5, Mackenzie - Strickland Garage.
Elkton Rd.; Dist. 6, Towne Cleaners; Dist. 7, American Legion, George Read Village; Dist. 8, Capitol Trail and Ogletown Road corner residence; Dist. 9, 1020 Marrow Road, Brookside.
Residents of Pencader Hundred may register at Brooks Store, Glasgow, Dist. 1; Conner's Market, Glasgow, Dist. 2; Brookside School, Dist. 3; Diamond Service Station, South Chapel and Chestnut Hill Road; Dist. 4, and Day-ett's Mill, Coach's Bridge, Dist. 5.
Registration hours are from 8 a.m. to noon, and from 1 p.m. to 7 p.m.

MIG Pilot, Guest At Rotary Club's Monday Meeting

Dean Carl Rees Talks On
American Foreign Policy
Middle East Troublespot

Kum Sok No, former senior lieutenant in the North Korean air force who flew his MIG jet fighter to freedom last year, was a guest at the Newark Rotary Club dinner in the College Inn on Monday night.

Dr. Carl J. Rees, dean of the University's summer school, gave a talk on American foreign policy. Dr. Rees cited three main tenets of the idealistic approach based on the Golden Rule and the desire to share know-how; the approach based on the realization that America cannot stand alone against the Communist one-third of the world, and the more specific approach that calls for containing communism or pushing it back.

The world's troublespot is the Middle East, Dr. Rees said, because that is the only land frontier of Russia that is not protected by Red buffer states. For that reason, he said, next year's summer school will focus on the current interest and problems of Eastern Afghanistan, Iran, and the Arab lands.

School To Conduct Adult November Evening Classes

Registrations for adult evening classes to begin in November will be taken at the Main Street school administration building from 7:30 to 9 p.m. on Monday, Oct. 25.

Classes will be offered in driver training, typing, arts and crafts, "Do-it-yourself" woodworking, and in home management.

Classes will be conducted by members of the Newark public school faculty, with 15 participants required for the formation of each class.

Additional fields of interest may be offered if sufficient interest has registered. School authorities have stated, a nominal fee will be charged at the time of registration.

Brookside Toastmasters Hold Regular Meetings

A toastmasters' club is being organized in Brookside to aid members master public speaking, to teach them to appear effectively before any audience, to train them for leadership in meetings of all kinds, and to correlate toastmaster training with job training.

Several meetings have already been held by prospective toastmasters. Weekly Monday meetings will continue at the home of Harry Kaley, 14 Marlboro Drive, until further notice.

Telephone Company Warns Of Fake Collection Agent

The Diamond State Telephone Company has warned Delaware residents of an impostor pretending to be a collection agent for the company who has been collecting money from households after promising to have telephone service installed.

The man is about 30 years old, the company said, and is about 5 feet, 10 inches tall, and has a dark mustache.

Albert E. Rose, district manager of the telephone company, said the company now has no canvassers selling telephone service.

Burglars Ransack School; Take \$35 In Safe-Cracking

State Police Investigate
Monday Night Burglary At
Medill Elementary School

Burglars broke into the E. Francis Medill elementary school off Capitol Trail Monday night, wrecked a 400-lb safe, and received about \$35 for their efforts.

In fooling the school, police said the thieves caused from \$500 to \$600 damage to the building and contents. The theft was discovered when school opened Tuesday morning.

School authorities reported \$29 stolen from the safe, of which \$25 was change for the cafeteria. The other \$4 was PTA funds. About \$3 in change was stolen from desks in the office and storeroom.

The safe, which is kept in the cafeteria by Mrs. Catheryn Mose, cafeteria manager, and Henry Arnold, janitor. A four-inch hole had been cut in the front door with chisels, police say, which belonged to the school.

Apparently not content with the small amount of money found in the safe, the thieves broke the glass in doors to gain entrance to other rooms and ransacked several desks. The front of a filing cabinet was torn off, but nothing was taken as the cabinet contained records and no money.

When the theft was discovered shortly before school opened, state police were notified immediately. Police said they found several sets of fingerprints on the safe and other clues.

Entrance to the building was gained through a door leading to the boiler room.

Civil Defender

Rudolph S. Johnson, Jr.
The appointment of Rudolph S. Johnson, Jr., 183 South Chapel Street, as chief observer of the Newark Ground Observer Post, was announced today by W. W. Brackin, supervisor.

Dr. Johnson was promoted after amassing a record of 190 official hours of skywatching at the Newark GOC post.

A student at Goldie Beacom School of Business, Mr. Johnson received an award last May from the school for his "outstanding record in public service," in recognition of his work at the Newark GOC post.

Mr. Johnson is enrolled in the school's accounting and business administration course.

Volunteer Leaders Complete 16 Hours Of Scout Training

18 Brownie, Girl Scout
Volunteer Leaders Take
Basic Leadership Work

Eighteen volunteer Brownie and Girl Scout leaders in the Newark area have completed the 16 hours of the basic group leadership course.

Brownie troop leaders are Mrs. Manfield Barrow, Mrs. Robert Blair, Mrs. Robert Dean, Mrs. Ardwin Dolio, Mrs. H. G. Halght, Jr., Mrs. J. Lawrence Hallet, Jr., Mrs. Johnson, Mrs. Robert Lloyd, Mrs. Gerald Miller, Mrs. Elisha Rahn, Mrs. George Robinson, and Mrs. Harrie M. Taft.

New intermediate troop leaders are Mrs. Alden Burnham, Mrs. Arnold Clark, Mrs. Robert Farny, Miss Barbara Ann Oberholzer, Mrs. Howard A. Perry, and Mrs. Harry Rawstrom.

The leaders' course was conducted by Mrs. Edward Hungerford, volunteer trainer, assisted by Mrs. A. Duff, Mrs. Jerome Weinberg, and Mrs. John Eldridge.

Intermediate Girl Scout troop meeting schedules at the New Century Club have been announced by Mrs. A. R. Dunlap, with Troop 63, 12-year-olds, meeting at the New Century Club on Tuesdays at 3:30 p.m. with Mrs. John H. Stiggins, leader.

Organizational meetings for the 10 and 11-year-olds of Fly-Up Troop and Troop 4 will be held this afternoon and tomorrow at 3:30 o'clock in the New Century Club.

Newark Girl Named Editor Of Bucknell U. Yearbook

Miss Marian A. Kennedy of 329 Orchard Road, Newark, was recently named editor-in-chief of the 1955 L'AGENDA, yearbook of Bucknell University.

Miss Kennedy, daughter of Mr. and Mrs. George H. Kennedy, is a senior enrolled in the liberal arts course. She has served as assistant editor and section editor of L'AGENDA.

She is a member of Pi Delta Epsilon, national honorary fraternity, and Bucknell University chapel choir, Independent Women's Council, and the orchestra.

Local AAUW To Hear Talk On "Money Management"

The first general meeting of the local AAUW will be held on Monday, Oct. 25, at 8 p.m. in the Women's Faculty Club, Warner Hall.

Edward P. Neelan, vice president of the Equitable Trust Company, Wilmington, will speak on the topic "Money Management."

One-Way Main Street Traffic Plans To Be Decided Tuesday

State Highway Dept. Proposal For One-Way Traffic
West On Main, East On Delaware Ave. For 6-Mos. Trial
Period To Be Decided At City Council Meeting, Tuesday

The State Highway Department proposal, to regulate traffic one-way west on Main Street to South College Avenue, and one-way east on Delaware Avenue, from South College over the proposed Delaware Avenue extension from South Chapel Street to Tyre Avenue and around George Read Village to Capitol Trail, will be approved or rejected at Tuesday night's regular meeting of the City Council of Newark.

Construction of the Delaware Avenue extension by the Highway Department is proposed to relieve the congested traffic conditions in Newark by providing a thoroughfare for motor vehicles passing through town and at the same time, to improve driving conditions for local townpeople.

Walter B. McKendrick, assistant engineer for the State Highway Department, appeared at the last Council meeting to explain the Highway Department's reasons for requesting one-way traffic regulation with construction of the Delaware Avenue extension, and the proposed alignment of the new street.

Mr. McKendrick explained that the alignment of the Delaware Avenue extension was selected as the most practical from an economic standpoint, involving a minimum amount of property damage.

In reply to one-way traffic regulations, he cited figures compiled by the U.S. Chamber of Commerce in a nation-wide survey, indicating that similar one-way programs had proved generally satisfactory to all concerned.

Six Months' Trial
The State Highway Department intends to begin construction of the Delaware Avenue extension upon approval by the City of Newark for one-way traffic regulations for a trial period of six months.

At the end of the six month period, Mr. McKendrick stated, the City of Newark would be free to regulate traffic in any way it desires.

The proposal for this six-month trial period of one-way traffic routing is presented by the Highway Department in an effort to attain for the City of Newark the benefits anticipated with construction of the Delaware Avenue extension.

Some relief would be obtained with the extended street and two-way traffic, Mr. McKendrick continued, but the Highway Department believes that optimum benefits may be realized only with one-way traffic.

Local merchants, primarily concerned in cases throughout the country where two-way traffic has been re-routed, have not been adversely affected by one-way regulations, the Highway Department representative said. According to the national survey, many merchants and business firms have profited from one-way traffic regulations.

A large attendance of interested citizens is expected at next Tuesday's Council meeting to voice opinions in the matter of the proposed one-way regulation.

Volunteer Firemen Plan Local Parade In Fund Campaign

Aetna Hose, Hook, Ladder
Company To Launch Drive
With Parade On Oct. 22

The annual fund campaign for the maintenance of Newark's volunteer fire department—the Aetna Hose, Hook and Ladder Company—will begin with a parade scheduled to start at 7:30 p.m., Friday, Oct. 22.

Six pieces of fire-fighting equipment, along with the new Aetna ambulance, a marching unit of volunteer firemen, the Aetna Ladies' Auxiliary, the Aetna Band, and state and local dignitaries, will appear in the parade to launch the annual campaign for public contributions.

Fire Chief John C. Cunningham, has announced a goal of \$18,000 established after careful review of operating and maintenance costs by the Aetna budget committee.

The parade will form on Academy Street, in front of the Aetna Hose, Hook and Ladder Company firehouse, and will proceed down Delaware Avenue to South Chapel Street. From Chapel Street, the parade route will be west on Main Street to Capitol Trail, south to Delaware Avenue, and east on Delaware Avenue, back to the firehouse.

A goal of \$15,000 was set for last year's public contribution to maintain Newark's fire protection service, and the increased goal of \$18,000 has been established as the result of community growth, depreciation on the newly purchased ambulance and pump engine, and the need for more fire protection in the Newark area.

Community Nurse Makes 240 Visits During September

Miss Alice H. Leak Lists
Cases, Visits To Ailing
In Area For Last Month

Back in harness after vacation, Miss Alice H. Leak, Newark's Visiting Nurse, reports a total of 240 visits made to those in this area requiring nursing care and instruction during the month of September.

Five heart disease patients required the high total of 41 calls, while five anemia sufferers were visited on 24 occasions.

One victim of multiple sclerosis was attended on 24 visits; one paralytic required 23 visits; and three patients suffering from apoplexy were visited 18 times.

Two cases of arteriosclerosis were recorded, requiring a total of 14 visits, and two diabetes were attended on 11 occasions.

One patient suffering with arthritis was comforted in 12 calls; two kidney disease patients were visited on nine occasions; and two maternity cases received nursing care and instruction in 10 visits.

Of the total 240 calls made by Miss Leak during the past month, 201 visits were made to provide nursing care, while 39 calls were made to give instruction.

Airman Bill Higham Home After 17 Months In Korea

Airman 1/c Wm. C. Higham, Jr., returned home Tuesday night after 17 months of Korean duty.

The airman, who graduated with the Newark High School Class of '52, is enjoying 30-days' leave with his parents in Glasgow before reporting for his new assignment at Nashville, Tenn.

Out of School 20 Years, New Yorker Enrolls As Freshman Chemistry Student

January 14, 1955 will mark the 40th birthday of Richard Herman Berger—and on his birthday, Berger probably will be cramming for his first chemistry examination as a freshman at the University of Delaware.

Twenty years after finishing studies at Anderson School in Staatsburg-on-Hudson, New York, Berger had enrolled at Delaware as a student in chemistry.

A former pharmaceutical worker in New York, he came to Wilmington in 1949. After developing an intense interest in chemistry and medicine, Berger decided to further his training in this area.

Additional credits in algebra and plane geometry were required for college entrance. So several years ago he enrolled for adult night courses in the Wilmington High School, eventually completing the necessary requirements.

A college curriculum might well be expected to be a straddle step for one so long out of school, but not for Berger. The New York native has quietly studied foreign languages, anatomy, physiology, chemistry and allied subjects in his spare moments over the years. His mastery of the German language, in fact, was sufficiently advanced to permit his exemption from freshman German.

Berger anticipated a more difficult period of adjustment to college life than has been the case. Delaware's oldest freshman also expected more variety in course work than he has found. "I explain, he says, "but he explains, have been largely mathematical.

The transplanted New Yorker has vision of continuing his academic work beyond the undergraduate level. His primary interest lies in the field of combustion.

Hard to Understand Freshmen To Benefit From Speech Test

Aware of the importance of good oral communication in the world today, the University of Delaware is giving a speech test to each of the 625 freshmen who entered this fall.

The purpose of the test is to discover those students who are hard to understand because they stutter, lisp, mumble their words, have foreign language involvements, lack of articulation, or other speech difficulties.

On the basis of these tests recommendations will be made to faculty advisers that certain students take courses designed to improve their speech. As a result of these tests the university will have, for the first time, information on how many of its students should be required to improve in their oral communication before they graduate, and what facilities will be required to effect this improvement.

The test consists of a few minutes of conversation about the student's home town, his high school, college interests, or hobbies, and the reading of a prepared selection containing all the sounds of the English language. These are arranged to determine whether or not the student has any trouble making any of the 43 sounds of the language either singly or in combination with other sounds.

The committee on oral and written communications, a standing committee of the university faculty, decided last spring to require the test of all freshmen. The program is being administered by members of the Department of Dramatic Arts and Speech.

Local Merchants, Primarily Concerned In Cases Throughout Country Where Two-Way Traffic Has Been Re-routed, Have Not Been Adversely Affected By One-Way Regulations, The Highway Department Representative Said.

According to the national survey, many merchants and business firms have profited from one-way traffic regulations.

A large attendance of interested citizens is expected at next Tuesday's Council meeting to voice opinions in the matter of the proposed one-way regulation.

Local Merchants, Primarily Concerned In Cases Throughout Country Where Two-Way Traffic Has Been Re-routed, Have Not Been Adversely Affected By One-Way Regulations, The Highway Department Representative Said.

According to the national survey, many merchants and business firms have profited from one-way traffic regulations.

A large attendance of interested citizens is expected at next Tuesday's Council meeting to voice opinions in the matter of the proposed one-way regulation.

Local Merchants, Primarily Concerned In Cases Throughout Country Where Two-Way Traffic Has Been Re-routed, Have Not Been Adversely Affected By One-Way Regulations, The Highway Department Representative Said.

According to the national survey, many merchants and business firms have profited from one-way traffic regulations.

A large attendance of interested citizens is expected at next Tuesday's Council meeting to voice opinions in the matter of the proposed one-way regulation.

Local Merchants, Primarily Concerned In Cases Throughout Country Where Two-Way Traffic Has Been Re-routed, Have Not Been Adversely Affected By One-Way Regulations, The Highway Department Representative Said.

According to the national survey, many merchants and business firms have profited from one-way traffic regulations.

A large attendance of interested citizens is expected at next Tuesday's Council meeting to voice opinions in the matter of the proposed one-way regulation.

Local Merchants, Primarily Concerned In Cases Throughout Country Where Two-Way Traffic Has Been Re-routed, Have Not Been Adversely Affected By One-Way Regulations, The Highway Department Representative Said.

According to the national survey, many merchants and business firms have profited from one-way traffic regulations.

A large attendance of interested citizens is expected at next Tuesday's Council meeting to voice opinions in the matter of the proposed one-way regulation.

Local Merchants, Primarily Concerned In Cases Throughout Country Where Two-Way Traffic Has Been Re-routed, Have Not Been Adversely Affected By One-Way Regulations, The Highway Department Representative Said.

According to the national survey, many merchants and business firms have profited from one-way traffic regulations.

A large attendance of interested citizens is expected at next Tuesday's Council meeting to voice opinions in the matter of the proposed one-way regulation.

Local Merchants, Primarily Concerned In Cases Throughout Country Where Two-Way Traffic Has Been Re-routed, Have Not Been Adversely Affected By One-Way Regulations, The Highway Department Representative Said.

According to the national survey, many merchants and business firms have profited from one-way traffic regulations.

A large attendance of interested citizens is expected at next Tuesday's Council meeting to voice opinions in the matter of the proposed one-way regulation.

Local Merchants, Primarily Concerned In Cases Throughout Country Where Two-Way Traffic Has Been Re-routed, Have Not Been Adversely Affected By One-Way Regulations, The Highway Department Representative Said.

According to the national survey, many merchants and business firms have profited from one-way traffic regulations.

A large attendance of interested citizens is expected at next Tuesday's Council meeting to voice opinions in the matter of the proposed one-way regulation.

Local Merchants, Primarily Concerned In Cases Throughout Country Where Two-Way Traffic Has Been Re-routed, Have Not Been Adversely Affected By One-Way Regulations, The Highway Department Representative Said.

According to the national survey, many merchants and business firms have profited from one-way traffic regulations.

A large attendance of interested citizens is expected at next Tuesday's Council meeting to voice opinions in the matter of the proposed one-way regulation.

Local Merchants, Primarily Concerned In Cases Throughout Country Where Two-Way Traffic Has Been Re-routed, Have Not Been Adversely Affected By One-Way Regulations, The Highway Department Representative Said.

According to the national survey, many merchants and business firms have profited from one-way traffic regulations.

A large attendance of interested citizens is expected at next Tuesday's Council meeting to voice opinions in the matter of the proposed one-way regulation.

Local Merchants, Primarily Concerned In Cases Throughout Country Where Two-Way Traffic Has Been Re-routed, Have Not Been Adversely Affected By One-Way Regulations, The Highway Department Representative Said.

According to the national survey, many merchants and business firms have profited from one-way traffic regulations.

A large attendance of interested citizens is expected at next Tuesday's Council meeting to voice opinions in the matter of the proposed one-way regulation.

Local Merchants, Primarily Concerned In Cases Throughout Country Where Two-Way Traffic Has Been Re-routed, Have Not Been Adversely Affected By One-Way Regulations, The Highway Department Representative Said.

According to the national survey, many merchants and business firms have profited from one-way traffic regulations.

A large attendance of interested citizens is expected at next Tuesday's Council meeting to voice opinions in the matter of the proposed one-way regulation.

Local Merchants, Primarily Concerned In Cases Throughout Country Where Two-Way Traffic Has Been Re-routed, Have Not Been Adversely Affected By One-Way Regulations, The Highway Department Representative Said.

According to the national survey, many merchants and business firms have profited from one-way traffic regulations.

A large attendance of interested citizens is expected at next Tuesday's Council meeting to voice opinions in the matter of the proposed one-way regulation.

Delaware Civil Defense Facts

Seventh In A Civil Defense Series by D. Preston Lee
State Director of Civil Defense

During and immediately after an enemy air attack, each public and private school in Delaware will be a self-contained community, wholly dependent on its own resources and the steadfast courage of its teachers and students.

To be ready for that day, to make sure that there will be level-headed people who will know what to do, to be certain that the children themselves will know what to expect, a Civil Defense training program has been operating in schools throughout the state since 1951 under the over-all direction of Dr. George R. Miller, superintendent of public instruction.

Presbyterians List Brookside Church Interim Officials

United Community Church Sets Up Temporary Group In Organization Plans

An interim church organization has been set up until a permanent organization can be established for the United Presbyterian Community Church at Brookside. At a recent meeting of the temporary church board, composed of church officers and committee chairmen, Rev. Edward Fish, moderator for the board, presented an outline for the interim set-up. George Creighton, chairman of the planning and activities committee, discussed the plan and each committee chairman explained the purpose and work of his committee.

The group elected Sheldon Frey to act as secretary while members of the church board are: Rev. Fish, moderator; Mark Chase, treasurer; William Barry, director of Christian education; Mrs. James Stone, president of the women's missionary organization; Mrs. George Payne, director of music; George Creighton, chairman of planning and activities committee; James Stone, chairman of house and grounds committee; Sheldon Frey, chairman of inter-church liaison; John Dunn and George Payne, chairmen of public relations and ushers.

Rev. Fish announced Sunday that construction of the church on Marrows Road is proceeding rapidly and assurance has been given that the church will be completed by Christmas.

Churchmanship classes for new members began this week at the church manse, 31 Kensington Lane, and will continue for three more weeks. Those who wish to unite with the church are attending a lesson a week at any of the three scheduled hours: Sunday afternoon at 3:30, or Tuesday and Thursday at 8 p.m.

Rev. Fish has chosen "History of the Christian Church" and "History of the United Presbyterian Church" as subjects for his first discussion. In the following weeks, sessions will deal with "Church Doctrine" and "Christian Responsibility."

Soil Conservation Credit Financing Offered Farmers

FHA Loan Service Plan Provides Funds At 5% For Conservation Work

A new type credit for financing soil conservation measures will be available to farmers through a recent amendment to the Water Facilities Act. In addition, loans to develop irrigation systems and farmstead water supplies, previously limited to 17 western states, are extended to the rest of the nation.

The loan services will be available from the Farmers Home Administration, an agency of the U.S. Department of Agriculture. Applications must be made to county offices of FHA. Fred Richards, of Dover, is supervisor of the Delaware Farmers Home Administration.

An outstanding feature of the law is provision for insuring loans made by private lenders. Where insured loans from private sources are not available for approved projects, some direct government loans will be made.

Interest rates for insured loans from private sources will be four percent a year on the unpaid principal, plus an annual loan insurance of one percent. Direct loan interest will be five percent.

Loans can be used, under the amendment, to pay costs of materials, equipment and services directly related to the application or establishment of soil and water conservation practices, water facilities or drainage.

This may include such things as construction or repair of terraces, dikes and ponds, pasture improvement, basic application of lime and fertilizers, and tree planting.

Water facilities that can be financed with these loans include tanks, cisterns, wells, pumping and irrigation equipment and similar facilities.

My Neighbors

By BILL PAULSON



"We decided to take your advice about investing in stocks—so now could you lend us some bread and potatoes?"

This program directly touches every teacher and pupil in the state. Each school is expected to name a Civil Defense director from among its staff. Each school has its own Civil Defense plan.

Monthly Drills

Monthly Civil Defense drills are required. Their purpose is to make sure that each pupil knows where the school's shelter area is located and how to get there quickly from any part of the school. Outside drills also are required, so that children will become accustomed to falling flat and covering their faces when the alert is sounded. School planning even covers details such as directions to janitors for closing down boilers and heating plants during an emergency.

Courses in Civil Defense—stress why preparations are necessary and giving facts on how to prepare are part of the regular curriculum in some schools.

What's more, 90 per cent of the state's approximately 2300 teachers have taken Red Cross first aid courses. Many of them now are due for refresher training. Some high school pupils have undergone junior first aid training.

Evacuation of Schools

Immediately after an air attack, schools would be evacuated and placed at the service of other Civil Defense divisions for use as emergency hospitals, or possible refuge centers.

As with towns and cities, each school is responsible, in large part, for its own Civil Defense planning and training. How well each school faces up to an emergency when it comes, depends on the effectiveness with which it plans and trains now. Another Civil Defense unit which is up to its ears in planning at the moment is the Transportation Division under James E. Burns, superintendent of traffic at the Chrysler Corporation in Newark.

Transportation Problem

In an emergency, quick movements of supplies, heavy equipment, even refugees may be necessary. Where to find the trucks, the rail cars or the ships on short notice?

That will be the unenviable task of the transportation division. To be ready to meet such demands, Mr. Burns and his staff have already made contacts with leading trucking firms in this area. They now have a good idea how many trucks, for instance, would be available on the average on any given day.

A survey of railroad facilities—sidings, loading cranes—also must be made in advance.

There are many other knotty problems. How, for instance, does an off-duty truck driver get from his home to an assembly area if all highway traffic has been temporarily stopped by police? A plan is under study whereby each driver would carry a Civil Defense identification card that would get him through police lines. Working under Mr. Burns and his volunteer staff are men with professional training in the transportation and shipping fields.

The sweetest of all sounds is praise.—Xenophon

Walter R. Campbell

Watchmaker
WATCHES JEWELRY
SALES SERVICE
EXPERT REPAIR
REASONABLE PRICES
South Chapel Ext.
1 mile south of
Brookside—R.D. 1
Phone Newark 4567

SHEET ROCK

HANGING

and

FINISHING

Rodney Jones

R.D. 1 Newark, Del.
Phone 8-8000

Cesspools and Septic

TANKS CLEANED

Orderless Excavating Anywhere

For Guaranteed Lowest Prices

Call

William S. Hickman

Phone West Chester 1454

Wilmington 4-2455

or New Castle 5788

Yes!

PHILCO

FACTORY-SUPERVISED

SERVICEMEN

Repair all makes

all models of

TELEVISION

AND

RADIO

at

McCREA'S

Electronic Repair

716 LEHIGH ROAD

Newark, Del.

Phone NEWARK 5129

PHILCO

Factory-Supervised

Service

Drought Disguised Disease In Ailing Tree Diagnoses

Dry weather often causes confusion about diseases of trees, reminds Dr. John W. Heuberger, extension plant pathologist at the University of Delaware. Many of the disease symptoms of the past two years were caused by the exceedingly dry weather.

Some damage was caused by blight, leafspot and wilt, but in most cases the drying of leaves and damage to twigs can be blamed on the dry weather. This is especially true with older trees and trees nearing maturity.

Other factors which contribute to the weakening of a tree and often cause it to be more susceptible to disease are soil grading, too much competition from other trees, growing too near the street with a limited soil area, air pollution by soot and too much dust.

This is the feeling that gives a man true courage—the feeling that he has a work to do, at all costs; the sense of duty—Charles Kingsley

Ag Engineer Gives Advice On Fencing Installations

There are some tricks to the trade when it comes to putting up wire fences, reminds William Larsen, agricultural engineer at the University of Delaware. Many farmers erect fences with inadequate bracing and stretch and attach the wire improperly.

Strong, long lasting fences depend on the following: posts that will last 20 years or more; heavy, good quality wire; properly located and constructed braces; wire stretched tightly and attached with fast holding staples.

Durable woods such as cedar and locust will last 15 years and longer. Nondurable wood treated with creosote, pentachlorophenol or osmosis salts will last 18 to 20 years.

There are some tricks to the trade when it comes to putting up wire fences, reminds William Larsen, agricultural engineer at the University of Delaware. Many farmers erect fences with inadequate bracing and stretch and attach the wire improperly.

Strong, long lasting fences depend on the following: posts that will last 20 years or more; heavy, good quality wire; properly located and constructed braces; wire stretched tightly and attached with fast holding staples.

Durable woods such as cedar and locust will last 15 years and longer. Nondurable wood treated with creosote, pentachlorophenol or osmosis salts will last 18 to 20 years.

There are some tricks to the trade when it comes to putting up wire fences, reminds William Larsen, agricultural engineer at the University of Delaware. Many farmers erect fences with inadequate bracing and stretch and attach the wire improperly.

Strong, long lasting fences depend on the following: posts that will last 20 years or more; heavy, good quality wire; properly located and constructed braces; wire stretched tightly and attached with fast holding staples.

Durable woods such as cedar and locust will last 15 years and longer. Nondurable wood treated with creosote, pentachlorophenol or osmosis salts will last 18 to 20 years.

There are some tricks to the trade when it comes to putting up wire fences, reminds William Larsen, agricultural engineer at the University of Delaware. Many farmers erect fences with inadequate bracing and stretch and attach the wire improperly.

Strong, long lasting fences depend on the following: posts that will last 20 years or more; heavy, good quality wire; properly located and constructed braces; wire stretched tightly and attached with fast holding staples.

Durable woods such as cedar and locust will last 15 years and longer. Nondurable wood treated with creosote, pentachlorophenol or osmosis salts will last 18 to 20 years.

There are some tricks to the trade when it comes to putting up wire fences, reminds William Larsen, agricultural engineer at the University of Delaware. Many farmers erect fences with inadequate bracing and stretch and attach the wire improperly.

Strong, long lasting fences depend on the following: posts that will last 20 years or more; heavy, good quality wire; properly located and constructed braces; wire stretched tightly and attached with fast holding staples.

Durable woods such as cedar and locust will last 15 years and longer. Nondurable wood treated with creosote, pentachlorophenol or osmosis salts will last 18 to 20 years.

There are some tricks to the trade when it comes to putting up wire fences, reminds William Larsen, agricultural engineer at the University of Delaware. Many farmers erect fences with inadequate bracing and stretch and attach the wire improperly.

Strong, long lasting fences depend on the following: posts that will last 20 years or more; heavy, good quality wire; properly located and constructed braces; wire stretched tightly and attached with fast holding staples.

Durable woods such as cedar and locust will last 15 years and longer. Nondurable wood treated with creosote, pentachlorophenol or osmosis salts will last 18 to 20 years.

There are some tricks to the trade when it comes to putting up wire fences, reminds William Larsen, agricultural engineer at the University of Delaware. Many farmers erect fences with inadequate bracing and stretch and attach the wire improperly.

Strong, long lasting fences depend on the following: posts that will last 20 years or more; heavy, good quality wire; properly located and constructed braces; wire stretched tightly and attached with fast holding staples.

Durable woods such as cedar and locust will last 15 years and longer. Nondurable wood treated with creosote, pentachlorophenol or osmosis salts will last 18 to 20 years.

There are some tricks to the trade when it comes to putting up wire fences, reminds William Larsen, agricultural engineer at the University of Delaware. Many farmers erect fences with inadequate bracing and stretch and attach the wire improperly.

Strong, long lasting fences depend on the following: posts that will last 20 years or more; heavy, good quality wire; properly located and constructed braces; wire stretched tightly and attached with fast holding staples.

Durable woods such as cedar and locust will last 15 years and longer. Nondurable wood treated with creosote, pentachlorophenol or osmosis salts will last 18 to 20 years.

There are some tricks to the trade when it comes to putting up wire fences, reminds William Larsen, agricultural engineer at the University of Delaware. Many farmers erect fences with inadequate bracing and stretch and attach the wire improperly.

Strong, long lasting fences depend on the following: posts that will last 20 years or more; heavy, good quality wire; properly located and constructed braces; wire stretched tightly and attached with fast holding staples.

Durable woods such as cedar and locust will last 15 years and longer. Nondurable wood treated with creosote, pentachlorophenol or osmosis salts will last 18 to 20 years.

There are some tricks to the trade when it comes to putting up wire fences, reminds William Larsen, agricultural engineer at the University of Delaware. Many farmers erect fences with inadequate bracing and stretch and attach the wire improperly.

Strong, long lasting fences depend on the following: posts that will last 20 years or more; heavy, good quality wire; properly located and constructed braces; wire stretched tightly and attached with fast holding staples.

Durable woods such as cedar and locust will last 15 years and longer. Nondurable wood treated with creosote, pentachlorophenol or osmosis salts will last 18 to 20 years.

There are some tricks to the trade when it comes to putting up wire fences, reminds William Larsen, agricultural engineer at the University of Delaware. Many farmers erect fences with inadequate bracing and stretch and attach the wire improperly.

Strong, long lasting fences depend on the following: posts that will last 20 years or more; heavy, good quality wire; properly located and constructed braces; wire stretched tightly and attached with fast holding staples.

Durable woods such as cedar and locust will last 15 years and longer. Nondurable wood treated with creosote, pentachlorophenol or osmosis salts will last 18 to 20 years.

There are some tricks to the trade when it comes to putting up wire fences, reminds William Larsen, agricultural engineer at the University of Delaware. Many farmers erect fences with inadequate bracing and stretch and attach the wire improperly.

Strong, long lasting fences depend on the following: posts that will last 20 years or more; heavy, good quality wire; properly located and constructed braces; wire stretched tightly and attached with fast holding staples.

Durable woods such as cedar and locust will last 15 years and longer. Nondurable wood treated with creosote, pentachlorophenol or osmosis salts will last 18 to 20 years.

There are some tricks to the trade when it comes to putting up wire fences, reminds William Larsen, agricultural engineer at the University of Delaware. Many farmers erect fences with inadequate bracing and stretch and attach the wire improperly.

Strong, long lasting fences depend on the following: posts that will last 20 years or more; heavy, good quality wire; properly located and constructed braces; wire stretched tightly and attached with fast holding staples.

Durable woods such as cedar and locust will last 15 years and longer. Nondurable wood treated with creosote, pentachlorophenol or osmosis salts will last 18 to 20 years.

There are some tricks to the trade when it comes to putting up wire fences, reminds William Larsen, agricultural engineer at the University of Delaware. Many farmers erect fences with inadequate bracing and stretch and attach the wire improperly.

Strong, long lasting fences depend on the following: posts that will last 20 years or more; heavy, good quality wire; properly located and constructed braces; wire stretched tightly and attached with fast holding staples.

Durable woods such as cedar and locust will last 15 years and longer. Nondurable wood treated with creosote, pentachlorophenol or osmosis salts will last 18 to 20 years.

There are some tricks to the trade when it comes to putting up wire fences, reminds William Larsen, agricultural engineer at the University of Delaware. Many farmers erect fences with inadequate bracing and stretch and attach the wire improperly.

Strong, long lasting fences depend on the following: posts that will last 20 years or more; heavy, good quality wire; properly located and constructed braces; wire stretched tightly and attached with fast holding staples.

Durable woods such as cedar and locust will last 15 years and longer. Nondurable wood treated with creosote, pentachlorophenol or osmosis salts will last 18 to 20 years.

There are some tricks to the trade when it comes to putting up wire fences, reminds William Larsen, agricultural engineer at the University of Delaware. Many farmers erect fences with inadequate bracing and stretch and attach the wire improperly.

Strong, long lasting fences depend on the following: posts that will last 20 years or more; heavy, good quality wire; properly located and constructed braces; wire stretched tightly and attached with fast holding staples.

Durable woods such as cedar and locust will last 15 years and longer. Nondurable wood treated with creosote, pentachlorophenol or osmosis salts will last 18 to 20 years.

There are some tricks to the trade when it comes to putting up wire fences, reminds William Larsen, agricultural engineer at the University of Delaware. Many farmers erect fences with inadequate bracing and stretch and attach the wire improperly.

Strong, long lasting fences depend on the following: posts that will last 20 years or more; heavy, good quality wire; properly located and constructed braces; wire stretched tightly and attached with fast holding staples.

Durable woods such as cedar and locust will last 15 years and longer. Nondurable wood treated with creosote, pentachlorophenol or osmosis salts will last 18 to 20 years.

There are some tricks to the trade when it comes to putting up wire fences, reminds William Larsen, agricultural engineer at the University of Delaware. Many farmers erect fences with inadequate bracing and stretch and attach the wire improperly.

Strong, long lasting fences depend on the following: posts that will last 20 years or more; heavy, good quality wire; properly located and constructed braces; wire stretched tightly and attached with fast holding staples.

Durable woods such as cedar and locust will last 15 years and longer. Nondurable wood treated with creosote, pentachlorophenol or osmosis salts will last 18 to 20 years.

There are some tricks to the trade when it comes to putting up wire fences, reminds William Larsen, agricultural engineer at the University of Delaware. Many farmers erect fences with inadequate bracing and stretch and attach the wire improperly.

Strong, long lasting fences depend on the following: posts that will last 20 years or more; heavy, good quality wire; properly located and constructed braces; wire stretched tightly and attached with fast holding staples.

The College Inn

SUNDAY SPECIALS

ROAST YOUNG DELAWARE TURKEY
with Pecan Dressing

College Inn's Own Receipt
GENUINE LAMB SHISHKEBAB
with Saffron Rice

LUNCHEON 11-2

DINNER 5-8

SUNDAYS 1 to 7 P.M.

ZEBELDA CARPENTER

MARGARET HUMPHREYS

Proprietors

Buy Now

There is more activity in the market; prices are firming—beat the up-swing, get yours today.

170 SOUTH CHAPEL STREET
Sited zoned commercial—Lot 50x325. 2 story, 7 rooms & bath, basement, garage. Residence at front, business at back—Investigate.

JUST OVER PA. LINE
G.I. possibility with 10% down payment. Brand-new cavity wall brick ranch. 5 rooms, bath & garage; oil hot water. No basement. Includes NEW electric range and refrigerator.

714 SOUTH COLLEGE AVENUE
Available October 15th. All brick. 3 rooms and bath, full basement. Several extras.

85 RITTER LANE
2 story, stucco, 6 rooms and bath, basement, screened porch on shady side. Beautifully landscaped. Appraised for G.I. buyer.

91 RITTER LANE
Can you redecorate a house yourself or do you prefer calling in professional redecorators? The only difference is cost. This home, excellent in room sizes and floor plan: 6 rooms and bath, back screened porch, full, dry basement. Vacant. You can start painting as soon as contract is signed.

328 ORCHARD ROAD
White frame colonial, 2 story, 6 room, 1½ baths. Home in excellent neighborhood. Easy walking distance to new West Park Place School. Even for first grade, no heavy traffic. Well planted shrubs and shade trees. 2 car garage.

LOTS:
Bent Lane—150x150\$6,000
Townsend Road—75x175 irr\$3,000
Kells Ave.—100x130\$2,500
Country—Md. and Pa.\$1,200 & up

RENTALS:
2 Brookside Available Nov. 1st\$100
Coronet Available Oct. 15\$110
Country Bungalow\$ 85

For

"SERVICE THAT IS HONESTLY GOOD"

Call

HANBY - WORRALL

REALTORS

Call Grover Surratt

Newark 2269

Your key
to
friendly
dependable
transportation
in
Wilmington

to efficient transportation

to safe transportation

to convenient transportation

to progressive transportation

to efficient transportation

to safe transportation

to convenient transportation

to progressive transportation

to efficient transportation

to safe transportation

to convenient transportation

to progressive transportation

to efficient transportation

to safe transportation

to convenient transportation

to progressive transportation

to efficient transportation

to safe transportation

to convenient transportation

to progressive transportation

to efficient transportation

to safe transportation

to convenient transportation

to progressive transportation

to efficient transportation

to safe transportation

to convenient transportation

to progressive transportation

to efficient transportation

to safe transportation

to convenient transportation

to progressive transportation

to efficient transportation

to safe transportation

to convenient transportation

Mill Creek Hundred News

Sara Pennington Evans, Correspondent
Phone: Hockessin 7788

November 2 will be election day. Have you registered? People must register if they expect to vote. Everyone these days tends to become lax about feeling the need for electing men and women to manage state and national affairs. Don't forget it's your money that these politicians are spending so be sure to help elect the right persons.

This Saturday is the last date to register. Take time to go to your polling place and see that your name is there. If anyone in the hundred fails to know their polling place or wants a baby-sitter for their children, contact Mrs. L. B. Dunn, Newark 6414 and she will be able to give you this information.

The Waverly Club has resumed its semi-monthly activities. Last Wednesday the club had a dessert meeting at the College Inn, Newark. Mrs. Clarence Fraim of Wilmington was the speaker who talked of and displayed her hobby of crosses. She began her collection when she took trips to Europe, the Holy Land, and other countries and now has 100 religious symbols. The Cross of Damascus is the oldest cross in her possession. She also displayed a virgin's lamp and a temple lamp.

Mrs. Joseph Mitchell read the hymn, "In the Cross of Christ, I Glory." Mrs. Edward Naudan read the club collect. Mrs. Mary M. B. Eastburn, the new president, gave greetings.

Next Wednesday, the club will meet with Mrs. Mabel Cloud near Kennett Square, Pa.

A covered lunch luncheon will precede the October meeting of the Wilmadous Home Demonstration Club next Wednesday at the home of Mrs. Ferris Eastburn at Mermaid. Articles of canned goods for the Home for Aged Women are to be brought at this time.

Corner Ketch
Union Grangers heard a talk on fire prevention last Wednesday by John J. Tull, deputy fire marshal and Fire Chief M. Fred Roser of Hockessin Fire Company. They gave safety rules. A film "Stop Them Before They Start" was shown.

For the program, Miss Imogene Voss, an exchange student, sang in her native tongue, German. Norman Dempsey recited Caesar Rodney's

ride and Mrs. N. Dempsey read some poems.

The grange cleared \$32 at the snack counter at the Connell sale. Mrs. Ralph Endris, home economics chairman, had a skit on the making of a hooked rug by the women members. She also exhibited stuffed toys and dolls.

The grange will hold one social and one business meeting each month. On Nov. 16, this group will go to New London Grange, Pa., for a corn and pie night program.

Harmony School
The third grade visited the home of Mrs. L. H. Pennington at "The Mermaid" to see the historical points about this house which was the Mermaid Tavern. They saw the ballot box used for the entire Mill Creek Hundred in 1859, and the compartment where the mail was kept when Mermaid was a post office.

The annual Halloween party for the Parent-Teacher Association will be held next Wednesday at 7:30 p.m. when prizes will be awarded for costumes.

The school's annual masked party is scheduled for Oct. 29 at 2:30 p.m. for parents and friends. One part of the show will consist of French songs by Fred Craft, exchange student from Belgium.

In addition, the "Bachelors" Joan Rouillon and Carol Ann Thorp—who sang in the spring concert last year, will sing several songs. John Slack will do a comic act.

—Joseph Devonshire

Senior Play
"Girl Crazy," a three act comedy, has been chosen by the Class of '55 to be presented on Nov. 19-20 in the Newark High School auditorium.

Tryouts for the 18 parts were held Monday afternoon and the results will be announced later. Miss Ann Stauter and Miss Janet Groh are co-directors. John Justin is heading the business angle while Miss Jeannette Thoroughgood is taking care of publicity.

Miss Ann Gallagher and Mrs. Mary Bell Pellegre are in charge of house arrangements. Mr. Farney, Mr. Osburn, Mr. Hoffman and Mr. Kent are working on scenery and music is being planned by Mr. Wilder and Miss Cooper.

—Ginger Lanier

Thespians Officers
The National Thespian Society Troop 94 of Newark High School, began its 1954-55 season by electing officers in a meeting held last Friday morning.

Under the direction of Miss Anne Stauter, sponsor, June Hawkins will preside over the group, assisted by Sue Roberts, vice-president; Barbara Link, secretary; and Kathy Lanning, treasurer.

One of the club's projects this year will be redecorating the high school dramatic office. With the aid of a few cans of paint, draperies and a little "elbow grease," they hope to transform the dreary room into a livable place to escape to for studying, part or being other dramatic homework. Later in the year, the group plans to give a three act play.

—Barbara Link

Cheerleaders
Newark High School's cheerleaders have been practicing new routines under Walter Matt's supervision, for the current football season.

Last spring four new girls were chosen from a large group of candidates to represent the school at games. Carol Moore, Peggy Borchardt and Libby Woolleyhan were chosen from the junior class, while Carolyn Chickney was chosen from the sophomore class. Louise Lattomus, class of '55 is captain of the squad.

The group has contributed a few new cheers, which will be taught to the student body in the near future. One of these is as follows:

THE SPELL BEE
Spell "new"—N-E-W
Spell "ark"—A-R-K
That's the way you spell it.
Let's hear you yell it
NEWARK
Hoo Rah Ray!

Veteran members of the squad are Norma Gray, Gail Kauffman, Louise Lattomus and Peggy Young.

—Louise Lattomus
Libby Woolleyhan

Hockey Teams
NHS girls' hockey season officially opened the season with William Penn on the university hockey field.

Mrs. Margaret Reese, physical education teacher, is coaching the local team this year. The girls can be seen drilling and training on the high school hockey field four nights a week. To improve their game, the squad has received 15 new hockey sticks.

Members of the varsity team are Nancy Hopkins, Ginger Lanier, Helen Briggs, Norma Gray, Ann Parsons, Carolyn Chalmers, Dorthea Kakavas, Carol Moore, Edith Streets, Palay Hall, Peggy Borchardt, Carolyn Jones, Susan Handchert, Peggy Young, and Ginny Hurm.

Members of the junior varsity team are Sue Smith, Patry George, Georgianna Gray, Nan Gray, Lorella Lepera, Sandy Panagan, Marie Hein, Nellie Bradford, Ailee Coverdale, Mary Jean Astolfi, Judy Hein, Natalie Bohdan, Sue Gore, Nancy Miruk, Winnie Lind, Connie Parker, and Leona Thompson.

Administrators Move
Wilmer E. Shue, superintendent, Frank Mercer, administrative assistant, Mrs. Clara Truitt, bookkeeper, and Mrs. Elizabeth Young, secretary, moved their offices to the Administrative Building on Main Street recently.

The Main Street Building, formerly used as a grade school, manually training and vocational education center, is the oldest school building in Newark. Recently it has been used as a teen-age center.

The new quarters have meeting rooms for committees as well as storage rooms.

—Roberta Hye

BULL MARKET
Troy Cox, West Grove, Pa., has just purchased the young Guernsey sire, Eden Echo Knight, from John B. McVaugh, Newark.

YELLOWJACKET HIGHLIGHTS

By the Journalism Class

Student Council
Assembly for the installation of Student Council officers was held on Oct. 13 during the senior high assembly.

The order of assembly included remarks by Principal Frederick Kutz; installation of Pat Seni, president; by Mrs. Kutz; installation of other officers by the president; and a pledge by the entire student body.

After the installation Pat Seni discussed the student council motto "Building Citizenship"; followed by Gail Kauffman's talk on "Building Foundations."

Burton Chase then spoke on "Citizenship in School and After Graduation" and John Slack then concluded the program with the subject "Student Council Teaches Citizenship."

—Jean Skold

Variety Show
The 12-D homecoming will present a variety show on Wednesday, Oct. 27 in the high school auditorium.

One part of the show will consist of French songs by Fred Craft, exchange student from Belgium.

In addition, the "Bachelors" Joan Rouillon and Carol Ann Thorp—who sang in the spring concert last year, will sing several songs. John Slack will do a comic act.

—Joseph Devonshire

Senior Play
"Girl Crazy," a three act comedy, has been chosen by the Class of '55 to be presented on Nov. 19-20 in the Newark High School auditorium.

Tryouts for the 18 parts were held Monday afternoon and the results will be announced later.

Miss Ann Stauter and Miss Janet Groh are co-directors. John Justin is heading the business angle while Miss Jeannette Thoroughgood is taking care of publicity.

Miss Ann Gallagher and Mrs. Mary Bell Pellegre are in charge of house arrangements. Mr. Farney, Mr. Osburn, Mr. Hoffman and Mr. Kent are working on scenery and music is being planned by Mr. Wilder and Miss Cooper.

—Ginger Lanier

Thespians Officers
The National Thespian Society Troop 94 of Newark High School, began its 1954-55 season by electing officers in a meeting held last Friday morning.

Under the direction of Miss Anne Stauter, sponsor, June Hawkins will preside over the group, assisted by Sue Roberts, vice-president; Barbara Link, secretary; and Kathy Lanning, treasurer.

One of the club's projects this year will be redecorating the high school dramatic office. With the aid of a few cans of paint, draperies and a little "elbow grease," they hope to transform the dreary room into a livable place to escape to for studying, part or being other dramatic homework. Later in the year, the group plans to give a three act play.

—Barbara Link

Cheerleaders
Newark High School's cheerleaders have been practicing new routines under Walter Matt's supervision, for the current football season.

Last spring four new girls were chosen from a large group of candidates to represent the school at games. Carol Moore, Peggy Borchardt and Libby Woolleyhan were chosen from the junior class, while Carolyn Chickney was chosen from the sophomore class. Louise Lattomus, class of '55 is captain of the squad.

The group has contributed a few new cheers, which will be taught to the student body in the near future. One of these is as follows:

THE SPELL BEE
Spell "new"—N-E-W
Spell "ark"—A-R-K
That's the way you spell it.
Let's hear you yell it
NEWARK
Hoo Rah Ray!

Veteran members of the squad are Norma Gray, Gail Kauffman, Louise Lattomus and Peggy Young.

—Louise Lattomus
Libby Woolleyhan

Hockey Teams
NHS girls' hockey season officially opened the season with William Penn on the university hockey field.

Mrs. Margaret Reese, physical education teacher, is coaching the local team this year. The girls can be seen drilling and training on the high school hockey field four nights a week. To improve their game, the squad has received 15 new hockey sticks.

Members of the varsity team are Nancy Hopkins, Ginger Lanier, Helen Briggs, Norma Gray, Ann Parsons, Carolyn Chalmers, Dorthea Kakavas, Carol Moore, Edith Streets, Palay Hall, Peggy Borchardt, Carolyn Jones, Susan Handchert, Peggy Young, and Ginny Hurm.

Members of the junior varsity team are Sue Smith, Patry George, Georgianna Gray, Nan Gray, Lorella Lepera, Sandy Panagan, Marie Hein, Nellie Bradford, Ailee Coverdale, Mary Jean Astolfi, Judy Hein, Natalie Bohdan, Sue Gore, Nancy Miruk, Winnie Lind, Connie Parker, and Leona Thompson.

Administrators Move
Wilmer E. Shue, superintendent, Frank Mercer, administrative assistant, Mrs. Clara Truitt, bookkeeper, and Mrs. Elizabeth Young, secretary, moved their offices to the Administrative Building on Main Street recently.

The Main Street Building, formerly used as a grade school, manually training and vocational education center, is the oldest school building in Newark. Recently it has been used as a teen-age center.

The new quarters have meeting rooms for committees as well as storage rooms.

—Roberta Hye

BULL MARKET
Troy Cox, West Grove, Pa., has just purchased the young Guernsey sire, Eden Echo Knight, from John B. McVaugh, Newark.

American Chemical Society Schedules First Meeting

The Delaware Section of the American Chemical Society will hold its opening meeting at 8 p.m. Wednesday, Oct. 20, in the Gold Ballroom of the Hotel duPont.

Dr. W. Conrad Fernelius, chairman of the department of chemistry, Pennsylvania State University, will speak on "The Current Activities in the Field of Coordination Compounds."

The meeting will be preceded by a dinner in the duBarry Room of the Hotel duPont.

New Activities
In order to create more interest and meet the demands of all, many of last year's third period clubs and activities have been abolished this year and new ones organized, providing a more versatile activity program for the students at Newark High.

Bookkeeping Club
To give second year bookkeeping students practical experience with the bookkeeping functions of school affairs, Mr. Eugene Smith is sponsoring a bookkeeping club. Members will keep a set of books for all student activities with accounts, count money turned in at the office, keep a record of all receipts and payments, and prepare a financial statement each month concerning individual accounts. Mr. Smith expects at least ten members and hopes that the club will be a great help to both the members and the school.

Recreation Clubs
Taking the place of modern dance this year, Mrs. Margaret Reese hopes to get the interests of more girls through a recreation club. The club will teach the girls dual sports in which two can participate that will be of value to them now and in later life. The first project will be learning the fundamentals of tennis and golf. Mrs. Reese also hopes to train the girls in recreational leaders by teaching them to plan interesting and effective picnics, parties, and other group activities.

Mr. Richard Musselman and Mr. Charles Griffith are sponsoring individual recreation clubs for the boys in grades eleven and twelve and nine and ten respectively which will be for the same purposes as the girls' recreation club. The boys will learn the fundamentals of golf, tennis, chess, and as many more activities as time allows.

—Barbara Link

White Clay Church To Conduct Sunday Anniversary Rites

Services To Observe
230th Anniversary Of Calling First Pastor

Sunday, Oct. 17 will mark the 230th anniversary of the calling of the first pastor to White Clay Creek Presbyterian church.

Historic White Clay church, located on Capitol Trail and Poly Drummond Road, will celebrate this anniversary with appropriate morning and afternoon services.

Organized in 1721, White Clay Creek church is the oldest Presbyterian church in Mill Creek Hundred. The first church building was a log cabin built on top of the hill. One of the officials of the church was Col. Robert Kirkwood an officer in the Revolutionary War, for whom the highway was named.

The 230th anniversary of the first church structure on the present site was celebrated two years ago. The cemetery surrounding the church contains stones of considerable historic interest, including those of Revolutionary War veterans.

Since Sunday will be observed as Laymen's Sunday, the following will participate in the 11 a.m. service: William Peach, scripture; Jane Hammett, responsive reading; Frank Butterworth, prayer; Vernon Davis, litany for laymen; and Hazel Johnston, poem, "The Layman and the Church."

The pastor will bring a message on "When Christ Comes Home," and the choir will sing at both services.

Guest speaker for the informal service at 1:30 p.m. will be the Rev. Dr. Donald Wilson, associate pastor of Westminster Presbyterian church, Wilmington. Dr. Wilson will speak on the theme, "Yesterday Was Today Is, What Will Tomorrow Be?"

At noon a light lunch will be served for members, friends and guests. On the committee arranging for this are Mrs. Atwood Johnston, Improvement Society, Mrs. Raymond Benson, White Clay Fellowship; Mrs. Alfred Deck, Evening Circle; Mrs. Della Othson, Afternoon Circle; and Mrs. Talbert Chalmers, church school.

—Barbara Link

Barbara Link

Landenberg Sewing Group Begins Fall Activities

The Landenberg sewing group with Mrs. Wilson Akerman, leader, held its second meeting at the home of Mrs. James Paxson last week. The following members were present: Mrs. Akerman, Mrs. Cass Beck, Mrs. Helen Conner, Mrs. G. W. Filipi, Mrs. Paxson, Mrs. Charles Shirley, Mrs. Hunter Smith, Mrs. Carl Govilang and Mrs. Alonzo White. The next meeting set for Oct. 19 at Mrs. Paxson's will be from 10 a.m. to 2:45 p.m. when patterns will be fitted and dresses cut and sewn.

The next project, to be started right after Christmas, will be six seasons in slip-cover making, to be followed by upholstery. Miss J. Shirley Timmons, home economist from West Chester extension service, is conducting the course.

NEW SIGMA NU
Charles Sherman Perry, Washington and Lee university freshman from Newark, has been pledged by Sigma Nu, one of 17 national social fraternities on the Washington and Lee campus.

TYSON F. SARTIN
Burial Vaults and Memorials
St. Georges, Del.
Phone - Delaware City 4571
for Consultation or Appointment

Charles Sherman Perry, Washington and Lee university freshman from Newark, has been pledged by Sigma Nu, one of 17 national social fraternities on the Washington and Lee campus.

Charles Sherman Perry, Washington and Lee university freshman from Newark, has been pledged by Sigma Nu, one of 17 national social fraternities on the Washington and Lee campus.

Charles Sherman Perry, Washington and Lee university freshman from Newark, has been pledged by Sigma Nu, one of 17 national social fraternities on the Washington and Lee campus.

Charles Sherman Perry, Washington and Lee university freshman from Newark, has been pledged by Sigma Nu, one of 17 national social fraternities on the Washington and Lee campus.

Charles Sherman Perry, Washington and Lee university freshman from Newark, has been pledged by Sigma Nu, one of 17 national social fraternities on the Washington and Lee campus.

Charles Sherman Perry, Washington and Lee university freshman from Newark, has been pledged by Sigma Nu, one of 17 national social fraternities on the Washington and Lee campus.

Charles Sherman Perry, Washington and Lee university freshman from Newark, has been pledged by Sigma Nu, one of 17 national social fraternities on the Washington and Lee campus.

Charles Sherman Perry, Washington and Lee university freshman from Newark, has been pledged by Sigma Nu, one of 17 national social fraternities on the Washington and Lee campus.

Charles Sherman Perry, Washington and Lee university freshman from Newark, has been pledged by Sigma Nu, one of 17 national social fraternities on the Washington and Lee campus.

Charles Sherman Perry, Washington and Lee university freshman from Newark, has been pledged by Sigma Nu, one of 17 national social fraternities on the Washington and Lee campus.

Charles Sherman Perry, Washington and Lee university freshman from Newark, has been pledged by Sigma Nu, one of 17 national social fraternities on the Washington and Lee campus.

Charles Sherman Perry, Washington and Lee university freshman from Newark, has been pledged by Sigma Nu, one of 17 national social fraternities on the Washington and Lee campus.

Charles Sherman Perry, Washington and Lee university freshman from Newark, has been pledged by Sigma Nu, one of 17 national social fraternities on the Washington and Lee campus.

Charles Sherman Perry, Washington and Lee university freshman from Newark, has been pledged by Sigma Nu, one of 17 national social fraternities on the Washington and Lee campus.

Charles Sherman Perry, Washington and Lee university freshman from Newark, has been pledged by Sigma Nu, one of 17 national social fraternities on the Washington and Lee campus.

Charles Sherman Perry, Washington and Lee university freshman from Newark, has been pledged by Sigma Nu, one of 17 national social fraternities on the Washington and Lee campus.

Charles Sherman Perry, Washington and Lee university freshman from Newark, has been pledged by Sigma Nu, one of 17 national social fraternities on the Washington and Lee campus.

Charles Sherman Perry, Washington and Lee university freshman from Newark, has been pledged by Sigma Nu, one of 17 national social fraternities on the Washington and Lee campus.

Charles Sherman Perry, Washington and Lee university freshman from Newark, has been pledged by Sigma Nu, one of 17 national social fraternities on the Washington and Lee campus.

Charles Sherman Perry, Washington and Lee university freshman from Newark, has been pledged by Sigma Nu, one of 17 national social fraternities on the Washington and Lee campus.

Charles Sherman Perry, Washington and Lee university freshman from Newark, has been pledged by Sigma Nu, one of 17 national social fraternities on the Washington and Lee campus.

Charles Sherman Perry, Washington and Lee university freshman from Newark, has been pledged by Sigma Nu, one of 17 national social fraternities on the Washington and Lee campus.

Charles Sherman Perry, Washington and Lee university freshman from Newark, has been pledged by Sigma Nu, one of 17 national social fraternities on the Washington and Lee campus.

Charles Sherman Perry, Washington and Lee university freshman from Newark, has been pledged by Sigma Nu, one of 17 national social fraternities on the Washington and Lee campus.

Charles Sherman Perry, Washington and Lee university freshman from Newark, has been pledged by Sigma Nu, one of 17 national social fraternities on the Washington and Lee campus.

Charles Sherman Perry, Washington and Lee university freshman from Newark, has been pledged by Sigma Nu, one of 17 national social fraternities on the Washington and Lee campus.

Charles Sherman Perry, Washington and Lee university freshman from Newark, has been pledged by Sigma Nu, one of 17 national social fraternities on the Washington and Lee campus.

Charles Sherman Perry, Washington and Lee university freshman from Newark, has been pledged by Sigma Nu, one of 17 national social fraternities on the Washington and Lee campus.

Charles Sherman Perry, Washington and Lee university freshman from Newark, has been pledged by Sigma Nu, one of 17 national social fraternities on the Washington and Lee campus.

Charles Sherman Perry, Washington and Lee university freshman from Newark, has been pledged by Sigma Nu, one of 17 national social fraternities on the Washington and Lee campus.

Charles Sherman Perry, Washington and Lee university freshman from Newark, has been pledged by Sigma Nu, one of 17 national social fraternities on the Washington and Lee campus.

Charles Sherman Perry, Washington and Lee university freshman from Newark, has been pledged by Sigma Nu, one of 17 national social fraternities on the Washington and Lee campus.

Charles Sherman Perry, Washington and Lee university freshman from Newark, has been pledged by Sigma Nu, one of 17 national social fraternities on the Washington and Lee campus.

Charles Sherman Perry, Washington and Lee university freshman from Newark, has been pledged by Sigma Nu, one of 17 national social fraternities on the Washington and Lee campus.

Charles Sherman Perry, Washington and Lee university freshman from Newark, has been pledged by Sigma Nu, one of 17 national social fraternities on the Washington and Lee campus.

Charles Sherman Perry, Washington and Lee university freshman from Newark, has been pledged by Sigma Nu, one of 17 national social fraternities on the Washington and Lee campus.

Charles Sherman Perry, Washington and Lee university freshman from Newark, has been pledged by Sigma Nu, one of 17 national social fraternities on the Washington and Lee campus.

Charles Sherman Perry, Washington and Lee university freshman from Newark, has been pledged by Sigma Nu, one of 17 national social fraternities on the Washington and Lee campus.

Charles Sherman Perry, Washington and Lee university freshman from Newark, has been pledged by Sigma Nu, one of 17 national social fraternities on the Washington and Lee campus.

Charles Sherman Perry, Washington and Lee university freshman from Newark, has been pledged by Sigma Nu, one of 17 national social fraternities on the Washington and Lee campus.

Charles Sherman Perry, Washington and Lee university freshman from Newark, has been pledged by Sigma Nu, one of 17 national social fraternities on the Washington and Lee campus.

Charles Sherman Perry, Washington and Lee university freshman from Newark, has been pledged by Sigma Nu, one of 17 national social fraternities on the Washington and Lee campus.

Charles Sherman Perry, Washington and Lee university freshman from Newark, has been pledged by Sigma Nu, one of 17 national social fraternities on the Washington and Lee campus.

Charles Sherman Perry, Washington and Lee university freshman from Newark, has been pledged by Sigma Nu, one of 17 national social fraternities on the Washington and Lee campus.

Charles Sherman Perry, Washington and Lee university freshman from Newark, has been pledged by Sigma Nu, one of 17 national social fraternities on the Washington and Lee campus.

Charles Sherman Perry, Washington and Lee university freshman from Newark, has been pledged by Sigma Nu, one of 17 national social fraternities on the Washington and Lee campus.

Charles Sherman Perry, Washington and Lee university freshman from Newark, has been pledged by Sigma Nu, one of 17 national social fraternities on the Washington and Lee campus.

Charles Sherman Perry, Washington and Lee university freshman from Newark, has been pledged by Sigma Nu, one of 17 national social fraternities on the Washington and Lee campus.

Charles Sherman Perry, Washington and Lee university freshman from Newark, has been pledged by Sigma Nu, one of 17 national social fraternities on the Washington and Lee campus.

Charles Sherman Perry, Washington and Lee university freshman from Newark, has been pledged by Sigma Nu, one of 17 national social fraternities on the Washington and Lee campus.

Charles Sherman Perry, Washington and Lee university freshman from Newark, has been pledged by Sigma Nu, one of 17 national social fraternities on the Washington and Lee campus.

Charles Sherman Perry, Washington and Lee university freshman from Newark, has been pledged by Sigma Nu, one of 17 national social fraternities on the Washington and Lee campus.

Charles Sherman Perry, Washington and Lee university freshman from Newark, has been pledged by Sigma Nu, one of 17 national social fraternities on the Washington and Lee campus.

Charles Sherman Perry, Washington and Lee university freshman from Newark, has been pledged by Sigma Nu, one of 17 national social fraternities on the Washington and Lee campus.

Charles Sherman Perry, Washington and Lee university freshman from Newark, has been pledged by Sigma Nu, one of 17 national social fraternities on the Washington and Lee campus.

Charles Sherman Perry, Washington and Lee university freshman from Newark, has been pledged by Sigma Nu, one of 17 national social fraternities on the Washington and Lee campus.

Charles Sherman Perry, Washington and Lee university freshman from Newark, has been pledged by Sigma Nu, one of 17 national social fraternities on the Washington and Lee campus.

Charles Sherman Perry, Washington and Lee university freshman from Newark, has been pledged by Sigma Nu, one of 17 national social fraternities on the Washington and Lee campus.

Charles Sherman Perry, Washington and Lee university freshman from Newark, has been pledged by Sigma Nu, one of 17 national social fraternities on the Washington and Lee campus.

Charles Sherman Perry, Washington and Lee university freshman from Newark, has been pledged by Sigma Nu, one of 17 national social fraternities on the Washington and Lee campus.

Charles Sherman Perry, Washington and Lee university freshman from Newark, has been pledged by Sigma Nu, one of 17 national social fraternities on the Washington and Lee campus.

Charles Sherman Perry, Washington and Lee university freshman from Newark, has been pledged by Sigma Nu, one of 17 national social fraternities on the Washington and Lee campus.

Capitol Trail News

Marjorie M. Bishop, Correspondent
Kirkwood Highway
Phone 6318

Calling all good citizens! Have you registered since Jan. 1, 1954? If not, please do so on Saturday, Oct. 16, at your local registration place.

This is your last opportunity as all registration lists were thrown out by act of legislature, requiring a complete new listing of all voters before the next election.

The League of Women Voters is prepared to help you with information, transportation to registration places, and even with baby-sitting places for small children. There are a number of changes in voting areas. If you are new to this area the League has maps for your guidance.

For general information you may call the president, Mrs. Samuel Handloff, Newark 8-1616 or Mrs. A. S. Priestley, Newark 8-1954.

For information in your locality you may call Mrs. Robert O. Sprague, Limestone Acres, S.C. 3-3230 or Mrs. E. M. Terrill, Capitol Trail, Newark 8-1275.

Personals

Mr. and Mrs. Manlove McMullen, Capitol Trail, returned today from a motor trip to Greenville, S.C., where they visited their son, Manlove, Jr., and his family.

Mrs. Robert B. Stack, of Willow Run, spent the week-end of Sept. 20 visiting her parents, Mr. and Mrs. Edwin Rhodenheiser, Polly Drummond Road.

Mr. and Mrs. Rhodenheiser celebrated their wedding anniversary on Sept. 30.

Mr. and Mrs. John Winter and family of Staten Island, were guests of Mrs. Winter's sister, Mrs. Peter Furness, off Capitol Trail, this past week-end.

Mr. and Mrs. Samuel C. Buckingham, Red Mill Road, spent their past week-end at their cottage in Rehoboth.

Medill Elementary School

What a noisy place this past week! No, not the pupils, but a whole battery of huge graders and dirt diggers lumbering around. Aside from kicking up considerable dust they really are doing a splendid job in preparation for filling in top soil which will be seeded and soded. There are also plans for landscaping with shrubbery.

Elwood Bittenbender, principal, reports that an intra-mural sports

So They Say

HE KICKED LIKE A MULE

but he was finally satisfied at Harvey Refrigeration Co. Hard-to-please people like this find place where your interests prevail.

SALES-INSTALLATION-SERVICE
COMMERCIAL AND
DOMESTIC AIR CONDITIONING & REFRIGERATION
579
27 TYRE AVE.

Edwards' ROOFING

Now Operating Under
My Son
J. R. EDWARDS, JR.

All Kinds of
ROOFING & REPAIRS
GUTTER & SPOUTING
ASBESTOS SIDING

Don't Cuss — Call Us

Phones 6796 — Shop, 7970

SEE US

Newark Gas Service

Gas Appliances

Churchman's Road

Dial 6-2328

SEE US

SEE US

SEE US

SEE US

SEE US

SEE US

SEE US

SEE US

SEE US

SEE US

SEE US

SEE US

SEE US

SEE US

SEE US

SEE US

SEE US

SEE US

SEE US

SEE US

SEE US

National Fibre Co. Announces Staff For Research Lab.

F. L. Stiegler Of Newark Plant Heads Paper-Fibre Section Of Yorklyn Unit

The staff of the National Vulcanized Fibre Company's new research and development laboratory at Yorklyn has been announced by Gerard A. Albert, chairman of the company's research and development program.

Gerald H. Mains of West Chester has been appointed director of the new central laboratory, which will begin full time operation before the end of this year. The laboratory will represent an investment of nearly \$200,000 when complete and will conduct research activities for all divisions of the company.

Assisting Mr. Mains is Alfred J. Green of Wilmington, who has been named manager of the new project.

Frederick L. Stiegler of Newark will head the paper and fibre section and Joseph C. Pesce of Kennett Square will direct the phenolic section.

Mr. Mains, former director of the phenolic division of the firm, has been with the company since 1934.

Mr. Green, formerly assistant director of research of the phenolic division, has been with the company since 1946. He was graduated from the University of Delaware in 1940.

Mr. Stiegler and Mr. Pesce both have been connected with the firm's research and development group. Mr. Stiegler was with the Newark laboratory at Kennett Square.

4-H Club of Bear Plans Achievement Days' Activities

A square dance and church service will mark National 4-H Achievement Day, Nov. 13, for Bear 4-H club members. Plans were made at the regular monthly meeting held in the home of Anita and Milne Ann Fox on Oct. 6.

Members of the committee to work out details for the square dance are Carol Sweetman, chairman; Betty Moore, Wilbur Gregory, and Charles Moore, while Betty Moore, Joan Mowll, Bill Walters, and Milne Ann Fox will plan the church service. The group hopes to obtain the Red Lion Methodist church for the night of Sunday, Nov. 14, when a pageant will be presented.

Three Bear 4-H club members—Wilbur Gregory, Sam Bowser, and Bill Walters—earned ten dollars for the club by participating in the land-judging contest at the 4-H Achievement Fair in Newark. Bear came in first—as a result of the boys' efforts.

David Moore placed third in the county in the tractor operators' contest and will represent New Castle County in state competition later.

At the recent meeting, Dave Moore handed out leaflets and questionnaires to illustrate his talk on farm fires, and he urged members to participate in Fire Prevention Week.

Next month's meeting will be held at the home of Merle Fausnaugh to elect officers for the year. The 1954 officers are President Bill Walters; Vice-president Milne Ann Fox; Secretary Carol Sweetman; Treasurer Wilbur Gregory.

The New Castle County Council of Home Demonstration Clubs met recently in the university's Agricultural Hall with Mrs. Thomas Short, presiding. Seventeen clubs were represented.

A program for 1955 was tentatively approved and plans made for the annual Achievement Day to be held in the hall of the Newark Methodist Church on Nov. 9.

Mrs. Herbert King, international relations chairman of the county council has planned a trip for club members to visit the UN on Dec. 9-10 and 125 members may go each day.

Mrs. Edward Krawtch, of Seaford president of the state council, will represent Delaware clubs at the National Home Demonstration Conference to be held this year in Washington, Oct. 31 thru Nov. 4.

Mrs. H. P. Modsen was named chairman of the group to report the conference to county council.

The home demonstration clubs of Delaware have presented and installed a 21-in. television at the Veterans' Hospital, it was reported. At lunch in the College Inn Miss M. Katharine Jones, New Castle county agent introduced the new state home demonstration agent, Mrs. Alice M. King.

JOAN'S JUDGE-KNOTS

By Joan Davis

(Unusual laws quoted are from "It's The Law" feature in the American Magazine.)

Let's start in the old Blue Grass State this time. If we take you to your old Kentucky home, better careful if you live in a tenement, because that state has a law against keeping cows in tenements. Doesn't say anything about lions or tigers.

Speaking of animals, there's an interesting law in Ohio. In the Buckeye State you mustn't cut off the tail of a horse.

If you've been annoyed by little moppets going "Bang! Bang!" in your face with toy pistols and such, the place for you to settle down is North Andover, Mass. In that town an ordinance forbids the use of "space guns" by the small fry.

You think a length of ordinary rope is harmless? Well, maybe you're right, but don't drag a rope through the streets of Cumberland, Md. There it's illegal.

You lads who indulge in a bit of flirting now and then had better step carefully when you're in Cedar Rapids, Iowa. Just wink in public in that town, boys, and you're likely as not to be arrested for disorderly conduct.

JOAN DAVIS STARS WEEKLY IN "I MARRIED JOAN" ON NBC-TV.

Women's Republican Club Schedules October Meeting

The Women's Republican Club of Newark will hold a regular monthly meeting on Oct. 20, at 8 p.m., in the Odd Fellows Hall, at East Main Street.

Mrs. E. C. Mahanna, chairman of campaign activities, will be in charge of the campaign workshop, and each person is asked to bring notebook and pencil to this last regular meeting before the Nov. 2 election.

Mrs. Russell Hardy, chairman of the hospitality committee, will have charge of the social hour following the meeting.

Washington Snapshots

There was the harassed but hopeful home-owner who took pen in hand and wrote this note to his Congressman:

"Dear Sir—Please do something about our house. The roof leaks."

And the trusting soul who addressed himself to his representative in the nation's capital in this peremptory fashion:

"I am returning the false teeth that they gave me at the Veterans' Hospital. They are not mine. I want you to send them back and make them send me mine."

What about the indignant taxpayer who wrote his Senator:

"I read about all that money the government has down in Washington, D.C. As my Congressman, I demand that you send me some."

And the lady constituent who wrote:

"I understand that you have free mailing privileges, so I am sending you all my Christmas cards for you to mail for me."

These are excerpts from actual letters written to members of Congress, garnered from their waste-paper baskets and their files by Juliet Lowell and published in a book entitled "Dear Mr. Congressman."

NOTICE

Sealed bids will be received by the Emily P. Bissell Sanatorium, 3000 New-Cap Pike, Wilmington, Delaware, until 11:00 A.M. October 23, 1954 for hospital cafeteria furnishings and ventilation shades.

Bidders must conform to the laws of the State of Delaware in such cases provided.

We reserve the right to accept or reject any or all bids or to reduce the amount of commodity to be purchased.

STATE OF DELAWARE
Office of Secretary of State
CERTIFICATE OF DISSOLUTION
To All Whom These Presents May Come: Greeting:

WHEREAS, it appears to my satisfaction by a duly authenticated certificate certifying that the dissolution of THE DELAWARE CORPORATION whose principal office is located at

The Corporation Trust Company
No. 100 West Tenth Street
in the City of Wilmington has been authorized in accordance with the provisions of Section 273 of the General Corporation Law of Delaware, (Chapter 1, Title 8, Delaware Code), as amended, which certificate has been executed, sealed and acknowledged in accordance with the provisions of said Section 273.

Now, therefore, I, JOHN N. McDOWELL, Secretary of State of the State of Delaware, do hereby certify that the said corporation did on the seventh day of October, 1954, file in this office a Certificate of Dissolution, duly executed, sealed and acknowledged in accordance with the provisions of said Section 273.

IN TESTIMONY WHEREOF, I have hereunto set my hand and official seal, at Dover, this seventh day of October, 1954.

JOHN N. McDOWELL,
Secretary of State
M. D. TOMLINSON,
Asst. Secretary of State

CERTIFICATE OF
REDUCTION OF CAPITAL
OF
STEVES INDUSTRIES, INC.

THIS IS TO CERTIFY that STEVES INDUSTRIES, INC. is a corporation created by and existing under the laws of the State of Delaware, the resident agent in charge of its principal office in the State of Delaware being CORPORATION SERVICE COMPANY, 500 Market Street, Wilmington, Delaware.

THAT the Board of Directors of the said corporation, at a meeting called for that purpose, voted in favor of the reduction of capital of STEVES INDUSTRIES, INC. from One Million, Two Hundred Fifty Thousand (\$1,250,000.00) Dollars to Eight Hundred Eighty-three Thousand, Three Hundred and Seventy and No/100 (\$883,370.00) Dollars, and

THAT thereafter the holders of record of more than a majority of the total number of shares of the said STEVES INDUSTRIES, INC. having voting power and now outstanding, voted in favor of the said reduction of capital and the by-laws of the corporation.

THAT the said reduction of capital is to be effected, pursuant to a plan of partial liquidation, by purchasing at private sale and retiring Thirty-six Thousand Six Hundred Sixty-three and No/100 (\$36,663.00) shares of the par value of Ten Dollars (\$10.00) each, amounting to The Hundred Sixty-six Thousand Six Hundred Thirty (\$366,330.00) Dollars.

THAT the price paid for the purchase of the above 36,663 shares was based on and equalled the book value of the assets exchanged for said shares, and this price was approved by the stockholders.

THAT the assets of this corporation remaining after such reduction are sufficient to pay any debts, the payment of which shall not have been otherwise provided for.

IN WITNESS WHEREOF, I have hereunto set my hand and affixed my official seal the day and year hereinabove written.

CLARENCE H. BOSSE
Notary Public in and for
Bexar County, Texas
CLARENCE H. BOSSE
Notary Public, Bexar
County, Texas
Notary Public
County of Bexar, Texas
Oct. 7, 14, 21

Needlework Guild Elects Officers For The Year

At a recent directors meeting the Newark branch of the Needlework Guild of America, officers were elected in Miss Anna Frazer, president; Mrs. C. E. Douglas, 1st vice-president; Mrs. R. L. Burnett, 2nd vice president; Mrs. Francis Lennard, temporary treasurer; and Mrs. S. W. Smith, secretary.

Plans were made for the annual gathering to be held on Tuesday, Oct. 19.

Mrs. Russell Hardy, chairman of the hospitality committee, will have charge of the social hour following the meeting.

Washington Snapshots

There was the harassed but hopeful home-owner who took pen in hand and wrote this note to his Congressman:

"Dear Sir—Please do something about our house. The roof leaks."

And the trusting soul who addressed himself to his representative in the nation's capital in this peremptory fashion:

"I am returning the false teeth that they gave me at the Veterans' Hospital. They are not mine. I want you to send them back and make them send me mine."

What about the indignant taxpayer who wrote his Senator:

"I read about all that money the government has down in Washington, D.C. As my Congressman, I demand that you send me some."

And the lady constituent who wrote:

"I understand that you have free mailing privileges, so I am sending you all my Christmas cards for you to mail for me."

These are excerpts from actual letters written to members of Congress, garnered from their waste-paper baskets and their files by Juliet Lowell and published in a book entitled "Dear Mr. Congressman."

NOTICE

Sealed bids will be received by the Emily P. Bissell Sanatorium, 3000 New-Cap Pike, Wilmington, Delaware, until 11:00 A.M. October 23, 1954 for hospital cafeteria furnishings and ventilation shades.

Bidders must conform to the laws of the State of Delaware in such cases provided.

We reserve the right to accept or reject any or all bids or to reduce the amount of commodity to be purchased.

STATE OF DELAWARE
Office of Secretary of State
CERTIFICATE OF DISSOLUTION
To All Whom These Presents May Come: Greeting:

WHEREAS, it appears to my satisfaction by a duly authenticated certificate certifying that the dissolution of REED ROLLER BIT COMPANY OF CANADA

a Delaware corporation whose principal office is located at

The Corporation Trust Company
No. 100 West Tenth Street
in the City of Wilmington has been authorized in accordance with the provisions of Section 273 of the General Corporation Law of Delaware, (Chapter 1, Title 8, Delaware Code), as amended, which certificate has been executed, sealed and acknowledged in accordance with the provisions of said Section 273.

Now, therefore, I, JOHN N. McDOWELL, Secretary of State of the State of Delaware, do hereby certify that the said corporation did on the seventh day of October, 1954, file in this office a Certificate of Dissolution, duly executed, sealed and acknowledged in accordance with the provisions of said Section 273.

IN TESTIMONY WHEREOF, I have hereunto set my hand and official seal, at Dover, this seventh day of October, 1954.

JOHN N. McDOWELL,
Secretary of State
M. D. TOMLINSON,
Asst. Secretary of State

CERTIFICATE OF
REDUCTION OF CAPITAL
OF
STEVES INDUSTRIES, INC.

THIS IS TO CERTIFY that STEVES INDUSTRIES, INC. is a corporation created by and existing under the laws of the State of Delaware, the resident agent in charge of its principal office in the State of Delaware being CORPORATION SERVICE COMPANY, 500 Market Street, Wilmington, Delaware.

THAT the Board of Directors of the said corporation, at a meeting called for that purpose, voted in favor of the reduction of capital of STEVES INDUSTRIES, INC. from One Million, Two Hundred Fifty Thousand (\$1,250,000.00) Dollars to Eight Hundred Eighty-three Thousand, Three Hundred and Seventy and No/100 (\$883,370.00) Dollars, and

THAT thereafter the holders of record of more than a majority of the total number of shares of the said STEVES INDUSTRIES, INC. having voting power and now outstanding, voted in favor of the said reduction of capital and the by-laws of the corporation.

THAT the said reduction of capital is to be effected, pursuant to a plan of partial liquidation, by purchasing at private sale and retiring Thirty-six Thousand Six Hundred Sixty-three and No/100 (\$36,663.00) shares of the par value of Ten Dollars (\$10.00) each, amounting to The Hundred Sixty-six Thousand Six Hundred Thirty (\$366,330.00) Dollars.

THAT the price paid for the purchase of the above 36,663 shares was based on and equalled the book value of the assets exchanged for said shares, and this price was approved by the stockholders.

IN WITNESS WHEREOF, I have hereunto set my hand and affixed my official seal the day and year hereinabove written.

CLARENCE H. BOSSE
Notary Public in and for
Bexar County, Texas
CLARENCE H. BOSSE
Notary Public, Bexar
County, Texas
Notary Public
County of Bexar, Texas
Oct. 7, 14, 21

DOWELL, Secretary of State of the State of Delaware, do hereby certify that the said corporation did on the seventh day of October, 1954, file in this office a Certificate of Dissolution, duly executed, sealed and acknowledged in accordance with the provisions of said Section 273.

IN TESTIMONY WHEREOF, I have hereunto set my hand and official seal, at Dover, this seventh day of October, 1954.

JOHN N. McDOWELL,
Secretary of State
M. D. TOMLINSON,
Asst. Secretary of State

CERTIFICATE OF
REDUCTION OF CAPITAL
OF
STEVES INDUSTRIES, INC.

THIS IS TO CERTIFY that STEVES INDUSTRIES, INC. is a corporation created by and existing under the laws of the State of Delaware, the resident agent in charge of its principal office in the State of Delaware being CORPORATION SERVICE COMPANY, 500 Market Street, Wilmington, Delaware.

THAT the Board of Directors of the said corporation, at a meeting called for that purpose, voted in favor of the reduction of capital of STEVES INDUSTRIES, INC. from One Million, Two Hundred Fifty Thousand (\$1,250,000.00) Dollars to Eight Hundred Eighty-three Thousand, Three Hundred and Seventy and No/100 (\$883,370.00) Dollars, and

THAT thereafter the holders of record of more than a majority of the total number of shares of the said STEVES INDUSTRIES, INC. having voting power and now outstanding, voted in favor of the said reduction of capital and the by-laws of the corporation.

THAT the said reduction of capital is to be effected, pursuant to a plan of partial liquidation, by purchasing at private sale and retiring Thirty-six Thousand Six Hundred Sixty-three and No/100 (\$36,663.00) shares of the par value of Ten Dollars (\$10.00) each, amounting to The Hundred Sixty-six Thousand Six Hundred Thirty (\$366,330.00) Dollars.

THAT the price paid for the purchase of the above 36,663 shares was based on and equalled the book value of the assets exchanged for said shares, and this price was approved by the stockholders.

IN WITNESS WHEREOF, I have hereunto set my hand and affixed my official seal the day and year hereinabove written.

CLARENCE H. BOSSE
Notary Public in and for
Bexar County, Texas
CLARENCE H. BOSSE
Notary Public, Bexar
County, Texas
Notary Public
County of Bexar, Texas
Oct. 7, 14, 21

CERTIFICATE OF
REDUCTION OF CAPITAL
OF
STEVES INDUSTRIES, INC.

THIS IS TO CERTIFY that STEVES INDUSTRIES, INC. is a corporation created by and existing under the laws of the State of Delaware, the resident agent in charge of its principal office in the State of Delaware being CORPORATION SERVICE COMPANY, 500 Market Street, Wilmington, Delaware.

THAT the Board of Directors of the said corporation, at a meeting called for that purpose, voted in favor of the reduction of capital of STEVES INDUSTRIES, INC. from One Million, Two Hundred Fifty Thousand (\$1,250,000.00) Dollars to Eight Hundred Eighty-three Thousand, Three Hundred and Seventy and No/100 (\$883,370.00) Dollars, and

THAT thereafter the holders of record of more than a majority of the total number of shares of the said STEVES INDUSTRIES, INC. having voting power and now outstanding, voted in favor of the said reduction of capital and the by-laws of the corporation.

THAT the said reduction of capital is to be effected, pursuant to a plan of partial liquidation, by purchasing at private sale and retiring Thirty-six Thousand Six Hundred Sixty-three and No/100 (\$36,663.00) shares of the par value of Ten Dollars (\$10.00) each, amounting to The Hundred Sixty-six Thousand Six Hundred Thirty (\$366,330.00) Dollars.

THAT the price paid for the purchase of the above 36,663 shares was based on and equalled the book value of the assets exchanged for said shares, and this price was approved by the stockholders.

IN WITNESS WHEREOF, I have hereunto set my hand and affixed my official seal the day and year hereinabove written.

CLARENCE H. BOSSE
Notary Public in and for
Bexar County, Texas
CLARENCE H. BOSSE
Notary Public, Bexar
County, Texas
Notary Public
County of Bexar, Texas
Oct. 7, 14, 21

CERTIFICATE OF
REDUCTION OF CAPITAL
OF
STEVES INDUSTRIES, INC.

THIS IS TO CERTIFY that STEVES INDUSTRIES, INC. is a corporation created by and existing under the laws of the State of Delaware, the resident agent in charge of its principal office in the State of Delaware being CORPORATION SERVICE COMPANY, 500 Market Street, Wilmington, Delaware.

THAT the Board of Directors of the said corporation, at a meeting called for that purpose, voted in favor of the reduction of capital of STEVES INDUSTRIES, INC. from One Million, Two Hundred Fifty Thousand (\$1,250,000.00) Dollars to Eight Hundred Eighty-three Thousand, Three Hundred and Seventy and No/100 (\$883,370.00) Dollars, and

THAT thereafter the holders of record of more than a majority of the total number of shares of the said STEVES INDUSTRIES, INC. having voting power and now outstanding, voted in favor of the said reduction of capital and the by-laws of the corporation.

THAT the said reduction of capital is to be effected, pursuant to a plan of partial liquidation, by purchasing at private sale and retiring Thirty-six Thousand Six Hundred Sixty-three and No/100 (\$36,663.00) shares of the par value of Ten Dollars (\$10.00) each, amounting to The Hundred Sixty-six Thousand Six Hundred Thirty (\$366,330.00) Dollars.

THAT the price paid for the purchase of the above 36,663 shares was based on and equalled the book value of the assets exchanged for said shares, and this price was approved by the stockholders.

IN WITNESS WHEREOF, I have hereunto set my hand and affixed my official seal the day and year hereinabove written.

CLARENCE H. BOSSE
Notary Public in and for
Bexar County, Texas
CLARENCE H. BOSSE
Notary Public, Bexar
County, Texas
Notary Public
County of Bexar, Texas
Oct. 7, 14, 21

CERTIFICATE OF
REDUCTION OF CAPITAL
OF
STEVES INDUSTRIES, INC.

THIS IS TO CERTIFY that STEVES INDUSTRIES, INC. is a corporation created by and existing under the laws of the State of Delaware, the resident agent in charge of its principal office in the State of Delaware being CORPORATION SERVICE COMPANY, 500 Market Street, Wilmington, Delaware.

THAT the Board of Directors of the said corporation, at a meeting called for that purpose, voted in favor of the reduction of capital of STEVES INDUSTRIES, INC. from One Million, Two Hundred Fifty Thousand (\$1,250,000.00) Dollars to Eight Hundred Eighty-three Thousand, Three Hundred and Seventy

THE NEWARK POST

Founded January 26, 1910, by the late Everett C. Johnson

An Independent Newspaper
Published Every Thursday by the Newark Post, Inc.
1416 Thompson Lane, Newark, Delaware
Locally and Independently Owned and OperatedLegal and Display advertising rates furnished on request.
In Memoriam and cards of Thanks 7 cents per square line.EDITOR
WAGGAMAN, JR.
ADVERTISING MANAGER
WAGGAMAN, JR.Second class matter, March 10, 1910, at the Postoffice at Newark,
Delaware, under the Act of March 3, 1879.Postage paid at Newark, Delaware, under permit No. 100.
Acceptance for mailing at special rate of postage provided for in
Section 1103, Act of October 3, 1917, authorized on July 1, 1954.
Single copies 5 cents. Make all checks payable to The Newark Post.NATIONAL EDITORIAL
ASSOCIATION
ACTIVE MEMBER

Newark, Delaware, Thursday, October 14, 1954



A PRIVILEGE — AND A DUTY

Registration is necessarily dependent upon some form of identification. And registration is generally resented—Newark to New Caledonia. We don't know about the situation here in Newark and throughout the United States, registration can also be guaranteed in exchange for registration.

Register Saturday to vote in the November elections. Perhaps because voting has been made so easy for us, we take their voting privileges lightly. But the freedom has been achieved the hard way.

It is a simple matter to register, and to vote is our duty. We can't vote in November without proper registration. Saturday is the last chance for that.

NEWARK IN REVIEW

Twenty-five Years Ago

First Service Club
The organization of the first service club—the First Service Club—was discussed at a meeting on Monday night at the First Service Club. Dr. E. R. Jones was named temporary chairman and Ira S. Bringer, assistant superintendent, was named secretary of the organization.

Narrow Escape
The capture of a near Glasgow, Delaware State Senator, who escaped being killed by a young bull on his farm, was reported by the Delaware State Senator.

Quota Club Meeting
The meeting of the Quota Club was held at Kent Hall on Tuesday evening with some 30 members of the club and university representatives present. Dr. J. R. Downes, who was the guest speaker, was the guest of honor.

Street Progress
The progress is reported by the Delaware State Senator, who escaped being killed by a young bull on his farm, was reported by the Delaware State Senator.

Legislative Slip
The Delaware State Senator, who escaped being killed by a young bull on his farm, was reported by the Delaware State Senator.

Sports
The Delaware State Senator, who escaped being killed by a young bull on his farm, was reported by the Delaware State Senator.

Miscellaneous
The Delaware State Senator, who escaped being killed by a young bull on his farm, was reported by the Delaware State Senator.

Local News
The Delaware State Senator, who escaped being killed by a young bull on his farm, was reported by the Delaware State Senator.

E-52 Players Plan
Maxwell Anderson
Drama Production"Anne Of The Thousand
Days" To Be Presented
On Mitchell Hall Stage

"Anne of the Thousand Days" by Maxwell Anderson, a drama of the violent Tudor period of English history, will be presented by the E-52 University Theatre Oct. 21, 22, and 23 at 8:15 p.m. in Mitchell Hall on the Newark campus.

"Anne" is the story of ambitious King Henry VIII and his love affair with Anne Boleyn, a charming young girl of his court. It is also the story of the turbulent times in the kingdom after Britain's separation from the Roman Catholic church, effected so that the ill-fated marriage of Henry and Anne could take place.

Featured in the leading roles are Judith Kase, of Newark, and George Cavey of Springfield, Pa. Miss Kase is the author of an original version of "Snow White" which played 17 performances during the E-52 children's theatre tour last spring. Cavey played the male lead in the children's production.

Director of the production is Thomas B. Pegg of the department of dramatic arts and speech. Herman D. Middleton, of the drama department, is technical director and set designer and Jean DeVries, a senior drama major from Drexel Hill, Pa., is assistant director.

Tickets may be purchased at the Mitchell Hall box office beginning Oct. 13 and will be available every weekday afternoon from 3:30 to 5 p.m. and evening from 7 to 8 p.m. until the final performance.

Letters To
The Editor1418 North Highland Avenue
Hollywood 28, Calif.

Dear Sir:
On the suggestion of prominent persons in your community, may we cordially invite you and your organization to participate in some of the activities of National Mental Retarded Children's Week, from Sunday, Nov. 14, to Tuesday, Nov. 23, in cooperation with your local association for retarded children.

Three out of every hundred children in your community and every community, according to scientific clinical tests, are burdened, in some degree, by this great handicap—300 are born every day in the United States. It is many times more prevalent than cerebral palsy; 10 times more than disabling polio.

Today, we know or suspect 70 diseases or conditions that can occur before, during or after birth which cause this heartbreaking human handicap. Science is already making gains in the search for prevention in babies yet unborn. Physicians, psychologists, teachers, social workers and others, spurred on by the National Association for Retarded Children, are finding ways to develop the retarded child to the best of his ability. A shining hope lies in the future.

The third week of November has been officially designated as National Retarded Children's Week in towns and cities all over the country. A statement to this effect will be made by the President of the United States. Community service clubs will be working hand in hand with local groups of the National Association for Retarded Children in a great crusade for public enlightenment. May we count on you to offer the services of your organization when you are contacted by the local campaign chairman in your community?

Pearl S. Buck has said, "There is a great dawn awaiting these youngsters... who are God's most innocent children." We Americans have much to be thankful for this coming Thanksgiving. Join with us in giving thanks for our most precious treasure—normal children—by helping those children who are not.

Sincerely yours,
Dale Evans, Roy Rogers
Co-Chairmen, National Retarded Children's Week

Editor's Note: Roy Rogers and Dale, no less! The King and Queen of the cowboys not only have a handful of their own little fellows, but they are children champions on a national scale.

Up front, Coach Gillespie has Sommermeier and Willis, ends; Gallagher and McDowell, tackles; Schwartz and Surratt, guards; and Ford at center.

Brothers Paul and Charles Pie will play for the Newark Country Club golf championship this weekend. In the semi-finals, Charles stopped S. H. Stradley, 4 and 3; while Paul defeated H. A. Turner, Jr., 1 up in 20 holes.

Mr. and Mrs. Walter H. Hilton, and son Roderick, have returned to their home in Newark after spending the summer at Marion, Mass.

Mr. and Mrs. Fenton Daugherty entertained weekend guests from Reisterstown, Md., in Mr. and Mrs. George A. Henry, and Mr. and Mrs. H. A. Henry.

Miss Marian Owens left last week for Washington where she will become a student at Gunston Hall. William Owens has left for the Northwood School, Lake Placid, N.Y.

Miss Helen Fader entertained at bridge on Monday in honor of her sister, Mrs. Edward Thompson, of Ohio.

Mr. and Mrs. Norman Slack, Miss Lydia Foard and Delena Leak have returned home after a trip to Canada.

Ann W. Chalmers resumed her studies at Temple University on Sept. 23.

Mr. and Mrs. Carl Rankin entertained Mrs. Rankin's aunt and uncle, Mr. and Mrs. Gustav Hummard, of East Orange, N.Y., at their Newark home last week.

Miscellaneous
Norma Shearer in "The Last of Mrs. Cheney" was billed at the local movie theater; a brick house on East Main Street was offered for rent at \$30 monthly; and a new five-room bungalow with cellar, garage, and five acres of ground was for sale at \$3,000 on "easy terms."

Kiwanis Speaker



H. Park Arnold

Newark Delegates
Attend Kiwanis
District Meeting

The Kiwanis Club of Newark was represented at the 1954 convention at Staunton, Va., Oct. 7-9 by three delegates, Clarence B. Brown, local president announced yesterday.

Newark delegates to the convention were Mr. Brown, W. Harry Dawson, and William H. Murray.

H. Park Arnold, trustee of Kiwanis International and prominent Glendale, Calif., businessman was the featured speaker during the three-day meeting at the Stonewall Jackson Hotel.

Mr. Arnold, one of the principal speakers and the official representative of Kiwanis International at the meeting is a 31-year veteran of Kiwanis. During that time he has been president of the Kiwanis Club of Glendale, governor of the California-Nevada-Hawaii Kiwanis district, and chairman of many district committees.

Dorsey Brothers
To Play At Ball
For Police Fund

5th Annual DAP Benefit
Dances For Camp Barnes
To Feature Top Bandsmen

The fifth annual dual ball of the Delaware Association, Chiefs of Police, for the benefit of Camp Barnes, will be held Wednesday, Oct. 27, at the Seaford Fire Hall and Thursday, Oct. 28, in the Gold Ballroom of the Hotel DuPont.

More than 500 persons are expected to attend each part. Music for the dances will be provided by the orchestra of Tommy and Jimmy Dorsey.

Tickets will be available at any state, city, or town police station in Delaware.

Receipts from the two balls will be applied to the fund for Camp Barnes. Each year approximately 400 boys from all parts of the state attend Camp Barnes. Boys selected are those who would otherwise be unable to attend such a camp. Latest addition to the camp equipment is a \$40,000 swimming pool.

Veterans' Corner

Provided by The
Veterans' Administration
Information Service

Q—I have an unused certificate of entitlement for Korean GI training, but it states I must have started by August 20, 1954. Now that a new law gives me another year to begin, is this certificate still good?

A—The unused certificate still is valid. Present it to your school when you enroll, along with a photograph of your separation paper. The school will admit you under the Korea GI Bill, so long as your separation paper shows you are beginning within three years after your discharge.

Q—I was discharged from service on July 1, 1951. Will the new Korea GI Bill extension help me get into school this fall?

A—No. Under the new law, veterans separated before August 20, 1951, must have begun Korea GI training by August 20, 1954.

Q—Under the new law signed by the President, do all disabled veterans get an extra four years in which to complete Public Law 16 training?

A—No. The added four years apply only to disabled veterans who (1) were too severely disabled to begin in time; (2) were late in establishing that they have service-connected ailments; or (3) who originally received discharges barring them from training, and later had them changed so that now they are eligible.

Q—I am a disabled Korean veteran, already out of service. I am not in any of the special categories listed in the new law having to do with training deadlines. By what date must I complete Public Law 16 training?

A—Training for disabled Korean veterans out of service before August 20, 1954, must be completed no later than August 20, 1955.

Hobbies and Crafts

More Hobbies Mean

More Sparetime Fun

For Everyone!



Our counters are brimming over with challenging, new hobby ideas to suit every talent, every interest, every pocketbook... paint sets, ceramic kits, model planes, trains, boats, cars and what-not! Mom, dad, sister, brother... there's a hobby for everyone!

the hobby shop

Opp. Theater

PHONE 6081

Were out to make a Record
—and how can we miss with a hit like this?



WE'RE shooting for the biggest October in Buick history and we're willing to go all out to make it. Right now, Buick is outselling every other car in the nation—regardless of price class—except two of the so-called "low-priced three."

So you know that it has the combination of horsepower—room—comfort—performance—and styling too good to miss.

And it isn't hard for you to figure out that Buick dealers must be offering the kind of prices and trade-ins that the public goes for—because you can't make record sales these days unless you have everything it takes to make a winning combination.

Come in and see us, and you'll know what we mean.

\$2302.48

Only

buys this

BUICK V8 SPECIAL

delivered locally

*Excludes Government SPECIAL Sedan, Model 480, illustrated. Optional equipment, accessories, taxes and local fees, if any, additional. Prices may vary slightly in adjusting communities due to shipping charges. All prices subject to change without notice. Even the featured featured ad you may want one urgently, such as heater & defroster... only \$51.70.

MILTON BERLE STARS FOR BUICK—See The Buick-Berle Show/Alternate Tuesday Evenings

Here's the big 3-Way Bonus
we offer in Buick today

- Advanced Styling**—the very look of tomorrow, with long, low glamor lines, sports-car snap, and that trend-setting panoramic windshield that most other cars won't have till 1955 or later.
- Better Buy**—a lot more automobile for your money—more room and power and ride comfort and solidity of structure—plus the higher resale value of a car that will still be fresh and new-looking well into the future.
- Top Allowance**—from the tremendous volume that has put Buick into the top 3 of the nation's best sellers. So you get the benefit of our soaring success in the form of a higher trade-in allowance on your present car. Come in and check!

Buick Sales are Soaring
—so Buick 'deals' are bigger than ever right now!

WM. H. PORTER, INC.

164 E. MAIN STREET

PHONE 8-8741
or 8-8742

PERSONALS

(Continued from Page 7)

Mr. and Mrs. Clarence Flunier, of Plymouth Meeting, Pa., were guests of Miss Ann W. Chalmers, of Delaware Avenue on Saturday.

The infant daughter of Mr. and Mrs. Joseph Zappo, Jr., was christened on Sunday, October 10, in the First Presbyterian Church, Rev. H. E. Hallman officiated, the godparents were Mrs. Nellie Hinkel, of Philadelphia and Mr. Tucker Ware of Newark. The baby was named Rosemarie.

Members of the First Presbyterian Church will be guests of the Women's Association of West Presbyterian Church tonight at 8 p.m. Dr. Frank C. Laubach will be the speaker.

Dr. Laubach, literary specialist for World Literature, Inc., has since 1933, devoted his time to preparing literary charts for the illiterate three-fifths of the world. He produced charts in 230 languages and dialects in 48 countries. A conservative estimate shows that 60,000,000 people have learned to read by the Laubach method or adaptations of it.

Mr. and Mrs. Eugene A. Reynolds have returned from their wedding trip to Virginia and are now at home on the Coombs Bridge-Glasgow Road. Mrs. Reynolds is the former Miss Alice M. Stanton, daughter of Mr. and Mrs. Joseph N. Stanton.

Mr. and Mrs. Clayton Keith entertained in honor of Mrs. Keith's parents, Mr. and Mrs. Samuel Tweed Stewart's fortieth wedding anniversary at their home, Coombs Bridge and Glasgow Road, on Sunday, October 10. Among their guests were: Mr. and Mrs. C. W. Keith, Sr. and daughter, Miss Ann Keith, Mr. and Mrs. George McMichael and son George, Mrs. Ruth McMichael, Mr. Steve Goodson, Mr. and Mrs. Randolph D. Lindell, Mr. and Mrs. Harry McCormick, Miss Ruth Ann McCormick, Mr. and Mrs. John Logan and daughters, Carol Ann and Kay, Mrs. Mary Peel, Mr. and Mrs. Eugene Reynolds, Mr. and Mrs. Joseph Stanton, Mr. and Mrs. Lambert Ivens, Mr. and Mrs. Roy Ivens, Mr. and Mrs. Charles Miles, Mr. and Mrs. J. Harvey Dickey, Mrs. Raymond Everett, Mrs. May McGuinness, Mr. and Mrs. Billy Neville, Mr. and Mrs. Russell Bing, Mr. and Mrs. David Rambo, Mr. and Mrs. Irving Hutchinson.

Mr. and Mrs. Keith had Mr. and Mrs. Stewart, Mr. and Mrs. Michael and son George as dinner guests before the reception.

Mr. and Mrs. Stewart were married on October 14, 1914.

Mr. and Mrs. Earl Stanley and daughters, Edna, Ann and Gertrude, of near Newark have returned home from a visit to Lancaster, South Carolina.

Miss Margaret Butler of Wilmington was the weekend guest of her sister, Mrs. William C. Chalmers, West Delaware Avenue.

Billie Melton, son of Mr. and Mrs. Robert Melton was honored with a birthday party on Friday evening, October 8, at his home, Binns Development, Elkton Road.

SHERIFF'S SALE—By virtue of a writ of Lev. Fac. No. 22 November Term A.D. 1954 to me directed will be exposed to Public Sale at the Court House, Southeast Corner of Eleventh and King Streets, City of Wilmington, New Castle County, Delaware, on FRIDAY, THE TWENTY-NINTH DAY OF OCTOBER, A.D. 1954 at 10 o'clock A.M., Eastern Standard Time, the following described Real Estate viz:

ALL That certain lot, piece or parcel of land, with the buildings thereon erected, situate in New Castle County, Delaware, and known as Lot No. 64, Block 12, on the Plan of Section 1, DUNELITH, as said Plan is of record in the Office for the Recording of Deeds, in and for New Castle County, Delaware, in Plat Record 2, Page 36, and more particularly bounded and described in accordance with a survey made by Howard L. Roberts, Civil Engineer.

BEING a point on the Northwesterly side of Robinson Drive, at fifty feet wide, said point being in the division line between Lots Nos. 64 and 65, Block 12, and located by the following three courses and distances, measured:

1. Beginning at a point on the Northwesterly side of Robinson Drive, at fifty feet wide, said point being in the division line between Lots Nos. 64 and 65, Block 12, and located by the following three courses and distances, measured:

1. Beginning at a point on the Northwesterly side of Robinson Drive, at fifty feet wide, said point being in the division line between Lots Nos. 64 and 65, Block 12, and located by the following three courses and distances, measured:

1. Beginning at a point on the Northwesterly side of Robinson Drive, at fifty feet wide, said point being in the division line between Lots Nos. 64 and 65, Block 12, and located by the following three courses and distances, measured:

1. Beginning at a point on the Northwesterly side of Robinson Drive, at fifty feet wide, said point being in the division line between Lots Nos. 64 and 65, Block 12, and located by the following three courses and distances, measured:

1. Beginning at a point on the Northwesterly side of Robinson Drive, at fifty feet wide, said point being in the division line between Lots Nos. 64 and 65, Block 12, and located by the following three courses and distances, measured:

1. Beginning at a point on the Northwesterly side of Robinson Drive, at fifty feet wide, said point being in the division line between Lots Nos. 64 and 65, Block 12, and located by the following three courses and distances, measured:

1. Beginning at a point on the Northwesterly side of Robinson Drive, at fifty feet wide, said point being in the division line between Lots Nos. 64 and 65, Block 12, and located by the following three courses and distances, measured:

1. Beginning at a point on the Northwesterly side of Robinson Drive, at fifty feet wide, said point being in the division line between Lots Nos. 64 and 65, Block 12, and located by the following three courses and distances, measured:

1. Beginning at a point on the Northwesterly side of Robinson Drive, at fifty feet wide, said point being in the division line between Lots Nos. 64 and 65, Block 12, and located by the following three courses and distances, measured:

1. Beginning at a point on the Northwesterly side of Robinson Drive, at fifty feet wide, said point being in the division line between Lots Nos. 64 and 65, Block 12, and located by the following three courses and distances, measured:

1. Beginning at a point on the Northwesterly side of Robinson Drive, at fifty feet wide, said point being in the division line between Lots Nos. 64 and 65, Block 12, and located by the following three courses and distances, measured:

1. Beginning at a point on the Northwesterly side of Robinson Drive, at fifty feet wide, said point being in the division line between Lots Nos. 64 and 65, Block 12, and located by the following three courses and distances, measured:

1. Beginning at a point on the Northwesterly side of Robinson Drive, at fifty feet wide, said point being in the division line between Lots Nos. 64 and 65, Block 12, and located by the following three courses and distances, measured:

Local Women Attend GOP Convention In Wilmington

A group of Newark women attended the convention of the Women's Republican Clubs of Delaware at the Hotel duPont.

Those attending the convention and luncheon from Newark were Mrs. Elizabeth McKelvey, Mrs. Ryan, Mrs. R. O. Bausman, Mrs. Fred Wheelers, Mrs. Edward Glother, Mrs. E. C. Mahanna, Mrs. Henry Wolf, Mrs. Russell Hardy, and Mrs. J. F. Anderson.

Mrs. E. L. Symington, Mrs. G. B. Wagon, Mrs. Lillian Messick, Mrs. A. L. Lackman, Mrs. S. L. Diehl, Jr., Mrs. Howard Jernee, Mrs. Robert Gregg, Mrs. Pearl Williams, Mrs. Alison F. Manna, and Mrs. C. S. Lackman all attended from the Newark area.

George D. Hinkle, son of Mr. and Mrs. Floyd Hinkle, Jr. of 23 Choate St. was promoted to Corporal as of October 1. He is with the 24th Anti-Aircraft in the Radar Division and has been stationed in Pusan, Korea, for the past year and a half, having entered the service in March, 1953.

He graduated from the Newark High School, attended the U. of D. for one year and was employed by the duPont Co., Newport, when he went into the service.

Mrs. Harry Rossland of Worcester, Mass., spent this week with her sister, Miss Ann Gallagher, 150 West Main Street.

Mrs. W. Harry Dawson and Mrs. J. Harvey Dickey attended the Fall Conference of the New Castle Presbyterian held in Pocomoke City, Md., on Tuesday.

Mrs. C. P. Hearn, Mrs. R. W. Hearn, Mrs. H. N. Reed, Mrs. A. B. Eastman and Mrs. Harold E. Tiffany attended the second day session at Westminster church, Wilmington, on Wednesday.

Street and Mrs. Catherine Smith spent last week in Vermont, with Mrs. Crook's brother, Mr. W. G. Lusher.

The J. A. O'Daniel Unit No. 10, American Legion Auxiliary will hold a food sale, combining Christmas Cards and other notions, on Friday, October 29, starting at 10:30 a.m. in front of the Abbott Shoe Store, Main St.

A new oil portrait of the Rt. Rev. Arthur R. McKinstry, bishop of the Episcopal Diocese of Delaware, was officially presented to the A. Felix Bishop Memorial House, Rehoboth Beach, on October 5, by Bishop Co-adjuutor J. Brooke Mosley.

The life-size portrait showing Bishop McKinstry seated, and wearing his clerical robe, was a wearing his diocese by the artist, Mrs. C. Roy Donoho of Orchard Road.

SHERIFF'S SALE—By virtue of a writ of Lev. Fac. No. 30 November Term A.D. 1954 to me directed will be exposed to Public Sale at the Court House, Southeast Corner of Eleventh and King Streets, City of Wilmington, New Castle County, Delaware, on FRIDAY, THE TWENTY-NINTH DAY OF OCTOBER, A.D. 1954 at 10 o'clock A.M., Eastern Standard Time, the following described Real Estate viz:

ALL That certain lot, piece or parcel of land, with the buildings thereon erected, situate in New Castle County, Delaware, and known as Lot No. 28, on the final plat of Section A, of Wilmington, in and for New Castle County, Delaware, in the Recorder of Deeds Office in and for New Castle County, in Deed Record 2, Volume 27, Page 601, situate in New Castle Hundred, New Castle County and State of Delaware, more particularly bounded and described as follows, to wit:

BEING a point on the Northwesterly side of Robinson Drive, at fifty feet wide, said point being in the division line between Lots Nos. 64 and 65, Block 12, and located by the following three courses and distances, measured:

1. Beginning at a point on the Northwesterly side of Robinson Drive, at fifty feet wide, said point being in the division line between Lots Nos. 64 and 65, Block 12, and located by the following three courses and distances, measured:

1. Beginning at a point on the Northwesterly side of Robinson Drive, at fifty feet wide, said point being in the division line between Lots Nos. 64 and 65, Block 12, and located by the following three courses and distances, measured:

1. Beginning at a point on the Northwesterly side of Robinson Drive, at fifty feet wide, said point being in the division line between Lots Nos. 64 and 65, Block 12, and located by the following three courses and distances, measured:

1. Beginning at a point on the Northwesterly side of Robinson Drive, at fifty feet wide, said point being in the division line between Lots Nos. 64 and 65, Block 12, and located by the following three courses and distances, measured:

1. Beginning at a point on the Northwesterly side of Robinson Drive, at fifty feet wide, said point being in the division line between Lots Nos. 64 and 65, Block 12, and located by the following three courses and distances, measured:

1. Beginning at a point on the Northwesterly side of Robinson Drive, at fifty feet wide, said point being in the division line between Lots Nos. 64 and 65, Block 12, and located by the following three courses and distances, measured:

1. Beginning at a point on the Northwesterly side of Robinson Drive, at fifty feet wide, said point being in the division line between Lots Nos. 64 and 65, Block 12, and located by the following three courses and distances, measured:

1. Beginning at a point on the Northwesterly side of Robinson Drive, at fifty feet wide, said point being in the division line between Lots Nos. 64 and 65, Block 12, and located by the following three courses and distances, measured:

1. Beginning at a point on the Northwesterly side of Robinson Drive, at fifty feet wide, said point being in the division line between Lots Nos. 64 and 65, Block 12, and located by the following three courses and distances, measured:

1. Beginning at a point on the Northwesterly side of Robinson Drive, at fifty feet wide, said point being in the division line between Lots Nos. 64 and 65, Block 12, and located by the following three courses and distances, measured:

1. Beginning at a point on the Northwesterly side of Robinson Drive, at fifty feet wide, said point being in the division line between Lots Nos. 64 and 65, Block 12, and located by the following three courses and distances, measured:

1. Beginning at a point on the Northwesterly side of Robinson Drive, at fifty feet wide, said point being in the division line between Lots Nos. 64 and 65, Block 12, and located by the following three courses and distances, measured:

1. Beginning at a point on the Northwesterly side of Robinson Drive, at fifty feet wide, said point being in the division line between Lots Nos. 64 and 65, Block 12, and located by the following three courses and distances, measured:

1. Beginning at a point on the Northwesterly side of Robinson Drive, at fifty feet wide, said point being in the division line between Lots Nos. 64 and 65, Block 12, and located by the following three courses and distances, measured:

1. Beginning at a point on the Northwesterly side of Robinson Drive, at fifty feet wide, said point being in the division line between Lots Nos. 64 and 65, Block 12, and located by the following three courses and distances, measured:

Pastor Granted Vacation After Construction Chore

The Rev. Norman L. Handy, pastor of Wesleyan Methodist Church, George Road Village, has been granted two weeks' leave of absence by his congregation.

In addition to his ministerial activities, Rev. Handy has been very busy with the building of the new church, now nearing completion. With his wife and little daughter, Cynthia, he is vacationing with relatives in Pennsylvania.

During his absence, the pulpit will be occupied by visiting ministers and services will continue each Sunday as usual.

Mrs. Anne H. Longenbach, is receiving reservations for the fall workshop of the Delaware State Division of the American Association of University Women in the Fine Arts Building of Wesley Junior College at Dover on Saturday, Oct. 16.

The workshop is to provide material and information for the year's work to the various Delaware branches and to inform every member of the whole field of study and action in which AAUW state division is involved.

Mr. and Mrs. W. Edward Frazer of Penn Valley, Pa., announce the engagement of their daughter, Miss Marion Frazer, to Mr. L. R. Rogers Fouracre, Jr., son of Mr. and Mrs. R. Rogers Fouracre of Newark.

Miss Frazer, a graduate of Lower Merion High School, is a senior at the University of Delaware. Mr. Fouracre attended Augusta Military Academy and is a graduate of Newark High School and the University of Delaware, where he was a member of the Sigma Phi Epsilon Fraternity.

SHERIFF'S SALE—By virtue of a writ of Lev. Fac. No. 31 November Term A.D. 1954 to me directed will be exposed to Public Sale at the Court House, Southeast Corner of Eleventh and King Streets, City of Wilmington, New Castle County, Delaware, on FRIDAY, THE TWENTY-NINTH DAY OF OCTOBER, A.D. 1954 at 10 o'clock A.M., Eastern Standard Time, the following described Real Estate viz:

ALL That certain lot, piece or parcel of land, with the buildings thereon erected, situate in New Castle County, Delaware, and known as Lot No. 28, on the final plat of Section A, of Wilmington, in and for New Castle County, Delaware, in the Recorder of Deeds Office in and for New Castle County, in Deed Record 2, Volume 27, Page 601, situate in New Castle Hundred, New Castle County and State of Delaware, more particularly bounded and described as follows, to wit:

BEING a point on the Northwesterly side of Robinson Drive, at fifty feet wide, said point being in the division line between Lots Nos. 64 and 65, Block 12, and located by the following three courses and distances, measured:

1. Beginning at a point on the Northwesterly side of Robinson Drive, at fifty feet wide, said point being in the division line between Lots Nos. 64 and 65, Block 12, and located by the following three courses and distances, measured:

1. Beginning at a point on the Northwesterly side of Robinson Drive, at fifty feet wide, said point being in the division line between Lots Nos. 64 and 65, Block 12, and located by the following three courses and distances, measured:

1. Beginning at a point on the Northwesterly side of Robinson Drive, at fifty feet wide, said point being in the division line between Lots Nos. 64 and 65, Block 12, and located by the following three courses and distances, measured:

1. Beginning at a point on the Northwesterly side of Robinson Drive, at fifty feet wide, said point being in the division line between Lots Nos. 64 and 65, Block 12, and located by the following three courses and distances, measured:

1. Beginning at a point on the Northwesterly side of Robinson Drive, at fifty feet wide, said point being in the division line between Lots Nos. 64 and 65, Block 12, and located by the following three courses and distances, measured:

1. Beginning at a point on the Northwesterly side of Robinson Drive, at fifty feet wide, said point being in the division line between Lots Nos. 64 and 65, Block 12, and located by the following three courses and distances, measured:

1. Beginning at a point on the Northwesterly side of Robinson Drive, at fifty feet wide, said point being in the division line between Lots Nos. 64 and 65, Block 12, and located by the following three courses and distances, measured:

1. Beginning at a point on the Northwesterly side of Robinson Drive, at fifty feet wide, said point being in the division line between Lots Nos. 64 and 65, Block 12, and located by the following three courses and distances, measured:

1. Beginning at a point on the Northwesterly side of Robinson Drive, at fifty feet wide, said point being in the division line between Lots Nos. 64 and 65, Block 12, and located by the following three courses and distances, measured:

1. Beginning at a point on the Northwesterly side of Robinson Drive, at fifty feet wide, said point being in the division line between Lots Nos. 64 and 65, Block 12, and located by the following three courses and distances, measured:

1. Beginning at a point on the Northwesterly side of Robinson Drive, at fifty feet wide, said point being in the division line between Lots Nos. 64 and 65, Block 12, and located by the following three courses and distances, measured:

1. Beginning at a point on the Northwesterly side of Robinson Drive, at fifty feet wide, said point being in the division line between Lots Nos. 64 and 65, Block 12, and located by the following three courses and distances, measured:

1. Beginning at a point on the Northwesterly side of Robinson Drive, at fifty feet wide, said point being in the division line between Lots Nos. 64 and 65, Block 12, and located by the following three courses and distances, measured:

1. Beginning at a point on the Northwesterly side of Robinson Drive, at fifty feet wide, said point being in the division line between Lots Nos. 64 and 65, Block 12, and located by the following three courses and distances, measured:

1. Beginning at a point on the Northwesterly side of Robinson Drive, at fifty feet wide, said point being in the division line between Lots Nos. 64 and 65, Block 12, and located by the following three courses and distances, measured:

1. Beginning at a point on the Northwesterly side of Robinson Drive, at fifty feet wide, said point being in the division line between Lots Nos. 64 and 65, Block 12, and located by the following three courses and distances, measured:

1. Beginning at a point on the Northwesterly side of Robinson Drive, at fifty feet wide, said point being in the division line between Lots Nos. 64 and 65, Block 12, and located by the following three courses and distances, measured:

1. Beginning at a point on the Northwesterly side of Robinson Drive, at fifty feet wide, said point being in the division line between Lots Nos. 64 and 65, Block 12, and located by the following three courses and distances, measured:

1. Beginning at a point on the Northwesterly side of Robinson Drive, at fifty feet wide, said point being in the division line between Lots Nos. 64 and 65, Block 12, and located by the following three courses and distances, measured:

1. Beginning at a point on the Northwesterly side of Robinson Drive, at fifty feet wide, said point being in the division line between Lots Nos. 64 and 65, Block 12, and located by the following three courses and distances, measured:

Kindergarten Association Discusses Parent Program

The Newark Kindergarten Association met last week in the lounge of Old College on the University of Delaware campus to discuss the parent participation program, a feature which officers of the association consider an important factor in the cooperative endeavor.

Male members held a stag work party at the kindergarten on Tyre Avenue on Saturday, putting the site in better shape for the school year.

Members of the Delaware Society Daughters of Founders and Patriots of America, will unveil a plaque at ceremonies at the Old Welsh Tract Church, near Newark, on Monday afternoon, Oct. 18, at 3:30 p.m. All members of the church have been invited to attend as well as other guests.

Mrs. Everett C. Johnson, Winlow Road, whose father was an elder at the church for many years, will receive the marker.

Among others attending will be Mrs. Harry Clark Boden of West Park Place, national president of Three Crusades; Mrs. Charles I. Hoch, Wilmington, regent of the American Revolution; Mrs. David S. Eastburn, Newark, regent of Cooch's Bridge Chapter, DAA, and Mrs. Ralph McCloskey, Wilmington, regent of Caesar Rodney Chapter, DAR.

Dr. Ernest F. Waller, head of the Animal and Poultry Industry Department at the University of Delaware, was recently appointed to represent the American Veterinary Medical Association on the National Research Council. Dr. Waller was appointed to this position by the board of directors of the AVMA.

Mr. Orville E. Otley of Nottingham Road has returned home from a few weeks vacation at Takoma Park, Md., with his son-in-law and daughter, Dr. and Mrs. Frederick Jonker.

More and more of our countrymen are finding peace of soul and mind in worship in churches of their choice. Recent figures show that 59 per cent of our population now is affiliated with a church. Sales of religious books were three times that of all other books in 1953; religious films are strong at box offices, some with spiritual themes are on the "Hit Parade."

THE TWENTY-NINTH DAY OF OCTOBER, A.D. 1954 at 10 o'clock A.M., Eastern Standard Time, the following described Real Estate viz:

ALL That certain lot, piece or parcel of land, with the buildings thereon erected, situate in New Castle County, Delaware, and known as Lot No. 28, on the final plat of Section A, of Wilmington, in and for New Castle County, Delaware, in the Recorder of Deeds Office in and for New Castle County, in Deed Record 2, Volume 27, Page 601, situate in New Castle Hundred, New Castle County and State of Delaware, more particularly bounded and described as follows, to wit:

BEING a point on the Northwesterly side of Robinson Drive, at fifty feet wide, said point being in the division line between Lots Nos. 64 and 65, Block 12, and located by the following three courses and distances, measured:

1. Beginning at a point on the Northwesterly side of Robinson Drive, at fifty feet wide, said point being in the division line between Lots Nos. 64 and 65, Block 12, and located by the following three courses and distances, measured:

1. Beginning at a point on the Northwesterly side of Robinson Drive, at fifty feet wide, said point being in the division line between Lots Nos. 64 and 65, Block 12, and located by the following three courses and distances, measured:

1. Beginning at a point on the Northwesterly side of Robinson Drive, at fifty feet wide, said point being in the division line between Lots Nos. 64 and 65, Block 12, and located by the following three courses and distances, measured:

1. Beginning at a point on the Northwesterly side of Robinson Drive, at fifty feet wide, said point being in the division line between Lots Nos. 64 and 65, Block 12, and located by the following three courses and distances, measured:

1. Beginning at a point on the Northwesterly side of Robinson Drive, at fifty feet wide, said point being in the division line between Lots Nos. 64 and 65, Block 12, and located by the following three courses and distances, measured:

1. Beginning at a point on the Northwesterly side of Robinson Drive, at fifty feet wide, said point being in the division line between Lots Nos. 64 and 65, Block 12, and located by the following three courses and distances, measured:

1. Beginning at a point on the Northwesterly side of Robinson Drive, at fifty feet wide, said point being in the division line between Lots Nos. 64 and 65, Block 12, and located by the following three courses and distances, measured:

1. Beginning at a point on the Northwesterly side of Robinson Drive, at fifty feet wide, said point being in the division line between Lots Nos. 64 and 65, Block 12, and located by the following three courses and distances, measured:

1. Beginning at a point on the Northwesterly side of Robinson Drive, at fifty feet wide, said point being in the division line between Lots Nos. 64 and 65, Block 12, and located by the following three courses and distances, measured:

1. Beginning at a point on the Northwesterly side of Robinson Drive, at fifty feet wide, said point being in the division line between Lots Nos. 64 and 65, Block 12, and located by the following three courses and distances, measured:

1. Beginning at a point on the Northwesterly side of Robinson Drive, at fifty feet wide, said point being in the division line between Lots Nos. 64 and 65, Block 12, and located by the following three courses and distances, measured:

1. Beginning at a point on the Northwesterly side of Robinson Drive, at fifty feet wide, said point being in the division line between Lots Nos. 64 and 65, Block 12, and located by the following three courses and distances, measured:

1. Beginning at a point on the Northwesterly side of Robinson Drive, at fifty feet wide, said point being in the division line between Lots Nos. 64 and 65, Block 12, and located by the following three courses and distances, measured:

1. Beginning at a point on the Northwesterly side of Robinson Drive, at fifty feet wide, said point being in the division line between Lots Nos. 64 and 65, Block 12, and located by the following three courses and distances, measured:

1. Beginning at a point on the Northwesterly side of Robinson Drive, at fifty feet wide, said point being in the division line between Lots Nos. 64 and 65, Block 12, and located by the following three courses and distances, measured:

1. Beginning at a point on the Northwesterly side of Robinson Drive, at fifty feet wide, said point being in the division line between Lots Nos. 64 and 65, Block 12, and located by the following three courses and distances, measured:

1. Beginning at a point on the Northwesterly side of Robinson Drive, at fifty feet wide, said point being in the division line between Lots Nos. 64 and 65, Block 12, and located by the following three courses and distances, measured:

1. Beginning at a point on the Northwesterly side of Robinson Drive, at fifty feet wide, said point being in the division line between Lots Nos. 64 and 65, Block 12, and located by the following three courses and distances, measured:

1. Beginning at a point on the Northwesterly side of Robinson Drive, at fifty feet wide, said point being in the division line between Lots Nos. 64 and 65, Block 12, and located by the following three courses and distances, measured:

BIRTHS

Mr. and Mrs. Jimmy Kessell, Bear, at the Delaware Hospital on October 5, a son.

Mr. and Mrs. Charles Lynam, Iron Hill, at the Wilmington General Hospital on October 6, a daughter.

Mr. and Mrs. Paul L. Schlosser, at the Delaware Hospital on Oct. 7, a son.

Mr. and Mrs. Leonard Kelleher, Bear, at the St. Francis Hospital on October 7, a daughter.

Mr. and Mrs. Rodney F. Bayer, Brookside, at the Delaware Hospital on October 7, a son.

Mr. and Mrs. Frances Morris at the Delaware Hospital on October 9, a daughter.

Mr. and Mrs. William Pawley, Jr., at the Delaware Hospital on Oct. 10, a daughter.

Mr. and Mrs. J. Paul Schorah, at the Wilmington General Hospital on October 9, a daughter.

Mr. and Mrs. Ralph F. Bow at the St. Francis Hospital on October 11, a son.

Mr. and Mrs. Claude Brooks at the Wilmington General Hospital on October 12, a daughter.

Mr. and Mrs. Frederick Rively at the Memorial Hospital on October 10, a son.

T/Sgt. and Mrs. Harry R. Ewing of 17 New St., are receiving congratulations on the birth of a son on September 26, in the Naval Hospital, Philadelphia, Pa. T/Sgt. is stationed at New Castle Air Force Base, New Castle.

The average American family spends a fourth of its food budget on meat.

George F. Reed

Mason Contractor
BRICK — BLOCK
STONE & CEMENT
WORK ESTIMATED

Phone 8-8407
Newark, Del.

Social Events

September Wedding



Mr. and Mrs. Eugene A. Reynolds
The wedding of Mr. and Mrs. Eugene A. Reynolds, son of Mr. and Mrs. Joseph A. Reynolds, and Miss Mary B. Reynolds, daughter of Mr. and Mrs. J. B. Reynolds, was celebrated on Saturday, September 18, 1954, at 4 o'clock in the morning at the Methodist Church, Rev. Harold B. Davis, officiating. The bride was given in marriage by her father, Mr. Eugene A. Reynolds. The groom is a member of the same church. The bride is a member of the same church. The wedding was a double ring ceremony. The bride wore a white gown with a full skirt and a long train. The groom wore a tuxedo. The ceremony was attended by many guests. The reception was held at the home of the bride's parents. The bride and groom are now residing at 1234 Main Street, Newark, Delaware.

Color in the Home Club Meeting
An informative discussion of "Color in the Home" was given by Miss M. Katherine Jones, county agent, at a recent meeting of the Glasgow Home Demonstration Club held this month at the home of Mrs. Norman Slack, Newark. The speaker discussed the importance of color in home decoration and presented several examples of well-blended color schemes. The meeting was held at 8 o'clock and was attended by many members and guests. The club is planning a similar meeting for next month.

Calendar
Friday, Oct. 15: 10:30 a.m. — Women's Auxiliary, 1st Presbyterian Church bake sale, Fader's card shop. 12:15 p.m. — D. Am. Colonists, Nazam's Tea House. Saturday, Oct. 16: 8:30 a.m. — YMCA classes, high school gym. 2 p.m. — S.S. Lake Needlework Guild, Ingathering, Pencader Presbyterian Church. 4 p.m. — Chicken and oyster supper, Ebenezer Church. 9:00 p.m. — Red Clay Church Youth Council Hayride. Sunday, Oct. 17: 11:00 a.m. — Salem M. E. Church Homecoming. 11:00 a.m. — White Clay Church Homecoming. 7:30 p.m. — Musicales, Hd. Christiana Presby. Church. Monday, Oct. 18: 8:00 p.m. — Pencader Grange, Glasgow. Tuesday, Oct. 19: 1:30 p.m. — Newark Needlework Guild Ingathering, at Kentway and 8, Col. Ave., home of Mrs. C. E. Douglas. 8:00 p.m. — Newark Kindergarten Association Bd. Mtg., at Wm. Lambert's, Univ. Apts. Wednesday, Oct. 20: 12:00 noon — Wimdousia H.D. club luncheon, Ferris Eastburn home. 4:30 p.m. — Christiana M. E. Church supply. 7:00 p.m. — YMCA Junior Dance Class, Main St. School Bldg. 7:30 p.m. — Harmony PTA Hall-lower Parry. Thursday, Oct. 21: 6:00 p.m. — Red Clay Church Women's Assoc. Circle 1, Family Night Supper. 7:30 p.m. — Hallow'en party, Glasgow M.E. Church.

D.A.R. TO SPONSOR ANTIQUE SHOW

Mrs. Charles I. Hoch, State Regent of the State Society, Daughters of the American Revolution, announces the State Society's sponsorship of the 26th Delaware Antiques Show, Inc., under the direction of Jean Stanier Wildrick (formerly conducted by Ethel Bell Stanier, Inc.) in the Gold Ballroom of the Hotel duPont, Wednesday, Thursday and Friday, December 1st, 2nd and 3rd, 1954. There will be an advance sale of tickets by the Daughters of the American Revolution, and the program for this outstanding Antiques Show will be sponsored by this patriotic organization, the proceeds from which will be used for the furnishing of a room authentically in the John Dickinson Mansion on Jones Neck. This mansion when completed will be the pride of all Delaware as a State Museum in memory of the American Revolution, Pennam of the Revolution, an early Governor of Delaware and the most outstanding States of his time. There will be many added features to the show, which will make it the outstanding Antiques Show of the year and one you will not want to miss. Mrs. W. Harman Money, Middleton, State Chairman of the Museum Committee and a member of the Elizabeth Cook Chapter, D.A.R., is General Chairman. Mrs. James Marsey is State Chairman of Ads and Programs, Mrs. Charles Peyton Witsil, State Chairman of Tickets, and Miss Anna Fraser, Newark, State Chairman of Hostesses. The General Committee, which is composed of Chapter Regents, Museum and Activities Chairmen, is as follows: Mrs. Ralph A. McCloskey, Mrs. Carl L. Wright, Mrs. David R. Eastburn, Sr., Mrs. Robert B. Davis, Mrs. Elisha S. Dukes, Mrs. J. Edwin Dunn, Mrs. Donald Woodward, Mrs. Willard J. Dufendach, Mrs. Robert J. Kennedy, Mrs. Harvey Bounds, Mrs. Thomas Cottingham, Mrs. T. Clarence Marshall, Mrs. Hoy S. Farrow, Mrs. George E. Chambers, Sr., Mrs. G. Marshall Townsend, Miss Hope Bennett, Mrs. J. Edwin Dutton, Mrs. Raymond Lloyd and Mrs. William R. Egan.



Engaged
Miss Joe Ann Love Jones
The engagement of Miss Jones has been announced to Mr. Donald L. Knauss, son of Mr. and Mrs. Oscar R. Knauss of Cleveland Avenue, Newark. Miss Jones is the daughter of Mr. and Mrs. Marvin L. Jones, Jones Spring, West Virginia. The wedding is planned for a date yet to be determined.

CHRISTIANA SUPPER
WED., OCTOBER 20
The Ladies of the Christiana Methodist Church will serve their annual poultry and oyster supper at the church on Wednesday evening, October 20. First table will be served at 4:30.

BAKE AND FOOD SALE
FRIDAY, OCT. 22
The Altar Society of St. John's R.C. Church will have a bake and food sale on Friday, October 22, in front of Abbott's Shoe Store. Selling will start at 11 A.M. Mrs. Francis Garvey is the chairman with Mrs. William Gregg and Mrs. John Seni as assistants.

Bride of Doctor



Dr. Robert Emmett Price, Jr.
His bride, the former Miss Joanne Hills Church, Milton, Mass. Mrs. Price is the daughter of Mr. Francis Joseph Harrington of Milton and the late Dr. Harrington and Dr. Price is the son of Mrs. Robert Emmett Price of 54 Winslow Road, Newark and the late Dr. Price.

AETNA AUXILIARY RECENT MEETING
Mrs. Elva Jester, president of the Auxiliary of the Aetna, Hose Hook and Ladder Co. presided at the meeting on Tuesday evening, October 5, and at that time named her committee for the year 1955. The drill team presented Miss D. Marie Gregg, past president, with a beautiful leather brief case with her initials engraved within. Miss Gregg, Miss Hanna Marsey, Mrs. Ruth Smith and Mrs. Elva Jester will meet with the firemen to make plans for a memorial for the late Chief Elmer J. Ellison. Miss Gregg gave a final report on the Fun fair.

HILLS ENTERTAIN AT DINNER ON ANNIV.
Mr. and Mrs. Ralph Hill of Kempsville who observed their wedding anniversary on Sunday, October 10, entertained at dinner honoring not only their own anniversary but that of Mrs. Hill's parents, Mr. and Mrs. S. C. McMullen and their son-in-law and daughter, Mr. and Mrs. Ben Stoltzfus. All three couples were married on October 10.

COLLEGE PARK—
New 6 rooms, bath, garage, parking, electric range. \$90.00. PAPER MILL ROAD—2nd floor Apt. 4 rooms, bath, stove and ref. Heat & water. Couple preferred. \$65.00. 4 MILES IN COUNTRY—Corner Ketch road, grand location. New ranch house, 3 bedrooms, garage, New school bus. \$125.00. E. DELAWARE AVE.—2nd floor Apt. 4 rooms, bath, Nov. 1st. \$65.00. CENTER OF CITY—Fine home. 4 large bedrooms, pink of condition. 1 yr. lease. \$125.00.

RENTALS
8 ROOMS AND BATH—College Park. Now available \$90 per mo. Phone 6310. BROOKSIDE PARK—3 bedrooms and bath. Living room with fireplace, kitchen and dining area, carpet and utility room. \$100 per month. New Real Estate and Insurance Co. Phone 546. FURNISHED 3 ROOMS, PRIVATE bath—Apply 263 E. Main Street. 10-14-11c.

PERSONALS
Mr. and Mrs. Isaac Boulden celebrated their 63rd wedding anniversary on Tuesday at their home, Beaver Valley Road, near Elam, Pa. The celebrants were married Oct. 5, 1891, in Newark, Pa. They made their home in Stanton and Wilmington before moving to Elam. Mrs. Boulden is 63 years old. Their children are Elwood, Roba, and Andrew of the same address. There are also seven grandchildren and two great-grandchildren.

PERSONALS (Continued on Page 6)
If anybody reports you to not be an honest man let your practice give him the lie. —Marcus Antoninus

PERSONALS
Mr. and Mrs. Isaac Boulden celebrated their 63rd wedding anniversary on Tuesday at their home, Beaver Valley Road, near Elam, Pa. The celebrants were married Oct. 5, 1891, in Newark, Pa. They made their home in Stanton and Wilmington before moving to Elam. Mrs. Boulden is 63 years old. Their children are Elwood, Roba, and Andrew of the same address. There are also seven grandchildren and two great-grandchildren.

PERSONALS
Mr. and Mrs. Isaac Boulden celebrated their 63rd wedding anniversary on Tuesday at their home, Beaver Valley Road, near Elam, Pa. The celebrants were married Oct. 5, 1891, in Newark, Pa. They made their home in Stanton and Wilmington before moving to Elam. Mrs. Boulden is 63 years old. Their children are Elwood, Roba, and Andrew of the same address. There are also seven grandchildren and two great-grandchildren.

PERSONALS
Mr. and Mrs. Isaac Boulden celebrated their 63rd wedding anniversary on Tuesday at their home, Beaver Valley Road, near Elam, Pa. The celebrants were married Oct. 5, 1891, in Newark, Pa. They made their home in Stanton and Wilmington before moving to Elam. Mrs. Boulden is 63 years old. Their children are Elwood, Roba, and Andrew of the same address. There are also seven grandchildren and two great-grandchildren.

PERSONALS
Mr. and Mrs. Isaac Boulden celebrated their 63rd wedding anniversary on Tuesday at their home, Beaver Valley Road, near Elam, Pa. The celebrants were married Oct. 5, 1891, in Newark, Pa. They made their home in Stanton and Wilmington before moving to Elam. Mrs. Boulden is 63 years old. Their children are Elwood, Roba, and Andrew of the same address. There are also seven grandchildren and two great-grandchildren.

CLASSIFIED

CARD OF THANKS
We wish to express our appreciation to the doctor and members of the kindness and consideration shown our father when he was so badly injured. The family of George A. Moore.

Lost
We wish to thank all those who sent flowers, the use of cars, and their expressions of sympathy when it was greatly appreciated. In the death of our father, George A. Moore. The family.

Found
FOUND—A BETTER WAY TO WASH your clothes. Use a Frigidaire Automatic Washer from Newark Electric Co., 180 E. Main Street. 10-14-11c.

Wanted
1000 RUGS TO CLEAN—Geo. F. Lane Rug Cleaners, 1206 Orange Street, Phone Wilmington 8-1535. 8-20-11c.

Situation Wanted
WASHINGS, DRESSINGS & BAKING. At my home, Phone 4-1046. Pleasant Valley Road, Alberts Brown, Pick Road, Newark. 10-14-11c.

Child Care
WILL TAKE CARE OF CHILD IN MY home while mother works 718 Sunnyside Circle. 10-14-11c.

Help Wanted
SALES LADIES—Full time, experience preferred. W. T. Grant Co., Newark. 10-14-11c.

WOMEN WANTED
Make extra money. Address, Mail postcards spare time every week. BICO, 143 Belmont, Belmont, Mass. 9-25-11c.

COOK AND KITCHEN HELP WANTED
Apply State Restaurant, Main Street, Newark. 10-14-11c.

WOMAN FOR HOUSEWORK
1 week and 2 days a week thereafter. Phone 6378. 10-14-11c.

MAID FOR CLEANING FRATERNITY
house 2 days a week. Phone 8-5969. Ask for H. 22. 10-14-11c.

PART-TIME SELLING
—Mao for Friday night, and Saturday 9:30 to 11:00. Apply Newark Department Store. 10-14-11c.

FEMALE TYPIST
—Preferably experienced. Apply personnel Dept., Continental Diamond Fire, Newark. 10-14-11c.

For Rent
APARTMENT—Furnished, 4 rooms and bath. Phone 2386. 7-15-11c.

LARGE BUILDING
—Suitable for factory, garage or warehouse. Wm. J. Barnard, Phone 1902. 9-2-11c.

TWO BEDROOM APARTMENT
—Newly decorated. Available anytime. Univ. Apts. Phone 3523. 8-26-11c.

UNFURN. APT.
—4 rooms and bath. Phone 8-2200. 8-26-11c.

1 & 2 BEDROOM HOMES IN FRIENDLY
Neighborhood. Elton, Md. 1 bedroom \$65. 2 bedrooms \$70. Phone Elton 1140. 8-26-11c.

APARTMENTS AND OFFICES
—Phone Mrs. Donovan, Newark 4201. 9-9-11c.

APARTMENT
—4 rooms, bath, stove, ref. and 2nd floor, priv. entrance. Phone 3723. 9-16-11c.

APARTMENT
—Centrally located, living room, dining room, kitchen, 2 bedrooms, 2 baths, heat, hot water and gas stove furnished. Immediate occupancy. \$85 per mo. Phone Elton 531. 8-12-11c.

ELLIOTT HEIGHTS
—1 room, bath, heat and hot and cold water. \$55.00. Move in immediately. Available Oct. 10. Lawson Starcher, Phone 6510. 8-12-11c.

NEW FLOOR APARTMENT
—3 rooms and bath. 11 Wilbur Street, heat, hot water, gas stove. Can partly furnish. \$60 per mo. Available Oct. 10. R. B. Davis, 54 E. Cleveland Ave. 8-12-11c.

8 ROOMS AND BATH
—College Park. Now available \$90 per mo. Phone 6310. 10-14-11c.

BROOKSIDE PARK
—3 bedrooms and bath. Living room with fireplace, kitchen and dining area, carpet and utility room. \$100 per month. New Real Estate and Insurance Co. Phone 546. 10-14-11c.

FURNISHED 3 ROOMS, PRIVATE
bath—Apply 263 E. Main Street. 10-14-11c.

Read The Newark Post—
Your Neighbor Does.

THE VOGUE
Hair Stylists
Permanents
\$10 up

It Takes 3 To Make 1
PAINSTAKING CARE
PROFESSIONAL SKILL
QUALITY INGREDIENTS

RHODES DRUG STORE
Professional Pharmacist
C. EMERSON JOHNSON, Prop.
Opposite State Theatre, Newark, Del.
Phone 581 — 2234 — Night Phone 8-1593

CLASSIFIED

For Rent
COUNTRY APARTMENT FOR 2. New detached, oil heat, \$55 per mo. incl. electric, 2 miles from Newark. Phone Landenberg 2231. 10-14-11c.

APARTMENT
—Furnished 4 rooms and bath. Also one unfurnished apt. Phone 2394. 10-14-11c.

APARTMENT
—Furn. 2 rooms and bath. Phone 4163. 10-14-11c.

NICE CLEAN ROOM
—Phone 4857. 10-14-11c.

LARGE BEDROOM
—Next to bath, oil heat, gentlemen preferred. Phone 3874 after 3:30 p.m. 10-14-11c.

RENT A TRAILER NOW
—Buy later under our lease purchase plan. Phone 8-1924. Briggs Mobile Homes. 10-14-11c.

For Sale
TOP SOIL, MUSHROOM SOIL, FILL dirt, bank gravel, crushed stone, Amelie driveways. Tinko Bros. Inc. Phone 8-271. 4-28-11c.

FRIGIDAIRE WASHERS, RANGES
Refrigerators. Newark Electric Co., 180 E. Main Street. Phone 4-1143. 2-4-11c.

SAVE 40 DOLLARS
—New 1954 East Spindler Washer, regular \$179.95. \$139.95. Newark Elec. Co., 180 E. Main Street. Phone 4-1143. 2-4-11c.

FULLER BRUSHES
—Call Don Picard Nwk. 7633 for service. 9-30-11c.

LOT
—100x200, 3/4 mile west of town limits, Newark. Phone 2228. 8-12-11c.

LARGE BLDG.
—Suitable for factory, garage or warehouse. Wm. J. Barnard, Phone 1902. 9-2-11c.

STONE FOR FOUNDATIONS AND WALLS
Cheap price. Phone Newark 8-1911. Sun Ray Farm, Nottingham Rd. 10-14-11c.

SEE OUR TRAILER-TYPE COTTAGES
For sale. Wm. J. Barnard, Phone 1902. 9-2-11c.

\$1.61 PER DAY
—Total cost food plan, Frigidaire freezer and four months' food for average family. Newark Electric, 180 East Main St. 10-14-11c.

PIANOS
—We just received our pianos for this excellent value—terms to suit you. If it is not too early to select your Christmas piano, we have a small deposit will reserve yours. For details see Edwin H. Barnes, 516 Row Street, Elton. Phone 334-W. 9-9-11c.

SAVE \$100.00
Automatic washer. Regularly \$229.95. Now \$129.95. Newark Electric, 180 E. Main. 9-30-11c.

SALE
—New 31" GE Television with wrought iron 346 Paper Mill Road, Elton. Phone 4201. 10-14-11c.

SMALL HERD OF SHEEP
(8) all ages. Phone 2547 or 8-1921. 10-14-11c.

THORNE SEED WHEAT
—Uncleaned. \$2.50 per bu. Conner's Farm Market, Glasgow. 10-14-11c.

ZENTH HEARING AID
—Phone 2346. 9-30-11c.

SOLID MAPLE DOUBLE BED
—Springs and beautiful mattress. Single mahogany bed, mattress and sofa. Mahogany chest. Phone 6060. 10-14-11c.

PERFECTION OIL HEATERS
—With Radiator. 346 Paper Mill Road, Elton. Phone 4201. 10-14-11c.

UPRIGHT CONWAY PIANO
—Good condition. Phone Newark 8-1233. 10-14-11c.

CORD WOOD
—Cheap. You haul it. Phone 8-1535. 10-14-11c.

1947 CHEVROLET
—4 door sedan, perfect mechanical. 4 door sedan, drive to appreciate. Rittenhouse Motors, Phone 4201. 10-14-11c.

1940 UTILITY PANEL
—A at only \$300.00. Radio and heater. Phone 4201. 10-14-11c.

1952 DODGE
—Radio, heater, low mileage. 3995.00. Rittenhouse Motors, Phone 4201. 10-14-11c.

THAT 1952 DODGE DIDN'T SELL LAST
year. You still have a chance to own it. Rittenhouse Motors, Phone 4201. 10-14-11c.

DINETTE SET
—4 chairs, table, table pads, lined oak. \$40. Phone 4201. 10-14-11c.

OWN ROOTED LILACS
—Many fine varieties \$2.00. Forsythia, \$1.00. Spreading, several kinds under \$1.00. Many fine ground covers and other choice low hardy plants. Sandy Brae Nurseries, Phone 4201. 10-14-11c.

BEACLE RUPPES
—7 weeks old. Call Nwk. 6326. 10-14-11c.

USED 16" BICYCLE
—With training wheels. Phone 7064. 10-14-11c.

BUNGALOW
—3 bedrooms, 2 baths, 2nd floor, 1000 sq. ft. of ground. 3307. 10-14-11c.

5-PIECE WALNUT BEDROOM SUITE
and quality gas stove. In excellent condition. Call Nwk. 3545. 10-14-11c.

\$149.00 LESS THAN EVER BEFORE
New Frigidaire Automatic Washer and dryer. Newark Electric, 180 East Main Street. 10-14-11c.

USED WASHER
—\$100.00 full price. Newark Electric, 180 East Main Street. 10-14-11c.

AUCTION SALE
—Frigidaire Automatic washer this week. Newark Electric, 180 East Main. 10-14-11c.

OPEN HOUSE THIS WEEK
—Refreshments and the best value you ever saw on Frigidaire, Refrigerator, Ranges and Automatic Washers. Newark Electric, 180 East Main. 10-14-11c.

100 SEX LINK PULLETS
—15 weeks old. Phone 8-3676. 10-14-11c.

MOSCOVY DUCKS
—Alive or dressed by order. Phone 4201. 10-14-11c.

WHIRLPOOL WRINGER WASHER
—1 year old. Reasonable. Call Newark 3545. 10-14-11c.

5-PIECE WALNUT DINING ROOM SUITE
or will break up. Call Newark 4018. 10-14-11c.

1943 PLYMOUTH
—Original owner. Only 47,000 miles, automatic clutch, 4 good tires, black 2 door, clean \$350.00. 31 Carlisle Drive, Brookside. Phone 6080. 10-14-11c.

10-PIECE DINING ROOM SUITE
—Good condition. Phone 8-1411. 10-14-11c.

BARRELS OF APPLE CIDER MADE
fresh each Friday. rd well blended apples and refrigerated immediately. A cold gallon in your container. Party rates lower. Chimes Farm Market, Glasgow. 10-14-11c.

VERY ATTRACTIVE OXFORD HOME
of 7 rms. & bath. Extra large living & dining room. 6 bedrooms. Strictly residential. Price very reasonable. Wheeler & Grier, Phone Oxford 409. 10-14-11c.

THRIFT SHOP OPENS FRIDAY, SEPTEMBER 17
Hours 10 to 4 and 7 to 9.

RADIOS REPAIRED
—358 South College Ave. Phone 8-8058. 8-26-11c.

PLUMBING, HEATING AND PUMP
repairs — Plumbing estimates cheerfully given. Wm. G. Wimmer, Rides Avenue, Roselle Park. Phone Newark 6784. 7-9-11c.

REFINISH YOUR OWN FLOORS
—Easily done with our High-Speed Floor Sander. Inexpensive. Newark Lumber Co. 8-9-11c.

CESSPOLES, SEPTIC TANKS
cleaned. Odorless excavating. Free estimates. R. J. West, Nottingham, Pa. R.D. 2. Phone Oxford 881-21. 1-15-11c.

PAPERHANGING
—All work guaranteed. G. J. Matthews, Christiana, Delaware. Phone New Castle 658. 10-14-11c.

YOU ARE MISSING A GOOD BET
If you don't see me at Newark Electric Company, 180 E. Main St., you are missing a good bet. Frigidaire Automatic Washer, Phone 4-1143. 1-15-11c.

SEE OUR PLUMBING DISPLAY AT
82 East Cleveland Ave. Plumbing, heating, electric supplies, pipe cut and brazed. A. M. Jack, Newark. 2-4-11c.

J. M. SINGLES
—Phone 4201, PLUMBING & HEATING. Pump, Solder & Service. RD 3, Potters Park, Newark, Del. 1-21-11c.

CLEANING OIL BURNERS
—Call Midway Plumbing. Phone 6784. 4-12-11c.

WE SHARPEN Saws, Knives, Scissors, blades, chisels, anything but your wife. Jackson's Hardware, 90 E. Main. 9-23-11c.

LAWN MOWERS SHARPENED & RE
paired. Phone 7066. 9-23-11c.

DOES YOUR BACK LOOK SICK
1 doctor. Myocles. Phone 8-8094. Ask for Elwin. 9-30-11c.

Rapid Photo Finishing

NEWARK CAMERA SHOP

49 East Main Phone 3463

BING'S PASTRY SHOP

Some Real Treats for the Weekend—

- CHEESE CAKE
- BLACK WALNUT CAKE
- DANISH PASTRIES
- BANANA BREAD
- BANANA CREAM PIES (Friday)
- RAISIN BREAD (Friday)
- BOPKA BREAD (Saturday)
- CHOCOLATE PIES (Saturday)

And lots and lots of other fine Pastries. Come in and see for yourself.

Phone 2226 and We'll Hold Your Order

Hen Champs Crush Owls 51-13 Before Record Stadium Crowd

Delaware Stops First Period Temple Threat To Command Contest As All American Don Miller Pitches Touchdown Pass To Apostolico, Runs Back Punt For 70-Yard Score

Little All-American Don Miller and Delaware's Little Giants put on a performance to compare more than favorably with the best of football's Mr. Bigs last Saturday, as the Fightin' Blue Hen champions stopped and stomped the Temple Owls 51-13 on the Delaware Stadium turf before the pleasantly stunned partisan portion of a record crowd.

Temple's big, burly starters gave every indication of providing a grim afternoon for Delaware, when the Owls drove to the Hen's seven yard line after recovering a fumble early in the first period. But one good fumble deserves another, and Guard Jerry Weiss recovered Temple's fumble to relieve the early threat to the Hen's end zone—and Delaware was off for their first of eight touchdowns.

Halfback Jimmy Flynn took Miller's hand-off to dash 44 yards to the Owls' 48 where Temple's Tex Robinson, racing diagonally across the field, laid a pair of heavy hands on the Flynn's shoulders.

Miller pitched to End Tom Redfield for a first down on the 28, and when Halfback Jimmy Zaiser and Fullback Andy Wagner advanced the ball to the eight yard line, Marty Apostolico took another Miller pass for the first Delaware score, and the Hens were on their way.

Delaware fans and chafing, sidelined Capt. Dan Ford really took heart when, still in the first quarter, Don Miller fielded a Temple punt on the Hens' 30, carefully checked, and swiveled his way for 70 long yards through 11 unfriendly Owls for the second touchdown.

A freshish touchdown early in the second quarter put Temple in temporary contention. At the tail end of a 59-yard penalty-aided march, Braccia, attempting to sneak from the 14, was hit hard, fumbled the ball, apparently dead on the one-yard line and covered by several Delaware blue shirts, somehow wound up in the possession of Temple End Tom King, the happiest man in the end zone, according to Bob Kelley, Tex Robinson, came through with the placement and, through for the first and last time, Temple was within striking distance at 12-7.

Play of the Day
Two minutes later, Miller, faking magnificently, cut to the sideline and, running at top speed, rifled a touchdown shot to Redfield in the open on the Temple 40. Redfield, performing like a Don Hutson, outran Robinson to the goal line for Delaware's third touchdown.

The Hens scored again when Miller's passing and Flynn's running featured the attack with Zaiser finally banging over from two yards out. Flynn put the ball between the uprights and it was 25-7 at the half. Temple managed to tally in the third quarter, Braccia finding the

STOCK CAR RACES
SUNDAY AFTERNOON
FIRST RACE 2:30 P. M.
3 FEATURE 3 RACES
25 LAP STOCK CAR RACE
15 LAP POWDER PUFF DERBY
15 Lap Amateur Novice Race
Box Office Opens 1:00 P. M.
Gen. Adm. \$1.25—Child, 50c

Get Your HUNTING LICENSE and SUPPLIES AT JACKSON'S
Rose Tree Races Media, Pa.
SATURDAY, OCTOBER 16, 2:00 P. M.
Rain or Shine
High class horses in thrilling flat, steeplechase and timber races. For reservations, address GEO. W. ORTON, Recording Secretary, Box 3, Media, Pa.
Phone: MEDIA 6-2869

WILMINGTON SPEEDWAY DUPONT HIGHWAY
26" Boys' and Girls' Shelby Special Bicycles in a beautiful flamboyant finish of either red or blue. The Shelby Special leads the way in good-looking, long-lasting, bicycle value at a lower price.

THE SPECIAL FEATURES A CHAIN GUARD AND KICKSTAND
This Week's Special \$36.95
FOR THREE DAYS ONLY
OCTOBER 14-16
Use Our Christmas Lay-Away Plan
JACKSON'S HARDWARE
90 E. Main St. Phone 4391

Shelby Special BICYCLES
26" Boys' and Girls' Shelby Special Bicycles in a beautiful flamboyant finish of either red or blue. The Shelby Special leads the way in good-looking, long-lasting, bicycle value at a lower price.

THE SPECIAL FEATURES A CHAIN GUARD AND KICKSTAND
This Week's Special \$36.95
FOR THREE DAYS ONLY
OCTOBER 14-16
Use Our Christmas Lay-Away Plan
JACKSON'S HARDWARE
90 E. Main St. Phone 4391

Jacquette Defeats McMinn In Finals Of Wright Tourney

Hugh Gallagher, Last Year's Winner, Tyler, Lose In Semi-Finals

Paul Jacquette won the E. B. Wright Memorial Golf Tournament at the Newark Country Club on Sunday as he defeated finalist Doug McMinn 3 and 2. The two contestants finished out their 18-hole final rounds with Jacquette carding a 79-12-67 while McMinn checked in with an 81 for a net 74.

In the E. B. Wright semi-finals, defending champion Hugh Gallagher was stopped by McMinn, 2 and 1, while Jim Tyler lost a 5 and 4 match to Jacquette.

Joe-Pro Aneda participated in the Pro-Pro and Pro-Amateur Partners' Tournament at Atlantic City on Monday and Tuesday, paired with Johnny Long, duPont Country Club professional, and Whitey Wester, Newark club amateur.

Aneda and Long carded a 36-34-70, but after 12 straight 4's and a 2, lost a good chance at the top prize with a four-over-par performance on the last 3-par holes.

Playing with Wester on Tuesday, the Newark pair checked in with a 37-37-74 over the par-72 course to finish out of the money.

The Duck Hunters' Tourney is scheduled to be played the week of Oct. 30, with the annual golf banquet to be that Saturday night.

POSTED

A conventional Delaware large-mouthed bass that has attained a weight of 3 1/2 pounds is a rare prize, but a crappie—weighing in at 3 1/4 pounds—is a fabulous fish.

We've never seen—much less caught—a crappie within a pound and a half of that weight, and yet seven-year-old Johnny Bowser came up with a 3 1/4 pounder at Newark's Sunset Lake last Sunday.

Fishing with his father, Walter R. Bowser, young Johnny, a flatfish from a bait-casting rod in a rowed boat in the open water at the south-west corner of the pond.

Eye-Opener
"I couldn't believe my eyes when I first saw that fish," the proud father relates. "And when that crappie-bass first saw us, it took off with a swirl and a rush that took line off the reel and skin off my boy's knuckles when the reel spun in reverse."

Any veteran angler would have been considerably shaken at the first glimpse of the enormous crappie—and the chances are good that the fish would have won the contest as a result of a topside error at some crucial point in the match.

But Johnny—whose status as a veteran angler is limited only by his youth—was more than equal to the occasion, and despite a handful of bleeding knuckles and a mouthful of excitedly thumping heart, he fought the fish to a final finish.

Conventional landing nets aren't designed to accommodate 3 1/2 pound crappies, and Dad had his hands—and net—full before the great silver-gold, mottled green and blue slab of flopping fish was safely garnered from Sunset Lake to the rowboat bottom.

Real Praise
Johnny received his accolade when Walter Powell said to him: "Son, I'd like to go fishing with you."

Walter Bowser, while he hasn't come up with any 3 1/4 pounders, has been knocking off the Sunset Lake crappie with regularity in recent weeks. And along with the fish, he has been collecting some nice bass and pickerel.

Fishing with Doc Bregman, Walter patiently endured some intense shoreline casting that resulted in the fish being bugged and eventual frustration.

"Now, let's try it my way," he grinned to his companion, and, trolling with flatfish in the deep, open water, the two took 12 big crappie in fairly short order. The doctor was convinced.

On The Ocean
Out on the bounding Main last weekend, a party of 12 male members of the Newark public school faculty had a field day with sea bass and porgies out of the Indian River Inlet.

Fishing with Capt. Frank Salerno in the "Delaware" the educators came up with 24 fish, mostly sea bass with a sprinkling of porgies and three big sharks—and provided seafood for at least two other members of the school staff in Mrs. Clara Truitt and Mrs. Elizabeth Young.

Mrs. Young, who does a bit of fishing in Sunset Lake with Mr. Young and the rest of the family, particularly welcomed a taste of fish for a change. This was BB—Before Bowser.

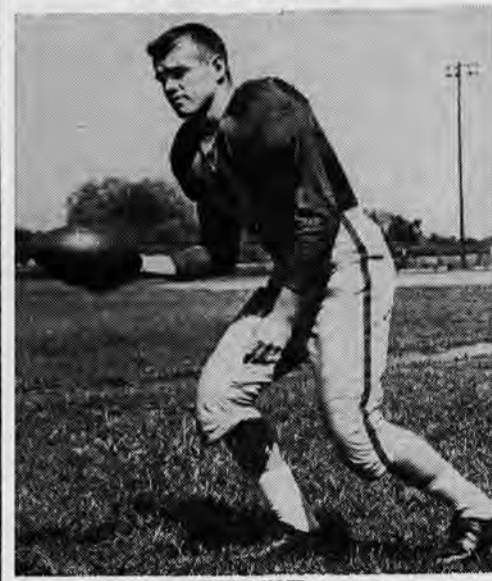
Epidemic
Anglers aboard the "Delaware" were Gilmore Ott, George Nickle, Fred Kutz, Miles Coverdale, Elwood Bittenbender, Wilmer Shult, Bill Morrison, Stewart Bennett, Henry Brader, Eugene Smith, Andrew Marcantonio and Hy Miller—and according to an eye witness, a substantial portion of the crew was stricken with an epidemic of mal-de-mer.

One sufferer, reclining and rolling in the seapumpers astern, came back to life in a hurry when Miles

THE NEWARK POST

The Newark Post, Newark, Delaware, Thursday, October 14, 1954

All-American Performance



DON MILLER Delaware Quarterback
A major factor in Delaware's crushing defeat of the Temple visitors last Saturday, this 5-10, 165-lb. senior quarterback from Prospect Park, Pa., is due for a large promotion from his position on last season's Little All America third team. Don Miller's touchdown return of a Temple kick in the first quarter, and his running line, was football at its best.

BOWLING SCORES

Bowling balls are again rumbling down the hardwood alleys, the maples are thundering, pin boys are back in business—Morris Adams is smiling once more—and five leagues are rolling at the Newark Bowling Academy on Main Street.

Monday Night League		Won	Lost
Elkton VFW	12	0	1
Buck's Texaco	8	4	4
Continental Fibre	6	6	6
Friendly Five	6	6	6
Hitchens' Texaco	5	7	8
Chrysler	4	8	7
Union Aces	3	10	10
Palati Carley	1	8	10

In the Monday Night, 8-team league, J. Beers was high man with a top 214 single and high series 537 for Hitchens' Texaco Service, while the league-leading Elkton rolled the high team scores with a single 879 and series 2541.

Tuesday Night League		Won	Lost
Calvert	8	1	1
Newark	7	2	3
Continental	6	4	4
K. of P.	5	4	4
Avon	4	5	6
Curtis Paper	3	6	6
T. N. T.	2	8	8
Tanglers	2	7	8

Bob Hopkins, whom Morris Adams terms the "hottest bowler in town" checked in with the high single 232, while C. Lomax registered the series 585. Sixth place Curtis Paper jolted the lead-rolled the high team scores with a single 879 and series 2541.

Girls' Major League		Won	Lost
Newettes	15	1	1
Newark Pharmacy	13	1	1
Continental	13	3	3
Country Club	7	9	9
Sunoco	5	11	11
Eagles	4	12	12
Rustle Inn	4	15	15

Ann Dunn, of the tied-for-top-running Pharmacy girls, bowled the high single 187 and series 538, while the first place-sharing Newettes scored series 2159.

Friday Night League		Won	Lost
Ebenezer Church	9	3	3
Midway Plumbers	8	4	4
Lucky Strikes	7	5	5
Colts	7	5	5
Lions Club	7	5	5
Masons	4	8	8
Newark Lumber	3	9	9
Oscola Lodge	3	9	9

Robert Hopkins, rolling for the Midway Plumbers, tossed the high series 605 and top single 223, while the tied-for-third Colts bowled the high single 942 and high series 2756.

ROSE TREE RACES
An especially large crowd is expected to attend the Rose Tree Races on Saturday at Media, Pa. The Rose Tree meeting will have the only hunt races in this section this fall.

Coverdale hooked a big, splashing shark and threatened to haul the brute into the cockpit, aft.

Waterfowl
With Delaware's migratory waterfowl hunting season opening Nov. 1 at noon, local duck hunters are developing a far-away look of anticipation.

With George Wiggins and Gibby Young, recently toured the Elk River and flushed squadrons of black duck and mallard from the marshes beside the narrow thoroughfares.

Aside from seeing ducks in the air again, that was some ride. A combination of five horseback riding and flying—speed, spray—and lots of bounce.

Ray Ott reports more geese than ducks down around the Elk, and Mickey Palumbo announces that thousands of Canadian honkers have settled down around his secret claim on the Chester River.

How about it, Mick boy, old friend?
In the statement of the year, Canvaaback Harold Stanley announced: "I'll be too busy to do any duck hunting this season."

Ed Oliver's Team Tops Douglas Duo In Best Ball Play

Davey, John Long Stopped By Snowball, Teri Johnson In Exhibition, 2 and 1

The team of Ed Oliver and Teri Johnson edged Dave Douglas and John Long 2 and 1 in an 18-hole best-ball match Saturday at the duPont Country Club. Douglas and Johnson scored even 71's, while Oliver and Long each had a 72.

Long, the duPont assistant pro, stole the spotlight in the early stages when he birdied the first and fourth holes and toured the front nine in 33, two under regulation.

Neither Douglas nor Oliver were in top form and the effect of weeks lay-off of the past several weeks was evident. At times, however, they did display the form that makes them two of the most feared players on the play-for-pay circuit.

A clinic was held prior to the match and the colorful Oliver delighted the crowd with his demonstration of topped shots, shanks, hooks and slices, while Douglas stuck to showing the fans the correct way to hit the ball.

Capt. Walt Handel To Lead Freshmen In Friday Opener

Delaware's freshmen Blue Chick gridders have elected Left Guard Walt Handel captain for the first game with Lehigh here Friday, Coach Jim Sullivan announced yesterday.

Handel, a 6-1, 194 pounder from Philadelphia, will captain the squad for the opening game only, with a different leader to be chosen for each of the other three contests. Handel won a berth on the All-Public School Philadelphia City team and honorable mention All-Scholastic as a high school football player.

Handel will join with Baltimore's Dick Aufarth as starting guards. The remainder of the starting line-up is Arthur Kretz, left end; John Pollack, left tackle; Jim Faciotti, center; Joe Harvanick, right tackle; Ray Heal, right end; Larry Catuzzi, quarterback; Jim Roe, left halfback; Tony Tolt, right halfback; John Walsh, fullback.

Laurel To Open Saturday For 15-Day Race Meeting

Fall racing in Maryland will begin on Saturday when Laurel opens a 15-day meet that will be highlighted by the third running of the \$65,000 Washington, D.C. International.

NEA CAGE PLAY
Ray Ciesinski has announced that Newark Recreation Association Basketball League play will start early in November. All team managers are requested to call Mr. Ciesinski at Newark 7392 for league entry.

PICKS FROM THE SPORTING NEWS
TV GAME OF THE WEEK
Michigan over Northwestern
Detroit over Villanova
Florida over Kentucky
Nebraska over Oregon State
Rice over Southern Methodist
Wyoming over New Mexico
Wisconsin over Purdue
Colorado over Iowa State
SPECIAL
Duke over Army

Michigan over Northwestern
Detroit over Villanova
Florida over Kentucky
Nebraska over Oregon State
Rice over Southern Methodist
Wyoming over New Mexico
Wisconsin over Purdue
Colorado over Iowa State
SPECIAL
Duke over Army

Jim—or Dusty—had many a hitting feat in the season, including the series with Brooklyn June 29 through July 1 which the Giants swept, thanks to Rhodes' timely hitting. Twice he delivered timely hits that produced the winning tallies.

And that's the player whom a former Knoxville manager—Jack Armer—says bows to none in having confidence in his own ability.

Already a Hero
Rhodes, of course, was quite the hero long before he belted the seventh homer off Bob Lemon in the tenth inning of the first game of the Series—to say nothing of vital singles in the second and third games to make it three-out-of-three as pinch swinger. And that's not counting the extra homer he added after he took over the left field position.

Rhodes was one of the most dramatic pinch-hitters in history as a pinch hitter. He pinch-hit in 14 games, with one or another of them taking the hero's role.

But Rhodes got himself a nice chunk of dough to spend this winter by doing some thinking last winter about his future. In 1953, he hit 113 homers and drove in 30 runs in 163 times at bat, but averaged only .233.

Improvement
"I knew my record wasn't good enough," Dusty told THE SPORTING NEWS publisher. "And I didn't want to get sent down from the majors because it took me long enough to get up here and it's not easy to come back." So he decided to take a tip from his fellow outfielder, Don Mueller, and try to meet the ball instead of murdering it.

The result was that Rhodes began to get his hits more regularly. From May 24 through July 1, he made seven pinch-hits in 14 tries.

Hall Hurt As Yellowjackets Trample Mt. Pleasant, 32-0

Newark Co-Captain Breaks Collarbone With Run For Miller's Touchdown; Klapinsky, Money, Score For Third Topheavy Win Of Undefeated Season

Newark's inherited All-State Halfback Keny Hall ferred a broken collarbone in the second quarter of Saturday afternoon's game with Mt. Pleasant as the Yellowjackets won a costly contest from the Green Knights by the heavy score of 32-0 for their third victory of an undefeated season.

Co-captain Hall was injured in making a key play when Halfback Keny Hall straight up the middle line into the end zone where Yellowjackets forward was running. Klapinsky, Zaiser and Larry Blumstein, running back, took the end zone. Early in the third period of the Mt. Pleasant game, Hall took a big hit from a backfield player.

Coach Scotty Duncan said yesterday that Hall will be out of action for at least three weeks, and perhaps for the remainder of the season.

Scoreless Quarter
Ron Hayman, guard, kicked off for Newark as the game began, and for the first quarter it was pretty much an even thing. Mt. Pleasant's halfbacks Slattery and Wirt did a lot of running wide around the flanks, but even so, the Knights were able to register two first downs, penetrating only as far as the Yellowjackets' 25-yard line.

In the second period, with their defense throttling the Knights' threatening halfbacks Newark's offensive forces began to move. Early in the quarter, End Ray Klapinsky, intercepted a screen pass, and with Tackle Mark Horn blocking out two Mt. Pleasant players on the 10-yard stripe, Klapinsky ran 35 yards for the first Newark touchdown.

The Yellowjackets failed to kick the extra point, but collected six big ones when Shew passed to Miller for a touchdown from the Mt. Pleasant 40, and Hall was hurt in providing blocking insurance.

Newark rang up their third touchdown in the same quarter when Miller's passing and Flynn's running featured the attack with Zaiser finally banging over from two yards out. Flynn put the ball between the uprights and it was 25-7 at the half. Temple managed to tally in the third quarter, Braccia finding the

Choquette Checks In With Speedway 6th Feature Win

Jack Choquette of Lake Worth, Fla., scored his sixth main event victory of the Wilmington Speedway way season Sunday night before a small crowd of 1,400 stock car fans.

Choquette, who is leading in the race for the national modified division championship, out-finished the veteran Pee Wee Pobletts of Baltimore in the 25-lap feature, running third.

Erv Streets of Wilmington turned in a top effort, taking first money in his heat, third place in his semi-final and the runner-up award behind Pobletts in a special match race involving winners of preliminary events.

This Sunday the Speedway will initiate its afternoon racing schedule and, for the remainder of the season, all races will be conducted in the afternoon.

Turkey Shoot

SPONSORED BY WILLOW GUN CLUB
1:00 P. M.
SATURDAY, OCTOBER 16
at the
Rifle Range - Out's Chapel Road
Near Out's Chapel

What's the Truth About Car Values Today?

Yours Free

The Amazing Car X-Ray That Can Save You Hundreds of Dollars on Your Next New Car

No MATTER what cars you may be considering, come in today and get your free copy of this amazing new car X-Ray.

Now for the first time you can get all the data on all the cars—all 16 leading makes. Shows you how they are built. The weak points. The strong points. Hidden details never revealed before. It's the book that only Nash dared to print!

Your Nash dealer will be happy to give you your copy, without any obligation whatsoever.

GET YOUR FREE 20 PAGE COPY TODAY AT YOUR NASH DEALER'S
Nash Motors, Division of American Motors

Dennison Motor Co.—19 Haines St., Newark, Del.—Phone 4391

Christiana Calling

Sylvia P. Jones, Correspondent
Phone: New Castle 7413

The Methodist Social will serve its annual chicken and oyster supper for the benefit of the Christiana Methodist church next Wednesday, Oct. 20. First table is scheduled for 5 p.m. and cakes, candy, and fancywork will be on sale. Mrs. Louis Stafford is general chairman.

The Helpers Club will meet this Saturday evening at 7 o'clock in the Methodist church.

Instead of holding the regular worship service in the Methodist church this Sunday, the congregation will join the Salem Methodist church in observation of its annual Harvest Home. Services will be held in the morning, afternoon, and evening at Salem, with lunch and supper served in the church.

The Joy Circle of the WSCS met last Tuesday evening at the home of Mrs. Wilmer Hawthorne. Mrs. Lucille Hawkins was hostess to the Hope circle on the same day. The next meeting of this group will be held at the home of Mrs. Eastburn. Mrs. Ada Ware will have charge of devotions, and recreation will be arranged by Mrs. Cannon.

Homecoming Day at Christiana Methodist church has been announced for the first Sunday in November. Three services will be held throughout the day, and all friends of the church are invited to spend as much time as possible at this annual program.

Lovely fall weather contributed to the success of the Homecoming Day observance by the Christiana Presbyterian church last Sunday. Friends and former members of the church, many from quite a distance, turned out for both the morning and afternoon services. About 75 enjoyed the chicken salad luncheon served in the church at noon.

The regular monthly meeting of the trustees of the Presbyterian church is scheduled to be held tonight at 8 o'clock in the church.

Scout News
Now that children have had time to adjust to school schedules and demands, scouting activities are moving into high gear. Four levels of scouts are represented by Christiana troops this year. Beginning this week, Brownie Troop 151 will meet at the home of Mrs. Howard Schulz.

Boy Scout Troop 75, which is already operating energetically under the leadership of Donald McLaughlin, has completed a most successful sale of light bulbs, which will be delivered Oct. 23. Last Saturday the boys spent some time canvassing the town for orders, and then returned to the industry by enjoying a hike in the fall sunshine. As its prime goal deed for this week, the group plans to cook

lunch for a demolition crew which will tear down an old barn behind the Methodist church.

At a Boy Scout troop committee meeting last Wednesday evening plans were discussed for the fall and winter Scout activities. One of the first events on the calendar will be a troop trip to Camp Rodney in November.

Mrs. Sarah Fraser's sixth grade class at the Christiana-Salem school has elected club officers in President Barry Colbert; Vice-president Joyce Hutchison; Treasurer Danny Rineer; Secretary Barbara Perry; and Program chairman Don Widgren.

The first issue of the sixth grade newspaper, "Christiana Bulletin," went on sale throughout the school last week. On the staff are Margaret Reardon, editor; Marilyn Sewell, sub-editor; James Canine, chief reporter. This bi-weekly report includes original poetry, riddles, cartoons, and news from each grade.

The Christiana School will be closed on Oct. 21-22, while teachers attend the annual Delaware State Education Association meetings.

Square dance enthusiasts are recommended to hold open Friday evening, Oct. 22, when the Christiana-Salem PTA will sponsor a square dance for adults in the school auditorium.

Well to the fore among the cheering spectators at Newark High will be found two loyal Christiana couples—Mr. and Mrs. Roger Wool-eyhan and Mr. and Mrs. C. S. Kleinbach. We don't blame them. Daughter Elizabeth Woolleyhan is a cheerleader and son Jon Kleinbach is a member of the team. Shelia Laws of Christiana is also a pert majorette for Newark High.

Last Registration Day
Voters of this area are reminded that this Saturday, Oct. 16, is the last registration day before the November elections, and everyone is required to register this year in order to vote.

Mrs. A. S. Priestley, chairman of the Voters' Service of the Newark League of Women Voters, has announced that non-partisan information on voting will gladly be given to those who are uncertain of their district or polling place. In this area, call Mrs. Priestley (phone Newark 8-1954) or Mrs. Howard Greene (phone New Castle 2367) for any information and voting.

The first fall meeting of the Christiana Improvement Association was held last Tuesday evening in the meeting house. Mrs. Elsie Thorp, president, presided, assisted by Mrs. Gilbert Barlow, acting secretary. The next meeting is scheduled for Nov. 2 and all members are urged to attend.

Personals
Mrs. Levenia Barlow and Mr. and Mrs. James Barlow of Grubb's Road, Brandywine Hundred, were Sunday guests of Mr. and Mrs. Gilbert Barlow and family.

Mr. and Mrs. John Currinder and family visited Mr. and Mrs. Pappas in Clayton last Sunday.

Sunday visitors of Mrs. A. B. Currinder were Francis Burris of Penns Grove, Mr. and Mrs. Robert Stoddard, and Mrs. Lillian Burris and children of Wilmington.

Mr. and Mrs. Joseph Phillips left Friday for a three weeks' stay in Miami, Fla.

Mr. and Mrs. Francis J. Thomas, Sr., have announced the engagement of their daughter, Louise Amy, to James H. Mackie, son of Mr. and Mrs. Henry M. Mackie of Fair Hill, Md. Miss Thomas, a 1954 graduate of Newark High School, is employed by the DuPont Company. Mr. Mackie is a graduate of Elkton High School and is working with his father. The couple plans a spring wedding.

Gilbert Barlow and Charles McGall, Newark High School agriculture students, recently attended the Eastern States Exposition in Springfield, Mass., and participated in dairy products and poultry judging contests. The trip was made by car with instructor William Kent.

State AAUW To Conduct Workshop This Saturday

The Delaware state division of the American Association of University Women will hold its fall workshop in the Fine Arts building of Wesley Junior College, at Dover, on Saturday, October 16.

The workshop is to provide material and information for the year's work to the various Delaware branches.

The workshop will begin at 9:30 a.m. with registration and a coffee hour when members of the Dover branch will serve as hostesses. After coffee there will be a general meeting until noon luncheon. The afternoon session will be devoted to smaller group discussions, until 3:15 p.m. Reservations for the workshop may be made with Mrs. Anne H. Longenbach, Newark.

Membership Drive Planned By League For Current Month

League Of Women Voters To Conduct New Member Campaign During October

October is the month for the annual Newark League of Women Voters membership drive. Anyone interested in joining or learning about the league should call Mrs. James L. Anderson, chairman of the membership committee, phone 8-8195, or Mrs. Robert H. Miller, Brookside, phone 6820, who will either send literature or call.

Mrs. Anderson states: "Every league member is on the membership committee, in fact, if not in name. New members are welcome at any time during the year."

The Newark league, a branch of the national league in Washington, is a non-partisan organization to help develop informed, enlightened, responsible citizens. The league may take action on governmental measures and policies but may not support or oppose any political party or candidate.

Unit meetings for the current season started last week. A team of six league members—Mrs. Samuel Handloff, Mrs. James L. Anderson, Mrs. Howard Greene, Mrs. Lewis Hoffman, Mrs. J. H. McClelland, and Mrs. T. A. Baker—went to each of the four meetings to explain the league's policies and functions to new members.

Mrs. John G. Lee, president of the national league, will speak at the Newark league's first general meeting of the season on Oct. 23, in the Newark elementary school gym, at 8 p.m. The public is invited.

Former Resident, Local Instructor Dies In Hospital

A former resident and Newark School teacher, Mrs. Margaret Rupp McCarthy, 51, wife of James R. McCarthy, Sr., 702 Woodside Avenue, Phillips Heights, died last Thursday in University of Pennsylvania Hospital, Philadelphia, where she had been a patient 12 days.

Born in Somerville, Mass., she came to Newark as a child, was graduated from Newark High School and attended the University of Delaware.

Mrs. McCarthy taught in public elementary schools in the Newark area for a year until her marriage in 1923.

In addition to her husband she is survived by a son, Dr. James R. McCarthy, Wilmington physician; two daughters, Mrs. Joseph L. Ackerman, Wilmington, and Mrs. John J. Murray, Willow Run; two brothers, Joseph F. Rupp, Wilmington, and James F. Rupp, Dayton, O., and seven grandchildren.

Requiem mass was said in St. Helena's Catholic Church, Bellefonte, Saturday morning with interment in St. John's Cemetery, Newark.

Harry Poole Dies At Newark Home; Funeral Tuesday

Harry E. Poole, husband of the late Clara Wiswell Poole, died Thursday at his home, 309 Capitol Trail, Newark.

A retired paper finisher for Curtis Paper Company, Mr. Poole was born in Pennsylvania and lived in Newark 60 years. He was a member of Newark Methodist Church.

Mr. Poole lived with three sisters, Mrs. George Curtis, Mrs. Mary Willis, and Mrs. Florence Rupp, and is also survived by another sister, Mrs. John Cordrey, Wilmington; two brothers, Albert and Clyde Poole, Elliott Heights; a niece, and two nephews.

The Rev. Dr. John J. Bunting, pastor of Newark Methodist Church, officiated at funeral services Tuesday afternoon in the parlors of R. T. Jones, Newark. Interment was in Newark Cemetery.

Governor J. Caleb Boggs has set aside the week of October 18 through 24 as National Bible Week in Delaware, and expressed the hope from his executive offices in Dover "that daily Bible reading may become a habit of all of us and that through this inspiration we shall all achieve a greater understanding and respect for our fellow citizens."

Governor Boggs pointed out that in these troubled times more and more people are seeking a means of consolation and comfort, and he said that "further reading and study of the Book of books will tend to bring greater understanding to all mankind."

Sarah E. Everett Funeral Services Held Last Sunday

Funeral services for Mrs. Sarah E. Everett were held Sunday in the R. T. Jones Funeral Home, Newark, with interment in Crumpton, Md. Widow of Michael Everett and resident of Newark for the past four years, she died last Thursday after a long illness.

Survivors include seven children: Medford M., Mrs. Clyde Crow, Mrs. Homer Starkey and Mrs. Nick Yednick, all of Newark, and Mrs. Clara Stoops of Crumpton, Md.; Mrs. Benjamin Henderson of New Castle, and Louis, also of Newark.

There are also two brothers, John Blackston of Pottstown, Pa., and Thomas T. Blackston of Queen Anne County, Md.; there are also 26 grandchildren and 13 great-grandchildren.

Farm Real Estate Values Drop 5% From 1953 Peak

Delaware farm real estate values have doubled since World War II but appear to have hit their peak during the summer of 1953. Since that time they have declined about five percent.

The greatest decline in land values is in the mountain states and

the states in the drought areas. Colorado showed the greatest drop of 22 percent, with Idaho and New Mexico each down 17 percent. Many of the eastern seaboard states show declines ranging from two six percent.

Voluntary sales of farm real estate declined during the year. The volume of foreclosures increased slightly but in most states remained at a low level.

"CLIMAX!"

TONIGHT 8:30 to 9:30

CHANNEL 10

ETHEL

BARRYMORE

DENNIS

O'KEEFE

IN "THE 13TH CHAIR"

PRESENTED BY CHRYSLER CORPORATION

Lanolin Plus
ALL OVER
BODY LOTION
For Dry Skin
\$1.50 Plus Tax

WHEN YOU THINK OF TOILETRIES—THINK OF RHODES—
At our cosmetic counters you will find all the famous name brands including—ELIZABETH ARDEN — YARDLEY — SHULTON — DOROTHY GRAY — LENTHERIC — HAZEL BISHOP.

RHODES DRUG STORE
Professional Pharmacist
C. EMERSON JOHNSON, Prop.
Opposite State Theatre, Newark, Del.
Phone 581 — 2234 — Night Phone 8-1593

VETS! Use Our NO DOWN PAYMENT PLAN

NON-VETS! Less Than \$2,000 Down

\$85.00 per mo.

will pay your MORTGAGE, city, county, & school TAXES, fire INSURANCE with extended coverage.

COME!!! SEE!!!

25 HOMES

Available For

IMMEDIATE POSSESSION



Why Not ENJOY All This For Your Holiday and Your Future?

The proper size family home - 4 large bedrooms & 2 baths

Real warmth this winter - baseboard hot water heat (oil)

A poured concrete, full basement (guaranteed dry)

A large living room with pine panelling.

A modern step-saver kitchen — See It!!

A readily salable home in the best part of Newark.

BINNS NEWARK HOMES

ELKTON ROAD, IN THE CITY OF NEWARK, DELAWARE

Sales Manager, John S. Lake

Phone NEWARK 6351

Century Club Hear Political Speaker

The Century Club will meet Oct. 18, at 1:30 p.m. at the Century Clubhouse, with Dr. J. T. Tucker, a new member, as guest speaker.

The speaker will be on "International Affairs."

The speaker will be on "International Affairs."

The speaker will be on "International Affairs."

The speaker will be on "International Affairs."

The speaker will be on "International Affairs."

The speaker will be on "International Affairs."

The speaker will be on "International Affairs."

The speaker will be on "International Affairs."

The speaker will be on "International Affairs."

The speaker will be on "International Affairs."

The speaker will be on "International Affairs."

The speaker will be on "International Affairs."

The speaker will be on "International Affairs."

The speaker will be on "International Affairs."

The speaker will be on "International Affairs."

The speaker will be on "International Affairs."

The speaker will be on "International Affairs."

The speaker will be on "International Affairs."

The speaker will be on "International Affairs."

The speaker will be on "International Affairs."

The speaker will be on "International Affairs."

The speaker will be on "International Affairs."

The speaker will be on "International Affairs."

The speaker will be on "International Affairs."

The speaker will be on "International Affairs."

The speaker will be on "International Affairs."

The speaker will be on "International Affairs."

The speaker will be on "International Affairs."

The speaker will be on "International Affairs."

The speaker will be on "International Affairs."

The speaker will be on "International Affairs."

The speaker will be on "International Affairs."

The speaker will be on "International Affairs."

The speaker will be on "International Affairs."

The speaker will be on "International Affairs."

The speaker will be on "International Affairs."

The speaker will be on "International Affairs."

The speaker will be on "International Affairs."

The speaker will be on "International Affairs."

The speaker will be on "International Affairs."

The speaker will be on "International Affairs."

The speaker will be on "International Affairs."

The speaker will be on "International Affairs."

The speaker will be on "International Affairs."

The speaker will be on "International Affairs."

The speaker will be on "International Affairs."

The speaker will be on "International Affairs."

The speaker will be on "International Affairs."

The speaker will be on "International Affairs."

The speaker will be on "International Affairs."

The speaker will be on "International Affairs."

The speaker will be on "International Affairs."

The speaker will be on "International Affairs."

The speaker will be on "International Affairs."

The speaker will be on "International Affairs."

The speaker will be on "International Affairs."

The speaker will be on "International Affairs."

The speaker will be on "International Affairs."

The speaker will be on "International Affairs."

The speaker will be on "International Affairs."

The speaker will be on "International Affairs."

The speaker will be on "International Affairs."

The speaker will be on "International Affairs."

The speaker will be on "International Affairs."

The speaker will be on "International Affairs."

The speaker will be on "International Affairs."

The speaker will be on "International Affairs."

The speaker will be on "International Affairs."

The speaker will be on "International Affairs."

The speaker will be on "International Affairs."

The speaker will be on "International Affairs."

The speaker will be on "International Affairs."

The speaker will be on "International Affairs."

The speaker will be on "International Affairs."

The speaker will be on "International Affairs."

The speaker will be on "International Affairs."

The speaker will be on "International Affairs."

The speaker will be on "International Affairs."

The speaker will be on "International Affairs."

The speaker will be on "International Affairs."

The speaker will be on "International Affairs."

The speaker will be on "International Affairs."

The speaker will be on "International Affairs."

The speaker will be on "International Affairs."

The speaker will be on "International Affairs."

The speaker will be on "International Affairs."

The speaker will be on "International Affairs."

The speaker will be on "International Affairs."

The speaker will be on "International Affairs."

The speaker will be on "International Affairs."

The speaker will be on "International Affairs."

The speaker will be on "International Affairs."

The speaker will be on "International Affairs."

The speaker will be on "International Affairs."

The speaker will be on "International Affairs."

The speaker will be on "International Affairs."

The speaker will be on "International Affairs."

The speaker will be on "International Affairs."

The speaker will be on "International Affairs."

The speaker will be on "International Affairs."

The speaker will be on "International Affairs."

The speaker will be on "International Affairs."

The speaker will be on "International Affairs."

The speaker will be on "International Affairs."

The speaker will be on "International Affairs."

The speaker will be on "International Affairs."

The speaker will be on "International Affairs."

The speaker will be on "International Affairs."

The speaker will be on "International Affairs."

The speaker will be on "International Affairs."

The speaker will be on "International Affairs."

The speaker will be on "International Affairs."

The speaker will be on "International Affairs."

The speaker will be on "International Affairs."

The speaker will be on "International Affairs."

The speaker will be on "International Affairs."

The speaker will be on "International Affairs."

The speaker will be on "International Affairs."

The speaker will be on "International Affairs."

The speaker will be on "International Affairs."

The speaker will be on "International Affairs."

The speaker will be on "International Affairs."

The speaker will be on "International Affairs."

The speaker will be on "International Affairs."

The speaker will be on "International Affairs."

The speaker will be on "International Affairs."

The speaker will be on "International Affairs."

The speaker will be on "International Affairs."

The speaker will be on "International Affairs."

The speaker will be on "International Affairs."

The speaker will be on "International Affairs."

The speaker will be on "International Affairs."

The speaker will be on "International Affairs."

The speaker will be on "International Affairs."

The speaker will be on "International Affairs."

The speaker will be on "International Affairs."

The speaker will be on "International Affairs."

The speaker will be on "International Affairs."

The speaker will be on "International Affairs."

The speaker will be on "International Affairs."

The speaker will be on "International Affairs."

The speaker will be on "International Affairs."

Ten

Funeral Services For H. H. Patchell To Be Held Friday

Funeral services for Horace Howard Patchell, 46, will be held at 2 p.m. tomorrow in the funeral parlors of H. T. Jones, Newark, where friends may call this evening. Interment will be in Union Cemetery, Cecil County.

An employee of the Chrysler Delaware Tank Plant, Mr. Patchell died Saturday in Elktion Hospital after an illness of three days.

A native of Maryland, Mr. Patchell moved to Newark as a boy and lived here until recent years. He attended Newark High School and the University of Delaware where he studied business administration. He was a member of Kappa Alpha Fraternity.

Surviving are his wife, Mrs. Marian Carson Patchell; a daughter, Mrs. Joanne P. Wetzel, Newark; a son, H. Howard Patchell, Jr., with the U. S. Navy overseas; his mother, Mrs. Elizabeth Patchell, Newark; a sister, Mrs. A. Newman Rose, near Elktion, and two grandchildren.

4-H WINNER

Laura Conner, Landenberg 4-H'er, having won the All-Around Achievement Award for Chester County, is now competing for state honors, the winner to be given an all-expense trip to the National 4-H Convention in Chicago, on Nov. 20.

A Used Car Is Only As Reliable As The Dealer Who Sells It
For over a quarter of a century our watch word has been "Customer Satisfaction."

Rittenhouse Motors
120 Academy Street
Newark, Del.

October is Do-It-Yourself Month!
visit our store and get a **FREE** POPULAR MECHANICS DO-IT-YOURSELF BOOKLET!

NEWARK LUMBER CO.
Phone 504 Newark

Extension Division Plans Management Training Aids

A new undertaking for the University of Delaware Extension Division will begin on Oct. 21, with a series of six lecture-discussion meetings on Management Training at the Tower Hill School in Wilmington. The programs are scheduled for Thursday evening at 7:30 p.m. through the week of December 2.

The university coordinator for the series will be Dr. H. E. Michl, professor of economics, who is a new member of the Delaware faculty.

Professor Erwin H. Schell, head of Business and Engineering Administration, Massachusetts Institute of Technology, will be the first discussion leader. His topic will be "Intangibles in Management."

Sr. Civics Class Plans Campaign For Registrations

Class Members Prepare Speeches Urging People To Register For Nov. 2

The second-period senior civics class taught by Miss Ann Gallaher has begun a campaign entitled "Why Everyone Should Register," in which every class member is making at least one speech on the subject to an organization of persons old enough to vote.

In a standard speech class stresses the fact that no one can vote on Nov. 2 unless he has registered the year or does so on Oct. 16. Then the student reads off a list of the nine polling places in White Clay Creek Hundred and five each in Pencader and Mill Creek Hundreds, parts of which lie in Newark's Special School District.

Maya Zisl, a member of the class, gave the talk before the Parent-Teacher Association and others are addressing civics, fraternal, and even church groups.

A committee of seniors advised by Miss Ann Stauter has chosen the three-act comedy, "Girl Crazy," for the senior play to be staged this fall.

Four seniors reported at an assembly program last week on summer events in which they represented Newark High School.

Pat Seni spoke on Girls' State; Helen Briggs on Boys' State; Robert Gore on Boys' State, and Thomas Kershaw on a workshop at the U. of P. on family finances and service.

Miss Dorothy Markert, guidance teacher, spoke on scholarships.

Perkins Discusses Increased College Enrollment Future

National Recognition Given To Opinions Expressed By President Of University

National recognition has been given to the opinions expressed by Dr. John A. Perkins, president of the University of Delaware, on college enrollment increases.

In a special article for the October issue of "State Government," a monthly periodical published by the Council of State Governments, Dr. Perkins discusses the significance of rapidly increasing birth rates, teacher needs, and the physical requirements facing many institutions.

In his most recent article, "Solving College Enrollment: A Critical Problem for the States," Dr. Perkins declares, "Beginning in 1958 the first-born and most capable of this crop will enter American universities and colleges. They will continue to go on increasing numbers for the next fifteen years."

Of the physical facilities required, Dr. Perkins notes, "If this greater number of young people go on to college at the present rate (approximately 20 out of every hundred), educational facilities will need to be increased in direct proportion. It has been estimated that in the next 15 years as much floor space will have to be provided for higher education as was built in the 300 previous years of collegiate history in the United States."

Especially difficult will be the filling of teacher needs. Dr. Perkins asserts, "Teachers, more important than buildings, especially in higher education, also must be provided. If the present student-teacher ratio is maintained, 115,000 new teachers will be needed between now and 1970. We shall need to double the present college and university faculties in the next 15 years as well as replace half of the present staffs who will retire in the interim."

To meet this perplexing problem, Dr. Perkins cites three conditions of which educators and legislators should be aware.

First, the present danger is that identical, inferior programs may be offered by several institutions in a single state and that others, needed and wanted by students, will be omitted altogether.

Second, states should be aware that in most instances it will cost less to enlarge existing institutions than to create entirely new colleges and universities.

Third, not all states can afford to provide for all graduate and professional studies, such as architecture, medicine, dentistry, veterinary medicine, public health and law.

As a final note of warning of the action necessary, the Delaware president concludes, "Legislators, governors, and educators in every state should immediately begin the comprehensive planning which will be necessary. Buildings cannot be built in a day or teachers trained in a week. The college senior of today will not be a college graduate until 1958. Funds appropriated for a building in 1955 will not produce a structure ready for use until 1958."

"In the autumn of that year the first of the big baby crop will be seeking places in our universities and colleges."

Fire Prevention Measures Offered By Safety Council

Fire-fighting generally is considered a man's job. But when fire breaks out in the home, it's likely to be the housewife who needs to know what to do in a hurry. How urgently she needs this information is shown by the yearly toll of deaths and injuries to women and children from home fires.

If you are celebrating Fire Prevention Week (October 3-9) by arranging first-aid measures against fire in your home, here are suggestions from the Delaware Safety Council which is cooperating with the National Fire Protection Association in this matter.

Most important to know is that different types of fires need different treatments. For example, water will put out ordinary wood, paper or rubbish fires, but may be dangerous in other fires. Water can spread and scatter burning grease or gasoline, and can cause shock if applied to burning electric equipment. Your local fire department can advise on the selection of fire extinguishers for your home but here are some points about their use:

Types of Fires
For Class A fires—that is, burning paper, cloth, wood or household rubbish—wet down to remove heat. A 5-gallon pump tank kept filled with water and in a convenient place is good for quenching such fires. Also recommended is a soda acid extinguisher.

For Class B fires—burning oil, grease, paint or gasoline—the foam extinguishers are excellent quenchers. If grease gets on fire during cooking, it may be smothered by putting a tight lid on the pan or by scattering on baking soda. Baking soda absorbs grease and gives off carbon dioxide to suffocate the fire. Keeping a package by the kitchen range is a safety precaution.

For Class C fires—electrical equipment—smother with some substance that does not conduct electricity. The carbon dioxide extinguishers and the dry chemical extinguishers both are excellent for this type of fire.

With winter just ahead, specialists remind housewives that soda acid and foam extinguishers must be kept where the contents will not freeze.

WESLEYAN FRESHMAN
Joan Marie Christman, of 21 Indian Road, Newark, is one of more than 300 freshman women enrolled at Ohio Wesleyan University for the 1954-55 academic year.

"It's A Great Life"

By The Rev. Milton H. Keene Kingswood-of-Brookside

The trouble with most modern American people is that they figure they'll never be called upon to be great.

Greatness is for men who have their faces engraved on five and ten dollar bills—men for whom magnificent public buildings are named.

People like us—you and I, and the people who live next door—we're not supposed to be great, we figure. Just give us a job; a house to live in; a table to slip our feet under; a pillow to lay our head on; and—well, that's just about it.

Occasionally, however—and you never know when it may happen—

Newark Methodists Plan Family Life Conference Series

Sunday Evening Meetings Planned For Discussions Of Better Family Living

Family Life Conferences, designed to provide counseling and guidance for more effective family living, will be held at the Newark Methodist Church on three Sunday evenings—Oct. 17-24-31. Ten resource persons from Newark and Wilmington agencies, including the university, the public schools, the Newark YMCA, the Family Society and the church will lead discussion groups based upon the general theme, "Family Living," and the sub-topics for each evening.

The program will begin each night at 5:30 with a covered-dish supper for all attending. This will be followed by a general program based upon the themes for each evening as follows: Oct. 17 "What is the Family?"; Oct. 24 "The Family in the Community"; Oct. 31 "Religion in the Family." Discussion groups will then be held and each program conclude with a panel discussion of representatives from the various discussion groups.

Resource persons participating in the program will be: Mrs. Ralph Bender, the Family Society; Dr. Arwin J. Dolig, Prof. Leonard Goodman, Prof. George Henry, Dr. William Penrose and Miss June Patterson—all of the University of Delaware; Mr. O. Q. Ott and Mrs. John Logan of the Newark Public Schools; DeWitt Smith of the Newark YMCA; and the Rev. William P. Kesmodel of Richardson Park Methodist Church.

The intermediate and senior Methodist Youth Fellowships and the Wesley Foundation are participating in the program with separate activities for the children after the supper hour.

Dr. Gorman Lane is chairman of the planning committee and members of the church staff are assisting with plans. The church commission on education is sponsoring the activity and registrations for the series are now being received at the church.

News of Bear
Mrs. Leslie Ford, Correspondent
Phone: New Castle 6484

Mr. and Mrs. Jimmy Lee Kessel of Bear are receiving congratulations on the birth of a son at Delaware Hospital on Tuesday, Oct. 5.

Mrs. Kessel will be remembered as Miss Joan Walker.

Musical selections and talks on the meaning of the grange comprised Monday night's "booster" program of Pencader grange. J. Leslie Ford, past-master, spoke on "What The Grange Means to Me," and Frank Silver, New Castle county deputy for the state grange, discussed the organization's educational contributions.

The national grange master's message was read by Charles Weldin, Pencader master, and readings were given by Mrs. Delbert Gooden and Mrs. Henry Brooks. Instrumental and vocal music was provided by Mr. and Mrs. George Butler, Mr. and Mrs. Henry Brooks, Mr. and Mrs. Charles Weldin, and the male orchestra.

Members plan to attend a luncheon in Capital Grange hall, Dover, Thursday. A card party will be held in the Pencader grange at 8 p.m. every Saturday evening, and on Oct. 20 the sixth degree will be bestowed by the state organization in ceremonies at Dover headquarters.

Mrs. Howard Stanley Jr. and Mr. Alfred Kessler have both been on the sick list.

Mr. and Mrs. Leonard Kelleher of Bear are receiving congratulations on the birth of a daughter on Oct. 7 at St. Francis Hospital.

School Tests
Miss Virginia Wallin visited Eden school on Wednesday and gave the reading readiness test to 24 first graders.

Dr. Gliwa and county school nurses made examinations and gave diphtheria needles to 34 pupils last Thursday.

Mrs. May B. Leasure, Delaware state chairman of the rural department, National Educational Association, attended the meeting in Washington on Sunday.

REWARD

for return . . . or information leading to return of large black cat, male, wearing green collar, lost in vicinity of Brookside, missing since September 19.

Answers to name "Pancho" or "Tecky". Children's pet. Call Newark 7594 after 7 p.m. or address 120 Kenmar Drive.

STATE OF DELAWARE
Office of Secretary of State
CERTIFICATE OF DISSOLUTION
To All Whom These Presents May Come, Greetings:

WHEREAS, it appears to my satisfaction by a duly authenticated certificate of the Delaware corporation known as DONALD BRUSH COMPANY, INC., a Delaware corporation whose principal office is located at No. 200 Market Street in the City of Wilmington has been authorized in accordance with the provisions of the Delaware General Corporation Law of Delaware, Chapter 1, Title 8, Delaware Code, as amended, which certificate is now on file in my office as provided by law.

IN TESTIMONY WHEREOF, I have hereunto set my hand and official seal at Dover, this sixth day of October, 1954.

(OFFICIAL SEAL)
JOHN N. McDOWELL,
Secretary of State
M. R. Kestel,
Asst. Secretary of State

CERTIFICATE OF REDUCTION OF CAPITAL
ARAGON REALTY CORPORATION, a corporation organized and existing under the General Corporation Law of the State of Delaware, DOES HEREBY CERTIFY as follows:

(1) That by resolution of its board of directors, supplemented by a resolution adopted by the holders of record of a majority of the outstanding shares of the corporation having voting power at a meeting of the stockholders called for that purpose, among others, upon at least ten days notice given to the stockholders in accordance with the bylaws of the corporation, the capital of said corporation was reduced by the amount of One Hundred Sixteen Dollars (\$116.00) said reduction to be effected by retiring 116 common shares of the corporation of the par value of One Dollar (\$1.00) each owned by the corporation and held by it as treasury stock.

(2) That the assets of the corporation remaining after such reduction are sufficient to pay any debts, the payment of which has not been otherwise provided for.

IN WITNESS WHEREOF, said ARAGON REALTY CORPORATION has caused its corporate seal to be affixed to this certificate, signed by NORMAN FREELING, its President, and H. W. SCHLOSS, its Secretary, this 10th day of October, 1954.

ARAGON REALTY CORPORATION
By: NORMAN FREELING, President
H. W. SCHLOSS, Secretary

ARAGON REALTY CORPORATION
1951 CORPORATE SEAL
DELAWARE
STATE OF ILLINOIS

COUNTY OF COOK
BE IT REMEMBERED that on this 23rd day of September, A.D. 1954, personally came before me, Virgil Di Pietro, a Notary Public in and for the County and State aforesaid, the above and foregoing is a true and correct copy of Certificate of Reduction of Capital of the "ARAGON REALTY CORPORATION," as received and filed in this office the twenty-seventh day of September, A.D. 1954, at 11 o'clock A.M.

IN TESTIMONY WHEREOF, I have hereunto set my hand and seal of office the day and date aforesaid.

(SEAL)
VIRGIL DI PIETRO,
NOTARY PUBLIC
COOK COUNTY, ILL.

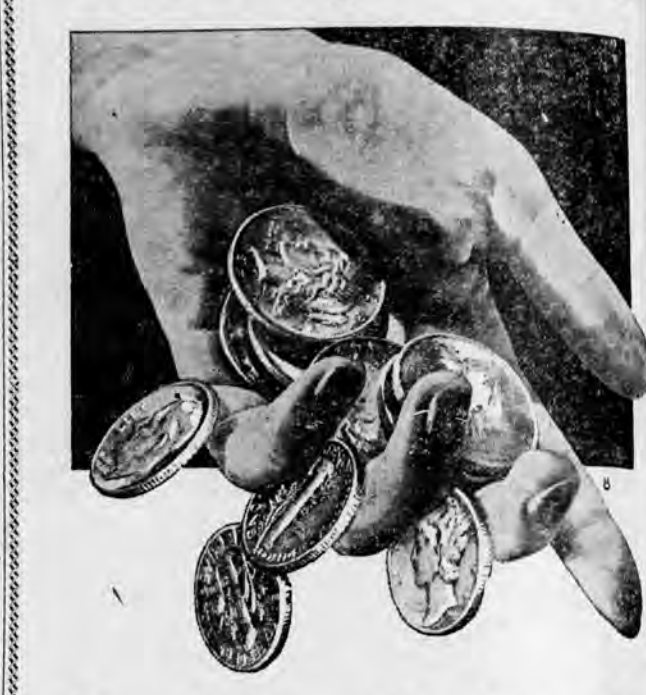
STATE OF DELAWARE
OFFICE OF SECRETARY OF STATE
JOHN N. McDOWELL, Secretary of State of the State of Delaware, DO HEREBY CERTIFY that the above and foregoing is a true and correct copy of Certificate of Reduction of Capital of the "ARAGON REALTY CORPORATION," as received and filed in this office the twenty-seventh day of September, A.D. 1954, at 11 o'clock A.M.

IN TESTIMONY WHEREOF, I have hereunto set my hand and seal of office the day and date aforesaid.

(SEAL)
JOHN N. McDOWELL,
Secretary of State
M. R. Kestel,
Asst. Secretary of State

Received for Record
September 27, 1954
Duties of Notary
Sept. 30, Oct. 7, 14

Don't Let Cash Slip Thru Your Fingers . . . Play it SAFE . . . PAY by CHECK



Newark Trust Co. Offers You

A Real Public Service

NO Minimum Balance
NO Service Charge

ON CHECKING ACCOUNT

PAY by CHECK

It's so easy, to depend on a convenient, safe checking account for making all payments. Cancelled checks become reliable proof of payment and records which make budget-keeping simpler to maintain.

Moreover, there is no longer need to carry large amounts of money for shopping. And there's no opportunity for loss through theft. Why don't you play safe, too? Open your checking account today. Use our No Service Charge protection!

Open A NO SERVICE CHARGE Checking Account Today!

At your friendly, LOCAL banking institution where you will be cheerfully greeted and speedily served by your neighbors and fellow citizens. . . And, where your deposits are insured up to \$10,000 under the Federal Deposit Insurance Corporation—your guarantee of safety.

DO ALL YOUR BANKING at your friendly Home-Owned and Home-Operated

NEWARK TRUST COMPANY
Newark, Delaware
MEMBER-FEDERAL-DEPOSIT-INSURANCE-CORPORATION

"Big Enough to Serve You—Small Enough to Know You"

Fri. 8 A. M. to 9 P. M. — Closed Sat.

Brookside Teachers Plan PTA Program For Parents

The seven teachers at the Brookside elementary school will participate in a special program at the Brookside PTA meeting on Wednesday, Oct. 20, at 8 p.m., with the theme "What is a School Day?"

The teachers will portray for the parents, the routine of a day's work in the classroom, and Principal John Auletto and Mrs. Nichols, school nurse, will speak before the group following a brief business meeting.

Nominations for vice-president and treasurer of the PTA, to fill vacancies occasioned by the resignations of Mrs. Maguire and Miss Joan McCain, will be accepted at the meeting.

Charles Koller, of the Brookside PTA, has been elected secretary-treasurer of the Newark Council of PTAs, and the Brookside group reports a local membership of 240 persons.

U. of D. Abandons Band's Pageantry For Better Music

Director King Announces Shift From Novelty Acts To Music, Military Drill

A change from the college trend toward band pageantry will be noted by Blue Hen spectators at the University of Delaware marching band moves on the field for Delaware football games this fall.

J. Robert King, director of the University of Delaware marching band, has announced that this year's performance will feature smart, military-style precision drill, replacing the rocking chairs, roller coasters, rowboats, and comparable music pageantry of the last several years.

The impossibility of continued originality plus the lower calibre of music necessitated by pageantry are the principle weaknesses in the pageantry system pinpointed by Mr. King.

Bands, entering the college football scene approximately 25 years ago, first played only in the stands; later the musical groups became the marching teams, often forming the prelude to the game.

Dr. Ewan Clague, commissioner of labor statistics and a special assistant to the secretary of labor, has accepted an invitation to address the opening session at 2 p.m.

Waning effectiveness of the pageant, resulting from repetitious formations and continued usage of light tunes—"Polly, Put the Kettle On," "Little Brown Jug," and others—has caused Director King to adopt the thesis that "A band is a musical organization first and a marching organization second."

"A return to precision drill and the wonderful marching music of Sousa, Goldman, Fillmore, etc.," states Mr. King, "brings a fine sense of balance between sound and sight."

The new West Point style band uniforms and the construction of the Delaware stands are also much better adapted to precision drill.

Effective viewing of pageantry should be done from a relatively high elevation for proper understanding, while precision drill is just as effective when viewed from any angle.

The present marching band is entering its ninth year of existence. It was first founded when J. Robert King came to the University of Delaware in 1946 as the first full-time band director.

On good hard surface road, Newark school bus. Shown by appointment only. The bargain price is only \$20,000.00.

DAIRY FARM & NICE HOME
2 Miles to Newark

56 acres, very productive land, stream, and some woods. 7 rooms and bath dwelling, in setting of old shade and shrubbery. Fine 12-stall dairy barn, silo, and plenty out-buildings, all in fine condition. Land station sites in this area.

One of the best of the best, that could be sold for good. **SOLD** approx. 1000 feet frontage, fronting to the two first.

This property has many possibilities and is fine buy for some one. Owner leaving, and is willing to sell for \$21,500.00 which in our opinion is a bargain price. Quick possession.

CHESTNUT HILL - ROLLING GREEN
New Ranch Type Home

Living room with brick fire place, picture window, D.R. Modernistic kitchen that the women love, three beautiful bedrooms with slide door closets, tile bath, oak floors, FABULOUS finished, attached garage, shingle siding, oil heat, city water, full size high cemented basement, large lot nicely landscaped. Fine buy at \$17,900.

This fine home, exceptionally well built, with the best material, and workmanship.

LARGE FAMILY HOME
Only 3 blocks off E. Main St.

6 bedrooms, & bath. L.R.-D.R. very large kitchen, laundry room. Full size basement, new GE oil hot water furnace, full length storm doors and screens, 2-car garage, lifetime asbestos roof, all in excellent condition inside and out. Corner lot 50x150 ft.

Why worry about a big roomy home to live in when you can buy this bargain with only \$20,000 down.

If you don't need so many bedrooms you can easily rent them, and cut down the high cost of living. Possession at settlement.

ACADEMY STREET
OPPOSITE HIGH SCHOOL ENTRANCE

One of the nicest locations in the city. Beautifully landscaped grounds, lot 60x180 ft. Plenty of old shade and well-kept shrubbery and flowers. Masonry-stuccoed white dwelling. 1st floor large L.R.-D.R. den or music room, modern kitchen, beautiful new powder room, large front porch, 2nd floor—three corner brick bedrooms, attractive bath. Plenty of closets.

Spice and span full size cemented basement, with laundry, copper plumbing, nearly new gas circulating, warm air furnace. House completely redecorated, inside and out, refinished floors, nothing to do but move in.

A money saving location right in the heart of our city. Quick possession. All for only \$17,000.00.

Statewide Meeting On Care of Aged Scheduled at U.D.

Social, Economic, Health Problems of State's Aged To Be Discussed Nov. 11

A statewide conference on the increasing number of aged persons in Delaware will be held Thursday, Nov. 11 at the University of Delaware.

G. Warfield Hobbs III, of New York City, chairman of the National Committee on Aging, will be among the principal speakers at the afternoon and evening sessions arranged by the Welfare Council of Delaware's committee on this problem and by the university's extension services division.

Miss B. Ethelda Mullen, chairman of the council committee, is serving with Charles W. Bush, special conference committee chairman and a number of other citizens. Gov. J. Caleb Boggs is honorary chairman.

The social, economic, and health problems of senior citizens in the state will be discussed in workshop meetings.

Dr. Ewan Clague, commissioner of labor statistics and a special assistant to the secretary of labor, has accepted an invitation to address the opening session at 2 p.m.

The "Blue Hens" Did It Again

They have a fine team and we are proud of them. A fine clean-playing football team is a big asset to any university.

CAPITOL TRAIL

NEW brick ranch home, a beauty in a grand location, high elevation overlooking the surrounding country. 3 1/2 Acres, 140 ft. frontage, 1150 ft. deep, with stream and beautiful park. Dwelling sets back 200 ft. from highway. L.R. 14x24 with brick fire place, and large picture window. D.R. 12x12 with picture window, modern dream kitchen 12x18, 2 B.R. 12x13 tile bath, beautiful oak floors, cemented basement with inside and outside entrance, 26x50, high and dry, ideal for play room and club room. Oil heat. This home is built of the best materials and workmanship.

A property with almost unlimited possibilities, room for five additional dwelling if desired.

Can only be appreciated by inspection, which is by appointment only. If you want space this is it.

Only 4 blocks to NEW MEDILL SCHOOL, Wilmington-Newark bus at door. This is an exceptional buy at \$25,500.00.

ELKTON ROAD BY COLLEGE PARK
Masonry Construction, 1st floor, modern kitchen, D.R.-L.R., den, 2nd floor, very large master bedroom, and two other nice corner bedrooms, and bath, attached garage, oil heat, all H.W. Floors, cemented basement. Corner lot 60x120 ft., this is a very valuable location and is well priced at \$19,000.00.

Shown by appointment only. Quick Possession.

Valuable lots on Winslow and Beverly Roads. \$4,000.00 & \$5,000.00.

U.S. ROUTE 40
at Crow's Nest

Bungalow, 5-rooms, bath, full size basement, cemented. Nice front porch, garage, poultry house. Plenty of shade and shrubbery. Lot approx. 1/2 acre, excellent garden ground. A fine buy at \$9,000.00. Can be financed.

BUILDING SITE FOR GOOD HOMES
14 Acres, high elevation, with a grand view overlooking the beautiful Glasgow Valley and is very fertile soil, and has many nice trees.

7 Rooms and bath, dwelling in setting of grand old shade trees and shrubbery, with beautifully landscaped lawn. In excellent condition inside and out, and a fine place to live.

1 Acre and the dwelling should readily sell for \$15,000.00—this would leave 13 acres on which to build, and this is the kind of location that many people are hunting for.

If you want to make some real money, it will pay you to inspect this bargain offer, we know of nothing in this area that presents a better opportunity.

On good hard surface road, Newark school bus. Shown by appointment only. The bargain price is only \$20,000.00.

DAIRY FARM & NICE HOME
2 Miles to Newark

56 acres, very productive land, stream, and some woods. 7 rooms and bath dwelling, in setting of old shade and shrubbery. Fine 12-stall dairy barn, silo, and plenty out-buildings, all in fine condition. Land station sites in this area.

One of the best of the best, that could be sold for good. **SOLD** approx. 1000 feet frontage, fronting to the two first.

This property has many possibilities and is fine buy for some one. Owner leaving, and is willing to sell for \$21,500.00 which in our opinion is a bargain price. Quick possession.

CHESTNUT HILL - ROLLING GREEN
New Ranch Type Home

Living room with brick fire place, picture window, D.R. Modernistic kitchen that the women love, three beautiful bedrooms with slide door closets, tile bath, oak floors, FABULOUS finished, attached garage, shingle siding, oil heat, city water, full size high cemented basement, large lot nicely landscaped. Fine buy at \$17,900.

This fine home, exceptionally well built, with the best material, and workmanship.

LARGE FAMILY HOME
Only 3 blocks off E. Main St.

6 bedrooms, & bath. L.R.-D.R. very large kitchen, laundry room. Full size basement, new GE oil hot water furnace, full length storm doors and screens, 2-car garage, lifetime asbestos roof, all in excellent condition inside and out. Corner lot 50x150 ft.

Why worry about a big roomy home to live in when you can buy this bargain with only \$20,000 down.

If you don't need so many bedrooms you can easily rent them, and cut down the high cost of living. Possession at settlement.

ACADEMY STREET
OPPOSITE HIGH SCHOOL ENTRANCE

Registrations For Bridge Course Open At Y Office

Registrations are still being accepted for the eight-week adult bridge courses starting next Tuesday and Thursday, Oct. 19-21, at 7:30 p.m., at the YMCA headquarters, 66 East Main Street. Mrs. Jane Colburn will be the instructor and registrations may be made by calling the Y office, 6701.

There are a few more openings for the junior high dancing class beginning Oct. 20, from 7 to 8 p.m., at the Main Street school. Registrations should be in on or by Oct. 15.

The first adult square dance will be held at the Medill elementary school on Friday, Oct. 15, from 8 to 11 p.m. Everyone is welcome to attend.

Shakespeare To Be Theme Of Dramatic Conference

"Shakespeare on our Stages" will be the theme of the 15th Delaware Dramatic Conference at the University of Delaware which has been scheduled for Oct. 29, 9 a.m. to 3 p.m.

The all-day meeting is jointly sponsored by the University Dramatic Center and the Delaware Dramatic Association. Plans for the program are now being formulated by Dr. C. Robert Kase, director of the Dramatic Center, and William P. Frank, president of the Delaware Dramatic Association.

Dr. Ewan Clague, commissioner of labor statistics and a special assistant to the secretary of labor, has accepted an invitation to address the opening session at 2 p.m.

On good hard surface road, Newark school bus. Shown by appointment only. The bargain price is only \$20,000.00.

DAIRY FARM & NICE HOME
2 Miles to Newark

56 acres, very productive land, stream, and some woods. 7 rooms and bath dwelling, in setting of old shade and shrubbery. Fine 12-stall dairy barn, silo, and plenty out-buildings, all in fine condition. Land station sites in this area.

One of the best of the best, that could be sold for good. **SOLD** approx. 1000 feet frontage, fronting to the two first.

This property has many possibilities and is fine buy for some one. Owner leaving, and is willing to sell for \$21,500.00 which in our opinion is a bargain price. Quick possession.

CHESTNUT HILL - ROLLING GREEN
New Ranch Type Home

Living room with brick fire place, picture window, D.R. Modernistic kitchen that the women love, three beautiful bedrooms with slide door closets, tile bath, oak floors, FABULOUS finished, attached garage, shingle siding, oil heat, city water, full size high cemented basement, large lot nicely landscaped. Fine buy at \$17,900.

This fine home, exceptionally well built, with the best material, and workmanship.

LARGE FAMILY HOME
Only 3 blocks off E. Main St.

6 bedrooms, & bath. L.R.-D.R. very large kitchen, laundry room. Full size basement, new GE oil hot water furnace, full length storm doors and screens, 2-car garage, lifetime asbestos roof, all in excellent condition inside and out. Corner lot 50x150 ft.

Why worry about a big roomy home to live in when you can buy this bargain with only \$20,000 down.

If you don't need so many bedrooms you can easily rent them, and cut down the high cost of living. Possession at settlement.

ACADEMY STREET
OPPOSITE HIGH SCHOOL ENTRANCE

One of the nicest locations in the city. Beautifully landscaped grounds, lot 60x180 ft. Plenty of old shade and well-kept shrubbery and flowers. Masonry-stuccoed white dwelling. 1st floor large L.R.-D.R. den or music room, modern kitchen, beautiful new powder room, large front porch, 2nd floor—three corner brick bedrooms, attractive bath. Plenty of closets.

Spice and span full size cemented basement, with laundry, copper plumbing, nearly new gas circulating, warm air furnace. House completely redecorated, inside and out, refinished floors, nothing to do but move in.

A money saving location right in the heart of our city. Quick possession. All for only \$17,000.00.

NEW COUNTRY HOME
Stone, L.R. Knotty Pine panelling, D.R. Modern kitchen with electric dish washer, 3 beautiful bedrooms, tile bath, expansion attic with stairway, for two additional rooms if desired. Two-car garage under house, amiesite drive. Lot 100x200 ft. 2 1/2 miles to Louvers Building. Good hard surface road. Open country and one of the better areas around Newark. Newark School bus. Possession at settlement. A fine buy for less than \$28,000.00.

NEW BRICK RANCH HOME
L.R. with brick fire place, dream kitchen, D.R. 3 bedrooms, tile bath, oak floors, FABULOUS Finished; Full size, high, dry, cemented basement with laundry; copper plumbing, oil hot water heat, baseboard radiators. Insulated. Lot 85x230 ft. Newark school bus. Ready for occupancy. Only \$14,500.

NEW BRICK RANCH HOME
L.R. with brick fire place, dream kitchen, D.R. 3 bedrooms, tile bath, oak floors, FABULOUS Finished; Full size, high, dry, cemented basement with laundry; copper plumbing, oil hot water heat, baseboard radiators. Insulated. Lot 85x230 ft. Newark school bus. Ready for occupancy. Only \$14,500.

NEW BRICK RANCH HOME
L.R. with brick fire place, dream kitchen, D.R. 3 bedrooms, tile bath, oak floors, FABULOUS Finished; Full size, high, dry, cemented basement with laundry; copper plumbing, oil hot water heat, baseboard radiators. Insulated. Lot 85x230 ft. Newark school bus. Ready for occupancy. Only \$14,500.

NEW BRICK RANCH HOME
L.R. with brick fire place, dream kitchen, D.R. 3 bedrooms, tile bath, oak floors, FABULOUS Finished; Full size, high, dry, cemented basement with laundry; copper plumbing, oil hot water heat, baseboard radiators. Insulated. Lot 85x230 ft. Newark school bus. Ready for occupancy. Only \$14,500.

NEW BRICK RANCH HOME
L.R. with brick fire place, dream kitchen, D.R. 3 bedrooms, tile bath, oak floors, FABULOUS Finished; Full size, high, dry, cemented basement with laundry; copper plumbing, oil hot water heat, baseboard radiators. Insulated. Lot 85x230 ft. Newark school bus. Ready for occupancy. Only \$14,500.

NEW BRICK RANCH HOME
L.R. with brick fire place, dream kitchen, D.R. 3 bedrooms, tile bath, oak floors, FABULOUS Finished; Full size, high, dry, cemented basement with laundry; copper plumbing, oil hot water heat, baseboard radiators. Insulated. Lot 85x230 ft. Newark school bus. Ready for occupancy. Only \$14,500.

NEW BRICK RANCH HOME
L.R. with brick fire place, dream kitchen, D.R. 3 bedrooms, tile bath, oak floors, FABULOUS Finished; Full size, high, dry, cemented basement with laundry; copper plumbing, oil hot water heat, baseboard radiators. Insulated. Lot 85x230 ft. Newark school bus. Ready for occupancy. Only \$14,500.

NEW BRICK RANCH HOME
L.R. with brick fire place, dream kitchen, D.R. 3 bedrooms, tile bath, oak floors, FABULOUS Finished; Full size, high, dry, cemented basement with laundry; copper plumbing, oil hot water heat, baseboard radiators. Insulated. Lot 85x230 ft. Newark school bus. Ready for occupancy. Only \$14,500.

NEW BRICK RANCH HOME
L.R. with brick fire place, dream kitchen, D.R. 3 bedrooms, tile bath, oak floors, FABULOUS Finished; Full size, high, dry, cemented basement with laundry; copper plumbing, oil hot water heat, baseboard radiators. Insulated. Lot 85x230 ft. Newark school bus. Ready for occupancy. Only \$14,500.

NEW BRICK RANCH HOME
L.R. with brick fire place, dream kitchen, D.R. 3 bedrooms, tile bath, oak floors, FABULOUS Finished; Full size, high, dry, cemented basement with laundry; copper plumbing, oil hot water heat, baseboard radiators. Insulated. Lot 85x230 ft. Newark school bus. Ready for occupancy. Only \$14,500.

NEW BRICK RANCH HOME
L.R. with brick fire place, dream kitchen, D.R. 3 bedrooms, tile bath, oak floors, FABULOUS Finished; Full size, high, dry, cemented basement with laundry; copper plumbing, oil hot water heat, baseboard radiators. Insulated. Lot 85x230 ft. Newark school bus. Ready for occupancy. Only \$14,500.

NEW BRICK RANCH HOME
L.R. with brick fire place, dream kitchen, D.R. 3 bedrooms, tile bath, oak floors, FABULOUS Finished; Full size, high, dry, cemented basement with laundry; copper plumbing, oil hot water heat, baseboard radiators. Insulated. Lot 85x230 ft. Newark school bus. Ready for occupancy. Only \$14,500.

NEW BRICK RANCH HOME
L.R. with brick fire place, dream kitchen, D.R. 3 bedrooms, tile bath, oak floors, FABULOUS Finished; Full size, high, dry, cemented basement with laundry; copper plumbing, oil hot water heat, baseboard radiators. Insulated. Lot 85x230 ft. Newark school bus. Ready for occupancy. Only \$14,500.

NEW BRICK RANCH HOME
L.R. with brick fire place, dream kitchen, D.R. 3 bedrooms, tile bath, oak floors, FABULOUS Finished; Full size, high, dry, cemented basement with laundry; copper plumbing, oil hot water heat, baseboard radiators. Insulated. Lot 85x230 ft. Newark school bus. Ready for occupancy. Only \$14,500.

"Hands Off" Urged At Harvest Time For Corn Pickers

County Agent Cautions Farmers On Mechanical Corn-Picking Hazards

"Mechanical corn picking has ended the back-breaking and time consuming farm job of hand harvesting, but the skill of the mechanical picker often can be nullified by careless operation," points out Edward Schabinger, county agent.

This year's corn harvest will bring another heavy toll of fatalities and mangled fingers, hands, arms, and legs unless safer practices are adopted. Mr. Schabinger warned the corn picker will take them off if you don't keep your hands off the machine in operation.

Here are three rules from the National Safety Council that will check these unnecessary mishaps:

1. Stop the picker—the corn picker has hazardous mechanisms exposed to do the job for which it is designed. There seems to be no practical method of guarding picker rolls. Turn off the power before clearing them.

2. Keep guards in place. Manufacturers furnish convenient shields for power take-offs and other exposed hazards that can be guarded. All you have to do is keep them in place.

3. Watch out for fire—practice good housekeeping around your equipment. Keep mainfields and exhausts free from trash accumulations, avoid leaky fuel lines, and never refuel a tractor with the motor running.

SHERIFF'S SALE—By virtue of a writ of Abs. Vend. Exp. Motion, No. 1 November Term A.D. 1954 to be directed will be exposed to Public Sale at the Court House, Southeast Corner of Eleventh and King Streets, City of Wilmington, New Castle County, Delaware.

ON FRIDAY THE TWENTY-NINTH DAY OF OCTOBER A.D. 1954 at 10 o'clock A.M. Eastern Standard Time, the following described Real Estate viz:

All that certain lot or piece of land situate in Christians Hundred, New Castle County and State of Delaware being lot No. 12, Block A, as numbered and laid off on the plat of 2-24-01 and more particularly bounded and described as follows: to-wit:

BEGINNING at a point in the easterly side of Walnut Avenue, a distance of one hundred and seventy feet northerly from the northerly side of the New Road, thence in a northerly direction and along the easterly side of Walnut Avenue, twenty five feet to a point, thence in an easterly direction and parallel to the New Road, one hundred and fifty feet to a point, thence in a westerly direction and parallel to the New Road, one hundred and fifty feet to the easterly side of Walnut Avenue and place of BEGINNING.

The property of Henry Black and to be sold by ELMER C. TAYLOR, Sheriff, Sheriff's Office, Wilmington, Del., October 13, 1954. TERMS CASH Oct. 14, 21, 28

Store & dwelling, brick, 6 rooms and bath, on corner; Store doing a fine business which could be greatly increased. Plenty of room to make store room good size. You can have a good place to live and make good money in your store.

This is a bargain at \$10,000.00. Quick possession.

EAST DELAWARE AVENUE
Large home in center of City joining school play ground, 8 rooms, two bath, for a large family home, or three small apartments. Just being completely remodeled and reconditioned cellar to attic. Large lot, with old shade trees, 2-car garage, new amiesite drive, storm sash and screens, oil heat.

A good place to live or will make a very fine investment. You can rent anything in this area. Only \$15,500.00.

BEAUTIFUL COUNTRY HOME
Paper Mill Road—Just Outside City Limits

Brick with stone front, large play room basement, hobby room, fruit cellar, high and dry. Oil hot water heat.

1st floor, 3 beautiful good size bedrooms, D.R. L.R. with artistic brick fire place, tile bath, with tub and modern glass door shower. H.W. Floors. Dream kitchen, up-to-date, side porch, roofed, 2nd floor, large expansion attic, with water, heat, connection installed. Floored, would make three large rooms and bath. This is an exceptionally fine home, built of best material, and fine workmanship, on a beautifully landscaped lot, 80x140 ft. with a grand view.

Newark School bus. Shown by appointment only. If you want a fine home in a grand location this is it.

NOTTINGHAM MANOR LOTS
They are moving fast, only 6 left, if you want to buy a lot in one of Newark's best residential areas, don't delay.

NEW APARTMENT HOUSE
Masonry stuccoed, 4 rooms and bath each floor, all hard wood floors, oil hot water heat, beautiful high dry cemented basement on good size lot, only two blocks from High School. Rentals are scarce and high, and this would make a fine investment.

Only \$18,000.

LARGE BRICK HOME
8 Bed rooms, L.R., with brick fire place, D.R. Nice kitchen, basement, large front porch, high elevation and grand view. Lot 110x400 ft. Plenty of old shade and shrubbery. In city.

COUNTRY HOME
Old Baltimore Pike

On beautifully landscaped 3 acres. L.R. two large bedrooms, bath, modern kitchen, utility room, garage and unique steam bath, first floor, 2nd floor, two bedrooms, drop stairway. Aluminum storm doors and storm windows. Artistic rustic outside fireplace. Newark school bus at door. A fine buy at \$15,000.00.

DELAFLANE MANOR
Beautiful 4 bedroom home, Large L.R. with open stairway, large D.R. with bay window, large modern kitchen. Full size high, dry, play room basement, new oil burner. Corner lot 125x194 ft. large hedge fence, and beautifully landscaped, circle drive.

One, two blocks to Bus line, close Medill School. Quick possession, and real buy at \$19,500.00.

COUNTRY HOME
Beautiful location on Paper Mill Road, in setting of grand old shade trees, pines, four large apple trees; 8 rooms, full basement, corner two highways. Approx. 1 acre, stream. All floors refinished and redecorated throughout. If you want to live in the country in a beautiful area you should investigate this property. Newark School bus.

NORFOLK MANOR BUILDING LOTS
Are moving fast, with a few left, and they are all choice. NEWARK'S most desirable and fascinating dwelling area. Scenic beauty and high altitude make them most attractive. Some wooded lots on the Welch Tract Road, are very attractive, all fairly priced and restricted.

STONE COUNTRY HOME
Polly Drummond Hill. View unsurpassed in the county — with 3 acres of beautiful lawn, trees and shrubbery, make it the IDEAL SPOT. 4 bedrooms, bath, very large living room, D.R. approx. 20 ft. square, large kitchen, two-car garage. Newark school bus. Just \$23,500.00.

BRICK CAPE COD
Large L.R. with brick fire place, Spacious D.R., one bedroom, modern kitchen, tile bath, first floor, two good size bedrooms second floor, full size, high dry cemented basement, new oil hot water furnace, H.W. Floors, aluminum comb. storm sash and screens, insulated. Garage, lot 100x200 ft., beautifully landscaped with plenty fine shrubbery, and fine new fence.

Only three blocks to High School, excellent buy at \$18,000.00. No redecoration or repairs necessary.

STONE RANCH HOUSE
New, 92-ft. long, with garage and breezeway, pond, 3-bedrooms, L.R., D.R., Den, Kitchen and Bath, Oil heat. Sun deck. Beautifully landscaped lawn, only 4 miles to Newark and Louvers Building.

Shown by appointment only. Nice buy at \$16,000.00.

THIS IS ONE OF BETTER BUYS
SOUTH COLLEGE AVE.

New brick. Large living room with brick fireplace, dining room, very large modern kitchen. 2nd flr. 3 beautiful bedrooms (master bedroom large), attractive bath. Full size cemented basement, high and dry with laundry. All hardwood floors. Aluminum storm sash and screens. Oil heat. Garage with amiesite drive. Lot 50x200 ft. Quick possession. A fine buy at \$19,500.

Corner Main & Haines Streets.

YOUR A&P SUPER MARKET IS OPEN THURSDAY & FRIDAY NIGHTS

Come See, Come Save
A&P 95th Anniversary
1859 Anniversary 1954

2ND BIG WEEK

When you go shopping this weekend take this ad along with you and compare prices.

All prices in this advertisement guaranteed thru Sat. Oct. 16

Cashmere Bouquet Soap
3 regular size cakes 25¢

Cashmere Bouquet Soap
2 bath size cakes 25¢