

*THE
FACULTY*



GEORGE A. HARTER, M. A., Ph. D.
President, and Professor of Mathematics and Physics

Dr. Harter was born near Leitersburg, Washington County, Md., November 7, 1853. After attending local schools he entered the National Normal School, Lebanon, Ohio, in 1871. He taught in local schools until 1874, when he entered St. John's College at Annapolis, Md., graduating in 1878 with the degree of B. A. He then took a graduate course in English and Mathematics and received the degree of M. A. After his graduation he was appointed Assistant Professor in Mathematics and Latin at St. John's College, and two years later he took charge of the Leitersburg Grammar School. In 1881 he became Principal of the Hagerstown Academy. He resigned that position in 1885, when he was elected Professor of Mathematics and Physics in Delaware College. In 1892 he received the degree of Ph. D. from St. John's College. In 1896 he was elected President of Delaware College.

THEODORE R. WOLF, M. A., Ph. D.

*Professor of Chemistry, Mineralogy, Geology and
Sanitary Science*

Dr. Wolf was born at Edwardsville, Ill., on September 17, 1850. He graduated from Washington University, St. Louis, Mo., in 1868, receiving the degree of B. S. In 1870 he received the degrees M. A. and Ph. D. from the University of Heidelberg. He is now Professor of Chemistry, Mineralogy, Geology and Sanitary Science in Delaware College and State Chemist of Delaware. Dr. Wolf is a member of the German Chemical Society, Franklin Institute of Philadelphia and the Phi Kappa Phi Fraternity.



FREDERIC H. ROBINSON, C. E.

Professor of Civil Engineering



Professor Robinson was born at Wilmington, Del., August 28, 1850. His early education was received at home under the direction of his mother, in the Wilmington Public Schools, and later at the William A. Reynold's Classical and Mathematical Institute, Wilmington, Del. After graduating, he taught mathematics and English in the latter Institute, and earned the money with which he paid his way through college. In 1875 he graduated from Polytechnic College of the State of Pennsylvania, with the degree of B. C. E., winning the prize for the best graduating thesis. In 1883 he received from the same college the degree of M. C. E. Since his graduation he has occupied the following positions:—Assistant Engineer Pittsburg Division, Pennsylvania Railroad; Assistant Professor and Professor of Mathematics, Polytechnic College; Draftsman, Edgemoor Bridge Works, Edgemoor, Del.; Assistant Engineer and Chief Engineer, Department of Engineering and Surveying, Wilmington, Del.; Instructor the Wilmington Drafting School; member of the firm of Canby & Robinson, Civil Engineers and Surveyors, Wilmington, Del.; Assistant Engineer

Corps Maryland Div. P., B. & W. R. R.; since 1901 Professor of Civil Engineering, Delaware College, and, since 1896, Secretary of the Faculty. He has written some literary verse, literary and scientific essays, and a portion of a text-book on surveying. He is a member of the Religious Society of Friends; Young Men's Republican Club, of Wilmington; (honorary) Alumni of Friends School, Wilmington, and of Delaware College; Phi Kappa Phi Fraternity; and the Society for the Promotion of Engineering Education.

ELISHA CONOVER, M. A.

Professor of Latin and Greek

Professor Conover was born at Harrisonville, N. J., on August 14, 1860. After being prepared at Penington Seminary, N. J., he entered Dickinson College, where he graduated in 1884, receiving the degree of B. A. In 1887 he received the M. A. degree from the same college, and in '87-'88 he took up graduate work at Johns Hopkins University. Professor Conover is a member of the Kappa Phi and Phi Kappa Phi Fraternities and the American Philological Association.



EDGAR DAWSON, M. A., Ph. D.

Professor of English, History and Philosophy

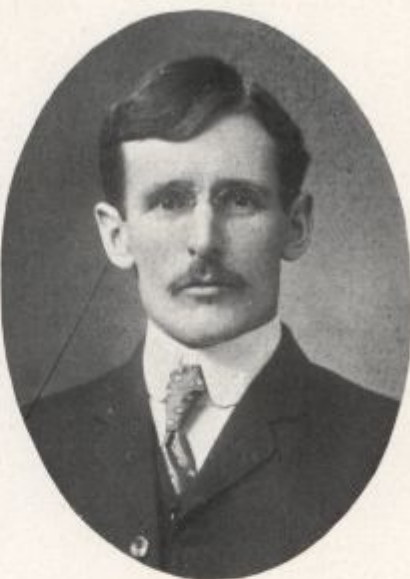


Dr. Dawson was born December 22, 1872, at Scottsville, Virginia. He was prepared for college in the High School of his native town and at New Providence Academy. After a one-year course in the Indianapolis Business University, he entered Davidson College, N. C., whence he was graduated in 1895, with the degree B. A. During the next two years he held the Mason Fellowship in History at the University of Virginia, and in 1897 was admitted to the M. A. degree of that institution. After spending two years as Principal of New Providence Academy in Virginia, he went to Germany to study English Philology, History and Philosophy. In 1902 he received the Ph. D. degree at Leipsic University and has since been Professor in Delaware College. He is a member of the Phi Kappa Phi Fraternity, the American Dialect Society, the Historical Association of the Middle States, the Modern Language Association of America; the American Historical Association and the National Educational Association, and is author of "Shakespeare's Songs," "Byron and Moore," etc.

JAMES F. FOORD, B. S., M. S. A.

Professor of Agriculture

Professor Foord received the degree of B. S. from the New Hampshire College of Agriculture and Mechanic Arts in 1898, and in 1902 he received the M. S. A. degree from Cornell University. From 1900 to 1903 he was Assistant in College of Agriculture and Agricultural Experiment Station, Cornell University. He was Professor of Agriculture at Delaware College from 1903 to April 1, 1906, when he was appointed Associate Professor of Agronomy at Ohio State University. He is a member of the Sigma Xi, Kappa Sigma, Phi Kappa Phi, and honorary member of the Athenaeon Society.



EDWARD LAURENCE SMITH, M. A.

Professor of the Modern Languages



Professor E. L. Smith was born at Newark, Del., March 19, 1877. In 1892 he entered Delaware College, graduated in 1896 with the degree of B. A., and during 1896-'98 was a graduate student in Latin, German, French, Italian and Spanish, at that college. He was University Scholar in Romance Philology, and student of the Romance Languages and Literatures, and the Germanic Languages and Literature at Columbia University, 1898-'99. The degree of M. A. was conferred upon him by Delaware College in 1899. In 1899-1900 he was University Fellow in Romance Philology and student of the above mentioned subjects at Columbia University. He was a student of Romance Philology and Literatures at L'Universite' de Paris, College de France and Ecole des Hautes Etudes at Paris under MM. Gaston Paris, Paul Meyer, Mevelfatio, Antoine Thomas, Gustave Lanson, etc., 1900-'01. During 1901-'02 he was Instructor in German, French and Spanish at Brooklyn Polytechnic Institute, and student of Old Provincial, Columbia University. In 1902 he was elected Instructor in Modern Languages at Delaware

College, and in 1904 he was elected Professor of Modern Languages at that College which position he now occupies. Prof. Smith is a member and Secretary of the Phi Kappa Phi Fraternity.

EDWARD W. McCASKEY, Capt. 21st Infantry, U. S. A.
*Professor of Military Science and Tactics, and
 Commandant of Cadets*

Captain McCaskey was born on August 30, 1863. Having graduated from Lancaster, Pa., High School in 1879, he entered Franklin and Marshall where he remained until 1882, when he entered West Point. After graduating in 1886, he was stationed at Fort Duchesne, Utah, until 1887, when he entered the Fort Leavenworth School for Officers, where he remained for one year. He served in the Sioux War, 1890-1, and was promoted to First Lieutenant in 1892. For four years, 1892-6, he was stationed at Pennsylvania State College, and in 1896 he traveled through Europe. In 1898 he served in the Cuban Campaign, and in 1899, was promoted Captain. During 1899-1902 he served in the Luzon P. I. Campaign; during 1902 he was stationed at Fort Snelling, Minn., and in 1904 he was appointed to his present position at Delaware College.



MERRILL VAN GIESEN SMITH, M. E.

*Professor of Mechanical and Electrical
 Engineering*



Prof. Smith was born in 1871 at Montclair, N. J., where he received his early education in the public schools. After graduating from the Stevens High School he entered the Stevens Institute of Technology, graduating with the degree of M. E., in 1896. Before coming to Delaware College in September, 1904, he held the following positions:—Editorial Staff, Railroad Gazette; Instructor in Mechanical Engineering, University of Pennsylvania; Professor of Mechanical Engineering, Thomas S. Clarkson School of Technology. He is a member of the Phi Kappa Phi Fraternity.

CLINTON O. HOUGHTON, B. A.

*Assistant Professor of Zoology and Lecturer in
Entomology*

Professor Houghton was born at Helena, N. Y., April 7, 1873. He was prepared for college at the Potsdam State Normal School, where he graduated in June, 1898. In September of the same year he entered Cornell University, where, in June, 1902, he graduated with the degree of B. A. He came to Delaware College in October, 1902.



CLARENCE A. SHORT, M. S.

*Assistant Professor of Mathematics and Civil
Engineering*



Professor Short was born near Georgetown, Del., July 1, 1873. After receiving his education at the public school, in September, 1889, he entered Delaware College, where he remained one year. During the next three years he taught school near Laurel and at Shortley, Del. He re-entered Delaware College in April, 1893, and graduated in 1896, valedictorian of his class, with degree B. C. E. He has since occupied the following positions:—Commandante of Cadets and Professor of Mathematics and History at Worthington Military School, Lincoln, Neb., 1896-7; Professor of Civics, History and Higher Mathematics at Hortt's School for Boys, Birmingham, Cal., 1897-8; Professor of Mathematics, Commercial Branches and Rhetoric at Fayetteville Military Academy, Fayetteville, N. C., 1898-9; Principal of North Carolina Military Academy, Red Springs, N. C., where he taught mathematics and English; Instructor in Mathematics and Engineering, Delaware College, September, 1903-March, 1904; Assistant Professor of Mathematics and Engineering, Delaware College, March, 1904, to the present time. In the summer of 1904 he took a special course in Mathematics and Civil Engineering at University of the South, Sewanee, Tenn. In June,

1905, he received from Delaware College the M. S. degree.

LEWIS ALFRED FREUDENBERGER, E. E.

*Assistant in Mechanical and Electrical
Engineering*

Professor Freudenberg received his early education at Bethlehem High School, and was prepared for college at Moravian Preparatory School. In 1901 he graduated, with the degree E. E., from Lehigh University, where he was associate member of the A. I. E. E., and Instructor in the Department of Physics and Electrical Engineering before coming to Delaware in 1904. He is a member of the Tau Betta Pi Fraternity.



REV. WILLIAM J. ROWAN, Ph. D.

Instructor in English, History and Philosophy



Dr. Rowan was born in Philadelphia, and received his early education at the public schools of Chester, Pa. In 1891 he graduated from Lafayette College, with the A. B. degree. In 1894 he received from the same college the degree of A. M. He entered the Theological Seminary at Princeton, graduating in 1894. He became pastor of the Broadway Presbyterian Church, of Baltimore, on June 17, 1894. In September, 1899, he accepted a call to the Newark Presbyterian Church. In 1902 he was elected to the position of Instructor in Philosophy and Oratory in Delaware College, which position he now holds in connection with his pastoral duties. While in Baltimore he studied under Hon. W. H. Purnell, L. L. D., for many years president of Delaware College, then president of New Windsor College. He presented and defended thesis on Francis Andria and the Precursors of the Protestant Reformation, besides being examined on history in general and the mythologies of Greece and Rome, receiving the degree of Ph. D.

LEE O. WILLIS, B. M. E.

Instructor in Shopwork

Mr. Willis was born in Cecil County, Md., December 2, 1877. He prepared for college in the Newark public schools, and in 1893 he entered Delaware College, graduating in 1897 with the degree of B. M. E. Since graduating, he has held positions with the American Machine Co., Newark; Trump Bros. Machine Co., Wilmington; Betts Bros. Machine Tool Co., Wilmington, and since 1900 he has been Instructor in Shopwork at Delaware College.



HAROLD EDWARD TIFFANY, S. B.

Instructor in Chemistry



Mr. Tiffany was born November 14, 1879. After having prepared for college at Wilkes-Barre Public School and at Keystone Academy, Factoryville, Pa., he entered Bucknell University, and, in four years, graduated with the S. B. degree of chemistry, winning the Hallopeter prize in chemistry, and receiving the degree of Magna Cum Laude. He spent the following autumn and winter at Harvard University, doing advanced work in chemistry and research. Before taking up his present position in the winter of 1905, he taught some time in the Everett High School near Boston.

HERBERT S. JACKSON, A. B.

Instructor in Botany

Mr. Jackson was born at Augusta, N. Y., August 29, 1883. He graduated from the Ithaca High School, Ithaca, N. Y., in 1901, and entered Cornell University, graduating in 1905, with the degree of A. B. On September 1, 1905, he was elected to his present position of Assistant Mycologist at Delaware College Experiment Station and Instructor in Botany at Delaware College.



ARTHUR T. NEALE, M. A., Ph. D.

Lecturer in Agriculture

Dr. Neale was born in 1853 at Middletown, Conn. He graduated from the Middletown High School in 1869, and from Wesleyan in 1874, with the degree of B. A. The following year he took a post-graduate course in chemistry and for the next three years he was assistant in the chemical laboratory of the above named college, where in 1877, he received the degree of M. A. He then went to Prussia, where at Greifswald he took a one year course in organic and physiological chemistry. The next two years he matriculated as a student specialized in physiological and agricultural chemistry at Halle, Prussia, where he spent two years as assistant in the Experiment Station. In 1880 he returned to the United States and took charge of the Agricultural Experiment Station of New Jersey. In either 1882 or 1883, he received the degree of Ph. D. from Rutgers, where he was chemist until 1889, when he came to Delaware.

CHARLES L. PENNY, M. A.

Lecturer in Agricultural Chemistry

H. B. EVES, D. V. M.

Lecturer in Veterinary Science

FREDERICK D. CHESTER, M. S.

Lecturer in Mycology

Professor Chester was born on October 8, 1861. After preparing for college at Washington University Preparatory Department, St. Louis, he entered Cornell University, graduating in 1882. He was Professor of Geology and Mineralogy in Delaware College, 1882-5, and was a post-graduate student at Cornell University, 1885-87, receiving the degree of M. S. He was Professor of Geology and Botany in Delaware College, 1887-94; Mycologist of the Delaware College Experiment Station, 1889-1903; Bacteriologist, 1903 to date; Fellow of the Society for the Promotion of Agricultural Science, 1895; Charter Member of the Society of American Bacteriologists, 1899; Vice-President of the latter Society 1902-3; member of the Council and Chairman of the Committee on Bacteria Classification; and, from 1883 to 1891, author of papers and reports on the geology of Delaware. He has been Director of the State Bacteriological Laboratory, and Bacteriologist for the State Board of Health. Professor Chester is the author of numerous papers, bulletins and reports on Economic Mycology and Bacteriology from 1888 to date; of "A Manual of Determinative Bacteriology," (Macmillan Co., 1900); and in 1905 he was selected to prepare the memoir on the Bacteria for the "North American Flora," a work of many volumes by different authors.



CHARLES P. CLOSE, M. S.

Lecturer in Horticulture

Prof. Close was born at New Buffalo, Mich., Jan. 21, 1868. His early education was received at the Three Oaks Schools and at High School of High Grove, Cal. He took a commercial course in the Indiana Normal and Business Institute, where he graduated in 1891. In 1895, after taking a four years' course, he received from the Michigan Agricultural College the degree of B. S., and in 1897 he received from the same college the degree of M. S. From December, 1895, to September, 1899, he was stationed at the New York Agricultural Experiment Station, Geneva, N. Y.; and from September, 1899, to October, 1901, at the Utah Agricultural College, Logan, Utah; and in October, 1901, he took up his present work at Lecturer in Horticulture at Delaware College, and Horticulturist in the College Experiment Station.



OFFICERS OF EXPERIMENTAL STATION

GOVERNING BOARD

This department is under the immediate control of a Governing Board which is composed of the President of the College, the Director of the Station, the Professor of Agriculture in the College, the Treasurer of the Board of Trustees, and the members of the Committee on Agriculture of the Trustees.

GEO. A. HARTER, President.

ARTHUR T. NEALE, Vice-President.

JAMES A. FOORD, Secretary.

STAFF OF STATION WORKERS

ARTHUR T. NEALE, M. A., Ph.D., Director and Agriculturist.

FREDERICK D. CHESTER, M. S., Mycologist.

CHARLES L. PENNY, M. A., Chemist.

CHARLES P. CLOSE, M. S., Horticulturist.

CLINTON O. HOUGHTON, B. A., Entomologist.

CLAYTON O. SMITH, M. A., Assistant Mycologist.