

DEL 906386  
UNIV OF DELAWARE  
C/O LIBRARY  
NEWARK, DE 19717  
\*\*5-DIGIT 19717  
###

# The NewAr Post



Cyclocross riders  
take Iron Hill  
by storm/lb



25¢

Master carver Bill Veasey/lc  
See special holiday ads

Vol. 76, No. 77

December 9, 1987

Newark, Del.

## Parade, ball highlight Delaware's bicentennial festival

by Cathy Thomas

DOVER — It was the action of Constitutional delegates 200 years ago that gave Delawareans cause to celebrate Monday. On Dec. 7, 1787, Delaware ratified the United States Constitution, becoming the first state to join the union.

School children, parents, professionals, dignitaries and even residents from other states descended upon the capital Monday to join in the

### Ratification Celebration.

Among the dignitaries present during the day was former United States Supreme Court Justice Warren Burger, chairman of the National Heritage Commission.

Also in Dover were U.S. Senators Joseph Biden and William Roth and Congressman Thomas Carper.

The celebration began with the dedication of a plaque at the Golden Fleece Tavern in downtown Dover. It was in the tavern that the delegates met to discuss the Constitution.

"A lot of us think that a democracy is

something that comes very natural," said Gov. Michael N. Castle. Democracy, he said, was very new in those days.

"They made decisions about freedom for individuals. They set the world on a whole new course. We should all take great pride in this."

The bicentennial parade began about mid-morning. High school bands from around the state were represented. Several organizations also entered floats in the parade. The highlight of the parade was the arrival of dignitaries in antique carriages.

Halfway through the parade, a special

ceremony was held in front of Legislative Hall. During the ceremony, former Burger spoke on Delaware's role in forming the union.

"Delaware's action is more important than just being first. All of the states were watching each other," said Burger. "When Delaware acted and acted unanimously, it set a pattern."

Burger said when the Constitution was drafted in Philadelphia 200 years ago, it was not the end, but the beginning. The Constitution then had to be approved by all the states.

See 200/17a

## City voter registration changes are in place

by Cathy Thomas

Newark's new voter registration system will get its first test during the City Council elections next April.

Under the new system, city residents must only register with the county to vote in all elections, including those in the city. In the past, residents had to register separately with the city to vote in city elections.

Sam Burns, Newark Election Board president, had been concerned that the city would not get all the information for the new system from the county elections board in time for the spring elections.

However, Burns said the city now has received procedure details and the list of registered voters.

Burns said they will continue to maintain city records to avoid any confusion among voters. "We're going to keep our books active and make sure that everyone will have the chance to vote."

In researching the voter registration rolls, Burns said they found about 100 people were only registered to vote in city elections. Those residents will be encouraged to register with the county.

"We'll have two registration days prior to the (April) election," Burns said.

Residents can also visit the Municipal Building, 220 Elkton Rd., to pick up a voter registration application.

Although voter registration rolls are being combined with the county records, Burns said the city will continue to hold its own elections. "We'll be doing

SEE VOTE/17a



### COVER STORY

## Newark High hosts Elizabethan Rout

by Nancy Turner

Welcome, ye lords and ladies, to Newark High School's 17th annual Elizabethan Christmas Rout.

Leave winter's dark chill to the night and enter the warmth of her majesty's mock palace on East Delaware Avenue, where flickering candles illuminate a magical passage through time, enabling assembled guests to join Queen Elizabeth I and her court in celebrating the yuletide season with a 16th century blend of feasting, merriment and madrigal singing.

Held the first and second weekends in December, the rout has become a hallmark event on Newark's Christmas calendar, and reservations for the event

are usually booked months in advance.

Drawing sell-out audiences since its inception by Donald Rittenhouse in 1971, the full evening of entertainment is the successful product of months of preparation, love and dedication by Newark High Madrigal Consort students and musicians, their parents, faculty members and alumni.

Routs were taking place in Europe for years prior to the reign of Elizabeth I (1558-1603), but this daughter of Henry VIII is most commonly credited with their development and mass popularity.

See ROUT/16a

### INDEX

News.....2a  
Schools.....13a  
University.....14a  
Opinion.....18a  
Sports.....1b  
Business.....7b  
Classified.....8b  
Business.....12b  
Lifestyle.....1c  
Churches.....4c  
Community.....5c  
Entertainment.....6c

### FACT FILE

#### SPCA offers rabies shots

The Delaware Society for the Prevention of Cruelty to Animals (SPCA) will provide rabies shots for cats from noon to 3 p.m. Sunday, Dec. 13 in the Newark Police Department gymnasium on East Main Street.

All cats in northern Delaware must have rabies shots, a state order which was issued following an outbreak of the disease among small animals in the area. Several rabid raccoons have been found in and around Newark.

Fee for the shots is \$3. Cats must be six months or older, and must be brought to the session in a carrier.

The SPCA will hold additional vaccination sessions in February 1988.

### KEEP POSTED

#### Newark groups collect food, toys for the holidays



The Newark Area Welfare Committee will be preparing and distributing Christmas food baskets to needy families the week of Dec. 20.

The Committee is seeking volunteers to help prepare the baskets, and monetary donations with which to purchase turkeys. To volunteer, call Peter Wells at 737-4711. Donations should be sent to the Newark Area Welfare Committee, P.O. Box 390, Newark, DE 19715-0390.

Other local Christmas giving programs include:

- Val's Needy Family Fund, headquartered at Nardo's Barber Shop in Fairfield Shopping Center.
- WNRK's Christmas Toy Collection for Foster Children, with drops at the radio station on Walther Road and at Christiana Mall.
- The Marine Corps Reserve's Toys for Tots campaign, with collection at the Avco Financial Services office in Possum Park Mall-Liberty Plaza shopping center.
- The Delaware Army National Guard's fourth annual canned food drive, which is under way until Saturday, Dec. 12. Guardsmen are accepting donations at the Possum Park Wise Owl, the Community Plaza Shop-N-Bag, the Stanton Shop Rite, the Kirkwood Highway Pathmark and the Prices Corner Acme.





THE NEW

# PRICES CORNER

## Gift Shopping HQ.

Come Visit  
The New Exciting Recently Refurbished

## Prices Corner SHOPPING CENTER

Now Better Than Ever!

### BOY'S NIGHT OUT

FRI., DEC. 11th - 5 til 9 PM

FREE GIFT WRAP - REFRESHMENTS

SPECIAL VALUES STOREWIDE

WE CARRY HANDBAGS • SLIPPERS • ACCESS.

GIFT CERTIFICATES AVAILABLE

PERSONALIZED SERVICE



Your place for a wide range of sizes, the best selection... and personalized service!

OPEN SUN.  
12-13 & 12-20  
Noon-4 PM

OPEN MON.-SAT. 9:30-5:30, WED. & FRI. TILL 8 PM  
MASTERCARD • VISA • WSFS

### NATURALIZER

SHOE STORE

PRICES CORNER SHOPPING CENTER  
(NEXT TO GORDON'S JEWELERS) 992-0444



Father  
knows best...

but  
a son has  
his own style.

Whether it's traditional dress shoes or contemporary fashion shoes you're looking for, Father and Son is the store for all men's footwear needs.

**FATHER & SON**

Prices Corner Shopping Center  
& Granite Run Mall



### R. K. Flowers and Gifts

HOLIDAY SPECIAL

10% OFF

SALE STARTS FRI. 12-11-87

WIDE VARIETIES OF GIFTS  
DRIED AND SILK ARRANGEMENTS  
FLOWERS FOR ALL OCCASIONS  
GREEN PLANTS AND DISH GARDENS  
FUNERAL AND WEDDING DESIGNS  
FRUIT BASKETS AND BALLOONS  
(NEXT TO THRIFT DRUG)

STORE HRS:  
MON. TO FRI. 9:00 AM TO 9:00 PM  
SAT. 10:00 AM TO 9:00 PM  
SUN. 11:00 AM TO 5:00 PM

PRICES CORNER SHOPPING CENTER,  
KIRKWOOD HIGHWAY, WILMINGTON  
302/999-7745



MasterCard VISA  
WE DELIVER FLOWERS  
ANYWHERE TILL 2 PM

YOUR CHOICE ON ALL MERCHANDISE  
MIX OR MATCH ANY COMBINATION

BUY  
2  
GET  
1

**FREE**

Thom McAn  
All Delaware  
Locations...

Expires Sun., Dec. 13th

Limited time only.  
\*Good on all shoes or handbags  
and accessories. FREE selection  
must be of equal or lesser price  
than the lowest priced item  
purchased.

NEW PEANUTS PERSONALIZED  
COMIC STRIPS--  
CUSTOM-MADE GREETINGS  
FOR FAMILY, FRIENDS!



### PEANUTS



GOOD GRIEF! YOUR FAMILY AND FRIENDS CAN JOIN THE PEANUTS COMIC STRIP ALONG WITH SNOOPY, CHARLIE BROWN AND ALL THE GANG. YOU CAN CUSTOM-PRINT A RECIPIENT'S NAME ONTO ONE OF SEVEN SPECIALLY DEVELOPED COMIC STRIPS- MAKING THE RECIPIENT THE "TALK" OF THE WHOLE PEANUTS GANG. BE PART OF AMERICA'S FAVORITE COMIC STRIP. SEND THEM TO EVERYONE YOU KNOW! PRINTED IN SECONDS WITH ENVELOPE AND CARD FOR JUST \$2.95. IT'S A GREAT NEW HOLIDAY GREETING!

### MATTHEWS

Hallmark

\* Partyware \* Gifts \* Cards \* Balloons \* Office Supplies  
PRICES CORNER SHOPPING CENTER  
994-8104

Kirkwood Plaza  
998-5797

Newark Shopping Center  
366-1117

Christiana Mall  
366-7622

GOOD THINGS COME IN MATTHEWS PACKAGES!

70 LOCATIONS - DELAWARE, MARYLAND, VIRGINIA,  
NEW JERSEY, NORTH CAROLINA, PENNSYLVANIA

PC  
corner

## LIQUORS

### HAPPY HOLIDAYS

Everything  
in Stock

Visit Our GIFT DEPARTMENT and choose a gift from a wide selection of BRAND NAMES at Affordable PRICES...

Prices Corner Liquors Prices Corner Shopping Center 898-1080

### Highlight Your Holidays!



POST IMPRESSION  
PERMS  
Reg. \$55.00

SALE \$46<sup>88</sup>

Cut Included  
Sale Thru Dec. 12th

20% OFF  
Frostings and  
Highlightings  
Reg. \$35.00

SALE \$28<sup>00</sup>

Sale Thru Dec. 19th

### JCPenney Styling Salon

Prices Corner Shopping Ctr.  
Wilmington, DE 19808  
Phone 998-3274 or 998-1131 ext. 253

#### WEEKLY SPECIALS

Monday  
CHILDREN'S DAY  
Haircuts \$8.88  
Reg. \$10.00 (Low Dry Extra)

Tuesday  
SENIOR CITIZEN'S DAY  
15% OFF  
Any Service on Merchandise Not On Sale

Wednesday - MEN'S DAY  
Haircuts \$8.88  
Reg. \$10.00 (Low Dry Extra)

Thursday - LADIES' DAY  
Haircuts \$8.88  
Reg. \$10.00 (Low Dry Extra)



## NEWS

## Levinson seeks legislation on catastrophic health program

by Cathy Thomas

Delaware is the only state in the country that doesn't have a medical program for the needy, according to David Levinson, state insurance commissioner.

Levinson, who spoke in Newark last week, has been working the past couple of years on proposals to provide a catastrophic health program in the state. Legislation to create the program has not yet made it through the General Assembly.

Levinson says such a program can provide health care for the indigent at no incremental cost to the taxpayer. This can be done by simultaneously changing the Medicaid system to an HMO approach with a primary care physician required before reference to a specialist.

"Several federal studies have been done that indicate there is a cost savings of 20 percent by changing the Medicaid system to this more efficient kind of approach," said Levinson. "That is more than enough to pay for the entire medically indigent and the catastrophic program that we have proposed."

The outcome of this proposal would also be to reduce health care costs and health insurance premiums for the rest of society, according to Levinson. Currently, the costs of caring for the

medically indigent are paid for by everyone through higher medical and insurance costs.

Hospital and insurance costs are pushed even higher by that fact that many illnesses could be avoided, Levinson said.

"At the turn of the century, those diseases which killed Americans, Americans had no control over. Today seven of the ten leading causes of death in this country are the result of those conscious, voluntary lifestyle choices."

Levinson says Americans must begin to change their lifestyles by exercising, getting regular check-ups and avoiding drugs or alcohol. More dollars will then be available to care for those whose illnesses are not preventable.

"The wasted dollars are those going to deal with avoidable illnesses," Levinson said.

Health insurers must build economic incentives in their group health insurance policies to motivate Americans to change their lifestyle behavior.

"I believe the American people are capitalists. You want an American to do something, pay him to do it," said Levinson.

"People won't stop smoking to save their lives, but we all know someone who will stop smoking for a month to win a \$50 bet from a friend."

Although some insurance providers have been resisting it, Levinson will attempt to get

mandatory coverage for preventative screenings, check-ups and immunizations included in group health insurance policies. Levinson, whose 91-year-old father still practices veterinary medicine, told him of the importance of preventative medicine.

"He once told me, 'No one ever asked me to cure a chicken'. They pay him to keep the flock from getting diseased to start with. I think if everybody knew the human species were going to be treated like chickens, you'd see a quick change in the lifestyle behavior of Americans."

Levinson is not overly optimistic about some of his ideas making it through the state legislature.

"The (Castle) administration is not going to support any health care legislation it has not drafted."

### CORRECTION

The name of Patrick Cochran was mistakenly omitted from a story on military academy nominations which appeared in the Dec. 2 issue of the Post. Cochran has been awarded an alternate appointment to the U.S. Naval Academy by U.S. Sen. William V. Roth Jr. The Post regrets the error.



Urging parents to "demilitarize the playground" are Betsey Granda and Debbie Hegedus of the Newark Peace Fellowship. The organization set up an informational stand in front of the downtown post office on Main Street.

Photo/Robert Craig

CHRISTMAS WRAP  
YOUR HOME with  
**Plastmo**  
Vinyl Raingutters

**FREEDOM**

The end of:

- ✓ Leaking
- ✓ Rusting
- ✓ Denting
- ✓ Peeling

**MAYER, INC.**

1014 ELKTON RD., NEWARK  
(302) 366-1311

### WANTED 5 HOMES

Reputable manufacturer's rep for NEW SOLID VINYL SIDING and/or SOLID VINYL REPLACEMENT WINDOWS will select 5 Lucky Home Owners at various sites for installation at drastic savings. We think it's good business to introduce our products in this way.

Call Today for More Information  
About this Unusual Offer...

**1-800-255-4433**

CRAFT MASTER BUILDERS

Pa., N.J., Del.

\*FINANCING  
AVAILABLE

## ABOVE AVERAGE HOLIDAY GIFTS FOR THE ABOVE AVERAGE SIZE MAN.

STEVEN H. ADLER HAS  
HUNDREDS OF HOLIDAY  
GIFTS IN SIZES TO FIT THE BIG  
AND TALL MAN.

Shop Steven H. Adler this  
holiday season for that  
special man in your life.  
Choose from a fine selection of suits, sportcoats, rainwear, slacks, sweaters, dress, sport and knit shirts, accessories and much more.



enro

Built to Look Good. Built to Last.

STEVEN H. ADLER  
**BIG & TALL**  
MENS APPAREL

STEVEN H. ADLER. THE PERFECT CHOICE FOR THE HOLIDAYS.

SUNDAY OPEN 12-6

110B Astro Shopping Center Kirkwood Highway  
Newark, DE 19711

**LA-Z-BOY®**

## HOLIDAY SALE

SPECIAL HOLIDAY SAVINGS ON GENUINE  
LA-Z-BOY® RECLINA ROCKERS®

Your Choice  
**\$399**



An exciting  
contemporary  
La-Z-Boy® chair  
featuring thickly padded  
arms and triple pillow  
back to pamper you in  
comfort

Here's the perfect opportunity to add the extra comfort and beauty of a quality La-Z-Boy® Recliner to your home. Save \$140 on our three best selling recliners now during this very special sale. Limited time only—so hurry in for the best selection!



This Reclina-Rocker® chair is an attractive addition to your traditional or contemporary room. Comfort and La-Z-Boy® quality make it a favorite.

American traditional styling and legendary La-Z-Boy® comfort are yours with this smart Reclina-Rocker® chair. Features popular button-tufted wing back design.



**La-Z-Boy®**  
*Showcase shoppes*



**NEWARK**  
Meadowood Shopping Center  
2651 Kirkwood Hwy. Newark, Delaware  
(302) 737-9800 FREE DELIVERY

Hours: Mon. thru Sat. 10-9, Sun. noon to 5  
Up to \$1,000 Instant Credit to qualified buyers

Exceptional Savings on the Largest Selection of  
Genuine La-Z-Boy® Motion Furniture in the Delaware Valley

**WILMINGTON**  
4723 Concord Pike, Wilmington, Delaware  
Near Concord Mall, next to the Sheraton  
(302) 478-1939 FREE DELIVERY





## NEWS



The Newark Community Jazz Ensemble braves the cold to provide holiday entertainment Saturday in front of the Academy Building on Main Street.

Photo/Robert Craig

## Petroleum found in White Clay

The discovery of petroleum last week in a tributary of White Clay Creek is being investigated by state environmental officials.

The oil was found Wednesday in the creek behind the Avon Products Inc. plant in Newark.

"A group of surveyors, working near the Avon plant, noticed a sheen on the water," said David Small, a spokesman for the Department of Natural Resources and Environmental Control.

The oil is believed to be left over from a 6,000 gallon oil spill last March at the Avon plant. "We feel that it's some residual product in the ground left from that," said Small.

The tank from which the oil spilled in March is no longer in use.

"Those tanks have been emptied and cleaned," said Small. "That led us to believe it was

some product already in the ground.

Avon has installed a new tank which is believed to be leak-proof.

The recent heavy rains may have changed water tables, allowing the old oil to get into the creek.

Booms were placed in the water and near a storm water drain from which it is believed the oil may have originated. Booms were also placed at the intakes for the Wilmington Suburban Water Corp. as a precaution. Water supplies were apparently not contaminated by the oil, according to Small.

"We did a helicopter survey and it appeared that the product was being collected in the booms."

State officials will monitor the creek for any further contamination.

### The NewArk Post

Tom Bradlee  
Publisher

Neil Thomas  
Editor

Tina Mullinax  
Advertising Manager

Jeff Mezzatesta  
Distribution Manager

**News Staff** — David Woolman, sports reporter; Cathy Thomas, news reporter; Nancy Turner, feature reporter; Robert Craig, photographer; Tracy Holter, office manager-receptionist.

**Advertising Staff** — Ray Nemtuda, major account sales; Karen Pagan, advertising representative; Dawn M. Badger, layout artist; Rhonda Beamer, classified advertising.

**Distribution Staff** — Gwynne Pepsin, distribution associate.

153 E. Chestnut Hill Rd. Newark, Del. 19713

Newark's newspaper since 1910



NNA

Member: Maryland-Delaware-D.C. Press Association, National Newspaper Association.

### SERVING UP DOWNTOWN NEWARK

It wouldn't be the holidays without great food, downtown Newark has restaurants for every taste....



Whether it's a quick bite between shopping, or a leisurely lunch with the crew from the office, come to downtown Newark for your holiday feasting!



44 Downtown  
Stores  
Validate  
Parking

**SUBWAY**  
Sandwiches & Salads  
155-157 E. MAIN ST. 733-0989  
OPEN 11 AM - 7 DAYS  
WE BAKE OUR OWN BREADS. WHEAT & WHITE. WE HAVE A VARIETY OF SALADS.

**BREAD & COMPANY**  
The International Cafe  
90 E. MAIN ST. 453-1556  
OPEN FOR BREAKFAST 7 DAYS

**Margherita's Restaurant**  
134 E. MAIN ST. 368-4611  
NEW YORK STYLE PIZZA

**CHOCOLATE CHIPPERY**  
47 E. MAIN ST. 737-3454

737-5308 **ASHBY'S OYSTER HOUSE** 737-5308  
CATERING  
QUALITY CATERING FOR ALL OCCASIONS  
Business Events • Weddings • Outdoor Affairs • Picnics  
• Christmas Parties • Cocktail Parties  
Take-Out Available

**sbarro**  
NEWARK OPERA HOUSE  
MAIN AND ACADEMY STREETS  
731-2100  
OPEN 11 AM - MIDNIGHT DAILY  
PRIVATE ROOMS OR CATERING AVAILABLE FOR THE HOLIDAYS

**The Italian Eatery**  
Visit Our New Dining Room  
Table Service After 6 PM  
WINE COCKTAILS  
10 DRAFT BEERS  
INCLUDING BASS ALE  
AND DOCK STREET  
GRAZING MENU

**SALOON AND RESTAURANT**  
**Klondike**  
LUNCH and DINNER SPECIALS  
CATERING  
PRIVATE PARTIES  
BUSINESS MEETINGS  
SUNDAY BRUNCH  
158 E. MAIN ST. 737-6100

**SPACE II PIZZA and RESTAURANT**  
203 E. MAIN ST. 368-1515  
(Corner of Chapel & Main Sts.)  
COME TRY OUR GYROS, SOUVLAKI, and GREEK DESSERTS

**EAST END CAFE**  
RESTAURANT and BAR  
NEWARK'S NEWEST BAR & RESTAURANT  
OPEN 7 DAYS  
270 E. MAIN ST. 738-0880  
(the right before Travel Lodge)

**LOWEST PRICES!!!**

**SALE \$19900**

**COMPLETE**

**"Contempo"**  
Imagine a stained and lacquered bed with headboard at this low price! Solid Wood! (King, Queen or Super Single All Same Price)  
Sheet Set & Mat. Pad Included

**24900 SALE**

**COMPLETE**

**"Corona"**  
One of our most popular beds! A handy 3-section bookcase headboard makes this stained and lacquered bed a favorite! (King, Queen or Super Single All Same Price)  
Sheet Set & Mat. Pad Included

**WATERBED LAND**

90 DAYS SAME AS CASH      0% FINANCING AVAILABLE

**"If you buy anywhere else... you're just paying too much!"**

**BRADLEES/PATHMARK SHOPPING CENTER**  
4397 KIRKWOOD HWY. 998-6222

**PENN-MART SHOPPING CENTER**  
DUPONT HWY. & BASIN RD. 322-0940

**Gifts for HIM**

**John Deere 1st in**

**Quality and Performance Now On Sale Just In Time For Christmas!**

**Clean down to the concrete**

with a 3-hp John Deere Snow Thrower

Clear a 20-inch path quickly and easily with the tough 322 Snow Thrower from John Deere. It has a 2-cycle, 3-hp engine, with self-priming carburetor for easy starts. Snow discharge vanes can be locked in three different positions to throw snow up to 18 feet. Solid-state ignition and electric start kits are available. See us for these hard working, economical snow throwers soon.

**Model #322 Reg. \$399. SALE \$349<sup>95</sup>**

**Our 520 Snow Blower gives you two-stage performance for a compact price**

Our 520 is an economical 3 1/2-hp, 20-inch machine. And a true two-stage snow blower with auger pickup and fan-boosted discharge. Able to handle snows as deep as 14 inches. Stop in today and see it.

**Reg. \$609. \$549<sup>95</sup>**

**160 Lawn Tractor with Blade**

12 1/2-hp, 5-speed tractor with 42-inch front blade makes short work of snow removal. Blade angles right or left. Skid shoes allow use on gravel, uneven surfaces.

**Model 160 42 Inch W/38" Inch Mower & Front Blade Reg. \$2744. SALE \$2469<sup>95</sup>**

**185 Lawn Tractor with Snow Thrower**

This 17-hp, hydrostatic drive machine clears a 38-inch path through heavy snow. You save time and your energy for better things than shoveling snow.

**Reg. \$4449.00. SALE \$3995<sup>00</sup>**

**420 Tractor and Snow Blower**

New two-stage snow blower for heavy snow conditions. Features adjustable skid shoes, spout deflector; hydraulic chute angling. Clears a 47-inch swath.

**Model 420 - 24 Hp Gas 47 Inch Snow Thrower Reg. \$8676.00. SALE \$7795<sup>95</sup>**

**COOPER'S LAWN & HOME**  
2688 Pulaski Hwy. (Rt. 40) GLASGOW, DELAWARE (302) 834-0114

**COOPER ENTERPRISES**  
(Just 9 Mi. So. of Ches. City, MD) CECILTON, MARYLAND (301) 275-2195



## NEWS

## NEWS FILE

## Arrest

## Woman accused

A 30-year-old Newark woman was arrested last week by Delaware State Police detectives on charges of stealing from her employer.

According to state police, Anna R. Knauer of the Kimberton Apartments is accused of stealing \$15,922 from the Ames Department Store in the Penmark Shopping Center off Basin Road.

The thefts occurred between November 1986 and November 1987 while Knauer was employed in the money room of the store, police said.

Police said Knauer allegedly stole cash on 111 occasions while compiling bank deposits. She has been released on unsecured bond pending trial.

## Castle

## Newark appointees

Gov. Michael N. Castle has announced the following appointments of Newark residents to state boards and commissions:

- Appointed to the White Clay Creek Preserve Task Force were Robert Hill, Emory-Hill and Company, Inc., 413 White Clay Center Dr.; Dorothy Miller, Natural Stream Valley Coalition, 430 Orchard Rd.; Dr. Leon Campbell, 76 Polly Drummond Rd.; Donald Sharpe, 5 White Clay Creek Dr.

- Donna M. Organist, 14 Ritter Lane, has been appointed to a two-year term on the Board of Registration of Geologists.

## Vols

## Ulster Project

Ulster Project Delaware is seeking youths ages 14-16 who would be interested in hosting a teenager from Northern Ireland during July 1988.

Under the auspices of Pacem in Terris, the Ulster Project will bring Protestant and Catholic youths from the town of Banbridge, Northern Ireland, to live with Delaware families for one month.

During that month, it is hoped the Northern Irish teens will get to know each other on neutral ground so that on their return home they can help to foster tolerance, understanding and friendship within their divided community.

For information, contact Sally Milbury-Steen at the Pacem in Terris office, 1106 Adams St., Wilmington, DE 19801, or call 656-2721.

## State Police seek clues in murder of Newarker



Shirley Ellis

Delaware State Police are still investigating the death of a 23-year-old Newark woman whose body was discovered over a week ago.

The body of Shirley Ellis, Brookmont Farms, was found Sunday, Nov. 29 in the Old Baltimore Pike Industrial Park, just east of Del. 72.

According to Cpl. William Eubank, a State Police spokesman, there are no prime suspects in the murder investigation at this point.

Ellis was last seen the evening of Nov. 29 when she walked to U.S. 40 to catch a ride to a Wilmington hospital. She visited a friend in the hospital.

Police have been unable to determine what happened to her after she left the hospital.

Eubank said anyone with information about the Ellis death is asked to call state police at 323-4411 or Crimestoppers at 1-800-TIP-3333.

## Chrysler workers arrested

As part of an ongoing investigation into drug use at the Chrysler Corp.'s Newark Assembly Plant, police arrested two Chrysler employees Thursday.

Arrested as they arrived for work were Emanuel DeShields, 34, Chestnut Crossing, Newark and Warren Floyd, 39, of Wilmington, police said.

The two men were arrested after police received information that DeShields was wanted on outstanding charges and the selling of drugs inside the plant.

According to police, DeShields was found to have 44 bags of cocaine in his jacket at the time of his arrest. Floyd was allegedly carrying five bags of cocaine.

Police received permission to search the vehicle and found a quantity of marijuana.

DeShields has been charged with trafficking in cocaine and possession of cocaine with intent to deliver. Floyd is charged with possession of cocaine with intent to deliver, possession of marijuana and maintaining a vehicle for the delivery of a controlled substance.

Police say more charges may be pending in the case.

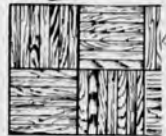
The arrests follow a joint investigation by Newark Police, New Castle County Police, Delaware State Police, the Drug Enforcement Agency and the Delaware Attorney General's office.

## CHRISTMAS DECORATING SALE

Celebrate With Incredible Savings on Bruce Hardwood Floors During Our BIG Bruce

Decorating Sale

SAVE ON THIS BEAUTIFUL BRUCE FLOOR Reg. \$2.60 sq. ft. NOW ONLY \$2.30 sq. ft.



FREE BRUCE DECORATING IDEAS CATALOGUE with every Free Estimate

FREE SEMINAR IN JAN. Sign-Up Now: SALE ENDS 12-24-87

MAYER, INC.

1014 Elkton Rd., Newark, DE (302) 366-1311

# DON'T BE CRUEL TO A HEART THAT'S TRUE.

Be nice to your heart. Eat low cholesterol foods. Get plenty of exercise. Pack up the cigarettes. And take life a little easier. Your heart will love you for it.



American Heart Association

WE'RE FIGHTING FOR YOUR LIFE

Season's Greetings  
Wishing Everyone Happy Holidays  
from

**TOWN & COUNTRY SALON**

For The Whole Family

TWO LOCATIONS

LIBERTY PLAZA

Newark, Del.  
6 Years)

737-1855

PEOPLES PLAZA

Glasgow, Del.  
(986)

836-3333

ALL PERMS Reg. \$38.00

Sale Price Now \$32.00

Save \$6 With This Coupon

Expires 1/15/87

OFFER GOOD

ONLY

MON.-THUR.

9 AM-3 PM

Coupon Good At

160 Peoples Plaza

Glasgow Location Only

COUPON

**A GREAT CHRISTMAS GIFT FOR SOMEONE YOU LOVE—OR FOR YOU**

Introducing the NEW, value-priced

**PFAFF TIPMATIC ANNIVERSARY EDITION**

Christmas Value Price:

\$995.00

1007



It's here. A special limited edition sewing machine with PFAFF's exclusive, built-in Dual Feed. This special walking foot eliminates fabric slippage, makes it simple to match plaids, patterns and stripes and lets you sew up to 12 fabric layers with ease.

You also get 54 stitch programs with simple pushbutton stitch selection, automatic needle threading and more.

125 PFAFF 1982-1987

**SAVE NOW! COME IN TODAY!**

OTHER SPECIALLY PRICED PFAFFS ON SALE

**BILL BUSH SEW-N-VAC**

4518 Kirkwood Hwy. - 998-4851

(Parklynn Shopping Center)



Service Dept.  
Phone #994-4252

Look For Us  
In The  
Donnelley Directory



It takes Delawareness to help your small business expand profitably. And that's exactly the help you get with Success Line, from Delaware's Bank.

Success Line is a revolving line of credit with which you can pay your bills, build up your inventory - or use in any way that will help your business grow.

Borrow up to \$50,000. And because your credit is pre-approved, it eliminates

trips to the bank every time you need to borrow.

If you would like to know more about the alternative to conventional business loans, call your nearest Bank of Delaware branch office.

We can't guarantee your business success. But we can offer the kind of pure Delawareness that will point you in the right direction.

**BANK OF DELAWARE**

Delaware's Bank

Member FDIC

Video: Allegiance - Honors By Video

An Equal Opportunity Lender



## NEWS

# Station renovation boosted

Efforts to renovate the Newark train station have gotten a boost with the discovery of an April, 1878 issue of Railroad Gazette.

The magazine includes a detailed article on the appearance of the train station shortly after construction in 1877.

The magazine was unearthed by John Milner Associates of West Chester, Pa., architects for the restoration project.

Newark planning director, Roy Lopata was pleased with the discovery. "It's the kind of thing a good historic preservation architect should do."

The article describes Newark

then as a town of 3,000 inhabitants with a "very commodious and neatly designed station."

The Newark station was a regular stop on the Pennsylvania Railroad.

The article also gives detailed front and end elevations, floor plans and specifications.

Although this information is very important to the renovation, Lopata said they won't be able to use all the information in the article.

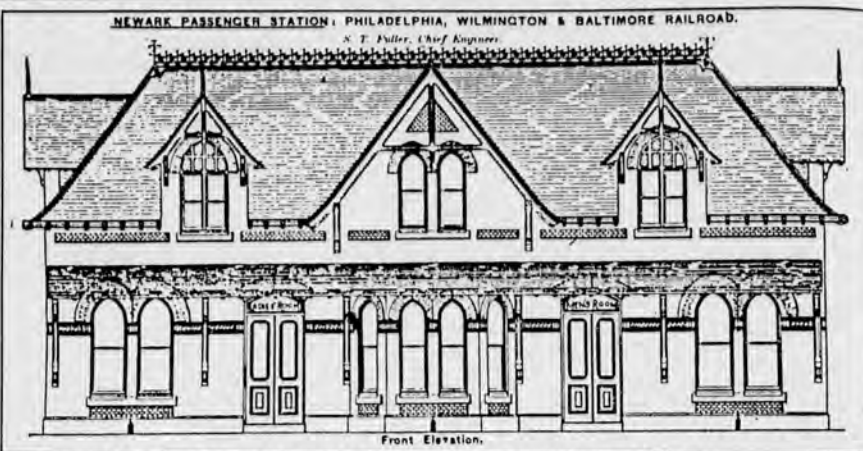
"We don't have the funds to (exactly) reproduce the building. It's not going to look like that when we're done."

Lopata said they would like to

restore the building to its original condition someday if the funds became available.

Last June, the deed for the station was transferred from AMTRAK to the city. The city was able to purchase the building with partial funding from the Bicentennial Improvement Fund. A Delaware Transportation Authority Grant is helping fund the renovation.

Construction of the station was based on a design by noted railroad architect and engineer, S.J. Fuller. The building is now on the U.S. Department of the Interior's National Register of Historic Places.



The Newark train station, as pictured in an 1878 issue of The Railroad Gazette.

# DOWNTOWN COUNTDOWN

**LEE'S**  
*Oriental*

**1/2 PRICE SALE ON**

- CLOISSONE BIRDS AND ANIMALS
- FRESH WATER PEARLS
- HANDMADE LARGE STERLING SILVER EARRINGS

**WE SPECIALIZE IN:**

- Hand Painted Silk Screens
- Soapstone In-Laid Nesting Tables and Chests
- Rosewood Jewelry Boxes and Flower Stands
- Mother of Pearl In-Laid Plaques
- Genuine Stone Jewelry and much more!

52 East Main Street  
Newark

**368-5941**



We wish you the  
**MERRIEST!**  
AT  
**ABBOTT'S**  
**SHOE REPAIR**  
Serving The Newark Area For 30 Years

- Work Boots
- Dress Boots
- Hiking Boots
- Men's & Women's Shoes & Boots

- Shoe & Leather Repair
- Frye
- Wolverine
- Armadillos
- Redwing

**368-8813**

92 E. MAIN ST. NEWARK  
HOURS: Mon., Tues., Thurs., Sat., 9-5:30  
Wed. & Fri., Till 9



# Christmas is a SNAP! at NEWARK CAMERA

All of the Carousel projectors shown have...

- Slide tray removal with power off.
- Built-in handle.
- Rear lamp-module removal.
- Illuminated control panel.
- Reading light.
- Permanently attached power cord with storage in base.



Model 4400

- Remote focusing in same control unit as forward/reverse change.
- Hi-Lo lamp switch.
- Remote accessory outlet.
- Remote control.

Our Reg. \$255

**XMAS SPECIAL**

**\$219<sup>95</sup>**

- Long-life lamp.
- Increased elevation with quick-release elevating foot.
- Dark-screen shutter latch that automatically masks the light to darken the screen when there is no slide being projected.

PLUS, the added features listed below.



Model 4600

- Automatic focusing. Focus first slide, then the projector automatically focuses all other slides in the same type of mount.
- Remote accessory outlet.
- Remote control.
- Hi-Lo lamp switch.

Our Reg. \$300

**XMAS SPECIAL**

**\$269<sup>95</sup>**



Model 5600

- Slide-Scan built-in screen.
- Automatic focusing. Focus first slide, then the projector automatically focuses all other slides in the same type of mount.
- Dust cover.
- Variable-time automatic slide change with continuous settings between 3 and 22 seconds.
- Roomlight outlet.
- Spare lamp storage compartment.
- Remote focusing.
- Remote accessory outlet.
- Remote control.
- Hi-Lo lamp switch.

Our Reg. \$465

**XMAS SPECIAL**

**\$389<sup>95</sup>**

Carousel projectors offer dependable performance, rugged construction, and easy handling. All of these Carousel projectors, except the Model 4000, accept special presentation accessories for adding taped narrative and music synchronized to slides, and for dual projector hookups.

**NEWARK CAMERA**  
63 E. MAIN ST., NEWARK

**(302) 368-3500**

OPEN:

Mon.-Sat. 9-5:30  
Wed. & Fri. 9-7

MasterCard • Visa • Discover • WFSF



**630-73**

**ONLY \$895. SONY**

Portable 8MM Video Camera/Recorder  
**Video 8® Handycam™**

- ☐ WORLDWIDE 8MM VIDEO STANDARD
- ☐ COMPACT CAMCORDER WITH BUILT-IN, FULL-FUNCTION PLAYBACK DECK
- ☐ ELECTRONICALLY COMPATIBLE WITH ALL 1/2" VIDEO SYSTEMS
- ☐ 2 HOUR RECORDING ON ONE 8MM CASSETTE (P6-120)
- ☐ AUTO FOCUS WITH 12-30mm MACRO ZOOM LENS
- ☐ ELECTRONIC VIEWFINDER FOR ACCURATE FRAMING
- ☐ SOLID-STATE, RGB PROCESS 2/3" CCD IMAGE SENSOR
- ☐ LINEAR AUTO WHITE BALANCE FOR CONTINUOUS ADJUSTMENT
- ☐ AFM RECORDING FOR SUPER HI-FI SOUND
- ☐ FLYING ERASE HEAD & EDIT SWITCH FOR SUPERIOR DUBBING/EDITING

**JUST IN ...SONY V-5 CAMERA/RECORDER \$1199<sup>95</sup> PLUS FREE CASE**



## NEWS

## 'Salute to Newark' celebrates history

The triumphs and the tragedies of Newark's past were on display last week during the "Salute to Newark" exhibit at the Municipal Building.

The exhibit, put together by the city Department of Parks and Recreation, was in celebration of Delaware's 200th birthday.

"We wanted to do something that was exclusive to Newark," said Stacy Diehl, city cultural arts coordinator.

Diehl collected artifacts over the past year for the exhibit, which included a World War I uniform, original minutes from a city council meeting in the late 1800s and personal items from residents.

One item in the exhibit was from a 78-year-old resident whose father was a city employee at the turn of the century. The woman's grandson is now a city employee. A picture of her father, standing by a city truck in the early 1900s, was placed next to a similar picture

taken recently of her grandson.

Newspaper clippings about the city police department and volunteer fire crews were on display. Information on the fire crews included a 1963 brochure, when Aetna Hose, Hook and Ladder celebrated its 75th anniversary. Next year, the company will celebrate 100 years as a volunteer department.

Details on a 1977 explosion at the Main Street McDonald's restaurant in Newark were on display. The restaurant was one of the company's original buildings and was to be placed on the National Register of Historic Places when the explosion occurred. The cause of the explosion was not determined.

Many of the visitors to the exhibit were longtime Newarkers and knew a lot about the articles on display.

"They walk up and can tell you what happened," said Diehl.

Diehl called the exhibit a hodge-podge of artifacts, "a smattering of things that meant something to somebody."



Historic clippings, photographs and copies of The Newark Post on display during the "Salute to Newark."

**FOR GREAT SELECTION & VALUE PLUS PERSONAL ATTENTION, SHOP NEWARK FOR THE HOLIDAYS!**

**DO YOUR SANTA CLAUSING at**

**Grassroots**  
handcrafts

Every Weekday Evening Until 9:00 PM  
Sunday 12-5

46 E. MAIN ST.  
NEWARK  
453-9751

90 ORANGE ST.  
WILMINGTON  
10:30-3:30, Sat. 11-3

**ASHBY'S** 19 Haines St. Newark  
(302) 737-5379  
**OYSTER HOUSE**

**SUNDAY NIGHT**  
3 PM-10 PM

**ALL YOU CAN EAT**  
**TOP SIRLOIN STEAK**

**\$12.95** Includes: Soup  
And Salad Bar Buffet  
And Baked Potato

**FITNESS FOR CHRISTMAS**

A Perfect Gift Idea!

**GIFT CERTIFICATES**

starting as low as  
**\$19.00**

• **AEROBICS**  
Beginner to Advanced  
Low Impact-High Energy

• **KENPO KARATE**  
For Kids & Adults

**NEWARK FITNESS CENTER**  
**NEWARK SHOPPING CENTER**  
**366-7584**

## Knight's Clocks

229 E. CLEVELAND AVE., NEWARK (Across from Rockhill)  
(302) 737-4400 LAYAWAY NOW FOR XMAS!  
"We Service What We Sell"

SAVE 35-50% ON ALL GRANDFATHER CLOCKS



CHERRY CASE  
BEVELED GLASS  
TRIPLE CHIME  
REG. \$1795.  
**\$999**



OAK CASE WITH  
BEVELED GLASS  
TRIPLE CHIME  
Reg. \$1499.  
**\$799.**



CHERRY CASE  
WITH BEVELED  
GLASS,  
MOON DIAL,  
WESTMINSTER  
CHIME  
Reg. \$1329.  
**\$699.**



CHERRY CASE,  
CABLE WOUND,  
TRIPLE CHIME,  
NINE TUBULAR BELL  
STRIKE CHIME,  
BEVELED GLASS  
Reg. \$3499.  
**\$1999.**



CHERRY CASE  
TRIPLE CHIMES  
LOTS OF  
BEVELED  
GLASS  
Reg. \$2150.  
**\$1299.**



OAK WITH WESTMINSTER  
CHIME  
**\$199.95**



THE LEXINGTON  
CHERRY  
BORDEAUX  
WESTMINSTER  
CHIME  
**\$249.**

M.C. • VISA • M.C. • W.F.S. • LAYAWAY

• SETH THOMAS • SLIGH CLOCKS • HOWARD MILLER • RIDGEWAY • BALDWIN • BLACK FOREST CUCKOOS • SETH THOMAS

make this Christmas  
a **MINSTERS** Christmas  
with Gifts for Everyone on

Your list...

Diamond  
elegance —  
the  
Christmas gift  
supreme.



Newark Shopping Center  
Newark, Delaware 19711  
302-737-5947

**20% off!**  
Jewelers since 1895

## DECK YOUR HALLS

everything you need for....

### ENTERTAINING

Plastic Glasses  
Serving Trays, Paper  
Plates & Napkins,  
Red & Green Cutlery  
Dozens of Holiday  
Prints

### DECORATING

Wreaths,  
Garlands, Tree  
Ornaments, Balloons,  
Center Pieces  
Candles, Gift Items,  
Stuffed Toys

### GIFT WRAPPING

Wrapping Papers,  
Ribbons, Gift Bags,  
Gift Boxes,  
Christmas Cards

The largest selection  
available at discount  
prices.

Full Line of New Year's  
Supplies

**136 ELKTON RD., NEWARK**  
**368-1440**

HOURS: Mon.-Tues. 9-5; Wed., Thurs. & Fri. 9-8;  
Sat. 9-4; Call For Extended Holiday Hours.  
VISIT OUR OTHER LOCATIONS • CONCORD AVE. &  
BROOM ST., WILM. & MARKET ST. MALL

**Fulton**  
**Paper**  
**Company**

with **FULTON PAPER**

*The*  
**Hairitage**

220 E. DELAWARE AVE., NEWARK  
366-0397 Tues.-Fri. 10-5:30, Wed. Eves.; Sat. 10-2

**Get Ready For The Holidays!**

**PERM SPECIAL \$5.00 OFF** REG. \$38.45  
TIL 12-31-87 When You Mention This Ad!

Visit Our New  
**GIFT SHOP**

Featuring handmade crafts, silk  
arrangements, candles,  
Christmas decorations and much  
more.

**FREE**  
**REVLON NAIL POLISH**  
With Manicure  
Now Thru 12/31/87

**We Make You Stand Out In A Crowd**





## NEWS

## State offers improvements to Smalley's Dam Road

by Cathy Thomas

Traffic conditions along Smalley's Dam Road in Christiana may improve somewhat under plans discussed last week during a meeting of residents and Delaware Department of Transportation officials.

Those plans, however, will not likely satisfy all the demands of residents who have been protesting the hazards of the road.

"We have individually and collectively tried to do something about it (Smalley's Dam Road) over the years and fell completely on deaf ears," said Dorothy Bolen, a resident of the Lexington Green Apartments. "I don't know why the state highway department officials have chosen to ignore this issue until now."

Residents began protesting poor road conditions several weeks ago following an accident in which a 10-year-old boy was seriously injured as he tried to cross Smalley's Dam Road at Freedom Road. Several other children and adults have been injured trying to get to a shopping center across the road. Two years ago, a man was killed when he was struck by a car.

"The road out there is exactly the same as the day I was born," said Bolen, who has lived on the road most of her life. "We simply asked from the beginning that there would be some kind of road out there that would permit the traffic."

State highway officials believe that construction of Newtown Road will take much of the traffic off Smalley's Dam Road. Some motorists now use Smalley's Dam Road as a connector between Del. 7 and Old Baltimore Pike. Newtown Road will connect Smalley's Dam Road and Del. 7.

During the meeting, highway officials agreed to paint crosswalks on Smalley's Dam Road at Freedom Road. Management of the Lexington

Apartments will install a chain link fence running the length of the property to encourage residents to use the crosswalk.

Residents have also asked highway officials to build shoulders on the road and flatten out hills that block vision. Because Smalley's Dam Road is low on the highway department priority list, costly improvements such as those are not likely.

A lack of police enforcement to stop speeders has also been a

complaint of residents. But Debbie Alexander, manager of the Lexington Apartments, concedes that the road is so narrow, there is no place for police to stop anyone for speeding.

Completion of Newtown Road is expected next summer. At that time, a cul-de-sac will be built on Smalley's Dam Road near Del. 7. That will eliminate connector traffic from Old Baltimore Pike. Highway officials are hoping they will instead use Newtown Road.



Mary Baker and Peter Wells look over Christmas basket items.

## Newark Area Welfare Committee accepts donations for holiday

The Newark Area Welfare Committee is preparing for its annual Christmas basket program, in which baskets of food will be packaged and delivered to about 200 needy families in Greater Newark.

The Committee will be assisted this year by local children, who will provide the non-perishable food items which make up a large part of the contents of the baskets.

The children are members of various community organizations, including Girl Scout troops, Cub Scout packs and

church congregations, according to Peter Wells, chairman of the program, and Mary Baker, co-chairman.

In addition to the canned goods, cake mixes and cereals donated by the children, the Committee will purchase turkeys, chickens, fruit, potatoes, bread and butter to round out a festive holiday meal.

Referrals come from all around Newark, and recipients may be families of seven or single senior citizens.

In providing food baskets, the Committee tries to cater to the

needs of the family or individual, and includes breakfast and dessert items as well as meat and vegetables.

Baskets will be prepared the week of Dec. 20 for delivery Wednesday, Dec. 23. Persons who would be interested in helping prepare the baskets should contact Wells at 737-4711.

Money for purchasing the fresh food stuffs is also needed. Donations, made out to the Committee and marked "Christmas Basket Program," should be sent to: NAWC, P.O. Box 390, Newark, DE 19715-0390.

## WNRK collects toys for kids

The second annual Christmas Toy Collection for Foster Children, sponsored by Newark radio station WNRK-AM in conjunction with the New Castle County Foster Parent Association and Christiana Mall, is under way.

Donations of new toys may be dropped off at WNRK or at the

special gift box in Christiana Mall.

To promote interest in foster parenting, WNRK will devote its Dec. 11 "Friday Morning Feedback" program to the issue. On the air from 9-10 a.m. will be the state foster care coordinator and representatives of the Foster Parent Association.

Also, WNRK will broadcast live from the Mall from 11 a.m. to 2 p.m. Dec. 9, 12 and 17.

Toys collected during the campaign will be presented to the Foster Parent Association at its Christmas party Saturday, Dec. 19.

## Edward's Fashions

The Largest Fine Men's Clothing Store in Cecil County

301-398-7007



THE REGULAR • THE SMALL • THE BIG & TALL  
TUXEDO RENTALS • EXPERT ALTERATIONS



As seen in the December issue of Gentleman's Quarterly, where EDWARD'S FASHIONS is listed as one of only 12 Maryland stores that carry J.J. Cochran Clothing.

J.J. COCHRAN

#9563  
Heading out for awhile? Make sure you take along a J.J. Cochran fancy marl cotton crew neck sweater for those cold winter nights.



Men's  
Young Men's  
Big & Tall

### \$STORE WIDE SALE

20 to 50% OFF SAVE ON

SUITS SWEATERS  
SPORT COATS SHIRTS  
SLACKS SHOES

WE WON'T HOLD ANYTHING BACK FOR A PRICE!

A SMALL DEPOSIT WILL LAY-AWAY THAT SPECIAL GIFT FOR CHRISTMAS

BRING THIS AD AND  
20% OFF Will Be  
Deducted From The  
ALREADY REDUCED SALE PRICES  
On Any One Item You Select!

\*This Week Only \*Excluding Fragrances & Price Items



116 W. Main St.  
Downtown ELKTON, MD  
Conveniently Located Between  
Hospital & Courthouse

SPECIAL EVENING HOURS  
FOR THE HOLIDAYS  
Open M-F 9-8 PM  
Sat. 9-7 PM  
SUNDAY 12-4 PM

SHOP DURING OUR EVENING &  
SUNDAY HOURS & RECEIVE AN  
ADDITIONAL 5% OFF YOUR PURCHASE!

Southern States

## WARMTH WITHOUT WORRY



Southern States  
heating oil  
doesn't gel when  
temperatures fall.

I may worry about stocks going down and taxes going up, kids moving out and crabgrass moving in, gaining more weight and losing more hair. But I won't worry about staying warm this winter because Southern States has a Home Comfort Plan. They deliver heating oil to our tank, keep track of how much we use, and when the tank is low, they deliver again. Plus they have complete burner service. And a Monthly Budget Plan spreads my payments over ten months, with no finance charges. All I have to remember is to turn on the furnace. Here's the Southern States dealer who helps me out. Stop by or give him a call and you, too, can get a warm feeling all over.

NEWARK, DE  
800 Ogletown Rd.  
(302) 738-0330  
M-F 8:00-6:00  
Sat. 8:00-4:00  
Sun. 11:00-5:00

PETROLEUM SERVICES



Southern States

## Country Christmas Sale

Sale Prices  
Good Through  
12/24/87

### Liberty Brown Duck Coveralls

Insulated. Knee-length leg zippers. Corduroy collar. 2-way zip front. Water repellent. 100% cotton. Machine washable. Storm cuffs.



our sale price ..... **39<sup>95</sup>**  
mfr. mail-in rebate ..... - 5.00  
final cost ..... **34.95**  
Sug. Reg. 49.95

### Old Fashioned Raw Shelled Peanuts

3 lbs. of fresh raw shelled peanuts enclosed in an old-time burlap sack. Complete with roasting instructions and recipes just in time for a Country Christmas.



**4<sup>99</sup>**

### Duck Shoes

Bright rubber shell. 3 eyelets. tie oxford. Golden tan glove leather.

Men's Brown. Sug. Reg. 28.95  
Ladies' Navy. Sug. Reg. 27.95



**18<sup>99</sup>**

### Pocket Knife

No. X912. Made in U.S.A. by American craftsmen.



**3<sup>99</sup>**  
Sug. Reg. 6.79

### Poinsettias



**5<sup>99</sup>**

### Gift Certificates Available

### Live Christmas Trees

Spruce and White Pine.



**24<sup>95</sup>-39<sup>95</sup>**

800 OGLETOWN RD., NEWARK, DE.  
**302-738-0330**

FARM • HOME • GARDEN  
"Since 1923"



## Peace vital to Central America

by Cathy Thomas

Peace in Central America is vital to the development of the region. The Costa Rican Ambassador to the United States, Guido Fernandez, carried that message with him during a visit to Newark last week.

While at the University of Delaware, Fernandez spoke on the possibility for peace in Central America following the establishment of a regional peace plan. Ceasefire talks have been underway in Nicaragua as a result of the plan, which was signed by the leaders of five Central American countries, including Costa Rica.

Fernandez said the problems in Central America are a contest between the different types of government rule. As a democracy, Costa Rica is an exception in Central America.

"We have to prove that our system works," said Fernandez. "We have to restore peace. We would very much like to democratize Nicaragua."

Costa Rica is facing difficulties now, according to Fernandez. There are few natural resources and the country is facing one of the highest per-capita national debts. However, some

progress has been made in raising literacy rates and attracting foreign investment.

"Unless we have peace in the area, we won't be able to attract more investment," said Fernandez.

Fernandez believes that much of Costa Rica's progress can be attributed to the fact that they have no army.

"We decided to abolish the army in 1949," said Fernandez. "If we reduce the armies, we will better off."

An army costs about ten percent of a Central American country's gross national product. Fernandez said those funds can be reallocated to enhance housing, for instance.

Costa Rica has taken a role of encouraging other Central American countries to abolish their armies. "Armies are not necessary to defend the national interest of the country."

Fernandez criticized United States aid to the Contras in Nicaragua.

"I don't think the Contras are the solution to the problem. The Contras are the problem. The aid to the Contras should be ceased."

A journalist, Fernandez served as media advisor to Oscar Arias, Costa Rican president and recipient of the 1987 Nobel Peace Prize.

## County residency rule 'must be enforced'

New Castle County's residency requirement must be enforced according to Democratic Councilman Ron Aiello.

Under the requirement, employees, hired after 1979, must reside within county limits. County Council recently approved a resolution, sponsored by Aiello, calling for stricter enforcement of the requirement.

Aiello says there are some employees in the county, hired after 1979, that are not complying with the residency requirement.

"If you work for the county, you should live in the county," said Aiello. "We have to take care of the people in the county."

Those employees who reside outside county limits do not pay New Castle County taxes.

Aiello says the county administration must make sure employees comply with the requirement.

"I think the administration has to follow up on the books. If

we let these four or five go, why shouldn't the rest be able to live out of the county?"

Aiello had earlier sponsored an ordinance requiring all employees to reside in the county. But he tabled that ordinance in favor of the resolution after those employees, hired before 1979, expressed their opposition.

Aiello quickly disagrees with the argument that finding prospective employees in the county could be difficult, considering the low unemployment rate here.

"The low unemployment rate is only in specific areas (of employment). I have people calling me every day that want jobs."

Aiello says those employees in violation of the current residency ordinance must comply or possibly face unemployment.

If there is not compliance with the current ordinance, Aiello says he will pursue the tabled ordinance requiring all county employees to reside in the county.

## HOLIDAY Gift Guide

Ready for you NOW at

**Cecil Furniture**

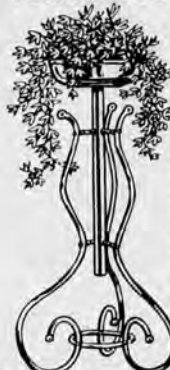
& Waterbed Sleep Shop of Elkton  
"Where Santa Shops!"

SPECIAL SAVINGS  
ON VERY NICE  
GIFTS...FOR  
EVERYONE ON  
YOUR LIST...  
AND, YOU, TOO!



Hundreds of Specials, in stock now: Ready for delivery in time for Christmas...

### 1/2 OFF SALE Victorian Planter



This beautifully sculptured plant stand is an authentic reproduction of those which graced our homes at the Turn of the Century. This magnificent white enameled steel planter with gold color ornamentation is perfect for home or office. Easy to assemble. 37" tall.

(Reg. \$39.95)

only  
**\$19.**

### Oak Blanket, Towel & Bedspread Rack



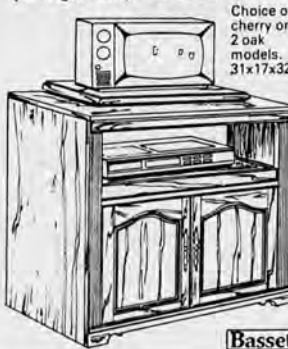
only  
**\$58.**

(Reg. \$99.95)

Handsome, SOLID OAK multi-purpose rack holds your bedspreads, extra blankets in the bedroom, or towels in the bath. Sturdy construction. Easy to assemble. 24" x 17" x 30" tall.

IN STOCK NOW: QUANTITIES LIMITED!

This swivel TV/VCR unit is priced just right: only **\$249.**



Choice of cherry or 2 oak models. 31x17x32" H.

Bassett

This all-wood dinette set is one great gift you'll all enjoy for years! **\$298.** 5-PC. SET

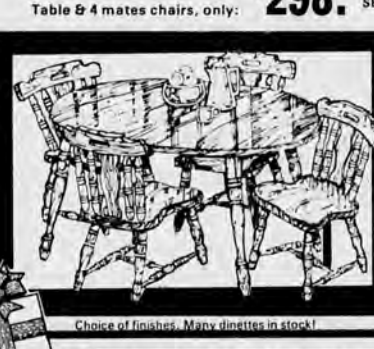


Table & 4 mates chairs, only: \$298.

Choice of finishes. Many dinettes in stock!

This cabinet holds it all: TV, VCR, Stereo, Tapes, Records and more!



Give the gift that will keep on giving: FURNITURE.

SAVE \$300.

The total system

**\$599.**

Reg. \$899.95  
This week only

Your TV, VCR, stereo components and records can be at your fingertips when you're ready to use them. But when the show's over, they're conveniently and safely out of sight. 51x22x52" H. unit has pull-out shelves and TV swivel doors, drop lid and rolltop compartments. Lustrous cherry finish.

Oak finish also available. FREE DELIVERY INCLUDED!

THESE SLEEP SOFAS COME WITH INNERSPRING MATTRESSES!

YOUR CHOICE:

**\$498.** ea.

Reg. to \$799.95.

Contemporary Herculon stripe  
• Pub Back in Pin Dot Velvet  
• Contemporary in Brown Velvet

FREE DELIVERY INCLUDED.



SPECIAL PURCHASE

We have a big selection of sleep sofas in stock now!



Matching loveseats & chairs available.

**-229 S. Bridge St. ELKTON, MD.-**

(on Md. Rte. 213, just 1/8 mile south of Rt. 40, near the Big Elk Mall - easy to find!)

call us! (302) 366-8621 Toll-free from Del. • (301) 398-3401 in Md.

NOW OPEN WEEKNIGHTS 'TIL 9:00 PM (Mon.-Fri.)

Saturday 10:00 AM-5:00 PM Shop Sunday 11:00 AM-4:00 PM • FREE PARKING!

NO MD. SALES TAX WHEN WE DELIVER TO DELAWARE RESIDENTS!

• FREE DELIVERY with your purchase \$499. or more, within 30 miles of Elkton. Note: sale prices do not apply to prior purchases. SALE ENDS DEC. 24, 1987. Credit terms arranged for qualified buyers. Your satisfaction always guaranteed.



welcome!

## MERRY SAVINGS FROM SINGER

'TIS THE SEASON FOR LOW SINGER\* PRICES!

BRAND-NEW!

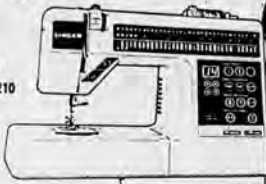
ELECTRONIC!

**\$749.95**

REG. \$1399.99

Micro-Computer Free Arm Model 2210

- Over 100 built-in stitches construction to decorative
- Built-in electronic buttonholer
- Touch-sensitive panels eliminate buttons, dials
- Sews numbers, letters, words



The Debutante™ Machine

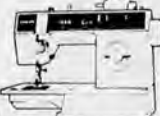
Model 6212

- 5 popular stitches • Built-in buttonholer • Drop-in bobbin
- Adjusts to various fabric thicknesses • Free arm for sewing sleeves • Built-in carrying handle

SALE

**\$189.95**

REG. \$349.99



The Limited Edition

Machine Model 6230

- 10 popular stitches including stretch overedge and blind hem
- Exclusive six-second threading
- Oak for easy stitch selection
- Convenient wind-in-place bobbin • Automatic tension
- Built-in buttonholer • Handy free-arm • Built-in storage area and carrying handle



**\$339.95**

REG. \$799.99

\$25.00 deposit holds your purchase for Christmas Layaway

THE SEWING MACHINE DOCTOR

HOWARD DENIGHT  
Formerly Singer Store Manager at Newark Shopping Center with 35 years Singer Experience  
MILLCREEK SHOPPING CENTER  
KIRKWOOD HWY. • WILMINGTON, DE

**998-6311**

MON. - TUES. 9:00 A.M. TO 5 P.M.  
WED. & FRI. 9:30 A.M. TO 9 P.M.  
VISA/MC/CHS/INSTANT CREDIT



SINGER  
AUTHORIZED DEALER  
A Division of the Singer Company

**Cecil Furniture**  
& WATERBED SLEEP SHOP OF ELKTON!

**-229 S. Bridge St. ELKTON, MD.-**

(on Md. Rte. 213, just 1/8 mile south of Rt. 40, near the Big Elk Mall - easy to find!)

call us! (302) 366-8621 Toll-free from Del. • (301) 398-3401 in Md.

NOW OPEN WEEKNIGHTS 'TIL 9:00 PM (Mon.-Fri.)

Saturday 10:00 AM-5:00 PM Shop Sunday 11:00 AM-4:00 PM • FREE PARKING!

NO MD. SALES TAX WHEN WE DELIVER TO DELAWARE RESIDENTS!

• FREE DELIVERY with your purchase \$499. or more, within 30 miles of Elkton. Note: sale prices do not apply to prior purchases. SALE ENDS DEC. 24, 1987. Credit terms arranged for qualified buyers. Your satisfaction always guaranteed.



## NEWS

## NEWS CALENDAR

• "The Political Thought of John Dickinson," a program by Forrest McDonald of the University of Alabama, will be presented at 7:30 p.m. Wednesday, Dec. 9 in Clayton Hall on the University of Delaware's north campus. McDonald will examine Dickinson's influence on the writing and ratification of the Constitution. The lecture is sponsored by the Delaware Humanities Forum, the University of Delaware History Department and the Friends of John Dickinson Mansion. It is free and open to the public.

• The Newark Business Association will sponsor holiday events downtown on Saturday, Dec. 12 and again Saturday, Dec. 19. Festivities, including free movies, fairy tales, prizes and popcorn for the kids, will be held 10:30 a.m. to 12:30 p.m. at Newark United Methodist Church, 69 E. Main St. After the movies, kids can inspect an Aetna Hose, Hook and Ladder Co. truck on Dec. 12 and hear the Boy Scout Troop 56 Brass Ensemble on Dec. 19.

• The Todd Estates-Newark Oaks Civic Association will meet at 7 p.m. Monday, Dec. 14 in the auditorium of Kirk Middle School. Special guest at the meeting will be State Rep. William A. Oberle Jr., R-Newark. During the meeting, the Association will give away two free turkeys.

• A Delaware Department of Insurance investigator will be on hand from 9 a.m. to noon Tuesday, Dec. 15 at the Newark

Municipal Building, 220 Elkton Rd. The investigator will be available to local insurance consumers to answer questions and help with claims or complaints.

• U.S. Senate candidate Sam Beard, a Democrat, will hold community meetings at 6 and 8 p.m. Tuesday, Dec. 15. The early meeting will be held in Elsmere Town Hall, and the later meeting will be held in Hanover Presbyterian Church, 18th and Baynard Blvd., Wilmington.

• Social Security Administration representatives will be on hand Thursday and Friday, Dec. 17 and 18 at New Castle Square Mall, Del. 273, to accept applications for Social Security numbers for area youths. Federal law requires that each dependent age five and older have a number for use on the 1987 tax return. Representatives will be available from 9:30 a.m. to 5 p.m. Bring proof of age, citizenship and identity. Original or certified documents are required.

• The Delaware Nicaragua Network meets at 7:30 p.m. the first and third Mondays of each month in New Ark United Church of Christ, 215 E. Delaware Ave. The meetings are held on the third floor of the education building, and are open to the public. The organization's aims include education about U.S. policies of intervention in Central America and a call for citizen action to change these policies. For details, call 368-4854.



Betty Shortlidge shows her needlepoint works Saturday during the city's annual We The People Craft Fair held at the University of Delaware's Daugherty Hall.

## Police plan lauded

The idea of Newark city police working closely with the University of Delaware security force is welcomed by Dr. Russel C. Jones, president of the University.

"I see a good working relationship between our security police and the Newark police," said Jones.

University and city officials are in early discussions of a proposed public safety facility which would be shared by university and city police, but the two departments would remain separated.

"My own judgment, at this point, is that the university should deal with what happens on our geography and the town has to deal with what happens on its geography," Jones said.

It has been suggested that the university should have some responsibility for students living off-campus, but Jones said he doesn't see how that could be done.

"I think collaboration with the Newark city police is the right way to get whatever problems are out there handled."

Whenever non-student problems end up on campus, Jones said university security must handle them.

Although the two police units must operate separately, Jones says bringing the two together in other ways makes a lot of sense.

## Special Kalmar Nyckel stamp to be issued

Special stamps to commemorate the landing of Swedish and Finnish settlers in the Delaware Valley in the 1600s will be issued March 29, 1988 by the governments of the United States, Sweden and Finland.

The issue will be marked during a special ceremony in Wilmington, according to Ruth Swanson Crossan of Newark, chairman of the Commemorative Stamp Committee.

Crossan said the because this marks the first time in philatelic history that three countries will issue a similar stamp the same day, the U.S. Postal Service predicts a large turnout for the ceremony.

The Swedish and Finnish stamps will incorporate a common design by Sweden's Goran Osterlund, who based his work on an illustration from a 1702 book which was the first Swedish publication about America.

It shows a European settlers negotiating with two Indians. To their left and right are maps of New Sweden and Sweden and Finland, and centered are pictures of the Kalmar Nyckel and Fogel Grip ships which carried the settlers to America.

The initial proposal for a stamp to mark the first settlement of New Sweden on the Delaware was sent to U.S. and Swedish stamp boards in June 1984 by Crossan.

Dr. Leonard Barchak, president of the American Finnish Society of the Delaware Valley, recommended the stamp to Finnish officials.

The local New Sweden stamp first day of issue ceremony is being sponsored by the Kalmar Nyckel Commemorative Committee and the Delaware Heritage Commission.

Invitations have been extended to representatives of the three countries, members of Swedish-Finnish-American societies in the Delaware Valley and the governors of Delaware, Pennsylvania and New Jersey.

Second day of issue ceremonies will be held March 30 in Gibbstown, N.J. and Philadelphia.

Official first day covers can be ordered now through the

Kalmar Nyckel Commemorative Committee. One will be in blue and gold with a design depicting the Kalmar Nyckel, and the other will depict Queen Christina during whose

reign New Sweden was founded.

The cachets will have one U.S. airmail stamp affixed and will be cancelled at Wilmington on March 29, 1988. To order, send a self-addressed stamped

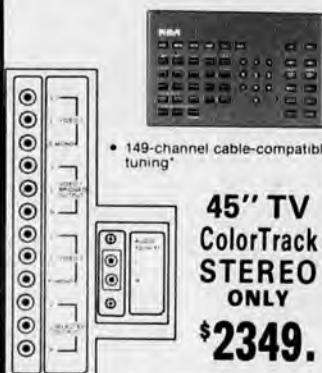
envelope and a check for \$2.50 for one cachet or \$4.50 for the set to: Kalmar Nyckel Commemorative Committee, Executive Office, Radisson Hotel, Wilmington, DE 19801.

## MARS -RE-OPENED NOW UNDER NEW MANAGEMENT

### RCA 50" diagonal ColorTrak Big-Screen Stereo Monitor-Receiver

- New brighter, sharper projection system
- Liquid-cooled glass-hybrid lens system
- RCA audio/video unified remote control
- MTS stereo sound system with 5 watts per channel

**TV Never Looked  
SO GOOD!**



- 149-channel cable-compatible tuning\*

**45" TV  
ColorTrak  
STEREO  
ONLY  
\$2349.**



**RCA** Model PPR475  
45" diagonal

### NEW COLORTRAK BIG SCREEN/STEREO

- 14-jack audio/video monitor panel
- 149-channel cable-compatible tuning\*
- On-screen time and channel number display

**50" Now Only  
\$2499.**

\*Check your cable company's compatibility requirements.  
†Rated from input panel sources only. 50 to 15,000 Hz, with no more than 1% THD into 8 ohms

### RCA "Pro Wonder"® VHS Camcorder

- 11.2 lens with 8.1 power zoom
- Infrared auto focus system
- Solid state MOS image sensor
- Excellent low light performance
- HQ (High Quality) VHS capability
- 3-way AC/DC versatility (with optional cord)
- Digital tape time remaining indicator
- On-screen time/date display
- High-speed electronic shutter



**RCA** Model CPR300  
VHS Camcorder

**NOW ONLY \$1299.**

or buy  
**40" TV  
ColorTrak  
STEREO  
For  
\$1999.**



**RCA** Model PPR475  
diagonal

Financing Arranged

**MARS**  
BIG ELK MALL (NEXT TO K MART)

Store hours: Tues., Thurs., Sat.  
10-5 Wed. & Fri. 10-9



**MUSIC AND  
ELECTRONICS**

-Bill Mars, Jr.  
Phone 398-3636

On Sale Now! Keep Your Loved Ones Warm This Christmas With A Vanguard Gas Heater

MR. KEEN PROPANE FLAME

## VANGUARD GAS ZONE HEATER

**VANGUARD GAS HEATER**

\*Zone heating saves \$ and provides comfort for six months per year.

\*1 degree reduction in main thermostat equals 3% savings.

\*In event of power failure you will always have heat with a Vanguard.

\*Vent free gas room heaters may be used in living areas, such as a living room, dining room, family room, den, or recreational areas.

**NOW 329.95 WITH FAN**

Reg. \$399.95

Model KV2500  
LP GAS  
VARIABLE OUTPUT  
25,000/15,000/5,000 BTU per hr.

**VANGUARD GAS HEATER**

\*With gas there's no fuel for you to store, lug around, or spill.

\*Engineered for optimum performance, choose between natural gas or LP models for maximum operating efficiency.

\*The single control is child resistant to provide peace of mind to caring adults, yet it's easy to operate.

\*American walnut woodgrain finish.

**NOW \$229.95 WITH FAN**

Reg. \$299.95

Model KV1500  
LP GAS  
VARIABLE OUTPUT  
15,000/10,000/5,000 BTU per hr.

**No Natural Gas Service NO PROBLEM**  
Take advantage of our **MONEY SAVING OFFER**

\*Professional installation and complete testing of your new heater.

\*Up to 25 feet of copper tubing as needed.

\*Delivery and installation of Keen compressed gas service to your heater.

\*Final check and complete test of entire gas installation.

\*47 gallons of LP Gas.

\*A loaned refillable gas storage container.

**ONLY \$129.95**

**KEEN PROPANE**

CALL TOLL FREE: 1-800-KEEN GAS

Main Plant: 4063 New Castle Ave. Wilmington, DE 19899 (302) 594-4545

Rt. 202 (1 1/2 Mi. So. of Rt. 1) Concordville, PA 19331 459-3525 or 3526

Orange St. & Eden Rd. Millville, NJ 08232 (609) 327-3077

101 Rogers Rd. Wilmington, DE (302) 594-4565 Mon.-Fri. 8-5, Sat. 8-12

125 N. New St. Dover, DE 19901 (302) 738-8814

Curtis Ave. & Rt. 40 Elkton, MD 21921 392-4554 or 4555

### FORCES FILE

#### Randolph

#### Navy training

Danny P. Randolph Jr. of Newark has graduated from the Great Lakes, Ill. Recruit Training Center.

He is currently assigned to Cryptologic Technician School in Pensacola, Fla.

Randolph is the son of Danny P. and Patricia Randolph of Toronto Circle, Newark. He is a recent graduate of Glasgow High School.







## Home care is possible for patients on ventilators

by Cathy Thomas

The problems in caring for those patients who need a machine to breathe were addressed last Wednesday during a seminar at the Christiana Hilton.

The seminar, hosted by the Delaware Society for Respiratory Care and Master Care of Newark, focused on the feasibility of home care for ventilator-dependent patients.

"The problem is that a lot of people in the medical community are not aware that home care is so readily available," said Barbara Garrison, Master Care public relations director. "It has gotten to the point where patients who need a machine to breathe can safely be transferred home."

Many medical professionals are not always certain how to facilitate a patient's move from the hospital to home, according to Garrison. Much of the seminar discussion centered on the benefits of home care versus hospital care.

However, Garrison said home care is not practical for all patients. "Some of their (the patient's) illnesses, or problems relating to an accident, are such that they need so much care, they can't be taken care of in the home."

The needs of the patient's family must also be considered when deciding whether home care is possible for the patient.

"There are times when, even though the patient may be capable of going home, the family is not capable of taking care of them," said Garrison.

Sometimes a family cannot make the emotional commitment needed to care for a patient. A family's financial resources must also be considered.

"For patients who can go home, if the family environment is right or the money is there, then some of those patients will recover eventually and not have to use a ventilator," said Garrison. "In those cases, they do very well in the home."

In most cases, home care is

much less costly than hospital care, according to Garrison.

A few years ago, the American Society for Respiratory Care conducted a study of 2,200 patients in 20 states. Their study revealed that \$500,000 was saved on each patient cared for in the home rather than in the hospital.

For hospitals, the idea of home care can be a mixed bag, according to Garrison. "At the same time their losing a patient and the revenues from that patient, they also make room for new patients."

If a ventilator patient can go home, it also frees up nurses at the hospital.

"Right now, there's a terrible nursing shortage all over the country. When a nurse has got to take care of a ventilator-dependent patient, it takes so much more of their time."

Insurance coverage on a ventilator patient can sometimes run out before care of the patient is complete. Garrison said in those cases, a hospital is obligated to keep a patient who has no method of paying for it.



The Deer Park facelift continues, with a sparkling new porch facing Main Street.

Photo/Robert Craig

**The Great Tastes Of The Holidays** starts at....

**NEW YORK Bagel and Bake**  
621 COLLEGE SQUARE SHOPPING CENTER  
453-1362

WE DO BAGEL TRAYS WITH DELICIOUS CREAM CHEESES OR HOMEMADE SALAD STUFFING. Also: PIES, CAKES & MORE

BAGEL OR COOKIE *Party Platters* AVAILABLE

**all the write stuff**  
• office supplies •  
681 COLLEGE SQUARE II

Rulers Pens & Pencils Markers Calculators Leather Notebooks Desk Sets Calendars And Much Much More!

(302) 731-8484

**20% OFF ALL RINGS**  
IN STOCK  
Hundreds To Choose From  
DIAMONDS BLUE TOPAZ RUBIES PEARLS AMETHYSTS BLACK ONYX SIGNETS for men & women

**COLLEGE SQUARE JEWELERS**  
COLLEGE SQUARE S.C.  
368-3380



21 COLORS OF BASIC SWEATS TO PLEASE THE HARDEST TO PLEASE

**CHAMPION® "Delaware" HOODS**  
Reverse Weave® - 90% Cotton, Heavyweight Warm-Up

**COWL NECK SWEATSHIRTS**  
Drawstring and Kangaroo Pouch

**CAPE COD JACKETS**  
100% Cotton Denim Drawstring Cowl Neck

Gift Certificates Available

**COLLEGE SQUARE SHOPPING CENTER**  
NEWARK, DE  
(302) 738-3442  
Open Late through Holidays

**UNIQUE GIFT IDEAS FROM**



**JUST SWEATS**

Personalized Shopping Assistance  
Free Gift Boxes and/or Wrapping  
Holiday Drawing (Details at Store)  
Surprise "Weekly" Holiday Specials

BASICS AVAILABLE IN YOUTH TO XXL & TALL SIZES

**APPLIQUE SWEATS by P.E. 101®**

Custom Designed Sweatshirts With Jean Pockets, Zippers, Leather and Lace  
Each Has A Look of It's Own

**PORTLAND PULLOVERS**

Comfortably Oversized Pullover of Chinella Fleece

**BASIC SWEATS BY HANES, SUNBELT & "JERZEES"**

Gift Certificates Available

**Merry Savings**  
at  
**COLLEGE SQUARE SHOPPING CENTER**

**A GREAT SELECTION of FINE GIFTS**

HAND-PAINTED PORCELAIN DOLLS GALWAY IRISH CRYSTAL

FREE ENGRAVING

DAVID WINTER COTTAGE COLLECTION

FREE GIFTSWARE

**COLLEGE SQUARE JEWELERS**  
COLLEGE SQ. S.C.  
368-3380

MAJOR CREDIT CARDS ACCEPTED

**Great Gifts in Store!**

**DELAWARE'S LARGEST SELECTION OF SALT AND FRESH WATER FISH!**

OVER 120 TANKS OF MARINE FISH ON DISPLAY

**PET STOP**

716-718 Ferry Cut-Off Route 9 Historic New Castle  
302-322-1876

**PROFESSIONAL DOG GROOMING**  
Most Breeds Call For An Appointment  
HOURS: Mon.-Sat. 10 to 9 Sun. 11 to 5  
Major Credit Cards & Checks Accepted

**COLLEGE SQUARE**  
Newark  
(Near Bradloes)  
302-454-FISH (3474)

**\$9.50 (REG. \$10.50)**

**Shampoo Cut & Blow Dry**

This Offer Valid Thru 12-20-87 With This Ad At:  
591 COLLEGE SQ. - 366-9032

**THE HAIR cutters**  
No Appointments Just Walk In. The Family Haircutters

\*Staffed only with experienced stylists \*Convenient locations to serve you better \*Most salons open Monday-Friday 9-9, Saturday 9-7 & Sunday 12-5.

**OVER 30 FLAVORS!**

**THE POPCORN CONNECTION**

**DECORATIVE TINS**

WE SHIP ANYWHERE IN THE U.S.

**COLLEGE SQUARE SHOPPING CENTER**  
733-0898  
MasterCard & Visa Accepted

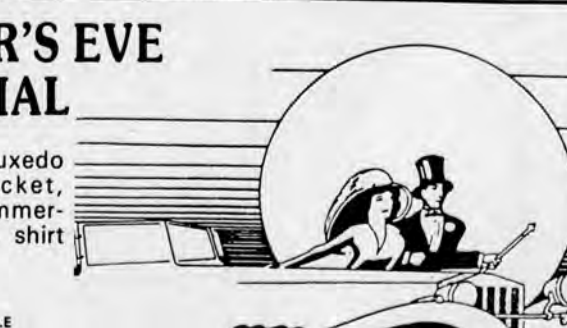
**Tuxedos Unlimited**

**NEW YEAR'S EVE SPECIAL**

Rent an After Six tuxedo complete with jacket, pants, shirt, tie, cummerbund, gloves, scarf, shirt studs, and cane.

**for only \$49.99**  
ALL 1987 STYLES AVAILABLE

**COLLEGE SQUARE SHOPPING CENTER**  
NEWARK, DE  
366-7559





## SCHOOLS

## Writing contest announced

National teachers' council seeks top-level nominees

The National Council of Teachers of English is sponsoring a nationwide Achievement Awards in Writing contest, and Delaware school districts have until Jan. 23, 1988 to nominate their top-level writing students.

Nominees in this contest must prepare two compositions to be judged. One will be a composition that the student considers his or her best work, and the other an impromptu composition written under teacher

supervision.

The theme of the impromptu composition will be kept secret until March, when it will be mailed to the supervising teacher in each district. Each school will conduct this part of the competition under controlled conditions.

Both samples of writing will be mailed to Delaware state coordinator Dr. Gary L. Houpt, state supervisor of English instruction, on or before April 21.

The contest is limited to

seniors in high schools. Each school may nominate one to eight competitors, depending on school enrollment.

Winners will be announced in October. Winners' names and addresses will be compiled in a booklet and mailed to 3,000 institutions of higher learning. The National Council of Teachers of English will recommend the winners for college admission and for financial assistance, if needed.

## Newark's Vagenas honored

Chip Vagenas, a Newark High School musician, has been selected to the McDonald's All-American Jazz Band.

Vagenas was one of 104 students from across the nation selected for the McDonald's All-American Marching Band, from which the 20-member jazz group was drawn.

"We are all very proud of Chip in that he is one of 20 from the entire United States to be

selected for the jazz band," said Lloyd Ross, Newark High band director. "Over 4,300 students were nominated for the McDonald's band."

As a member of the jazz group, Vagenas will perform in Washington, D.C. in April 1988, and at the Jerry Lewis Telethon in Las Vegas, Nev. in September 1988.

Vagenas, the son of Peter and Robin Vagenas of Newark, is a

member of the Newark High symphonic band and wind ensemble. He is also the drum line captain of the Yellowjacket Marching Band and, for the last four years, lead drummer in the Newark High Jazz Ensemble.

Ross said the Newark High percussion section earned highest honors at two band festivals, and added, "Chip was one of the key factors in that achievement."

## SCHOOL CALENDAR

• Newark High School seniors in the Jobs for Delaware Graduates program will appear on the "Dance Party USA" television program which will air at 5 p.m. Wednesday, Dec. 9. The program can be seen on cable channel 11.

• Newark High School will hold its 18th annual Elizabethan Christmas Rout Saturday and Sunday, Dec. 12-13 at the school. The Rout features period costumes, music and food, and commences at 6 p.m. each night. Tickets cost \$20 per person. Call 454-2326 for reservations.

• Red Lion Christian Academy will offer a special musical presentation, "Hark, the Herald Angel," at 7 p.m. Wednesday, Dec. 16 in Red Lion Evangelical Church, Del. 71, Bear.

• The Newark High School bands will present a winter concert at 8 p.m. Tuesday, Dec. 22. The free concert will be held in the school auditorium, and will feature performances by the wind ensemble, brass ensemble, jazz ensemble and symphonic band. The concert will be preceded by an awards banquet.

• The New Castle County Learning Center, 3301 Drummond Plaza, Newark, is accepting registration for area residents interested in obtaining GEDs or improving basic skills. Students seeking the GED can enroll in evening classes.

ing GEDs or improving basic skills. Students seeking the GED can enroll in evening classes.

**POOR JIMMY'S**  
FAMILY RESTAURANT

**WEEKLY DINING SPECIALS**  
All Items Include Our Famous Soup & Salad Bar

Tues. & Wed. 4:00-9:00 PM <b>COUNTRY BUFFET</b> \$5.95	Fri. & Sat. 4:00-9:30 PM <b>SEAFOOD &amp; MEAT BUFFET</b> \$10.95
Thursday 4:00-9:00 PM <b>PASTA NIGHT</b> Lasagna, Spaghetti, Etc. \$5.95 Take-Out Orders Available	Sunday 12 Noon-8:00 PM A Treat Beyond Belief <b>SUNDAY BUFFET</b> \$7.95 STILL ONLY

**SPECIAL CHRISTMAS WEEK LUNCHEON BUFFET**  
Tuesday, Wednesday & Thursday, December 22, 23 & 24  
A large selection of our regular buffet items plus our soup & salad bar.  
**ONLY \$6.95**

**CHILDREN UNDER 10 - 1/2 PRICE**  
U.S. Route 40 301-287-8141 North East, MD

**The NewArk**  
United Church of Christ

215 E. DELAWARE AVE., NEWARK  
(302) 737-4711 Rev. Peter A. Wells, Pastor  
**WORSHIP 9:30**  
11:00 ADULT & YOUTH EDUCATION  
NURSERY CARE AVAILABLE

"to love human beings is still the only thing worth living for...without that love, you really do not live."  
-Soren Kierkegaard

**THE Mill Store**  
FABRICS

**Winter Clearance Sale**  
SELECTED ITEMS REDUCED FROM OUR ALREADY LOW PRICES!

**99¢ yd. TABLE:**  
SELECTED INTERLOCKS, GABARDINES, LINEN-LOOK, DOUBLE-KNITS, T-SHIRT PUPONS & MORE!

**WOOL COATINGS**  
WERE \$6.99 YD.  
**SALE \$3.99 Yd.**

**MAN-MADE FURS**  
WERE UP TO \$9.99  
**SALE: \$2.99 to \$4.99 yd.**

**NEW STORE HOURS:**  
MONDAY: 9:30-5:00 FRIDAY: 9:30-9:00  
TUESDAY: 9:30-5:00 SATURDAY: 9:30-5:00  
WEDNESDAY: 9:30-9:00  
THURSDAY: 9:30-5:00 **CLOSED SUNDAY**

**FULLY STOCKED NOTIONS DEPARTMENT**

**COMPLETE LINES OF VOGUE, McCALL'S, BUTTERICK & SIMPLICITY PATTERNS**

**WE ACCEPT**  
MasterCard VISA  
PERSONAL CHECKS

800 CHESTER PIKE  
SHARON HILL, PA.  
215-534-2113

CROSSROADS SHOP. CTR.  
RT. 9 & RT. 295  
NEW CASTLE, DEL.  
(302) 654-5307

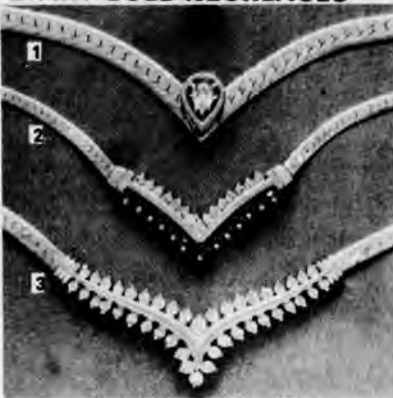
54TH & CITY LINE  
MERION, PA.  
(215) 664-0646

THE PROFESSIONALS **Colonial** JEWELERS

'tis the season for...

**EVERYTHING YOU'VE ALWAYS WANTED—  
ON SALE NOW!...LIKE NEVER BEFORE!**

**SAVE 50% ON DIAMOND & 14KT GOLD NECKLACES**



	REG.	SALE
1. 1/4 Pear Shaped Necklace on Herringbone Chain	\$1200	\$599
2. Sapphire and 1/4 ct. TW Diamond Necklace	\$800	\$399
3. 1 ct. TW Diamond Necklace	\$1800	\$899

**MARQUISE DIAMOND RINGS**



**40% OFF!**

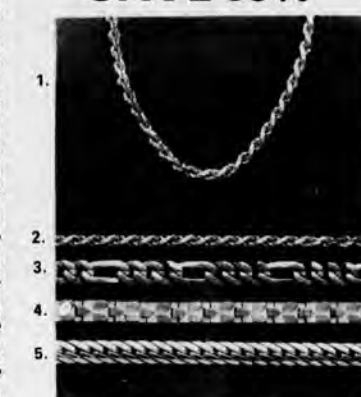
	REG.	SALE
1/4 ct. reg. \$695	\$695	\$425.00
1/3 ct. reg. \$895	\$895	\$525.00
1/2 ct. reg. \$1600	\$1600	\$960.00
3/4 ct. reg. \$2700	\$2700	\$1620.00
1 ct. reg. \$3995	\$3995	\$2395.00

**OPEN EVERY SUNDAY  
TILL CHRISTMAS 11 AM-5 PM  
EXPANDED WEEKLY HOURS  
9 AM-9 PM**

**SAVE 50% ON 14K DIAMOND STUD EARRINGS AND PENDANTS**

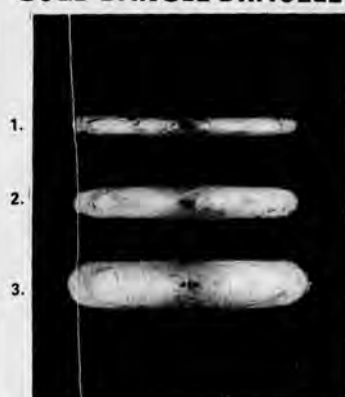
EARRINGS			PENDANT		
SIZE	LIST	SALE	SIZE	LIST	SALE
10 Pt. TW	\$135.00	\$67.50	.15 ct.	\$220.00	\$100.00
1/4 ct. TW	\$300.00	\$150.00	1/4 ct.	\$380.00	\$190.00
1/3 ct. TW	\$380.00	\$190.00	1/3 ct.	\$550.00	\$275.00
1/2 ct. TW	\$600.00	\$299.00	1/2 ct.	\$1000.00	\$499.00
3/4 ct. TW	\$1050.00	\$525.00	3/4 ct.	\$2000.00	\$999.00
1 ct. TW	\$1800.00	\$899.00	1.11 ct.	\$2900.00	\$1450.00

**MEN'S 14K CHAINS  
SAVE 50%**



	REG.	SALE
1. 18" Solid Diamond-Cut Rope	\$500	\$250
2. 8" Solid Diamond-Cut Rope	\$220	\$110
3. Heavy Figaro Chain		
8" Bracelet	\$460	\$230
18" Neck Chain	\$1000	\$499
4. 8" Nugget Bracelet	\$440	\$220
5. 8" Bold Herringbone	\$420	\$210

**60% OFF 14K YELLOW GOLD BANGLE BRACELETS**



	REG.	SALE
1. 3/16"	\$212.50	\$84.95
2. 4/16"	\$375.00	\$149.95
3. 7/16"	\$375.00	\$229.95

**OPEN TILL 9 P.M. EVERY NITE TILL CHRISTMAS!**

The gift of enduring elegance.  
**Seiko Quartz.**

**25% OFF**

EVERY SEIKO WATCH COMES WITH A 3 YR. WARRANTY

AUTHORIZED SEIKO DEALER



See Saturday's Cecil Whig For Sunday Specials!  
**FREE GIFT WRAPPING**  
ALSO IN-STORE CHARGE ACCOUNTS

**Colonial Jewelers**  
116 E. MAIN ST.  
ELKTON, MD  
398-3100

SMALL DEPOSIT WILL LAYAWAY SALE MERCHANDISE FOR CHRISTMAS

WHERE THERE'S A NEED, THERE'S A WAY.

**THE UNITED WAY**

©1986 UNITED WAY



Charles Blake (center) is congratulated after being named a recipient of the University of Delaware Merit Award. Presenting the award, conferred for Blake's work in establishing the University's Academy of Lifelong Learning, are J. Bruce Bredin (left), chairman of the board, and Dr. Russel C. Jones, president. Bredin called Blake "a man of vision for whom we at the University are proud."



## UNIVERSITY CALENDAR

• "Research Across the Life Span: Visions and Perspectives," a symposium on contemporary theories in life transitions and family dynamics, will be held Dec. 10-11 in the Perkins Student Center. The symposium, sponsored by the University Department of Individual and Family Studies, will featured guest lecturer Dr. Matti Gershenfeld of Temple University and the Couples Learning Center in Philadelphia.

The symposium will begin at 6 p.m. Thursday, Dec. 10 with a reception. A roundtable discussion by University graduate students will be held 7-9 p.m. The Friday, Dec. 11 session will begin at 8:30 a.m., followed by students' presentations at 9 a.m. Gershenfeld will speak at 10 a.m. Faculty and staff will report on current research related to family life during the afternoon session. For details on the conference, call Pat Balthis at 451-8776.

• Two ice shows will be performed Saturday, Dec. 12 at the University Ice Arena, South College Avenue. A matinee per-

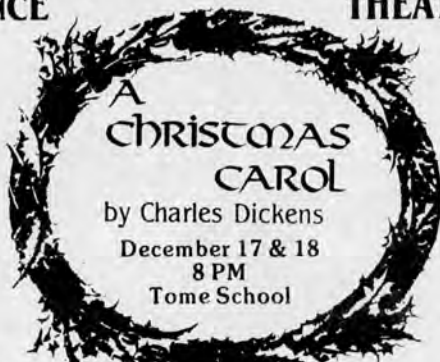
formance at 11 a.m. will feature parents and tots, members of community classes and skating students at all levels from beginners to nationally-ranked competitors. Tickets cost \$2 for adults and \$1 for children.

An evening ice show featuring individual skaters, pairs and dancers who have qualified for the U.S. Nationals will be held at 4:30 p.m. Tickets cost \$5 for adults, \$3 for children. Seating is limited and tickets will be sold on a first come, first served basis. Call 451-2788.

• The Delaware Singers, the state's professional chorus, will perform "A Choral Tapestry" at 8 p.m. Saturday, Dec. 12 in Mitchell Hall. The concert will feature selections by Mozart, Handel, Berger, Brahms, DiLasso, Copland and Gershwin. Call 451-2204 or 652-2977.

• Art works by three University masters candidates are being shown at the Delaware Theatre Company Gallery, 200 Water St., Wilmington, through Dec. 19.

The beauty of DANCE The excitement of THEATRE



The National Touring Production of



Nine performers • Dozens of Wonderful Characters from Dickens

Ticket Information & Reservations  
Box Office

Call (301) 885-2555

Children Age 6-12 - \$4.00, CCAC Members- \$6.75/\$6.50 (Seniors)  
General Admission- \$8/\$6.75 (Seniors)

## Glamour magazine seeks UD coeds

University of Delaware students are invited to participate in Glamour magazine's 1988 Top Ten College Women Competition.

Young women from colleges and universities throughout the country will compete in Glamour's search for ten outstanding students. A panel of Glamour editors will select the winners on the basis of their solid records of achievement in academic studies and in extracurricular activities on campus or in the community.

The 1988 Top Ten College Women will be featured in Glamour's August college issue. During May, June or July, the ten winners will receive an all-expenses-paid trip to New York City and will participate in meetings with professionals in their area of interest.

Anyone interested in entering the search should contact the University's Office of Information Services for more information. The deadline for submitting an application to Glamour is Dec. 15.

**GRAND OPENING MATTRESS SPECTACULAR!**

**SAVE 25% to 60% OFF** Dept. Store Sale Price

on all Sealy & Serta Mattresses & Box Springs including every Posturepedic and Perfect Sleeper

<b>SEALY FIRM PICK-UP SPECIAL</b> <b>TWIN</b> EA. PC. \$32* Full ea. pc. 50* Queen 2 pc. set 145	<b>SEALY DELUXE - SUPER FIRM LUXURY QUILT TOP</b> <b>TWIN</b> EA. PC. \$74* Full ea. pc. 94* Queen 2 pc. set 229 King 3 pc. set 299	<b>SEALY ORTHO-ULTRA FIRM 15 yr. WARRANTY</b> <b>TWIN</b> EA. PC. \$87* Full ea. pc. 134* Queen 2 pc. set 295 King 3 pc. set 409	<b>SERTA QUILT TOP - EXTRA FIRM PICK-UP SPECIAL</b> <b>TWIN</b> EA. PC. \$45* Full ea. pc. 65* Queen 2 pc. set 160 King 3 pc. set 235	<b>SERTA PREMIUM PEDI-C 15 yr. WARRANTY</b> <b>TWIN</b> EA. PC. \$78* Full ea. pc. 105* Queen 2 pc. set 245 King 3 pc. set 339	<b>SERTA POSTUREPEDI-C 352 COIL ULTRA FIRM 15 yr. WARRANTY</b> <b>TWIN</b> EA. PC. \$97* Full ea. pc. 154* Queen 2 pc. set 349 King 3 pc. set 469
--	--	---	--	---	--

**FREE HEAVY DUTY BED FRAME**  
Deliver and Installation Included with Every Set Except Pick-Up Specials

\*Above prices reflect set prices, mattress only slightly more.  
"We'll Beat Any Price... Period."

**MATTRESS FIRM II**

<b>WILMINGTON</b> Beaver Valley Plaza, Rt. 202 (next to Brandywine Raceway, across from Miller's Furniture, 1/3 mi. S. of PA border) <b>(302) 479-9559</b>	<b>NEWARK</b> College Sq. Shopping Center Rt. 72 & 273 (near Drafting 2) <b>(302) 368-2529</b>	<b>OTHER LOCATIONS:</b> • Fraser • Spring House • Newtown Square • Doylestown • Collegeville
---	--	--



**VISIT WITH SANTA**

December 19th  
1-5 PM

FREE CANDY & BALLOONS

A Gift Anyone Can Use  
• Holiday Ice Cream Cakes -  
• Order Now!  
• Gift Certificates

**The Great American ICE CREAM FACTORY**

Ice Cream Parlor & Restaurant

Rt. 40, Elkton, MD (301) 398-4919

1/2 Mile East of Rt. 213 - 1.7 mi. from DE Line  
Open Mon. & Tues. 11-6  
Wed. & Thurs. 11-10, Fri. & Sat. 11-11,  
Sun. 12-10

\*\*\*\*\*  
**FINANCING AVAILABLE**  
\*\*\*\*\*

**Hot Air Furnace**  
**Heil High Boy Upflow**  
87,000 net BTU's

**\$722.00**

**Hot Air Furnace**  
**Heil Low Boy Upflow**  
87,000 net BTU's

**\$837.00**

**Hot Water Boilers**  
**Crown Cast Iron**  
127,000 net BTU's  
less coil

**\$1,269.00**

**All Size Units**  
**Oil or Gas**  
Call For Low Prices



Rt. 40 & 213, Elkton, MD  
398-2494 DOMESTIC

**THE PENNSYLVANIA OPERA THEATER**  
IN

R O S S I N I



SUNG IN ENGLISH  
Friday, December 18 • 8:00 PM  
\$28.00, \$24.00, \$20.00

JAZZ SENSATION  
**STANLEY JORDAN**  
With Special Guest  
**MOSE ALLISON And His Trio**



Saturday, January 9 • 8:00 PM  
\$17.00, \$15.00, \$13.00

TICKETS TO THESE OR ANY  
GRAND EVENT MAKE GREAT  
HOLIDAY GIFTS  
CALL FOR FREE CALENDAR OF EVENTS

Box Office (302) 652-5577

Box Office hours are Monday through Friday 11:00 a.m. to 4:00 p.m. Tickets may also be purchased through all Ticketron locations or by calling Ticketron at (800) 233-4050 or Tickettown 656-9797. These programs are made possible in part through a grant from the Delaware State Art Council, an agency of the State of Delaware and the National Endowment for the Arts, a Federal agency.

## SUCCESSFUL LIVING SEMINAR

with Stephen and Barbara Arbo

7:00 p.m. SATURDAY, DEC. 12

Also speaking in the 10:15 a.m. service of the Word of Life Christian Center

Stephen and Barbara Arbo have an international ministry of sharing how God's Word can change the circumstances of life. Through praying God's Word and holding fast to His promises, Stephen and Barbara have seen the miraculous happen in their lives. This includes the loss of 120 pounds of overweight from Barbara. They now travel extensively teaching how God's Word can bring success in every aspect of our daily lives.

Stephen has a strong teaching ministry and a dynamic singing voice.

Barbara has authored several popular books and her teaching has changed the lives of thousands.

Be a part of this outstanding seminar which will teach the principles for success in:

MARRIAGE • BUSINESS • RAISING CHILDREN • WEIGHT LOSS  
OVERCOMING HABITS • OVERCOMING FEAR



Word of Life Christian Center

105 Barksdale Professional Center Barksdale Rd. Newark

For information call 453-1183



## UNIVERSITY

## University detective uncovers history

Archaeology is somewhat similar to a Sherlock Holmes mystery. The clues are there, but it takes an expert to unravel them and fit them into a meaningful pattern.

One such "detective" of ancient civilizations is Dr. Stephen Sidebotham, associate professor of history at the University of Delaware. Sidebotham spent the summer of 1987 directing the first University of Delaware-sponsored survey-excavation at Myos Hormos on the Red Sea in Egypt.

Archaeology, like a mystery, has unexpected surprises. From writings of the past, Sidebotham expected to find a third century B.C. port city at the site of Myos Hormos.

It was frustrating, he reported, to find no trace of a port. Instead, he found a fifth-to-seventh-century A.D. Byzantine fort in excellent condition — an exciting archaeological discovery.

The clues and artifacts at the site were abundant. Careful analysis of coins and pottery suggest that the outpost might have been built or refurbished as part of the empire-wide fortification and church building project of Emperor Justinian I, who ruled the late Roman/Byzantine empire from 527-565 A.D.

Dessicated date, grape, watermelon and other seeds, animal and bird bones, plus large quantities of conch shells, give an indication of the garrison's diet. The droppings of goats, sheep and camels tell what animals were at the fort; the first probably were used for food; the camels could have been used both for mounts and food.

Among the artifacts were fifth-to seventh-century cloth, coins, rope, string, basketwork, leather, glass, an iron fish hook, clay bottle stoppers, a harpoon and a sling stone.

The walls of the fort were interspersed with a dozen towers and two arched gateways. Inside were barracks, storage magazines, an administration

building and, probably, headquarters. Excavations demonstrated that wooden beams and palm matting were used as roofing materials in some areas.

From the condition of the fort, Sidebotham surmises that it was probably peacefully deserted during an Arab invasion in the seventh century A.D.

The project surveyed, mapped and plotted ancient sites in the area of approximately 10 kilometers around the fort. Among those working on the project was a University graduate student in ancient history, Carol Maltenfort.

Getting permission and making preparations for an archaeological expedition are almost as involved an operation as the excavation itself.

In 1985, Sidebotham said, he had everything lined up, including permission from the Egyptian Antiquities Organization for a coastal survey of the Red Sea, when five days before departure, his permit was canceled, probably by the military.

"I'll never know the reason behind the decision," he said. "Possibly it was because of old land mines in the area. You have to be careful, even in cleared sections, and I guess they didn't want any foreigners blowing themselves up."

However, all was not lost. It was while visiting Egypt to determine what the problems were that Sidebotham decided to excavate at Myos Hormos. Conditions for excavation were good there, with sea and desert and a breeze the entire time.

Egyptian soldiers guarding the border visited the site on their camels and stayed to talk and have tea, he said.

The Egyptian government keeps all but 10 percent of what is found at an excavation, unless it is a major find. All artifacts that are collected at a site are crated and shipped to the Cairo Museum to be examined and divided. Sidebotham shared many ancient objects with the University's Museum Studies Program.

## Gershwin honored

This year marks the 50th anniversary of the passing of the American composer George Gershwin.

To honor Gershwin, the Sunday Opera series on WXDR-FM 91.3 will present "Porgy and Bess" at noon Sunday, Dec. 13.

The stars of this RCA Red Seal recording are Donnie Ray

Albert as Porgy and Clamma Dale as Bess.

The orchestra, chorus and children's chorus are under the baton of John DeMain.

This is the now-famous Houston Grand Opera Company production which has toured to rave reviews.

## DOWNTOWN NEWARK MAKES YOU LOOK GOOD

Last December 23 he found himself standing in the white glare of a huge department store — his neck aching, and feeling desperate to find a present that looked halfway interesting or original.

And that's what he settled for, a present that was only halfway interesting or original.

She told herself it was the thought that counted...

This year he discovered the offbeat and distinctive stores of downtown Newark — leisurely strolling Newark's famous small-town atmosphere, and looking with confidence for that perfect gift.

Naturally he found it...

She was very appreciative...



Break away from standardized, run-of-the-mill gifts and charm them with a present from the unique stores of downtown Newark.

**npa**  
NEWARK PARKING AUTHORITY

44 Downtown Stores Validate Parking

**COMMUNITY BUSINESS MACHINES**  
Office Machines • Office Supplies  
Cash Registers  
133 E. Main Street  
453-1159

**DELAWARE SPORTING GOODS**  
42 EAST Main St.  
368-1653

**Christiana Stationers II**  
OFFICE SUPPLIES & FURNITURE  
Christiana Stationers II — We carry a full line of office supplies and furniture. Christmas Specials for home and office!

2 Drawer \$87.10  
4 Drawer \$120.25  
Office Chairs From \$70.85  
Low prices on business cases, portfolios and appointment books.  
90 E. Main St. 733-0830

**NEWARK LUMBER CO.**  
221 EAST MAIN ST.  
737-5502

**Gamble's Newark Florist**  
FRESH ARRANGEMENTS  
Plants  
Silks  
Gift Items  
Fruit Baskets  
Cemetery Pieces  
NEWARK FLORIST  
353-1211 or 353-1219  
258 E. Main St. NEWARK

**CAPTAIN BLUE HEN**  
COMICS & CARDS  
280 E. Main St.  
(Next to the Police station)

WE BUY • SELL • TRADE  
SUBSCRIPTION SERVICE  
GIFT CERTIFICATES  
OPEN 7 DAYS PER WEEK  
CALL 737-3434

## NEWARK CAMERA SHOP



63 EAST MAIN ST.  
368-3500  
Sony Video 8 Specialists  
CHECK OUR PRICES

make this Christmas  
a *MINSTERS* Christmas  
with Gifts for Everyone on

Your list... for your

Shopping Convenience we offer

**Christmas Hours**  
Starting November 27th  
Monday - Friday 9:30 am - 9 pm  
Saturday 9:30 am - 7 pm  
Sunday 12 noon - 5 pm  
**Sunday Shopper Special**  
*MINSTERS* 20% off  
Jewelers since 1895  
Newark Shopping Center  
Newark, Delaware 19711  
302-737-5947

## NEWARK CO-OP NATURAL FOODS MARKET

TIRED OF TIES? BORED BY BRIEFS? SICK OF SOCKS?  
Then Give A Unique Gift This Year.

Don't fight the mall crowds for mediocre presents. Stop by the Co-op. Everybody eats, right? Well, our fruit & nut plates and custom gift baskets make wonderfully delectable and memorable holiday feasts. We'll custom wrap anything in one of our natural willow baskets and we have a big selection to choose from.

280 EAST MAIN STREET  
(next to the Police Station)  
368-5894  
Open Mon.-Sat. 10 a.m.-8 p.m.

**wick's**  
Ski and Sport  
M-F 10-8  
S 10-5  
12-5  
Newark Shopping Center 737-2521

**COMICS & ROBOTS**  
46 1/2 E. Main St.  
(Above Grass Roots)  
454-7115

**Campbell Travel Center**  
126 East Main Street  
P.O. Box 300  
Newark, Delaware 19715-0300  
(302) 731-0337  
Ask Mr. Foster

**the Lattice Works**

**W.L. GORE and ASSOCIATES, INC.**  
FABRICS DIVISION — RETAIL STORE  
165 E. MAIN STREET 454-7555  
GORE-TEX® Fabric  
HOURS:  
Mon.-Thurs., 10-5 • Friday 10-7 • Saturday 10-2

**cameras etc.**

132 E. MAIN ST. 453-9400  
PRESENT THIS COUPON FOR  
50% OFF  
List Price Of Our Local Lab Processing

## NEW RELEASE



*Wickoff*

**TENDING TO THE MORNING**  
By C. Phillip Wikoff Image: 22 1/4" x 32", \$100

## YOU'VE BEEN FRAMED

Framed Gifts of Distinction For As Low As \$20  
LET US CUSTOM FRAME YOUR CHRISTMAS  
Diplomas • Medals • Photos • Children's Art  
Christmas Framing Deadline: 12/12/87

**YOU'VE BEEN FRAMED**  
170 E. Main St. Newark 366-1403



**Charlie B. TRAVELS**

A Full Service Travel Agency  
Want Santa to leave a cruise in your stocking, the Bahamas or a travel gift certificate under the tree? Call Charlie B.

77 E. MAIN ST. 368-9151



**Lyons & VanArsdalen**

## PHYSICAL THERAPISTS

CALL FOR APPOINTMENT  
(302) 834-0600

Peoples Plaza Glasgow, DE

Routes 40 & 896 - Suite 34  
Accept Assignment Medicare

## Now You Can Have A — Complete Business Phone System

- EKS Unit Plus 6 Telephones
- Complete Professional Installation

**SPECIAL**  
**\$1799.**

(Offer Good Till Dec. 31, 1987)

## Here's A Unique Gift Idea —



"STATE-OF-THE-ART"  
Hands-Free Dialing Telephone

Model FV1000 by Southwestern Bell

Call For Complete Details

Professional Communication Systems  
by **ADVANCED BUSINESS COMMUNICATIONS**

ELKTON, MD 301-392-5282



## COVER STORY

## ROUT/ from 1a

Rittenhouse, chairman of Newark High's fine arts department, produces the event with the assistance of his wife Loretta, who enjoys experimenting with medieval cookery.

Together, they have researched early music and European customs extensively, attending routs and rout workshops from Castle Howard in York, England, to Indiana University in Bloomington, the largest music school in the world and home of a famous rout that plays nightly for a solid month.

Because of the large amount of work and research involved, most routs are staged by universities, community college or church organization. Newark High's ambitious undertaking is somewhat of a rarity, yet its Madrigal Consort has received acclaim for its professional quality musical talent and its authentic Elizabethan cuisine.

For four weekend nights, guests numbering 200 or more fill the high school dining hall, which has been completely draped in hundreds of yards of subdued green, red and orange flameproof fabric for the occasion.

A 16-year accumulation of baskets, banners and medieval decorations are scattered about the room, while the light of 200 candles set in wrought iron candelabras dances on jeweled costumes of velvet, fur and brocade.

Thirty-five of the period garments, containing more than \$7,000 in materials, were



made for the production by Ana Muxo, a former Newark resident who is now working as a costume designer for Disney World's Epcot Center.

By adding a smattering of aromatic spice and the warm patina of pewter to this festive parade of costumed nobility, the stage is set for holiday enchantment.

The evening's entertainment is from England's "golden age," when the country is said to have been "a nest of singing birds." Music from woodwinds, heralding brass and string ensembles are pleasantly combined with short commedia performances from Shakespearean plays, dances and the antic mimes.

The Madrigal Consort

Singers unite in unaccompanied voice to sing traditional 16th century favorites.

"Madrigal" refers to a popular vocal style of the period, and "consort" means family. And according to Rittenhouse, members of Newark High's prestigious organization "form ties that last lifetimes."

Sophomores, juniors and seniors addition to join Rittenhouse's 16-20 member Madrigal Consort class. The studies are demanding, but students treasure their learning opportunities. Each year, many consort alumni return to their high school family to renew old acquaintances and friendships in the warmth of the holidays. Some even help out in the rout kitchen.

Under the supervision of Loretta Rittenhouse, students who perform in the rout help prepare the nightly multi-course buffets, which are presented to guests in four "removes" according to Elizabethan practice.

The young chefs make creamy soups with the milk of crushed almonds, and learn about the values of medieval seasonings such as rose water, marigold and fennel.

The kitchen opens at 9 o'clock the morning of each rout. The menu, featuring delights such as roasted romps of beef, kremed shallots, Yorkshire puffs and fruit pasties, remains constant from year to year.

"A lot of our success, we owe to those parents who help in the kitchen," says Loretta

Rittenhouse. "At one point, after the salad has been removed, the trumpets blare and the bell ringer announces the master carvers. They are six fathers or associated men in costume who come into the hall where everyone can see them and carve 60 pounds of roasts and turkeys. Some have a nice theatrical flair and sharpen their knives like they're really enjoying their parts."

For the sake of medieval authenticity, the local nobility will not be served coffee or potatoes. However, in a single evening they will compensate for that slight sacrifice by

swilling 20 gallons of cider and wassail and about three cases of sparkling grape juice. The will consume 50 pounds of flour and 40 pounds of butter, baked in a decadent array of breads and popovers.

On the lighter side, it was common during the period for a castle's canines to scavenge around the feet of guests seated for dinner. The habit must have complicated meal planning, as a busy cook pent up in the kitchen had no way of determining "who was wooing what."

Fortunately, 400 years and a few health regulations have gotten rid of the guess work.

This year, minus their four-legged companions, Newark's lords and ladies are expected to lap up 120 pounds of beef, 140 pounds of fowl and 90 pounds of ham during each evening's feast.

For those who miss the rout, reservations are now being accepted for the high school's "royal progress" to be held in May.

That event is an exciting outdoor medieval feast held in the school courtyard and featuring tumblers, craftsmen, instrumentalists, actors and, of course, the Madrigal singers.

For details, call 454-2326.

## LEGAL NOTICE

CITY OF NEWARK  
DELAWARE  
COUNCIL MEETING AGENDA  
December 14, 1987 - 8 p.m.

1. SILENT MEDITATION & PLEDGE OF ALLEGIANCE
  - 2-A. CITY SECRETARY'S MINUTES FOR COUNCIL APPROVAL:
    1. Regular Meeting held November 23, 1987
  - 2-B. ITEMS NOT ON PUBLISHED AGENDA - Time Limit 20 Minutes
    1. Others
  3. ITEMS NOT FINISHED AT PREVIOUS MEETING:
    - A. Appointment to Community Development Advisory Commission
  4. VOUCHERS PAYABLE REPORT - Next Meeting
  5. RECOMMENDATIONS ON CONTRACTS & BIDS:
    - A. Contract 87-33, Purchase of Sodium Fluoride
    - B. Contract 87-34, Purchase of Sanitary Sewer Sampling Services
    - C. Contract 87-35, Purchase of Sanitary Sewer Manhole Frames & Covers
    - D. Contract 87-39, Road Construction & Repair Materials
    - E. Purchase of Water Meters
  6. ORDINANCES FOR SECOND READING & PUBLIC HEARING:
    - A. Bill 87-40 - An Ordinance Amending Ch. 20, Motor Vehicle & Traffic, By Prohibiting Parking During Certain Hours on Both Sides of Hillside Road, Between West Main Street & New London Avenue
    - B. Bill 87-42 - An Ordinance Amending Ch. 10, Elections, By Deleting Article XII, Registration Appeal Board, Effective January 1, 1988
    - C. Bill 87-43 - An Ordinance Amending Ch. 20, MV&T, By Prohibiting Parking on the North & South Sides of Old Paper Mill Road Between Paper Mill Road & Curtis Lane & By Prohibiting Parking in the "T" Area at the East End of White Clay Drive
  7. RECOMMENDATIONS FROM THE PLANNING COMMISSION/DEPARTMENT:
    - A. Request of Walter Love for a Special Use Permit to Permit Used Car Sales at 409 E. Cleveland Avenue
  8. ORDINANCES FOR FIRST READING:
    - A. Bill 87-44 - An Ordinance Amending Ch. 20, MV&T, By Eliminating Parking Enforcement In Metered Zones During Certain Holidays & By Authorizing the City Manager to Declare Other Free Parking Days Within the Central Business District When Appropriate, 2nd Read. 1/11/88
  9. ITEMS SUBMITTED FOR PUBLISHED AGENDA:
    - A. COUNCILMEMBERS:
      - None
    - B. COMMITTEES, BOARDS & COMMISSIONS:
      - None
    - C. Others:
      - None
  10. ITEMS NOT ON PUBLISHED AGENDA (As Time Allows & As Council Determines)
    - A. Councilmembers:
      - None
    - B. Others:
      - None
  11. SPECIAL DEPARTMENTAL REPORTS:
    - A. Special Reports from Manager & Staff:
      1. Approval of Artesian Water Company Development Agreement
      2. Alderman's Report & Magistrate's Report
      3. Financial Statement
      4. Request for Executive Session re Litigation
- The above agenda is intended to be followed, but is subject to changes, deletions, additions & modifications. Copies may be obtained at the City Secretary's Office, 220 Elkton Road, np 12/9-1

## AUCTION SERVICE

PUBLIC AUCTION  
SAT., DEC. 12TH, 10:00 A.M.  
FINE ANTIQUES - GLASSWARE - COLLECTIBLES

Wm. & Mary high chest 8 drawer ball feet, wood pulls, dove tailed top paneled sides nice circa 1760.  
Wm. & Mary lamp table, Victorian table Victorian dresser w/marble top, 1 oval & 1 square Victorian tables, pine & oak washstands, cherry dresser w/matching bed, baking table w/flour bin, 2 drawer spoon cabinet, Singer treadle sewing machine, Duncan Phyllis dining room suite w/china cabinet, buffet, table, 6 nice fanback chairs good cond., small liquor cabinet, nice wing-back chair, 2 Duncan Phyllis drum tables w/inlaid tops, Karastan rug 9x12, dinette set, set of 6 Hitchcock rush bottom chairs, set of 6 half spindle back Windsor, flax winder, Boston rocker, small butterfly drop-leaf table, Victorian settee w/2 matching chairs.

GLASSWARE-HUMMELS-COLLECTIBLES  
2 lead crystal bowls, some press glass bowls, ass't goblets, set of 8 goblets w/gold oak leaf overlay, pitcher & 5 glasses hand painted, pitcher w/fluted top, service for 12 Wentworth china, hand painted bowl F-235 Roseville 1 gal. flower vase, other Roseville pieces, candle holders, 2 wood wall mirrors in gold finish (nice), assorted costume jewelry, tin Santa Claus (nice), oil lanterns, copper kettle, brass boiler pan like new, parlor lamp w/brass shank nice, old wash boards, other nice glass pcs. brass hanging dial scale w/plate (nice), ass't. bottles & glass insulators, big white enamel coffee pot, 4" water wheel, 4x4 leaded glass window ass't. colors good shape, Queen child's stove, brass umbrella stand, old crocks, 5 gal. water jar w/Indian head, HUMMELS: Ashtray, Boy w/Toothache, Meditation, Sensitive Hunter, Little Hiker, Madonna, Little Scholar, Just Resting, Doctor, Bird Duet, Be Patient, Retreat To Safety, Little Fiddler (chipped), Happy Pastime, Apple Tree Boy - Most are 1960-1972 - Nice collection, 3 Wedgewood pieces, many more small collectibles & useable items.

Terms: Cash, Check only if known by auction firm. Phone prior to auction for check approval

Auction ordered by:  
Estate of  
Theodosia Wilson  
& Dean Marshall  
of Cecil County, MD  
and Estate of Herman Vines  
Oxford, PA 19363

Auction moved to:  
Hunter's Sale Barn, Inc.  
Rt. 276, Rising Sun, MD 21911  
Phone (301) 658-6400

Your Auction Family:  
Norman E. Hunter, Carol A. Hunter  
& Chris E. Hunter

ANTIQUE CONSIGNMENTS TAKEN  
NO RESERVE ITEMS

SHOW DATE FRI., DEC. 11TH  
9:00 A.M. - 5:00 P.M.

Hauling Available - Lunch Served  
"CECIL COUNTY'S LEADING AUCTION SERVICE"

WB 12/9-1wk

**Cecil County  
BALLOON ADVENTURES**

**\*You Can Do It!**

**\*Reliable**

**\*Government FAA Licensed**

**\*Ready To Lift Your Spirits**

**\*Fun For The Whole Family!**

**\*We FLY Only When Weather Is Favorable**

**Owned & Piloted by  
RUSS COLLINS  
Elkton, Md. 398-5618**

**Gift Certificates Available  
At SEA'S BEST - 398-9689  
or  
Builders' Choice 398-9585  
"ANNXC"  
Is A Balloon Ride**

**\*Gift Certificate Available**

**\*For Christmas, Weddings, Birthdays, Anniversary or Any Occasion!**

**Be Our Neighbor  
TimberBrook  
North East, MD**

**8.45% FINANCING AVAILABLE TO QUALIFIED BUYERS**

**ONLY 8 4 LEFT IN SECTION I  
We Invite You To Visit Our Models  
Now Open For Inspection**

**- STANDARD FEATURES -**

- 2 or 3 Bedrooms
- Full Bath & Powder Room
- Armstrong No Wax Floors
- Range & Range Hood
- Garbage Disposal
- Anderson Windows
- French Doors
- Baseboard Heat

**MANY OPTIONAL FEATURES AVAILABLE  
LOW DOWN PAYMENTS - FHA, CONVENTIONAL FINANCING AVAILABLE**

**OPEN: MONDAY - THURSDAY 10 A.M. - 6 P.M.  
SATURDAY & SUNDAY 12 NOON - 5 P.M.**

**Located on Rt. 272 off Route 40, 1/4 mile north of traffic light.  
Take first right just past North East Plaza**

**CALL 301-287-2277 FOR ADDITIONAL INFORMATION**

**Delaware Residents Contact:  
CENTURY 21, GOLDSBOROUGH, Exclusive Agency 302-836-1444  
A New P.L.D. Community With Something Special To Offer!**

**A. C. Litzenberg & Son**  
*Realtors · Appraisers · Builders*

**CECIL & NEW CASTLE COUNTY MULTIPLE LISTING SERVICES**

**BROOKSIDE, DELAWARE**  
Spacious 3 bedrooms, 2 bath ranch on a 1/2 acre lot in well-maintained development. Centrally located. Must see to appreciate. Call Maureen McFarlane, 398-4730, for more information. \$74,900. #20-2076.

**SENSATIONAL PRICE REDUCTION**  
Immediate occupancy in this 3 bedroom, 1 bath 2 story which was recently remodeled. Reduced from \$41,900 to \$35,000. Call 398-3877. #40-2004.

**COUNTRY LIVING** - at its best... This 3 year old, energy efficient, 3 BR, 3 bath bi-level is nestled at the edge of a 1.8 ac. wooded lot w/circular driveway. Over 2,000 sq. ft. of living area, a spacious dining room with sliding glass doors onto a 3 tier wood deck, 25x25 lower level family room has ceramic tile floor and wood burning stove. Other features include a whirlpool bath, skylight and ceiling fan. \$124,900. Call 287-8700 or 398-3877. #20-2062.

**ELKTON CONVENIENCE** - Convenient to most everything is this 2 story 4 bedroom home. New vinyl flooring in kitchen and dining room. New carpeting in living room. \$62,500. Call 398-3877. #20-2071.

**LOVELY COUNTRY SETTING** - 3 bedroom, 1 bath rancher, 2 car attached garage and new fenced yard all comes with a lovely view in Holland Acres. \$72,000. Call 398-3877. #50-2047.

**ENVIRONMENT TAILORED FOR YOUR FAMILY** - Privacy and convenience are both offered in this 3 bedroom, 1 bath rancher. Located on 1+ acre in a nice non-development. Living room has a beautiful bay window. Only minutes from Elkton or Newark. \$73,900. Call 398-3877. #20-2058.

**MARLEY FARMS** - This two story brick front Colonial offers a unique combination of location, design, and value. Exceptional living space with four bedrooms, two and one half baths on over an acre of land. Many, many extras. \$169,500. Call 398-3877. #20-2046.

**BOATERS AND BAY LOVERS** - This 4 BR Cape Cod is located in a water-oriented community offering deeded water rights to a private beach. \$70,000. Call 287-8700. #10-2067.

**EXECUTIVE WATERFRONT RETREAT** - On the great North East River. View the water from 3 sides. Relax in privacy or entertain in the huge Great Room. 3 BR, 3 baths. Don't wait this one is unique and will SELL! \$325,000. Call 287-8700. #30-2068.

**FAIR HILL** - Lovely 4 BR cape cod currently under construction on Hilltop Road. Nearly 2,000 sq. ft. of finished living space featuring finished family room, two car attached garage and heat pump, situated on a beautiful wooded .75 acre lot. Won't last long. \$135,000. Call 398-3877. #20-2040.

**EARLY AMERICAN**  
Situated in quiet wood setting. Large trees and 350 ft. from country road, antique doors, floors, antique brick used on all 4 fireplaces. Guest cottage at end of landscaped garden. New bank barn in Early American style, wired and insulated. Small orchard, 12x12 gazebo. \*\*\*Seller will consider financing part of loan.\*\*\* \$385,000. Call 398-3877. #20-2048.

**GRAND DISCOVERY FROM DELAWARE** - 3 bedrooms, 1 bath split level located in Todd Estates. Especially livable and priced only \$77,000. Call 398-3877. #20-2059.

**COUNTRY LIVING AT ITS BEST** - Rancher with fireplace, screened porch and 2 decks. Woods in front and fenced pasture in back, 2 stall barn and BBQ Gazebo. You'll love this one! \$134,900. Call 287-8700. #20-2054.

**FOR MEMORABLE SUMMER DAYS** - Make your Summer Memories here in this 3 BR, 1 bath waterfront ranch. When Summer comes you'll be ready!! Buy now at only \$127,500. Call 398-3877. #30-2070.

**ACTIVITY MINDED?** This cottage is for you! It has 2 bedrooms, 1 bath and includes some furniture, shed and lots of shade. \$49,900. Call 287-8700. #30-2020.

**GOOD INVESTMENT** - 4 BR year round house overlooking the North East River plus a 2 BR cottage. Beautiful beach fronts this 112 acres. \$275,000. Call 287-8700. #30-2065.

**WE GUARANTEE TO ADVERTISE YOUR HOUSE EVERY WEEK UNTIL IT'S SOLD. CALL US NOW FOR DETAILS**

**ELKTON  
398-3877**

**NORTH EAST  
287-8700**



## COVER STORY



Colonial troops march through Dover Monday morning during the Delaware bicentennial celebration. At left, an all-star line up of dignitaries, including former United States Supreme Court Justice Warren Burger, U.S. Senators William Roth and Joseph Biden, Gov. Michael N. Castle and Lt. Gov. S.B. Woo. At the microphone is Dr. James Soles of the University of Delaware, portraying James Madison.

200/ from 1a

Delaware is believed to be one of the first states to sign the Constitution because of the protection the document provided small states. The small states would be able to stand alone and not become parts of larger states.

Bill Davis of Newark was among the spectators at the festivities, while at the same time he was coordinating some of the events. Davis, an employee of the State Division for Facilities Management, helped plan the day's events.

"I'm glad I got to be a part of it," said Davis.

Much work went into planning the event. Davis said he had only

few months to prepare. "I wish we had more time. Everything seemed to come together in the last week."

Dr. Claudia Bushman of Newark, Delaware Heritage Commission executive director, has been planning for this event

for more than two years. "I feel things couldn't have gone better."

The weather was perfect for the event. The only problems they experienced were time shortages causing some delays.

"I think it (the celebration) is very nice," said Bushman. "I

wish more people had an opportunity to come."

The day's celebration was capped off with a black tie gala dinner and dance at the Dover Air Force Base. Proceeds from the event benefit the First State Constitutional Scholarship Foundation.

VOTE/ from 1a

everything except registering."

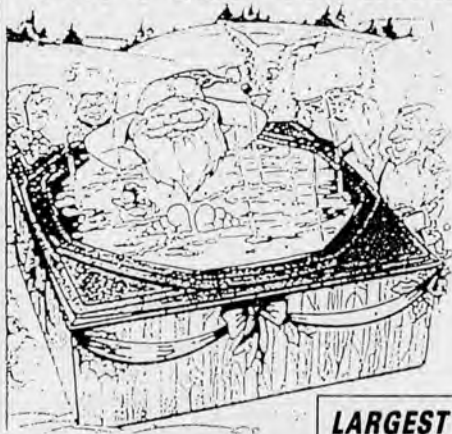
The number of residents registered to vote in city elections is expected to increase under the new plan. Currently, 8,600 residents can vote in city elections. Burns predicts that about 9,000 residents will be able to vote in the city under the new system.

Other county municipalities with their own registration systems are expected to keep a close eye on Newark's new system. They want to see how the system works here.

In September, City Council unanimously approved an ordinance setting up the new system.

The change in the city's voter registration system is allowed under an amendment to the city charter approved by the state legislature earlier this year.

## Give The Gift You Can Enjoy All Year 'Round... JACUZZIS



USE THAT

- Extra Room
- Basement
- Back Porch
- Patio
- Florida Room

**FREE**  
Chemical  
Kit and  
Thermometer  
Test Kit

Our Exclusive Variety of Shapes and Sizes Make It Easy To Turn Unused Space Into A Family Spa Room.

Entirely



**LARGEST RETAILER IN THE EAST**

### More Selection

Jetstream  
"BERKLEY"  
Our most popular spa for home entertaining. Outstanding comfort features are: 6 foot lounge, multi-level bench seating and a deep back massage seat. Designed to accommodate six adults.

\*2995<sup>00</sup> or \*65<sup>00</sup>/mo.

Jetstream  
"LINTON HILL"  
This specially contoured spa is as rich in comfort as it is in looks. By far our best selling spa. Includes two deeply contoured hydrotherapy chairs, two roomy bench seats, and one sunbathing hydrotherapy lounge.

\*2295<sup>00</sup> or \*55<sup>00</sup>/mo.

Jetstream  
"NEWTOWN"  
The Newton is a medium sized portable. Great for two fun, for four. Offered as a completely portable spa. Features include two contour seats and a relaxing lazy lounge. Fits thru any doorway. Plug-in and go.

\*2495<sup>00</sup> or \*55<sup>00</sup>/mo.

Financing  
Available



Jetstream  
"TARREYTON"  
The Tarreyton is our condo model. It fits anywhere. Completely portable with room for two. Just plug in and fill and enjoy the benefits of a full function spa.

\*1788<sup>00</sup> or \*42<sup>00</sup>/mo.

### More Experience

**JOE ORDINI'S**

Mon. 10-8; Tues., Wed. 10-6; Thurs. & Fri. 10-9; Sat. 10-5; & Sun. 12-4

### More Value

- We've selected the finest brands
- Our Buying Power Guarantees you the Lowest Prices
- Hundreds of spas in stock & ready for immediate delivery

**368-SWIM**  
1620 Kirkwood Hwy.  
Newark, DE  
368-7946

1.95 to Exit 3, Rt. 273 to 1st traffic light (Harmony Rd.) turn right to dead end and turn left 1/4 mile on left.

## Red Ribbon Recliner Sale

Now you can enjoy the comforts of a two position recliner and the rich styling of a 3 year wear dated leather-grained vinyl.

ONLY  
**\$279<sup>00</sup>**

Quantities Limited  
Most other styles in stock to choose from at great savings.

Delivery Guaranteed  
before Christmas if  
purchased by  
December 21st!

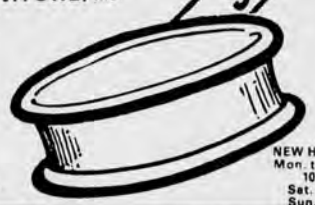


**Jodlbauer's**  
FURNITURE, Inc.

A Reflection of Your Good Taste  
Serving The Tri-State Area

(301) 398-6200  
Rt. 40 1 mi. below  
MD/DE Line,  
next to the new  
"Village at Elkton",  
Elkton, MD

ALWAYS FREE DELIVERY & SET-UP  
• MFS, MC, VISA or  
JODLBAUER'S REVOLVING CHARGE •  
Decorator Service Available



NEW HOURS:  
Mon. thru Fri.  
10-9  
Sat. 10-6  
Sun. 12-5

## STIHL'S THE ONE. Ask Santa for a STIHL



Reg. \$199.99 SALE **\$169<sup>99</sup>**

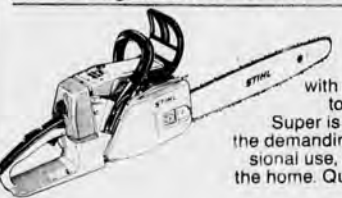
The Stihl chain saw you get this Christmas to cut the Yule log and keep the woodpile stocked will be doing the same job next year, and the next, and the next... it's the best gift you could get. Or give.



**LIGHTWEIGHT  
and  
HEAVY-DUTY**

This compact, lightweight saw offers many professional features like Stihl's heavy-duty, anti-vibration system, automatic chain oiling, a specially-impregnated, long-life cylinder and more. It's a lot more saw for the money. It's a Stihl.

Reg. \$249.99 SALE **\$239<sup>99</sup>**



Save now on the 024 Super from Stihl. Easy to handle, with an outstanding power-to-weight ratio, Stihl 024 Super is tough enough to meet the demanding standards of professional use, as well as jobs around the home. Quickstop™ Inertia Chain Brake standard.

Reg. \$344.99 SALE **\$329<sup>99</sup>**

High power and low weight - the Stihl F552AVE Trimmer/Edger is perfect for the homeowner! With easy-starting electronic ignition. Goes almost anywhere with gasoline-powered versatility. Try one today.

Reg. \$179.99 SALE **\$159<sup>99</sup>**



Sale Ends  
Dec. 24th!

**STIHL**  
NUMBER ONE WORLDWIDE

2 Locations To Serve You!

**COOPER'S LAWN & HOME**  
2688 Pulaski Hwy. (Rt. 40)  
GLASGOW, DELAWARE  
(302) 834-0114

**COOPER ENTERPRISES**  
(Just 9 Miles So. of Ches. City, MD)  
CECILTON, MARYLAND  
(301) 275-2195

**GARFIELD'S**  
Pub  
and Eatery

THURSDAY, DECEMBER 10

**LADIES' NIGHT**

No Cover Charge \*1/2 Price  
Drinks to the Ladies All Night

Music By

**"THE DREAM"**

FRI. & SAT., DEC. 11 & 12

Garfield's Welcomes Back

**"L.A. ROCKERS"**

TUESDAY, DECEMBER 15

**JAMES & DAVE**

Featuring Soft Rock

TEEN NIGHT-SUNDAY 7-11 PM

Open Tues., Wed., Thurs. & Sat. at 8 PM  
Friday at 4 PM

ROUTE 40 - 5 MILES WEST OF ELKTON  
301-287-5600



## OPINION

## POSTBOX

## Network

...for the arts

To the Editor:

I was heartened to read your editorial about the arts in Newark. You will be pleased to know that an arts center is opening in Newark in January.

The center will feature local and international artists in a regular performance series, discussions, receptions with artists, workshops and seminars addressing the needs of the artist.

In addition to the regular performance series, special collaborative projects between artists of different disciplines will be featured.

Informal receptions will be held between artists and audience. At these receptions, we will offer light international cuisine.

The center will be open every Friday night for dancing.

What Newark needs is a community involvement and interaction with artists, and a performance series held on a regular basis. We expect artists, audience members and local businesses to all benefit from the regularly scheduled programs offered at the center.

I am encouraged by the support of area artists, the community, and directors of similar programs, and see the Center as an opportunity for artists to network and also for the community to benefit from an ongoing arts program.

Linda Moores  
Newark

## Arts center

## Brookside site?

To the Editor:

I have a suggestion for a Newark arts center — the former supermarket in Brookside.

I imagine that it is a large shell that could be renovated and adapted to a variety of needs. There would be plenty of parking space for evening performances, and other empty shops might serve as classrooms or whatever.

At any rate, something should be done about that ugly, boarded-up building. No European city would tolerate such an eyesore for years and years and years.

It is not fair to the citizens of Brookside, or to any of us in this area, for the county to allow that building to unfurnished and unused.

Meanwhile, as the old shopping malls deteriorate, more and more new ones are built. Someone is obviously making money on the situation, but our neighborhoods suffer.

Alice Vernier  
Lark Drive  
Newark

## Christmas shopping on 'Black and Blue Sunday'

Black Friday? Forget it. The day after Thanksgiving is a light shopping day compared to Black and Blue Sunday.

At least, that's one opinion after a frantic and largely unsuccessful weekend shopping trip.

This year I promised myself in October that I really, really would begin my Christmas shopping early. I promise myself that every year. I always break my promise.

Lo and behold, I look up and it's December. I have no idea what happened to November. I must have been in a coma.

Anyway, I agreed to go shopping Sunday with my wife Beth. We both had an inkling that it wasn't such a hot idea, knowing how I hate to shop. For anything. Anytime.

The day started pleasantly, with a light lunch. But I should have recognized the omen — we had to wait 15 minutes for a table in the restaurant.

While eating, we went over our lists. They weren't really very long, because Beth had already started buying for our two children. A breeze, I thought.

Wrong! We opened the day at Toys R Us. Generally, I love that store. It is located a convenient one-half mile from our pediatrician's office, so we visit it often. (In my day, you visited the doctor and you got a stupid plastic ring from an old cardboard box. Kids are smarter these days. They hold out for the toy store and, in our case,

Battle Beasts.)

My first mistake was getting a cart. We were going to pick up five or six mid-sized items, so I thought we'd need it.

Our hearts were set on the Sylvanian Family cottage, one of the few non-violent toys for which Noah and Adam had asked. (Don't you love how, during the season of peace on earth and goodwill toward men, kids ask Santa to bring them every conceivable form of pint-sized death and destruction?)

The aisles were jammed with other toy-seeking parents, and I quickly realized the cart was a liability. Speed and maneuverability were of utmost importance. I ditched it.

We looked and looked, inching along through the aisles before deciding this tack wasn't working. We retreated, and decided to head for Christiana Mall.

I pulled onto the Indy-style oval which circles the Mall and looked at the parking lot in total amazement. Every spot was filled. Around back, people had parked in the outlying dirt areas.

Nope. We decided not to try the Mall, and headed off to another shopping center, where Beth spent an hour behind a recalcitrant customer trying to use a credit card in the cash express checkout lane.

Still, however, no Sylvanian Family cottage. And it was getting dark. And cold.

One more stop, we decided. That's all Beth could stand because I was into my 'I'm sick

by Neil Thomas

## POSTSCRIPT



of shopping and can't take any more' mood.

We checked Sears. No cottage. We checked Penney's. No cottage. We checked a five-and-dime. No cottage. We got put on terminal hold trying to use the direct-line catalog phones at one store.

Both grumpy, we decided to make one more pass at the Mall. It was closing, and we were told at the store that they were out of the Sylvanian Family cottages. It had been shown on "The Today Show," and there had been a run on them.

We returned home. On our shields. Or in this case, shopping bags. Beat up, tired, frustrated and downhearted. Christmas? Bah! Humbug!

The next morning at work, I decided to call a few places to see if I could strike gold. Beth had remembered seeing a bear house at The Salty Fisherman on Churchman's Road. She figured it was gone by now, but I called anyway.

"What?" I fairly cried. "You have it? Yeee-hah!" I startled everyone in the newsroom. "Hold it for me, please. I'll be right there. I have to go to the bank, but I'll be right there."

I made it, they had it and my mood suddenly brightened. Bah, humbug? Heck, no. I was ready to buy Bob Cratchit a turkey!

## GIVE THAT SPECIAL SOMEONE A HOME IMPROVEMENT GIFT FROM THE LUMBER YARD

### Makita Tools--The Perfect Gift For The Serious Do-It-Yourselfer



**Makita 7 1/4" Circular Saw**  
Double Insulated, powerful 12 AMP heavy duty motor.

**\$119<sup>95</sup>**



**3/4" Cordless Drill**  
Variable Speed, Reversible

**\$69<sup>95</sup>**



**Makita Heavy Duty Finishing Sander**  
Palm grip type sander, double insulated. Compact and lightweight. Perfect for spot work.

**\$59<sup>95</sup>**



**Makita 3" Cordless Saw Kit**  
Weights just 3.7 lbs. Adjustable cutting depth to 1/2". 9.6V DC fast charge battery.

**\$119<sup>00</sup>**



**Makita Cordless 2-Speed Reversible Driver Drill**  
Drills 1/2" in steel, 1/2" in wood. Powerful 9.6V DC battery recharges in one hour.

**\$119<sup>00</sup>**



**10" Mitre Saw With Electric Brake**  
Double Insulated - powerful 12 AMP hi-tech motor. Clean mitre cuts up to 45 degrees - right or left.

**\$229**



**5-Ft. Stepladder**

**\$17<sup>95</sup>**



**6-Ft. Stepladder**

**\$20<sup>95</sup>**



**2-Ft. Step-Stool**

**\$7<sup>95</sup>**

Give A Gift Certificate And Let Him Choose His Favorite Makita Tool!

**STOP AT THE LUMBER YARD TODAY FOR MANY MORE IN-STORE SPECIALS**

## The LUMBER YARD Of Newark

On Albe Road in Old Baltimore Pike Industrial Park  
Phone: (302) 453-0540

7:00 A.M. - 5:30 P.M. Mon. - Thurs.  
7:00 A.M. - 8:00 P.M. Fri.  
8:00 A.M. - 2:00 P.M. Sat.

All Advertised Prices Are Picked Up; Cash and Carry.

### HAVE A NEW ARRIVAL?

Here's that unique gift you have been looking for. Tell Everyone With A Handpainted 7 Foot Stork.

Rents for 5 days, including a hand painted bundle announcing the new arrival's name, weight and date. The new parents keep the bundle.

**Gift Certificates  
A Great Shower Gift**

## Stork News™

For More Information Call **737-4421**

### UNCLE BOB'S WESTERN CORRAL

OPEN 7 DAYS A WEEK 7 AM to 9 PM  
**392-3195**

Serving Breakfast Starting SAT., DEC. 12th  
A Family Style Restaurant With Western Atmosphere

### WEEKEND SMORGASBORD BREAKFAST

ONLY **\$4<sup>50</sup>**

FEATURING:  
• Homemade Biscuits  
• Sausage Gravy  
• Chipped Beef Gravy  
• Homemade Apple Butter

565 G. KIRK ROAD, ELKTON, MD

Located On 250 Acre Farm At Pleasant View Stables

## Janvier

JEWELERS

Our expert sales staff will be happy to help you select something to fit your budget as well as your tastes...with the most extensive collection of colored stones in the area. And the biggest selection of mounted and unmounted diamond jewelry.

## WHOSE ON YOUR LIST??

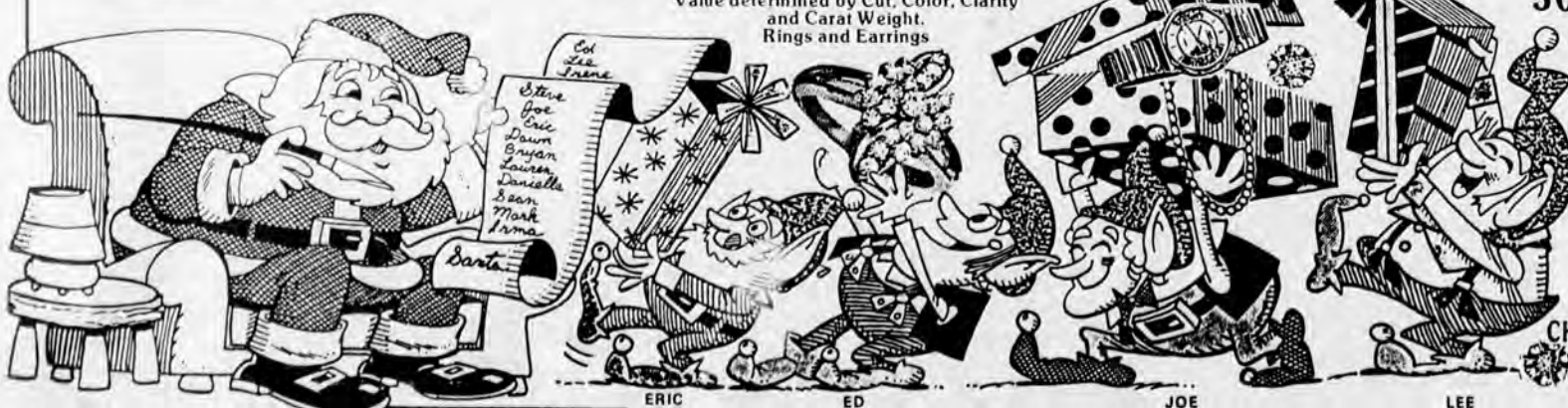
JUST IN TIME FOR CHRISTMAS  
PULSAR and SEIKO WATCHES  
**25 to 30% OFF**

MAKE IT A COLORFUL CHRISTMAS  
ALL COLORED GEM STONES  
Rings, Earrings and Pendants  
**50% OFF**

MAKE IT A WHITE CHRISTMAS  
WITH PEARLS  
**50% OFF**

ALL THAT SPARKLES...DIAMONDS  
Value determined by Cut, Color, Clarity and Carat Weight.  
Rings and Earrings

ALL THAT GLITTERS...GOLD  
Earrings, Bracelets and Necklaces  
**50% OFF**



CHRISTIANA MALL  
Newark, De.  
302-366-7448



OPINION

# Stopping 'tracer' firms

A woman called my office recently with an interesting dilemma, asking if I could help.

A "tracer" company had contacted her and said they'd tell her how to find money that the federal government owed her if she was willing to give up 30 percent.

That didn't sound like a very good deal to me, either, so I had members of my staff look into the matter.

What we learned is that thousands of people who have sold or refinanced homes under Federal Home Administration mortgages might be eligible for refunds and not even know it.

But don't hold your breath waiting for the FHA to call. That agency hasn't done much to let the public know about the refunds.

And, because of the Freedom of Information Act, the government has been required to give lists of people who deserve refunds to these "tracer companies," which locate people for a cut of the money. I think those

by U.S. Senator Joseph Biden



WEEKLY REPORT

home buyers should get 100 percent of the money owed to them.

Right here in Delaware, that means some 440 home buyers should receive every penny of the \$267,713 that is still waiting for them. Federal officials have been unable to mail out those checks because mortgage lenders failed to provide the FHA with complete or correct address information.

Here's what you need to know if you have or had an FHA mortgage:

You may be owed part of the insurance premium if you refinanced or sold the property before the mortgage term. You would not be eligible for a refund if the mortgage was foreclosed or assigned to the federal Department of Housing and Urban Development.

There are two steps you can take if you think you're eligible.

Call one of my offices in Dover, Georgetown or Wilmington. My staff can send you the form you'll need to complete and send to HUD.

Or, call HUD directly at 202-755-5616. Workers in the Insurance Operations Division in Washington will tell you if you have a refund coming back.

When calling, you should have your mortgage case number, the address of the property that was purchased and your name and current address.

The case number is particularly important because HUD previously filed mortgage records by number-only. That has also contributed to the problem of finding homeowners as the years have passed.

If you think you're eligible for a refund, my office stands ready to give you whatever assistance you need to regain money that is rightfully yours.

# Budget summit faltered

by U.S. Rep. Tom Carper



CAPITOL COMMENT

The budget summit agreement worked out between the president and congressional leaders left many Americans — not to mention countless foreign observers — more than a little disappointed.

The bipartisan agreement the group came up with was not the worst we could have done. The plan to prefer to the across-the-board cuts that would occur under Gramm-Rudman sequestration if the budget plan is not enacted.

But, though preferable to sequestration, the budget plan now being considered accomplishes relatively little in our efforts to lasso a federal budget which is running wild. In fact, if all we accomplish before Congress adjourns later this month is the adoption of the budget summit agreement, next year's budget deficit is likely to be bigger than this year's.

Regrettably, at least \$5 billion of the summit package is flimflam: asset sales which will make deficits in the years to

come even bigger than they would otherwise have been.

Two weekends ago, I held town meetings in Camden and Bethany Beach. The theme that emerged from those meetings was clear: Congress and the White House can do better, and must do better.

I agree with the Delawareans that expressed that view to me at those town meetings. We can do more and we must. A 1988 deficit which is larger than the 1987 deficit is nothing to be proud of. And it certainly doesn't send the right message to skittish financial markets and a wobbly economy.

Over the past few decades, America has dug itself into a hole, a budget deficit hole. Denis Healey, the former Chancellor of the Exchequer in Great Britain has a "Theory of Holes" that he often talks about. It goes something like this: when you find yourself in a hole, stop

digging.

If we permit defense and domestic spending to grow in 1988 over 1987 levels, we dig our budget deficit hole a little deeper. If we allow pay raises for Congressmen, judges, executive branch officials, or other federal employees, both military or civilian, the hole gets deeper. And when we declare most entitlement programs, which comprise over 45 percent of the budget, off-limits for the purpose of developing a deficit reduction package, we get an even deeper hole.

The best way to get a true deficit reduction plan this year is to freeze both defense and non-defense spending at 1987 levels. Last Thursday, a small bipartisan group of House members, including myself, tried to do that. We lost on a relatively close vote.

I chose to support the long-term spending bill that passed the House.

## PICK THE PERFECT PRESENT AT

PIKE CREEK  
SHOPPING CENTER



ANDREW GALLAGHER JEWELERS  
"Quality With Style"  
Pike Creek Shopping Center  
994-0913  
Hrs: Mon. thru Fri. 10-8, Sat. 10-5

Fashionable  
JEWELRY  
for Christmas!

### DIAMONDS RINGS

See us & compare quality & prices before you make your gift selections.

### 14 Karat Gold Jewelry

Necklaces, bracelets, earrings, and tie tacks.



### FINGERTIP FANTASIES

Where You Will Find That  
Special Holiday Gift

#### Crafts & Classes

Collectables Custom Fabric  
Dollhouses Wallhangings  
Miniatures Stocking Stuffers

#### ELEGANT HANDMADE GIFTS

Pike Creek Shopping Center

998-0048

AMEX • WFS • MC • VISA • TELECHECK

#### 'RETAIL STORES'

- Nutcracker Sweet
- Paul De Ann's
- Pilnick's Shoes
- Radio Shack
- Buster Brown Shoe Boat
- Carousel Gifts
- Eckerd Drugs
- Valley Liquors
- Gallagher Jewelers
- Bradlees
- Wonderland Records
- Athletes Foot
- Scott
- True Value Hardware
- Pike Creek Bicycle Shop
- Flower & Gift Shop
- Frame Studio
- Tobacco Country
- Fingertip Fantasies

#### 'SERVICES'

- Haircut & Company
- Karen Optical
- Metropolitan Insurance
- Gilpin Realtor
- B. Gary Scott Realtor
- Holiday Travel
- Thompson's Cleaners
- Forever Tan
- Rosenbluth Travel
- Video Frequency

#### 'FOOD'

- Tempo's Ice Cream
- Country Maid Deli
- Valle Pizza
- Memories Restaurant
- Royal Exchange Restaurant
- Acme Markets

#### 'FINANCIAL'

- WFS
- Wilmington Trust

PIKE CREEK  
SHOPPING CENTER

Merchants Association  
Limestone Rd. across  
from: Goldey Beacom  
Wilmington, Delaware 19808



### SANTA'S SECRET, THEY NEED SUNGLASSES

CARRERA  
SUNCLOUD

Ray Ban  
Sunglasses

bolle



GREAT GIFT SURPRISES

### KAREN OPTICAL

Penn Mart Shopping Ctr.  
Basin Rd. & DuPont Blvd.  
New Castle, DE  
322-4658

Pike Creek Shopping Ctr.  
Limestone Rd.  
Wilmington, DE  
998-0551

Share the  
Christmas  
Spirit...

Many, Many Gift  
Items to Choose  
From.

5% Senior Citizen  
Discount On Non-Sale Items.

ANDRE  
CHAMPAGNE  
750 ml.

2 for \$5.00



DEWAR'S  
SCOTCH  
1.75 Liter

\$23.99



GORDON'S  
GIN  
1.75 Liter

\$12.99



JIM BEAM  
BOURBON  
1.75 Liter

\$13.99



your one stop liquor shop

### VALLEY LIQUORS

Pike Creek Valley Shopping Center  
995-7104



LOOK FOR OUR GIFT  
...CATALOGUE...

Where You'll Find  
GIFTS  
For The Whole Family  
At Prices You Can Afford

### Scott True Value Hardware

Pike Creek Shopping Center

998-0771

OPEN  
On Sat.  
9 AM-5 PM  
Until Christmas



# Ho, Ho, HOCKESSIN

SPONSORED BY YOUR LOCAL TOWN MERCHANTS



## Hockessin Flowers

"where love blooms...everyday"  
As your full service florist and gift shop...  
we make service and quality a priority

- fresh
- silk/dried
- creative designs
- hospital
- wedding/receptions
- corsages/proms
- funerals
- parties
- house plants
- gourmet/fruit baskets
- gourmet cheese trays
- balloons
- wicker
- ribbon
- floral-supplies
- gifts
- specialty items
- dish gardens
- wedding & party rentals

Major Credit  
Cards

Serving Hockessin and surrounding  
communities including Pennsylvania.  
With daily deliveries.



(302) 239-5800

Shoppes of Hockessin • Hockessin, DE 19707

## HAPPY HOLIDAYS

## Country Treasures

Shoppes of Hockessin  
Hockessin, Delaware  
302-239-7544

GIFTS &  
KEEPSAKES



COUNTRY CHRISTMAS MEMORIES



## The Stitching Place

Counted Cross Stitch & Custom Picture Framing

Xmas Ornaments, Towels & More To  
Stitch for Xmas  
Come Capture the Xmas Spirit.

Don't forget we offer a complete  
Custom picture framing service —  
Creative matting & large selection  
of frames-for all your framing needs!

HOURS:  
M-F 10:00-4:00  
THURS. 10:00-7:00  
SAT. 10:00-4:00  
239-2424



This season, Rita's Fashions  
brings dressing up closer to home.

Expert service and a  
wide selection can make  
this holiday fashion experi-  
ence enjoyable.



& Shoe Salon Shoppes of Hockessin  
Route 41, Lancaster Ave.  
302-239-6030



20% OFF SALE Selected Groups

HOLIDAY HOURS:  
Mon.-Fri. 10-8 PM  
Sat. 10-6 PM  
Sun. 12-4 PM

20% OFF  
All NATURALIZERS  
and LIFE STRIDE SHOES

CARRY LITE  
GOOSE DECOYS  
15% OFF!



NEW FALL & WINTER  
CLOTHING 15%  
by Remington, OFF  
Columbia & Woolrich  
WOMEN'S WOOLRICH  
COATS, SWEATERS, VESTS &  
TURTLENECKS

—WE CARRY—  
BEAR & JENNINGS  
ARCHERY  
REMINGTON GUNS  
THOMPSON CENTER  
BLACK POWDER  
GUNS and SUPPLIES

## DEAN'S PLACE

GUNS & SPORTING GOODS

for the CLASSIC SPORTSMAN, INC.

Rt. 41 • Hockessin, DE

(302) 239-5959

## HOLIDAY SAVINGS

•EXTRA VALUE- Packed with 6 pc.  
Screwdriver Bit Set.

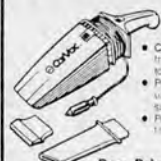
- Convenient, stores in  
trunk, always ready  
to use.
- 2 speeds - low for driving screws, high for drilling.
- Double gear reduction gives high torque.
- Recharges in 3 hours.
- Convenient built-in chuck key holder.
- Includes most commonly used Phillips and slotted bits.
- Full 2-year home use warranty.

Reg. \$57.95 SALE \$44.99



BLACK & DECKER®

## \$5 REBATE



#9510 CarVac  
12 Volt Vacuum  
• Convenient, stores in  
trunk, always ready  
to use.  
• Powerful motor  
unique design  
superior performance  
• Permanent, washable  
filter bag.

Reg. Price 28.95  
Sale Price 22.99  
Less Rebate 5.00  
Your Price 17.99

BLACK & DECKER®

## 10" Rotary Mitre Saw With FREE Piranha™ Blade

- FREE INSIDE —  
10" 60 Tooth Piranha  
Carbide Tipped Blade.
- Powerful 2 HP motor  
for efficient operation.
- Accurate cast and  
machined mitre scale  
for easy reading.
- Compact and  
lightweight lock holds  
motor down for easy  
carrying.
- Adjustable dust  
collector chute.
- Full 1-year warranty.



BLACK & DECKER®

Reg. \$263.00 NOW \$174.77

Store Hours:  
7 AM TO 5:30 PM - FRI.  
8 AM TO 4:30 PM - SAT.  
OLD LANCASTER PIKE  
HOCKESSIN, DEL.  
239-5233

HOCKESSIN  
SERVISTAR  
HOME CENTER  
IN HOCKESSIN CORNER

GIFTS  
GALORE  
FOR THE  
HOLIDAYS

## GENERAL TIRE

# Great Tires Great Deals

Wynn's  
Service Centers

## ALL SEASON PREMIUM RADIAL

Ameri★Sport®

\$29.95

155SR12

PRICES GOOD THRU JAN. 1ST

## ALL SEASON IMPORT RADIAL AMERI★SPORT®



\$29.95  
155SR12

- Two strong steel belts
- Buton block Eurostyle tread
- Fits most imports and compacts

SIZE	BLK	SW	BLK
P155/80R13	37.95	175SR14	45.95
P155/80R13	40.95	185SR14	48.95
P175/70R13	44.95	185/70SR14	50.95
P185/70SR13	44.95	195/70SR14	52.95
		185/70SR13	44.95

## ALL SEASON PREMIUM RADIAL AMERI★WAY XT®



\$43.95  
P155/80R13

SIZE	PRICE
P165/80R13	\$51.95
P175/80R13	\$52.95
P185/80R13	\$55.95
P185/70R14	\$56.95
P195/70R14	\$60.95
P205/70R14	\$64.95
P205/75R14	\$66.95
P215/75R14	\$67.95
P205/75R15	\$68.95
P215/75R15	\$73.95
P225/75R15	\$74.95
P235/75R15	\$79.95

## ALL SEASON HIGH PERFORMANCE RADIAL XP 2000®



\$63.95  
P175/70R13

• "T" rated for speeds up to 118 MPH

• Mud and snow traction rated

• Extra wide tread for sports car handling!

SIZE	PRICE
P185/70R13	\$65.95
P185/70R13	\$66.95
P185/70R14	\$70.95
P195/70R14	\$74.95
P205/70R14	\$78.95
P215/70R14	\$82.95
P225/70R14	\$84.95
P225/70R15	\$87.95
P235/70R15	\$89.95
P245/60R14	\$87.95
P245/60R14	\$89.95
P235/60R15	\$89.95
P245/60R15	\$92.95
P275/60R15	\$103.95

Wynn's

Service Centers

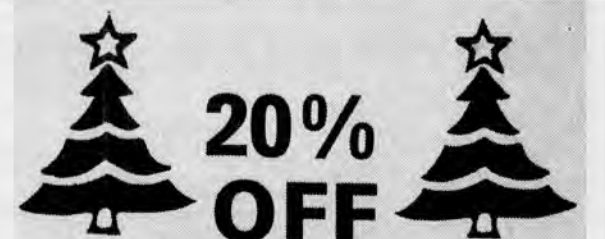
## YOUR GENERAL TIRE DEALERS

## SERVICE CENTERS

Mobil  
HOCKESSIN  
Lancaster Pike across  
from Save-A-Cent  
239-5205

Look for our  
newest location in  
Brandywine Hundred  
478-0441  
Brandywine Hundred  
Foulk & Silverside Rds.

Mobil  
NEWARK  
Kirkwood Hwy. across from  
Lum's Family Rest.  
366-0701  
GAS ISLAND OPEN 24 HRS



20%  
OFF

## CUT TREES

WITH THIS COUPON

Blue Spruce, Douglas Fir,  
Balsam Fir, Scotch Pine

CASH AND CARRY

—EXPIRES 12/18/87

499 Yorklyn Road, Hockessin  
239-2323

Concord  
Nurseries



**MISSING  
PAGE(S)**



**MISSING  
ISSUE(S)**

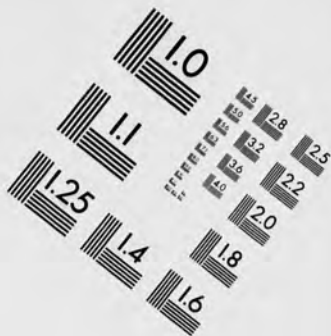
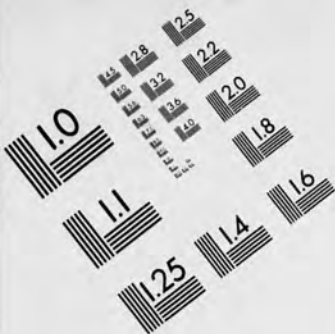




**AIM**

**Association for Information and Image Management**

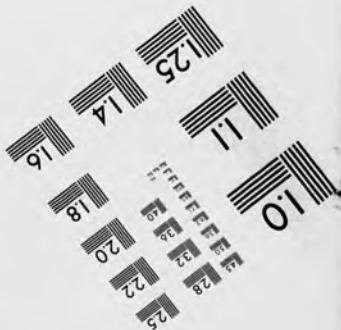
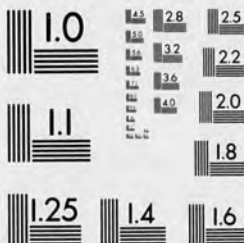
1100 Wayne Avenue, Suite 1100  
Silver Spring, Maryland 20910  
301/587-8202



Centimeter

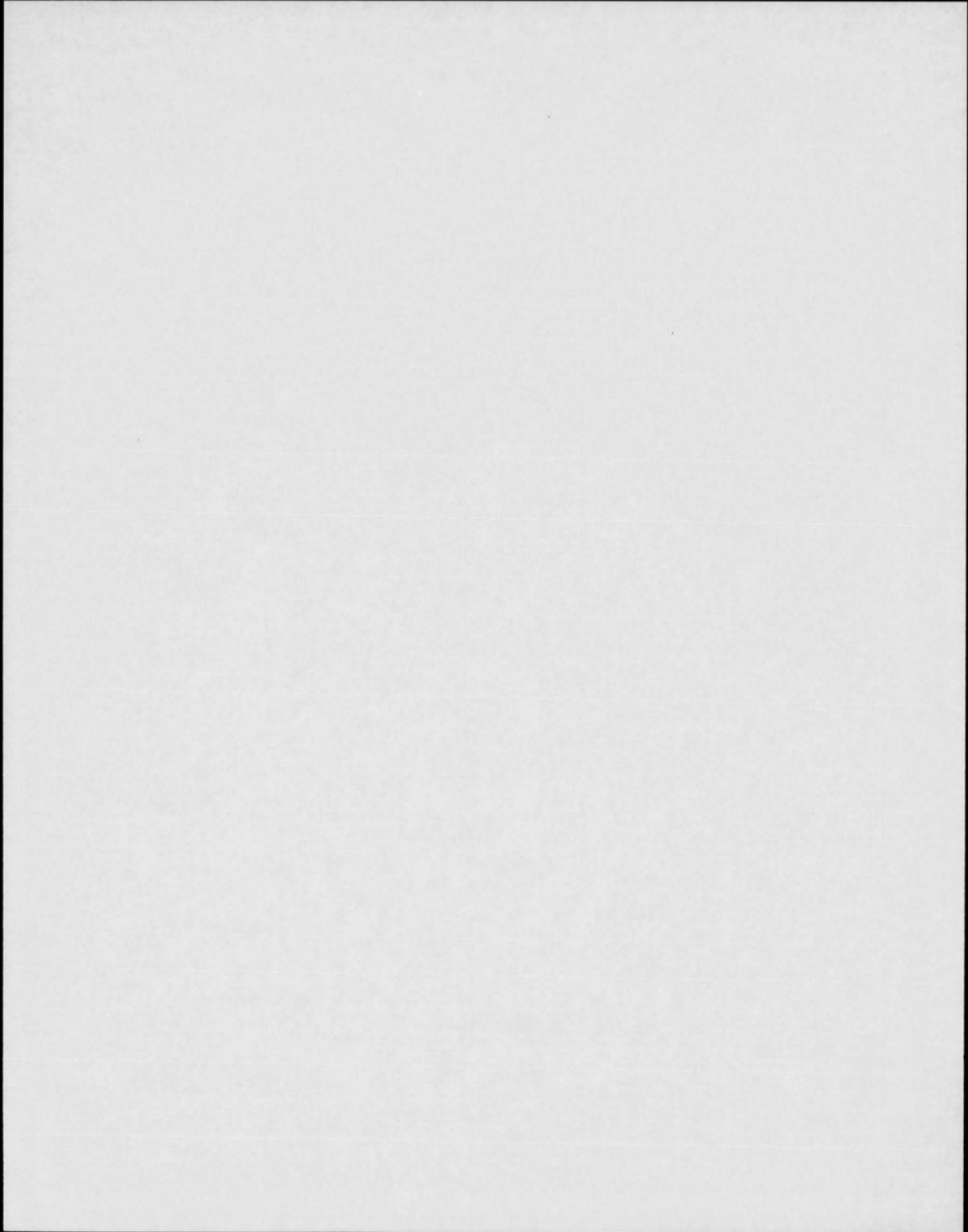


Inches



MANUFACTURED TO AIM STANDARDS  
BY APPLIED IMAGE, INC.







**CONTINUED  
ON  
NEXT REEL**



**END OF REEL  
PLEASE  
REWIND**