

# NEWARK POST

❖ Greater Newark's ❖

99th Year, 46th Issue

© 2008

Newark, Del.

## UP FRONT

### Newark Post Web site offers expanded coverage

By **MARTY VALANIA**

MVALANIA@CHESPUB.COM

Long-time University of Delaware football coach and local legend Tubby Raymond recently challenged current coach K.C. Keeler — who's been successful in his own right — on his transfer philosophy.

It was a lively discussion and made for a great story.

Unfortunately for us, it was Thanksgiving week and we had already sent the paper to be printed when the challenge occurred at last Monday's season-ending press conference.

Our University of Delaware sports reporter Tom Tomashek was covering the press conference and wrote a story that never had a chance to get in our print edition.

Fortunately for us, there is the Internet.

Despite never being printed, the article turned out to be our most read story of the week by a landslide as people flocked to our newarkpostonline.com Web site to read it.

Now, I know the Internet is not a new revelation, but judging from comments we sometimes hear from our print readers, there are a good amount of you out there that haven't familiarized yourself with our Web site.

We're hoping that more of you will take advantage of our online content as well as our print edition.

This is the time we live in and — along with most publications in the world — this is the future of our newspaper.

It's obvious that many of you out there have found that you want to read your news

See **UPFRONT, 23** ▶



Valania

## Winterfest

begins month of special events in Newark

By **SCOTT GOSS**

POSTNEWS@CHESPUB.COM

The holiday season officially begins on Main Street this Friday when Santa Claus arrives to light the holiday tree and the annual Reindeer Run starts to benefit the Special Olympics.

Both events are sure to be a highlight of this year's Winterfest community celebration.

The fun begins on the corner of East Main and Academy streets at 6 p.m. when visitors are invited to roast chestnuts, take rides in a horse-drawn wagon, enjoy an ice carving demonstration, listen to live music. Downtown parking will be free throughout the event.

The Shue-Medill Middle School's Concert Choir will be the first to perform on stage at the Academy Building, followed by Rachel Snyder and Mariah Frost.

Santa's arrival for the tree lighting and the Reindeer Run & Romp 5k and 3k races are both scheduled to start at 6:30 p.m.

After the tree lighting, Santa promises to hang around for a few hours for photographs

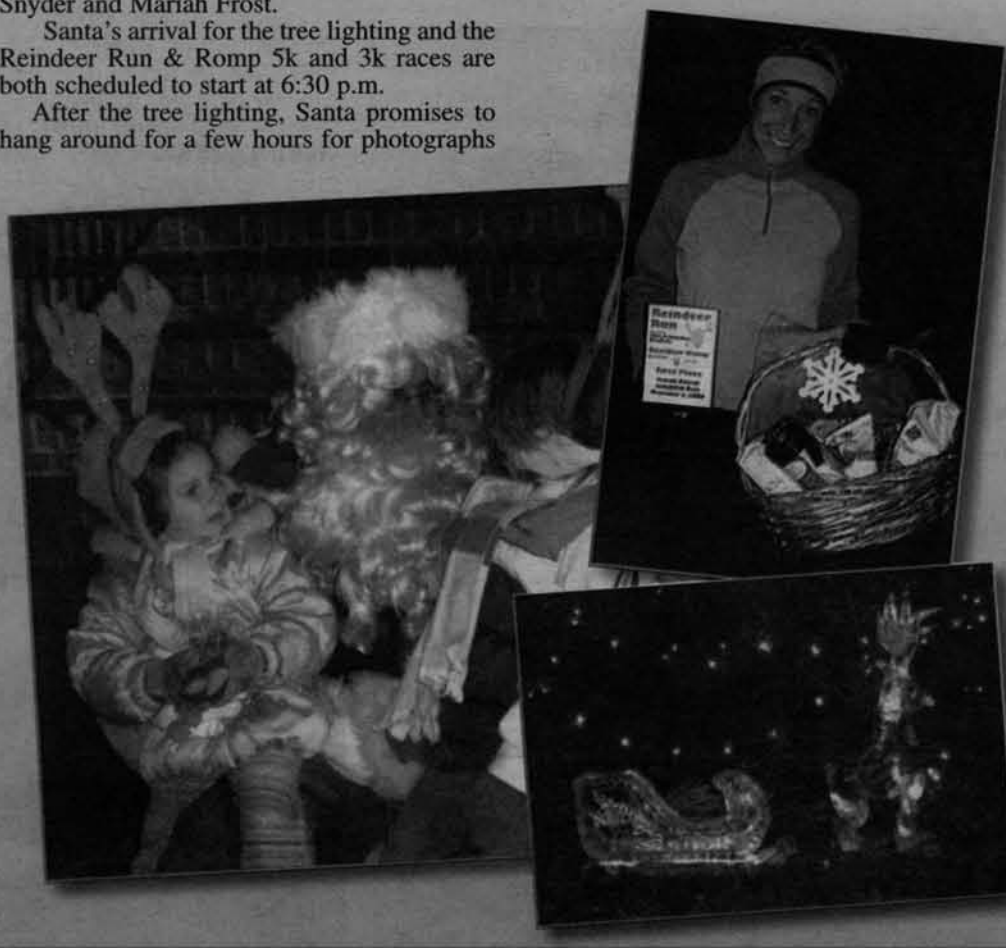
and the all-important recording of Christmas wish lists.

Meanwhile, the third annual Reindeer Run and Romp is expected to draw as many as 400 participants.

Runners in the 5k will race will trek from Academy Street to the James F. Hall Trail, while participants in the 3k will head from Academy Street to the University of Delaware's green.

As an extra attraction, children under the age of 12 are expected to participate in the

See **WINTERFEST, 17** ▶



### Five new officers unlikely to make Newark budget

By **SCOTT GOSS**

POSTNEWS@CHESPUB.COM

It's looking less and less likely that Newark Police Chief Paul Tiernan will get the five new officers he requested in the city's proposed budget for 2009.

Three more officers might be a bit more doable, however.

A majority of Newark City Council members said this week that they anticipate trimming Tiernan's \$300,000 request for five new officers, in an effort to reduce the 12-cent property tax also proposed as a part of the city's spending plan for next year.

"I think it will end up being less than five, but more than one or two," City Councilman Jerry Clifton said on Tuesday. "We owe it to the community and we owe it to the department."

Although Newark crime statistics show an overall decline in calls for service and certain major crimes, several incidents of violent muggings and robberies this fall have alarmed members of the community, many of whom have urged city council to approve Tiernan's request.

See **COUNCIL, 9** ▶

### New head named for Delaware's charter network

Pa. resident appointed executive director

By **MARY E. PETZAK**

MPETZAK@CHESPUB.COM

The Delaware Charter Schools Network recently announced that Susan Harris of Landenberg, Pa., would take over as its new executive director.

Harris is a former assistant executive director of the Pennsylvania Coalition of Charter Schools, which serves 120 charter schools in Keystone State.

The Delaware Charter Schools Network is a nonprofit advocacy and lobbying group that represents all 18 independent charter schools in the First State.

According to information released by the network, Harris has been involved in the charter school movement for many years and possesses experience in public relations, philanthropy, advocacy and edu-

See **SCHOOLS, 13** ▶

IN SPORTS: Newark High boys hoops gets new coach • St. Mark's wrestling team opens Saturday, page 19.



## Can we help?

**Offices:** The paper's offices are located conveniently in Suite 109, Pomeroy Station, 218 E. Main St., Newark, DE 19711. Office hours are 8:30 a.m. to 5 p.m. weekdays.

**Phone:** (302) 737-0724

**Facsimile:** (302) 737-9019

**E-mail:** postnews@chespub.com

**To subscribe:** To begin a convenient home-delivery subscription, call 1-800-220-3311.

**To place a classified ad:** Call 1-800-220-3311.

**To place a display ad:** Call 737-0724.

**THE STAFF** of the *Newark Post* is eager to assist readers and advertisers. Reporters, writers, editors and salespeople can be contacted as listed:

**Marty Valania** is the General Manager of the Newark Post. He sets policies and manages all departments in the Newark office. Call him at **737-0724**.

**Scott Goss** is the news editor. He leads the day-to-day operation of the newsroom. Call him at **737-0724**.

**Mary E. Petzak** is a staff reporter and specializes in education coverage. Reach her at **737-0724**.

**Other contributing writers** include Ruth Kelly, Alfred Gruber, Elbert Chance, Marvin Hummel and Mark Sisk. Leave messages for them at **737-0724**.

**Sondra McKeever** is our Office Manager/Editorial Assistant. She can be reached at **737-0724**.

**Novalee Woodruff** is our Graphic Designer. She handles the advertisement designs.

**Jonathan Waddell** is our Visual Design Director. He designs the pages.

**Ed Hoffman** is the Newark Post's advertising director and manages the local sales team. He can be reached at **1-800-220-3311**.

**Jim Galoff** is the advertising sales manager. He handles accounts in the New Castle area and is an automotive account specialist. Call him at **1-302-737-0724**.

**Betty Jo Trexler** sells real estate advertising. She can be reached by calling **1-800-220-3311**, ext. 3090.

**Nancy Beaudet and Mike Adams** sell ads in the downtown Newark area. They can be reached by calling **1-302-737-0724**.

Our circulation manager is **Mary Ferguson**. For information regarding subscriptions, call **1-800-220-3311**.

The Newark Post is published Friday by Chesapeake Publishing & Printing. News and local sales offices are located in Pomeroy Station, Suite 109, 218 E. Main St., Newark, DE 19711. All advertising and news are accepted and printed only at the sole discretion of the publisher. The Newark Post is a member of the Maryland-Delaware-D.C. Press Association, Suburban Newspapers of America and the National Newspaper Association.

**POSTMASTER:** Send address changes to: Newark Post, Suite 109, 218 E. Main Street, Newark, DE 19711. Periodicals postage paid at Newark, Del., and additional offices. (USPS #6465) Known office of publication 218 E. Main Street, Newark, DE 19711.

■ *Police Blotter* is compiled each week from the files of the Newark Police Department, New Castle County Police and the Delaware State Police.

### Thefts and Robberies

A 46-year-old Newark man told police his ex-girlfriend used his credit card to make two dozen unauthorized purchases, including a \$23 pizza order with a \$21 tip, between 11 p.m. on Sept. 21 and midnight on Sept. 24.

A 32-year-old Newark woman told police someone stole two UPS packages, containing items valued at \$280, from outside of her residence in the Villa Beaumont neighborhood on Welsh Tract Road between 2:27 p.m. on Nov. 7 and 4:16 p.m. on Nov. 24.

Police charged a 15-year Newark High School student with two counts of theft at 1:57 p.m. on Nov. 21, after he reportedly was captured on video stealing two cellphones from the school's upper gym.

Police charged brothers Richard, 25, and Ronald Gibson, 31, with shoplifting and conspiracy at 3:38 p.m. on Nov. 21, after apprehending them on a DART bus with more than \$100 worth of items reported stole from Peddlers Pit Stop in the 600 block of South College Avenue.

The manager of Super Fresh in the 400 block of New London Road told police two white men in their 20s stole \$97 worth of razor blades and Tylenol at about 11:05 a.m. on Nov. 23.

Police charged 39-year-old Cory Hitchens of Newark with

## Robber hits Newark newsstand on Thanksgiving

Man told Fairfield News clerk he had a gun

By SCOTT GOSS

POSTNEWS@CHESPUB.COM

A man claiming to have a gun demanded a Newark newsstand clerk hand over money on Thanksgiving morning, police said Monday.

According to Newark Police Lt. Brian Henry, the clerk told officers that a clean-shaven white man in his 30s came into the Fairfield News in the Fairfield Shopping

Center at about 9:10 a.m. on Nov. 27.

The man reportedly told the 51-year-old female clerk that he was looking for "the weed magazines," referring to publications that focus on marijuana.

The man perused the magazines until another customer left the store and then approached the clerk, implied he had a gun in his pocket and demanded cash.

The clerk told police the man took money from the cash register and then fled to a red, four-door Nissan with a box-like shape before heading

north on New London Road.

The clerk, who was unharmed, locked herself in the store and called police.

The suspect is described as being about 5 feet 6 inches tall, weighing about 175 to 200 pounds and was last seen wearing a dark-colored, zip-up jacket.

Anyone with information about the robbery is asked to contact Newark Police Detective Greg D'Elia at 366-7110 ext. 132 or by e-mailing Greg.Delia@cj.state.de.us.

Information also can be left anonymously at 1-800-TIP-3333.

shoplifting at 2:50 p.m. on Nov. 26, after he allegedly attempted to steal \$133 worth of food and soap products from Pathmark in the College Square Shopping Center.

An unknown suspect broke into a home in the 100 block of East Cleveland Avenue and stole items collectively valued at \$2,080 between 10 p.m. on Nov. 27 and 4:15 p.m. on Nov. 30.

Police charged 61-year-old Newark resident Leroy Hand with shoplifting at 11:27 a.m. on Nov. 28, after he allegedly tried to steal \$82 worth of food and hygiene products from Pathmark in the College Square Shopping Center.

A 29-year-old Wilmington resident told police someone stole her debit card while she was at Kildare's Irish Pub in the Main Street Galleria between 11 p.m. on Nov. 28 and 1:30 a.m. on Nov. 29.

She reported two unauthorized purchases totaling about \$330.

### Fights and Assaults

Police charged two 15-year-old Newark High School students with disorderly conduct at 11:42 a.m. on Nov. 19, after they engaged in a fistfight at the school. One of the students also was charged with underage consumption.

Three people told police two men assaulted them at Trader's Alley in the 100 block of East Main Street and then caused an estimated \$550 in damages to their vehicle and a digital camera at about 11:25 p.m. on Nov. 25.

Police charged 27-year-old Newark resident Michael P. Schmidt with third-degree assault following an incident in the unit block of East Main Street at 1:53 a.m. on Nov. 26.

Police charged Bryan A. Ondich, 21, of Elsmere, Del. with offensive touching at 9:30 p.m. on Nov. 28, following an incident in the unit block of Welsh Tract Road.

### Vehicles Targeted

An unknown suspect broke

a 1999 Toyota Camry's side mirror while it was parked in the 200 block of Orchard Road between Nov. 21 and Nov. 22. Damages were estimated at \$200.

An unknown suspect broke into a Chevrolet Equinox parked in the 200 block of Murray Road and stole items collectively valued at \$1,476 between 10 p.m. on Nov. 23 and 11:30 a.m. on Nov. 24. Damages were estimated at \$100.

An unknown suspect entered an unlocked Honda Accord in the 200 block of Beverly Road and stole items collectively valued at \$267 between 6 p.m. and 9:45 p.m. on Nov. 25.

An unknown suspect spray painted a 1992 Volvo station wagon parked in the 200 block of East Main Street between 2:30 p.m. and 3:35 p.m. on Nov. 26. Damages were estimated at \$500.

### Other Incidents

An unknown suspect used a firecracker to cause \$21 in damages to a mailbox in the unit block of Shull Drive between 6 p.m. on Nov. 21 and 10:30 a.m. on Nov. 24.

See **BLOTTER, 14** ►



Best time to **SELL**  
Your **GOLD**

Class Rings, Wedding Bands, Chains, Bracelets, Old Mountings, Charms, "Old Broken Jewelry"

**CASH**  
**PAID ON THE SPOT!**

Bring This Coupon With You &  
Receive An Additional **10% CASH**  
410 Suburban Plaza  
Elkton Road  
Newark, DE 19711 **302-368-3380**

Cash  
for the  
holidays



# Frat house in UD student's death cited by city

Property owner could be fined for Sigma Alpha Mu house

By SCOTT GOSS

POSTNEWS@CHES PUB.COM

The owner of a rental property on Annabelle Street is believed to be the first to face legal consequences stemming from the death of an 18-year-old University of Delaware freshman last month.

Police believe New Jersey-native Brett Griffin died from alcohol poisoning after attending an official function of the Sigma Alpha Mu fraternity in an apartment building at 28 Annabelle Street on Nov. 9.

No criminal charges have been filed in Griffin's death as

police await the results of a toxicology test.

But, as a result of the investigation, city officials became aware that Sigma Alpha Mu had been using a rental property at 3 Annabelle Street as their official fraternity house.

The fraternity listed the property as their official off-campus housing on their Web site, which had been hosted by the university until it was taken down after Griffin's death.

Griffin had been pledging the fraternity at the time of his death, according to police.

Thomas Sciulli, the city's director of building, reported in a weekly department report published on Nov. 26 that he had determined the building's use as a fraternity house constituted a code violation.

According to city officials, Sciulli issued a notice of seven

code violations found during a recent inspection to owners Wollabelle LLC, which purchased the three-bedroom rental property in 2005.

The violations include using the property as a fraternity house, broken windows and doors, a lack of portable fire extinguishers and insufficient smoke detectors.

A follow-up inspection is scheduled for Dec. 19 and Wollabelle LLC reportedly has 30 days to obtain a new certificate of occupancy.

Messages left with the listed contact person for Wollabelle LLC had not been returned as of Wednesday.

University of Delaware spokesman John Brennan said the school does have jurisdiction over the living arrangements made by Greek organizations outside of the two Greek houses

on university property and the five Greek houses in Newark that were grandfathered when the city outlawed them earlier in the decade.

"Any Greek housing situation other than that is an unofficial arrangement made by groups of friends who choose to live together," he said.



This rental unit at Annabelle & Margaret streets was being used as a frat house, according to the city building department.

## Burglars strike two Main Street businesses

Bike Line and East End hit early Saturday

By SCOTT GOSS

POSTNEWS@CHES PUB.COM

Newark Police are searching for a pair of smash-and-grab burglars who struck the East End Café and Bike Line on East Main Street early on Saturday morning.

Officers first learned of the break-ins after receiving an automatic alarm notice from Bike Line at 5:09 a.m.

There, they found a broken window and an open front door, as well as price tags, chain guards and an abandoned BMX-style bicycle in the parking lot.

While canvassing the area, officers also found a second abandoned BMX-style bicycle outside of Gamble's Newark Florist on the other side of the Newark Shopping Center.

Along with the second bike were two liquor bottles with tell-tale pouring spouts. A third bottle was later found in Delaware National Bank parking lot across the street from the East End.

Bike Line's management later reported a black and a gray 2009 Haro F-3 BMX-style bicycle, together worth about \$660, were missing from the store.

Investigators said they believe the suspects first pried open a window at the East End Café and left with four liquor bottles, collectively valued at about \$100, sometime after 2:50 a.m. on Saturday morning.

The suspects then may have used to the booze to boost their courage for a second break-in at Bike Line, which is less than a block from the East End.

"That's the most logical order of events, based on where the evidence was recovered," said Newark Police Lt. Brian Henry.



Police say burglars made off with two bicycles worth \$660 and four bottles of liquor.

Henry said investigators believe the recovered bicycles might have been used by the thieves to get to the crime scene and then were abandoned after the burglars upgraded with stolen goods.

A witness did report seeing two men between the ages of 16 and 20 in the area of Gamble's Florist during the timeframe in which the robberies occurred, police said.

The witness told police he saw the men, one of whom was white and was wearing a large puffy black coat, get into a small beige or white car before driving away at a high rate of speed.

Management at Bike Line was not available for comment

on Monday, but East End Café manager D.J. Lawler said such crimes are uncommon on Main Street.

"I've been working here for 12 years and this is the first time we've had a break-in," he said. "For right now all we know that was stolen were the liquor bottles, but we won't know if anything else is missing until we do our inventory this week."

Anyone with information about the break-ins is asked to contact Newark Police Detective Fred Nelson at 366-7110 ext. 136 or by e-mailing frederick.nelson@nj.state.de.us.

Information also can be left anonymously at 1-800-TIP-3333.

## Fibromyalgia?

**NEWARK** - A new free report has recently been released that reveals the "untold story" behind fibromyalgia pain. Fibromyalgia misdiagnosis and mistreatment is rampant and leads to countless years of unnecessary suffering. This free report reveals a natural procedure that has given fibromyalgia sufferers their "lives back" - with "miraculous" results for many. If you suffer from fibromyalgia, you need this no B.S., "no gimmicks" free report that is giving hope to fibromyalgia sufferers everywhere. For your free copy, call the toll-free, 24 hour recorded message at 1-888-895-7481.

ADVERTISEMENT

## Lions Club Christmas tree sale

For 53 years, the Brookside Lions Club has been selling Christmas trees, with the profits going back to help the community.

According to Lions Club President Lloyd King, the profits are used to support eye exams and glasses for those in need; contributions to the Eye Bank of Delaware Valley, which provides cornea transplants; eye testing equipment for local schools; leader dogs for the blind; Special Olympics, and other community organizations that assist with welfare needs and holiday baskets. In addition, wheelchairs, walkers, crutches and canes are

provided to anyone in need of such medical equipment.

Unloading of the first half of the trees took place on Nov. 29. The second half of the trees will be received on Dec. 6, at which time, the University of Delaware's Sigma Kappa Sorority will help in the unloading.

The lot on Chestnut Hill Road across from the Chestnut Hill Shopping Center will be open for tree sales from noon to 9 p.m. from Monday through Friday and from 9 a.m. to 9 p.m. on Saturdays and Sundays.

For more information, contact Lloyd King at 834-7781.



## DENTAL ASSOCIATES OF DELAWARE

DENTISTRY WITH DISTINCTION

We Process your Insurance and help you Maximize your Dental Benefits!

NEW PATIENTS ALWAYS WELCOME.

Four Convenient Office Locations!

BRANDYWINE OFFICE - 302.477.4900  
MIDDLETOWN OFFICE - 302.378.8600  
GREENVILLE OFFICE - 302.656.8219  
HOCKESSIN OFFICE - 239.5917  
WWW.DELAWARESMILES.COM



# In Our Schools

EDUCATION NEWS FOR NEWARK FROM LOCAL SCHOOLS

## NOTE PAD

### School board meeting

The Christina School District will hold its regular monthly school board meeting on Dec. 9, starting at 7:30 p.m. in the Stubbs School, 1100 North Pine St., Wilmington. The fiscal 2009 final budget will be among items on the agenda that can be viewed at [www.Christina.k12.de.us](http://www.Christina.k12.de.us).

### Winternational Hunger Project

Downes Elementary School in Newark will present "The Winternational Hunger Project" on Dec. 10, at 6:30 p.m. in the school cafeteria. The program will feature singing groups, oral presentations and a performance by this year's Shakin' Sharks steel band with original instrumental compositions based on the music of China and Asia. A cultural exhibition will feature displays and artwork based on the world hunger theme.

Attendees are asked to bring a canned food/non-perishable item for the Downes' food drive. If you know anyone in the community that could benefit from food donations, please contact Nurse Laudorn at Downes.

### Federal tax deduction

The Emergency Economic Stabilization Act of 2008 reinstated the Educator Expense deduction, which had expired at the end of last year. The deduction has been reinstated for tax years 2008 and 2009. Expenses incurred at any time during 2008 may qualify for the deduction. Educators will be able to deduct up to \$250 of such expenses. This deduction is available whether or not the taxpayer itemizes deductions on Schedule A.

Qualified expenses are non-reimbursed expenses paid or incurred for books, supplies, computer equipment including related software and services, other equipment, and supplementary materials that are used in the classroom. The IRS suggests that educators keep records of qualifying expenses, noting the date, amount and purpose of each purchase. This will help prevent a missed deduction at tax time.

## Wilson students participating in C2S2 Inner Circle

Students at Wilson Elementary School in Newark are participating in a Climate Change Student Summit (C2S2) Inner Circle. Participating students were selected by a committee of teachers after volunteering for the project.

Wilson fifth graders participating in the Inner Circle include Karl Stomberg, Davina Wooley, Maitreyi Dave, Aaron Moriak, Alexandra Brevoort, Lindsey Dillon, Jacob Tims, Hannah Bartholomew, Angel Guerrero, Bryan Spivey, Emilee Graybeal, Maddison Tracy, Jack Kelly and Blaise Glowiak.

"I'm very excited to let you know about [this project]," said Julia Dooley, Wilson Elementary Enrichment Services Teacher and ANDRILL Arise Educator 2007. "I visited each of the fifth grade classrooms a few weeks ago, exciting them with tales of my adventures in Antarctica last year."

Wilson's C2S2 Inner Circle is conducting climate research using classroom activities created by ANDRILL (Antarctic Geological Drilling) and thermochrons, electronic devices that provide continuous temperature and time records, supplied by NASA.

The students participate in weekly video teleconferences with scientists at work in Antarctica and with classrooms around the globe. "We hope to present findings to an audience" Dooley explained. "Our group meets on Tuesdays and Wednesdays during the fifth grade recess and lunch time."



Wilson Elementary School's C2S2 Inner Circle is conducting climate research using classroom activities created by ANDRILL (Antarctic Geological Drilling) and Thermochrons supplied by NASA.

By joining the Inner Circle, the students are following Shakira Petit, an educator in ARISE (ANDRILL Research Immersion for Science Educators), to the coldest place on earth as she becomes part of the Off-Shore New Harbor science expedition to Antarctica from October-December.

"Her experiences will mirror my experiences last year," Dooley said, "as part of ANDRILL's Mackay Sea Valley Seismic Survey team."

ANDRILL is a multinational collaboration comprised of more than 200 scientists, students and educators from five nations (Germany, Italy, New Zealand, the United Kingdom and the United States) to recover stratigraphic records from the Antarctic margin.

The chief objective is to drill back in time to recover a history of paleoenvironmental changes that will guide our understanding of how fast, how large, and how frequent were glacial and interglacial changes in the Antarctic region. Future scenarios of global warming require guidance and constraint from past history that will reveal potential timing, frequency and site of future changes.



In weekly video teleconferences with scientists at work in Antarctica, the students are following ARISE educator Shakira Petit to the coldest place on earth.

## Learn More

[www.andrill.org](http://www.andrill.org)

Julia Dooley's 2007 blog: [www.andrill.org/iceberg/blogs/2007/Julia/index.html](http://www.andrill.org/iceberg/blogs/2007/Julia/index.html)

Inner Circle site: [web.me.com/lhuffman/Project\\_Circle/Welcome\\_.html](http://web.me.com/lhuffman/Project_Circle/Welcome_.html)

Off-Shore New Harbor site: [qcpages.qc.cuny.edu/offshore\\_new\\_harbor/index.htm](http://qcpages.qc.cuny.edu/offshore_new_harbor/index.htm)

## NEED A LAWYER?

Offering affordable legal services at  
1400 Peoples Plaza, Suite 121

EXPERIENCE COUNTS  
Over 25 years in practice

- Auto Accidents
- Divorce & Custody
- PFA
- Work Injuries
- Bankruptcy
- Criminal Law/DUI

Our firm's goal is to provide affordable legal services to our clients. We utilize a team approach combining the efforts of experienced paralegals and attorneys, coupled with aggressive, affordable representation, maximizing your recovery, protecting your rights, to provide the most effective personal legal services available.



**Rahaim & Saints**

2055 Limestone Road  
Suite 211  
302-892-9200

ATTORNEYS AT LAW  
302-832-1800  
1400 Peoples Plaza  
Suite 121  
Bear, Delaware

## got scrap?

**ELKTON RECYCLING**

Top Dollar Paid For Scrap! "Cash for all types of metals and cars!"

We buy batteries, copper, brass,  
aluminum, stainless & electric motors!

We buy old farm equipment!

We buy complete junk vehicles!

UP TO \$350

**410-392-2980**

53 Dogwood Road, Elkton, MD  
(Corner of Blueball & Dogwood Road)





# St. Mark's student attends Bosnia Youth Leadership Program

Christopher Shaffer, a sophomore at St. Mark's High School, was one of five Delaware teens that traveled to Bosnia-Herzegovina as a participant in the 4-H/Bosnia Youth Leadership Program. Shaffer is the son of Denis and Brenda Shaffer of Middletown.



Shaffer

In preparation for the trip, the teens had to complete assigned readings, book reports and projects. "The book I had to read, 'To End a War,' helped me better understand the issues in Bosnia," said Shaffer.

During the two-week trip, Shaffer and the other teens visited Banja Luka, Tuzla, Livno and Tomislavgrad. At each destination, they met with civic leaders and elected officials and made presentations at schools and community centers.

The group was guided by 4-H educator Jordan Ashby, 4-H educator Mark Manno, and volunteer Larry Shaffer, Shaffer's grandfather who is also known as the "American grandfather" of the many Bosnian teens who have visited Delaware during the past three years.

The program, sponsored by the U.S. Department of State and the U.S. Embassy in Sarajevo, is administered by

Delaware 4-H at the University of Delaware. During the nine-year history of the program, Bosnian teens and teachers have traveled to the United States, staying with host families and participating in a variety of educational programs. This was the second time that American teens visited Bosnia through the program. Upon returning to the United States, Shaffer is required to give pre-

sentations about his experience to 4-H audiences, as well as to civic and school groups.

Established in 1969, St. Mark's is a Catholic, college-preparatory, co-ed high school located in Wilmington, Del. It offers the most comprehensive Advanced Placement program in the state and has 97 percent of its graduates go on to college. St. Mark's provides a broad-based curriculum that

includes music, drama and art and emphasizes mastery of written communications. The school also offers a comprehensive competitive sports program and gives students the

opportunity to explore their interests, gain confidence in their abilities and provide service to the community through a wide variety of extracurricular clubs and activities.

Follow me to  
great rates on  
car insurance.



There's a GEICO office in your neighborhood! With low down payments and convenient payment plans, saving on auto and motorcycle insurance is easy.

**GEICO**  
Local Office

AUTO • HOME • RENTERS • MOTORCYCLE • BOAT

Call Now!  
410-620-0022  
M-F 9-6, Sat 9-1

Home, renters, and boat coverages are written through non-affiliated insurance companies and are secured through Insurance Counselors Inc., the GEICO Property Agency. Some discounts, coverages, payment plans, and features are not available in all states or in all GEICO companies. © 2007 GEICO. The GEICO gecko image © GEICO 1999-2007

**GrassRoots**

Extraordinary items for unique people

**Incredible Sale!**  
**50% OFF**  
the lowest ticketed price of  
all clothes and shoes

**20% OFF**  
All boxed holiday cards  
See store for details

Now through Sunday, Dec. 7th

Main Street, Newark (302) 453-9751  
Old Lancaster Pk., Hockessin (302) 489-2501  
Foulk Road, Wilmington (302) 529-0553  
Trolley Square, Wilmington (302) 777-2050



**CB JOE**  
TELEVISION  
& APPLIANCES  
Delaware's **LOWEST PRICE**  
OR We'll Change It!  
348 Churchmans's Rd. (Rt. 58E)  
I-95 Exit 4B • New Castle, DE  
302-322-7600 [www.cbjoetv.com](http://www.cbjoetv.com) 800-225-6388

VALENTINO  
Candie's  
COACH  
EST. 1941  
COSTA DEL MAR  
GUCCI  
EST. 1921  
NAUTICA

**Dr. Yvonne Kneisley**  
OPTOMETRIST

- Clear Explanations of Procedures
- Professional & Caring Staff
- Most Insurances & HMO's Accepted

**KNEISLEY**  
EYE CARE (302)224-3000  
The Main Street Galleria  
45 East Main Street, Suite 201 • Newark  
[www.kneisleyeyecare.optometry.net](http://www.kneisleyeyecare.optometry.net)

Eye Examinations • Contact Lenses • Fashion Eyewear • Treatment of Ocular Diseases

**Peoples Plaza Christmas Celebration!**

Saturday, Dec. 6, 10 am to 4 pm  
Inside the "North Pole" (Across from the movie theatre)  
**Santa & Mrs. Claus arrive at 10 am**

**FUN ACTIVITIES ALL DAY INCLUDING:**  
Live interactive Radio Disney-hosted Show 12:30-2 pm  
Pictures with Santa and Mrs. Claus, Rudolf and Frosty  
Remote-control Car Races • Puppet Shows Face Painting • Story-telling  
Trolley Rides • Horse and Carriage Rides

**REFRESHMENTS**  
Performances by Caravel Academy Carolers and New Castle Dance Academy

**Bring this coupon for FREE Christmas ornament!**

299530-np120508



# Opinion

EDITORIALS COLUMNS • PAGES FROM THE PAST • LETTERS

POST COLUMNIST

## India terror attacks and the loss of Professor Villamarin

By MARK SISK

NEWARK POST COLUMNIST

Some years ago, on my watch as assistant city solicitor, the Newark City Council was presented with a unique legal question. Specifically, does Newark have a foreign policy? I think former council member John Suchanec posed it, and it involved Central America.

A recent note on the University of Delaware's Web site reminded me of foreign relations on the local level. As I write this, a new wave of terror attacks in India has underscored this issue. Let me explain.



Sisk

The Web site noted that Professor Juan Villamarin had died. I knew Professor Villamarin mostly as what Tom Wolfe, in "Bonfire of the Vanities" calls a "telephone doughnut." A telephone doughnut is a person one knows in business, and may deal with for years, but seldom, if ever, meets.

Professor Villamarin taught sociology, but that's not how I know him (and I actually did meet him a few times). When he and I talked, it was because he was trying to help a student in trouble. Sometimes the student would have sufficient trouble to need a lawyer. During his time at the university, and after his retirement (maybe especially after his retirement), he worked tirelessly on behalf of any student who needed his assistance, and many of these were students from other countries.

No one is more vulnerable to a criminal charge than a foreign student. Foreign students are mostly here at the sufferance of our government, and conviction of even a minor criminal charge can lead to penalties up to and including deportation. In the post 9/11 world, a charge of, say, terroristic threatening — a common charge when people in deteriorating relationships say unkind things to each other — takes on a whole new overtone if the accused is from the Middle East.

Add to this the fact that many students come from lands that are not exactly run like New England town democracies. Their assumptions about how our legal system will treat them often do not include concepts like due process of law.

Professor Villamarin devoted countless hours to assisting and counseling foreign students in distress. When I represented one of his students, more often than not, part of the reward was seeing the light dawn in the student's eyes that, whatever the outcome of the case, life would go on. His or her studies would go on. And that the American system for resolving such matters is not perfect, but attempts to be fair.

While this certainly is a critical matter to the individual student, I suggest that it means more.

The vast majority of foreign students in Newark are here because their dream is either exactly the same as most of our ancestors—to live, study and work in a place of religious,

See SISK, 13 ►

## OUT OF THE ATTIC



This week's Out of the Attic features a view of Old Oak Road looking from the West Main Street intersection in December 1936. The photo is on loan to the Newark Post from the Newark Historical Society collection. Readers are invited to share additional information about the photo with the Newark Historical Society. Visit the Newark History Museum at 148 E. Main St. (between Choate and Haines Streets). Hours are Thursday 5 – 8 p.m., Friday Noon – 3 p.m., and Saturday and Sunday, 2 – 5 p.m. Admission is free. Contact the Historical Society by phone at 224-2408 or e-mail [newarkdehistoricalsociety@yahoo.com](mailto:newarkdehistoricalsociety@yahoo.com).

## Let the criminals pay higher taxes

Bob Fell  
Newark

I read with great interest your story on tax increases for the residents of Newark. There is much too much crime in Newark.

If we then need more police officers, why are the law abiding being punished with a tax increase? Why not put the additional costs on the people creating the problem?



Increase fines and court costs for those individuals that are breaking the law. Since these people obviously have

no respect for the law, hit them where it really hurts — in the pocketbook.

Hopefully if the word gets out that it is really expensive to break the law here, the criminals will go elsewhere.

## The change we need begins in Poland

Jillian Dunne  
Newark

Scientists now say we have only five to 10 years to act to avoid the most catastrophic impacts of global warming, including a dangerous rise in sea level, severe droughts, intense hurricanes and floods.

Next month, world leaders will convene in Poznan, Poland to continue negotiations on a new agreement to cut global warming pollution worldwide to replace the expiring Kyoto Protocol.

By personally attending the conference and committing to science-based action on global warming, president-elect Obama would show the

See PAGES, 7 ►

Dr. Linda Nguyen, DDS  
Dr. Junaid Chaudhry, DMD  
Dr. Amit Dua, DMD  
Dr. Aaron Poleck, DMD

302.369.6900

CHRISTIANA  
DENTAL SPA

Dental care with spa amenities.

General and  
Cosmetic Dentistry

[www.christianadentalspa.com](http://www.christianadentalspa.com)

Convenient evening and weekend  
appointments available.

Receive the quality  
dental care you need  
and the pampering  
you deserve at  
Delaware's first dental spa.

Our prices even make  
ol' Scrooge happy!



Stop in to the  
Newark  
Barber Shop

- Licensed Barbers
- Reasonable Cost
- True Barber Shop Atmosphere

Mon. 9:00 – 3:00  
Tues. 9:00 – 5:30  
Wed. 9:00 – 5:30  
Thurs. 9:00 – 6:30  
Fri. 9:00 – 5:30  
Sat. 8:00 – 12:00  
Sun. – Closed

241 Elkton Road • Newark, DE  
(Located across from City Hall)

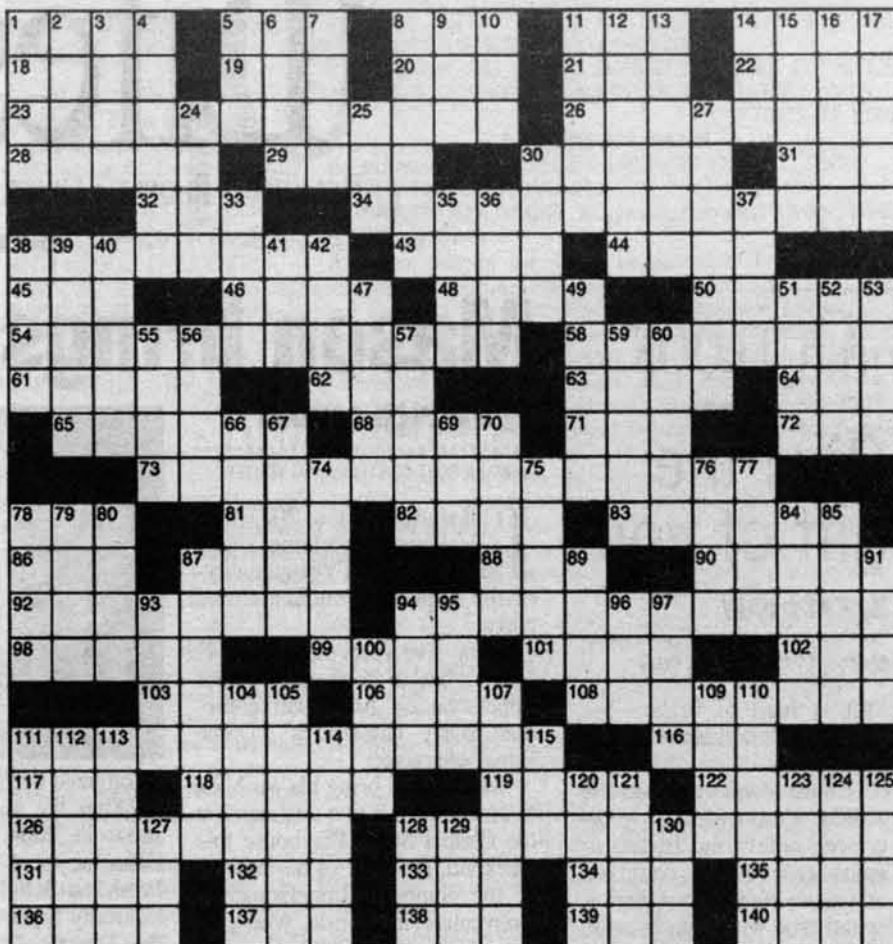
[www.newarkbarbershop.com](http://www.newarkbarbershop.com)

302-368-5666





- ACROSS**
- 1 Strike-breaker  
5 Suffix with spat  
8 Salon supply  
11 Research site  
14 Blind as —  
18 — Romeo  
19 Word with pack or rug  
20 Generation  
21 Air-quality org.  
22 Pedestal part  
23 Fishy actress?  
26 Dignified  
28 "— Gay"  
29 Jannings or Gilels  
30 "— Man" (78 song)  
31 — kwon do  
32 Quiche ingredient  
34 Fishy outlaw?  
38 Bucolic  
43 James of "Brian's Song"  
44 Jacob's twin  
45 A mean Amin  
46 "Nabucco" number  
48 Neighbor of Niger  
50 Alcove  
54 Fishy film?  
58 Future
- 61 Submarine finder  
62 — Tse-tung  
63 Lurid Lugosi  
64 Chest protector  
65 Funt apparatus  
68 Supreme leader?  
71 Parka part  
72 Southern constellation  
73 Fishy physician?  
78 Use a phaser  
81 Letter from Athens  
82 "Mein —" ("Cabaret" tune)  
83 C&W's Tubb  
86 Seville shout  
87 Whirl  
88 Actor  
90 Cairo creed  
92 Collegiate sport  
94 Fishy TV show?  
98 Crooked  
99 French couturier  
101 Dashboard feature  
102 Cpl.'s superior  
103 Border on  
106 Bucket
- 108 Photo writer?  
111 Fishy  
116 Squirrel's snack  
117 Author LeShan  
118 Bell town  
119 Pinza or Chaliapin  
122 School tool  
126 Chunky pasta  
128 Fishy novel?  
131 Nixon or Johnson  
132 "Foucault's Pendulum" author  
133 Chicken — king  
134 Cow's comment  
135 Unusual  
136 Common Market currency  
137 DC figure  
138 Palindromic diarist  
139 Woolly one  
140 Part of Micronesia
- DOWN**
- 1 Close as can be  
2 Family  
3 "The Mod Squad" hairodo  
4 "Petrouchka," for one  
5 Decorative vase  
6 Like some excuses  
7 Mighty mite  
8 Medicinal plant  
9 Self-esteem  
10 Singer Dickey  
11 Paul of "American Graffiti"  
12 Cochise or Geronimo  
13 Washes  
14 Fuss and feathers  
15 Swahili, e.g.  
16 Dwight's competition  
17 Fiddled (with)  
24 Desdemona's enemy  
25 Loon lips  
27 '82 Toto hit  
30 Sociable stalling  
33 Alum  
35 Shoestring  
36 Bolger/Haley co-star  
37 Throw in the towel  
38 Prepares cherries  
39 — committee  
40 Tuscan town  
41 Pound sound  
42 Neeson or O'Flaherty  
47 Video game company  
49 Exclude  
51 Arnaz's country  
52 It grows on you  
53 Napoleonic site  
55 Sleep in the woods  
56 Hurler  
57 Hersher  
58 Booze  
59 Brink  
60 Glue guy  
66 Runs around in circles?  
67 Grate stuff  
69 Vane dir.  
70 Emulate  
74 Like many bathrooms  
75 Coaxed  
76 "I'm working —"  
77 Nuthatch's home  
78 "Nana" author  
79 "Oh, woel"  
80 Act like a chicken  
84 Winter mess  
85 Ballroom dance  
87 Lake sight  
89 Birdsong of basketball  
91 Lauer or LeBlanc  
93 Paper quantity  
94 Actor Beery  
95 Like a desert  
96 Solo of "Star Wars"  
97 King of comedy  
100 — facto  
104 Opens  
105 Daze  
107 Tripoli  
109 Knitting stitch  
110 Little mouse?  
111 Sock a shuttlecock  
112 "Farewell!"  
113 Light beer  
114 Alliance  
115 Put away a pickle  
120 Any  
121 Chilly powder?  
123 Inventive sort?  
124 Neutral tone  
125 Stink  
127 Mil. address  
128 Critic's god?  
129 President  
130 "The Gold Bug" author



# LETTERS, from 6

world that America is once again ready to lead on global warming solutions.

After eight years of foot-dragging and obstruction by the Bush administration and with so much at stake, the world cannot afford for president-elect Obama to pass up his first, best opportunity.

Mr. Obama, please go to Poland and provide the leader-

ship for global warming solutions we've been missing for too long.

## Done, done and coming soon

David Stockman  
Newark

One of the biggest issues in my neighborhood in Newark (District 4) is the current Newark Budget and public safety. The possible addition

of five more police officers (as requested by Chief Tiernan) has been a very contentious issue.

It would be great to see a story in the Post that interviews Tiernan asking him (1) to comment on crime in Newark and what the NPD has been doing to ensure public safety and (2) to explain why he has requested the five additional officers and how the additional officers will help make Newark safer.

It would also be great to hear what the mayor and members of city council think of Tiernan's proposal and how

they intend to fix the city's budget as the economy continues to worsen.

Thanks.

# Christmas Bazaar & Craft Show

St. Thomas Episcopal Church

276 South College Avenue - Newark

(Across from the University of Delaware)

Friday, December 5th 12pm - 7pm

Saturday, December 6th 9am-5pm

Sunday, December 7th 12pm-4pm

Hand Crafted Items • Basket Raffles  
Christmas Resale • Freshly Baked Goods  
Cafe serving homemade soup, bread & hotdogs

St. Thomas' Antique Road Show

Pay a small fee to get your items appraised  
by Wilson's Auction & Appraisers All 3 Days

Saturday only:

Top \$\$ Paid For Jewelry

Bring single earrings, damaged chains or unused gold or silver and get paid on the spot by our reputable jeweler

Breakfast with Santa 9-11am - Saturday only

Pictures with Santa 9am-2pm - Saturday only

# HODGSON CRAFT FAIR

Saturday, December 6th  
9:00-4:00

Hodgson Vocational-Technical High School  
2575 Glasgow Avenue

Newark, Delaware 19702

(Near Peoples Plaza in Glasgow)

(302) 834-0993

• Refreshments • Free Admission

Over 200 selected artisans will display  
only the finest of handcrafted items.

*Christmas in Odessa*  
*The Tradition Continues!*

Saturday, Dec. 6th, 2008  
See beautifully decorated homes in town and surrounding countryside including Historic Odessa Foundation Homes.  
christmas crafts • antiques • seasonal fresh cut greens  
music • activities & food to fill your day

One continuous tour: 10:00am to 7:00pm  
\$15 in advance • \$20 the day of tour  
\$5 children under 12 • under 6 FREE  
Profits benefit local students for college scholarships, the local library and other educational activities

(302) 378-4900  
www.christmasinodessa.com



# Lifestyle

RELIGION • PEOPLE • DIVERSIONS • THE ARTS

## OUTLOOK

### Give the gift of you

By KATY DALY

SPECIAL TO THE NEWARK POST

It is hard to believe but the 2008 holiday season is upon us.

I have always enjoyed the holiday season; getting together with family and friends to enjoy each others' company and share meals. It's a treat to spend time with grandparents and to see how big all of the cousins have grown.

Now that Thanksgiving has passed there are probably hundreds of thoughts swirling around in your head. Everything from remembering to ask Aunt Liz for her pumpkin cookies recipe, to why did I eat so many pumpkin cookies, to how am I going to afford buying gifts?

As we enter the biggest gift giving time of the year, many of us are feeling the strains of having less expendable funds. We are all trying to figure out how we are going to afford the heating and electric bills and still have money left over to purchase gifts for our families and friends. There are some solutions to this dilemma, and going into credit card debt is not one of them.

Start by focusing on what the holidays are really about. It is a great opportunity to catch up with friends and family that you may not get to see much throughout the year. Friends and family don't expect gifts from you; they just want to be able to spend time with you.

If you really feel compelled to bring something to a gathering, bring some delicious homemade baked goods for everyone to enjoy, or a board game that you can all play together. The old saying really does hold true, "Your presence is worth more than your presents."

See OUTLOOK, 9 ►

## Mason brings Dame Edna to Newark

By MATTHEW BASHAM

NEWARK POST CONTRIBUTING WRITER

It all started back in 2003 with a Halloween costume suited for a favorite-TV-personality-of-the-opposite-gender-themed party.

Now, five years later, Scott F. Mason has a flourishing career impersonating Australian comedian Barry Humphries' "Dame Edna" character.

Mason will bring his act back to Newark for a two-day stand at the Chapel Street Playhouse this weekend, fresh off of his success at the Sunburst Impersonator's Convention in Florida, where he earned the title 2008 Funniest Male.

"Winning felt great," Mason said of the event. "It was a lot of fun, and it is a real honor to be



recognized by peers."

After the success of his first show in 2004, Mason's Dame Edna has been busy hosting the FreshStartScholarshipFoundation Celebrity Squares Game Show at the Dupont Country Club and other private functions.

"Most of my comedy is coming from real life," Mason said about his approach to the Dame

Edna persona. He promised that this weekend's show would full of high energy, off-the-wall comedy filled with plenty of innuendos in a family friendly PG13 performance.

"Very seldom do I repeat material and I never do [Barry Humphries'] material," Mason said. "A lot of the real me is in the show. My comedy is based on true stories and is somewhat auto-biographical."

For those unfamiliar with the Dame Edna character, think very outspoken older woman with bright neon hair poking fun at herself and reaching into the audience for laughs.

Although Mason may break the fourth wall and speak to the audience directly, Dame Edna will openly dismiss any belief that she is a made up character, and may go so far as to com-

ment on how silly it would be for a man to dress in drag as an older woman for entertainment purposes.

This show will mark the fourth anniversary of Mason's two hour comedic performances, which include titles such as "One Dame Funny Halloween," "One Dame Tour of Delaware," and "One Dame Crazy FUNdraiser."

During the two evening performances, at 8 p.m. on Friday and Saturday, local award-winning comedic musician Todd Chapelle will open the show and perform his own acoustic version of the Chapel Street Playhouse's famous Curtain Speech.

For more information on Chapel Street Playhouse shows or how to obtain tickets to the Dame Edna show this weekend, please visit [www.chapelstreet-players.org](http://www.chapelstreet-players.org)

## UD students form their own branch of Newark Rotary Club

By ALEXANDRIA DUSZAK

NEWARK POST CONTRIBUTING WRITER

In September, University of Delaware students formed the Rotaract Club, a student-run organization.

President Jon Dhanawade, a sophomore, formed the club after meeting with members of the Newark Rotary Club. Dhanawade said he learned the Newark Rotary Club was interested in forming a Rotaract Club at the university through a friend who is a member of Engineers Without Borders.

The Rotary Club is a service-oriented organization that tackles problems like illiteracy, poverty, violence, and the environment, the Newark Rotary Club's website says. The Newark Rotary Club is

one of over 33,000 Rotary Clubs worldwide.

Rotaract Clubs, like Rotary Clubs, seek to improve the local and international communities, but they focus more heavily on service than on philanthropy. Typically, members must be between 18 and 30 years of age, but the founders of UD's Rotaract Club decided to make an exception.

"We removed the age limit for college kids," vice president Maja Peterson said.

Dhanawade sent a Facebook message to friends and acquaintances he thought would be interested in joining the club. According to the message, the

club's goal is to carry out at least one community service project and one international service project per year.

Dhanawade said the Rotaract Club is a great networking opportunity. Members will be able to get involved in projects in conjunction with Rotary District 7630, Newark Rotary Club's district.

Members will also be able to work with Rotarians to develop international projects, he said in his message.

The Rotaract Club is a registered student organization at the university. Although the group has an RSO webpage, "Facebook is the best way to find us," Dhanawade said.

As of Nov. 28, the club's Facebook group had 13 members.

The group meets about once a week to discuss their goals and future plans. "We try to keep it under half an hour," he said.

Dhanawade said the club is focused on building its resume. They would like to eventually establish a long-term project.

"We're definitely looking for an international project," Dhanawade said.

One project under consideration is a book drive through a partnership with International Book Project. The Rotaract Club plans to collect books and monetary donations. These will be shipped abroad to children in need. The book drive will most likely take place in January, Peterson said.





### Mariner Financial Services

"since 1996"

"Dan was able to save us over \$400 per month on our Health Insurance premium."

Walt, Newark, DE

"Working with Dan I was able to purchase good Health Insurance, Disability Income Insurance, and Term Life Insurance for what I used to pay for Health Insurance alone."

Tony, Oxford, PA

"We have worked with Dan for over 15 years and he has always been responsive and has looked out for our best interest. I recommend his services to a lot of my friends and co-workers."

Frank, Collingdale, PA



**Daniel Reisinger, CLU, ChFC**  
Registered Employee Benefits Consultant  
610.389.1231  
Email: [finsrv@comcast.net](mailto:finsrv@comcast.net) • [www.marinerfinancialservices.com](http://www.marinerfinancialservices.com)

• HEALTH INSURANCE • DISABILITY INSURANCE • ANNUITY PROGRAMS • LIFE INSURANCE

## "Uncle Bob's"

### New Years Party!

**Tickets are on sale NOW!**  
**DON'T WAIT...**  
**we sell out every year!**

Two Top Name Bands!!  
"Mason Dixon" on the Bar Side  
"Hung Jury" in the Banquet Hall

Full course dinner with two meats.

**Only \$25.00 per person**

**For tickets call: Marvin at 410-398-1381**  
565 Kirk Road, Elkton, MD





# Council weighs budget

## ► COUNCIL, from 1

Tiernan has noted that while some crimes have shown a decline over the past year, others such as thefts and burglaries have continued to rise.

"Unfortunately, we've had to shift our manpower from one major crime wave to another throughout the fall," he said this week. "We put all of our officers downtown to combat the robberies that were occurring there and then we had to shift them to address the home invasions and then the group from Maryland robbing houses, so I think we've been playing something of a shell game."

Tiernan also said that the reported decline in calls for service is more a factor of a change in the way the department records calls.

"It used to be an officer calling in to take a lunch break would be reported as a call for service," he said.

Yet, the chief's request comes in advance of what is expected to be a particularly tight budget year for the city, which is facing declining revenues from its transfer tax, an already weakened cash

reserve, a one-time \$3.6 million payment to resolve its long-running reservoir lawsuit, increased costs associated with employee health care and pensions, and other inflationary factors.

City staff has proposed the potential \$1.7 million gap between estimated revenues and the expenditures proposed for next year — including the five new police officers — be closed with the adoption of a 22-percent hike in the property tax rate and a 15-percent hike in the city water rate.

Council, meanwhile, is hoping to mitigate the impact of those rate increases elsewhere in the budget. That effort will most likely include a reduction in Tiernan's request, which is one of the few discretionary expenditures in the budget, aside from services and employee pay raises.

"There are also numerous expenditures being considered (for cuts), as well as potential reductions or elimination of programs and services," said City Councilman David Athey. "In order to pass the budget we need to prioritize the expenditures, decide what can be cut or scaled

back, and reconcile the most appropriate way to pay for it all."

Tiernan, who is currently in the process of filling two vacancies within the 65 sworn officers positions currently budgeted for the police department, said he would be content with whatever number of additional positions council ultimately agrees upon.

"If we get no extra officers or all five, the Newark Police Department will be just as committed to ensuring the safety of all Newark residents," he said. "In a perfect world, we'd like to have 80 officers, but we certainly understand that's probably more than we can afford."

Although council members have discussed their general feelings regarding the 2009 budget proposal during open meetings, they have not met to hammer out the details of what they are willing to trim or adjust to balance their spending plan.

Council is expected to begin that work during its next regularly scheduled meeting on Dec. 8. A follow-up meeting planned specifically for dealing with the budget is also planned for 7 p.m. on Dec. 15. A final budget must be adopted by Jan. 1.

## Don't overspend this Christmas

## ► OUTLOOK, from 8

**Solution to The Post Stumper on Page 11.**

SCAB	ULA	GEL	LAB	ABAT
ALFA	RAT	AGE	EPA	DADO
MARLIN	MONROE	MATRONLY		
ENOLA	EMIL	MACHO	TAE	
EGG	BILLY	THESQUID		
PASTORAL	CAAN	ESAU		
IDI	ARIA	CHAD	NICHE	
THEGODFATHER	EVENTUAL			
SONAR	MAO	BELA	BIB	
CAMERA	ROSS	ARM	ARA	
PLASTIC	STURGEON			
ZAP	CHI	HERR	ERNEST	
OLE	REEL	UGO	ISLAM	
LACROSSE	NAMETHAT	TUNA		
ASKEW	DIOR	DIAL	SGT	
ASBUT	PAUL	SNAPSHOT		
SALMON	RUSHDIE	NUT		
EDA	ADANO	BASS	RULER	
RIGATONI	PEYTON	PLAICE		
VEEP	ECO	ALA	MOO	RARE
EURO	SEN	NIN	EW	TRUK

You may feel the need to give gifts to others, maybe because you really enjoy giving and the holidays just won't feel the same if you don't. It's great to want to give, so why not make sure it goes to someone in need.

Perhaps you and your group of friends could all chip in and participate in one of the many holiday charity drives or donation programs. Rather than spending money on each other, you could give a group gift to a person or family experiencing a hardship. In doing this, you would satisfy your desire to give and help someone out in doing so.

Of course, you will probably be purchasing gifts for some people this holiday season and there are some things to keep in

mind that will help you control your costs:

- Only buy what you can actually afford.
- Take advantage of coupons and sales.
- Be realistic about what you are giving this year; now may not be time for a new TV.

Try making a list of the people to whom you will be giving a gift and what you are going to buy. Deciding in advance what you are going to purchase will allow you the time to research prices and get the best deal.

But, no matter what you give this holiday season, remember to keep sight of the most important things in life and spend a little extra time enjoying the company of family and friends.

## Take Control Of Your Utility Bills!

**Power Off? We Sell Generators!**

**Hentkowski, Inc.**  
"Your Key To Comfort"  
Heating & Air Conditioning

**302-998-2257**

**SewAssure**  
DEALERS

**www.hentkowski.com**

Carrier  
Turn to the Experts

Celebrating Our 40th Anniversary in Business!

**ROUTE 72 SELF STORAGE**  
302-731-7500

**WE HONOR COMPETITORS' COUPONS!**

**CUSTOMER'S CHOICE SPECIAL!**  
\$1 first month, or  
Free second month, or  
1/2 price for first 2 months

- No security deposit or administration fee
- Armed/24 hour surveillance • Month to month leases available
- Located just minutes from I95 and the University of Delaware

**960 S. Chapel Road, Newark, DE 19713 • 302-731-7500**

**www.Route72SelfStorage.com**  
**Route72SelfStorage@verizon.net**

## FREE! Inspiring Video CD

60 Minutes that could change your life!

**For This Cause**

No cause of man can compare with the cause of *Jesus of Nazareth*. That cause, as the angel said, will bring joy & blessing to every person who has ever lived. This inspiring video brings forth Bible prophecy of the past, present and future work of *Jesus of Nazareth*.

To order your free\* copy of *For This Cause* Call Toll Free 1-888-946-7729 or write to:

**Associated Bible Students**  
P.O. Box 1783, Wilmington, DE 19899  
\*One free copy per household — additional copies \$2.00.

Name \_\_\_\_\_  
Address \_\_\_\_\_  
City \_\_\_\_\_ State \_\_\_\_\_ Zip \_\_\_\_\_

**Glasgow High School**  
*Annual*  
**Christmas CRAFT FAIR**

**Saturday, December 13th, 2008**  
**9:00 am to 3:00 pm**

**Located on Route 896, south of Route 95 Glasgow, DE**



# Diversions

THEATRE • EVENTS • EXHIBITS • NIGHTLIFE • MEETINGS

FRIDAY

5

**WINTERFEST** 6–9 p.m. Newark Parks & Recreation sponsors holiday entertainment, caroling, tree lighting, ice carving and more. Academy Lawn, Newark. Info, 366-7060.

**DANCE PARTY** 9:30 p.m. Awesome 80's. Deer Park Tavern, 108 W. Main, Newark. Info, 369-9414.

**FILM NIGHT** 6:30 p.m. Presenting "Transsiberian," the story of a train journey from China to Moscow that becomes a thrilling chase of deception and murder. Free. Newark Free Library, 750 Library Ave., Newark. Info, 731-7550.

**LIVE MUSIC** 10 p.m. Featuring acoustic rock with Kenny Cunningham. Home Grown Café, 126 E. Main St., Newark. Info, 266-6993.

**COOKIE WALK & LUNCHEON** 11 a.m. – 2 p.m. Sponsored by Presbyterian Women. Eat-in or take home. Soups, sandwiches and cookies. \$5 and up. St. Andrews Presbyterian Church, 200 Marrows Road, Newark. Info, 738-4331.

**ARTIST RECEPTION** 7–9 p.m. Holiday Art Market. Newark Arts Alliance, 276 E. Main St., Newark. Info, 266-7266.

**CONCERT** 12:15 p.m. Presenting a holiday instrumental, a Brandywine Harp Christmas. Grace Episcopal Church, Wilmington. Concord Pike, Wilmington. Info, 478-9533.

**THEATRE** 7 p.m. Also Dec. 6 at 2 p.m. and 7 p.m. The Concord Players present "Charlotte's Web." Concord High School, Wilmington. Info, 475-3951.

**ARTIST RECEPTION** 5:30–7:30 p.m. AP Studio Art Students and their teacher present unique works of art. Cab Calloway School of the Arts Gallery, 100 N. DuPont Road, Wilmington. Info, 651-2700.

**WEAVERS GUILD** 10 a.m. – 3 p.m. Also Saturday, Dec. 6. Special Holiday Sale. Delaware Center for Horticulture, 1810 N. Dupont St., Wilmington. Info, 658-6262.

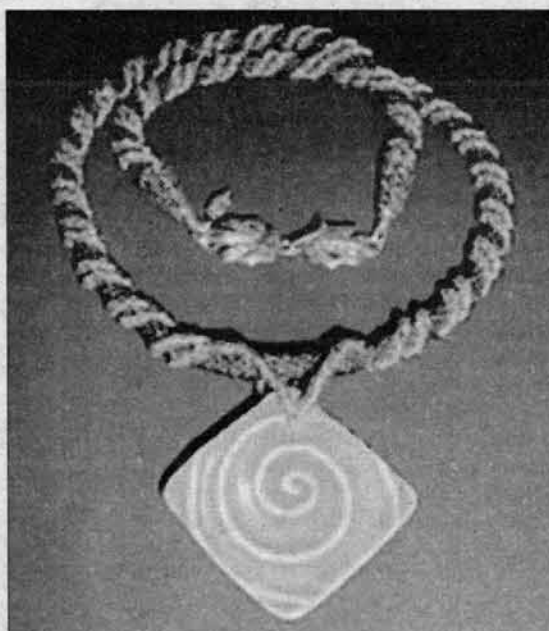
**DANCE** 8–11 p.m. Contra Dance. \$9. Arden Gild Hall, 2406 Granby Road, Wilmington. Info, 478-7257.

## SATURDAY, DEC. 6

**LIVE MUSIC** 9:30 p.m. Featuring What Mama Said. Deer Park Tavern, 108 W. Main St., Newark. Info, 369-9414.

**LIVE MUSIC** 10 p.m. Featuring local folk rock with Pollard's Pharmacy. Home Grown Café, 126 E. Main St., Newark. Info, 266-6993.

## HOLIDAY ART MARKET



Artist's reception for the Holiday Art Market on Friday, Dec. 5, from 7–9 p.m. at the Newark Arts Alliance, 276 E. Main St., Newark. Info, 266-7266.

**MOVIE MATINEES** 11 a.m. Bring a canned good or non-perishable food item for the Newark Area Welfare Committee's holiday basket and get in free. Newark Cinema Center 3, Newark Shopping Center.

**BUS TRIP** 7 a.m. Newark Parks & Recreation sponsors bus trip to New York City. \$44, Newark residents \$39. Bus departs from city Municipal

Building, 229 Elkton Road, Newark. Info, 366-7060.

**PANCAKE BREAKFAST & GIFT SALE** 7:30 a.m. – 1 p.m. Featuring artists from the Newark Arts Alliance. \$6 adults, \$3 for 10 and under. Unitarian Universalist Society, 579 Polly Drummond Hill Road, Newark. Info, 533-5149.

**CLOTHING SALE** 8:30 a.m. – 12:30 p.m. Great selection of used clothing from infants to adult, plus shoes, purses and more. Charter School of Wilmington, 100 N. DuPont Road, Wilmington. Info, 654-2980.

**HEALTH FAIR** 9:30 a.m. – 12 Noon. "Take Charge of Your Health" sponsored by the Delaware chapter of the National Multiple Sclerosis Society. John H. Ammon Medical Education Center, Christiana Hospital. Info, 655-5610.

**COMMUNITY CAROL SING** 6 p.m. Bring a non-perishable food item for the community food closet. Christiana Presbyterian Church, 15 N. Old Baltimore Pike, Newark. Info, 368-0515.

**HOLIDAY COOKING SHOW** 11 a.m. – 1 p.m. Parenting Magazine and Young Chefs Academy team up to host a free holiday Cook & Care Event. Young Chefs Academy of Newark, Pike Creek, and Middletown. Info, 234-2800.

**CHRISTMAS IN ODESSA** 10 a.m. – 7 p.m. Self-guided tour of historic Odessa with special events throughout the day. \$20. Info, 378-4900 or www.christmasinodessa.com.

**MANOR HOUSE TOUR** 11 a.m. – 3 p.m. Yuletide tour of the mansion Colonial history. Mount Harmon Plantation, Earleville, Md. Info, 410-275-8819.

**HOLIDAY DANCE PARTY** 8 p.m. – 12 a.m. Music provided by Endless Entertainment. Must be 21. \$10 per person, \$15 per couple. Perryville Fire Company, 920 Principio Furnace Road, Perryville, Md. Info, 410-642-6930.

**CRAFT WORKSHOP** 10 a.m. – 4 p.m. Christmas Wreath Workshop. Class takes one hour, come anytime. \$25, reservations required. Sinking Springs Herb Farm, 843 Elk Forest Road, Elkton, Md. Info, 410-398-5566.

## SUNDAY, DEC. 7

**CONCERT** 7 p.m. Featuring the Wilmington Handbell Ensemble. St. Paul's United Methodist Church, 1314 Foulk Road, Wilmington. Info, 478-3135.

See **EVENTS, 11** ►

## FRIDAY, DEC. 5

**JAZZERCISE LITE** 8:30 – 9:30 a.m. Low impact, modified version for seniors. Newark Senior Center, 200 White Chapel Drive. Info, 737-2336.

## SATURDAY, DEC. 6

**MEN'S BREAKFAST** 7:30 a.m. \$5 donation goes to missions. Life Community Church, 750 Otts Chapel Road, Newark. Info, 738-1530.

**JAZZERCISE** 8:45 – 9:45 a.m. Certified instructor Nadine Weisenbach. George Wilson Center, 303 New London Road, Newark. Info, 366-7060 or www.newarkjazz.net.

**CHRISTIAN MOTORCYCLE ASSOCIATION** 8:30 a.m. First Sat. Denny's, Route 13, New Castle. Info, 322-1121.

**MUSEUM OPEN** 10 a.m. – 4 p.m. Dedicated to the history of Pencader Hundred and the Cooch's Bridge battlefield. Free. Pencader Heritage Museum, Old Baltimore Pike, Newark. Info, 737-5792.

## SUNDAY, DEC. 7

**OVEREATERS ANONYMOUS** 1 – 2 p.m. Westminster House, 292 W. Main St., (Route 273), Newark. Info, 453-9075.

**KNITTING KNUTZ GUILD** 1 p.m. Limestone Medical Center, Room 005, 1941 Limestone Road, Wilmington. Info, 452-0146.

## MONDAY, DEC. 8

**DEPRESSION SUPPORT** 7:15 p.m. New Directions Delaware sponsors support group for persons with depression or bipolar disorder. Aldersgate United Methodist Church, 2313 Concord Pike, Fairfax. Info, 286-1161.

**MHA DEPRESSION SUPPORT GROUP** 7–9 p.m. Sponsored by Mental Health Association in Delaware. To protect privacy of members, meeting locations provided only with registration. Info, 654-6833.

**OVEREATERS ANONYMOUS** 7:30 – 8:30 p.m. Newark United Church of Christ, 300 E. Main St., Newark. Info, 377-6746.

**NEWARK ROTARY CLUB** 6:15 – 7:30 p.m. Timothy's, 100 Creek View Road, Newark. Info, 453-8853.

**SCOTTISH DANCING** 7:30 p.m. St. Thomas Episcopal Church, 276 S. College Ave., Newark. Info, 368-2318.

**ENGLISH CLASSES** 1 p.m. and 7 p.m. English conversational classes. Free. Newark United Methodist Church, 69 E. Main St., Newark. Info, 368-8774 or esl-nurmc@hotmail.com.

**TAI CHI** 3–4 p.m. Mon. (Advanced) or Wed., 4–5 p.m. (Beg/Intermediate). \$20 per month. Newark Senior Center, 200 White Chapel Drive. Info, 737-2336.

**TAI CHI** 10–11 a.m. and 11:45 a.m. – 12:30 p.m. Mon. through Fri. \$70/month. Shaolin Martial Monks School, 181 E. Main St., Newark. Info, 373-2918.

**JAZZERCISE LITE** 9–10 a.m. Low impact, modified version for seniors.

## MEETINGS

Newark Senior Center, 200 White Chapel Drive. Info, 737-2336.

**JAZZERCISE** 5:45 – 6:45 p.m. Certified instructor Nadine Weisenbach. George Wilson Center, 303 New London Road, Newark. Info, 366-7060 or www.newarkjazz.net.

**PILATES** 11:30 a.m. – 12:30 p.m. Mon., 9–10 a.m. Tues., 6:45–7:45 p.m. Wed., 10:15–11:15 a.m. Thurs. Newark Senior Center, 200 White Chapel Drive, Newark. Info, 737-2336.

**STRENGTH TRAINING** 10:15 – 11:15 a.m. Mon., Wed. and Fri., 6:45–7:45 p.m. Tues. and Thurs. Newark Senior Center, 200 White Chapel Drive. Info, 737-2336.

**STRENGTH & FLEXIBILITY CLASS** 9:30 – 10:30 a.m. Mon. Wed., and Fri.; \$4 per session/\$50 for six weeks. First Presbyterian Church, 292 W. Main St., Newark. Info, 731-5644.

**KUNG FU** 6–7 p.m. and 7–8 p.m. Mon., Wed., and Fri. \$70/month. Shaolin Martial Monks School, 181 E. Main St., Newark. Info, 373-2918.

**KUNG FU** 6:30 p.m. Mon., Wed., and Fri.; 10 a.m. Sat. \$100/month, unlimited sessions. Shao Lin Tiger and Crane Kung Fu Academy, Market East Plaza, 280 E. Main St., Newark. Info, 737-4696.

**PANIC RELIEF** 7 p.m. Mon. and Wed. Phone workshop. Programs available. Overcome fears, anxiety and

agoraphobia, and achieve positive self-image. Info, 732-940-9658.

**DIVORCECARE** 6:30 – 8:30 p.m. Berea Presbyterian Church, 957 Old Lancaster Pike, Hockessin. Info, 737-7239.

**PARENTS WITHOUT PARTNERS** 7:30 p.m. Orientation meeting. Bear Library, Governor's Square. Info, 998-3115.

**MARINE CORPS LEAGUE** 7 p.m. A service organization open to all former and active duty Marines. Marine Reserve Center, Kirkwood Highway, Wilmington. Info, 475-2422.

## TUESDAY, DEC. 9

**HEALTHY HIKE** 8 a.m. White Clay Creek State Park, 425 Wedgewood Road, Newark. Info, 368-6900.

**OVEREATERS ANONYMOUS** 6–7 p.m. Newcomers meeting follows at 7 p.m. Aletheia School, 91 Salem Church Road, Newark. Info, 824-6317.

**CONSTITUENT BREAKFAST** 7–8 a.m. Join state Rep. John Kowalko for coffee and conversation. Friendly's Restaurant, 1115 S. College Ave., Newark. Info, 577-8342.

**NEWARK DELTONES** 7:45 p.m. For men who like to sing. New Ark United Church of Christ, 300 E. Main St., Newark. Info, 376-8934.

**DIAMOND STATE CHORUS OF SWEET ADELINES** 7:30–10 p.m. Women's acapella singing group. Curious and enthusiastic singers welcome. Limestone Presbyterian Church, 3201 Limestone Road, Wilmington. Info, 731-5981.

## PARKINSON'S STRENGTH

**TRAINING** 10:30 a.m. Newark Senior Center, 200 White Chapel Drive, Newark. Info, 737-2336.

**OPEN SWIM** 4:30 – 7 p.m. Tues. and Thurs. Gore Aquatic Center, Newark Senior Center, 200 White Chapel Drive, Newark. Info, 737-2336.

**YOGA** 2–3:30 p.m. Tues.; 9–10 a.m. Thurs. Newark Senior Center, 200 White Chapel Drive, Newark. Info, 737-2336.

**JAZZERCISE LITE** 5:30 – 6:30 p.m. Low impact, modified version for seniors. Newark Senior Center, 200 White Chapel Drive. Info, 737-2336.

**JAZZERCISE** 8:45 – 9:45 a.m. and 4:30 – 5:30 p.m. Certified instructor Nadine Weisenbach. George Wilson Center, 303 New London Road, Newark. Info, 366-7060 or www.newarkjazz.net.

**TAI CHI** 6–7 p.m. and 7–8 p.m. \$70/month; Shaolin Martial Monks School, 181 E. Main St., Newark. Info, 373-2918.

**TAI CHI** 6:30 p.m. Tues. and Thurs. \$70/month, unlimited sessions. Shao Lin Tiger and Crane Kung Fu Academy, Market East Plaza, 280 E. Main St., Newark. Info, 737-4696.

**CHRISTINA SCHOOL BOARD** 7:30 p.m. Info, 552-2600 or visit www.christina.k12.de.us.

**AMERICAN LEGION** 7:30 p.m. Newark American Legion Post #10. Downstairs meeting room of Post 475 VFW, Veterans Drive, Newark. Info, 366-8438.

See **MEETINGS, 11** ►



► **EVENTS, from 10**

**CONCERT** 7 p.m. Performance by The Opus One Vocal Jazz Ensemble. \$8. Bellevue State Park, Wilmington. Info, 739-9191.

**CONCERT** 3 p.m. Featuring the New Ark Chorale. Adults \$5, children under 12 \$2. St. Michael Lutheran Church, 109 East Doe Run Road, Unionville, Pa. Info, 610-793-3122.

**THEATRE** 3 p.m. First State Ballet Theatre Company presents "The Land of the Sweets Nutcracker Tea." \$15. The Grand Opera House Salon, Wilmington. Info, 658-7897.

**MONDAY, DEC. 8**

**WOMEN'S LUNCHEON** 11 a.m. "Jingle Bell Luncheon" sponsored by Newark Women's Connection featuring a quartet from Newark Chorale and inspirational speaker Susie Jones. \$16. Reservations required. Christiana Hilton, Newark. Info, 737-7239.

**CONCERT** 7 p.m. Featuring the Wilmington Handbell Ensemble. Brandywine Hundred Library, 1300 Foulk Road, Wilmington. Info, 477-3150.

► **MEETINGS, from 10**

**WEDNESDAY, DEC. 10**

**CITIZENS MEETING** 7 - 9 p.m. Annual meeting of The Delaware Citizens Opposed to the Death Penalty featuring guest speaker, Abe Bonowitz, the director of affiliate support at the National Coalition to Abolish the Death Penalty in Washington, D.C. Westminster Presbyterian Church, 1506 W. 13th St., Wilmington. Info, 656-2721.

**CONSTITUENT BREAKFAST** 7:30 - 8:30 a.m. State Rep. Terry Schooley will attend to field questions and concerns. Eagle Diner, Elkton Road, Newark. Info, 577-8476.

**OVEREATERS ANONYMOUS** 7:30 - 8:30 p.m. Asbury United Methodist Church, 300 E. Basin Road, New Castle. Info, 610-444-5194.

**BINGO** 12:45 p.m. Lunch available for \$2.25 a platter at 11:45 a.m. Newark Senior Center, 200 White Chapel Drive. Info, 737-2336.

**EVENING YOGA** 5:30 - 7 and 7 - 8:30 p.m. Sponsored by Newark Parks & Recreation \$65, Newark resident \$55. Newark Senior Center, 200 White Chapel Drive, Newark. Info, 366-7060.

**JAZZERCISE LITE** 9 - 10 a.m. Low impact, modified version for seniors. Newark Senior Center, 200 White Chapel Drive. Info, 737-2336.

**JAZZERCISE** 5:45 - 6:45 p.m. Certified instructor Nadine Weisenbach. George Wilson Center, 303 New London Road, Newark. Info, 366-7060 or www.newarkjazz.net.

**TAI CHI** 9:30 a.m. and 5:30 p.m. Free for people touched by cancer. The Wellness Community in New Castle, 4810 Lancaster Pike, Wilmington. Info, 995-2850.

**DIVORCECARE** 6:30 - 8:30 p.m. Support group meeting. Evangelical Presbyterian Church, 308 Possum Park

**DIVORCECARE SEMINAR** 6:30 - 8:30 p.m. "Surviving the Holidays" with guidance and reassurance through video interviews with counselors in divorce-related care. Berea Presbyterian Church, 957 Old Lancaster Pike, Hockessin. Info, 737-7239.

**FOOD DRIVE** Noon - 10 p.m. Through Dec. 12. Sponsored by Delaware Park and Food Bank of Delaware. Player Rewards members who donate food cans will receive 10 free slot dollars to use at Delaware Park. Info, Jennifer. oberle@delawarepark.com.

**TUESDAY, DEC. 9**

**BUSINESS WORKSHOP** 5:45 - 8:45 p.m. Score presents Business Startup Series Workshop II: Thinking of Starting Your Own Business. \$35. Newark Senior Center, 200 White Chapel Drive, Newark. Info, 573-6552.

**WEDNESDAY, DEC. 10**

**LIVE MUSIC** 9:30 p.m. Featuring Burnt Sienna. Deer Park Tavern, 108 W. Main, Newark. Info, 369-9414.

**LIVE MUSIC** 10 p.m. Featuring Mad-Sweet Pangs with special guest. Home

Grown Café, 126 E. Main St., Newark. Info, 266-6993.

**SPEAKER SERIES** 7 p.m. Featuring Ken Baumgart of the Christiana Historical Society on the history of Christiana. Free. Pencader Museum, 2029 Sunset Lake Road, Newark. Info, 737-5792.

**LECTURE SERIES** 7 p.m. Featuring W. Barksdale Maynard, discussing his book "Buildings of Delaware." Free. Hagley Museum, Wilmington. Info, 658-2400.

**WINTER WEDNESDAYS** 3 p.m. Downtown Newark offers specials from local merchants and restaurants, prize drawings and entertainment every Wednesday. Free parking included. Info, 366-7030.

**SINGLES EVENT** 7 p.m. Speed dating for single professionals. \$35. Pan Tai, 837 N. Union St., Wilmington. Info, 877-477-3328.

**THURSDAY, DEC. 11**

**MUG NIGHT** 9:30 p.m. Featuring Lost in Paris. Deer Park Tavern, 108 W. Main, Newark. Info, 369-9414.

**YOGA CLASS** 7:15 - 8:45 p.m. Yoga for neck and shoulders. \$15, registration required. The Awareness Center, 280 E. Main St., Newark. Info, 792-7230.

not published. Info, 654-6833.

**THURSDAY, DEC. 11**

**YOGA** 6:30 - 8 p.m. Mixed level, Iyengar style. Min. 3 months experience required. Drop-ins welcome. Awareness Center, 280 E. Main St., Suite 109, Newark. \$15/class. Info, 792-7230.

**JAZZERCISE LITE** 5:30 - 6:30 p.m. low impact, modified version for Seniors. Newark Senior Center, 200 White Chapel Drive. Info, 737-2336.

**JAZZERCISE** 8:45 - 9:45 a.m. and 4:30 - 5:30 p.m. Certified instructor Nadine Weisenbach. George Wilson Center, 303 New London Road, Newark. Info, 366-7060 or www.newarkjazz.net.

**YOGA** 10:30 a.m. and 5:30 p.m. Free, pre-registration is required. For people touched by cancer. The Wellness Community in New Castle, 4810 Lancaster Pike, Wilmington. Info, 995-2850.

Road. Info, 737-2300.

**GRIEF SHARE** 7 p.m. Seminar and support group for those who have lost someone close to them. Praise Assembly, 1421 Old Baltimore Pike. Info, 737-5040.

**RELIGIOUS DISCUSSION GROUP** 7 - 8:30 p.m. Current events and religious discussions led by the Rev. Bruce Gillette. Limestone Presbyterian Church, 2301 Limestone Road, Wilmington. Info, 994-5646.

**WILMINGTON SKI CLUB** 7:30 p.m. Hockessin Memorial Hall, 1225 Old Lancaster Pike, Hockessin. Info, 792-0656.

**MS SUPPORT GROUP** 5 - 7 p.m. Main Street Circle of Friends. Newark Senior Center, 200 White Chapel Drive, Newark. Info, 737-4694.

**ANXIETY DISORDER** 6:30 - 8 p.m. Support group sponsored by Mental Health Association in Delaware for Newark area. To maintain the privacy of members, support group locations

**Trunk Show**  
December 3rd - 6th!  
Call or email for details!

trollbeads  
CHAMILIA  
& more!

**Jewelry Diva Gifts**  
Fox Run Shopping Center, Rts 40 & 72, Bear, DE  
302-834-8311 www.jewelrydivagifts.com

**DELAWARE EYE CARE CENTER**

Complete Eye Care  
1-800-900-2020  
5 Locations throughout Delaware

www.delawareeyecare.com

**SMILE BRITE Dental Care**  
NEW & EMERGENCY PATIENTS WELCOME!  
(Rt.40, near Peoples Plaza & Rt. 896)  
Taurance N. Bishop, DDS

302-838-8306  
www.smilebriterdentalkare.com

"Be true to your teeth or they will be false to you"

Pacientes Nuevos Bienvenidos

**SMITH PAVING, INC.** Since 1955

**ASPHALT PAVING CONTRACTORS**

- Small Cement Repairs
- Loose Brick Reset
- Patio's Repointed
- Roof Coating, Painting & Water Proofing
- Asphalt Driveway Repairs & Repaved

Call for FREE ESTIMATES at Winter Rates!

3507 Wrangle Hill Road, Bear, DE 19701  
302.328.1761

**COZY CREATIONS**  
A sale featuring trendy and unique crafts and handmade items for baby and home.

December 6, 2008  
9 a.m. to 2 p.m.

101 Peninsula Dr., North East, MD 21901  
Follow signs and balloons Near Holiday Inn Express

VISA  
Master Card

**DENTAL ASSOCIATES OF DELAWARE**  
DENTISTRY WITH DISTINCTION

We Process your Insurance and help you Maximize your Dental Benefits!

New Patient's Always Welcome.

BRANDYWINE OFFICE - 302.477.4900  
Foulkstone Plaza - 1415 Foulk Rd, Suite 200 - Wilmington, DE 19803  
MIDDLETOWN OFFICE - 302.378.8600  
106 St. Anne's Church Rd, Middletown, DE 19709  
GREENVILLE OFFICE - 302.656.8219  
Greenville Ctr - Bldg C, # 100 - 3801 Kennett Pike - Greenville, DE 19807  
HOCKESSIN OFFICE - 239.5917  
Lantana Square - 500 Lantana Dr - Hockessin, DE 19707  
WWW.DELAWARESMILES.COM



# Christmas Sale

**All Pool Tables On Sale!**

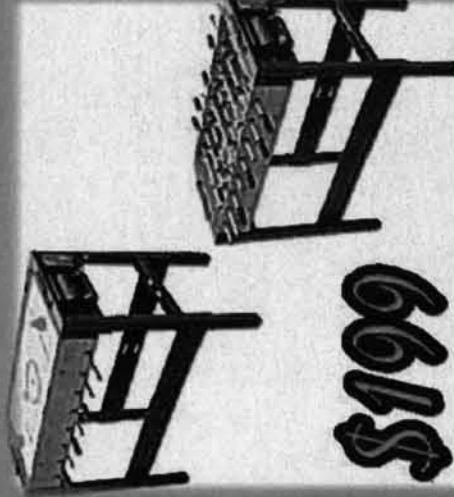
POOL TABLES INCLUDE FREE DELIVERY\*

FREE INSTALLATION

AND FREE PLAY PACK (\$650 VALUE)



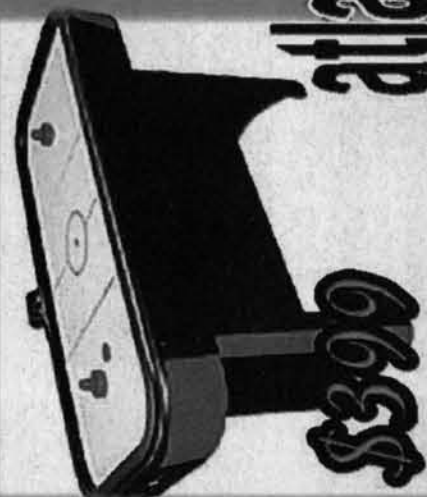
**\$849**



**\$199**



**\$499**

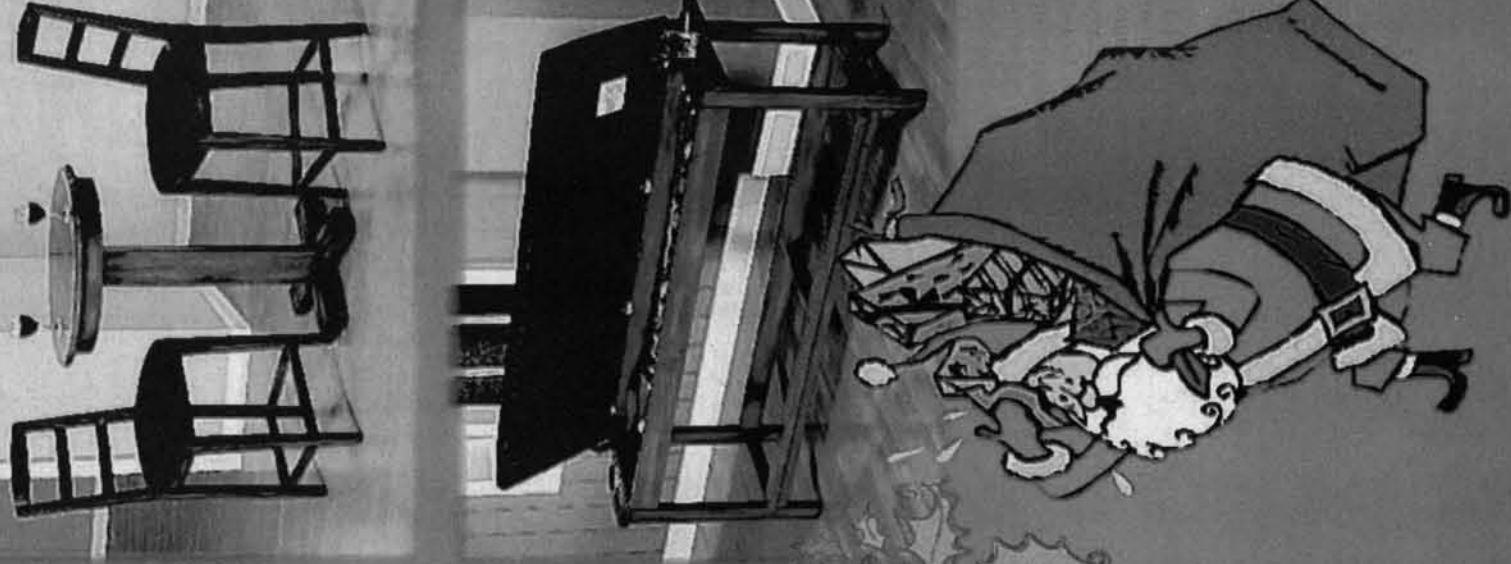


**\$399**



**(302) 322-5252**

**atlantisspasandpools.com**





# Harris brings years of experience

## ► SCHOOLS, from 1

cation reform.

She has more than 20 years of experience as a communications and development professional, working with a diverse client base from health care and social service organizations to public and private schools of varying size, network officials reported.

A former annual giving officer at Children's Hospital of Michigan, Harris coordinated hundreds of special events, as well as telethons and marketing efforts.

As a senior development writer/media relations specialist for Northeastern University in Boston, Harris was charged

with coordinating annual fund and capital campaign communications for the university.

Locally, she has worked with a number of nonprofits on recruitment campaigns, communication assessments, development assessments, volunteer training, special events production and helping organizations reach their development goals.

Harris was a founding board member of a charter school in Pennsylvania and consults with charter school incubation and staff development projects.

Harris graduated from Miami University in Oxford, Ohio, with a bachelor's degree in both English and communications and serves part-time as an adjunct instructor at the Delaware Technical and

Community College.

"This is exciting news for Delaware's charter schools and the families they serve," said Gregory Meece, the Delaware Charter School Network's director and board president. "Susan brings a wealth of experience to this position and shares the network's philosophy that charter schools are a valuable asset to improving education for all children throughout Delaware."

In addition to her work with charter schools, Harris has served as a fundraising consultant for MacIntyre Associates in Kennett Square, Pa.

Under Delaware's charter school law, which was adopted in 1995, charter schools receive operating money from the state

based on their enrollment, but do not receive money for facilities.

Although each charter school has its own academic program, their curriculum must align with

state content standards. Like state public schools, charter school students are required to participate in the Delaware Student Testing Program.

# We are all ambassadors

## ► SISK, from 6

economic and personal freedom. The resolution of a routine legal matter in an American court where real justice is done is at least as good an argument for our way of life as the blue jeans, big Macs, rap music and other exports that the world receives. The successful resolution of a legal entanglement is taken to heart by the student, and reported back home.

Professor Villamarin was a prominent example, but there is a legion of people who house, feed, instruct and help foreign students in Newark. For instance, my friend and former band mate Doug Baker, a machinist at the University of Delaware, who does his part as a guide to the more subtle turns of American popular culture was once asked by a foreign graduate student, with great politeness and solemnity: "Douglas, was Shemp before or after Curley?" (Extra

credit if you know).

Professor Villamarin was an ambassador in the most direct sense.

But the rest of us are still ambassadors, in some sense. We speak directly to people from other countries and cultures through our words and actions, unfiltered by governments and political agendas.

At the end of the day, the city doesn't have a foreign policy. But citizens do.

## Locust Point Farm

Fresh Natural Turkeys

Taste the Difference!

**ORDER NOW!**  
**410-398-8766**



## The Baltazar Women's Medical Center

Gynecology  
Since 1978

and Dr. Rodney Baltazar  
proudly announce  
the affiliation of

**Dr. Milan Baltazar**

She will practice GYNECOLOGY  
at her new location in the  
Weight Loss M.D. office.



1269 Quintillio Drive  
Governor's Square II Shopping Ctr, Bear, DE 19701  
**(302) 595-2987 • (410) 398-6925**  
Cell: 443-350-1554

# THE NUTCRACKER

*A Holiday Treat for the Entire Family*  
Presented by

## Mid-Atlantic Ballet

**December 12th, 7pm**  
**December 13th, 1pm & 4pm**  
**Mitchell Hall Theater**  
**University of Delaware**

Order tickets online: [www.ticketmaster.com](http://www.ticketmaster.com)  
By phone: 302-984-2000 or  
At the UD Box Offices located at the  
Bob Carpenter Center & Trabant Center  
Tickets: \$15, \$22 or \$27

Photo by  
Tisa Della-Volpe

For information call the MAB Studios 302-266-6362 or visit  
[www.midatlanticballet.org](http://www.midatlanticballet.org)

Enjoy a 19th Century Christmas  
Chesapeake City, Maryland

## Candlelight House Tour

**December 13, 2008**  
**6-9pm**

Caroling, Unique Displays, Charming  
Homes, Carriage Rides

### CHESAPEAKE CITY CANDLELIGHT HOUSE TOUR

**\$10 Advance • \$15 door**

Choral Concerts in Trinity Methodist Church during the tour.  
For advance tickets and information call:  
Mary Ioppolo (443) 553-0071 or  
Christine Mullen (410) 885-2781



## Holiday Cook & Care show

Parenting Magazine and Young Chefs Academy are teaming up to host a free, nationwide Holiday Cook & Care event. The special even will be held at more than 100 Young Chefs Academy franchises across the country, including academies in Newark/Pike Creek and Middletown.

Young Chefs Academies provide young chefs and a parent the opportunity to learn

family-friendly recipes and valuable kitchen skills. The two-hour events from 11 a.m. to 1 p.m. will consist of five stations, each offering instruction on a different recipe or activity.

For more information, contact the Young Chefs Academy in Wilmington at 234-2800.

## Fire department Christmas tree sale

Aetna Hose, Hook and Ladder Co. is sponsoring its

annual Christmas tree sale with fresh Douglas Firs and Concolor trees. Hours are Monday through Friday from 6 p.m. to 10 p.m., Saturdays and Sundays from 10 a.m. to 10 p.m. Trees start at \$35 and are available at 2505 Old Country Road in Newark. Free local delivery is also available. For more information, please call 261-7756.

## Nominations accepted for women's hall of fame

The Delaware Commission for Women (DCW) is now accepting nominations for the 28th annual Hall of Fame of Delaware Women.

The Hall of Fame honors Delaware women for their contributions toward improving the lives of others. More than 100 women have been inducted into the hall, representing a variety of fields including government, medicine, business, education, law, advocacy and volunteerism.

The deadline for submission is Dec. 12. Nominees must be native-born Delawareans or residents of the state for at least 10 years. Nominations must be submitted on a form provided by the Delaware Commission for Women and may be obtained via mail, e-mail or the DCW Web site [www.commissionforwomen.delaware.gov/](http://www.commissionforwomen.delaware.gov/).

For more information, please

call the DCW at 577-5287 or e-mail Carmen Gomez at [Carmen.Gomez@state.de.us](mailto:Carmen.Gomez@state.de.us).

## Historical society to ring bells for Salvation Army

Members of the Newark Historical Society will be ringing bells with The Salvation Army during the holiday season.

Members will be manning collection pots outside of K-Mart in the College Square Shopping Center and Shop Rite in the Chestnut Hill Plaza Shopping Center on Dec. 15, as well as Sears in the College Square Shopping Center on Dec. 23.



**Pure Soles**  
Wellness Studio

30 - 60 minutes will  
Improve the Quality of Your Life

- Ionic Cleansing • Energy Balancing (Chi)
- Far-Infrared Rejuvenation

"We take the Bad out and put the Good in"

280 E. Main Street, Suite 116, Newark, DE 19711  
(Behind Newark Natural Foods)  
302-731-7733

Tues. - Thur.: 12 p.m. - 7 p.m.  
Fri.: 12 p.m. - 8 p.m.  
Sat.: 10 a.m. - 8 p.m.  
Closed Sun. & Mon.

E-mail - [puresoles@verizon.net](mailto:puresoles@verizon.net)



**Complete Eye Care**  
(302) 368-9105

**DELAWARE EYE CARE CENTER**

*Specializing in:*

- Comprehensive Eye Exams and Diagnostic Evaluations
- No-stitch, No patch Cataract Surgery
- Eyeglasses and Contacts
- Glaucoma Evaluation and Treatment
- Treatment of Diabetic Eye Diseases
- Retina Evaluation and Treatment
- Viss Custom-Vue LASIK & Epi-LASIK

*We accept Superior Vision, VSP, VBA, Davis and most other insurance plans.*

**5 convenient locations to serve your eye care needs**

<b>Dover</b> 833 S. Governors Ave. (302) 674-1121	<b>Newark</b> 533 E. Main Street (302) 368-9105	<b>Bear</b> 1721 Pulaski Hwy. (302) 836-5410
<b>Milford</b> 110 N.E. Front Street (302) 422-5155	<b>Smyrna</b> 10 S. Market Street (302) 653-9200	

[www.delawareeyecare.com](http://www.delawareeyecare.com)

## BLOTTER, from 2

An unknown suspect spray painted the exterior wall of the Century 21 Office in the 200 block of East Main Street between 7 p.m. on Nov. 25 and 7 a.m. on Nov. 26. Damages were estimated at \$50.

## Noise and Alcohol

Eduardo Medina, 26, of Wilmington, driving under the influence, 800 block of South College Avenue, 3:34 a.m. on Nov. 20.

Christopher M. Goldyn,

19, of Wilmington, underage consumption and open container; Kevin J. Lenoir, 21, of New Castle, open container; Bryan Hinderer, 19, underage consumption; Cider Mill Court at 11:16 p.m. on Nov. 28.

Police charged 58-year-old Newark resident Charles W. Stahl with driving under the influence at 1:11 p.m. on Nov. 29, after he drove his 2002 Chevrolet Corvette into a tree on Shenandoah Drive.

Aafke K. Lazar, 21, of Newark, noise violation, 3200 block of Wollen Way, 1:38 a.m. on Nov. 29.

Brittney A. Campli, 22, of Newark, disorderly premises, unit block of North Chapel Street, 2:25 a.m. on Nov. 29.

Emily E. Kuder, 23, of Newark, disorderly premises, 700 block of Elkton Road, 12:33 a.m. on Nov. 30.

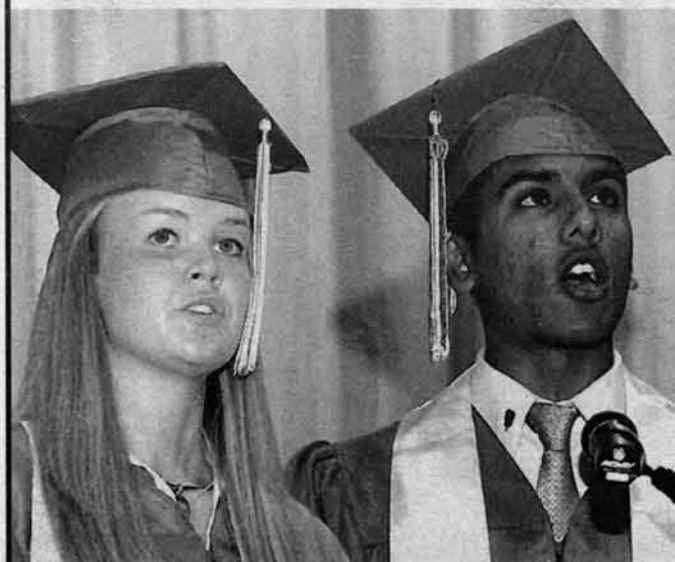
Daniel Mazaika, 28, of Middletown, Del., underage consumption, Elkton Road and Christiana Parkway, 2:33 a.m. on Nov. 30.

Melissa R. Olsen, 20, of Wilmington, underage consumption and driving under the influence, Elkton Road, 3:54 a.m. Nov. 30.

■ Local obituaries are posted on the Newark Post Web site. Obituaries of the following persons will be posted this week:

John Choma  
Lorraine D. McDowell  
Gloria H. Stieska  
Annabelle Rue Welch

## Saint Mark's: Educating Tomorrow's Leaders Today



## ENTRANCE TEST Saturday, December 6

- Best value in Catholic or private education
- Academic levels to meet the needs of each student
- Largest Advanced Placement Program in Delaware
- 97% of graduates go to college with millions in scholarships each year
- Arts, athletics, clubs and service organizations
- Scholarships and Financial Aid



[www.stmarkshs.net](http://www.stmarkshs.net) • 302.757.8721

## FROM YOUR MIND \* TO DESIGN!

WE SPECIALIZE IN  
FLATTERING CUSTOM MASTERPIECES

## Jewelry Need Fixed?!

All About Jewelry offers expert, affordable jewelry repairs!

Custom Jewelry On Sale for your holiday needs.

## All About Jewelry

4538 Kirkwood Highway • Wilmington, DE 19808  
Intersection of Limestone Road, next to Shell Station  
302-996-9350

[www.AllAboutJewelryInc.com](http://www.AllAboutJewelryInc.com)

## QUALITY SERVICE YOU CAN DEPEND ON

- Brakes • Auto Inspection • Electrical
- Suspension Systems • Transmissions
- Differential 4x4 • Fuel Injection • Engine Repairs

## PETE'S GARAGE

## FLEET & DIESEL REPAIR

**302-286-6069**

SERVICING THE BEAR & NEWARK AREAS

Chrysler • Jeep • Dodge Specialist

707 Dawson Dr., Newark, DE

[www.fixyourcarnow.com](http://www.fixyourcarnow.com)





# Annual Holiday! One Day Sale!

## 25% OFF EVERYTHING

Saturday, December 6th, 2008

9am - 9pm

Wide selection of puppies, kittens,  
reptiles, birds, rabbits, hamsters, fish  
and other small animals.

Supplies and food for all  
your pets' needs

**Pet Kare**  
*We Care About Pets*

**PET KARE I**

**302-832-8775**

Route 40 just west of Route 7

201 Governor's Square Shopping Cnr., Bear

*2 Convenient  
locations  
to serve you!*

**PET KARE II**

**302-733-0740**

Route 72 just south of Route 4

250 Pencader Plaza, Newark





S S  
t t  
o u  
c f  
k f  
i e  
n r  
g s

**GIFT  
CERTIFICATES  
2009**

**Hand-wrapped gifts show  
loved ones you care.  
We'll make sure they get there!**

**10% OFF**

(Except USPS)  
with this ad thru 12/31/08.

**DRIVE-THRU**

Mon-Fri 8:30-6 • Sat 9-2

**Call for Extended Holiday Hours!**

**MAILDEPOT**

Elkton - Next to Jake's on Bridge Street  
410-620-2021  
Fax: 410-620-2024

**MAILBAG<sup>plus</sup>**

North East - Across from Pat's on Rt 40  
410-287-5020  
Fax: 410-287-5135

[www.mailbagplus.com](http://www.mailbagplus.com)



**European  
Wellness Center™**  
A Health Spa

*Cecil County's Original Spa*

*Services include:*

- Hydrotherapy
- Facial Treatments
- Massage
- Body Treatments
- Manicures & Pedicures
- Reflexology & Reiki
- Full Service Hair Salon
- Make Up Services Including Custom Blended Makeup
- Airbrush Tanning
- AquaVida Detoxification Treatments



**Voted #1 - Best Spa - since 1999**  
**Facials & Skin Rejuvenation**

Gift Certificates  
Available

**243 S. BRIDGE ST. ELKTON**

**410-392-3535**

MON: BY APPOINTMENT;

TUES-FRI: 10AM-8PM; SAT: 9AM-5PM

[www.europeanwellness.com](http://www.europeanwellness.com)

*Gift Certificates are always the right color and fit!*



**DOG WASH**

[www.pamperedpetofelkton.com](http://www.pamperedpetofelkton.com)

**Full- or Self-serve  
Pet Wash**

**Full-Service  
Grooming**

**GIFT  
CERTIFICATES  
AVAILABLE**

**M.T.W.F. Sat. 9-7**

**Sun 9-5**

**Closed Thursday**

229 S. Bridge Street  
Elkton

**410-392-5588**

297864 112508

Dr. Linda Nguyen, DDS  
Dr. Junaid Chaudhry, DMD  
Dr. Amit Dua, DMD  
Dr. Aaron Poleck, DMD

**302.369.6900**

**CHRISTIANA  
DENTAL SPA**

Dental care with spa amenities.

*Receive the quality  
dental care you need  
and the pampering  
you deserve at*

**General and  
Cosmetic Dentistry**

*Delaware's first dental spa.*

[www.christianadentalspa.com](http://www.christianadentalspa.com)

Convenient evening and weekend  
appointments available.

**Village Imports Fair Trade Store**

**Shopping With a Social Conscience**

- Gifts • Clothing • Jewelry
- Fair Trade Chocolate • Coffee • Tea
- Home Décor

Mon. - Sat. 10-8, Sun. 12-5 with extended Holiday Hours  
165 East Main Street, Newark, DE (down Trader's Alley)

**FREE PARKING**



**302-368-9923**

[www.villageimports.com](http://www.villageimports.com)



Unique Gifts • Christmas Items

Religious Articles • Knick Knacks

Holiday Greeting Cards • Jewelry

**Can't make up your mind?**

Get a City Pharmacy Gift Certificate!

**City PHARMACY  
OF ELKTON, INC.**

**723 Bridge St., Elkton, MD**

**410-398-4383**

Open Weekdays 9am-9:30pm,  
Saturday 9am-9pm • Sunday 9am-6pm

**CHRISTIANA SKATING CENTER**

801 CHRISTIANA RD  
NEWARK, DE 19713  
302-366-0473  
[www.christianskatingcenter.biz](http://www.christianskatingcenter.biz)



**Home of The Best  
Private Birthday Parties**

**Holiday Skating Special**  
Buy 1 Admission  
Get 1 Admission FREE  
Any Special Holiday Skate Times  
12:00 to 3:00  
Dec. 26, 29, 30, 31 & Jan. 1 & 2  
With this coupon Only

**Learn to Skate  
Classes Every Saturday  
9:00 - 9:45**  
**Beginner to Advanced  
Includes Morning Public  
Session 10:00 - 1:00**

**FULLY STOCKED PRO SHOP • SKATING LESSONS  
BIRTHDAY PARTIES • FUND RAISERS  
PRIVATE BIRTHDAY PARTIES**

*Voted Best Birthday Party In Delaware Today Magazine*



**OPEN HOUSE: SUNDAY, 12/7, 1-5**

Tour the Conservatory • Demonstrations by Del Arts dancers and singers  
and a FREE Movement & Music class for our young guests.

**Delaware Arts  
Conservatory**

*Give the Gift of the Arts -  
the gift that never stops giving  
- for ALL ages!*

**A PERFORMING AND VISUAL ARTS SCHOOL**

Offering classes for all ages in Dance, Pilates, Yoga, Aerobics, Ballroom,  
Musical Theatre, Acting,  
Drawing, Photography, Jewelry Making, Voice, Piano, Drums, Guitar and more!

723 Rue Madora • Rickey Commerce Center • Suite 4

Bear, DE 19701 (behind Fox Run Shopping Center)

302-595-4160

[www.delarts.com](http://www.delarts.com)





# Stocking Stuffers

**GIFT CERTIFICATES**



## Give the gift of the YMCA!

- Available in any denomination
- Use them for membership, classes, camp, youth sports, child care, swim lessons ...

**YMCA**  
DELAWARE

Stop by any branch to purchase yours!

Bear-Glasgow Family YMCA Bear 836-YMCA  
Brandywine YMCA Talleyville 478-YMCA  
Central YMCA Wilmington 254-YMCA  
Central Delaware YMCA Dover 346-YMCA  
Sussex Family YMCA Rehoboth 296-YMCA  
Walnut Street YMCA Wilmington 472-YMCA  
Western Family YMCA Newark 709-YMCA

# Holiday season starts Friday

## ► WINTERFEST, from 1

3k walk/run while dressed as reindeers, according to officials from Special Olympics Delaware.

Members of the university's Greek organizations and other groups are also expected to line the course of both events with lights and shouts of encouragement.

Participants in both races who pay the entrance fee will receive a long-sleeve T-shirt, discount coupons from Main Street businesses and post-race refreshments.

Also during Winterfest, musician Libby McDowell will be performing holiday songs and Christmas carols at the Academy Building, along with students at the Newark Day Nursery and anyone who wants to join in for an open mic opportunity at 7 p.m.

Several Main Street businesses also have events planned in conjunction with Winterfest.

Bloom will host Philadelphia-based apparel designer Nicole Rae Styer,

Caffe Gelato will unveil its seasonal gelato flavors peppermint stick and bourbon eggnog and the Newark Arts Alliance will host an artists' reception as a part of its annual Holiday Art Market.

Even after Winterfest wraps up at 9 p.m., several more events and seasonal promotions will follow throughout the month.

The Downtown Newark Partnership is also sponsoring Wonderful Winter Wednesdays, during which local merchants offer retail and restaurant specials, with entertainment, prize drawings and free parking.

The Newark Cinema Center will be offering free admittance to special 11 a.m. matinees of holiday movies like "A Christmas Story" and "Miracle on 34th Street" every Saturday this month in exchange for canned or non-perishable food donations for the Newark Area Welfare Committee.

Minster's Jewelers will be hosting a coloring contest all month in which pre-schoolers and elementary school students can enter to win a sterling sil-

ver signet ring and a \$50 gift certificate to the jeweler.

Children also can purchase inexpensive gifts for family members during Santa's Secret Shoppe at the George Wilson Center from 9 a.m. to noon on Dec. 6.

The Newark Arts Alliance will host customer appreciation nights on Dec. 10 and Dec. 17 from 6 p.m. to 9 p.m. offering free gift-wrapping, hot cider, cookies and kids craft projects.

The Newark Free Library will hold three classes for children to learn to build their own gingerbread house with the Cooks and Bakers Club from Delcastle High School on Dec. 17, as well as a performance by the Newark United Methodist Church's Handbell Choir on Dec. 14 and Kwanzaa Story Time on Dec. 29.

Also this month, the Downtown Newark Partnership will be promoting its new commercial highlighting Newark shops while urging shoppers to say no to the mall.

The commercial can be viewed at the city's Web site [www.cityofnewarkde.us](http://www.cityofnewarkde.us).

**ELKTON DINER**  
RESTAURANT

OPEN 24 HOURS • 7 DAYS  
"Breakfast Anytime"  
Take Out Available  
Serving Beer & Wine

410-620-0500 • Rt. 40 • Big Elk Mall

Give the Gift of...  
**FOOD!**  
Everybody Eats!

Gift Certificates  
Available in any  
Denomination

**HOLIDAY SPARKLE!**

**40% Off**  
all fine jewelry  
with this ad.

**WE BUY GOLD!**

**Del Haven Jewelers**  
"The Jewelry Experts"

302-834-8500 • 140 Peoples Plaza, Newark, DE

296658-CW112508

## Your College. Your Success. Your Future.

I love the Accelerated Degree program at Cecil. I was very nervous about going back to school after almost 30 years. All the teachers and staff at Cecil are so supportive and helpful. I know I will walk across the platform in 2009 and receive my diploma.

**Sondra M.**  
Leadership and Management

Choose Cecil for a fresh start and opportunity to advance in the workplace. Take advantage of our **ONLINE** and **ACCELERATED** programs to work while you learn. **AFFORDABLE** tuition allows you to enjoy your education without worrying about your debt.

**REGISTER NOW • Spring classes begin January 20.**

**[www.cecil.edu](http://www.cecil.edu) • 410-287-1000**

Toll Free • 866-966-1001 • TTY • 410-287-2701

**CECIL COLLEGE**  **REAL STUDENTS. REAL SUCCESS.**



# Give the gift of the Arts!



Delaware *Arts*



Conservatory

A PERFORMING AND VISUAL ARTS SCHOOL

Offering classes for all ages in Dance, Pilates, Yoga, Aerobics, Ballroom, Musical Theatre, Acting, Drawing, Photography, Jewelry Making, Voice, Piano, Drums, Guitar and more!

## Holiday Open House & Home Business Expo

SUNDAY, DECEMBER 7, 2008 • 1 TO 5 P.M.

featuring: Mary Kay, Creative Memories, Homemade Gourmet, Perfect Moments by Donna, PartyLife Candles and Gifts, Tastefully Simple, Jewelry by Kim, Medic Alert Products, Laura Russo Jewelry Designs  
Demonstrations by DelArts dancers and singers and a FREE movement and music class for our young guests!

Admission  
is Free!

723 Rue Madora • Rickey Commerce Center • Suite 4 • Bear, DE 19701 (behind Fox Run Shopping Center)

302-595-4160 • [www.delarts.com](http://www.delarts.com)

# Peoples Plaza Christmas Celebration!

Saturday, Dec. 6, 10 am to 4 pm • Inside the "North Pole"  
(Across from the movie theatre)

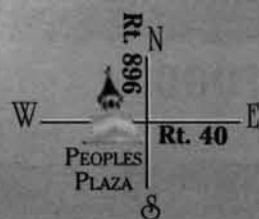
Santa & Mrs. Claus arrive at 10 am

### FUN ACTIVITIES ALL DAY INCLUDING:

Live interactive Radio Disney-hosted Show 12:30-2 pm  
Pictures with Santa and Mrs. Claus, Rudolf and Frosty  
Remote-control Car Races • Puppet Shows Face Painting  
Story-telling • Trolley Rides  
Horse and Carriage Rides

### REFRESHMENTS

Performances by Caravel Academy Carolers  
and New Castle Dance Academy



Bring this  
coupon for  
**FREE**  
Christmas  
ornament!



# Sports

HIGH SCHOOLS UNIVERSITY OF DELAWARE • LEAGUES

## Newark High boys hoops gets new coach

By JON BUZBY

JONBUZBY@HOTMAIL.COM

For most high school basketball teams, November 14 marked the much-anticipated first day of winter practices. The familiar sounds of bouncing basketballs, squeaking sneakers and blaring whistles could be heard in the local gyms throughout the area. But for the Newark High School boys' basketball team, that day also brought with it an unexpected coaching change.

It was recently announced

that Greg Benjamin Sr., who last year coached the Yellowjackets to the state tournament championship game (a 53-50 loss to Caravel), has been relieved of his head coaching duties.

"I cannot comment on the situation since it is a personnel matter," said Curtis Bedford, the principal at Newark High School. "Kimpus Daniels is the acting head coach."

Benjamin held the varsity head coach position for the past 13 seasons after serving as an assistant coach at Christiana High School for five years.

In addition to last season, he led his Newark team to the state finals in 1997 and 2001. Benjamin remains listed on the school's Web site directory as "Dean of Students, A-M."

"Daniels is still the acting coach," said Daniel E. Cruce, assistant superintendent and chief of staff for the Christina School District. "Benjamin is currently an employee of the district. We can provide no additional comment on Benjamin as it is a personnel matter."

Daniels, a supervisor for the State of Delaware Department

of Corrections, began his basketball coaching career with the U.S. Army while stationed in Germany. Since then he has coached a variety of sports at different levels before landing at Newark, where he was the freshmen coach before taking over the junior varsity position under Benjamin in 1994.

"The players are responding well to the change because I was selected to take over in coach Benjamin's absence," Daniels said when asked how the players were responding to the coaching change. "I would like to thank Curtis Bedford

and [assistant principal] Mike Scott for naming me as acting head coach."

Benjamin's son, Greg Benjamin Jr., is one of three returning starters from last year's 19-8 team. Andrew Smith and Leyland Tait have also returned for the Yellowjackets.

"We have to try and replace the starters that graduated and some players currently injured," Daniels said. "I'll be starting with a lot younger team than last year."

Newark opens their season on Dec. 6 at Tatnall.

## St. Mark's wrestling team opens Saturday

27-26.

That's what the St. Mark's wrestling team remembers from last year.

The Spartans were on the losing end of that score to Caesar Rodney in the state semifinals and a season that started with such promise ended with the Riders dancing around the mat in celebration.

St. Mark's returns a highly touted lineup and hopes to capture its first state championship in six years. The Spartans also hope to vanquish that memory from last year.

"In terms of the loss last year it is so important to learn from the past and have that make you a better wrestler, teammate, coach and athlete," Bastianelli said. "Last year's one-point loss still burns and as a team we are focusing on securing bonus point wins from day one. Also the team understands we must make our own breaks... the easiest way to do this is get on the attack stay on the attack and constantly look to rack up points and go for the pin."

The season gets underway Saturday at the Boyertown Duals but the team will be missing two of its top wrestlers. Injuries will keep two-time defending state champion Sean Dolan and state-runnerup Ty Snook out of the lineup Saturday.

"Last year at Boyertown we started with perhaps our strongest line-up of the season in terms of having DeMasi in there and the two Sean's up a weight class," said St. Mark's

coach Jay Bastianelli. "This year we will be a little banged up to start the season but hopefully we will be able to end it at full strength and at our best."

This year's lineup will be led — along with Dolan and Snook — by defending state champion Sean Boylan. Boylan finished last year with a 45-1 record.

"Boylan has really stepped-up his leadership in the pre season," Bastianelli said. "Boylan has set a goal of being ranked first in the nation and Asics First Team All American. He will be going 112 the whole season and I really think he can accomplish that goal if he continues with the same passion and attention to detail he has possessed so far."

Dolan was 33-5 last year and won his second straight state title. After winning at 103 as a freshman and 112 as a sophomore he is expected to wrestle at 119 pounds this season.

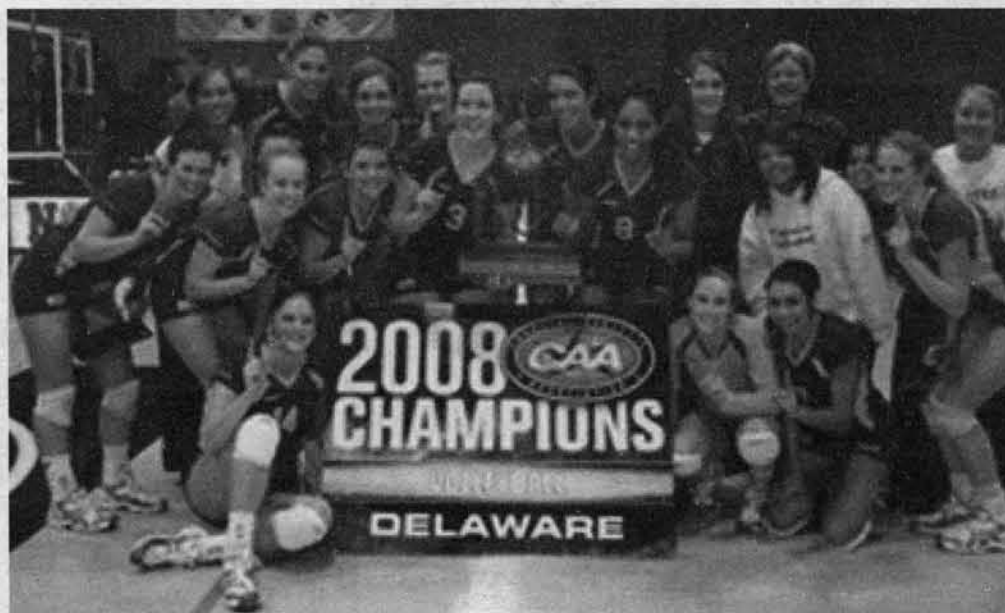
Snook posted a 32-12 record last season and finished second in the state, only losing in the final to Caesar Rodney's Alex Meade, who is now wrestling at Oklahoma State.

Other returning state place winners include Corey Olsen (36-3 and placed third at 215) and Josh Snook (39-15 last year and finished third in the state at 125).

Highly-regarded newcomers to the Spartan lineup include Matt Buckworth (fourth in the state at 125 last year) and Nick Schenk (90-5 career record and former National Prep and Beast

See SPARTANS, 20 ►

## UD VOLLEYBALL TEAM IN NCAA TOURNAMENT



Behind an incredibly gutsy performance and a never-say-die attitude, the University of Delaware volleyball team pulled off a thrilling 3-2 (25-21, 20-25, 28-30, 25-11, 15-13) victory over Northeastern in the Colonial Athletic Association title bout at Solomon Court last week to advance the NCAA Tournament. The Blue Hens will face No. 11 Oregon in a first round match Friday at 5 p.m.

Delaware (19-15), which is making its second straight trip to the NCAA Tournament, will take on Oregon (23-8) at American University's Bender Arena.

The 64-team field was announced live on ESPN Sunday evening. Undefeated and defending NCAA champion Penn State (32-0) earned the top seed in the tournament.

In the other regional game, host American University (24-8), the Patriot League champion, will take on the University of North Carolina (21-10) at 7 p.m. on Friday. The winners will advance

to play each other on Saturday at 6 p.m.

Delaware enters the NCAA Tournament having won seven of its last eight matches. Last week, the Blue Hens defeated Towson, Virginia Commonwealth and Northeastern in the CAA Tournament to capture their second straight conference crown.

Oregon, which was ranked as high as No. 6 nationally this season, finished fourth in the Pac 10 regular season standings with an 11-7 mark. The Ducks, who have posted their best record since 1983, are coming off a 3-1 win over No. 7 California Friday night, their sixth win over a Top 25 team this season.

Delaware is led by two-time CAA Defensive Specialist of the Year Steph Barry, who ranks 11th nationally with a 5.38 digs-per-set average. Offensively, the Blue Hens are anchored by a pair of All-Conference selections in Katie Dennehy and Kim Stewart. Head coach Bonnie Kenny was also named the CAA Co-Coach of the Year.



FINE ART  FRAMING  
622 NEWARK SHOPPING CENTER • NEWARK, DE 19711

# HARDCASTLE'S NEWARK

SINCE 1888

- Custom Framing
- Sculpture
- Commissions
- Paintings
- Ceramics
- Appraisals
- Reproductions
- Consulting
- Restorations

www.hardcastlesince1888.com  
hardcastlesnewark@yahoo.com

738-5003

# RED LION

CHRISTIAN ACADEMY

**OPEN HOUSE DATES:**  
12/11/08 • 1/13/09 • 2/19/09 • 3/19/09 - 9am  
**Call to register!**



- Integration of Biblical truth in curriculum
- College Prep with Honors and AP courses
- Before/After Care available
- Bus Transportation
- New athletic stadium and on-site media center
- Learning Support Program
- Comprehensive extra-curricular activities and Fine Arts program
- Member of Delaware Interscholastic Athletic Association (DIAA) offering football, field hockey, lacrosse, soccer, golf, basketball, volleyball and more
- Excellent student/teacher ratios
- Overall average Standard Achievement Test scores of 73% (above national and DE averages)
- Homeschool options for 6-12<sup>th</sup> grade



1390 Red Lion Road, Bear, DE 19701



**(302) 834-2526**

www.redlionca.org



Something terrible happens when you don't advertise...Nothing! Call 737-0724 to place an ad.

# C & D Furniture

Quality Furniture by  
Amish Craftsmen

Playsets • Lawn Furniture • Bedrooms • Dining Rooms  
Desks • Tables & Chairs • Hutches



**COUPON**  
**25<sup>00</sup>** off any  
non-sale item  
of \$150 or more

Coupon expires 12-31-08

**1-866-386-2572**

**Rt 213, Chesapeake City, MD**

3 miles So. of the Chesapeake City Bridge at the 2nd Light



# Women Medical Care

Obstetrics and Gynecology

*Inspiring Women to Wellness*

Board Certified Physicians Accepting New Ob & Gyn Patients

- 3D Ultrasound in Office
- Normal Pregnancies
- High Risk Pregnancies
- Infertility
- Gynecologic Surgery
- Laparoscopy
- Menopause
- Urinary Incontinence
- Pelvic Pain
- Accept Most Insurances



Maryam Awan, MD & Zahid Aslam, MD

**410-398-0590**

111 West High Street, Suite 207, Elkton, Maryland 21921  
266 South College Avenue, Newark, Delaware 19711

# Escape completely.



7-day Alaska cruise.

Discover the definition of "escape."

FARES FROM **\$809**

- Unequaled dining - Choose traditional or flexible Anytime Dining™
- Unsurpassed Service - Providing an unforgettable escape
- Unparalleled fleet - Big Ship variety with a Small Ship Feel™
- Unforgettable views - More affordable balconies



**PRINCESS CRUISES**  
escape completely™

The Cruise Shoppe

250 E. Chesnut Hill Road, Suite 2, Newark DE 19713

**302.737.7220 www.cruiseshoppe.us**

A Fuel Supplement of \$5 per person per day, up to a maximum of \$105 per person, is included in fares shown, and subject to change. Please contact Princess Cruises for third-fourth berth fares and fuel supplements. Government fees and taxes are additional. Air add-ons are available. See applicable Princess brochure for terms, conditions and definitions that will apply to your booking. Offer available to residents of U.S. and Canada. ©2008 Princess Cruises. Ships of Bermuda registry.

# Spartans start at Boyertown

► SPARTANS, from 19

of the East champion).

Other wrestlers returning with starting experience include sophomore Michael Mauk, junior Bobby Telford, senior Brian Mey, junior Nick Shaw, sophomore Tyler Pendergast, junior Danny Maguire, sophomore Michael Valania, sophomore Joel Mey, senior Matt Karpinski and senior Beau Callery.

Other newcomers expected to help the team this year include freshman Jay Matheus and sophomore Patrick Cassidy, who was a state qualifier last year at Caravel.

Additional wrestlers that coach Bastianelli expects to contribute this year include junior D.J. Fasick, senior Cory Sterin, junior Chris Shaw and senior Andrew Lehman.

The projected lineup by weight looks like this:

- 103 - Pendergast
- 112 - Boylan
- 119 - Dolan
- 119 - Valania
- 125 - Nick Shaw
- 125 - Fasick
- 125 - Maguire
- 130 - Schenk
- 135 - Buckworth
- 140 - Josh Snook
- 145 - Matheus
- 152 - Callery
- 152 - Sterin
- 160 - Mauk
- 171 - Ty Snook
- 171 - Brian Mey
- 171 - Chris Shaw
- 171 - Lehman
- 189 - Joel Mey
- 215 - Olsen
- 285 - Telford
- 285 - Karpinski
- 285 - Cassidy

"At a few weights our depth is ridiculous," the coach said. "To have Telford, Karpinski, and Cassidy all at heavyweight is a coaches dream. I feel at a few weight classes we have the possibility to have multiple state place winners at one weight class."

After Boyertown, the Spartans will compete in the Ray Oliver Tournament next week at McDonough in Baltimore and then the Beast of the East the week after at the Carpenter Center.

Imaginative  
Japanese Cuisine

# Okura

Open 7 Days A Week  
www.okurarestaurant.net

Tatami Room • Sushi Bar • Cocktails  
Catering • Private Parties • Take-Out

Wellington Plaza  
703 Ace Memorial Drive  
Hockessin  
302.239.8486  
Fax 302.239.6892

(On Rt. 41 N. 1/2 mile from  
Wawa, next to Toadstool)

Lunch: Mon. - Sat. 11 a.m. - 2:30 p.m.  
Dinner: Mon. - Thurs. 4 p.m. - 10 p.m. • Fri. & Sat. 4 p.m. - 11 p.m.  
Sun. 3 p.m. - 10 p.m.





# Decorate your home for the Holidays!

with quality furniture from Jodlbauer's.



## Recliners

Rocker Recliners, Glider Recliners,  
Swivel Recliners, Wall Saver Recliners  
**Lazyboy, Lane, Berkline**

Most Comfortable, Best names in the industry  
Textures, velvets, microfiber, leather  
**Over 50 recliners on display**  
Reg. \$599 - \$1499

*Now*

**\$298-\$398-\$498-\$598**



## Latest

## Fashion Sofas

Quality Manufacturers  
**Lane, Lazyboy, Broyhill,  
Klaussner, Wesley Hall,  
Flexsteel**

Every style, every fabric  
Reg. \$999-\$1999

*Now*

**\$698-\$898-\$1198**

**Buy Now...save now...enjoy now!**  
**No payments... no interest charge til 2009**



**Howard Miller  
Grandfather Clocks**  
every clock-  
Nothing held back

**1/2 Price**



**Sectional Sofa**

**\$999**



**TV STANDS &  
ENTERTAINMENT  
CENTERS**

Prices start at  
**\$399**

**Counter Height  
Fashion Dinettes**  
5 piece Tile Top Dinette  
Butter Fly extension  
table 4 slat back stools

**\$798**



**6 Piece  
Computer  
Work Station  
Sale \$1998**

## Lazyboy Fashion Sofas



Cushion plush  
seats

**\$798**



Microfiber fabrics inverted  
shaped back

**\$598**



901 E. Pulaski Hwy., Rt. 40, Elkton  
410-398-6201



Business Office 410-398-6200



701 E. Pulaski Hwy., Rt. 40, Elkton  
410-398-5402



# Where ya gonna eat?

**ASK ABOUT OUR DAILY SPECIALS**

**WE DELIVER!** Ask Your Server About Our Catering Menu

**NICK & JOE'S**  
Family Owned & Operated Since 1975

**EXTENDED DELIVERY AREA** Ask For Details

**CHECK OUT OUR NEW ITEMS INSIDE**

OPEN 7 DAYS DINE-IN • TAKE OUT

413B NEW LONDON RD. (RT 896) • NEWARK, DE

**COUPON**  
2 LARGE CHEESE PIZZAS  
1 TOPPING EACH  
**\$18.95**

**FAIRFIELD SHOPPING CENTER**  
(NEXT TO SUPER FRESH)

**(302) 292-3736**

**COUPON**  
1 LARGE CHEESE PIZZAS  
WITH 3 TOPPINGS  
**\$12.00**

Limited time offer. See Delivery. Not to be combined with any other offer. Please contact coupon when ordering. MON & TUE 11:00-10:00 PM

**The Cereal Bowl**

181 East Main Street  
Newark, DE 19711  
302-737-4001

**WiFi**  
FREE ZONE

**\$1.00 OFF**  
when you present this coupon

[WWW.THECEREALBOWL.COM](http://WWW.THECEREALBOWL.COM)

**OPEN 24 HOURS**

**IronSkillet**  
AMERICA'S CHOICE FOR HOMESTYLE COOKING

Breakfast, Lunch & Dinner Buffet Served Daily

**Purchase One Dinner Entree & Get One 1/2 Price**

One coupon per customer  
Excludes any manager specials or in house promotions  
Coupon expires December 31, 2008

I-95 & MD 279, ELKTON, MD **410-392-3052**

**PETRO**  
Sleeping Centers  
The Quality Difference

• Full kids meal  
• Senior discount

**GRAND OPENING!**

**Little Leo's**  
Subs & Steaks

**Buy One Sub/Steak And Get 2nd 1/2 OFF**  
Offer Expires 12/31/08

**Party Platters 10% OFF**  
Orders Over \$50.00

Mon. - Fri.: 10 a.m. - 8 p.m. • Sat. 10 a.m. - 6 p.m. • Sun. 11 a.m. - 6 p.m.

700 Kirkwood Highway  
8 Liberty Plaza/Possum Park Mall  
Newark, DE 19711  
Fax: 302-533-7265

**(302) 533-7249**

Mention this ad for above discounts

**Amici's**  
Fine Dining & Spirits

Minutes from Newark

**Wonderful Wednesday Wines**

**\$20 Bottle of Wine**

**Live Jazz Friday Nights**  
9:30 P.M. - 12:30 A.M.

Mon. - Thurs.  
4 P.M. - 10 P.M.  
Fri. - Sat.  
4 P.M. - 11 P.M.

Reservations Recommended  
(610) 255-5777

1215 New London Road  
(Route 896)  
Landenberg, PA 19350  
[www.amicislandenberg.com](http://www.amicislandenberg.com)

Kids eat FREE Mon-Fri 1pm-5pm

**Rudy's Italian Family Restaurant**

Beautiful NEW Dining Room • Take Out & Catering

Online ordering now available  
[www.rudyspizzaitalian.com](http://www.rudyspizzaitalian.com)

\$5 off w/ any online purchase of \$20 or more

**QUICK DELIVERY**

**COCKTAILS WINE • BEER**

Four Seasons Plaza  
Newark, DE  
(612 Plaza Drive near Super Fresh)

Hours: Mon.-Thurs. 10 a.m.-10 p.m.  
Fri. & Sat. 10 a.m.-2 a.m.  
Sunday 11 a.m.-10 p.m.

Ph: (302) 737-4150  
Fax: (302) 737-4140

**50% OFF**  
Any meal with purchase of equal or greater value  
Coupons May Not Be Combined

**Home Grown Cafe**  
Local Flavor

Now serving  
**Brunch**  
ALL WEEKEND LONG  
Saturdays & Sundays 10 AM - 2 PM

**10% OFF your brunch bill**  
valid Dec. 6, 7, 13 & 14, 2008  
at our bar or dining room

Must be seated between 10 AM - 2 PM. Present coupon when ordering. Not valid with any other coupons or discounts. Not valid on alcohol.

**Home Grown Cafe**

126 E. Main Street, Newark • 302.266.6993  
[www.homegrowncafe.com](http://www.homegrowncafe.com)

Visit us online at [www.newarkpostonline.com](http://www.newarkpostonline.com)

To place an ad on our restaurant page,  
please call (302) 737-0724  
to speak with an account executive.

**NEWARK POST**  
Greater Newark's Hometown Newspaper Since 1910



# Get all the stories at [newarkpostonline.com](http://newarkpostonline.com)

## ► UPFRONT, from 1

online as our Web site traffic has increased six-fold since June.

Every week our police news gets a tremendous amount of readership online. Our University of Delaware sports coverage also gets high online readership.

Every once in awhile a story

like the Tubby-K.C. debate, or the one this week about code violations at the fraternity being pledged by the university student who died last month, causes huge spikes in readership.

In some cases, the most read stories online will get far more readership than they would ever get in our print edition. Some stories actually go in both, and

this makes our readership greater than it's ever been.

Our Web site — [www.newarkpostonline.com](http://www.newarkpostonline.com) — provides readers with the opportunity to get local news in a timely manner. Something that happens on a Monday or Tuesday can be read on a Monday or Tuesday. There is no reason to wait until Thursday or Friday to read it in the paper.

Things that happen on a Thursday or Friday — unless really big — have no shot of getting in the next week's print edition because by then they will be too old. Now, we cover those stories on our Web site.

The newspaper itself — because of costs associated with printing and delivering — has limited space. Sometimes we can't get all the news in there

that we would like. In the past, that news would never see the light of day. Now, it's all available on our Web site.

If you sign up for our e-mail alerts, we'll even send our latest stories to your inbox. Is this a great world or what?

So if you haven't checked out the Newark Post Web site yet, please do. You may be surprised by what you're missing.



**First Church  
of Christ,  
Scientist**

48 West Park Place, Newark

Sunday Service & Sunday School 10:00am  
Wednesday Testimony Meetings 7:30pm  
Childcare available during services.

302-456-5808

**ALL ARE WELCOME**  
[www.fccsnewark.org](http://www.fccsnewark.org)

**CROSSROADS BIBLE CHURCH**  
Home of Elkton Christian Academy  
144 Appleton Road, Elkton, MD  
410-398-2688  
Rev. Timothy W. Britton

Sunday  
Bible Study, 10:00 am  
Contemporary Service, 11:00 am  
Small Groups, 6:00 pm

Wednesday, 6-8 pm  
Dinner, Awana, Student  
& Adult Ministries

Enjoy a cup of gourmet coffee  
or cappuccino in our  
Common Grounds Cafe



**NEWARK WESLEYAN  
CHURCH**

708 West Church Rd  
Newark, DE  
(302)737-5190

Pastor James E. Yoder, III

Sunday School for all ages.....9:30am  
Morning Worship.....10:30am  
Children's Church & Nursery Provided  
Choir - Sunday.....5:30pm  
Youth Meeting - Sunday.....6:00pm  
Mid-Week Bible Study  
"A Family Church with a Friendly Heart"

You are welcome at  
**Ebenezer**  
United Methodist Church

SUN SERVICES 8:30 & 11:00am  
SUNDAY SCHOOL 9:45am

525 Polly Drummond Road  
Newark 302-731-9494  
Handicapped Accessible • Child Care  
TED DAY, PASTOR



The Episcopal Church Welcomes You

**St. Thomas's Parish**

276 S. College Ave. at Park Place, Newark, DE 19711  
(302) 368-4644 Church Office: (9:00-1:00 Mon-Fri)  
[www.stthomasparish.org](http://www.stthomasparish.org)

Sunday Worship

Sunday Service times: 8am, 10:30am & 5:30pm  
Sunday School begins at 9:30am  
Sunday Adult Education Programs 9:30-10:15am  
Fr. Paul Gennett  
Rev. Sarah Brockmann, Associate Campus Minister  
Marc F. Cheban, Organist & Choir Master

**Holiday  
Craft Show**

Friday, Dec. 5: Noon-7pm  
Saturday, Dec. 6: 9am-5pm  
Sunday, Dec. 7: Noon-4pm

featuring an  
Antique "roadshow"  
each day!

## Advertise Your Church in the Christmas Church Services Page

This Special Section will appear with spot color and  
appear in the paper on Dec 12th & Dec 19th.

Deadline is Dec 5th.

**Call Nancy Tokar for any questions  
or details at 1-800-220-1230**

## The Newark Post wants you to donate food and win prizes

The Newark Post has just added a third drawing in its readership contest benefiting Delaware Does More, a food and charity drive sponsored by the United Way and the Food Bank of Delaware.

Donating three cans of non-perishable food at the Newark Post's office

on East Main Street between now and February will now earn readers a chance to win prizes including Downtown Newark Partnership gift certificates and a three-month individual or family membership to any YMCA in Delaware.

Drawings for gift certificates will

take place on Dec. 18 and Feb. 5. A drawing for YMCA membership will be held on Jan. 15.

Downtown Newark Partnership gift certificates are redeemable at approximately 75 local businesses, while the free YMCA membership is good for all seven locations in the state.

Readers are encouraged to enter as often as they like.

The Newark Post is located in the Pomeroy Station at 218 E. Main Street, Suite 109. Hours are from 8:30 a.m. to 5 p.m. Monday through Friday.

For more information, please call Scott Goss at 737-0724.

**Happy Holidays**  
From all of us here at

**DAFFY DELI**

111 Elkton Rd  
**302.737.8848**  
OPEN 11AM-11PM DAILY  
DELIVERY UNTIL 10:30 PM

READING FUN AND  
GIFTS THE WHOLE  
FAMILY CAN ENJOY

Bring in this ad for a free  
comic book & 10% off your graphic novel purchase.

**Captain Blue Hen Comics**

Market East Plaza at 280 E. Main Street & Tyre Ave  
[www.captainbluehen.com](http://www.captainbluehen.com) 302-737-3434



Happy Holidays from

**McGlynns Pub &  
Deer Park  
Tavern**



8 Polly Drummond Ctr.  
Newark  
302-738-7814  
800 N. State St.  
Dover  
302-674-0144

108 W. Main St.  
Newark  
302-674-0144  
People's Plaza  
Glasgow  
302-834-6661

**DELAWARE  
EYE CARE  
CENTER**  
PROFESSIONAL ASSOCIATION

GARY I. MARKOWITZ, M.D.  
Board Certified Ophthalmologist  
EDWARD H. HU, M.D.  
JASON MOYER, O.D.  
HOLLY SALLOGA, O.D.  
KRISTEN M. SEMENICK, O.D.  
WILLIAM VELARDI, JR., O.D.

(302) 674-1995 or (800) 900-2020  
DOVER • NEWARK • BEAR • SMYRNA • MILFORD  
[WWW.DELAWAREEYECARE.COM](http://WWW.DELAWAREEYECARE.COM)

**Grotto Pizza®**  
the legendary taste®

FIVE DECADES ...

**ONE TRADITION**

of caring in our Delaware community



**NEWARK  
NATURAL FOODS**  
Your Corp Since 1975

**Shop Green  
this Holiday!**

Local | Organic | Fair Trade

302-368-5894 • [newarknaturalfoods.com](http://newarknaturalfoods.com)





# Posted

8 AM 5 PM 800-220-3311 410-398-1230

• Real Estate  
• Automotive  
• Help Wanted  
• Services  
• Merchandise

• YARD SALES  
• Auctions  
• Appliances  
• Furniture

See More on  
chesapeakeclassified.com

Fax us 24/7: 410-398-4044



## EMPLOYMENT

110 HELP WANTED FULL TIME

**DRIVERS - Class A, OTR flatbed, Earning potentials of 65K per year - min 2 years exp. Home weekends, BCBS ins. 401K, life ins. pd holidays /vaca. 410-620-4911**

**EMT/Driver/Firefighter** at Singlerly Fire Company, Elkton, MD. Full-time 12-hour shift available with benefits and vacation. 0600-1800, 4 on, 4 off. Must have valid driver's license with clean record, EVOC, Maryland EMT-B, NFPA 1011 FFII, and MFRI Pumps. Email one-page resume in Microsoft Word format to: singlerlycareer@comcast.net by Dec. 12, 2008.

110 HELP WANTED FULL TIME

## Kitchen Manager/Cook:

Newark non-profit child care center seeks manager who loves children, cooking, and being crucial team member to do menu planning, food preparation/cooking and oversight to ensure federal food guidelines met. Min. GED and institution cooking experience a must. Exp with CACFP program, child nutrition and menus a plus. M-F schedule. Benefit package includes health care, paid vacation and sick days, & 403(b) contributions. Contact: Send resume outlining experience to Caroline Barlow cabarlow@newarkdaynursery.org or fax to 302 738-8441 by Dec. 9th, 2009.

WWW.CHEESAPEAKECLASSIFIED.COM

110 HELP WANTED FULL TIME

## Post Office Now Hiring!

Avg. pay \$20hr., \$57k yr. incl. Fed. benefits, OT. Placed by adSource, not affiliated w/USPS who hires. 1-866-475-2907

## Are You Ready To Fill These Shoes?



Check Our Classified Pages Everyday For The Latest Job Opportunities Let Chesapeake Classifieds Work For You!

110 HELP WANTED FULL TIME

## RESTAURANT DENNY'S Now Hiring: Cooks, Servers, Host / Hostess, Service Assts.

Denny's is seeking customer service oriented, dependable Cooks, Servers, Hosts/Hostesses and Service Assistants on all shifts, full & part time, at our restaurant in Newark. Earn top pay, good benefits for FT & PT, paid vacation, 401(k), growth opportunity and more. EOE. Apply in person: 1-95 & Hwy 273, Newark, DE.

RID YOUR HOME OF ALL THAT CLUTTER! HAVE A YARD SALE AND ADVERTISE IT WITH US!

**OGLETOWN BAPTIST CHURCH**  
316 Red Mill Rd., Newark, DE 19713  
Phone: 302-737-2511 • Fax: 302-737-4356  
www.ogletown.org  
Sunday Services:  
10:30am - Traditional  
9:00am - Contemporary  
Sunday School at both service times  
Dr. Curtis Hill  
Associate Pastor: Stan Gibson  
Director of Collegiate Ministry: Emily Troutman  
Minister of Preschool & Children: Connie Zinn  
302-738-7630

**LIVE NATIVITY PROGRAM**  
December 14, 3:30-4:30  
**BOHEMIA REFORMED EPISCOPAL CHURCH**  
284 Great House Farm  
Log Cabin Church  
Chesapeake City, Maryland  
Music, Refreshments, and Animals Supplied  
Children Wanted  
410 885 2326  
bigrabbit@atlanticbb.net

## Christmas Church Services Page

This Special Section will appear with spot color and appear in the paper on Dec 12th & Dec 19th.

Deadline is Dec 5th.

Call Nancy Tokar for any questions or details at 1-800-220-1230

**PIKE CREEK BIBLE CHURCH**  
SUNDAY MINISTRIES:  
• First Service 8:30 am  
• Christian Education 10:00 am  
• Second Service 11:15 am  
• Awana 5:30 pm  
• Youth Ministries 5:30 pm  
Small Groups throughout the week  
www.PikeCreekBibleChurch.org  
199 Polly Drummond Hill Rd.  
Newark • 302-731-7770

**Evangelical Presbyterian Church (PCA)**  
Christ Centered • Biblically Based  
Sunday Worship 10:45am & 6pm  
9:30 Sunday School  
308 Possum Park Rd., Newark  
302-737-2300  
www.epcnewark.org

**BRUNCH**  
Sat., December 6, 2008  
Holiday Reflections for all women and girls at Evangelical Presbyterian Church  
Janet Dixon, artist and former Delaware resident, will be our speaker.  
For reservations contact 302-737-2300  
Cost is \$5

"We get more hits from this one ad than any other advertising we do."  
- Rev. Jay - Good Shepherd Episcopal Church  
Call Nancy Tokar to place your ad at  
1-800-220-1230

The Birthday Celebration of the Year!  
And You're Invited!  
**Good Shepherd Episcopal Church**  
Christmas Eve Service  
Wednesday, December 24, 5:00pm  
Keene Elementary School  
302 547-7849  
www.GoodShepherdDE.org  
Sponsored by the Diocese of Delaware

**The Way Ministries**  
(an extension of Highway Gospel Community Temple, West Chester PA)  
Highway Word of Faith Ministries is presently worshipping @ The George Wilson Community Center  
303 New London Rd., Newark, DE  
Sunday:  
8:00-9:00am Christian Education classes for all ages  
9:00am Sunday Morning Celebration  
Wednesday: Location  
7:00-8:00pm Bible Enrichment Class at Prayer Temple  
49 New London Rd.  
Newark, DE 19711  
Mailing Address: P.O. Box 220  
Bear, Delaware 19701-0220  
Visit us online @ www.theway.ws or send us a note at...theway238@aol.com  
Pastor Carl A. Turner Sr. & Lady Karen B. Turner  
For further information or directions please call:  
302-834-9003

Wisdom from many sources  
Sunday Service 10am  
Childcare and Sunday School  
**Unitarian Universalist Fellowship**  
420 Willa Road, Newark  
302.368.2984 uufn.org  
Come Join Us!  
Speaker: Rev. Greg Chute

**NEW LIFE CHRISTIAN FELLOWSHIP**  
Sunday Service 9:30 AM  
Multimedia Children's Ministry!  
Contemporary Worship!  
Relevant messages!  
Church Office: 999-1800  
Check out our web page:  
www.NewLifeDE.org  
2712 Old Milltown Rd.  
Wilmington, DE  
(near Kirkwood Hwy & Milltown Rd)

**St. Barnabas' Episcopal Church**  
Serving Hockessin, Pike & Mill Creek  
Worship Services:  
Saturday 5:30 pm  
Sunday 7:30, 9:00, 11:15 am  
302-994-6607  
www.stbarnabasde.org  
2800 Duncan Road, Wilmington, DE 19808

**Our Redeemer Lutheran Church**  
Adult Bible Class 8:45 am  
Divine Worship 10:00 am  
Children's Sun. School 10:00 am  
Pastor Jeremy Loesch  
www.ordelc.org LCMS  
10 Johnson Rd., Newark (near Rts. 4 & 273)  
302-737-6176

**SANCTUARY BAPTIST FELLOWSHIP CHURCH**  
"The Church Where God Meets Man"  
Pastor Anthony Lester  
60 Fir Avenue • Bear, DE  
(302) 832-8005  
Powerhouse Sunday School for all ages at 9:45a.m.  
Sunday Worship at 11:00 a.m.  
Wednesday & Friday Bible Study at 7:00 p.m.  
Morning Prayer Tuesday & Thursday at 6:00 a.m.  
Visit our web site: www.sanctuarybaptist.com  
(Located between Rt. 40 & School Bell Rd.)

**Newark Church of Christ**  
91 Salem Church Road  
(near Christiana High School)  
302-737-3781  
www.newarkchurch.com  
10:30AM Sunday Worship  
Steve Mahoney, Minister  
- Sometimes it's hard to imagine a better future when the news is so discouraging. In spite of his many hardships, the Apostle Paul dreamed big dreams. Join us Sunday as we consider what it takes to dream again

**TRINITY PRESBYTERIAN CHURCH (PCA)**  
SUNDAY WORSHIP 9:30 AM  
Meeting at: First Church of the Nazarene  
357 Papermill Road, Newark, DE  
For more information please call  
302-233-6995

**ST. MARY'S ANGLICAN CHURCH**  
"Offering An unchanging faith to all in a changing world"  
Traditional Holy Communion, Sundays 10am  
Children's Sunday School, Sun. 10am  
Evening Prayer, Tuesdays 7pm  
Morning Prayer, Thursdays 10am  
The Reverend Ken Gunn-Walberg.  
www.anglican catholic.org  
Corner, Washington St. & Lea Blvd  
Wilmington, DE (302) 764-9080  
Wheelchair Accessible

**GLORIOUS PRESENCE CHURCH**  
Sunday 8:30 a.m.  
Acoustic Worship  
Sunday 10:30 a.m.  
Electric Worship  
Saturday 5:00 p.m.  
Traditional Liturgy  
Pastoral Team  
Curtis E. Leins, Ph.D  
Robert F. McKnight  
Theodore Lambert, III  
James L. Ford  
Located 1 1/2 miles North of Elkton on Rt. 213  
(410) 392 3456

**First Presbyterian Church**  
292 W. Main Street • Newark, DE 19711  
302-731-5644 • www.firstpresnewark.org  
A Stephen Ministry Congregation  
• Worship with us:  
9:00 a.m. Contemporary Service with Praise Team  
10:30 a.m. Traditional Service with Chancel Choir & Organ  
Child Care Provided - Handicapped Accessible - Sign Interpreter  
• Learn with us: Classes Begin Sept. 7th  
9:00 a.m. Sunday School for Children and Youth  
9:00 a.m. Academy of Christian Studies - Exciting classes for Adults with guest speakers  
UPY Program - Sunday Nights  
• Hearts, Hands and Voices Music Program:  
Ring with your hands in our Adult Bell Choir  
Sing with your voice in our children's and adult choirs  
All from the heart!  
• A Mission Outreach Church  
Supporting Westminster House Recovering Community  
Local Area Outreach to the Newark Community  
Word Wide to Congo, India, Guatemala, Korea, Kazakhstan



## LEGAL NOTICE LEGAL NOTICE LEGAL NOTICE LEGAL NOTICE LEGAL NOTICE LEGAL NOTICE LEGAL NOTICE LEGAL NOTICE LEGAL NOTICE

**SHERIFF'S SALE**

The following Real Estate will be exposed for Public Sale at the CITY/COUNTY BLDG., 800 N. French Street, City of Wilmington, New Castle County, Delaware, by Michael P. Walsh, Sheriff, on **WEDNESDAY the 19th day of DECEMBER, 2008 at 10:00 a.m.** The legal limit of 152 persons in Council Chambers will be enforced.

**SHERIFF'S SALE**

By virtue of a writ of LEV FAC #15 OC, AD., 2008.  
PARCEL NO. 08-042.30-055  
PROPERTY ADDRESS: 24 White Clay Crescent Newark, Delaware

ALL that certain lot, piece or parcel of land with the buildings thereon erected, situate in Mill Creek Hundred, New Castle County and State of Delaware, known as 24 White Clay Crescent, being Lot No. 29 on the Recorded Plan for Village of Meeting House Hill in Pike Creek Valley as said Plan is of record in the Office of the Recorder of Deeds, in and for New Castle County, Delaware in Microfilm Record No. 913, and being more particularly bounded and described in accordance with a recent survey by Zebley & Associates, Inc., Professional Land Surveyors of Wilmington, Delaware, dated October 28, 2005, as follows, to-wit:

BEING the same lands and premises which John E. Tarburton and Connie S. Tarburton, husband and wife, by Deed dated November 15, 2005 and recorded in the Office of the Recorder of Deeds, in and for New Castle County and State of Delaware, in Instrument # 20051129-0122099, did grant and convey unto Chin C. Wei, in fee.

SEIZED AND TAKEN IN EXECUTION AS THE PROPERTY OF CHIN C. WEI.

TERMS OF SALE: 10% DOWN AT TIME OF SALE.  
BALANCE DUE ON OR BEFORE JANUARY 5, 2009.

OCTOBER 31, 2008

**SHERIFF'S SALE**

By virtue of a writ of LEV FAC #16 OC, AD., 2008.  
PARCEL NO. 09-038.30-409  
PROPERTY ADDRESS: 35 Glenwood Drive, Newark, DE

ALL that certain piece, parcel or tract of land with the buildings thereon erected situate in White Clay Creek Hundred, New Castle County and State of Delaware, being Lot No. 57, on the Record Major Subdivision Plan of Glenwood Station, as recorded in the Office of the Recorder of Deeds in and for New Castle County, on Instrument Number 20021022-0101565 and being more particularly bounded and described in accordance with a recent Mortgage Inspection Plan prepared by East Coast Survey, Professional Land Surveyors, dated April 21, 2006.

AND BEING the same lands and premises which Modupeola O. Famuyide by deed dated April 28, 2006 and recorded in the Office of the Recorder of Deeds in and for New Castle County, Delaware as Instrument No. 20060504-0043295 did grant and convey unto Michael G. Hammond, in fee.

SEIZED AND TAKEN IN EXECUTION AS THE PROPERTY OF MICHAEL G. HAMMOND.

TERMS OF SALE: 10% DOWN AT TIME OF SALE.  
BALANCE DUE ON OR BEFORE JANUARY 5, 2009.

OCTOBER 31, 2008

**SHERIFF'S SALE**

By virtue of a writ of LEV FAC #17 OC, AD., 2008.  
PARCEL NO. 08-045.30-139  
PROPERTY ADDRESS: 2212 Henlopen Avenue, Wilmington, Delaware 19804

ALL that certain lot, piece or parcel of land, with the buildings thereon erected, situate in Millcreek Hundred, New Castle County, Delaware, known as Lot No. 3, Block K, on the plot of Kiamensi Gardens, as said plot is recorded in the Office of the Recorder of Deeds, New Castle County, in Deed Record S. Volume 29, Page 600, and described in accordance with a survey prepared by East Coast Survey, Inc., dated August 24, 2005.

BEING the same lands and premises that Sherry Tabor by deed dated September 28, 2005 and recorded in the Office of the Recorder of Deeds in and for New Castle County, Delaware, in Deed book, 20051005-0101834, did grant and convey unto Michael Molitor, in fee.

SEIZED AND TAKEN IN EXECUTION AS THE PROPERTY OF MICHAEL MOLITOR.

TERMS OF SALE: 10% DOWN AT TIME OF SALE.  
BALANCE DUE ON OR BEFORE JANUARY 5, 2009.

OCTOBER 31, 2008

**SHERIFF'S SALE**

By virtue of a writ of ALIAS LEV FAC #20 OC, AD., 2008.  
TAX PARCEL NO. 11-021.10-101  
PROPERTY ADDRESS: 191 McCormick Boulevard, Newark, Delaware 19702

All that certain lot, piece or parcel of land with the improvements erected thereon situate in Pencader Hundred, New Castle County, Delaware being designated Lot 130 as shown on the Record Major Subdivision Plan of Woodland Village, or record in the Office of the Recorder of Deeds in and for New Castle County, Delaware in Microfilm No. 12641, said lot also known as 191 McCormick Boulevard and being more particularly bounded and de-

scribed in accordance with a recent mortgage inspection plan by A.E.S. Surveyor dated June 7, 1999, as follow to wit:

BEING the same lands conveyed to Darby D. Ford and Chris D. Ford by Deed from Darby D. Ford and Chris D. Lloyd, n/k/a Chris D. Ford, dated March 25, 2004, and recorded in the Office of the Recorder of Deeds in and for New Castle County in Instrument No. 20040527-0058258.

SEIZED AND TAKEN IN EXECUTION AS THE PROPERTY OF DARBY D. FORD AND CHRIS D. LLOYD.

TERMS OF SALE: 10% DOWN AT TIME OF SALE.  
BALANCE DUE ON OR BEFORE JANUARY 5, 2009.

OCTOBER 31, 2008

**SHERIFF'S SALE**

By virtue of a writ of FIRST PLURIES LEV FAC #27 OC, AD., 2008.

TAX PARCEL NO. 11-026.30-257  
PROPERTY ADDRESS: 24 Red Sunset Drive, Newark, DE 19702

ALL that certain land situate in New Castle County, Delaware: Being known as designated as Lot numbered twelve (112) as shown on the Record Major Subdivision Plan of Perch Creek 111, said plan being recorded in the Office of the Recorder of Deeds in and for New Castle County, State of Delaware in Microfilm N. 12819. The improvements thereon being known as 24 Red Sunset Drive, Newark, DE 19702. Being also one of the lots of ground which by Deed recorded among the Land Records of New Castle County, State of Delaware in Book 2237, Page 143 as granted and conveyed by Nicholas Development unto Pulte Home Corporation, the Grantor herein. Subject to all declarations, easements, rights-of-way, restrictions, declarations, agreements, covenants and plans of record.

TOGETHER with the buildings and improvements thereon erected, made or being; and all and every, the rights, alleys, ways, waters, privileges, appurtenances and advantages, to the same belonging, or in any wise appertaining.

BEING the same lands and premises which Pulte Home Corporation, by their Attorney-in-Fact, Stephen E. Anderson, by corrective deed dated February 18, 1998 and recorded in the Office of the Recorder of Deeds in and for New Castle County, State of Delaware in Deed Book 2407, Page 67, in fee.

SEIZED AND TAKEN IN EXECUTION AS THE PROPERTY OF DONALD W. AND ANGELA WILSON.

TERMS OF SALE: 10% DOWN AT TIME OF SALE.  
BALANCE DUE ON OR BEFORE DECEMBER 7, 2008.

OCTOBER 31, 2008

**SHERIFF'S SALE**

By virtue of a writ of LEV FAC #35 OC, AD., 2008.  
PARCEL NO. 11-026.30-207

PROPERTY ADDRESS: 3 West Hawthorne Court, Newark, DE

ALL that certain lot, piece or parcel of land with the buildings thereon erected, situate in Pencader Hundred, New Castle County and State of Delaware, known as 3 West Hawthorne Court, being Lot No. 6 on the Record major Subdivision Plan for Perch Creek II, as said plan is of record in the Office of the Recording of Deeds in and for New Castle County, Delaware, in Microfilm Record No. 11,809 and being more particularly bounded and described in accordance with a recent survey by Zebley and Associates, Inc., dated April 20, 1995.

AND BEING the same lands and premises which Jennifer L. Chamberlain by deed dated November 30, 2007 and recorded in the Office of the Recorder of Deeds in and for New Castle County, Delaware as Instrument No. 20071207-0104353 did grant and convey unto Jacquelyn L. Herbert.

SEIZED AND TAKEN IN EXECUTION AS THE PROPERTY OF JENNIFER L. CHAMBERLAIN AND JACQUELYN L. HERBERT.

TERMS OF SALE: 10% DOWN AT TIME OF SALE.  
BALANCE DUE ON OR BEFORE JANUARY 5, 2009.

OCTOBER 31, 2008

**SHERIFF'S SALE**

By virtue of a writ of LEV FAC #37 OC, AD., 2008.  
PARCEL NO. 09-017.10-232

PROPERTY ADDRESS: 516 Tamara Circle, Newark, DE  
ALL that certain lot, piece or parcel of land with the dwelling thereon erected, situate in White Clay Hundred, New Castle County and State of Delaware, and known as 516 Tamara Circle and Lot No. 28, block M, on the Plan of Harmony Hills, Section III, as said Plan is of record in the Office for the Recording of Deeds in and for New Castle County, Delaware in Plat Record 4, Page 70, and being more particularly bounded and described in accordance with a survey by A.E.S. Surveyors, dated January 11, 2007.

AND BEING the same lands and premises which Richard L. Burton and Catherine E. Burton by deed dated January 29, 2007 and recorded in the Office of the Recorder of Deeds in and for New Castle County, Delaware as Instrument No. 20070130-0010121 did grant and convey unto Kenneth Dryden.

SEIZED AND TAKEN IN EXECUTION AS THE PROPERTY OF KENNETH DRYDEN.

TERMS OF SALE: 10% DOWN AT TIME OF SALE.  
BALANCE DUE ON OR BEFORE JANUARY 5, 2009.

OCTOBER 31, 2008

**SHERIFF'S SALE**

By virtue of a writ of LEV FAC #46 OC, AD., 2008.  
PARCEL NO. 11-013.40-081  
PROPERTY ADDRESS: 2 Lynam Lookout Drive, Newark, DE 19702

All that certain lot, piece or parcel of land with the building thereon erected, situate in Pencader Hundred, New Castle County, and State of Delaware, known as 2 Lynam Lookout Drive, and being Lot No. 2, as shown on the Plan of The Preserve at Lafayette Hill, as said Plan is of record in the Office of the Recorder of Deeds in and for New Castle County, Delaware in Microfilm No. 11738, and being more particularly bounded and described in accordance with a survey prepared by A.E.S. Surveyors, dated August 15, 2005, as follows, to-wit:

BEING the same lands and premises which Craig W. Colby and Krista D. Romanczak n/k/a Krista D. Colby did grant and convey unto Rechar H. Shorter and Michelle E. Shorter by deed dated August 25, 2005 and recorded on September 6, 2005 in the Office of the Recorder of Deeds, in and for New Castle County, State of Delaware, in Deed Instrument 20050906-0089838.

SEIZED AND TAKEN IN EXECUTION AS THE PROPERTY OF RECHAR H. SHORTER AND MICHELLE E. SHORTER.

TERMS OF SALE: 10% DOWN AT TIME OF SALE.  
BALANCE DUE ON OR BEFORE JANUARY 5, 2009.

OCTOBER 31, 2008

**SHERIFF'S SALE**

By virtue of a writ of LEV FAC #47 OC, AD., 2008.  
PARCEL NO. 08-026.30-185  
PROPERTY ADDRESS: 321 Mitchell Drive, Wilmington, DE 19808

ALL that certain lot, piece or parcel of land with the building thereon erected, known as 321 Mitchell Drive, situate in Mill Creek Hundred, New Castle County and State of Delaware, being Lot No. 23, as shown on the Record Major Subdivision Plan of Mitchell Estates, of record in the Office of the Recorder of Deeds in and for New Castle County, Delaware, on Microfilm No. 4486, and being more particularly bounded and described in accordance with a survey made by A.E.S. Surveyors, dated February 09, 2006, as follows, to-wit:

BEING the same lands and premises which Frances a. Vaughn did grant and convey unto Christine M. Menser and Patrick E. Menser by deed dated February 28, 2006 and recorded on March 2, 2006 in the Office of the Recorder of Deeds, in and for New Castle County, State of Delaware, in Deed Instrument 20060302-0020802.

SEIZED AND TAKEN IN EXECUTION AS THE PROPERTY OF CHRISTINE M. MENSER AND PATRICK E. MENSER.

TERMS OF SALE: 10% DOWN AT TIME OF SALE.  
BALANCE DUE ON OR BEFORE JANUARY 5, 2009.

OCTOBER 31, 2008

**SHERIFF'S SALE**

By virtue of a writ of ALIAS LEV FAC #48 OC, AD., 2008.  
PARCEL NO. 11-017.00-048-c0244  
PROPERTY ADDRESS: 2609 Waters Edge Drive Newark, DE 19702

ALL that certain unit of real property, existing under and by virtue of the Unit Property Act of the State of Delaware, known as Unit No. 2609 in the Waters Edge Condominiums, an apartment condominium, situate in the County of New Castle, State of Delaware, such Unit being more particularly bounded and described in (1) the Enabling Declaration Establishing a Plan for Condominium Ownership of Waters Edge Condominiums, dated December 3, 1990 and recorded in the Office of the Recorder of Deeds in and for New Castle County, Delaware, in Deed book 1116, Page 282, as amended by that certain First Amendment dated March 28, 1991 and recorded in Deed Book 1158, Page 37 and Second Amendment dated June 20, 1991 and recorded in Deed Book 1191, Page 136 and third Amendment dated November 30, 1992 of record in Deed Book 1445, Page 49 and Fourth Amendment dated August 25, 1993 and of record in Deed Book 1584, Page 58; Fifth Amendment dated October 14, 1997 and of record in Deed Book 2343, Page 319; Sixth Amendment dated September 22, 2000 and of record in Deed book 2714, page 162 and (2) the Declaration Plan of Waters Edge Condominiums, prepared by Kidde Consultants, Inc., Engineers and Edward C. Derby AIA-Architects, Inc., and recorded in the Office aforesaid at Microfilm, No. 10681, such Plan being amended, in part, by that certain Plan Amendment recorded in the Office of the Recorder of Deeds as aforesaid in Microfilm No. 10835; 10910, 11503 and 11783.

TOGETHER WITH a proportionate undivided interest in the Common Elements of Waters Edge Condominiums, as the same are more particularly bounded and described in the aforesaid Enabling Declaration and Declaration Plan,

(Continued)



## LEGAL NOTICE LEGAL NOTICE LEGAL NOTICE LEGAL NOTICE LEGAL NOTICE LEGAL NOTICE LEGAL NOTICE LEGAL NOTICE LEGAL NOTICE

(Continued)

such proportionate interests expressed in terms of a percentage of the Common Elements as a whole being .003800 percent.

BEING the same lands and premises which Lian Sun did grant and convey unto Robert Love by deed dated October 27, 2005 and recorded on October 31, 2005 in the Office of the Recorder of Deeds, in and for New Castle County, State of Delaware, in Deed Instrument 20051031-0110962.

SEIZED AND TAKEN IN EXECUTION AS THE PROPERTY OF ROBERT LOVE.

TERMS OF SALE: 10% DOWN AT TIME OF SALE. BALANCE DUE ON OR BEFORE JANUARY 5, 2009.

OCTOBER 31, 2008

**SHERIFF'S SALE**

By virtue of a writ of LEV FAC #49 OC, AD., 2008.

PARCEL NO. 18-002.00-025

PROPERTY ADDRESS: 4 Hearn Place, Newark, DE 19711

ALL that certain lot, piece or parcel of land with the buildings thereon erected, situate in the City of Newark, New Castle County and State of Delaware, known as 4 Hearn Place, being Lot No. 491, as shown on the Plan of Fairfield, section 4, as said plan is of Record in the Office of the Recorder of Deeds in and for New Castle County, Delaware, in Microfilm Record No. 1409 and being more particularly bounded and described in accordance with a recent survey by Zebley and Associates, Inc., Professional Land Surveyors of Wilmington, Delaware, dated October 11, 2005, as follows, to-wit:

BEING the same lands and premises which Norman C. Barnes did grant and convey unto Norman C. Barnes and Margaret N. Toscano by deed dated November 1, 2005 and recorded on December 16, 2005 in the Office of the Recorder of Deeds, in and for New Castle County, State of Delaware, in deed Instrument 20051216-0129892.

SEIZED AND TAKEN IN EXECUTION AS THE PROPERTY OF NORMAN C. BARNES AND MARGARET N. TOSCANO.

TERMS OF SALE: 10% DOWN AT TIME OF SALE. BALANCE DUE ON OR BEFORE JANUARY 5, 2009.

OCTOBER 31, 2008

**SHERIFF'S SALE**

By virtue of a writ of LEV FAC #51 OC, AD., 2008.

PARCEL NO. 10-043.10-830

PROPERTY ADDRESS: 6 Sir Thomas Lane, Newark, Delaware 19702

ALL that lot of ground situate in New Castle County, Delaware, and described as follows, that is to say:

BEING known and designated as Lot Numbered Thirty Six (36), situate in New Castle County and State of Delaware, as shown on the Recorded Major Subdivision Plan of Wallington Meadows and prepared by Landmark Engineering, Inc., dated August 26, 1994 as recorded in the Office of the Recorder of Deeds in and for New Castle County, State of Delaware in Microfilm Number 12225. The improvements thereon being known as 6 Sir Thomas Lane, Newark, Delaware 19702.

BEING also one of the lots of ground which by Deed dated July 17, 1996 and recorded in New Castle County, State of Delaware is Book Numbered 2150, page 100, was granted and conveyed by Pulte Home Corporation, by their Attorney-in-Fact, Paul S. Kotsheer to Jimmy L. Ruff and Deborah M. Ruff.

SEIZED AND TAKEN IN EXECUTION AS THE PROPERTY OF JIMMY L. RUFF AND DEBORAH M. RUFF.

TERMS OF SALE: 10% DOWN AT TIME OF SALE. BALANCE DUE ON OR BEFORE JANUARY 5, 2009.

OCTOBER 31, 2008

**SHERIFF'S SALE**

By virtue of a writ of LEV FAC #52 OC, AD., 2008.

TAX PARCEL NO. 10-033.30-054

PROPERTY ADDRESS: 13 Ross Court, Newark, Delaware 19702

ALL that certain lot, piece or parcel of land, with the building thereon erected, situate in New Castle Hundred, New Castle County and State of Delaware, known as 13 Ross Court, being Lot No. 34 on the record resubdivision plan Centennial Village, Section B, as said plan is of record in the Office of the Recording of Deeds in and for New Castle County and State of Delaware, in Microfilm Record No. 6557 and being more particularly bounded and described in accordance with a survey prepared by East Coast Survey dated October, 2005, as follows, to-wit:

BEING the same lands and premises which previous grantor Donna Schoeribeck, Esq. Trustee for the Mackley Family Trust dated June 30, 2004 by deed dated February 10, 2005 and recorded in the Office of the Recorder of Deeds, in and for New Castle County and State of Delaware, in deed Instrument #1 200502140015310, did grant and convey unto Gerald K. Maxwell in fee.

AND BEING the same lands and premises which Gerald K. Maxwell by Deed dated October 31, 2005 and recorded in the Office of the Recorder of Deeds in and for New Castle County, Delaware, in deed Instrument Number 20051104-0113350 did grant and convey unto Eric W. Porter.

SEIZED AND TAKEN IN EXECUTION AS THE PROPERTY OF ERIC W. PORTER.

TERMS OF SALE: 10% DOWN AT TIME OF SALE. BALANCE DUE ON OR BEFORE JANUARY 5, 2009.

OCTOBER 31, 2008

**SHERIFF'S SALE**

By virtue of a writ of ALIAS LEV FAC #66 OC, AD., 2008.

PARCEL NO. 11-009.20-009

PROPERTY ADDRESS: 13 Kitty Lane, Newark, DE 19713

ALL that certain lot, piece or parcel of land with the buildings thereon erected, situate in Pencader Hundred, New Castle County and State of Delaware, known as 13 Kitty Lane, being Lot No. 11, on the Plan of Cataline Gardens, as the Plan thereof is of Record in the Office of the Recorder of Deeds, in and for New Castle County in Plat Record 4, Page 73, and being more particularly bounded and described in accordance with a survey prepared by A.E.S. Surveyors, Professional Land Surveyors, dated June 7, 2002, as follows, to-wit:

BEING the same lands and premises which Franklin D. Sheets and Douglas A. Sheets did grant and convey unto Douglas A. Sheets and Belinda J. Sheets by deed dated May 24, 2004 and recorded on June 4, 2004 in the Office of the Recorder of Deeds, in and for New Castle County, State of Delaware, in Deed Instrument 20040604-0060920.

SEIZED AND TAKEN IN EXECUTION AS THE PROPERTY OF DOUGLAS A. SHEETS AND BELINDA J. SHEETS.

TERMS OF SALE: 10% DOWN AT TIME OF SALE. BALANCE DUE ON OR BEFORE JANUARY 5, 2009.

OCTOBER 31, 2008

**SHERIFF'S SALE**

By virtue of a writ of LEV FAC #69 OC, AD., 2008.

PARCEL NO. 09-013.10-028

PROPERTY ADDRESS: 1014 Nottingham Road, Newark, DE 19711

ALL that certain lot, piece or parcel of land situated in White Clay Creek Hundred, New Castle County and State of Delaware, and being Lot No. 15, Tip Top Farms (f/k/a the plot plan of John P. and Virginia M. Diehl dated June 30, 1952), on the northeasterly side of Nottingham Road, (at 60 feet wide), and more particularly bounded and described according to a Mortgagees Inspection Plan prepared by Raymond F. Christian & Associates, Inc., dated November 10, 1995, as follows, to-wit:

BEING the same lands and premises which E. David Bailey and Kelly A. Bailey, husband and wife, by Deed dated June 16, 2003, and recorded in the Office of the Recorder of Deeds, in and for New Castle County, Delaware, at Instrument No. 20030619-0074074, did grant and convey unto Betty J. Fox, as sole owner.

SEIZED AND TAKEN IN EXECUTION AS THE PROPERTY OF BETTY J. FOX.

TERMS OF SALE: 10% DOWN AT TIME OF SALE. BALANCE DUE ON OR BEFORE JANUARY 5, 2009.

OCTOBER 31, 2008

**SHERIFF'S SALE**

By virtue of a writ of ALIAS LEV FAC #71 OC, AD., 2008.

PARCEL NO. 09-028.10-086

PROPERTY ADDRESS: 135 Brennan Drive, Newark, DE

ALL that certain piece or parcel of land with the dwelling thereon erected, situate in White Clay Creek Hundred, New Castle County and State of Delaware and known as Lot No. 2, Block B on the Plan of Todd Estates Section 1, as said plan is of record in the Office of the Recorder of Deeds, New Castle County, Delaware, in Plat Book 4 Page 35, and being more particularly bounded and described in accordance with a survey by A.E.S. Surveyors, dated November 5, 1998.

BEING the same lands and premises which Marshall K. Welden Jr. and Jennifer L. Welden did by deed dated August 2004 and recorded in Instrument 20040831-00968867 did grant and convey unto Marshall K. Welden Jr. and Jennifer L. Welden.

SEIZED AND TAKEN IN EXECUTION AS THE PROPERTY OF MARSHALL K. WELDEN JR. AND JENNIFER L. WELDEN.

TERMS OF SALE: 10% DOWN AT TIME OF SALE. BALANCE DUE ON OR BEFORE JANUARY 5, 2009.

OCTOBER 31, 2008

**SHERIFF'S SALE**

By virtue of a writ of LEV FAC #73 OC, AD., 2008.

PARCEL NO. 10-032.20-047

PROPERTY ADDRESS: 11 Verdi Circle, Newark, DE 19702

ALL that certain lot, piece or parcel of land, with the dwelling thereon erected, situate in New Castle Hundred, New Castle County and State of Delaware, known as 11 Verdi Circle and being Lot No. 381, Christiana Falls, as shown on the Record Re-subdivision Plan of Taylortowne, as said Plan is of record in the Office of Recorder of Deeds in and for New Castle County, Delaware, in Microfilm No. 6398, and being more particularly bounded and described in accordance with a recent survey by Merestone Consultants, Inc., dated April 8, 2004, as follows, to-wit:

AND BEING the same lands and premises conveyed unto Roberta Crumley, by deed of Empire LLC., dated April 29, 2004 and of record in the Office of the Recorder of Deeds in and for New Castle County and State of Delaware in deed Instrument No. 20040503-0048860.

SEIZED AND TAKEN IN EXECUTION AS THE PROPERTY OF ROBERTA CRUMLEY.

TERMS OF SALE: 10% DOWN AT TIME OF SALE. BALANCE DUE ON OR BEFORE JANUARY 5, 2009.

OCTOBER 31, 2008

**SHERIFF'S SALE**

By virtue of a writ of LEV FAC #76 OC, AD., 2008.

PARCEL NO. 10-032.20-240

PROPERTY ADDRESS: 9 Mozart Way, Newark, DE

ALL that certain lot piece or parcel of land with the buildings thereon erected, known as 9 Mozart Way, situate in New Castle Hundred New Castle County and State of Delaware being Lot No. 325 on the record Major Land Development Plan of Taylor Towne as said plan is of record in the Office of the Recorder of Deeds, New Castle County Delaware in Microfilm No. 4188 and being more particularly bounded and described in accordance with a recent survey by East Coast Survey, dated May 12, 2004, as follows, to-wit:

BEING the same lands and premises which Eugene C. Plummer did by deed dated May 27, 2004 and recorded in the office of the Recorder of Deeds, New Castle County, Delaware, in Instrument No. 20040528-0059120 did grant and convey unto Pamela L. Miller.

SEIZED AND TAKEN IN EXECUTION AS THE PROPERTY OF PAMALA L. MILLER.

TERMS OF SALE: 10% DOWN AT TIME OF SALE. BALANCE DUE ON OR BEFORE JANUARY 5, 2009.

OCTOBER 31, 2008

**SHERIFF'S SALE**

By virtue of a writ of ALIAS LEV FAC #79 OC, AD., 2008.

PARCEL NO. 09-040.20-292

PROPERTY ADDRESS: 47 Sherin Drive, Newark, DE

ALL that certain lot, piece or parcel of land with all improvements thereon erected, situate in White Clay Creek Hundred, New Castle County and State of Delaware, known as Lot 578 on the plan of Salem Woods, Phase III, as recorded in, Microfilm No. 10150, Further known as 47 Sherin Drive, and as shown on a Mortgagees inspection plan prepared by Raymond F. Christian & Associates, Inc., Lands Surveyors, dated July 6, 1994 and being more particularly bounded and described in accordance with a survey prepared by Pelsa Company, dated September 8, 2006, as follows, to-wit:

BEGINNING at a point, on the Southwesterly side of Sherin Drive 50 feet wide at a corner or Lot No. 578 said point being located the following 2 courses and distances from the Northerly end of a junction curve R=25.00 feet joining the Northwesterly side of Warren Drive 50 feet wide with the aforesaid side of Sherin Drive 50 feet wide 1) with a curve to the left R= 116.82 feet an arc distance of 99.98 feet to a point and 2) North 65 degrees 2 minutes 57 seconds West 283.92 feet to the point of beginning thence from the point of beginning and along the line of Lot 578 South 24 degrees 38 minutes 3 seconds West 115.00 feet to a point on the line of Lot 584 thence by the same and in part along the line of lot 158 and 585 North 65 degrees 26 minutes 57 seconds West 73.50 feet to a point a corner of lot 576 thence by the same North 24 degrees 33 minutes 3 seconds East 123.13 feet to a point on the Southwesterly side of Sherin Court thence by the same the following 2 courses and distances 1) with a curve to the left R=80.00 feet an arc distance of 54.32 feet to the point and place 2) South 65 degrees 26 minutes 57 seconds East 20.00 feet to the point and place of beginning

AND BEING the same lands and premises conveyed unto Andrew Curry, by deed of Robert S. Aellis and Marliese Aellis dated January 10, 2007 and of record in the Office of the Recorder of Deeds in and for New Castle County and State of Delaware in deed Instrument No. 20070110-0002896.

SEIZED AND TAKEN IN EXECUTION AS THE PROPERTY OF ANDREW CURRY.

TERMS OF SALE: 10% DOWN AT TIME OF SALE. BALANCE DUE ON OR BEFORE JANUARY 5, 2009.

OCTOBER 31, 2008

**SHERIFF'S SALE**

By virtue of a writ of LEV FAC #87 OC, AD., 2008.

PARCEL NO. 09-029.10-367

PROPERTY ADDRESS: 20 Spinet Road, Newark, Delaware 19713

ALL that certain lot, piece or parcel of land, situated in White Clay Creek Hundred, New Castle County and State of Delaware, being known as Lot No. 28, Block D, Section 2, on a certain plat known as Section 2, Sherwood Forest, also known as 20 Spinet Road, prepared by Edward H. Richardson & Associates, Inc., Civil Engineers and Surveyors, dated December 14, 1972, of record in the Office of the Recorder of Deeds, in and for New Castle County, State of Delaware, in Microfilm No. 1900, and being more particularly bounded and described in accordance with a mortgage inspection plan, prepared by East Coast Surveyors, of Wilmington, Delaware, dated March 22, 2000, as follows, to-wit:

BEING the same lands and premises which Jeffrey Hobbs Carey and Elissa C. Carey, by Deed dated April 21, 2006 and recorded in the Office of the Recorder of Deeds, in and for New Castle County and State of Delaware, in Instrument #20060515-0046576, did grant and convey unto Jeffrey Hobbs Carey.

SEIZED AND TAKEN IN EXECUTION AS THE PROPERTY OF JEFFREY HOBBS CAREY.

TERMS OF SALE: 10% DOWN AT TIME OF SALE. BALANCE DUE ON OR BEFORE JANUARY 5, 2009.

OCTOBER 31, 2008

**SHERIFF'S SALE**

By virtue of a writ of SECOND PLURIES LEV FAC #94 OC, AD., 2008.

PARCEL NO. 11-017.40-138

PROPERTY ADDRESS: 29 Sunny Bend, Newark, Delaware 19702

ALL THAT certain lot, piece or parcel of land with the buildings thereon, situate in Pencader Hundred, New Castle County, Delaware, being designated Lot 305, Block L, as (Continued)



## LEGAL NOTICE LEGAL NOTICE LEGAL NOTICE LEGAL NOTICE LEGAL NOTICE LEGAL NOTICE LEGAL NOTICE LEGAL NOTICE LEGAL NOTICE

(Continued)

shown on the Record Subdivision Plan of Strawberry Run, in Four Seasons, of record in the Office of the Recorder of Deeds, New Castle County, Delaware, on Microfilm No. 3081, said lot also known as 29 Sunny Bend Drive and being described according to a survey by First State Mortgage Surveys, Inc., dated July 10, 1985.

BEING the same lands and premises that Robert D. Allen and Maryellen Allen, by Deed dated May 13, 1996 and recorded in the Office of the Recorder of Deeds, in and for New Castle County, State of Delaware, in Deed Book 2111, Page 88, did grant and convey unto Maryellen Allen, in fee.

SEIZED AND TAKEN IN EXECUTION AS THE PROPERTY OF MARYELLEN ALLEN.

TERMS OF SALE: 10% DOWN AT TIME OF SALE. BALANCE DUE ON OR BEFORE JANUARY 5, 2009.

OCTOBER 31, 2008

**SHERIFF'S SALE**

By virtue of a writ of ALIAS LEV FAC #95 OC, AD., 2008. PARCEL ID: 11-006.20-385

PROPERTY ADDRESS: 114 Eastfield Road, Newark, DE 19713

ALL that certain lot, piece or parcel of land, with the buildings thereon erected, situate in Pencader Hundred, New Castle County, Delaware, being designated as Lot 561, Block T, on the Plan of Scottfield, Section Four, as said plan appears of record in the Office of the Recorder of Deeds in and for New Castle County, Delaware, on Microfilm No. 1540, said lot also known as 114 Eastfield Road, and described in accordance with a survey by Edward H. Richardson Associates, Inc., dated December 2, 1970.

BEING the same lands and premises which Calvin L. Mathis and Bessie D. Mathis, formerly husband and wife, by Deed dated October 21, 2002 and recorded in the Office aforesaid in Deed Instrument 2002 1029-0104325, did grant and convey unto Bessie D. Mathis, in fee.

SEIZED AND TAKEN IN EXECUTION AS THE PROPERTY OF BESSIE D. MATHIS.

TERMS OF SALE: 10% DOWN AT TIME OF SALE. BALANCE DUE ON OR BEFORE JANUARY 5, 2009.

OCTOBER 31, 2008

**SHERIFF'S SALE**

By virtue of a writ of LEV FAC #96 OC, AD., 2008.

PARCEL NO. 09-037.40-171

PROPERTY ADDRESS: 206 Tinsley Court, Newark, Delaware 19702

ALL that certain lot, piece or parcel of land with dwelling thereon erected situate in White Clay Creek Hundred, New Castle County, known as 206 Tinsley Court, Lot No. 23 as shown on the Plan of Salem Woods as said Plan is recorded in the Office of the Recorder of Deeds in and for New Castle County, Delaware in Microfilm No. 7018.

BEING the same lands and premises that Brandon Jones and Donna Baur-Jones by deed dated February 29, 2006 and recorded in the Office of the Recorder of Deeds in and for New Castle County, Delaware, in Deed Instrument 20060314-00025212, did grant and convey unto Donna Baur-Jones, in fee.

SEIZED AND TAKEN IN EXECUTION AS THE PROPERTY OF BRANDON JONES AND DONNA BAUR-JONES.

TERMS OF SALE: 10% DOWN AT TIME OF SALE. BALANCE DUE ON OR BEFORE JANUARY 5, 2009.

OCTOBER 31, 2008

**SHERIFF'S SALE**

By virtue of a writ of LEV FAC #99 OC, AD., 2008.

PARCEL NO. 09-021.40-218

PROPERTY ADDRESS: 10 Westerly Street, Newark, Delaware 19713.

ALL that certain piece, parcel or lot of land with the dwelling thereon erected, situate in White Clay Creek Hundred, New Castle County, Delaware, being known as 10 Westerly Street, Being Lot No. 192, Block A, as shown on the record major subdivision plan, Section 2-A, Kimberton, as said plan is of record in the Office of the Recorder of Deeds in and for New Castle County, Delaware, in Microfilm No. 2891, recorded on April 9, 1975, and described in accordance with a survey and legal description by David G. Williams, Professional Land Surveyors, dated March 15, 1988.

BEING the same lands and premises that Stephen R. Davis, by deed dated November 6, 2006 and recorded in the Office of the Recorder of Deeds in and for New Castle County, Delaware, in Deed Instrument 20070508-0041472, did grant and convey unto Stephen R. Davis and June Davis, in fee.

SEIZED AND TAKEN IN EXECUTION AS THE PROPERTY OF STEPHEN R. DAVIS AND JUNE DAVIS.

TERMS OF SALE: 10% DOWN AT TIME OF SALE. BALANCE DUE ON OR BEFORE JANUARY 5, 2009.

OCTOBER 31, 2008

**SHERIFF'S SALE**

By virtue of a writ of FIRST PLURIES LEV FAC #107 OC, AD., 2008.

PARCEL NO. 11-017.20-144

PROPERTY ADDRESS: 213 Edgewater Way, Newark, Delaware

ALL that certain piece, parcel or lot of land with the dwelling thereon erected, situate in Pencader Hundred, New Castle County and State of Delaware, being known as Lot 236, Block H as shown on the Resubdivision Plan of Four Seasons prepared by Edward M. Richardson Associates, dated April 16, 1971 and revised on October 30, 1972 and recorded in

the Office of the Recorder of Deeds in and for New Castle County, Delaware in Microfilm No. 2200 and more particularly bounded and described according to a survey by Zebley & Associates, dated October 10, 1988, to-wit.

AND BEING the same lands and premises which Lillian J. Burnett and Thomas H. Burnett by deed dated October 24, 1988 and recorded in the office aforesaid in Deed Record 778, Page 216, granted and conveyed to Dante A. Giardina and Angen M. Giardina, herein in fee.

SEIZED AND TAKEN IN EXECUTION AS THE PROPERTY OF DANTE A. GIARDINA AND ANGEN M. GIARDINA.

TERMS OF SALE: 10% DOWN AT TIME OF SALE. BALANCE DUE ON OR BEFORE JANUARY 5, 2009.

OCTOBER 31, 2008

**SHERIFF'S SALE**

By virtue of a writ of LEV FAC #113 OC, AD., 2008.

PARCEL NO. 09-029.10-224

PROPERTY ADDRESS: 307 S. Gerald Drive, Newark, Delaware 19713

ALL that certain lot, piece or parcel or lot of land with the buildings thereon erected, situate in White Clay Creek Hundred, New Castle County and State of Delaware, and known as Lot No. 71, Block D, on the Plan of Birchwood Park, Section 1, as said Plan is of record in the Office of the Recorder of Deeds, in and for New Castle County, Delaware, in Microfilm Record 694, and more particularly bounded and described in accordance with a survey by Howard L. Robertson, Inc., Professional Engineers and Land Surveyors of Wilmington, Delaware dated September 8, 2003, as follows, to wit:

BEING the same lands and premises which Viscount P Sherwood-Saul did by deed dated September 15, 2003 and recorded in the office aforesaid in Instrument No. 20030916-0118746 did grant and convey unto Jeffrey D. Edwards.

SEIZED AND TAKEN IN EXECUTION AS THE PROPERTY OF JEFFREY D. EDWARDS.

TERMS OF SALE: 10% DOWN AT TIME OF SALE. BALANCE DUE ON OR BEFORE JANUARY 5, 2009.

OCTOBER 31, 2008

**SHERIFF'S SALE**

By virtue of a writ of ALIAS LEV FAC #126 OC, AD., 2008.

PARCEL NO. 08-024.40-064

PROPERTY ADDRESS: 48 Quail Hollow Drive, Hockessin, Delaware 19707

ALL that certain lot, piece or parcel or lot of land, situate in Mill Creek Hundred, New Castle County, and State of Delaware, being Lot 64, Block B, as shown on Record Resubdivision on Plan of Mendenhall Village prepared by Karins and Associates, Inc., Professional Engineers and Land Surveyors, dated November 2, 1978.

BEING the same lands and premises which William B. McCready and Sharon B. McCready by Deed dated May 27, 1988, and recorded in the Office of the Recorder of Deeds in and for New Castle County, in Deed Book 708, Page 299, did grant and convey unto Kaki Rick Ling and Arlene M. Nikaido-Lung, in fee.

BEING the same land and premises that Kaki Rick Ling and Arlene M. Nikaido-Lung by deed dated December 30, 2004 and recorded in the Office of the Recorder of Deeds in and for New Castle County, State of Delaware, in Instrument Number 20050104-0000647, did grant and convey unto Kristina L. Boyd, in fee.

SEIZED AND TAKEN IN EXECUTION AS THE PROPERTY OF KRISTINA L. BOYD.

TERMS OF SALE: 10% DOWN AT TIME OF SALE. BALANCE DUE ON OR BEFORE JANUARY 5, 2009.

OCTOBER 31, 2008

**SHERIFF'S SALE**

By virtue of a writ of LEV FAC #133 OC, AD., 2008.

PARCEL NO. 08-037.10-047

PROPERTY ADDRESS: Four Gregg Court Wilmington, Delaware, 19808

ALL that certain lot, piece or parcel of land with the dwelling thereon erected, situate in Mill Creek Hundred, New Castle County, State of Delaware, being Lot No. 255, as shown on the Record Major Subdivision Plan of Wood Creek, Section Three, prepared by Edward H. Richardson Associates, Inc., and being more particularly bounded and described according to a recent survey by Franco R. Bellafante, Inc., Professional Land Surveyor, dated July 24, 1987.

SUBJECT to the Declaration of Restrictions dated May 7, 1979, between Village of Greenwood, Inc. and New Castle Council, and recording in the Office of the Recorder of Deeds in and for New Castle County, State of Delaware, in Deed Record T, Volume 105, Page 192.

SUBJECT ALSO to the Declaration of Restrictions dated November 7, 1979, by Village of Greenwood, Inc. and recorded in the Office of the Recorder of Deeds in and for New Castle County, State of Delaware, in Deed Record B, Volume 108, Page 100.

SUBJECT FURTHER to the Declaration of Restrictions dated January 9, 1987, by Glasgow Pines Construction Company, a Delaware corporation, and recorded in the Office of the Recorder of Deeds, in and for New Castle County, State of Delaware, in Deed Book 492, page 233

TOGETHER with the covenant of the party of the first party to pay when invoiced any "roll back" taxes which may

be assessed against the lands herein conveyed.

BEING the same lands and premises conveyed to Henry C. Warren and Mary Ann E. Warren, by Deed from Glasgow Pines Construction Company, dated August 31, 1987, and recorded September 14, 1987, in the Office of the Recorder of Deeds, in and for New Castle County and State of Delaware, in Deed Book 595, Page 174.

SEIZED AND TAKEN IN EXECUTION AS THE PROPERTY OF HENRY C. WARREN AND MARY ANN E. WARREN.

TERMS OF SALE: 10% DOWN AT TIME OF SALE. BALANCE DUE ON OR BEFORE JANUARY 5, 2009.

OCTOBER 31, 2008

**SHERIFF'S SALE**

By virtue of a writ of ALIAS LEV FAC #137 OC, AD., 2008.

TAX PARCEL NO. 11-036-053

PROPERTY ADDRESS: 18 Berkley Avenue, Newark, Delaware 19702

ALL that certain piece, parcel or lot of land, with the building thereon erected, situate in Pencader Hundred, New Castle County and State of Delaware, known as 18 Berkley Drive, and being Lot No. 151, as shown on the Plan of Farmington, as said Plan is of record in the Office of the Recorder of Deeds in and for New Castle County, Delaware, and being more particularly bounded and described in accordance with a survey prepared by A.E.S. Surveyors, dated July \_\_, 2005.

BEING the same lands and premises which Rechar H. Shorter and Michelle E. Shorter by Deed dated February 1, 2006, and of record in the Office of the Recorder of Deeds, in and for New Castle County and State of Delaware, in Instrument No. 20060202-0012081, did grant and convey unto Rechar H. Short, in fee.

SEIZED AND TAKEN IN EXECUTION AS THE PROPERTY OF RECHARD H. SHORTER AND MICHELLE E. SHORTER.

TERMS OF SALE: 10% DOWN AT TIME OF SALE. BALANCE DUE ON OR BEFORE JANUARY 5, 2009.

OCTOBER 31, 2008

**SHERIFF'S SALE**

By virtue of a writ of LEV FAC #140 OC, AD., 2008.

TAX PARCEL NO. 110143000c-503A

PROPERTY ADDRESS: 503 Cobble Creek Curve, Newark, Delaware 19702

ALL that certain unit of real property existing under and by virtue of the Unit Property Act of Delaware, known as Unit o. 503-A, Stone Throw, a condominium situate in Pencader Hundred, New Castle County, Delaware, as said unit is more particularly bounded and described in (1) Declaration of F.A.A.M. Inc., dated April 16, 1975, and recorded in the Office for the Recording of Deeds in and for New Castle County, Delaware, in Deed Record I, Volume 90, Page 564, and (2) the Declaration Plan of Stones Throw prepared by Edward H. Richardson Associates, Inc., Consulting Engineers, dated March 20, 1975, and recorded in the Office for the Recording of Deeds aforesaid in Microfilm No. 2904.

BEING the same lands and premises which Carl Chen and Pauline Chen, Martin J. Severin and Marie C. Severin, by Deed dated May 6, 1988, and recorded in the Office of the Recorder of Deeds in and for New Castle County, Delaware, in Deed Book 699, Page 48, did grant and convey unto Boo Hoe Kwa and Kuo Fan Tze, in fee.

BEING the same lands and premises that Boo Hoe Kwa and Kuo Fan Tze by deed dated May 30, 2006 and recorded on June 7, 2006 in the Office of the Recorder of Deeds in and for New Castle County, State of Delaware, with Instrument No. 20060607-0054478, did grant and convey unto Eric Kingara, in fee.

SEIZED AND TAKEN IN EXECUTION AS THE PROPERTY OF ERIC KINGARA.

TERMS OF SALE: 10% DOWN AT TIME OF SALE. BALANCE DUE ON OR BEFORE JANUARY 5, 2009.

OCTOBER 31, 2008

**SHERIFF'S SALE**

By virtue of a writ of LEV FAC #143 OC, AD., 2008.

PARCEL NO. 10-048.20-009

PROPERTY ADDRESS: 148 S. King's Croft Drive, Bear, DE 19701

ALL that certain lot, piece or parcel of land with the improvements thereon erected, situate in New Castle Hundred, New Castle County and State of Delaware, known as #148 South King's Croft Drive (a/k/a 148 South Kingscroft Drive), Scarborough Manor being Lot 29, Block A, on the Record Major Subdivision Plan of King's Croft as said plan is of record in the Office of the Recorder of Deeds in and for New Castle County, Delaware, in Microfilm No. 4637 and being more particularly bounded and described in accordance with a survey prepared by Merestone Consultants, Inc.

BEING the same lands and premises which Cartus Financial Corporation did by deed dated November 7, 2006 and recorded in the Office of the Recorder of Deeds, New Castle County, Delaware in Instrument No. 20061207-0115391 did grant and convey unto Timothy Campbell.

SEIZED AND TAKEN IN EXECUTION AS THE PROPERTY OF TIMOTHY CAMPBELL.

TERMS OF SALE: 10% DOWN AT TIME OF SALE. BALANCE DUE ON OR BEFORE JANUARY 5, 2009.

OCTOBER 31, 2008

(Continued)



## LEGAL NOTICE

## LEGAL NOTICE

The Newark Housing Authority 2009 Annual Plan is available for review by the public. It can be reviewed during business hours from 8:30 a.m. - 12:00 p.m. and from 1:00 p.m. to 4:30 p.m., Monday through Friday from **November 17 - January 2, 2009**. All comments must be in writing and submitted within the review period. A public hearing is scheduled for **January 5** at 5:00 p.m. np 11/14,21,28,12/5,12,19,26,1/2

**CITY OF NEWARK  
DELAWARE  
BOARD OF ADJUSTMENT  
PUBLIC HEARING  
DECEMBER 18, 2008 - 7:30 P.M.**

Pursuant to Chapter 32, Article XIX of the Code of the City of Newark, Delaware, notice is hereby given of a public hearing at a regular meeting of the Board of Adjustment on **Thursday, December 18, 2008 at 7:30 p.m.** in the Council Chamber, Newark Municipal Building, 220 Elkton Road, Newark, Delaware, to hear the following appeal:

1. The appeal of Hal Prettyman, for the property at 37 A & B Benny Street, for the following variances:
  - a) 32-10 (c) (1) - Minimum Lot Area - Requires 6,250 square foot per unit. Plan shows a total of 8,500.
  - b) 32-10 (c) (3) - Minimum Lot Width - Requires fifty (50) feet per unit. Plan show a total of fifty (50) feet.
  - c) 32-51 (a) - A building which is not in conformity with RD zoning may be altered up to 20% of the cubical content of the existing building. Existing structure is 9,600 cubical feet. Proposed plan calls for 19,200 cubical feet, an alteration of 50% of the cubical content.

## ZONING CLASSIFICATION: RD

The application and related material may be examined at the City Secretary's Office, 302-366-7070, prior to the meeting.

Clayton S. Foster  
Chairman

np 12/5

## LEGAL NOTICE

**CITY OF NEWARK  
DELAWARE  
SPECIAL COUNCIL MEETING  
MONDAY, DECEMBER 15, 2008 - 7:00 PM**

A Special Meeting of Council will be held on **MONDAY, DECEMBER 15, 2008, at 7:00 pm**, in the Newark Municipal Building, 220 Elkton Road, at which time the Mayor and Council will discuss the proposed 2009 General Operating Budget.

Patricia M. Fogg, CMC  
City Secretary

np 12/5

## LEGAL NOTICE

**NEWARK WINGS, LLC t/a HOOTERS/FIREWATERS OF NEWARK**, has on **December 5, 2008** applied with the Office of the Alcoholic Beverage Control Commissioner for a restaurant liquor license to include Sunday and a patio permit, for a premises located at Units 132 & 136 Astro Shopping Center, 2651 Kirkwood Highway, Newark, DE 19711.

Persons who are against this application should provide written notice of their objections to the Commissioner. For the Commissioner to be required to hold a hearing to consider additional input from persons against the application, the Commissioner must receive one or more documents containing a total of at least 10 signatures of residents or property owners located within 1 mile of the premises or in any incorporated areas located within 1 mile of the premises. The protest(s) must be filed with the Office of the Alcoholic Beverage Control Commissioner at the 3rd Floor, Carvel State Building, 820 North French Street, Wilmington, DE 19801. The protest(s) must be received by the Commissioner's office on or before **January 5, 2009**. Failure to file such a protest may result in the Commissioner considering the application without further notice, input, or hearing. If anyone has questions regarding this matter please contact the Commissioner's office.

np 12/5,12,19

## LEGAL NOTICE

The following Sentinel Self Storage sites will be holding public auctions on **January 14, 2009**. All sales are cash only and final. A \$100 cash deposit is required to purchase a unit.

**SENTINEL SELF STORAGE**

200 First State Boulevard  
Wilmington DE, 19804  
302-999-0704

Public auction to be held on **January 14, 2009 at 11:00 a.m.** The following units will be auctioned:

- #1105 - Karla A. Coleman - bed frame, mattress, 10 boxes, chest of drawers, couch, dresser, rug, 6 totes
- #1206 - Kathleen Manuel - 3 boxes, rocking chair, 2 bean bag chairs, Christmas decorations
- #1263 - Anthony L. Cheeks - 7 bags, 2 mattresses, 6 boxes, 2 entertainment centers, 2 lamps, 2 night tables, 3 totes, 2 TV's, 2 remote trucks.
- #1337 - Rachel Flagg - 9 bags, mattresses, 15 boxes, dresser, 10 totes, toys, TV
- #4109 - Walter L. Haywood, Jr. - mattress, 2 boxes, chair, couch, dresser, exercise equipment, love seat, 2 end tables, 2 TV's, weight bench, weights
- #6179 - Michael S. Jackson - bed frame, box spring, mattress, 2 boxes, kitchen chair, fan, lamps, mirrors, speakers, table, TV
- #6252 - Ida Mae Reeves - 7 bags, 5 boxes, Christmas tree
- #6281 - Frances Chambers - A/C, 5 boxes, suitcase, rug, 16 totes, trophies
- #9242 - Cynthia Hill Jones - 3 bags, 20 boxes, toys
- #9277 - Carmen Guzman - 6 bags, 6 boxes, chest of drawers, 2 tool boxes, hutch, bowling ball
- #9416 - Lawrence Spencer - 1 bag, suitcase, tool box, 4 totes, copier, Christmas tree
- #9419 - Stephanie A. Royle - 2 boxes, monitor, suitcase, 1 tote, TV, baseball cards

**SENTINEL SELF STORAGE**

465 Pulaski Hwy.  
New Castle, DE 19720  
302-328-5810

A public auction will be held on **January 14, 2009 at 1:00 p.m.** The contents of the following storage units will be auctioned.

- #3045 - Arricka Burruss - baby stroller, bags, bed, boxes, couch, dresser, entertainment center, love seat, table, toys, futon, TV, TV stand
- #4175 - Randy Romine - boxes, microwave, stereo, speakers, totes
- #4162 - Robert Porter - suitcase, vacuum, tennis racket, DVD's

**SENTINEL SELF STORAGE**

333 E. Lea Blvd.  
Wilmington, DE 19802  
302-764-6300

Public auction to be held on **January 14, 2009 at 12:00 p.m.** at the above address. All sales are cash only. All sales are final. The units to be auctioned are as follows:

- #40 - Tabernacle Full Gospel Baptist Church - bags, boxes, filing cabinet, office chair, computer, couch, monitor, kitchen table
- #51 - Kesonina Snead - air conditioner, boxes, clothing, microwave, totes, toys, TV
- #56 - Renee Clayton - boxes, folding chair, speakers, grill, pillow
- #104 - Beatrice Derrick - kitchen chair, pictures, kitchen table, trunk, trash can
- #126 - Jade M. Lord - bags, bed, mattress, boxes, chest of drawers, pictures, ironing board, stereo, TV, printer
- #171 - Sharmina Ellis - bags, filing cabinet, totes, boxes
- #221 - Sheena Mable - air conditioner, bed, headboard, mattress, totes, TV, kitchen chair, freezer, refrigerator, coffee table
- #222 - Kesonina Snead - boxes, chest of drawers, clothing, computer, totes
- #232 - Ian Buterbaugh - bags, boxes, filing cabinet, shelving, speakers, stereo, suitcase, kitchen table, printer, golf clubs
- #275 - Robert Truesdale - bags, ice chest, suitcase, totes, bats
- #500 - James Hall - bicycle, boxes, couch, table lamp, microwave, rug, coffee table, tool box, handtruck, antique furniture, grill

np 12/5,12



RENTALS

**305 APARTMENTS UNFURNISHED**

**ELKTON 1 & 2 br apt**  
\$500 - \$700 + sec hot  
water incl no pets Call  
302-463-6862



**CHECK OUT  
CHESAPEAKE  
CLASSIFIEDS  
EVERYDAY FOR  
THAT NEW  
JOB!**

## LEGAL NOTICE

**THE COURT OF  
COMMON PLEAS  
FOR THE STATE  
OF DELAWARE  
IN AND FOR  
NEW CASTLE  
COUNTY**

IN RE: CHANGE OF  
NAME OF  
Margaret Niemann  
Ellifritz  
PETITIONER(S)  
TO  
Margaret Mary  
Niemann  
NOTICE IS HEREBY  
GIVEN that Margare  
t Niemann Ellifritz  
intends to present a  
Petition to the Court  
of Common Pleas for  
the State of Delaware  
in and for New Castle  
County, to change her  
name to Margaret  
Mary Niemann.  
Margaret Niemann  
Ellifritz  
Petitioner

Dated: 12/1/08  
np 12/5,12,19

**THE COURT OF  
COMMON PLEAS  
FOR THE STATE  
OF DELAWARE  
IN AND FOR  
NEW CASTLE  
COUNTY**

IN RE: CHANGE OF  
NAME OF  
Albert Paul Forline  
Sonia Angela Forline  
PETITIONER(S)  
TO  
Albert Forlini  
Sonia Angela Forlini  
NOTICE IS HEREBY  
GIVEN that Albert  
Paul Forline and Sonia  
Angela Forline intend  
to present a Petition to  
the Court of Common  
Pleas for the State of  
Delaware in and for  
New Castle County, to  
change his/her name to  
Albert Forlini and  
Sonia Angela Forlini.  
Albert Paul Forline  
Sonia Angela Forline  
Petitioners

Dated: Nov. 19, 2008  
np 11/28,12/5,12

					
<b>Anne Menaquale</b> 302-631-1652	<b>Fran McCann</b> 302-631-1660	<b>Luz Ruiz</b> 302-631-1678	<b>Michelle Shorter</b> 302-631-1685	<b>The Ruckle Team</b> 302-631-1686	<b>Judy Marvel</b> 302-631-1649
					
<b>2 Deasy Drive, Newark, DE \$259,900</b> 4 bedroom, 2.5 bath w/front wrap around porch. Owner's suite has deep soaking tub w/sep. shower, double vanity and large walk-in closet. Hardwood foyer, main level laundry, large rear deck. Call Anne Menaquale 302-631-1652.	<b>16 Ann Marie Court, Newark, DE \$199,900</b> 3 bedroom townhome on cul-de-sac. Main floor has open floor plan w/9 foot ceiling, cheerful kitchen, formal dining and living room. Vaulted ceiling in master bedrooms. One car garage. Call The Webster Team 302-631-1657	<b>107 Radcliffe Drive, Newark, DE \$284,400</b> 4 Bedroom, 2.1 bath spotless split. Fresh paint and new front siding. Excellent built-in bookcases in family room. Lush yard. Easy walk or bike ride to downtown Newark or University of Delaware. Call Rob Medicus 302-631-1677			
					
<b>7 Crown Point, Newark, DE \$146,000</b> 3 bedroom, 2.5 bath townhome. Fireplace. Perfect starter home or investment. Fresh paint. Entire home has been replaced, updated or fixed. Call Seth or Michelle Plymyer 302-631-1667.	<b>4 Regent Circle, Limestone Acres \$265,000</b> 4 Bedroom, 2 bath Cape Cod located in quiet cul-de-sac. Large front porch. Hardwood floors. Finished basement. Fenced back yard. Call Jeff Eckerson 302-631-1673	<b>613 Bonnie Lane, Todd Estates \$245,900</b> Renovated 4 bedroom, 2 bath. New eat-in kitchen w/42" maple Kraft Maid cabinets, granite counters, stainless appliances and ceramic tile floor. Both baths new too. Family room has skylight and new berber carpeting. All new windows. Call Maria Ruckle 302-631-1686			



**Prudential**  
302-368-1621

**Fox & Roach REALTORS®**  
NEWARK MARKETING CENTER  
850 Library Ave. Newark, DE 19711





### 305 APARTMENTS UNFURNISHED

ELKTON lg 1BR in town incl water & sewer no pets \$575/mo + sec dep 443-350-2291



Offering 1 and 2 Bedroom Market & Affordable Housing Units

★Income Guidelines Apply★

13-D O'Daniel Avenue Newark, DE 19702

For rental information please call:

302-368-2357

Proudly Managed By Fairville Management Company, LLC



### 315 HOUSES FOR RENT

ELKTON 3br, 1.5ba townhouse. \$785/mo. 850-867-9045

ELKTON t/h's end unit 2-3br's 1.5 ba off st parking, no pets. \$940/mo +sec 410-398-4781 Rent to own!

WWW.CHESEAPEAKECLASSIFIED.COM

### LEGAL NOTICE

#### THE COURT OF COMMON PLEAS FOR THE STATE OF DELAWARE IN AND FOR NEW CASTLE COUNTY

IN RE: CHANGE OF NAME OF Linda Ann Malinowski PETITIONER(S) TO Linda Ann Harms NOTICE IS HEREBY GIVEN that Linda Ann Malinowski intends to present a Petition to the Court of Common Pleas for the State of Delaware in and for New Castle County, to change his/her name to Linda Ann Harms. Linda Ann Malinowski Petitioner

Dated: 12/1/08 np 12/5,12,19

### 365 COMMERCIAL RENTALS

ELKTON- Office Bldg 3,523 sq. ft., close to Rt 40 & I-95. Ample parking. 443-553-1517



### REAL ESTATE

### 432 MOBILE HOMES

MOBILE HOME removal, salvage & parts. Call for removal quote. 717-464-4461 or 410-658-9588

WWW.CHESEAPEAKECLASSIFIED.COM



### SERVICES

### 520 HOME IMPROVEMENT SERVICES

A-A-A PAINTING Professional painting. 25 yrs exp. No job to large or to small. Free estimates, senior discount. 410-392-6906



### LEGAL NOTICE

#### CITY OF NEWARK DELAWARE CITY COUNCIL PUBLIC HEARING NOTICE

DECEMBER 8, 2008 - 7:30 P.M.

Pursuant to Section 402.2 of the City Charter and Section 32-79 of the Code of the City of Newark, Delaware, notice is hereby given of a public hearing at a regular meeting of the Council in the Council Chamber at the Municipal Building, 220 Elkton Road, Newark, Delaware, on **Monday, December 8, 2008 at 7:30 p.m.**, at which time the Council will consider for Second Reading and Final Passage the following proposed Ordinance:

Bill 08-24 - An Ordinance Amending the Zoning Map of the City of Newark, Delaware, By Rezoning from RM (Multi-Family Dwellings-Garden Apartments) to BLR (Business Limited Residential) a .3513 Acre Property Located at the Southeast Corner of the Intersection of Choate and New Streets (TABLED 9/22/08)

Patricia M. Fogg, CMC City Secretary

np 12/5

### 520 HOME IMPROVEMENT SERVICES

A-1 HANDYMAN- All Home repairs, remodeling, decks, siding, snow removal 302-218-1313 or 443-951-5074



ANY WAY YOU LOOK AT IT, CHESAPEAKE CLASSIFIED CAN WORK FOR YOU!

### LEGAL NOTICE

#### THE COURT OF COMMON PLEAS FOR THE STATE OF DELAWARE IN AND FOR NEW CASTLE COUNTY

IN RE: CHANGE OF NAME OF Nelyse Aleksandria Patrick PETITIONER(S) TO Barin Nelyse A. Kardashian NOTICE IS HEREBY GIVEN that Nelyse Aleksandria Patrick intends to present a Petition to the Court of Common Pleas for the State of Delaware in and for New Castle County, to change his/her name to Barin Nelyse A. Kardashian. Nelyse A. Patrick Petitioner

Dated: Nov. 12, 2008 np 11/21,28,12/5

### LEGAL NOTICE

#### THE COURT OF COMMON PLEAS FOR THE STATE OF DELAWARE IN AND FOR NEW CASTLE COUNTY

IN RE: CHANGE OF NAME OF Guillermina Borrero PETITIONER(S) TO Lydia G. Borrero NOTICE IS HEREBY GIVEN that Guillermina Borrero intends to present a Petition to the Court of Common Pleas for the State of Delaware in and for New Castle County, to change his/her name to Lydia G. Borrero. Guillermina Borrero Petitioner

Dated: 11/21/08 np 12/5,12,19

#### THE COURT OF COMMON PLEAS FOR THE STATE OF DELAWARE IN AND FOR NEW CASTLE COUNTY

IN RE: CHANGE OF NAME OF Timothy Earl Histen PETITIONER(S) TO Timothy Earl Dukes-Histen NOTICE IS HEREBY GIVEN that Timothy Earl Histen intends to present a Petition to the Court of Common Pleas for the State of Delaware in and for New Castle County, to change his/her name to Timothy Earl Dukes-Histen. Timothy Earl Histen Petitioner

Dated: Nov. 20, 2008 np 11/28,12/5,12

### LEGAL NOTICE

#### CITY OF NEWARK DELAWARE

#### TRAFFIC COMMITTEE

#### DECEMBER MEETING NOTICE

The City of Newark Traffic Committee meeting scheduled for **Tuesday, December 16, 2008** has been cancelled due to a lack of agenda items. np 12/5

#### CITY OF NEWARK DELAWARE

#### COUNCIL MEETING AGENDA DECEMBER 8, 2008 - 7:30 PM - CC

#### 1. SILENT MEDITATION & PLEDGE OF ALLEGIANCE

#### 2. CITY SECRETARY'S MINUTES FOR COUNCIL APPROVAL:

A. Regular Council Meeting of November 24, 2008

#### 3. ITEMS NOT ON PUBLISHED AGENDA:

- A. Public (5 minutes per speaker)
- B. University
  - (1) Administration
  - (2) Student Body Representative
- C. Council Members

#### 4. ITEMS NOT FINISHED AT PREVIOUS MEETING:

- A. 2009 General Operating Budget Approval (Public Hearing held November 10 & 24, 2008)
- B. Bill 08-24 - An Ordinance Amending the Zoning Map of the City of Newark, By Rezoning from RM (Multi-Family Dwellings - Garden Apartments) to BLR (Business Limited Residential) a .3513 Acre Property Located at the Southeast Corner of the Intersection of Choate and New Streets (TABLED 9/22/08 - SEE Item 7-A)

#### 5. RECOMMENDATIONS ON CONTRACTS & BIDS: None

#### \*6. ORDINANCES FOR SECOND READING & PUBLIC HEARING: None

#### \*7. PLANNING COMMISSION/ DEPARTMENT RECOMMENDATIONS:

- A. Request of James and Karen Lisa for the Minor Subdivision of a .3513 Acre Property Located at the Intersection of Choate and New Streets to Construct Four Townhouse-Style Apartments to be Known as Choate Street Commons (AGREEMENT & RESOLUTION SUBMITTED - SEE 4-B)

#### 8. ORDINANCES FOR FIRST READING: None

#### 9. ITEMS SUBMITTED FOR PUBLISHED AGENDA:

#### \*A. COUNCIL MEMBERS:

- 1. Resolution 08-\_: To Adopt Other Post-Employment Benefits (OPEB) Trust and to Authorize Staff to Select Custodian of Trust Assets

#### B. COMMITTEES, BOARDS & COMMISSIONS:

- 1. Planning Commission Minutes of November 5, 2008

#### \*C. OTHERS: None

#### 10. SPECIAL DEPARTMENTAL REPORTS:

- A. Special Reports from Manager & Staff: None
- B. Alderman's Report

#### OPEN FOR PUBLIC COMMENT

The above agenda is intended to be followed, but is subject to changes, deletions, additions and modifications, as permitted under the Freedom of Information Act of the State of Delaware. Copies may be obtained at the City Secretary's Office, 220 Elkton Road, or online at [www.cityofnewarkde.us](http://www.cityofnewarkde.us) np 12/5

## Here's My Card

Local Businesses At A Glance



To advertise your services in Here's My Card

Call Susie Moore 410-398-3311 ext. 3004 Cell: 302-650-0212

### CONSTRUCTION

Free Estimates Voice Mail 717-786-0271

#### Double E Construction Ltd. Quarryville, PA

- New Construction
- Roofing & Siding
- Barns & Garages
- Additions
- Decks

Ephraim Smucker

Customer Satisfaction Keeps Us In Business

### LEGAL NOTICE LEGAL NOTICE LEGAL NOTICE LEGAL NOTICE LEGAL NOTICE LEGAL NOTICE LEGAL NOTICE LEGAL NOTICE

(Continued)

#### SHERIFF'S SALE

By virtue of a writ of LEV FAC #151 OC, AD., 2008.

PARCEL NO. 11-046.20-216

PROPERTY ADDRESS: 9 Kerrin Road, Bear, Delaware 19701

ALL that certain lot, piece or parcel of land with the buildings thereon erected, situate in Pencader Hundred, New Castle County, Delaware, being Lot No. 461, also known as 9 Kerrin Road, as shown on the Record Resubdivision Plan of Brennan Estates, prepared by Karins and Associates, and recorded in the Office of the Recorder of Deeds in and for New Castle County, Delaware in Microfilm No. 13274, and being more particularly bounded and described in accordance with a survey prepared by Merestone Consultants, Inc., dated June 5, 2000, as follows, to-wit:

BEING the same lands and premises that Blenheim Brennan, L.L.C. and Blenheim Homes, L.P. by deed dated June 16, 2000 and recorded in the Office of the Recorder of Deeds in and for New Castle County, State of Delaware, in Deed

book 2847 Page 78, did grant and convey unto Christopher L. McCuen and Brandi L. McCuen and Brandi L. McCuen, in fee.

SEIZED AND TAKEN IN EXECUTION AS THE PROPERTY OF CHRISTOPHER L. MCCUEN AND BRANDI L. MCCUEN.

TERMS OF SALE: 10% DOWN AT TIME OF SALE. BALANCE DUE ON OR BEFORE JANUARY 5, 2009.

OCTOBER 31, 2008

#### SHERIFF'S SALE

By virtue of a writ of LEV FAC #153 OC, AD., 2008.

PARCEL NO. 08-038 20-306

PROPERTY ADDRESS: 25 St. John Drive, Wilmington, DE 19808

ALL that lot, piece of land with building thereon, situate in Mill Creek Hundred, New Castle County, Delaware being designated as Lot 19, Block H, as shown on the Plan of Dunlinden Acres, 25 St. John Drive, of record in the Office of the Recorder of Deeds in and for New Castle County, Delaware

in Instrument No. 20050811-0079728, said lot also known as 25 St. John Drive and now more particularly described by The Pelsa Company as follows, to-wit:

AND BEING the same lands and premises which Charles A. Jefferson and Diane R. Jefferson by Deed dated September 30, 1993 and recorded in the Office of the Recorder of Deeds in and for New Castle County, Delaware in Deed Book 1598 Page 0278 did grant and convey unto Clifton L. Sykes, Jr. and Lisa N. Duphily, in fee.

SEIZED AND TAKEN IN EXECUTION AS THE PROPERTY OF CLIFTON L. SYKES, JR. AND LISA N. DUPHILY.

TERMS OF SALE: 10% DOWN AT TIME OF SALE. BALANCE DUE ON OR BEFORE JANUARY 5, 2009.

OCTOBER 31, 2008

Michael P. Walsh, Sheriff  
Sheriff's Office  
Wilmington, Delaware

np 11/28,12/5



### 520 HOME IMPROVEMENT SERVICES

**Handcraft Homes & Improvements, Inc.**

- Custom Homes
- Additions
- Garages

All Phases of Home Improvement, Repair, and Remodeling

MHIC# 27702

**410-472-2780**

**WE BUY JUNK CARS, TRACTOR TRAILERS, Dump Trucks or any heavy equipment machinery.**

Cash paid.

**302-650-4579**

### 555 FIREWOOD SERVICES

**FIREWOOD** 1 year seasoned oak & others

MD \$185, DE \$200/cord. MD \$115, DE \$125 1/2 cord.

Wholesale also. Lic# 00-3352 410-392-5175

**MERCHANDISE**

### 602 ANIMALS/PETS

**FERRET (1) \$50**

**302-533-6322**

**CLASSIFIEDS**

**410-398-1230**

**800-220-1230**

### 602 ANIMALS/PETS

**LAB PUPS - AKC**

Taking deposits, ready for Christmas. 410-275-9267 No Sun call

**POODLE & POODLE MIXES** raised in the home. Some young adults. Guar. \$300 & up. 717-529-3785

**PUG PUPPIES. ADORABLE! AKC 3 F, 2 M, S & W. 9 wks old \$750.**

410-398-7027

**TOY POODLES AKC** white, m/f, taking deposits, ready 12/12 call 410-322-9440

**WHAT BETTER FOR A LOVED ONE THAN A PUPPY UNDER THE CHRISTMAS TREE!**

German Shepherd pups \$375 each AKC Reg. 2 males, 3 females, 1st shots & wormed. Taking deposits now. Ready for pick up Christmas Eve 443-553-6776

**YELLOW LAB PUPS** ACA Family raised, shots & wormed. Great Christmas gift! Ready Dec 22. \$400 each. 717-548-0869

### 610 ANTIQUES / ART

**DINING SET DUNCAN PHYFE** side board, double pedestal table & 6 chairs priced to sell at \$600 302-378-4726

**RECLINE, RELAX & RESELL**

### 622 ELECTRONICS

**BARGAIN**

TV. RCA 26" console, oak cabinet, cable ready. Exc cond. \$75. 410-658-1883

### 625 FURNITURE / FURNISHINGS

**BARGAIN**

**DINING ROOM TABLE, glass \$50.**

302-423-3005

**BARGAIN**

**DRESSERS (2)** with Mirror. \$50 for both or will separate. 302-423-3005

**ENTERTAINMENT center.** Oak veneer, modular, 5 pcs., 3 lighted glass doors, 2 lrg. drawers. Exc. cond. \$250 OBO. 410-392-4474

### 640 GENERAL MERCHANDISE

**CASH PAID FOR JEWELRY OF ANY KIND**

**302-373-2319**

**HANDMADE DECORATED CHRISTMAS BASKET.** 13 Christmas bags brand new, Victoria Christmas set gift collection 10 pc handpainted and cold cast made in China & Indonesia. Victorian Christmas set by Novelino gift collections. \$25.00 for all. Call 443-350-9382 or 443-207-0138

WWW.CHEESAPEAKECLASSIFIED.COM

### 640 GENERAL MERCHANDISE

**BARGAIN**

**MOUNTAIN BIKE** 730 Trek. \$50

302-423-3005

**SLOT MACHINES** real one armed bandits, \$275 & up. 610-687-2282

### 642 SPORTING GOODS

**GUN & KNIFE SHOW**

at the Tall Cedars Building in Puddy Hill Shopping Center. 2501 Puddy Hill Avenue Parkville, Md. Open to the public Saturday December 13th 9-4 and Sunday December 14th 9-3. Admission \$6.00, parking is free. For info 717-697-3088

### 660 YARD SALES

**YARD SALE / HOLIDAY BAZAAR**

Sat, Dec 6, 10am-3pm. 482 Blake Rd, Elkton. (Off 273 to Fairview to Blake) Baked goods, apple butter & jelly, fudge, live & artificial wreaths, holly, much more! Please no early birds!

### 740 FARM SUPPLIES & EQUIPMENT

**TRACTOR 1970** Massey - Ferguson 165 front end loader. \$3500 610-716-0143

**Classified is the key**

to more sales.

**TRANSPORTATION**

### 630 MARINE ACCES./STORAGE

**150 HP Mercury** Outboard Motor \$600 or BO. Please call 443-907-4831

### 650 MOTORCYCLES & ATVS

**HONDA 750 VR7 V4** '97. Low miles, very fast bike. Good cond. Clean. \$2800. Scorpion helmet, limited ed., \$200. 443-350-9114

**RECLINE, RELAX & RESELL**

### 650 MOTORCYCLES & ATVS

**ROKETA 250 '08** Only 718 miles. Black. Trunk on back. \$2,700 410-398-8969aft 4:30p

**YAMAHA YZ125 '03** Takasago Excel rims & suspension upgrades. \$2100 410-658-4003

### 660 AUTO PARTS & ACCESSORIES

**400 TURBO** Transmission \$400, Rebuilt 350 engine \$750, 71-81 Standard Camaro hood \$35, 16 inch Chevy truck rims & tires will fit a 1999-2004 \$375. Please call 443-907-4831

**CARGO COVER, Fiberglass.** Off '94 Chevy pickup. Needs hinge repair. Green. \$350 b/o 443-567-1264

### 678 ANTIQUE AUTOS

**CHEVY 2 DOOR HARDTOP 1941** all original. Call for details b/o 717-598-1554

### 680 AUTOS

**FORD- Taurus '99,** great cond. Red sparkle paint, New eng. 30 k mi. \$2,500. Call: 443-693-2632

### 690 WANTED To Buy

**WE BUY JUNK cars, trucks & vans.** \$100 and up. Call 302-420-7411 or 302-650-4579

**WE BUY SCRAP METAL!** Call for free pick up and appraisal. We buy from small mailbox cars to large industrial buildings! 302-650-4579

**EXIT**

**CHESAPEAKE BAY** 349 E. Pulaski Hwy. Elkton, MD 21921

Direct: (443)553-6726  
Office: (410) 398-9000  
E-mail: 511bill@mrts.com

**BILL STANDIFORD**  
Associate Broker, GRI  
Cecil County Specialist

**CecilBANK**  
www.cecilbank.com

**410-392-LEND**

Call Sandy Feltman or John Ness for all your financing needs

Local Lending with Local Servicing • Fixed and adjustable Rate Mortgages  
• Construction to Permanent • Lot Loans • Bridge Loans  
40 YEAR TERM AVAILABLE • FREE PRE-QUALIFICATION • NO APPLICATION FEES

**ARDENT TITLE COMPANY**

**Susan M. Knight • Settlement Agent**  
149-151 E. Main Street, Elkton, MD 21921  
(410) 996-9780 • Fax (410) 996-9784 • info@ardenttitle.com

LENDER	Phone Number	15 YEAR Fixed % PTS. APR	30 YEAR Fixed % PTS. APR	1 YEAR ARM % PTS. APR	3 YEAR ARM % PTS. APR	5 YEAR ARM % PTS. APR
APGFCU	1-888-LOAN-391	5.125/1.750/5.311	5.375/1.000/5.508	4.875/1.000/4.078	5.250/1.000/4.221	5.500/1.000/4.521
CECIL BANK	(410) 398-1650	*PLEASE CALL FOR RATES				
CECIL TRUST MORTGAGE & LOAN	(410) 287-1515	5.875/0/5.977	6.375/0/6.437	*PLEASE CALL FOR RATES		
CLASSIC MORTGAGE CORP	(302) 366-1661	5.625/0/5.86	6.0/0/6.21	CALL FOR MORE RATES		
DESTINY HOME MORTGAGE	(410) 620-4197	*PLEASE CALL FOR RATES <a href="http://destinyhomemortgage.com">destinyhomemortgage.com</a>				
HARFORD BANK	(410) 642-9160	6.25/0/6.432	6.5/0/6.697	*PLEASE CALL FOR RATES		
MBA FINANCIAL SERVICES	(410) 287-5600	Please call for quotes. Many programs. All credit considered.		100% financing available-Interest only options! 1st time home buyers, 2nd homes & investment properties.		
PEOPLES BANK OF ELKTON	(410) 996-2265	6.125/0/6.27	6.00/0/6.08	6.125/0/4.16	6.125/0/4.505	6.25/0/4.85
WILMINGTON MORTGAGE	(410) 398-5607	PLEASE CALL FOR RATES.		FREE PRE-APPROVAL - NO APPLICATION FEE		

These rates, effective 11/25/08, were provided by the lenders and are subject to change. Other terms may be available. These rates are for existing first mortgages. Points may vary on refinances. Down payment requirements may vary. \*Caps and length may vary on adjustable rates. The APR is based on a \$100,000 mortgage with a 20% down payment and is in addition to interest included points fees & other credit costs. To list your mortgage rates, call our Real Estate Sales Division at 410 398-3311 or 1-800-220-3311. These mortgage rates are a paid advertising feature of the Cecil Whig

**WILMINGTON MORTGAGE**

205 East Main Street, Elkton, MD 21921  
Office: 410-398-5607  
TOLL FREE: 800-607-5607

  
Phil Davis  
Loan Officer
   
Kim Pettitt  
Loan Officer
   
Bruce Fink  
Loan Officer

- 100% Financing
- FHA, VA, and Rural Development
- Self Employed
- Bridge Loans
- Reverse Mortgages



# 20th Anniversary Celebration!

# 20

**\$20,000 off**

the base price

**Plus \$20,000**  
in free options

**Act now**  
to take advantage  
of the Government  
Housing Act before  
it expires!

## FACT:

According to the National Association of Realtors, on average, the value of a new home nearly doubles every 10 years regardless of when it was purchased.

Benchmark Builders proudly announces the unprecedented opportunity to save \$40,000 on a wide choice of home designs in all of our communities...\$20,000 off the base price of any new home, plus \$20,000 in free options to make it uniquely yours. Whether you are looking for a modern interpretation of a classic ranch home, traditional two-story single-family model, or a gorgeous residence in a 55+ community, the timing couldn't be better.



[www.benchmarkbuilders.com](http://www.benchmarkbuilders.com)

Prices subject to change without notice.



**Celebrating 20 years  
of shaping  
the future of home  
building.**

### SINGLE-FAMILY HOME COMMUNITIES



#### PROVIDENCE CROSSING

Clayton, Delaware  
One & two story  
single-family homes from the **\$200's**  
(302) 659-6537

Sales Center is open Friday through Tuesday  
11 a.m. - 5 p.m. Take Rte. 1 South to Smyrna  
(exit 119A) to Rte. 13 S. Turn right onto

Rte. 300. The Sales Center is 2.5 miles on the left.



#### ACADEMY HILL

Newark, Delaware  
One & two story  
single-family homes from the **\$380's**  
(302) 368-1141

Sales Center is open Thursday through  
Monday 11 a.m. - 5 p.m. From I-95 take exit  
1B (Rte. 896N/Newark). Go north towards  
Hill Road. Follow for 1 mile and the community will be on the right.



#### WILLOW OAK FARMS

Bear, Delaware  
One & two story  
single-family homes from the **\$320's**  
(302) 834-2480

Sales Center is open Friday through Tuesday  
11 a.m. - 5 p.m. Take Rte. 1 South and take  
exit 152 (Rte. 72/Wrangle Hill Rd.). Turn right onto Rte. 71/Red Lion Road.  
The Sales Center will be on your immediate left.

### ACTIVE ADULT COMMUNITIES



#### MILLTOWN VILLAGE

Pike Creek, Delaware  
Single-family detached homes  
and carriage twin homes from the **\$400's**  
(302) 366-1515

Sales Center is open daily 11 a.m. - 5 p.m.  
From I-95, take Exit 4B and follow Rte. 7North  
for 3.5 miles and turn left onto Kirkwood Hwy. (Rte. 2), then proceed 1.6 miles  
and turn right onto Pike Creek Rd. The Sales Center will be on your right.



#### VILLAGE OF EASTRIDGE

Clayton, Delaware  
Single-family  
detached homes from the **\$280's**  
(302) 659-3783

Sales Center is open daily 11 a.m. - 5 p.m.  
From Rte. 1, take the South Smyrna Exit  
(Exit 114). Make a left onto Rte. 13 south and follow for approximately 1 mile to  
Brenford Road. Turn right onto Brenford Road and follow for 2.5 miles. The Sales  
Center will be on the left.



#### VILLAGE OF LONG CREEK

Newark, Delaware  
Single-family  
detached homes from the mid **\$300's**  
(302) 838-7925

Sales Center is open daily 11 a.m. - 5 p.m.  
From I-95, take Exit 1-A (Rte. 896 South),  
turn right onto Rte. 40 and, at the next intersection, left onto old Rte. 896.  
After 1/3-mile, the community entrance will be on your right at Paxson Lane.



# Why pay more than you have to!

## Your Community Credit Union

Filling the community's needs .....

- Low Rates on Home & Auto Loans
- Free Phone Teller
- Free Bill Payer
- Free Online Banking
- Free Website
- Free Financial Counseling
- Free Notary Service
- Free Financial Planner
- No Fee Checking
- Free Direct Deposit
- Free ATM Transactions
- Free Loan Pre-Approval
- Free E-Statement
- Over 25,000 Surcharge-free ATMs
- Over 3,000 Shared Branches Nationwide
- Personal Loans
- No Fee Youth Accounts

We now have  
First Mortgages

apply online at  
[www.americanspirit.org](http://www.americanspirit.org)

Ask us about our youth  
accounts & programs  
for young adults.



**American  
Spirit**

Federal Credit Union

1110 Elkton Road, Newark, DE 19711

(302) 738-4515

Membership is open to anyone who:

- lives • works • worships • goes to school or
- belongs to any association in the City of Newark

[www.americanspirit.org](http://www.americanspirit.org)

[eatdowntownnewark.com](http://eatdowntownnewark.com) [shopdowntownnewark.com](http://shopdowntownnewark.com) [enjoydowntownnewark.com](http://enjoydowntownnewark.com)

# EatShopEnjoy!

★ **WINTERFEST** – Friday, December 5, 2008 6-9 PM - Academy Lawn,  
including the 5 K Reindeer Run benefiting Special Olympics Delaware  
Visit [www.SODE.org](http://www.SODE.org) for race registration and information.

LOOK  
FOR OUR  
REUSABLE  
TOTE BAG!

★ Wonderful Winter Wednesdays – 12/3, 12/10 & 12/17.  
FREE Parking after 3 PM, Restaurant and Retail Specials.

★ **FREE Holiday Movie Matinees**  
**Saturdays 11 AM**

Cinema Center 3 – Newark Shopping Center. Free admission with a  
non-perishable food donation for the Newark Area Welfare Committee.

12/6 - Prancer 12/13 - A Christmas Story  
12/20 - Miracle on 34th Street 12/27 - Polar Express

★ Newark's Window Decorating Contest! 3 ways to vote for your favorite Window Display  
• at Winterfest • at the Newark Parking Office or • by e-mailing your selection to  
[dnp@newark.de.us](mailto:dnp@newark.de.us). All votes must be received by Dec. 10th.

All In One!

**Downtown Newark**

FREE PARKING ALL DAY EVERY DAY – DEC. 15 – JAN. 1

Lots of Fun!

[eatdowntownnewark.com](http://eatdowntownnewark.com) [shopdowntownnewark.com](http://shopdowntownnewark.com) [enjoydowntownnewark.com](http://enjoydowntownnewark.com)

Visit us online at [www.newarkpostonline.com](http://www.newarkpostonline.com)