

HISTORIC AMERICAN BUILDINGS  
SURVEY

W. H. ROBINSON HOUSE (1868)  
NEW CASTLE COUNTY, DELAWARE

Prepared by

David L. Ames

and

Bernard L. Herman

College of Urban Affairs and Public Policy  
University of Delaware  
Newark, Delaware

January 1984

HISTORIC AMERICAN BUILDING SURVEY

INDEX TO PHOTOGRAPHS

W. H. Robinson House (1868)  
Southeast of Rtes. 896 and 302,  
Mechanicsville Vicinity,  
White Clay Creek Hundred, New  
Castle County, Delaware  
N-6243, Newark West 7.5.

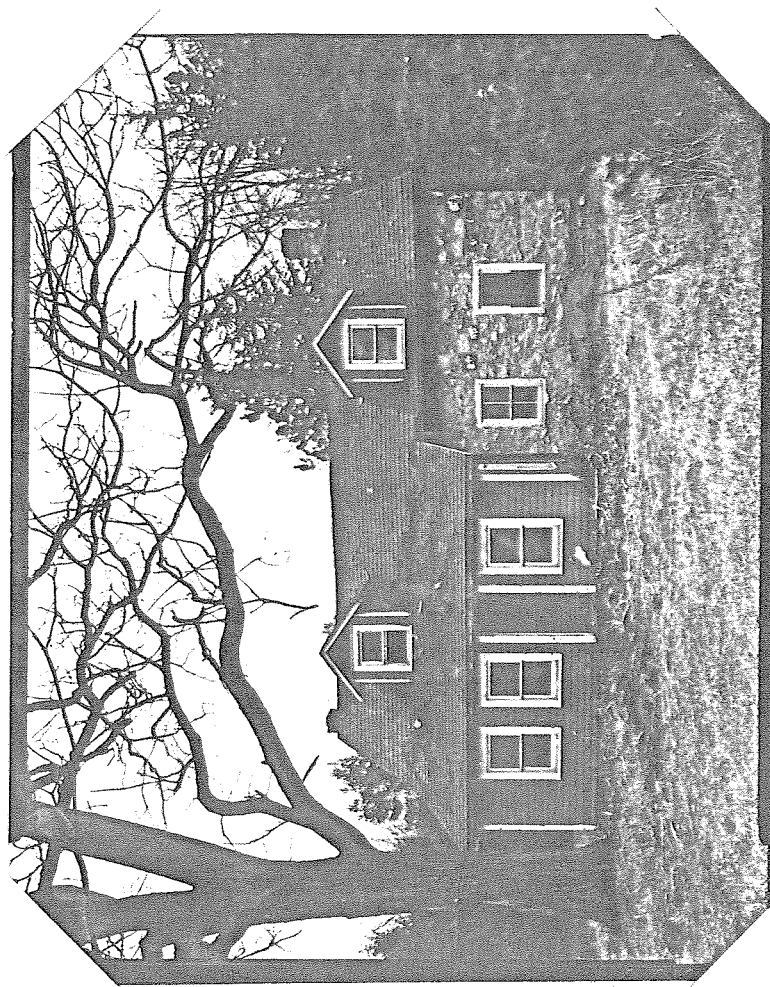
Documentation: 7 Exterior Photographs  
6 Interior Photographs

David Ames, Photographer, December 15, 1983

- DE 2 - 1 NORTH FRONT
- DE 20 - 2 WEST END OF NORTH FRONT
- DE 20 - 3 PERSPECTIVE OF SOUTH & EAST SIDES LOOKING NW,  
PRIMARY EMPHASIS ON EAST SIDE
- DE 20 - 4 PERSPECTIVE OF SOUTH SIDE LOOKING NNW
- DE 20 - 5 DETAIL OF SOUTH WALL
- DE 20 - 6 DETAIL OF SILL LET INTO ROBBLE STONE FOUNDATION  
ON SOUTH WALL LOOKING NORTH
- DE 20 - 7 LOG PORTION OF SOUTH WALL LOOKING NORTH
- DE 20 - 8 FIRST FLOOR LOOKING SW WEST FROM EAST ROOM
- DE 20 - 9 FIRST FLOOR FIREPLACE ON WEST WALL, WEST  
ROOM LOOKING NNW
- DE 20 - 10 SECOND FLOOR, EAST ROOM LOOKING NNW
- DE 20 - 11 SECOND FLOOR, WEST ROOM SOUTH SIDE OF GABLE END WALL
- DE 20 - 12 SECOND FLOOR, WEST ROOM, LOOKING SE
- DE 20 - 13 SECOND FLOOR WEST ROOM, OLD GABLE END WALL

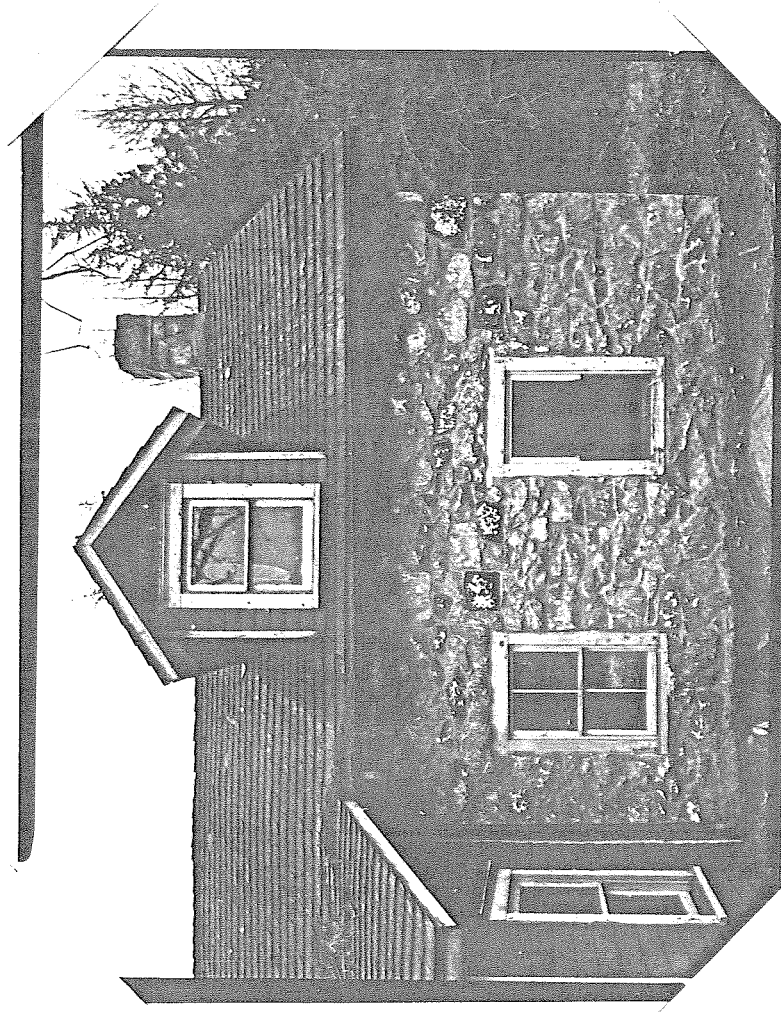
HISTORIC AMERICAN BUILDINGS SURVEY  
SEE INDEX TO PHOTOGRAPHS FOR CAPTION

HABS No.



HISTORIC AMERICAN BUILDINGS SURVEY  
SEE INDEX TO PHOTOGRAPHS FOR CAPTION

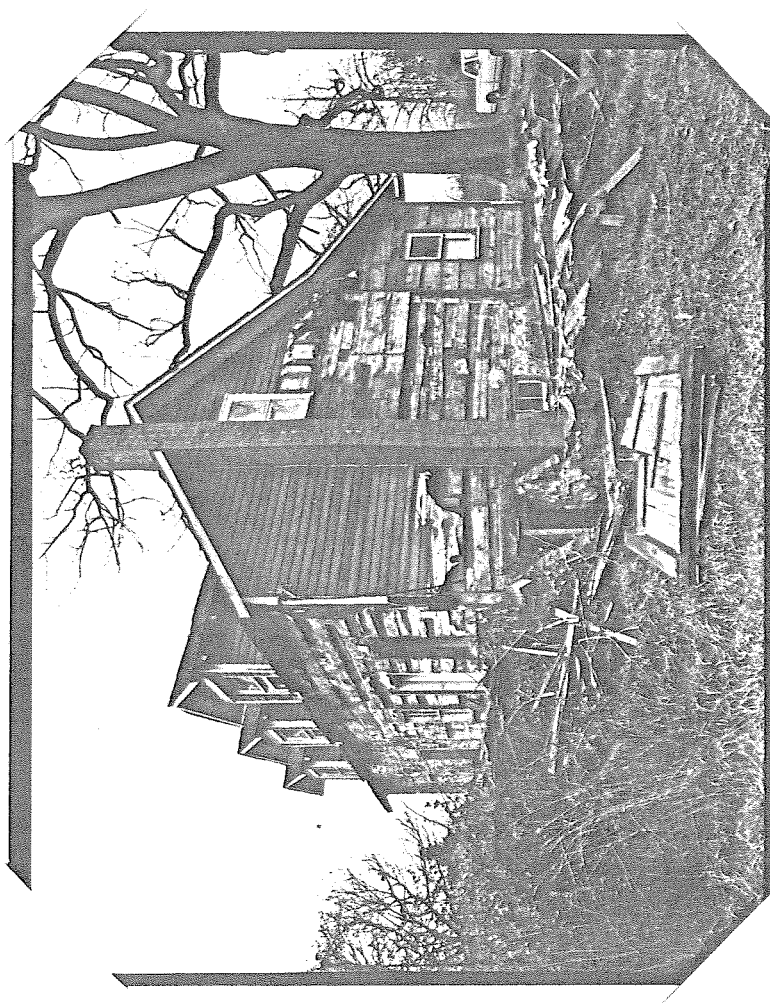
HABS No.



3

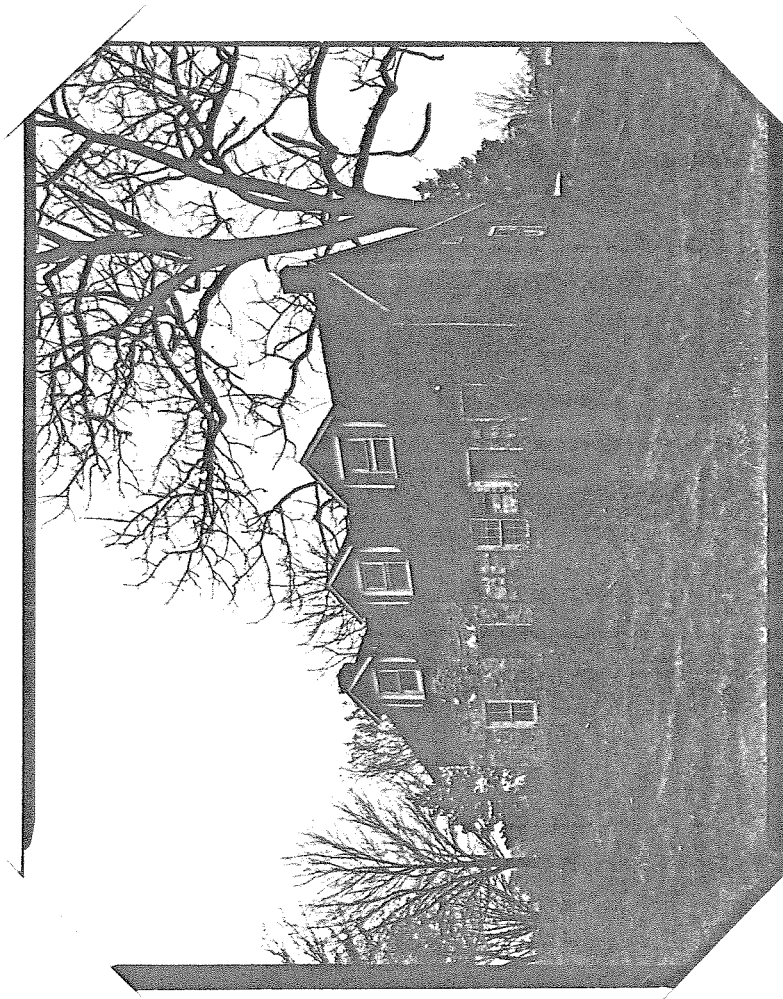
HISTORIC AMERICAN BUILDINGS SURVEY  
SEE INDEX TO PHOTOGRAPHS FOR CAPTION

HABS No.



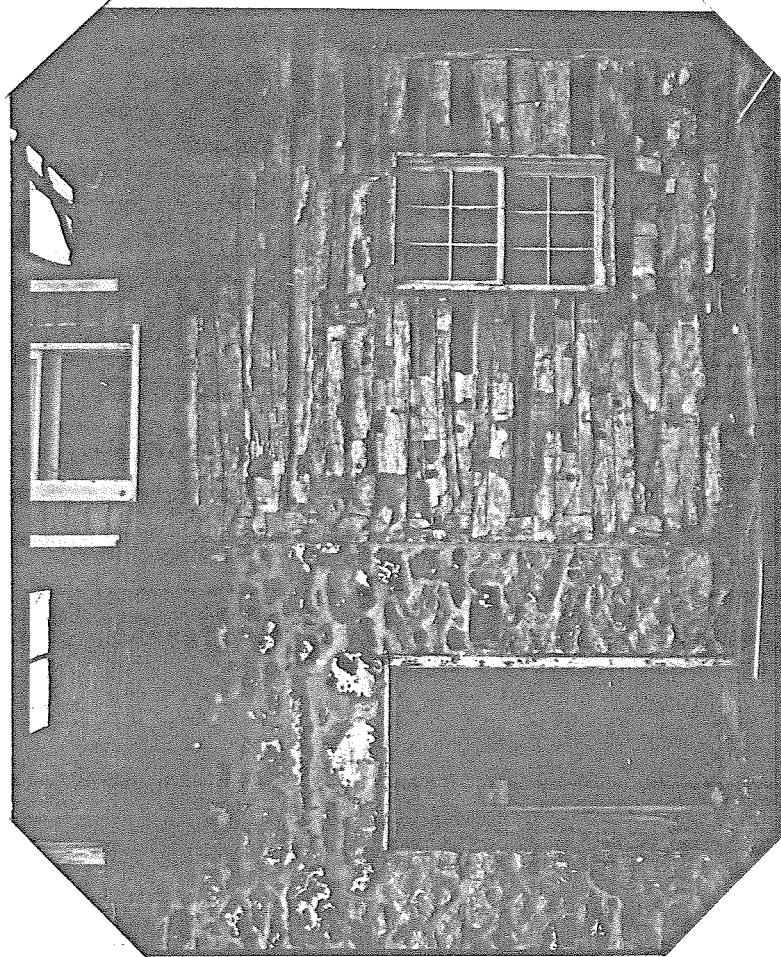
HISTORIC AMERICAN BUILDINGS SURVEY  
SEE INDEX TO PHOTOGRAPHS FOR CAPTION

HABS No.



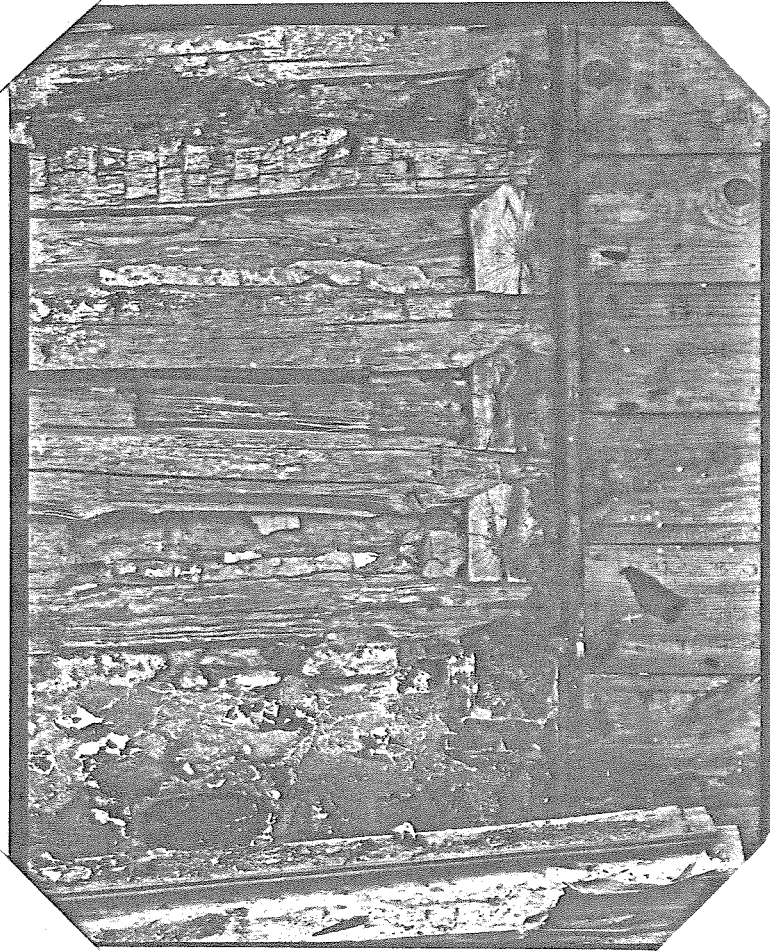
HISTORIC AMERICAN BUILDINGS SURVEY  
SEE INDEX TO PHOTOGRAPHS FOR CAPTION

HABS No.



HISTORIC AMERICAN BUILDINGS SURVEY  
SEE INDEX TO PHOTOGRAPHS FOR CAPTION

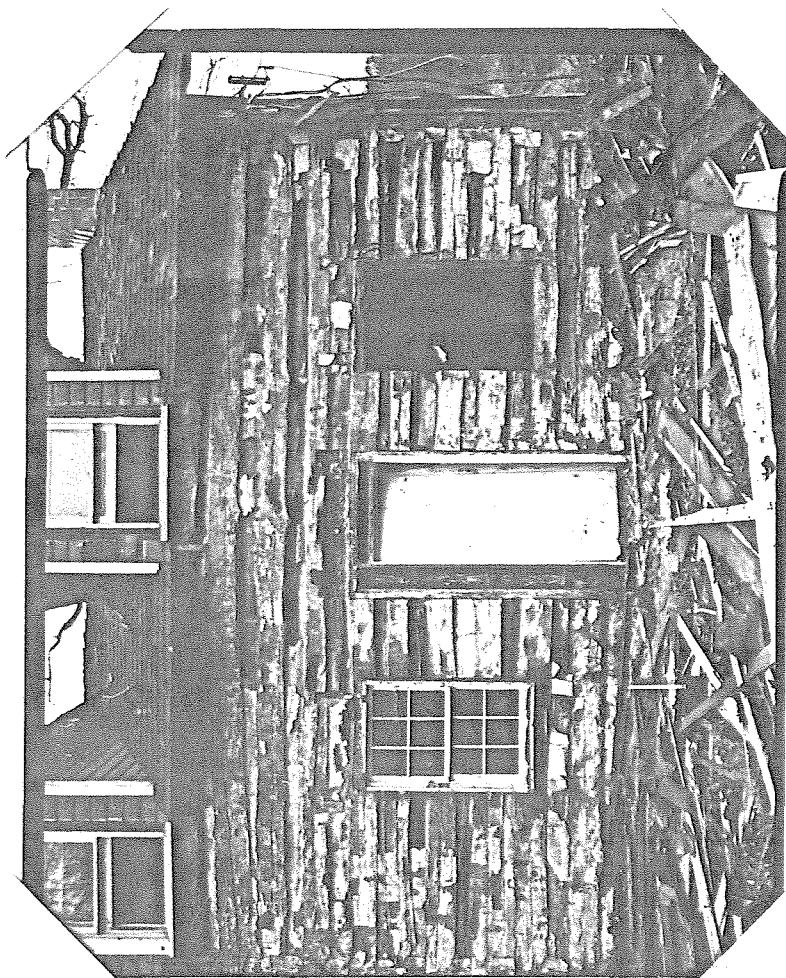
HABS No.





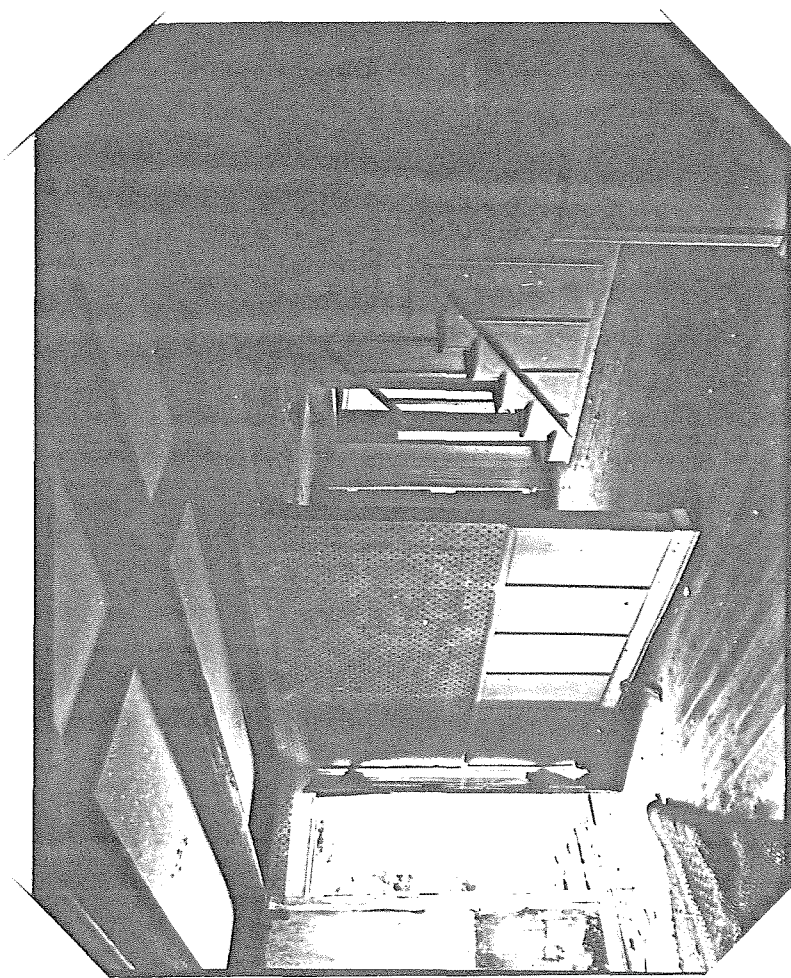
HISTORIC AMERICAN BUILDINGS SURVEY  
SEE INDEX TO PHOTOGRAPHS FOR CAPTION

HABS No.



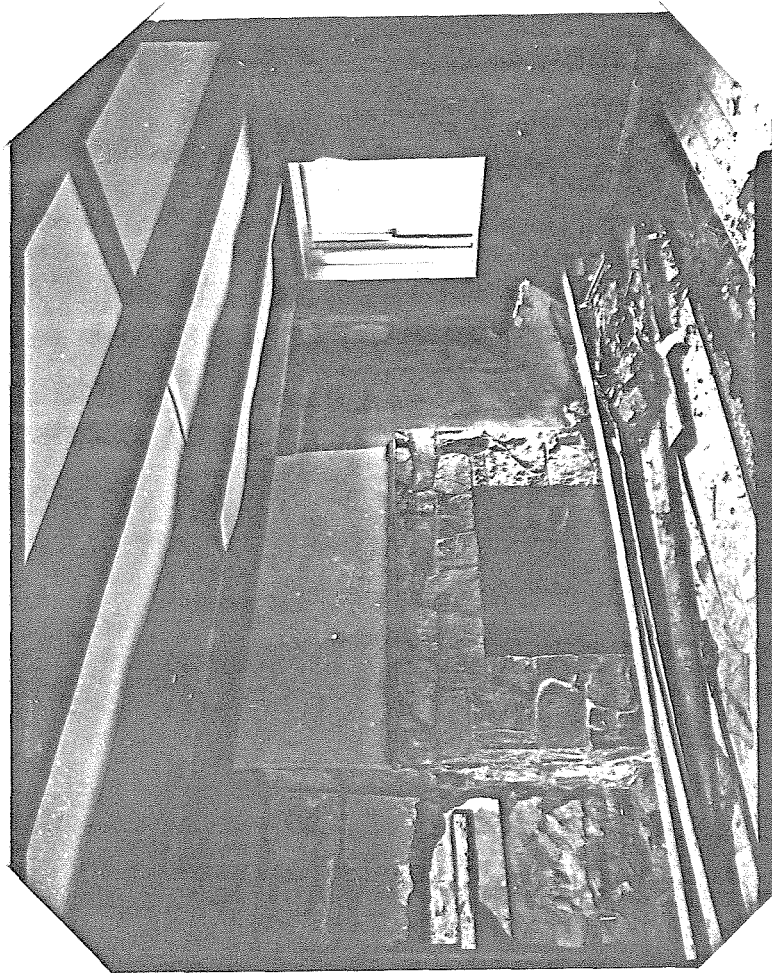
8  
HISTORIC AMERICAN BUILDINGS SURVEY  
SEE INDEX TO PHOTOGRAPHS FOR CAPTION

HABS No.



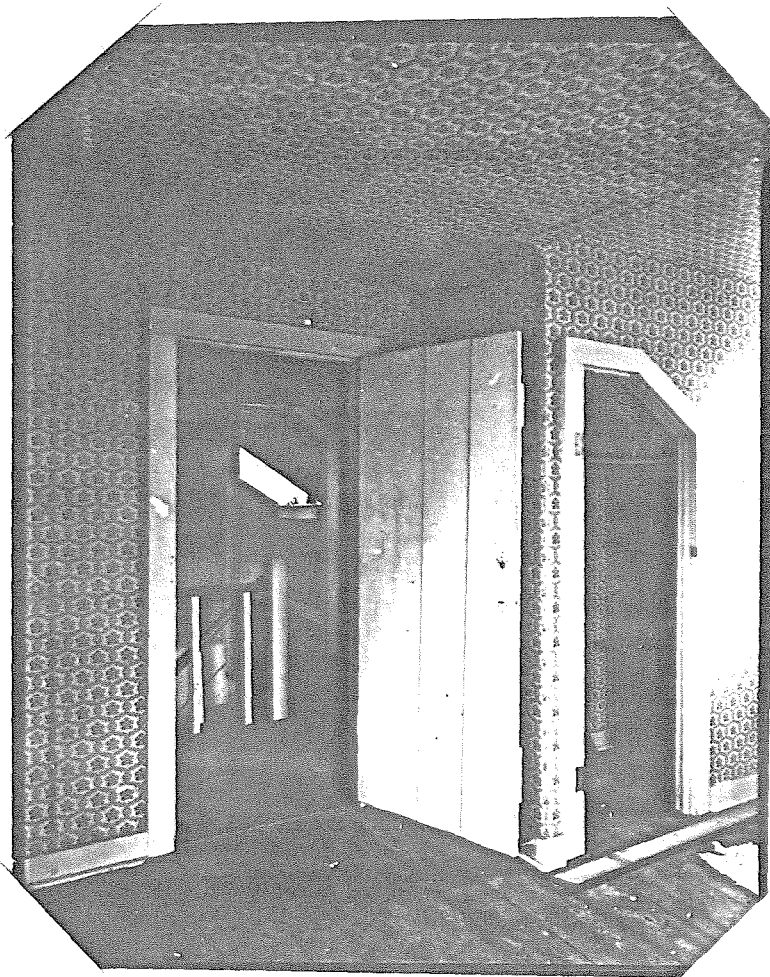
9  
HISTORIC AMERICAN BUILDINGS SURVEY  
SEE INDEX TO PHOTOGRAPHS FOR CAPTION

HABS No.



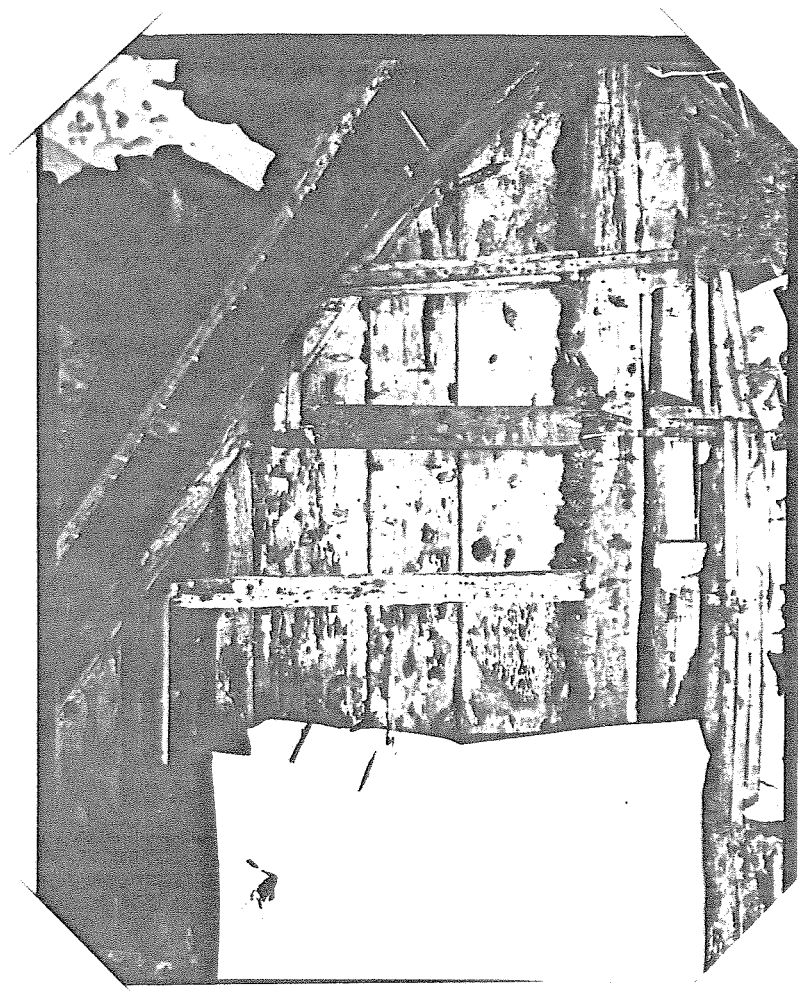
12  
HISTORIC AMERICAN BUILDINGS SURVEY  
SEE INDEX TO PHOTOGRAPHS FOR CAPTION

HABS No.



HISTORIC AMERICAN BUILDINGS SURVEY  
SEE INDEX TO PHOTOGRAPHS FOR CAPTION

HABS No.



HISTORIC AMERICAN BUILDINGS SURVEY  
SEE INDEX TO PHOTOGRAPHS FOR CAPTION

HABS No.

