

Athletics

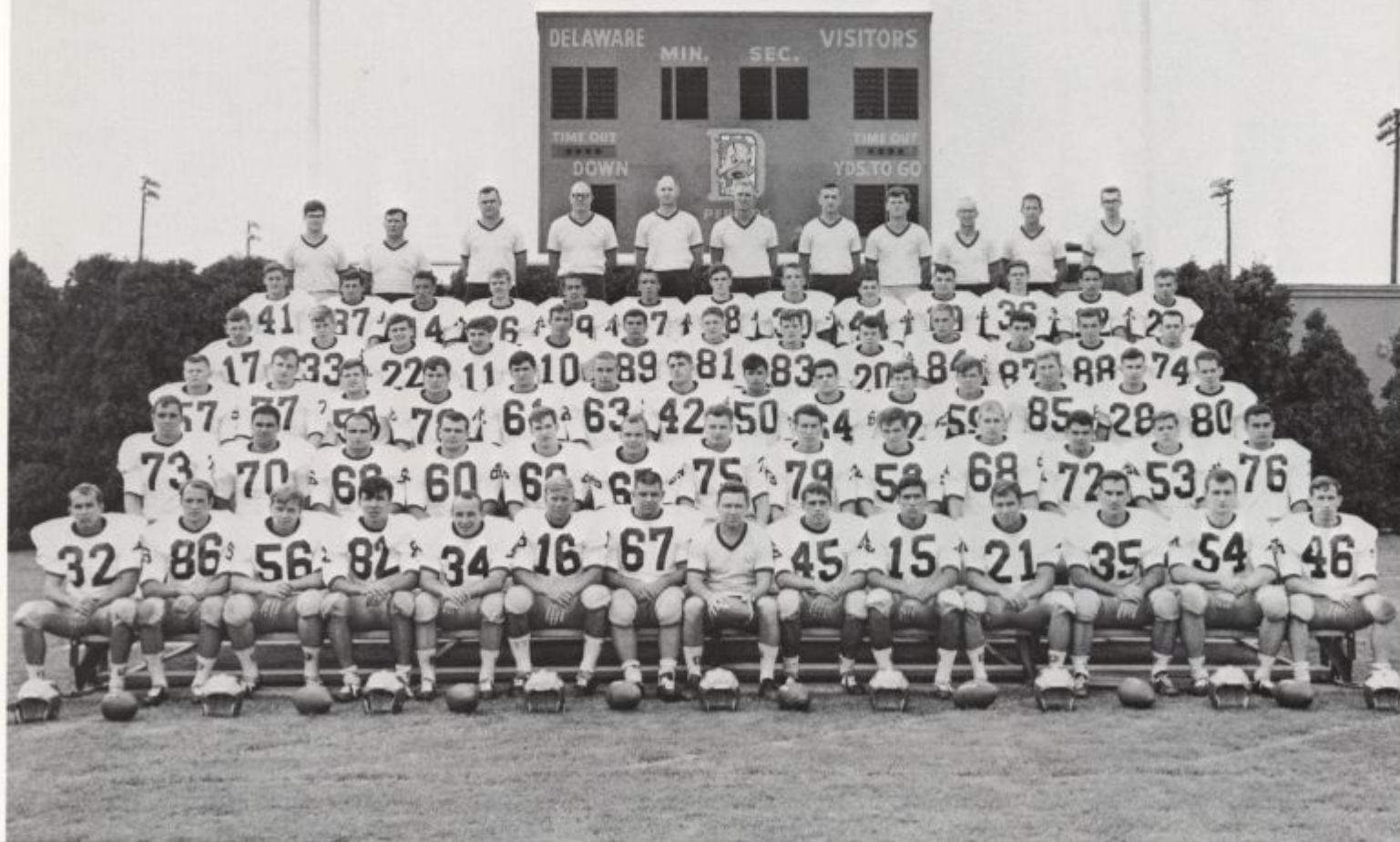




Cheerleaders

First Row: G. Butters, P. Chelly. Second Row: J. Sloan, S. Tollet, M. Schreiber, L. Nertney. Third Row: L. Mitchell, Co-captain; A. Marcial, Co-captain.



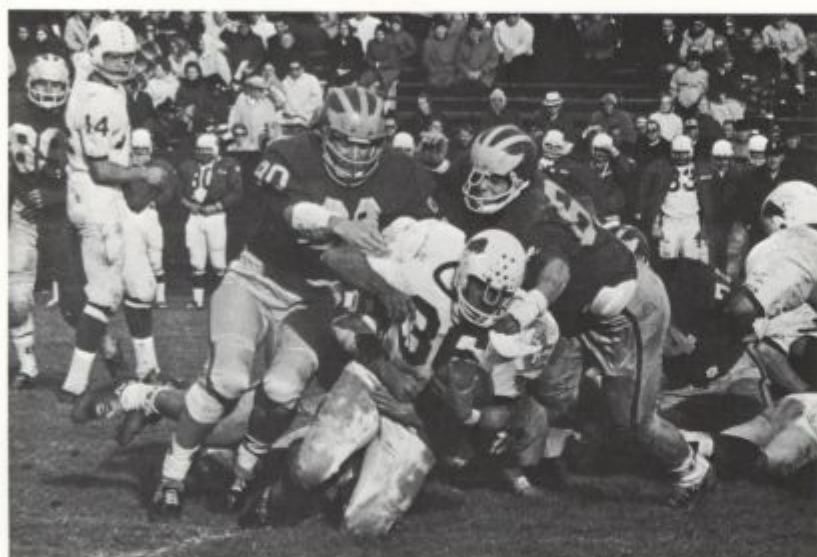


First Row: J. Miller, S. Sloan, M. Wickham, J. Hoey, J. Spangler, G. Shirmer, L. Hackney, T. Raymond, *Head Coach*; A. Smith, *Captain*; F. Linzenbold, M. Guerriero, F. Smith, J. Laser, B. Wright. *Second Row:* S. Campbell, C. Vaccarino, A. Avignone, B. Novotny, J. Smith, J. Albertson, J. Ruch, C. DeRubeis, J. Holloway, D. Dyer, J. Hackney, S. Gratzinger, P. Huffman. *Third Row:* M. Kwiatkowski, W. Spisso, F. Bach, P. Cornelius, B. Laughlin, H. Vollendorf, J. Baumann, E. Casper, J. Favero, D. Klinger, P. Camp, S. Schambach, J. Redden, J. Scelba. *Fourth Row:* E. Martnick, B. Hanley, J. Sylvanus, C. Infante, J. Lippincott, J. Purzycki, R. Withelder, J. Crabb, T. Milburn, B. Lieberwirth, M. Lipson, T. Puker, G. Matyger. *Fifth Row:* G. Helker, L. Emmons, J. Stopyra, D. Brumbach, B. Masin, J. Fulop, J. Lazarski, C. McCallion, S. Brickley, T. DiMuzio, D. Keller, C. Spicer, J. Tracey. *Sixth Row:* T. Runnels, *Manager*; J. Flynn, *Backfield Coach*; P. Billy, *Freshman Coach*; E. Maley, *Line Coach*; I. Wisniewski, *End Coach*; M. Heinecken, *Backfield Coach*; D. Harnum, *End Coach*; B. Luby, *Graduate Assistant*; R. Rylander, *Trainer*; D. Leach, *Assistant Trainer*; R. Pierce, *Manager*.

Football



G. Butters, J. Lippincott.



Coach Raymond



At the start of the football season, most of the area sports writers predicted a 7-2 record for the Delaware Blue Hens. That prediction was correct, but the numerals were reversed! It was slated to be a rebuilding year, for much new talent was available. Many excellent sophomores and juniors demonstrated great promise in filling slots vacated by graduated seniors.

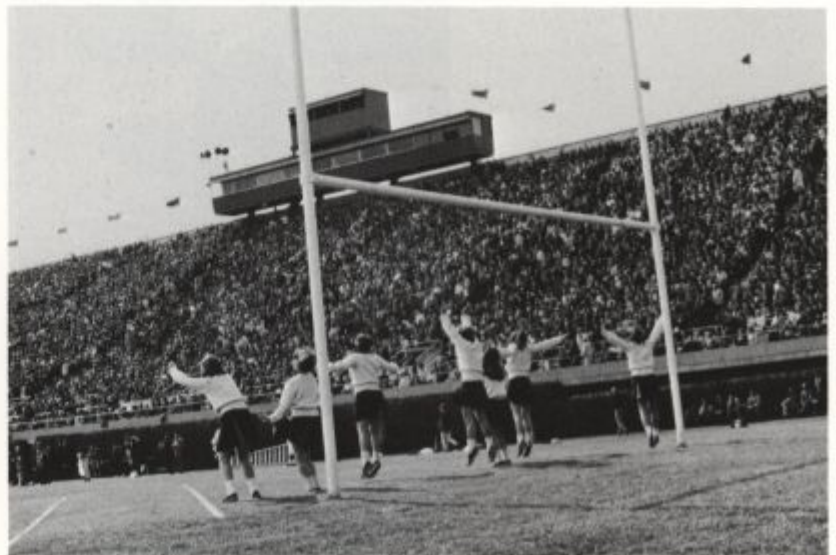
With captain Art Smith leading the defense and senior quarterback Frank Linzenbold commanding the offense, head coach Tubby Raymond's Hens opened the fall season against Rhode Island at Delaware Stadium on Saturday afternoon, September 22. Although billed as the "Mini-Bowl," both teams played as if the NFL championship were at stake. The Rams rallied for 14 points late in the fourth quarter to defeat the Hens, 28-17.

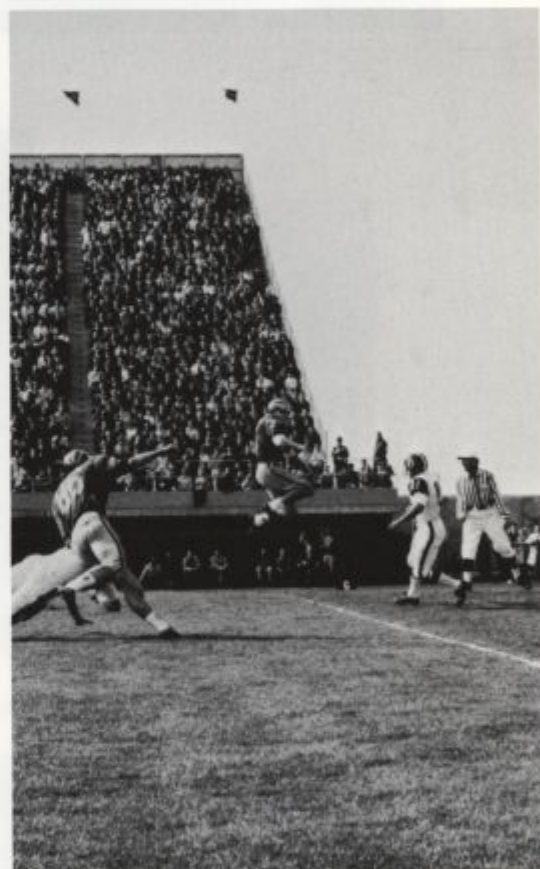
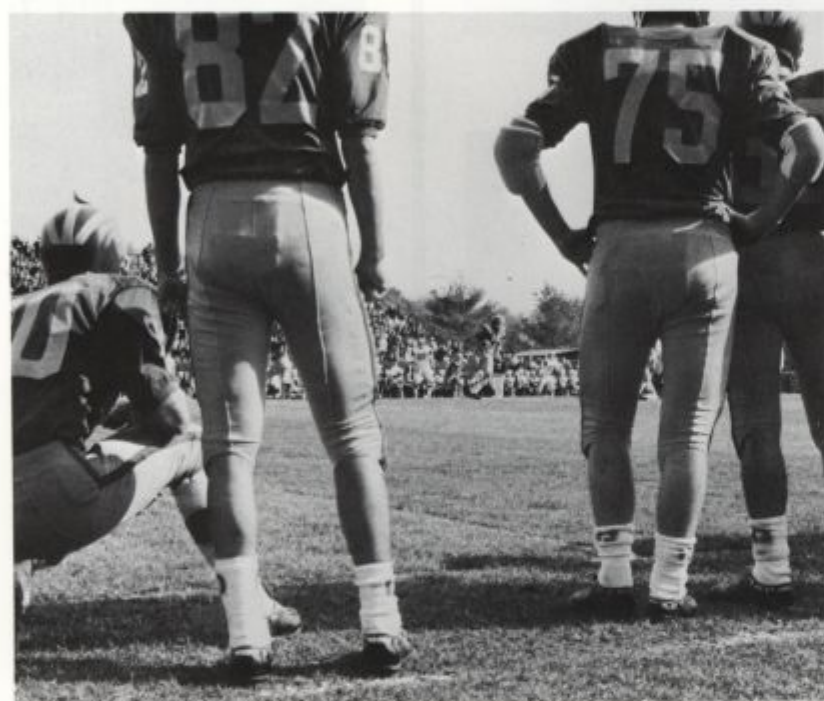
After losses to Villanova, Hofstra, and Rutgers, Delaware gained its first victory and Middle Atlantic Conference win by rolling over Lafayette, 21-2, at the Leopard's homecoming in Easton, Pennsylvania. The next weekend Delaware returned to Newark for its homecoming clash with the powerful Temple Owls. At halftime the Delaware fans were optimistic with the Hens ahead 17-0. Temple dominated the second half however, and the final score read Temple 26, Delaware 17.

After a loss to Buffalo, Delaware scored its second win of the 1967 season. The Blue Hens swamped the Lehigh Engineers, 33-10, with Delaware's defense sparkling throughout the game. Defensive men Art Smith, Paul Camp, and Bill Laughlin exhibited excellent performances.

Twelve Delaware seniors played in their last game at Lewisburg, Pennsylvania, on Saturday afternoon, November 18. The Hens were defeated despite the fact that they fought gallantly and the season ended with a 35-6 loss.

Although coach Raymond has lost many excellent players such as leading ground gainer Brian Wright, fullback John Spangler, captain Art Smith, and quarterback Frank Linzenbold, others will fill their shoes in 1968. Many outstanding prospects from the undefeated Freshman team will be available next year. With varsity first-stringers Tom DiMuzio, Jim Crabb, Hank Vollendorf, Bob Novotny, and Scott Campbell returning next fall, the Blue Hens should ensure a victorious 1968 season.





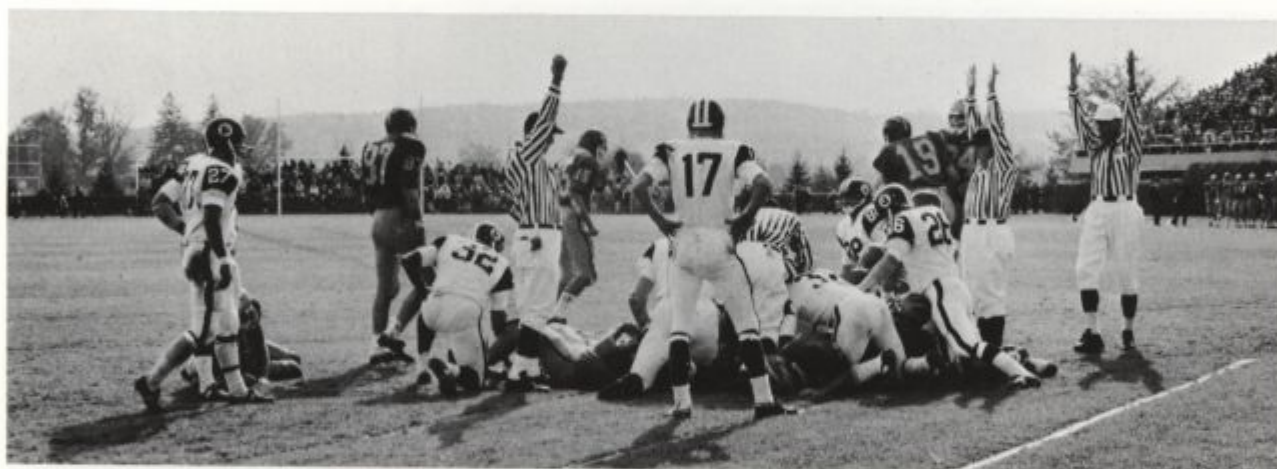
RHODE ISLAND	28-27	L
VILLANOVA	21-13	L
HOFSTRA	33-31	L
RUTGERS	29-21	L
LAFAYETTE	21- 2	W
TEMPLE	26-17	L
BUFFALO	38-19	L
LEHIGH	33-10	W
BUCKNELL	35- 6	L

2 WINS—7 LOSSES



B. Laughlin





B. Laughlin

B. Wright

T. DiMuzio





F. Linzenbold, Coach Raymond.



P. Cornelius





First Row: H. Kirk, R. Morley, K. Brough, T. MacKnight, D. Meadows, Co-Captain; L. Kline, Coach; N. Knarr, Co-Captain; K. Morley, M. Samonisky, A. Boyce, J. Kaffenberger. Second Row: R. Morillo-Soto, J. Berg, M. McBride, T. McBride, G. Wichmann, B. Leedom, J. Dusewicz, C. Rogers, E. Searl, N. Biasotto, D. Goodale. Not Shown: G. Leedom.

Soccer

The University of Delaware Soccer Team again had a winning season. With a well-balanced team, Coach Loren Kline, a former soccer All-American from Penn State, and his booters compiled a 6-4-2 log. Juniors Roger Morley and George Leedom were chosen for the All-M.A.C. soccer team, and Senior Co-Captain Dave Meadows received an Honorable Mention rating.

One highlight of the 1967 season was the Blue Hens' 6-3 defeat of Lehigh. This marked the university's first soccer victory over Lehigh in fifteen years. Strong clutch performances were evident throughout the season as Delaware rallied in the closing minutes of several games to post victories. The Blue Hens also played one of the East's best soccer teams, Temple, but lost 3-0.

1968 should be an even better season, since Coach Kline will lose only two seniors through graduation, Dave Meadows, and Tommy MacKnight.

WASHINGTON	3-1	L
LAFAYETTE	3-0	W
JOHNS HOPKINS	2-1	L
LEHIGH	6-3	W
GETTYSBURG	0-0	T
URSINUS	2-0	W
FRANKLIN AND MARSHALL	5-0	W
DREXEL	1-1	T
PMC COLLEGES	3-0	W
TEMPLE	3-0	L
LASALLE	3-1	W
BUCKNELL	3-2	L

6 WINS—4 LOSSES—2 TIES



E. Searl



First Row: E. Schwartz, S. Ludlow, J. Smith, R. Purvis. Second Row: G. Hagan, R. Poulson, L. Pratt, Coach; R. Green, Manager; J. Smith, B. Harrington, R. Woerner, R. Clunie, Captain.

Cross Country

R. Poulson



Coach Larry Pratt's harriers established an all-time high for the 1967 cross country season. The Blue Hens finished with a 10-0 record to become the most successful cross country team in university history.

Led by Captain Bob Clunie, the Smith brothers, Jimmy and Jerry, Brian Harrington, Gary Hagan, and Bob Woerner, the Blue Hens handed impressive defeats to such strong Middle Atlantic Conference foes as Temple and St. Joseph's. An outstanding individual competitor was lacking, however, as Delaware finished sixth in the Middle Atlantic Conference championship. Strong performances by all team members in the dual meets, though, enabled the Delaware team to record the university's fifth undefeated cross country season.

The 1968 season looks promising for Coach Pratt since most of the harriers will return next year to continue the Blue Hens' cross country winning streak.

LAFAYETTE	39-20	W
LEHIGH	36-21	W
FAIRLEIGH-DICKINSON	50-15	W
TEMPLE	32-25	W
SWARTHMORE	40-15	W
ST. JOSEPH'S	33-25	W
AMERICAN	40-20	W
LASALLE	32-23	W
TOWSON	44-15	W
GETTYSBURG	42-20	W

10 WINS—0 LOSSES

6th—M.A.C. CHAMPIONSHIPS

6th—IC4A CHAMPIONSHIPS



R. Poulson

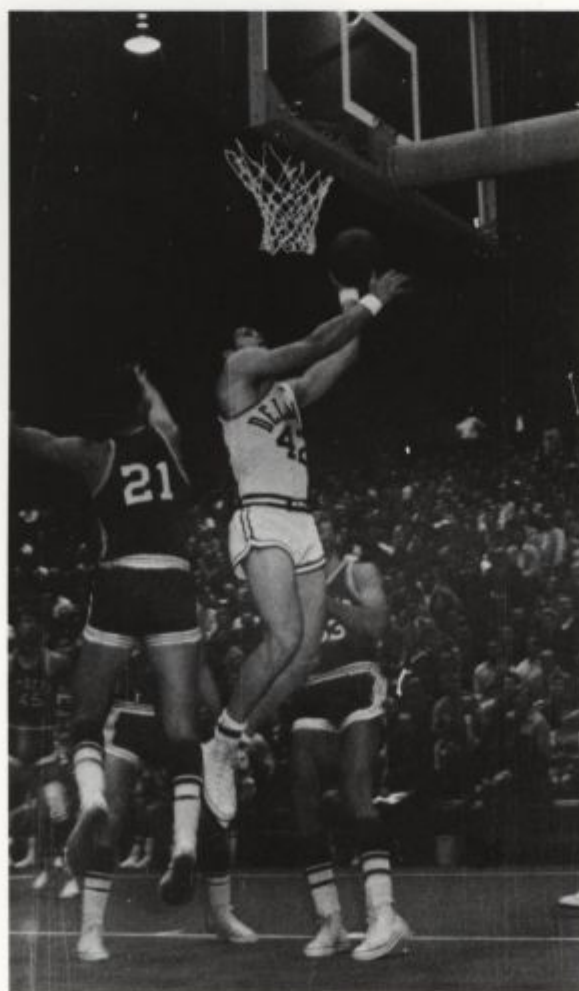


E. Schwartz



First Row: V. Orth, W. Cloud, K. Barnett, C. Parnell, Co-Captain; M. Wagaman, Co-Captain; B. Beatty, B. Trumbower, R. Wright. Second Row: D. Peterson, Head Coach; J. Couch, L. Pratt, S. Jackson, J. McMillen, E. Roth, D. Merchant, B. Young, J. Mowday, T. Crary, Assistant Coach.

Basketball



Inspired by the leadership of co-captains Mark Wagaman and Charlie Parnell, the Delaware basketball team finished with a successful 16-7 record. The team was compiled of experienced seniors and talented sophomores. The seniors provided the experience and skills necessary, while the sophomores gave Coach Peterson a strong bench for the extra punch that is necessary for any winning team.

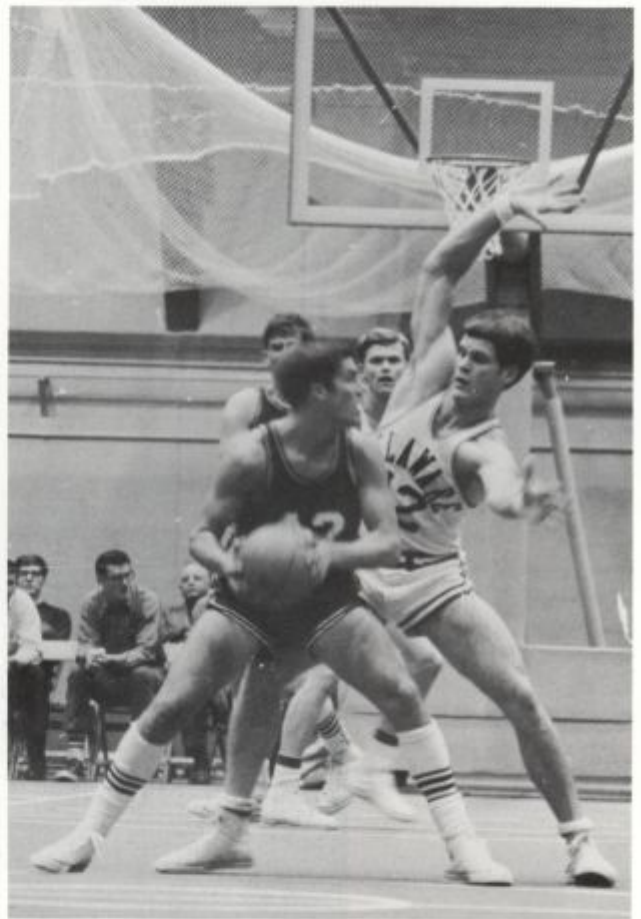
The team was well rounded. It had strong rebounders in Mark Wagaman and Ken Barnett; high scorers with Charlie Parnell, Ken Barnett, Mark Wagaman, and Loren Pratt; while Walt Cloud, Vic Orth, and Jim Couch strengthened the defense.

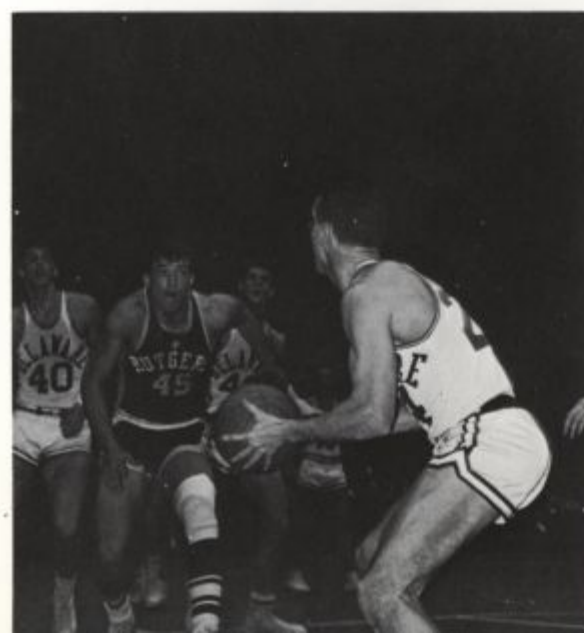
The highlight of the season was defeating the University of Pennsylvania, which had been expected to be one of the roughest games of the season. This one great upset, however, was offset by losses to Rutgers and Temple. Probably the darkest moment of the season arrived when Delaware lost the final game of the Pocono Mountain Classic to East Stroudsburg.

Coach Dan Peterson, who has never had a losing season at Delaware, has again developed a winning ball team. Next year's team should fulfill the optimistic expectations of Blue Hen fans, for Peterson has four fine sophomores (Jim Couch, Loren Pratt, Ed Roth, and Steve Jackson) and a successful freshman team to form the nucleus of his 1968-69 team.

LAFAYETTE	99-82	W
BUCKNELL	82-79	W
LEHIGH	66-54	W
PENN	80-68	W
PMC	98-56	W
RUTGERS	103-84	L
WEST CHESTER	95-59	W
C. W. POST	91-75	W
EAST STROUDSBURG	85-78	L
DREXEL	67-56	W
LAFAYETTE	83-62	W
LEHIGH	97-68	W
HOFSTRA	90-74	L
DREXEL	94-77	W
GETTYSBURG	90-78	W
BUCKNELL	88-87	L
TEMPLE	76-63	L
RUTGERS	84-80	L
GLASSBORO	121-87	W
F. & M.	55-54	L
GETTYSBURG	91-71	W
SUSQUEHANNA	113-95	W
ALBRIGHT	74-58	W

16 WINS—7 LOSSES







First Row: B. Moore, B. Locke, Captain. Second Row: P. Banker, D. Hagerty, G. Wilson, T. Alloway. Third Row: K. Carmine, D. Bent, D. Knox, K. Schwartz, G. Coleman, R. Wilson, F. McKee, Manager. Fourth Row: H. Rawstrom, Coach; B. Young, J. Roy, B. Guerke, R. Burich.

Swimming



H. Rawstrom, Coach



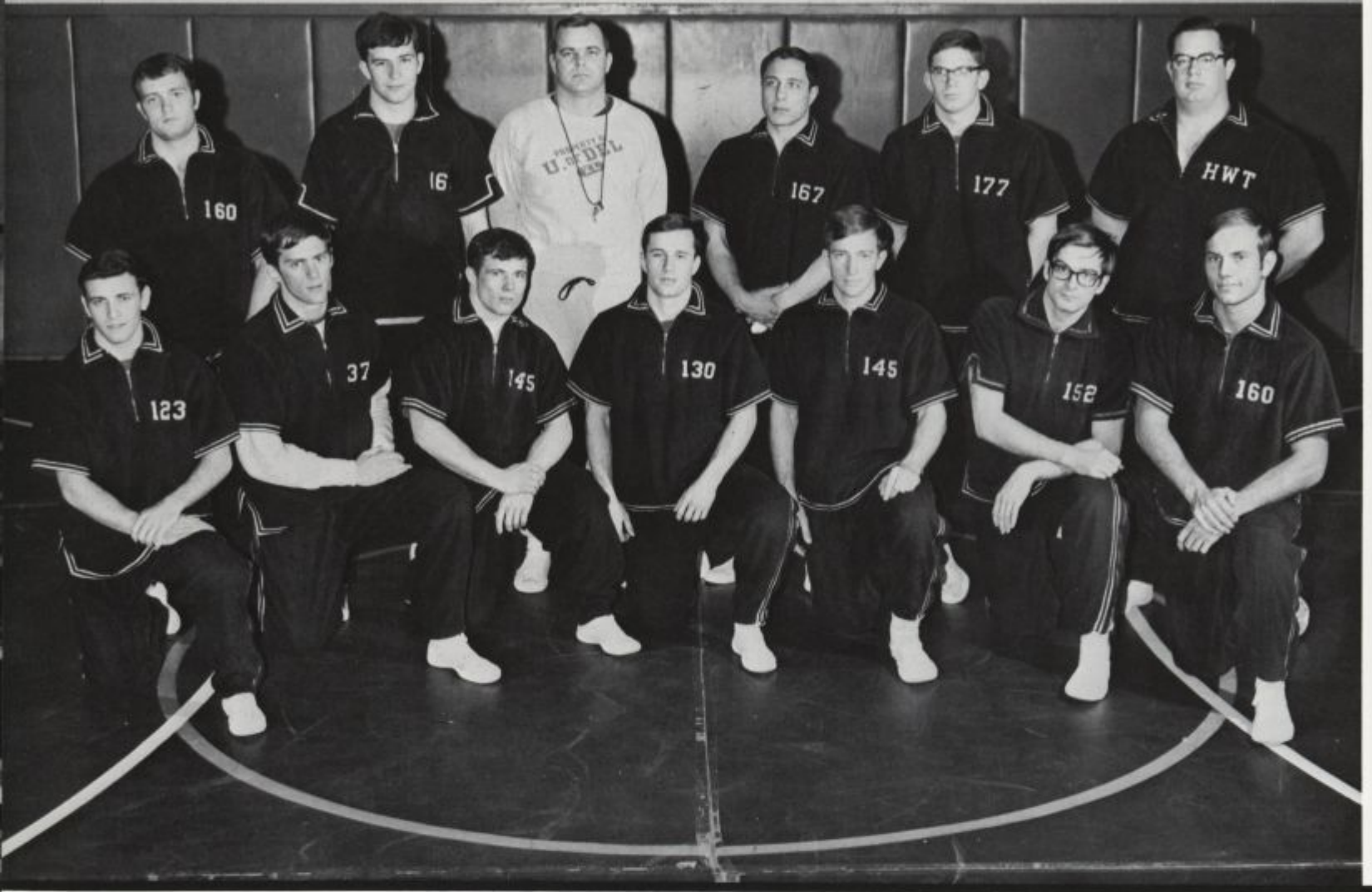
Though hampered by academic ineligibilities and illnesses, the Blue Hen swimmers compiled a successful 7-5 record. Senior Captain Bob Locke, Juniors Dave Bent and Rich Wilson, and Sophmores Barry Guerke and Drew Hagerty were outstanding in the swimming events, while Junior James Roy continued to be nearly unbeatable in the diving competition.

Individual performances of the 1967-1968 season can be summed up in two words—Bob Locke. The Hen captain proved to be the backbone of the Delaware Mermen as he consistently turned in excellent performances. Perhaps his most stellar feat came in the Bucknell dual meet when he finished second in the 200 Yard Freestyle with an impressive time of 1:55.0.

The swimmers bid good-bye to old Taylor Pool with an undefeated record of six wins at home. New swimming and diving facilities will be available next season to Coach Harry Rawstrom and the Blue Hens. Added support from the past season's tremendous Freshman team, coached by the former Blue Hen swimming sensation, Edgar Johnson, should give Delaware an excellent chance to complete another winning season.

FRANKLIN & MARSHALL	53-42	W
PHILADELPHIA TEXTILE	77-22	W
ST. JOSEPH'S	63-41	W
BUCKNELL	71-33	L
LEHIGH	60-44	L
TEMPLE	68-36	L
LAFAYETTE	60-44	L
JOHNS HOPKINS	62-32	W
DREXEL	57-37	W
GETTYSBURG	59-35	W
SWARTHMORE	74-20	W
MONMOUTH	61-42	W

7 WINS—5 LOSSES



First Row: R. Van Gorder, J. Wilkinson, B. Harcum, D. Rathmell, J. Burns, P. Krape, Captain; T. Peters. Second Row: L. Hopkins, J. Redden, P. Billy, Coach; F. Cortese, R. Perkins, M. Weikart.

Wrestling

The Blue Hen wrestling team posted a 6-7 record over the season. Several of the losses, however, were by very slim margins, and can probably be accounted for by numerous injuries to the team.

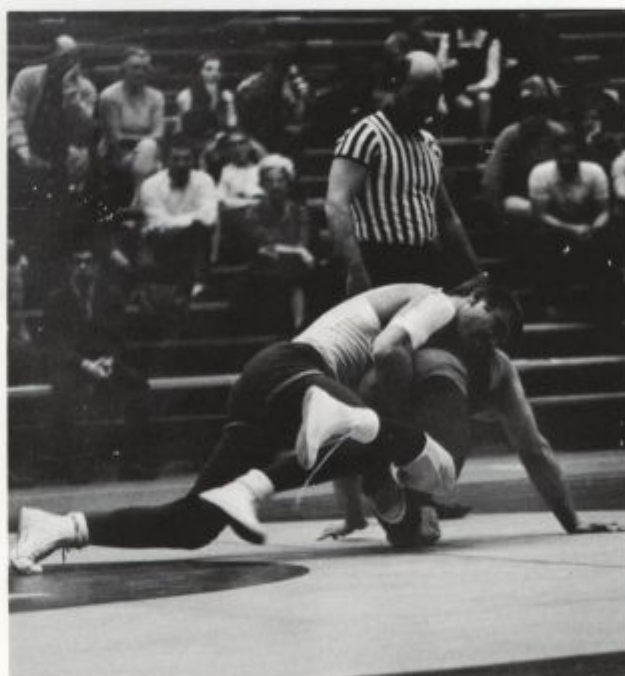
Although Delaware placed sixth in the MAC-championships, Marty Weikart won the heavyweight title. Doug Swift and Rowan Perkins won preliminary matches, but were eliminated in succeeding contests.

Marty Weikart, the most outstanding wrestler of the team, won twelve matches and lost only one. In nine of his twelve victories, he pinned his opponent.

Next season's team should be a much finer unit. Losing only captain Peter Krape, and drawing from a freshman team with a record of 7-1, the Delaware Matmen should have a bright future.

MONMOUTH	19-13	W
LYCOMING	24- 5	L
GLASSBORO	19-16	L
BUCKNELL	20- 8	L
URSINUS	28- 8	W
SWARTHMORE	17-13	L
TEMPLE	30- 3	L
JOHNS HOPKINS	27- 8	W
ALBRIGHT	27- 6	W
DREXEL	19-12	L
GETTYSBURG	18-16	W
LAFAYETTE	25- 8	L
PMC	29- 8	W

6 WINS—7 LOSSES





First Row: R. Walton, W. Smith, S. Brickley, J. Smith, J. Smith, R. Clunie, J. Flynn, Coach; L. Pratt, Asst. Coach; J. West, W. Taylor, R. Wiedmann, J. Foster, B. Green. Second Row: D. Fantine, W. Wheeler, G. Youlden, E. Schwartz, P. Heal, P. Walker, S. Campbell, R. Johnson, B. Harrington, F. Gordy, R. Woerner, C. Donnelley, G. Hagan, R. Callaway.

Winter Track



After a very disappointing inaugural indoor track season last year, Coach Jimmy Flynn's charges bounced back in winning form this season.

In fact, one could say that the Blue Hen must definitely be a first cousin of the famous "Roadrunner." The sophomore newcomer Frank Gordy was especially fast as can be evidenced by his record blistering 1:10.9 clocking in the 600-Yard Run. Frank also proved to be an ardent competitor in the long jump. Co-Captain Bob Clunie and senior Brian Harrington were once again nothing but tremendous in the distance events. Clunie and Harrington hold Delaware records in the one mile and two mile runs, respectively. Strong individual performances were also registered by Jimmy Smith in the 1000-Yard Run and Bill Foster in the 60-Yard Dash. Delaware's mile relay team of Frank Gordy, Bob Johnson, Jimmy Smith, and Chick Donnelly proved to be a sensational one, as it broke the old record by 7.6 seconds in the Second Annual Delaware Invitational Track Meet.

Now that the season is over, Delaware track fans should place their orders early for next season's indoor track spectacular. It promises to be a great one, for the prospects are fast and flashy. In fact, it looks as though the "Roadrunner" will definitely become a slow second cousin to the famous Delaware Blue Hen.



DELAWARE 63, WEST CHESTER 46
 DELAWARE 87, LEHIGH 21
 PENN STATE 68, PITT 21, DELAWARE 19
 DELAWARE 72, URSINUS 36, PMC 17, ALBRIGHT 11
 PENN 69, DELAWARE 40
 DELAWARE 70, TOWSON STATE 34

W
 W
 L
 W
 L
 W

4 WINS—2 LOSSES



First Row: L. Markum, M. Goeller, D. Fantine, G. Hagan, R. Johnson, E. Swartz, B. Harrington, N. Mayberry. *Second Row:* R. Green, *Manager*; C. Donnelly, C. Hansen, R. Poulson, W. Taylor, J. Flynn, *Coach*; J. O'Donnell, *Captain*; L. Pratt, *Coach*; J. Smith, J. Smith, R. Suro. *Third Row:* J. Mahler, B. Wells, G. Smith, W. Wheeler, R. Wodjewodzi, J. Miller, D. Lukoff, S. Campbell, P. Heal, M. Carroll, R. Clunie, R. Young.

Summer Track 1967



J. O'Donnell



B. Harrington

Placing fifth in the M.A.C. Championships, the 1967 Track Team completed a successful season with a record of 6-2. Top scorer for the team was Neil Mayberry, who scored 57¼ points. He also set the school record for the 100-Yard Dash with a time of 9.9 seconds, as well as running the 880-Yard Dash, the 2-Mile Run, and set a new school record in the 1-Mile Run. Co-captain Scott Campbell was the team Shot Putter. Other top men include Roger Soro, High Hurdles; Bill Wheeler, Discus; and Bob Clunie, who came within ½ second of the school records for the 1 and 2 Mile Runs. The Relay Teams also presented fine performances to assist the Blue Hens in achieving their winning season.

LEHIGH	98-41	W
LASALLE	101-39	W
TEMPLE	72-68	L
AMERICAN	113-25	W
GETTYSBURG	82-58	W
BUCKNELL	99-40	W
ST. JOSEPH'S	81-50	L
LAFAYETTE	50-42	W

6 WINS—2 LOSSES
5th—M.A.C. CHAMPIONSHIPS



J. Mahler

S. Campbell



T. Kearns



R. Jeragen, J. Smith.



B. Shiply



G. Smith





First Row: E. Pankowski, M. McGunchey, W. Steacker, Captain; L. Kline, Coach; R. Hannah, Coach; T. Van Grofski, M. Dill, A. Whiteman, G. Paulsen. Second Row: W. Cattell, T. Palmer, S. Tissot, E. Stephan, F. Monticello, W. Holmes, V. Orth, A. Smith. Third Row: A. Streltzov, R. Maxer, W. Evans, C. Pesce, Captain Elect; L. Fischer, R. Hale, D. Cathcart.

Baseball 1967

Led by captain Bill Steaker, pitcher Tom Palmer, and Chuck Pesce, the Baseball Team finished the season with an overall record of 10-9 and fifth place in the Middle Atlantic Conference. Several individuals provided outstanding performances. Chuck Pesce led the team in batting with an average of .425, second in the M.A.C. He was also the catcher on the first team of the conference. Also wielding bats were left fielder Wayne Evans (.400) and Dave "Rabbit" Kutgart who hit nearly .300. The top pitchers were Tom Palmer who pitched in 75% of the games and Steve Tissot who struck out an average of 10 men per game. Bill Steaker, who was injured for 7 games, was named the most valuable player on the team.



L. Fischer

GLASSBORO	4-0	L
MONMOUTH	4-2	W
PHILADELPHIA TEXTILE	7-4	L
HOFSTRA*	6-2	W
ELON	3-2	W
WAKE FOREST	10-3	L
NORTH CAROLINA	3-1	L
WILLIAM AND MARY	9-6	W
HAMPTON INSTITUTE	6-4	W
GEORGETOWN	10-8	W
SWARTHMORE	4-3	L
LEHIGH*	13-6	W
ST. JOSEPH'S*	2-1	L
TEMPLE*	7-4	L
URSINUS	8-7	W
LAFAYETTE*	4-0	W
SETON HALL	7-6	W
BUCKNELL*	4-3	L
PENN STATE	8-1	L

10 WINS—9 LOSSES

*MIDDLE ATLANTIC
CONFERENCE UNIVERSITY
DIVISION GAME

5th—M.A.C. 3 WINS—3 LOSSES



R. Hannah, A. Whiteman, L. DeGeorgia.



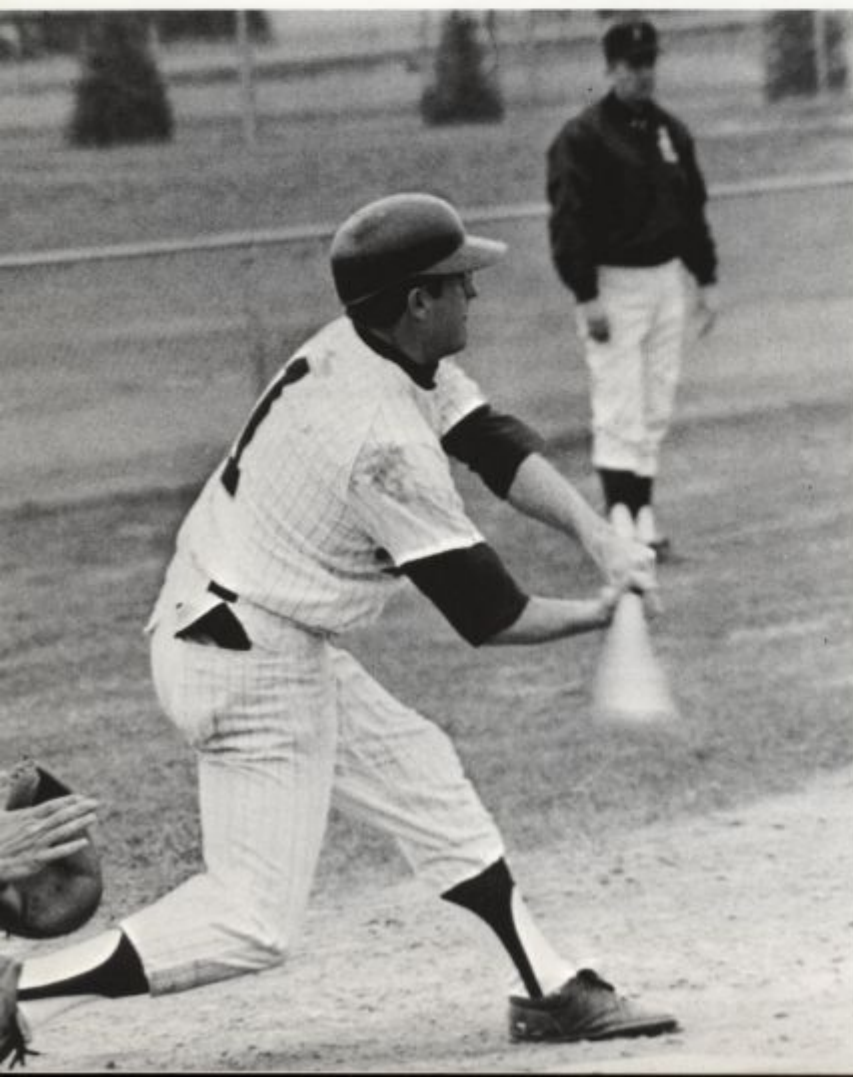


T. Palmer, C. Pesce.



B. Steacker

T. Palmer



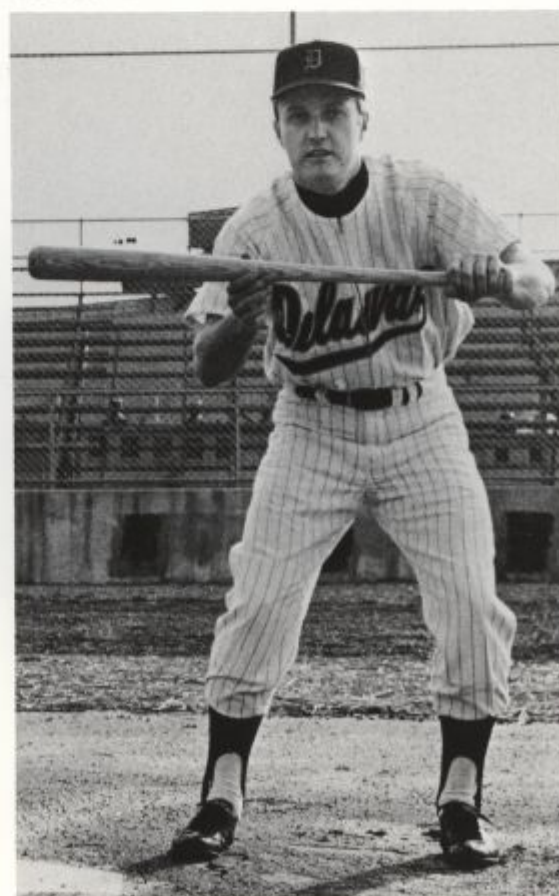


A. Heck



C. Pesce, A. Whiteman.

B. Steacker





First Row: D. Johnson, *Manager*; B. Vosburgh, S. Rash, J. Wright, A. Wise, J. Huggins, B. Dunaway, A. Rose, M. Mekalian, L. VonKleeck, J. Nutter, B. Roth. *Second Row:* C. Vaughn, C. Lucanish, B. Privish, D. Hutton, J. Spangler, B. Lockland, J. Pine, F. Smith, R. Johnson, M. Field.

Lacrosse 1967

J. Pyne, Captain



Led by attack men and top scorers Alex Wise and Walt Stroud, the Lacrosse Team placed fourth in the M.A.C. winning five games and losing three. In the first half of the season, the Stickmen faced strong competition. They soon perfected their game, however, and finished the season winning three of the last four games. Senior Captain Jack Pine, John Spangler and Bill Lockland comprised the defensive unit, while Rick Johnson, Mike Field and Joe Huggins were the first midfield unit.

LEBANON VALLEY*	8-5	W
LEHIGH*	10-4	L
SWARTHMORE*	10-3	L
LAFAYETTE*	7-5	W
LOYOLA	10-1	L
TOWSON	4-3	L
WASHINGTON*	16-6	L
FRANKLIN AND MARSHALL*	5-4	W
DREXEL*	6-4	W
STEVENS*	5-3	W
PENN STATE	7-4	L

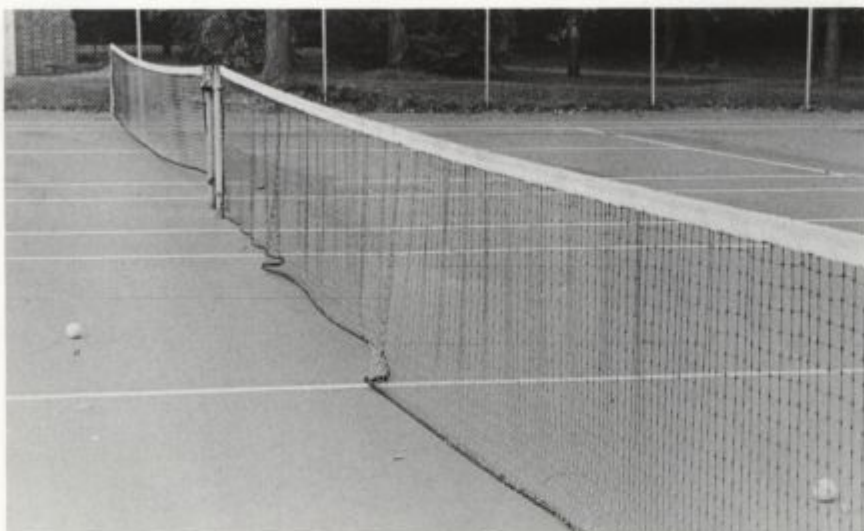
5 WINS—6 LOSSES
MIDDLE ATLANTIC
CONFERENCE GAME
4th—M.A.C.
5 WINS—3 LOSSES





*First Row: D. Darrah, M. Jacobs, R. Pyeritz, G. Policastro, L. Gehrke.
 Second Row: J. Burke, Captain Elect; P. Hitch, Captain; R. Boyer, P.
 Lindbock, Dr. Rylander, Coach; D. Harcketts, T. Hossenstein.*

Tennis 1967



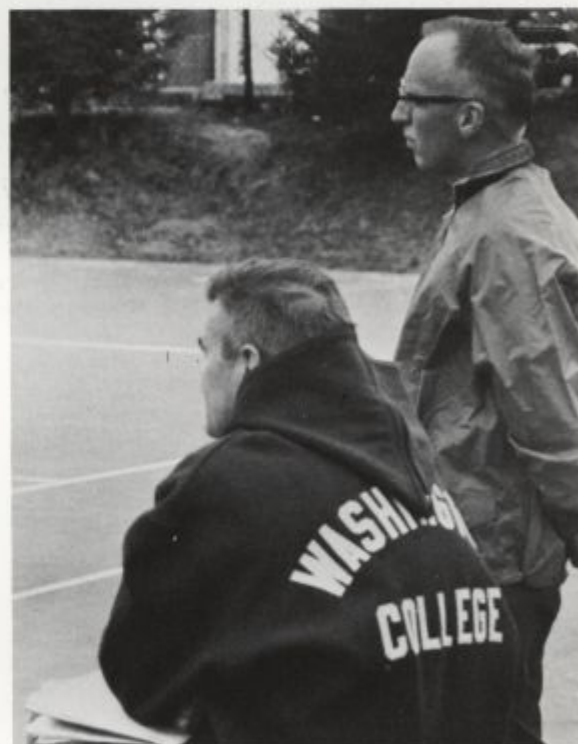
Boasting a victorious season of 5-3, the Tennis Team demonstrated the fine performances of Captain Phil Hitch, the most valuable player Pete Lindback, Larry Gehrke, Ray Boyer, Jim Burke and Dave Darrah. Beginning the season in a burst of energy, the team won the first five matches, including three shutouts. The Blue Hens finished their schedule against a very strong Penn State team that has never lost to Delaware.

LASALLE*	9-0	W
DREXEL*	9-0	W
ST. JOSEPH'S*	9-0	W
WASHINGTON*	9-0	W
TEMPLE*	6-3	W
SWARTHMORE*	8-1	L
BUCKNELL*	7-2	L
PENN STATE	9-0	L

5 WINS—3 LOSSES
 *MIDDLE ATLANTIC
 CONFERENCE MATCH
 M.A.C. 5 WINS—2 LOSSES



M. McGlinchey





Seated: J. Reilly, B. Denbrock, J. Powell, D. Eisenhower, S. Fox, Coach Duncan. *Standing:* C. Pinto, N. DelCampo, L. Brophy, W. Weikenmayer.

Golf 1967



Number one man John Riley led the Golf Team to a very successful year, winning 15 games and losing only 2. Riley won 15 of his matches and lost 2. He also had the low average of 77 strokes a game. The second man was Bill Denbrock, and Charlie Pinto was third. The number four man, Larry Brophy, achieved the best win-loss record of 16-1. The low gross score was 73, which was shot both by John Riley and Bill Denbrock.

LASALLE	18	-0	W
AMERICAN	4	-3	W
GEORGETOWN	4	-3	W
HAVERFORD	16½	-1½	W
PMC COLLEGES	15	-3	W
SWARTHMORE	14	-4	W
PMC COLLEGES	15½	-2½	W
RUTGERS	5	-2	W
GLASSBORO	13½	-4½	W
TEMPLE	9½	-8½	L
JOHNS HOPKINS	11	-7	W
DREXEL	17½	-½	W
ST. JOSEPH'S	12	-6	W
LEHIGH	13	-5	W
PENN STATE	6	-1	L

13 WINS—2 LOSSES
3rd—M.A.C. CHAMPIONSHIPS

B. Weihenmayer



J. Riley