

the REVIEW

VOL. 91 NO. 43

UNIVERSITY OF DELAWARE, NEWARK, DELAWARE

APRIL 11, 1969

Inauguration Program Set

A symposium on matters of central concern to the campus community will fill the first of a two-day program in the inauguration of President E.A. Trabant.

The symposium, scheduled for May 16, will feature five panel discussions in the morning and a series of afternoon seminars. Dr. Charles Bohner, chairman-elect of the department of English, is the chairman of the symposium. Other committee members include Dr. John E. Worthen, assistant provost, Prof. John A. Murray, director of university extension and Miss Dee Lafferty, president of the Student Government Association.

Morning panelists will discuss curriculum, teaching and learning, governance, campus life, and campus community. Afternoon seminars on specific problems confronting higher education will be developed from

student, faculty, and staff suggestions. Seminar topics will likely include such topics as teaching evaluation, the efficacy of grading, forms of dissent, parietal rules, and Afro-American studies.

Bohner points out that "any member of the university may apply to one of the sub-committee chairmen for a seminar and may invite a faculty member and a student to serve as moderator and recorder. The discussion that takes place will become part of the permanent report of the symposium."

"Mortar Board, for example, has already asked to have a seminar on 'honorary degrees and awards,'" noted Bohner.

Students named to serve on the morning panels include Rob Graham, Mark McClafferty, and Bill Wright on the Governance committee; Sabina Bobzin,

(Continued to Page 10)

Print Policy Edited

In order to finalize a policy on student publications the Faculty Committee on Student Publications will hold two meetings this month to hear comments on the revised policy presented to the faculty in March.

Prof. John A. Murray, chairman of the committee, noted that faculty members have responded to the committee's call for comment on the policy that caused much furor last month. At

that time the original policy was attacked by the Student Government Association Senate as being "unconstitutional" and restricting.

The committee, which was acting under a request from President E.A. Trabant, withdrew the original policy from consideration and substituted a revised document to the faculty for comment.

The committee will meet

Monday and April 21 to review all comment made on the document. Murray hoped that students would supply written comments either about the interim policy itself or about the broad subject.

Those interested in commenting on the policy are to address their comments to Murray at the University Extension office.

TEN POINTS

The 10 points of the document are as follows:

1. Materials distributed on the campus should maintain or advance the intellectual, educational and/or social climate of the university community.

2. Members of the university community—students, faculty, staff, and recognized campus organizations, may distribute published materials on the campus provided:

a) they accept full responsibility for the materials;

b) all materials are clearly labeled to indicate individual or organizational sponsorship; and

c) the materials are distributed in accordance with current university policies governing manner and place of distribution.

3. Before any distribution of materials may be made on campus by a person who is not a member of the university community, a member of the university community must agree to sponsor the material.

SPONSOR

4. A member of the university community who sponsors material from non-university sources automatically assumes the responsibility of determining that the manner of distribution is in accord with pertinent university policies.

5. Authorization to distribute printed materials in the following university facilities must be obtained

(Continued to Page 15)

IBM In Error

Philip M. Shar, university registration officer, has announced that a mechanical failure resulted in students receiving incorrect registration confirmations. The announcement read as follows:

Owing to a hardware failure in the IBM 1401 some of the recently received confirmation of registrations omitted courses for which you are enrolled.

Within one week a corrected confirmation of registration will be sent to those students who received an incorrect one.

Phi Beta Kappa Society Elects Group

Alpha chapter of Phi Beta Kappa at the university has elected 32 seniors and a distinguished alumnus to its membership.

Senior liberal arts majors of superior scholarship are eligible for election to the national honorary, the nation's oldest honorary society.

Dr. Harvey C. Moore, professor of anthropology at American University in Washington, D.C., who received his B.A. from Delaware in 1938, was honored along with members of the Class of 1969.

It is customary to elect to membership those alumni who are eligible but who graduated before a Phi Beta Kappa Chapter was installed on campus. Alpha Chapter was installed here in 1956. Dr. Moore was elected to Phi Kappa Phi, open to highest ranking seniors, when he graduated.

Seniors elected were: from Wilmington, Del. — Stephen Aron Benson, Arthur Wilson Colbourn, David Lawrence Falk, Spotswood C. Foster III, Alain David Fresco, Peter Alfred Jumars, Kathleen Anne McKinley, Susan Pricilla Mitchell, Asta Elisabeth Overkamp, Robert Darien Rafal, Phillip Reybold Tatnall, Jr.

From Newark, Del. — Janet Susan McCloud, Sheila K. Martin, Jane Menard, Robert Ellis Troxell.

Other Delaware — Thomas Richard Hufnal, Dover; Joseph Aloysius Kuhn, Claymont; Norabelle Frances Tidwell, New Castle; Christiane Ruth White, Hockessin.

Other states — Louis Arthur Baer, Chester, Pa.; Marlo Gwynne Comer, Harve de Grace, Md.; David Dunlap Cornell, Lafayette, Calif.; Susan Kay Deromedi, Royal Oak, Mich.; Nancy Ruth Fowler, Collingswood, N.J.; Fred Haddox Harrington, Philadelphia, Pa.; (Mrs.) Carole Patterson Luff, Kennett Square, Pa.

Janelle Magee, Haddonfield, N.J.; Clare Pfizenmaier, Hingham, Mass.; Robert Arnold Purvis, Havertown, Pa.; (Mrs.) Bonnie Lew Arden Robb, Kennett Square, Pa.; Robert Gordon Stire, Baltimore, Md.; (Mrs.) Lynette Pennington Swartz, West Friendship, Md.

Rally To Stimulate Voter Participation In Election

Have you decided who to vote for in the SGA election on Tuesday and Wednesday?

In order to help students make up their minds, the SGA election committee is sponsoring a school-wide rally. The main SGA candidates will speak at the rally held in the Dover Room of the Student Center on Monday at 9:30 p.m.

"The primary purpose of the rallies is to stimulate student interest and let them get acquainted with the candidates because we want at least 50% vote this year," stated Sue Danehower, rally chairman.

Students can vote in all the dining halls during lunch and dinner on both Tuesday and Wednesday.

Polls will be open in the Student Center from 12 a.m. to 10 p.m. on Tuesday and 12 a.m. to 7 p.m. on Wednesday. West lounge will also be open 8 p.m. to 10 p.m. on Tuesday.

Students must present their ID cards to be eligible to vote. Seniors may also vote in this election.



RALLIES ON CAMPUS provided opportunity for candidates to meet the people. Here Linda Kafka, HE1, and Rob Graham, ASO, earnestly discuss a point.

Staff Photo by Sing Lee

THIS WEEK

TODAY

WCC GAY 90's DANCE at West Dining Hall from 8:30-midnight. Five cent root beer and free peanuts. W.C. Fields flicks will be presented during band-breaks. 75c with ID.

MATHEMATICS COLLOQUIUM at 2:10 p.m. in 219 Sharp Lab. Prof. Ralph Kleinman will speak on "The Boundary Value Problems for the Helmholtz

Equation as Perturbations of Potential Theory."

BASEBALL. Delaware vs. Montclair State, away at 2 p.m.

GOLDIE'S DOORKNOB. Johnny Frink, folk singer. Two shows: 9:30 and 11 p.m. Admission 25c.

TOMORROW

GOLDIE'S DOORKNOB. Johnny Frink, folk singer. Two shows: 9:30 and 11 p.m. Admission 25c.

POP FLICK, "How To Succeed in Business Without Really Trying." Wolf Hall

SUNDAY

SENIOR RECITAL. 4 p.m. in Mitchell Hall. Jo Ann Cooley, soprano, and David Lutz, bass, will perform.

HILLEL BRUNCH at Temple Beth El, 11:30 a.m. Election of officers and movie, "The Magician."

LECTURE. "Introduction to Unitarianism," by Mr. Robert Hemstreet, minister of the Unitarian Fellowship of Newark. At the Fellowship, 420 Willa Road. Open to all members and friends of the fellowship.

SUNDAY CINEMA. "The Whisperers," Wolf Hall Auditorium, 7 p.m. Admission free with ID.

MONDAY

LECTURE. "Opportunity in the Medical Corps," by Lt. Cmdr. Leslie Cronau. M-V Room, 7 p.m.



TODAY
3-4:30 Colonial Bogy Show, Top Hits
4:30-5:30 John Rafal Show, Top Hits
5:30-7 Carol Reed Show, Dinner Music
7-7:30 News
7:30-9 Bob Canning Show, Underground
9-10:30 Don Henry Show, More
10:30-12 Steve Brown Show, Top Hits
12-12:15 Final News Report
12:15-2 Don Ritter, Contemporary

TOMORROW
12-3 Steve Brown Show, Top Hits
3-6 Top Hits Show, Top Hits
6-9 Soul Show, Soul
9-11 Bob Canning Show, Top Hits
11-1 T.I. Show, Underground

SUNDAY
6-9 The Mad Russian Show, Anything goes
6-11 Jon Rafal Show, Top Hits
11-1 C.W., Oldies

MONDAY
3-4:30 Gary Pierce Show, Top Hits
4:30-5:30 C.W. Show, Top Hits
5:30-7 Rich Summerville, Dinner Music
7-7:30 News
7:30-9 Hank Goldstein Show, Jazz
9-10:30 Don Henry Show, Underground
10:30-12 John Rafal Show, Top Hits
12-12:15 Final News
12:15-2 Tape Music Show, Easy Listening
News and sports on the hour, news headlines on the half hour. News and sports in depth at 7 p.m. on the weekdays. Final news report at 12 midnight on the weekdays.

'Mind-Benders'

By DONALD W. HARWARD

ANSWERS

1. Since Leonardo said that Spumoni did it, Spumoni's first and third statements are equivalent in meaning and are therefore either both true or both false. Since only one statement is false, they are both true. Dagmar's third statement is, therefore, false and so his first two are true. Therefore Butch's third statement is false and so his first two are true, of which the second reveals that Ralph is the guilty man.

2. 738-9573

NEW ONES

1. Given the following three statements as premises:

a) If Bob takes the bees, then Bob misses his appointment, if the bus is late.

b) Bob shouldn't go home, if 1) Bob misses his appointment and

2) Bob feels downtrodden.

c) If Bob doesn't get the job, then, 1) Bob feels downtrodden, and 2) Bob should go home.

Which, if any, of the following can be validly concluded:

i) That Bob feels downtrodden, if a) the bus is late or b) Bob misses his appointment.

ii) That Bob doesn't take the bus, if a) the bus is late and b) Bob doesn't get the job.

iii) That Bob doesn't miss his appointment, then a) Bob shouldn't go home and b) Bob doesn't get the job.

2. In a recent election, three candidates A, B, and C were running for the office of treasurer. The total votes cast were 15,424 of which A received 1000 more than B and 1214 more than C.

How many votes did each receive?

E-52 Theatre Sets Second Lab Show

Mr. Markby—who is he?

An odd collection of characters have gathered to find out, everybody is waiting to be let into his office, but for very different reasons: a couple believes he is the doctor to confirm an eventual pregnancy, a psychedelic hippie/yippie writer is there to see his publisher, a man living in the lavatory downstairs is simply sitting in the waiting room reading the magazines while the plumber renovates his residence.

These are the ingredients in a tragi-comedy written by

H. Michael Walls that will be staged in E-52's second Lab Show for the semester on Mitchell Hall's main stage tonight and tomorrow night. Walls, a senior drama student, has also directed the play.

"The plot has a point where the play changes direction and seriousness takes over," the playwright/director says, "it does not offer any answers, hopefully it will raise laughter and open questions."

The second feature of the show will be "The Dirty Old Man," a one-act play by Louis John Carlinio, contemporary American playwright in the realistic genre. The play, a fine description of the relationship between a lone, isolated old man and a teenage girl and the communication problem between the generations, is directed by Val Nardo, AS9.

ODD BODKINS

WAA Elections

Procedures for candidates in the Women's Athletic Association elections on April 28 have been announced by the Executive Council.

Candidates for president, vice-president, secretary, and treasurer must pick up petitions from Carole Butler in Carpenter Sports Building between 9 a.m. and 5 p.m. and must return the completed petitions by 4 p.m. on April 18.

Girls who qualify to vote in this election will be informed of their privilege by letter. The candidates will speak at the WAA meeting on Monday at 6 p.m.

The Week In Review

By UNITED PRESS INTERNATIONAL



Four Powers In Mideast Talks

WASHINGTON—Both King Hussein of Jordan and President Nixon used the word "explosive" to describe the worsening situation in the Middle East. This came at the White House Tuesday as the two leaders exchanged remarks prior to a private meeting. They also indicated that the rest of the world might become involved in the area unless the crisis situation is ended.

Attempts to end the crisis continued in New York Wednesday as the United Nations representatives of the U.S., Russia, Britain and France conferred for the second time since Thursday. The secrecy shrouded conference at the Soviet U.N. mission headquarters is aimed at working out some basis for Arab-Israeli discussions.

Israel hasn't been enthusiastic about big power intrusion into Middle East affairs. It believes only direct Arab-Israeli negotiations will resolve the crisis.

Court Demands Exact Redistricting

WASHINGTON—The Supreme Court ruled, in effect, that the "one man, one vote" doctrine means exactly what it says. The high court overturned Missouri's third try at congressional redistricting Monday—even though the population difference between the largest and smallest districts was only 25,000. Justices said this was too much. The ruling will send more than 30 states back to the drawing boards for new efforts at equitable redistricting.

Nixon Orders Funds For Troubled Cities

WASHINGTON—A full-scale drive was kicked off Tuesday to rebuild neighborhoods scarred by riots in 20 major cities. President Nixon ordered nine million dollars in federal funds made available immediately in the top-priority campaign to help the cities revitalize the troubled areas. And the president's urban affairs adviser, Patrick Moynihan, said Mr. Nixon also has instructed the Housing and Urban Development department to approve quickly another 200 million dollars worth of renewal programs.

Sirhan Trial Goes To Jury

LOS ANGELES—Both sides have rested their cases in the three-month-long trial of Sirhan Sirhan, the accused assassin of Senator Robert Kennedy. Final arguments were expected to begin Wednesday, and the Los Angeles Court jury may get the case today. The only decision asked is the guilt or innocence of the young Arab without considering penalty.

Rogers Suggests Future U.S. Withdrawal

WASHINGTON—Secretary of State Rogers hinted strongly Tuesday that the U.S. might withdraw some of its forces from South Vietnam. However, he said there is no such plan at the present. At his first formal news conference, he said—"I would certainly hope that there would be some chance of mutual withdrawal of troops this year."

Police, Demonstrators Plead In Chicago

CHICAGO—Four of seven Chicago policemen indicated on charges of beating demonstrators and reporters during the Democratic National Convention last year have pleaded innocent. They appeared Wednesday before Federal Judge Joseph Sam Perry. He set April 25th for a ruling on trial motions and May 12th as the trial date. Arraignments of the remaining officers are set for later this week. Eight demonstration leaders indicted for conspiracy to incite rioting were arraigned yesterday.

Czech Dissidents Consider Action

PRAGUE—Students, teachers and workers in Czechoslovakia have joined in the chorus of opposition to the return of censorship by the Communist Party. Czech students talked Wednesday of hunger strikes and sit-ins. The protests are only verbal so far and there were no reported plans for industrial strikes or street demonstrations.

By DAN O'NEILL



Long Range Plans Call For New Campus

In order to "hopefully delay some of the rumors and suspicions going around," the university presented its proposed long-range development plans to the Newark Civic Association.

An estimated full-time enrollment of 15,000 by 1978 is the basis for the crop of new plans. A 20-year development plan was prepared by the university and Sasaki, Dawson, Semay Associates, Inc. of Watertown, Mass., to efficiently plan for the future.

According to the guide, "Essentially, the university is faced with constructing another campus equal in size to the present physical facilities," by 1978.

An academic area, extending from Main Street to Winslow Road and from Orchard Road to Academy Street would be the focal point of expansion. Buildings would be constructed on the university-owned Laird Tract and on four additional acres, proposed for purchase by the guide.

But it is not that easy.

UP AGAINST THE WALL

There are many problems attached to the proposed expansions. They involve zoning regulations, traffic difficulties, and Newark-University relations.

According to Robert Lamison, university planner, the university has in the past created problems for Newark and that future plans may create more problems, and he added, "we don't have all the answers."

Echoing this statement, Dr. George Worrlow, vice-president for university relations, said that in the past the university did things without considering any one else. He added that this policy has changed and that "this meeting (with Newark residents) is an example."

University officials emphasized that these plans are a proposal by a consulting firm and that they have not been officially adopted by the university.

Student Freed In Drug Case

Deputy Attorney General Jerome O. Herlihy said there are many degrees of culpability in the traffic of marijuana and dropped a three-year sentence against a university student.

William J. Graham III, ASO, of 2244 Dermond Ave., Upper Darby, Pa., and Dennis K. Sponholtz, 19, of Rockville, Md., were found guilty Sept. 19 in New Castle County Court of Common Pleas of selling marijuana in their dormitory to fellow student John Wilson Jr., ASO, 600 St. Georges Rd., Philadelphia, Pa. Both were given three-year jail terms.

In their appeal to Superior Court, Graham had his charge dropped and Sponholtz pleaded guilty to the lesser offense of possession of marijuana. No date has been set for his sentencing.

SGA Resolution Terry Degree Opposed

By LINDA ZIMMERMAN

However, SGA feels that Terry's past conduct of employing Delaware's national guard to solve the state's racial problems does not merit such an honor.

RESOLUTION

Monday evening in a vote of 21-2, SGA passed a motion

presented by Bob Rafal, AS9, which put SGA on record in opposition to the honorary degree.

The resolution holds Terry responsible "for the armed occupation of the city of Wilmington and for the resulting aggravation of racial tensions in that city."

The resolution has been sent to President E.A. Trabant, James M. Tunnell Jr., chairman of the university board of trustees, and Terry.

FURTHER STATEMENT

It further states, "While we do not feel that it is the prerogative of the SGA to select candidates for honorary degrees, we do feel that the sentiments of students should be considered before such degrees are conferred."

The decision to award Terry a degree was made by the board of trustees in 1967. At this time it was decided that Terry would receive the honor the spring following his last term due to defeat in election or retirement.

At the February faculty meeting the conferring of the degree was unanimously approved.

The "Heterodoxical Voice," which has also criticized the awarding of this degree, has promised "an appropriate response" if it is presented at graduation.

Trabant, Tunnell Oppose Colleges' Consolidation

A recent proposal to consolidate all post high school education under the auspices of the university's board of trustees has been rejected.

The proposal was made by the Academy for Educational Development for Delaware's Higher Educational Aid Advisory Commission last month.

In the report, titled "Alliance for Greatness," the

Academy pointed out that a better state-wide education system could be established if the university was given the sole responsibility for carrying out all post high school education.

DELAWARE OBJECTS

Soon after the report was released, Dr. Luna I. Mishoe, president of Delaware State College, and William C. Kay, chairman of the board of trustees of the Delaware

Technical and Community Colleges, publicly objected to the idea.

In a joint statement by President E.A. Trabant and James M. Tunnell, Jr., president of the board of trustees, officials here followed the objections made by Mishoe and Kay.

The statement stated that the university was in agreement with many of the objectives of the Academy and "would take the initiative, provide leadership, and cooperate fully in the development of additional voluntary associations among these institutions."

COOPERATION NEEDED

The statement by the trustees said "that many of the goals suggested in the

(Continued to Page 6)



THE DELAWARE CRICKET TEAM is getting in shape for its first match of the season against Howard University. Review Photo

Cricket Team Practicing For Team's First Match

The Delaware cricket team started practice on Harrington Beach to get in

Yippie Lectures

Jerry Rubin, leader of the Youth International Party (Yippies), spoke in the Rodney Room last night. Sponsored by the SGA, he spoke on militarism, Du Pont power, racism, his harassment, and his recent indictment by the Chicago Grand Jury.

Violation of the 1968 Civil Rights Act is the particular offense Rubin is charged with. His part in the convention demonstrations last fall precipitated the action. Rubin has gone before the House Un-American Activities Committee, where he shot the members with a Matel machine gun. He was also the one who hoisted a pig as standard bearer for his party.

Dick Gregory, who was scheduled to speak here, is unable to come because he has not been released from jail himself.

shape for their first cricket match of the season against Howard University this Saturday.

Last year the cricket team played the first game ever in the history of the university and defeated Haverford College, one of the oldest cricket playing colleges in the United States.

The captain of the team, a Pakistan University letterman, Khaled Nizami, is quite optimistic and confidently says, "We have a much better team this year and hopefully we will win the forthcoming game against Howard University."

Most members of the cricket club are foreign students from India and Pakistan. A few Americans, including some coeds, have shown interest in the game and they enjoyed playing cricket. All those interested in playing should get in touch with Khaled Nizami, Director's Apartment, Dickinson "B," 738-2455.

The cricket team will practice regularly on Harrington Beach between 3 and 5 p.m. All those interested are welcome to join.

Peterson Announcement

State Jobs Open

Outstanding students in government might be interested in a summer internship program which Governor Russell Peterson announced at a recent news conference.

The ten-week Governor's Summer Fellows Program will be administered by the Division of Urban Affairs at the university, said Peterson.

PURPOSE

"The purpose is to give students of outstanding ability and promise, who have demonstrated a sincere interest in career public service, an opportunity to spend ten weeks working at fairly high levels in state, or perhaps local, government," Peterson explained.

The program will start June 23 and end August 29. It calls for the student to be paid \$100 a week, a total of \$1,000 for the summer. Plans call for up to 15 students to be included in the program this year.

FINANCES

The university has already given \$5,000 towards the project. Another \$5,000 will be sought from private sources, while the General Assembly will be asked for \$5,000. Eligibility requirements call for the student to have completed his junior or senior year of college or his first year of graduate school. He must be a Delaware resident or student

with demonstrated academic ability, although there will be no rigid requirements on his field of study. Preference will be given to Delaware residents.

APPLICATIONS

Applications may be sent to Professor C. Harold Brown at the university's urban affairs division. Peterson said he has asked Delaware State College officials to appoint a liaison person to work on the summer project.

Peterson stressed that the students will be given "meaningful assignments" in order to spark enthusiasm and interest.

One way to insure this is to "have state agencies compete for an intern by seeing which agencies can offer the most exciting and challenging jobs" Peterson commented.

SEMINARS

The student interns will hold regular seminars at the urban affairs division in Newark to "swap experiences and ideas." Heads of state agencies will speak at the seminars. The program probably will include visits to sessions of the General Assembly.

Peterson concluded, "We hope through this program to get more and better qualified people in government. Even if these students don't end up in public service, their experience cannot help but make them better citizens."

Graham, Vest, Sherman Endorsed

The Review, after studying the candidate and interviewing each, endorses Robert D. "Rob" Graham for president of the Student Government Association, Miss Jerry Vest for Association of Women Students president, and Michael Sherman for reelection as president of the Men's Residence Hall Association.

We feel that each of the above candidates is the most capable person for the leadership of those three major organizations. All have worked in the organization and have compiled excellent records. The Review urges their election.

Rob Graham

Rob Graham has contributed greatly to the SGA Senate this past year. He headed the Constitutional Revision Committee which updates the structure of student government. For the work he did on this com-

mittee alone, Graham deserves recognition; however, he was also constantly one of the best informed and interested senators this year.

As commuter senator he spent as much time on campus as do most resident students. His proposals are encouraging especially that the Student Center and the Library remain open 24 hours in line with the elimination of women's hours. Graham feels that the implementation of the major documents passed this year, such as Student Rights, Judicial Reform and Scarpitti Report, will be the major focus of an administration led by him.

"If these documents prove to be worthless then student government is dead. Everyone has worked too hard this year to let these advancements go unused," Graham stressed.

We found Graham, on the basis of his outstanding record in the SGA Senate this

past year and his plans for student government next year, to be the best candidate.

Jerry Vest

Jerry Vest is impressive with her enthusiasm for the office of AWS president. She has compiled an excellent record as president of Russell D and as vice-president of Russell D-E, one of the more active coed housing units. Her grasp of the AWS and its role in the future is firm. She plans for more interaction on the district level for women students and foresees the merging of AWS and MRHA.

"The women see what the men are getting and wonder why they don't have the same things. There is so much that a AWS-MRHA can do."

Miss Vest's greatest asset, however, is her enthusiasm. She is bubbling with the dedication that AWS needs to move forward in the coming years.

Mike Sherman

Although he is unopposed, Mike Sherman, we found deserves recognition for the work he did in MRHA this year. For this reason we overwhelmingly endorse him for reelection.

In MRHA he moved the open dorms proposal off the shelves and into passage, expanded men's playbill, made the MRHA executive council a viable body, and increased interaction with AWS.

Again, as with Rob Graham and Jerry Vest, Sherman's enthusiasm made many things possible. It is hard to dislike him and as a result he gets much accomplished.

In the SGA Senate, Sherman, in addition to much dedicated work, has provided much of the relief from the tedious work of that body.

After only one year it is hard to imagine anyone else leading MRHA, we are glad that Mike Sherman will be back for another year.

We sincerely feel that the above three candidates are the best for the offices. This is not to say that their opponents are not worthy of election; rather that the editors of The Review find the above students well-qualified for the offices.

We strongly urge the election of Rob Graham, Jerry Vest and Mike Sherman.

The Editors

The Review Endorses...



Write The Committee

Several weeks ago the Faculty Committee on Student Publications released an interim policy regarding the distribution of publications on campus. When the document reached the Student Government Association the roof caved in on the committee.

Cries of "unconstitutionality" and censorship were leveled from all segments of campus community, including this newspaper.

Prof. John A. Murray, chairman of the committee, reacted decisively and withdrew the document from the agenda of the faculty meeting. He called his committee in special session and invited representatives of the SGA to participate in the redrafting of the document. Within one week a revised policy was presented.

Portions of that revised document, which

is now serving as interim policy, appear on page one of today's issue. Prof. Murray has urged all students to read this document and make recommendations on its content.

We feel that the cooperation which Prof. Murray and the entire committee has extended to the student body is commendable. It is rare that these faculty-student committees encourage students to comment on documents of this type.

The entire committee is to be commended for their hard work after the furor over the original document. Publications advisers Robeson Bailey, Gibbons Ruark, Jerome Tovo, and Bob Blake, and students Emily-May Richards, Bev Wiebe, and Dean Marriott worked hard to finish the document.

THE DELAWARE REVIEW

VOL. 91 NO. 42

APRIL 11, 1969

Editor-in-chief	Andrew M. Stern
Business Manager	Kenneth G. McDaniel
Managing Editor	John M. Fuchs
Executive Editor	Susan M. Greathouse
Sports Editor	Steve Kaffler
Campus Editor	Susan Smith
National Editor	Eleanor Shaw
Features Editor	Phyllis Jones
Sales Manager	Robert Lynch
Photo Editor	Steve Scheller
Circulation Manager	Sue Reece
Staff Artist	Dick Codor
Secretary	Gerri Duzsak
Faculty Advisors	Robeson Bailey, Harry Connor

Day Editors: Kate Boudart, Marge Pula, Linda Shrier, Linda Zimmerman, Brooke Murdock, Allen Raich, Chuck Rau, Steve Anderson.

Staff Writers: Jim Bechtel, Gerald Brunner, Jan Callum, Kathy Capson, Dale Coulbourn, Doyle Harting, Jane Hollenbeck, Trish Heck, Henrik Kyles, Kerry McKinney, Chuck Molloy, Barb Paul, Phyllis Rice, Carolyn Sale, Kathy Scheid, Bill Schwarz, Ron Williams, Scott Wright.

Published twice weekly during the academic year by the undergraduate student body of the University of Delaware, Newark, Delaware. Editorial and business offices are located on the third floor of the Student Center. Phone: 738-2649. Opinions expressed are not necessarily those of the university. Advertising and subscription rates on request.

Entered as second class matter, December 13, 1945, at the Newark Post Office, Newark, Delaware, under the Act of March 3, 1879.

National newspaper advertising sales handled through the National Educational Advertising Services, 360 Lexington Ave., New York, New York 10017.

UNITED PRESS INTERNATIONAL

Letters To The Editor

Students Endorse Graham

TO THE EDITOR:

During the past year, many important issues were raised on campus which directly concern each student and every facet of student life. The Statement on Student Rights and Responsibilities, the elimination of women's hours, men's visitation hours, and the new SGA constitution and by-laws are only some of these changes. The coming year will see the implementation of these policies and the testing of their viability. A powerful student government is vital for these to be effective.

After carefully considering the candidates for SGA president, we the undersigned, heartily endorse Rob Graham. Rob has proven his ability in the field of student government. His attendance record is perfect and he has been a member of numerous Senate committees. As chairman of the Constitution Revision Committee, Rob and the other committee members wrote a document which gives greater responsibility to the students and will be the keystone to the running of an efficient and powerful SGA. In light of this and because of Rob's vast experience, dedication, and concern, we give him our full support.

SONDRA ARNSDORF - Chairman, AWS Sorority Committee
PEG BEDINGFIELD - Senator at Large; Candidate for SGA Secretary

SABINA BOBZIN - District Senator; Secretary, Class of 1971
MIKE CAVEY - District Senator candidate
STEVE CECI - President, Class of 1972; Candidate for Commuter Senator

GEORGE CHAMBERLAIN - Review Business Manager, 1968-1969

JIM COUCH - Co-captain, U. of D. Basketball Team
JOHN DICKSON - District Senator
TOM DiMUZIO - Member, U. of D. Football Team
LEIGH DIVINE - Editor in chief, Blue Hen
JOHN FAVERO - Member, U. of D. Football Team
VET FREEMAN - Secretary, Class of 1972
CAROL GALBIATI - District Senator Candidate
TORY GIBB - Commuter Senator
TOM GLADWYN - President of Brown Hall; District Senator Candidate

STAN GLOWIAK - Senator at Large Candidate
BRYAN GORDON - WHEN Program Director
SUE GREATORREX - Review Executive Editor
DICK JOLLY - SGA Treasurer
PHYLLIS JONES - Review Feature Editor
STEVE KOFFLER - Review Sports Editor
SANDY MARTORELLI - AWS Vice President
MARK McCLAFFERTY - District Senator; Candidate for SGA Treasurer

KEN McDANIEL - Review Business Manager, 1969-70
HOWARD MEYERS - Senator at Large
LINDA NERTNEY - Co-captain, U. of D. Cheerleaders
DAVE NORSTROM - District Senator
LINDA PESCE - District Senator Candidate
LOREN PRATT - Co-captain, U. of D. Basketball Team
BOB RAFFA - District Senator Candidate
JOANNE RASH - President, Women's Central Board
MARLYN SCHREIBER - Co-captain, U. of D. Cheerleaders
ELEANOR SHAW - Review National Editor
MIKE SHERMAN - MRHA President; SGA Senator
LINDA SHRIER - Review Features Day Editor
SUE SMITH - Review Campus Editor
TENA SONESON - District Senator
HARRIET SPEAR - Treasurer, Class of 1971
GREG STAMBAUGH - WHEN Business Manager
ANN STEGNER - Commuter Senator
MARY WARNER - President, BSU, Senator at Large Candidate

ELAINE WOODALL - Commuter Senator Candidate
RICK ZAPPA - Commuter Senator Candidate

Elementary Teacher Demoted; Committed Kids May Sit In

ANN ARBOR, Mich. (CPS) "If we need to, we'll have a sit-in. We'll just sit down and do nothing," declares Andy Schoultz, a sixth grader at Northside Elementary School.

Northside Elementary School!

In an action similar to those at many universities over decisions on tenure, a group of concerned fifth and sixth graders have confronted Ann Arbor Superintendent of Public Schools Scott Westerman and demanded reinstatement of a teacher who was recently demoted.

The leaders of

the movement, who call themselves the Kids Committed for Mister Silvan (KCMS), mobilized recently when they learned that their teacher, Joseph Silvan, had been demoted from his regular teaching position to full-time substitute.

"He helps, he talks to us," says Lynn Erlich, one of the leaders of the KCMS. "His entire idea of education is getting cut off. Mr. Silvan needs a chance."

"With Mr. Silvan you don't have to gobble up information, but just soak it up," says Schoultz, whose two brothers have also joined the action. "He doesn't shove education down you."

So last week the students drew up a petition and began to pass it around their class. All 30-odd students signed, according to Miss Erlich—except one adamant boy who ripped up one petition and flushed a second down the toilet. ("We would have had more signatures but we didn't have time," Miss Erlich adds.)

DEMOCRATIC PROCESS

The KCMS then attempted to speak with Superintendent Westerman, but were shunted from one bureaucratic niche to another. Granted an interview with a director of personnel,

"WAIT! WE WERE JUST KIDDING...!"



Group Grooves To Masten; Singer Conveys Closeness

By CARL BURNAM

Real people are rare, exciting and beautiful. Forty students encountered just such a beautiful person in Ric Masten Tuesday night.

Billed as an "existential poet" and songwriter, he had some brilliant moments in his Wolf Hall program, as the few of us present were caught up in laughing, listening, singing along, and just generally grooving to the man for about two hours.

Masten dropped out of show business seven years ago, and has since consciously avoided putting on the kind of entertaining program that sets up an impersonal barrier between performer and audience. His purpose is not so much to entertain as to experience everyone present.

DIARY OF SONGS

On tour since September, he has played at 87 colleges, to crowds of up to 800. He is wary of large, conditioned audiences.

Masten sang a trip through his life, using his diary of songs to create images and his attitudes and experiences. Throughout the first part of the program, he rapped extensively on each song. He was refreshingly honest about the phoniness he had realized in his own past, and about his evolution from what he called the "protest biz."

During the second part of the program, he stopped the rapping, and just sang and read poetry. The communication was every bit as effective, as the intimate group in the front of the auditorium was free to experience many moments of closeness.

An evening with Masten is impossible to discuss objectively. The program involved everyone so personally that we came away with impressions and feelings more than concrete observations.

"The cardinal sin in this age is for someone to feel he's 'alone alone,'" he said. None of our little group met Ric Masten and left feeling 'alone alone.'

He will sing again tomorrow at Germantown Unitarian Church in Philadelphia from 11 a.m. until 4 p.m. at a day conference sponsored by the Student Religious Liberals Regional Committee. Interested students should contact Sam Gish, ASO, in 304 Colburn Hall by 4:30 today for details.

Drive, Determination
Graham Praised As Leader

TO THE EDITOR:

Drive, determination and dedication are the essential characteristics of all leaders. During the past academic year, I have had the privilege of working closely with an individual who highly exemplifies these principles: Mr. Robert Graham.

The Student Government Association has made unprecedented strides in all facets of university life. Many programs have been developed, reviewed and approved. This coming year will be the crucial one for implementing these policies. The students need a strong leader; a person totally aware of the campus and sensitive to the feeling of the students.

With the ratification of the long awaited constitution, the S.G.A. has unlimited potential. But any organization is only as effective as its leader. This is

why it is imperative that S.G.A. have that vigorous leadership: the drive to motivate others, the determination to meet challenges and the dedication to hold steadfastly to those principles he cherishes.

An unblemished attendance record; a list of actively working committees and the chairmanship of the Constitution revision committee are only some of the tangible contributions which Rob made this past year. But the intangible feelings and emotions, the beliefs, goals and values he holds, all go to make up the man. It is because of this unique composition that I highly admire, respect and support for the presidency of our Student Government Association, Mr. Robert Graham.

PAT PHILE, HEO

'Neath The Arches

LAMBDA CHI ALPHA
Pinned: Brother Steve Palmer, AS1, to Miss Linda Clough, EDO.
THETA CHI

Pinned: Brother Robert Pearce, BE1, to Miss Renita Moglioni, ED1.

ALSO ON CAMPUS:

Engaged: Miss Diane Northwood, ED9, to Gerald Street, AS9.

Miss Malorie Drake, ASO, to Brian C. Derby.

Miss Kathleen Carr, HEO, to Tim Holliday, United States Naval Academy.

Miss Diane Elizabeth Marie Johnson, Wilmington, to William Edwin Hayman, ED2.

Ted Muterspaw, AS9, to Lois Phien.

REVIEW CLASSIFIED ADS

APARTMENTS

APARTMENT TO SUBLET June through August. Towne Court Apartments, one-bedroom, \$115. Option to take over after the summer. Contact Jay Reed, 369-9442.

APARTMENT TO SUBLET over the summer. Centrally air-conditioned. Fully equipped and furnished. Suitable for 2 to 3 residents. Phone 737-1009.

MARRIED COUPLE looking for Apt. to sublet June through August. Furnished. Prefer Conover Apts or other. Vicky Compton, 737-9877.

APARTMENT FOR SUMMER Large, furnished, 2-bedroom apt. Two blocks from campus. Can move in 1st week in June. Contact John, Ivy Hall Apts. No. E-2 after 7 p.m.

AIR-CONDITIONED, CARPETED APARTMENT to sublet for summer (or longer if wanted). Houses two to five comfortably, more if you want. Man, woman or beast. Call Gil at 368-7775 after 9 p.m.

ROOMMATE WANTED to share two bedroom apt., June through September 1. Call 737-9814 and ask for Laurette or Barb.

AUTOMOBILES

FORD FAIRLANE 1960 has been sold. Disappointment to

Kids Mobilize...

(Continued from Page 5)

the group became quickly disenchanted with what one KCMS member described as "some long thing about making decisions."

So far, no one in the school system has been willing to tell the KCMS just why their teacher has been demoted. According to one student spokesman, some parents originally signed a petition requesting Silvan's dismissal because he gave his students "too much freedom."

many is regretted. Now classy **HILLMAN MINX 1959** for sale. Everything works except voltage generator. First offer \$60. Call Dinesh Mohan 737-5273 or 209 Evans Hall. Last chance to make a good deal.

VENKO STINGER-basic Corvair Corsa, full GM warranty valid til August. Fiberglass rear deck with functional air scoops. Five Michelin X radial tires. \$1500. 738-2409 or 368-4210.

'63 AUSTIN HEALY 3000 3100 mi. r.h., w.w., o.d., many extras \$1400. Phone 738-2340.

1967 OPEL STATION WAGON, White, W W Tires, Luggage Rack, Power Disc Brakes, Radio and Heater, 2300 miles, 30 M.P.G., 80HP Engine, Snowtires on Extra Wheels, Call 737-8865 after 6 p.m.

1964 VW 1500 Sedan Very good condition \$825 368-1219.

'67 ASA FERRARI 1000 GT - rare maroon Bertone-bodied coupe with tan leather interior. Webbers, Pirellis, Borannis, Abarth, 4-spd. with overdrive. 9,500 miles. Owner going to Europe soon, and will sacrifice below wholesale for immediate sale to finance trip. 737-1174 after 5.

\$150 GETS YOU wheels with enough room for a party. This DeSoto is very clean and is equipped with power steering, radio, heater, electric wipers, new tires and new brakes. The excellent hemi-head V-8 engine is worth more than the asking price by itself. The creek will be only minutes away with this reliable transportation. Ask for Tom any evening at 368-9731.

1967 OPEL STATION WAGON, 2400 miles, W W tires, Radio and Heater. Excellent Condition. Red Book Retail Price \$1325. Selling Price \$1175. Call 737-8865 after 6 p.m.

'62 Corvette, 2 tops, 327, 4-speed, exc. cond., low mileage, Call 368-9051 any time morning or evening.

PARTS FOR SALE. Wrecked my car ('63 Chevy II). Generator, 12 volt battery, tire 7.00x13, radio (transistor) and rear speaker, jack, headlight, portawalls, rear lights, chrome gas cap. Call Doug 737-4894.

FOR SALE

FENDER ECHOE REVERB UNIT, \$130. Gibson Stereo

electric guitar \$300. Vox Jaguar organ \$300. Call 999-7962 anytime.

SAVE ON MAJOR NAMEBRAND STEREO components. Call for price on any component or system. 368-9731.

COMPLETE SET of Slingerland drums pldjian cymbals \$300. Excellent Condition Call 998-2023.

CUSTOM STEREO 8 track tape cartridges made from your favorite LP's or 45 R.P.M.'s-Phone 239-7015.

FARFISA COMBO COMPACT ORGAN single manual, cover included. \$350 or best offer. Magnatone Amp with 2 twelve, reverb, etc. \$100.

Super Westomat 35 mm Camera with Agfa flash attachment \$30. Al Jones 368-1519 or 737-9831.

'96" SURFBOARDS HAWAII Reasonable Price. Arrange to see board. Call Bill 368-8868.

SURFBOARD: RANDALL, clear finish, 14' rws, stringer, speed fin, 1 layer 14 oz. glass with overlapped rails and tailblock, (was new in July) excellent buy-Phone: 368-1828.

SURFBOARD: CON C.C. RIDER, '96" removable speed skeg, clear finish, over lapped rails. Call: 998-4377.

HELP WANTED

BEAUTY ADVISORS for Kosmetic Co., Excellent earnings, no experience needed, training free. Work your own hours. Call 789-6163.

LIFEGUARDS for private swim club. May 30-September 1. Salary \$650-\$975 depending on experience and job requirements. Contact: Crestmoor Swim Club, P.O. Box 3144, Wilmington, Delaware 19804 Attention: Mr. Boyer.

LOST & FOUND

LOST-a silver Bulova watch with black velvet band. If found call 200 Squire 737-9700-very important-a reward is offered.

MISCELLANEOUS

UNIVERSITY OF CALIFORNIA, BERKELEY CAMPUS: unique lecture notes. Hundreds of courses, taken directly in class by professionals from world-famous teachers. \$1-\$4. Send for free catalog. FVBATE LECTURE NOTES.

Dept. X6, 2440 Bancroft Way, Berkeley, Calif. 94704.

GAY 90's DANCE in West Dining Hall on April 11 from 8:30 to midnight. W.C. Field flicks shown during band breaks. Admission 75 cents with ID. Sponsored by WCCC.

THESES, dissertations, etc. expertly typed by faculty wife on IBM Selectric. Very reas. rates, pick-up and delivery on campus. Call 328-8078 or 738-2370.

TYPING--IBM Selectric Typewriter. Contact Mrs. Johnson or Mrs. Thompson, Physics Department. Ext. 2661. Evenings call 737-4945 or 368-0926.

TYPING done in Newark Themes, Term papers, Reports etc. IBM Electric. Call 368-8082 after 6 p.m.

MOTORCYCLES

SCOOTER FOR SALE: 1965 VESPA G.L. 150 cc. Good condition Contact Jim Romberger at 368-7740.

'64 HONDA SUPER HAWK 305 cc. Excellent mechanical condition. Need minor body work \$225 after 6 weekdays, 368-1946.

1967 HARLEY DAVIDSON 250 cc. sprint in mint condition, new tires. Cover, and helmet included. Phone 737-9761 and ask for Pete in Room 300.

1967 HONDA 305 cc. Scrambler Black- and silver excellent condition only 4000 miles plus helmet and visor. Call 737-9885 ask for Phil, Room 302.

'68 HONDA "SCRAMBLER 90" Candy apple red. Perfect cond. Not a scratch on it. Must Sell! Contact Steve, 115 Russell A, 737-9709.

'67 HONDA 305 Scrambler \$500 at 335-5570, or ask for Joanne at 737-9702.

BRIDGESTONE 90 1964

Good condition only 2000 miles. Need cash. Best offer. Call 737-9924. Ask for Ray.

WANTED

TWO PEOPLE TO SHARE 2 bedroom apartment with 2 others for the summer. Apartment includes wall to wall carpeting, air-conditioning, dishwasher, disposal, den. Apartment is already fully furnished. Call 368-9969.

GRAD OR UNDERGRAD STUDENT from July 7th-July 29th to care for three children (ages 5, 8, & 10) 2 cats, & house, in Arden while parents vacation. Swimming pool within walking distance. Salary \$12 per day plus board. Call 475-8325 bet. 3 p.m. and 11 p.m.

Trabant...

(Continued from Page 3)

Academy's report can better be brought about through a voluntary approach."

The statement emphasized cooperation among the colleges. "One of its (the Academy) most important objectives is to achieve greater cooperation among all of the state's tax-supported institutions of higher education and to avoid costly duplication of programs and facilities."

MONARCH NOTES

- Books
- School Supplies
- Office Supplies
- Wedding Invitations On Short Notice
- School And Business Stationery

NEWARK STATIONERS

44 EAST MAIN STREET

368-4032

CREEK SALE

at *S & N Cycles*

1110 Ogletown Rd.

(Near the Newark Traffic Circle)

All Models Come With

'69 Titles & Full Warranties

- "180" streets - electric start \$500
- "180" street scramblers \$540
- "250" Catalinas \$550
- "250" Big Bear Scrambler \$575
- Cross County "305" \$610
- "350" Grand Prix \$675

Some Are Demonstrators

Some Are Left-Overs

25% Discount On All Helmets

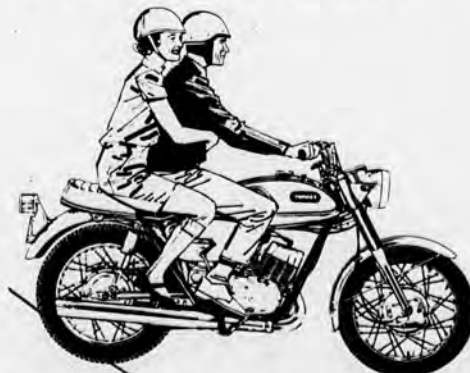
Bought With New Machines

LIMITED QUANTITIES

First Come-First Serve

Cash Only

See JERRY NAUGHTON



Ride To The CREEK In Style

GREEK NEWS BRIEFS

Three weeks ago, the Central Fraternity System Government officially replaced the Intrafraternity Council Interim Government at a banquet at the Horseless Carriage.

Outgoing IFC president Glenn Paulsen, SN, was presented a plaque and a gold cigarette lighter in appreciation of a job well done.

Three awards were also given, foremost of which was the presentation of the Faculty-Student Fraternity Man of the Year Award to T. Albert Nickles, assistant dean of men. Dean Nickles has done an outstanding job in helping with the development of the new CFSG and a housing program for fraternities.

Also, Sigma Phi Epsilon received the Scholarship Award, while Jerry Bilton, AEPi, received a citation for his contribution to the fraternity system.

Dean Nickles was also honored recently at a banquet commemorating the 60th anniversary of the founding of Lambda Chi Alpha National Fraternity.

For his outstanding fraternal spirit and service at the university, he was inducted into the chapter's Hall of Fame.

Tonight, fraternity officers and committee chairmen will get together with their sorority counterparts for FSG-ISC Symposium on the duties of these leaders, plus a discussion of organizational problems.

At 9 p.m., all sorority women and fraternity men will get acquainted in the Rodney Room of the Student Center. Can't hate that.

Nick Delcampo, SPE, had been busy organizing this year's Greek Games, to be held on April 27. There will be at least one change from last year—the Volkswagon carry has been changed to a Volkswagon push, for safety reasons. Each house will have a five-man team with a driver, and the fastest time will win.

Three other new events are possibilities at this point: a 20-foot rope climb, a greased pole climb, and a bicycle race. Also, the sororities are working up some events of their own.

A leadership workshop is currently being planned for

the weekend of the 19th and 20th. All officers and committee chairmen should keep these dates open.

Phi Kappa Tau sends congratulations to Brothers Mike Boyle and Drexel Morgan for their outstanding achievements. Boyle was named to the National College Register, a collegiate Who's Who. He has served as President of Phi Tau and Vice President of the IEEE, has been elected to Eta Kappa Nu and Omicron Delta Kappa honoraries, and is a member of the Engineering Council.

Morgan was recently awarded his flight wings by the department of Military Science. The wings were pinned on by visiting Major General Burba, assistant first army commandant.

As a special project, pledges from Sigma Nu collected donations for the National Hemophilia Society recently.

The Hemophilia Society contacted former Commander Don Goodwin and asked if the fraternity could make a donation. Goodwin volunteered to have the worms cover the Newark

area, seeking funds for the drive.

Since all donations are received in sealed envelopes, the success of the drive can not yet be estimated.

Kappa Alpha wishes best of luck to brother Paul Seitz in his bid for treasurer of the class of 1971 in the upcoming elections.

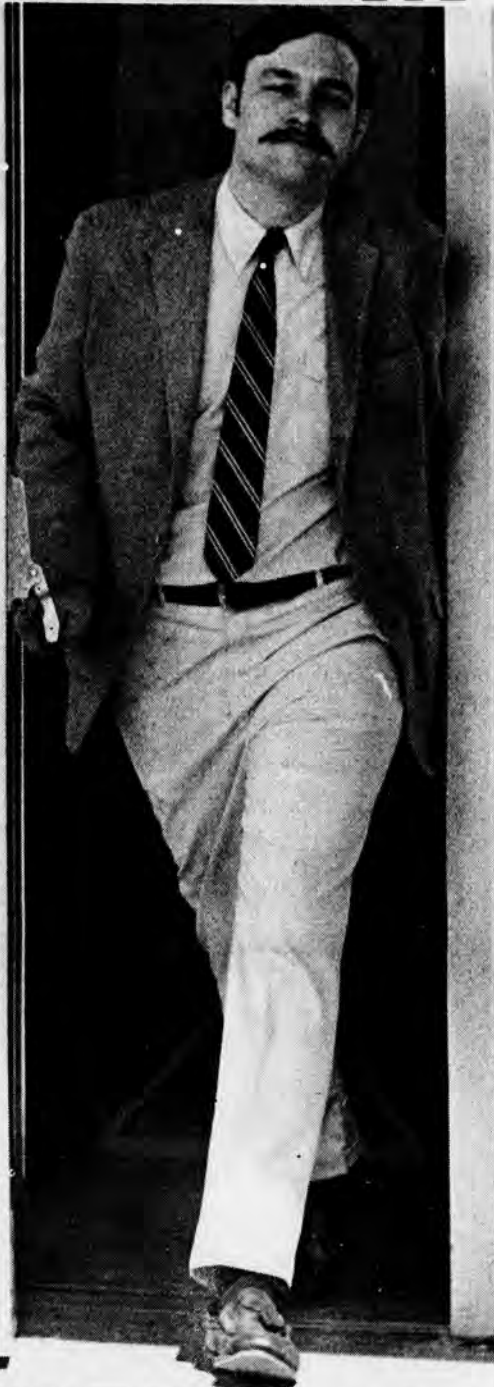
Congratulations are in order for the SPE basketball team which placed first in the Pennsylvania Mu Chapter Basketball Tournament, held at Temple. Other teams participating in the tourney included Lehigh, Rutgers, Muhlenberg, Philadelphia Textile and Temple.

The squad copped four of the eight awards for their outstanding team play.

The Thetes report that Brother Phil Yeany has been elected an SGA senator, even though elections are not until next week. Since he and "Stretch" Levis, KA, are the only candidates from the CFSG district, and since two are to be elected under the new SGA constitution, both are in. Congratulations are in order for both.

(Continued to Page 15)

ROB GRAHAM



EXPERIENCE ACTION



Rob meets with SGA treasurer Dick Jolly

SGA PRESIDENT

ELK THEATRE

ELKTON, MARYLAND

Two Shows Mon. thru Fri. Sat. cont'ous shows from 1 p.m. 6:45 p.m. and 9 p.m. Sun. cont'ous shows from 2 p.m.

Always Comfortable Air Conditioned Summer and Winter

NOW THRU APRIL 15th
Sat. and Sun. from 5:00 P.M.

ACADEMY AWARD WINNER

JOSEPH E. LEVINE
PRESENTS
MIKE NICHOLS
LAWRENCE TURMAN

BEST DIRECTOR
—MIKE NICHOLS



THE
GRADUATE

PANAVISION
TECHNICOLOR
AN EMBASSY PICTURES RELEASE



YOUR
NEWARK
KEEPSAKE
DEALER:

TRADITIONAL
Keepsake
WEDDING RINGS

MERVIN S. DALE'S

59 E. MAIN ST.

**Joni Mitchell
in concert**

A Larry Magid
Presentation

plus **JERRY JEFF WALKER**

Academy of Music
Sunday, April 20th
One Show Only: 8:00 PM

\$3 \$4 \$5

Advanced Tickets and Mail Orders at
Academy of Music Box Office, Broad
and Locust Sts., Phila., Pa. 19102
Mads. Ardmore, Pa.



THE FREEPORT INN will never be the same after this year's student tour invaded the Bahamas. Imagine green dye in the pool!

Freeport Fling

Beware Of The Bahamas' Lemons

By LINDA ZIMMERMAN

This spring vacation a group of university students learned a lesson the expensive way.

As "participants" in the Student Tour to the Bahamas, many students, having spent \$185, felt they had been taken when the accommodations did not measure up to their expectations.

They discovered that colored advertising can make a lemon look like a rose.

TRAVELING

Although, in retrospect the trip was a good time, during the actual vacation some disappointment was apparent.

The tour seemed jinxed from the start when the departing flight was delayed four hours. Everyone began wondering if there actually was a Saturn airlines!

Once on the island, it took an hour to get through immigration.

ARRIVING

The group then arrived at the Freeport Inn where they

waited two hours before receiving a room assignment. Many students had planned on rooms with kitchenettes, but instead found they were lucky to get a room at all. The quota of four to a room was in many instances extended to five or six making quarters quite cozy, to say the least.

The Freeport Inn turned out to be seven miles from the beach. Fortunately, hitching was permitted, and was the main means of travel for the group, even on dates!

THE INN

The Inn itself could have passed for the Waldorf, if you had a good imagination. Otherwise, would you believe the Travel Lodge?

Maintenance was not on the job, so the hotel grounds and swimming area were not kept clean. After a group from Massachusetts threw green dye in the pool, it was drained and remained empty for the remainder of the week.

The rooms were fine except they were seldom adequately supplied with clean linens or towels. Wash cloths were non-existent.

ACCOMMODATIONS

There was no room service

and the switchboard operator must have slept on the job, as it was often impossible to get calls placed.

Every night drinks were on the house at the Happy Hour. The liquor used, however, was less expensive than the mixer. Therefore the drinks were usually very potent and quickly deadened the senses.

Possibly this was to your advantage, as then you might overlook the fact that the band's repertoire consisted of ten songs and furthermore, there was barely room to dance.

THE MORAL

Despite these inconveniences the group made light of them and managed to enjoy themselves.

However, to all those planning to travel next Spring, I'd suggest you investigate your prospective destination to get the most for your money instead of making best of the least.

The group discovered that other Student Tours to the Bahamas, for comparable prices, stayed at much nicer hotels located on the beach too. So watch out for lemons!

Soprano To Sing In Mitchell Hall

One of the nation's most well known concert singers will perform for the final program of the University Artists Series at 8:15 p.m., Monday in Mitchell Hall.

Helen Boatwright, American soprano, will sing a far-ranging program that will include the music of Mozart, Berlioz, Puccini, and Charles Ives. She will be accompanied by William Dale at the piano.

At home in all of the

vocal literature, Miss Boatwright's broad repertoire ranges from Scarlatti through Bach and Debussy to such contemporary composers as Norman Lockwood.

She has performed for the Crown Prince of Japan, for Queen Elizabeth, the Queen Mother, and for former President and Mrs. Kennedy at the White House.

She has also been guest artist with some of the nation's leading conductors, including Leopold Stokowski, George Szell, Paul Hindemith, and Eric Leinsdorf.

Miss Boatwright came from a musical family and studied at Oberlin College, the Cleveland Institute of Music, and with private teachers in New York City.

Miss Boatwright, a Wisconsin native, will begin her concert Monday with a Mozart cantata, "Die Ihr des unermesslichen Weltalls Schöpfer ehrt."

The program will close with the "Vocalize" by Rachmaninoff and the ever popular "Un Bel Di Vedremo" from Puccini's "Madame Butterfly."

Carolina Senator To Speak

It was announced today that Sen. Ernest F. Hollings (D-South Carolina) will speak at the university Wednesday on "Hunger in America." The speech is being sponsored by the Food Business Institute.

Hollings, of Charleston, S.C., received his LL.B. from the University of South Carolina and did his undergraduate work at The Citadel.

He was chosen one of the Ten Most Outstanding Young Men in 1954 by the Junior Chamber of Commerce.

He served as Governor of South Carolina from 1958 to 1963. He served on the Hoover Commission in 1955 and was elected in 1966 to fill the unexpired term of Sen. Olin D. Johnston. He was reelected in 1968.

Hollings is a member of the Senate Agriculture and Forestry Committee, Commerce Committee, and Post Office and Civil Service Committee.

Sen. George McGovern was expected to attend, however according to sources in Washington his schedule would not allow him to appear.



HELEN BOATWRIGHT

Tickets for the performance are available at a student rate to pupils in public and private schools. Regular admission is \$3.50. Ticket information can be obtained from Artists Series, 108 Mitchell Hall.

Blow Yourself UP Go To Pieces PHOTO JIGSAW PUZZLE

1 ft. x 1 1/2 ft.
Send any Black & White or color photo. We will send you a 1 ft. x 1 1/2 ft. Photo Jigsaw puzzle. Mailed in 40 easy-to-assemble pieces. Great gift or gag.

A \$25 value for \$4.50

Photo Dart Board 1 ft diameter \$4.50
Get your own Personalized Photo Dart Board. Send any black and white or color photo. Mounted on genuine cork and comes with 3 precision darts.

Your original photo returned undamaged. Add 50c postage and handling for EACH item. Send check or M.O. (No C.O.D.) to: PHOTO JIGSAW, Dept. C 210 East 23 St., New York, NY 10010 Dealer inquiries invited

Cinema Center
NEWARK SHOPPING CENTER
NEWARK, DEL.
TEL. 737-3866
ACRES OF FREE PARKING

HELD OVER! 4TH ORBITAL WEEK
2 COMPLETE SHOWS NIGHTLY
7 & 9:20 P.M.

SUNDAY - CONTINUOUS FROM 2 P.M.
SHOWS AT 2:00-4:30-7:00-9:20 P.M.

NOMINATED FOR 4 ACADEMY AWARDS!

"One of the year's best pictures!"
— N.Y. Times — Saturday Review — Cue Magazine — Newsday

MGM PRESENTS STANLEY KUBRICK PRODUCTION
2001
a space odyssey
SUPER PANAVISION — METROCOLOR

corner house

Save Money and Closet Space
with our Interchangeables!

Everything Color Matched!

From coats to culottes we fit 6 to 16's 4's & 18's in selected items

We're not expensive like the others... 'cause we style it we sew it we sell it

Wilmington, Del.
Milltown Shopping Center
Milltown & Limestone Road
Open daily 10:00 to 6:00
Wed. & Fri. eves 'til 9:00
Saturday 9:30 to 5:30
Phone (302) 998-0494
Mail orders filled Add 50c postage

Target Date For Parts Of Newark Beltway Set

The first of many steps toward completion of the proposed Newark Beltway was taken Tuesday night when State Highway Department representatives outlined initial plans for the project.

Present schedules call for partial completion of the project by 1975. State Rep. John G.S. Billingsley of

Newark, feels that the plan could be pushed up two or three years.

The proposed route would run from east of South Chapel Sts., from south to north, circling the city, to a point east of New London Ave.

The road would cut through the university farm area in a continuation of Chestnut Hill Road. A major cloverleaf and diamond intersection, and an overpass are planned for S. College Ave.

According to Billingsley this route is the most economical and results in the least property damage. The consensus of the group called for co-operation in hastening the completion of the project.



BLUE HERON OVER THE EASTERN SHORE . . . One of the pieces of Byron Shurtleff's photo essay "The Whispering Shore" is this shot of a young blue heron in flight over the quiet water of the Eastern Shore. Shurtleff, university art professor, will show 100 photographs of his coastal meanderings from April 14 through May 10 in the H. Fletcher Brown Wing of the Delaware Art Center in Wilmington.

Audition Tonight

Auditions for the second annual Spring Festival of Talent will be held tonight at 7 p.m. in the M-V Room of the Student Center. All types of talent are encouraged in acts of up to five minutes. The Talent Show will be held on April 26.

U of D Coed To Compete

Pat Phile, HEO, has been selected as one of the most outstanding college girls in the state of Delaware. She has earned a trip to Palm Beach where she will compete for the title of "National College Queen."

Based on her scholastic accomplishments and leadership in campus

activities Miss Phile was nominated by AWS and then chosen in New York to represent Delaware at the 15th Annual National College Queen Pageant, which is held to select and honor the nation's most outstanding college girl. There is more than \$5,000 in prizes including a trip to Europe

and a Pontiac Firebird convertible.

She will leave today for 10 days in Palm Beach, Fla. to participate in a series of seminars and competitive events on a wide range of subjects including education, campus life, current events, career goals, etc. Miss Phile will be scored by 40 national judges on her knowledge, poise, academic achievements, personality, and her record of service to her college.

The entire pageant will be filmed for television and the new "National College Queen" will be crowned on April 20.



READING MINUTES is only one of Pat Phile's many responsibilities. Student leadership helped Pat become Delaware's representative to the National College Queen Contest.

Staff Photo by Sing Lee

GRE Tests To Be Given Next Week

Students who plan to complete degree requirements in 1969, or by February 1970, must participate in the Graduate Record Institutional Testing Program next week.

Students may pick up a memorandum concerning the tests at the Student Counseling Services, Room 123, Alison Hall. Prior registration is not necessary.

GRE Area Tests will be administered Monday at 1 p.m. at Carpenter Sports Building. Advanced Tests are scheduled for Tuesday at 1 p.m. at Carpenter Sports Building. Make-up tests will be held Saturday, April 19, at 8:30 a.m. and 1 p.m.

Education majors report to Rooms 121 and 122 Memorial Hall. All others report to Room 103 Recitation Hall.

No other make-up will be scheduled. Students should bring two No. 2 pencils and their Social Security number.

Prof. Glenn Advocates "Color-Blind" Society

As a solution to the present racial crisis in America, only a "color-blind achievement-oriented society" will work, according to Prof. Edmund S. Glenn.

Prof. Glenn, who is coordinating a new program of intercultural communications at the university, presented this conclusion in his discussion of "Miscommunication Between the Races" Wednesday evening in a lecture sponsored by the Graduate Student Association.

In his analysis of racial

prejudice, Glenn used a sociological-anthropological framework; to explain prejudice, he said, one must examine the basic patterns of thought of man.

RACISM—WORLD WIDE

Racism, the inhumanity of man towards men, he said, is not a uniquely American phenomenon, but is world-wide. However, he added, although prejudice is geographically universal, this is not an excuse for it in the U.S.

Glenn cited examples of prejudice around the world in discussing the role of identity in prejudice, beginning with primitive man, where a man is what he is born (ascriptive) and where a stranger is feared, hated, or ignored.

MEANING OF RACISM

In relating the framework to prejudice in America, Glenn stated that racism now means "you want me to become like you" rather than "whatever you do, you can't be like me."

This change in attitudes toward Blacks began after the passage of Civil Rights Act, according to Glenn.

This semantic confusion of the meaning of racism makes solution of the problem even more difficult, Glenn added.

Furthermore, the present dialogue between Blacks and Whites is not merely between the races but among the ascription-and achievement-minded of each race.

INDIVIDUAL EFFORT

The dominant culture of the U.S. is middle-class oriented, but should not be called "white," Glenn believes; the values are primarily those of achievement.

He added that "separate but equal" does not work; a color-blind achievement-oriented society is needed, but can not come immediately.

"Halfway-houses" for building understanding are

(Continued to Page 10)

Cultural Resources To Be Expanded

Russell W. Peterson, governor of Delaware, announced the formation of a Delaware State Arts Council last week.

The council's basic duty will be to "promote and encourage public interest in the cultural heritage of our state and to expand the state's cultural resources, and to promote public education in all fields of artistic and cultural activities," the Governor said in the executive order which established it.

Surveying cultural needs and making recommendations to the Governor concerning legislation establishing a permanent Delaware State Arts Council will also be duties of the council.

Appointed by Peterson, the council will consist of at least 15 members representing all fields of the performing and fine arts. They will serve three-year terms.

Mrs. C. Douglass Buck, Jr., a member of the Women's Committee of the Wilmington Society of Fine Arts and a contributing member of the Women's Committee of the

Philadelphia Orchestra, will serve as chairman.

The executive order authorizes the council to accept gifts and contributions and to receive and disburse any funds made available by the National Endowment for the Arts.

Fraternities, Sororities Get Together

The Inter-Sorority Council and CFSG are sponsoring a symposium tonight in the Rodney Room at 9 p.m.

Officers of five sororities will meet with fraternity members to discuss duties and organizational problems.

Speakers will include Stuart Sharkey, Director of Residence, Dean Ross Ann Jenny and Dean T. Albert Nichols. All fraternity and sorority members are invited to attend.

Both the ISC and the IFC are working to develop a strong Greek system on campus and recognize the necessity of working together toward a common goal.



VINCENT JAMES ABATO

Concert To Feature Vincent James Abato

The University of Delaware Symphonic Band will be joined by guest soloist Vincent James Abato, nationally known clarinetist and saxophonist, in its second formal concert of the year at 8:15 p.m., Apr. 27 in Mitchell Hall on the campus.

Abato will perform a transcription of the Tchaikovsky Violin Concerto with the band. J. Robert King, professor of instrumental music at the University of Delaware, will direct the symphonic group.

CHAMBER SINGERS

Joining the band in this performance will be the University Chamber Singers, under the direction of Joseph Huszti, assistant professor of choral music. The Chamber Singers will perform two works by the 18th century American composer, William Billings and the band will play a twentieth century treatment of these same two works by William Schuman, director of the Lincoln Center of the Performing Arts.

The program will also feature a performance of "A Quartal Jaunt" by Dr. Robert Hogenson, assistant professor of music. It will be the premiere performance of the work in the Eastern United States.

NATIONALLY KNOWN

Soloist Abato ranks among the foremost reed instrument virtuosos. He is one of the few artists in history to achieve a reputation of eminence on three major instruments - saxophone,

clarinet and bass clarinet.

Abato received his early musical training at the Peabody Conservatory of Music in Baltimore. He completed his studies at the Juilliard School of Music in New York City where he later became a member of the faculty.

Abato's professional experience includes solo appearances with many of the nation's leading symphony orchestras under such distinguished conductors as Arthur Rodzinski, Leopold Stokowski, William Steinberg, Howard Barlow and Percy Faith.

Delaware Higher Education

Senator Conner To Speak

A lecture on "Higher Education in the State of Delaware" will be high on tonight's list of activities at the Phoenix.

State Senator Louise Conner will speak on the structure of higher education at the university. Also speaking will be the chairman of the State's Higher Education Advisory Commission, Mrs. Kendall Wilson.

This commission has urged the coalition of all state higher educational facilities including Delaware Technical and Community College and Delaware State into one state university. "The only obstacle to this sort of coalition," stated Mrs. Wilson, "is the Board of Trustees of the university of Delaware, who, with three exceptions, are all white, all male, and all over fifty-five."

Following Mrs. Wilson, Larry Shapiro, of the Delaware String Quartet, will present a program on

ACE Impact Studies Indicate Collegiate Educational Trends

The American Council on Education Information Form has been administered to entering freshmen both at Delaware and nationally. Some trends here are apparent as revealed by changes in response patterns from 1966 to 1968.

More students at Delaware are entering college directly from high school; nationally this trend is not apparent. The academic standards of the entering class, based on self-reported high school grades have gone up slightly at Delaware, but not nationally. The ratio of men to women at this University is decreasing and in this year's freshman class stands at 53:47.

An increasingly higher percentage of men plan to take a doctor's degree. Almost one-third of Delaware men who entered this fall plan this attainment compared to 26% at other like institutions. Those undecided about a career choice have increased sharply both here and nationally and comprised 10% of the Delaware first year class.

The educational level of fathers of entering students has increased, more rapidly at Delaware than nationally, but mothers has not. This reflects a trend pointed out by Lawrence Mayer in the January Fortune that the educational gap between men and women has actually widened since 1947.

Increasingly more students are apprehensive about financing their college education and a higher percentage report their major

source of financial support is from a scholarship; 19% in 1968.

Each successive year there has been a tendency for freshmen to mark fewer of the eighteen objectives or life goals listed in the questionnaire as "essential" or "very important." Not a single objective has become more important and the two which have declined most markedly in popularity are: Helping others in difficulty, Being successful in a business of my own.

External criteria of success, such as recognition from peers and wealth, seem to be becoming of less importance to students and the average freshman also is less eager to excel in such areas as athletics, finance, administration, theoretical science or even community

endorsing the importance of keeping up with political affairs in election year 1968.

Most college freshmen feel "Developing a meaningful philosophy of life" is the most important life goal but fewer this year than in 1967 endorsed this objective, 81% vs. 83%.

Results of the ACE questionnaire indicate that there is a trend away from early marriages. While 40% of the 1966 freshmen at Delaware believe chances were very good that they would get married while in college or within a year after college only 30% of this year's class shared this belief. Another trend revealed by the ACE data both locally and nationally, is away from joining a social fraternity, sorority or club.

London Trip

Seats are still available for the university's charter flight from Philadelphia to London July 28 and returning August 28. Round trip fare for students and staff is \$265 with last payment due June 1. Details are available from the Student Center Director in Room 100.

leadership than he was three years ago. The items dealing with the need for artistic self-expression have remained relatively constant while objectives involving participation in the community have declined.

At Delaware there was a rise in the percentage

Students' replies to questions concerning their activities during their last year in high school seem to indicate a growing maturity each successive year. There has been a greater participation in student elections, homework has more often been completed on time and fewer students arrange dates for other students. Over the past two years there has been a tendency for more students to argue with the teacher and for fewer to ask his advice.

These signs of increasing maturity are accompanied by more students feeling that faculty promotions should be based partly on student evaluations, more believing all scientific findings should be published, and fewer who believe the college has the right to ban speakers with extreme views. Fewer students think their beliefs are similar to others.

There had also been a drop in those who believe the disadvantaged should be given preferential treatment in college, from 40% in 1967 to 37% at Delaware this fall. All of these trends are true nationally, also, but the belief that the individual cannot change society, which showed a drop from 32% to 31% nationally, at Delaware was endorsed by 4% more in 1968 (38%), indicated a more realistic point of view at this University than among freshmen at public universities generally.

Inauguration...

(Continued from Page 1)

Pat Phile, and George Uetz on Curriculum; Linda Good, Gail Parassio, and Leo Treadway on Teaching and Learning; Carol Hutton, Bob Rafal, and Mike Sherman on Campus Life; and Dick Jolly, Durand Kinloch, and Linda Pesce on Campus and Community.

Faculty chairman for the panels include Prof. Murray, Dr. Fraser Russell, Dr. Frank Dille, Dr. David Norton, and Dr. George Windell.

"Classical Music Throughout the Ages."

A final addition to the program will be the

Psychology Dept. To Offer Specialized Tutoring Services

Psi Chi, psychology, honorary society, is sponsoring the extension of the university Tutoring Service to freshman psychology courses.

The move was initiated by Susan Dunlop and Susan

Tutoring Service

University-sponsored tutoring service for freshmen-level courses in science, English, mathematics, history and languages will be offered this semester.

There is a \$2 fee, which will be paid by the university if the tutoree is unable to pay. Interested students may contact department supervisors concerning the tutorial program.

announcement of the candidates the Phoenix House Committee has chosen to endorse in the SGA elections.

Luek, psychology graduate students, by recruiting tutors from among the members of the honorary group.

Dr. George Hauty, chairman of the department, appointed Dr. Martin Chermers, assistant professor of psychology, as supervisor of tutoring in the department. Dr. Chermers will assign freshman students who need tutoring to the Psi Chi members.

University Tutoring Service will pay all or parts of the cost of students receiving financial aid. Other departments offering this kind of service are the Biology, Chemistry, English, History, Languages and Literature and the Mathematics departments.

Glenn...

(Continued from Page 9)
needed for those moving from an ascriptive to an achievement society. One of Glenn's final and most significant remarks was that we must "move ahead as individuals."

Graham, Lee, Witham Vie For SGA Prexy

GALE CATLEY, EDO

QUALIFICATIONS:
1. Central Board Self-regulation of Hours committee.
2. Junior Counselor.
3. Blue Hen.

PLATFORM: I would like the opportunity to continue to work for a university community that not only RESPECTS its students, but also demands their RESPECT because it is a REFLECTION OF STUDENT IDEAS. The administration is ready to listen to us, but we must be ready with answers. I am willing to listen to YOUR ideas, to formulate them, and to work for administration cooperation. The STUDENT RIGHTS STATEMENT, the OPEN DORM PROGRAM, the WOMEN'S HOUR PROPOSAL, and a NEW CONSTITUTION are only a beginning to the possibilities that are open to student development. I ask for your vote in the election, an opportunity for me to work for RESPONSIBLE STUDENT INFLUENCE.



GALE CATLEY
SGA Vice-President



CAROL HUTTON
AWS President

QUALIFICATIONS:
1. SGA Senator.
2. Public Relations Coordinator-AWS.
3. Co-editor - "The Association."

PLATFORM: The Association of Women Students is deeply concerned about the ever changing role of women, not only on the college campus but throughout America. This is the age of the person and being a woman is an aspect of being a person. To meet the needs women are now expressing during this period of change, AWS must re-evaluate its purpose and formulate activities to meet these needs. There are three areas in which AWS can best serve the women on campus: Judiciary-formulating policy under which women live; Programming--sponsoring activities relevant to the times; Co-ordinating Housing Units-increasing the effectiveness of dorm government. These three functions describe AWS and how it can and should work for you. With these ideas in mind, I see the role of AWS on our campus shifting from a perpetuator of traditions to an implementator of programs reflecting the ideas and thoughts of today.

LINDA GOOD, NUO

QUALIFICATIONS:
1. One year's experience as a District Senator.
2. Two years' prior service with Student Government at another college.
3. Broad knowledge of the Student's Rights Statement, the new SGA Constitution, and the Judicial Reform Proposal.

PLATFORM: We as students are assuming increasing responsibility for our own social and academic affairs. I am running for vice-president because I believe in student power as a means of actively educating ourselves for life. I believe in our rights, in our capacity for concern, and in our ability to exercise reasonable judgment. I am offering my energy and experience to help make the strength of SGA equal to her task in the year ahead.



LINDA GOOD
SGA Vice-President

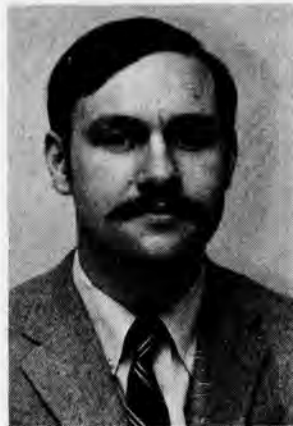


JERRY VEST
AWS President

QUALIFICATIONS:
1. President of Russell D (V-Pres. of Russell D/E).
2. On Mr. Sharkey's Residence Hall Advisory Committee.
3. Revolving Loan Fund Committee.

PLATFORM: The new outlook for AWS of 1970 is a new structure for AWS. The restructuring will be on three levels: (1) district, where house presidents will meet to cope with problems and plan activities for their area of campus, (2) AWS, where topics will be discussed concerning women, where challenges will be offered to the women, and where sororities will be incorporated for the first time, and (3) AWS-MRHA, where because of the great potential of such a group, large scale symposiums can be planned, speaker series sponsored, and possibly policy initiated because of the large group it represents.

Levels one and two will be employed no matter who is elected. I would like to emphasize the importance of the third. AWS and MRHA have gone to each other for help before, and successfully. Because the campus and specifically dorm activities are becoming more coed, there is a need to carry through the idea of the university community together. An AWS-MRHA organization would have the finances and the leadership potential to challenge the student. AWS-MRHA is my main objective.



ROB GRAHAM
SGA President

QUALIFICATIONS:
1. Chairman, Seminars Committee, SGA Cabinet 1967-68.
2. Commuter Senator, SGA, 1968-69.
3. Chairman, Constitution Revision Committee.
4. Member of Symposium on Governance for the Inauguration of President E.A. Trabant.

PLATFORM:
SGA this year has taken several giant steps toward becoming the real self-governing body it can and should be.

With the Statement on Students' Rights and Responsibilities, the Judicial Reform Proposal, and the revised Constitution and By-Laws, the groundwork has been laid for regulation by students of rules governing their lives at the University. This places the full load of implementation on the shoulders of next year's Senate and Judiciary. It also requires of the President of SGA a full working knowledge of the machinery of student government, and a willingness on his part to provide the progressive leadership the student body will need if student government is to be a success.

Although a commuter, I have gained, through friendships and through working in the Senate, a thorough knowledge of the problems of dormitory and fraternity life, as well as an appreciation of the special problems of off-campus housing. As a senator, and as chairman of the Constitution Revision Committee, I have gained the type of experience necessary for the presidency of SGA, a knowledge of workings of student government and its interactions with other segments of the university community. Working with the Constitution and By-Laws through all phases of their development, having served on a number of special committees, and having participated in all of the decisions made by the Senate, I feel well qualified to serve as President. Your vote can and will make the difference.



MIKE SHERMAN
MRHA President-Unopposed



STEVE LEE
SGA President

QUALIFICATIONS:
1. SDS member.
2. Former SGA senator on Student Power ticket.
3. Radical Apocalyptic.

PLATFORM: The SDS ticket offers a clear alternative. We feel the campus is ready for larger things than the student rights-student responsibilities game. The university is an accomplice to the militarism and racism of the power structure. The greatest sins of the university are not perpetrated on its students.

Universities hide behind the rhetoric of neutrality. The reality is they not only serve the interests of, but are controlled by the economic forces which run the country. College trained bureaucrats are needed to perpetuate the system and college research needed to extend its control. Dupont control of Delaware is exercised directly through the Board of Trustees and allocation of endowment funds.

The university is deeply complicit with the militarism that is repressing social revolution throughout the third world. Campus facilities are given to ROTC which supplies officers to kill and die in Vietnam. The engineering department is doing research for the defense department (project Themis), and the CIA and Dow recruit in Raub Hall.

Higher education in Delaware is racist. The small minority of blacks on campus (73 out of 7000) and the blatantly inferior conditions of Delaware State are clear examples.

The focus of our platform and analysis are the following demands:

1. sever all relations with the industrial-military complex including ROTC, defense contracts, and on-campus recruiting (CIA, Dow, Hercules, etc.).
2. no degree for Terry.
3. open admissions for ghetto blacks.
4. sever all controlling relations with Dupont.
5. guarantee right-to-strike for university workers.
6. Newark community control of university expansion.



PEGGY BEDINGFIELD
SGA Secretary-Unopposed



BILL WITHAM
SGA President

QUALIFICATIONS:
1. President of class of 1970.
2. SGA Senator.
3. Chairman of Inter-Class Executive Council.
4. IFC representative.
5. Member of Sigma Phi Epsilon Fraternity.

PLATFORM: The achievements of the Student Government Association this year have been momentous. These milestones include the passing of the Students' Rights Statement, judicial reorganization, better communication and cooperation with the faculty and administration, more effective student representation on University committees, and the passage of the new SGA Constitution.

The implementation and extension of these successes are a major job of student government next year and can be accomplished only with the election of responsible SGA representatives and through positive leadership.

The principles of the Students' Rights Statement must be extended to develop a judicial system which sets standards for student conduct and permits students to participate in the governing of their lives.

An atmosphere of free expression in which students can voice opinions in a responsible manner must be felt. Such an atmosphere would facilitate the development of an Academic Affairs Commission from which course and teaching evaluation can be effectively established and coordinated with the faculty.

The mature college student, whether he is a commuter, apartment dweller, or dorm dweller, must be permitted to grow and educate himself in the student life arena. Proposals such as the open dorm policy and the elimination of women's hours should be studied carefully and passed.

To carry out these proposals a well-organized student government structure must coordinate the activities of various subordinate student organizations. I offer my candidacy to ensure that the implementation of these and growth of future proposals will continue with positive leadership and direction.



MARK McCLAFFERTY
SGA Treasurer-Unopposed

Candidates Run Hard At-Large



Evelyn Alexander

Mary Hastings



Sandy Sachs

Mary Warner

Women Senators-At-Large

EVELYN ALEXANDER, ASO

QUALIFICATIONS:

1. Representative to freshman, sophomore and junior class councils.

PLATFORM: As senator, I will work to make the SGA a more integral part of the campus. I would like to see a better communication of its views and activities among the students. In this way I hope the SGA will become a stronger, more representative governing body for the students.

MARY M. HASTINGS, HEI

QUALIFICATIONS:

1. Junior Counselor.
2. Nominated for AWS Outstanding Woman Student Scholarship, Spring 1968.
3. AWS Freshman Women's Council.

PLATFORM: A positive campaign, positive effort, and positive continuation of the advances made by this year's SGA are my objectives in attaining the office of Senator-at-Large. Delaware is growing into a dynamic entity in which I desire to become involved in its formation and preservation.

SANDY SACHS, ASI

QUALIFICATIONS:

1. Member of sophomore council.
2. Served as dormitory secretary.
3. Member of marching and concert bands.

PLATFORM: Awareness means reaching every student. Community means cooperation. What can WE do to make our social and cultural activities up to date with our latest legislature (open dorms and student rights)? Reach EVERY student for his ideas and cooperate to carry out these new proposals with greater enthusiasm and involvement.

MARY RUTH WARNER, EDO

QUALIFICATIONS:

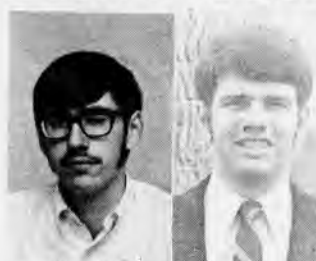
1. Member of President's Interim Cabinet.
2. Member of Advising Committee on Policies... affecting Blacks and other minority group students.
3. President of the Black Students Union.

PLATFORM: I believe that the role of black and white students is to build strong educational institutions that service the needs of the academic and local communities, that are actively involved in the struggle to liberate mankind from racist, materialistic, industrial oppression, and engages in building a strong nation.



Stan Glowiak

Paul Harwitz



Kermit Leibensperger

Anthony Simeone



Cam Yorkston

Herb Conner



"Stretch" Levis

Phil Yeany

Men Senators-At-Large

STANLEY F. GLOWIAK, ASO

QUALIFICATIONS:

1. Alpha Tau Omega Fraternity.
2. Chairman of Students for Kennedy.
3. Youth for McCarthy.

PLATFORM: What does the SGA mean to you? The most serious problem the SGA faces is lack of student participation. What are needed are new ideas, new faces, and a new direction. The SGA must make itself more meaningful. Help me help the SGA serve as a voice for all students.

PAUL HARWITZ, ASI

QUALIFICATIONS:

1. SGA Academic Committee.
2. Vice-president of French Club.
3. West Dining Hall's Food Services Committee last year.

PLATFORM: Open dorm policy should be liberalized. Fraternities should be autonomous. Commuters should be able to park close to their classes. Student co-op housing is necessary. Students must have a voice in changing degree and graduation requirements to meet modern realities. Student discipline should be determined by student courts when possible.

KERMIT LEIBENSPERGER, ASI

QUALIFICATIONS:

1. SDS member.
2. Draft counselor.
3. Captain of elementary school safety patrol.

PLATFORM: I am a candidate on the SDS ticket with Steve Lee. The U of D is not the ideal of the objective, critical university. It serves the interests of the military-industrial complex. We are struggling to end Dupont control, university complicity in war and racism en loco parentis and unfair labor practices.

ANTHONY T. SIMEONE, BEI

QUALIFICATIONS:

1. MRHA representative.
2. Open Dorm Committee member.
3. GDI Game chairman.

PLATFORM: A universal problem facing colleges today is the lack of communication between administrators and students. Students have decided that they should become more involved in decisions affecting themselves. But this has exposed many new problems. Determining and solving these problems will be one of my goals as senator.

CAM YORKSTON, ASI

QUALIFICATIONS:

1. Vice-President of Harrington A.
2. Treasurer of Delaware Sport Parachute Asso.
3. A Sincere & Active Interest in SGA.

PLATFORM: The past year has seen many changes in this university. The physical growth is witness enough to this, but more important are the policy changes. I would like to see the following: higher student wages, less expensive parking stickers, a student activities card and interchangeable meal tickets. Anything is Possible!



Elaine Woodall

Bill Woodfore

Commuter Senators

ELAINE D. WOODALL, ASO

PLATFORM: Having attended the University of Wisconsin I feel I am well qualified to implement the progressive educational ideas already in existence at that institution. My major goals as a senator would be: 1) increased student control over student life; 2) high rise parking lots; 3) increased bus service during peak periods.

WILLIAM D. WOODFORD, EGO

QUALIFICATIONS:

1. Vice-President of Brown Hall.
2. Vice-President Univ. of Del. Young Democrats.

PLATFORM: Having lived on campus and off campus, I realize the advantages and disadvantages of both. With the necessary drive and leadership, I see 69-70 as being the vital year for the realization of a genuine base of student power in policy making through the Students Rights Statement and the new SGA Constitution.

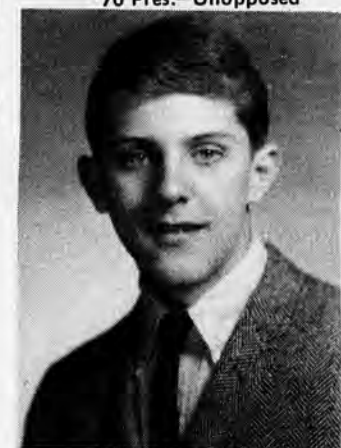
EMILY WEIDMAN - no picture

EMILY WEIDMAN, EDI

QUALIFICATIONS:

1. Concern for the commuter.
2. Brandywine High School Senior Council.
3. President of American Field Service Club (Brandywine H.S.)

PLATFORM: These are my immediate goals:
1. I shall seek ways to make the commuter feel more a part of the University.
2. I shall investigate the problem of transportation within the Newark vicinity to aid those commuters living in apartments and other housing surrounding the university. I shall seriously work on these two points. As other issues come up in SGA, I shall represent the commuters' interest.

RICK FARMER
'70 Pres.—UnopposedBARRY GUERKE
'70 VP—UnopposedSHARON O'NEIL
'70 Sec.—UnopposedRITA HAYMAN
'70 Treas.—Unopposed

Steve Ceci

Alan Eagon

Tory Gigg

Steve Newton

Commuter Senators

CECI and JOHN CORADIN—no statements.

MISS GIBB and WAYNE NAUMOWICH—no statements.

(CHARLES) ALAN EGAN, ASI

STEPHEN NEWTON

QUALIFICATIONS:

1. Regularly attend Commuters Association.
2. Member of the New Party on Campus.

PLATFORM: As Commuter Senator it will be my responsibility to present the views of commuters to the SGA. To know the views of commuters I will speak to all interested commuters and attend Commuter meetings. My basic aim will be to give students a greater voice in university affairs.

PLATFORM: In order that any Student Government can effectively carry out its function, it must have at its foundation the support of the student body. In view of the sad state of student indifference on our campus, I cannot and will not make any promises, but only do what can be done as one who is interested.

Senate Districts

SGA senatorial districts by number of dormitories:

WOMEN'S DISTRICT

- 1-Thompson
- 2-Russell B,D
- 3-Gilbert B,D
- 4-Gilbert F, Harrington B
- 5-Harrington C,D
- 6-Smyth
- 7-Cannon, Kent, New Castle
- 8-Squire, Sussex, Warner
- 9-Rodney B,D,E, La Maison Francaise*
- 10-Dickinson A,C,E*

There will be three men senators-at-large and three women senators-at-large.

There will be five-commuter senators.

*Two representatives.

MEN'S DISTRICTS

- 1-Colburn
- 2-Russell C,E
- 3-Russell A, Gilbert A
- 4-Gilbert C,E
- 5-Harrington A,E
- 6-Harter, Sharp
- 7-Brown, Sypherd
- 8-Rodney A,C,F, Belmont*
- 9-Dickinson B,D,F*
- 10-CFSG Senators*

11 District Positions Up For Grabs

Galbiati
Dist. 1Griffin
Dist. 1Rafetto*
Dist. 2Soneson
Dist. 6Kafka
Dist. 3Steinle
Dist. 3Dickson
Dist. 1Williams
Dist. 1Bordas*
Dist. 2Osborne*
Dist. 5Pesci*
Dist. 5Covino
Dist. 9Higginson
Dist. 9Leany
Dist. 9Bobzin
Dist. 7Nolan
Dist. 7Cavey
Dist. 3Marriott
Dist. 3Gladwin
Dist. 4Raffa
Dist. 4Brown
Dist. 10Yanco
Dist. 10Eaton
Dist. 8Oakford
no statements

CAROL GALBIATI, ASO
QUALIFICATIONS:
1. Assistant House Judicial Board Chairman.
2. Psychology Club Secretary-Treasurer.
3. Junior Counselor.

PLATFORM: This year, SGA successfully formulated a new SGA Constitution, and supported Women's Self-Regulated Hours and the Men's Open Dorm Policy. Now that these policies are formulated, they must be implemented for the students' benefit. I would like the opportunity to serve you in SGA to help achieve this goal.

MELANIE GRIFFIN, AS1
QUALIFICATIONS:
1. Social Chairman, Thompson.

2. Vice President, Concert Choir.
3. Freshman Steering Committee, 1967.

PLATFORM: This year's SGA Senate has shown much interest in solving the students' problems. The new districting has exemplified one goal—better representation to help make these problems known. Because the woman's role on campus is currently being challenged, my main purpose will be to accurately represent the women of Thompson.

KAREN KAYE CARTER, EDO

QUALIFICATIONS:
1. Human.
2. Running on the SDS ticket.
3. Committed to work for this platform.

PLATFORM: The university should be a center of objective criticism. But its involvement with the military-industrial complex, complicity in perpetuating racial prejudice and elitist attitudes of the university community thwart this ideal. These issues are of a much higher priority than student power issues, which are important but less critical.

TENA SONESON, HEO
QUALIFICATIONS:
1. SGA District Senator 1968-1969.

2. SGA Constitution Committee.
3. Omicron Nu.

PLATFORM: Having served as a District Senator on Student Government, I think I have a clear view of the role which must be played by dedicated students and an enthusiastic desire to make next year's government an effective representative body. I feel confident that I could continue to efficiently represent District No. 6.

QUALIFICATIONS:
1. SGA District Senator.
2. University Committee for Improvement of Instruction.
3. Social Chairman of Delaware Christian Fellowship.

PLATFORM: My goal as an SGA District Senator is to present the views of my constituency to the Senate and to inform my constituency of matters under consideration by the Senate and resulting actions taken. I plan to work to promote reforms beneficial to students as made possible under the new proposals and statements of the SGA Senate.

SUSAN STEINLE, AS2

QUALIFICATIONS:
1. High School Class Council Member.
2. President of Keyettes - Girl's Service Club.

3. Dorm Council member.
PLATFORM: Improved Communication will be my major goal as SGA Senator. I will communicate the ideas of the students and inform them of the achievements of the SGA. I will also try to open a two way channel of advice and criticism between the SGA and administration.

SUSAN COVINO, AS1

QUALIFICATIONS:
1. Member of the Rodney C and D House Council.
2. Dean's List.

PLATFORM: I believe that the SGA must be an active and forceful voice in representing the student body on issues concerning the University. With this goal in mind, I will carefully consider each issue that comes before the Senate. I promise to keep my constituents informed, and to try to represent their views fairly.

LINDA C. HIGGINSON, ASO

QUALIFICATIONS:
1. Sincere interest in responsible student government.
2. One year's experience in the Senate and as committee chm.

3. Junior Counselor (2 years).
PLATFORM: Being very disturbed by ever-present student-administration antagonism, I would like to see better lines of COMMUNICATION established between them so that COOPERATION would foster beneficial CHANGE. I would also hope to make more students aware of how vitally alive student government is and what their Senate can do for them.

CHRISTINE LEAHY, AS2
QUALIFICATIONS:
1. Initiative.
2. New ideas.
3. Mouth.

PLATFORM: If elected Women's Senator I will support and propose beneficial bills which would promote a liberal atmosphere at the University. My goal, as a representative of West Campus, is to help effect a closer, more unified student body, with a higher level of understanding between the various factions.

SABINA BOBZIN, AS1P
QUALIFICATIONS:
1. Secretary of the Class of 1971, 1967-69.

2. Junior Counselor.
3. SGA Senator, District 5, 1968-69.

PLATFORM: Having served as a senator, I am extremely interested in continuing the work the Senate began this year, especially in instituting many of the changes that are necessary at progressive institutions of higher learning. As an active member of several SGA committees, I feel adequately informed and qualified to serve.

MIKI NOLAN, AS1
QUALIFICATIONS:
1. Member of New Castle's House Council.

2. Active in the Debate Club and staff member of WHEN radio.
3. Dorm Scholarship Chairman.

PLATFORM: An integral part of choosing a candidate should be the knowledge of the candidate's goals. Perhaps this is obvious. However, the results are not so obvious. Continually, voters espouse preferences and candidates pay lip service to them. I will interpret my vote as a preference to action, not to lip service.

SALLY BROWN, AS2
QUALIFICATIONS:
1. Member of Dickinson AB house council.

2. Member of Student Center Council.
3. Member of high school Student Council for four years and class council for three years.

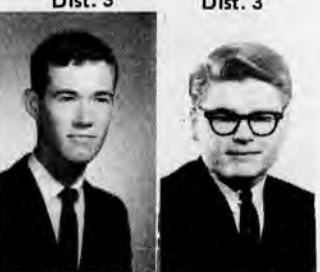
PLATFORM: I think that the Presbyterian Church on Main Street (now owned by the University) should be converted into a satellite Student Center in order to increase interest and participation of residents of the West Complexes in campus activities. Elimination of Women's hours should be put into effect as quickly as possible.

CAMILLE YANCHO, ED2

QUALIFICATIONS:
1. President and Secretary of two high school organizations.

2. Member of Program Planning Council of local USO.
3. Member of Dickinson AB Social Committee.

PLATFORM: A year has gone by without true participation by our complex in campus activities. I want to see it get involved and I am willing to work to see this happen. It's hard to get involved being so far from main campus, but I think it can be done.

Gilmer
Dist. 8Henry
Dist. 8

JOHN DICKSON, BE1
QUALIFICATIONS:
1. SGA Senate, District Senator Colburn, Russell C&E.

2. Dorm President.
3. MRHA Judiciary.

PLATFORM: The development of the Student Rights Statement, the new SGA Constitution and the open dorms policy have been signs of progress this year. I want to be reelected because the next year or two will determine if we are going to move forward under these documents.

BRUCE WILLIAMS, AS1

QUALIFICATIONS:
1. Concerned interest in a 2. Democratic.
3. Election.

PLATFORM: I am in favor of open dorms, the extension of women's hours, the establishment of a major in Afro-American studies, student and faculty representatives, with voting rights, on the Board of Trustees. I support only self-imposed standards of literary style and content for all publications distributed on campus.

MIKE CAVEY, ASO

QUALIFICATIONS:
1. Secretary, MRHA.
2. Former acting secretary, New Party on Campus.

3. Member, Newman Society.
PLATFORM: Student government at this University has been justly criticized as too isolated to be an effective voice. It is the district senator's responsibility to bring "Capitol Hill" to his constituents by means of regular reports and exchange of ideas. A powerful SGA can only happen after the students are informed.

DEAN MARRIOTT, AS1

QUALIFICATIONS:
1. Member, Student-Faculty Comm. on Student Publications.
2. Member, Sophomore Class Council.

PLATFORM: The role of the modern university is to educate its students to be active, creative, and responsible members of society. Administration, faculty, and students enter a partnership to achieve these goals.

The student body, an integral part of the academic community, must utilize its right to freedom of inquiry and expression, as well as freedom from extraneous regulations.

BILL BORDAS, AS2

PLATFORM: I believe the primary defect in the SGA has been in the lack of student support and cooperation for its programs. There must be more direct contact between students and their SGA representatives. For any issues of the upcoming year, student opinion must be represented accurately and channeled into effective action.

THOMAS NEIL GLADWIN, BEO
QUALIFICATIONS:
1. President Brown Hall 1968-69.

2. Student Representative on the Faculty Residence Hall Com.
3. Member of MRHA Open Dorm Committee.

PLATFORM: As a candidate for SGA District Senator representing Brown and Sypherd Halls, I foresee the Academic year 1969-70 as one replete with tremendous possibilities and opportunities. Through a close and constant relationship with my constituency I pledge to represent them in their best interests.

ROBERT RAFFA, AE1

QUALIFICATIONS:
1. Gilbert E. House Council Member.
2. Gilbert E. Judicial Board Member.

3. Gilbert E. MRHA representative.
PLATFORM: As an SGA Senator I will try to vote in a way that will best represent my district and be in everyone's best interest. My immediate intentions are to try to carry out the desires of the members of my district as expressed in the recent SGA poll.

SCOTT A. GILMER, ASO

PLATFORM: The university being a "community" ought to serve primarily the academic, social, and spiritual needs of its members. I want to see a new performing arts center drawing popular artist series, better entertainment possibilities on weekends with dances and student-owned night clubs, and an opened church on main street.

PAIGE M. HENRY, AG1

PLATFORM: I do not promise, but will propose and work for, an expanded concert series in combination with a student nightspot, to provide weekly entertainment, plus several major concerts featuring prominent speakers and top name entertainers. Also, acquiring full guarantee of student's rights, and use of those rights toward community improvement.

GRANT S. SNYDER, AS2

QUALIFICATIONS:
1. Hall Council Representative.
2. Tennis Team.

3. MRHA Representative.
PLATFORM: I will try to continue the progress which the Student Government Association has made towards increased student responsibility. I will also work towards increasing the student body's interest in student affairs.

*Indicates Unopposed Candidate

Class Officers To Run April 15-16



JACK HENRIKSEN



JOHN LEE



BOB ROSSI

Class Of 1971 President

QUALIFICATIONS:
1. Sophomore Class President.
2. Scholarship Chairman of Sigma Phi Epsilon.
3. Captain of Freshmen Tennis Team.

PLATFORM: As your class president, I have strived to achieve the goals of class unity and effective action through more worthwhile activities administered by a more powerful and efficient class council. We have strengthened ground work of the past and created innovations for the future.

One major innovation I vehemently support has been the concrete establishment of the Inter-Class Executive Council composed of the officers of each class. It combines experience and budgets of all classes to make realities of things like the Miss U of D Pageant, or the Union Gap and Bill Cosby concerts. The IEC is fundamental to obviating past class governments' inaction.

Combining this year's council's incentive with the IEC can make the goals of the past the realities of the future.



Barbara Hurst



Marti Loeb

'71 Secretary

BARBARA HURST, NU1

QUALIFICATIONS:
1. Served this past year as Projects Committee Chairman on the Sophomore Class Council.
2. Worked on both executive and student councils in high school.
3. Was secretary of Health Careers Club in high school.

PLATFORM: If elected secretary of the class of 1971, I would like to see the focus of class council on first, service to the community, and second, more class sponsored social activities. Also, I believe that a class council is not only responsible for its own class but should be capable of working with the other class executive councils in an organized and united effort.

MARTI LOEB, HE1

QUALIFICATIONS:
1. High School Student Government.
2. High School Choir Officer.
3. AHEA.

PLATFORM: I am running for the office of secretary because I want to be a contributor too, not merely a beneficiary of, the work of the class of 1971. I offer my services not only as recorder of class transactions but also as representative of and spokesman for other members of our class.

QUALIFICATIONS:
1. President of Freshman Class, 1967-1968.
2. Social Chairman, Sophomore Class.
3. Co-chairman, Miss U. of D. Pageant 1969.

PLATFORM: Class government has been existing in a void; never sure whether it is a social or governmental organization or a mixture of both. I submit a definite proposal: that the class assumes a strictly social role: management of social activities at the University of Delaware. No group is presently accountable for this. The resulting inconsistency in the scheduling of dances, concerts, and other such events is well known. The classes, who have sponsored many of these events, would be a logical choice for this responsibility. Using the Inter-Class Council, which our class will be in charge of next year, as the coordinating unit, the possibilities for improvement in the social field would be numerous. An annual social budget could definitely be considered. Such events as the Miss U. of D. Pageant would be easily expandable.



Barbara Stewart



Ray Jacobsen

BARBARA STEWART, ED1

QUALIFICATIONS:
1. Freshman Class Council.
2. Sophomore Class Council.
3. Leadership Conferences and have held positions in the dorm.

PLATFORM: I feel that a closer relationship should be developed between the class council and the class itself, that the individuals of the class should be better informed about class events and given every opportunity to express their opinions and ideas. I will enthusiastically devote the time and energy necessary to serve well as class secretary.

'71 Vice-President

RAYMOND A. JACOBSEN, JR. AS1

QUALIFICATIONS:
1. Past President, Rodney E-F.
2. Class of '71 Council.
3. Member, Advisory Committee to the Dean of Men.

PLATFORM: Much has been said of the ineffectiveness of class government. The ticket of Lee, Jacobsen, Hurst, and Seitz proposed a new program of "involvement." Through actively sponsoring social events and service projects, we hope to provide strong leadership which will be noticeably beneficial to the entire Class of 1971.

QUALIFICATIONS:
1. Two Years Varsity Debate.
2. Treasurer, Delaware Debate Society.
3. Active in Community Action Program.

PLATFORM: For two years the Class of '71 has coasted along without a definite direction or goal, hindered by a lack of leadership. The ideas of class unity and class friendship have been neglected. Most Sophomores probably don't even know who the current President and Vice-President are. Yet, these two officers are both running for another term. The time has come for this class to decide where they want their class to move.

It will be my goal as President to insure that the "class" at the University fulfills its obligation to bring students together in an atmosphere of common experience and friendship. Now that the Class of '71 is half-way through its stay at the University, it can wait no longer for the direction it needs.



Carol Ida



Paul Seitz

'71 Treasurer

CAROL IDA, ED1

QUALIFICATIONS:

1. Presently a member of Sophomore Council.
2. Held the office of treasurer of Student Council in high school.
3. Have pride in my class and a desire to serve it.

PLATFORM: A large percentage of the money raised by the Class Council should be used now to finance events such as concerts and dances which will benefit members of this class and of the larger community rather than mainly saved and perhaps allocated to a general fund after our graduation.

PAUL SEITZ, BE1

QUALIFICATIONS:

1. Freshman Class Steering Committee.
2. Freshman Class Treasurer.
3. Junior Counselor.

PLATFORM: I'm very interested in becoming treasurer of the class of 1971. Being an accounting major, I've gained knowledge from my courses that will be of aid. I've already served a year as treasurer of the class and I'm confident I possess the ability necessary to do an excellent job.



Alan Kessler



Joanne Marshall



Robert Otteni



Rob Shapiro

'72 President

ALAN KESSLER, AS2

QUALIFICATIONS:
1. Freshman Vice-President.
2. Freshman Soccer Team.
3. B average student.

PLATFORM: Our class can accomplish much in the coming year. We will have had one year under our belts, and with it we will have gained much experience and understanding of college life. But to get anything accomplished, the support of every sophomore member will be needed. A strong, well organized class would not only draw the class closer together, but would also bring about more and better social activities.

I assure you with the valuable experience in class activities that I have gained as Freshman Vice-President, I would work hard and would establish a strong council that could accomplish much for you. All that is needed to make our year successful is your help and participation.

ROBERT A. OTTENI, AS2

PLATFORM: If elected President my first two goals will be to better the organization of the class council and to increase the amount in the class treasury. By better organizing the class council I seek to increase its ability to serve, understand and act in the best interests of the class. The amount in our treasury at the present time is low and must be increased if we are to function effectively as a class. To raise the funds needed I propose a more varied and extensive social and cultural program which would benefit the class and at the same time increase our budget.

I offer you my promise that as your President our class will become more active, better unified and more conducive to the social and intellectual development of its members.

ROB SHAPIRO, AS2

QUALIFICATIONS:

1. Editor of high school paper and yearbook.
2. Member of U. of Del. Marching & Symphonic Bands.

PLATFORM: The class of 1972 has the potential to become one of the most influential classes in the history of the university. By setting goals and achieving them, we will establish a reputation- a reputation indicating that we are an interested, concerned, and highly motivated group. By demonstrating these qualities, our voice in student-administration dialogue will receive a just consideration. Thus we will pave the way to great class achievement. It is my goal, if elected president, to devote my efforts to the coordination and direction of class activities in order that our class can move forward to be recognized, move forward to be depended on, move forward to become one of the most influential classes in the history of the university.



Mary Bosse



Ron Karasic



Joe McDonough



Sandy Schenk

'72 Treasurer



Harry Landsburg



Gary Lissak



Tom Marshall

'72 Vice-President

'72 Secretary

Publications...

(Continued from Page 1)
from the university officer responsible:

- a) University Bookstore -- Manager;
- b) Residence Halls, excluding lobbies -- Director of Residence Hall;
- c) Dining Hall -- Dining Hall Manager.

Any member of the university community may distribute literature at any point on campus without permission from an official except for the above-mentioned locations.

EXPENSES

6. Arrangements to cover expenses associated with the distribution and/or disposal of the materials must be made when authorization is obtained to use university facilities or property.

7. Any member of the university community who objects to the distribution of particular published materials on campus may express his concern to the university officer responsible for the facility where the material is being distributed; to the Office of Student Services; or to the sponsor.

8. If, in the judgment of the university officer responsible for the facility where the materials are being distributed, the distribution constitutes a disruption of normal university activity, (i.e. if members of the university community can not go about their business because of the distribution) he should inform the distributors of his opinion and request that distribution be discontinued.

DISCIPLINE

If the distributors refuse, the responsible officer should advise them that they may face disciplinary or civil action if they persist. If they still refuse the officer should take appropriate action.

9. Persons who are refused permission or are requested to discontinue distribution may

appeal to the Chairman of the Committee on Student Publications, who will convene the Committee to hear the matter.

10. To assure widespread understanding of university policies and procedures governing the distribution of published materials on the campus, each student should be provided with a copy of this policy statement.

Cadets To Visit West Point

Four senior cadets will visit the U.S. Military Academy at West Point this weekend.

Dick Hayford, EDO, Jim Mellor, AG9, Randy Young, AS9, and Jim Roy, BE9, will visit the Academy under an ROTC exchange program designed to give civilian institution cadets an insight into the day-to-day life of a senior cadet at West Point. The Delaware cadets will participate in all activities as USMA seniors for three days.

The cadets will attend classes, athletic and social events, and attend orientation classes on the history and tradition of the Military Academy. Seniors at the Academy will act as escorts. While at West Point, the four cadets will be subject to all rules and regulation of the school, including participating in formations and parades.

Greek News...

(Continued from Page 7)

The Brotherhood of Sigma Nu would like to extend special congratulations to Brother Dave Klinger for being named to the All-Tournament Team in the National Invitational Tournament held last week in Riverside, California.

Sigma Nu would like to congratulate Brother Sloan as the winner of the Delt's Easter Keg Hunt.

The SPE's congratulate their wrestling team on their championship and their track team on its second (?) place finish. They also report that they are well ahead in the overall intramural and fraternity division race.

NEWARK LUMBER CO.
221 E. Main St.
737-5502
Headquarters for BUILDING PRODUCTS



"THE ULTIMATE IN PIZZA BAKING"

157 E. MAIN STREET
NEWARK, DELAWARE

DELIVERY AFTER 4:00 P.M.
CALL

368-8574

OPEN SUNDAY — 4 P.M. TO 12 P.M.
MONDAY THRU THURSDAY — 11 A.M. TO 1 A.M.
FRIDAY & SATURDAY — 11 A.M. TO 2 A.M.

Class Instructors Term Lecturing 'Archaic'

By ALAN BERNSTEIN

In room 007 of the Hall Building at 11 a.m. on Tuesdays and Thursdays a quite unconventional class meets.

The complete title, as described on the manual for students is "ED 209, Psychological Foundations of Education, an individual progress course."

The instructors in this course are Dr. John Neisworth and Dr. James Crouse. Privately, they call the traditional practices of lecturing text material and group examinations "archaic." Practically, they are attempting to overcome many of the shortcomings of the old system, which originates from pre-printing press times when books were not available for all students.

The traditional course format requires all students to read material, attend lectures, and take examinations at the same pace. The goal, thus, is a grade and not learning. The distribution of grades on mid-terms and finals, for example, is much a result of such uniform pacing. The grade does not reflect how much you learned but how well you did in relation to the other students at a fixed pace.

There is evidence that a "personally paced" course can yield 50 to 90% "A's" (95% mastery) instead of the usual handful of top grades. The grade a student makes is determined by how far he has progressed and mastered the concepts of the course.

To accomplish this individuality, students do not take hourlies, but, rather, take quizzes which cover the important concepts. Before a student takes a quiz, he must take an "interview" with another student who has already read the material.

QUIZZES

No two quizzes are alike; they are devised by a computer which pinpoints what specific concepts have been missed. A student may retake a quiz several times. Thus, learning is more important than first-time precision. Both subject mastery and a good grade are the result if a student desires.

A student can also add instructional material to the

course for course credit. Thus, the latitude of the course is expanded. In time, students will be able to select an area of concentration within the course plus a required core as to personalize even further.

SPECIAL EVENTS

As a reward, once a student has passed a quiz, he is allowed to attend a "special event," which is a presentation giving supplementary course information in the form of a lecture, film, or other media.

As it stand now, ED 209 is the result of several years of modification. Admittedly, there are many bugs. But the instructors feel that the change in procedures will bring about increased interest, learning, and success for the student.

The Card Center
55 East Main St.
CARDS — GIFTS
PARTY SUPPLIES

Richards Dairy Inc.

57 ELKTON ROAD



Steaks,
Hamburgers,
Subs

Our Own Make Ice Cream

Phone 368-8771

MON. THRU FRI. 7:30 A.M. TO 11 P.M.
SAT. 7:30 TO 5:30 CLOSED SUNDAY

Changes Slated For Blue Hen

With the election and confirmation of new officers, plans for next year's Blue Hen are well under way.

According to Bonnie Colvin, ASO, the newly elected Editor, many changes and innovations are in the offing for the yearbook of the class of 1970. These new features will be announced when the plans are more definitely formulated.

Other newly appointed Blue Hen officers are as follows: Business Manager, Jeff Diamond, AS1; Seniors' Editor, Gale Catley, AS1;

Layout Editor, Karen Leinheiser, AS1; Photo Editor, Alan Hendel, AS2; and Literary Editor, Jean Bringardner, AS2.

Several staff positions remain to be filled. Announcement of these appointments will be made at a later date.

LARGEST SELECTION
OF
FABRICS ANYWHERE

DRESS MATERIALS
NOTIONS
DECORATIVE FABRICS

DANNEMANN'S

136 E. Main St.

JADE EAST®

if she doesn't
give it to you,
get it yourself!



Jade East After Shave from \$3.00, Cologne from \$3.50, and a complete collection of masculine grooming essentials. As an alternate fragrance, try Jade East Coral and Jade East Golden Lime. SWANK, INC.—Sole Distributor

LOOK WHAT'S COME TO NEWARK!

Hamburgers
Shrimpburgers
Fried Chicken
Hot Dogs



Beef Sandwiches
French Fries
Milk Shakes
Ice Cream

The Kitchens of
**DOLLY
MADISON**

AT OUR GRAND APRIL OPENING AND FOREVER AFTER...AT

The Park & Shop Shopping Center, Newark, Delaware

For extra fast service call in your order ahead of time. It'll be ready when you arrive.

Hot & Ready

Call 368-8958

TO TAKE OUT OR EAT-IN

HERE'S WHERE WE ARE!



HERE'S YOUR TICKET!

This coupon good for 10c off any purchase
in the Kitchens of Dolly Madison.
Coupon good only from April 11 thru
April 19, 1969
(Limit one to a customer)

KDM-69-1

SPECIAL OFFER

This coupon good for 50c off
the purchase of a half gallon
of ice cream in the Kitchen of
Dolly Madison.

**50¢
OFF**

Coupon good only from April 11 thru
April 19, 1969
(Limit one to a customer)



EYE-TO-EYE Delaware's Dan Carnevale sizes up the situation, closely guarded by a Bucknell defender. Bucknell triumphed 10-4.

Staff Photo by Chick Allen

Lose 10-4

Bucknell Stuns Stickmen

Jim Morris scored four goals and led Bucknell to victory over the Hens, 10-4, in Delaware's opening lacrosse game last Wednesday at the South Campus field.

Ed Farver of basketball fame scored first for the Bisons to give them an early lead which they kept throughout the game. In the first quarter, with the Lewisberg, Pa., school leading by one goal, Morris dumped in 3 quick goals to make the score 4-0 at the end of the quarter. Not relenting, Morris quickly scored his fourth straight goal early in the second quarter.

With the Hens unable to mount much of an offensive threat in the first quarter, Co-captain Mike Hughes brought them to life in the second when Stretch Levis fired a perfect pass to Hughes who rifled in the Hens' first score. But the Hens were not able to keep their momentum up because Lou Kissling quickly scored 2 goals to give the Bisons their 7-1 half time lead.

In the second half the Hens started to play together and scored first when Levis

knocked in the third Delaware goal of the afternoon, narrowing the gap to 7-3. Then in the fourth period Bucknell poured in 3 more goals, two by Jim McKee and a final by Kurt Torrell. Dan Carnevale scored the Hens final goal to adjust the score to 10-4.

"We just made too many mistakes," said co-captain Steve Rash. "In the first half we played their game and couldn't do much right. Then in the second half we seemed to have settled down and played our type of game, which is ball control and contact."

Tomorrow the stickmen host Lehigh at 2 p.m.

SALES - SERVICE
RENTALS

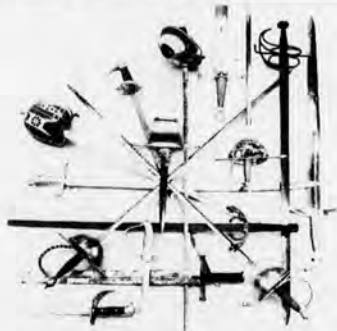
EDER BUSINESS
MACHINES, INC.

Elkton, Md. 21921

Phone 301-398-1570

MILTON AGUOIR
Sales Representative

JUST
ARRIVED



\$12.95 UP

SWORDS

A VARIETY OF
SHAPES & SIZES

IMPORTED FROM ITALY & SPAIN

*Also a complete selection of pipes
and tobaccos.



BEE HIVE CO., INC.

Tobacconists Since 1907

39 E. MAIN STREET, NEWARK, DELAWARE 19711
302 • 366-8725

Netmen Bow In Debut; Host Drexel Tomorrow

In their first match this season, the varsity tennis team lost 6-3 to Johns Hopkins on Wednesday at Delaware's new courts.

Fred Scerni, third singles, and Dave Verner, fifth singles, were the only two individual winners for the Hens. Scerni beat Nabby Bronstein 6-2, 4-6, 6-0 and Verner topped Tony Bond 6-4, 6-2.

In third doubles Charles Atkins and Charles Baxter of Delaware defeated Bond and Bob Feldman 6-0, 6-4.

Tomorrow the team meets Drexel at home at 2 p.m.

Results:
Singles Mike Marcus (H) def Ray Royer 1-6, 6-1, 6-3
Bob Feldman (H) def Jack Hendrickson 6-2, 6-2
Fred Scerni (D) def Nabby Bronstein 6-2, 4-6, 6-0
John Isaacs (H) def Mike Kallay 6-2, 6-1

Dave Verner (D) def Tony Bond 6-4, 6-2

Pete Javlon (H) def Jack Elsworth 7-5, 4-6, 6-2

Doubles Marcus and Isaacs (H) def Boyer and Scerni 6-3, 6-3

Bronstein and Javlon (H) def Hendricks and Verner 6-2, 6-4

Charles Atkins and Charles Baxter (D) def Feldman and Bond 6-0, 6-4.

"A thoughtful choice . . .

JOHN LEE
Pres.

RAY JACOBSEN
Vice-Pres.

'71

PAUL SEITZ
Treas.

BARB HURST
Sec.

toward an effective government."

Rhodes Drug

Store

TRAILWAYS

BUS SERVICE

36 East Main Street

John and Yoko POSTER



..... two-sided many-headed two virgin poster unflinchingly, unforgettably uncensored. The poster does not have apples covering j&y's private parts. We put the apples on this ad because in many places in this country private parts are outlawed and we are not interested in being busted for such rive as that.

cliff house
box 220, village station
n.y.c. 10014

302

Name

Address

City

State

Zip

Hens Demolish Swarthmore...

(Continued from Page 21)

shutout baseball while notching his first victory of the season.

FIRST INNING

The farce began right in the first inning as the Hens sent nine men to the plate and emerged with six hits and five runs.

Shortstop Ron Klein opened the frame with a walk before third baseman Jimmy Robinson's double sent him across with Delaware's first run. Then, after second baseman Dave Yates singled, Klinger drove in the hosts' second and third runs with his first of two triples. As if this wasn't enough, Fad blasted one of O'Neal's tempting offerings out of the park to jack up the Hen's lead to 5-0.

COMEDY OF ERRORS

In the second inning Swarthmore put on a rare display of fielding, which would have even made a Little League coach throw fits. Klein led off once again and lofted a pop-up between first and second. Infielders Dick Kamen and Ron Krall not only failed to catch the ball but also managed to collide with each other. O'Neal followed with a throwing error on Robinson's dribbler as Klein advanced.

With two outs centerfielder Chip Burton climaxed the comedy of errors by allowing Fad's fly to sail right through his glove, as both Klein and Robinson scored. Glenn Hinton drove in Fad with a single as the Delaware runaway advanced to 8-0.

The Hens added two more in the fourth inning. Hale opened with a double. Next, Bob Chase booted a grounder by Dave DeRyder, pinchhitting for Walker. Hale went to third on the error and scored on Klein's sacrifice fly. Robinson's single scored DeRyder, the Hens' tenth run of the day.

QUAKER RALLY

The only serious threat Swarthmore made came in the fourth with southpaw

Ron Powell on the mound for the Hens. Back to back singles by Mark DeWitte and Kamen and a wild pitch put runners on second and third with none out. After Burton bounced out, O'Neal, who would have been better off pitching pennies, knocked in the Little Quakers' first two runs with a double to left. He then scored on Bob Marxym's single as the lead was momentarily cut to 10-3.

Swarthmore had four hits during the fourth inning for a total of six. These were their last safeties as Hen moundsmen Ted Zink, Doug Hopper, Mark Brown and Chris Spicer combined to hurl five hitless innings in relief. Zink and Spicer threw nothing but salt pellets in the fifth and eighth innings respectively, striking out the only three men they faced.

O'NEAL BOMBED

O'Neal continued to pitch

batting practice for the Hens in the fourth inning as Hale's round-tripper, his third hit of the day, with Fad aboard, upped the Hens' margin to 12-3.

In the fifth frame it was a similar story though the cast was different. Following a single by Yates, Klinger provided the fireworks with

his home run as the score jumped to 14-3.

CAMM RELIEVES

Swarthmore hurler O'Neal was finally replaced in the sixth by Ross Camm. During his five innings of work O'Neal had been unmercifully battered for thirteen hits,

including the three four-baggers and fourteen runs, nine of which were earned.

Camm set down the Hens in the sixth without allowing a run, surviving a base-loaded two out situation. This was the only inning all afternoon in which Delaware had been held scoreless.

CALL US FIRST FOR ALL OF YOUR HI-FIDELITY ADVICE

D-M-RADIO & ELECTRONICS CO.

WHOLESALE DISTRIBUTORS OF HI-FIDELITY COMPONENTS

Call 652-0424 658-3545 656-2222 8:30 A.M.-5:30 P.M. DAILY SAT. 8:30 AM - 3:00 P.M.

215 W. 4 WILM. MEMBER BANK OF DELAWARE CHARGE-CREDIT FREE PARKING AT 303 W. 4TH ST

Here's a boost for all full-time students of the UNIVERSITY of DELAWARE



...your personal "BLUE HEN" CHECKING ACCOUNT

☐ No Charge for Checks

☐ No Minimum Balance

A Farmers Bank "Blue Hen" checking account makes it easier for you to take care of expenses while in school, at no carrying cost! It's limited to full-time students only.

You get 25 checks free each three-month period of the regular school year. Checks are personalized, and included in a beautiful leatherette folder complete with "Blue Hen" insignia. Additional checks, when needed, are available at ten cents each.

"Blue Hen" no cost service is handy for parents too. "Banking by Mail" is a convenient way for them to deposit money in your account.

You don't even have to leave the campus to bank with Farmers. Our branch in the Student Center Building is open for business 9:00 A.M. to 3:00 P.M., Monday through Friday. Why not take advantage of this service?



FARMERS BANK
of the
STATE OF DELAWARE

Member Federal Deposit Insurance Corporation

THE FIRST BANK IN THE FIRST STATE

Beautifully Monogrammed

PINS



ACTUAL SIZE

Choice of White or Yellow.
Gold finish, round style
shown, or oval.

Wynn's 295
Includes
Engraving
3 Initials.

40 EAST MAIN STREET

Klinger All-Tourney Baseballers 3-4

(Continued from Page 23)

of a successful double steal in the eighth inning of the nightcap, scoring the eventual winning run as the Riverside second baseman hesitated with his relay to the plate.

Riverside had taken a 4-3 lead on a four run uprising in the fourth inning off Doug Hopper, who went the distance for Delaware. A triple and a home run by UCR were the big weapons in the Riverside attack.

Hinton, Willy Miranda, and Willard had two hits apiece for the Hens in the nightcap. Miranda and Hinton each scored two runs.

FOURTH BEST

Hopper's 2.57 earned run average was fourth best in the tournament.

"I didn't think I was in shape to go nine innings," Hopper said after his fine performance against the Riverside Highlanders. "But I guess I showed myself that I could. I was afraid against Indiana but felt good against

Riverside today (Saturday). I imagine it's because I had one under my belt already."

And then it was all over. Seven ballgames in less than a week against the toughest teams in the country. And Delaware had won three more games than anyone had predicted.

NOT ALL FUN

On the plane ride back east, All-Tournament right fielder Dave Klinger summed up the sentiments of the entire team. "I hope that this trip wasn't all fun, but that we learned from it, and will now go from here and be the class of Middle Atlantic Conference, beating the MAC teams with the class that we obtained from participating in this tournament."

SCHMIDT'S BEER PRESENTS

IRON BUTTERFLY

American Dream

U. of Del. Field House
Wednesday, April 23
Newark, Delaware

One Show Only: 8 PM

Advance Tickets \$3.50
\$4.00 at door

Tickets available at Student Union
Lounge: Bag & Baggage, Wilmington.
Mail Orders: Bag & Baggage, Wilmington, Delaware. Enclose self-addressed, stamped envelope.

COMING SOON
WATCH FOR THE
ARRIVAL

**BEE
HIVE**

39 E. MAIN ST.
NEWARK, DEL.

DUETTO

Philadelphia
Spectrum
SATURDAY, APRIL 12th, 8:00 PM
CORA PROMOTIONS PRESENTS

the JIMI HENDRIX EXPERIENCE



also Noel Redding
Tix. \$3.50; \$4.50; \$5.50 & \$6.50

Tickets in Philadelphia at Box Office or at: 15th and Locust Outlet
WANAMAKER'S, GIMBEL'S, CENTRAL CITY, and GLASSMAN'S.
CHELTENHAM.
Wilmington, Del., BAG and BAGGAGE
Pick up late mail order tickets at window
on concert date.

1 SHOW ONLY

MAIL TO: HENDRIX, BOX 7800, PHILA., PA. 19101
For Information Phone (215) FU 9-5000

Buy Your Honda At
TAYLOR AUTO SUPPLY
1201 FRENCH STREET
Delaware's Largest Honda Dealer
Selling and Serving Hondas Only
FRANK BECKMAN — Sales Department
ART VINCENT — The Best Honda Mechanic

Completely gassed on a quarter.



The Honda Scrambler 90. Just sips gas — 160 mpg. Upkeep's easy. So's insurance and initial cost. Never any trouble when you want to park. Good looks that won't quit. And talk about being fast — a rugged, dependable OHC 4 stroke engine opens this baby up to 59 on the highway.

So stop watching good money go down the old gas tank. Pick up a Scrambler 90 at your nearest Honda dealer.

HONDA

See your Honda dealer for a color brochure, safety pamphlet and "Invisible Circle" film; or write: American Honda Motor Co., Inc., Dept. C-14, Box 50, Gardena, California 90247.

Against Montclair Frosh Open Today

Delaware's freshman baseball team will have a district homegrown flavor when it opens its season by hosting Montclair State today at 4 p.m.

All nine of coach Loren Kline's starters are products of Delaware high schools, including three Salesianum graduates.

"We will have pretty good defense and I think we will hit the ball well," Kline says, "but we don't have any pitching depth at all."

ONLY TWO PITCHERS

Salesianum's Mike Pawlina, a converted third baseman, and Terry Brown of Conrad are the only two pitchers on Kline's roster. A third pitcher, hard-throwing Gardy Kahoe, is out for spring football and will not be available until the last four games on the 10-game schedule.

Marty McDonough will probably start behind the plate although Bob Scott has impressed Kline with his hitting. If McDonough starts at catcher, Scott will probably get the right field job.

The rest of the outfield

has Dick Casey in center and Bill Stoebe in left.

INFIELD SET

The infield for the first game has Fred Blom at first base, Dave Jensen at second, Bob Riley at shortstop and Tom Zeberkiewicz at third.

Tom Shank has impressed Kline with his hitting in recent practices and could move into the lineup. Shank, normally a third baseman, can also play in the outfield.

GOOD NUCLEUS

"We have the nucleus of a very good ball club except for

the pitching," Kline says. "If we only had the pitching we had last year, I don't think anybody would touch us."

Three of Kline's pitchers from last year's freshman team—Doug Hopper, Ted Zink and Mark Brown—are now members of the varsity staff.

The complete freshman schedule:

April 11, Montclair State; 12, at Lehigh; 18, Williamson Trade; 25, at Williamson Trade; 30, Lehigh;

May 3, at Rutgers; 7, Drezel; 10, West Chester; 14, at Bullis; 17, Bullis.

Hen Duffers Off To Fine Start; Face Swarthmore, PMC Tuesday

Two weeks ago, the Blue Hen golf team opened their season with a 13½-4½ win over LaSalle College in Philadelphia. Jim Powell took medalist honors with a 73 over the cold and windy Philmont Country Club course.

The following Monday, the team defeated American University by the same score in Washington. Cold weather still prevailed but Tom Ciconte overcame cold hands to card a 73 in winning his match. As the Blue Hen duffers travelled further South, they encountered high caliber competition in the form of Old Dominion

College at Stumpy Lake Golf Club in Norfolk, where the Hens won a tough match by a score of 5-4.

After a week of competition in Virginia Beach, Coach Scotty Duncan's golfers returned home Monday to shut out visiting Brinkley College from Boston 7-0. Medalist was Kevin Scanlon who fired a 72 at the Louviers course.

Wednesday, Captain Charlie Pinto carded 75 over the Hens' windswept home course, to lead his team to wins over both West Chester and Haverford College by scores of 11-7, and 17-1 respectively.

THRU APR. 20

A shocker!

(and a winner!)

A fresh voice in the theatre!

"Shepard is one of the two or three most talented Off - Off - Broadway playwrights . . . LA TURISTA offers an opportunity to catch up on what's going on (in new theater). It's an interesting and lively production that Theater of the Living Arts has mounted."

Says things about the communication gap, about crises where money can't help . . .

"LA TURISTA is a work of superlative interest . . . passionate, intense . . . graceful . . . frenzied energy . . . despair and humor . . ."

LA TURISTA

by SAM SHEPARD

THEATRE OF THE LIVING ARTS
334 SOUTH ST.
Wed.-Sat. Evens., 8:30. Sun. Eve. 7:30.
Mats. Wed. & Sun. 2:30

Student Discount
Tickets on sale
at Student Center.
Main Office,
Room 100



instant news

You'll be instantly in the know
at the turn of a dial
or the push of a button, on

KYW NEWS 1060
RADIO
all news! all the time!

Three Homers Hit Blue Hen Nine Romps

By ALLEN RAICH

Delaware's baseball team recently returned from a spring trip to Riverside, California where they encountered some of the finest teams in the nation. The Riverside tournament was serious business as far as the Blue Hens were concerned, for baseball here on the Newark campus is not taken lightly.

After competing against such top-flight clubs as USC, UCLA, and Brigham Young, the Hens deserved a breather. For this reason Coach Bob Hannah scheduled a contest with tiny Swarthmore College. The affair ended as a cakewalk and turned out to be one of the biggest fiascos since the Bay of Pigs as Delaware blasted the Little Quakers right off the victors' diamond 17-3.

Rightfielder Dave Klinger paced the 17-hit Delaware onslaught with three hits, four RBIs, and three runs scored. His two triples tied the school record for three-baggers in a season of five while his towering opposite field home run in the fifth inning gave him the club lead with three. Klinger, seventh nationally in batting last spring, also leads the team in average hits and RBIs.

HEN HOMERS

First baseman Rick Hale

had a perfect three for three afternoon, including a 400 foot round tripper in the fourth. The versatile senior co-captain knocked in two runs and scored twice. Left fielder Bruce Fad, top Hen batsman in the Riverside tournament with a .357 mark, contributed the third homer to the Delaware attack.

The partisan crowd sensed the type of matchup it would be very early in the afternoon. Before Swarthmore starter and loser Mike O'Neal could retire a single man, the Hens led 5-0. This margin bulged to 10-0 after the third inning. Meanwhile, Delaware starter Larry Walker stifled the meager opponents during his three inning stint. The junior righthander pitched two-hit

(Continued to Page 18)

Thinclads Top Lehigh For First Victory

Led by double winner Mike Kalmer, Delaware's track team coasted to its first victory of the dual meet season, 101-44 over MAC foe Lehigh.

Kalmer took the 100 in 10.5 with sophomore Dave Smith copping second. The junior then led Frank Gordy and captain Bob Johnson to a sweep of the long jump with a 22-5½ effort.

The Hens also swept both hurdling events. Sophomore Pat Walker beat out Bob James and Greg Walther for the honors in the 120 high hurdles, while Bob Edwards led Walker and Dave Fosbenner to victory in the 440 intermediates in the fine time of 56.3.

Dave Smith led Delaware's

fourth sweep, this one in the 220 dash. He snapped the tape in 22.5, good enough to nip Captain Johnson and Jim Foster.

Johnson did, however,

take the 440 in 49.5 with sophomore Steve Kessler taking second.

In the triple jump Frank Gordyleaped 44-2¾, good for first place laurels.

RENO'S PIZZA

FREE DELIVERY

22 ACADEMY STREET

737-9705

*Playtex is the trademark of International Playtex Corp., Dover, Del. ©1968 International Playtex Corp.



Playtex invents the first-day tampon™

(We took the inside out
to show you how different it is.)

Outside: it's softer and silky (not cardboardy).
Inside: it's so extra absorbent...it even protects on
your first day. Your worst day!

In every lab test against the old cardboardy kind...
the Playtex tampon was always more absorbent.
Actually 45% more absorbent on the average
than the leading regular tampon.

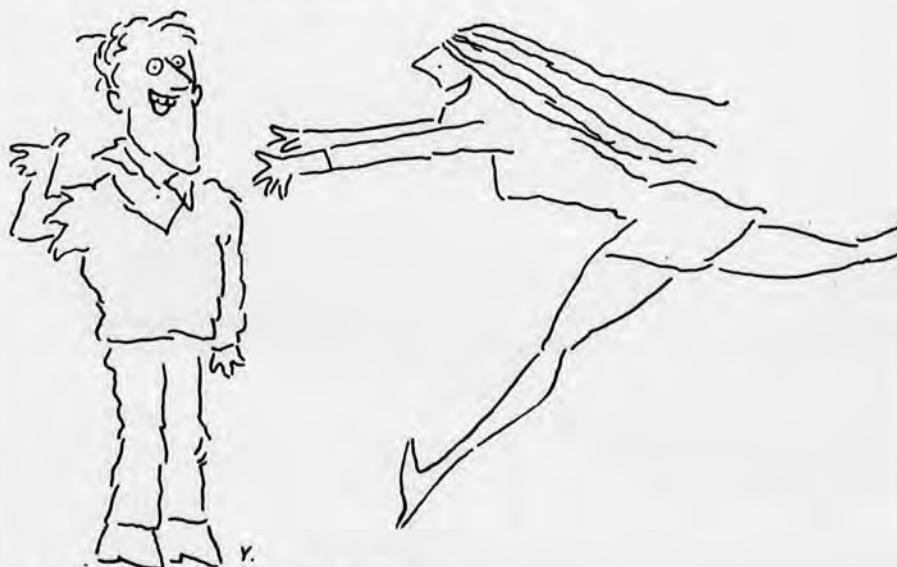
Because it's different. Actually adjusts to you.
It flowers out. Fluffs out. Designed to protect every
inside inch of you. So the chance of a mishap
is almost zero!

Try it fast.

Why live in the past?



"I'm a masochist. I threw
away my instructions
on self-defense."



A little pain is one thing, but sheer
disaster is something else. We put
instructions on self-defense in every
package of Hai Karate® After Shave
and Cologne for your own safety, be-
cause we know what girls can do to
an under-protected, over-splashed
guy. So please read the instructions
...even if it doesn't hurt.

Hai Karate-be careful how you use it.



Gridders Open Spring Drills

Delaware football coach Tubby Raymond had about 90 men on hand last Monday when his Blue Hens started 20 days of spring practice.

Raymond plans to practice six days a week for two weeks and then four days a week for two weeks, concluding spring drills with the annual Blue-White Scrimmage at Delaware Stadium on May 3.

The Blue Hens will be defending the Middle Atlantic Conference University Division championship, the Lambert Cup and the NCAA College Division Eastern Regional title. Last year's team won all of those awards during an 8-3 season.

"The objective of this spring practice and the coming season is to continue the development of our football team," Raymond says. "We said last year that we were rebuilding and I think that was evident from the way we improved as the season progressed. We want to continue this improvement."

The Blue Hens will have 32 lettermen returning in the fall, but Raymond refuses to predict a championship season.

"You just can't predict that we are going to have a great football team," the Hen coach says. "Last year's success was due to a great dedication to making a football team. Football is 80 per cent effort and we are going to need the same kind of dedication and desire this year. Complacency and apathy are two major problems. We must go forward, not level off."

Raymond lists the line as a potential problem area for the Blue Hens.

"We have to find replacements for three linemen on defense and we need someone to replace Hank Vollendorf on offense," the Hen mentor notes.

The three graduating defensive linemen are all-conference end Jim Scelba, winner of the Wilmington Touchdown Club's Award to the Outstanding Senior Defensive Player; team captain Bob Novotny, a fine linebacker; and defensive tackle Paul Camp, one of the team leaders in tackles.

"It will be difficult to replace those defensive men because of their leadership ability," Raymond notes.

The Hens will also have difficulty replacing Vollendorf, a 195-pound guard the Hen coaches referred to as a model for blocking technique.

DELUXE CANDY SHOP, INC.

41 E. MAIN ST.

Open 7:30 a.m. Close 8 p.m.

Breakfast & Luncheons

Platters

Sodas

* Cigarettes



SPRING IN THE AIR and Delaware's football players have 20 days of practice to look forward to. The spring drills will culminate on May 3 with the annual Blue-White Game. Photo by Chick Allen

Save up to 40% Sheet music

ALL SCOTCH RECORDING TAPE

TYPE 111-1/4-1200 Manuf. List Price \$3.50

Our 1-11 reels **2³⁴**

1200 ft. acetate on 7" reel

12 and up **\$2¹⁰**

ALL OTHER TYPES AT SIMILAR SAVINGS

Your K.L.H. & Magnavox Headquarters

DELAWARE MUSIC HOUSE

132 E. MAIN ST.

TEL. 368-2588

Needles - Stereo Compacts - Guitars - Portable Radios - Extension Speakers -

Music Supplies - Color TV, Stereos - Components -

Tape recorders - Cassettes - Records - Posters -

Putting you first, keeps us first.



Camaro SS Sport Coupe with Rally Sport equipment

Instant vacation. Camaro - the Hugger

A lot of people have the idea that a vacation begins only when you get where you're going.

Obviously, they haven't vacationed in Camaro, the Hugger. You start relaxing the moment you come in contact with Camaro's contoured bucket

seats. You feel snug without feeling stuffed in.

Now you're getting in the right frame of mind to consider some other attractions. Like Astro Ventilation in every model. And, road sense that gives you the feeling this is one car that knows

its way around—anything.

Start your vacation early this year. The minute you step into a Camaro. Your Chevrolet dealer will make all travel arrangements.

 Sports-Recreation Dept.

READY...
FROM THE
WORD
GO!



Schwinn

RACER

- Lightweight Styling
- Built-in Kickstand
- Schwinn Tubular Rims
- Foam Cushioned Saddle.

All bikes assembled — No charge service & repair — All makes. Large stock of parts.

S.D. KIRK & SON

173 E. MAIN STREET,
NEWARK

Delaware Tops Riverside, Big Ten

(Continued from Page 24)
approximately 300 Kiwanians from Riverside's three clubs who were sponsoring the Delaware club.

BIG LEAD

Howard's one-out homer in the third triggered a BYU rally that led them past the Hens 3-2. By the time the eighth inning rolled around the Cougars were safely sitting on a 12-4 lead, or so they thought.

Delaware unleashed a counter-attack, batting eight men in the eighth and 10 in the ninth to score eight runs and send the game into extra innings. Hale's single tied the score and drove out BYU's starting hurler Steve Easton who up until then recorded 12 strikeouts.

Jim Robinson and Fad (who homered earlier in the game) led the ninth inning uprising with doubles.

LOSES BENCH

As the marathon wore on, Bob Hannah's bench strength waned as more and more players were used as pinch hitters and runners and couldn't come into the game. At one point only four pitchers hadn't been in the game for the Hens.

In each of the extra innings Delaware had numerous opportunities to score and end the game but just couldn't capitalize on any of them. Finally it was someshoddy fielding by the Delaware team coupled with Howard's bat that won the game for Brigham Young in the twelfth.

NUMBER ONE

Against USC there never was really any hope for the Hens although they remained only three runs behind the Trojans until the eighth inning.

"USC was one of the best college ballclubs that I've ever seen," Hannah commented after the game. "They won't beat themselves with mistakes."

"UCLA and especially USC were in a class of their own, they had a real professional approach to the game," centerfielder and

second baseman Dave Yates said. "The other five teams aren't really that much better than us. We can play in their leagues and hold our own, but against UCLA and USC it's a different story."

BIG BAT

The most heralded player on the USC team was first baseman Bill Seinsoth. To date Seinsoth has been drafted by four major league baseball teams-and is ominous standing at the plate.

Seinsoth tagged Delaware pitcher Mark Brown for a solo homer in the fifth inning.

"I was scared to get the ball near the plate with Seinsoth," Brown said. "Anyone of the USC players could hit the ball out of the past, but Seinsoth was the most feared. I pitched all curves to him."

LEARNED A LOT

"I learned a lot about pitching," the sophomore hurler continued. "I gained a lot of confidence; you almost have to when you're pitching against the top team in the country."

The men from Troy jumped on Brown early with two runs in the first inning. They added two more in the third and another in the fifth, to up the tally to 5-0.

The Blue Hens came in the seventh inning on singles by Yates, Klinger, and Fad and a two-run double to right field by Hinton.

Southern California added four insurance runs in the eighth and walked of the field with their fourth consecutive tournament victory.

Although Seinsoth was the heralded USC player, the Trojan shortstop Cal Meier gained the plaudits of the Delaware team. Meier got two hits off Brown and dazzled the Hens with his spectacular defensive play.

TURNING POINT

Friday was the turning point for the Delaware baseball team. Disturbed by some loose defensive play during previous games, Coach Hannah switched his

defensive alignment. Hannah moved second baseman Robinson to third, centerfielder Yates back to second where he played last year, and thirdbaseman Hinton to center.

"I switched our defense mainly to tighten the infield. Hopefully the new combination will give us a better defense. Also now we can play a new starting lineup," explained Hannah.

The fighting Illini of Illinois were the first team to face Hannah's rejuvenated lineup and they felt the effects immediately.

SECOND WIN

Delaware came up with three runs in the top of the eighth to down Illinois 6-5 to post their second tournament victory.

The Hens used the long-ball hitting of Hinton and Joe Flickinger and some sharp relief pitching by left hander Ron Powell to come from behind and send the Illini down to defeat.

The game started out as a slugfest with Delaware scoring three runs in the first three innings and the Illini coming up with four.

PITCHERS IN CHARGE

Then the pitchers took command, throwing shutout innings until the eighth.

Fad singled to right-center to open the eighth and Powell dumped a sacrifice bunt up the first base line. Illini pitcher Barry Yurtis fielded the ball and fired to second trying for a forceout on Fad. But Fad scrambled into second ahead of the throw and Powell was safe at first on the fielder's choice.

Hinton followed by belting Yurtis's first delivery over center fielder's Ron Ingram's head for a triple to drive in two runs.

Al Fritz replaced Yurtis on the mound for Illinois and yielded a double off the fence



DAVE KLINGER belts a single against the men from Troy. Klinger was named as the All-Tournament right fielder. He was second in Blue Hen hitting with a .346 average and banger in seven RBI's.

Riverside Press Enterprise Photo

in left-center by Flickinger that drove in Hinton and ran the Blue Hens' lead to 6-4.

SPLIT TWIN BILL

The Blue Hens split their final doubleheader (they had three) on Saturday, losing to Mississippi and beating Riverside.

The Hens, who batted only .244 for the tourney, edged host UCR 6-5 in the tail end of the twin bill after dropping a 5-3 decision to Ole Miss.

Mississippi's Whitey Adams, who also made the All-Tourney team, hit a 385 foot three-run homer off of Steve Tissot in the fourth inning to power the Rebels to their second victory of the tournament. Adams' four

bagger erased an early 2-0 Delaware lead and put Mississippi into a lead that they never relinquished.

Delaware's Klinger knocked in all three of Delaware's runs, including two in the first inning, after singles by shortstop Ron Klein and Hinton. Klinger singled home the final run in the eighth.

HALE WINS GAME

Co-Captain Hale won the UCR game on the front end (Continued to Page 19)



Now Showing

"DAZZLING"

—LIFE



FRI. & SAT. 7 & 9:20
SUN-MON-TUES 8 ONLY

Sat. Mat. 1 p.m.

Apr. 12th over at 2:55

"Flipper"

Ladies Nationally Advertised Cancellation Shoes

- *Tremendous Savings of 40 to 60%
- *Latest fashions in all heels, toes, & widths
- *Layaways are welcomed.

NEAR SILO'S

Style **Delaware Shoe Outlet**
Fashion 3610 KIRKWOOD HIGHWAY
Elegance PLASTIC PARK CENTER
999-1342

ONE-STOP SHOPPING FOR ALL!

SHOE FASHIONS

Your last check from home just bounced?

Think it over, over coffee. The Think Drink.



For your own Think Drink Mug, send 75¢ and your name and address to:
Think Drink Mug, Dept. N, P.O. Box 559, New York, N.Y. 10046. The International Coffee Organization.

Hens Fourth In Riverside Tourney

By STEVE KOFFLER
SPORTS EDITOR

Defying the Las Vegas oddsmakers, the Delaware baseball team finished a surprising fourth in the third annual Riverside National Collegiate Baseball Tournament held last week in Riverside, California.

The University of Southern California, last year's national college baseball champions, took the Riverside Championship with an 8-0 record. The Trojans with their perfect log became the first team ever to go through the round-robin event without a defeat. UCLA, defending tournament champions finished third.

The Hens, representing the east, defeated both Big Ten opponents, Indiana and Illinois, and knocked off hosting University of California at Riverside in the tourney's finale to wind up their week's work at 3-4. Indiana also finished the tournament at 3-4 but the Hens were awarded fourth on the basis of having defeated the Hoosiers.

COACH PLEASED

"I was very pleased with our performance in the tournament," Delaware baseball coach Bob Hannah said. "If anyone would have told me before the tournament that we could have been 3-4, I would have taken it and not gone."

In the first two Riverside tournaments both eastern representatives Yale and Pittsburgh also finished at 3-4.

"We were not as ready as some of the other clubs for the tournament," Hannah continued. "We had to rely on sophomores and really did not have a proper chance to get ready."

SOME DIFFERENCE

Prior to the Riverside Tournament the Hens had played three games, none of which were under ideal weather conditions, and had three games rained out. USC on the other hand was 17-3 going into the tournament while UCLA, second in the national baseball polls, behind Santa Clara, were 14-1.

"No Delaware baseball team ever gave a better effort over an extended period of time with this type of competition since I've been coaching here," the Blue Hen mentor noted. "The tournament gave us an opportunity to play against top level competition with the end result being that we can beat this type of competition."

"Everyone did an excellent job during the tournament, especially Bruce Fad, Dave Klinger, Glenn Hinton, Dave Yates and Dave Willard."

LEADING HITTER

Fad led the Delaware team in hitting during the Tournament with a .357 average. He had nine hits including a big 400 foot

home run against Brigham Young, and a team-leading four doubles.

Klinger, who finished the tournament with a .346 average, was selected as the All-Tournament right fielder. He was the only Blue Hen so

best team in years to the tournament with nine fine college pitchers. The general feeling among the tourney coaches was that you had to have at least eight pitchers of good calibre to get by the week and win. We did it with seven and of the seven not all

Doug Hopper started things rolling in the third inning with a one-out single. Hinton's first double of the game (he had two) scored the first run. Hinton then scored when John Penn of Indiana dropped a pop fly ball off the bat of Yates.



BRUCE FAD rounds third base against the Trojans of Southern California. Fad scored one of the Hens' two runs against USC in a 9-2 loss to the national champs. Fad led the Delaware team in batting with a .357 average. He had nine hits including a big 400 foot home run against Brigham Young and four doubles.

Riverside Press Enterprise Photo

honored. Hinton went 7-22 during the tournament for a .318 average good enough to put him among the tourney's top twenty hitters, along with Fad and Klinger. Hinton also was the leading run producer and scorer for the Hens scoring 11 runs, high for the tourney, and banging in seven, as did Klinger.

Yates' big bat also came to life in the tournament as he went 9-29 for a .310 average. Yates also stole three bases all against Illinois.

WILLARD TOUGH

Hannah cited Willard's play behind the plate as a chief reason for the Hens' success in California. "Dave (Willard) helped a whole lot, constantly improving and sticking in there. He threw three runners out against Illinois, and hit the ball hard. I was concerned about our catcher for this year and still don't have all the answers, but there's a start. School's still out on the catching."

Although the Hens big bats boomed, it was the Delaware pitching that carried the Blue Hens to the heights that no other Delaware baseball team has ever reached.

"The pitching staff did the best job of pitching that I've seen since I've been here," Hannah said "Before the tournament I received a letter from the Illinois athletic department that said that Illinois would be taking the

had been tested. They accepted the challenge and did a fantastic job."

UNTESTED SOPH

The real story for the Delaware pitching staff came Thursday as Delaware faced the double threat of Brigham Young and USC. Hannah used Larry Walker, Chris Spicer and Ron Powell in the four-hour marathon against the Cougars of BYU. With Steve Tissot, Doug Hopper and Ted Zink all nursing score arms from recent pitching duties, that left only Mark Brown, a sophomore to pitch to the national champions Trojans.

Brown, who previous to the tournament had pitched to only four batters in his college career, went the route against USC turning in a fine performance, despite a 9-2 loss.

The Hens scheduled tournament opener against hosting UCR on Monday, April 3, was postponed as were all other Monday day games out of respect for the death of former President Dwight Eisenhower.

DOUBLEHEADER

The Delaware team opened the next day with a day-night doubleheader against Indiana and UCLA.

The Hens' game against Indiana was a wild affair in which the Hens jumped out to an early lead only to lose the lead and then regain their form and win their first.

Starting Delaware pitcher

But the Hens' 2-0 edge was wiped out when Hopper lost control and issued five walks in the fourth-four back to back. Indiana scored three runs in their only run-producing inning and took a 3-2 lead.

Along about the seventh inning the Hens became accustomed to the Riverside smog and unleashed a five hit attack to score three runs and wrap the game up.

Winning pitcher Ted Zink, who relieved Hopper, started the barrage in the seventh with a single. Hinton doubled Zink across the plate and Jim Robinson tripped to send Hinton home with the tying run.

After Yates made the first out of the inning, Klinger lined his second consecutive hit, a single and then Fad doubled to score the winning run.

The Delaware team added more to the tournament than just a victory over Indiana. Unlike the professional nonchalant attitudes of most of the teams, the Hens whooped and hollered in one of the tournament's greatest displays of enthusiasm during progress of the game. When the final out was recorded, jubilant players swarmed afield in the fashion of a winning World Series team.

AGAINST UCLA

It was a different story against the Bruins later that night in the only night game that the Hens had to play.

Bill Bonham, one of

UCLA's fine pitchers revised the Riverside Tournament strikeout record at the expense of the somewhat hapless Hens and pitched what his coach Art Reichle termed "the finest pitching job by a UCLA player in years."

Bonham struck out 17 Delaware batter, walked only one and scattered four hits to pitch the Bruins to a 6-1 victory over Delaware.

TREMENDOUS JOB

"Bonham did a tremendous job," Delaware's Bob Hannah said after the game. "He kept the ball around the knees and we had a lot of trouble with him. Playing under the lights was a marked disadvantage for us since it was the first time for many of our ballplayers at night. We probably would have done better during the day."

The effects of the lights varied among the Hen players.

"It took me two at bats to see the ball," co-captain Rick Hale said. "The ball comes up on you much quicker, and hurts the batter. The field we played on (Evans Park) didn't have a very good set of lights, which hurt us even more."

"I have played night baseball before," outfielder Bruce Fad said, "and like baseball under the lights better. It's easier to follow the ball at night."

QUICK LEAD

UCLA jumped out to an early lead with two unearned runs off starter Steve Tissot in the first inning. The Bruins added another in the third and three more in the eighth as a tiring Tissot let up a triple and three singles.

The Hens broke onto the scoreboard in the ninth on Yates' single, an error on a potential double play ball by the UCLA second baseman, an infield out and Hale's sacrifice fly to center.

Tissot allowed four earned runs in eight innings, struck out five and walked two. Ron Powell retired the Bruins in order in the ninth.

Wednesday was an off day for the Hens and the eastern visitors trooped to see the wonders of Disneyland.

TOUGH SCHEDULE

Thursday was the toughest day of the schedule for Delaware. In the morning the Hens went twelve innings in losing to Brigham Young and then later that afternoon met a professional type Southern California team.

The BYU game was one of the wildest games of the entire tournament. During the four hour thriller, 27 runs crossed the plate and 32 hits were belted out by both teams.

Doug Howard led the BYU contingent of hitters as he belted out a booming homer, doubled, and singled in regulation time, then doubled two runs over in the 12th inning as the Cougars topped the Hens 15-12, before a crowd of

(Continued to Page 23)