

**MISSING
PAGE(S)**

LIFESTYLE

C section

The NewArk Post

March 10, 1988

by Dorothy Hall

HOME
FRONTLife is full of
'flaky whimsies'

Remember the flaky whimsies I wrote about last winter? A quick refresher in case you've forgotten — flaky whimsies are events that will not improve the lot or future of me or humankind. They do, however, have a delightfully weird and quirky eccentricity that grabs my attention by the throat and leaves me cross-eyed with laughter and bright green with envy wishing that I had thought them up. A vintage flaky whimsy makes me begin with a titter that grows through snickers, cackles, chortles and ends up with bell-rumbling guffaws.

Last year's bouquet of flaky whimsies included the man from southern California who tied a bunch of weather balloons to a lawn chair and rode it 15,000 feet where his appearance started an interesting dialogue between two airline pilots and an air traffic controller. It is worth reporting that after landing safely, he was arrested by the ever-vigilant FAA for invading controlled airspace with a lawnchair.

The second incident involved a Michigan man who felt compelled to take a stand against the Gray Winter Drearies. He filled his fertilizer spreader with fluorescent orange water paint and proceeded to paint beautiful orange squiggles, loops, and curls, and spirals on a frozen lake.

The third flaky whimsy happened not too far from here. It was the First Annual Pumpkin Catapulting Contest in Mr. and Mrs. Thompson's cantaloupe field outside Gravel Hill, Delaware. Mr. Thompson, known as "Broad Dog" to his friends, won that contest with a fling of 178 feet.

I am happy to report that the Second Annual Pumpkin Catapulting Contest was held in November in the very same cantaloupe field. To several people's chagrin — especially the Burton brothers whose pumpkin was lobbed to second place last year — Broad Dog made it two in a row with a fling of 496 feet.

This year's event drew one team from as far away as Cherry Hill, New Jersey. Sadly, their machine, the Moose Gooser, hurled its missile a paltry 25 feet. Biotechnology even got involved when "Captain Speed" of Lewes hurtled aerodynamically designed pumpkins grown especially for him in North Carolina.

Anyone interested in renting a bus for next year's event?

Adding an international flavor to this year's list of flaky whimsies is the entry from my Italian correspondent. An artist named Elio Ciola created a 94 by 14 foot mosaic in Levico Terme, Italy. Not such a big deal, you say. It is when you realize that the mosaic was composed of 38,990 multi-colored, hard boiled eggs. Signor Ciola was trying to break the world's record for hard boiled egg art. I would have thought that a mosaic of 3 by 5 feet would have done the trick. Just shows how much I know about hard boiled egg art. After three weeks in the sun, care to guess what won the award for the world's smelliest mosaic?

Oregon furnishes my next final flaky whimsy. The elephants in the Portland's Washington Park Zoo weren't getting enough exercise. Seems they mostly stood around, swinging their trunks, gossiping and getting fat. Someone decided the elephants needed aerobic exercise to stay healthy. Have any of you thought about designing a workout routine for elephants? I haven't. I bet Jane fonda and Richard Simmons haven't either. A sweaty elephant doing leg lifts, with or without a tutu, is not something I'd like to have next to me in my aerobics class. Have you ever wondered if elephant leg warmers come in sets of 2 or 4?

A zoo keeper came up with the solution. Noticing that elephants have a real fondness for apples, she borrowed a pitching machine from the local baseball club, loaded it with apples, set the dial for random-direction-pitching, and turned on the machine. Viola, the elephants do "aerobic apple chasing."

What a sterling idea! If they loaded that machine with Twinkies, butter pecan ice cream, or double cheese pizza, I bet a lot of us would be willing to take up elephantine aerobics.

© Dorothy Hall 1988



Artist John Heller of Meeting House Hill has found that the Brandywine River School of painting "is a regional style that gets into your system."

John Heller
trades badge
for brush

by Nancy Turner

As a law enforcement officer, detective John M. Heller routinely confronts violence, suffering and the worst possible deeds of his fellow human beings. But when the day is done, Heller trades his gun in for a paint brush and seeks the natural beauty and tranquility of a world full of white washed barns, rolling hills and faithful hounds.

A Newark resident of 20 years, Heller paints with a style similar to that of Andrew Wyeth, Howard Pyle and other famous artists of the "Brandywine school." His art candidly focuses on those small unnoticed elements of country life that are most valued for their simplicity.

Heller began his career in urban law enforcement as one of Wilmington's finest in 1958. Today, he is the deputy chief detective of the State Department of Justice's Office of the

Attorney General.

In his 28 years of law enforcement duty, Heller has earned the rank of captain with the Wilmington Police Department, commanded the governor's investigative strike force and received a number of commendations for outstanding service.

He has helped knock down doors on vice raids, investigate serious crimes, and traveled miles across the country to expedite Delaware's fugitives from justice. And once, he saved a life by pulling a man from a burning car.

Heller formally pursued his career in art by attending West Chester State College, where he studied under Gus Sernas and graduated Summa Cum Laude with a bachelor's degree in 1977.

The same year, the artist conducted a seminar on painting techniques with alkyd oil

colors at the Hotel duPont which was sponsored by Audio Visual Arts and Windsor and Newton Company.

He has exhibited locally in galleries statewide and painted a number of murals throughout the area, one of the earliest murals being located in the Children's Library of Kingswood United Methodist Church on Marrows Road in Newark.

In July of 1983, he was invited to show his work in the "American Show" at the opening of Le Salon Des Nations at the Centre International D'Art Contemporain in Paris with a select group of contemporary American painters.

Heller's professional law enforcement experience has made him an asset in Delaware's fight against crime, but his love for pain-

See HELLER/5c

Storyteller Stivender
to visit Newark Y

Once upon a time, the Newark Center YWCA decided to hold a Family Fun & Fantasy festival.

And they decided, what better way to entertain the family than with a "once upon a time" specialist?

And that is how it came to pass that Ed Stivender, a self-proclaimed "story teller, minstrel and banjo-playing medieval fool," was contracted as lead performer in the YWCA's special event planned noon to 5 p.m. Sunday, March 20.

Stivender, who lives near Philadelphia, has toured the eastern United States and Canada since 1975, performing his one-man shows at theaters, folk festivals, college campuses and even off-Broadway.

He was featured at a National Storytelling Festival in Tennessee, hosts the weekly "Myth America" radio show on WWUH-FM in Hartford, Conn. and has appeared on NBC's "Today Show."

Stivender, who calls storytelling a "low-tech, inexpensive form of live performance," brings to life the characters of European and American folklore.

According to an Associated Press account of his work at the National Storytelling Festival, Stivender tells "intensely personal and slightly twisted" versions of such classic stories as "Cinderella" and "The Princess and the Frog."

See YWCA/2c

Miss New Castle C'ty
pageant set April 10

First two entrants announced

The inaugural Miss New Castle County Pageant, a preliminary to the Miss Delaware Pageant, will be held at 7 p.m. Sunday, April 10 at the Delmarva Power Company Conference Center on Old Baltimore Pike.

The pageant is sponsored by the Glasgow Lions Club.

Registration for the event will be held 7-9 p.m. Saturday, March 12 in the main lobby of the Delmarva Power building on Eagle Run Road.

Already, the organizing committee has had its first two entrants. The contestants are Vicki Swoboda of Dunsinane Drive, New Castle, and Pattie Ford of Eighth Avenue, Wilmington.

A graduate of William Penn High School and Hodgson Vocational-Technical School,

Swoboda is a credit assistant with the Lomas Bank. She also works as a baton twirling and dance instructor for Donna L. Stiles at the La Danse Centre in Basin Road Plaza.

Ford is a graduate of St. Elizabeth High School and Davis and Elkins College in West Virginia. She is experienced in pageants, having won the titles Miss Greenville and Miss Wilmington and having been second runner-up for the Miss Delaware-USA title last year.

Winner of the Miss New Castle County Pageant will compete for the title of Miss Delaware. That winner, in turn, will vie for the Miss America crown.

For information on volunteering to assist in planning the pageant, on competing or on sponsoring contestants, call 834-1100.

LIFESTYLE

LIFE CALENDAR

• March is National Nutrition Month, and the American Heart Association is offering a dial-a-dietician program for painless tips to promote healthy eating habits. Liela Glidden, a University of Delaware senior studying dietetics, will be on the line at 654-5269 from 10 a.m. to noon Tuesday through Thursday.

• The Self Help for Hard of Hearing People (SHHH) organization will meet at 7:30 p.m. Monday, March 14 in Christ United Methodist Church, 6 Clifton Ave., Elsmere. Barbara Ryser will discuss "Success in Business Despite a Hearing Impairment." For details, call 239-6392.

• A Freedom From Smoking clinic will be held 7-9 p.m. Mondays, March 14-April 18 at the Silverside Medical Center, 2700 Silverside Rd., Wilmington, by the American Lung Association of Delaware. Cost is \$35. Call 655-7258.

• The Delaware chapter of the National Multiple Sclerosis Society will hold an information seminar on memory improvement at 7:30 p.m. Tuesday, March 15 in the second level auditorium of Boscov's in the Concord Mall. Guest speaker will be Dr. Ralph Ferretti of the University of Delaware, who will discuss the mechanisms behind fact retention and memory loss. He will also provide practical tips for improving memory. For details, call Sheila Jabloner at 571-9956 or 734-5471.

• The American Lung Association is offering a family asthma program at 7 p.m. Wednesdays, March 16-30, at Mount Pleasant High School, Marsh Road, near Wilmington. The program is designed for families in which there are

children ages 6-12 who suffer asthma attacks. For details or to register, call 655-7258.

• Union Hospital, Elkton, Md. will hold a class on "The Right Stuff for a Healthy Heart" 7-8 p.m. Wednesday, March 16. It will concentrate on cholesterol-lowering diets. Cost is \$5 in advance, \$7 at the door. Call the Health Promotion Department at 731-0743, ext. 1277.

• The Muscular Dystrophy Association is holding a fund raising shamrock sale through March 17, St. Patrick's Day. Delaware restaurants and taverns are selling cardboard shamrocks to patrons for \$1 each, with funds going to MDA.

• A seminar entitled "Quality Child Care: Reality and Vision" will be held 4-5:30 p.m. Tuesday, March 29 at the Academy of Medicine, 1925 Lovering Ave., Wilmington, by Child Care Connection, the YWCA of New Castle County and the American Academy of Pediatrics. Cost is \$10, and deadline is Tuesday, March 15. For details, call Child Care Connection.

• Infertility Support of Delaware has been established to help couples cope with infertility. The goal of the organization is to provide emotional support and information about infertility. Membership offers support groups, regular meetings and special interest groups. For details, call Jane at 239-2656, Laura at 737-7593 or Candy at 738-4486.

• Planned Parenthood of Delaware has started AIDS education and counseling programs, including tests for the HIV virus which causes AIDS. For information on Planned Parenthood programs, call 655-7293.



Peter Congo, 3, gives his new Mercedes a lift.

Photo/Robert Craig

'Time to Care' will be AAUW theme

"Time to Care" is the theme of the 1988 Delaware State Convention of the American Association of University Women to be held on Saturday, March 19, from 9 a.m. to late afternoon at the Colony Inn, Del., 1 in Milford.

Focusing on women as caregivers, the program reflects the fact that despite education for careers and full-time work outside the home, women are still the most responsible for care in the home and community.

Two of the afternoon workshop speakers are from Newark. Marianne Ehrlich, assistant director of career planning and placement at the University of Delaware, will speak on marketing volunteer skills. Bess McAneny will show slides of the University of Delaware Adult Day Care Center, where she is head nurse.

Also speaking at the adult day care workshop will be Joanne Gorlich, program director of the Laurel Adult Day Care Center. The third workshop choice will be on housing. The speaker will be Martha Harris of the Delaware Housing and Community Development Division.

The opening speaker will be Betty Richardson, child care administrator of the Seaford Headstart Program. She is assisting with the start-up of a similar program in Seaford and will speak on "Getting started With Headstart."

The conference will close with a talk by Gary Pallio, vice-president for allocations and planning at United Way of Delaware. He will speak on what needs to be done in Delaware. His division is responsible for membership into the United Way, priorities program planning, annual allocations process,

and initiatives funding. This year, United Way will distribute more than 11 million dollars to members.

The day's program will also include a brief business meeting for members and a luncheon. The annual state conference is open to anyone interested in

care, not just members of the American Association of University Women.

Cost of the conference is \$11. For more information, contact Joan Collins, Delaware Division program chairman, at 731-4039 or Linda Fischer, president of Milford branch, at 422-7103.

YWCA/from 1c

Cheryl Rusten of the Newark Center said the YWCA is extremely excited to have landed Stivender. "We're building the whole day around his being here," she said. "It's a day to come and be entertained, see good and unusual performances, and it's a chance to support the YWCA as well."

Stivender will perform at 1:15 p.m. and 2:45 p.m. Tickets to the performances cost \$2.50 for children 5-14, \$4 for adults. For reservations, call the YWCA at 368-9173.

Also featured during the Family Fun & Fantasy festival will be food, sales, swimming, art activities for children and a raffle.

Rusten said the festival will begin at noon, with hot dogs, pizza and bake sale for folks who wander in after church.

For sale will be children's books from Jonathan Dragon book store in Wilmington, and a huge selection of china and glassware from the YWCA kitchen, which is no longer in use. Rusten said there are a variety of plate, teacup and saucer patterns for those interested in stocking up for large dinner parties.

In addition, there will be a silent auction for silver service no longer needed by the YWCA.

Other activities include a free open swim noon to 12:45 p.m. and 3:30-5 p.m., art activities for the children and a raffle, featuring a used 12-foot aluminum rowboat complete with oars and oarlocks. For raffle tickets, contact the YWCA.

Coping with kid-stress

Nila Hill, a Christina School District psychologist, will discuss stress among children Thursday, March 17 during a meeting of the Newark Network.

The Network is a program for single parents and their children. Hill will tell parents how to recognize signs of stress in children, and suggest ways

to help children and families manage stress.

The meeting will be held in the New Ark United Church of Christ, 215 E. Delaware Ave. Dinner will begin at 6 p.m., followed by the presentation at 7 p.m.

The meeting is free. To register, call 737-4711.

AMERICA'S Favorite Store

the Saving Place

Sale Starts Wed., March 9 to Sat., March 12

AMERICA'S GARDEN CENTER

JERRY BAKER, AMERICA'S MASTER GARDENER, RECOMMENDS...

VISA
MasterCard
Discover

LOFTS

Kmart Sale Price **7.97**
Less Mfr.'s Rebate **-\$4**
Your Net Cost After Rebate **3.97**

After Rebate

3.97

Hyponex Lawn Fertilizer Fertilizer covers 5,000 sq. ft.

HYPONEX®

3-lb. Bag

2.66

Lofts Green Acres Grass Seed

Fast germinating—quick to establish. Germinates in 5 to 7 days. Fast repair of bare spots.

Kmart Sale Price **2.47**
Less Mfr.'s Rebate **-.80**
Your Net Cost After Rebate **1.67**

Hyponex 40-lb. Potting Soil All-purpose soil, 40-lb. size.

99¢ 50-LB. Bag

Pulverized Lawn & Garden Limestone. Fast acting to sweeten your soil.

*Net wt.

3.28 3-lb. Bag

Lofts Backyard Grass Seed

Fast germinating. Germinates in 5 to 7 days. For sun and partial shade. Fast repair of bare spots.

2.88 1.50 lbs.*

Miracid® or Miracle-Gro®

For all your indoor & outdoor garden needs.

*wt.

Dr. Thomas Velotti

Foot Specialist *Podiatrist*

ANNOUNCES NEW LOCATION OF HIS OFFICE AT

122 E. Main St., Elkton, Md.

- Bunions
- Hammertoes
- Ingrown Nails
- Sports Medicine

- Heel Spurs, Heel Pains
- Infant Foot Problems
- Corns & Calluses
- Warts

- Diabetic Foot Care
- Foot Injuries
- Foot Surgery
- Orthotics

Evening • Saturday Appointments Available **398-6009**

FIRST TIME EVER!

FREE DYNASTY QUARTZ CLOCK

With your purchase of a Complete Contact Lens and Deluxe Eyewear Package. Hickory Pecan Wood Finish, never needs winding.

Retail \$89.50

AND GENUINE LEATHER WALLET

Ladies' or Men's with any Contact Lens or Deluxe Eyewear Package.

Retail Value \$21.00

DAILY WEAR SOFT CONTACT LENSES

• All types Contact Lenses are available at considerable discounts

• Extended Wear Clear or Cosmetic Color

• Wesley Jensen Dura-Soft® Colors

• Gas Permeable

• Bifocal

\$19.00

With Package Reg. \$60.

VISION PACKAGES FOR EYEGLASSES

SINGLE VISION **\$49.00** Reg. \$72.

BIFOCAL VISION **\$59.00** ST-25 Reg. \$92.

INCLUDES:

- Complete eye exam
- Frame from Group A
- Most prescriptions in clear glass

OPTICAL LAB ON PREMISES. ONE DAY SERVICE ON MOST PRESCRIPTIONS. All examinations performed by State Licensed Optometrists. Complete examination includes: prescription for glasses and contact lenses when indicated.

SAVE-SAVE-SAVE-SAVE on DESIGNER EYEWEAR

TURA • AVANTA GARDE AND MORE!

THEIR PRICES TOO HIGH? GIVE US A CALL...

EYE DOCTORS CENTER

OXFORD MALL • RT. 10 • OXFORD, PA

(215) 932-2020 • (215) 932-2646

CHECKS ACCEPTED
MOST MAJOR INSURANCE PLANS ACCEPTED
APPOINTMENT PREFERRED
CONVENIENT EVENING HOURS
(Only 20 Minutes from Newark & Elkton)

Available At Your Local Kmart

COMMUNITY FILE

• New Castle County 4-H's Let's Be Friends handicapped awareness program is seeking volunteer puppeteers. Through the program, 4-H will offer puppet shows to elementary classrooms throughout the county. A skit featuring life-size puppets — one handicapped and one not — will emphasize the similarities between all children.

"After the puppet presentation, the participants will have a chance to ask questions about the handicapped and can visit different learning stations where they can try on equipment used by handicapped children," said Mark Manno, New Castle County 4-H agent.

The program is sponsored by the Fantastics 4-H Club of Newark. However, volunteers need not be 4-H members. A training session will be held 9 a.m. to noon Saturday, May 7 in the University of Delaware's Townsend Hall on South College Avenue. For details, call 451-8965.

• New Castle County 4-H members participated in the Favorite Foods Contest in

Newark last month, and among the winners were sisters Jennifer and Sarah Crouse of Newark. Jennifer won first place in the senior (age 14 and older) fruits and vegetable category. Sarah won honorable in the beginner (8-11) bread category.

Other local winners were: Cecilia Taylor of the White Oak Club, first place in the Valentine's Day theme category for a bread basket dip; Amy Johnson, honorable mention, junior (12-13) desserts category; Nicole Norman, first place, junior meat and main dish category; Marybeth Miller of the Meado-Larks Club, first place in the beginner meats and main dish category for her breakfast pizza.

• Chesapeake Bay Council Girl Scouts will honor five area leaders during a banquet Friday at the Hotel duPont in Wilmington. Recognized will be Patricia Kent of the University of Delaware, Joan Reiter of West End Neighborhood House, Faith Whol of DuPont Co., Lauren Wilson of WPVI-TV and Dr. Rita Meek of Shallcross Medical Center.

Easter Seal Society marks 40th birthday



Dawn Arms, Easter Seal ambassador, smiles as Gov. Michael N. Castle signs a proclamation declaring March "Easter Seals Month" in Delaware.

The Easter Seal Society of Del-Mar is celebrating 40 years of service to children and adults with disabilities. On the anniversary of its incorporation, Gov. Michael Castle has proclaimed March "Easter Seals Month."

"We hope this month of celebration will encourage awareness of the needs and potential of people with disabilities," said Sandra Kother, executive director of the Easter Seal Society. "We're looking back on 40 years of success, and also looking forward to many more years of service."

Although Easter Seals currently serves more than 9,900 individuals annually, Kother points to existing case loads and waiting lists as evidence of the growing demand for service.

"With the trend away from institutionalizing the disabled, more people are in need of training for independent living and job skills," she said. State agencies such as the Department of Vocation Rehabilitation, Division of Mental Retardation and Department of Public Health also look to Easter Seals for con-

tinued and expanded services for the disabled.

Preparing to meet the growing needs, the Easter Seal Society of Del-Mar is focusing on plans for future expansion, of both services and facilities.

In New Castle County, Easter Seals will combine its headquarters and the Easter Seal Rehabilitation Center in a new 20,000 square foot building, providing permanent housing for quality programs and more efficient operations.

The Rehabilitation Center in Georgetown, Delaware, will acquire an additional 3,000 square feet of space in its move to a new Professional Office Park.

Renovations and expansion of Camp Fairlee Manor in Chestertown, Maryland, will allow for a more comprehensive program — serving even more disabled children and adults on a year-round basis.

The completion of renovations, additions and new facilities will enable Easter Seals to operate more cost effectively and efficiently, says Kother.

NEW

SEAS' BEST, INC.

FRIED SEAFOOD DINNER MENU

PLATTERS:

- BREADED SHRIMP DINNER *5⁹⁵
5 Shrimp, Cole Slaw, French Fries
- BREADED SCALLOP DINNER *5⁹⁵
9 Scallops, Cole Slaw, French Fries
- BREADED CLAM DINNER *4²⁵
Clams, Cole Slaw, French Fries
- BREADED FISH DINNER *5²⁵
2 Pc. Fish, Cole Slaw, French Fries
- BREADED CRAB CAKE DINNER *4⁹⁵
2 Crab Cakes, Cole Slaw, French Fries
- BREADED SEAFOOD COMBO *7⁹⁵
2 Shrimp, 3 Scallops, 1 Pc. Fish
1 Crab Cake, Cole Slaw, French Fries



SANDWICHES:

- CRAB CAKE SANDWICHES *2⁵⁰
Served on a roll with Tartar Sauce
- FISH SANDWICHES *2⁵⁰
Served on a roll with Tartar Sauce

Carry-Out Only

Rt. 40
Elkton, MD

Call-In Orders
Welcome

(301) 398-9689
(301) 398-9690

NATIONAL

LA-Z-BOY®

RECLINER AND SLEEP SOFA

SALE

America's favorite way to relax
just got more affordable!

Your Choice
\$299

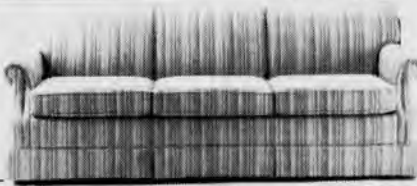
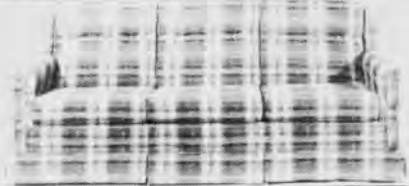


La-Z-Boy Signature II Sleep Sofas featuring
Supreme Comfort...the deluxe innerspring mattress!



CONTEMPORARY
77" QUEEN SIZE SLEEP SOFA
SALE \$599

COLONIAL
79" QUEEN SIZE SLEEP SOFA
SALE \$699



TRADITIONAL
77" QUEEN SIZE SLEEP SOFA
SALE \$699

Only at your **La-Z-Boy**
Showcase/shoppes®
The Upholstery Specialists!

NEWARK | **WILMINGTON**
Meadowood Shopping Center | 4723 Concord Pike, Wilmington, Delaware
2651 Kirkwood Hwy. Newark, Delaware | Near Concord Mall, next to the Sheraton
(302) 737-9800 FREE DELIVERY | (302) 478-1939 FREE DELIVERY
Hours: Mon. thru Sat. 10-9, Sun. noon to 5.
Up to \$1,000 Instant Credit to qualified buyers



75¢-A-DAY*

Buys Another
Diet Soda,
Or...



The Great Summer Body You Deserve.

These days, just the cost of a diet soda is 75¢. At Spa Lady, we're offering you the opportunity of a lifetime

...A chance to get your body in shape for summer fun at the Nation's Leading Fitness Centers for Women, for the cost of one diet soda—Only 75¢-A-Day*.

□ Body Band & Low Impact
Aerobics □ High Energy
Precision Aerobics □ 19
Minute Workout—Aerobic
Circuit Training □ Muscle
Toning Equipment

Spa Lady

□ Certified Instructors □ Personalized Fitness
Programs □ Individualized Diet and Nutritional Plans
□ Soothing Rock Sauna and Steam Room □ Hot
Bubbly Hydro Whirlpool □ Suntanning Lounges
□ Professional On-Site Childcare □ 43 Owned and
Operated Spas for Greater Convenience

Think about it; the choice is
yours. Another diet soda, or...
Great Summer Looks for Only
75¢-A-Day*. Here's an offer too
good to miss. Call Today.

Come In Today For A Visit.

Big Elk Mall
Elkton, MD
(301) 398-8786

*75¢ a day for 60S continuous days for a one-year non-renewable membership, plus \$100 enrollment fee. Limited to spa where enrolled. Monthly payments available. Services, facilities, hours and memberships may vary at each location.

by Phil Toman



THE ARTS

Common Wealth Awards
recognize three int'l artists

John J. Goodier, vice president for public affairs at the Bank of Delaware, has some exciting news for lovers of the fine and performing arts. John works with the Common Wealth Awards which yearly recognize excellence of achievement and high potential for contributions to many fields of endeavor. This year half of the awards went to people in the fine and performing arts!

The Common Wealth Awards are part of the Common Wealth Trust managed by Bank of Delaware. The trust was established under the will of Ralph Hayes who combined a distinguished career with a lifelong commitment to public service.

More good news from John. This year marks the first in the nine year history of the awards that they are all being presented here in Delaware, not scattered around the world. That has been a three year goal of Mr. Goodier and he finally was able to convince others. The awards will be presented at a black tie dinner at the Hotel du Pont next Saturday, March 19.

Today, I want to share with you information about the winners in the dramatic arts, literature and mass communications areas — areas near and dear to anyone interested in reading this column.

The winner for literature is internationally known as one of the outstanding representatives of Soviet post-Stalinist "younger poets." He was cited for the freshness and originality of his treatment of contemporary social themes, his experimental vocabulary and rhythms and his rather bold fusions of prose and poetry. His name is Andrei Andreevich Voznesensky.

The winner first earned critical acclaim in 1958 with "Masters" and "Goya." "Parabola" and "Mosaic" came in 1960, "Antiworlds" in

1964, "A Look" in 1972, "Temptation" in 1978 and "An Arrow in the Wall" in 1987. Voznesensky's poetry has been translated into all the major languages, sometimes by world renowned poets.

The mass communication award honors a photojournalist, movie director, composer and author, a man who has been described by many as a true Renaissance man, Gordon A. Parks.

Parks' photos have captured not only the outward scenes of this country but its inner heart as well. He is the real pioneer of what we call "photojournalism." He was with Life magazine for 24 years. That led him into motion picture photography and he directed for both Warner Brothers and Metro-Goldwyn-Mayer. His first novel, "The Learning Tree," was adapted for film by Warner Brothers and the multi-talented Parks then signed on to do the musical score for the film.

The dramatic arts award was captured by Lloyd Richards, now in his ninth year as dean of the Yale School of Drama. Before joining the faculty at New Haven, Richards established himself as an artist, educator, innovator and administrator in numerous dramatic fields. He also acted and directed on and off Broadway, in radio and television.

His major recognition began when he directed "A Raisin in the Sun." Then came successes in "Ma Rainey's Black Bottom," "Fences" and "Joe Turner's Come and Gone." Television acclaim was earned for directing credit in "Roots," two segments of "You Are There," Bill Moyer's "The Next Generations" and "Medal of Honor Rag."

I think you will agree that the Common Wealth Awards have done a super job this year in recognizing top talent in the fine and performing arts.



The winners of the Common Wealth Awards in the fine and performing arts categories are (top) Lloyd Richards in the dramatic arts, (left) Gordon A. Parks in mass communication and Andrei Andreevich Voznesensky in literature.

St. Patrick's concert features LINX

A special St. Patrick's musical celebration, featuring the music of LINX, will be held Saturday, March 19 by Newark's Green Willow Folk Club.

The evening of song and dance will begin at 7 p.m. in The Network Center for the Performing Arts, East Delaware Avenue and Haines Street. LINX, a group featuring two English and two American members, will take the stage at about 8:45 p.m.

According to Chris Rewa of Green Willow, the event is being planned to celebrate both St. Patrick's Day and the wealth of musical talent found in the Newark area.

"While Newark is rich in rock 'n' roll and reggae, it also abounds in English, Scottish and Irish traditional and contemporary music," said Rewa, who noted that local musicians gather the first Wednesday of every month at the East End

Cafe, 270 E. Main St., for a Celtic "jam" session.

Saturday's featured performers are members of LINX, two of whom are local and two of whom hail from Manchester, England. "Combining their unique American and English talents, LINX produces a sound that will appeal to fans of music from either side of the Atlantic," Rewa said.

In addition, several local musicians will perform in the in-

formal concert setting. There will also be a jig workshop and "mini-ceilidh" (pronounced kay-lee, Gaelic for dance). "If you've never danced an Irish jig to a live band," said Rewa, "you must seize the opportunity."

Tickets cost \$5. For details or reservations, call the Green Willow at 731-8832.

The club also sponsors concerts the third Saturday of each month at The Network Center for Performing Arts.

NEWARK CLUBS

- The Snap, Friday, March 11, Stone Ballroom.
- The Dead Milkmen, Saturday, March 12, Stone Ballroom.
- ELQ, Sunday, March 13, Deer Park Tavern.
- Flamin' Caucasians, Monday, March 14, Stone Ballroom.
- Gossamer Wings, Tuesday, March 15, Deer Park Tavern.

- Montana Wildaxe, Tuesday, March 15, Stone Ballroom.
- 3 Swell Joes, Wednesday, March 16, Deer Park Tavern.
- Ladies night with Batman, Wednesday, March 16, Stone Ballroom.
- Group Therapy, Thursday, March 17, Stone Ballroom.
- Chatter Band, Friday, March 18, Stone Ballroom.

- New Potato Caboose, Saturday, March 19, Stone Ballroom.
- Countdown, Sunday, March 20, Deer Park Tavern.

- The Network, a center for the performing arts located at East Delaware Avenue and Haines Street, offers dancing

every Friday night. Music spans the decades from the 1950s to the 1980s, and an area is reserved for those who want to engage in conversation. Hours are 8 p.m. to midnight, and admission is \$2. The events are sponsored by the Dance Network and the New Dance Studio.

ENTERTAINMENT FILE

• Disk Jockey Bobby Russell of WZON in Bangor, Maine will soon join Sue Serio as co-host of WSTW-FM's morning show. Russell, who doubles as a stand-up comedian and musician, replaces John Wilson. He will join the station Monday, March 14.

• Readings by Mike Walsh, editor and publisher of the literary magazine Espresso Tilt, will be given at 8 p.m. Friday, March 11 in the L.B. Jones Gallery, 709 Tatnall St., Wilmington. Walsh will read from his recently-published book of short stories, "The Properties of the Moon and Other Experiments." The reading is free and open to the public. Call 658-1948 for details.

• A two-day workshop on stage lighting will be held March 19-20 at the Chapel Street Theatre in Newark. Conducted by Sharon Mozdin, the workshop will concentrate on the technical aspects of setting stage lights, but will also cover lighting design. Hours are noon to 4 p.m. Saturday, March 19 and 8-9 p.m. Sunday, March 20. The fee is \$20, which includes the cost of a lighting template. The workshop is limited to 12 participants. For details, call Chapel Street Theatre at 368-2041.

• The Delaware Camera Club will sponsor an all-day seminar on portraiture Saturday, March 19 at the Academy of Medicine, Lovering Avenue and Union Street, Wilmington. Fee is \$17, payable at the door.

LIVE
Music

THIS WEEKEND:
March 11-
"Both Barrels"
March 12-
"Pistol Whip"
Formerly Grover & The Greasers

COMING:
March 18- "Janine Walters Band"
March 19- "Reckless"
*Dress Code *ID Required
*Cover Charge \$2.00

Kitchen Open
Mon.-Fri. 11 AM-4 PM

Attitude Adjustment Hours
4 PM-6 PM

528 W. Pulaski Hwy.,
Elkton, Md.
(301) 392-5740
Mon.-Fri. 11 AM-2 AM.
Sat. 6 PM-2 AM

THE OFFICE

An Eating And
Drinking
Establishment

chapel street players
PRESENTS

ONE ACT PLAY FESTIVAL
"SPRING DANCE"
Directed by Marilyn Manson
AND
"HIGHLIGHTS FROM THE
BEST OF BROADWAY"
From The Best of Broadway Production

March 11 & 12 - 8:15 PM
Tickets \$6.00 Call 368-2248

Chapel Street Players Theater
7 N. Chapel St., Newark, De.

We would like to see
more of our
local friends...

VALUABLE COUPON

Buy 1 Meal
Get 2nd for 1/2 Price
(Of Equal or Less Value)
Offer good on Breakfast, Lunch or Dinner at Aunt Nannie's
Expires March 14, 1988

(NP)

Home-made Pies & Breads
10% Senior Citizen Discount

Aunt Nannie's
Family Restaurant

Elkton-Newark Rd. Elkton, MD (301) 398-7000
1.95 AND MARYLAND RT. 279 MIDWAY BETWEEN ELKTON & NEWARK
PLAY THE LOTTO! BUY YOUR TICKETS HERE!

ENTERTAINMENT CALENDAR

THEATER

• "Annie Get Your Gun," the popular Irving Berlin musical, will be staged at 7:30 p.m. Friday and Saturday, March 11 and 12 at Glasgow High School by the school choral music and theater departments. Tickets cost \$4 for adults and \$3 for students and senior citizens, and will be available from cast members or at the door.

• "Spring Dance" by Horton Foote and "Highlights from the Best of Broadway" will be staged at 8:15 p.m. Friday and Saturday, March 11 and 12 by the Chapel Street Players in the Playhouse, 27 N. Chapel St. Admission is \$6. For tickets, call 368-2248.

• "P.S. Your Cat Is Dead," by "A Chorus Line" co-author James Kirkwood, will be open Friday, March 11 at the Wilmington Drama League, Lea Boulevard. The show will run March 11-12, 18-20 and 25-26. Tickets cost \$8 for adults, \$5 for students. Call 655-4982 for reservations.

• "Family Theatricals at Rockwood," a two-act comedy by P.J. Smith, will be performed March 11-13 and 18-20 in the 19th century manorhouse at Rockwood Museum, 610 Shipley Rd., Wilmington, by the Rockwood Family Players. The play depicts a hectic day in the life of the Brinckhurst family and their servants, who inhabited Rockwood from 1892 to 1965. Performances are scheduled 8 and 9:15 p.m. Fridays; 6, 7:15 and 8:30 p.m. Saturdays; and 2, 3:15 and 4:30 p.m. Sundays. Tickets cost \$10. For reservations, call 571-7776.

• Jerry Seinfeld and Carol Leifer will appear at 8 p.m. Saturday, March 12 in Wilmington's Grand Opera House as part of the Grand Supercomics Series. Tickets cost \$15. Call 652-5577. Other comics appearing in the series are Monty Python's Graham Chapman April 6, and Bob Nelson May 27. There is a discount if you purchase tickets for more than one show.

• "Nightingale," a children's opera by Charles Strouse, will be presented by OperaDelaware at 2 and 8 p.m. Saturday, March 19 at the Grand Opera House in Wilmington. The show is based on Hans Christian Andersen's fairy tale about China, with music by the composer of "Annie," "Applause" and "Bye Bye Birdie." Tickets cost \$12 for adults, \$6 for students. Call OperaDelaware at 658-2507 or the Grand at 652-5577.

• "Mark Twain Tonight," the one-man show with Hal Holbrook, will be held at 8 p.m. Saturday, May 21 in Wilmington's Grand Opera House.

Tickets cost \$19-to-\$25. Call 652-5577.

• "Finian's Rainbow" will be staged this summer by The Brandywiners on the outdoor stage at Longwood Gardens in nearby Pennsylvania. Shows dates are July 28-30 and Aug. 4-6. Tickets cost \$10 and may be reserved by writing: Brandywiners Ltd., P.O. Box 248, Montchanin, DE 19710.

MUSIC

• Pianist Navah Perlman, the daughter of violinist Itzhak Perlman, will perform at 8 p.m. Friday, March 11 at the Grand Opera House in Wilmington. Tickets cost \$12.50. Call 652-5577.

• The Syracuse Symphony Orchestra will perform at 8:15 p.m. Saturday, March 12 in Mitchell Hall on the University of Delaware campus. Featured will be music director Kazuyoshi Akiyama, violinist Elmar Oliveira and cellist Nathaniel Rosen. The Syracuse is the nation's 28th largest orchestra.

• A Sunday afternoon chamber concert to benefit the Newark Center for Creative Learning will be held at 3 p.m. March 13 in the Cornell home, 120 Kells Ave., Newark. Featured players are Ann Brown on piano and harpsichord, Sally March 13 concert will feature the Brahms Sonata. Tickets cost \$10, and proceeds benefit the NCCL Financial Aid Fund. For details, call Ann Brown at 368-7772 or 368-5104.

• The Delaware Symphony Repertory Orchestra will perform at 7:30 p.m. Sunday, March 13 at the Wilmington Music School, Washington Street, Wilmington. The program will feature Mozart's Impresario Overture, Franck's Symphony in d Minor and the Shostakovich Piano Concerto No. 2. Special guest performer will be pianist Susan Fou, a student at St. Mark's High School. Tickets cost \$4, and will be available at the door.

• D.J. Hildebrandt, trombone instructor at the University of Delaware, will present a faculty recital at 8 p.m. Wednesday, March 16 in Loudis Recital Hall of the Amy duPont Music Building, Amstel Avenue and Orchard Road.

• The Wilmington chapter of the Society for the Preservation of Barbershop Quartet Singing in America will hold its 44th annual show, "Some Like It Barbershop," March 18-20 at the Salesianum School, 18th and Broom streets, Wilmington. Showtime will be 8 p.m. Friday and Saturday, March 18 and 19, and 2 p.m. Sunday,



The University of Delaware Chorale is Finland-bound.

UD Chorale will perform in Finland

50-voice student ensemble will hold 'bon voyage' concert Wednesday

The University of Delaware Chorale has been invited to tour Finland March 18 to April 1 by the League of Finnish-American Societies.

The invitation is related to the 350th anniversary of the founding of the Swedish and Finnish colony in Delaware. This year is the state's Year of Friendship with Finland.

The 50-voice student ensemble, under the direction of Dr. Andrew Cottle, will perform in major concert halls, churches and universities throughout Finland.

A "bon voyage" concert will be held by the Chorale at 11:30 a.m. Wednesday, March 16 in the Choir Room

of the University's Amy duPont Music Building, Amstel Avenue and Orchard Road. The community is invited to see the Chorale off.

Members of the Chorale from the Newark area include: Betsy Kent, pianist, Joseph Ambrosino, Andrew Barrett, Michael Congdon, Sharon Correll, Katherine

Cottle, Gary Duzan, Marjorie Eldreth, Amy Gee, Paul Goodman, Christi Griffin, Cynthia Griffin, Quinn Kerane, Michelle Loving, Adam Martinelli, Dawn Padmore, Chris Pennington, Darrin Peters, Mark Prettyman, Dana Rossell, Gary Seydell, Carol Stapleford, and Carolyn Zsoldas.

March 20. Tickets cost \$8. Call 996-4379.

• The Green Willow Folk Club will celebrate St. Patrick's Day with an evening of music Saturday, March 19 at the Network for the Performing Arts, East Delaware Avenue and Haines Street. Featured will be the group LINX, with two English and two area members. Music will begin at 7 p.m., with LINX at 8:45 p.m. Tickets cost \$5. Call 731-8832.

• The First State Symphonic Band will present Vincent Marinelli in concert at 3 p.m. Sunday, March 20 in A.I. duPont Middle School near Greenville. Clarinetist Marinelli, a well-known teacher and professional musician in northern Delaware, will perform the Von Weber "Concertino." Other selections include "La Belle Helene Overture" by Offenbach, "Suite De Ballet Copelia" by Delibes, the Bach chorale "My Jesus! Oh What Anguish," several marches,

and a special arrangement of the Navy Hymn "Eternal Father, Strong To Save." The band will be conducted by Lloyd H. Ross. Tickets cost \$5 for adults, \$3 for students and senior citizens, and will be available at the door.

• The Guarneri Quartet will perform at 8 p.m. Thursday, March 24 at the Grand Opera House in Wilmington. For tickets information, call 652-5577.

• Chorale Delaware will perform J.S. Bach's "Mass in B Minor" at 8 p.m. Friday, March 25 in Wilmington's Grand Opera House. The 40-member chorale, directed by William Owen, will be joined in the performance by the Delaware Symphony Chamber Orchestra and internationally acclaimed soloists Julianne Baird, Glenda Maurice, Jon Humphrey and David Arnold. Tickets cost \$10-\$20. Call 652-5577.

• The world premiere of

American composer Benjamin Lees' "Kalmars Nyckel" symphony — which commemorates the 350th anniversary of Swedish and Finnish settlers in what is now Delaware — will be held Tuesday, March 29 at the Grand Opera House in Wilmington. Concert tickets cost \$15-\$25. For reservations, call 658-7899.

ART

• UNICEF is sponsoring a display of artwork at the Newark Free Library, 750 Library Ave. The exhibition opens Friday, and will continue through March 31. It can be seen during regular library hours, 10 a.m. to 9 p.m. weekdays and 10 a.m. to 4 p.m. Saturdays.

• The 23rd University of Delaware Biennial Exhibition of Works On or Of Paper is be-

ing held in the University Gallery, located in Old College. The exhibition, which features works by 59 artists, will be in place through March 25.

• Sculptor John Schackerman is showing direct carvings in wood through March 31 in the L.B. Jones Gallery, 709 Tannall St., Wilmington. Schackerman, who has exhibited extensively in New York City, carves abstract organic forms from wood, always looking for the form inherent in the piece of wood.

• Tom Sain of Newark is exhibiting abstract paintings through March 31 in the Delaware State Arts Council Gallery I, Carvel State Building, 9th and French streets, Wilmington. Sain's designs originate from intuitive ideas and are painted using a layering process that employs diverse materials to create textural surfaces.

HELLER/from 1c

ting the beauty of the Brandywine Valley has helped him to cope with the high pressures of his job and balance daily living and the time he spends with his wife Betty and son Stephen.

"In law enforcement, we don't always see the best type of people in the world and this seems to help keep me from feeling bitter," said Heller.

"The Brandywine River School of painting is a regional style that gets into your system. You are drawn to it. I have become used to the style because I have lived here all of my life.

"The style is based on il-

lustrative technique. I like the attention to realism, detail and mood. I like rustic still life scenes from farms where I can find things that would normally go unnoticed, beautiful things like a cup on a shelf.

"I look for simple beauty. Sometimes I get it. Sometimes I don't. It is working by instinct, but it gives me a feeling of peace and tranquility."

Heller works on his paintings for four to five hours "at a stretch" in evenings and on weekends and, by popular demand, has doubled his output of still life oils during the past year.

While he does not employ the egg tempera technique, which was one of Andrew

Wyeth's trademarks, Heller does use transparent color glazes made up of thin layers of oil paint to achieve a stained glass window effect where light penetrates the paint surface. The diluted application of color is tedious and time consuming, but when used in the glowing white wash of barns the ripened red of a summer tomato, or in the surprise splashes of burnt rust on tin roofs, the highly illustrative technique creates animated bursts of brilliant color.

Heller's most popular paintings are from his "Sheldon's Farm" series, taken from the ramshackle remains of the old farm that once stood at Deacon's Walk. The scene has been painted from five dif-

ferent angles and seasons and has been reproduced in prints. "Early Dawn" from Chadds Ford, "Abandoned," and the "Gladys" series, named for Betty Heller's dearest school girl friend from West Virginia, Gladys Gerhart, have met with similar favor.

Most of these works are now owned by private collectors, although his recent creations are on permanent exhibit in the Justice Department of the State Office Building in Wilmington.

Heller's paintings will appear in the Delaware Flower Market's "Clothes Line Art Fair" in Wilmington Trust Building, downtown, and in the "Art on the Green" exhibit in New Castle later this year.

The Sunday Opera

Annual Radiothon Potpourri

Selections from many operas and our Annual Radiothon Fundraiser are on this Sunday. You may call in your pledge during the broadcast by dialing (302) 451-2701. We need your help this week to bring you opera the other 51 weeks. Please call in your pledge Sunday!

12 Noon - WXDR - 91.3 FM

Glasgow High School Presents
Irving Berlin's

"ANNIE GET YOUR GUN"

Fri. and Sat. Evenings
March 11th and 12th
Curtain Time- 7:30 P.M.

Tickets Available At Door
Adults: \$4.00
Students & Senior Citizens: \$3.00

CALL 454-2381

DOWN UNDER
RESTAURANT

Presents

T.G.I.F.

ADULT ALTERNATIVE
HAPPY HOUR

Business Persons Specials
Every Friday 4-7

Featuring: - Complimentary Pizza Bar
- Special Happy Hour Menu
- Imported Beer Specials
- Excellent 60's & 70's Music
provided by D.J. Mike Piorko

*The Down Under Restaurant is pleased to introduce Coors Draft to Delaware Friday, February 19th. Please come and join us for a great celebration.

End February's Big Chill -
See You At The Down Under

60 N. College Avenue, Newark, DE 366-8493

• THE QUALITY CHOICE •



In Newark
Comfort Inn

Send your out-of-town guests to the Quality place to stay in Newark. The Comfort Inn. We're conveniently located at I-95 (Exit 1) and College Avenue (Route 896), 2 miles from University of Delaware.

Features include an outdoor pool and a restaurant/lounge. Meeting facilities are available.

Comfort Inn

1120 S. College Ave. • Newark, DE 19713

For reservations call 302-368-8715 or toll-free

800-228-5150

COMMUNITY CALENDAR

FRIDAY 11

- The Delaware Museum of Natural History will offer a waterfowl identification course March 19 and 26, and the deadline for registration is today. Cost is \$30. For details, call 658-9111.
- Newark Senior Center, 9 a.m., bowling, Blue Hen Lanes; 9:30 a.m., AARP tax assistance, shopping; 10 a.m., Signing Group; 1 p.m., Senior Players rehearsal.

SATURDAY 12

- The 18th annual Delaware Wildlife Show, sponsored by Newark White Clay Kiwanis, will be open 10 a.m. to 6 p.m. today at Hodgson Vocational Technical School, Del. 896, Glasgow. Competition carving judging will be held at 1 p.m. Admission is \$3 for adults, \$2 for senior citizens. Proceeds fund Kiwanis community projects.
- The Delaware Mineralogical Society's 25th annual gem and mineral show will be held 10 a.m. to 7 p.m. at Brandywine Terrace, 3416 Philadelphia Pike, Claymont. Tickets cost \$2 for adults, \$1.50 for senior citizens and children 12 and older.
- The American Cancer Society's seventh annual antique and custom car show will be held noon to 8 p.m. at the Townsend Fire Hall. More than 40 automobiles will be exhibited. Cost is \$5. Children under 12 will be admitted free.
- The Diamond State Chapter of Sweet Adelines will sponsor a beef and beer night 7:30 p.m. to 1:30 a.m. at Our Lady of Fatima, Wilmington Manor, New Castle. Tickets cost \$30 per couple.
- The Miss New Castle County Pageant organizing committee will hold registration for prospective participants 7-9 p.m. in the main lobby of the Delmarva Power Company building on Eagle Run Road, opposite University Plaza shopping center. The pageant is a preliminary to the Miss Delaware contest.

SUNDAY 13

- The 18th annual Delaware Wildlife Show, sponsored by Newark White Clay Kiwanis, will be held 10 a.m. to 5 p.m. at Hodgson Vocational Technical School, Del. 896, Glasgow. Charity auction of carvings and other art works will begin at 2 p.m. Admission is \$3 for adults, \$2 for senior citizens.
- The American Cancer

Society's seventh annual antique and custom car show will be held 10 a.m. to 4 p.m. at Townsend Fire Hall. Admission is \$5. Children under 12 will be admitted free.

- The Delaware Mineralogical Society's 25th annual gem and mineral show will be held 11 a.m. to 5 p.m. at Brandywine Terrace, 3416 Philadelphia Pike, Claymont. Admission is \$2 for adults, \$1.50 for senior citizens and children 12 and older.
- "Mammals of Delaware" will be discussed at 2 p.m. at Brandywine Creek State Park, Adam's Dam Road, north of Wilmington. For details, call Bob Ernst at 655-5740.

MONDAY 14

- "Washington: The Indispensable Man" will be the topic when the Constitutional Readings and Discussions series continues at 7 p.m. in Newark Free Library, 750 Library Ave. Brian Greenberg of the University of Delaware will lead a discussion of James Thomas Flexner's book about Washington. The series is presented by the Friends of the Newark Free Library and the League of Women Voters of Greater Newark, and is funded in part by the Delaware Humanities Forum.
- The Newark Coin Club will meet at 7:30 p.m. in the cafeteria of Maclary Elementary School in Chapel Hill. There will be a program on Eisenhower dollars. For details, call Carl Reithe at 322-2822.
- The Delaware Group of the Sierra Club will meet at 7:30 p.m. at the Ashland Nature Center, Brackenville Road. Guest speaker will be Dr. Richard Lighty, director of the Mt. Cuba Center for Piedmont Flora. For details, call Shirlee Ladio at 429-1986.
- Scottish country dance classes are being held at 8 p.m. Monday nights at St. Thomas Episcopal Church, South College Avenue. The classes, which will continue through May 23, are sponsored by the Royal Scottish Country Dance Society. For details, call Margaret Sarner at 453-1290 or 366-2898.
- Newark Senior Center, 10 a.m., knitting instruction; 11 a.m., exercise; 12:30 p.m. canasta, movie; 12:45 p.m., bridge.

TUESDAY 15

- Newark Free Library, 750 Library Ave., will hold preschool story hour today. The program is designed for children ages 3½ through 6, and meets at 10:30 a.m., 2 p.m. and 7 p.m. For details, call the



Newark Girl Scouts take the initiative during a tailgate cookie sale Feb. 27 at the Castle Mall Exx-on.

Photo/Seva Raskin

library at 731-7550.

- The Delaware Genealogical Society will meet at 7:30 p.m. in the Library of the Historical Society of Delaware, 505 Market Street Mall, Wilmington. James Jackson, author of "The Golden Fleece," will discuss that famous Dover landmark.
- Newark Senior Center, 9 a.m., bowling at Blue Hen Lanes; 10 a.m., enjoyment bridge, Walking Group, Bible study; 10:30 a.m., Boscov's trip; 12:30 p.m., 500 and Tuesday After Lunch program entitled "Selling and Moving Tips," with Lily Lacter of Alden Bugher Real Estate.

WEDNESDAY 16

- Newark Senior Center, 9 a.m., chess; 10 a.m., art class, blood pressure, needlepoint; 12:30 p.m., pinocle, St. Patrick's Day celebration; 12:45 p.m., no bingo this week.

THURSDAY 17

- Jane Duffy of the Wilmington office of the Internal Revenue Service will discuss the new tax laws during a

University of Delaware Women's Club program at noon in Bacchus in the Perkins Student Center, Academy Street. The talk will cover general changes in the tax laws, as well as the special problems that face University faculty and staff — book royalties, tuition grants, and small real estate investments. The talk will be followed by a 30-minute question and answer session. The brown bag event is free and open to the public.

- The Friends of Ireland in Delaware will hold its annual St. Patrick's dinner/dance at 7 p.m. in the Gold Ballroom of the Hotel duPont in Wilmington. For details, call 655-0551, 764-0363, 836-0306 or 658-1386.
- Newark Senior Center, 9 a.m., ceramics; 10 a.m., Choral Group, Legal Aid, discussion; 12:30 p.m., Back When program, duplicate bridge; 1:30 p.m., Scrabble, Alzheimer's Support Group.

Wonka and the Chocolate Factory" at 7 p.m. Friday, March 18 in Downes Elementary School, Casho Mill Road. Refreshments will be served. Preregistration is \$1.50. If space is available, tickets will be sold at the door for \$2. Call 366-7060.

- The Newark Newcomers Club will hold its "Newest in Spring Fashions" show at 7:30 p.m. Tuesday, March 22 at Boscov's in the Concord Mall. Tickets cost \$4.50 in advance, \$5 at the door. For details, call 738-6360.

- The Newark Department of Parks and Recreation will hold its annual Easter egg hunt Saturday morning, March 26 at Carpenter State Park. Step off will be 10 a.m. for children up to three years of age; 10:20, 4-5; 10:40, 6-7; and 11, 8-9. Rain date is 2 p.m. Sunday, March 27. The event is co-sponsored by the White Clay Kiwanis.

- Mt. Cuba Astronomical Observatory, Greenville, is accepting registration for a modern astronomy course to be taught the evenings of March 29 and 31, and April 5, 7, 12 and 14. Cost is \$30. Send check to: Mt. Cuba Astronomical Observatory, P.O. Box 3915, Green-

ville, DE 19807. For details, call 654-6507.

- The Newark Department of Parks and Recreation is accepting registration for its spring break camp for children ages 6-12. The camp will be held 7:30 a.m. to 5:30 p.m. April 4-8 at the George Wilson Community Center. Cost for city residents is \$15 per day, or \$75 for the week. Cost for non-residents is \$17 per day, or \$85 for the

week. Advance registration is required. Call 366-7060.

- A bowling party for elementary school students will be held 1-3 p.m. Friday, April 8 at Blue Hen Lanes by the Newark Department of Parks and Recreation. Fee is \$5 for city residents, \$7 for non-residents. That include two games, shoe rental, pizza and soda. Registration deadline is Monday, April 4. Call 366-7060.

- The Newark Center YWCA is accepting applications for its 15th annual summer camp. The program is available to children ages 4-14 from 7 a.m. to 6 p.m. weekdays, June 20 through Aug. 26 at the YWCA, 318 S. College Ave. Cost ranges from \$50-\$60 per week, depending on age. For details, call the Newark Center at 368-9173.

FUTURE EVENTS

- The Newark Department of Parks and Recreation is accepting registration for a special screening of the film "Willie

IT'S UP TO YOU.



Who Will Be The Next NewArk Post Carrier Of The Month?

Now is your chance to vote for your newspaper carrier. If you feel your carrier is doing a good job in delivering your paper every week, let us know. Fill in the coupon below and return it to us. The carrier with the most votes for the month wins. Prizes differ every month.

Complete this coupon with your comments and send to: The NewArk Post
153 East Chestnut Hill Rd.
Newark, DE 19713

Your Name (optional) _____

Address _____

Development
(Include nearest cross street)

Comments _____

YOUR BEST FRIEND CAN MAKE YOU SICK.

The loneliness of life when your best friend is alcohol—is pretty bleak. Union Hospital's Chemical Dependence Program—Break-Free—is a seven-day detoxification program designed to meet the needs of the individual patient who is withdrawing from alcohol and other chemical substances. Union Hospital's Break-Free program provides short-term acute care followed by a choice of various rehabilitation programs in the area. Open 24 hours a day.



seven days a week, the Chemical Dependence unit is separate from other hospital treatment areas to ensure privacy and promote an atmosphere of cohesiveness and mutual support among patients and staff. **BREAK FREE** today at Union Hospital. There are friends here. Break-Free offers the caring, professional help so crucial in assisting the chemically dependent person in returning to a productive, substance-free way of life.

B R E A K - F R E E

AT

For more information and free brochure, call or write:

Union Hospital
of Cecil County
Bow St.
Elkton, MD 21921
MD (301) 398-4000
DE (302) 731-0743



DISCOVER THE SPIRIT OF UNION HOSPITAL

CHURCHES

CHURCH CALENDAR

• **The Ebenezer Thrift Shop** at Ebenezer United Methodist Church, 525 Polly Drummond Hill Rd., will be open 9:30 a.m. to noon Friday and Saturday, March 11-12. Clothes only will be available Friday. Saturday, there will be clothes, toys, attic treasures and country store.

• **Kemblesville United Methodist Church**, Pa. 896, just north of Newark, will hold its second annual ham dinner 5-7:30 p.m. Saturday, March 12. Cost is \$6 for adults, \$3 for children under 12. Children less than two years of age will be admitted free.

• **"Empowering Ourselves,"** a program on the need for human support, will be presented at 10:30 a.m. Sunday, March 13 at the Unitarian Universalist Fellowship of Newark, 420 Willa Rd. Rev. Louise Robeck and Carol Shaw, a member of the Fellowship, will lead a discussion on how people find more power together than by each standing alone. They will explore what each individual can do to be supportive, and to be supported.

• **Lenten ecumenical services** are being held by Newark's Protestant and Catholic churches. Services are scheduled: 7 p.m. Sunday, March 13, St. John's/Holy Angels Catholic Church; 7 p.m. Sunday, March 27, Newark United Church of Christ.

• **The Gordon College Women's Choir** will present a concert of sacred music at 9:30 and 11 a.m. Sunday, March 13 at **Newark United Methodist Church**, Main Street. The 40-member choir, under the direction of Dr. Alton C. Bynum, performs a variety of music styles and their repertoire includes a number of handbell selections. Gordon is a four-year Christian college in Wenham, Mass.

• **Temple Beth El**, 301 Possum Park Rd., will offer a **Passover Specialty Store** from 9:30 a.m. to 3:30 p.m. Sunday, March 13, and from 4:30-6:30 p.m. Tuesday and Thursday, March 15 and 17. Featured will

be standard Passover foods and many harder-to-find treats. For details, call 366-8330.

• **Anabel**, who communicates God's message through song, will perform at 11 a.m. Sunday, March 13 at **Red Lion United Methodist Church**, 1851 Bear-Corbitt Rd., Bear. The concert is free.

• **The Delaware Chapter of the American Guild of Organists** will sponsor a **festival of children's choirs** at 4 p.m. Sunday, March 13 in **Aldersgate United Methodist Church** on the Concord Pike near Wilmington.

• **Newark's First Christian Women's Club** will hold a "Stroll Into Spring" luncheon at noon Monday, March 14 in **Clayton Hall** on the University of Delaware's north campus. The luncheon will feature spring fashions from Leroy's and vocal selections by Carol Nile of Elkton, Md. Free nursery will be available at 357 Paper Mill Rd. Cost is \$6.75, and reservations for the luncheon and babysitting are due by March 10. Call 368-1928, 737-9365 or 737-0770.

• **The Newark Area Bereavement Support Group** will meet at 7:30 p.m. Thursday, March 17 in **Newark United Methodist Church**, 69 E. Main St. The purpose of the group is to lend support to persons who have lost loved ones or friends to death. The setting is informal, and all bereaved persons in need of a helping hand are invited to attend. The support group is co-sponsored by the Wesley Foundation Campus Ministry and Newark United Methodist Church. For details, call 368-8774.

• **Christiana Presbyterian Church**, 15 N. Old Baltimore Pike, will hold its annual "Grandma's Attic" flea market and soup sale 8 a.m. to 3 p.m. Saturday, March 19. Items for sale will include plants, books and baked goods. Homemade soup and lunch will be available. Dealers are welcome; cost is \$10 per table. For details, call 328-3659 or 322-1998.



Some members of Holy Angels Catholic Church on Possum Park Road will be participating in Diocesan survey.

Photo/Robert Craig

Catholics asked to contribute ideas

Some Delaware Catholics are being asked to contribute ideas and direction for the local church in the next five years.

Some 7,800 people have received surveys which have been mailed at random. The purpose of the questionnaire mailed into all areas of the Diocese of Wilmington is to gather data on the life and ministry of the diocese.

The survey is part of a pastoral planning process that began in 1987 with the establish-

ment of a Diocesan Pastoral Planning Committee composed of a cross-section of lay men and women, permanent deacons, priests and women religious. People receiving the survey are being asked to assist the committee by spending approximately 30 minutes in completing the form.

Participants will answer questions about liturgy, prayer, ministerial leadership, lay ministries, Christian education,

evangelization, communications, social services and services to youth, the elderly and the handicapped. There is also a personal profile section for each person responding to the questionnaire.

Members of the planning committee have the task of gathering the information and opinions that will identify the diocese's strengths and weaknesses, review and evaluate programs, measure the church's respon-

siveness to the needs of the faith community and the larger community, and plan for the future.

The data gathered will be the basis of the committee's recommended goals and objectives for pastoral ministries in Delaware and the Eastern Shore of Maryland. By the end of 1988, the information will be put in the form of a report and will be presented to the Most Rev. Robert E. Mulvey, Bishop of Wilmington.

WEDDINGS

McNeely-Snoeyink wed

Elizabeth Adair McNeely and Jack Scott Snoeyink were married on Saturday afternoon, Feb. 27, in the Christian Reformed Church of Palo Alto, Calif.

Parents of the couple are Mr. and Mrs. James B. McNeely of Newark and Mr. and Mrs. Arnold Snoeyink of Grand Rapids, Mich. The ceremony was performed by the Rev. Bruce McNeely, uncle of the bride and minister of Bethany Baptist Church in Pontiac, Mich. The message of the service was presented by the groom's father, who teaches English and religion at Grand Rapids Christian High School.

The bride's sister, Margaret McNeely Kuras of Charlotte, North Carolina, was matron of honor. Bridesmaids were Diane Collins of London, England, and Amy Snoeyink of Grand Rapids,

sister of the groom. The groom was attended by his two brothers from Grand Rapids. Don Snoeyink was best man and Kent Snoeyink was a groomsman. The bride's brother, David McNeely of Silver Spring, Md., was also a groomsman.

For the wedding ceremony the musicians were organist, Valerie Sterk of Sunnyvale, Calif.; recorder, Ruth Griffioen of Swarthmore, Pa.; flute, Gretchen Vander Plas of Palo Alto; trumpet, Todd Hoeksema of Redwood City, Calif.; and French horn, Keith Griffioen of Swarthmore. Vocalist Peggy Tazelaar of Sunnyvale sang Bach's "Be Thou With Them." Baroque trio sonatas for organ, flute, and recorder by G. F. Handel and G. P. Telemann were the prelude music. The



Elizabeth McNeely Snoeyink

bride's attendants processed to the Alleluia from Trio Sonata in F by G.F. Handel.

The bride wore a long sleeved tea-length dress of ivory rayon

and silk crepe. The band collar and sleeve cuffs were trimmed with old-fashioned lace. Her headpiece was a wreath of ivory silk flowers with a cascade of narrow satin ribbons and strings of pearls at the back.

The bride graduated from Monta Vista High School in Cupertino, Calif. She is a chemical engineer with a bachelor's degree from MIT and master's and engineer's degrees from Stanford. She is completing her doctorate in chemical engineering at Stanford. All of her graduate work is in biomedical research of the human kidney.

The groom graduated from Grand Rapids Christian High School. He is an honors graduate of Calvin College with a double major in mathematics and computer science. He is studying for a doctorate in computer science at Stanford under a National Science Foundation graduate fellowship.

CHURCH DIRECTORY

<p>THE FELLOWSHIP Meeting at Newark YWCA Corner of W. Park Place & College Ave. (302) 738-5829</p> <p>Sunday Bible Classes 9:30 AM all ages Worship Service 10:30 AM Nursery Available "Sharing Christ in Mutual Ministry"</p>	<p>OUR REDEEMER LUTHERAN CHURCH Johnson at Augusta Ches. Hill Est., Newark (302) 737-6176</p> <p>Sunday School and Bible Classes 9:00 AM Divine Worship 10:00 AM Summer Worship 9:00 AM Holy Communion, 1st & 3rd Sunday Carl H. Kruelle, Jr., Pastor</p>	<p>SAINT NICHOLAS EPISCOPAL CHURCH Old Newark Rd. & Chester Hill Rd., Newark Holy Eucharist 9:30 AM</p>	<p>FIRST PRESBYTERIAN CHURCH 292 West Main St. Newark Church School 9:15 AM Worship 10:30 AM Nursery provided. Ramp access for the handicapped. The Rev. Paul Walenta, Preaching</p>	<p>ST. JOHN'S LUTHERAN CHURCH 135 S. Baltimore Pike Christiana, DE 19702 302-368-7394 Worship 9 AM Pastor Robert Balza</p>	
<p>GRACE EVANGELICAL FREE CHURCH Meeting at Skyline Middle School (Skyline Dr. & Linden Hill Rd.) (302) 737-4431</p> <p>Bible Classes 9:45 AM Worship 11:00 AM Rev. Gregory L. Hurlinger, Pastor/Teacher (16 M., Dallas Theological Seminary) A place where a committed Christian can grow!</p>	<p>PRATHE ASSEMBLY 698 Old Baltimore Pike, Newark UAW Local 1182</p> <p>Sunday 9 AM & 5 PM Wednesday 7 PM Family Night (Youth Group, Royal Rangers, Masonettes, & Rainbows) Paul H. Walters, Pastor</p>	<p>UNITARIAN UNIVERSALIST FELLOWSHIP OF NEWARK 420 Willa Rd. 368-2984 Sunday Services 10:30 AM (For Adults & Children) Rev. Louise Roebbeck-Minister Find Religious Freedom in Our Welcoming Community</p>	<p>WESLEYAN CHURCH 728 Church Rd., Newark (302) 737-5190 or (302) 733-0413 Sunday Services 9:30-10:30 AM, 7 PM Wednesday 10:30 AM, 7 PM Evangelism & Bible Study Pastor J. Thomas Pullen "A Church that cares and strengthens your faith."</p>	<p>THE NEWARK UNITED CHURCH OF CHRIST 215 E. Delaware, Newark (302) 737-4711 Worship 9:30 AM Sunday School 11:00 AM Child Care Provided Pastor Wells, Pastor</p>	<p>EBENEZER UNITED METHODIST CHURCH Pike Creek Vale 525 Polly Drummond Rd. Newark (302) 731-9432 or (302) 731-9435 Worship Service 8:30 & 11 AM Nursery Available. Handicapped Accessible Church School: all ages 9:30 AM U.M.W.F.: 9:15-11:15 AM Bible Study Thursday: 9:15-11:15 AM Dr. D. O. Cendanel, Sr., Senior Minister Rev. T. P. Donachie, II., Assoc. Minister Rev. G. W. Goadley, Minister, Visitation "Come Catch the Spirit"</p>
<p>CHRISTIANA UNITED METHODIST CHURCH 21 W. Main St., Christiana (302) 738-7544 Church School 9:45 AM Worship 11:00 AM Nursery Available Punch & Cookie Fellowship Weekly Rev. H. E. "Sam" Hale "Free Life Time Membership"</p>	<p>SALEM UNITED METHODIST CHURCH 469 Salem Church Rd. (302) 738-4822 Worship 9:30 AM Sunday School 10:45 AM (Nursery Provided) Donald J. Hurst, Pastor Richard G. Pyle, Asst. "Catch the Spirit"</p>	<p>WHITE CLAY CREEK PRESBYTERIAN CHURCH 15 Polly Drummond Hill Rd. (302) 737-2100 Worship 9:30 AM Sunday School 9:45 AM Worship Service 9:45 AM Nursery & Junior Church 11:00 AM First Sunday Holy Communion</p>	<p>PENCADER PRESBYTERIAN CHURCH Corner of Rt. 896 & Rt. 40 (302) 731-5524 Worship 10:30 AM Adult & Children Sunday School 9:15 AM Youth Fellowship 8:00 PM "A Church proud of its past with a vision for the future." John Oldman, Pastor</p>	<p>LANDMARK BAPTIST CHURCH Now Meeting in Pencader Grange Hall on Rt. 896 & Rt. 40 - Glasgow (302) 368-3606 Sunday School 10:30 AM Worship Sunday: 10:45 AM Everyone Welcome!</p>	<p>CALVARY BAPTIST CHURCH 215 E. Delaware Ave. Newark, DE (302) 368-4904 Sunday Church School 9:45 AM Morning Worship 11:00 AM B.Y.F.: 5:30 PM Wednesday Family Fellowship Covered Dish Dinner 5:45 PM Bible Study 6:45 PM Age Groups: 7:45 PM Adult Choir Rehearsal: 7:45 PM Dr. Daniel A. MacDonald, Pastor</p>
<p>FIRST ASSEMBLY OF GOD 129 Lovett Ave., Newark, DE 368-4276 731-8231 Home Church Our services for this week are: Sunday: 9:30 AM Bible Study Hour: Classes for All Morning Worship, Toddler's Church, Jr. Church & Teen Church: 10:40 AM Evening Service: 7:00 PM Thomas Luter, Pastor</p>	<p>GLASGOW CHURCH OF THE NAZARENE Four Season's Pavilion 896 & Four Season's Pkwy. Newark, DE (302) 738-6483 Sunday School: 9:30 AM Morning Worship: 10:30 AM Evening Worship: 6:00 PM Wednesday Bible Study: 7:00 PM Grove C. Deskins, Pastor To list your church services, call 737-0724. Changes must be in by Fri. noon.</p>	<p>FIRST CHURCH OF CHRIST SCIENTIST Delaware Ave. & Haines St. Newark, DE Sunday Service 10:00 AM Sunday School 10:00 AM Wednesday Testimony Service 7:30 PM Reading Room: Sat. 10 AM Noon All Are Welcome Child Care Provided</p>	<p>FAITH LUTHERAN CHURCH Now Worshipping at "Mother Hubbard's Day Care Center" Rt. 896, just South of Glasgow H.S. (302) 731-7030 Sunday School: 9:15 AM Worship 10:30 AM</p>	<p>NEWARK UNITED METHODIST CHURCH 69 E. Main St., Newark (302) 368-8774 All Welcome Sunday Worship 8:30, 9:30 & 11 AM Church School (all ages): 9:30 & 11 AM University Class: 11 AM Eucharist for Students, Sundays at 5 PM (Supper Follows) Youth Fellowship: Sundays: 6:30 PM Noon Prayer: Wednesdays Eucharist: Thursdays: 12:30 PM Clifford A. Armour, Senior Pastor John I. Penn, Assoc. Pastor John Patrick Colatch, Campus Pastor *Broadcast WNRK 1260 AM</p>	<p>AGAPE FELLOWSHIP (302) 738-5067 A Spirit-filled local expression of the Body of Christ. Sunday Worship 10 AM at Howard Johnson's, Rt. 896 & 95 Wednesday Home Meeting: 7:30 PM</p>

A GUIDE TO AREA WORSHIP SERVICES

The NewArk Post Needs You!

Earn money by delivering the Post in your neighborhood.

Immediate openings in:

**Marydale
Hillside Heights
Porter Square
Fairfield
West Park Place
Binns/Devon Place
Pilgrim Gardens
Lumbrook
Buckley
Salem Woods**

CALL 737-0905

Yes, I am interested in becoming a carrier for The NewArk Post. Please add my name to your file.

Name _____

Address _____

Phone _____ Age _____

Neighborhood _____

Clip coupon and mail to The NewArk Post, 153 E. Chestnut Hill Rd., Newark, DE 19713.

LIFESTYLE



Spring has sprung, it seems, and much to the pleasure of seven-year-old Dennis Cheers, who took advantage of warm weekend weather to get in some playground time.

Photo/Robert Craig

Decisions part of daily life

Decisions! Decisions! Families are faced daily with decisions. Where will the family spend its next vacation? When will that old car be replaced? Should Johnny have a new trumpet or would that money be better spent on new screens or storm windows?

Individuals make decisions in different ways, explains Roxanne Tomczak, a University of Delaware senior majoring in individual and family studies.

"Some people like to gather a great deal of information before making a decision. Others like to quickly choose the first possibility that seems reasonable to them. Some people rely on the experiences of their friends and neighbors while others prefer to review the results of carefully controlled consumer studies," she says.

Tomczak, who is serving an internship with Extension family and child development specialist Dr. Pat Nelson, has been studying decision making in families. "Since each person in the family is likely to view

situations differently, depending on their style of decision making, this leaves many opportunities for conflict and disagreement," she says.

"While it can be difficult to make decisions with other people, there are clear advantages to sharing the decision-making process. Studies have shown that some of the unhappiest people are those who make decisions on their own and carry all the responsibility for the family's financial well being," she says.

The student intern says that researchers have found that families tend to develop their own decision-making styles. In some families, people make their own decisions without consulting anyone. In other families, decisions are based on what is best for the family as a whole, rather than what is best for specific individuals. A collaborative style — one in which all family members have a voice in what happens — is also used by many families.

In the collaborative style,

Tomczak says, the final decision is usually made by the adults in the family who know most about the issue at hand, but the ideas of all interested members are considered.

"The best decisions are those that take into consideration many different viewpoints," she says. "It takes creativity and diplomacy to craft solutions from many different perspectives, but the most workable decisions appear to be those that take into account all the differing viewpoints found within a family."

VOLUME II
"A FULL SERVICE BOOKSTORE"

LOOK FOR THE GRAND OPENING of VOLUME II
NEWARK NEWSSTAND'S "NEW EDITION"

MAIN ST. NEWARK
In The Mini Mall

M&M'S

DRY CLEANERS

"OVER 30 YEARS IN NEWARK...."

TWO CONVENIENT LOCATIONS:
• 11 N. Chapel St., Newark
• Coffee Run Shopping Ctr. (Next to Doc's Meat Mkt.) Hockessin

COUPON

• SPORT COATS
• SLACKS
• PLAIN SKIRTS
• SWEATERS

\$240

COUPON PRICE
REGULARLY \$2.50
Expires 3/31/88

COUPON

• 2 PIECE MEN'S & LADIES' SUITS
• LADIES' DRESSES (PLAIN)

\$480

COUPON PRICE
REGULARLY \$5.00
Expires 3/31/88

PLEASE PRESENT COUPON WITH INCOMING ORDER

THE AMERICAN HEART ASSOCIATION MEMORIAL PROGRAM

WE'RE FIGHTING FOR YOUR LIFE

American Heart Association

This space provided as a public service.

Cooper TIRES

DISCOVERER RADIAL LT

ALL-SEASON RADIAL for LIGHT TRUCKS and RV'S

- *radial construction for excellent handling
- *outline white letters for classy appearance
- *unique internal construction for durability

SIZE	Reg. Price	SALE	PLY
195/75R14	82.63	49.95	B
215/75R15	84.56	53.50	B
235/75R15	93.80	59.50	B
31x10.50R15LT	121.84	89.95	B
31x11.50R15LT	124.60	93.50	B
33x12.50R15LT	137.52	99.95	B
33x12.50R16.5	147.64	119.95	B

Cooper TIRES

TIRE SALE Spectacular!

Cooper TIRES

STEEL-BELTED TIRES TRENDSETTER RADIAL

- *Strength & Long Service
- *2 Tough Steel Cord Belts
- *Value Designed Tread
- *Traction Aiding Tread Void

Size P-Metric Size	Our Special Discount Prices	Size P-Metric Size	Our Special Discount Prices
P155/80R13	\$27.95	P205/75R14	\$34.77
P165/80R13	\$28.95	P215/75R14	\$39.95
P175/80R13	\$29.95	P205/75R15	\$35.95
P185/80R13	\$31.95	P215/75R15	\$37.95
P185/75R14	\$32.88	P225/75R15	\$41.95
P195/75R14	\$34.95	P235/75R15	\$42.95

COUPON

FRONT END WHEEL ALIGNMENT

Special **SAVE \$13.75** REG. \$29.50

- * Set Caster, Camber and Toe
- * Inspect Suspension And Steering Systems
- * Most Cars
- * Chevrolet, 1-1000, Fiero And Front Wheel Drive Extra
- * We install Quality Moog Front End Parts
- * Plus 9 Point Vehicle Check

*Not Valid On Sunday Coupon Expires March 31, 1988

COUPON

FRONT DISC OR REAR BRAKE RELINE

Special **SAVE \$43.00** REG. \$82.95

BRAKEMASTERS

- *Install Brake Pads Or Shoes
- * Re-pack Front Wheel Bearings (Excluding Sealed Bearings)
- * Inspect Calipers
- * Most U.S. Cars
- * Metallic Linings Extra
- * Plus 9 Point Vehicle Check

Coupon Expires March 31, 1988

GAS SAVING ENGINE TUNE-UP
A.C. OR N.D. SPARK PLUGS & STANDARD IGNITION

4 Cy - \$33.00 6 Cy - \$39.00 8 Cy - \$44.00

- * Electronic Ignition charging and starting systems analysis
- * Install new plugs
- * Set timing
- * Check carburetor
- * Check belts, hoses & air filters
- * Includes most cars and light trucks — Plus 9 Point Vehicle Check

*Not Valid On Sunday Coupon Expires March 31, 1988

COUPON

BRAKE ADJUSTMENT & INSPECTION FOR REAR DRUM BRAKES

Special **SAVE \$16.50** REG. \$24.00

BRAKEMASTERS

- * Includes Road Test
- * Inspect System
- * Brake Adjustment
- * Fluid if Needed
- * Most Cars

Coupon Expires March 31, 1988

COUPON

Just Say Charge It!

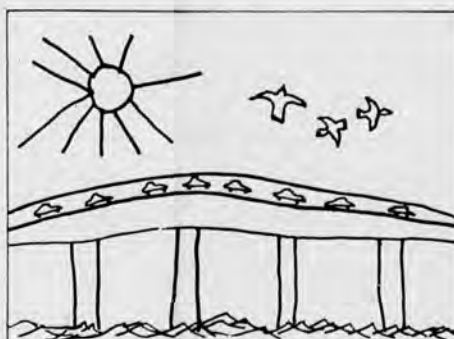
AMERICAN EXPRESS VISA MC DISCOVER CHOICE WSFS

Palumbo's CAR CARE CENTER

2515 Pulaski Highway - Next to Glass Kitchen
U.S. Route 40 - Glasgow, DE

in Delaware (302) 368-2800 Cecil Co. Toll Free 398-9191

American Express-VISA-MC-DISCOVER-CHOICE-WSFS



You're invited to a special preview — "Artistic Impressions of the First State", as seen through the eyes of young students in our area.

A special exhibit of artwork, being shown all this month at First State Plaza Shopping Center on Newport Pike.

Artistic Impressions of the First State

- Brought to you by The Merchants of First State Plaza:
- Val's Hallmark
Peregoy's Gifts
American International
ServiCenter
Gallery Pizza
Restaurant
Video King
Personal FX
Bonanza Restaurant

ShopRite
Plaza Liquors
O'Toole's Restaurant
White Eagle
Savings & Loan
China House Restaurant
1-Hr Martinizing
Dry Cleaning
Pet World



You Come First At First State Plaza!
Conveniently located on Route 4 (Newport Pike) midway between Stanton and Newport.

**MISSING
ISSUE(S)**