

The Blue
and Gold

Foreword

We, the Junior Class of the Women's College of Delaware, publish this annual with the earnest desire that it may express in some measure our deep appreciation of what college life has meant to us.

We wish to thank those who have helped make possible this book, those both of the student body and of the faculty, principally Professor George Dutton. Also, we wish to express appreciation for the artistic workmanship of *Kells* Master Craftsmen.

—*The Editors*





All College Picture

DEDICATION

TO CHARLES R. MILLER

In grateful acknowledgment of his far vision
and earnest endeavor in helping to fashion
substance out of a dream and in appreciation
of his unswerving loyalty to the Women's
College of Delaware

WE DEDICATE THIS BOOK



Auld Lang Syne

*Because of memories far too deep for words,
Because of hours passed joyously care-free,
Because of friendships lasting, sweet, and true,
Our days in college we shall not regret.*

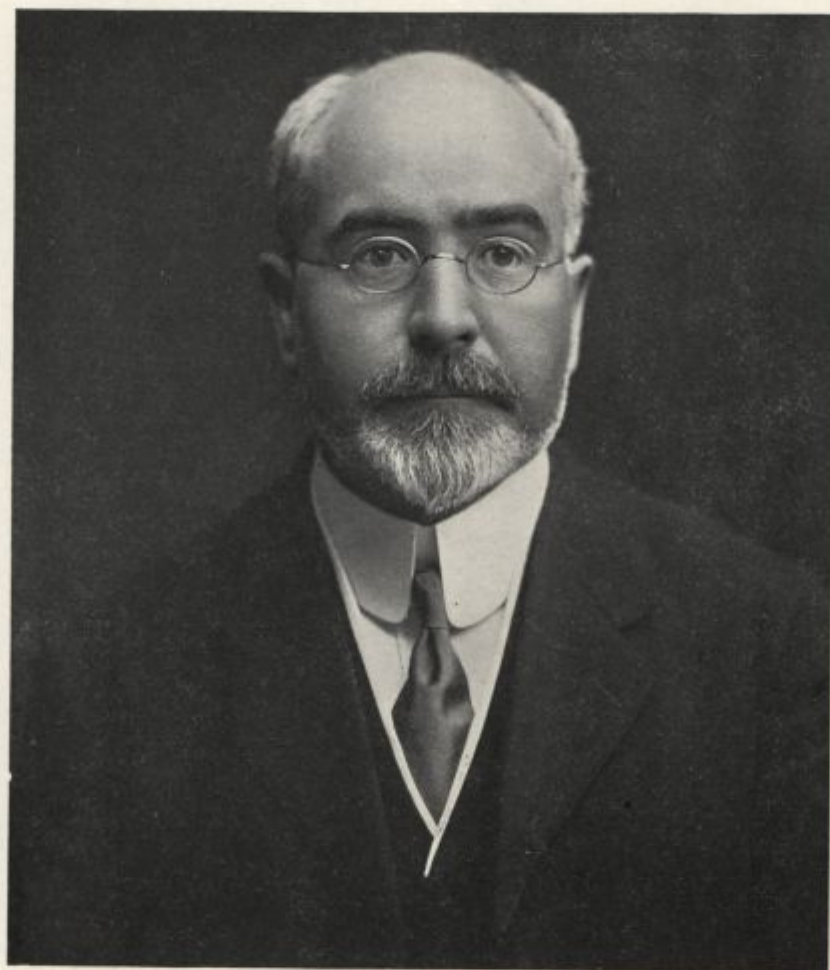
*In after years of knowledge of the world,
In days of meditation and repose,
In moments when we know our heart's own love,
Oh, Alma Mater, we will not forget!*

—D. M.





Dean Winifred Josephine Robinson



President Samuel Chiles Mitchell





Academic Council

SAMUEL CHILES MITCHELL, PH. D., *President*

WINIFRED JOSEPHINE ROBINSON, PH. D., *Dean*

GEORGE ABRAM HARTER, PH. D., *Physics*

ELISHA CONOVER, M. A., *Ancient Languages*

EDWARD LAURENCE SMITH, M. A., *Modern Languages*

WILBUR OWEN SYPHERD, PH. D., *English*

EARNEST VANCOURT VAUGHN, PH. D., *History*

MARY ELIZABETH RICH, B. S., *Education*

GEORGE ELLIOTT DUTTON, M. A., *English*

KENT ROBERTS GREENFIELD, PH. D., *History*

JOHN ROBERT MOORE, PH. D., *English*

FINLEY MELVILLE KENDALL FOSTER, PH. D., *English*

REINHOLD EUGENE SALESKI, M. A., *Modern Languages*

F. A. HAYS, PH. D., *Animal Husbandry*

DORA EDITH WARE, M. A., *Biology*

QUAESITA CROMWELL DRAKE, M. A., *Chemistry*

EVELYN IDA FERNALD, A. B., *Bacteriology*

MARION ETHEL WATSON, *Physical Education*

WILLIAM ALBERT WILKINSON, M. A., *Education*

EUGENE MAUBERT, *French*

SARAH HELEN BRIDGE, B. S.,

Head of Home Economics Department

ORLISTA L. DIKEMAN, B. S., *Sewing and Textiles*

CHARLES ANDREW McCUE, B. S., *Horticulture*

CHARLES CONGER PALMER, S. M., D. V. M., *Bacteriology*

Other Officers

SARAH CHURCHMAN, *Matron*

MRS. WILSON, *Assistant Matron*

EDWINA LONG, *Secretary to Dean*