

P
A MELMAO
CEREAL BOWL
T-DESSERT BOWL
SAUGER
HIGH DINNER PLATE
48¢
with
this
coupon
QUALITY
AL!
NICE HIGHER
Cut-up
chickens
37¢
lb.
9¢
Breasts
lb. 65¢
Priced Higher
\$2.75
(2 1/2-lb. box \$1.75)
3-lb. box \$3.15
Higher
49¢
lb. 69¢
\$1.49
NICE HIGHER
lb. 79¢
1-lb. 89¢
59¢
UCE
ONE
CED
SHER
Higher
79¢
37¢
25¢
pg. 55¢
pg. 35¢
pg. 39¢
pg. 39¢
2 5-oz. 43¢
6 1-lb. 89¢
2 quart 49¢
2 16-oz. 39¢
16-oz. 10¢
12-oz. 29¢
2 46-oz. 49¢
3 16-oz. 95¢
2 16-oz. 29¢
13-oz. 25¢
2 1-lb. 35¢
6-oz. 89¢
3 3-pkt. \$1.00
8-inch 49¢
ry Soap
arge 49¢
Duz
ated Soap
85¢
Liquid
torgent
22-oz. 73¢
Tide
ergent
5¢
CONDITION
CE

Drive Carefully
Be Sure That YOU
Avoid An Accident

VOL. 48, NO. 11

Local Police Arrest Fugitive Sought In Bride Murder Case

Newark Patrolmen Ronald Bramble, Clayton Trumbull Arrest Suspect In Eastern Shore Murder, Following Alarm At Local VFW Post Early Last Monday Morning

Newark police terminated an intensive, three-week hunt Monday, by arresting 27-year-old Clayton E. Breeding, a convict wanted in connection with the murder of a 19-year-old Eastern Shore bride.

Breeding was arrested at 2:45 a.m. after breaking into the Veterans of Foreign Wars post home on Barksdale Road. He waived extradition proceedings before Magistrate Clarence S. Foster of Newark, and returned to Maryland to face murder charge.

Charged with Murder
Breeding is charged with the murder of Mrs. Ruth Ellen Cannon, a widow of three months, whose body was found June 20 in a thickly wooded area on Maryland State Route 40, about a half mile from the Delaware line, near her husband's home. She had apparently been strangled with a piece of white cloth.

Breeding broke into the VFW post and set off the post burglar alarm system in the Newark police station, and Patrolman George Gettemy, radioed Patrolmen Ronald Bramble and Clayton J. Trumbull, who were on patrol in the area. They sped to the post which is just off Elkton Road, the B&O Railroad tracks.

Warning Shots
As they arrived, they saw a man attempting to escape and Trumbull fired two warning shots, calling "I'll drop you on the next one."

When the man stopped and surrendered, he was unarmed.

Newark police said Breeding did not know the identity of his body and was not a burglar. He had been in the post for about five days.

Breeding was arrested by Trumbull and Gettemy, who were on patrol in the area. They sped to the post which is just off Elkton Road, the B&O Railroad tracks.

Breeding was arrested by Trumbull and Gettemy, who were on patrol in the area. They sped to the post which is just off Elkton Road, the B&O Railroad tracks.

Breeding was arrested by Trumbull and Gettemy, who were on patrol in the area. They sped to the post which is just off Elkton Road, the B&O Railroad tracks.

Breeding was arrested by Trumbull and Gettemy, who were on patrol in the area. They sped to the post which is just off Elkton Road, the B&O Railroad tracks.

Breeding was arrested by Trumbull and Gettemy, who were on patrol in the area. They sped to the post which is just off Elkton Road, the B&O Railroad tracks.

Breeding was arrested by Trumbull and Gettemy, who were on patrol in the area. They sped to the post which is just off Elkton Road, the B&O Railroad tracks.

Breeding was arrested by Trumbull and Gettemy, who were on patrol in the area. They sped to the post which is just off Elkton Road, the B&O Railroad tracks.

Breeding was arrested by Trumbull and Gettemy, who were on patrol in the area. They sped to the post which is just off Elkton Road, the B&O Railroad tracks.

Breeding was arrested by Trumbull and Gettemy, who were on patrol in the area. They sped to the post which is just off Elkton Road, the B&O Railroad tracks.

Breeding was arrested by Trumbull and Gettemy, who were on patrol in the area. They sped to the post which is just off Elkton Road, the B&O Railroad tracks.

Breeding was arrested by Trumbull and Gettemy, who were on patrol in the area. They sped to the post which is just off Elkton Road, the B&O Railroad tracks.

Breeding was arrested by Trumbull and Gettemy, who were on patrol in the area. They sped to the post which is just off Elkton Road, the B&O Railroad tracks.

Breeding was arrested by Trumbull and Gettemy, who were on patrol in the area. They sped to the post which is just off Elkton Road, the B&O Railroad tracks.

Breeding was arrested by Trumbull and Gettemy, who were on patrol in the area. They sped to the post which is just off Elkton Road, the B&O Railroad tracks.

Breeding was arrested by Trumbull and Gettemy, who were on patrol in the area. They sped to the post which is just off Elkton Road, the B&O Railroad tracks.

Breeding was arrested by Trumbull and Gettemy, who were on patrol in the area. They sped to the post which is just off Elkton Road, the B&O Railroad tracks.

Breeding was arrested by Trumbull and Gettemy, who were on patrol in the area. They sped to the post which is just off Elkton Road, the B&O Railroad tracks.

Breeding was arrested by Trumbull and Gettemy, who were on patrol in the area. They sped to the post which is just off Elkton Road, the B&O Railroad tracks.

Breeding was arrested by Trumbull and Gettemy, who were on patrol in the area. They sped to the post which is just off Elkton Road, the B&O Railroad tracks.

Plymouth Walkout Closes Local Plant Twice In 5 Days

1,300 Walk Off Shift
In Grievance Protest
At Local Auto Plant

The Chrysler Corporation's Plymouth assembly plant at Newark which shut down Tuesday for the second time within five days after a walkout of 500 workers in the body and paint shops.

The walkout occurred at about 10:30 a. m., as the workers on the proper shift went to lunch. About an hour later the management sent other production and maintenance workers home, and shut down the plant for the balance of the shift. About 1,300 workers were idled.

There was no picketing, and the second shift, consisting of maintenance workers, reported for work as usual Tuesday afternoon.

John B. Colbert, president of Local 1183, United Auto Workers, said he was informed that the walkout was sparked by refusal of a supervisor to bargain with a shop steward about an unspecified complaint.

Last Thursday's walkout of 1,300 workers at the Plymouth assembly plant at Newark was a demonstration in protest against grievances.

John B. Colbert, president of Local 1183, United Auto Workers said last Thursday night.

He said the demonstration involved only the first shift, and that the second shift went to work as usual that afternoon. The 1,300 demonstrators were back at their jobs Friday morning.

Mr. Colbert said the grievances which the workers feel have piled up over a long period, include anoyance of workers who are sick; use of skilled men at production jobs where men of lesser skill are normally employed; inadequate arrangements for relief periods; improper use of foremen, and inadequate ventilation.

The union president said that most of the grievances of the workers are long standing ones, but that something occurred Thursday which "straw that broke the camel's back." He did not specify what that was. The walkout occurred at 8 a. m.

The men who went to work last Thursday on the second shift are mainly maintenance employees.

St. Paul's Holds \$151,000 Church Ground-Breaking

Ground was broken Sunday for St. Paul's Lutheran Church on Glasgow Road, with nearly 300 persons attending the outdoor ceremony at the site for the \$151,000 church.

The Rev. J. Elmer Leas, pastor of St. Stephen's Church, Wilmington, compared the building of a church structure to the building of a church universal, saying that a foundation and cornerstone come first—the words of the prophets and apostles, with Jesus as the main cornerstone—and it is built of varying materials.

"Thus," he said, "We need to offer ourselves for the material of the eternal church."

The Rev. Howard S. Hugas, pastor, introduced persons who turned spadefuls of earth, and honoring Mrs. Anna Cameron, the oldest member, he said, "She represents for us our Christian faith. Here is a person who has remained a faithful Christian all her life."

Dr. Russell G. Stauffer, president of the board of trustees, and Milton C. Zeala, acting chairman of the building committee, took part in ground-breaking ceremonies, and Mrs. John Deleval was organist on the field organ provided by Red Clay Creek Presbyterian Church.

The Rev. J. Elmer Leas, pastor of St. Stephen's Church, Wilmington, compared the building of a church structure to the building of a church universal, saying that a foundation and cornerstone come first—the words of the prophets and apostles, with Jesus as the main cornerstone—and it is built of varying materials.

"Thus," he said, "We need to offer ourselves for the material of the eternal church."

The Rev. Howard S. Hugas, pastor, introduced persons who turned spadefuls of earth, and honoring Mrs. Anna Cameron, the oldest member, he said, "She represents for us our Christian faith. Here is a person who has remained a faithful Christian all her life."

Dr. Russell G. Stauffer, president of the board of trustees, and Milton C. Zeala, acting chairman of the building committee, took part in ground-breaking ceremonies, and Mrs. John Deleval was organist on the field organ provided by Red Clay Creek Presbyterian Church.

The Rev. J. Elmer Leas, pastor of St. Stephen's Church, Wilmington, compared the building of a church structure to the building of a church universal, saying that a foundation and cornerstone come first—the words of the prophets and apostles, with Jesus as the main cornerstone—and it is built of varying materials.

"Thus," he said, "We need to offer ourselves for the material of the eternal church."

The Rev. Howard S. Hugas, pastor, introduced persons who turned spadefuls of earth, and honoring Mrs. Anna Cameron, the oldest member, he said, "She represents for us our Christian faith. Here is a person who has remained a faithful Christian all her life."

Dr. Russell G. Stauffer, president of the board of trustees, and Milton C. Zeala, acting chairman of the building committee, took part in ground-breaking ceremonies, and Mrs. John Deleval was organist on the field organ provided by Red Clay Creek Presbyterian Church.

The Rev. J. Elmer Leas, pastor of St. Stephen's Church, Wilmington, compared the building of a church structure to the building of a church universal, saying that a foundation and cornerstone come first—the words of the prophets and apostles, with Jesus as the main cornerstone—and it is built of varying materials.

"Thus," he said, "We need to offer ourselves for the material of the eternal church."

Summer Science Day Camp Newark Man Jumps From Toll Bridge

Newark Man Jumps From Memorial Bridge After Penning Farewell Note

Howard Edward Lynch, 45, of Roseville Park, Newark, who suffered a stroke in January, 1957, spent three months in the Veterans Administration Hospital, and since then had complained of repeated headaches, jumped 100 feet to his death from the Delaware Memorial Bridge on Monday.

Police believe Lynch, a veteran of nearly four years of Navy service in World War II, paid the toll, parked the car on the West end of the bridge for about 15 minutes, wrote a note to his wife, Mrs. Mary Cade Lynch and his six-year-old son, Wayne, and jumped about 5:45 p. m.

There were apparently no witnesses to Lynch's leap.

He was identified by cards and papers in a wallet which he left with the note on the front seat of the car.

Lynch was employed at the DuPont Experimental Station. He had driven a fellow-worker home, but proceeded on to the bridge.

When he failed to appear, Mrs. Lynch telephoned Sgt. J. Earl Lynch, Newark policeman and a cousin of the victim, Sergeant Lynch notified state police shortly before the car was found.

Mr. Lynch is survived by his wife, son, and three half-brothers, James, Merritt, Casho, Brooksides; Robert Casho, near Odessa, and Thomas Casho, now in Germany with the Army.

Born in Christiansburg, he attended Newark schools.

The first sample home in Fairfield, 260-acre tract adjoining the Newark Country Club, will be opened to the public on this Saturday at 1 p. m.

Officials of Fairfield Construction Company announced today that the Beaumont Executive, a two-story brick home with four bedrooms, will be the first home in the \$10 million community to be completed.

Four other samples are nearly complete. Additional homes of varied design are planned for the near future.

Visitors may inspect the Fairfield homes from an entrance on New London Avenue. The main entrance, on Nottingham Road, is under construction.

The sample Beaumont Executive faces the fairways of the Newark Country Club. The Beaumont homes are situated on 100-foot-wide lots.

The first floor of the home includes a living room, dining room, kitchen, powder room, den, large foyer, porch and two-car garage. A brick fireplace is featured in the living room.

On the second floor are located four bedrooms and two baths. Off the master bedroom is a dressing room with bath.

The sample Beaumont Executive faces the fairways of the Newark Country Club. The Beaumont homes are situated on 100-foot-wide lots.

The first floor of the home includes a living room, dining room, kitchen, powder room, den, large foyer, porch and two-car garage. A brick fireplace is featured in the living room.

On the second floor are located four bedrooms and two baths. Off the master bedroom is a dressing room with bath.

The sample Beaumont Executive faces the fairways of the Newark Country Club. The Beaumont homes are situated on 100-foot-wide lots.

The first floor of the home includes a living room, dining room, kitchen, powder room, den, large foyer, porch and two-car garage. A brick fireplace is featured in the living room.

On the second floor are located four bedrooms and two baths. Off the master bedroom is a dressing room with bath.

The sample Beaumont Executive faces the fairways of the Newark Country Club. The Beaumont homes are situated on 100-foot-wide lots.

The first floor of the home includes a living room, dining room, kitchen, powder room, den, large foyer, porch and two-car garage. A brick fireplace is featured in the living room.

On the second floor are located four bedrooms and two baths. Off the master bedroom is a dressing room with bath.

The sample Beaumont Executive faces the fairways of the Newark Country Club. The Beaumont homes are situated on 100-foot-wide lots.

The first floor of the home includes a living room, dining room, kitchen, powder room, den, large foyer, porch and two-car garage. A brick fireplace is featured in the living room.

On the second floor are located four bedrooms and two baths. Off the master bedroom is a dressing room with bath.

War Veteran Dies In 100-Ft. Jump From Toll Bridge

Newark Man Jumps From Memorial Bridge After Penning Farewell Note

Howard Edward Lynch, 45, of Roseville Park, Newark, who suffered a stroke in January, 1957, spent three months in the Veterans Administration Hospital, and since then had complained of repeated headaches, jumped 100 feet to his death from the Delaware Memorial Bridge on Monday.

Police believe Lynch, a veteran of nearly four years of Navy service in World War II, paid the toll, parked the car on the West end of the bridge for about 15 minutes, wrote a note to his wife, Mrs. Mary Cade Lynch and his six-year-old son, Wayne, and jumped about 5:45 p. m.

There were apparently no witnesses to Lynch's leap.

He was identified by cards and papers in a wallet which he left with the note on the front seat of the car.

Lynch was employed at the DuPont Experimental Station. He had driven a fellow-worker home, but proceeded on to the bridge.

When he failed to appear, Mrs. Lynch telephoned Sgt. J. Earl Lynch, Newark policeman and a cousin of the victim, Sergeant Lynch notified state police shortly before the car was found.

Mr. Lynch is survived by his wife, son, and three half-brothers, James, Merritt, Casho, Brooksides; Robert Casho, near Odessa, and Thomas Casho, now in Germany with the Army.

Born in Christiansburg, he attended Newark schools.

The first sample home in Fairfield, 260-acre tract adjoining the Newark Country Club, will be opened to the public on this Saturday at 1 p. m.

Officials of Fairfield Construction Company announced today that the Beaumont Executive, a two-story brick home with four bedrooms, will be the first home in the \$10 million community to be completed.

Four other samples are nearly complete. Additional homes of varied design are planned for the near future.

Visitors may inspect the Fairfield homes from an entrance on New London Avenue. The main entrance, on Nottingham Road, is under construction.

The sample Beaumont Executive faces the fairways of the Newark Country Club. The Beaumont homes are situated on 100-foot-wide lots.

The first floor of the home includes a living room, dining room, kitchen, powder room, den, large foyer, porch and two-car garage. A brick fireplace is featured in the living room.

On the second floor are located four bedrooms and two baths. Off the master bedroom is a dressing room with bath.

The sample Beaumont Executive faces the fairways of the Newark Country Club. The Beaumont homes are situated on 100-foot-wide lots.

The first floor of the home includes a living room, dining room, kitchen, powder room, den, large foyer, porch and two-car garage. A brick fireplace is featured in the living room.

On the second floor are located four bedrooms and two baths. Off the master bedroom is a dressing room with bath.

The sample Beaumont Executive faces the fairways of the Newark Country Club. The Beaumont homes are situated on 100-foot-wide lots.

The first floor of the home includes a living room, dining room, kitchen, powder room, den, large foyer, porch and two-car garage. A brick fireplace is featured in the living room.

On the second floor are located four bedrooms and two baths. Off the master bedroom is a dressing room with bath.

The sample Beaumont Executive faces the fairways of the Newark Country Club. The Beaumont homes are situated on 100-foot-wide lots.

The first floor of the home includes a living room, dining room, kitchen, powder room, den, large foyer, porch and two-car garage. A brick fireplace is featured in the living room.

On the second floor are located four bedrooms and two baths. Off the master bedroom is a dressing room with bath.

The sample Beaumont Executive faces the fairways of the Newark Country Club. The Beaumont homes are situated on 100-foot-wide lots.

The first floor of the home includes a living room, dining room, kitchen, powder room, den, large foyer, porch and two-car garage. A brick fireplace is featured in the living room.

On the second floor are located four bedrooms and two baths. Off the master bedroom is a dressing room with bath.

Foster Reelected as Alderman By 5-2 Vote Of City Council

Coverdale Calls For Nominations, Vote After 3-Month Lapse Since Organizational Meeting; Minimum Housing Standards, Fire Prevention Code Established For City

Newark Alderman-Magistrate Clarence S. Foster was reelected as city alderman by a council vote of 5-2 over Francis E. B. McCann last Tuesday night, and City Council adopted two ordinances at final readings to establish minimum housing standards and a fire prevention code for the City of Newark.

Councilman William Coverdale stressed the fact that three months had elapsed since the April organizational meeting of council when the alderman was to have been appointed, and called for immediate nominations and an election.

Councilman George Wilson, who urged that "politics be removed from the job" and that Alderman-Magistrate Foster "take one of his hats off" with the non-political appointment of an alderman, nominated McCann, while Councilman George Neighbors nominated Foster.

Secretary Charles D. Long tallied the secret ballot and Magistrate Foster was reelected alderman.

The 20-page ordinance establishing minimum housing standards was adopted unanimously after some debate.

"Right Direction"
Councilman Wilson, who introduced the ordinance on July 8 following study by the League of Women Voters and the mayor's special committee on housing, stated that the ordinance "was not perfect, but is a start in the right direction."

He cited the possibility of perpetrating hardship in some cases, particularly with regard to minimum sleeping area, and urged that some "common sense be used for the common good" in enforcing the law.

Councilman Coverdale objected to any exceptions being made in the enforcement of housing standards, saying that such exceptions would defeat the purpose of the law.

It was pointed out that prosecutions for violations of the ordinance may not be conducted until six months after passage of the law, and with half a year ahead to amend any inequities in the ordinance, council approved the measure with unanimity.

The newly-adopted minimum housing standards require that every dwelling unit shall contain a bathroom or shower, with sink, lavatory basin and flush water closet connected with the sanitary sewer system. Privies are prohibited; each habitable room is to contain at least two electric outlets, and no room shall be used for sleeping purposes by two or more persons unless there is at least 50 sq. ft. of floor area for each occupant over 12 years of age, and 30 sq. ft. of floor space for each occupant under 12.

Fines to be levied for violation of housing standards are to be between \$5 and \$500 per day for the length of such violation.

Fire Code
Council unanimously approved the ordinance creating the office of fire marshal and adopting the National Board of Fire Underwriters' Fire prevention code for the City of Newark, with an effective date of July 23, 1958.

A proposed ordinance to rezone a section of Fairfield as recommended by the Planning Commission, from "RS" to "RD," commercial, was approved at a first reading, while a proposed ordinance to rezone an area at the southwest corner of East Park Place and South Chapel Street, from "RD" to "Business," was tabled indefinitely.

Council approved Grover Surratt's request for recomputation of taxes for the 43-45 East Main Street property of Walter R. Powell and 15 per cent discount extending beyond July 31, 1958.

In a letter to the mayor and councilmen, Mr. Surratt stated: "The appeals board met on July 17 and affirmed the decision of the building inspector in his directive of April 1. My contention is that the city has affirmed a condemnation order of April 1; had the city been completely organized (an appeals board appointed) most likely the buildings would not have been in existence as of date of assessment, and therefore the tax bill should be recomputed less the assessed value of the condemned buildings."

Merit Raises
Councilman C. Vernon Steele reported that the special finance committee had met twice to review July merit raises and the merit increment plan proposed by City Manager J. J. Salvoara, and requested an executive session of council which will be held next Wednesday at 7:30 p. m. for final decision.

The city manager announced that any improper installation of the 17 air conditioning units in the Academy Building is to be corrected by the supplier at no expense to the city; that the traffic light on South College Avenue at the entrance to the Chrysler plant is to be operated by plant personnel for a trial period; and that the city is attempting to recruit five additional policemen.

(Continued on Page 10)

Gordon Claves Awarded Scholarship For Design

Gordon S. Claves, son of Mr. and Mrs. Harry H. Claves of 19 Kells Avenue, Newark, has been awarded a full tuition scholarship for his senior year at the New York School of Interior Design.

Earlier this year, Claves was elected treasurer of his school's chapter of the National Society of Interior Designers.

Professional membership in NSID is accorded those professionals who have met performance standards.

(Continued on Page 6)

Somers Heads Newly Named Department Of Agricultural Biochemistry At U. D.

A change in name of one of the departments of the University of Delaware school of agriculture has been announced by Dean George M. Worrlow.

The new name is Department of Agricultural Biochemistry and Food Technology. Dr. G. Fred Somers, who was chairman of the department of agricultural chemistry, will serve as chairman of the new department.

In discussing the change, Dean Worrlow pointed out that the scope of work being carried out in the department is more broad than the former name implied. The department's research is concerned principally with plant biochemistry and basic aspects of food technology.

Delaware Food Market Report

By Anne Holberton
U. of D. Agricultural Extension Service

Succulent, juicy, in bountiful supply—all of these are words to describe fresh peaches. The United States Department of Agriculture expects this fruit to be abundant during the month of August. Use peaches in every way during the weeks ahead. Serve them whole, halved, sliced or cubed... chilled, broiled, baked or in entrees.

When buying peaches select the ones that are fresh looking and are firm—not hard. If the peach is green in color this shows it is not ripe and the flavor will tend to be bitter. Select those free from small punctures through which a gum like substance comes, since this defect often indicates the presence of worms. Avoid decayed spots. Usually there are three medium sized peaches per pound.

Watermelon continues to be an outstanding buy both quality wise as well as price. Cantaloupes, honey dew, Persian and Casaba melons are all in good supply at reasonable prices.

Blueberries, almost as big as grapes, have declined some in price and are bringing 25-29 cents a pint. Bananas continue to hold to a steady 15 cents a pound.

Fresh vegetables continue to pour into local markets in great abundance. Local corn is being featured

in many stores as well as squash and new potatoes. Snap beans, green peppers, cucumbers and cabbage are good buys. As a whole there is little change from the past week in supplies, however a few vegetables have declined from their previous low prices. Broccoli and egg plants have dropped 2-4 cents per pound.

For those of you who freeze, can or pickle look for excellent buys at local farmers' markets or stands. Local cucumbers are cheap and so are squash. Tomatoes are beginning to come in and soon will be in big enough supply to can.

Meat prices remain unchanged for the most part. Look for specials on leg-of-lamb and beef roast. Chuck roasts have dropped in price and will be featured again this week.

Chicken remains the best buy as it has been for the past few weeks.

STATE OF DELAWARE
Office of Secretary of State
To All To Whom These Presents May Come: Greeting:

WHEREAS, it appears to my satisfaction by a duly authenticated certificate certifying that the dissolution of NUBRIDGE DEVELOPMENT CO., a Delaware corporation whose principal office is located at

No. 90 Market Street of the City of Wilmington has been authorized in accordance with the provisions of Section 275 of the General Corporation Law of Delaware, (Chapter 1, Title 8, Delaware Code), as amended, which certificate has been executed, sealed and acknowledged in accordance with the provisions of said Section 275.

Now, therefore, I, GEORGE J. SCHULZ, Secretary of State of the State of Delaware, do hereby certify that the said corporation did on the twenty-first day of July, 1958, file in this office a Certificate of Dissolution, duly executed, sealed and acknowledged, which certificate is now on file in my office as provided by law.

IN TESTIMONY WHEREOF, I have hereunto set my hand and official seal, at Dover, this twenty-first day of July, 1958.

(OFFICIAL SEAL)
GEORGE J. SCHULZ,
Secretary of State
M. D. TOMLINSON,
Asst. Secretary of State

July 24

CHOOSE YOUR ADDRESS:

CALL EN 8-8748

28 Old Oak Road
326 Orchard Road
728 Academy Street
73 East Cleveland Ave.
24 North Chapel Street
18 Haines Street
21 Laurel Avenue
200 Woodlawn Avenue
20 & 22 Prospect Avenue — Double brick, attached
37 & 39 O'Daniel Avenue — 2 det. 4 br. homes
5 acres, house, 3-car gar.
2.6 acres, house, 2-car gar.
Old Post Road — 2 detached homes, space for gardening
Nottingham Road — New split level.
9 Orchard Avenue, Lumbrook
30 Kells Avenue
217 West Park Place

CHESTNUT HILL ESTATES:
18 Davies Road

BROOKSIDE:

11 Kress Road
56 Chaucer Drive
11 Kensington La.
16 McCord Drive
7 Morris Lane
11 Curry Lane
80 Chaucer Drive

NON FRA OR VA
121 Madison Drive
113 Madison Drive
3 Malvina Lane
29 Laurel Avenue

Easy Financing As Low As \$300.
Including Settlement

Call us Today

HANBY, PATTERSON
& SCHWARTZ

REALTORS • 71 E. Main St.
EN 8-8748, ANYTIME

Go TRAILWAYS To ATLANTIC CITY

VIA WILMINGTON-DELAWARE BRIDGE
Lv: NEWARK 10:00 am Lv: ATLANTIC CITY 6:30 pm
Ar: ATLANTIC CITY 12:45 pm Ar: NEWARK 9:25 pm

Bus Leaves from Rhodes Drug Store

Get tickets and information at Rhodes Drug Store for Non-Stop Bus Service from New Castle Airport to

NEW YORK — BALTIMORE

WASHINGTON and NORFOLK EXPRESS



Stevens Suggests Methods To Keep Flower Cuttings

U. of D. Horticulturist
Advices On Tricks With Keeping Flowers Fresh

How to keep your cut flowers from fading up in a matter of a few hours is often a problem, according to University of Delaware extension horticulturist Robert Stevens.

He says a few tricks can help a lot in making cut flowers last longer.

Wash your containers with soap and water. This will take out bacterial growths which cause flowers to wilt.

Cut the stems with a sharp knife on a slant. This will allow the flowers to take up more water.

Strip off the foliage that will be under water. Leaves under water will decay rapidly and cause the whole flower to break down faster.

Place the stems in water at 110 degrees which is lukewarm. The warm water moves into the stem faster than cold water. Be sure to cover the base of the stem but deep water is not necessary.

Stevens says the water should be allowed to cool for about two hours with a piece of paper wrapped loosely around the flowers to reduce loss of moisture. The flowers will become rigid after this two-hour period and can be arranged.

If some flowers wilt, repeat the hot water treatment.

Keeping the flowers at a temperature of 30 to 35 degrees will keep some kinds for several weeks. When using the flowers, they will last longer if kept in a cool place at night or when not in use.

They should be placed away from drafts and warm air as much as possible to reduce water loss, Stevens said.

Flowers such as dahlias, poppies and poinsettias have milky juices which clog up water intakes. To stop this the stems should be placed in boiling water for 30 seconds before the regular treatment with 110 degree water.

Each time the stem is cut the boiling water treatment is essential to allow the plant to take up water, Stevens said.

STATE OF DELAWARE
Office of Secretary of State
To All To Whom These Presents May Come: Greeting:

WHEREAS, it appears to my satisfaction by a duly authenticated certificate certifying that the dissolution of J. G. C. CO., a Delaware corporation whose principal office is located at

No. 100 West 10th Street of the City of Wilmington has been authorized in accordance with the provisions of Section 275 of the General Corporation Law of Delaware, (Chapter 1, Title 8, Delaware Code), as amended, which certificate has been executed, sealed and acknowledged in accordance with the provisions of said Section 275.

Now, therefore, I, GEORGE J. SCHULZ, Secretary of State of the State of Delaware, do hereby certify that the said corporation did on the twenty-first day of July, 1958, file in this office a Certificate of Dissolution, duly executed, sealed and acknowledged, which certificate is now on file in my office as provided by law.

IN TESTIMONY WHEREOF, I have hereunto set my hand and official seal, at Dover, this twenty-first day of July, 1958.

(OFFICIAL SEAL)
GEORGE J. SCHULZ,
Secretary of State
M. D. TOMLINSON,
Asst. Secretary of State

July 24

STATE OF DELAWARE
Office of Secretary of State
To All To Whom These Presents May Come: Greeting:

WHEREAS, it appears to my satisfaction by a duly authenticated certificate certifying that the dissolution of LIFE INSURANCE FUND EQUITIES, a Delaware corporation whose principal office is located at

No. 100 West 10th Street of the City of Wilmington has been authorized in accordance with the provisions of Section 275 of the General Corporation Law of Delaware, (Chapter 1, Title 8, Delaware Code), as amended, which certificate has been executed, sealed and acknowledged in accordance with the provisions of said Section 275.

Now, therefore, I, GEORGE J. SCHULZ, Secretary of State of the State of Delaware, do hereby certify that the said corporation did on the twenty-second day of July, 1958, file in this office a Certificate of Dissolution, duly executed, sealed and acknowledged, which certificate is now on file in my office as provided by law.

IN TESTIMONY WHEREOF, I have hereunto set my hand and official seal, at Dover, this twenty-second day of July, 1958.

(OFFICIAL SEAL)
GEORGE J. SCHULZ,
Secretary of State
M. D. TOMLINSON,
Asst. Secretary of State

July 24

STATE OF DELAWARE
Office of Secretary of State
To All To Whom These Presents May Come: Greeting:

WHEREAS, it appears to my satisfaction by a duly authenticated certificate certifying that the dissolution of THE FLORA LIFE CORPORATION, a Delaware corporation whose principal office is located at

No. 927 Market Street of the City of Wilmington has been authorized in accordance with the provisions of Section 275 of the General Corporation Law of Delaware, (Chapter 1, Title 8, Delaware Code), as amended, which certificate has been executed, sealed and acknowledged in accordance with the provisions of said Section 275.

Now, therefore, I, GEORGE J. SCHULZ, Secretary of State of the State of Delaware, do hereby certify that the said corporation did on the eighteenth day of July, 1958, file in this office a Certificate of Dissolution, duly executed, sealed and acknowledged, which certificate is now on file in my office as provided by law.

IN TESTIMONY WHEREOF, I have hereunto set my hand and official seal, at Dover, this eighteenth day of July, 1958.

(OFFICIAL SEAL)
GEORGE J. SCHULZ,
Secretary of State
M. D. TOMLINSON,
Asst. Secretary of State

July 24

STATE OF DELAWARE
Office of Secretary of State
To All To Whom These Presents May Come: Greeting:

WHEREAS, it appears to my satisfaction by a duly authenticated certificate certifying that the dissolution of THE FLORA LIFE CORPORATION, a Delaware corporation whose principal office is located at

No. 927 Market Street of the City of Wilmington has been authorized in accordance with the provisions of Section 275 of the General Corporation Law of Delaware, (Chapter 1, Title 8, Delaware Code), as amended, which certificate has been executed, sealed and acknowledged in accordance with the provisions of said Section 275.

Now, therefore, I, GEORGE J. SCHULZ, Secretary of State of the State of Delaware, do hereby certify that the said corporation did on the eighteenth day of July, 1958, file in this office a Certificate of Dissolution, duly executed, sealed and acknowledged, which certificate is now on file in my office as provided by law.

IN TESTIMONY WHEREOF, I have hereunto set my hand and official seal, at Dover, this eighteenth day of July, 1958.

(OFFICIAL SEAL)
GEORGE J. SCHULZ,
Secretary of State
M. D. TOMLINSON,
Asst. Secretary of State

July 24

STATE OF DELAWARE
Office of Secretary of State
To All To Whom These Presents May Come: Greeting:

WHEREAS, it appears to my satisfaction by a duly authenticated certificate certifying that the dissolution of THE FLORA LIFE CORPORATION, a Delaware corporation whose principal office is located at

No. 927 Market Street of the City of Wilmington has been authorized in accordance with the provisions of Section 275 of the General Corporation Law of Delaware, (Chapter 1, Title 8, Delaware Code), as amended, which certificate has been executed, sealed and acknowledged in accordance with the provisions of said Section 275.

Now, therefore, I, GEORGE J. SCHULZ, Secretary of State of the State of Delaware, do hereby certify that the said corporation did on the eighteenth day of July, 1958, file in this office a Certificate of Dissolution, duly executed, sealed and acknowledged, which certificate is now on file in my office as provided by law.

IN TESTIMONY WHEREOF, I have hereunto set my hand and official seal, at Dover, this eighteenth day of July, 1958.

(OFFICIAL SEAL)
GEORGE J. SCHULZ,
Secretary of State
M. D. TOMLINSON,
Asst. Secretary of State

Christiana Calling

Sylvia P. Jones, Correspondent
Phone: EA 8-7413

Plans for a one-story educational wing to be attached to the Christiana Methodist Church were approved recently, with Dr. John N. Link presiding. A bid of \$22,807 and specifications from George Dwyer, Westwood Manor, were accepted.

The new addition will join the present structure at the rear, and provisions will be made for a second story to be added at a later date.

There will be three church school classrooms, a large fellowship room, lavatory facilities, and heater room. The brick and block wing is to be completed in 60 working days, and construction is already well underway.

Henry C. Eastburn, chairman of the building committee, is donating excavation work for the project, and sand will be given by Whittington's Sand and Gravel Company at Bear.

Electrical work will be under the supervision of Horace Eastburn, a member of the building committee, and arrangements for the new plans were made by Evan Miller, co-chairman. Other members of the committee are Mrs. Anna Stafford and Charles L. Kleinbach.

Colleen, daughter of the Rev. and Mrs. D. A. Crosby, celebrated her first birthday on Tuesday.

Stephen Jones, Red Mill Road.

Newark Plumbing Heating Supply Co

Chas. S. W. Buchanan, Pres.
RESIDENTIAL — INDUSTRIAL
PLUMBING SUPPLIES
East Cleveland Ave.
Phone EN 8-3345

In Newark for MAYTAG Washers & Dryers

See THEO. S. JONES
129 E. Main EN 8-1245

CITY OF NEWARK Delaware

SURVEY CHIEF OF PARTY
Applicants
WANTED

Position Specification and Municipal Employment Application forms for the subject position are available and will be received up until 4 PM, EDT Thursday July 31, 1958 in the City Manager's Office, Newark Academy Building, Academy and Main Streets.

July 17-24

STATE OF DELAWARE
Office of Secretary of State
To All To Whom These Presents May Come: Greeting:

WHEREAS, it appears to my satisfaction by a duly authenticated certificate certifying that the dissolution of THE FLORA LIFE CORPORATION, a Delaware corporation whose principal office is located at

No. 927 Market Street of the City of Wilmington has been authorized in accordance with the provisions of Section 275 of the General Corporation Law of Delaware, (Chapter 1, Title 8, Delaware Code), as amended, which certificate has been executed, sealed and acknowledged in accordance with the provisions of said Section 275.

Now, therefore, I, GEORGE J. SCHULZ, Secretary of State of the State of Delaware, do hereby certify that the said corporation did on the eighteenth day of July, 1958, file in this office a Certificate of Dissolution, duly executed, sealed and acknowledged, which certificate is now on file in my office as provided by law.

IN TESTIMONY WHEREOF, I have hereunto set my hand and official seal, at Dover, this eighteenth day of July, 1958.

(OFFICIAL SEAL)
GEORGE J. SCHULZ,
Secretary of State
M. D. TOMLINSON,
Asst. Secretary of State

July 24

STATE OF DELAWARE
Office of Secretary of State
To All To Whom These Presents May Come: Greeting:

WHEREAS, it appears to my satisfaction by a duly authenticated certificate certifying that the dissolution of THE FLORA LIFE CORPORATION, a Delaware corporation whose principal office is located at

No. 927 Market Street of the City of Wilmington has been authorized in accordance with the provisions of Section 275 of the General Corporation Law of Delaware, (Chapter 1, Title 8, Delaware Code), as amended, which certificate has been executed, sealed and acknowledged in accordance with the provisions of said Section 275.

Now, therefore, I, GEORGE J. SCHULZ, Secretary of State of the State of Delaware, do hereby certify that the said corporation did on the eighteenth day of July, 1958, file in this office a Certificate of Dissolution, duly executed, sealed and acknowledged, which certificate is now on file in my office as provided by law.

IN TESTIMONY WHEREOF, I have hereunto set my hand and official seal, at Dover, this eighteenth day of July, 1958.

(OFFICIAL SEAL)
GEORGE J. SCHULZ,
Secretary of State
M. D. TOMLINSON,
Asst. Secretary of State

July 24

STATE OF DELAWARE
Office of Secretary of State
To All To Whom These Presents May Come: Greeting:

WHEREAS, it appears to my satisfaction by a duly authenticated certificate certifying that the dissolution of THE FLORA LIFE CORPORATION, a Delaware corporation whose principal office is located at

No. 927 Market Street of the City of Wilmington has been authorized in accordance with the provisions of Section 275 of the General Corporation Law of Delaware, (Chapter 1, Title 8, Delaware Code), as amended, which certificate has been executed, sealed and acknowledged in accordance with the provisions of said Section 275.

Now, therefore, I, GEORGE J. SCHULZ, Secretary of State of the State of Delaware, do hereby certify that the said corporation did on the eighteenth day of July, 1958, file in this office a Certificate of Dissolution, duly executed, sealed and acknowledged, which certificate is now on file in my office as provided by law.

IN TESTIMONY WHEREOF, I have hereunto set my hand and official seal, at Dover, this eighteenth day of July, 1958.

(OFFICIAL SEAL)
GEORGE J. SCHULZ,
Secretary of State
M. D. TOMLINSON,
Asst. Secretary of State

July 24

STATE OF DELAWARE
Office of Secretary of State
To All To Whom These Presents May Come: Greeting:

WHEREAS, it appears to my satisfaction by a duly authenticated certificate certifying that the dissolution of THE FLORA LIFE CORPORATION, a Delaware corporation whose principal office is located at

No. 927 Market Street of the City of Wilmington has been authorized in accordance with the provisions of Section 275 of the General Corporation Law of Delaware, (Chapter 1, Title 8, Delaware Code), as amended, which certificate has been executed, sealed and acknowledged in accordance with the provisions of said Section 275.

Now, therefore, I, GEORGE J. SCHULZ, Secretary of State of the State of Delaware, do hereby certify that the said corporation did on the eighteenth day of July, 1958, file in this office a Certificate of Dissolution, duly executed, sealed and acknowledged, which certificate is now on file in my office as provided by law.

IN TESTIMONY WHEREOF, I have hereunto set my hand and official seal, at Dover, this eighteenth day of July, 1958.

(OFFICIAL SEAL)
GEORGE J. SCHULZ,
Secretary of State
M. D. TOMLINSON,
Asst. Secretary of State

July 24

STATE OF DELAWARE
Office of Secretary of State
To All To Whom These Presents May Come: Greeting:

WHEREAS, it appears to my satisfaction by a duly authenticated certificate certifying that the dissolution of THE FLORA LIFE CORPORATION, a Delaware corporation whose principal office is located at

No. 927 Market Street of the City of Wilmington has been authorized in accordance with the provisions of Section 275 of the General Corporation Law of Delaware, (Chapter 1, Title 8, Delaware Code), as amended, which certificate has been executed, sealed and acknowledged in accordance with the provisions of said Section 275.

Now, therefore, I, GEORGE J. SCHULZ, Secretary of State of the State of Delaware, do hereby certify that the said corporation did on the eighteenth day of July, 1958, file in this office a Certificate of Dissolution, duly executed, sealed and acknowledged, which certificate is now on file in my office as provided by law.

IN TESTIMONY WHEREOF, I have hereunto set my hand and official seal, at Dover, this eighteenth day of July, 1958.

(OFFICIAL SEAL)
GEORGE J. SCHULZ,
Secretary of State
M. D. TOMLINSON,
Asst. Secretary of State

July 24

STATE OF DELAWARE
Office of Secretary of State
To All To Whom These Presents May Come: Greeting:

WHEREAS, it appears to my satisfaction by a duly authenticated certificate certifying that the dissolution of THE FLORA LIFE CORPORATION, a Delaware corporation whose principal office is located at

No. 927 Market Street of the City of Wilmington has been authorized in accordance with the provisions of Section 275 of the General Corporation Law of Delaware, (Chapter 1, Title 8, Delaware Code), as amended, which certificate has been executed, sealed and acknowledged in accordance with the provisions of said Section 275.

Now, therefore, I, GEORGE J. SCHULZ, Secretary of State of the State of Delaware, do hereby certify that the said corporation did on the eighteenth day of July, 1958, file in this office a Certificate of Dissolution, duly executed, sealed and acknowledged, which certificate is now on file in my office as provided by law.

IN TESTIMONY WHEREOF, I have hereunto set my hand and official seal, at Dover, this eighteenth day of July, 1958.

(OFFICIAL SEAL)
GEORGE J. SCHULZ,
Secretary of State
M. D. TOMLINSON,
Asst. Secretary of State

July 24

STATE OF DELAWARE
Office of Secretary of State
To All To Whom These Presents May Come: Greeting:

WHEREAS, it appears to my satisfaction by a duly authenticated certificate certifying that the dissolution of THE FLORA LIFE CORPORATION, a Delaware corporation whose principal office is located at

No. 927 Market Street of the City of Wilmington has been authorized in accordance with the provisions of Section 275 of the General Corporation Law of Delaware, (Chapter 1, Title 8, Delaware Code), as amended, which certificate has been executed, sealed and acknowledged in accordance with the provisions of said Section 275.

Now, therefore, I, GEORGE J. SCHULZ, Secretary of State of the State of Delaware, do hereby certify that the said corporation did on the eighteenth day of July, 1958, file in this office a Certificate of Dissolution, duly executed, sealed and acknowledged, which certificate is now on file in my office as provided by law.

IN TESTIMONY WHEREOF, I have hereunto set my hand and official seal, at Dover, this eighteenth day of July, 1958.

(OFFICIAL SEAL)
GEORGE J. SCHULZ,
Secretary of State
M. D. TOMLINSON,
Asst. Secretary of State

July 24

STATE OF DELAWARE
Office of Secretary of State
To All To Whom These Presents May Come: Greeting:

WHEREAS, it appears to my satisfaction by a duly authenticated certificate certifying that the dissolution of THE FLORA LIFE CORPORATION, a Delaware corporation whose principal office is located at

No. 927 Market Street of the City of Wilmington has been authorized in accordance with the provisions of Section 275 of the General Corporation Law of Delaware, (Chapter 1, Title 8, Delaware Code), as amended, which certificate has been executed, sealed and acknowledged in accordance with the provisions of said Section 275.

Now, therefore, I, GEORGE J. SCHULZ, Secretary of State of the State of Delaware, do hereby certify that the said corporation did on the eighteenth day of July, 1958, file in this office a Certificate of Dissolution, duly executed, sealed and acknowledged, which certificate is now on file in my office as provided by law.

IN TESTIMONY WHEREOF, I have hereunto set my hand and official seal, at Dover, this eighteenth day of July, 1958.

(OFFICIAL SEAL)
GEORGE J. SCHULZ,
Secretary of State
M. D. TOMLINSON,
Asst. Secretary of State

July 24

STATE OF DELAWARE
Office of Secretary of State
To All To Whom These Presents May Come: Greeting:

WHEREAS, it appears to my satisfaction by a duly authenticated certificate certifying that the dissolution of THE FLORA LIFE CORPORATION, a Delaware corporation whose principal office is located at

No. 927 Market Street of the City of Wilmington has been authorized in accordance with the provisions of Section 275 of the General Corporation Law of Delaware, (Chapter 1, Title 8, Delaware Code), as amended, which certificate has been executed, sealed and acknowledged in accordance with the provisions of said Section 275.

Now, therefore, I, GEORGE J. SCHULZ, Secretary of State of the State of Delaware, do hereby certify that the said corporation did on the eighteenth day of July, 1958, file in this office a Certificate of Dissolution, duly executed, sealed and acknowledged, which certificate is now on file in my office as provided by law.

IN TESTIMONY WHEREOF, I have hereunto set my hand and official seal, at Dover, this eighteenth day of July, 1958.

(OFFICIAL SEAL)
GEORGE J. SCHULZ,
Secretary of State
M. D. TOMLINSON,
Asst. Secretary of State

July 24

STATE OF DELAWARE
Office of Secretary of State
To All To Whom These Presents May Come: Greeting:

WHEREAS, it appears to my satisfaction by a duly authenticated certificate certifying that the dissolution of THE FLORA LIFE CORPORATION, a Delaware corporation whose principal office is located at

No. 927 Market Street of the City of Wilmington has been authorized in accordance with the provisions of Section 275 of the General Corporation Law of Delaware, (Chapter 1, Title 8, Delaware Code), as amended, which certificate has been executed, sealed and acknowledged in accordance with the provisions of said Section 275.

Now, therefore, I, GEORGE J. SCHULZ, Secretary of State of the State of Delaware, do hereby certify that the said corporation did on the eighteenth day of July, 1958, file in this office a Certificate of Dissolution, duly executed, sealed and acknowledged, which certificate is now on file in my office as provided by law.

IN TESTIMONY WHEREOF, I have hereunto set my hand and official seal, at Dover, this eighteenth day of July, 1958.

(OFFICIAL SEAL

COMFORT CONDITIONED for you

for lower operating costs . . . more comfort for your family

Delaware's loveliest new home at
FAIRFIELD in NEWARK, Delaware

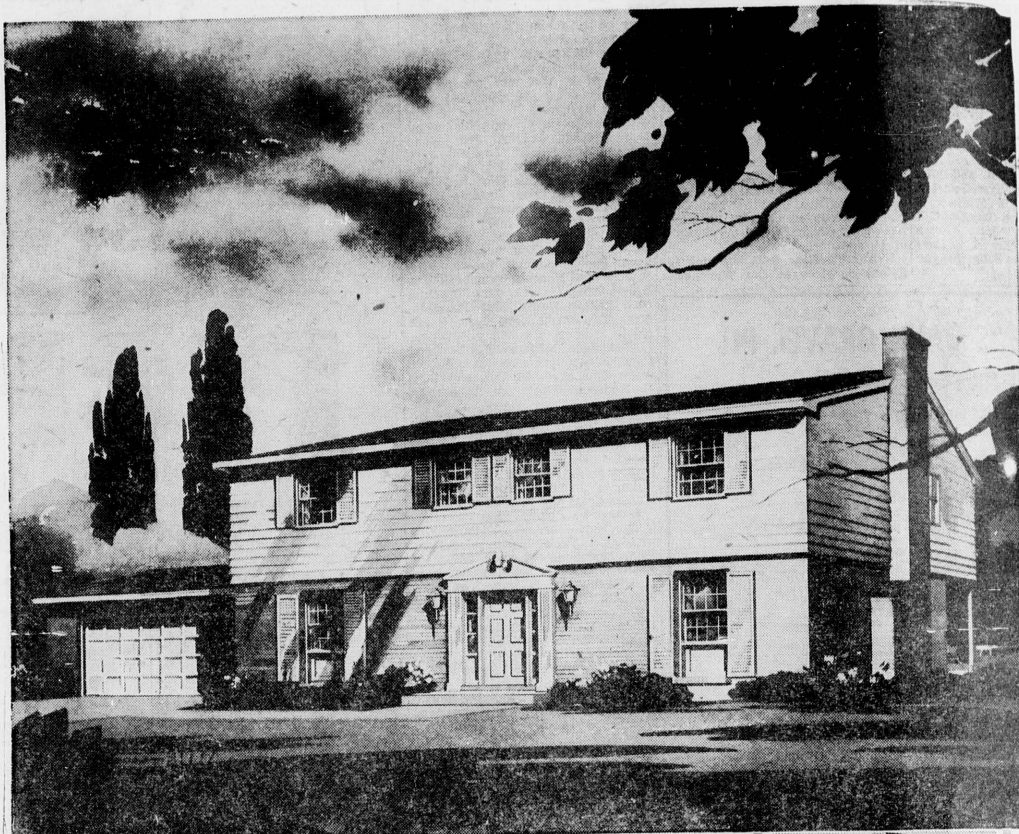
BEAUMONT

EXECUTIVE

"A return to the almost forgotten concept of gracious living" . . . this is the "BEAUMONT" at Fairfield. You'll enjoy life more here because you'll live life to the fullest . . . in these big, handsome homes . . . on wide, wide lots overlooking some of the loveliest countryside in all Delaware. Fairfield is for families who want "breathing room" . . . families who cherish the dignity of home and land ownership. If you're looking for a home built for the future — but with a firm hold on America's architectural heritage of classic simplicity . . . if you want to live surrounded by the splendor of unspoiled nature — then the BEAUMONT at FAIRFIELD is for you!

THE "BEAUMONT" COLONIAL — offers large entrance foyer, living room, dining room, complete kitchen, den, powder room, two baths, four bedrooms, dressing room adjoining master bedroom, full basement, two car garage.

The "Beaumont" is Delaware's comfort conditioned home . . . comfort conditioned with OWENS CORNING FIBREGLAS INSULATION providing savings in heating and cooling of up to fifty per cent. The "Beaumont" is Delaware's first home to use LIFETIME ALUMINUM SIDING with baked enamel finish . . . no painting, no warping, no staining — ever!

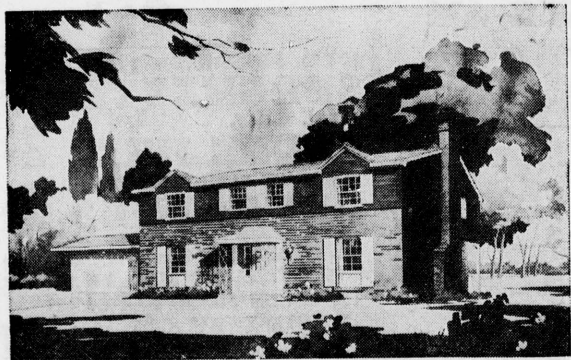


OPENING SATURDAY AT 1 P. M.

in Delaware's
smartest suburban
location

Fairfield

NEWARK, DELAWARE



THE "BEAUMONT" PROVINCIAL — comfort, beauty, construction imagination are evident in every line of this beautiful new home LOCATED ON 260 ACRES OF ROLLING COUNTRYSIDE SURROUNDING THE NEWARK COUNTRY CLUB in NEWARK, DELAWARE!



THE "BEAUMONT" GEORGIAN — still another version of the "Beaumont" Executive offering the same number of large, comfortable rooms. All three "Beaumont" models are yours at the same low price.

Each of the three "Beaumont" models priced at \$29,900



Fairfield

CONSTRUCTION COMPANY

500 N. JACKSON STREET
Olympia 4-7734

NEWARK FIELD OFFICE
ENDICOTT 8-5558

This is a
**COMFORT
CONDITIONED
Home**

FULLY INSULATED with FIBERGLAS

Full HOUSEPOWER for Electrical Living
Today and Tomorrow

Equipped with GAS

Featuring New Ways to Live Better

**YEAR-ROUND COMFORT-
CONDITIONING**
opens a whole new world of household comfort. Full Fiberglas* Insulation lets you forget the weather . . . will help keep you warm in winter, cool in summer . . . saves up to 50% on fuel bills! *T.M. O.C.F. Corp.

DIRECTIONS: From Wilmington, follow Kirkwood Highway (Route 2) to Main Street in Newark. Follow Main Street to intersection of New London Road (Route 896); follow New London Road 1½ miles to Fairfield. From Elkton, follow Elkton Road to intersection of Main Street and New London Road in Newark. Follow New London Road 1½ miles to Fairfield. (Fairfield's Nottingham Road Entrance will be opened soon).

THE NEWARK POST

Founded January 26, 1910, by the late Everett C. Johnson

An Independent Newspaper
Published Every Thursday by The Newark Post, Inc.
14-16 Thompson Lane, Newark, Delaware
Locally and Independently Owned and Operated

Legal and Display advertising rates furnished on request.
In Memoriam and Cards of Thanks 7 cents per agate line.
A. T. WARE, PUBLISHER
W. H. WAGGAMAN, JR., EDITOR
Based on second class matter, March 10, 1910, at the Postoffice at Newark, Delaware, under the Act of March 3, 1879.
The subscription price of this paper in the United States is \$2.00 per year in advance. Canadian and Foreign subscriptions \$3.00 per year in advance. Single copies 5 cents. Make all checks payable to The Newark Post.

NATIONAL EDITORIAL
ASSOCIATION
SUSTAINING MEMBER

Newark, Delaware, Thursday, July 24, 1958

EVERY DAY

A short time ago thousands of young people graduated from schools and colleges throughout the Nation. And some of them said by William Park, chairman of American Stores, would stay in the minds of all of them:
"We must recognize that formal education is not an end in itself. It is rather a period of preparation for the duties of life and the opportunities of a career.
"There is really no time in life where we can say, 'My education is complete.' As we work, we learn; as we learn, we progress; as we advance, we increase in knowledge.
"So for all of us, whether we are recent graduates from high school or starting retirement, we look forward to new experiences and every day is commencement day."

PROCLAMATION OF NATIONAL FARM SAFETY WEEK

WHEREAS, the strength of our Nation depends in part upon the Agriculture and Conservation and the increased safety therein; and
WHEREAS, we, the citizens of Newark, Del., and vicinity live in a farm community;
NOW BE IT RESOLVED that in recognition of National Farm Safety Week, July 20 through July 26, in conjunction with the New-Kiwanis Club's Agriculture and Conservation program to improve safety, we rededicate ourselves to the recognition of farm hazards and the protection against such hazards.

By order of
FRANK M. DURNALL
Mayor, City of Newark
July 24, 1958

BILL BUY

Edler Farms, Inc., Glasgow, has leased the registered Guernsey Zettler Farms Levity Holstein according to the American Dairy Cattle Club.

For
Modern Living
at its
BEST...

SPLIT LEVEL HOME
33 Park Drive
SILVERBROOK

Within Walking Distance of
Rittenhouse Park

3 Bedrooms, 2-Baths

Living Rm, Dining area

Very Modern Kitchen

Recreation & Utility
Rooms

Garage—Corner Lot

Priced to SELL

\$20,500

ALL...

T.B. O'Toole

Inc.

REALTORS

61 E. Main St.

Newark EN 8-8716, 8-2538

30th Old Fiddlers Picnic Scheduled For August 2

The 30th annual Old Fiddlers picnic will be held Saturday, Aug. 2, at Lenape Park on the historic Brandywine, some four miles from West Chester, Pa.

This old fashioned frolic lasts from 10 a.m. until midnight, and all fiddlers, musicians, singers and dancers invited to take part.
Christian Sanderson of Chadds Ford will be chairman of the day and Ben Kelly of Coatesville will have charge of the dancing.
Man is capable of all things.

Newark Recreation Ass'n Playgrounds West Park Place Third In A Series

Mardi Gras atmosphere—clowns, acrobats, three-ring acts, a midway, pony rides—and happy confusion characterized the West Park Place playground, site for the All-Playground Circus, last Friday, as 600 boys and girls participated.
The popular, off-street school location has served as a center of activity for the past four summers. The first playground program was an afternoon period in 1955 staffed by one director with the aid of numerous volunteers. Its popularity provided impetus for a full day program the following summer, and its population increase warranted all-time dual leadership for the all day program last year. Under Newark Recreation Association staff member, and Anthony McCann, the 1958 program has continued to increase in scope and popularity.
The 10-acre school site turned over to the Newark Recreation Association for summer use by the Newark school district, is one of the best equipped in the seven playground system.

There are three basketball half-courts; two large well-marked multi-purpose black top areas, swings, a slide and climbing devices to augment the open field and softball diamond.
The open shade area provides ample space for arts and crafts, quiet games, badminton, volleyball, and tot-lot activities. The American Recreation Pony League baseball diamond is also located on this site and is used as a playground facility during the day.

West Park Place will be the scene for Recreation Day, climax of the summer season, with an operetta, tournaments and contests.
Hundreds of daily visitors to West Park Place have enjoyed such special events as the Fourth of July party; pet and hobby shows, foreign coin and doll exhibits and dances.

West Park Place boasts of the only chess team—an outgrowth of keen interest in checkers.
Ken and George Shuster, Cris Hall, Sandy Worrell, and Kathy Preston make up the junior leader corps which helps with general leadership of the playground. Several of the older girls are also helping Joan Lundy, roving tot-lot director, with her well attended program.

Pat Ouchewski and Sandy Worrell are serving as assistant instructors in the arts and crafts program. The group is starting textile work with block printing and stenciling on fabrics.

An active Parent Playground Association has been formed, under the leadership of Thomas Worrell, to build an additional work table and a sand box.

It's not all work with the West Park Place Parent Playground Association, as families get together for picnics, wieners roasts and square dancing.

Mrs. Anthony Marcantonio and Clarence Hagerty
Dies In Hospital
Of Heart Ailment

Funeral services for Clarence George Hagerty, 81, a retired National Vulcanized Fibre Company employee at Yorklyn, were held this afternoon in the R. T. Jones Funeral Home, with interment in Silverbrook Cemetery. The Rev. George H. Piqueron III, of Cedars Methodist Church officiated.
Retired four years ago after 42 years of service with the fibre company, Mr. Hagerty, of 8 Jackson Avenue, The Cedars, died Monday in the Wilmington General Hospital where he had been a patient for a week with a heart condition.
The son of William and Lydia Hagerty, he was the husband of Mrs. Lena Mae Hagerty. He had lived in The Cedars for the past 33 years.

He was a member of the Red Men Lodge at Corner Ketch; Odd Fellows Lodge, Hockessin; the AOUW Lodge; and a member of The Cedars Church.
In addition to his wife, he is survived by three sons, Leroy Henry Hagerty, Marshallton; Melvin Raymond Hagerty, Brookland Terrace, and Clarence George Hagerty, Jr., Cedars; three brothers, Josiah Hagerty, Kennett Square, and Raymond Hagerty, Hockessin; seven grandchildren; and several nieces and nephews.

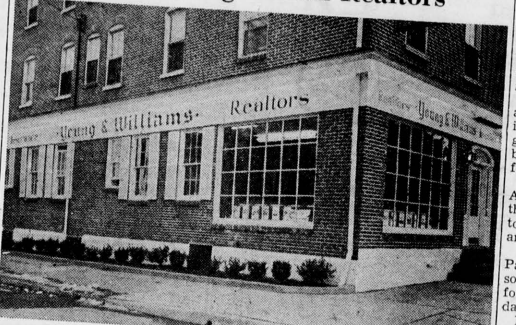
Stock Car Race Program Scheduled For Firemen

The Harrington Volunteer Fire Company has completed plans for its sixth annual benefit program of stock car racing at the fairgrounds just south of Harrington, on U. S. Route 13.
The stock car program has been scheduled for Saturday night, Aug. 2, with a rain date of Aug. 9. First event will get under way promptly at 8:30 p.m.

CITY OF NEWARK Delaware PUBLIC WORKS DEPARTMENT New London Avenue Water Main CONTRACT #W-114

Plans, Proposal Forms, and Specifications for the subject project may be had for a \$5.00 non-refundable fee at the Finance Department Office and sealed bids accompanied with a bond for furnishing the materials and work required therein will be received until 4 PM, EDT Thursday August 7, 1958 in the Office of the City Manager, Newark Academy Building, Academy & Main Streets.
July 24; Aug. 7

YOUNG & WILLIAMS Your College Town Realtors



YOUNG & WILLIAMS
PHONE EN 8-8538

Mrs. Jennie Smith Funeral Services To Be Held Friday

Funeral services for Mrs. Jennie Smith, 77, wife of Walton Smith of 95 East Cleveland Avenue, will be held Friday at 2 p.m. in the funeral parlors of R. T. Jones, Newark, with interment in Cherry Hill Cemetery. Friends may call tonight from 7 to 9 at the funeral home.
The daughter of Lewis and Mary Delaware Hospital where she had been a patient for a week.
Mrs. Smith, who was born in Pennsylvania, had lived in Newark for 50 years. She was a member of the Newark Methodist Church.
In addition to her husband, she is survived by two daughters, Mrs. Ione Challenger, Wilmington, and Miss Elma Smith, a son, Norris Smith, both of Newark; a sister, Mrs. David Shenberger, Steubenville, O.; two grandchildren; and four great-grandchildren.

**GET AN EARLY JUMP
ON W-I-N-T-E-R! Reserve Next Winter's
GULF Heating Oil Supply . . . TODAY!**

Check This List to see how it will pay you to order your Fuel Oil NOW!

1. Automatic worry-free delivery
Assures you of a safe supply—always
2. Unsurpassed heating performance
Super clean-burning GULF Solar Heat is the finest heating oil you can buy—ANYWHERE!
3. Convenient Budget Payment Plan
Nine or 12 monthly installments
4. Dependable Burner Service
Keeps your equipment in top condition
5. Your closest source — Home-Owned

NEWARK Lumber Co.
221 EAST MAIN • NEWARK 8-8504

Everything to Build Anything

Newarks Main Street Merchants Semi-Annual DOLLAR DAYS



3-BIG DAYS
JULY 24-25-26

- SUPPORT THESE ADVERTISERS FOR BEST BARGAIN BUYS
- | | | |
|--|---|--|
| DON GREGOR
JACKSON'S HARDWARE
DANNEMAN'S
PILCHER'S SHOE STORE
DALE'S JEWELERS
VERA
INDEN'S FOR YOUNG FOLKS | DORSMAN'S HOBBY TOYLAND
COLONIAL JEWELERS
GRANT'S
EAGLE FURNITURE COMPANY
MORT'S REMNANTS
MILLER'S
CROCKERY DEN | SHARRAH'S APPLIANCE
NEWARK ELECTRIC
BING'S BAKERY
LES FAMILY STORE
NATIONAL 5 & 10 |
|--|---|--|

Mrs. Willford Eppes are in charge of communications center, while Mrs. Bruce Pollock and Mrs. Thomas Worrell make up the hospitality group.
Connie Turner, Pat Doordan, Tom Worrell, and Barbara Campbell are the safety patrol.
Mrs. Jane Walton Dann has been on the Recreation Association staff for six years. Starting as a high school junior, she had directed the George Read Village playground for two seasons and the Cleveland Avenue playground for two summers before becoming director of West Park Place last year. She is a 1938 graduate of the University of Delaware, a home economics major.
Anthony McCann, assistant director, is a newcomer to the staff. A native of the Newark area, he graduated from Middletown High School this year where he was an athlete.

Wesley Mennonite Chapel
Route 896 N.W. of Newark, Del.
Special Evening Services
August 8 thru August 15
SUNDAY SCHOOL—10 a.m. MORNING WORSHIP—11 a.m.
EVENING SERVICES—First Sunday of each month—7:30 p.m.
Pastor Herman N. Glick, Atglen, Pa.
Phone LY 3-5757

SUNSET PARK On U. S. Route 1 Between West Grove and Oxford, Pa.

**SUNDAY
JULY 27
JOHNNY
and
JACK
With
KITTY WELLS
from WSM Grand Ole Opry.**
ROMA JACKSON
and His Band
EDDIE MATHERLY
and Rhythmaires
ALEC and OLA BELLE
and Band

**FREE !
ONE 5X7
ENLARGEMENT
with each roll
of Black & White
Film Developed**

1 - Day Service for Black & White
3 - Day Service for Color Film
at your friendly

Newark Pharmacy, Inc.
183 E. MAIN STREET
NEWARK, DELAWARE
PHONE EN 8-8730

OAKLANDS

HERE is
real estate
VALUE

Enter a world
of Gracious
Living!

**Custom-Built
HOMES
for
YOU**

CALL EN 8-8315
for information

HUGH F. GALLAGHER, Jr.
Developer and Builder

Summertime and the
tradin' is easy, during...

**FORD'S GREAT
Summer
TRADING PICNIC**

YOU CAN BUY A NEW FORD
FOR EVEN LESS RIGHT NOW!

Extra-big allowance on your car
Easiest payment terms available

F.A.D.A.F.
FOR A BETTER BUY IN A USED CAR OR TRUCK, BE SURE TO SEE OUR OR OTHER SELECTIONS

FADER MOTOR COMPANY
442 WEST MAIN
Newark
Phone EN 8-2571

Six

Local Playgrounds Offer Family Nite Program Features

Family Nights highlight National Week, July 21-23 on the seven playgrounds conducted by the Newark Recreation Association.

Chestnut Hill Estates featured a family night pizza party, a foreign doll show, stamp and costume show, and a scavenger hunt; while the Medill playground offered a United Nations party, badminton tournament, nationality quiz show, foreign coin display and a foreign song festival.

Brookside sponsored a foreign doll show, scavenger hunt, foreign costume and coin show; West Park Place, a family night square dance, and a foreign coin and doll show; while at George Read Village, a family night featured movies, a peanut hunt, a father-son baseball game, and a Rittenhouse Park outing.

At Cleveland Avenue, a family night featured a sale, a judging contest and a father-son field day were featured attractions, while New London Avenue offered a family night weiner roast and a Rittenhouse Park outing.

RAMBLER SALES RECORD

Rambler sales in American Motors' Philadelphia zone soared 55.7 per cent in the first six months of 1958, compared with the comparable period of last year.

College Trained Man

LIFE INSURANCE COMPANY

SPECIALIZING in business and estate analysis, desires to add to its sales staff, a college trained man, 25 to 45 years of age, capable of dealing with important clients and residing in the Wilmington area. This man will receive adequate compensation from the start and training in an advanced analysis technique. The average earnings of the established man in our organization is in excess of \$10,000. Previous experience not necessary, but must have college training and be of potential management timber.

Write or call Charles Curtis, Connecticut General Life Insurance Co., 211 Medical Arts Bldg., Wilmington 1, Delaware. . . . OL 4-2413 or in the evening call Media, LOwell 6-7689.

CITY OF NEWARK

Delaware

POLICE TRAINEE

Applicants

WANTED

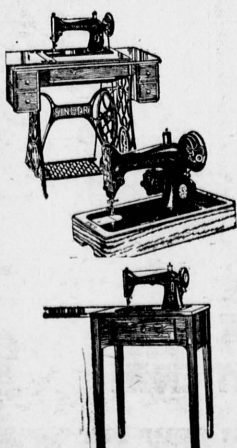
Position Specification and Municipal Employment Application forms for the subject position are available and will be received until 4 PM, EDT Thursday July 31, 1958 in the City Manager's Office, Newark Academy Building, Academy & Main Streets.

July 17-24

COME IN NOW!

TO THE

SINGER SALE



PRICES START

TREADLES

from \$4.95

PORTABLES

from \$9.95

CONSOLES

from \$14.95

LOW DOWN PAYMENT—EASY BUDGET TERMS

SINGER SEWING CENTER
Newark Shopping Center

Music Circus Stars in "Happy Hunting"



Billie Worth (c) stars, and Grace Genteel and Michael Maule play leading roles in "Happy Hunting," which is entering its second and final big week at the Brandywine Music Circus, Concordville, Pa. The Lindsay-Crouse musical will play through Aug. 3 at St. John Terrell's canvas-top theatre.

All-City Circus

(Continued from Page 1)

Zoo keeper was Michael Perry; drum majorettes were Mary Lou Perry, and Elaine Taylor and Linda Groff, and animals were enacted by Paul Gregg, David Sonnenfeld and Dana Taylor.

Brookside had a "penny luck" booth and circus acts with Marjory Hendricks, Cathy Thomas, Peter Bazzel and Patti Joe Cronin aiding with the booths, while Debbie

WHEN SHOPPING
LOOK FOR
STORES DISPLAYING
THIS EMBLEM

RECOMMENDED BY
GREETERS, INC.
Newark-Wilmington Service

GREETERS recommends dependable firms. In these stores you can buy with confidence.

Hostess
MRS. ANTHONY J. MAYO
14 McCord Drive
Phone EN 8-2766

Winners Reported For Circus Week In NRA Program

Winners in Circus Week contests have been announced by The Newark Recreation Association. At the Medill playground prize-winners included Susan Melson for the most colorful animal; Janet Taylor for the animal with longest tail; Karen Edwards for the animal with shortest tail.

At Chestnut Hill, pet show prize winners were Ricky Edwards for the smallest; George Thomas, largest; and Jeanie Wronowicz for the most colorful animal. Janet Taylor for the animal with longest tail; Karen Edwards for the animal with shortest tail.

At Brookside, prize winners were Barbara Horswood for the smallest, and Jean Ann Brosch for the largest animal; Patricia Sauserman for the dog that does the most tricks; Gary Peterson for the largest number of pets; Andrea Moran for the cutest puppy; Jay Grant for the most ferocious animal; Danny McCardle for the most unusual animal; Wayne Atkinson for the most colorful animal; Lyn Moran for the cat with the longest tail; Jack Haskin for the dog with the longest tail; Beth

Maholchic and Maureen Arnold were in the horse act; Donnie and Mary Ellen Lancasty, butterfly act; the mother and daughter team were Carole and Sharon Cherrix, and car drivers were Ronnie Damenski, George McCullen, Russell Roderick, Danny McArdle, Charles Durante, David Osburn, David Case, Greg Smith and Charles Williams.

The baton dance was performed by Jean Anne Brosch, Linda Sauserman, Andrea Lee and Rhonda Lynn Moran, and Beth Man. Included in the dance act were Marjory Hendricks, Carol Ann Smith, Pat Sauserman, Diane Bednarek, and Sherry, Scotty and Allida Grossman.

New London Avenue playground featured a side show and bean bag throw with Bradley Lane, Sharon and William Brown, Juanita Hayman, Gail and Nat Watson, Morris Lane, Ralph and Frederick Conkey.

LETTERS TESTAMENTARY
Estate of Leonard White Deceased. Notice is hereby given that Letters Testamentary upon the Estate of Leonard White late of Christiana Hundred, deceased, were duly granted on July 17, 1958 and all persons indebted to said estate are requested to make payments to the Executrix without delay, and all persons having demands against the estate are requested to exhibit and said Executrix on or before the Tenth day of April A. D. 1959 or abide by the law in this behalf.

Address: H. Newton White, Attorney-at-law, 2614 Market Street, Wilmington, Delaware.

Mildred Singler, Executrix

July 17, 24; Aug. 7.

STATE THEATRE

2 Shows 7-9 p.m.
Saturday Continuous from 2 p.m.
Sunday Eve 8 p.m.

THURSDAY JULY 24
"I Accuse"

FRI., SAT. JULY 25, 26
2 Big Features
Joel Macrea
"The Tall Stranger"

and
The Bowery Boys
"Looking For Danger"

SUN., MON. JULY 27, 28
Shirley Booth
"Hot Spell"

TUES., WED. JULY 29, 30
Nat King Cole
"St. Louis Blues"

Man for the cat, and Debbie Gregg for the dog having the shortest tails.

At West Park Place, prize winners were the Fieldhouse girls for the smallest; Mike Pollock and Wayne Calvert for the most unusual pet; Sandy Worrell for the pet doing the best trick; Phil Gibbs for the cutest; Linda Marcantonio and Christine Hall for the prettiest; and Robert Gordon for the ugliest pet.

NARDO'S
Delaware Shoe Repair
16 Academy St.
PHONE EN 8-9890
Closed Wed nites during summer

Christian Science Services
and Sunday School
In Newark, Sundays, 11 A.M.
NEW CENTURY CLUB
141 E. Delaware Ave.
— ALL ARE WELCOME —

PAINTING

Interior & Exterior
SPRAY PAINTING

Phone EN 8-3339
EVES — EN 8-7008

ANDREW ROWINSKI

Wheel Alignment

and
Brake Service

BUCK'S TEXACO

140 E. Cleveland Ave.

PHONES EN 8-9987 . . . or EN 8-5741



Choice CEMETERY LOTS AVAILABLE

IN THE HEAD OF CHRISTIANA CEMETERY
NEWARK, DELAWARE

- Contact -
A. F. FADER, Secretary

10 PLACES to Get Money

Every office of Wilmington Trust makes Personal Loans—at the same low bank rate.

Every office of Wilmington Trust has men or women who will sit down and talk over your money problem with you. Considerate personal attention.

Every office of Wilmington Trust is open Friday nights. Come in then if more convenient.

EASY MONTHLY PAYMENT PLAN

You Get	24 Payments	18 Payments
\$ 300	\$ 14.25	\$ 18.50
800	38.00	49.11
1200	56.00	72.67
1500	70.00	90.83
2500	116.67	151.39

(Life Insurance Included)

If you are employed, if your credit standing is good, if you need money—then come to any of the ten offices of Delaware's Largest Bank and ask about a Personal Loan. Thousands of men and women have gotten off to a fresh start at Wilmington Trust. We will try our best to help you.

WILMINGTON TRUST COMPANY

Wilmington, Delaware

TENTH AND MARKET

Tenth and Shipley 2120 Market 3605 Market
CLAYMONT DELAWARE CITY GREENVILLE
NEWARK NEW CASTLE NEWPORT

All Offices Open Friday Nights

Brandywine Polo Club Begins 10th Week Play

Brandywine Polo Club's 10th week of high-goal arena and outdoor polo at Toughkenamon, Pa., will feature a six-period match on the 300x150-yard outdoor field this Sunday with Brandywine vs. the All-Stars at 3 p.m.

Adie von Gontarl, Bill Ylvisaker and George Skakie, Jr., of Purchase, N. Y., will ride against Brandywine's varsity.

Children under 12 years of age are admitted free.

Fred Somers

(Continued from Page 1)

The department will continue to cooperate with the school of home economics in the study of human nutrition and to provide analytical services such as analysis of soil samples from farmers and experimental plots and to provide advisory service in chemistry and biochemistry for other school of agriculture staff members.

Among the research projects now underway in the department are a study of the chemistry of the walls of plant cells; the biochemical changes which occur during the ripening and marketing of fruits and vegetables; chemical changes

Nardo's Delicatessen

AND SANDWICH SHOP

Subs — Salads — Sodas — Pizzas
Open daily except Sun 8 am-10 pm
EN 8-9868 24 Academy St.

in and on the skin of fresh broilers following evisceration; the biochemistry of the browning of mushrooms in fresh market channels.

A process developed in the school of agriculture to wash and package fresh mushrooms to delay browning

has attracted wide attention recently, Dr. Somers reported.

The process was developed by Donald Hughes of the department of agricultural biochemistry and food technology in cooperation with members.

Robt. T. Jones and Son

FUNERAL DIRECTORS

PHONE EN 8-1627

122 West Main Street
NEWARK, DELAWARE

STONE COLONIAL

70 ACRES

This attractive early American stone colonial home located in the rolling hills of Chester County is being offered for sale for the first time. Just 6 miles from Newark & only 11 miles from Wilmington, this home offers the finest in country living. The present owner has put the finest materials available into remodeling so that there are absolutely no repairs needed.

The first floor has a lovely living room with a fireplace, large dining room with fireplace, study, powder room & spacious modern kitchen & breakfast room. There are 3 big bedrooms (2 with fireplaces) 2 modern baths & separate maid's room & bath. Excellent storage space in the attic. There is also a lovely patio with a magnificent view of the distant hills.

Also included is a large stone bank barn with 3 stalls, tack room, etc., all in good condition. Why not make an appointment to see this home today. For additional details and directions call our office. Offered at \$60,000.

SWEENEY & LUKENS

523 Welsh St.

Chester 3-7183

IT'S SO EASY TO COOK-UP A



AND GET FREE STAMPS WITH EVERY PURCHASE!

55 MARROWS ROAD
BROOKSIDE SHOPPING CENTER
THURS. til 9 - FRI. til 10 SAT. 10 to 6
MERCHANT GREEN Stamps from FOOD FAIR

Cook Up a **COOKOUT** with P.S.G. Top Quality
Gov't Graded "CHOICE"
7-Inch Cuts

RIB STEAKS lb. **69¢**

Cook Up a **COOKOUT** with P.S.G. Fresh

Ground CHUCK Sold in 3-lb. Units Only lb. **65¢**

CUBED STEAKS lb. **89¢**

Chicken BREASTS Fresh Frozen 5-lb. Units Only \$2.95 lb. **59¢**

Star-Kist Tuna Chunk Style 6½-oz. can 29¢ 12½-oz. can 57¢

Pure Preserves F.F. Peach, Apricot or Pineapple 24-oz. jar 45¢

Salad Dressing Fyne-Taste 16-oz. jar 23¢ qt. 39¢

Kosher Dill Pickles Fyne-Taste Fresh Pack qt. jar 29¢

F.F. Deluxe Brand Salad and Cooking Oil 16-oz. bot. 29¢ 32-oz. bot. 55¢

Lemonade F.F. Deluxe Frozen 6-oz. cans 59¢

Steak Cod Fresh Sliced Genuine Boston lb. 33¢

Canned Hams Armour Star 4 lb. can \$3.79

Tube O' Cheez NEW! Sharp, Mild or Blueille 8-oz. tube 39¢

THE PEACH HARVEST IS ON! . . . Yellow Elberta Freestone

PEACHES 3 lbs. **23¢** ¼-bushel basket **\$2.95**

NEW . . . EXCITING! MERCHANTS GREEN STAMP Catalog of Gifts

NOW! . . . Millions of shoppers find an added bonus with Merchants Green Stamps. They don't need an Aladdin's lamp to take their choice from the greatest selection of famous, national-brand, distinguished merchandise. The newest, most fabulous catalogue of Merchants Green Stamps is just out. Pick up your copy today from your Food Fair cashier. Remember, you get free Merchants Green Stamps with every purchase from friendly Food Fair!

STORE - WIDE REDUCTIONS

On All Summer Merchandise
Open Thursday & Friday 'Til 9 P.M.

JACKSON'S

MIGHTY Dollar Day Buys

Governor's Day Switch Occurs As Boggs Pays Tribute To Kent-Sussex Fair Heads

Governor's Day at the Kent and Sussex County Fair is observed annually in tribute to the governor and a list of guests chosen by the chief executive. This tradition, however, was broken this year when Governor J. Gordon Smith, Jr., presented newly elected President J. Gordon Smith with the Kent and Sussex County Fair. The Governor's Day at the Kent and Sussex County Fair is observed annually in tribute to the governor and a list of guests chosen by the chief executive. This tradition, however, was broken this year when Governor J. Gordon Smith, Jr., presented newly elected President J. Gordon Smith with the Kent and Sussex County Fair.

Elton R. Griner Dies Following Heart Attack

Funeral services for Elton R. Griner, 46, who was pronounced dead on arrival at The Memorial Hospital on July 14, following a heart attack, were held last Friday from the Kenneth B. Carl Funeral Home, Bridgeport, N. J.

Newark AAUW Schedules Tour, Chicken Barbecue

Members of the Newark branch, American Association of University Women and their families will attend a chicken barbecue to be given by the Wilmington branch on Monday, Aug. 11, at Thorndike's Fruit

Home Economists Visit At Newark Before Congress

Home economists from all parts of the world will visit Newark this week prior to attending the ninth International Congress on Home Economics at the University of Maryland, July 28 through Aug. 2.

FAST APPLIANCE SERVICE

By Expert Mechanics IN RADIO CONTROLLED TRUCKS

Washers Dryers Electric Stoves Electric Water Heaters Garbage Disposals Dishwashers

Refrigerators Commercial Refrigeration Freezers Air Conditioners Milk Coolers Store Refrigeration

Commercial Refrigeration & Carrier Air Conditioning Sales

HARVEY REFRIGERATION CO.

27 Tyre Ave. Newark, Del. PHONE ENDICOTT 8-8579

At Your Fingertips IN NEWARK

The privilege of choosing among a wide selection of home designs—and finding one that exactly meets your taste and your needs.

Here in the beautiful country club setting of Nottingham, Franklin Builders offers you 5 distinctly different models—20 variations in design. Come see.

3, 4 & 5-BEDROOM HOMES IN A HOST OF CONTEMPORARY AND TRADITIONAL DESIGNS FROM \$17,800

THE BENTLEY SECTION AT NOTTINGHAM

Nottingham Road (West Main St.) Opposite Newark Country Club

Open Mon. to Fri., 1 to 9; Sat., Noon to 6:30; Sun., Noon to 9

BE OUR GUEST AT THE BRANDYWINE MUSIC CIRCUS

The first 35 people who visit our model homes will each receive a pair of tickets for Saturday's 6 P.M. performance. The first 35 who visit with us Saturday will each receive a pair of tickets for Sunday evening's performance.

FRANKLIN BUILDERS

Endicott 8-8569

Why move? If you need more space, add a new room—two rooms, a porch or patio.

Yes, regardless of your space requirements, you can meet those requirements with a Farmers Bank Home Improvement Loan. Decide what you need. Call in contractors for estimates, then see

Farmers for the money to pay. You can have up to \$3,000 at low bank rates... with terms up to 36 months. It's the easiest, most convenient way to have a bigger home at lowest cost.

FARMERS BANK OF DELAWARE

Member Federal Deposit Insurance Corporation DELAWARE'S OLDEST BANK

Rated No. 1

NEAREST CLOTHES DRYER REMOVAL SERVICE

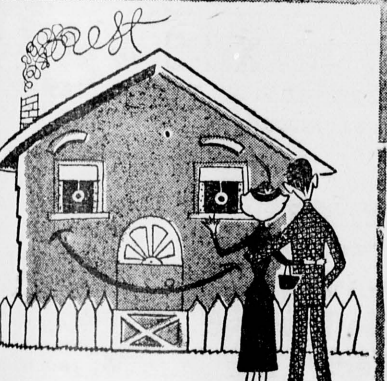
TESTING CO. INC.

38 FRIGIDAIRE

ULTRA-CLEAN WASHER

SEE THE PROOF AT NEWARK ELECTRIC

IN MAIN EN 8-1155



Have the happiest house on the block, make repairs and alterations now

with a BANK of DELAWARE

LOAN

Up to 36 months to pay. Any one of our nine offices is the place to go to get the money you need for home improvements. Fast and easy, your loan at Bank of Delaware is planned to suit you. Your family is protected; low rates include life insurance on your loan up to \$7,500.

You Get	12 Payments	24 Payments	36 Payments
\$ 300	\$27.00	\$14.25	—
500	44.58	23.75	\$16.66
1000	88.33	46.66	32.77

Loans by phone. Many customers use this fast service. Consult directory for the telephone number of the Bank of Delaware office handy for you.

BANK of DELAWARE

Formerly Equitable Security Trust Company WILMINGTON, DELAWARE

10th & Market Street • Second & Union • Merchants Mart • DuPont Experimental Station Facility • Limited to Del. Residents • Newark • Dover • Extra Banking Hours on Fridays

NOW - AT NO EXTRA COST-INSURANCE TO PAY YOUR HEATING OIL BILLS!

Available to any family buying oil on Hollingsworth Insured Budget Plan. Should the insured (under 65) die, Hollingsworth cancels all remaining payments. The family gets heat for the rest of the season without charge. No medical exam. No extra cost. We make automatic deliveries of Atlantic's famous triple-refined heating oil. It's now made with a new additive that helps prevent the formation of sludge. You get even, steady heat.

- Enjoy insurance protection PLUS
- Convenience — 10 moderate, equal monthly payments.
- Freedom — from extra large midwinter heating bills.
- Economy — no interest, carrying charges or hidden costs.
- Value — You get Atlantic premium heating oil always at regular price.

HOLLINGSWORTH SUPPLY CO.

FUEL OIL — COAL — LUMBER BUILDING SUPPLIES — PAINT HARDWARE

65 N. College Ave. EN 8-8507

ATLANTIC HEATING OILS

Is your car a dinosaur to park?

Go Rambler

1st in sales gains—so easy to park, so economical!

Rambler sales are skyrocketing as thousands of motorists a week trade their hard-to-park dinosaurs for handy, thrifty Ramblers. See Rambler soon!

FREE "MORE MILEAGE FOR YOUR MONEY" 16-PAGE BOOKLET TELLS YOU HOW TO GET MORE MILES PER GALLON FROM ANY CAR. GET YOUR FREE COPY TODAY. SUPPLY LIMITED, SO HURRY!

DENNISON MOTOR CO., 19 Haines Street, Newark

Enrollment Of 109 Reported In Final Day Camp Period

Frank A. Mullen, Newark YMCA, reported today that 109 campers and counselors were enrolled for the third period Newark YMCA day camp, the largest registration in history.

Forty campers are in Unit I, children in the first two grades, with Marilyn Woodhouse as director of these smallest.

Sandra Flanagan is director of Unit II, composed of boys and girls in grades three and four.

Marcel Bernier will serve as head of Unit III, boys and girls from fifth grade up.

The staff plans an overnight sleep-out for the oldest unit next week. In addition, a "backwards" day and another special surprise event is on the docket for the campers. Counselors are preparing a dramatic parent guest day for the end of the season next Thursday, at 1:30 p.m.

The camp will be visited this Friday by representatives of the Delaware chapter of the American Camping Association. Last week the camp was evaluated by members of the metropolitan staff of the Wilmington and New Castle YMCA.

Commenting on the large attendance at the YMCA summer day camp, Mr. Mullen paid tribute to the camp leaders and Mrs. Arlene Mavromatis, YMCA office secretary, who handled office details and bookkeeping for the camp.

City Council

(Continued from Page 1)

Mr. Salovey announced that the State Highway Department had agreed to repave and maintain West Main Street from the Newark County Club to the B&O Railroad; West Delaware Avenue; and North Chapel Street to the B&O Railroad.

Council approved the payment of 129 vouchers from 91 vendors for total expenditures of \$68,730.77 during the month of June, and agreed to continue the agreement with the U. S. Geological Survey at an annual cost of \$500 for data from operation of the gauging station on White Clay Creek.

It was reported that Leon Weiner, president of Franklin Builders, is having his attorney draw up an agreement to implement installation of a sanitary sewer for Cherry Hills, Fairfield, Nottingham Green, and Sunray Farms, for review by City Solicitor John P. Sinclair.

Albert Aiken's request to close the alley behind his house on Haines Street, is to be advertised for a public hearing for the owners of abutting property.

Reconstruction of the Dallah Road stub was referred to the city solicitor for a review of the entire case. Paving costs were estimated by the city manager at \$11 per front foot, with possible assessment of concerned property owners.

While the expense of regading may be shared by Franklin Builders and the City of Newark.

Councilman Wilson urged that the developer and the city bear the entire expense without assessment of property owners in the Dallah Road area.

Mr. Wilson resigned as a member of the mayor's committee on housing because of conflicting interests, and the mayor's appointment of Elwood S. Roy in Wilson's stead was confirmed.

Council reaffirmed its decision to employ the Newark Real Estate Association as the city agent to proceed with acquisition of public parkland.

Coverdale urged that the city revert to the former method of re-

Elk Theatre

FRI., SAT. JULY 25, 26
DOUBLE FEATURE
FEATURE NO. 1

Country Music
Holiday
with
Ferlin Husky

Zsa Zsa Gabor
FEATURE NO. 2

Quantez
with
Fred MacMurray

Dorothy Malone
COLOR

SUN., MON., TUES.
JULY 27, 28, 29

The Young Lions
with
Marlon Brando

Hope Lange
Montgomery Clift
Dean Martin
COLOR

WED., THUR. JULY 30, 31

Merry Andrew
with
Danny Kaye, Pier Angeli
COLOR

FRI., SAT. AUG. 1, 2
DOUBLE FEATURE
Feature No. 1

The Cool and
The Crazy
with
Scott Marlowe

Gigi Perreau
FEATURE NO.—2

Drag Strip Riot
with
Yvonne Lime, Gary Clarke

How Your Congressional Representatives Voted Last Week On Nation's Business

Here's how members of the Delaware congressional delegation voted on official roll calls in the Senate and House last week.

Senate
Passed 80-0 a bill to reorganize the Defense Department, differing substantially from previous House-passed bill.

For—Williams (R), Frear (D)

House
Adopted 268-144 a rule making it in order to consider a bill curbing the Supreme Court's power to nullify state laws.

For—Haskell (R),
Adopted 249-147, an amendment specifying that no law already enacted by Congress should be construed as invalidating state anti-secession laws.

Against—Haskell.
Rejected 161-236 a motion to recommit (kill) the bill curbing Supreme Court's powers to nullify state laws.

Against—Haskell.
At Councilman Coverdale's prompting, the traffic hazard at South Chapel and Delaware Avenue is to be corrected with proper striping of the pavement as a stopping point on Chapel, north of Delaware Avenue.

The low bid of \$27,689 for 1958 street improvements and repairs was received from W. Southard Jones. Council is to award the contract after a two-week delay—following a conference with the city manager and the low bidder concerning details of the bid.

Love is blind; friendship tries not to notice.
—Otto Eduard Bismarck

Do as well as you can today, and tomorrow you may be able to do better.
—Newton

GREGG'S ESSO
MOTOR TUNE-UP
and
BRAKE SPECIALIST
EN 8-9925

Auctioneering
HAROLD S. HILL
Kemblesville, Pa.
Call Clinton 5-4310

ORDER 'NYLON' POOL COVERS NOW!!!
PHONE PORTER 4-4738 FOR FREE BROCHURE
Swimming Pool Supply
5000 WASHINGTON ST. Wilmington, Delaware

POLAROID CAMERAS
and Supplies
Take, develop and print your photo in less than a minute

NEWARK CAMERA SHOP
63 E. Main St., Newark EN 8-3500
Films - Cameras - Photo Supplies
FAST-QUALITY PHOTO-FINISHING-SERVICE
During July and August we will close Wednesdays at 1 and Saturdays at 3 p.m.

ANGIE'S SUB SHOP
Subs - Spaghetti - Pizza
Steaks
Homemade SPAGHETTI SAUCE by the quart or pint
ORDERS TO TAKE OUT
97 WILBUR ST., IN NEWARK
Call EN 8-2408 for Directions or For Orders

NEWARK'S HOUSING SITUATION IS BECOMING CRITICAL AGAIN.
Low-priced housing is almost impossible to find—apartments are being rented as soon as vacancies occur.

A few high priced homes are still available, but from the unusual amount of inquiries in the last two weeks and many renting, there will be a shortage by the first of August.

The word must have gotten around "THAT NEWARK IS THE MOST ATTRACTIVE CITY IN DELAWARE TO LIVE IN AND EDUCATE THEIR FAMILY."

If you have nice livable properties that you want occupied, give us a call. WE CAN HELP YOU.

HERE ARE SOME OF THE FINE BUYS THAT WE HAVE TODAY

UNUSUAL COUNTRY HOME WITH 8 ACRES
Six acres woods, with stream the entire length, spring-fed, on the Christina Creek.

Beautiful recently completed ranch home, Large L.R. with brick fire place, attractive D.R. 3 light airy bedrooms, tile bath, modern kitchen, plenty closets, oak floors.

Full-size high, dry club basement, oil heat, aluminum storm doors and windows, 2 car garage.

Lot fronts on OLD BALTIMORE PIKE 150 ft., beautifully landscaped with old shade trees galore, attractive shrubbery and flowers.

This is a fascinating and unusual property with many possibilities. You can only appreciate it by inspection.

Shown by appointment only. The price is also attractive—only \$17,000.00.

COUNTRY HOME
With 4½ acres level land, appx. 40 bearing fruit tree varieties, grape arbor, Beautifully landscaped grounds, with lots of shade, flowers and shrubbery, with big hedge fence on both side and back past dwelling.

Attractive Cape Cod dwelling with 3 bedrooms, large living room, large D.R., large roomy, attractive kitchen, bath, full-size, high, dry, cemented playground basement, two-car garage and other out buildings.

If you are interested in space, and a place to grow more vegetables than you can possibly use, have a cow and pony, you should look this attractive property over.

Between Christina and Bear, one of the nicest suburban areas in this part of Delaware.

The New Price is only \$17,000.00. Shown by appointment only.

SOUTH COLLEGE AVENUE
Large roomy house, remodeled from top to bottom. 1st floor, center hall entrance, parlor, large living room, dining room, modern new kitchen, new bath. 2nd floor, 3 large bedrooms, new bath. 3rd floor, 2 bedrooms, with fire escape. New cement floor in basement, new aluminum storm doors and windows. Beautiful lot 60x300 with many shade trees and shrubbery.

Exceptionally well priced \$17,500.

BROOKSIDE
Beautiful Miracle House, Brookside Boulevard—With many extras that should appeal to the Most Particular Housewife. One of the finest landscaped lawns with fine shrubbery and flowers in the area, close to shopping center, churches, schools and swimming pool. Many hundreds of dollars can be saved in interest and settlement costs by assuming low 4½% interest, long term mortgage.

If you want a beautiful Modern Home you should see this one. Shown by appointment only.

CAPITOL TRAIL
Valuable building lot—150x238 ft., water, sewer, gas, and electric available. Room for 2 homes. Newark side of bridge in Lumbrook. Only \$4500.

CHESTNUT HILL ESTATES—Carole Road
One of the most attractive Split Levels, with large corner Lot in the area, just like new with some extras.

Owner leaving City and is offering this fine home at an attractive price.

You can buy with reasonable amount of cash and assume long term 4½% interest mortgage. Quick possession. Shown by appointment only.

BROOKSIDE
Split Level, Matthews Road—Excellent condition—can be purchased with small amount of cash and subject to long-term 4½% mortgage. Malvern Drive—Same kind of home, same terms—Both in excellent neighborhoods. You save a lot of money under this plan.

BROOKSIDE
Split Level, Matthews Road—Excellent condition—can be purchased with small amount of cash and subject to long-term 4½% mortgage. Malvern Drive—Same kind of home, same terms—Both in excellent neighborhoods. You save a lot of money under this plan.

BROOKSIDE
Split Level, Matthews Road—Excellent condition—can be purchased with small amount of cash and subject to long-term 4½% mortgage. Malvern Drive—Same kind of home, same terms—Both in excellent neighborhoods. You save a lot of money under this plan.

BROOKSIDE
Split Level, Matthews Road—Excellent condition—can be purchased with small amount of cash and subject to long-term 4½% mortgage. Malvern Drive—Same kind of home, same terms—Both in excellent neighborhoods. You save a lot of money under this plan.

BROOKSIDE
Split Level, Matthews Road—Excellent condition—can be purchased with small amount of cash and subject to long-term 4½% mortgage. Malvern Drive—Same kind of home, same terms—Both in excellent neighborhoods. You save a lot of money under this plan.

BROOKSIDE
Split Level, Matthews Road—Excellent condition—can be purchased with small amount of cash and subject to long-term 4½% mortgage. Malvern Drive—Same kind of home, same terms—Both in excellent neighborhoods. You save a lot of money under this plan.

BROOKSIDE
Split Level, Matthews Road—Excellent condition—can be purchased with small amount of cash and subject to long-term 4½% mortgage. Malvern Drive—Same kind of home, same terms—Both in excellent neighborhoods. You save a lot of money under this plan.

BROOKSIDE
Split Level, Matthews Road—Excellent condition—can be purchased with small amount of cash and subject to long-term 4½% mortgage. Malvern Drive—Same kind of home, same terms—Both in excellent neighborhoods. You save a lot of money under this plan.

BROOKSIDE
Split Level, Matthews Road—Excellent condition—can be purchased with small amount of cash and subject to long-term 4½% mortgage. Malvern Drive—Same kind of home, same terms—Both in excellent neighborhoods. You save a lot of money under this plan.

BROOKSIDE
Split Level, Matthews Road—Excellent condition—can be purchased with small amount of cash and subject to long-term 4½% mortgage. Malvern Drive—Same kind of home, same terms—Both in excellent neighborhoods. You save a lot of money under this plan.

BROOKSIDE
Split Level, Matthews Road—Excellent condition—can be purchased with small amount of cash and subject to long-term 4½% mortgage. Malvern Drive—Same kind of home, same terms—Both in excellent neighborhoods. You save a lot of money under this plan.

BROOKSIDE
Split Level, Matthews Road—Excellent condition—can be purchased with small amount of cash and subject to long-term 4½% mortgage. Malvern Drive—Same kind of home, same terms—Both in excellent neighborhoods. You save a lot of money under this plan.

BROOKSIDE
Split Level, Matthews Road—Excellent condition—can be purchased with small amount of cash and subject to long-term 4½% mortgage. Malvern Drive—Same kind of home, same terms—Both in excellent neighborhoods. You save a lot of money under this plan.

BROOKSIDE
Split Level, Matthews Road—Excellent condition—can be purchased with small amount of cash and subject to long-term 4½% mortgage. Malvern Drive—Same kind of home, same terms—Both in excellent neighborhoods. You save a lot of money under this plan.

BROOKSIDE
Split Level, Matthews Road—Excellent condition—can be purchased with small amount of cash and subject to long-term 4½% mortgage. Malvern Drive—Same kind of home, same terms—Both in excellent neighborhoods. You save a lot of money under this plan.

BROOKSIDE
Split Level, Matthews Road—Excellent condition—can be purchased with small amount of cash and subject to long-term 4½% mortgage. Malvern Drive—Same kind of home, same terms—Both in excellent neighborhoods. You save a lot of money under this plan.

BROOKSIDE
Split Level, Matthews Road—Excellent condition—can be purchased with small amount of cash and subject to long-term 4½% mortgage. Malvern Drive—Same kind of home, same terms—Both in excellent neighborhoods. You save a lot of money under this plan.

BROOKSIDE
Split Level, Matthews Road—Excellent condition—can be purchased with small amount of cash and subject to long-term 4½% mortgage. Malvern Drive—Same kind of home, same terms—Both in excellent neighborhoods. You save a lot of money under this plan.

BROOKSIDE
Split Level, Matthews Road—Excellent condition—can be purchased with small amount of cash and subject to long-term 4½% mortgage. Malvern Drive—Same kind of home, same terms—Both in excellent neighborhoods. You save a lot of money under this plan.

BROOKSIDE
Split Level, Matthews Road—Excellent condition—can be purchased with small amount of cash and subject to long-term 4½% mortgage. Malvern Drive—Same kind of home, same terms—Both in excellent neighborhoods. You save a lot of money under this plan.

BROOKSIDE
Split Level, Matthews Road—Excellent condition—can be purchased with small amount of cash and subject to long-term 4½% mortgage. Malvern Drive—Same kind of home, same terms—Both in excellent neighborhoods. You save a lot of money under this plan.

BROOKSIDE
Split Level, Matthews Road—Excellent condition—can be purchased with small amount of cash and subject to long-term 4½% mortgage. Malvern Drive—Same kind of home, same terms—Both in excellent neighborhoods. You save a lot of money under this plan.

BROOKSIDE
Split Level, Matthews Road—Excellent condition—can be purchased with small amount of cash and subject to long-term 4½% mortgage. Malvern Drive—Same kind of home, same terms—Both in excellent neighborhoods. You save a lot of money under this plan.

BROOKSIDE
Split Level, Matthews Road—Excellent condition—can be purchased with small amount of cash and subject to long-term 4½% mortgage. Malvern Drive—Same kind of home, same terms—Both in excellent neighborhoods. You save a lot of money under this plan.

BROOKSIDE
Split Level, Matthews Road—Excellent condition—can be purchased with small amount of cash and subject to long-term 4½% mortgage. Malvern Drive—Same kind of home, same terms—Both in excellent neighborhoods. You save a lot of money under this plan.

BROOKSIDE
Split Level, Matthews Road—Excellent condition—can be purchased with small amount of cash and subject to long-term 4½% mortgage. Malvern Drive—Same kind of home, same terms—Both in excellent neighborhoods. You save a lot of money under this plan.

BROOKSIDE
Split Level, Matthews Road—Excellent condition—can be purchased with small amount of cash and subject to long-term 4½% mortgage. Malvern Drive—Same kind of home, same terms—Both in excellent neighborhoods. You save a lot of money under this plan.

BROOKSIDE
Split Level, Matthews Road—Excellent condition—can be purchased with small amount of cash and subject to long-term 4½% mortgage. Malvern Drive—Same kind of home, same terms—Both in excellent neighborhoods. You save a lot of money under this plan.

BROOKSIDE
Split Level, Matthews Road—Excellent condition—can be purchased with small amount of cash and subject to long-term 4½% mortgage. Malvern Drive—Same kind of home, same terms—Both in excellent neighborhoods. You save a lot of money under this plan.

BROOKSIDE
Split Level, Matthews Road—Excellent condition—can be purchased with small amount of cash and subject to long-term 4½% mortgage. Malvern Drive—Same kind of home, same terms—Both in excellent neighborhoods. You save a lot of money under this plan.

BROOKSIDE
Split Level, Matthews Road—Excellent condition—can be purchased with small amount of cash and subject to long-term 4½% mortgage. Malvern Drive—Same kind of home, same terms—Both in excellent neighborhoods. You save a lot of money under this plan.

BROOKSIDE
Split Level, Matthews Road—Excellent condition—can be purchased with small amount of cash and subject to long-term 4½% mortgage. Malvern Drive—Same kind of home, same terms—Both in excellent neighborhoods. You save a lot of money under this plan.

BROOKSIDE
Split Level, Matthews Road—Excellent condition—can be purchased with small amount of cash and subject to long-term 4½% mortgage. Malvern Drive—Same kind of home, same terms—Both in excellent neighborhoods. You save a lot of money under this plan.

BROOKSIDE
Split Level, Matthews Road—Excellent condition—can be purchased with small amount of cash and subject to long-term 4½% mortgage. Malvern Drive—Same kind of home, same terms—Both in excellent neighborhoods. You save a lot of money under this plan.

BROOKSIDE
Split Level, Matthews Road—Excellent condition—can be purchased with small amount of cash and subject to long-term 4½% mortgage. Malvern Drive—Same kind of home, same terms—Both in excellent neighborhoods. You save a lot of money under this plan.

BROOKSIDE
Split Level, Matthews Road—Excellent condition—can be purchased with small amount of cash and subject to long-term 4½% mortgage. Malvern Drive—Same kind of home, same terms—Both in excellent neighborhoods. You save a lot of money under this plan.

BROOKSIDE
Split Level, Matthews Road—Excellent condition—can be purchased with small amount of cash and subject to long-term 4½% mortgage. Malvern Drive—Same kind of home, same terms—Both in excellent neighborhoods. You save a lot of money under this plan.

BROOKSIDE
Split Level, Matthews Road—Excellent condition—can be purchased with small amount of cash and subject to long-term 4½% mortgage. Malvern Drive—Same kind of home, same terms—Both in excellent neighborhoods. You save a lot of money under this plan.

BROOKSIDE
Split Level, Matthews Road—Excellent condition—can be purchased with small amount of cash and subject to long-term 4½% mortgage. Malvern Drive—Same kind of home, same terms—Both in excellent neighborhoods. You save a lot of money under this plan.

BROOKSIDE
Split Level, Matthews Road—Excellent condition—can be purchased with small amount of cash and subject to long-term 4½% mortgage. Malvern Drive—Same kind of home, same terms—Both in excellent neighborhoods. You save a lot of money under this plan.

BROOKSIDE
Split Level, Matthews Road—Excellent condition—can be purchased with small amount of cash and subject to long-term 4½% mortgage. Malvern Drive—Same kind of home, same terms—Both in excellent neighborhoods. You save a lot of money under this plan.

BROOKSIDE
Split Level, Matthews Road—Excellent condition—can be purchased with small amount of cash and subject to long-term 4½% mortgage. Malvern Drive—Same kind of home, same terms—Both in excellent neighborhoods. You save a lot of money under this plan.

DELAPLANE MANOR
A very attractive location, with large corner lot, room for fine home in addition to the ritzy penthouse, with living room, stone fireplace, parka floors, tiled bath, dream efficiency kitchen, large bedrooms, oil heat, two-car garage.

Ideal for retired couple, or bachelor's quarters. No nicer built home in the area. A most attractive neighborhood. Shown by appointment only.

COUNTRY HOME
With 2 acres level ground, masonry dwelling, 2 bedrooms, living room with picture window, Maryland school bus. Roomy modern kitchen, bath, oil heat, aluminum storm door and windows. Approximately 2½ miles out of Newark. Only a few years old.

Good buy at \$9,000.00.

NORFOLK MANOR
Chestnut Hill, Newark's most attractive Suburban Home Sites—High elevation with Grand View. Good black-topped road. Newark School Bus. Lots 100x200 ft. \$20.00 per front foot. Restricted for your protection.

SOUTH CHAPEL STREET EXTENDED
Fine building lot 100x300 feet. This side of Cooches Bridge Road. \$12,000.00.

WRANGLE HILL ROAD
Beautiful wooded lot 100x350 feet. Good new homes on both sides. \$10,000.00.

HOME BUYERS
If you are paying as little as \$75.00 rent, you can better your living conditions by purchasing a fine home in Brookside, Chestnut Hill Estates, College Park or Binns Homes with small Cash Payment, and assume long term 4½% Mortgage.

Investigate before buying any place or paying high rent.

EAST PARK PLACE
Masonry Cape Cod, L.R.—D.R. Kitchen, 3 bedrooms, bath, large high dry cemented basement, all H.W. floors, plenty closets, attached garage, nicely landscaped grounds and in one of Newark's fine residential areas, close to university and schools. One of our best buys for only \$14,000.00.

BEAUTIFUL SUBURBAN BRICK HOME
With 5-bedrooms, 2 baths, fine living room with brick fireplace, dining room, new kitchen, knotty pine den, full basement, cemented. Large playroom, hobby shop, fruit cellar. Oil heat. On lot 80x110 ft. Grand view overlooking Newark. This is one of the best built homes around Newark, an ideal home for good size family. For quick sale you can buy this at a bargain, only \$26,500. Shown by appointment only.

BROOKSIDE
Miracle House—A Beauty on McCord Drive, 3 bedrooms, living room, dining area, dream kitchen. Tile Bath—Playroom Basement. Attached garage. Hardwood floors, stone patio in back. Aluminum storm doors and windows, in pink of condition. Close to school and shopping center, swimming pool and churches. Can be bought with small amount of cash, assuming long term, low interest rate mortgage. A real money saving opportunity. Possession at Settlement.

CONTINENTAL STREET
4 Bedrooms, L.R.—D.R., Kitchen, bath, garage, nice side yard, in excellent condition, a very attractive buy for a large family, or for people wanting to rent out rooms. Only \$7,500.00.

RENTALS
EAST MAIN STREET, Bungalow, 2 bedrooms, front porch, glass enclosed, living room with large stone fireplace, good-size dining room, new kitchen, full basement cemented, with laundry; lot beautifully landscaped with lots of shade trees and shrubbery. Close to A&P Store and Newark Shopping Center. Available about July 15th. \$100.00.

BIRCHWOOD PARK — New ranch home with 3 bedrooms, L.R.—D.R. Modern kitchen, gas heat, beautiful kitchen roomy with wall oven, range, Automatic washer, refrigerator. Lease to small family. \$95.00.

WEST DELAWARE AVE. — 1st floor apartment. 4 rooms and bath, garage. Heat and water furnished. Available June 1. Lease \$85.00.

COLLEGE PARK — Six rooms, bath, garage, excellent condition. Occupancy at once. \$90.00.

MALVINA LANE, Chestnut Hill Estates—Beautiful Modern Ranch. Excellent condition. Very desirable neighborhood. Lease \$100.00.

BEAUTIFUL BINNS HOME—4 bedrooms, 2 baths, H. W. Floors, Aluminum Storm Doors and Windows, Venetian Blinds. Available \$115.00.

If you cannot find what you want, call us and we will try to find it for you.

COME TO NEWARK AND BE HAPPY
SELLING IS OUR BUSINESS
LAWSON STARCHER
BROKER
267 E. Main Street
Phone Newark EN 8-6510

IF YOU ARE INTERESTED IN BUYING A HOME OR IN A LOT ON WHICH TO BUILD, IT WILL PAY YOU TO CALL US BEFORE BUYING.

IF YOU ARE INTERESTED IN BUYING A HOME OR IN A LOT ON WHICH TO BUILD, IT WILL PAY YOU TO CALL US BEFORE BUYING.

IF YOU ARE INTERESTED IN BUYING A HOME OR IN A LOT ON WHICH TO BUILD, IT WILL PAY YOU TO CALL US BEFORE BUYING.

IF YOU ARE INTERESTED IN BUYING A HOME OR IN A LOT ON WHICH TO BUILD, IT WILL PAY YOU TO CALL US BEFORE BUYING.

IF YOU ARE INTERESTED IN BUYING A HOME OR IN A LOT ON WHICH TO BUILD, IT WILL PAY YOU TO CALL US BEFORE BUYING.

IF YOU ARE INTERESTED IN BUYING A HOME OR IN A LOT ON WHICH TO BUILD, IT WILL PAY YOU TO CALL US BEFORE BUYING.

IF YOU ARE INTERESTED IN BUYING A HOME OR IN A LOT ON WHICH TO BUILD, IT WILL PAY YOU TO CALL US BEFORE BUYING.

IF YOU ARE INTERESTED IN BUYING A HOME OR IN A LOT ON WHICH TO BUILD, IT WILL PAY YOU TO CALL US BEFORE BUYING.

IF YOU ARE INTERESTED IN BUYING A HOME OR IN A LOT ON WHICH TO BUILD, IT WILL PAY YOU TO CALL US BEFORE BUYING.

IF YOU ARE INTERESTED IN BUYING A HOME OR IN A LOT ON WHICH TO BUILD, IT WILL PAY YOU TO CALL US BEFORE BUYING.

IF YOU ARE INTERESTED IN BUYING A HOME OR IN A LOT ON WHICH TO BUILD, IT WILL PAY YOU TO CALL US BEFORE BUYING.

IF YOU ARE INTERESTED IN BUYING A HOME OR IN A LOT ON WHICH TO BUILD, IT WILL PAY YOU TO CALL US BEFORE BUYING.

IF YOU ARE INTERESTED IN BUYING A HOME OR IN A LOT ON WHICH TO BUILD, IT WILL PAY YOU TO CALL US BEFORE BUYING.

IF YOU ARE INTERESTED IN BUYING A HOME OR IN A LOT ON WHICH TO BUILD, IT WILL PAY YOU TO CALL US BEFORE BUYING.