

The
Blue Hen

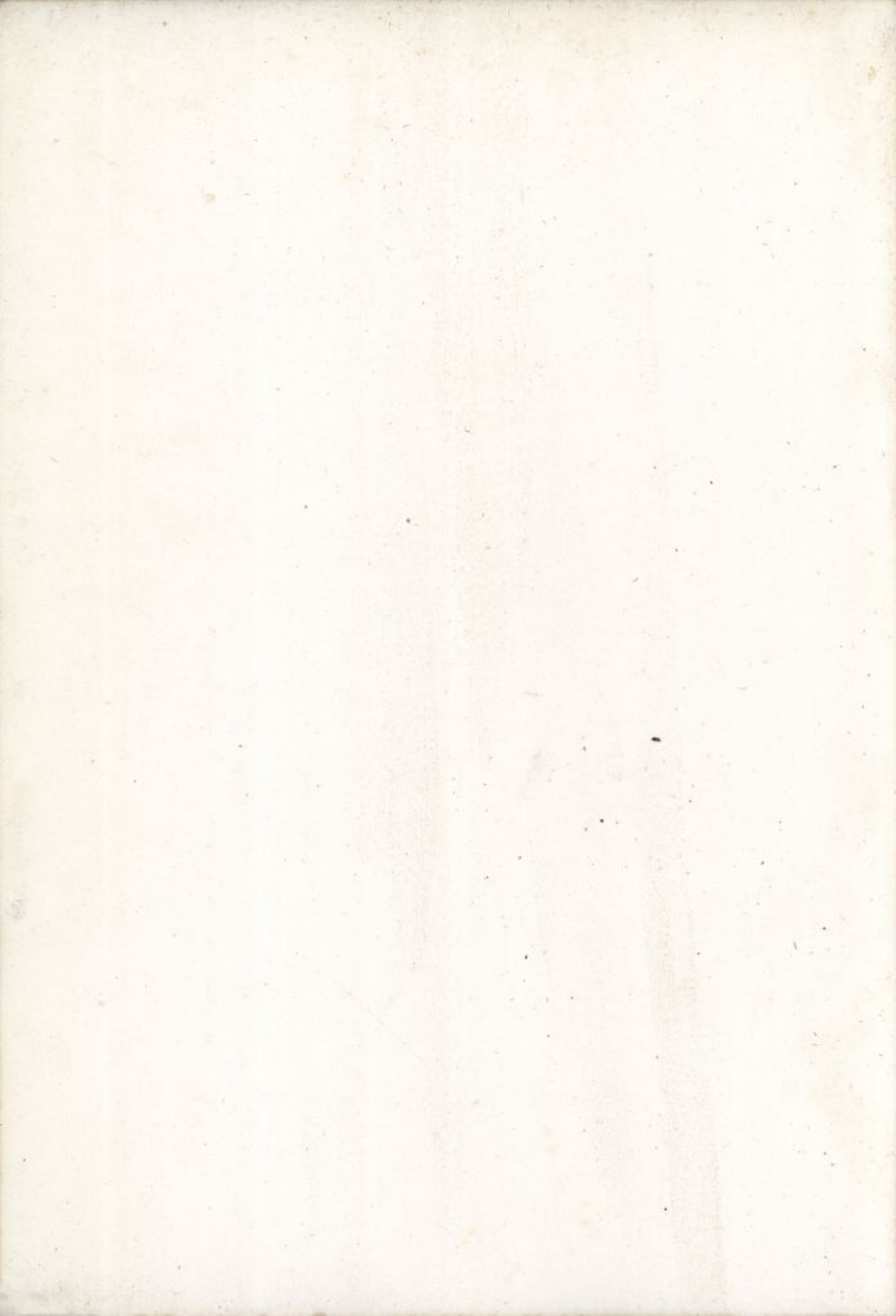


CLASSES OF
1922 - 1923
1924



W. H. Frederick





m

The Blue Hen

1922-1923

*Find here some food for thought
And some for contradiction
Some things a trifle overwrought
But much more truth than fiction*

Edited by the

Classes of 1923-1924

in

Delaware College, University of Delaware

DELAWARE COLLEGE
LIBRARY

Carlton Friend Miller, Ph. D.

*In memory of his scholarship, inspiring
character, and sacrifice for our
Alma Mater and her sons, this
book is dedicated.*



The Classes of 1923 and 1924



LD
1488
B58
1923





LD
1488
B58
1923



The 1922-1923 Blue Hen Board

Editor-in Chief

CARL T. WISE '23

Associate Editors

J. P. WINTRUP '23

J. H. SCHAEFER '24

C. W. REYNOLDS '23

Managing Editor

W. K. MENDENHALL '24

Advertising Editor

H. C. DRAPER '23

Circulation Manager

H. W. CLIFT '24

General Staff

M. A. Akin '24

H. R. Cole '23

V. S. Collins '26

H. F. Crawford '23

I. S. Elliott '24

N. R. Fletcher '23

F. K. Gradwohl '25

W. H. Grier '23

G. R. Herman '24

T. H. Pyle '23

C. A. Smith '24

F. D. Strickler '23

C. A. Tilghman '25

F. R. Warner '25

J. M. Wells '23

Art Editor

G. S. Robinson '23

19767



FOREWORD



We present this record of two years' activity at the University of Delaware with the hope that in after years it will keep alive in the hearts of the sons of Old Delaware the love of their Alma Mater and the memories of their undergraduate days.

The Editors

THE UNIVERSITY OF CHICAGO
LIBRARY

THE UNIVERSITY OF CHICAGO
LIBRARY

THE UNIVERSITY OF CHICAGO
LIBRARY

ALMA MATER

Come ye forth all ye sons to greet her
To your Alma Mater sing
Let our song rise to tell her glories
Let each voice with gladness ring
Of her fame let us ne'er tire singing
Let her victories be told
We can well be proud of dear old Delaware
So cheer the blue and gold.

CHORUS
Rah! Rah! Rah!

Hurrah! for Delaware

Rah! Rah! Rah!

With name and fame so fair

Hurrah! Rah! Rah!

May her glories never grow old

Boys let's cheer that name so dear

Hurrah for the blue and the gold

True her blue as the stars of heaven

Purity and worth her gold

They stand forth a banner emblematic

Truth and honor they unfold

Raise the flag to the starry heavens

All when they her folds behold

Off will come all hats and then as once again

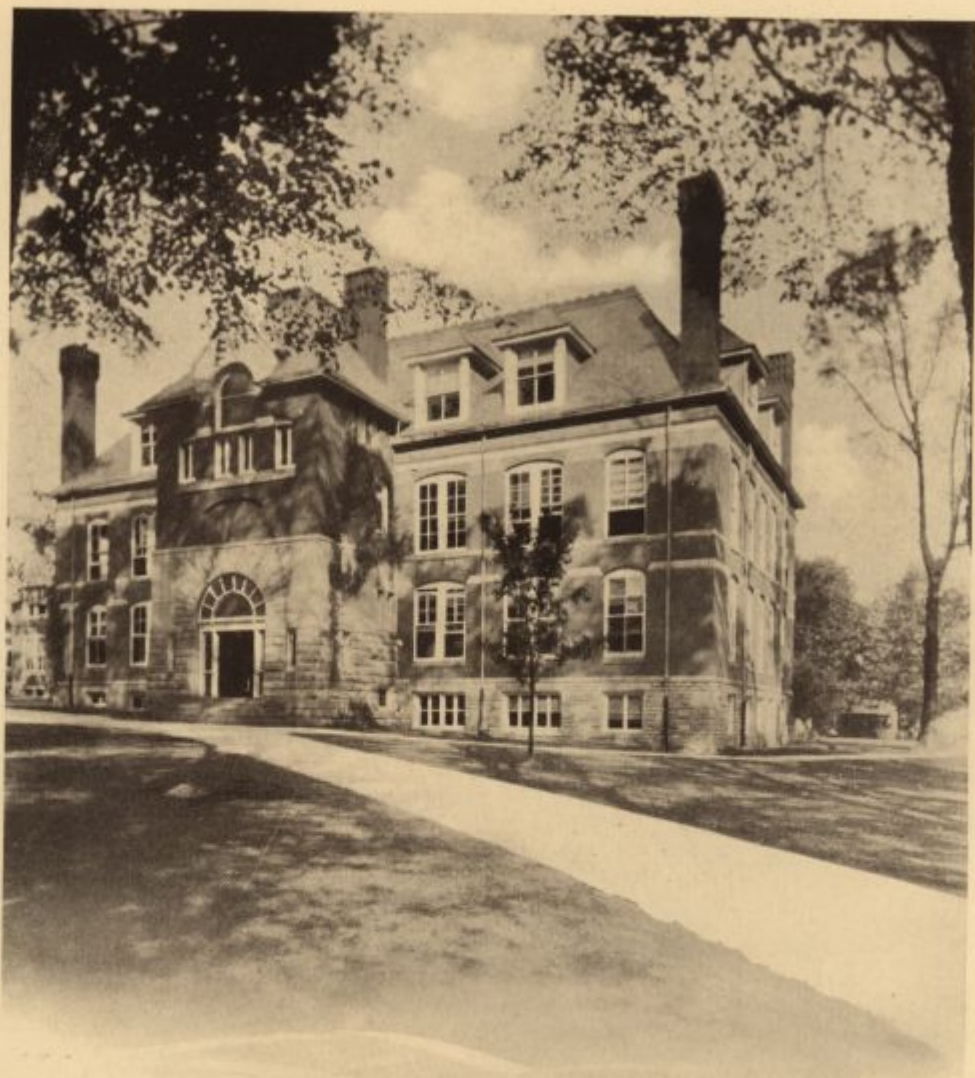
We'll cheer the blue and gold





Old College
(1834)

Great,
Warm-hearted,
And sublime —
Immortal Treasurer of Memories



Recitation Hall

(1892)

*Cold and callous,
With neither beauty nor illusions—
Emotionless Stoic of brick and stone*



Purnell Hall

Ivy-clothed aristocrat—

*A place of "sweetness and light"
Where many feeble-worded dreams
Are filed away, and many schemes
Die over-night*



Harter Hall
(1917)

*Thou good-natured wit,
Fond of practical jokes
And full of impractical ones—
O, Temple of Friendship!*



Wolf Hall
(1917)

*Majestic and apart;
Too much aloof to be well known,
Too young to have a soul*



Mechanical Hall
[1904]

Gymnasium
[1905]



Knoll

Infirmary
[1916]



Women's College Scenes

1922

BLUE LIEN

1923



FACULTY



The Faculty



Scholars and men—these they have
proven themselves and we count
their influence among the best of
our lives.



1922

BLUE LIEN

1923



WALTER HULLIHEN, PH. D.

President of the University of Delaware

DR. WALTER HULLIHEN is a native of Virginia and received his preparatory education at Staunton Military Academy. In 1896 he was graduated from the University of Virginia with the degree of M. A. He took post-graduate work at that university, 1896-97, and at Johns Hopkins University, 1897-1900, where the degree of Ph. D., was conferred on him. At Johns Hopkins he was University Fellow, 1899-1900, and Fellow by Courtesy, 1900-02. After several years of college work Dr. Hullihen went abroad, 1907-1908, and studied at the Universities of Leipzig, Munich, and Rome. From 1909 to 1920 he was Professor of Greek at the University of the South. He was also Dean of the College of Arts and Science from 1912 to 1920. In the fall of 1920 he came to Delaware.

During the late war Dr. Hullihen served as major in the United States Army. He is an ardent sportsman and for several years was on the executive committee of the National Collegiate Athletic Association.

Dr. Hullihen is a member of the American Philological Association and of the Delta Phi and Phi Beta Kappa Fraternities.



EDWARD LAWRENCE SMITH

Dean of the University of Delaware

"Forgotten! Tho' a thousand years should pass
Methinks our air will throb with memory's thrills,
A conscious grief weigh down the faltering grass,
A pathos shroud the hills,
Waves roll lamenting, autumn sunsets yearn
For the old time's return!"

BUT IT can never return. It has gone, gone in the death of Edward Lawrence Smith, he who for so long gave his life to us, even gave the dying embers of it to help kindle our fires. No one of us ever called upon him, no one of us ever sought his advice that he did not respond kindly and intelligently. And for us, as a group, he gave his life.

Is there man who would devote more of a life and all that it contained to Alma Mater? Is there man who would wait upon Alma Mater, in happiness, in sadness, in health, or in illness? Is there man who would forsake the beautiful and easy road to glory for an exacting and difficult road? We know not now, for the one we knew who could do all this has left us. We are filled with remorse because we loved him and his ideals. Ever shall we cherish the memory of him and his standards. He welcomed us to our Alma Mater. May his spirit sponsor us as we slip into life's waters.

1922 BLUE LIEN 1923

CHARLES ANDREW McCUE

Dean of the Agricultural College

DEAN CHARLES ANDREW McCUE was graduated, in 1901, from Michigan Agricultural College with the degree of S. B. After teaching at that college from 1903 to 1907 he resigned and came to Delaware College as Professor of Horticulture. In 1919 he became Dean of the Agricultural College and Director of the Agricultural Experiment Station.

Dean McCue was president of the American Society for Horticultural Science in 1918. He is also a member of the American Association for the Advancement of Science, the American Pomological Society, the American Genetic Association, and of the Phi Kappa Phi Fraternity.



MERRILL VAN GIESEN SMITH

Dean of the Engineering College

DEAN MERRILL VAN GIESEN SMITH was graduated in 1896 from Stevens Institute of Technology with the degree of M. E. In 1902 he was called from his position as Instructor in Mechanical Engineering at the University of Pennsylvania, to fill temporarily the position of Professor of Mechanical Engineering at Delaware College. In 1904 he became head of the Department of Mechanical Engineering. He became Dean of the Engineering College in 1922.

Dean Smith is a member of the Phi Kappa Phi Fraternity.





GEORGE ABRAM HARTER
Grand Astronomical Highbrow

Professor of Mathematics and Physics
B. A., St. John's College, 1878;
Ph. D., St. John's College, 1893;
Sigma Nu and Phi Kappa Phi Fra-
ternities.

ELISHA CONOVER
Eminent Classicist

Professor of Ancient Languages and
Literatures. A. B. Dickinson Col-
lege, 1884; M. A., Dickinson Col-
lege, 1887; Kappa Phi and Phi
Kappa Phi Fraternities.

CLINTON OSBORNE HOUGHTON
Classifies Ossified Humanity

Professor of Biology. A. B., Cornell
University, 1902; Gamma Alpha,
Sigma Xi, and Phi Kappa Phi Fra-
ternities.

WILBUR OWEN SYPHERD
rites On Scriptures

Professor of English. B. A., Dela-
ware College, 1896; B. S., Univers-
ity of Pennsylvania, 1900; M. A.,
Harvard University, 1901; Ph. D.,
Harvard University, 1906. Sigma
Phi Epsilon and Phi Kappa Phi
Fraternities.

CHARLES LYNDELL PENNY
Chemistry's Loudest Proclaimer

Professor of Chemistry. A. B., Buck-
nell University, 1879; A. M., Buck-
nell University, 1882; Sc. D., Buck-
nell University, 1898; Phi Kappa
Phi Fraternity.

THOMAS FRANKLIN MANNS
rains Faculty Moleskinners

Professor of Plant Pathology and Soil
Bacteriology. M. S., North Dakota
Agricultural College, 1901; Ph. D.,
University of Pennsylvania, 1913;
Sigma Xi and Phi Kappa Phi Fra-
ternities.



CHARLES CONGER PALMER
Clean Cut Personality

Professor of Bacteriology and Hygiene. D. V. M., Ohio State University, 1912; M. S., University of Minnesota, 1915; Sigma Phi Epsilon, Phi Kappa Phi, and Alpha Psi (Medical) Fraternities.



GEORGE ELLIOTT DUTTON
Grand Entrance Dictator

Professor of English. B. A., Delaware College, 1904; M. A., Harvard University, 1911; Kappa Alpha and Phi Kappa Phi Fraternities.



WILLIAM ALBERT WILKINSON
Will Always Whisper

Professor of Psychology and Education. B. S., University of Missouri, 1910; A. M., University of Missouri, 1911; Phi Delta Kappa and Phi Kappa Phi Fraternities.



RAYMOND WALTER HEIM
Resolute, Wise, Handsome

Professor of Vocational Agricultural Education. S. B., Pennsylvania State College, 1913; A. M., Columbia University, 1920; Phi Beta Kappa Fraternity.



GUY ERWIN HANCOCK
Give Him Hell

Professor of Physics. B. S. in E. E. Iowa State University, 1914; S. M. in E. E., University of Nebraska, 1916.



HOWARD KENT PRESTON
How Kickers Perish

Professor of Mathematics and Engineering. C. E., Lafayette College, 1909.



ROBERT W. THOROUGHGOOD
 ighteous, W ise, T houghtful

Professor of Civil Engineering. C. E.,
 Lehigh University, 1902.



THOMAS A. ALEXANDER BAKER
 ames A ngr y Bulls.

Professor of Animal Husbandry.
 S. B., Cornell University, 1914;
 Alpha Zeta and Gamma Alpha Fra-
 ternities.



GEORGE L. SCHUSTER
 ood L ime S urveyor

Professor of Agronomy. B. S., Ohio
 State University, 1916; M. S., Ohio
 State University, 1918.



GEORGE A. KOERBER
 rcatest A merican K ilowatt

Professor of Electrical Engineering.
 E. E., Lafayette College, 1908; Sig-
 ma Nu and Phi Beta Kappa Fra-
 ternities.



LATHE BURTON ROW
 ost B atallion R eclaimer

Professor of Military Science and
 Tactics, West Point, 1913; Major of
 Infantry, United States Army.



RALPH H. HARRIS
 enowned H ustler

Professor of Business Administration.
 B. S., University of Pennsylvania,
 1914; A. M., University of Chicago,
 1922; Gamma Delta Rho Fraternity.

WILSON LLOYD BEVAN
itty, Likeable, Boyish

Professor of European History. M. A.,
Columbia University, 1889; Ph. D.,
University of Munich, 1893; Alpha
Tau Omega Fraternity.

EZRA BRECKENRIDGE CROOKS
very Body Gram

Professor of Philosophy and Social
Science. A. B., Central College,
1899; M. A., Vanderbilt University,
1901; Ph. D., Harvard University,
1910; Sigma Alpha Epsilon Fra-
ternity.

ALBERT SHERMAN EASTMAN
always Searching Elements

Professor of Chemistry. B. S., Uni-
versity of Vermont, 1905; M. S.,
University of Vermont, 1911;
Ph. D., Princeton University, 1916;
Delta Sigma Fraternity.

GEORGE HERBERT RYDEN
rand Historical Regent

Professor of History and Political
Science. A. B., Augustana College,
1909; A. M., Yale University, 1911.

RAYMOND MELVILLE UPTON
romantic Modesty Untainted

Director of Division of Rehabilitation.
S. B., Massachusetts Agricultural
College, 1915; M. S., University of
Delaware, 1922; Kappa Epsilon
Fraternity.

LOUIS REINHOLD DETJEN
Loves Research Details

Associate Professor of Horticulture.
S. B., Wisconsin University, 1909;
S. M. North Carolina State College,
1911; Alpha Zeta Fraternity.





HAROLD **E**DWARD **T**IFFANY
is Exclamations Tickle

Associate Professor of Chemistry.
B. S., Bucknell University, 1905;
M. S., Harvard University, 1906;
Sigma Phi Epsilon Fraternity and
Masonic Fraternity of Harvard.

FINLEY **M**ELVILLE
ollows Many

KENDALL **F**OSTER
ingly Ancies

Associate Professor of English. B. A.,
New York University, 1913; M. A.,
New York University, 1914; Ph. D.,
Columbia University, 1918; Omega
Alpha and Phi Beta Kappa Fra-
ternities.

ROY **S**PARKS
egular Soldier

Assistant Professor of Military Sci-
ence and Tactics. Captain of In-
fantry, United States Army.

WILLIAM **J**AMES **M**CAVOY
orker, udge, Man

Director of Athletics. C. E., Lafay-
ette College, 1908; Phi Delta Theta
Fraternity.

REINHOLD **E**UGEN **S**ALESKI
eads Even Sanskrit

Assistant Professor Modern Lan-
guages. A. B., Harvard University,
1911; A. M., Harvard University,
1917.

GEORGE **E**LDER **B**RINTON
reatly Elongated Boy

Assistant Professor of Modern Lan-
guages. Ph. B., Franklin and Mar-
shall College, 1913.

RAYMOND WATSON KIRKBRIDE
reckless ith knowledge

Assistant Professor of Modern Languages. S. B. Westminster College, 1916.

THOMAS DARMORE SMITH
eaches Deep stuff

Assistant Professor of Mathematics and Engineering. B. S. in C. E., Rutgers College, 1913.

CARL JOHN REES
Constantly Juggling Ratios

Assistant Professor of Mathematics. A. B., Franklin and Marshall College, 1918.

CHARLES RAYMOND RUNK
Crops Raised Right

Assistant Professor of Astronomy. S. B., Ohio State University, 1919; Delta Theta Sigma Fraternity.

CARL SIEB RANKIN
Chief Social Regulator

Assistant Professor of Engineering and Mathematics. C. E., Lafayette College, 1911; B. S., Columbia University, 1912; Sigma Alpha Epsilon and Phi Beta Kappa Fraternities.

LEO BLUMBERG
Lectures Bore

Assistant Professor of Engineering. E. E., University of Delaware, 1919; Phi Kappa Phi Fraternity.





ISADORE **L**EVINE
Illustrious L_{inguist}

Instructor in Modern Languages.
A. B., Pittsburgh University, 1921;
A. M., University of Pittsburgh,
1921.

JOHN **L**INTON **C**OYLE
Jolly L_{ittle} C_{raftsman}

Instructor in Shop Work.

WILLIAM **F**RANCIS **L**INDELL
ins air L_{adies}

Instructor in Engineering. B. S., in
E. E., University of Delaware, 1920.

JOY **H**AROLD **C**LARK
Juvenile H_{orticultural} C_{hamp}

Instructor in Horticulture. S. B., Pur-
due University, 1921; Alpha Zeta
Fraternity.

ARTHUR **E**DWARD **T**OMHAVE
Animals E_{asily} T_{rained}

Instructor in Animal Husbandry.
S. B., Pennsylvania State College,
1921; Alpha Zeta Fraternity.

ALEXANDER **B**LAIR
Aesthetic B_{achelor}

Instructor in English and History.
A. B., Delaware College, 1919;
Omega Alpha and Phi Kappa Phi
Fraternities.

ALDEN **W**ADSWORTH **G**RAVES
ssociated ith enii

Instructor in English. A. B. University of Pennsylvania, 1922.

HENRY **R**AYMOND **B**AKER
e aises acteria

Instructor in Biology. B. S., Massachusetts Agricultural College; Kappa Gamma Phi Fraternity.



ARTHUR G. WILKINSON

Business-Administrator



A FEW



Altho I know of Cleere,
The wonder of an age,
When Fenny mixes glyceero
He is to me a sage.

He surely throws that stuff about
And never breaks a tube-
He knows more than that Roman scout,
Who next to him 'as ruhe.

When apparatus he sets up,
He makes Goldberg look sick-
With bottle thick and porcelain cup,
He'll never miss a trick.

From prizes old to prizes new,
The very best he'll oop.
For hours he can talk to you
With never half a stop.

Such wisdom from a hidden source
He hurle upon us here.
I think that I shall drop his course
Or seek my peaceful bier.



UNOFFICAL POSES

The Trustees of the University of Delaware

Ex-Officio

The Governor, WILLIAM D. DENNEY, Dover

The President of the State Board of Education,
T. R. BROWN, Wyoming

The Master of the State Grange, JACOB H. ROSA, Milford

The President of the University, WALTER HULLIHEN

H. G. M. Kollock, M. D., Newark.....	1882
J. Harvey Whiteman, Esq., Wilmington.....	1892
Charles B. Evans, Esq., Newark.....	1894
William T. Lynam, Esq., Wilmington.....	1897
Charles S. Conwell, Camden.....	1897
*Daniel W. Corbit, Odessa.....	1899
L. Heisler Ball, M. D., Marshallton.....	1900
W. Watson Harrington, Esq., Dover.....	1900
Samuel H. Messick, Bridgeville.....	1902
James E. Dutton, Seaford.....	1904
John Briggs, Esq., Wilmington.....	1905
Samuel H. Derby, Woodside.....	1905
Thomas Davis, Esq., Wilmington.....	1908
Samuel J. Wright, Newark.....	1910
Henry Ridgeley, Esq., Dover.....	1911
Charles M. Curtis, Esq., Wilmington.....	1911
Everett C. Johnson, Wilmington.....	1911
Henry B. Thompson, Greenville.....	1912
Eben B. Frazer, Newark.....	1913
H. Rodney Sharp, Wilmington.....	1915
W. H. Heald, Esq., Wilmington.....	1915
Edward A. Evans, Cheswold.....	1916
Charles R. Miller, Wilmington.....	1917
H. F. du Pont, Winterthur.....	1918
Harry Cannon, Bridgeville.....	1918
Henry P. Scott, Delaware City.....	1920
Warren C. Newton, Bridgeville.....	1922
Frank L. Grier, D. D. S., Milford.....	1922

*Deceased, September 1922.