

**MISSING
PAGE(S)**

LIFESTYLE

October 5, 1989

Post Newspapers

1b

Players: A sterling Showcase

**Chapel Street
opens '89 season
with one-acts**

by Nancy Turner

Of the Post staff

The Chapel Street Players opened their 1989-1990 theatre season with a one-act showcase featuring a delightful blend of new and veteran stage talent.

The purpose of the one-act showcase is to give novice performers the learning opportunity to work with experienced thespians. But actually, everyone benefits. Chapel Street gets "new blood," young actors gain confidence, old stars learn new tricks, "stage families" and friendships are created, and the audience gets a good show.

The first two of the one-act plays, "Yes, Dear" and "The Prettiest Girl in Lafayette County," were directed by Don Pruden, immediate past president of CSP. Although they were entirely separate plays, with different authors, both offer very real glimpses into couple relationships.

"Yes, Dear," by Warren Graves, is about the conversation on growing older that takes place between a husband and wife on the eve of their daughter's 21st birthday. The "real" life team of Phil and Mary Ann Dowd, appear as the parents of birthday girl Dee, played by Jacqueline Mento.

In this very likely slice of life, full of Phil Dowd's romp and jest, the mature couple reveals that they can cheerfully accept the years without yielding to them.

"The Prettiest Girl in Lafayette County," by Jason Milligan, spotlights the well-matched team of Ken O'Neal and Wendy Parker as they portray the initial moments of young romance. O'Neal is convincing as the cocky softball star turned sparker who "cleaned himself up for the occasion." And Parker is perfect, as the card store clerk and object of his affections who needs more than a half-price Valentine in exchange for a kiss.

A big welcome goes to Scott F. Mason who makes his Chapel Street directing debut with the one act production of "Ah, Sweet Mystery," by John Kirkpatrick.

A University of Delaware graduate student, Scott has written several plays, "Breakfast, Lunch and Dinner," "Get Off My Case," and "Act of Murder," with the later winning runner-up in the 1989 Delaware Theatre Association's one-act play competition.



Phil and Mary Ann Dowd and Jackie Mento in "Yes, Dear" from the Chapel Street Players' Showcase.

"Ah, Sweet Mystery" is staged in a unique black and white living room setting and has a slightly abstract comic suspense plot that is guaranteed to please. More impressive is the cast, some of the best talent that Chapel Street Theatre has to offer. Remarkable veterans like Renee O'Leary and Bob Jones, who never miss a line or an opportunity to get a laugh, are joined by Ellie Geaghan, who won both state and regional

awards for Best Actress last spring in the Delaware Theatre Association's one-act play festival.

Barry Dubin, a CSP newcomer, tumbles about the small CSP stage as if he has spent his life there in his portrayal of Cyrus Jones. He is well complemented by Enid Meyer, a U.D. student who made an outstanding Chapel Street debut last year in "Double Exposure" and appears here as lovely Kate, who has

"never been quite normal" because she hates mystery stories.

Enjoyable performances were also provided by Jo Bundy as Martha the cook, CSP newcomer Rob Christian as Dr. Gildarsleaves, and Renee Schumann as Rose the nurse.

The one-act showcase will continue Oct. 6 and 7. Curtain time is 8:15 p.m. Reserved tickets are available by calling 368-2248.



HOMEFRONT
Dorothy Hall

**Empty trays:
Ice going
to get even**

The following tale, supposedly true, is making the rounds. A number of years ago a man shot his wife in front of a room full of witnesses. Even though he freely admitted his actions, he was found innocent. The judge based his decision on the fact that the incident took place during a world-class bridge tournament and the unfortunately foolish woman had made the unforgivable error of trumping her husband/partner's ace.

I'm told that this decision has dramatically changed the attitude of most of the inattentive bridge players. They have stopped slouching and gossiping; instead, they are now paying close attention to the game.

While this tale may be an Urban Legend, it nonetheless highlights how actions which seem insignificant to outsiders can send a frustrated insider screaming incoherent imprecations into the next county.

How do you suppose that judge might respond when I explain why I committed moderate mutilation on one of my children because, for the 87,458th time, he put an empty ice tray in the freezer. His habit is only slightly less diabolical than his older brother's ice cube habit — he always leaves a single ice cube in each of the six trays.

Other times I wonder what the judge would do to me if I had a temper tantrum at the Acme and stomped seven times on an egg carton filled with extra large, brown eggs which belonged to a sweet-faced, blue-haired grandmother. With that destruction completed, I would proceed to smash her box of coconut macaroons into itty-bitty, teeny weeny pieces. My excuse would be that I was in the Cash Only-10-Item-Express Lane and she had 34 items not counting the now-useless 12 eggs and 48 macaroons. Besides she was scrabbling at the bottom of her purse for coupons and wanted to write a check, on an out of town bank, once she finally found a pen that worked.

How would a judge react to a plea of temporary insanity after I tried to drill for oil in the skull of a teenager who'd left me, for the 38th time, with a teaspoon of gas in the car.

I hope that a male judge wouldn't be too lenient on my husband after he blew his stack just because there wasn't a single pair of matching, hole-free socks in his drawer.

Do you suppose a judge would look kindly on me after I sewed the lips closed on the salesman at the appliance store who referred to me with a smarmy smile and a knowing wink in front of my husband as "the little woman."

I wouldn't be surprised to find that the appliance salesman is the cousin of the computer salesman who took one look at me and commented that I would, no doubt, have trouble using a computer since my age showed that I was clearly pre-computer, and probably pre-abacus as well.

That salesman's niece was the stewardess on the flight I took to Colorado. I was traveling without spouse and with

DAM features work by Newarkers

Biennial '89 opens tomorrow

The Delaware Art Museum's Biennial '89 exhibition will open tomorrow and continue through Nov. 26.

Biennial '89 is a juried exhibition of works by regional artists.

Featured are 84 original works in a variety of media, including painting, sculpture, photography, fiber, wood, metal and paper.

Juror for the exhibition was John Perreault, an art critic who writes regularly for the Village Voice.

Perreault studied 1,680 slides from nearly 500 artists and said "the entries were excellent and the choice were unusually difficult."

Newark artists included in the ex-

hibition are Paula Camenzind with a glazed porcelain entitled "Garden Stone," Mary Beth Campion with painted pieced cottons, silk, rayon and linen entitled "Mt. Larkspur Evening Coat," Iran Lawrence with a wall quilt entitled "O'Keaf I," and Patricia Anne Moshanko with pastel on paper entitled "B's Delight."

Also included is "I Found My Train of Thought," found objects by Mitch Lyons of New London, Pa.

The Delaware Art Museum is located at 2301 Kentmere Parkway, Wilmington. Hours are 10 a.m. to 9 p.m. Tuesdays, 10 a.m. to 5 p.m. Wednesdays through Saturdays, and noon to 5 p.m. Sundays. It is closed Mondays.



"Aquila" by Jim Ippolito of Lewes (left) and "Neckpiece" by Betty Helen Longhi of Seaford are among works in Biennial '89.



See ICE/4b

Freud: 'Tell me about your civilization'

The current exhibition at the University of Pennsylvania Museum commemorates the 50th anniversary of the death of Sigmund Freud. It will be open through Oct. 15, then it will begin a 12-city American tour.

"The Sigmund Freud Antiquities: Fragments from a Buried Past" is the title of the exhibit of materials from Freud's private collection of ancient art. You may see 65 selections from his vast collection including Egyptian, Greek, Roman and Asian antiquities. There are also books, manuscripts and rare photographs from Freud's archaeological collection.

The entire show is great, but I would suggest you don't miss a bronze statue of Athena particularly prized by Freud, a Greek vase depicting Oedipus and the Sphinx and a Greek terracotta of Eros, god of love.

For true Freud followers, "must see" items include a two-headed bronze depicting a satyr and his female counterpart, a maenad, symbols of impulse and sexuality and an Egyptian statue of Imhotep, a scribe, architect and physician



THE ARTS

Phil Toman

associated with the interpretation of dreams.

This is a rare opportunity to see all of these items usually housed in London and Vienna.

According to Pam Kosty of the University Museum, the entire Freud collection contains some 2,000 items untouched since his death. Pam told me that the exhibition now in Philadelphia is designed to demonstrate how Freud's views on the history and civilization and the development of human psyche were deeply rooted in his archaeological knowledge.

I also learned that archaeology provided Freud with a favorite metaphor in the procedures of psychoanalysis. In 1937, when he described how a psychoanalyst uncovers his patient's childhood memories, he wrote, "The analyst's work of

construction, or if it is preferred, of reconstruction, resembles to a great extent an archaeologist's excavation of some dwelling place that has been destroyed and buried."

A well illustrated book, "Sigmund Freud and Art: His Personal Collection of Antiquities," has been published for the exhibition by Richard Wells of the Freud Museum and Lynn Gamwell of the State University of New York at Binghamton. You may get a copy when you visit the University Museum.

This is the same museum so many of us visited as children to see the world famous Egyptian exhibit. Well, it's still there and has grown a great deal. It is a great place for a family visit because there is so much for every age level to enjoy. If you and your family have not yet made the journey, this could be a great time, before winter sets in.

The University Museum is located at 33rd and Spruce streets. It is an easy trip up I-95 to I-76. Get off at the Civic Center exit and follow the signs to the Civic Center. Drive past the Civic Center to the next corner and the museum is on your right. There is indoor or on street parking available near the museum.

Museum hours are Tuesday through Saturday 10 a.m. to 4:30 p.m. and Sunday 1 to 5 p.m. Admission is \$3 for adults and \$1.50 for students and senior citizens.



Photographs of Sigmund Freud and his study, including the now-famous couch, are but a small part of the collection of archaeological treasures now on view at the University of Pennsylvania Museum.

Empire strikes back

"Brits on Broadway," a musical revue which salutes British contributions to New York theater, will open Friday night, Oct. 6 in Newark.

The Bacchus Players production, alternately billed "The Empire Strikes Back," will be housed in the University of Delaware's Bacchus Theatre, located in Perkins Student Center on Academy

Street.

Curtain is 8:15 p.m. Fridays and Saturdays, Oct. 6-7 and 13-14, and tickets cost \$6, \$3 for University students. Call 451-2631 for reservations.

"Brits on Broadway," by Joyce Hill Stoner and William J. Brooke, features music from "The Beggar's Opera," "Oh, What a Lovely War," "Oliver," "Cats" and "Phantom of the Opera."



German-American Day

October 6, 1989

On this very special day the 800 members of the Delaware Saengerbund salute the achievements of German-Americans in Delaware before and after our club was founded in 1853.

We are very grateful for the many courtesies extended to us by the Embassy of the Federal Republic of Germany during the past year.

Our club shall continue to share the best of German culture with this community and was pleased to greet so many of you at our recent Oktoberfest.

God Bless America!

Delaware Saengerbund

49 Salem Church Road, Newark, Delaware 19713

"Celebrating our 136th Year"



ARTS & ENTERTAINMENT CALENDAR

THEATRE

□ **"Where's Charley,"** through Oct. 22, Three Little Bakers Dinner Theatre, 3540 Foxcroft Dr., Pike Creek, \$16.95-\$23.95, Call 368-1616.

□ **"A Funny Thing Happened On the Way to the Forum,"** Thursdays through Sundays, Candlelight Music Dinner Theatre, 2208 Miller Rd., Ardentown, \$18.50-\$22, Call 475-2313.

□ **"The Gazebo,"** through Sept. 30, Wilmington Drama League, Lea Boulevard and Shipley Street, Wilmington. For ticket information, call 655-4982.

□ **"Chapel Street Players' One-Act Showcase,"** 8:15 p.m. Oct. 6-7, Chapel Street Theatre, 27 N. Chapel St., Newark, \$7, \$6 for senior citizens. Call 368-2248.

□ **"Brits on Broadway,"** the Bacchus Players production featuring songs from such musicals as "Oh, What a Lovely War," "Cats" and "Phantom of the Opera," 8:15 p.m. Oct. 6, 7, 13 and 14, Bacchus Theatre, University of Delaware's Perkins Student Center, Academy Street. \$6, \$3 for University students. Call 451-2631.

□ **Chinese Gold Acrobats and Magicians of Taipei,** 2 p.m. Sunday, Oct. 8, Wilmington High School, sponsored by Performing Arts for Children of Delaware, \$3.50 in advance, \$5 at the door. Call 654-1555.

□ **"Side By Side By Sondheim,"** 8 p.m. Oct. 13, 14, 20, 21, Delaware Children's Theatre, 1014 Delaware Ave., Wilmington. The musical revue will feature such songs as "Comedy Tonight," "Send In the Clowns," "Company," "Tonight" and "America." \$12. Call 655-1014.

□ **"The King and I"** starring Rudolf Nureyev, Oct. 17-29, The Playhouse, DuPont Building, Wilmington. Call 656-4401.

MUSIC

□ **Newark Symphony Chamber Orchestra,** 7:30 p.m. Saturday, Oct. 7, Memorial Hall of First Presbyterian Church, 292 W. Main St. The concert will open with Beethoven's Praeludium and Fuge in F, following by Mozart's Horn Concerto No. 3 in E flat, K. 447, and Mendelssohn's Symphony No. 4 in A, Opus 90. Admission is free. Goodwill donations are welcomed.

□ **"American History Through Opera,"** lecture-performance, 7:30 p.m. Saturday, Oct. 7, Ross Mansion, Seaford. Sponsored by OperaDelaware. Dr. Gordon Myers of Trenton State College will speak. Pianist Jeffery Miller will accompany singers Evelyn Swenson and Alan Wagner.

□ **Scottish folk singer Iain MacKintosh,** 8 p.m. Saturday, Oct. 7, Immanuel Episcopal Church Parish Hall, 17th Street and Riverview Avenue, Wilmington. Tickets cost \$7 in advance, \$8 at the door. Children younger than 12 will be admitted free. For reservations or information, call 994-0495 or (215) 444-0446.

□ **Air Force Band of the East,** brass and woodwind quintets, classical concert featuring works from the Renaissance to the 20th century, 2:30 p.m. Sunday, Oct.

8, Conservatory Ballroom, Longwood Gardens.

□ **Chorale Delaware and the Delaware Symphony Chamber Orchestra,** concert, 8 p.m. Friday, Oct. 13, Grand Opera House, Wilmington. Handel's "Dixit Dominus," the Schutz double-chorus "Magnificat," and "There is Sweet Music," a collection of acappella English songs by Elgar, Vaughan Williams, Granger, Britten and Stanford. Tickets cost \$23, \$17 and \$11.

ARTS

□ **Recent paintings by Delaware artist Alan W. Beldyk,** through Oct. 28, The Gallery at Newark, next to Finley's Art Shoppe on Ogletown Road near the Avon plant. A reception will be held noon to 5 p.m. Sunday, Oct. 8.

□ **Gary Akers solo exhibition,** through Oct. 24, Somerville Manning Gallery, Del. 52, Greenville. Akers, a native of the Appalachian Mountains in eastern Kentucky, has exhibited his watercolors at the National Academy Galleries in New York, the Frye Museum of Art in Washington, the J.B. Speed in Louisville, Ky., and the Asheville Art Museum in North Carolina.

□ **Regional Fine Arts Show,** through Oct. 14, Center for the Creative Arts, Yorklyn.

□ **Judy Antonelli and Barbara Neville,** Oct. 6-31, Hardcastle's Gallery, 217 W. 9th St. Plaza, Wilmington. A reception for the artists will be held 5-7:30 p.m. Friday, Oct. 13.

□ **"Views From Afar,"** works by Danish artists Merete Theil and Bengt G. Pettersson, through Oct. 31, Franklin Hall Arts Center, Bohemia Avenue, South Chesapeake City, Md. The artists are well-known to Newark residents, having spent the summer of 1988 here. Many of the works in the exhibition are of Newark scenes.

□ **"Commercial Photography in Delaware,"** featuring the work of Carolos Alejandro, Fred Comegys, Floyd M. Dean, Ron Dubick, Pam and Dick Dubroff, Bob Herbert, Susan L. Gregg, John C. Jenkins, Joe Manlove, Ruth Anne Clarke Mason, Chandler McKaig, Barbara Proud, Rusty Ristine and Terence Roberts, Oct. 6-31, Gallery 913, University of Delaware on the Mall, 913 Market St., Wilmington. The exhibition is being held in conjunction with the Susan Isaacs Gallery. A reception will be held 5-8 p.m. Friday, Oct. 6.

□ **"Recent Paintings by James Schneck,"** through Oct. 31, Delaware State Arts Council Gallery I, Carvel State Building, Wilmington. Schneck holds a master of fine arts degree from the University of Delaware. A reception will be held 4-6 p.m. Sunday, Oct. 22.

□ **Paintings by Margaret Lethen,** Oct. 15 through Nov. 24, Ristorante Carucci, Wilmington, sponsored by the Susan Isaacs Gallery. A reception will be held 4-6 p.m. Sunday, Oct. 22.

□ **Paintings by Jim Hall,** Oct. 6-31, j. Dauphin Gallery, 604 Tattall St., Wilmington. Hall's work is characterized by bold colors and strong, simply defined shapes. A reception will be held 5-8 p.m. Friday, Oct. 6.

Kanin, Seldes to perform

Author Garson Kanin and actress Marian Seldes will read the letters of Ruth Gordon and Thornton Wilder at 8:15 p.m., Tuesday, Oct. 17, at Bacchus Theatre in the Perkins Student Center at the University of Delaware. The program will be free and open to the public.

Kanin's illustrious literary and theatre career spans more than six decades. He first appeared on Broadway as an actor in the famous comedy, "Three Men on a Horse." Early in his career, he became an assistant to the famous George Abbott.

As a writer and director, Kanin has been involved in theatrical performances including "The Rugged Path," in which he directed Spencer Tracy, and "Born Yesterday," which he wrote and directed, starring the late Judy Holliday.

He also directed "Funny Girl," starring Barbra Streisand, and "The Diary of Anne Frank."

While in Hollywood, he and Gordon, wrote "Adam's Rib" and "Pat and Mike." He has written many non-fiction pieces such as "A Thornton Wilder Protege by the Skin of His Teeth." Some of his full-length works include "Remembering Mr.



Actors Garson Kanin (left) and Marian Seldes will perform Tuesday, Oct. 17 at the University of Delaware.



Maugham," "Tracy and Hepburn, An Intimate Memoir" and "Moviola."

Seldes won a Tony Award for her Broadway performance in "A Delicate Balance" and she had long runs in two theatrical smashes, "Equus" and "Death

Trap." She also has been seen on stage with Tallulah Bankhead in Tennessee Williams' "The Milk Train Doesn't Stop Here Anymore" and with Judith Anderson in "Medea."

Films and television also are among her acting credits. She

has taught dance and drama at the Julliard School of Music and is the author of "The Bright Lights," a theatrical memoir, and "Time Together."

For more information, contact the University's Office of Cultural Programs at 451-2631.

University of Delaware
FRIENDS OF THE PERFORMING ARTS
present

Lerner & Loewe's

MY FAIR LADY

October 4 & 5

8:00 pm

Mitchell Hall

University of Delaware, Newark

Produced by New York's Jerry Kravat Entertainment Company who brought the sold-out hit A CHORUS LINE to the campus in 1986

FOR TICKETS CALL: (302) 451-2204

(12-5 p.m. Monday - Friday)

General Public \$20, Faculty, Staff & Senior

Citizens \$16, Students \$8

A LIMITED NUMBER OF 3 OR 5 SEASON
SUBSCRIPTIONS ARE STILL AVAILABLE

(Please Call Mitchell Hall Box Office for Details 451-2204)

Nov. 7 - Paul Taylor Dance Company
Feb. 8 - Baltimore Symphony Orchestra
Feb. 23 & 24 - John Browning - Piano
March 10 & 11 - A Soldier's Play

"Now you can lose even
25% more weight by doing
everyday activities."

Introducing the Body Breakthrough™ Activity Plan
from NUTRI/SYSTEM.



"I lost 92 lbs. with Nutri/System. And what a difference it has made. Now I hike, I walk a lot, I even do aerobics. And best of all, I've got the energy to run after my 2 year-old son all day long!" *Sharon Turner*

The revolutionary Nutri/System Body Breakthrough Activity Plan is part of a comprehensive weight loss program. And only Nutri/System has it. It's the first activity plan designed exclusively for people who want to lose weight—as much as 25% more weight!

Don't Wait, Call Today.

We Succeed
Where Diets
Fail You.

nutri/system
weight loss centers

FREE!

NUTRI/DATA™ Computer Weight Analysis.

PEOPLES PLAZA
(In New Section)
GLASGOW, DE

(302) 836-3610

4510 Kirkwood Hwy.
Wilmington, DE
(302) 994-5708

Marsh &
Silverside Rd.
Wilmington, DE
(302) 475-6010

Call now for your FREE personal consultation. You will learn your ideal weight and the ways NUTRI/SYSTEM™ will help you lose weight and keep it off at a free, no obligation consultation. As people vary, so does an individual's weight loss.

nutri/system
weight loss centers

Join Us For Our Weekly Specials

MONDAYS

STIR FRY NIGHT: Seafood, beef or poultry combine low calories & great taste. Includes salad, rice, rolls & butter. \$11.95

WEDNESDAYS

PASTA NIGHT: A different gourmet selection every week. Includes antipasto, vegetable du jour, garlic bread. \$10.95

THURSDAYS

PRIME RIB NIGHT: Delicious prime rib of beef garnished with freshly grated horseradish. Served with salad, onion rings & vegetable du jour. \$11.95

FRIDAYS

SEAFOOD NIGHT: Mixed grill of seafood; perfect for the fresh seafood lover. Includes salad, potato du jour & vegetable du jour. \$11.95

BANQUET FACILITIES AVAILABLE. BOOK YOUR HOLIDAY PARTIES NOW. ALSO AVAILABLE FOR WEDDINGS, CORPORATE PARTIES & MEETINGS, OR OTHER SPECIAL EVENTS

\$2.00 OFF ANY MENU DINNER ENTREE
WITH COUPON • DOES NOT APPLY TO WEEKLY SPECIALS
OFFER GOOD OCTOBER 9, 1989 THROUGH APRIL 15, 1990



the granary
ON THE SASSAFRAS

Steaks & Seafood • The Pride Of The Eastern Shore
RT. 213 ON THE SASSAFRAS • (301) 275-8177

Monte Carlo Nite

November 11, 1989

7:30 p.m.

Temple Beth El

301 Possum Park Road, Newark, DE

(1.4 miles from Kirkwood Highway)

(Just past Millcroft Retirement Home)

Door Prize Zenith 19" Color TV
with Remote Control

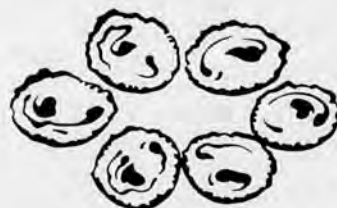
\$5.00 per person

Includes Beef & Beer

(No one under 21 admitted)

For tickets & information - Call (302) 366-8330
20% off with this ad

The Brandywine Room Quest for Quality

Our oysters
have a
French connection.

In the tradition of the world's finest restaurants, we serve renowned Belon oysters, considered by most gourmets as the most exquisite in all the world for their delicate taste and supreme tenderness. Developed originally in France, they are now bred in Maine waters.

As appetizers on our expanded seafood menu, served on ice and in Oysters Rockefeller, they are a savory beginning to an extraordinary seafood dining experience for you. Prepared to perfection by our Executive Chef, and served in the uniquely congenial surroundings of the Brandywine Room.

We invite you to make us your port of call on your next dining-out excursion. For reservations call (302) 594-3156.

BRANDYWINE ROOM
IN THE HOTEL DU PONT

11th and Market Streets, Wilmington, Delaware 19801

ARTS FILE

Newark Symphony chamber concert

□ The Newark Symphony Chamber Orchestra will present the first concert of its 1989-90 season on Saturday evening, Oct. 7.

The concert will begin at 7:30 p.m. in Memorial Hall of First Presbyterian Church, 292 W. Main St.

It will open with Beethoven's Praeludium and Fugue in F, followed by Mozart's Horn Concerto No. 3 in E flat, K. 447, with featured soloist Dr. Paul A. Vance Jr.

Vance is co-principal French horn player for the Newark Symphony Orchestra and a member of the symphony board since its inception.

Vance retired from the DuPont Company in 1985 as a senior engineer.

The final work, to be performed after intermission, will be the Mendelssohn Symphony No. 4 in A, Opus 90, well-known as "The Italian Symphony."

The chamber group is formed from members of the Newark Symphony Orchestra, and is conducted by symphony music director Roman Pawlowski.

Admission is free. Goodwill donations are welcomed.

Gallery shows Beldyk works

□ The Gallery at Newark will show works by Delaware artist Alan W. Beldyk through Oct. 28.

A reception will be held noon to 5 p.m. Sunday, Oct. 8 at the Gallery, located next to Finley's Art Shoppe on Ogletown Road near the Avon facility.

Gallery hours are 9:30 a.m. to 6 p.m. Monday through Saturday.

WDEL to air 'Mystery Theatre'

□ "Mystery Theatre," a radio program featuring spine-chilling suspense and celebrity voices, will debut at 9 p.m. Saturday, Oct. 7 on WDEL-AM 1150.

The debut will be a special three-hour program.

"Mystery Theatre" will air regularly after the 9 p.m. news Tuesday through Saturday.

Also making its debut Saturday will be "The Comedy Show," hosted by Roy Firestone and featuring classic and contemporary comedy works by such stars as Bob Hope, Jack Benny and Laurel and Hardy. "The Comedy Show" will air after the 7 p.m. news.

Art on Green attracts variety of artists

by Nancy Turner

Of the Post staff

Having been rained out on Sept. 23, the 19th Annual Art on the Green in New Castle was a huge success when the weather was more than cooperative Saturday.

Art on the Green is sponsored by the New Castle Hundred Lions Club and generates vital funds for the organization's many vision conservation and charitable programs.

Forty five artists, five photographers and 125 craftsmen exhibited their best work, which was a substantial increase over last year.

Although Art on the Green is not a juried show, all exhibitors have earned recognition within the art community and were in-

dividually invited to participate in the event. Some came from as far away as Rhode Island, Maine, and New York.

Among the impressive collections on display were water colors by Charlotte Rupp of Newark, photography by Mike Biggs, Delaware landmarks by Vernon L. Good, and a sampling of paintings by Gibby Perry, who was named Delaware Today Magazine's Best Local Artist of 1989.

One of Newark's favorite artists, Charlu Schilling, had a number of her brilliant watercolor landscapes in the show, although her recent series of sunflowers paintings seemed to attract the most interest.

Schilling describes slightly abstract paintings like "Autumn Leaves Adrift" and "White Clay Creek" as "the kinds of paintings you don't stop. The pat-

terns and the colors change as you drift through. They're busy, but I like them that way."

Nearby, Milton Downing of Wilmington delivered a social message with a large contemporary display of oil and collage combination paintings. Apprehended criminals appear in many of them as they attempt to hide their faces from view.

"I look in the newspaper and on the evening news to get my subjects," he said. "I always wondered why some of them (the criminals) hide when they are caught and not while they are committing the crime."

His paintings depict the notorious "roofers" of Philadelphia after their arrest, a busted drug pusher, and the perpetrators of a SEPTA scam.

On a lighter note, his commercial art has appeared recently on the covers of New Castle

County Parks and Recreation program circulars.

Saturday was also a grand day for area crafts persons selling their wares and shoppers getting the jump on the holidays.

Bob Lockerman of North Wilmington, drew a crowd all day with his baskets full of dried flowers and dainty colonial bouquets in beautiful shades of pink, blue and fuchsia.

Jacqueline Nye sold a variety of one-of-a-kind lacy Victorian bonnets, potpourri bags and purses that she makes in her home from antique lace.

There were gourmet dog biscuits from Marilyn's Homebaked Dog Bites of Greenville, available in cheese, peanut butter and mixed; and painted Old World Santa Clauses, lean bearded and clad in colorful robes to recall the patron Saint's origins as a Bishop.

The New Castle Hundred Lions Club took advantage of the agreeable weather and boosted their fund raising efforts with the sale of over 1500 cups of soda, 1600 hot dogs, hamburgers and Italian sausages and 200 boxes of pop corn.

According to Harold Evans, New Castle Hundred Lions Club publicist, "All our funds that came from the public are put back into the public in some fashion. We have established a scholarship fund for a deserving student or students in our area and we are supporting the Lions Research Center and Wilmer Eye Institute for Diabetes Research."

There are many other organizations, ranging from the Meals on Wheels to Delaware Special Olympics, who benefit from their Lion's share of good community work.

Cartoons, caricatures at Brandywine

More than 40 magazine illustrations dating from the 1880s to the late 1950s will be on display at the Brandywine River Museum now through Nov. 19. "Cartoons and Caricatures from the Collection" offers visitors the opportunity to view outstanding examples of American illustrations seldom seen but in the museum's permanent collection.

Among the 35 well-known humorists represented in the

exhibition are Thomas Nast, Frederick Burr Oppen, Rube Goldberg, Arthur Burdett Frost, John Held, Jr., Edward W. Kemble, and John Groth. As cartoonists, they contributed to such publications as Harper's Weekly, Judge, Puck, Life, and the New Yorker.

Their work reflects political, social and cultural life in the United States. Political cartoons such as Thomas Nast's "Russians at the Gates of Herat" and "Bismarck Putting

It in His Pipe to Smoke It," Frederick Burr Oppen's "Society of Sunday Closing Cranks," and Edward W. Kemble's "He Pulls the Strings" (1880s) targeted corrupt public officials, mighty international figures, power brokers, and the U.S. Senate.

In contrast, there are the comical, apolitical images by Arthur Burdett Frost and Rube Goldberg. Frost's work featured caricatures of rural types who were often lanky and

rumpled, with striking heads of shaggy hair and large unruly beards. He also included animals of the same nature in his cartoons. "All Paint and No Engine," and "Ferocious Lion" are both fine examples of this style.

The Brandywine River Museum is located on U.S. 1, just west of Pa. 100 in Chadds Ford. Hours are 9:30 a.m. to 4:30 p.m. daily. There is an admission fee. Group tour rates are available.

ICE

three small children. Naturally, I was not nearly as attractive or easy to care for as the tanned, friendly, handsome, wealthy executive sitting across the aisle; I won't bore you with what the stewardess didn't do for us, suffice it to say that my four-year old got even with an entire planeload of people when he locked himself in the bathroom.

I suspect that a motherly judge would have been pleased as punch with the outcome. The frantic stewardess shouted

through the door to my bewildered child that all he had to do was push the little silver knob to the right and then turn the handle to the left. At that point, I gently explained to the stewardess that the kid didn't know left from right or up from down.

As I remember and savor that incident, I think I will forego maiming my son. Instead I will fill the ice trays, freeze them and slide them between his sheets.

—Dorothy Hall, 1989

NOW OPEN

Beau's Bar-B-Que

OPEN 7 DAYS

The PLUMPEST BREAST in TOWN

"Chicken, Ribs & More!"

• Try our 3 pc. **Chicken Dinner \$3.79**

14 Salem Village Square
292-2000

Delaware's largest selection of

HALLOWEEN

• COSTUMES
• ACCESSORIES
MAKE-UP • MASKS

For Stage, Film & TV
Sizes from 2 Mos. to XLG Adult

★ **THE MAGIC FUN STORES** ★

210 W. Market St.
Newport Plaza Shopping Ctr.
Newport, DE
(302) 998-7159

58 E. Main St.
Newark Mini-Mall
Newark, DE
(302) 737-0165

**HOURS: Daily 10-8
Sun. 12-6**

Village Station
FAMILY RESTAURANT

DAILY BREAKFAST SPECIALS
Starting at \$1.99

Sat. & Sun. Breakfast Buffet 7-2
\$4.90

Salad Bar Daily
Senior Citizen Discounts

OPEN DAILY
Mon 4pm-9pm
Tue - Sun 7am-9pm
Fri & Sat until 10pm

DuPont Highway
At Hares Corner
New Castle, DE
328-3311

Garfield's
Pub & Eatery

THURSDAY
Girls Mania!

Where the Girls Just Wanna HAVE FUN!!!

• Flowers • 99¢ Drinks 9-12
• Ice Champagne • Live Entertainment

THURSDAY
"CHA CHA BOYS"

FRIDAY & SATURDAY
"THE SLIP"

EVERY MONDAY
MONDAY NITE FOOTBALL

On our 9' screen
Oct. 9 -
N.Y. Jets vs L.A. Raiders

EVERY WEDNESDAY
COMEDY NIGHT!

TWO PROFESSIONAL COMEDIANS

TEEN NIGHT 7-11 PM

WIN A HEARSE OCT. 26
Open Mon. & Tues. at 7:30 p.m.
Wed. thru Sat. at 3:30 p.m.
ROUTE 40 - 5 MILES WEST OF ELKTON
Phone 301-287-5600

MONDAY NIGHT SPECIAL!
New England Clambake

Dinner Includes: Soup or Salad, Lobster, Shrimp, Clams, Baby Red Potatoes, Corn on the Cob & more.

ONLY \$9.95*

HARBOR HOUSE

200 Cherry Street
North East, MD
301-287-6800

THE AREAS BEST SUNDAY BRUNCH
Served 10 am - 2 pm
Call for Details

*No Taste or Entertainment Coupons at this price.

Pick-A-Pair!

Choose two beautiful La-Z-Boy® chairs and pay one low price!

We've cut prices dramatically on pairs of our famous La-Z-Boy® chairs. Every chair in our line is included. Even if you only want one chair, you can buy it at half the price of a pair.

Select from our huge inventory of over 2,000 chairs—available in your choice of more than 1,000 fabrics, textures and colors.

Two chairs for one low price! Only at your La-Z-Boy Showcase Shoppes®. Hurry in today for the best selection.

Sale ends Mon. Oct. 9th

La-Z-Boy SHOWCASE SHOPPES

WILMINGTON
4723 Concord Pike Near Concord Mall next to the Sheraton
(302) 478-1939
Hours: Mon. thru Sat. 10-9; Sun. noon to 5

NEWARK
Meadowood Shopping Center
2651 Kirkwood Hwy.
(302) 737-9800
Hours: Mon. thru Sat. 10-9; Sun. noon to 5

Plus 40 more great styles!

LIFE FILE

Eastburn-Teal wins pageant title

Wendy C. Eastburn-Teal of Hockessin has won the Miss International Job's Daughter Pageant in Calgary, Canada. As title winner, she must represent the highest ideals of Job's Daughters.

The International Order of Job's Daughters is an organization for girls ages 11 to 20 who are related to Master Masons. It bases its teachings on Job 42:15, and members must show humility, responsibility, leadership and pride of achievement and self.

They are encouraged to learn and practice reverence for God, loyalty to flag and country, respect for elders, and love for all the world.

The pageant competition involved five categories: a detailed written test of knowledge of the organization, an oral presentation, a personal interview, a precise inspection of the official regalia, and stage presence.

Thirty-three contestants competed before an audience of 4,000 people.

Eastburn-Teal, 18, has deferred college plans for one year to travel around the world to promote Job's Daughters.

Her reign will end in August 1990, at which time she will



resume her studies in physical therapy at the University of Delaware.

Elkton High Touchdown Club

The Elkton High School Touchdown Club will host radio personality Ralph McKinney's "Memory Lane Show" Saturday night, Nov. 18 at Singler Fire Hall in Elkton, Md.

There will be music from the 1920s through the 1980s, as well as dance contests.

Cost is \$15 per couple, \$10 per single. For ticket information or table reservations, call evenings at (301) 398-5835, 398-6636 or 398-7374, or days at 451-1421.

Walking for the health of it

With summer gone, it's time to say goodbye to such warm weather activities as swimming, fishing, and softball.

There's one activity health conscious exercisers can enjoy year around, however. That is walking, the sport for all seasons.

The New Castle County Department of Parks and Recreation's walking paths have always been popular spots for a stroll but these days trails in Greenbank, Delcastle, Bon-sall and Banning parks are chock-full of zealous walkers.

On any given day, determined marchers can be seen making strides through a county park trail.

Jack O'Neill, fitness authority and University of Delaware associate professor, says that the walking craze in Delaware is in line with a growing trend throughout the United States.

"New research over the past three or four years has substantiated that walking may be the most beneficial exercise there is," says O'Neill, director of recreation and intramurals at the University.

"The no-pain-no-gain concept no longer holds any credence," he says. "In fact, we now believe

that a well-developed walking program is actually more beneficial than perhaps some more vigorous exercises."

O'Neill says that a "well-developed" walking program consists of walking at a rapid pace that is vigorous enough to increase one's heart rate. This should be sustained for a minimum of 20 minutes, 30 minutes being ideal.

O'Neill recommends walking three or four days a week.

Still, not all walkers take the every-other-day route to fitness. Joseph Burns of Hyde Park walks more than three miles a day at the Delcastle Recreation facility, accompanied by his canine pal Holly.

Burns says his daily stint in the park is just what the doctor ordered. "When I retired from Hercules, the doctor told me to walk every day and take two aspirin to keep the blood thin."

"My dog could use the exercise too," Burns adds, laughing.

A graduate of Salesianum High School and Beacom College, the Wilmington native says that he enjoys walking in Delcastle because it's so well-kept. "I love the scenery and the

park is so nice. I've also gotten to know some of the walkers because I see them so much."

Tammy Heistand of Newark and her 15-month-old son Christopher and dog Gypsy also enjoy promenades at Delcastle.

Heistand says that the entire entourage walks in the park an average of three or four days a week. "We live in Newark, so it's about a 15 minute drive here. We usually go around the loop once or twice."

And although it seems like a big production, what with the stroller, the dog, and the car seat, to the Heistands, it's worth it.

"We're still not used to being in an apartment, Gypsy in particular, so the fresh air and exercise are really great," Heistand says. "Sometimes, when my husband comes home from work, we'll load up the car and come back for a second walk."

Corienne Buckley of Hockessin says she enjoys the scenery at Delcastle but she walks for health reasons and not aesthetics. "I joined Weight Watchers about a year ago and exercise was stressed. Walking was especially recommended."

That was twenty pounds ago. "I just love walking and I'm so pleased with the results of it!"

Relatively new to the area, Ethel and Harold Reisman say they walk in the park about three times a week.

Originally from New York City, the retired couple moved to Delaware about four years ago. "We drive over to the park and walk the trail usually once around, that's one and one-half miles," says Harold Reisman.

Adds his wife, "we don't know all the other walkers, but we all recognize and greet one another any way. Everyone is so friendly."

O'Neill recommends that anyone over age 35 should consult a doctor before beginning an exercise regime. He also stresses proper footwear.

"A running shoe is ideal for walking, you need something with a broad heel, and an extra cushioned sole," he says.

A stroll around the walking trail at Greenbank Park is a half-mile, as is the trail at Bon-sall Park. Banning's trail is three-quarters of a mile, while Delcastle's is one and one-half mile.

fall fever
SALEPRICE
APPEALSTARTS 10 AM
WEDNESDAY FOR
1 BIG WEEK

PAY JUST

\$10
to \$30
elsewhere

SWEATERS

Cables & Shakers

MIX 'N MATCH SEPARATES

Knits, Rayons & Challis

CORDUROY PANTS

FLEECE TOPS & BOTTOMS

PLUS...

other unadvertised specials

Shirts, Blouses, Skirts,
Accessories and More!Save on
manufacturers'
current inventories,
overstocks &
closeouts...
All First Quality!

The famous names you know & love!

CRAYON

bonjour GITANO

BRITANNIA
JOUJOU

ONE-STEP-UP

NASTY

YES
FantaseasPRIVATE DRESSING ROOMS • EZ LAYAWAY PLAN
HASSLE-FREE RETURN POLICY

VISA • MASTERCARD • DISCOVER

QUALITY + LOW PRICE + FASHION APPEAL =

great clothes deal!

PRICE
APPEALUNIVERSITY PLAZA, ROUTE 273, NEWARK
OPEN DAILY 10-9; SUN. 12-5

THE LUMBER YARD

YOUR PROJECT STORE!

HIKE YOUR
INSULATION NOW!
ROLL OUT EXTRA SAVINGS*FREE
NFL TEAM JACKET\$34.95
VALUEWhen you buy 15 rolls or more
of any Owens-Corning Pink
Fiberglas® insulation or 10 rolls
of R-19 or higher R-value
insulation.This NFL jacket comes in your choice of 28 NFL
teams. It's made of satin nylon with insulated lining.
Add \$3.00 for postage and handling.Hurry, offer ends October 15, 1989. Visit The
Lumber Yard for details.SEE THE NFL JACKET ON DISPLAY
NOW AT THE LUMBER YARD

DON'T WAIT TO INSULATE!

R19 - 6 1/4" x 15" Unfaced

\$8.32 17¢
per roll sq. ft.
48.96 sq. ft. per rollOWENS-CORNING
FIBERGLAS*Savings vary. Find out
why in the Seller's Fact
Sheet on R-values. Higher
R-values mean greater
insulating power.

R11 - 3 1/2" x 15" Kraft

\$10.57 12¢
per roll sq. ft.
88.12 sq. ft. per roll

R19 - 6 1/4" x 15" Kraft

\$9.79 20¢
per roll sq. ft.
48.96 sq. ft. per roll

R19 - 6 1/4" x 23" Kraft

\$14.99 20¢
per roll sq. ft.
75.07 sq. ft. per rollCome home to quality.
Andersen.40% off any stock item or
we'll special order any Ander-
sen item (Except bays and bows).Famous Andersen®
Windows Are Affordable
and Easy To InstallTHERE'S NO SUBSTITUTE FOR
ANDERSEN QUALITY!
For Replacing Old Windows
or New ConstructionORDER BY OCTOBER 6th
FOR DELIVERY ON NOVEMBER 6th40% OFF MFG.
List PriceAndersen® Perma-Shield®
Naroline Windows with
High-Performance Glass• Completely prefinished • Standard sizes to fit over
exterior 6,000 openings
• Easy fingertip opening and
closing

TYPICAL SAVINGS (High-performance glass)

2032 (white).....

Dist. List Price \$179.90

\$107.94

\$115.65

2832 (white).....

Dist. List Price \$202.92

\$121.75

\$131.09

2432 (white).....

Dist. List Price \$192.75

3032 (white).....

Dist. List Price \$218.38



NEWARK

Old Baltimore Pike Ind. Park

453-0540

Hours
Mon.-Thurs. 7:00-5:30
Fri. 7:00-8:00
Sat. 8:00-3:00

LIFE FILE

Masons honor
McVey, Scarlott

□ C. Granville McVey of Newark and Richard A. Scarlott of Brandywine Hundred have received the highest honor of Scottish Rite Freemasonry, the Thirty-third Degree.

The degree conferral in Pittsburgh, Pa. climaxed the 177th annual meeting of the governing body of the 424,000-member Scottish Rite organization of the Northern Jurisdiction of the United States.

The Thirty-third Degree is award to masonic leaders for "outstanding service to Freemasonry or significant contributions to humanity," according to Arne E. Carlson, who heads the Delaware Scottish Rite.

McVey, a life-long resident of Delaware and a 1942 graduate of Wilmington High School, has lived in Newark since 1953. He retired from the maintenance department of the DuPont Company's Stine-Haskell Laboratory in 1987.

McVey is a veteran of World War II and a life member of the Aetna Hose, Hook and Ladder volunteer fire company.

He has been very active in Freemasonry, serving as master of his lodge, Hiram No. 25, in 1964-65, and holding important posts in various York Rite and Scottish Rite bodies, as well as

in other masonic organizations. Currently, McVey is grand master of the Cryptic Masons of Delaware and an officer of the Consistory of the Delaware Scottish Rite. He has received a number of masonic awards in the United States and Canada.

Scarlott, an Ohio native, has lived in the Wilmington area for 25 years. He worked in the management of The Dry Goods before retiring in 1986.

Colonial Dames
fall meeting

□ The Delaware State Society Colonial Dames XVII Century will hold its fall meeting and genealogical workshop Friday, Oct. 27 at the Dover Sheraton Inn.

Mrs. Alan Dahlberg, president of the Fort Christina Chapter and state registrar, will be guest speaker during the genealogical workshop. Participants should bring pencil, paper and copies of applications and supplements, family group sheets and ancestor charts.

The meeting is open to the public and offers an opportunity for anyone interested in genealogy to discuss their research.

Cost is \$8 and reservation deadline is Friday, Oct. 20. Send check payable to the society to Mrs. Alfred Appleby, 1729 Bear-Corbitt Rd., Bear, DE 19701.

UD plans homecoming parade

Blow the horns, beat the drums, wave the flags, toss the batons — the University of Delaware Homecoming Parade is on the march again!

By popular request from alumni and students alike, the parade is being held once more as one of the special events of the University's Homecoming Weekend.

At 9 a.m., Saturday, Oct. 28, the parade will begin at Newark Hall parking lot, then march down Haines Street, move west on Delaware Avenue, go north on South College Avenue and end at the parking lot near Daugherty Hall.

As traditional as cheering the Blue Hens on to victory on a crisp fall Saturday, the Homecoming Parade will feature floats, bands, candidates for Homecoming queen and king and will be led by the grand marshals, President E.A. and Jerry Trabant. Community groups interested in participating in the parade should contact Kathleen Cogan, Homecoming coordinator and alumni relations associate in charge of special events, at 451-1231.

According to Cogan, there has been a lot of positive response and enthusiasm from student groups who are entering floats, decorating cars and marching or riding together in the parade. Music will be provided by the 170-member U.D. Marching Band and marching bands from area high schools.

Entries will be judged and trophies awarded at the Goal Post Party after the football game. The President's Trophy and a cash prize will be awarded to the best overall unit; the Blue Hen Trophy will be awarded to the unit displaying the most spirit and the Alison Trophy will be awarded for originality and creativity.

Judges will be Ronald Gardner, mayor of Newark; Robert

V.A. Harra Jr., president of the Alumni Association; Bill Horleman, disc jockey for WDEL; Neysa Gaines Smith, former president of the Black Alumni Organization; and Barbara Stratton, vice president of the Alumni Association.

"A Homecoming parade is a festive event that brings together students, alumni staff and members of the Newark community," said G. Arno Loessner, vice president for advancement and University Secretary. "It's very gratifying that our students and alumni have expressed interest in the parade and are willing to work toward reestablishing this fine University of Delaware tradition."

Those serving on the

Homecoming Parade Committee and the offices and organizations they represent include Timothy Brooks, student affairs; William Clark, alumni relations and the Student Alumni Association; Loretta Dworsky, University relations; Raymond Eddy, Greek affairs; Larry Elveru, University information; Kevin Howard, Interfraternity Council; Sylvester Johnson, athletics; Edward McHale, grounds; Stephanie Parker, Panhellenic Council; and Gary Summerville and Lawrence Thornton, public safety.

For further information about the Homecoming Parade, contact Cogan in the Office of Alumni Relations at 451-2341.

1,000th STORE
SALE

A BRATION

We're celebrating the opening of our 1,000th store by taking an **EXTRA 25% OFF EVERYTHING** in stock.

25-50% OFF
ENTIRE STOCK

EVERY COAT, JACKET & BLAZER • EVERY SWEATER

EVERY PAIR OF PANTS, JEANS & CORDS

EVERY TOP • EVERY DRESS

EVERY ACCESSORY & MORE!

**EVEN MARKED-DOWN ITEMS
WILL BE FURTHER REDUCED
FOR SAVINGS TO 50% OFF!**

Excludes only multiple price lingerie & jewelry items.

Hurry in before Monday (Columbus Day)
for best selection!

**JUNIOR • MISSES
PLUS SIZES**

GIRLS SIZES NOW IN MANY STORES

FASHION BUG®
FASHION BUG PLUS®

Styles to fit every you.®

NORTHEAST PLAZA, ROUTE 40 & 272, NORTHEAST
BIG ELK MALL, ELKTON ■ KENT PLAZA, CHESTERTOWN
COLLEGE SQUARE SHOPPING CENTER, NEWARK
OPEN DAILY 10-9; SUN. 12-5

Use your Fashion Bug Charge. VISA, MasterCard, American Express & Discover also accepted.

Kmart
The Saving Place

UNIROYAL

35,000-Mile Warranty*

45,000-Mile Warranty*

55,000-Mile Warranty*

TIGER PAW A/S
26⁹⁷
P155/80R13

SIZE	PRICE	SIZE	PRICE
P155/80R13	26.97	P205/75R14	39.97
P165/80R13	29.97	P205/75R15	41.97
P175/80R13	32.97	P215/75R15	42.97
P185/80R13	34.97	P225/75R15	44.97
P185/75R14	35.97	P235/75R15	45.97
P195/75R14	37.97		

TIGER PAW II
31⁹⁷
P155/80R13

SIZE	PRICE	SIZE	PRICE
P155/80R13	31.97	P215/75R14	48.97
P165/80R13	34.97	P205/75R15	47.97
P175/80R13	37.97	P215/75R15	50.97
P185/80R13	39.97	P225/75R15	52.97
P185/75R14	41.97	P235/75R15	54.97
P195/75R14	44.97	P185/75R14	42.97
P205/75R14	46.97		

TIGER PAW PLUS
36⁹⁷
P155/80R13

SIZE	PRICE	SIZE	PRICE
P155/80R13	36.97	P205/75R14	54.97
P165/80R13	39.97	P205/75R15	56.97
P175/80R13	42.97	P215/75R15	58.97
P185/80R13	44.97	P225/75R15	60.97
P185/75R14	47.97	P235/75R15	62.97
P195/75R14	51.97	P235/75R15*	64.97

SAVE EVERYDAY ON LOW TIRE PRICES

BRIDGESTONE
\$402 RADIAL
• 55,000-mile warranty*
• "A" traction rated tire

SIZE	PRICE	SIZE	PRICE
P155/80R13	37.97	P205/75R14	56.97
P165/80R13	41.97	P205/75R15	58.97
P175/80R13	44.97	P215/75R15	60.97
P185/75R14	46.97	P225/75R15	63.97
P185/75R14	49.97	P235/75R15	66.97
P195/75R14	53.97		

Mohawk RUBBER COMPANY
XT RADIAL
• 55,000-mile warranty*
• Discontinued tread design

SIZE	PRICE	SIZE	PRICE
P155/80R13	33.97	P195/75R14	45.97
P165/80R13	36.97	P205/75R14	48.97
P175/80R13	39.97	P205/75R15	49.97
P185/80R13	40.97	P215/75R15	52.97
P185/75R14	43.97	P225/75R15	54.97

Mohawk RUBBER COMPANY
CUSTOM A/S
• 35,000-mile warranty*
• While quantities last
Minimum 22 available per store

SIZE	PRICE	SIZE	PRICE
P155/80R13	\$25	P205/75R14	\$38
P165/80R13	\$28	P205/75R15	\$40
P175/80R13	\$31	P215/75R15	\$41
P185/80R13	\$33	P225/75R15	\$43
P185/75R14	\$34	P235/75R15	\$46
P195/75R14	\$36		

FRONT-END ALIGNMENT FOR MANY CARS... \$21.97
Additional parts, services extra

30,000-mile Limited Warranty*

ARRESTOR
1-yr. Limited Warranty*

EXIDE
CENTURA
Batteries \$3 less with exchange

56.97 Sale Price
2-wheel disc or drum brake special for many U.S. cars. Imports and lt. trucks extra. Additional parts, services extra. *Limited warranty. Details in store.

13.97 Single unit (welded system) excluded. *Details in store.
Sale Price Carryout. Arrestor muffler; many cars, lt. trucks. Arrestor Plus** Carryout... 17.97 Installation, clamp, hangers, pipes at additional charge. **The last muffler you will buy for your car*

\$61 Lowest Price Of The Year
Centura 850 delivers up to 850 CCA's. 75-month warranty*. Motorvator 65... \$40 Batteries in sizes for many cars, lt. trucks. *Limited warranty—details in store

Additional parts, services and labor may be needed at substantial extra cost

MONROE
Installation Available in Stores With Service

24.97 Most Omni, Horizon
Carryout Ea. Super Struts. GM X-Body Cars... Ea., 29.97 Mustang/T-Bird Cars... Ea., 34.97 Gas struts \$20 more per pair. Additional parts, services extra. *Rear only

13.97 Sale Price
Amoco LDO oil/lube/filter for many cars and lt. trucks. Additional parts, services extra.

39.97 Everyday Low Price
Fuel injector cleaning helps improve mileage and performance for many fuel systems. Additional parts, services extra. Details in store

On Sale Mon., Oct. 2 Thru Sat., Oct. 7

NEWARK 737-5459
HRS: Mon. thru Sat. 8-6

ELKTON 398-0340

Jacobs Brothers to sing

The Jacobs Brothers will perform Saturday, Oct. 14 in Wilmington as part of the New Castle County Association of Evangelicals' annual banquet and concert.

The free concert will begin at 8 p.m. in Immanuel Baptist Church, 2414 Pennsylvania Ave.

It will be preceded by the Association's annual banquet at 6 p.m. Cost of the banquet is \$8, and reservations are available by calling 731-7716.

The Jacobs Brothers, from Dillsburg, Pa., are four talented young men dedicated to spreading the gospel through music.

Since 1962 the group has traveled millions of miles, produced numerous record albums and hosted scores of international tours.

Currently, the Jacobs Brothers' weekly television is aired on several stations in the northeast.

Their King's Kids Kamp brings thousands of young people to central Pennsylvania each summer to hear gospel music and to enjoy a Christian camping experience.



The Jacobs Brothers gospel music group, made up of Bob, Mike and Dick Jacobs and Mike Lawver.

Catholics plan 1989 Renewal

Northern Delaware Catholics are preparing for the annual Charismatic Renewal to be held next week in Ocean City, Md.

The renewal will open Friday, Oct. 13 in the Sheraton Hotel and Conference Center and continue through Sunday, according to Deacon Howard J. O'Connor of Newark's Holy Family Church, the bishop's liaison to the event.

Friday evening's keynote speech will be by Brother Paul Crawford of Manchester, N.H., a popular speaker at renewal conferences nationwide.

Crawford will speak on the topic, "Let Us Climb the Mount of the Lord."

Saturday morning, Crawford will give the second part of that presentation.

Sister Regina Kropp of St. Mark's High School will offer a teaching on "That He Might Instruct Us in His Ways" at 11 a.m., and the Rev. Jim Hughes of Brooklyn, N.Y. will speak at 2:30 p.m. on "Walking in His Paths."

The sacrament of reconciliation precedes the afternoon liturgy. The celebrant will be the Most Rev. James C. Burke, vicar for urban affairs.

At 5 p.m., prayer teams of the Diocesan Healing Ministry will be available for all in need of healing prayers.

Hughes will be Saturday night's keynote speaker. His topic will be "The Joy of the Lord Is My Strength."

At 9:30 a.m. Sunday, there will be a prayer meeting on the beach followed at 11 a.m. by liturgy at St. Andrew's Church on Coastal Highway.

During the conference, Joseph House of Ocean City will display their book ministry. Free copies of "The Word Among Us" will be available.

Conference moderators will be Chuck and Irene Staropoli of Holy Family Church in Newark. "This year's sessions offer such good teaching presented dynamically, lively praise and worship led by the music ministry, and personal witnesses that everyone who attends the conference will be renewed and blessed," Chuck Staropoli said.

"If you have never attended a conference or prayer meeting," said O'Connor, "come and be filled with joy and the Holy Spirit. Others who have attended know what joy and deepening of the faith is in store for them."

To register, send check for \$15 per person or \$25 per couple along with a self-addressed stamped envelope to Howard O'Connor, P.O. Box 8093, Newark, DE 19714-8093.

NewArk offers sexuality courses

The New Ark United Church of Christ is once again offering its well-received program on sexuality, Learning About Myself and Others.

The program is for elementary school children, and its primary objective is to bring parents and children together before adolescence to discuss sexuality in a classroom situation.

Learning About Myself and

Others focuses on topics from individuality to puberty.

The program is integrated and follows a natural succession of human development, corresponding with a child's ability to grasp concepts of sexuality.

Classes meet from one to three times, depending on grade.

The first grade session was held earlier this week.

Second grade will meet at 7

p.m. Tuesday, Oct. 10 and third grade at 7 p.m. Mondays, Oct. 9 and 16.

Fourth grade will meet at 7 p.m. Tuesdays, Oct. 17 and 24 and fifth grade at 7 p.m. Thursdays, Nov. 2, 9 and 16.

Sixth grade will meet at 7 p.m. Mondays, Nov. 6, 13 and 20.

All classes meet in Calvary Baptist Church, 215 E. Delaware

Ave., Newark.

New Ark United Church of Christ requires that parents and children attend together.

A donation of \$3 per child is requested to help defray the cost of course materials.

Learning About Myself and Others is intended to assist, not replace, the parent in the educational process.

CHURCH CALENDAR

□ **"Life and Health, Death and Dying,"** six-session seminar, 7:30 p.m. Wednesdays, through Nov. 8, Head of Christiana Presbyterian Church, 1100 Church Rd., Newark. For details, call the church office at 731-4169.

□ **Deborah Circle children's clothing sale,** 9:30 a.m. to 1 p.m. and 7-9 p.m. Friday, Oct. 6 and 9:30 a.m. to 1 p.m. Saturday, Oct. 7, Limestone Presbyterian Church, 3201 Limestone Rd. Toys will be included in the Saturday sale. Tags for consignment can be purchased at the church office on Wednesdays and Thursdays after Labor Day.

□ **Catholic Diocese of Wilmington Healing Mass,** 8 p.m. Friday, Oct. 6, St. Mary of the Assumption Church, Wilmington. The Rev. Harry P. Weaver of St. John-Holy Angels Church in Newark will preside and Rev. Richard Reissman, pastor of St. John-Holy Angels, will be homilist. Music will be by Lee Baum and the Messengers of St. John the Beloved Parish.

□ **St. Mark's flea market,** 8 a.m. to 4 p.m. Saturday, Oct. 7, St. Mark's United Methodist Church, 1700 Limestone Rd., Stanton. Refreshments and baked goods will be sold and proceeds will benefit missions. Boy Scout Troop 30 will hold a car wash. \$3.

□ **Christiana Presbyterian Church Homecoming Day,** 11 a.m. Sunday, Oct. 8, Christiana Presbyterian Church, 15 N. Old Baltimore Pike, Christiana. The Rev. Willett Smith, interim pastor, will bring the message of the day. Following morning worship, the women of the church will serve a covered dish luncheon for members and guests in the Ernest Freeman Hall Memorial Building. Traditionally, Homecoming Day offers an opportunity for all friends and former members to renew acquaintances, share memories and enjoy fellowship.

□ **Missionary commissioning service,** 11 a.m. Sunday, Oct. 8, Friendship Baptist Church, 2200 S. College Ave., Newark. Jack and Lynn Painter, members of the church, have been commissioned through the Southern Baptist Convention's Mission Service Corps to serve as Baptist

campus ministers at the University of Delaware.

□ **Cynthia Crofts concert,** 6:30 p.m. Sunday, Oct. 8, Faith Baptist Church, 4210 Limestone Rd., Pike Creek. Crofts is a graduate of the Philadelphia College of Bible and was featured soloist in a PCB special event at the Valley Forge Music Fair. The concert is free and open to the public. Nursery will be available. For information or directions, call the church office at 998-4105.

□ **Ebenezer Fall Thrift Sale,** 9:30 a.m. to 12:30 p.m. Friday, Oct. 13 and Saturday, Oct. 14, Ebenezer United Methodist Church, 525 Polly Drummond Hill Rd., Newark. Toys will be included in the Saturday sale. Tags for consignment can be purchased at the church office 10 a.m. to noon through Oct. 11.

□ **Kirkwood United Methodist Church turkey dinner,** 3-7 p.m. Saturday, Oct. 14, at the church, Del. 71, Kirkwood. Donation of \$6 for adults and \$2 for children 4-11. \$6 for all take-out meals. For details, call the church office at 834-9257.

□ **St. John's United Methodist Church turkey dinner,** serving from 4-7 p.m. Saturday, Oct. 14, Lewisville, Pa. Township Hall, just north of Fair Hill, Md. Cost is \$7 for adults, \$3 for children under 12. There will be craft and bake tables.

□ **The Jacobs Brothers in concert,** 8 p.m. Saturday, Oct. 14, Immanuel Baptist Church, 2414 Pennsylvania Ave., Wilmington.

□ **Ham and oyster supper,** Saturday, Oct. 14, Salem United Methodist Church, 469 Salem Church Rd., Newark. Seatings at 3:30, 4:30, 5:30 and 6:30. Adults \$10 and children 5-12 \$5. For reservations, call Bea Dennie at 737-0220 or the church office at 738-4822.

□ **Newark-West Wilmington CROP Walk '89,** an event to raise funds for the fight against hunger, will be held Sunday, Oct. 15 at Skyline United Methodist Church in Pike Creek. Registration will begin at 1 p.m. and the walk at 2 p.m. Participants should begin soliciting pledges. Proceeds benefit Church World Service and local programs which assist the needy.

WhiteClayCreek Presbyterian Church
15 Polly Drummond Hill Road
Newark, DE 19711
731-2100
"The Lord Did Provide"

8:30 Worship
9:45 Sunday School (all ages-Adult, Nursery)
R. Dennis Maclester, Pastor

11:00 Worship - nursery & junior church
Communion 1st Sunday each month
Grant F. Gillard, Assoc. Pastor
Nancy F. Gillard, Assoc. Youth Pastor

NEW HOPE CHURCH
JESUS
Teaching, Preaching with Signs & Wonders following Jesus Alive

Sunday
9 a.m. and 11:30 a.m.
7 p.m.
Praise & Worship
Family Church
A Charismatic Teaching Center
Pastor & Mrs. Larry Carpenter

Wednesday 7:30 PM
Prayer & Praise
A World Outreach Center
810 Highway Dr.
Newark • 368-1867

"Lessons In Loving"

Delaware Valley Bible Church

People take time for music lessons, tennis lessons, dance lessons, etc. Take time out for a few lessons in love.

Sunday Service Begins at 10:00 a.m. Peddler's Village, Christiana, 292-2070

Wednesday at 7:00 p.m. "Alternatives to Christianity" New Age Movement - Islam - Mormonism

Church Directory

PENACADER PRESBYTERIAN CHURCH Corner of Rt. 896 & Rt. 40 (302)731-8924 Worship: 10:30 AM Adult & Children: 9:15 AM Sunday School: 9:15 AM Youth Fellowship: 8:00 PM "A Church proud of its past with a vision for the future." John Oldman, Pastor	WESLEYAN CHURCH 708 Church Rd., Newark (302)737-5190 or (302)735-0413 Sunday School: 9:30 AM Morning Worship: 10:30 AM Evening Worship: 7:00 PM Wednesday: 10:30 AM, 7 PM Evangelism & Bible Study Pastor J. Thomas Pullin "A church that cares and strengthens your faith."
ST. ANDREWS PRESBYTERIAN CHURCH 200 Marrows Rd., Brookside Newark, DE 19713 Church School: 10:30 AM Worship: 10:30 AM Nursery Provided Robert M. Snable, Pastor	THE NEWARK UNITED CHURCH OF CHRIST 207 E. Delaware, Newark (302)737-4711 Worship: 9:30 AM Sunday School: 11:00 AM Child Care Provided Peter Wells, Pastor
FIRST CHURCH OF CHRIST SCIENTIST Delaware Ave. & Helms St. Newark, DE Sunday Service: 10:00 AM Sunday School: 10:00 AM Wednesday: 7:30 PM Testimony Service: 7:30 PM Reading Room: 10 AM Noon All Are Welcome-Child Care Provided	SALEM UNITED METHODIST CHURCH 469 Salem Church Rd. (302)738-4822 Worship Services: 8 & 10:30 a.m. Sunday School & Adult Classes: 9:15 a.m. Nursery & Children's Church Available Donald J. Hurst, Pastor Richard G. Pyle, Asst. "Catch the Spirit"
ST. JOHN'S EVANGELICAL LUTHERAN CHURCH WELLS 135 S. Old Baltimore Pike Christiana, DE 19702 Worship: 9:00 a.m. Sunday School & Bible Classes: 10:30 a.m. Nursery Provided Handicap Accessible Dale R. Schultz, Pastor	PRaise ASSEMBLY 696 Old Baltimore Pike, Newark UAW Local 1183 Sunday: 9 AM & 5 PM Wednesday: 7 PM Family Night (Youth Group, Royal Rangers, Missions, & Rainbows) Paul H. Walters, Pastor
FIRST PRESBYTERIAN CHURCH 292 West Main St. Newark Sunday School for all ages: 9:15 a.m. Worship Service: 10:30 a.m. Youth Fellowship: 7:00 p.m. Nursery Provided - Ramp access for the handicapped Rev. Barry Dawson, Pastor	EVANGELICAL CHRISTIAN CHURCH 318 Delaware Ave., Newark 738-0620 Sunday: 9:00 a.m. Sunday School 10:30 a.m. Morning Worship 8:00 p.m. Evening Worship Wednesday: 7:30 p.m. Prayer Meeting 7:00 p.m. Youth Meeting John Stratawaki, Pastor
AGAPE FELLOWSHIP (302)738-5907 A Spirit filled local expression of the Body of Christ Sunday Worship: 10 AM at Howard Johnson's, Rt. 896 & I 95 Wednesday Home Meeting: 7:30 PM	FAITH LUTHERAN CHURCH Now Worshiping at "Mother Hubbard's Day Care Center" Rt. 896, just South of Glasgow H.S. (302)731-7938 Sunday School: 9:15 a.m. Worship: 10:30 a.m.
FIRST ASSEMBLY OF GOD 129 Lovett Ave., Newark, DE 368-4275 731-8231 Home Church Our services for this week are: Sunday: 9:30 AM Bible Study Hour, Classes for All Morning Worship, Toddler's Church, Jr. Church & Teen Church: 10:40 AM Evening Service: 7:00 PM Thomas Lazer, Pastor	RED LION UNITED METHODIST CHURCH 1545 Church Road Bear, DE 19701 (located at the intersection of Rt. 7 & 71) 834-1888 Rev. Norman L. Fournier, Pastor Sunday School: 9:30 Ladies 2 adult: 11:00 Morning Worship: 11:00 Nursery available Youth Fellowship: 8:00 Wednesday Night Bible Study: 7:15
THE FELLOWSHIP Meeting at YWCA 318 S. College Ave. Newark, DE 737-3763 • 738-5828 Sunday Bible Classes: 9 a.m. all ages Worship Service: 10 a.m. Nursery available "Sharing Christ in Mutual Ministry" All Welcome	GLASGOW CHURCH OF THE NAZARENE Four Season's Pavilion 896 & Four Season's Pkwy. Newark, DE (302)738-6483 Sunday School: 9:30 AM Morning Worship: 10:30 AM Evening Worship: 8:00 PM Wednesday Bible Study: 7:00 PM Grove C. Deskins, Pastor
OUR REDEEMER LUTHERAN CHURCH Johnson at Augusta Ches Hill Est., Newark (302)737-6176 Sunday School and Bible Classes: 9:00 AM Divine Worship: 10:00 AM Summer Worship: 9:00 AM Holy Communion: 1st & 3rd Sunday Carl H. Kruelle, Jr., Pastor	ST. NICHOLAS EPISCOPAL CHURCH Chestnut Hill Rd. & Old Newark Rd. Newark, DE • 368-4555 Holy Eucharist: 9:30 AM Christian Ed for all: 11:00AM Handicapped Accessible & Nursery The Rev. Kay Scobell, Vicar "The Little Church with the Big Heart" Growing in the Spirit
CALVARY BAPTIST CHURCH 215 E. Delaware Ave. Newark 368-4904 SUNDAY Sunday School: 9:45 a.m. Morning Worship: 11:00 a.m. B.Y.F.: 8:30 p.m. WEDNESDAY Fellowship Dinner: 5:45 p.m. Bible Study Groups: 6:45 p.m. Choir Rehearsal: 7:45 p.m. NURSERY AT ALL SERVICES DAN MACDONALD, PASTOR	NEWARK UNITED METHODIST CHURCH 85 E. Main St., Newark 302-368-8771 All Welcome Worship 8:30, 9:30 a.m., 11:00 a.m. Church School 9:15 & 11 a.m. (nursery - adult) Clifford A. Armour, Senior Pastor John Patrick Colatch, Campus Pastor • Broadcaster WNRK 1290 AM

TO ADVERTISE CALL: 737-0724 - CHANGES MUST BE MADE BY 12 NOON FRID.

FRIDAY

6

- **Newark Senior Center**, 9, bowling at Blue Hen Lanes; 9:30, shopping; 10, Signing Group; 12:15, movie; 1:30, Newark Senior Players.
- **Oldies dance and beef and beer**, 8 p.m., Mill Creek Fire Company, 3900 Kirkwood Highway, Wilmington, sponsored by the ladies auxiliary. Music, cash bar. \$10 in advance, \$12 at the door. Call 998-8198.
- **Celebrity Waiters Dinner Dance**, to benefit the American Lung Association of Delaware, Brandywine Country Club. For details, call 655-7258.

SATURDAY

7

- **American Heart Association Turkeywalk**, 9 a.m., Bellevue State Park, Wilmington. A 10-kilometer jaunt led by Rob Sweetgall of Newark. Walkers will solicit pledges from sponsors. For information or a sponsor form, call 654-5269.
- **Old Fashioned Days in Hopewell**, 10 a.m. to 4 p.m., Hopewell and Lower Hopewell roads in Hopewell, Pa., two miles outside Oxford. At 11:30 there will be a spelling bee for students in grades two through five and a horseshoe pitching contest for adults. Horseshoe entry fee is \$2 and the winner will take half the pot. There will be gun firing demonstrations at 12:30 and 3:30, children's wooden boat racing at 2:30 and teddy bear judging at 3. Teddy bears will compete in the most loved, best dressed, smallest stuffed, largest and funniest categories. For teddy bear contest information, call (215) 932-3832. There will be ample free parking.
- **Conrad-Dickinson Alumni Football Game**, 11:30 a.m., Dickinson High School, Milltown Road, near Newark. The Dickinson band will perform at halftime. Admission is \$3 for adults, and proceeds benefit the Dickinson Scholarship Fund. A post-game dance will be held at 8 p.m. in St. Matthews Hall. Tickets cost \$15. Call 999-9263.
- **Kite Day**, 10 a.m. to 2 p.m., Walter S. Carpenter State Park, Del. 896, north of Newark. There will be an awards ceremony at 1 p.m. with prizes in various categories. Free. For details, call 571-3398.
- **Ward Foundation Decoy Exhibition**, 10 a.m. to 8 p.m. today and 10 a.m. to 4 p.m. Sunday, Wicomico Civic Center, Salisbury, Md. \$4 adults, \$3 senior citizens and students.

□ **Registration deadline**, Delaware Museum of Natural History's "Free Fall" children's weekend workshop to be held 1-3 p.m. Oct. 14. The programs are for youths ages 8-12. Fee is \$7. For details, call 658-9111.

SUNDAY

8

- **Delaware Nature Society Harvest and Crafts Festival**, 11 a.m. to 5 p.m., Ashland Nature Center, Brackenville Road, near Hockessin. There will be performances by the Nanticoke Powwow Dancers, a cow to milk and a presentation by Delaware Dairy Princess Shelley Tucker, pony rides, cider pressing and applebutter making. \$2. For details, call 239-2334.
- **Fourth annual Gothic Gables and Fables**, children's day at Rockwood Museum, 610 Shipley Rd., Wilmington, 11 a.m. to 5 p.m. Featured will be storyteller Terese Colonna, the Mock Turtle Marionette Theater, folk musicians Peter and Wendy Young, crafts and games. Admission is \$3 for adults, \$2 for senior citizens, and \$1 for children 5-16. For details, call 571-7776.

MONDAY

9

- **Newark Senior Center**, 10, knitting. Learn to Bowl; 11, Bend and Stretch; 12:30, canasta; 12:40, bridge.
- **"The World of Baseball Scouting"**, lecture by Dr. Kevin Kerrane of the University of Delaware; 3:15 p.m., Polishook Hall, Brandywine campus of Widener University, U.S. 202, north of Wilmington. Kerrane, an English professor at the University, is an avid baseball fan and author of "Dollar Sign on the Muscle," a



All aboard! Reservations are now being accepted for Hagley Museum and Library's Saturday, Nov. 18 steam train excursion from Hagley's Soda House to Coatesville, Pa. Participants will ride the Wilmington and Western Railroad to a Lukens Steel plant, where they will tour the roll mills and electric furnaces. Tickets cost \$90 and include a buffet lunch at Lukens and a catered snack on the return trip. Children younger than 14 are not permitted. A pre-trip slide orientation will be held at 7 p.m. Thursday, Nov. 16 in the Soda House. For details, call 658-2400, extension 303.

work about baseball scouting which was excerpted in Sports Illustrated magazine.

- **Eater's Choice cholesterol control program**, free introductory meeting, 5 p.m., Union Hospital of Cecil County, Elkton, Md. For details, call 731-0743, ext. 1276.
- **Newark Coin Club meeting**, 7:30 p.m., cafeteria, Faith City School, across from Christiana Mall. Admission is free. There will be a hobby update and refreshments.

TUESDAY

10

- **Newark Preschool Story Hour**, 10:30, 2 and 7, Newark Free Library, 750 Library Ave. Story hour is designed for children ages 3½ to 6. For details, call 731-7550.
- **Newark Senior Center**, 9, bowling at Blue Hen Lanes; 10, Bible study; 12:30, 500, shuffleboard, Tuesday After Lunch program on

Delmarva Power Company's gas maintenance plan; 12:45, beginner's bridge; 1, appliance repair.

- **Arthritis self-help course**, six week program begins 1-3 p.m. today, Union Hospital of Cecil County, Elkton, Md. For details, call 731-0743.
- **"Red Clay Valley Successes and Concerns"**, lecture by Robert G. Struble Jr., president of the Red Clay Valley Association, and Dr. Nancy Sawin, Hockessin historian, 7:30 p.m., auditorium, Cokesbury Village, Hockessin.

WEDNESDAY

11

- **Newark Senior Center**, 9, chess; 10, art class, needlepoint, quilting; 12:30, pinocle, bazaar meeting; 12:45, bingo.
- **American Association of Retired Persons Newark Chapter 3517**, meeting, 1 p.m., St. Nicholas Episcopal Church, Old Newark Road and Chestnut Hill Road. There will be a presentation by a representative of the Academy of Lifelong Learning. Refreshments will be served. For details, call 368-3169.
- **American Lung Association family asthma program**, 7 p.m. tonight, Oct. 18 and Oct. 25, Western Branch YMCA, Kirkwood Highway, Newark. The program is designed for children ages 6-12 and their parents. For details, call 655-7258.

THURSDAY

12

- **Newark Senior Center**, 9, foot clinic; 10, ceramics, discussion, Choral Group; 10:15, Rainbow Dinner Theatre; 12:30, duplicate bridge, membership meeting; 1:15, dancing; 1:30, Scrabble; 2, seminar on better retirement living.

- **American Heart Association Culinary Hearts Kitchen**, cooking program for low calories, fat and cholesterol, 7 p.m. tonight and Oct. 19, Oct. 26, and Nov. 2, Jewish Community Center, Garden of Eden Road, Wilmington. The course will be taught by Marianne Carter of AHA and Delores Redo of The Garden of Eating Hockessin. For details, call 478-5660.
- **Delaware Calligraphy Guild**, monthly meeting, 7 p.m., Brandywine High School. Featured subject is graphic design. For details, call 658-2777.

FRIDAY

13

- **Annual fall festival**, 9 a.m. to 5 p.m., Marydale Retirement Village, 135 Jeandell Dr., just off Salem Church Road near Christiana High School. The festival will feature handmade crafts, attic treasures, baked goods and children's games.
- **Newark Senior Center**, 9, bowling at Blue Hen Lanes; 9:30, shopping; 10, Signing Group; 12:15, movie; 1:30, Senior Players.

SUNDAY

15

- **Tri-State Bird Rescue and Research Art Exhibit**, 1-6 p.m., Tri-State rescue center, 110 Old Possum Hollow Road, off Newark's Possum Park Road. Local wildlife artists and carvers will display their works and an original work by George Sandstrom will be given away in a raffle. Admission is \$2. Children younger than 12 will be admitted free. For information, call 764-3740 or (215) 388-6594.

Specialists Are Our Specialty.

From allergists to urologists—and all the medical specialties in between—you can count on Health Hook-Up. We're the free physician referral service of St. Francis Hospital, the Hospital recently rated as providing the highest level of patient satisfaction ever recorded by a respected national research firm. Call weekdays from 8:30 a.m. to 5 p.m.

Health
Hook-Up
421-4180

**ST FRANCIS
HOSPITAL**
Wilmington, Delaware

SUNBRITE PRODUCTS INC.

MANUFACTURERS OF
FINE PVC CASUAL
FURNITURE AND
CUSTOM CUSHIONS

Home • Boat • Patio • Pool



1ST ANNUAL PARKING LOT SHOWROOM CLEARANCE SALE

October 7th-8th
10:00 am-6:00 pm

SAVE UP TO
60% OFF LIST

On In Stock PVC
Furniture & Accessories

IN-STOCK
REPLACEMENT
CUSHIONS & SLINGS
25% OFF

5-PIECE PVC
GROUPINGS

With Cushions
STARTING AS LOW AS
\$350.00

MATCHING
UMBRELLAS
\$85.00

In Stock Only

SHOWROOM MERCHANDISE
AVAILABLE PRIOR TO
SALE. ALL ORDERED
FURNITURE AND CUSHIONS
35% OFF UP TO AND
INCLUDING DAY OF SALE

NEXT TO STATE LINE LIQUORS
Elkton Rd. (Rt. 279)
Elkton, MD
(301) 392-3869

October Shoe Fest for Women

20% off reg. price

Casual, Dress Shoes, Leather Boots & Sneakers from our Fall Collection for Women. A wide Selection from

- EASTLAND
- ROCKPORT
- REEBOK
- AIGNER
- & MORE...

Storm's Women's Dept.
Guaranteed Competitive Prices

Market St. Mall • Midway Plaza • Concord Mall • Christiana Mall • Progress Plaza • Jervis Mall

SHARE EXPERIENCES OF YOUR NEIGHBORS

The Special Speakers Series of the Christina School District Adult Continuing Education Program brings to you one evening programs with local persons who have interesting experiences to share.

THE ADVANCE MATERIALS REVOLUTION IN NEWARK R. BYRON PIPES

From superconductors to composites advanced materials will revolutionize our lives in years to come. These materials will provide new products such as computers which accurately predict the weather weeks ahead and commercial aircraft which fly anywhere on earth in two hours. These changes will require entirely new technology and knowledge not yet available. Right here in Newark the Center for Composite Materials is actively developing both the required engineers and the new technology to support manufacturing science in composite materials. The lecture will present the layman's view of composite materials and the unique approach developed at this University of Delaware facility. The presenter is internationally recognized in the composites field.

MONDAY, OCTOBER 16, 7-9 PM, FEE \$4

PALESTINIAN ISRAEL

JOHN COLATCH

The speaker will share his look at the plight of the Palestinians in Israel today from his visits to schools, government agencies, refugee camps and community leaders. The focus will be on the political, economic and human rights issues involving the Israeli and Palestinian peoples.

WEDNESDAY, NOVEMBER 1, 7-9 PM, FEE \$4

SOUTH AFRICA

CLIFFORD ARMOUR

Experience the contrasts between South Africa and its neighbor Zimbabwe through the eyes of the leadership of the ordinary people of each country as seen by one who met them in an intensive three week Sessions study tour.

MONDAY, NOVEMBER 13, 7-9 PM, FEE \$4

All Sessions Will Be At Newark High School.
Advance Registration Is Required. Register at
Newark High Room B-102, Monday Through
Thursday Evenings Between 6 and 9 p.m.

ATTENTION LOT OWNERS

turn-key as shown, \$35,638.00
3 bedroom, 1 bath 940 sq. ft.



TAK DEVELOPMENT, INC.
5205 West Woodmill DR. Suite 33
Wilm., DE 19808
366-0554

Decks • Porches • Additions Garages • New Homes Licensed • Insured • Free Estimates

Call Michael Grafton
302-834-3446



No Tricks,
Just Treats!

GLASSES
IN 1 HOUR

In Most Cases
Optical Lab on Premises

CIBA® EXTENDED WEAR CONTACT LENSES

Includes:

- Examination and follow up care
- One pair of contact lenses
- Sterilization kit and wearing instructions

\$99.00

Reg. \$149

New Patients Only - Expires Oct. 13, 1989

All other types of contact lenses Available
including Acuvue® Disposable Contact Lenses.

EYE WEAR Including Lenses & Frames

Receive a complimentary eye examination by our doctor of optometry

OR SAVE \$ 35.00

By bringing in a copy of your prescription from your present doctor

With Coupon - Offer Expires 10/31/89

Hours by Appt.
Convenient Evening Hours

EYE DOCTORS CENTER

Oxford Mall, Oxford PA.

From Newark - Rt. 896 N. to Rt. 1 So. to Rt. 10

(Only 20 min. from Newark)

(215) 932-2020 or (215) 932-2645

We Accept all Major Credit Cards

Checks accepted, most major insurance plans accepted incl. N.V.A., V.S.P., Metropolitan, HMO of PA., Del Valley, Blue Cross of PA and Univ. of Del.

* All examinations performed by State Licensed Optometrists

United Way of Delaware.

It Brings out the best in all of us...
...Generation to Generation.

SPORTS

October 5, 1989

Post Newspapers

1c

OOOOO! Newark, Glasgow fit to be tied

by Steve Canaday

Of the Post staff

DOVER — You can't lose if you don't let the other team score. You might not win, but you certainly can't lose.

Glasgow High's hard-hitting defense didn't defeat Dover, but it did keep the Senators from scoring as the two teams played to a 0-0 tie here Friday night.

"I can't say enough about the defense," Glasgow head coach Dave Scott said after the game. "Scotty Cressman and John Reinhold (defensive coordinators) just did a great job organizing the defense. I think we can defend anybody in the state. I really do."

Scott may be right.

The Glasgow defense proved

its mettle by shutting down in the Senators, Delaware's top-ranked team. They blanked Dover away from the friendly confines of Glasgow Stadium. What's more, in their first three games this year, the Dragon defense has relinquished only 13 points — less than a touchdown a game.

Dover coach Jim Oxford was impressed with the Dragons' defense.

"They came out and I think they played an extremely aggressive and spirited defensive ball game," he said. "My hat's off to Glasgow. They're going to give people fits."

Unfortunately for the Dragons, theirs wasn't the only defensive unit that showed up ready to play on Friday. The Senators defense also did a good job, shutting down Glasgow's option-oriented offensive attack.

With quarterback Shawn Money leading the option and tailback Pat Williams trailing, the Dragons had been able to knock off their first two opponents this season. But Dover's Coach Oxford was determined to stop Glasgow's option attack which has been the Dragons' offensive bread and butter so far this season.

"Going in, our pre-game plan was: No Option Tonight. I don't think there was an option tonight," he said.

"Glasgow had to go to a lead series with Williams, and they had a little success inside. But I think we fulfilled what we wanted to do in terms of defensive strategy."

The Senators held Pat Williams, Glasgow's burner at tailback, to only 71 yards on 30 carries — well under Williams' average in the first two games. They closed off Money's passing game as well. Money connected on only two of eight passes for a meager 15 yards. He was intercepted once and sacked four times.

At times on Friday, the Senators offense was its own worst enemy. On several important downs, the Dover offense committed costly penalties.

The Senators' most damaging offensive mistake came in the fourth quarter when an illegal motion penalty negated what looked to be a 57-yard pass play from quarterback Jason Brooks to halfback LaDell Chapman for a Dover touchdown.



Glasgow's Chumpeng Sengphuchanh beats Newark's Dennis Patrick to the ball during Dragon victory last week.

Photo/Robert Craig

'Jackets, Dogs in stalemate

by Steve Canaday

Of the Post staff

Going into Thursday's battle with Blue Hen Conference Flight A foe Brandywine High, Newark head coach Butch Simpson predicted the Bulldog defense would be tough.

He was right.

But Simpson's own defense was no slouch, either, and the team's battled to a hard-fought 0-0 tie.

Brandywine's four defensive linemen met the Yellowjacket backs in their own backfield all night and pressured Newark quarterback Rob Callahan almost every time he dropped back to pass.

"Their front four down people — I told everybody that I didn't like the match-up," Simpson said. "It's no surprise that they played the kind of defense that they did."

The defense that the Bulldogs played was mighty impressive. Their defensive squad tallied six sacks, gave up only 15 yards total rushing, and held Callahan to 6 of 21 passing.

Brandywine coach Tom Lapinski was happy with his team's defensive play.

See NEWARK/3c

See GLASGOW/3c

Glasgow boots Newark, 2-0

by Steve Canaday

Of the Post staff

Sure, the Glasgow High School Dragons wanted to stay undefeated. And you can bet that they didn't want to lose the first night soccer game in school history.

But the strongest motivator in Glasgow's 2-0 victory last week was the opponent, crosstown rival Newark.

"This is my last year," said Glasgow senior Mark Christie, who scored the Dragons' first goal with 1:40 left in the first half. "We just had to beat them."

Ben Adams scored Glasgow's second goal with about ten minutes remaining in the game.

"This is the first time we've beaten Newark since I've been here," Adams said after the game.

Even Glasgow's head coach, Bob Rutkowski, new to the team

this year, understood that it meant more for his players than just another victory.

"They wanted it," Rutkowski said of the win. "To my knowledge none of the kids on this team ever recall beating Newark. There's no recollection of beating Newark in soccer."

Now there is. The Dragons had no intention of losing to the Yellowjackets this time around.

"I think we played as a team exceptionally well," Rutkowski said. "The hustle was tremendous. We stopped Newark's game."

Glasgow set the tone of the game early, ripping several shots at Newark's keeper, Doug Rice, who managed to keep the Dragons off the board early by making several acrobatic saves.

But with 1:40 remaining in the first half, Christie found a cross from Bret Icenogle and sent it past Rice for a 1-0 halftime edge.

Glasgow's second score came

with 16:45 left in the game when Adams took a pass, maneuvered past several Newark defenders and sent a slicing shot into the lower right corner of the 'Jackets' net.

While the Dragons were finding and converting on scoring opportunities, their goalie, Skip Thorp, worked hard to keep Newark off the scoreboard.

Thorp had a number of saves but, most importantly, broke up Newark's crossing offense with his forays out of the goalmouth and onto the playing field.

"(Summer goalkeeping camp) improved my play a lot," Thorp said. "It gave me the ability to come off my line but still get back for the high loose balls."

"So far (this season), we've only had three goals scored against us, and all three have come on set plays. That says a lot for our defense," Thorp added.

While Thorp anchored the

defense from goal and Christie and Adams provided the scoring punch, other Dragons contributed heavily to the victory.

Center halfback Devrim Sari, an exceptionally talented player, controlled much of the midfield action for the Dragons. Defender Pete Thiravong, returning from knee surgery, repelled several Yellowjacket attacks.

Glasgow, a team that was overlooked by most of the pre-season prognosticators, raised its record to 5-0 overall and 3-0 in the Blue Hen Conference Flight A.

In the past week, the Dragons

have broken into the top ten in the state rankings, but Coach Rutkowski is not too concerned with early season polls.

"As far as I'm concerned," he said, "the only ranking that's important is the last ranking of the season. We've got a long way to go."



Photo/Robert Craig

Delaware coach Tubby Raymond vents his frustration during loss to New Hampshire.

New Hampshire stuns Delaware

by Steve Canaday

Of the Post staff

Following Saturday's humiliating 27-17 loss to the University of New Hampshire, Delaware coach Tubby Raymond decided to disguise himself as Henny Youngman.

"The one good thing about this ballgame was the team togetherness," Raymond said Monday during his weekly press conference. "The offense was as bad as the defense."

Ta-dun-dun!

Raymond was being facetious but he wasn't far from wrong. The Blue Hens played uninspired, sloppy football against their Yankee Conference opponent, and after winning their first three games impressively fell to a team that had dropped its first two contests this fall.

"If a team is comfortable with the situation that they're in, that lends itself to complacency," Raymond said. "It's a comfortable feeling that's negative in terms of getting ready to play."

The Hens may have been complacent Saturday. They certainly weren't ready to play.

The defense allowed the Wildcats to move the ball almost at will in the first half. New Hampshire sophomore quarterback Matt Griffin, who had not thrown a touchdown pass all season and who had fired three interceptions in the Wildcats' first two games, connected for two scoring passes in the first half against a shaky Blue Hen secondary.

"We just came out flat," defensive captain and free safety Mike McCall said after the game. "We were so high after

those first wins that last week in practice we just had a letdown. We're going to make mistakes, but I don't think the intensity was there."

After New Hampshire's premier tailback Norm Ford had staked the Wildcats to a 7-0 lead on a three-yard scoring run, Griffin connected for 17-yards with his wide receiver John Perry in the back of the end zone. Perry made a fantastic fingertip catch to give the 'Cats a 14-0 first quarter bulge.

Meanwhile, the Blue Hens sputtered offensively. Quarterback Bill Vergantino's fumble ended one drive. The next two series ended when third down New Hampshire sacks forced the Hens to punt the ball away. The Blue Hens fumbled away three more possessions in the first half, the last one on the Wildacts' one yard line as the

half expired.

"I'm a little disappointed," McCall said when it was over. "But I believe in this football team. I've been here a long time — five years — and I think we have a pretty good football team here. We're all disappointed, but still we know it's a long football season and we know we have a good team."

"We lost a football game, but we've lost them before," Raymond said. "Hopefully our football team will have learned something from going through this game."

"We're going to make sure we've got the X's and O's squared away," he said.

The Blue Hens will try to rebound this Saturday in Williamsburg against non-conference opponent William and Mary.

Top-ranked AInips Newark

The Newark High School volleyball team had beaten top-ranked A.I. duPont 15-10 in the first game.

Leading 13-12 in the second game, the Yellowjackets were only two points away from pulling off an upset victory over the favored Tigers.

That's when the wheels fell off the proverbial cart.

AI went on to take the second game 15-13, and had little trouble beating a flat Newark squad in the final game 15-3.

"I'm disappointed that we had them on the ropes and we let them go," Newark head coach Barb Apichella said after the match. "The showing in the third game was disappointing too. We shouldn't have let that second game go — that was the downfall."

The match-up of top ten teams promised some exciting volleyball action and in that regard neither team disappointed. But the pre-game expectations may have been tougher for the young Newark squad to shoulder than it was for the more seasoned Tigers.

"I think they were very pumped up," Apichella said of her team. "Even if I don't build the game up, it's a big rivalry and they build it up so in their own minds. They haven't played much. They haven't done much playing in tight situations. They have to learn how to win."

In the first game, it looked like the young Newark team knew the path to victory. Spurred on

by the serving of senior tri-captain Ami Holland, the 'Jackets rallied from a 10-7 deficit, winning the next eight straight points en route to the opening game victory.

Holland served for four of the final eight points, while sophomore Kim Burke served for the other four.

The second game saw five lead changes. It seemed that Newark would rally again for victory. Down 12-7, the 'Jackets recovered, scoring six straight points on the sharp serving of senior tri-captain Stephanie Leedle.

But the Tigers mounted a comeback of their own. Senior Chereese Scotton came into the game and served the last two Tiger points for a 15-13 AI victory.

The third game belonged entirely to the visiting Tigers, as they coasted to an easy 15-3 victory. The emotional second game seemed to have taken the wind out of Newark's sails, or perhaps the confidence out of the young team.

In the final game, Scotton led the Tigers with four service points, while Kim Miller had several powerful hits for kills.

Tigers' head coach Bill Yelsh was happy with his team's victory, but pointed out that both teams made mistakes in the match.

"We had chances to roll, but we kept missing key serves," he said. "Both sides were missing key serves."



Christiana goalie Tom Copeland makes diving save against William Penn.

Photo/Robert Craig

Penn kickers top Vikings, 1-0

by Steve Canaday

Of the Post staff

With 1:30 left to play in the second overtime, William Penn High School's Johan Christenson scored the game's only goal to beat Christiana 1-0 in Blue Hen Conference Flight A soccer action last week.

Christenson, a European foreign exchange student playing for the Colonials this season, headed teammate Steve O'Neal's re-start from just outside the Christiana penalty box past lunging Viking keeper Tom Copeland.

A mix-up by the Christiana defense left Christenson marked by a Viking halfback who gave up more than six inches in height to the Colonial forward.

In first half action, the Vikings played the ball on their offensive half for a majority of the time, but William Penn made offensive runs as well. Still, neither team mounted a real scoring threat and at the half the score remained 0-0.

The second half began much like the first, with Christiana dictating play but unable to capitalize with any real scoring opportunities. As the half wore on, play intensified as if both teams sensed that one goal — any goal — would be enough to win this tightly played defensive struggle.

Stan Brunson, the Vikings' talented sweeper, lifted several second half re-starts inside the Colonials' 18-yard line, but the William Penn fullbacks repelled each long Brunson kick.

Although both coaches substituted liberally as the second half unfolded, the physical nature of the game saw both teams tire in their effort to score.

The first real scoring opportunity came over halfway through the second half when Christiana's Alex Minor sent a shot toward the Colonial goal. But Minor's shot sailed over the top crossbar and Penn still held to the 0-0 tie.

Christiana's best two chances

winding down. With a little over two minutes to play, the Vikings' Mike Kadow hit a blistering left-footer toward the Colonial goal. But Penn keeper Mike Daugherty came up with a big save preserving the scoreless tie.

Then, as time expired, a final Christiana shot, a volley from Viking midfielder Keith Kendall seemed sure to make the upper right corner of the Colonial net but was also deflected by the diving Daugherty.

With neither team able to score in regulation, the game went into the first of two ten minute overtimes.

In the first extra stanza, the only offensive threat came when Christiana's Alex Minor sent a ball through to his brother, Kevin Minor. Kevin's shot went

came as regulation time was just left of the Colonial goal.

The second overtime saw William Penn's offense come alive. Penn's A.C. Carter corralled a short Copeland punt and took a shot that required Copeland to make a game-saving save. Moments later, Jeff Ganc's shot also forced Copeland to come up with a big save.

With time running out in the final overtime period, Christiana was called for bringing down a Colonial forward just outside the Viking penalty area, and the Colonials were awarded the indirect re-start. Steve O'Neal sent a head-high cross in front of the Vikings' goalmouth that Christenson deposited in the back of the net for the victory.

VOLLEYBALL

Christiana — (3-2 in Blue Hen Conference, Flight A, 4-2 overall) The Vikings were spiking this past week. Tamie Emerson and Brynn Hudson led Christiana past William Penn in straight games 15-8 and 15-12. Emerson had twelve kills and seven service points against the Colonials while Hudson had nine service points. The Vikings also got by Flight A opponent, Delcastle, in two games 15-9, 15-9.

Caravel — (2-2 overall) Downed Westtown (Pa.) and Sanford last week to even record.

Glasgow — (2-3 in BHC Flight A, 3-3 overall) Fell to Blue Hen rival Concord 15-8, 15-4, but salvaged week with a three game victory over conference foe William Penn last Friday.

St. Mark's — (1-2 in Catholic Conference, 2-3 overall) The Spartan spikers lost a heart-breaking three game match to conference opponent St. Elizabeth's. In another conference match-up St. Mark's fell to a talented Archmere team in two straight games, 15-9 and 15-5. Seniors Mia Papas and Julie Orpneck had five service points each in the losing effort.

Newark — (1-4 in BHC Flight A, 1-5 overall) The Yellowjacket had a tough week suffering losses at the hands of conference foes A.I. DuPont (see story) and Concord.

Hodgson — (1-5 overall) The Silver Eagles also battled through a tough week. Hodgson fell to Wilmington, Claymont, and Mt. Pleasant in volleyball action.

SPORTS FILE

Wrestling club Registration

The Glasgow High School-based Wolverine Wrestling Club is currently accepting registration for the 1989-1990 season.

The club is open to all interested youths, and will run midweight (fourth grade and below), junior (fifth through eighth

grades), and senior (ninth through twelfth grades) brackets.

The club meets 6:30-8 p.m. Mondays and Wednesdays at Glasgow High School.

Membership is \$20 for midweight and juniors, and \$5 for seniors. For more information call Frank or Ann Vettori at 368-8311.

REMEDY FOR A WORN-OUT ENGINE.



REPLACE YOUR OLD OUTBOARD WITH A BRAND NEW MERC.

1989 MERCURY ENGINES ☆ SALE PRICE

9.9 M - \$1378	70 ELPTO - \$4039
15 M - \$1485	90 ELPTO - \$4570
25 M - \$1810	100 ELPTO - \$5028
35 EO - \$2300	115 ELPTO - \$5225
40 ELO - \$2557	135 L - \$5968
60 ELO - \$3277	135 XL - \$6032

*Limited Supply Only On These Sale Prices

ManGar MARINE Inc.

5136 Dupont Hwy, Smyrna, DE 19977

(302) 653-8239

OPEN MON.-SAT. 8-5

"ON THE WAY TO THE BAY — WHERE SERVICE COUNTS"

MERCURY OUTBOARDS

Let The Legend Move You.

FALL CAR CARE SERVICE

<p>OIL & FILTER CHANGE WITH LUBE \$23.95 Car \$25.95 Truck</p> <p>• New oil (up to 5 qts. cars, 6 qts. trucks) • New Mopar® oil filter • Complete chassis lube</p> <p>• Check fluid levels • Special or additional oil weight required</p>	<p>ENGINE MAINTENANCE TUNE-UP \$39.95 4-Cyl \$43.95 6-Cyl \$53.95 8-Cyl</p> <p>• Installation of Mopar® Champion spark plugs • Adjustment of idle speed • Set timing • Inspection of emissions control system</p> <p>(Standard ignition and/or vehicles equipped with greater than two-barrel carburetors slightly higher. Non-Chrysler Motors vehicles may be higher.)</p>
<p>COOLING SYSTEM SERVICE \$27.95</p> <p>Price includes: • Inspection of hoses and belts • New Mopar® anti-freeze • System pressure testing</p> <p>• Complete cooling system flush (Chemical flush) • V-8 engines and additional parts and labor extra</p>	<p>WHEEL BALANCING WITH FREE TIRE ROTATION \$26.95</p> <p>Price includes balancing of all four wheels, any car, truck or van model. (Special wheels may be extra.)</p>

NEWARK JEEP-EAGLE, INC.

244 EAST CLEVELAND AVE.

NEWARK, DE 19711 • 302-731-0100

Mon-Tue-Wed-Thu-Fri — Open: 7:30 a.m. Close: 5:00 p.m.



FALL SALE

NO PAYMENTS OR INTEREST UNTIL NEXT SPRING!



October is the month to take advantage of special end-of-season discounts and get the top quality service and performance John Deere owners enjoy year after year...

COME IN TODAY!

Sale Ends October 31

ASK ABOUT OUR 0% FINANCING PROGRAM

SEE OUR GREAT PRICES ON RIDERS & WALK BEHINDS

Nothing Runs Like A Deere.

COOPER'S LAWN & HOME

2688 Pulaski Hwy. (Rt. 40 West Of Rt. 896)
 Glasgow, DE

(302) 834-0114

COOPER ENTERPRISES, INC.

Rt. 282 Just S. Of Chesapeake City
 CECILTON, MD

(301) 275-2195

Come In To Cooper Lawn & Home At Glasgow, Delaware, For Super Deals On White Lawn Tractors & Riders

WHITE OUTDOOR POWER PRODUCTS



LT-12 LAWN TRACTOR

- 12HP Briggs & Stratton I/C Engine
- 7 Speed CruiseMatic
- LT Drive
- 38" Certified
- TurboCut Deck
- Optional Twin Bag
- VacPac Collection System



WHITE INVENTORY SELL-OUT • SALE ENDS OCT. 31

KIRKWOOD SOCCER

□ Following are Kirkwood Soccer Club representative team results for the weekend Sept. 30-Oct. 1.

Northern Delaware Soccer League

□ Under-10 A Division: KSC '80 Jaguars 6, HSC Thunder 0.

Jamie Johnston and Eric Sherman each scored two goals for the Jaguars, and Peter Pacinelli and Alvin Brunswick also scored one apiece. It was a good game and keeps the Jaguars' streak rolling along. KSC '81 Power 1, Western Y Strikers 5. Although Power was defeated by an older more experienced team, they played a fast paced, good game. Danny DiGiacobbe scored for Power.

□ Under-10 B Division: KSC '80 Lazars 3, CSA Quakes 0. In a fast moving game with lots of action, Seth Young and Justin Natalie scored for the Lazars. Pradeep Mammen scored on a direct kick. Preserving the shutout were David Boyden and Seth Young. KSC '81 Force 0, Western Y Sting 2. KSC '81 Force 0, CDSA Volunteers 4.

□ Under-12 A Division: KSC '78 Dynamo 1, CSA Hawks 0. Michael Romanczuk scored the only goal on a 25-yard direct kick for the Dynamo. Matt Manlove was goalie for the first half, and Dave Owen saw lots of action in the second half to share the shutout. KSC '79 Wildcats 3, CSA Cougars 0. Scoring for the Wildcats were Brian Lenz, Joey Judica, and Todd Everett. Sharing the goal keeping were Joey Judica in the first half, and Brian Lenz and Tony Floravanti in the second. KSC '78 Tornado 0, Western Y Stars 6.

□ Under-12 C Division: KSC '79 Destroyers 7, CSA Rowdies 0. Kevin Calvey earned the shutout in goal for the Destroyers while Brooks Buckingham scored two goals. Also scoring were Robbie Gregory, Nick Meckley, Adam Augenblick, Michael Rainbolt, and Collin Carew. KSC '79 Destroyers 4, BSC Bengals 0. Corey Fagles kept his streak alive by scoring two goals for the Destroyers, and Collin Carew also scored. Preserving the shutout were Kevin Calvey and Brooks Buckingham in goal.

□ Under-14 A Division: KSC '76 Scorpions 1, NCCSA Force 0. Stephan Pill scored the only goal

for the Scorpions and Jay Harting played goal. KSC '76 Panthers 3, KSC '77 Flyers 1. Billy Nuneville, Corbin Kerrigan, and Zack Chipman scored for the

Panthers. In goal was Jay Judica. □ Under-14 C Division: KSC '77 Falcons 1, Cecil '77 Rebels 2. Scott Grier scored the only goal for the Falcons and David Marcus and Jeff Weaver shared goal keeping. KSC '77 Falcons 4, HSC Blizzard 0. Scoring for the Falcons were Brian Sauer, Phil Hall, Jeff Weaver, and Mike Schuh. David Marcus preserved the shutout in the goal.

Tri-County Girls' League

□ Under-19 Division: Kirkwood Wildcats 0, Lansdown 1.

□ Under-16 Division: Kirkwood Cougars 8, Brookline 0. The Cougars exploded with Maria Rosini, Tarryn McGee, and Robin Clayton each scoring two goals. Jana Withrow and Natalie Kleinfelter also scored one apiece. Sharing the shutout were Kim Burke and Christy Quietmeyer. Kirkwood Rebels 0, Lansdown 2.

□ Under-14 Division: Kirkwood Spirit 3, Greater Chester Valley 1. Scoring for the Spirit were Lindsay Rademaker, Jenn Filger, and Brittany Betts. Joy Lesnick was goalie. Kirkwood Diamonds 2, Greater Chester Valley 1. Jenny Gow scored for the Diamonds and Alyson Loveland assisted by Jennifer DePaul added the second goal. Anne Felten was the goal keeper.

□ Under-12 Division: Kirkwood Arsenal 5, Greater Chester Valley 0. Scoring two goals apiece were Katie Phipps and Kelly Walker. Erin Arruda also contributed a goal. Heather Moran earned the shutout in goal with the assistance of Kelly Walker.

Kirkwood In-House

□ Under-10: Falcons 0, Cyclones 1. The Cyclones scored on an opening kickoff run to record the win. Storm 1, Gunslingers 0. Andrew Kohari scored the lone goal for the Storm. Mark Rigney turned in an excellent goaltending performance for the Gunslingers. Aztecs 4, Hurricanes 0. Wildones 4, Tornado 0.

NEWARK

"I thought they played a superb ball game. All of them did a very fine job," he said.

But the 2-0-2 Bulldogs couldn't manage to get their offense on track against the Newark defense, either.

Newark's Blair Sokol and Jon Callens, at the tackle slots, helped cut down Brandywine backs Neil Lapinski and Tom Jarome all night long. Craig Wilson, a fill-in in a Newark secondary hit with several injuries, came up with two big interceptions for the Yellow-jackets.

"I'm actually surprised that we played the kind of defense that we did," Simpson said in a post-game interview. "Brandywine's been scoring a lot of points, maintaining ball control, and then breaking play-action passes against everybody and doing a really good job. So a tribute to our defensive team."

Both coaches commented on the physical nature of the game. Lapinski called it "a very intense ball game" with "a lot of hard hitting." Simpson said that physically, his team played its heart out. Still, Simpson was frustrated by what he called a lack of team maturity.

"I don't want to question the physical effort that these kids

GLASGOW

When asked about the call after the game, Oxford had no argument.

"It could have been a game winner right there, but it wasn't to be, that's all," he said. "The boy that scored the touchdown and caught the pass — he was the one that was moving. That was the step he got, I guess."

FOOTBALL

□ Caravel — (3-0 overall) The Buccaneers extended their unbeaten season to three games with a 39-6 trouncing of Perkiomen (Pa.).

□ St. Mark's — (3-1 overall) The Spartans sneaked past Elkton (Md.) by a 3-2 score (yes, it's a football score). James Sharpe blocked a Bob Rush punt out of the end zone for a 2-0 Elkton lead. But Rush atoned for his misplay, hitting a 23-yard field goal as time expired in the third quarter to make the difference in the one point victory.

□ Newark — (0-0-1 in Blue Hen Conference Flight A, 2-0-1 overall) Played to a scoreless tie against conference rival Brandywine Bulldogs. See story for details.

□ Glasgow — (0-0 in BHC

Flight A, 2-0-1 overall) Dragons and Dover Senators battled to a 0-0 draw last Friday night. See story for details.

□ Christiansa — (0-1 in BHC Flight A, 1-3 overall) Overpowered by William Penn 28-2 last Saturday. See story.

□ Hodgson — (0-1 in BHC Flight B, 1-3 overall) The Silver Eagles were shutout by Wilmington last Saturday. Hodgson gave up four first half touchdowns to four different Wilmington players (three rushing, one passing). The Hodgson defense recovered at the half, and although the offense failed to light the scoreboard, the defense held BHC Flight B Wilmington scoreless in the second stanza.

gave tonight," he said. "But if we don't combine smart football with physical effort we get 0-0 ties."

Simpson explained that he was not trying to take anything away from Brandywine. "They're a good football team. They keep you honest," he said. But he said it was frustrating to watch the offensive lapses that the 'Jackets displayed.

"There was some breakdown on every play," he said.

An apparent Newark score, a brilliant zig-zagging 60-yard run by split end Ivan Holland, was called back for illegal motion.

Several Callahan passes grazed the fingertips of Yellowjacket receivers, or were just plain dropped. Receivers ran inconsistent patterns. Offensive linemen missed cut blocks, and

maintaining in the game. Money attempted a 22-yard field goal. The kick had the distance, but sailed wide right.

The attempt surprised many of the Glasgow fans, who had never seen the Glasgow quarterback placekick before.

Scott explained that he had been searching for a placekicker

that forced Callahan to run for his life on passing downs.

"A very frustrating night, offensively," Simpson said, shaking his head.

"We thought our offensive line was one of our strong points. But a tribute to Brandywine. Those guys got off the ball. They came hard and they were in our backfield all night."

Offensive highlights were few and far between for either team. Brandywine's longest single gain of the night came on a pass play from quarterback Adam White to back Brian Valencia in the Bulldogs' opening series. The drive ended when a bad fourth down snap turned the ball over to the Yellowjackets.

Newark's deepest penetration into Bulldog territory came on their first series, when Brandywine penalties, including an illegal block after Newark had punted the ball away, allowed the 'Jackets to get to the 'Dogs 20. Newark's scoring hopes ended when Reggie Matthews picked off a Callahan pass in the Brandywine end zone.

Brandywine's deepest drive came in the fourth quarter when with the 'Jackets secondary in a prevent formation, Brandywine backs Lapinski and Jarome rushed for good yardage to the Newark 27.

since the first day of practice, with little luck.

"We'd been asking every day," he said. "Finally Shawn said, 'Hey, I can kick.' We didn't have time to fit him with a square shoe tonight, or he might have gotten that one (Money kicks straight on rather than soccer-style).

Will you come back to church if we promise not to throw the book at you?

At Kingswood church we believe that faith is an exploration — not a mandate, a journey — not a destination. Come join us this Sunday at 9:30 am as we open up the Good Book in Sunday School for all ages.

KINGSWOOD UNITED METHODIST CHURCH
300 Marrows Rd., Newark, DE 19713
302-738-4478

Come Share With Us!
Sunday School (all ages) 9:30 am
Sunday Worship 11:00 am
(Nursery Provided)

ALL SPORTS CLINIC OF DELAWARE



Walk-In Weekend Clinic for Sports Injuries
Dr. Michael J. Axe
Director
Dr. William A. Newcomb
Dr. David T. Sowa



Monday - Thursday
4:30-8:30 p.m.

Saturday
12:30-4:30 p.m.

Sunday
3:00-5:30 p.m.

731-2888

September thru November

Suite 225 • Medical Arts Pavilion
4745 Stanton-Ogletown Road
Newark, DE 19713

Operated By
Wilmington Orthopaedic Consultants, P. A.

We're closing in on a killer.

leukemia
society of america

WHEN YOU DEPEND
ON TOOLS, DEPEND ON

STIHL®

SAWS
STARTING AT
\$199.95

\$289.99
SAVE \$70.00



STIHL'S QUALITY CHAIN SAWS are manufactured with extreme care and understanding of human ergonomics/ Stihl engineers safety features in all Stihl chain saws including Stihl's Inertia Quickstop chain brake, Anti-vibration, A.N.S.I. approved safety saw chain, throttle interlock, Master control switch, extremely light-weight to super power ratio, and lifetime warranty electronic ignition. Stihl's most popular models are manufactured in the United States of America, Virginia Beach, VA.

NUMBER ONE WORLDWIDE

DEPEND ON
THESE STIHL
SERVICING
DEALERS:

Newark
Cooper Lawn &
Home Center
2688 Pulaski Highway
834-0114

Stanton
Leasure's Lawn &
Garden Equipment, Inc.
537 Main Street
992-8845

New Castle
Delaware Small Engine
Center, Inc.
95 Christiansa Road
328-8889

North East
Hallstrom Saw Service
2601 Pulaski Highway
287-8959

Cecilton
Cooper Enterprises, Inc.
Main Street
275-2195

Havre De Grace
Chasapeake Rent All
210 North Stokes Street
939-1729

OCTOBER IS
OPEN
HOUSE
MONTH
AT Pike Creek



VISIT US DURING OCTOBER AND
COME PREPARED TO PARTICIPATE
IN OUR FREE ACTIVITIES!

SCHEDULE FOR NEXT TWO WEEKS

Sunday, October 1	1-5 PM	Open Swim
Monday, October 2	7:00 PM	Gus Hoefling Seminar on Joint Release
Tuesday, October 3	All Day	Blood Pressure & Heart Rate Screenings
	10:45 AM	Fitness Center Tours
	7:00 PM	Beginner's Racquetball Clinic
Wednesday, October 4	7:00 PM	Dr. Brent Noyes Seminar on Shoulder Injuries & Rehabilitation
Thursday, October 5		DISCOVERY TOYS Exhibit and Sale from 9-11:30 AM and 4-8 PM
	9-10 AM	Parent / Child Swim Lesson Demo
Friday, October 6		FREE GUEST DAY
		DISCOVERY TOYS Exhibit & Sale from 9-11:30 AM and 5:30-7:30 PM
Sunday, October 8	1-5 PM	Open Swim
Monday, October 9	7:00 PM	Professional Storyteller for Children
Tuesday, October 10	6:00 PM	Dr. Michael Axe Seminar on Knee Injuries
	7:00 PM	Wallyball Clinic - Learn & Play
Wednesday, October 11	7:00 PM	EKTELON Racquetball Equipment Display
	7:00 PM	Dr. Rick McKay Seminar on Sports Medicine Pro Shop Sale Begins Today
Thursday, October 12		FREE GUEST DAY
	9:00 AM	Aerobics "Simply Put" Class for Beginners
	6:15 PM	Fitness Center Tours
	7:00 PM	Dr. Mark Schwartz Seminar on Spinal Health
Friday, October 13	7:00 PM	Inner-Tube Water Polo
Saturday, October 14	1:00 PM	Junior Racquetball Program Starts
	5:00 PM	Family Night with Hayride, Children's Stage Play and Food

The NEW
PIKE CREEK
FITNESS CLUB
4905 Mermaid Boulevard • Wilmington, Delaware 19808
(302) 239-6688

THE NEWARK POST
THE NEW CASTLE POST
THE SOUTH COUNTY COURIER
DELIVERED TO OVER 50,000 HOMES
WEEKLY IN NEW CASTLE COUNTY, DE

CLASSIFIED CONNECTION

OFFICE HOURS:
Monday - Friday, 8:30 AM - 5:00 PM
CALL (302) 737-0905
Saturdays - 9:30 AM - 1:00 PM
CALL 1-800-523-5397 (Chesapeake Publishing Co.)
DEADLINES: Tuesday, 11 AM

LEGAL NOTICE

IN THE COURT OF COMMON PLEAS FOR THE STATE OF DELAWARE
IN AND FOR NEW CASTLE COUNTY
IN RE: CHANGE OF NAME OF
SHERIDAN RAYNOR WHEATLEY
PETITIONER(S)
TO
RAY SHERIDAN WHEATLEY
NOTICE IS HEREBY GIVEN THAT SHERIDAN RAYNOR WHEATLEY intends to present a Petition to the Court of Common Pleas for the State of Delaware in and for New Castle County, to change his name to RAY SHERIDAN WHEATLEY.
William A. Wheatley
(Petitioner's)
Dated: Sept. 26, 1989
np10/5-3

PUBLIC NOTICE
The Board of Trustees of the University of Delaware will meet Wednesday, October 11, 1989, beginning at 1 p.m., at the University Visitors' Center, 913 Market Street, Wilmington. This special meeting of the full board is being held to consider and act upon a proposed issuance of bonds by the University and to receive an interim report of the Trustee Committee to Nominate a President, which may involve an Executive Session.
np9/28-2

NOTICE OF DIVORCE ACTION
TO: GEORGE A. MARTIN, Respondent
FROM: Clerk of Court - Divorce
New Castle County
SHERILL S. MARTIN, Petitioner, has brought suit against you for divorce in the Family Court of the State of Delaware for New Castle County in Petition No. 1023, 1989. If you do not serve a response to the petition on Petitioner's Attorney
KEVIN P. O'NEILL, ESQ.
1201 North King Street
Wilmington, DE 19801
or the petitioner if unrepresented, and the Court within 20 days after publication of this notice, exclusive of the date of publication, as required by statute, this action will be heard without further notice at Family Court.
Date Mailed: 9/22/89
np10/5-1

NOTICE OF DIVORCE ACTION
TO: DENVER LEE WATTS, Respondent
FROM: Clerk of Court - Divorce
New Castle County
GAIL STITZER, Petitioner, has brought suit against you for divorce in the Family Court of the State of Delaware for New Castle County in Petition No. 1488, 1989. If you do not serve a response to the petition on Petitioner's Attorney
RALPH F. KEIL
215 Trolley Square
Wilmington, DE
or the petitioner if unrepresented, and the Court within 20 days after publication of this notice, exclusive of the date of publication, as required by statute, this action will be heard without further notice at Family Court.
Date Mailed: 9/19/89
np10/5-1

LEGAL NOTICE
Estate of Mildred K. Campbell, Deceased.
Notice is hereby given that Letters Testamentary upon the estate of Mildred K. Campbell who departed this life on the 11th day of August, A.D. 1989, late of 3 White Clay Drive, Newark, DE, were duly granted unto Connie M. Rea aka Connie M. Thompson on the 8th day of September, A.D. 1989, and all persons indebted to the said deceased are requested to make payments to the Executor without delay, and all persons having demands against the deceased are required to exhibit and present the same duly probated to the said Executor on or before the 15th day of April, A.D. 1990, or abide by the law in this behalf.
Connie M. Rea aka Connie M. Thompson, Executor
206 E. Delaware Avenue
Newark, DE 19711
np 10/5-3

LEGAL NOTICE
Estate of Zola K. MacPhee, Deceased.
Notice is hereby given that Letters Testamentary upon the estate of Zola K. MacPhee who departed this life on the 11th day of August, A.D. 1989, late of 3 White Clay Drive, Newark, DE, were duly granted unto Halsey M. MacPhee on the 6th day of September, A.D. 1989, and all persons indebted to the said deceased are requested to make payments to the Executor without delay, and all persons having demands against the deceased are required to exhibit and present the same duly probated to the said Executor on or before the 15th day of April, A.D. 1990, or abide by the law in this behalf.
Halsey M. MacPhee, Executor
206 E. Delaware Avenue
Newark, DE 19711
np9/28-3

LEGAL NOTICE

IN THE COURT OF COMMON PLEAS FOR THE STATE OF DELAWARE
IN AND FOR NEW CASTLE COUNTY
IN RE: CHANGE OF NAME OF
Brian Joseph Dorsey
PETITIONER(S)
TO
Brian Joseph Blake
NOTICE IS HEREBY GIVEN THAT Brian Joseph Dorsey son of Bennie S. Blake Jr. and grandson of Beulah A. Blake intends to present a Petition to the Court of Common Pleas for the State of Delaware in and for New Castle County, to change his name to Brian Joseph Blake
Beulah A. Blake
Bennie S. Blake Jr.
(Petitioner's)
Dated: Sept. 18, 1989
np9/28-3

OCTOBER QUARTER SUPPLEMENTAL ASSESSMENT
The supplemental Assessment Roll for New Castle County and the City of Wilmington Property and School Taxes for the October Quarter of the 1989-90 tax year, may be inspected in the offices of the Assessment Division of the New Castle County Department of Finance, Third Floor, City/County Building, 600 French Street, Wilmington, from 9:00 a.m. to 4:30 p.m., Monday through Friday.
These Supplemental Assessments will become effective on October 1, 1989. Forms to appeal these Supplemental Assessments may be obtained from the Assessment Division at the address aforesaid and must be filed with the Assessment Division no later than 4:30 p.m. on October 31, 1989. The Board of Assessment Review of New Castle County will sit in the City/County Building to hear appeals from these Supplemental Assessments between November 1st and December 1st unless the Board continues the hearings, the exact dates and times of such hearings will be provided to the appellants in accordance with 9 Del. C. Sec. 8311.
np9/28-2

NOTICE OF DIVORCE ACTION
TO: RICHONDA A. HOGUE, Respondent
FROM: Clerk of Court - Divorce
New Castle County
JOHN J. HOGUE, III, Petitioner, has brought suit against you for divorce in the Family Court of the State of Delaware for New Castle County in Petition No. 1346, 1989. If you do not serve a response to the petition on Petitioner's Attorney
JOHN C.S. FRANK, ESQ.
125 E. Delaware Avenue
Newark, DE 19711
or the petitioner if unrepresented, and the Court within 20 days after publication of this notice, exclusive of the date of publication, as required by statute, this action will be heard without further notice at Family Court.
Date Mailed: 9/22/89
np10/5-1

IN THE COURT OF COMMON PLEAS FOR THE STATE OF DELAWARE
IN AND FOR NEW CASTLE COUNTY
IN RE: CHANGE OF NAME OF
KRISTINE MAUREEN THOMAS
PETITIONER(S)
TO
KRISTINE MAUREEN YOST
NOTICE IS HEREBY GIVEN THAT KRISTINE M. THOMAS intends to present a Petition to the Court of Common Pleas for the State of Delaware in and for New Castle County, to change her name to KRISTINE M. YOST
Kristine M. Thomas
(Petitioner's)
Dated: 9/27/89
np10/5-3

CITY OF NEWARK DELAWARE
MEETING NOTICE
On Tuesday, October 17, 1989, the Traffic Committee of the City of Newark will meet at 9:00 a.m. in the Public Works Office to discuss the following:
1. Special Residential Parking District - Swarthmore Drive and Susquehanna Circle.
2. Handicapped Parking - 6 Ethan Allen Court, City Hill Manor.
Any questions regarding the above topics may be directed to Arthur W. Fridl, Chairman, 366-7040, prior to the meeting.
np10/5-2x

IN THE COURT OF COMMON PLEAS FOR THE STATE OF DELAWARE
IN AND FOR NEW CASTLE COUNTY
IN RE: CHANGE OF NAME OF
Lauren Marie Strazzella
PETITIONER(S)
TO
Lauren Marie Raymond
NOTICE IS HEREBY GIVEN THAT LAUREN MARIE STRAZZELLA intends to present a Petition to the Court of Common Pleas for the State of Delaware in and for New Castle County, to change her name to LAUREN MARIE RAYMOND
Robin A. Raymond
(Petitioner's)
Dated: 9-12-89
np10/5-1

LEGAL NOTICE
Estate of Zola K. MacPhee, Deceased.
Notice is hereby given that Letters Testamentary upon the estate of Zola K. MacPhee who departed this life on the 11th day of August, A.D. 1989, late of 3 White Clay Drive, Newark, DE, were duly granted unto Halsey M. MacPhee on the 6th day of September, A.D. 1989, and all persons indebted to the said deceased are requested to make payments to the Executor without delay, and all persons having demands against the deceased are required to exhibit and present the same duly probated to the said Executor on or before the 15th day of April, A.D. 1990, or abide by the law in this behalf.
Halsey M. MacPhee, Executor
206 E. Delaware Avenue
Newark, DE 19711
np9/28-3

LEGAL NOTICE
Estate of Zola K. MacPhee, Deceased.
Notice is hereby given that Letters Testamentary upon the estate of Zola K. MacPhee who departed this life on the 11th day of August, A.D. 1989, late of 3 White Clay Drive, Newark, DE, were duly granted unto Halsey M. MacPhee on the 6th day of September, A.D. 1989, and all persons indebted to the said deceased are requested to make payments to the Executor without delay, and all persons having demands against the deceased are required to exhibit and present the same duly probated to the said Executor on or before the 15th day of April, A.D. 1990, or abide by the law in this behalf.
Halsey M. MacPhee, Executor
206 E. Delaware Avenue
Newark, DE 19711
np9/28-3

LEGAL NOTICE
Estate of Zola K. MacPhee, Deceased.
Notice is hereby given that Letters Testamentary upon the estate of Zola K. MacPhee who departed this life on the 11th day of August, A.D. 1989, late of 3 White Clay Drive, Newark, DE, were duly granted unto Halsey M. MacPhee on the 6th day of September, A.D. 1989, and all persons indebted to the said deceased are requested to make payments to the Executor without delay, and all persons having demands against the deceased are required to exhibit and present the same duly probated to the said Executor on or before the 15th day of April, A.D. 1990, or abide by the law in this behalf.
Halsey M. MacPhee, Executor
206 E. Delaware Avenue
Newark, DE 19711
np9/28-3

LEGAL NOTICE
Estate of Zola K. MacPhee, Deceased.
Notice is hereby given that Letters Testamentary upon the estate of Zola K. MacPhee who departed this life on the 11th day of August, A.D. 1989, late of 3 White Clay Drive, Newark, DE, were duly granted unto Halsey M. MacPhee on the 6th day of September, A.D. 1989, and all persons indebted to the said deceased are requested to make payments to the Executor without delay, and all persons having demands against the deceased are required to exhibit and present the same duly probated to the said Executor on or before the 15th day of April, A.D. 1990, or abide by the law in this behalf.
Halsey M. MacPhee, Executor
206 E. Delaware Avenue
Newark, DE 19711
np9/28-3

LEGAL NOTICE
Estate of Zola K. MacPhee, Deceased.
Notice is hereby given that Letters Testamentary upon the estate of Zola K. MacPhee who departed this life on the 11th day of August, A.D. 1989, late of 3 White Clay Drive, Newark, DE, were duly granted unto Halsey M. MacPhee on the 6th day of September, A.D. 1989, and all persons indebted to the said deceased are requested to make payments to the Executor without delay, and all persons having demands against the deceased are required to exhibit and present the same duly probated to the said Executor on or before the 15th day of April, A.D. 1990, or abide by the law in this behalf.
Halsey M. MacPhee, Executor
206 E. Delaware Avenue
Newark, DE 19711
np9/28-3

LEGAL NOTICE
Estate of Zola K. MacPhee, Deceased.
Notice is hereby given that Letters Testamentary upon the estate of Zola K. MacPhee who departed this life on the 11th day of August, A.D. 1989, late of 3 White Clay Drive, Newark, DE, were duly granted unto Halsey M. MacPhee on the 6th day of September, A.D. 1989, and all persons indebted to the said deceased are requested to make payments to the Executor without delay, and all persons having demands against the deceased are required to exhibit and present the same duly probated to the said Executor on or before the 15th day of April, A.D. 1990, or abide by the law in this behalf.
Halsey M. MacPhee, Executor
206 E. Delaware Avenue
Newark, DE 19711
np9/28-3

LEGAL NOTICE

IN THE COURT OF COMMON PLEAS FOR THE STATE OF DELAWARE
IN AND FOR NEW CASTLE COUNTY
IN RE: CHANGE OF NAME OF
Stefon Roberto Fakl
PETITIONER(S)
TO
Stefon Robert Coleman
NOTICE IS HEREBY GIVEN THAT Stefon Roberto Fakl intends to present a Petition to the Court of Common Pleas for the State of Delaware in and for New Castle County, to change his name to Stefon Robert Coleman
Tamish Coleman
(Petitioner's)
Dated: 21 Sept. 89
np9/28-3

IN THE COURT OF COMMON PLEAS FOR THE STATE OF DELAWARE
IN AND FOR NEW CASTLE COUNTY
IN RE: CHANGE OF NAME OF
MATHEW CHRISTOPHER TONER
PETITIONER(S)
TO
MATHEW CHRISTOPHER BAILEY
NOTICE IS HEREBY GIVEN THAT MATHEW CHRISTOPHER TONER intends to present a Petition to the Court of Common Pleas for the State of Delaware in and for New Castle County, to change his name to MATHEW CHRISTOPHER BAILEY
Karen L. Bailey
(Petitioner's)
Dated: 9/14/89
np9/21-3

NOTICE OF DIVORCE ACTION
TO: THOMAS CRAIG, Respondent
FROM: Clerk of Court - Divorce
New Castle County
MARGARET M. CRAIG, Petitioner, has brought suit against you for divorce in the Family Court of the State of Delaware for New Castle County in Petition No. 1546, 1989. If you do not serve a response to the petition on Petitioner's Attorney
NORMAN E. LEVINE, ESQ.
928 French Street
Wilmington, DE 19801
or the petitioner if unrepresented, and the Court within 20 days after publication of this notice, exclusive of the date of publication, as required by statute, this action will be heard without further notice at Family Court.
Date Mailed: 9/29/89
np10/4-1

NOTICE OF DIVORCE ACTION
TO: RICHONDA A. HOGUE, Respondent
FROM: Clerk of Court - Divorce
New Castle County
JOHN J. HOGUE, III, Petitioner, has brought suit against you for divorce in the Family Court of the State of Delaware for New Castle County in Petition No. 1346, 1989. If you do not serve a response to the petition on Petitioner's Attorney
JOHN C.S. FRANK, ESQ.
125 E. Delaware Avenue
Newark, DE 19711
or the petitioner if unrepresented, and the Court within 20 days after publication of this notice, exclusive of the date of publication, as required by statute, this action will be heard without further notice at Family Court.
Date Mailed: 9/22/89
np10/5-1

IN THE COURT OF COMMON PLEAS FOR THE STATE OF DELAWARE
IN AND FOR NEW CASTLE COUNTY
IN RE: CHANGE OF NAME OF
KRISTINE MAUREEN THOMAS
PETITIONER(S)
TO
KRISTINE MAUREEN YOST
NOTICE IS HEREBY GIVEN THAT KRISTINE M. THOMAS intends to present a Petition to the Court of Common Pleas for the State of Delaware in and for New Castle County, to change her name to KRISTINE M. YOST
Kristine M. Thomas
(Petitioner's)
Dated: 9/27/89
np10/5-3

CITY OF NEWARK DELAWARE
CITY COUNCIL PUBLIC HEARING NOTICE
OCTOBER 9, 1989 - 8 P.M.
Pursuant to Section 402.2 of the City Charter and Section 32-79 of the Code of the City of Newark, Delaware, notice is hereby given of a public hearing at a regular meeting of the Council in the Council Chamber at the Municipal Building, 220 Elktion Road, Newark, Delaware, on Monday, October 9, 1989, at 8 p.m., at which time the Council will consider and Pass the following proposed ordinance:
BILL NO. 89-38 - An Ordinance Amending Chapter 20, MV&T, By Prohibiting Left Turns from Casho Mill Road onto Elktion Road.
Susan A. Lambblack, CMC
City Secretary
np9/28-2

NOTICE OF DIVORCE ACTION
TO: GREGORY R. BAXLEY, Respondent
FROM: Clerk of Court - Divorce
New Castle County
SHARON A. BAXLEY, Petitioner, has brought suit against you for divorce in the Family Court of the State of Delaware for New Castle County in Petition No. 1594, 1989. If you do not serve a response to the petition on Petitioner's Attorney
MARY C. BOUDART, ESQ.
1020 Philadelphia Pike
Wilmington, DE 19809
or the petitioner if unrepresented, and the Court within 20 days after publication of this notice, exclusive of the date of publication, as required by statute, this action will be heard without further notice at Family Court.
Date Mailed: 9/25/89
np10/5-1

LEGAL NOTICE
Estate of Zola K. MacPhee, Deceased.
Notice is hereby given that Letters Testamentary upon the estate of Zola K. MacPhee who departed this life on the 11th day of August, A.D. 1989, late of 3 White Clay Drive, Newark, DE, were duly granted unto Halsey M. MacPhee on the 6th day of September, A.D. 1989, and all persons indebted to the said deceased are requested to make payments to the Executor without delay, and all persons having demands against the deceased are required to exhibit and present the same duly probated to the said Executor on or before the 15th day of April, A.D. 1990, or abide by the law in this behalf.
Halsey M. MacPhee, Executor
206 E. Delaware Avenue
Newark, DE 19711
np9/28-3

LEGAL NOTICE
Estate of Zola K. MacPhee, Deceased.
Notice is hereby given that Letters Testamentary upon the estate of Zola K. MacPhee who departed this life on the 11th day of August, A.D. 1989, late of 3 White Clay Drive, Newark, DE, were duly granted unto Halsey M. MacPhee on the 6th day of September, A.D. 1989, and all persons indebted to the said deceased are requested to make payments to the Executor without delay, and all persons having demands against the deceased are required to exhibit and present the same duly probated to the said Executor on or before the 15th day of April, A.D. 1990, or abide by the law in this behalf.
Halsey M. MacPhee, Executor
206 E. Delaware Avenue
Newark, DE 19711
np9/28-3

LEGAL NOTICE
Estate of Zola K. MacPhee, Deceased.
Notice is hereby given that Letters Testamentary upon the estate of Zola K. MacPhee who departed this life on the 11th day of August, A.D. 1989, late of 3 White Clay Drive, Newark, DE, were duly granted unto Halsey M. MacPhee on the 6th day of September, A.D. 1989, and all persons indebted to the said deceased are requested to make payments to the Executor without delay, and all persons having demands against the deceased are required to exhibit and present the same duly probated to the said Executor on or before the 15th day of April, A.D. 1990, or abide by the law in this behalf.
Halsey M. MacPhee, Executor
206 E. Delaware Avenue
Newark, DE 19711
np9/28-3

LEGAL NOTICE
Estate of Zola K. MacPhee, Deceased.
Notice is hereby given that Letters Testamentary upon the estate of Zola K. MacPhee who departed this life on the 11th day of August, A.D. 1989, late of 3 White Clay Drive, Newark, DE, were duly granted unto Halsey M. MacPhee on the 6th day of September, A.D. 1989, and all persons indebted to the said deceased are requested to make payments to the Executor without delay, and all persons having demands against the deceased are required to exhibit and present the same duly probated to the said Executor on or before the 15th day of April, A.D. 1990, or abide by the law in this behalf.
Halsey M. MacPhee, Executor
206 E. Delaware Avenue
Newark, DE 19711
np9/28-3

LEGAL NOTICE
Estate of Zola K. MacPhee, Deceased.
Notice is hereby given that Letters Testamentary upon the estate of Zola K. MacPhee who departed this life on the 11th day of August, A.D. 1989, late of 3 White Clay Drive, Newark, DE, were duly granted unto Halsey M. MacPhee on the 6th day of September, A.D. 1989, and all persons indebted to the said deceased are requested to make payments to the Executor without delay, and all persons having demands against the deceased are required to exhibit and present the same duly probated to the said Executor on or before the 15th day of April, A.D. 1990, or abide by the law in this behalf.
Halsey M. MacPhee, Executor
206 E. Delaware Avenue
Newark, DE 19711
np9/28-3

LEGAL NOTICE
Estate of Zola K. MacPhee, Deceased.
Notice is hereby given that Letters Testamentary upon the estate of Zola K. MacPhee who departed this life on the 11th day of August, A.D. 1989, late of 3 White Clay Drive, Newark, DE, were duly granted unto Halsey M. MacPhee on the 6th day of September, A.D. 1989, and all persons indebted to the said deceased are requested to make payments to the Executor without delay, and all persons having demands against the deceased are required to exhibit and present the same duly probated to the said Executor on or before the 15th day of April, A.D. 1990, or abide by the law in this behalf.
Halsey M. MacPhee, Executor
206 E. Delaware Avenue
Newark, DE 19711
np9/28-3

LEGAL NOTICE

NOTICE OF DIVORCE ACTION
TO: PERRY SHALOM PITKOW, Respondent
FROM: Clerk of Court - Divorce
New Castle County
DAWN C. S. A. RINI, Petitioner, has brought suit against you for divorce in the Family Court of the State of Delaware for New Castle County in Petition No. 1509, 1989. If you do not serve a response to the petition on Petitioner's Attorney
CAROLYN M. McNICIE, ESQ.
1700 Mellon Bank Center
919 Market Street
Wilmington, DE 19801
or the petitioner if unrepresented, and the Court within 20 days after publication of this notice, exclusive of the date of publication, as required by statute, this action will be heard without further notice at Family Court.
Date Mailed: 9/29/89
np10/4-1

NOTICE OF DIVORCE ACTION
TO: THOMAS CRAIG, Respondent
FROM: Clerk of Court - Divorce
New Castle County
MARGARET M. CRAIG, Petitioner, has brought suit against you for divorce in the Family Court of the State of Delaware for New Castle County in Petition No. 1546, 1989. If you do not serve a response to the petition on Petitioner's Attorney
NORMAN E. LEVINE, ESQ.
928 French Street
Wilmington, DE 19801
or the petitioner if unrepresented, and the Court within 20 days after publication of this notice, exclusive of the date of publication, as required by statute, this action will be heard without further notice at Family Court.
Date Mailed: 9/29/89
np10/4-1

NOTICE OF DIVORCE ACTION
TO: RICHONDA A. HOGUE, Respondent
FROM: Clerk of Court - Divorce
New Castle County
JOHN J. HOGUE, III, Petitioner, has brought suit against you for divorce in the Family Court of the State of Delaware for New Castle County in Petition No. 1346, 1989. If you do not serve a response to the petition on Petitioner's Attorney
JOHN C.S. FRANK, ESQ.
125 E. Delaware Avenue
Newark, DE 19711
or the petitioner if unrepresented, and the Court within 20 days after publication of this notice, exclusive of the date of publication, as required by statute, this action will be heard without further notice at Family Court.
Date Mailed: 9/22/89
np10/5-1

NOTICE OF DIVORCE ACTION
TO: MICHAEL REED, Respondent
FROM: Clerk of Court - Divorce
New Castle County
MASSIALA STUPE REED, Petitioner, has brought suit against you for divorce in the Family Court of the State of Delaware for New Castle County in Petition No. 1508, 1989. If you do not serve a response to the petition on Petitioner's Attorney
DARRYL K. FOUNTAIN, ESQ.
606 Market Street
Wilmington, DE 19801
or the petitioner if unrepresented, and the Court within 20 days after publication of this notice, exclusive of the date of publication, as required by statute, this action will be heard without further notice at Family Court.
Date Mailed: 9/26/89
np10/5-1

CITY OF NEWARK DELAWARE
CITY COUNCIL PUBLIC HEARING NOTICE
OCTOBER 9, 1989 - 8 P.M.
Pursuant to Section 402.2 of the City Charter and Section 32-79 of the Code of the City of Newark, Delaware, notice is hereby given of a public hearing at a regular meeting of the Council in the Council Chamber at the Municipal Building, 220 Elktion Road, Newark, Delaware, on Monday, October 9, 1989, at 8 p.m., at which time the Council will consider and Pass the following proposed ordinance:
BILL NO. 89-38 - An Ordinance Amending Chapter 20, MV&T, By Prohibiting Left Turns from Casho Mill Road onto Elktion Road.
Susan A. Lambblack, CMC
City Secretary
np9/28-2

NOTICE OF DIVORCE ACTION
TO: GREGORY R. BAXLEY, Respondent
FROM: Clerk of Court - Divorce
New Castle County
SHARON A. BAXLEY, Petitioner, has brought suit against you for divorce in the Family Court of the State of Delaware for New Castle County in Petition No. 1594, 1989. If you do not serve a response to the petition on Petitioner's Attorney
MARY C. BOUDART, ESQ.
1020 Philadelphia Pike
Wilmington, DE 19809
or the petitioner if unrepresented, and the Court within 20 days after publication of this notice, exclusive of the date of publication, as required by statute, this action will be heard without further notice at Family Court.
Date Mailed: 9/25/89
np10/5-1

LEGAL NOTICE
Estate of Zola K. MacPhee, Deceased.
Notice is hereby given that Letters Testamentary upon the estate of Zola K. MacPhee who departed this life on the 11th day of August, A.D. 1989, late of 3 White Clay Drive, Newark, DE, were duly granted unto Halsey M. MacPhee on the 6th day of September, A.D. 1989, and all persons indebted to the said deceased are requested to make payments to the Executor without delay, and all persons having demands against the deceased are required to exhibit and present the same duly probated to the said Executor on or before the 15th day of April, A.D. 1990, or abide by the law in this behalf.
Halsey M. MacPhee, Executor
206 E. Delaware Avenue
Newark, DE 19711
np9/28-3

LEGAL NOTICE
Estate of Zola K. MacPhee, Deceased.
Notice is hereby given that Letters Testamentary upon the estate of Zola K. MacPhee who departed this life on the 11th day of August, A.D. 1989, late of 3 White Clay Drive, Newark, DE, were duly granted unto Halsey M. MacPhee on the 6th day of September, A.D. 1989, and all persons indebted to the said deceased are requested to make payments to the Executor without delay, and all persons having demands against the deceased are required to exhibit and present the same duly probated to the said Executor on or before the 15th day of April, A.D. 1990, or abide by the law in this behalf.
Halsey M. MacPhee, Executor
206 E. Delaware Avenue
Newark, DE 19711
np9/28-3

LEGAL NOTICE
Estate of Zola K. MacPhee, Deceased.
Notice is hereby given that Letters Testamentary upon the estate of Zola K. MacPhee who departed this life on the 11th day of August, A.D. 1989, late of 3 White Clay Drive, Newark, DE, were duly granted unto Halsey M. MacPhee on the 6th day of September, A.D. 1989, and all persons indebted to the said deceased are requested to make payments to the Executor without delay, and all persons having demands against the deceased are required to exhibit and present the same duly probated to the said Executor on or before the 15th day of April, A.D. 1990, or abide by the law in this behalf.
Halsey M. MacPhee, Executor
206 E. Delaware Avenue
Newark, DE 19711
np9/28-3

LEGAL NOTICE
Estate of Zola K. MacPhee, Deceased.
Notice is hereby given that Letters Testamentary upon the estate of Zola K. MacPhee who departed this life on the 11th day of August, A.D. 1989, late of 3 White Clay Drive, Newark, DE, were duly granted unto Halsey M. MacPhee on the 6th day of September, A.D. 1989, and all persons indebted to the said deceased are requested to make payments to the Executor without delay, and all persons having demands against the deceased are required to exhibit and present the same duly probated to the said Executor on or before the 15th day of April, A.D. 1990, or abide by the law in this behalf.
Halsey M. MacPhee, Executor
206 E. Delaware Avenue
Newark, DE 19711
np9/28-3

LEGAL NOTICE
Estate of Zola K. MacPhee, Deceased.
Notice is hereby given that Letters Testamentary upon the estate of Zola K. MacPhee who departed this life on the 11th day of August, A.D. 1989, late of 3 White Clay Drive, Newark, DE, were duly granted unto Halsey M. MacPhee on the 6th day of September, A.D. 1989, and all persons indebted to the said deceased are requested to make payments to the Executor without delay, and all persons having demands against the deceased are required to exhibit and present the same duly probated to the said Executor on or before the 15th day of April, A.D. 1990, or abide by the law in this behalf.
Halsey M. MacPhee, Executor
206 E. Delaware Avenue
Newark, DE 19711
np9/28-3

LEGAL NOTICE
Estate of Zola K. MacPhee, Deceased.
Notice is hereby given that Letters Testamentary upon the estate of Zola K. MacPhee who departed this life on the 11th day of August, A.D. 1989, late of 3 White Clay Drive, Newark, DE, were duly granted unto Halsey M. MacPhee on the 6th day of September, A.D. 1989, and all persons indebted to the said deceased are requested to make payments to the Executor without delay, and all persons having demands against the deceased are required to exhibit and present the same duly probated to the said Executor on or before the 15th day of April, A.D. 1990, or abide by the law in this behalf.
Halsey M. MacPhee, Executor
206 E. Delaware Avenue
Newark, DE 19711
np9/28-3

LEGAL NOTICE

NOTICE OF DIVORCE ACTION
TO: SHERMAN B. JOHNSON, Respondent
FROM: Clerk of Court - Divorce
New Castle County
ROSYLN J. JOHNSON, Petitioner, has brought suit against you for divorce in the Family Court of the State of Delaware for New Castle County in Petition No. 1535, 1989. If you do not serve a response to the petition on Petitioner's Attorney
CHARLES J. KENNEDY, ESQ.
1212 French Street
Wilmington, DE 19801
or the petitioner if unrepresented, and the Court within 20 days after publication of this notice, exclusive of the date of publication, as required by statute, this action will be heard without further notice at Family Court.
Date Mailed: 9/28/89
np10/4-1

NOTICE OF DIVORCE ACTION
TO: CASSANDRA P. TOWSON, Respondent
FROM: Clerk of Court - Divorce
New Castle County
ROY D. ROSE, Petitioner, has brought suit against you for divorce in the Family Court of the State of Delaware for New Castle County in Petition No. 1536, 1989. If you do not serve a response to the petition on Petitioner's Attorney
CHARLES J. KENNEDY, ESQ.
1212 French Street
Wilmington, DE 19801
or the petitioner if unrepresented, and the Court within 20 days after publication of this notice, exclusive of the date of publication, as required by statute, this action will be heard without further notice at Family Court.
Date Mailed: 9/28/89
np10/4-1

NOTICE OF DIVORCE ACTION
TO: MICHAEL REED, Respondent
FROM: Clerk of Court - Divorce
New Castle County
MASSIALA STUPE REED, Petitioner, has brought suit against you for divorce in the Family Court of the State of Delaware for New Castle County in Petition No. 1508, 1989. If you do not serve a response to the petition on Petitioner's Attorney
DARRYL K. FOUNTAIN, ESQ.
606 Market Street
Wilmington, DE 19801
or the petitioner if unrepresented, and the Court within 20 days after publication of this notice, exclusive of the date of publication, as required by statute, this action will be heard without further notice at Family Court.
Date Mailed: 9/26/89
np10/5-1

CITY OF NEWARK DELAWARE
CITY COUNCIL PUBLIC HEARING NOTICE
OCTOBER 23, 1989 - 8 P.M.
Pursuant to Chapter 32, Article XX, Section 32-79 and Section 32-16(b)(5), Code of the City of Newark, Delaware, notice is hereby given of a public hearing in the Council Chamber, Newark Municipal Building, 220 Elktion Road, on Monday, October 23, 1989, at 8 p.m., to hear the request of Kiddle Consultants, Inc., on behalf of the Chryco Newark Federal Credit Union, for a Special Use Permit for the operation of a drive-in banking facility located on the north side of Elktion Road, west of the duPont Stine-Haskell Laboratory, to be developed as a drive-in credit union center and a mini-warehouse facility.
ZONING CLASSIFICATION - BL (BUSINESS LIMITED)
MI (GENERAL INDUSTRIAL)
OFD (OPEN FLOODWAY DISTRICT)
Susan A. Lambblack, CMC
City Secretary
np10/5,10/19

CITY OF NEWARK DELAWARE
CITY COUNCIL PUBLIC HEARING NOTICE
OCTOBER 23, 1989 - 8 P.M.
Pursuant to Chapter 32, Article XX, Section 32-79 and Section 32-16(b)(5), Code of the City of Newark, Delaware, notice is hereby given of a public hearing in the Council Chamber, Newark Municipal Building, 220 Elktion Road, on Monday, October 23, 1989, at 8 p.m., to hear the request of Kiddle Consultants, Inc., on behalf of the Chryco Newark Federal Credit Union, for a Special Use Permit for the operation of a drive-in banking facility located on the north side of Elktion Road, west of the duPont Stine-Haskell Laboratory, to be developed as a drive-in credit union center and a mini-warehouse facility.
ZONING CLASSIFICATION - BL (BUSINESS LIMITED)
MI (GENERAL INDUSTRIAL)
OFD (OPEN FLOODWAY DISTRICT)
Susan A. Lambblack, CMC
City Secretary
np10/5,10/19



202 Help Wanted

AAA-AVON-AAA FREE GIFT
This ad. Call Delores
301-836-3619 or 302-322-4268
or 1-800-284-6150.

ADVERTISING SALES
Community newspapers are
looking for dynamic self-
motivated sales reps. Good
communication skills and sell-
ing experience required. Salary
plus commission. Good bene-
fits. Send resume to:
THE POST NEWSPAPERS
153 E. Chestnut Hill Rd.
ATTN: Advertising Manager
Newark, DE 19713

ANSWERING SERVICE
Answering Service in Newark
needs Receptionist. Flexible
full-time or part-time hours
available. For more information
please call Monday thru Friday,
10am-3pm at 302-737-2164.

BURGER KING
Starting at \$5/hr. if you're avail-
able to work 7pm-midnight or
lunch Monday-Friday. We offer
1/2 price meals, free uniform, &
opportunity for advancement.
302-368-5346.

PLACERS
TEMPS & SEARCH
ANDDELAWARE
TECH

INVITE YOU
TO ATTEND
THEIR

5TH ANNUAL
CAREER
OPPORTUNITY
DAY

Saturday, October 7th
10:00am-3:00pm

DISCUSS YOUR
FUTURE WITH
REPRESENTATIVES
OF MAJOR
CORPORATIONS
SUCH AS:

AIG MARKETING
ALLSTATES DESIGN
DEVELOPMENT CO., INC.
AMERICAN EXPRESS
CENTURION BANK
BANK OF DELAWARE
THE BANK OF NEW YORK
(DELAWARE)
BLUE CROSS BLUE SHIELD
OF DELAWARE
CHASE MANHATTAN BANK
(USA), N.A.
CHEMICAL BANK DELAWARE
COLONIAL NATIONAL BANK,
USA
CORESTATES BANK OF
DELAWARE, N.A.
DELAWARE TECH
DELAWARE TRUST CO.
DISCOVER CARD SERVICES,
INC.
E.I. DUPONT DE NEMOURS
EDS
FCC NATIONAL BANK
FIVE STAR INDUSTRIAL
SERVICE, INC.
HERCULES INCORPORATED
HIMONT
HORIZON HOUSE/DELAWARE
INC.
ICI AMERICAS, INC.
IDS FINANCIAL SERVICES
INC.
J.P. MORGAN (DELAWARE)
JOHN HANCOCK FINANCIAL
SERVICES
LANXIDE CORPORATION
LOMAS BANK USA
MARYLAND BANK, N.A.
MEDICAL CENTER OF
DELAWARE
MEDLAB, INC.
MELLON BANK (DE)
METROPOLITAN LIFE
MIDATLANTIC NATIONAL
BANK/DELAWARE
THE NEWS JOURNAL CO.
PLACERS SEARCH
PLACERS TEMPS
PNC NATIONAL BANK
ROCKWELL ASSOCIATES
ROLLINS LEASING CORP.
UNIVERSITY OF DELAWARE
W.L. GORE & ASSOCIATES
WSFS
WILMINGTON FINANCIAL
GROUP
WILMINGTON TRUST

Co-Sponsored By:

PLACERS
TEMPS & SEARCH
ANDDELAWARE
TECH

TO BE HELD AT:
DELAWARE TECH
Stanton Campus
RT. 7 & CHURCHMAN'S RD
BRING YOUR RESUMES
TELL YOUR FRIENDS

CALL
737-0905
FOR QUICK
CLASSIFIED
RESULTS!!

202 Help Wanted

CAFETERIA WORKER
Hodgson Vo-Tech. 3-4 hours.
\$5.34/hr. Call 302-834-0990,
ext. 34.

CLERK/TYPIST needed for
purchasing dept. in major leas-
ing company. Send resume to
P.O. Box 8255, Newark, DE,
19714. Attn: Penny Hamilton.

COOK
Seeking experienced Line
Cook for fine dining. 3-11 shift.
Excellent wages, benefits &
working conditions. Apply at:
Christiana Hilton Inn
Personnel Office
220 Continental Dr.
Or Call 302-454-7203

COOKS
SALAD PREP
DISHWASHERS
Several full & part-time posi-
tions are currently open at St.
Andrew's School. Benefits
available for full-time positions.
Apply in person. 302-834-9301.

College Graduate with BS de-
gree willing to learn mushroom
business. Will train. Salary
commensurate with credentials.
Resumes may be sent to:
Kaolin Mushroom Farms, Inc.
649 W. South Street
Kennett Square, PA 19348

DELIVERY DRIVER Apply to
Glasgow Florist, 410 Peoples
Plaza, Glasgow, DE 302
834-1504.

DESK CLERK
8-4pm weekdays, part-time.
Apply in person:
Comfort Inn
1120 S. College Ave.
Newark, DE

DISCOVERY TOYS A home
based business selling toys
children & parents love. Ask
about a free kit. Call collect 301
262-2039.

FLOOR MAINTENANCE
15-25 hours per week. \$6/hr.
Retirees welcome. Call 302
678-3170. Code 325.

General
FALL INTO WORK!
-Kids Back in School?
-Need Flexibility?
-Changing Careers?

We prided ourselves on
quality people & service.
Come join the Olsen team.

WE OFFER:
• Longshort Term Assignments
• Pay the Week you Work
• Flexible Hours with Top Pay
• Free Word Processing Training
(to qualified applicants)
• Major Medical Ins. BCBS of DE

Call For Appointment Today
NEVER A FEE OR CONTRACT

OLSTEN
Temporary Services
284 E. Main St.
Newark, DE
302 738-3500
E.O.E. M/F/H

HAIRSTYLIST
Experienced. Needed immedi-
ately. Full or part time. 302
328-0182.

If you don't SELL AVON
PRODUCTS...
Here's some reasons WHY
YOU SHOULD!
High as 50% earnings on a
product that sells itself.
Create your own working
hours and be your own boss.
Orders delivered right to
your door at no charge.
Discounts on your own
Cosmetics, Beauty Aids,
Jewelry and Gift items.
Win fabulous gifts and
prizes.
Come join the family of Avon
Representatives.
You'll be glad you did!
Call after 5pm, 301-658-5958.

IMMEDIATE OPENING. For
Finance & Insurance person.
Should have good education,
banking or financial back-
ground helpful. Will train. Neat
appearance, able to work w/
people. All company benefits,
vacation, etc. Apply in person
at: Bayshore Olds/GMC, West
End of High Street, Elton.

LABORERS
Blacktop & concrete work
302-834-5305

MAINTENANCE
Hours 8-4pm. Apply in person:
Comfort Inn, 1120 S. College
Ave., Newark, DE.

Maintenance Person/Mechanic
Person needed with good ma-
chine shop training. Experi-
ence a plus. Apply in person to:
The Plasticoil Company
249 W. High St., Elton, MD

OFFICE COORDINATOR
Full-time position. Clerical skills
req'd. Need a bright, cheerful
disposition & be willing to learn.
Good pay/benefits. Interested?
Call 301-398-7707 or send
resume to P.O. Box 183, El-
ton, MD 21921.

OFFICE MANAGER/MEDICAL
Pediatric Group Practice in
Newark, DE seeks an experi-
enced manager for its growing
practice. Position entails finan-
cial management, personnel &
third party insurance. Ability to
organize & motivate staff is
essential. Send resume & sal-
ary desired to:
ELG
Healthcare Group
140 W. Germantown Ave.
Suite 200
Plymouth Meeting, PA 19462

Part-time for Catering Opera-
tion. Must be over 18 years old.
302-834-4739

PRODUCTION WORKERS
wanted. Full-time, good work-
ing condition. Most shifts avail-
able. Apply to:
The Plasticoil Company
249 W. High St., Elton, MD

202 Help Wanted

**RADIOLOGIC
TECHNOLOGIST**
Full & part-time positions avail-
able. Special weekend work &
pay options. Excellent benefits
package & Sign On bonus
available. Contact Union Hospi-
tal of Cecil County, Elton,
MD 301-398-4000, ext.5050.

**RESTAURANT
DISHWASHERS**
Full-time & Part-time evening
shift. No experience necessary.
Excellent wages, benefits &
working conditions. Apply at:
Christiana Hilton Inn
Personnel Office
220 Continental Dr.
Or Call 302-454-7203

RN/LPN Full or part-time for
operating room position. 2 yrs
experience in MED/SURG re-
quired. Must be MD licensed or
eligible. Contact Union Hospi-
tal of Cecil County, Elton, MD
301-398-4000, ext.5050.

RN/LPN Full-time, part-time positions
available in modern caring
nursing home facility. Excellent
benefits provided. Flexible
scheduling to meet your needs.
If interested, please contact
Newark Manor Nursing Home
at 302-731-5576 for
appointment.

**SALES
ASSOCIATE**
Sales Associate wanted to join
Catherine, a leading large size
specialist. Salary + commis-
sion. For interview, call Teresa,
302-999-0974.

SECURITY GUARDS
Bonus If Hired
All hours available, no experi-
ence needed. Male/female &
retired welcome. Top pay &
benefits. 302-368-3489.

**SERVICE STATION
ATTENDANT**
Start to \$7/per hr. plus commis-
sion & benefits. Full-time
1-9PM, overtime available. Call
302-368-3615 for appointment.

TELEMARKETERS
Immediate openings, easiest
program around! Part-time
flexible evening hours. Call
302-737-9605 after 3pm.

TELEMARKETING
Full & part time hours available.
\$5.00 per hour plus commis-
sion. Flexible hours. 302
836-0270.

TELEMARKETING
8-10 hours per week. Flexible
schedule. Experience pre-
ferred, but not necessary.
\$8/hr. + bonus. 302-453-7353.

TELEPHONE RECEPTIONIST
For busy message center. Full
& part time hours available on
all shifts. Call Monday thru
Friday, 10am-3pm at 302
454-9149.

TRACTOR TRAILER DRIVERS
Domino's Distribution is an in-
ternational company delivering
food products to our own
stores. We are a people
oriented company & have vac-
ancies for professional tractor/
trailer drivers. Our New Castle
DE distribution center offers:
•Excellent Benefits
•Competitive Weekly Salary
•Bonus Paid Every 4 Weeks
•Free Uniforms
•3 Day Work Week
•Advancement Opportunities
•Excellent Social Events
If you are a team player over 21
years old, have a Class C, safe
driving record with over
100,000 variable miles, &
want to be considered than we
would like to talk with you. Call
302-328-3030.

TYPIST
Part time evening work. 6 to 10
pm Monday, Wednesday and
Friday. Must be at least 18
years of age. Good typing
skills \$5/hr. Call Mr. Kelly,
(302) 731-2480. In the
evenings.

TELEMARKETERS
Welcome student, retirees,
moonlighters. Part time even-
ing work. 5 to 9:30, Monday thru
Friday. No Saturdays! \$7 to
\$10.00 to start. After 2 weeks
paid training. Clear speaking
voice a must. Must be at least
18 years old. Have own trans-
portation. Bonus paid if hired!
Call between 5 and 9:30 pm.
Monday thru Friday. Ask for Mr.
Kelly (302) 731-2480.

Wanted!
1. cleaning person. Once
weekly, references required.
Hours negotiable. Start im-
mediately! Phone 378-8974.

WELDER/FITTER
3yrs exp. Field work & valid
driver's lic. req'd. Call 8am to
noon, Mon-Fri. 302-453-8627.

306 Auto
PAXTON'S CAR CARE
BUFF & SHINE
Simonize Wax Specials
SMALL CARS \$25.
SMALL TRUCKS \$25.
LARGE CARS \$30.
LARGE TRUCKS \$30.
VANS \$50.

OPEN YEAR ROUND
301-287-3019
301-398-4077
Call For Appointment!

316 Cleaning Services
C & C Cleaning Res. & Com.
We custom tailor to your needs.
Compare our prices. Licensed.
302-836-3370.

320 Day Care
Farm Country Family Daycare
Has 2 openings part or full-
time. Located on Old County
Rd. Drop-ins welcome. 302
834-3486.
Lic#1500105500

Classified Sales Rep

CECIL WHIG NEWSPAPER
ELKTON, MARYLAND

■ Personal & Telephone Sales
■ Full Time Monday-Friday, 12:30-8:30 pm

REQUIREMENTS: 1 Year Sales Experience,
Confident, Organized, Energetic Personality &
Neat Appearance.

WE OFFER: Salary Plus Commission, Benefits,
Car Mileage & Some Expenses.

**FOR INTERVIEW APPOINTMENT,
CONTACT:**

Ginny Hodanics
(301) 398-3311

TAK MORTGAGE SERVICES, INC.

• FIRST MORTGAGES •
• SECOND MORTGAGES •
• LOW DOCUMENTATION •
• REFINANCE - CASH OUT •
• FIXED RATE HOME EQUITY •
• GRADUATED PAYMENTS •

• NO OBLIGATION FINANCIAL CONSULTATION •

take the guesswork out of home buying with our

• MORTGAGE PRE-APPROVALS •

5205 West Woodmill Drive, Suite 33

Wilmington, DE 19808

633-0562

KNOW BEFORE YOU GO



Hypothermia is the chill that kills.
Cold water chills

FIFTH ANNUAL

CAREER
OPPORTUNITY
DAY

OCTOBER 7, 1989

10 am - 3 pm

Delaware Tech

Stanton Campus

Rt 7 at Churchman's Road I-95 Exit 4N

Meet Executives From Top Local Corporations and Discuss Your Career Opportunities:

AIG Marketing
**Allstates Design &
Development Company, Inc.**
American Express
Centurion Bank
Bank of Delaware
The Bank of New York
(Delaware)
Blue Cross Blue Shield
of Delaware
Chase Manhattan Bank
(USA), N.A.
Chemical Bank Delaware
Colonial National Bank, USA
CoreStates Bank of
Delaware, N.A.

Delaware Tech
Delaware Trust Company
Discover Card Services, Inc.
E.I. DuPont de Nemours
EDS
FCC National Bank
Hercules Incorporated
Himont
Horizon House/Delaware, Inc.
ICI Americas, Inc.
IDS Financial Services Inc.
J.P. Morgan (Delaware)
John Hancock
Financial Services

Lanxide Corporation
Lomas Bank USA
Maryland Bank N.A.
Medical Center of Delaware
Mellon Bank (DE)
Metropolitan Life
Midatlantic National Bank
The News Journal Co.
Placers Temps & Search
Rockwell Associates
Rollins Leasing Corp.
University of Delaware
W.L. Gore & Associates
WSFS
Wilmington Financial Group
Wilmington Trust

CO-SPONSORED BY

**DELAWARE
TECH**

Delaware Technical & Community College
Georgetown ■ Dover ■ Stanton ■ Wilmington

PLACERS
TEMPS AND SEARCH

WILMINGTON, CHRISTIANA, TALLEYVILLE,
DOVER, EXTON, MEDIA

326 Electric Contractors

BUCKSON ELECTRIC
Residential & Commercial Ser-
vices. Licensed, bonded & in-
sured. Free Estimates. 302
328-3375.

J D ELECTRIC, INC.
Residential, commercial, com-
puter cable installation, indus-
trial services. Licensed,
bonded, insured. Free esti-
mates. Call 302 322-0964.

327 Entertainment

Free Bingo Bus Ride to St.
Rita's Saturday nights. Anyone
interested, please call Jose-
phine, 302 328-7380.

330 Extermination

Prompt Action
Termite & Pest Control
Free Inspections, Chimney
caps installed, rain gutters
cleaned. 301 658-5636

342 Home Improvement

AAAA
HOME IMPROVEMENTS
FREE ESTIMATES
Finish those small jobs now!
Painting, decks, additions, dry-
wall, electrical, plumbing, win-
dows, doors & trim. No job too
small. Call today, ask for Bill.
301 287-0164

ALL PHASES OF Construction
Work, Interior & Exterior. Kitchens,
Additions, Drywall,
R.J. Hinkle Construction Co.
302-378-0660

PAPERHANGERS
You buy the wallpaper, we
hang it. Free & non-pasted wall-
papering. Free estimates. Rea-
sonable rates. All work guaran-
teed. 302 836-0551.

LOVE

THEM

WITH

MILK

The NewArk Post Classified
Dept. will be glad to help you
write an ad that will sell your un-
wanted items. Give us a call to-
day, 737-0905.

C
L
A
S
S
I
F
I
E
D



5.75% FINANCING

Surrounded by Parkland

Beautiful 3 & 4 bedroom single-family homes offering energy efficiency for your comfort & convenience. Huge eat-in kitchens, fabulous master suites, spacious 2 car garages, in country setting surrounded by parkland.

CROSSAN POINTE

Prices starting at \$195,000

MODEL OPEN: Mon. Tues. Thurs. Sat. & Sun. 12-5 Wed. 12-8
DIRECTIONS: From Kirkwood Hwy. turn by All Saints Cemetery onto Pike Creek Rd., continue past St. Mark's School to Crossan Pointe.

738-5127

CEDAR BUILDERS, INC.



G and S CONTRACTING

398-9616

CDA BOND MONEY

- Have You Owned a Home within the Past Three Years?
- Do You Have Good Credit?
- Would You Like to Own a New Home?

Call Today to See if You Qualify!
1-301-398-9616

OUR SALES OFFICE IS LOCATED AT
133 Hearthstone Drive Elkton, MD
HOURS: Daily 10-6, Sat. 10-3, Sun. 12-4
or call for an evening appointment

GRAND OPENING

noon - 5p.m.



Preview prices start at \$159,900.*

Preview our plans for an exciting new community of 65 one acre to two acre homesites. Located on 128 acres in picturesque Southern Chester County, the Heritage Valley community provides a new standard in quality living at an affordable price. 38 acres of scenic meadow and stream valley open space are part of what sets this community apart from the rest.

The six dramatic home choices at Heritage Valley are designed for the lifestyle of the 90's and feature country estate or colonial exterior styling, spacious floor plans ranging from approximately 2100 to 2600 sq. ft., and amenities normally found in homes costing substantially more.

For more information and a chance to put pre-construction savings to work for you, call our Preview Center at (215) 932-0100.
Hours 12 to 5 daily.

DIRECTIONS: From Chadds Ford, PA, take Rt 1 South to Rt 796 South to Rt 896 South to right on Oxford-Elkdale Rd.
Go 2 1/4 mi to Preview Center on right.
From Newark, DE, take Rt 896 North through the Village of New London to Oxford-Elkdale Rd.
Go 2 1/4 mi to Preview Center on right.

*Prices subject to change without notice.
Broker participation welcome.



HEY KIDS, Deliver the Post call 737-0905

RISE SUN
LOCATION
Queen & Cherry Sts.
RISE SUN
301-658-4911
301-378-2901



MASON DIXON REALTY
BARRY MONTGOMERY BROKER



ELKTON OFFICE
Rt. 40 West of
Rt. 279
301-398-8444
302-738-7391



POTENTIALLY YOURS - 4 acres sur-
rounds this 3 BR home - we can show
you anytime. Attached garage, con-
crete drive, fireplace in den. Conve-
niently located in the country between
Union Church and Blue Ball. \$68,500



WON'T LAST LONG! - There's a lot to
be had for so little! 5 BR's, LR, DR, kit-
chen, family room, den on 1 acre for
\$85,000 - ADDITIONAL 4 ACRES
AVAILABLE



APT. BUILDING - (2) 1BRs, (1) 2 BRs
and 1 efficiency - all in good condition,
near Rising Sun in country. \$119,900.
Call PAULA GILLEY at RISING SUN of-
fice or home (301-378-3208)



LIVE IN ONE, RENT THE OTHER
One side has 2 BRs, 2 1/2 baths, other
side has 3 BRs, 1 1/2 baths. All have LR,
kitchen, heat pump/central air, ap-
pliances. Only 4 years old and very
popular rentals. \$118,000. Call PAULA
GILLEY at RISING SUN office or home
(301-378-3208)



LOCATION - LOCATION - LOCATION
and UNIQUE - 1300 sq.
ft. bilvel on 1/2 acre in Chippendale.
NEW CONSTRUCTION - 3 BRs, 2 full
baths, 2 car attached garage and much
more. Call FAY HUBBERT at ELKTON
office for more information.



PRETTY WONDERFUL - 1.4 acres
surrounds this new 3 BR rancher with
full basement, garage, brick fireplace,
and much more. Spectacular view, heat
pump/central air - come see. \$121,900.
Call PAULA GILLEY at RISING SUN of-
fice or home (301-378-3208)



VICTORIAN COUNTRY - Quiet set-
ting surrounded by farmland on 2 acres,
featuring high ceilings, fireplace in LR,
large porch, 5 BRs, 1 1/2 baths. Hard-
wood floors throughout. \$139,500. Call
BILL SNYDER at RISING SUN office or
home (301-658-4987)



MOBILE HOMES
WE HAVE A LIST OF SEVERAL
MHS ON THE MARKET. CALL
OUR OFFICES FOR A LIST -
TELLING YOU HOW MANY BRs,
LOCATIONS - (SOME HAVE LOTS
INCLUDED) THEY ARE LOCATED
ON PRIVATE LAND, IN MH
PARKS, IN MH SUBDIVISIONS -
CREATIVE FINANCING
AVAILABLE TO QUALIFIED
BUYERS.



PORT DEPOSIT DUPLEX - \$85,000
for entire property. 4 BRs one side, 2
BRs on the other side. ALSO, we have
several opportunities in Port Deposit -
great ideas for the investor! Call LINDA
ROGERS at ELKTON office or home
(301-398-8175)

LAND & BUILDING LOTS

DE LA PLAINE - Wooded
corner lot, town water &
sewer. Bring your
houseplans, or use the
builder's. \$39,900.

LIBERTY GROVE RD. - 18.9
acres \$135,000; 15 acres
\$98,500; HALF OPEN, HALF
WOODED.

RT. 222 - 3.10 acres 199' road
front \$80,000. Possible owner
financing.

CALVERT AREA - 2.5 acres
in FAIRFIELDS at the end of
a cul-de-sac street. \$12,000.

BARD CAMERON RD. - 2.4
acres \$32,500.

RUSSELL ROAD - 4.4 acres
- woods, 2 streams, perc ap-
proved, surveyed. \$45,000.

NEW BRIDGE RD. - 6 acre
cleared lot \$22,500.
Reduced \$19,900.

MCGLOTHLIN RD. - 108
acres - 392' of road frontage,
secluded, rolling ground,
60% wooded, balance is
open. Barn & shed on prop-
erty. water on property
\$265,000.

THEODORE RD. - 4.5 acres
\$58,500.

RT. 222 Perryville - Water &
sewer accessible to 2.9 acres
- woods \$48,000.

PROCTOR'S SEAT - Rolling
subdivision on Theodore Rd.
Various size lots - restrictions.
Plat in office showing lot sizes
from .75-1.81 acre. Priced
from \$31,500.

NEAR I-95 - Belle Hill Rd.
west side of Motel 6, 4 acres -
229' road frontage \$400,000.

THE BLUFFS - 5 lot mini
road subdivision 3 lots left -
winter view of Conowingo
Dam. 7.2 acres \$55,000, 4.7
acres \$50,000, 2.4 acres
\$38,500.

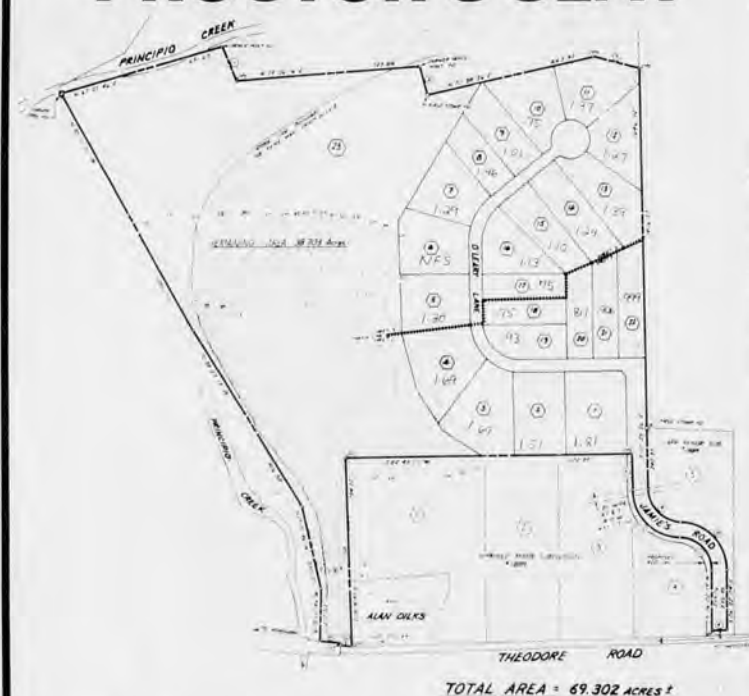
RUSSELL ROAD - 160' road
front 4.4 acres, perc'd,
surveyed, woods, 2 streams.
\$45,000.

NEAR FAIR HILL - Zoned
RM & R-1, Rt. 213 - mostly
wooded w/ stream. \$398,500.
ROUTE 40 & ROUTE 272
6 1/2 acres - zoned C-2 600'
frontage on Rogers Rd. 900'
on Rt. 476.

MASON-DIXON REALTY

Announces the Opening of

PROCTOR'S SEAT



Proctor's Seat is a new 21 lot subdivision with breathtaking views of the countryside. This new subdivision has lots ranging from .75 acres to 1.8 acres.

OPEN FOR INSPECTION
SUNDAY OCT. 8 & SUNDAY OCT. 15
1:00 to 4:00 P.M.

Sales agents will be available to answer your questions about Proctor's Seat.

DIRECTIONS: Take Theodore Road off Route 274 for approx 4 miles or take Theodore Road off Route 276 for approx. 3 miles.

RISE SUN
LOCATION
Queen & Cherry Sts.
Rising Sun
301-658-4911
301-378-2901



MASON DIXON REALTY
BARRY MONTGOMERY, BROKER



ELKTON OFFICE
Rt. 40 West of
Rt. 279
301-398-8444
302-738-7391

342 Home Improvement

Watkins Construction Company
Additions, alterations, renovations, & repairs. Free estimates. 302-378-4019.

346 Insurance

AUTO INSURANCE
PAYING TOO MUCH?
Call for a free quote.
Very competitive rates.
Call Butch Husfelt
302-378-8811

352 Landscaping

PRATT & CHURCH
LANDSCAPING
Complete landscaping services. Both residential & commercial. Free estimates & plans. Shrubs, trees, seeding, sodding. Fully licensed. MHIC# 31014. Call 301-928-5171.

355 Misc. Services

Typing in my home. Reasonable rates. Call Janet at 302-378-9118.

362 Painting

M.R. PAINTER
No Job Too Small/Int. Ext. FREE ESTIMATES
LOCAL REFERENCES
392-6906-Mike (anytime)

Painting
Interior Exterior
Wallpapering

Hang Removed
Residential Commercial
David Williams 302-737-5994

370 Roofing

KENNARD ROOFING
Honest work at honest prices. Scheduling for end of September & October. Free Estimates. 302-731-9386.

373 Sewing

Ladies Alterations
Coats, dresses, slacks, & bridal. Private appointment. Mrs. Schiller, 302-366-8241.

380 Upholstering

CUSTOM UPHOLSTERY
Reasonable rates. Fast service. Free estimates. 302-328-8893.

Let us wake up that antique bed with a custom-made mattress & box spring. We make any size. We also do custom upholstery & repairs. Furniture Clinic, 302-834-5162.



GENERAL MERCHANDISE

401 Animals

2 SIAMESE CATS-Male & female. 6 months old. \$50 each or both for \$80. All shots. 302-834-0459.

PERSIAN KITTENS-CFA reg. shots & wormed. Home-raised. Blue & Blue Cream. MF. 302-453-0257.

403 Antiques

22nd Annual Antique Show
Oxford Firehouse, Oxford, MD. (minutes from St. Michael's)
Saturday, October 7th
10am-8pm. Sunday, October 8th, noon-5pm. \$2.25 admission. \$2.00 with ad.

404 Appliances

GE Self-cleaning electric oven/stove. GE pots/scrubber built-in dishwasher. Excellent condition. 2 years old. Price negotiable. 302-456-0688.

Kenmore Portable Dishwasher. Butcher block top. Perfect condition. \$150. Call 302-453-9079.

408 Boats & Motors

PRIVATEER '83. 22ft. Center console. Dig Depth Finder. Compass. New 90hp Johnson motor. SS prop. \$11,500. 302-378-8139.

416 Firewood

LEE LARSON
FIREWOOD
PRE-SEASON SPECIAL!!
\$65 Cord Split Seasoned Hardwoods
\$55 Cord Seasoned Oak
\$75 Cord Seasoned Sassafras
MULCH & SAWDUST AVAILABLE ALSO
301-392-5175

420 Furniture

Early American sofa & matching chair. Sofa \$150. Chair \$75. Solid maple octagon shaped lamp table \$50. Everything in good condition. Cash payment required. Call for appointment. 302-368-0398.

Sofa Bed, Loveseat & Chair. 1 End table & 1 Coffee Table. All best offer. 302-366-0796.

USED FURNITURE
Baby crib \$75, dishwasher \$50. Sofa, reclining chair best offer. Call 368-3563.

MONEY FOR YOUR JUNK!
Furniture, bicycles, tools, dishes, mowers, toys, outdoor motors, pictures, fish equip., etc. Will Pick Up. Call 301-275-2290.

OFFICE EQUIPMENT
Canon Copier Model NP-350F w/cabinet. Totally reconditioned. New \$6200. Sacrifice \$1695. Pinney-Bowes Postage Machine Model 5460. \$895. 302-737-7220.



20 Tulip Drive, Holland Acres
\$105,000

PORTRAIT OF PROMISE! - Brand new 3 BR. 2 Bth rancher with full Basement. Central Air, Gas heat on .6 acre corner lot with fruit trees. For more information call Ruth Carson White (301) 658-5126.

DIRECTIONS: from Rising Sun: Tome Hwy: Rgt on Liberty Grove Rd. - Lft on Windmill Rd. - Rgt on Tulip Dr. - Rancher on right.

Barry Montgomery, Broker - Rising Sun, MD

430 Miscellaneous

Construction & Utility Trailers
car dolly...\$995
5x8 lift bed...\$695
6x10 with loading gate...\$995
6x12 with loading gate...\$1195
16' all purpose...\$1995
16' car hauler...\$1995
16' landscaper special...\$2195
18' construction trailer...\$3400
24' 10 ton Dually...\$5995
FIELDBORO AUTO, INC.
302-834-5300

A Quiet Country Setting
WINDING BROOK APTS.
Modern 1 & 2 BR Apts.
Start \$410.

All With: start \$410.
• Balcony or Patio
• 24 on-site maintenance
• Senior Citizen Discount
• Open Spaces
• Cable Available

Mon., Tues., Thurs., Fri. 9-5
Wed. Noon to 5: Sat. 11 to 4
CLOSED SUNDAY
(301) 398-9496
1 mile off Elkton Rd. at DE/MD line

NORTH EAST REALTY
710 South Main Street
NORTH EAST, MARYLAND
301-287-2255 • 301-287-9388



9 SCHOOLHOUSE LANE, DELAPLAIN
NORTH EAST, MD

A classic ranch style design with a totally brick exterior. Attractively situated high on a .83 Acre lot surrounded by mature hardwoods. 4 BR's, 2 1/2 Baths, LR, DR, Family RM w/brick fireplace, Eat-in Kitchen & Extra Summer Kitchen, 2 Car Garage. 2118 Sq. ft. & a Full Basement. \$175,000.

Meander Through The Meadows

The Meadows of Elk Creek...a quiet sanctuary that offers the charm of country living and the comforts of a **NEW** luxury apartment community. Come to your hideaway with cozy courtyards, recreation center, pool, Jacuzzi, tennis courts and furnished washer/dryer. Choose from 1, 2 and 3 bedroom homes. Conveniently located to Elkton and I-95.

(301) 398-0470
439 Muddy Lane
Elkton, MD

THE MEADOWS AT ELK CREEK
A Case Edwards Community
Shelter MANAGEMENT GROUP

Take A Peek At
TURNQUIST APARTMENTS
And See What Everyone Is Talking About!

BRAND NEW
1 & 2 Bedroom Apartments With Private Entrances, Washer & Dryer. Fully Equipped. Sunlit Kitchen, Wall-To-Wall Carpet, A/C, Cedar Deck & Patios.

RESERVE YOURS BEFORE WINTER SETS IN!

Rentals From **\$445.00***
*HANDICAP UNITS AVAILABLE

FOR LEASING INFORMATION (301) 392-0099

EAST RT. 40 WEST-ELKTON
DELAWARE LINE RT. 701 DELAWARE RD. RT. 281 ELKTON-MAIN ST.



GLEN FARMS - Large and nicely landscaped country lot in Glen Farms is the setting for this well maintained 3 BR rancher. Come live in rural setting just minutes from Newark and Wilmington. Call George H. Williams for details.

FAIR HILL - Superbly decorated 4 BR Colonial in Surrey Ridge. Beautifully landscaped grounds complete with above ground pool and privacy fence. Ask for Lloyd Sanders.

A GREAT BUY - Where can a family find 13+/- acres of seclusion, 3-5 bedroom home, 3 full baths, family room with fireplace for only \$179,900. Call Rosemarie Quinn for information & inspection at office or home number 398-5250.

HILLTOP RD. - 3 BR hillside ranch on 4.7 acres both wooded and open. Just 10 minutes to Newark. Call Rose Quinn for details.

ELK MILLS - This 3 BR ranch sits on 1.3 acres and includes 2 full baths, wooden gazebo, satellite dish, Home Warranty, and much more. Call Rose Marie Quinn for details.

TWO RIVERS - NEW! Contemporary cypress ranch with southern view of Bohemia River. Features 3 BR, 2 baths, large FR with fireplace. Pick your carpets and move in! Ask for Lloyd Sanders.

HARLAN C. Williams Co. REALTORS
Stop By Our Convenient Location
"SERVING THE GREATER CHESAPEAKE"
5800 Telegraph Rd. (Rt. 273), Elkton, Maryland 21921
301-398-2300
DELAWARE-MARYLAND-PENNSYLVANIA

IT'S 12 NOON. TIME FOR ANOTHER LIFE OR DEATH DECISION.



When you make a habit of choosing high cholesterol foods, you're choosing a dangerous course. One that could lead to a high cholesterol level in your blood and eventually to a heart attack. Remember that the next time you browse through a menu. And place your order as though your very life depended on it.

American Heart Association
WE'RE FIGHTING FOR YOUR LIFE
This space provided as a public service.

CLASSIFIED

MASON DIXON REALTY

Proud Presentation!

JUDY KIMBALL
301-658-4513

43 HAWTHORNE DRIVE
RANCHER W/2-CAR GARAGE. 1/2 acre lot. 3 BR's, 2 baths, full basement/outside entrance. Large country kitchen with plenty of room for family to gather. Has "eyecatching" 1/2 brick front. Tom Dye builder. \$109,900.

NEW SUB-DIVISION IN PERRYVILLE!
MAGRAW VILLAGE - Wooded lot with town water and sewage. All brick front on this great little rancher with nice front porch. 3 BR, 2 full baths, living room, and country eat-in kitchen. Has lots of "Curb Appeal." Close to APG and Perry Point Hospital, as well as Rt #40 and I-95. Quality construction by McGuffey Construction Co. \$95,000. Call Judy Kimball at 301-658-4513 or the Rising Sun office.

Barry Montgomery, Broker - Rising Sun, MD

RISING SUN OFFICE
301-658-4911
301-378-2901

WESTMORELAND REALTORS-BUILDERS

ALMOST 14 ACRES
some clear, some wooded, borders the North East Creek private and in an excellent area. Ideal for horses and a large homestead. Has small home on property now in good condition. Possibility exists for building a second. Owner financing with as little as 10% down for qualified buyers. Asking \$159,900. (20-443)

NEW LISTING
Move in in 60 days. 4BR, 2 1/2 bath, Cape Cod w/approx. 1700-sq. ft. of living space. Full basement w/OSE, electric B/B heat. Situated on wooded lot in Elk Neck area. Priced at \$119,900. Save \$15,000 by finishing the 2nd level (2 BR & bath) yourself (\$104,900). Still time to add options such as garage, central air, & fireplace. Call Chuck for details (301)287-8578. (40-436)

NEW LISTING
Now under construction, ready to occupy in about 60 days. Has 3 BR's, 1 1/2 baths, 24x24 2 car gar. Rancher on a 6/10 (+/-) acre lot in Holland Acres, located off Dr. Jack Rd. Has heat pump & AC, upgraded quality and craftsmanship & more. Call Wes 301-287-5657 for details. Asking \$114,900.

NEW CONSTRUCTION
Large 2 story colonial on 20 +/- acres. Located in Elk Neck area. 4 BR, 2 1/2 baths, 2 car garage, H/P, C/A, full basement. Very secluded & private. Only \$249,500. Call Chuck 301-287-8578. Time to pick all colors.

OPEN HOUSE SUNDAY OCT. 1 1:00 to 4:00 P.M.

ALMOST COMPLETE - New construction. Shady Beach Road, new bi-level, brick front, 1232 sq. ft. 3BR, HP/CA, full walk-out basement, 1/2 ac. lot. Offered at \$107,900. Ready to occupy in 30 days. Call Chuck 287-8578 (30-404).

DIRECTIONS: Route 272 S. to Shady Beach Rd. Follow for approx. 2 miles, sign on property.

NEW HOME
Scheduled to start soon. 1344 sq. ft. bi-level w/2 baths, heat pump, AC & 2 car gar in lower area. On a 1/2 acre wooded lot off Old Elk Neck Rd. w/171' road frontage. Larger than normal home, priced to sell at \$109,900 or we can custom build the home of your choice. Call Wes 301-287-5657 for appt. to review this home & others.

NICE HORSE FARM
17 acres and several hundred feet along Basin Run Creek currently fenced for horses, has 30x40 almost new barn, nice mobile home has 12x16 addition, beautiful view of surrounding farmland. Percable and sub-divisible. Priced to sell at \$145,000 call Joyce Boyd 287-5657 or 642-6420. Ideal home site. (40-422)

THREE 3 ACRE LOTS
On US Rt. 40 priced at \$200,000, \$225,000 & \$250,000. Lots will pass perc. Nine acres total, can be bought in whole or in part. Current zoning is R1. Will consider rezoning to C2 with owner financing. See Mr. Westmoreland for complete details (20-445, 446, 447).

Waterfront • Lots
New Homes • Investments
500 S. Main St.
North East, MD
301-287-5657

OPPORTUNITY OF A LIFETIME
Wharf Restaurant located on Main St. North East. Owner says to sell at a "give away" price. How about \$65,900.00. Here is your chance to be your own boss. Business only, no real estate. Call Chuck 287-8578. (30-420)

17 ACRES ZONED M-2
heavy industrial land with rail access off Rt. 7. Excellent location for industrial development, land will pass perc. Owner will consider owner financing to qualified buyers with 10% to 20% down depending on strength of buyers with 11% interest for 20 yrs. Contact Mr. Westmoreland, for complete details. (20-444)

WOODED PRIVACY
Modern contemporary home on 2.5 acres. Bordering state forest, farms and picturesque Basin Run Creek. Near historical area. Has an inground pool and more. Unbelievably priced to sell at only \$145,000. Call Joyce Boyd 301-642-6420.

MULTI-FAMILY ZONING
on this 82x225 corner lot on corner of Cecil Ave. and Mauldin Ave. in North East currently has 2-unit duplex on site. Excellent potential for many possibilities with site plan approval by town officials could be a prime corner. Contact Mr. Westmoreland for details on this and special owner financing available. Asking \$150,000. (20-448)

ELK RIDGE LOTS
• .852 acre Wooded Lot - Elk Neck Rd. - \$32,500
• .755 acre Wooded Lot - McKinney Town Rd. - \$38,500
• 1.111 acre Wooded Lot - McKinney Town Rd. - \$38,500
Excellent area of fine homes. All very private home sites, ready to build on. Call Wes Westmoreland 287-9173 at home or office.

CHARLESTOWN AREA
75 acres open - wooded with stream. Brick Cape Cod. 4 BR's, large kitchen, 2 car garage and much more. Call now for details. Offered at \$270,000, #204-30. Call office or home 301-287-9616 or 301-392-4756.

UNIQUE FARM HOME
Located in a convenient location. Front porch and wrap around deck. Horse barn, livestock barn, and fenced pasture all on 7 acres. Mature shade and fruit trees. Offered at \$180,000, #312-30. Call office or home 301-398-4089.

COUNTRY LIVING
Beautiful home situated on a 1/2 acre. Heat pump, sitting room, fireplace, 2 car garage. A must see. Offered at \$127,900, #303-50. Call office or home 301-658-2545.

LOTS
Chiefs Mountain Lane - 1.4 acres - \$31,500 - #290-60
North East - 99.7 acres - \$398,800 - #287-60
Rowland Road - wooded - 3 acres - \$58,900 - #283-60

QUIET NEIGHBORHOOD
Wall to wall carpet, brick fireplace in living room with accessories and glass door. 1 car garage, country kitchen. Offered at \$89,900, #317-50. Call office or home 301-885-5488.

PEMBREY - 1 acre to 5 acres - #222-80
St. Johns Manor - .9 ac - #242-80

398-4300
104 Northside Plaza • Elkton, MD
1-800-345-6772

A MEMBER OF THE SEARS FINANCIAL NETWORK
COLDWELL BANKER

POWELL LTD. REALTORS®
RESIDENTIAL REAL ESTATE
An Independently Owned and Operated Member of Coldwell Banker Residential Affiliates, Inc.

HERES A THREE ACRE ESTATE
Stone Colonial contains a flowing floor plan excellent for entertaining. The rooms are spacious with peaceful colors. Call for more details. Offered at \$289,500, #315-50. Call office or home 301-392-4756 or 301-287-9616.

SPACIOUS
Beautiful two story, large kitchen two walk-in closets in master bedroom, cathedral ceiling in family room. 1.6 ac., water oriented community. #221-30. Call office or home 301-287-9616 or 301-392-4756.

CARDIFF
Tiffin built home with heat pump. Quick delivery. Vaulted ceiling in living room. 2 baths. Country setting. Call now. Offered at \$104,900, #318-40. Call office or home 301-392-4756 or 301-287-9616.

UNIQUE FARM HOME
Located in a convenient location. Front porch and wrap around deck. Horse barn, livestock barn, and fenced pasture all on 7 acres. Mature shade and fruit trees. Offered at \$180,000, #312-30. Call office or home 301-398-4089.

COUNTRY LIVING
Beautiful home situated on a 1/2 acre. Heat pump, sitting room, fireplace, 2 car garage. A must see. Offered at \$127,900, #303-50. Call office or home 301-658-2545.

LOTS
Chiefs Mountain Lane - 1.4 acres - \$31,500 - #290-60
North East - 99.7 acres - \$398,800 - #287-60
Rowland Road - wooded - 3 acres - \$58,900 - #283-60

QUIET NEIGHBORHOOD
Wall to wall carpet, brick fireplace in living room with accessories and glass door. 1 car garage, country kitchen. Offered at \$89,900, #317-50. Call office or home 301-885-5488.

PEMBREY - 1 acre to 5 acres - #222-80
St. Johns Manor - .9 ac - #242-80

398-4300
104 Northside Plaza • Elkton, MD
1-800-345-6772

October 5, 1989/The NewArk Post

Friends don't let friends drive drunk.

CLASSIFIED CONNECTION

430 Miscellaneous 614 Commercial 708 Mobile Home/Sale 808 Automobiles 808 Automobiles 808 Automobiles 808 Automobiles 808 Automobiles 808 Automobiles

POLE BUILDINGS
Garages-Horse Barns-Storage-Commercial. Completely erected. Overhead entrance doors. Many sizes options available. **HIGH PLAINS CORPORATION**, 1-800-326-1449 ANYTIME.

Wm Penn Alumni T-shirts. Out-gley Market, Frenchtown Rd. Rt. 273. 302-328-7732.

432 Musical Instruments

NEW FULL SIZED DREAD-NAUGHT FLAT TOP GUITAR G300 designed and manufactured for Martin. Features a spruce top, mahogany back & sides, geared tuners, rosewood bridge & finger-board. A beautiful Martin guitar with that wonderful Martin sound. Only \$145. Call Alex Campbell at Rising Sun, MD. 301-658-3679.

BUSINESS OPPORTUNITIES

504 Money to Lend

FINANCING AVAILABLE
STOP FORECLOSURE
REAL ESTATE LOANS
VA/FHA-CONVENTIONAL LOANS
LOW OR NO DOWN PAYMENT
1ST & 2ND MORTGAGES
BUSINESS & COMMERCIAL LOANS
301-358-2244
James Barnes IV
Financial Services
Licensed & Bonded

RENTALS

602 Rooms

MOTEL ROOMS
EFFICIENCY APARTMENTS
From \$14/Daily
Low Weekend Rates
301-398-4400 301-392-0955
301-287-9877 302-658-4191
302-328-7529

603 Roommate Wanted

Sunny townhouse near I-95 & UD. No smoking/pets. New w/w, kitchen. \$180-\$220 plus utilities. 302-737-0124.

608 Unfurnished Apts.

MOTEL ROOMS
EFFICIENCY APARTMENTS
From \$14/Daily
Low Weekend Rates
301-398-4400 301-392-0955
301-287-9877 302-658-4191
302-328-7529

614 Commercial

MEDICAL OFFICE
Furnished, for rent in Elkton. Located conveniently on U.S. Rt. 40 in a professional building with ample free parking. Call 301-398-6800.

WAREHOUSE/OFFICE SPACE
New building, great Rt. 40 location. 1250sq.ft., 2500sq.ft., 3500sq.ft. suites now available. Call Pat at 302-834-6222.

616 House for Rent

Spacious new townhome. 3BR, 1 1/2 bath, fully equipped kitchen, w/w carpet, a/c, rear deck, full basement. \$675/month plus security deposit. 301-398-8356.

REAL ESTATE

702 Housing for Sale

A Real Steel, only \$70,000 buys a 3BR, 1 bath rancher in rural Elkton, MD. Property in mint condition. Must see to believe value. Call Richard Deering for appointment, 1-800-232-7425.

GOVERNMENT HOMES from \$1.00 (U Repair) Foreclosures, Reposs. Tax Delinquent Properties. Now selling. Call 1-315-736-7375. Ext. H-DE-NI current lists. 24hrs.

TOME REALTY COMPANY

565 Biggs Hwy.
Rising Sun, MD. 21911
301-378-3566
301-658-5510

REAL ESTATE & APPRAISING

TOME REALTY COMPANY
565 Biggs Hwy.
Rising Sun, MD. 21911
Howard B. Tome - Broker
TOWNSEND-Fixer Upper.
3BR, 2 bath, double lot.
\$55,000. 302-378-2200.

704 Property for Sale

6 unit apartment building in Rising Sun, MD. Mint, perfect condition. Positive cash flow. Current owner looking for quick sale. Purchase price: \$250,000. Excellent cash flow already in place. Call Richard Deering, 1-800-232-7425.

6 unit apartment building in North East, MD. Excellent condition. Positive cash flow. Current owner looking for quick sale. Purchase price: \$215,000. Excellent cash flow already in place. Call Richard Deering, 1-800-232-7425.

Completely renovated duplex (both sides) in Elkton, MD. Mint, perfect condition. Positive cash flow. Current owner looking for quick sale. Purchase price: \$115,000. Excellent cash flow already in place. Call Richard Deering, 1-800-232-7425.

RISING SUN/COLORA AREA
By Owner, new 2000 sq ft Colonial, 15 min. to I-95. Beautiful 3BR, 3 bath, 2 car garage, full base, paved drive, satellite dish, washer, dryer, water treatment system, side by side refrig, many interior extras. \$145,000. No realtors please! 301-658-3177.

HOLLYPARK 1988, 2BR, 1 1/2 bath, central air, in circle lot. Excellent condition. 302-378-7998.

SKYLINE 1986 14x70 3BR, 1 1/2 bath, washer/dryer. Set up in park. 302-378-0377.

TRANSPORTATION

806 Trucks/Vans

FORD-77 Rancher Pick-up, V-8, auto., ps, low miles. \$1995 cash. Bill Bryans N/C Trades. Call 302-652-4343.

1984 Escort Wagon 5spd., a/c, 56k miles. Excellent condition. Original owner. \$2495. 302-731-7325.

6000 STE '84 Auto, ps/pb, p/l, p/seal, p/w/in, tilt, cruise, cass, 6cyl, alum wheels, 35K, clean. \$5995

600 SE '87 Loaded, lt. crystal blue, auto, ps/pb, p/w, p/l, p/seal. \$6695

AMC-81 Spirit, 2dr, coupe, 6cyl., auto., ps, am/fm stereo. \$495 cash. We finance our own. On spot deliver. Bill Bryans N/C Trades. Call 302-652-4343.

AUDI-79 5000 S Diesel, 4dr, 5spd., ps, am/fm, 81K. \$895 down. We finance our own. On spot deliver. Bill Bryans N/C Trades. Call 302-652-4343.

AUDI-79 5000 S, 4dr, auto., ps, am/fm, fuel inj. \$995 down. We finance our own. On spot deliver. Bill Bryans N/C Trades. Call 302-652-4343.

AUTO AUCTION
Every Thursday at 7pm. Buy and/or sell the dealer way at public auction. Seller's fee \$20 flat.

NORTH EAST AUCTION GALLERIES
301-287-5588
1-800-233-4169

BMW-1985 318-4 4DR, Auto Trans, Sun Roof, Loaded. Fully powered. Black exterior with Oyster leather interior. Excellent condition. MD State Inspected. \$9,500, or best offer.

Call Mr. Johnson
Days 1-800-523-5397
301-398-3311
Evenings or Weekends
301-592-6680

BUICK-80 Regal, V-8, auto., ps, pb, ac, am/fm, T-tops. \$995 down. We finance our own. On spot deliver. Bill Bryans N/C Trades. Call 302-652-4343.

CAVALIER '84 Auto, ps, pb, am/fm. \$2188

CASTLE FORD
Rt. 9, New Castle
Monday-Friday 9-9
302-2300
Saturday 9-5

CHEVETTE 4 DR '84 Auto, 4cyl, economy car. \$1995

CHEVY '86 CELEBRITY 4DR Auto, ps, pb, a/c, am/fm stereo. \$4995

CHEVY '89 C1500 Auto, 350V8, ps/pb, cruise, tilt, p-locks/windows, cass, 10,000 miles. \$12,795

CUTLASS CRUISER SW '85 4dr, loaded, rear seat. \$7295

DODGE-80 Diplomat, Slant 6, auto., ps, pb. We finance our own. On spot deliver. \$395 down. Bill Bryans N/C Trades. Call 302-652-4343.

TOYOTA-80 Celica, 4cyl., 5spd., ps, pb, ac, am/fm. \$995 down. We finance our own. On spot deliver. Bill Bryans N/C Trades. Call 302-652-4343.

TOYOTA-80 Celica, 4cyl., 5spd., ps, pb, ac, am/fm. \$995 down. We finance our own. On spot deliver. Bill Bryans N/C Trades. Call 302-652-4343.

TOYOTA-80 Celica, 4cyl., 5spd., ps, pb, ac, am/fm. \$995 down. We finance our own. On spot deliver. Bill Bryans N/C Trades. Call 302-652-4343.

TOYOTA-80 Celica, 4cyl., 5spd., ps, pb, ac, am/fm. \$995 down. We finance our own. On spot deliver. Bill Bryans N/C Trades. Call 302-652-4343.

TOYOTA-80 Celica, 4cyl., 5spd., ps, pb, ac, am/fm. \$995 down. We finance our own. On spot deliver. Bill Bryans N/C Trades. Call 302-652-4343.

TOYOTA-80 Celica, 4cyl., 5spd., ps, pb, ac, am/fm. \$995 down. We finance our own. On spot deliver. Bill Bryans N/C Trades. Call 302-652-4343.

TOYOTA-80 Celica, 4cyl., 5spd., ps, pb, ac, am/fm. \$995 down. We finance our own. On spot deliver. Bill Bryans N/C Trades. Call 302-652-4343.

TOYOTA-80 Celica, 4cyl., 5spd., ps, pb, ac, am/fm. \$995 down. We finance our own. On spot deliver. Bill Bryans N/C Trades. Call 302-652-4343.

TOYOTA-80 Celica, 4cyl., 5spd., ps, pb, ac, am/fm. \$995 down. We finance our own. On spot deliver. Bill Bryans N/C Trades. Call 302-652-4343.

TOYOTA-80 Celica, 4cyl., 5spd., ps, pb, ac, am/fm. \$995 down. We finance our own. On spot deliver. Bill Bryans N/C Trades. Call 302-652-4343.

TOYOTA-80 Celica, 4cyl., 5spd., ps, pb, ac, am/fm. \$995 down. We finance our own. On spot deliver. Bill Bryans N/C Trades. Call 302-652-4343.

TOYOTA-80 Celica, 4cyl., 5spd., ps, pb, ac, am/fm. \$995 down. We finance our own. On spot deliver. Bill Bryans N/C Trades. Call 302-652-4343.

TOYOTA-80 Celica, 4cyl., 5spd., ps, pb, ac, am/fm. \$995 down. We finance our own. On spot deliver. Bill Bryans N/C Trades. Call 302-652-4343.

TOYOTA-80 Celica, 4cyl., 5spd., ps, pb, ac, am/fm. \$995 down. We finance our own. On spot deliver. Bill Bryans N/C Trades. Call 302-652-4343.

TOYOTA-80 Celica, 4cyl., 5spd., ps, pb, ac, am/fm. \$995 down. We finance our own. On spot deliver. Bill Bryans N/C Trades. Call 302-652-4343.

TOYOTA-80 Celica, 4cyl., 5spd., ps, pb, ac, am/fm. \$995 down. We finance our own. On spot deliver. Bill Bryans N/C Trades. Call 302-652-4343.

TOYOTA-80 Celica, 4cyl., 5spd., ps, pb, ac, am/fm. \$995 down. We finance our own. On spot deliver. Bill Bryans N/C Trades. Call 302-652-4343.

TOYOTA-80 Celica, 4cyl., 5spd., ps, pb, ac, am/fm. \$995 down. We finance our own. On spot deliver. Bill Bryans N/C Trades. Call 302-652-4343.

TOYOTA-80 Celica, 4cyl., 5spd., ps, pb, ac, am/fm. \$995 down. We finance our own. On spot deliver. Bill Bryans N/C Trades. Call 302-652-4343.

TOYOTA-80 Celica, 4cyl., 5spd., ps, pb, ac, am/fm. \$995 down. We finance our own. On spot deliver. Bill Bryans N/C Trades. Call 302-652-4343.

TOYOTA-80 Celica, 4cyl., 5spd., ps, pb, ac, am/fm. \$995 down. We finance our own. On spot deliver. Bill Bryans N/C Trades. Call 302-652-4343.

DODGE-80 Omni, 4dr., 4 cyl., 4spd., ps, am/fm. \$395 down. We finance our own. On spot deliver. Bill Bryans N/C Trades. Call 302-652-4343.

FORD-81 Mustang, 4cyl., auto., ps, am/fm, ac. \$895 down. We finance our own. On spot deliver. Bill Bryans N/C Trades. Call 302-652-4343.

LYNX 2 DOOR '85 A/C, ps/pb, 4cyl, stereo. \$3695

MAZDA '85 GLC 4cyl, p/b, tilt, sunroof, mag wheels, cassette. \$2795

PLYMOUTH '87 SUNDANCE Auto, ps, pb, tilt, cruise, cassette, turbo, nice car. \$6495

PONTIAC-81 Grand Prix LT, fully loaded, showroom cond. \$1195 down. We finance our own. On spot deliver. Bill Bryans N/C Trades. Call 302-652-4343.

TOYOTA-80 Celica, 4cyl., 5spd., ps, pb, ac, am/fm. \$995 down. We finance our own. On spot deliver. Bill Bryans N/C Trades. Call 302-652-4343.

TOYOTA-80 Celica, 4cyl., 5spd., ps, pb, ac, am/fm. \$995 down. We finance our own. On spot deliver. Bill Bryans N/C Trades. Call 302-652-4343.

TOYOTA-80 Celica, 4cyl., 5spd., ps, pb, ac, am/fm. \$995 down. We finance our own. On spot deliver. Bill Bryans N/C Trades. Call 302-652-4343.

TOYOTA-80 Celica, 4cyl., 5spd., ps, pb, ac, am/fm. \$995 down. We finance our own. On spot deliver. Bill Bryans N/C Trades. Call 302-652-4343.

TOYOTA-80 Celica, 4cyl., 5spd., ps, pb, ac, am/fm. \$995 down. We finance our own. On spot deliver. Bill Bryans N/C Trades. Call 302-652-4343.

TOYOTA-80 Celica, 4cyl., 5spd., ps, pb, ac, am/fm. \$995 down. We finance our own. On spot deliver. Bill Bryans N/C Trades. Call 302-652-4343.

TOYOTA-80 Celica, 4cyl., 5spd., ps, pb, ac, am/fm. \$995 down. We finance our own. On spot deliver. Bill Bryans N/C Trades. Call 302-652-4343.

TOYOTA-80 Celica, 4cyl., 5spd., ps, pb, ac, am/fm. \$995 down. We finance our own. On spot deliver. Bill Bryans N/C Trades. Call 302-652-4343.

TOYOTA-80 Celica, 4cyl., 5spd., ps, pb, ac, am/fm. \$995 down. We finance our own. On spot deliver. Bill Bryans N/C Trades. Call 302-652-4343.

TOYOTA-80 Celica, 4cyl., 5spd., ps, pb, ac, am/fm. \$995 down. We finance our own. On spot deliver. Bill Bryans N/C Trades. Call 302-652-4343.

TOYOTA-80 Celica, 4cyl., 5spd., ps, pb, ac, am/fm. \$995 down. We finance our own. On spot deliver. Bill Bryans N/C Trades. Call 302-652-4343.

TOYOTA-80 Celica, 4cyl., 5spd., ps, pb, ac, am/fm. \$995 down. We finance our own. On spot deliver. Bill Bryans N/C Trades. Call 302-652-4343.

TOYOTA-80 Celica, 4cyl., 5spd., ps, pb, ac, am/fm. \$995 down. We finance our own. On spot deliver. Bill Bryans N/C Trades. Call 302-652-4343.

TOYOTA-80 Celica, 4cyl., 5spd., ps, pb, ac, am/fm. \$995 down. We finance our own. On spot deliver. Bill Bryans N/C Trades. Call 302-652-4343.

TOYOTA-80 Celica, 4cyl., 5spd., ps, pb, ac, am/fm. \$995 down. We finance our own. On spot deliver. Bill Bryans N/C Trades. Call 302-652-4343.

TOYOTA-80 Celica, 4cyl., 5spd., ps, pb, ac, am/fm. \$995 down. We finance our own. On spot deliver. Bill Bryans N/C Trades. Call 302-652-4343.

TOYOTA-80 Celica, 4cyl., 5spd., ps, pb, ac, am/fm. \$995 down. We finance our own. On spot deliver. Bill Bryans N/C Trades. Call 302-652-4343.

TOYOTA-80 Celica, 4cyl., 5spd., ps, pb, ac, am/fm. \$995 down. We finance our own. On spot deliver. Bill Bryans N/C Trades. Call 302-652-4343.

TOYOTA-80 Celica, 4cyl., 5spd., ps, pb, ac, am/fm. \$995 down. We finance our own. On spot deliver. Bill Bryans N/C Trades. Call 302-652-4343.

TOYOTA-80 Celica, 4cyl., 5spd., ps, pb, ac, am/fm. \$995 down. We finance our own. On spot deliver. Bill Bryans N/C Trades. Call 302-652-4343.

TOYOTA-80 Celica, 4cyl., 5spd., ps, pb, ac, am/fm. \$995 down. We finance our own. On spot deliver. Bill Bryans N/C Trades. Call 302-652-4343.

TOYOTA-80 Celica, 4cyl., 5spd., ps, pb, ac, am/fm. \$995 down. We finance our own. On spot deliver. Bill Bryans N/C Trades. Call 302-652-4343.

T-BIRD 2 DOOR '87 Auto, ps/pb, 6cyl, low mi. \$8795

TEMPO '85 Auto, ps/pb, 4cyl, cass. \$2995

TURBO COUPE '87 5spd, p/b, p/s, a/c, p-locks, p-seats, p-windows, tilt, cruise. \$9795

VW-81 Rabbit, Auto., 4dr., 60-dan, 4 cyl., ps, am/fm, buckets, console. \$595 down. We finance our own. On spot deliver. Bill Bryans N/C Trades. Call 302-652-4343.

Don't Forget! We have a FREE Yard Sale kit for you when you advertise your yard sale with us!

RENTAL
Rt. 9, New Castle
Monday-Friday 9-9
302-2300
Saturday 9-5

RENTAL
Rt. 9, New Castle
Monday-Friday 9-9
302-2300
Saturday 9-5

RENTAL
Rt. 9, New Castle
Monday-Friday 9-9
302-2300
Saturday 9-5

RENTAL
Rt. 9, New Castle
Monday-Friday 9-9
302-2300
Saturday 9-5

RENTAL
Rt. 9, New Castle
Monday-Friday 9-9
302-2300
Saturday 9-5

RENTAL
Rt. 9, New Castle
Monday-Friday 9-9
302-2300
Saturday 9-5

RENTAL
Rt. 9, New Castle
Monday-Friday 9-9
302-2300
Saturday 9-5

RENTAL
Rt. 9, New Castle
Monday-Friday 9-9
302-2300
Saturday 9-5

RENTAL
Rt. 9, New Castle
Monday-Friday 9-9
302-2300
Saturday 9-5

RENTAL
Rt. 9, New Castle
Monday-Friday 9-9
302-2300
Saturday 9-5

RENTAL
Rt. 9, New Castle
Monday-Friday 9-9
302-2300
Saturday 9-5

RENTAL
Rt. 9, New Castle
Monday-Friday 9-9
302-2300
Saturday 9-5

RENTAL
Rt. 9, New Castle
Monday-Friday 9-9
302-2300
Saturday 9-5

RENTAL
Rt. 9, New Castle
Monday-Friday 9-9
302-2300
Saturday 9-5

RENTAL
Rt. 9, New Castle
Monday-Friday 9-9
302-2300
Saturday 9-5

RENTAL
Rt. 9, New Castle
Monday-Friday 9-9
302-2300
Saturday 9-5

RENTAL
Rt. 9, New Castle
Monday-Friday 9-9
302-2300
Saturday 9-5

RENTAL
Rt. 9, New Castle
Monday-Friday 9-9
302-2300
Saturday 9-5

RENTAL
Rt. 9, New Castle
Monday-Friday 9-9
302-2300
Saturday 9-5

RENTAL
Rt. 9, New Castle
Monday-Friday 9-9
302-2300
Saturday 9-5

RENTAL
Rt. 9, New Castle
Monday-Friday 9-9
302-2300
Saturday 9-5

RENTAL
Rt. 9, New Castle
Monday-Friday 9-9
302-2300
Saturday 9-5

RENTAL
Rt. 9, New Castle
Monday-Friday 9-9
302-2300
Saturday 9-5

RENTAL
Rt. 9, New Castle
Monday-Friday 9-9
302-2300
Saturday 9-5

RENTAL
Rt. 9, New Castle
Monday-Friday 9-9
302-2300
Saturday 9-5

RENTAL
Rt. 9, New Castle
Monday-Friday 9-9
302-2300
Saturday 9-5

RENTAL
Rt. 9, New Castle
Monday-Friday 9-9
302-2300
Saturday 9-5

RENTAL
Rt. 9, New Castle
Monday-Friday 9-9
302-2300
Saturday 9-5

RENTAL
Rt. 9, New Castle
Monday-Friday 9-9
302-2300
Saturday 9-5

RENTAL
Rt. 9, New Castle
Monday-Friday 9-9
302-2300
Saturday 9-5