

FACULTY



Trustees

EX-OFFICIO

The Governor, ROBERT P. ROBINSON, Dover

The President of the State Board of Education,
T. R. BROWN, M. D., Wyoming

The President of the University, WALTER HULLIHEN

J. HARVEY WHITEMAN, Esq., Wilmington	1892
CHARLES B. EVANS, Esq., Newark	1894
WILLIAM T. LYNAM, Esq., Wilmington	1897
CHARLES S. CONWELL, Camden	1897
L. HEISLER BALL, M. D., Marshallton	1900
W. WATSON HARRINGTON, Esq., Dover	1900
SAMUEL H. MESSICK, Bridgeville	1902
JAMES E. DUTTON, Seaford	1904
JOHN BIGGS, Esq., Wilmington	1905
SAMUEL H. DERBY, Woodside	1905
THOMAS DAVIS, Esq., Wilmington	1908
SAMUEL J. WRIGHT, Newark	1910
HENRY RIDGELY, Esq., Dover	1911
CHARLES M. CURTIS, Esq., Wilmington	1911
EVERETT C. JOHNSON, Newark	1911
HENRY B. THOMPSON, Greenville	1912
EBEN B. FRAZER, Newark	1913
H. RODNEY SHARP, Wilmington	1915
W. H. HEALD, Esq., Wilmington	1915
EDWARD A. EVANS, Cheswold	1916
CHARLES R. MILLER, Wilmington	1917
H. F. DU PONT, Winterthur	1918
HARRY L. CANNON, Bridgeville	1918
HENRY P. SCOTT, Delaware City	1920
WARREN C. NEWTON, Bridgeville	1922
FRANK L. GRIER, M. D., Milford	1922
HARRY V. LYONS, Lewes	1924

THE BLUE HEN



WALTER HULLIHEN, Ph.D., D.C.L.

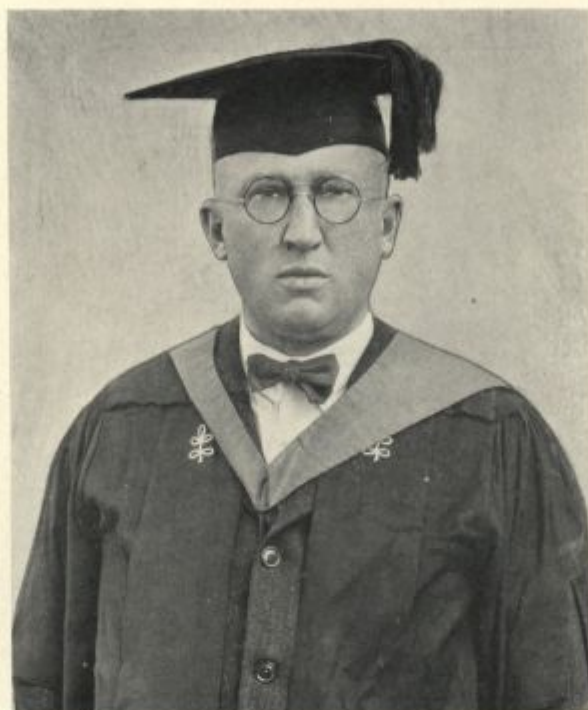
PRESIDENT OF THE UNIVERSITY OF DELAWARE

DR. HULLIHEN was born at Staunton, Virginia, on May 26, 1875. He received his preparatory education at the Staunton Military Academy and was graduated in 1892. From the University of Virginia he received his A.B. and A.M. in 1896. He did post-graduate work at that institution during the scholastic year 1896-1897, and studied at Johns Hopkins University from 1897 to 1900, when he received his Ph.D. At Johns Hopkins he was a University Fellow 1899-1900, and a Fellow by Courtesy, 1900-1902. From 1902 to 1904 he taught Latin and Greek at Marston's University School in Baltimore, and from 1904 to 1909 he was a professor at the University of Chattanooga. Granted a leave of absence in 1907-1908, he went abroad to study at the University of Leipzig, Munich, and Rome. From 1909 to 1920 he was Professor of Greek at the University of the South. He was also Dean of the College of Arts and Science from 1912 to 1920, and in the fall of 1920 he was elected to the presidency of Delaware College and subsequently to that of the University of Delaware. The honorary degree of D.C.L. was conferred upon Dr. Hullihen by the University of the South in 1922.

During the World War Dr. Hullihen served as a Major in the United States Army. At the cessation of hostilities he was uniquely honored by being given a Major's commission in the Officers' Reserve Corps, assigned to the General Staff. His ability as a sportsman is yearly shown to the members of the athletic teams by a venison dinner. For several years he was on the executive committee of the National Collegiate Athletic Association as a representative from the University of the South. Dr. Hullihen is a member of the American Philological Association, the Delta Phi Fraternity, the Phi Beta Kappa Fraternity, and the Phi Kappa Phi Fraternity.

Two outstanding monuments to Dr. Hullihen's administration are the new Memorial Library and the admission of the University of Delaware on the same parity as the older established institutions.

THE BLUE HEN



GEORGE ELLIOTT DUTTON

Dean Dutton was born in Seaford, Delaware, in 1881. After receiving his preliminary education in the schools of Seaford, he entered Delaware College in 1899 and was graduated with the A.B. degree in June, 1904. From 1905 to 1908 he did graduate work at Johns Hopkins University in English, Philosophy, and Modern Languages. During the scholastic year 1909-10 he was instructor in English at the University of Missouri. After a year's graduate work at Harvard, he received the A.M. degree in 1911. Responding to the call of his Alma Mater, in September, 1911, Dean Dutton became instructor in English, in which capacity he served until his appointment as assistant professor in 1913. In 1917 he was elected associate professor of English, and the following year was made a full professor in

this department. In July, 1923, he became Dean of Delaware College.

Dean Dutton is a member of the Kappa Alpha Fraternity, the Phi Kappa Phi Fraternity, the Modern Language Association, and the American Association of College Registrars. In collaboration with Dr. Sypherd, Dean Dutton is the author of "Specimens of Composition" and "English Composition for College Freshmen." He has also written a Course in Debating for High Schools.

During his brief tenure of office, Dean Dutton has shown a considerable interest in all student activities, especially those tending to promote higher scholastic standing in the student body. The results have been very satisfactory. In Dean Dutton we have the ideal combination of a scholar, a gentleman, a friend, and a loyal son of Old Delaware.

THE BLUE MEN



MERRILL VAN GIESEN SMITH

Dean Smith was born in 1871 at Montclair, New Jersey. He received his early education in the public schools of his home town, and was subsequently graduated from Stevens High School. He was graduated in 1896 from the Stevens Institute of Technology with the degree of M.E. During the year 1896 and 1897 he was a writer on the editorial staff of the *Railroad Gazette*. He served as an instructor in Mechanical Engineering at the University of Pennsylvania during the scholastic year 1897-1898. After a period of illness, Dean Smith substituted here in the first quarter of the year 1902. From 1902 to 1904 he was Professor of Mechanical Engineering at the Thomas S. Clarkson School of Technology, and in 1904 he became Professor of Mechanical Engineering at Delaware College. In 1922 he was appointed Dean of the School of Engineering.

Dean Smith is a member of the Tau Beta Pi Fraternity, the Phi Kappa Phi Fraternity, the American Society of Mechanical Engineers, and the Engineers' Club of Philadelphia.

Under the leadership of Dean Smith the School of Engineering has advanced by leaps and bounds to its present high rating by the Westinghouse Electric Company.



CHARLES ANDREW McCUE

Dean McCue was born in 1879, near Cars City, Michigan. He was graduated from Michigan Agricultural College in 1901 with the degree of S.B. During the scholastic year 1903-04 he did graduate work, and was Instructor in Horticulture at his Alma Mater from 1904 to 1907. In 1907 he was elected Professor of Horticulture at Delaware College and Horticulturist of the Experiment Station. In 1913 and 1915 he did graduate work in Biology at the University of Pennsylvania. In 1919 he was appointed Dean of the School of Agriculture and Director of the Agricultural Experiment Station. He served temporarily as Dean of Delaware College during the year 1922-'23.

Dean McCue was President of the American Society for Horticultural Science in 1918. He is a member of the American Association for the Advancement of Science, the American Genetic Association, the American Pomological Society, and the Phi Kappa Phi Fraternity.

Dean McCue has brought a great personal interest in his work as head of the agricultural department, and under his guidance the department is turning out experienced agriculturists to supply the needs of our state farms every year.

THE BLUE HEN



DEPARTMENT OF ENGINEERING

GEORGE ABRAM HARTER

Professor of Mathematics and Physics. A.B., St. John's College, 1878; Ph.D., St. John's College, 1893; Sigma Nu Fraternity; Phi Kappa Phi Fraternity.

MERRILL VAN GIESEN SMITH

Professor of Mechanical Engineering. M.E., Stevens Institute of Technology; Phi Kappa Phi Fraternity.

GEORGE ALBERT KOEBER

Professor of Electrical Engineering. E.E., Lafayette College, 1908; Sigma Nu Fraternity; Phi Beta Kappa Fraternity; Phi Kappa Phi Fraternity.

ROBERT WILLIAM THOROUGHGOOD

Professor of Civil Engineering. C.E., Lehigh University, 1902; Phi Kappa Phi Fraternity.

HOWARD KENT PRESTON

Professor of Engineering. C.E., Lafayette College, 1909; Phi Kappa Phi Fraternity.

GEORGE PORTER PAINE

Associate Professor of Physics. A.B., Harvard University, 1905; A.M., Harvard University, 1907; Ph.D., University of Wisconsin, 1918; Sigma Phi Epsilon

Fraternity; Sigma Xi Fraternity; Phi Kappa Phi Fraternity.

CARL SEIB RANKIN

Assistant Professor of Engineering and Mathematics. C.E., Lafayette College, 1911; S.B., Columbia University, 1912; Sigma Alpha Epsilon Fraternity; Phi Beta Kappa Fraternity.

THOMAS DARMORE SMITH

Assistant Professor of Mathematics. S.B. in C.E., Rutgers College, 1913.

CARL JOHN REES

Assistant Professor of Mathematics. A.B., Franklin and Marshall College, 1918; A.M., University of Chicago, 1924.

LEO BLUMBERG

Assistant Professor of Engineering. E.E., University of Delaware, 1919; Phi Kappa Phi Fraternity; Sigma Tau Phi Fraternity.

WILLIAM FRANCIS LINDELL

Instructor in Engineering. S.B. in E.E., University of Delaware, 1920; E.E., University of Delaware, 1924.

JOHN LINTON COYLE

Instructor in Shop Work.

THE BLUE HEN



DEPARTMENT OF AGRICULTURE

CHARLES ANDREW McCUE

Professor of Horticulture. S.B., Michigan Agricultural College, 1901; Phi Kappa Phi Fraternity.

CLINTON OSBORNE HOUGHTON

Professor of Biology. A.B., Cornell University, 1902; Gamma Alpha Fraternity; Theta Chi Fraternity; Sigma Xi Fraternity; Phi Kappa Phi Fraternity.

THOMAS FRANKLIN MANNS

Professor of Plant Pathology and Soil Bacteriology. S.M., North Dakota Agricultural College, 1901; Ph.D., University of Pennsylvania; Phi Kappa Tau Fraternity; Sigma Xi Fraternity; Phi Kappa Phi Fraternity.

CHARLES CONGER PALMER

Professor of Bacteriology and Hygiene. D.V.M., Ohio State University, 1912; S.M., University of Minnesota, 1913; Sigma Phi Epsilon Fraternity; Alpha Psi (Medical) Fraternity; Phi Kappa Phi Fraternity.

RAYMOND WALTER HEIM

Professor of Agricultural Education. S.B., Pennsylvania State College, 1913; A.M., Columbia University, 1920; Phi Beta Kappa Fraternity; Phi Kappa Phi Fraternity.

THOMAS ALEXANDER BAKER

Professor of Animal Husbandry. S.B., Cornell University, 1914; Alpha Zeta Fraternity; Gamma Alpha Fraternity; Phi Kappa Phi Fraternity.

GEORGE LEE SCHUSTER

Professor of Agronomy. S.B., Ohio State University, 1916; S.M., Ohio State University, 1918; Phi Kappa Phi Fraternity.

LOUIS RHEINHOLD DETJEN

Associate Professor of Horticulture. S.B., University of Wisconsin, 1909; S.M., North Carolina State College, 1911; Alpha Zeta Fraternity; Phi Kappa Phi Fraternity.

CHARLES RAYMOND RUNK

Assistant Professor of Agronomy. S.B., Ohio State University, 1919; S.M., University of Delaware, 1923; Delta Theta Sigma Fraternity.

ARTHUR EDWARD TOMHAVE

Instructor in Animal Husbandry. S.B., Pennsylvania State College, 1921; S.M., University of Delaware, 1923; Alpha Zeta Fraternity.

JOY HAROLD CLARK

Instructor in Horticulture. S.B., Purdue University, 1921; S.M., University of Delaware, 1923; Alpha Zeta Fraternity.

HENRY RAYMOND BAKER

Instructor in Biology. S.B., Massachusetts Agricultural College, 1920; S.M., University of Delaware, 1924; Kappa Gamma Phi Fraternity.

GEORGE FRANKLIN GRAY

Instructor in Horticulture. S.B., Pennsylvania State College, 1922; S.M., Pennsylvania State College, 1924; Phi Lambda Theta Fraternity.

THE BLUE HEN



DEPARTMENT OF ENGLISH

WILBUR OWEN SYPHERD

Professor of English. A.B., Delaware College, 1896; S.B., University of Pennsylvania, 1900; A.M., Harvard University, 1901; Ph.D., Harvard University, 1906; Sigma Phi Epsilon Fraternity; Phi Kappa Phi Fraternity.

GEORGE ELLIOTT DUTTON

Professor of English. A.B., Delaware College, 1904; A.M., Harvard University, 1911; Kappa Alpha Fraternity; Phi Kappa Phi Fraternity.

FINLEY MELVILLE KENDALL FOSTER

Associate Professor of English. A.B., New York University, 1913; A.M., New York University, 1914; Ph.D., Columbia University, 1918; Theta Chi Fraternity; Phi Beta Kappa Fraternity; Phi Kappa Phi Fraternity.

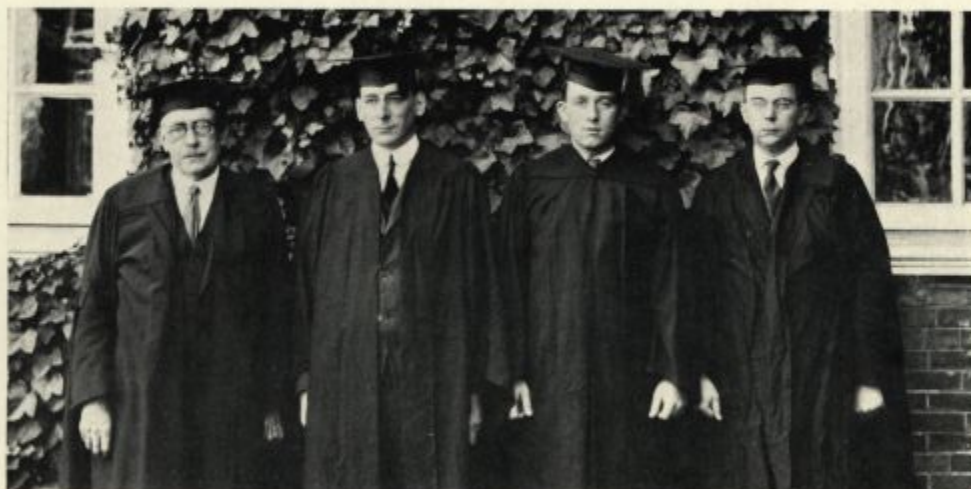
ERNEST CANFIELD VAN KEUREN

Assistant Professor of English. A.B., Cornell University, 1920; A.M., Harvard University, 1924.

HENRY CLAY REED

Instructor in English. A.B., Bucknell University, 1922; Sigma Alpha Epsilon Fraternity.

THE BLUE MEN



DEPARTMENT OF CHEMISTRY

CHARLES LYNDALL PENNY

Professor of Chemistry. A.B., Bucknell University, 1879; A.M., Bucknell University, 1882; Sc.D., Bucknell University, 1898; Phi Kappa Phi Fraternity.

ROY THADDEUS WHITNEY

Instructor in Chemistry. S.B., Middlebury College, 1915; S.M., Middlebury College, 1923.

ALBERT SHERMAN EASTMAN

Professor of Chemistry. S.B., University of Vermont, 1905; S.M., University of Vermont, 1911; Ph.D., Princeton University, 1916; Delta Sigma Fraternity; Phi Kappa Phi Fraternity.

PURNAL LYNCH McWHORTER

Instructor in Chemistry. S.B., University of Delaware, 1924; du Pont Scholarship, 1925; Kappa Alpha Fraternity; Phi Kappa Phi Fraternity.

THE BLUE MEN



DEPARTMENTS OF HISTORY, BUSINESS, EDUCATION AND SOCIAL SCIENCES

WILLIAM LLOYD BEVAN

Professor of European History. A.B., Johns Hopkins University, 1886; A.M., Columbia University, 1889; S.T.B., General Theological Seminary, 1891; Ph.D., University of Munich, 1893; Alpha Tau Omega Fraternity; Phi Kappa Phi Fraternity.

GEORGE HERBERT RYDEN

Associate Professor of American History and Political Science. A.B., Augustana College, 1909; A.M., Yale University, 1911; Phi Kappa Tau Fraternity.

HENRY CLAY REED

Instructor in History. A.B., Bucknell University, 1922; Sigma Alpha Epsilon Fraternity.

OSCAR JOE MERRELL

Professor of Economics and Business. S.B., John Tarleton College, 1908; A.B., University of Texas, 1911; A.M., University of Texas, 1912; C.P.A., University of Wisconsin, 1921.

WILLIAM ALBERT WILKINSON

Professor of Psychology and Education. S.B., University of Missouri, 1910; A.M., University of Missouri, 1911; Phi Delta Kappa Fraternity; Phi Kappa Phi Fraternity.

EZRA BRECKINBRIDGE CROOKS

Professor of Philosophy and Social Sciences. A.B., Central College, 1899; A.M., Vanderbilt University, 1901; Ph.D., Harvard University, 1910; Sigma Alpha Epsilon Fraternity; Phi Kappa Phi Fraternity.

THE BLUE MEN



DEPARTMENTS OF ANCIENT AND MODERN LANGUAGES

ELISHA CONOVER

Professor of Ancient Languages and Literatures. A.B., Dickinson College, 1884; A.M., Dickinson College, 1887; Kappa Phi Fraternity; Phi Beta Kappa Fraternity; Phi Kappa Phi Fraternity.

WILLIAM MORRISON PATTERSON

Associate Professor of Modern Languages. A.B., Vanderbilt University, 1899; Ph.D., Columbia University, 1916; Delta Kappa Epsilon Fraternity; Phi Beta Kappa Fraternity.

GEORGE ELDER BRINTON

Assistant Professor of Modern Languages. Ph.D., Franklin and Marshall College, 1913.

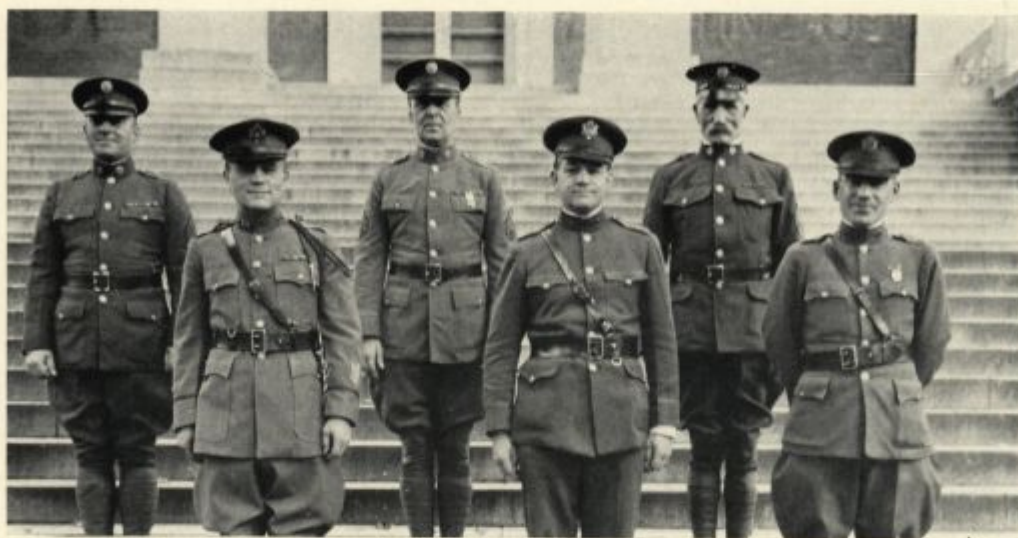
RAYMOND WATSON KIRKBRIDE

Assistant Professor of Modern Languages. S.B., Westminster College, 1916.

REINHOLD EUGEN SALESKI

Assistant Professor of Modern Languages. A.B., Harvard University, 1911; A.M., Harvard University, 1917; Ph.D., University of Freiburg, 1924.

THE BLUE HEN



DEPARTMENT OF MILITARY SCIENCE AND TACTICS

ARTHUR UNDERWOOD

Professor of Military Science and Tactics. United States Military Academy, 1909; Major of Infantry, United States Army.

ROY SPARKS

Associate Professor of Military Science and Tactics. Captain of Infantry, United States Army; Sigma Phi Epsilon Fraternity.

WILLIAM PITT MORSE

Associate Professor of Military Science and Tactics. Captain of Infantry, United States Army.

JOHN FRASER

First Sergeant. United States Army, Retired.

CHARLES GEORGE GREENE

Technical Sergeant. Infantry, D.E.M.L.

EDWARD ARDEN DAVIS

Staff Sergeant. Infantry, D.E.M.L.



GEORGE ABRAHAM HARTER, M.A., Ph.D.
PROFESSOR OF MATHEMATICS

Doctor Harter was born near Leitersburg, Washington County, Maryland. Upon his graduation from St. John's College in 1878 he was made Assistant Professor of Latin and Mathematics, and the same year he did post-graduate work in English and Mathematics. At St. John's he received the degrees of M.A. and Ph.D. From 1880 to 1885 he was principal of the High School at Hagerstown, Maryland. In 1885 he was elected Professor of Mathematics and Modern Languages at Delaware College. From 1888 to 1896 he was Professor of Mathematics and Physics. Upon the resignation of Dr. Raub, in 1896, he was called to the presidency, which he held until he resigned in 1915. Since then he has been head of the Mathematics Department. He is a member of the Sigma Nu and Phi Kappa Phi Fraternities.

THE BLUE MEN



Roger A. Taylor



Paul R. Rindard



Francis R. Warner



John R. Muhlig

THE BLUE HEN '25 STAFF '26



John W. Walker



Cornelius A. Tilghman



Ralph W. Gregg



Marvin L. Ewing



John T. Ash Jr.



A. Albert Simon



Raymond R. Pippin



Paul Leahy



Jay C. Eyer



E. Filson Carmichael



Ira C. Ellis

The "Blue Hen" Staff

Editorial Staff

PAUL R. RINARD
Editor-in-Chief

ROGER W. TAYLOR
Art Editor

Associate Editors

J. ROBERT MUHLIG

PAUL LEAHY

Photograph Editor

RALPH W. GREGG

Staff Stenographer

IRA T. ELLIS

General Staff

JOHN W. WALKER

J. COURTLAND EYER

MURRAY HANSON

ROBERT McLUCAS

RAYMOND R. PIPPIN

MARVIN L. EWING

CORNELIUS A. TILGHMAN

JOHN MORRIS

WILSON GRAHAM

MITCHELL H. SMITH

J. EARL PRYOR

Business Staff

FRANCIS R. WARNER.....*Business Manager*

ALBERT L. SIMON.....*Advertising Manager*

W. JEFFRIES LANK.....*Treasurer*

JOHN T. ASH.....*Circulation Manager*

E. FILSON CARMICHAEL, *Assistant Advertising Manager*

