

green; beaver
royal purple and
beach tones for
gold; old rose,
a sport car in
with bright green
car in jade and
buildings of black
own car in shades
green wheels; a
million and cream,

CE!
RBER SHOP
d on the
Main St.
Drug Store

Radio

Satisfaction
by the ear

ork of Kolster
the tone is

io Store
J. FOX
Atwater Kent

HOUSE

ORLD

COMEDY

TH

DIER

TRE

D NEWS

Meeting

The Newark Post

VOLUME XVII

NEWARK, DELAWARE, WEDNESDAY, JANUARY 12, 1927

NUMBER 50

Governor Urges Economy, Efficiency

Message of Governor to Legislature Is Reduced Taxes, Increased Efficiency

In his message to the first session of the 1927 General Assembly, delivered on Monday, Governor Robinson stressed the issues of economy and efficiency in legislation. He urged a decrease in State taxes and pointed out that taxes might be reduced by cutting road bonds. He commended the work of various State departments and suggested that in certain departments additional funds and equipment should be made available. The State budget for the biennium ending July 1, 1927, was read to the General Assembly at noon, Monday, and the Governor reduced the estimates on many of the estimates, the most important of these being the estimates for the next two years.

The full text of the Governor's message is as follows:

GOVERNOR'S MESSAGE

Members of the General Assembly of Delaware: Obedience to the constitution of the State of Delaware which requires the Governor to give to the General Assembly information relative to the condition of the state and the recommendations which he may deem expedient, I beg to submit this, my message: We are the servants of the people by and through you, as you levy taxes, appropriate the public money for laws for physical, moral and educational welfare, will the people of Delaware be benefited. The people of the state are looking to you to perform your duties with wisdom, justice and patriotism and I am confident you will act with profound consciousness of the great responsibility which rests upon you.

It is estimated that the surplus of the State, available for meeting current bond liquidation and for the agency of increased expenditures, will be \$5,941,991.85 as of July 1, 1927. If all requests for bonds were allowed, this surplus would increase to only \$6,706,899.31 as of July 1, 1929. We must remember that this surplus must also be used to retire current bonds coming due in 1927 and that by 1932, more than \$718,000 will be needed for retirement of bonds.

(Continued on Page 2.)

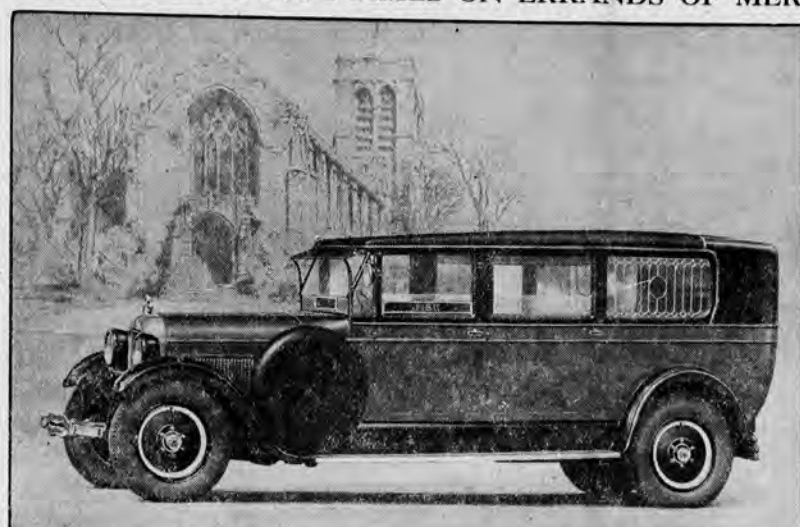
High School Team At Corn Show

Newark High School will make a bid to win the second leg of the Corn Judging Cup, when they compete at the Delaware Corn Growers' Show, at Middletown, Friday. This judging contest is open to all high schools in the state having an agricultural department, and the cup is permanently to the team winning three times. Newark won it the first year.

WAR P. O. SHOWS INCREASE IN REVENUE

The Newark Post Office, in its report for the last quarter, ending December 31, 1926, showed the largest increase in its history. The increase for December, 1926, was \$34, per cent. The increase for the quarter, as compared with the corresponding quarter of the previous year, was \$1,000, or 10 per cent. The increase for the year, as compared with the corresponding year of the previous year, was \$3,000, or 30 per cent. The increase for the year, as compared with the corresponding year of the previous year, was \$3,000, or 30 per cent. The increase for the year, as compared with the corresponding year of the previous year, was \$3,000, or 30 per cent.

THE NEWARK AMBULANCE WHICH HAS BEEN CALLED FORTY-SIX TIMES ON ERRANDS OF MERCY



The Newark ambulance, which has recently completed five months' service since it was delivered to the Ambulance Committee, has made in that time forty-six trips on errands of mercy, a number of them which undoubtedly were responsible for the saving of a human life. This is an average of over two calls a week that have been made at all hours of the day and night. A number of these trips have been for considerable distances—one to Baltimore, one to Milford, one to West Chester, Pa., and one, this week, to Lansdown, Pa.

The ambulance was delivered to the Ambulance Committee, consisting of J. R. Fulton, chairman; Warren Singles, N. N. Wright, H. Warner McNeal, D. L. McClintock and G. W. Rhodes, on August 5. The cost was \$3,705, fully equipped. \$2,500 of this had been raised by contributions from firms and individuals in the community. There is \$1,200 still due in payment on the machine, a portion of which is covered by pledges of subscriptions. There have been a number of contributions to the ambulance fund made at the time of trips, but these have generally not more than paid the expenses of the journey. One of the last contributions received was that of Mrs. Oscar Elliott's Sunday School class of 12 little girls in the Methodist Church. They voted to give their "White Christmas" offering to the ambulance fund. Additional funds are needed and subscriptions may be paid to Warren Singles, who acts as treasurer for the fund. The Aetna Fire Company has assumed the upkeep and running expenses of the machine and has furnished drivers from among its members.

There have been seven members of the Fire Company who have placed their skill and time available to the community for ambulance duty, gratis. There are generally two men in attendance on each trip and duty requires not only the driving of the machine on the call, but washing it and putting it in readiness for the next call on the return from the trip. These men who have given their service so unselfishly are: William Clancy, Ira Shellender, Horace Null, William Cunningham, Alfred Ewing, Walter Powell, and Thomas Sprogel.

Aetna Bowling League Opened Last Night

Last night at the fire house, the Aetna Bowling League got off to a good start, all four teams in the league playing three games each. The Fire Company team won from the Business Men's team 2 games to 1, and the Continental Fibre Company won from the Curtis and American Company's team, 2 games to 1.

The scores:

Team	Score
Tasker	190
Crowe	170
Sprogel	152
Schaeffer	164
Shellender	97
Total	773

Business Men

M. Ewing	126
P. Ewing	154
Herdman	167
Mote	149
Baylis	132
Total	728

Second game won by Business men, 668 to 629 pins. Third game by Fire Company, 725 to 675 pins.

FIRST GAME Continental Fibre

Ramsey	166
Hopkins	198
Jackson	128
Hancock	123
Smith	126
Total	744

Curtis and American

Durnall	139
Steele	153
Hill	147
Cornog	111
Cornog	128
Total	688

The second game went to the Continental by 771 to 761 pins, and the third to Curtis and American by 717 to 702 pins.

Friday night, the Fire Company will bowl the Continental Fibre team and the Business Men will oppose the Curtis and American Companies, three games each.

Poultry Show Winners Chosen

Judging Last Night, 53; Exhibitors Show 512 Birds

Last night Newton Cosh and his son, J. Melvin Cosh, of Vineland, N. J., judges for the Tri-State Poultry Show, made their final selections for prizes. There were 512 birds, exhibited by 53 exhibitors, from 4 states. Victor R. Bennett, of Elkton, exhibiting Barred Rocks, received the silver cup for the best display.

W. E. Renshaw, of Newark, was awarded the chest of 26 pieces of silver for the best cockerel and pullet in the show.

The Tri-State Poultry Association takes in Delaware, Maryland and Pennsylvania and holds their show annually in the Armory, Newark. The officers of the association are Samuel Little, Newark, president; Willard Cloud, of Landenberg and Sterling Evans, of Elkton, vice-presidents; N. J. Lanham, Elsmere, secretary; executive committee, Samuel Little, Clyde Robinson, C. W. Mumford and H. S. Palmer, Newark; L. S. Fell, R. L. Cloud, Wilmington; N. J. Lanham, Elsmere; R. L. Price, W. J. Moody and V. R. Bennett, of Elkton. The superintendents of the show are Wilmer E. Renshaw and Clyde Robinson, of Newark.

The show is open from 10.00 a. m. to 10.00 p. m. and closes Saturday night. So far there has been a good attendance, and now that the ribbons have been awarded, more are expected to assemble the birds. This morning various classes of the schools attended the show.

There are bench birds exhibited by exhibitors and were judged for conformation and quality rather than egg records.

LIST OF PRIZE PRIZES

Barred Rocks—Cock, Jesse D. Goss; Hen, V. E. Bennett; Cockerel, V. E. Bennett; Pullet, V. E. Bennett. Light Barred Rocks—Cock, V. E. Bennett; Hen, V. E. Bennett; Cockerel, N. Renshaw; Pullet, N. Renshaw. White Rocks—Cock, O. E. Bell; Hen, J. Jackson; Cockerel, J. Jackson; Pullet, W. C. Mathews. Buff Rocks—Cock, W. B. Jordan; Hen, W. B. Jordan; Cockerel, H. W. Connor; Pullet, H. W. Connor.

G. S. Williams at P.T.A. Meeting

Mr. George S. Williams, of Dover, president of the State Board of Education, was the speaker at the January meeting of the Parent-Teacher Association, held in the High School auditorium last night.

Mr. Williams, in his address, said that he felt it his first duty to personally inspect every department and part of every school in the state. He said that many of the schools in rural Delaware were built in revolutionary times, and that physicians had directly traced poor eyesight of pupils to the poor lighting in many of these country school buildings. Many pupils below the fourth grade are obliged to sit with feet dangling from the floor because their seats, built for adults, cannot be adjusted. One of the most pressing problems of the state, Mr. Williams said, was to see that suitable buildings were erected where most needed. His primary interest, he said, was to see that Delaware students received equal chances for education that pupils in other states had. He added that he hoped the Legislature would see fit to pass an appropriation large enough to retain the excellent teachers that Delaware has, instead, as in the past, of making Delaware training ground for other states.

Mr. Williams, in opening his speech, paid feeling tribute to the memory of Everett C. Johnson.

After Mr. Williams' talk, Mr. A. D. Cobb led community singing and then obliged with several solos in his usual pleasing voice. An instrumental quartette, composed of Professor Brinker, Mr. McManamin, Miss Virginia Lee Bell and Miss Anna Osborne, gave the "Barcarole" from "Tales of Hoffman." Refreshments were then dispensed by the Social Committee.

Mr. Williams was the guest overnight of Professor E. R. Thoroughgood, and this morning addressed the Junior and Senior High School combined assemblies. He voiced his confidence in modern youth, and said it was his observation that the boys and girls of today were just as good as they were in generations gone by.

PATIENT DIES

Frank Hall, colored, late residence New London avenue, who was taken to Homeopathic Hospital in Newark ambulance, died last Friday of pneumonia.

Aetna Fire Co. Holds Election

Elmer J. Ellison Re-elected Chief; Fire Recorder Reports 68 Calls In 1926, 23 In Town

At a meeting held in the Fire House, Friday night, the Aetna Fire, Hook and Ladder Company held its annual election, and heard the annual report of the Fire Recorder.

E. J. Ellison was unanimously re-elected to succeed himself as Chief, and Walter Powell and Charles Tasker were unanimously elected first and second assistant chiefs, respectively. Charles Eisner was chosen as Fire Recorder to succeed F. M. Lutton. B. F. Devonshire was chosen Chief Pipeman, with William Clancy, Harlan Tweed, William Bolton, F. M. Smith and Alfred Ewing as assistants.

Under a change of by-laws, there were chosen, this year, nine directors instead of five, as was the former custom.

Directors elected to serve three years were: Warren Singles, J. R. Fulton and A. L. Beals. Directors elected to serve two years were: N. N. Wright, Daniel Stoll and George W. Rhodes. Directors elected to serve one year were: Guy Hancock, G. I. Durnall and H. Warner McNeal. On Monday night, at a directors' meeting, the directors elected from their number, Arthur L. Beals, president; G. I. Durnall, vice-president; G. E. Hancock, secretary, and Warren Singles, treasurer. They voted against the proposition suggested by the Smyrna Fire Company that a real estate tax of 5 cents on \$100 be assessed for support of the fire company.

Ira Shellender was elected Chief Engineer.

Fire Recorder F. M. Lutton, in his report for the year 1926, pointed out that the alarms in 1926 had exceeded those in 1925 by only 7 and that the percentages of out-of-town and town calls were about the same for both years. The number of alarms responded to in 1926 was 68.

Mr. Lutton reported that the fire loss, in fires within the town, could be easily covered by \$1,000, an unusually small sum for a town the size of Newark, and which speaks eloquently for the speed and efficiency of the local company.

There were 23 local calls and 45 out-of-town calls responded to. The Aetna Company responded to serious fires in Elkton last year; the Howard House fire, where the Newark engine pumped continuously for seven hours, and the fire a month or so ago that destroyed several dwellings and took four hours' work to subdue. The Aetna Company also lent its assistance in pumping out a quarry near Hockessin in an attempt to recover the body of a boy who had drowned there.

The summary of Mr. Lutton's report is as follows:

"Of the 68 alarms that the Company responded to during the year, 45 were outside calls and 23 inside town limits, showing 66 per cent of the calls were for outside service. Compared with the previous year the Company responded to 61 alarms in 1925, of which 40 were for outside service and 21 inside the town, showing very nearly the same percentage.

"The fire loss inside the town was very small, \$1,000 fully covering all damage.

"Of the alarms responded to, 16 were night calls. The fires divided as follows: Chimney—23; Field—15; Dwellings—6; Barns—4; Sheds and outbuildings—6; Rubbish fires—2; Mushroom House—1; Hotel (Howard House)—1; Quarry—1; Factory fire—1; Paving plant—1; Automobile—3. Total—68."

CIVIL SERVICE EXAMS TO BE HELD SATURDAY

On Saturday at 9.00 a. m. at the new High School building, Civil Service examinations will be held for positions of clerk-carrier. There are 16 who have applied to take this examination. Both men and women are eligible for these positions.

NEW ENGLAND CLUB MEETS

The New England Club will hold its January meeting on Tuesday evening, January 18th, in the Episcopal Parish House, to which all persons born in New England are cordially invited.

Edwin Markham Guest Of University, Today

Famed Author Of "The Man With The Hoe," Speaker At "College Hour," Will Lecture To "Forum" This Afternoon

Edwin Markham, poet, philosopher, orator and intellectual leader, is the guest today of the University of Delaware. In fact, he visited Newark last night, when he stopped, enroute from Washington to Wilmington, to be the guest of Dean Robinson of the Women's College, for dinner. After dinner he was driven to Wilmington by Dr. C. L. Benner, where he delivered a lecture at the New Century Club, at 8.30. Last evening Dean Robinson invited Dr. and Mrs. C. L. Benner and Professor and Mrs. Grant Hyde Code to meet Mr. Markham at dinner.

This morning at "College Hour" held in Wolf Hall at eleven o'clock, Mr. Markham was the speaker. He read some of his own poems and charmed his audience with his delightful observations on life and letters. This afternoon at four o'clock, he will speak at the "Forum" at the Women's College. Mr. Markham was entertained at lunch by Mrs. Walter Hulihan. The other guests were Mrs. Beacom and Mrs. Fell of the Wilmington New Century Club, Dean Robinson, Dr. and Mrs. Benner and Dr. Sypherd.

Edwin Markham, who is the last of the California poets, is in his seventy-fifth year, but still retains the vigor and magnetism that has endeared him to countless audiences who have heard him, and the millions who know him only through his printed word. He gained attention as a poet late in life, when suddenly, in 1899, a new force surged through him, a sense of outrage at the inequality of human struggle which he expressed in that inspiring and sonorous poem, "The Man With The Hoe." He took his title and inspiration from Millet's painting, and made, through his poem, the broken browed French peasant a symbol of the poverty stricken toiler in all lands. This work gained for him immediate recognition and "The Man With The Hoe" has been translated into all languages. It still stirs the masses and is regarded by many as the "Bible of the next thousand years."

From that time Markham was re-

(Continued on Page 8.)

Three Slight Fires During Week

During the last week the Aetna Fire Company responded, with apparatus, to three alarms. In all cases, the fires were quickly subdued due to the quick arrival of the company.

On Friday morning they were called to put out a field fire along the Pennsylvania Railroad tracks. The railroad company had been burning brush and the fire had gone beyond their control. This was extinguished without any loss to property. William Stiltz drove the engine.

On Sunday, about 6.45 p. m., they were called to extinguish a fire, caused by an overheated chimney, which was burning the side of the house of T. D. Smith on Bella Manor. This fire was quickly put out, the damage amounting to about fifty dollars. William Cunningham operated the engine on this call.

Yesterday the company was called to put out a field fire back of the residence of J. P. Wilson on Main street.

STOCKHOLDERS MEET

At a meeting of the stockholders of the Farmers Trust Company of Newark, held yesterday in the new bank building, the old board of Directors was re-elected to serve another term. At a meeting next week, an election of officers will be decided.

Mr. Daugherty, treasurer, reports that in the first week of January, one hundred new accounts were opened.

ENGAGEMENT ANNOUNCED

Friends here have received the announcement of the engagement of Eugene H. Kennedy, son of Mr. and Mrs. W. H. Kennedy, of this town, to Miss Muriel E. Eddy, of Bayonne, New Jersey. Mr. Kennedy is at present located in Pittsburgh. The date of the wedding has not been announced.

Governor Urges Economy, Efficiency

(Continued from Page 1.)
State Highway Department

In these days of haste and bustle when most of us are hurrying to get somewhere in order to get back so that we may go elsewhere, nothing contributes to our pleasure and comfort like good roads.

Not only is our pleasure to be considered, but our business demands that good roads be built. During the past two years, the State, through the activities of our highway department, has built 167.9 miles of improved roads, providing to date a system composed of 576 miles of hard surfaced highways, equal to 16 1/2% of the total road mileage in the State and has completed two important bridges—one at Seaford and one at Rehoboth; two others are under construction, one over the Broadkill river in Sussex county and the second, the South Market street bridge, Wilmington.

An ocean boulevard, extending from Lewes to the Maryland line is, perhaps, only a dream at the present time, but if such a road could be built, it would, without doubt, increase the value of the land adjacent thereto, most of which is the property of the State and eventually become a revenue producer for the State. Our highway department engineer has promised to investigate and report on the feasibility of such a road.

Sand asphalt roads, the building of which was begun during the summer of 1926, are regarded as successful. By the use of local sand, which constitutes approximately 93% of the construction material, it is possible to effect a saving, as compared with concrete, of about \$4,000 a mile.

The field of activity of the highway police force, which now numbers 32, has rapidly expanded. In addition to nearly 1,500 arrests made this year for violation of the motor vehicle laws, they were called upon to make nearly 300 arrests for infractions of other state laws. In checking against overloads on the highways, more than 18,000 trucks were weighed during the first 11 months of 1926. It would seem wise to increase their number to about 40 and maintain a station on the Wilmington-Newark highway.

The department is to be commended for the forward step it has taken in widening certain of our main highways.

Health Department

The work of the Board of Health in immunizing our children against diphtheria is to be commended—Seventy-two hundred children have been immunized against this dreaded disease since last May and the work is still going on.

On July 1st, 1925, Brandywine Sanitarium was taken over by the State and has been completely renovated and bed space almost doubled.

Better control of contagious diseases should be brought about.

Office of the Secretary of State
The business of the State has grown to such proportions that the office of the Secretary of State is in need of additional funds for clerical help and supplies and I, therefore have recommended in the budget, an increased appropriation for this office.

Board of Agriculture

Delaware is largely interested in agriculture, the biggest business in the country and our Board of Agriculture is doing good work. The eradication of tuberculosis among cattle, while expensive, is commendable and should be continued.

Our poultry interests which have grown to such large proportions, demand the attention of a poultry expert in order to keep out diseases which are such a detriment to this industry. The state laboratory, plant pathologist and the Bureau of Markets, all of which are under the direct supervision of the State Board of Agriculture, are rendering a great service to the people of the State and should be encouraged and supported.

The shipping point inspection has grown from a small beginning to 600 cars during 1925 and, while the board is asking for an increase in their appropriation for this work, it must be remembered that the shippers pay a fee for this work, which is turned into the state treasury and the work is thus, normally, self-supporting.

Schools

Our school situation has been much improved during the past few years, but is still far from being satisfactory. While some of our citizens are inclined to think that the one-room school and control by a local school board are best suited to our needs, I am convinced that our State School Board has done and is doing good in consolidating our schools. Only in some very isolated or special cases should we consider going back to the schools of our grandparents. I am inclined to think that the proposed plan of the board to spend one million dollars in each of the next two years

in building new schools or rebuilding those now in existence is a good one. With a surplus in the school fund of some \$2,400,000, funds which in accordance with our present laws cannot be used for any other object than schools, I can see no reason why we should not build and "pay as we go" rather than bond the State for any further amount, a procedure to which I am opposed. If the General Assembly should authorize the spending of this part of the surplus, they should authorize the Governor to appoint a "Building Commission" to work in conjunction with the present school board.

Our university at Newark which includes the college for women, is making great strides in the right direction and the enrollment this year is the largest in the history of the institution. No curtailment of the activities of these two institutions should be considered, but rather, everything possible should be done to bring them to a higher standard.

State House Annex

The General Assembly of 1925 set up an appropriation of \$150,000 for the building of an addition to the State House, for office purposes. This addition to the State House has been built, and the expenditure kept within the amount appropriated.

The business of the State has grown with such rapid strides that we are still unable to properly house the officers and employees. I would recommend that in the very near future, the Assembly take into consideration the building of a wing on the north side of the present State House, in which we might provide adequate meeting and committee rooms for both the Senate and the House of Representatives. I am well aware that this would cost \$250,000 to \$300,000, but we can well afford it.

Fires at Hartly

A distressing situation has arisen at Hartly, where a number of fires have occurred and, although strenuous efforts have been made to locate the person or persons who have caused such fires, no definite results have been obtained.

The Attorney-General has used every means at his command to locate the guilty parties, but without success. The unusual demand upon his funds has depleted his resources to a very considerable extent. I recommend that a special appropriation of at least \$3,000 be made to his office.

Taxation

Taxation is a subject which has been discussed by men from the beginning of time. No one welcomes the tax bill, but it is inevitable that taxes must be paid in order that our county, State and Federal governments may continue to function. Efforts are continually being made to reduce taxes and, while the Federal government has made some little progress, those of the State seem to increase rather than decrease. No legislation should be enacted at this session which would tend to increase them in the least.

A proposition has been made which seems to have some merit, that the State take over the county road bonds, maturing in each county during the next two years. Some \$100,000 in each of the two lower counties and \$215,000 in New Castle county, or a total of

\$315,000, these bonds to be paid from the surplus in the general fund, which is now about \$3,000,000. This would result in a reduction of the tax rate on real estate in New Castle county of about 5 1/2% on each \$100 of assessed valuation, 13 1/2% in Kent county and 15 1/4% in Sussex county. This would certainly be some relief to our agricultural interests. It seems to me that this proposition is a reasonable one and will not impair our surplus to a danger point. The proposition that the State take over all the county bonds is impractical and should not be considered.

State Hospital at Farnhurst

The method of taking care of our unfortunate insane at Farnhurst has been wonderfully improved and I feel that that institution ranks well with any like place in the country. Every attention and comfort is given the inmates and we feel that the money necessary for its upkeep is being well and economically used by its board of trustees.

One of the most valuable acts on the statute books of our State is the sterilization law. Some 30 patients have been operated upon at Farnhurst and these cases, after operation, can be returned to their homes, thus relieving the congestion at the hospital and perhaps obviating the necessity of new buildings.

Delaware Safety Council and Governor's Advising Committee

This body, though not receiving State aid, will no doubt present for your consideration, some matters which are of vital importance. When we consider the great number of accidents, many of them fatal, as well as the great economic loss which our country and state sustains each year, it behooves us to pause and consider what we may do to prevent the ever-increasing loss of life and property.

A very successful conference on street and highway safety was held in Dover a short time ago. Well on to 1,000 persons attended this meeting, showing beyond a doubt, the intense interest in the subject of safety.

Home for Feeble-Minded at Stockley

This institution is in excellent condition, especially so when we note the short time it has been in existence. The fact that the building erected for the use of colored girls shelters only two inmates, is rather deplorable, but conditions will probably change within the next year or two. Additional funds are badly needed to employ at least one more instructor.

Industrial School for Girls

The Industrial School for Girls,

near Claymont, as well as the Industrial School for Colored Girls, near Marshallton, are functioning in a most satisfactory manner at the present time. Of course, both institutions would like to have increased appropriations, claiming, and reasonably so, that better work could be done if more money could be available.

Armory Commission

The Armory Commission as appointed by the last General Assembly was delegated to build two armories—one at Laurel and one at Wilmington. The one at Laurel has been completed and will be turned over to the State in a very short time.

Owing to circumstances beyond the control of the commission, it has been impossible to build the one at Wilmington. However, the site has been selected and bought and architects have been invited to submit plans, so that now we have very good expectations of seeing the Wilmington armory completed during this year.

Forestry Commission

The General Assembly of 1925 authorized the Governor to appoint a commission to be known as the Forestry Commission, whose duties should be to look into the subject of forestry in our State and make a report to the next General Assembly. This commission, though without funds, has worked throughout the past two years and will present a report and recommendation to you.

Conclusion

In my budget recommendations, I have tried to recommend the lowest appropriations consistent with efficiency. I have felt that I must recommend in the budget an amount sufficient for each authorized activity and so, because of the increased cost of living, and the larger number of inhabitants of our institutions, some amounts, as recommended, are somewhat larger than in former years.

All that can be done by legislation for the welfare of Delaware, is within your power to do and the opportunity for service is yours. You are to be congratulated upon being a part of this God-fearing commonwealth and upon having been given the privilege of making and revising its laws.

ROBERT P. ROBINSON,

Governor.

VICTOR RECORDS!
NEWARK RADIO STORE

The Hardware Man of Newark



A full and complete line of

New Galvanized Ware

All sizes in

Wash Tubs Buckets

THOMAS A. POTTS

Phone 228

Low-cost Transportation

Star Cars

Built by Durant Motors

IMPROVED STAR FOUR

Roadster . . . \$525 Coupester . . . \$610
Touring . . . \$525 Coach . . . \$695
Sedan . . . \$795

NEW STAR SIX

Chassis . . . \$620 Coupe . . . \$820
Touring . . . \$695 Coach . . . \$880
Coupester . . . \$745 Landau Sedan \$975

Prices f. o. b. Lansing

Show Time is Good Comparison Time

Compare all small cars with Stars for looks, power, speed and interior room—then ask us for a ride, and drive it yourself. The dollar for dollar value is there.

RITTENHOUSE MOTOR CO.
SOUTH COLLEGE AVENUE

AMERICAN STORES CO.
AMERICAN

A Good Habit

for every Home-keeper is the careful reading of all our advertisements. Thousands upon thousands of the Best Home-Makers in four States look for our advertisements every day as they do their morning Newspaper. The reason is self-evident because they know our advertisements are lessons in economy and better living. We are constantly adding unusually attractive values to our already low prices, so that every woman who wants to conduct her household on an economical, efficient basis should read our advertisements regularly.

It pays to buy all your Table Needs in our Stores Where Quality Counts & Your Money Goes Furthest!

The Finest Grown in Santa Clara Valley!

Reg. 12 1/2c Extra Fancy Calif. Prunes 10c
Large, fleshy fruit. Sun cured, small pits, delightful flavor.

Reg. 9c ASCO Beans with Pork 3 cans 20c
High in food value, very nourishing—and always ready to serve.

ASCO California Peaches Big can 23c
Large, luscious Yellow Peaches in rich sugar syrup.

Reg. 10c Tender Sweet Peas 3 cans 25c

Best Soup Beans 9c
Calif. Lima Beans 10c
Dried Kidney Beans 12 1/2c
ASCO Whole Rice 13c
Rich Creamy Cheese 33c

Reg. 10c Sunrise Tomato Catsup 3 bots 25c
A good quality Catsup at a very low price.

ASCO Corn Starch 7c
ASCO Evap. Milk 11c
Princess / pple Butter 10c
Eagle Cond. Milk 19c
Gold Seal Oats 3 pkgs 25c

Reg. 10c Sweet Sugar Corn 3 cans 25c

ASCO Coffee 42c
Its fragrant aroma and delicious flavor wins everyone with the very first sip.

WE HAVE A BLEND FOR EVERY TASTE

ASCO 1/4 lb pkg 17c
Teas 65c
Orange Pekoe, India Ceylon, Old Country Style.

ASCO Teas 1/4 lb 55c
Plain, Black or Mixed.

Pride of Killarney Tea 75c

Made just like Mother used to make the delicious bread that won your heart and appetite.

Bread Supreme 10c
Big, rich milk loaves.

Victor Bread 7c
Pan Loaf

Gold Seal Flour 12-lb bag 59c
The ideal family flour for every baking purpose.

Old Dutch Cleanser 3 cans 20c

ASCO Pure Preserves 23c
Princess Jellies 3 tumbler 25c
ASCO Pure Jellies 2 tumbler 25c
Orange Marmalade 19c
Pure Apple Sauce 2 cans 25c

Red Ripe Tomatoes 3 cans 25c

ASCO Sliced Bacon pkg 23c

Prim Rice 3 pkgs 25c

Meat Specials for the Week-End!

BIG FRESH PORK SPECIAL

Pork Loin Center Cuts
Whole or Half Pork Loins
lb 28c lb 35c

EXTRA SPECIAL

Genuine Imported Sweitzer Cheese 1/2 lb 25c

Stewing Chickens lb 40c

Case's Pork Pack Whole or Sliced 35c

FINEST CORN-FED BEEF

Round Steak lb 35c Rump Steak lb 38c

Round Roast lb 35c Thick End Rib Roast lb 24c Rump Roast lb 38c

Sirloin Roast lb 50c Best Standing Rib Roast lb 35c

GENUINE SPRING LAMB

Legs Lamb 35c Loin Chops 48c
Hind Quarters Lamb 35c

Trade with certainty in Your Nearest ASCO Store Where Your Money Goes Furthest!

These prices effective in our Newark stores

Appleton
Miss Grace McMullen
week-end with her
Dayton, at Bear S
Miss Eva Smith and
surprised their frie
marriage in
The January meeting
Jeremiah Baker Cha
was held on Saturday
the home of Misses Ida
able.
The officers for 1927 we
the Grange meeting on
ladies served very d
ments after the insta
Miss Beulah Burko, of
1, is visiting her pare
Norman Burke.
Mr. and Mrs. Thomas
ughter, Miss Gertrude B
day afternoon with Mis
Kimbble.
Mr. Edgar Short and
Hill, Pa., visited 1
Mrs. A. D. Short
APPLETON WOMEN
The Appleton Women
monstration Club held
ing in the Club room
1926. The meeting was
president, Mrs. A. Bau
business session, t
turned into a Chris
the men and children.
arranged by the clu
gram: Song, by the Cl
Baby Elizabeth Otty
Marrella Howell and
reading, Miss M
ologue, Mrs. Elmer
Mrs. Chas. Burton
Orval Otty; recita
J. Smith; dialogu
and Miss M. Howel
Smith. The progr
by all. Each one p
ented with a gift.
The next meeting will
evening, January 19, a
the Club room. Hoste
Adams, chairman; Mr
ald, Mrs. H. R. Smith
son, Mrs. Gus Bla
bers are requested to
is election of officers
Mrs. W. Lofland, Pres
NEED MORE FORT
very country, foreste
old have one-third of
forests in order to mee
wood needs, says the F
of the United States I
agriculture. Our count
100,000 acres of virgin
with 250,000,000 ac
land, or a total of on
acres that are really v
er production. This i
of our total land area
addition to the woo
ings and other co
sands of articles, incl
sines and clothing, are
or lumber. Furtherm
ect game and give en
ers and vacationists.
and the washing away
heavy rains, and hel
is by holding back t
and rain water and
rain off slowly.
FOR ROLL FOR
HOWELL
ose making 100 per c
for December at Ho
ana Shelton, Walter Jo
Wilson, Walter Jo
aland, Herbert Price, I
Harmonson Reyno
e, Mrs. Ada B. H
ax: For Heaven's sak
the matter? Why,
man up!
flux: Oh, a chiropract
hundred dollars and
it out in trade.
the acoustion of your
ble!
sponse! It's the Chem
next door that you sme
Dr. Geo. B. Ri
Chiropract
57 Delaware Av
MONDAY, WEDNE
FRIDAY
6.30 to 8.30 P. M
PHONE 242-M
OPE
ONE DA

Appleton

Grace McMullen spent the week-end with her cousin, Mrs. J. D. Dayton, at Bear Station.

Eva Smith and Mr. Charles surprised their friends by announcing their marriage in Elkton.

The January meeting of the Cap. Jeremiah Baker Chapter, D. A. C. was held on Saturday, January 8, at the home of Misses Ida and Evelyn.

The officers for 1927 were installed at the Grange meeting on January 3. The ladies served very delicious refreshments after the installation.

Miss Beulah Burke, of Wildwood, is visiting her parents, Mr. and Mrs. Norman Burke.

Mr. and Mrs. Thomas Brown and daughter, Miss Gertrude Brown, spent the afternoon with Misses Ida and Evelyn Kimble.

Mr. Edgar Short and family, of Hill, Pa., visited his parents, Mr. and Mrs. A. D. Short recently.

APPLETON WOMEN'S CLUB

The Appleton Women's Home Demonstration Club held its regular meeting in the Club room December 1926. The meeting was opened by president, Mrs. A. Baus. After a business session, the meeting turned into a Christmas party for the men and children. The party was arranged by the club members. Program: Song, by the Club; recitation, Baby Elizabeth Otty; dialogue, Mabella Howell and Miss Mary; reading, Miss Mary Otty; dialogue, Mrs. Elmer Gallaher; Mrs. Chas. Burton; reading, Orval Otty; recitation, Miss J. Smith; dialogue, Miss M. and Miss M. Howell; reading, Smith. The program was ended by all. Each one present was given a gift.

The next meeting will be Wednesday evening, January 19, at 8 o'clock, in the Club room. Hostesses: Mrs. Adams, chairman; Mrs. Ida McCall, Mrs. H. R. Smith, Mrs. C. Olson, Mrs. Gus Blackson. All are requested to be present if it is election of officers. Mrs. W. Leland, Press Reporter.

NEED MORE FORESTS

Very country, foresters believe, still have one-third of its land area in order to meet its timber needs, says the Forest Service of the United States Department of Agriculture. Our country now has 100,000 acres of virgin forests, together with 250,000,000 acres of cut-land, or a total of only 388,000,000 acres that are really valuable for production. This is only one-fourth of our total land area. In addition to the wood used in buildings and other construction, thousands of articles, including even toys and clothing, are made from lumber. Furthermore, forests are game and give enjoyment to sports and vacationists. They also prevent the washing away of hillsides by heavy rains, and help to check floods by holding back the melting snow and rain water and allowing it to drain off slowly.

HOWELL SCHOOL

making 100 per cent attendance for December at Howell School.

Shelton, Walter Jewell, Eleanor Wilson, Walter Johnson, Ida Harland, Herbert Price, Louise Bid-Harmonson Reynolds, Edna Harland, Mrs. Ada B. Helmbreck.

For Heaven's sake, old man, why the matter? Why, you're all up!

Oh, a chiropractor owed me hundred dollars and I let him take it out in trade.

acoustics of your hall are terrible! It's the Chemistry Building next door that you smell.

Dr. Geo. B. Riegel

Chiropractor

57 Delaware Avenue

MONDAY, WEDNESDAY

FRIDAY

6:30 to 8:30 P. M.

PHONE 242-M

PHONE 242-M

PHONE 242-M

PHONE 242-M

PHONE 242-M

PHONE 242-M

PHONE 242-M

PHONE 242-M

PHONE 242-M

PHONE 242-M

PHONE 242-M

PHONE 242-M

PHONE 242-M

PHONE 242-M

PHONE 242-M

CHURCHES

Methodist Episcopal Church

Rev. Frank Herson, Minister

Services for Sunday, January 16:

10:00 a. m., Session of the Church School.

11:00 a. m., Morning worship and sermon. Subject: "The Acid Test."

6:45 p. m., Devotional meeting of the Epworth League.

7:30 p. m., Evening worship and sermon. Subject: "Playing the Fool."

Wednesday afternoon at 3:30, Junior Epworth League.

Wednesday evening at 8:00, mid-week devotional service.

Thursday afternoon at 2:30, monthly meeting of the Woman's Home Missionary Society.

Thursday evening at 7:30, monthly mark-up night for the Building Fund.

Saturday afternoon from 1-5, bake-in aid of ladies' building fund.

Saturday afternoon from 1-5, bake-in aid of ladies' building fund.

Saturday afternoon from 1-5, bake-in aid of ladies' building fund.

Saturday afternoon from 1-5, bake-in aid of ladies' building fund.

Saturday afternoon from 1-5, bake-in aid of ladies' building fund.

Saturday afternoon from 1-5, bake-in aid of ladies' building fund.

Saturday afternoon from 1-5, bake-in aid of ladies' building fund.

Saturday afternoon from 1-5, bake-in aid of ladies' building fund.

Saturday afternoon from 1-5, bake-in aid of ladies' building fund.

Saturday afternoon from 1-5, bake-in aid of ladies' building fund.

Saturday afternoon from 1-5, bake-in aid of ladies' building fund.

Saturday afternoon from 1-5, bake-in aid of ladies' building fund.

Saturday afternoon from 1-5, bake-in aid of ladies' building fund.

Saturday afternoon from 1-5, bake-in aid of ladies' building fund.

Saturday afternoon from 1-5, bake-in aid of ladies' building fund.

Saturday afternoon from 1-5, bake-in aid of ladies' building fund.

Saturday afternoon from 1-5, bake-in aid of ladies' building fund.

Saturday afternoon from 1-5, bake-in aid of ladies' building fund.

Saturday afternoon from 1-5, bake-in aid of ladies' building fund.

Saturday afternoon from 1-5, bake-in aid of ladies' building fund.

Saturday afternoon from 1-5, bake-in aid of ladies' building fund.

Saturday afternoon from 1-5, bake-in aid of ladies' building fund.

Saturday afternoon from 1-5, bake-in aid of ladies' building fund.

Saturday afternoon from 1-5, bake-in aid of ladies' building fund.

Saturday afternoon from 1-5, bake-in aid of ladies' building fund.

Saturday afternoon from 1-5, bake-in aid of ladies' building fund.

Saturday afternoon from 1-5, bake-in aid of ladies' building fund.

Saturday afternoon from 1-5, bake-in aid of ladies' building fund.

Saturday afternoon from 1-5, bake-in aid of ladies' building fund.

Saturday afternoon from 1-5, bake-in aid of ladies' building fund.

Saturday afternoon from 1-5, bake-in aid of ladies' building fund.

Saturday afternoon from 1-5, bake-in aid of ladies' building fund.

Saturday afternoon from 1-5, bake-in aid of ladies' building fund.

Saturday afternoon from 1-5, bake-in aid of ladies' building fund.

Saturday afternoon from 1-5, bake-in aid of ladies' building fund.

Saturday afternoon from 1-5, bake-in aid of ladies' building fund.

Saturday afternoon from 1-5, bake-in aid of ladies' building fund.

Saturday afternoon from 1-5, bake-in aid of ladies' building fund.

Saturday afternoon from 1-5, bake-in aid of ladies' building fund.

Saturday afternoon from 1-5, bake-in aid of ladies' building fund.

Saturday afternoon from 1-5, bake-in aid of ladies' building fund.

Saturday afternoon from 1-5, bake-in aid of ladies' building fund.

Saturday afternoon from 1-5, bake-in aid of ladies' building fund.

Saturday afternoon from 1-5, bake-in aid of ladies' building fund.

Saturday afternoon from 1-5, bake-in aid of ladies' building fund.

Saturday afternoon from 1-5, bake-in aid of ladies' building fund.

Saturday afternoon from 1-5, bake-in aid of ladies' building fund.

Saturday afternoon from 1-5, bake-in aid of ladies' building fund.

Saturday afternoon from 1-5, bake-in aid of ladies' building fund.

Saturday afternoon from 1-5, bake-in aid of ladies' building fund.

Saturday afternoon from 1-5, bake-in aid of ladies' building fund.

Saturday afternoon from 1-5, bake-in aid of ladies' building fund.

Saturday afternoon from 1-5, bake-in aid of ladies' building fund.

Saturday afternoon from 1-5, bake-in aid of ladies' building fund.

Saturday afternoon from 1-5, bake-in aid of ladies' building fund.

Saturday afternoon from 1-5, bake-in aid of ladies' building fund.

Saturday afternoon from 1-5, bake-in aid of ladies' building fund.

Saturday afternoon from 1-5, bake-in aid of ladies' building fund.

Saturday afternoon from 1-5, bake-in aid of ladies' building fund.

Saturday afternoon from 1-5, bake-in aid of ladies' building fund.

Saturday afternoon from 1-5, bake-in aid of ladies' building fund.

Saturday afternoon from 1-5, bake-in aid of ladies' building fund.

Saturday afternoon from 1-5, bake-in aid of ladies' building fund.

Saturday afternoon from 1-5, bake-in aid of ladies' building fund.

Saturday afternoon from 1-5, bake-in aid of ladies' building fund.

Saturday afternoon from 1-5, bake-in aid of ladies' building fund.

Saturday afternoon from 1-5, bake-in aid of ladies' building fund.

Saturday afternoon from 1-5, bake-in aid of ladies' building fund.

Saturday afternoon from 1-5, bake-in aid of ladies' building fund.

Saturday afternoon from 1-5, bake-in aid of ladies' building fund.

Saturday afternoon from 1-5, bake-in aid of ladies' building fund.

Saturday afternoon from 1-5, bake-in aid of ladies' building fund.

Saturday afternoon from 1-5, bake-in aid of ladies' building fund.

Saturday afternoon from 1-5, bake-in aid of ladies' building fund.

Saturday afternoon from 1-5, bake-in aid of ladies' building fund.

Saturday afternoon from 1-5, bake-in aid of ladies' building fund.

Saturday afternoon from 1-5, bake-in aid of ladies' building fund.

Saturday afternoon from 1-5, bake-in aid of ladies' building fund.

Saturday afternoon from 1-5, bake-in aid of ladies' building fund.

Saturday afternoon from 1-5, bake-in aid of ladies' building fund.

Saturday afternoon from 1-5, bake-in aid of ladies' building fund.

Saturday afternoon from 1-5, bake-in aid of ladies' building fund.

Saturday afternoon from 1-5, bake-in aid of ladies' building fund.

Saturday afternoon from 1-5, bake-in aid of ladies' building fund.

Saturday afternoon from 1-5, bake-in aid of ladies' building fund.

Saturday afternoon from 1-5, bake-in aid of ladies' building fund.

Saturday afternoon from 1-5, bake-in aid of ladies' building fund.

Saturday afternoon from 1-5, bake-in aid of ladies' building fund.

Saturday afternoon from 1-5, bake-in aid of ladies' building fund.

Saturday afternoon from 1-5, bake-in aid of ladies' building fund.

Saturday afternoon from 1-5, bake-in aid of ladies' building fund.

ELKTON

While working along the Pennsylvania Railroad near Bacon Hill, on Saturday, Edwin Grason, of Sylmar, was struck by a piece of iron, said to have come from a passing train, and sustained a fractured leg and injuries of the head. He was brought to Union Hospital at Elkton for treatment.

Mrs. Dorothy Vandiver Waters has been granted an absolute divorce by the Cecil Circuit Court from William P. Waters, a farmer of near Elkton. She was given the right to use her maiden name, Dorothy Vandiver, she being a daughter of the late State Treasurer, Murray Vandiver, of Havre de Grace.

The monthly meeting of the Women's Home Missionary Society of Elkton Methodist Episcopal Church will be held Friday evening in the Church House. Mrs. Reeves, of Wilmington, will show slides of Mission work at this meeting.

Arrested for illegal freight riding on the Pennsylvania Railroad, Charles Sprigg, aged 19 years, was sentenced to three months in the House of Correction by Justice Scotten, of Elkton.

Hyland Marcus, a resident of Elkton, while gunning on the Lort farm near Singery, met with a painful accident when three fingers on his left hand were shot off. He was brought to Union Hospital and Dr. Greenwald administered tetanus anti-toxin.

Dr. Titworth, president of Washington College, Chestertown, was the speaker before the men's meeting held in the Church House, Elkton, Sunday afternoon. Owing to the Y. W. C. A. meeting in the Elkton Methodist Episcopal Church next Sunday afternoon, the men's meeting will be omitted.

Rev. A. P. Prettyman, of the Anti-Saloon League, with headquarters in Wilmington, was the speaker in the Elkton Methodist Episcopal Church last Sunday morning.

Elkton M. E. Church

Services at the M. E. Church, Elkton, W. G. Harris, pastor, will be as follows: Sunday School, 9:45 a. m. Morning worship, 11:00 o'clock, the pastor preaching and administering

sacrament of the Lord's Supper. Epworth League at 6:45 p. m. Evening worship at 7:30 o'clock. This service will be the beginning of the evangelistic service to continue two weeks.

Dr. Colona will hold the Fourth Quarterly Conference on Thursday evening, January 20th and will preach at the service preceding the Conference.

A county-wide temperance mass meeting will be held at 3:00 o'clock. The speaker will be Dr. Raymond Johnson, of Washington, D. C. All are cordially invited to attend this service. Because of this service the 4:00 o'clock men's meeting at the Church House has been postponed.

Elkton Personals

Mr. and Mrs. Harry H. Ferry announce the engagement of their daughter, Margaret Jane, to Leo A. McNichol, of Boston. The wedding will take place after Easter.

Staff Sergeant David R. Perkins, who, with his family, has been spending a month with her parents, Mr. and Mrs. John F. Sparklin, returned to Cumberland on Tuesday and will assume charge of Company G on Wednesday.

Mrs. Martha Stanton, of Wilmington, spent the week-end with her sisters, Mrs. Mary and Ella Cole.

Mrs. Lena L. Wilson and Miss Ida Davis spent Friday in Philadelphia.

The schoolm'am was explaining to a class of boys the origin of handshaking. "You see," she said, "in old times when men carried arms and were always fighting, they used to spread out their palms as a sign of peace. Then as they became more civilized the clasping of right hands meant one would not injure the other."

"Yes," spoke up a practical urchin, "but couldn't he have handed him one with his left?"—The Outlook.

Oh, toiling hands of Mortals! Oh, unwearyed feet, traveling, ye know not whither! Little do ye know your own blessedness; for to travel hopefully is a better thing than to arrive, and the true success is labor.—R. L. Stevenson.

VICTOR RECORDS!
NEWARK RADIO STORE

FOR FLOWERS
Phone Wilmington 203
BRINTON'S
203 West Ninth Street

Your New O'coat is Here
if You Only Knew it—Was \$35

If cost is holding you back.—

If you have figured "what's the use of buying a coat so late in the season."

If you have almost made up your mind to wait until next Fall—we arise to make the following remarks:—

That every "if" and "and" will fade into thin air when we show you these coats at \$35—and instead of thinking you'll want to wade in.

Beauty that is more than month's deep.—

JAS. T. MULLIN & SONS, Inc.

Wilmington

Delaware

Men's and Boys' Outfitters

Mermaid

The Missionary Society of the White Clay Creek Church will meet at the William P. Peach home, Thursday evening of this week.

Mr. and Mrs. B. L. Dickey, and daughter and son, of Stanton, were guests at dinner at the Peach home, preceding the Young People's meeting last week.

At the last meeting of the Young People's Society of the White Clay Creek Church, the first Tuesday of February was set as the date for a poverty social to be held at the home of Miss Estelle Chambers, of Milltown.

Frank V. Whiteman is suffering with a severe attack of rheumatism.

HARMONY GRANGE

Harmony Grange opened Monday evening with a full house. The installation of officers, all of whom were present, took place under the direction of Worthy State Master Robinson, assisted by Miss Emma Maclary of Delaware Grange, substituting for Mrs. Robinson, unable to be present because of illness. Prices having been received, an order for clover seed was opened.

After the regular order of business, the lecturer called upon the Worthy State Master and newly installed officers for remarks. A number of suggestions for the good of the order were made. Miss Margaret Derickson and Mrs. Clara Eastburn favored with a vocal duet, and Mrs. Emma Maclary with a whistling selection.

The hospitality committee served chicken salad, rolls and butter, pickles, Saratoga chips, coffee, and after dinner mints.

A number of members of the Grange are reported ill with colds, grippe, etc.

A meeting to be held at Brandywine Springs, on January 15th, in order to organize a Mill Creek hundred Parent-Teacher Association, was announced.

Long Hair Will Be the Mode This Season

According to Miss Mary Ellen Ellis, of Ellis Sisters, who has just returned from the annual Convention and Exhibition of Beauty Shop Owners, held at the Waldorf Astoria, last week; the smart styles in coiffure for the coming season will call for long hair and a more elaborate arrangement. The hair dressers have anticipated Parisian styles which are being designed for more formal hair arrangement, and styles in coiffure this year will tend to eliminate the bobbed effects.

For those whose heads still bear the marks of the shears and clippers, artificial arrangements will be provided, so that for formal and semi-formal functions they may have the elaborate arrangements of curls, marcelled and ringlets, on the smooth twined effect, whichever their type of beauty requires.

The convention, which was attended by beauty experts from all over the United States, presented the gathering with scores of new styles, ideas and treatments, and refinements of old methods. Miss Ellis brought back with her a French bleach pack which, it is claimed, is entirely new, and the new contouring treatment for the reduction of fat deposits and the elimination of lines and wrinkles. This treatment is based on the physical phenomenon of osmosis.

Do your work—not just your work and no more, but a little more for the lavishing's sake; that little more which is worth all the rest. And if you suffer as you must, and if doubt as you must, do your work. Put your heart into it and the sky will clear. Then out of your very doubt and suffering will be born the supreme joy of life.—Dean Briggs.

"The more a person has to say, the less likely he is to waste energy in shouting."

Don't Believe the Calendar!

Spring's on the way!
You can even smell the sweet peas growing when you open your new seed catalog.

It's time to think about radishes and onions, and it's time to start planning that new home you've always wanted.

Boy, listen to that wind!
One thing certain, you're going to want

HEAT BY RADIATORS

DANIEL STOLL

PLUMBING - HEATING - ROOFING

A Wide and Appetizing Menu at Reasonable Prices

The B. & O. Restaurant

Opposite the B. & O. Station

Delicious Fountain Confections

Schraft's Candy

Electrical Supplies

Covered Garbage Cans

Lawn Seed

Paints and Varnishes

Carpenters' Tools of Every Description

Alfred D. Peoples

507 Market Street

Wilmington

OPERA HOUSE

ONE DAY—Friday, January 14

ADDED ATTRACTION!

A SEVEN-PIECE ORCHESTRA—"THE MELODY BOYS"

The Newark Post

Issued Every Wednesday at
The Shop Called Kells
NEWARK, DELAWARE

ESTATE OF EVERETT C. JOHNSON—Publisher
MRS. EVERETT C. JOHNSON—Editor
CHARLES B. JACOBS, JR.—Associate Editor

Entered as second-class matter at Newark, Delaware,
under Act of March 3, 1897.

Make all checks to THE NEWARK POST.
Telephones, 92 and 93.

The Subscription price of this paper is \$1.50 per year in advance.
Single copies 4 cents.

We want and invite communications, but they must be signed by the
writer's name—not for publication, but for our information and protection.

"Good Roads, Flowers, Parks, Better Schools, Trers,
Pure Water, Fresh Air, Sunshine and Work for
Everybody."—OUR MOTTO.

JANUARY 12, 1927

The Truth About A Community

Henry A. Wise, prominent New York lawyer, has recently been appointed Chairman of the Del-Mar-Va Inventory Congress, to be held at Salisbury, early in February. Mr. Wise has written a most interesting letter of acceptance, the conclusion of which contains a sound kernel of thought for any organization. It reads: "Of course, what we need most at this time is to know the truth concerning ourselves. It is suicidal, from a business viewpoint, to be conscious only of one's resources. Every community, like almost every individual, has liabilities. The manner in which we treat our liabilities determines to a large extent the benefits we are permitted to derive from our resources."

WHAT HAVE YOU READ?

Here follows the list printed last week in its correct form:

- | | |
|--|---------------------|
| 1. "Adam Bede" | George Eliot |
| 2. "Anna Karenina" | Leo Tolstoy |
| 3. "Utopia" | Thomas More |
| 4. "The Way of All Flesh" | Samuel Butler |
| 5. "Treasure Island" | R. L. Stevenson |
| 6. "Anatol" | Arthur Schnitzler |
| 7. "Crime and Punishment" | Dostoyevsky |
| 8. "Humphrey Clinker" | T. G. Smollett |
| 9. "Tono Bungay" | H. G. Wells |
| 10. "Don Quixote" | Cervantes |
| 11. "The Last Chronicle of Barset" | Trollope |
| 12. "Thus Spake Zarathustra" | Friedrich Nietzsche |
| 13. "Quo Vadis" | Henrik Sienkiewicz |
| 14. "Moll Flanders" | Defoe |
| 15. "Sapho" | Alphonse Daudet |
| 16. "Walden" | Thoreau |
| 17. "Wilhelm Meister's Apprenticeship" | Goethe |
| 18. "Oedipus Rex" | Sophocles |
| 19. "Wuthering Heights" | Emily Bronte |
| 20. "Thanatopsis" | Wm. Cullen Bryant |
| 21. "King Lear" | Shakespeare |
| 22. "Madame Bovary" | Gustave Flaubert |
| 23. "Life On the Mississippi" | Mark Twain |
| 24. "Undine" | Fouque |
| 25. "Salome" | Oscar Wilde |
| 26. "Leaves of Grass" | Walt Whitman |
| 27. "Divina Commedia" | Dante |
| 28. "Don Juan" | Byron |
| 29. "Joseph Andrews" | Henry Fielding |
| 30. "Les Miserables" | Victor Hugo |
| 31. "Decameron" | Boccaccio |
| 32. "Past and Present" | Thomas Carlyle |
| 33. "The Sunken Bell" | Gerhardt Hauptmann |
| 34. "Endymion" | John Keats |
| 35. "Arrowsmith" | Sinclair Lewis |
| 36. "Paradise Lost" | John Milton |
| 37. "La Gioconda" | D'Annunzio |
| 38. "The Crime of Sylvester Bonnard" | Anatole France |
| 39. "David Copperfield" | Dickens |
| 40. "Fathers and Sons" | Ivan Turgeneff |
| 41. "The Rise of Silas Lapham" | Wm. Dean Howells |
| 42. "Sonnets to Laura" | Petrarch |
| 43. "Under the Greenwood Tree" | Thomas Hardy |
| 44. "Gulliver's Travels" | Jonathan Swift |
| 45. "Rubaiyat" | Omar Khayyam |
| 46. "Poor Richard's Almanac" | Benjamin Franklin |
| 47. "The Egoist" | George Meredith |
| 48. "Sentimental Tommy" | J. M. Barrie |
| 49. "The Blue Bird" | Maeterlinck |
| 50. "Illiad" | Homer |

PEOPLE'S COLUMN

Editor, Newark Post,
Newark, Delaware.

I wish to thank all who have contributed to the needy family mentioned in last week's Newark Post. The response was most generous.

Alice Leak, R. N.

CHARLES WATERS RECOVERING

Charles Waters is still confined to his home on East Main street, suffering from the shock and injury which he received when struck by an automobile on Christmas Eve. An X-ray examination has shown a crack in the scapula. Mr. Waters, while walking to work near the paper mill, was struck by an automobile driven by B. Henderson, who swerved quickly when he saw Mr. Waters in the fog, but not soon enough to avoid the accident.

CORN CLUB JUDGING CONTEST

Friday at 11.30 a. m., at the Corn Growers' Show at Middletown, competition will open for the Corn Growers' Club judging contest. The prize is a handsome silver cup donated by the Delaware Corn Growers' Association, and will go permanently to any boy or girl winning it three consecutive times.

The winner last year was Irene Tarr of Seaford, at that time the only girl member. This year there are a number of girls in the club and competition is not only going to be keen between contestants but particularly so between the sexes. The boys hope to retrieve masculine supremacy this year.

A. D. Cobb and E. H. Meredith are in charge of the event.

SEWING CIRCLE WILL MEET

The Ladies' Sewing Circle of the M. E. Church will meet with Mrs. C. A. McCue on Thursday afternoon, February 17th.

The Man With the Hoe



Courtesy Sunday Star

EDWIN MARKHAM

Written after seeing Millet's world-famous painting of a brutalized toiler.

God made man in his own image,
In the image of God made He him.—Genesis.

Bowed by the weight of centuries he leans
Upon his hoe and gazes on the ground,
The emptiness of ages in his face,
And on his back the burden of the world.
Who made him dead to rapture and despair,
A thing that grieves not and that never hopes,
Stolid and stunned, a brother to the ox?
Who loosened and let down this brutal jaw?
Whose breath blew out the light within this brain?

Is this the Thing the Lord God made
And gave
To have dominion over sea and land;
To trace the stars and search the heavens for power;
To feel the passion of Eternity?
Is this the dream He dreamed who shaped the suns
And marked their ways upon the ancient deep?
Down all the caverns of Hell to their last gulf
There is no shape more terrible than this—
More tongued with curse of the world's blind greed—
More filled with signs and portents for the soul—
More packed with danger to the universe.

What gulfs between him and the seraphim!
Slave of the wheel of labor, what to him
Are Plato and the swing of Pleiades?
What the long reaches of the peaks of song,
The rift of dawn, the reddening of the rose?
Thru this dread shape the suffering ages look;
Time's tragedy is in that aching stoop;
Thru this dread shape humanity betrayed,
Plundered, profaned and disinherited,
Cries protest to the Judges of the World,
A protest that is also prophecy.

O masters, lords and rulers in all lands,
Is this the handiwork you give to God,
This monstrous thing distorted and soul-quenched?
How will you ever straighten up this shape;
Touch it again with immortality;
Give back the upward looking and the light;
Rebuild it in the music and the dream;
Make right the immemorial infamies,
Perfidious wrongs, immedicable woes?

O masters, lords and rulers in all lands,
How will the future reckon with this Man?
How answer his brute question in that hour
When whirlwinds of rebellion shake all shores?
How will it be with kingdoms and with kings—
With those who shaped him to the thing he is—
When this dumb Terror shall rise to judge the world,
After the silence of the centuries?

From "The Man with the Hoe,
and other Poems," by Edwin Markham.

Reprinted by permission from Edwin Markham, who visited Newark today.

NEWARKERS HEAR GOVERNOR'S MESSAGE

Dr. and Mrs. Hulihan, Dean Robinson and Mrs. William H. Evans went to Dover on Monday and heard Governor Robinson's message to the General Assembly.

A Successful Calamity Saturday Evening

On Saturday evening the Footlights Club production of "A Successful Calamity" will be presented at Wolf Hall.

This play by Claire Kummer had a famous run at the Plymouth Theatre, and is being staged by Mrs. Tyson, of the New Century Club, assisted by Professors Matthews and Van-Keuren. John Dale and Durant Stroud, who made histrionic history last year in Paris, are directing rehearsals, which are being held every night. Stroud plays a feminine role in the play.

The cast, which follows, is entirely composed of men. The dress rehearsal will be held tomorrow evening.

Cast

Henry Wilton—Street.
Emmie, his second wife—Stroud.
Marguerite, his daughter—Steele.
Eddie, his son—Sweezy.
George Struthers—Weltlich.
Clarence Rivers—Williams.
Julia—Hare.
Connors—Collins.
Pietro Rafello—Donahue.
Dr. Brodie—Rosenberg.
John Belden—Jones.
Albertine—E. Meredith.

DELAWARE COLLEGE TEAM TO DEBATE, FRIDAY

On Friday evening the debating team of the University of Delaware will compete in two sections with Schuylkill College team on the question, "Resolved, that the United States should cancel the war debt owed her by the allies."

The affirmative team of Delaware, composed of Louis Handloff, first speaker; Frederick Whitney, second speaker, and Philip Cohen, final speaker, will oppose the negative team of Schuylkill in Wolf Hall. The negative team of Delaware, composed of Lawrence Elliot, first speaker; Isaac Quillen, second speaker, and Joseph D. Craven, will oppose the affirmative team of the opponents in Reading.

The speakers for Delaware are all members of last year's team, which had such a successful season. Since the establishment of a debating club at the University, considerable interest has been shown in this form of vocal sport. About thirty students entered the preliminary contests. Professor William E. Matthews, of the English department, is coach.

DR. PAMMEL VISITS HERE

Dr. Louis H. Pammel, of the Iowa State Agricultural College at Ames, Iowa, was the guest of Professor and Mrs. W. A. Wilkinson at dinner and overnight on Monday. Dr. Pammel, a botanist of international reputation, is president of the National Honor Society of Phi Kappa Phi. Professor Wilkinson, who is president of the local chapter and Mrs. Wilkinson entertained the officers of the local chapter at dinner with Dr. Pammel and in the evening entertained all of the local members. At five o'clock, in the Hilarium at Women's College, Dean Robinson entertained Dr. Pammel and all the students of the University who are interested in the botanical sciences.

Dr. Pammel is also distinguished for establishing public parks in the State of Iowa.

ENTERTAINMENT

A play entitled "A Poor Married Man," will be given in Red Men's Hall at Union, on Thursday evening, January 20, by members of the Hillside Parent-Teacher Association. The play is a benefit for Leola Council, No. 14, D. of P., and the Hillside P-T. A.

Poultry Show Winners Chosen

(Continued from Page 1.)

Partridge Rock—Cock, W. E. Renshaw; Hen, W. E. Renshaw; Cockerel, W. E. Renshaw; Pullet, W. E. Renshaw.

Columbia Rock—Cock, R. Shaffer; Hen, K. W. Shambers; Cockerel, Dr. A. S. Houchin; Pullet, Dr. A. S. Houchin.

Silver Wyandotte—T. K. McDowell; Hen, T. K. McDowell; Cockerel, T. K. McDowell; Pullet, T. K. McDowell.

White Wyandotte—Cock, W. E. Renshaw; Hen, W. E. Renshaw; Cockerel, W. E. Renshaw; Pullet, W. E. Renshaw.

Black Wyandotte—W. S. Evans; Hen, W. S. Evans.

Columbian Wyandotte—Cock, C. A. Mason; Hen, C. A. Mason; Cockerel, A. B. Martin; Pullet, T. C. A. Mason.

S. C. R. I. Reds—Cock, A. R. Bryant; Hen, J. P. Newcomb; Cockerel, H. C. Waller; Pullet, A. R. Bryant.

Rose C. R. I. Reds—Cock—M. L. M. Vail; Hen, M. L. M. Vail; Cockerel, M. L. M. Vail; Pullet, M. L. M. Vail.

S. C. Ancona—Young, Laman Brothers.

Buff Orpington—Evan Dunbar.

Rouen Ducks—Dr. A. S. Houchin.

Mallard Ducks—W. C. Spruance.

Indian Runner Ducks—Frank Godwin.

Turkeys, Bronze—Gobblers, Evelyn Sharpless; Hen, Chas. Foote.

Black Giants—Cockerel, G. Murray; Hen, E. G. Churchman; Cockerel, G. W. Murray; Pullet, G. W. Murray.

Light Brahmas—Hen, G. F. Godwin.

S. C. Dark Brown Leghorns—Cock, J. W. Kennedy; Hen, J. W. Kennedy; Cockerel, J. W. Kennedy; Pullet, J. W. Kennedy.

White Leghorns—Cock, Clyde Robinson; Hen, Clyde Robinson; Cockerel, Clyde Robinson; Pullet, D. L. Cloud.

R. C. Ancona—Cock, Laman Brothers; Hen, Laman Brothers; Cockerel, Laman Brothers; Pullet, Laman Brothers.

Buff Orpington—Cock, H. B. Appleford; Hen, H. B. Appleford; Cockerel, W. J. Moody; Pullet, H. B. Appleford.

White Orpington—Hen, Anna Larson; Cockerel, Hannah Larson.

Dark Cornish—Cock, Dr. D. Leavy.

Barred Rock Bantams—Cockerel, E. G. Mason.

Barred Rock—B. R. Bennett.

White Rock—Old, J. Jackson.

Colored Rock—R. Schaeffer.

Silver Wyandotte—Young, L. K. McDowell.

White Wyandotte—Old, W. Renshaw; Young, W. Renshaw.

Rhode Island Reds—Old, L. B. Godwin; Young, C. R. Timson.

R. C. R. I. Reds—Old, H. Hettinger; Young, G. W. Murray.

Black Giants—Young, W. A. Norton.

Light Brahmas—Old, F. B. Godwin; Young, F. B. Godwin.

Dark Brown Leghorns—Old and Young—J. W. Kennedy.

S. C. White Leghorns—Old, R. L. Cloud; Young, C. Robinson.

W. J. Robertson Goes To Public Ledger

Beginning on Monday William J. Robertson, who served with distinction as editor of Every Evening for four years, began new duties on the editorial staff of the Philadelphia Morning Ledger.

Mr. Robertson continued as editor of Every Evening up to last Saturday. He came to Every Evening four years ago from Richmond, Virginia, where he was a member of the editorial staff of the News-Leader.

COMPANY TO OPERATE REFRIGERATION PLANT

A new corporation, known as Newark Ice, Coal and Supply Company, have secured the old Spring Plant and plan to install ice-making and refrigerating machinery. In addition to ice and cold storage, the plan to operate a milk cooling station and a feed cutting and mill department.

They expect to install machinery capable of producing 25 to 30 tons of ice a day. As a matter of demonstration, they are sending a portable feed mixing machine around to farms in this vicinity that will cut, grind and mix feed of any type, adding molasses to the mix, at the rate of one ton or better, an hour. This machine also bags the mixture. A plant of the same type of machinery is to be installed in this plant.

Mr. George S. Blake, who has considerable experience in refrigerating plants, will probably be superintendent of the new plant. Mr. Blake is now with the Continental Refrigeration Company.

THE SICK

Miss Dean Steel, young daughter of Mrs. Katharine Steel, was operated yesterday at the Homeopathic Hospital for mastoid trouble. Condition this morning is reported very favorable.

John, the young son of Captain Mrs. Whittemore, was taken to P. & S. Hospital yesterday, suffering with diphtheria. Mrs. Whittemore and the youngest child are being cared for by Mrs. Gabriel, C. Whittemore and the oldest child is quarantined in their home.

Charles P. Wollaston is ill with scarlet fever at his home on Park Place.

Mrs. H. K. Preston is able to get up again, after an illness of grip and bronchitis.

Howard Lloyd, 25 N. Chapel street, fell from a chair Monday, injuring his shoulder, which was first thought to have been broken.

Edward O'Dwyer, grandson of Mrs. H. J. Gaerthe, who has been suffering with bronchitis since Christmas, is very much improved.

The illness of Mrs. E. Y. Underwood, at the home of her son, Ed Underwood, in Brooklyn, has delayed the return of Mrs. Underwood to Newark.

All who become men of power must have the same self-adjustment to circumstances, the same voluntary expansion and discipline of their faculties, the same working of their life up and into their high ideals of life. G. Holland.

Those Headaches

Your eyes may be the cause. Start the New Year right. Have your eyes properly examined and be sure about them.

S. L. McKEE

Optometrist—Optician
816 MARKET STREET
Wilmington, Del.



DOBBS HATS

We are now in a position to show you a fresh assortment of new hats. The very latest word in colors and shape, having had part of our spring order delivered early. \$7 to \$15.

MANSURE & PRETTYMAN DU PONT BUILDING

Note—Wool Half Hose in Large Variety, \$1.00 to \$3.00!

CLUB SOCIAL

Miss Ida Lynch visited George Lee Sunday.

Miss Mary Clancy and friends in

Mr. and Mrs. C. Elton, ad Mr. and Mrs. of Wilmington, visit and family on Sun

The Monday Evening was entertained by Olive Heiser. Dining the Blue Hen Tea cards were played home. The first Mrs. Thomas Ingalls Katharine Johnson, was won by Miss

Dr. Bevan, formerly of Delaware University of the Tennessee, called on Thursday.

Newark friends of former rector of St. Newark, now rector Church, Oakmont, to learn that Dr. J. pointed to the Massachusetts on made. Dr. Jones there on January 8 till January 22nd.

Miss Justis, of week-end guest of rison, of Windyclyffe

Mrs. Oliver Goff New York, is ill at home of Miss Elsie

Mrs. Kenneth Wh yesterday from W she has been a patient at the Walter Reed

Mrs. Thomas B York City, will spend here as the guest Durant. On Saturday will entertain a few to meet Mrs. Bl

Miss Dorothy Whit at bridge on Saturday number of her friends. Reserves. Miss were: Misses Jose Calysta Foote, Ell Louise Burke, Ag Pauline Robinson.

Miss Etta Wilson when her automobile slipped road last 7 is improving and is stairs.

Mr. and Mrs. Her of East Main street guests on Friday Edith Kelly and F of Wilmington.

Mr. and Mrs. W Miss Leslie Blackwell, Jr., were day at a dinner party and Mrs. Harry Black town.

Patronesses at the given in Old College evening, were Mrs. S send, and Miss Keely

Mrs. J. Pearce C contain two tables at day afternoon.

Mrs. B. F. Proud end at Chestnut Hill as the guest of Mrs.

Extra

In order to improve grade character that we are making work. Note the

COMBINATION SHAMPOO and BOB H \$1.00

HAIR CURE 35

COHN SWEDISH 75

HAIR DRESS \$5.00 to

Cohn's

THE SAME COUR

CO

9th and Shipley St

CLUB AND
SOCIAL NEWS

The Week In Review

MEETINGS
PERSONAL NOTES

Miss Ida Lynch, of Wilmington, visited George Leak and family on Sunday.

Miss Mary Clancy spent last week-end with friends in Philadelphia.

Mr. and Mrs. C. H. Buckworth, of Elkton, and Mr. and Mrs. Roy Craig, of Wilmington, visited J. C. Charsha and family on Sunday.

The Monday Evening Bridge Club was entertained this week by Miss Olive Heiser. Dinner was served at the Blue Hen Tea Room, after which, cards were played at Miss Heiser's home. The first prize was won by Mrs. Thomas Ingham; second by Miss Katharine Johnson. The guest prize was won by Miss Harriet Wilson.

Dr. Bevan, formerly of the University of Delaware faculty, now of the University of the South, at Sewanee, Tennessee, called on friends here last Thursday.

Newark friends of Dr. Edgar Jones, former rector of St. Thomas' Church, Newark, now rector of St. Thomas' Church, Oakmont, Pa., will be happy to learn that Dr. Jones has been appointed to the Western District of Massachusetts on the Bishop's Crusade. Dr. Jones started his work there on January 8th to continue until January 22nd.

Miss Justis, of Faulkland, was a week-end guest of Miss Louisa Morrison, of Windycliff.

Mrs. Oliver Goffigon, of Elmira, New York, is ill with grippe at the home of Miss Elsie Wright here.

Mrs. Kenneth Whitmore returned yesterday from Washington, where she has been a patient for ten days at the Walter Reed Hospital.

Mrs. Thomas Blaisdell, of New York City, will spend next week-end here as the guest of Mrs. Armand Durant. On Saturday, Mrs. Durant will entertain a few friends at luncheon to meet Mrs. Blaisdell.

Miss Dorothy Wheelless entertained at bridge on Saturday afternoon a number of her friends from the Girl Reserves. Miss Wheelless' guests were: Misses Josephine Hossinger, Calista Foote, Elizabeth Eubanks, Louise Burke, Agnes Miller and Pauline Robinson.

Miss Etta Wilson, who was hurt when her automobile skidded on a slippery road last Tuesday morning, is improving and is able to be downstairs.

Mr. and Mrs. Herman W. Stradley, of East Main street, had as her guests on Friday evening: Misses Edith Kelly and Florence Stradley, of Wilmington.

Mr. and Mrs. Walter Blackwell, Miss Leslie Blackwell, and Walter Blackwell, Jr., were guests on Sunday at a dinner party given by Mr. and Mrs. Harry Blackwell, of Charleston.

Patronesses at the Druids' Dance, given in Old College last Saturday evening, were Mrs. Steel, Mrs. Townsend, and Miss Keely.

Mrs. J. Pearce Cann will entertain two tables at bridge on Saturday afternoon.

Mrs. B. F. Proud spent last week-end at Chestnut Hill, Pennsylvania, as the guest of Mrs. W. C. Wright.

The Tuesday Bridge Club met yesterday with Mrs. John S. Shaw at her home at 1204 Delaware avenue, Wilmington.

Mr. and Mrs. Arthur Hauber and family spent Sunday with Mr. and Mrs. R. A. Pusey, at Clayton.

Mrs. Mildred Lind is spending today here with her parents, Mr. and Mrs. H. W. McNeal.

Mrs. A. D. Cobb, Mrs. R. W. Heim and Mrs. J. Pearce Cann will attend the luncheon of the Wilmington New Century Club on Friday.

Mr. and Mrs. W. J. Brown spent Sunday with relatives at Hillcrest.

Mrs. Annie G. Morrow, of Philadelphia, is visiting Mrs. L. K. Bowen.

The Friday Bridge Club met with Mrs. George Townsend yesterday.

Miss Elizabeth Fillebrown, of Bryn Mawr, is visiting her sister, Mrs. Arthur Underwood, here.

Miss Mary Houston, of Washington, D. C., is the guest of Miss Elsie Wright.

Mrs. Wilson Goldsmith will entertain at bridge tomorrow afternoon, in compliment to Mrs. Frank Dean, of California, who is visiting her parents, Mr. and Mrs. R. A. Whittingham, of this town.

Mrs. D. S. Jackson returned Monday to her home in Buffalo after a six weeks' visit here with her daughter, Mrs. R. C. Lewis.

Sunday guests of Mr. and Mrs. H. W. Davis were: Mr. and Mrs. Harvey Gravell and Mr. and Mrs. Harold Steinbright, of Elkins Park.

Mr. and Mrs. J. F. Sharp, of New York City, spent the week-end with Mr. Sharp's sister, Mrs. R. W. Thoroughgood.

Mr. Geo. S. Williams, president of the State Board of Education, was a guest at the home of Mr. and Mrs. R. W. Thoroughgood Tuesday. Mr. Williams addressed the Parent-Teacher meeting last evening.

Miss Elizabeth Brady spent last week-end at the home of her father, Frederick Brady, in Middletown.

Mrs. E. K. Butler is ill at her home on Main street.

Mrs. Alice Ahern will leave Newark this week to spend the rest of the winter at the home of her cousin, Mrs. Oliver Foote, near Marshallton.

Cards received from Mr. and Mrs. A. F. Fader from Greenville, South Carolina, report a delightful trip and that Mr. Fader is still gaining in health. Mr. and Mrs. Fader will motor through Florida.

Artisan Smith, of Philadelphia, spent last week-end here with Colonel and Mrs. S. J. Smith.

Mrs. Fred Cain and Arthur Cain, of Philadelphia, were Sunday guests of Mr. and Mrs. Walter Carlisle.

Dr. and Mrs. Walter Hillihen, Professor and Mrs. Elisha Conover and Mr. and Mrs. George L. Townsend, Jr., attended the Richards-Worth wedding in Wilmington last Thursday.

Miss Katharine Pritchett, of Harrisburg, spent Saturday and Sunday here with her aunts, Mrs. E. K. Butler and Miss Esther Phoebus.

Mr. and Mrs. Nathaniel Armstrong entertained the following guests on Sunday: Mr. and Mrs. Irvin A. Lauer, of Wilmington, Mrs. Margaret Grose and Mr. and Mrs. Guy Lauer and young son, of Brooklyn Terrace, Wilmington, and Gus Fisher, of Ambler, Pennsylvania.

Colonel and Mrs. S. J. Smith entertained at dinner last Wednesday evening in compliment to Major and Mrs. Underwood. The guests were: Major and Mrs. Underwood, Drs. and Mrs. C. C. Palmer, Dr. and Mrs. Crooks, and J. E. Lasher, of this town, and Miss Betty Miller Fillebrown, of Bryn Mawr.

Miss Kitty Faulkner, of New Castle, was a week-end guest of Miss Rebecca Cann.

Mrs. Lillian Messick was among the graduates of the Wilmington Academy of Beauty Culture, at the graduation exercises held Friday night.

Misses Marguerite Tatman and Marian Stayton, of Greenwood, were week-end guests of Mr. and Mrs. J. Frank Elliott. Mr. and Mrs. William Stayton, of Wilmington, were Sunday guests at the Elliott home.

Mr. and Mrs. J. P. Cann will be among the guests at a dinner party given Friday evening by Mr. and Mrs. R. T. Cann, II, at Kirkwood.

The members of the Monday Bridge Club will be entertained at luncheon on Thursday by Mrs. C. O. Houghton.

Mr. and Mrs. Donald Horsey and family, of Lansdowne, Pennsylvania, Dr. and Mrs. Joel Boone and daughter, Miss Susanne Boone, of Washington, D. C., spent last week-end with Mrs. Hannah Pilling. Mrs. Horsey and children will spend the week with Mrs. Pilling.

A card party was given on Tuesday evening, January 3rd, at the home of Mr. Albert Clark. Most of

the evening was devoted to playing "500", after which several guitar selections were given by Mr. James Taylor. Refreshments were served. Those present were: Misses Helen Clark, Mary Grose, Evelyn Shew and Messrs. Albert Clark, Clarence Knox, Phillip Hubbard, Herbert Leverage, and James Taylor.

Mrs. Allen Vanneman, of Port Deposit, spent last week-end with Mrs. William J. Rowan.

Major Edmund Tarbutton, of Houston, Texas, spent yesterday here with his cousin, Mrs. Arthur Hauber.

Mr. and Mrs. Carl Rankin entertained a few friends at cards last Saturday evening.

Mrs. R. J. Colbert entertained at dinner on Tuesday evening, her daughters, Mrs. Geo. S. Wood, Mrs. John Fader and Mrs. H. F. Smith, the Misses Jane, Anne and Marian

Smith, Mrs. N. W. Bryan and Mrs. Mark P. Malcom.

Miss Madeline Johnson, teacher of the fourth grade, is confined by illness. Mrs. E. E. Kennard is substituting in her place.

WEDDINGS

MILES-SMITH

Mrs. Hannah Smith, of near Appleton, announces the marriage of her daughter, Norma Eva, to Mr. Charles J. Miles, January the sixth, by the Rev. Irvin F. Wagner, pastor of the Presbyterian Church, Elkton. The bride was attended by her cousin, Miss Norma Brannan, of Newark, and the groom by his nephew, Mr. Calvin Miles, of Elkton. Mr. and Mrs. Miles will make their future home with the bride's mother.

A&P Stores Are Headquarters for
Nationally Advertised Foods!

Discriminating women readily take advantage of this, and choose the spotlessly clean A&P Store as their ultimate shopping center. By so doing, they are assured of receiving the highest quality in all their foods.

EVERY ARTICLE PURCHASED IN AN A&P STORE MUST GIVE YOU SATISFACTION—WE GUARANTEE IT!

FANCY
MAINE Potatoes 5 lbs 19¢

Just arrived from Maine, the finest potato-producing region in the country. A remarkable value!

Hecker's BUCKWHEAT OR PANCAKE Flour pkg 14c
Duff's Molasses 1 1/2-lb can 15c
Ralston Food 1 1/2-lb pkg 24c
Del Monte Peaches 2 1/2-cans 25c

To achieve and maintain a beautiful complexion—use Ivory!

Ivory Soap 4 med cakes 25¢
Campbell's Beans 3 cans 25c
Sun-Maid Raisins 2 pkgs 25c
Hershey's Cocoa 1/2-cans 15c
Mother's Oats pkg 10c

Rich Creamy Cheese lb 29¢

RITTER'S CATSUP 2 bts 25c
Wheatena pkg 25c
Wesson Oil pt can 29c
HORSESHOE SALMON can 25c
Cream of Wheat pkg 14c
Coleman's Mustard 1/2-cans 23c
UNDERWOOD'S DEVILED HAM 3 cans 25c
Knox Gelatine pkg 20c
Sunsweet Prunes 2-lb pkg 25c
CAMPBELL'S TOMATO SOUP 3 cans 25c
Heinz Kidney Beans sm can 11c
Astor Rice pkg 10c

COFFEE PRICES REDUCED!

8 O'Clock Coffee lb 35¢
A fine mild and mellow Santos coffee—our own importation!

Red Circle Coffee lb 39¢

Richer in full, delicious coffee flavor—the mainstay of the breakfast table!

Gorton's Ready-to-Fry Codfish Cakes can 14c
Royal Gelatine Desserts 2 pkgs 25c
Stero Bouillon Cubes each 2c
Royal Baking Powder 1/2-cans 23c
Gold Medal Flour 12-lb bag 63c

Protects and beautifies fabrics as it cleans them!

LUX large pkg 23¢
Campbell's Clam Chowder can 10c
Karo Syrup Blue Label 1 1/2-cans 12c
Pillsbury's Health Bran pkg 16c
Baker's Premium Coconut pkg 14c
Calif. Yellow Cling Peaches can 19c

Del Monte SLICED PINEAPPLE 2 1/2-cans 25c
DELICIOUS APPLE SAUCE 2 cans 25c

Mazola Oil pt can 29c
Crisco for Shortening can 25c
Hinz Chow Chow bot 19c
Fleischmann's Yeast cake 3c
Presto Cake Flour pkg 15c
Del Monte Spinach can 17c
Encore Olive Oil 3-oz cruets 15c
Eagle Brand Milk can 19c
Del Monte Apricots sm can 15c
Kingstons Cornstarch pkg 11c

Grandmother's Bread pan loaf 7¢

It is an established fact that only the purest ingredients (by scientific test) enter into the making of Grandmother's Bread, and from day to day its super-high standard never varies!

A&P Ketchup 2 bts 25c
Pure Grape Juice pt bot 19c
Dried Lima Beans lb 10c
Morton's Salt pkg 10c
Tender Red Beets 2 cans 25c
Plain Queen Olives bot 25c
Fancy Tiny Peas can 23c
Encore Spaghetti can 10c

SWEET CRUSHED Sugar Corn
Red Ripe Tomatoes 3 cans 25¢
Tender, Tasty Peas

Chipsos sm pkg 9c
Brillo 3 pkgs 25c
Dona Castle Soap 3 cakes 25c
Lighthouse Cleanser 6 cans 25c
Babbitt's Lye 2 cans 25c
Liquid Blue bot 5c
Lifebuoy Soap 3 cakes 20c
Fels Naptha Soap 4 cakes 21c
Mione Hand Soap can 9c
Ammonia 2 bts 15c

THE GREAT ATLANTIC & PACIFIC TEA CO.

START
THE
NEW
YEAR
RIGHT

BY TAKING CARE OF
YOURSELF

If this care is given by **Ellis Sisters** and their preparations, you will look years younger and do better work.

We have just returned from the New York Convention at the Waldorf-Astoria and have brought back the best of the new ideas.

YOU ARE SURE TO BE SATISFIED AT

111 W 9th St. **ELLIS SISTERS** Phone 75-J

24 YEARS OF VALUABLE EXPERIENCE

PERFECTLY
FEMININE

—means a coiffure that is charmingly distinctive and suited to your type, with a scent that is intriguing without being blatant.

Allow our artists to give you an original hair arrangement for your next party.

Try **MARIE EARLE'S** Toilet Preparations

for delicate and exotic odors

MRS. M. DE WEES KELLY

Hairdressing, Marcel, Finger and
Permanent Waving

Ten Operators

Male Barbers

212-214 West Ninth Street

Phone 2135

WILMINGTON

Extraordinary Announcement

In order to meet Philadelphia competition and keep the high-grade character of our business in Wilmington, we announce that we are making a most drastic change in prices on our work. Note the following prices:

COMBINATION SPECIAL SHAMPOO and MARCEL for BOB HAIR \$1.00
HAIR CUTTING 35c
COHN'S SWEDISH FACIALS 75c
HAIR DYES \$5.00 to \$10.00
MARCEL WAVING 75c
HOT OIL TREATMENT and SHAMPOO \$1.00
COMBINATION SPECIAL SHAMPOO and FINGER WAVE \$1.25
COMBINATION SPECIAL SHAMPOO and WATER WAVE \$1.25
Cohn's Famous Permanent Waves \$7.50

THE SAME COURTEOUS SERVICE AND QUALITY WORK AS BEFORE

COHN'S HAIRDRESSERS

LEWIS W. COHN, Manager

9th and Shipley Sts. Second Floor Wilmington, Delaware

Newark Wins Doubly From New Castle In Fast Games

Boys Take Sensational Game That Goes Into Extra Periods; Ann Chalmers And Colleagues Defeat Girls With Ease And Grace

BOYS' GAME

Beginning with the second period of Friday night's game with New Castle, the Newark High School boys' basketball team hit their first winning stride this season, and after two extra periods, won 19 to 16.

The first period looked decidedly bad for Newark as New Castle used a 5-man defense that the local tossers couldn't seem to penetrate and when they had the ball, passed it futilely back and forth in the middle of the court till some one made a dash under the basket, but New Castle always had him covered. New Castle in the meantime, added up 7 points before Newark made a single tally. However, before the first half ended, Newark adopted the New Castle defense themselves with equally good results and began to work under the basket for close shots. New Castle, when their defense was adopted and turned against them, shot wildly at the distant basket, doing nothing more than losing the ball. Newark was never guilty of this, as Coach Malin and Captain Whitmore had drilled them so soundly that never a shot was attempted beyond reasonable reach. The half ended 10 to 8 in New Castle's favor.

In the second half Newark put on added steam and tied the score. The game saw-sawed till the final whistle where they were deadlocked 16 to 16. An extra and hectic period produced no score, but in the second extra period Newark held their opponents scoreless while they accumulated a field goal and foul to win by three points.

Riley led for Newark in scoring with 7 points, but from a standpoint of good basketball the starring honors go to Williamson and Holloway. Williamson, while he only scored one basket was on the ball every minute and his team-work was largely responsible for the victory. Holloway, at guard, played a finished game, getting one field goal and shooting four fouls.

Hobbs, forward for New Castle, was high score man of the game, getting a total of 8 points.

Newark's next two games; tonight with Delaware City and Saturday with Tome Institute, will be away from home.

The score:

Newark		Goals—Field Foul Pts.	
Williamson, forward	1	0	2
Eubanks, forward	0	0	0
Riley, center	3	1	7
Jaquette, guard	0	1	1
Holloway, guard	1	4	6
Doordan, forward	0	0	0
Morris, forward, guard	1	1	3
Mayer, guard	0	0	0
Totals	6	7	19
New Castle		Goals—Field Foul Pts.	
Hobbs, forward	3	2	8
Bridgewater, forward	1	2	4
Waldman, center	1	2	4
Carrow, guard	0	0	0
Cranston, guard	0	0	0
Totals	5	6	16

Referee—Gallagher, New Castle.

GIRLS' GAME

The New Castle girls' basketball team were easy for the Newark ladies who defeated them 23 to 9.

Out of the 23 points, Ann Chalmers scored 19, and was the outstanding luminary of the contest. In fact, Ann, with her agility, speed, grace and shooting accuracy would be perhaps, a

welcome addition to the boys' roster. We would like to see her with a full court to range in instead of limited to the narrow confines the girls' rules call for. We believe Ann would have solved that impregnable defense the New Castle boys had before the game was 3 minutes old.

Newark		Goals—Field Foul Pts.	
Chalmers, forward	7	5	19
Robinson, forward	1	0	2
Frazer, center	0	0	0
Dawson, side-center	0	2	2
Singles, guard	0	0	0
Burke, guard	0	0	0
Totals	8	7	23
New Castle		Goals—Field Foul Pts.	
King, forward	3	0	6
Carr, forward	0	3	3
Benton, forward	0	0	0
Miller, side-center	0	0	0
Phillips, guard	0	0	0
Wipf, guard	0	0	0
Hemphill, center	0	0	0
Marsh, side-center	0	0	0
Totals	3	3	9

Referee—Gallagher, New Castle.

Fire Company Bowls Over Bancroft

Last Wednesday night the Aetna Fire Company bowling team started the season with a smash by winning from the strong Bancroft team from Wilmington, 3 games to 0, and 2571 pins to 2290. The game was held at the local Fire House and was the most auspicious opening the Fire Company has ever had.

Kitchen and Gallaher were the high men for Bancroft, with 512 and 514 pins, respectively. Steele and Jackson took scoring honors for Aetna with 594 and 519 pins, respectively.

Bancroft		Goals—Field Foul Pts.	
Kitchen	191	140	181
Reed	161	166	175
Ogle	109	112	113
Gibbons	150	146	132
Gallaher	166	170	178
Totals	778	734	779
Total pins—2290.			

Newark		Goals—Field Foul Pts.	
Sprogel	148	179	186
Crow	160	177	177
Durnall	165	155	111
Steele	194	185	215
Jackson	181	182	156
Totals	848	878	845
Total pins—2571.			

BORDER-TO-BORDER HIGHWAY

Ten years ago there were only five States in which there was as much as a single improved trans-state highway. These States were Massachusetts, Connecticut, New York, New Jersey and Maryland. Today 25 States have improved highways continuous from border to border in at least one direction and 16 of these have completed such trans-state arteries in two directions.

RECORD OF BEST LARGE FLOCK OF PULETS IN EGG CONTEST

The following data was taken from the report of County Agents report and prepared by H. S. Palmer, Extension Poultryman and gives the record and data of the best large flock of pullets in the 1925-1926 Delaware Farm Egg Laying Contest:

"This flock of White Leghorn pullets was hatched April 14, 1925. There were 928 birds on November 1, 1925, and 648 birds on October 31, 1926. During the year 76 died and 206 were culled out.

"Artificial lights were used during the fall and winter from 8 to 9 p. m. to give an evening lunch. The following mash and grain mixtures were fed—Mash, 100 pounds bran, 100 pounds middlings, 100 pounds ground oats, 100 pounds (55%) meat scrap, 100 pounds corn meal, 25 pounds dried skim milk. Grain—2 parts cracked corn, 1 part wheat. Cabbage and savory curly Kale are fed from October 1 to March 31, at the rate of 5 pounds to each 100 hens daily. Birds are turned out on grass range, in the afternoon only, from April 1st to October 1st. No wet mash is used. Birds were housed in a shed roof open front house. Wheat straw was used for litter, and changed 5 times during the last year.

"The average production per pullet by months was: November, 12.5; December, 19.3; January, 14.9; February, 15.1; March, 17.1; April, 18.1; May, 18.9; June, 12.5; July, 21.0; August, 20.0; September, 13.9; October, 11.5. Total, 194 eggs per bird.

"The owner attributes his high production to the following: Colony raised pullet on plenty of good range, and thoroughly matured before production starts. Housed from October 15 to April 1, with plenty of fresh air—openings in front never closed and when litter becomes damp a slight opening is made in the rear top during day time. Birds allowed outside only one-half day in spring, summer and fall. Maintains production around 50 to 60 per cent, never higher, by regulating amount of scratched grain, feeding as much as 14 pounds to 100 birds if necessary."

THETA CHI BEATS

PHI KAPPA TAU

Friday night was a basketball evening in Newark. Besides the University and High School games, the Greek letter brethren fought it out in one game; Theta Chi winning from Phi Kappa Tau by the close score of 17 to 16.

"What's that girl doing with a tobacco pouch?"

"Tobacco pouch nothing! That's her bathing suit bag."

WILSON FUNERAL DIRECTOR

Appointments the Best prompt and Personal Attention

Awnings, Window Shades and Automobile Curtains

C. B. DEAN

Groceries MEATS Fruit

Phone 70

Main Street

CHARLES P. STEELE

FRESH and SALT MEATS

Telephone 44

Newark, Delaware

J. EDW. REYNOLDS & SONS

CLOTHIER and TAILOR

We Hire Collegiate Tuxedos For All College Formals
104 W. 6th ST. WILMINGTON, DEL.

U. Of D. Too Fast For Western Maryland

Barton And Di Joseph, Alone, Score Enough To Win; Score 32-15

On Friday evening on the University Court, Coach Forstburg's basketball quintet gave their old rival, Western Maryland, an exhibition of dazzling basketball. Just to make it a contest, Delaware allowed their guests 15 points while they rolled up 32. Barton and Di Josephs, the Blue and Gold offensive aces, scored 17 points of the total between them.

The rest of the first team kept pace with their part of the program. Jaquette, at center, played strong basketball and scored two field goals, while Captain Creamer and LeCarpentier were features on the defense. Johnny LeCarpentier did not contribute his usual quota of field goals, only getting one, but caged three foul shots.

Ellis was high man for Maryland, though O'Leary, center, contributed two field goals.

Tonight, the Blue and Gold will be on the heights of the Hudson, matching speed and accuracy with the West Point Cadets.

The score:

Delaware		Goals—Field Foul Pts.	
Barton, forward	4	1	9
Di Josephs, forward	3	2	8
Hill, forward	0	0	0
R. Holt, forward	0	0	0
Jaquette, center	2	0	4
Creamer, guard	2	1	5
LeCarpentier, guard	1	3	5
Harris, guard	1	0	2
Taylor, guard	0	0	0
H. Holt, guard	0	1	1
Milne, guard	0	0	0
Schagrin, guard	0	0	0
Totals	13	8	34
Western Maryland		Goals—Field Foul Pts.	
Pelton, forward	0	0	0
Ellis, forward	1	3	5
Williams, forward	1	0	2
Heavens, forward	1	0	2
O'Leary, center	2	0	4
Weigle, guard	0	1	1
Machamer, guard	0	0	0
Weinstock, guard	0	1	1
Van Buren, guard	0	0	0
Totals	5	5	15

Referee—Nicolai.

IN MEMORIAM

In loving memory of our dear Mother, Anna B. Guthrie, who passed away January 14, 1923.

We who loved you sadly miss you As it dawns another year; In the lonely hours of thinking Thoughts of you, Mother dear.

Time passes, but memory lingers of her constant care and love, And will till God calls us together again.

To live in His mansions above.

—Sadly missed by her children.

VICTOR RECORDS! NEWARK RADIO STORE

Delaware Sinks Swarthmore

Blue And Gold Surprises In Brilliant Swimming Victory; Took First In All But One Event

On Saturday afternoon the University of Delaware swimming team met Swarthmore College in their own waters and splashed their way to an impressive 37 to 22 point victory. Delaware took first place in every event but one, and the relay team, composed of Reese, Reybold, Taylor and Nobis, set a new college record for the Swarthmore pool. Nobis set another pool record in the 150-yard back stroke.

Delaware started its winning computation in the first event, the relay, and were never behind in the scoring. In this first event the first three men, starting with Reese, gained over their opponents to such an extent, that Nobis, anchor, had to do little more than paddle to beat Shoemaker of Swarthmore. The time for this contest, 1:59, established a new college relay mark for the Swarthmore pool.

Delaware sprang its biggest surprise of the afternoon when Boyer, of Delaware, beat Thompson, of Swarthmore, by 5 points in the fancy diving contests. Thompson, who was undefeated diving 1925-1926, was considered a "sure thing" in this event.

The closest and most thrilling encounter of the afternoon, and the only one in which Delaware did not place first, was the 50-yard dash. Reybold, Delaware's football captain, assumed the lead at the take off, held it to the turn and half way down the stretch, with Reese, Delaware, and Parrish and Shoemaker, Swarthmore, four feet behind him in a dead heat. At the finish the other three had worked up even to Reybold and it was a matter of split seconds as to who had touched first. After some deliberation, Parrish, of Swarthmore, was returned winner.

Captain Bernard Nobis, of Delaware, set the second record of the meet in the 150-yard back stroke, winning from Sellers, Swarthmore, in 2:10.4, a new pool record. Reybold was third.

Alec Taylor, former Wilmington

(championship) High amphibian, took the 440 under wraps. He finished with ease more than a length in front of Stidham.

Nobis won the 200-yd. breast stroke, taking it without trouble from Lindahl, Swarthmore, with Boyer, Delaware, third.

In the 100-yard, free stroke, Maier, of Delaware, surprised even his teammates with his form in winning handsomely from Gillette, of Swarthmore.

This tank victory was unusually impressive when it is considered that the Blue and Gold Natators have no home waters and have to practice in the Y. M. C. A. pool, Wilmington. While Coach Nobis was confident of a victory, he expected it to be very close as the Little Quakers have an exceptionally strong team. With such an opening, Delaware should have a particularly successful season.

Summaries

Relay—First, Delaware (Reese, Reybold, Taylor, Nobis); second, Swarthmore. Time—1:59.

Diving—First, Boyer, Delaware; second, Thompson, Swarthmore; third, Norton, Swarthmore.

50-yards—First, Parrish, Swarthmore; second, Reese, Delaware; third, Reybold, Delaware. Time—27.6.

150-yard back stroke—First, Nobis, Delaware; second, Sellers, Swarthmore; third, Reybold, Delaware. Time—2:10.4 (pool record).

440-yards—First, Taylor, Delaware; second, Stidham, Swarthmore; third, Mitchell, Swarthmore. Time—6:26.

220-yard breast stroke—First, Nobis, Delaware; second, Lindahl, Swarthmore; third, Boyer, Delaware. Time—3:03.

100-yards—First, Maier, Delaware; second, Gillette, Swarthmore; third, Lattomus, Delaware. Time—1:05.

Dela. Swarthmore	
200-yd. relay	5 0
Fancy diving	5 4
50-yd. dash	4 5
150-yd. back stroke	6 3
440-yd. dash	5 4
200-yd. breast stroke	6 2
100-yd. dash	6 3
Totals	37 22

SIGMA NU LOSES TO MILFORD

Last Thursday evening at Milford, the Sigma Nu basketball team lost to the Milford Community House team, 23 to 17.

Have You A Little Cold In The Head?

Don't let it grow up—

feed it on our special
PINE TAR and COD LIVER OIL
COLD and COUGH MEDICINE

A tried and true remedy for incipient or full blossoming Colds and Coughs

RHODES' DRUG STORE

January Sale!

At this season of the year we are offering to the people of Newark and vicinity an opportunity to share in the great values that we have on display in all departments of the store. There are bargains in seasonable merchandise for the whole family. A visit to our store will convince you of the genuine savings that are possible here.

NEWARK DEPARTMENT STORE

PLA HERE

Delaware S Poultry

The recently State Poultry Ass its drive for mem to list every poultry year. The follow the report of H. S. Poultryman, gives facts and aims of OBJECTS OF PO TI

The objects of the Poultry Association poultrymen to reas interests have "In union there is bring to them the effort along educa tive and business

For a number of New Jersey has a State Poultry A following para tells us something derived from this

"The advantages State Poultry A poultrymen of the listed under three tional, legislative

"From an educa has given the pou tunity to hear at the best speakers subjects which ar

minds of the poult this year the me ciation had the poultrymen from

Coast, and Englat tional meetings at sey each year, spe paid for by the u members of the

"One of the big industry in the which will protec industry. This c by the poultrym presenting their

state and nationa New Jersey State looks with pride which it has been locally and nation

live or six years. on eggs is due to



Vol. II

ANOTHER TO

Diamond pand

C. H. Kie

tor, was fu a total of fi toll position Mr. Kie's operation of in the Dove large board telephone future.

DIAMOND NO

Group N Telep

The Diam pany now payrolls to ness in Del

With the form a tow Milford, G ployees, 29 men. Appro operators a switchboard erators are ment. The in this de commercial take care of and for a tween the C

Telephone constantly that it is Storms, de telephone p New const way. App "plant" d these dutie

PLACE YOUR AD HERE—GET RESULTS

CLASSIFIED ADS PAY BIG!

THE COMMUNITY MARKET PLACE

Delaware State Poultry Association

The recently formed Delaware State Poultry Association has begun its drive for membership and hopes to list every poultry man in the State. The membership fee is one dollar per year. The following excerpts from the report of H. S. Palmer, Extension Poultryman, gives, concisely, the objects and aims of the new association.

OBJECTS OF POULTRY ASSOCIATION

The objects of the Delaware State Poultry Association are to cause the poultrymen to realize as other business interests have already done, that "In union there is strength," and to bring to them the benefits of a united effort along educational, social, legislative and business lines.

For a number of years the State of New Jersey has maintained a strong State Poultry Association. In the following paragraphs the Secretary tells us something about the benefits derived from this association:

"The advantages of the New Jersey State Poultry Association to the Poultrymen of the State might be listed under three headings, educational, legislative and social.

"From an educational standpoint it has given the poultrymen the opportunity to hear at least once a year, the best speakers in the country on subjects which are uppermost in the minds of the poultrymen. For instance, this year the members of the association had the pleasure of hearing poultrymen from Canada, the Pacific Coast, and England. Two big educational meetings are held in New Jersey each year, speakers for which are paid for by the united efforts of the members of the Association.

"One of the big needs of the Poultry Industry in the East is legislation which will protect and promote the industry. This can be obtained only by the poultrymen organizing and presenting their problems to their state and national Legislatures. The New Jersey State Poultry Association looks with pride upon the legislation which it has been able to obtain both locally and nationally during the past five or six years. The present tariff on eggs is due largely to the indus-

trious work of the New Jersey State Poultry Association in presenting the facts to their legislators, and the Tariff Committee. During the past few years the Association has been instrumental in getting an appropriation for the Poultry Department at the College which makes possible research work that has an important bearing upon the problems of the state. During the past two years the Association has secured appropriations for two disease specialists who are working to find some remedy that will control and prevent intestinal parasites. Other legislation which has been obtained is having an important bearing upon the poultry industry.

"Sociability among the poultrymen from the various parts of the state has been developed through auto tours, banquets, field days and other informal get-togethers. These gatherings play a big part in making the New Jersey poultrymen the most open-minded organization to be found, and has developed a wonderful spirit of fellowship and co-operation among the poultrymen of the State."

The Delaware State Poultry Association was organized and hopes to function in a manner similar to that of the New Jersey Association. As the New Jersey Association has found it best to stay out of the field of marketing, the Delawareans will not make any attempts along these lines, for a few years at least. Each year there will be conducted a tour and convention similar to that which took place this fall. Instead of allowing a few public spirited poultrymen to pay the bills for securing speakers as was done this fall, membership fees will be used for this purpose.

"BEVERLY OF GRAUSTARK"

Marion Davies, heroine of many romantic roles, is playing one unlike any other in her entire career, in her Cosmopolitan production, "Beverly of Graustark," which plays tomorrow and Friday at the Hanark Theatre.

Miss Davies has played romantic heroines in historical dramas of the past; has been the center of court intrigues in mediaeval times, has played roles laid in the infancy of New York, but this time she is playing the romantic center in an European court intrigue—but of the modern day.

Miss Davies plays the heroine, an American girl, cousin to the crown prince of a European kingdom, who, to aid her royal relative, engages in a daring masquerade, in which, in his uniform, she impersonates him to foil the plot of a pretender to the throne. Miss Davies' male masquerade is one of the wonders of the screen, so perfect is the illusion. In her uniform, the star is almost a double for the Prince of Wales.

Estate of Annie O. Churchman, Deceased. Notice is hereby given that Letters Testamentary upon the Estate of Annie O. Churchman, late of Christiana, Hundred, deceased, were duly granted unto Rebecca P. Churchman and Sarah B. Churchman on the Seventeenth day of December, A. D. 1926, and all persons indebted to the said deceased are requested to make payment to the Executors without delay, and all persons having demands against the deceased are required to exhibit and present the same duly probated to the said Executors on or before the Seventeenth day of December, A. D. 1927, or abide by the law in this behalf.

Address CHARLES B. EVANS, Atty-at-Law, Ford Building, Wilmington, Del. REBECCA P. CHURCHMAN, SARAH B. CHURCHMAN, Executors. 12,22,10t.

USED CARS AT COST

1926 Ford Sedan.
1924 Ford Touring.
1924 Star Sedan.
1924 Ford Roadster.
1924 Ford Touring.
1923 Chevrolet Touring.
1923 Star Sedan

All these Cars are in good condition and are for sale at our cost.

RITTENHOUSE MOTORS
STAR AGENTS
NEWARK, DEL.

ADVERTISEMENT FOR BIDS

Sealed proposals will be received by the State Highway Department, at its office, Dover, Delaware, until 2 o'clock p. m., February 2, 1927, and at that place and time publicly opened for contracts involving the following approximate quantities:

Contract 76
Rogers Cor.-S. Wilmington Limits, Widening 0.633 Miles

1,500 Cu. Yds. Excavation
3,000 Cu. Yds. Borrow
450 Tone Broken Stone Base Course
1,300 Cu. Yds. Cement Concrete Pavement.

400 Lin. Ft. Transverse Expansion Joint
600 Tons Amiesite
10 Cu. Yds. Class "A" Concrete
100 Lbs. Reinforcement
20 Lin. Ft. 24 in. Corrugated Metal Pipe

Contract 77
Dover-Cheswold, Widening 3.87 Miles

2,025 Cu. Yds. Excavation
2,025 Cu. Yds. Cement Concrete Pavement
1,200 Lin. Ft. Transverse Expansion Joint

Contract 78
Armstrong's Cor.-Blackbird, Widening 3.22 Miles

1,700 Cu. Yds. Excavation
1,700 Cu. Yds. Cement Concrete Pavement
1,000 Lin. Ft. Transverse Expansion Joint
1,200 Sq. Yds. Class "A" Concrete Gutter.

Performance of contract shall commence within ten (10) days after execution of the contract and be completed as specified. Monthly payments will be made for 90 per cent of the construction completed each month.

Bidders must submit proposals upon forms provided by the Department. Each proposal must be accompanied by a surety bond, certified check, or money to the amount of at least ten (10) per centum of the total amount of the proposal.

The envelope containing the proposal must be marked "Proposal for the construction of State Highway Contract No." The Contract will be awarded or rejected within twenty (20) days from the date of opening proposals.

The right is reserved to reject any or all bids.

Detailed plans may be seen and index plans and specifications may be obtained upon receipt of two dollars (\$2.00) which amount will not be refunded.

STATE HIGHWAY DEPARTMENT
1,19,2t Dover, Delaware

Classified Advertising

RATES:

Want, For Sale, For Rent, Lost and Found—Minimum charge 25 cents; each additional word over 25, 1 cent per insertion.

LEGAL: 50 cents per inch first insertion; 30 cents subsequent insertions.

PUBLIC SALES: 50 cents per inch flat.

All advertising copy for this page should be in this office before 4 P. M. Tuesday preceding day of publication. Advertising received Wednesday will not be guaranteed position.

FOR SALE

FOR SALE OR RENT—Part of old McKee Property, 2½ acres; suitable for chicken farm, coal and lumber yard; along side of railroad; fruit trees, raspberry bushes, grape vines, strawberry patch. Apply 24 N. Chapel St.

1,12,3t

FOR SALE—A real bargain, a seven-passenger Lincoln Sedan, 1924 Model, in perfect condition. 1,5,4t Estate of S. J. Wright.

FOR SALE—Twenty-five Barred Plymouth Rock pullets and ten Columbia Rock pullets, now laying. MURRAY'S POULTRY FARM. 1,5,3t Newark, Del.

FOR SALE—Baby chicks. We are now taking orders for baby chicks for future delivery. 1,5,1t MURRAY'S POULTRY FARM

FOR SALE—10-acre Farm, (3 building lots front) with 7-room Bungalow, all conveniences, including gas; barn; chicken houses and brooders; fruit of all kinds. W. CARLISLE, Newark, Del.

12,8

FOR SAND and dirt, apply NORMAN SLACK, 9,15, Phone 197 R

BUILDING LOTS for sale on Delaware avenue, opposite Wolf Hall. Apply 7,14 L. HANDLOFF.

CIDER MILL—Pressing Tuesdays and Fridays, or by appointment. Also Sweet cider for your autumn festivities for sale. J. E. MORRISON, Phone 238-J Newark, Delaware.

10,13,1t

WANTED

WANTED—A small square antique clock, with painted glass below the face. In good condition. Call 1,12,3t Newark 195.

WANTED TO BUY—Boxwood bushes and trees. Apply S. A. SCOTTEN, 1602 W. 14th St., Wilmington, Del.

1,5,3t

LEGAL NOTICE

Estate of Isabel P. Wright, Deceased. Notice is hereby given that Letters of Administration upon the Estate of Isabel P. Wright, late of White Clay Creek Hundred, deceased, were duly granted unto John Pilling Wright, Norris N. Wright and Ernest B. Wright on the Second day of December, A. D. 1926, and all persons indebted to the said deceased are requested to make payments to the Administrators without delay, and all persons having demands against the deceased are required to exhibit and present the same duly probated to the said Administrators on or before the Second day of December, A. D. 1927, or abide by the law in this behalf.

Address JOHN PILLING WRIGHT, NORRIS N. WRIGHT, ERNEST B. WRIGHT, Administrators. CHARLES B. EVANS, Atty. at Law, Ford Building, Wilmington, Delaware.

12,8,10t.

LEGAL NOTICE

Estate of John J. Stewart, Deceased. Notice is hereby given that Letters Testamentary upon the Estate of John J. Stewart late of White Clay Creek Hundred, deceased, were duly granted unto Farmers Trust Company of Newark on the Thirteenth day of November, A. D. 1926 and all persons indebted to the said deceased are requested to make payment to the Executor without delay, and all persons having demands against the deceased are required to exhibit and present the same duly probated to the said Executor on or before the Thirteenth day of November, A. D. 1927, or abide by the law in this behalf.

Address FARMERS TRUST COMPANY OF NEWARK, Executor. 12,15,10t Newark, Delaware.

FOR RENT

FOR RENT—House and lot on Lincoln Highway, one-half mile west of Newark. Immediate possession. 1,5,3t. G. W. MURRAY.

FOR RENT—House and five acres of ground; orchard, use of three chicken houses, garage, permanent pasture for three head of stock, stable room, etc. Possession February first. 1,5,3t. G. W. MURRAY.

FOR RENT—6-room house with bath. On Elliott Heights. Phone 208 M. 1,5,4t. J. FRANK ELLIOTT.

FOR RENT—House, South Chapel street, electric light, sewer, garage, chicken house, big garden. 1,5,2t. E. L. RICHARDS.

FOR RENT—Furnished dwelling, 8 room and bath on first and second floors. Lavatory, new heater, garage. 204 West Main street. FRANCIS A. COOCH, Newark, Del.

FOR RENT—Small-sized House. Apply 3,10,1t L. HANDLOFF.

HIGHEST price paid for live stock. Call or write I. PLATT, Phone 289 Newark, Del.

For Square Deal Auctioneer SEE

John T. Kennelly
PHONE 213 R4 NEWARK

LEGAL NOTICE

Estate of Andrew Lewis Fisher, Deceased. Notice is hereby given that Letters Testamentary upon the Estate of Andrew Lewis Fisher, late of White Clay Creek Hundred, deceased, were duly granted unto Farmers Trust Company of Newark, on the Twenty-fifth day of October A. D. 1926, and all persons indebted to the said deceased are requested to make payment to the Executor without delay, and all persons having demands against the deceased are required to exhibit and present the same duly probated to the said Executor on or before the Twenty-fifth day of October A. D. 1927, or abide by the law in this behalf.

Address FARMERS TRUST COMPANY OF NEWARK, Executors. 11,10,10t. Newark, Delaware.

Legal Notice

Estate of Samuel J. Wright, Deceased. Notice is hereby given that Letters Testamentary upon the Estate of Samuel J. Wright, late of White Clay Creek Hundred, deceased, were duly granted unto John Pilling Wright, Norris N. Wright and Ernest B. Wright on the Twenty-first day of October A. D. 1926, and all persons indebted to the said deceased are requested to make payment to the Executors without delay, and all persons having demands against the deceased are required to exhibit and present the same duly probated to the said Executors on or before the Twenty-first day of October A. D. 1927, or abide by the law in this behalf.

Address CHARLES B. EVANS, Atty. at Law, Ford Building, Wilmington, Delaware. JOHN PILLING WRIGHT, NORRIS N. WRIGHT, ERNEST B. WRIGHT, Executors. 11,10,10t.

Legal Notice

Estate of Mary B. Donnell, Deceased. Notice is hereby given that Letters Testamentary upon the Estate of Mary B. Donnell, late of White Clay Creek Hundred, deceased, were duly granted unto Charles B. Evans on the Seventeenth day of November, A. D. 1926, and all persons indebted to the said deceased are requested to make payment to the Executor without delay, and all persons having demands against the deceased are required to exhibit and present the same duly probated to the said Executor on or before the Seventeenth day of November, A. D. 1927, or abide by the law in this behalf.

Address CHARLES B. EVANS, Executor. 11,24,10t Ford Building, Wilmington, Delaware.

TELEPHONE NEWS

VOL. II JANUARY, 1927 No. 1

ANOTHER ADDITION TO DOVER BOARD

Diamond State Company Expanding City's Plant

According to C. H. Kiehline, Wire Chief in Dover for the Diamond State Telephone Company, the telephone switchboard was recently enlarged there for handling the city's telephone calls.

An additional position, providing space for another local operation, was furnished. This gives Dover a total of five local positions and eight toll positions.

Mr. Kiehline, who has charge of the operation of the telephone equipment in the Dover office, says the new enlarged board will take care of Dover's telephone calls for some time in the future.

DIAMOND STATE CO. NOW EMPLOYS 433

Group Needed to Carry On Telephone Business in the State

The Diamond State Telephone Company now has 433 employees on its payroll to carry on the telephone business in Delaware.

With their families this group would form a town as large as Newark or Milford. Of the total number of employees, 298 are women and 135 are men. Approximately 265 young women operators are required to operate the switchboards in the State. These operators are part of the Traffic Department. The total number of employees in this department is 278. Twenty commercial employees are needed to take care of contracts for new service and for miscellaneous business between the Company and the public.

Telephone plant and equipment is constantly under supervision to see that it is operating satisfactorily. Storms, floods and fires damage the telephone plant, which means repairs. New construction is constantly under way. Approximately 132 people in the "plant" department are required for these duties.

More Plant for New Castle

Equipment has just been received at the New Castle central office for increasing the number of subscribers' telephone lines that can be accommodated at the switchboards, according to officials of the Diamond State Telephone Company.

The additional facilities that will shortly be at the disposal of subscribers are in take care of the growth in the section by providing a greater number of terminals at the switchboard.

Installation work is to start this month and is scheduled for completion before February. E. M. Closer, District Installation Foreman, will be in charge. At the present time about 2000 local calls and from 250 to 350 toll calls are connected daily through the New Castle switchboards.

Out-of-town telephone calls are on the increase . . . why? . . . they are business getters.

POLE LINE JOB BEING ENLARGED

About 300 More Poles to be Placed in Holly Oak Section

The work of rebuilding pole lines in the Holly Oak section has been extended, according to J. M. Baldwin, District Engineer for the Diamond State Telephone Company.

The original plans that called for the placing of 300 poles have been enlarged to include the setting of 300 additional poles. The "rebuild job," as it is called by the telephone people, involves the replacement of present pole lines by higher poles. This will permit the accommodation of electric light wires as well as telephone wires on the same pole line.

The joint usage of these poles by both the Diamond State Telephone Company and the Wilmington and Philadelphia Traction Company will cause a saving in construction costs. There will no longer be a need for the two-pole lines along the roads in the section, and the plan has the further advantage of allowing rural people in the locality to get electric current which formerly was not possible in some sections.

DIAMOND STATE CO. TO LOWER CABLES

Work in Conjunction With Deepening Chesapeake and Delaware Canal

When the Chesapeake and Delaware Canal is closed to navigation between the 31st of January and the 15th of February, in order to reconstruct it as a sea-level canal, the Diamond State Telephone Company will utilize this time for lowering their submarine telephone cables to the lower canal level, according to J. M. Baldwin, District Engineer for the Telephone Company.

Switchboards in Wilmington, Dover and New Castle have recently been enlarged. Bridgeville, Rehoboth and Lewes are the towns where additional switchboard space will shortly be required.

These extensions to the telephone plant are for the purpose of handling the increased number of telephone calls and are indicative of the healthy growth that is characterizing the State generally and the growing popularity of Delaware's watering places.

Each of the offices where the new construction is planned will receive one additional switchboard section. The work of installing them is scheduled for completion before the opening of next summer's vacation season, according to Mr. Dodge.

MILFORD GETS NEW TELEPHONE OFFICE

Building Changes to Start Shortly

Preparations are being made by Diamond State Telephone Company to move from the present central office in Milford to a new office in the Masonic Building.

Certain building changes are to be made at the new location before the move is made. Switchboards are to be installed as soon as these building changes are completed.

Five operating positions are to be furnished initially to handle the telephone traffic in the city. Two of these positions are for toll calls and three for handling local calls. There is sufficient space in the new quarters to accommodate growth for several years in the future.

For Quick Action . . . use the out-of-town telephone service.

Women's College Notes

Because of illness during the Christmas holidays, Miss Allen and Miss Vandeventer were unable to return to college until Saturday.

Miss Richardson attended the meetings of the Modern Language Association at Harvard University, December 28-31.

The social event of the week will be the Junior Prom, which will be given at Old College on Friday evening. The members of the Senior Class will be guests of the Junior Class. Sophomores and faculty members will also be privileged to attend. One hundred and fifty couples have "signed up" for attendance. The chairman of committees are as follows: Music, Hattie McCabe; favors, Alice Holloway; refreshments, Grace Smedley; waitresses, Sally Coffin; patronesses, Ruth Lertner; programs, Christine Baker; novelties, Frances Malcom. Marjorie Johnson, president of the Junior Class, and Elizabeth Wiley, president of the Senior Class, will head the receiving line. The patronesses will be: Dean Robinson, Mrs. Hallinan, Mrs. Dutton, Miss Parker, and Miss Kelly, Junior Class advisor. Katherine Horton, vice-president of the Junior Class, will lead the grand march.

The members of the Freshman Class who have been selected by their "big sisters" to serve are: Mary Louise Mayer, Romaine Robinson, Helen Stevens, Edith Borlandoff, Ethel Merritt, Elsie Hubert, Margaret Middleton, Ruth Gray, Ina Langrell, Martha Weldon, Mildred Sherwood, Edith Kimes, Helen Morgan, Dorothy M. Hayes, Eunice Scotten, Pauline Thornley, Sara Crews, Barbara King, Rebecca Carr, Katharine Thawley, Agatha Hogan, Dorothy Stanley, Emma de Huff, Sara Goldstein, Sara Camper, Violet Beste, Ruth Phillips, Lois Simmons, Ann Nutter, Helen Holt, Gladys Fleming, Katharine Spicer, Elizabeth Donahue, Frances Adkins, Sara Stearns, and Dorothy Roe. Romaine Robinson will be in charge of the girls who serve.

Lillian Benson has been appointed chairman of a committee to select a class ring for the Junior Class. The ring will not be worn by the students until after mid-year.

At vesper service on Sunday evening, Jean Lobach gave a report of the National Student Conference, which she attended, in Milwaukee, December 26 to January 2. Margaret Nunn was leader. Lois Simmons and Adelaide Downes sang.

The students who are living at the Practice House entertained at a formal dinner Wednesday evening. The guests were Mr. A. G. Wilkinson and Miss Irene Wilkinson and Professor and Mrs. Helm. The host was Katherine Horton and Olive Murray was hostess.

This evening the same group of girls will entertain informally at dinner. The guests will be Peg Reese and Norma Russell, of Women's College. Katherine Horton will be hostess and Grace Smedley host.

A meeting of the Press Club was held last Wednesday. Each week a member of the Club and a Freshman have been writing feature articles on college subjects for the newspapers. This week Edith Munn and Margaret Middleton will write up Edwin Markham's speech at College Hour and Marjorie Johnson will write the Junior Prom. After mid-year, the new members of the Club from the Freshman Class will be selected by the present members.

Edwin Markham, poet and lecturer, who will speak at College Hour today, was the guest at dinner last evening at Women's College. The other dinner guests were Dr. Benner and Professor Code.

The Wilmington New Century Club will present to New Castle Hall a library of two hundred volumes, in honor of the ninety-third birthday of Miss Emma Worrall. The presentation will be made at a tea on New Castle Hall on January 22, at three o'clock, by Mrs. David Ward, president of the Wilmington New Century Club. The gift will be accepted by Agatha Holloway, chairman of the New Castle Hall.

Edwin Markham Guest Of University

(Continued from Page 1)

garded with the foremost poets of the time and William Dean Howells called him the greatest of the Americans. Howells acclaimed him as one of the major prophets of America. Benjamin De Casseres, writing in the December "American Mercury" speaks of him as follows, in part:

"Edwin Markham, the Blessed Diamond of American poetry—decent, flawless, virginal. He is an artist, a craftsman, some reproaches, but not more than praise."

"The Man With the Hoe" is, technically, to me, made from its sentimentality, a great poem. There is a vastness, a power and a passion in it. It is Markham on his soap box, but his soap box is a star.

"There is in Markham's poetry a gorgeous music—sometimes Miltonic, sometimes Swinburnian, as in 'The Crowning Hour'—I saw you there with the sea-girls floating."

And I followed you fast over rock and reef

And you sent a sea fire into my being.

And he has the magic of the great line:

"We are caught in the coils of a God's romance."

or

"A spider bars the road with filmy ropes"

Where once the feet of Carthage thundered by."

Markham is particularly known to students of verse for his beautiful quatrains. He has written and published considerable poetry. The three most widely distributed volumes of his verse are: "Gates of Paradise and Other Poems," "Lincoln and Other Poems," and "The Man With the Hoe and Other Poems." The last named volume, which contains his most famous poem, was illustrated by Howard Pyle.

Dr. C. L. Benner, who is directing "College Hour" this semester, is responsible for bringing Edwin Markham here.

DOG TAGS

The 1927 dog tags were delivered on Monday and may be had on application to Town Officer James Keeley.

REPORT OF CONDITION

OF THE

Newark Trust And Safe

Deposit Company

at Newark, in the State of Delaware, at the close of business,

ON

December 31, 1926

RESOURCES

Loans and Accounts	\$960,075.50
Overdrafts	349.18
Investments (including premiums on bonds)	154,338.46
Banking house (including furniture and fixtures)	31,600.00
Other real estate owned	10,200.95
Lawful reserve with Federal Reserve Bank or other reserve agents	134,564.20
Checks and other cash items	678.63
Cash on hand	26,663.78
Other Resources	8,103.48
Total Resources	\$1,428,570.16

LIABILITIES

Capital Stock paid in	\$100,000.00
Undivided Profits (less expenses and taxes paid)	56,709.09
Due to all banks	5,564.76
Individual Deposits (including Postal Savings)	1,126,296.71
Total Liabilities	\$1,428,570.16

State of Delaware,

County of New Castle,

I, Warren A. Slinger, Treasurer of the above-named bank, do solemnly swear that the above statement is true to the best of my knowledge and belief.

WARREN A. SLINGER, Treasurer

Correct—Attest:

CHAS. E. HUNTER, Secretary

JOSEPH W. HUNTER, President

Notary Public for Delaware

My Commission Expires June 1, 1927.

PAUL H. HARRIS, Notary Public

My Commission Expires June 1, 1927.

ROBERT H. HARRIS, Notary Public

My Commission Expires June 1, 1927.

JOHN H. HARRIS, Notary Public

My Commission Expires June 1, 1927.

WILLIAM H. HARRIS, Notary Public

My Commission Expires June 1, 1927.

EDWARD H. HARRIS, Notary Public

My Commission Expires June 1, 1927.

FRANK H. HARRIS, Notary Public

My Commission Expires June 1, 1927.

ALFRED H. HARRIS, Notary Public

My Commission Expires June 1, 1927.

CHARLES H. HARRIS, Notary Public

My Commission Expires June 1, 1927.

JOHN H. HARRIS, Notary Public

My Commission Expires June 1, 1927.

EDWARD H. HARRIS, Notary Public

My Commission Expires June 1, 1927.

FRANK H. HARRIS, Notary Public

My Commission Expires June 1, 1927.

ALFRED H. HARRIS, Notary Public

My Commission Expires June 1, 1927.

Farm Bureau Campaign in Full Swing

The Farm Bureau membership campaign is now in full swing. H. C. Milliken, president of the Farm Bureau, stated that most of the solicitors were at work in their respective communities Monday and Tuesday. Mr. Milliken is greatly pleased with the attitude shown by the solicitors. He stated that if the solicitors kept working like they have been on Monday and Tuesday that a good membership is certain.

H. Wallace Cook, chairman of the Newark community, stated that he secured an enrollment of fifty per cent of those farmers whom he has seen. Mr. Cook estimates that at this rate a membership in the Farm Bureau of 500 to 700 would be secured. However, that large a membership is not anticipated. If a membership of 350 to 400 is secured it will make a very workable organization. An organization of this strength would be in a position to go before the present session of the Legislature and secure legislation which would be of material aid to the farmers of the county.

Mr. George C. Burge, chairman of the Middletown community, is managing a successful campaign. Mr. Burge reported that they were securing the better farmers in the community. Mr. Burge stated that if we secure 150 to 200 of the better class of farmers as members in the Farm Bureau that it would make a very strong organization.

Mr. J. D. Reynolds, of Middletown, president of the Delaware State Farm Bureau, is much pleased with the progress that is being made in the membership drive in New Castle County. It is Mr. Reynolds' thought that with a successful membership drive in New Castle County that Kent and Sussex will follow the precedent set. Mr. Reynolds is very anxious that we begin the new year with a strong State Farm Bureau.

DANCE

The Minerva Council, No. 17, D. of P., will hold a Square Dance in Fraternal Hall Saturday evening, January 15. Music by the Melody Boys Orchestra.

Man is but a worm. He comes along, giggles about a bit, then some chicken gets him.

SHUBERT PLAYHOUSE

Du Pont Building Wilmington, Delaware Phone 696

3 NIGHTS MONDAY, JAN. 17

BEGINNING Wednesday

L. LAWRENCE WEBBER

Presents

ALICE BRADY

IN

"LADY ALONE"

A play in three acts by

Letitia McDonald

JOSEPH KILGOUR AUSTEN FAIRMAN

EDWARD E. WEVER LOUISE GALLOWAY

AURIEL LEE LEE SMITH

KIRK BROWN WILLIAM W. CRIMANS

WILLIAM LEITH BILLY PEARCE

Staged by Lionel Atwill

Produced under the supervision of David Wallace

PRICES: NIGHTS, \$10 to \$15

WEDNESDAY MATINEE, \$5 to \$15

Seats

Stalls

SHUBERT PLAYHOUSE

Du Pont Building Wilmington, Del. Phone 696

3 NIGHTS THURSDAY, JAN. 20

COMMENCING AT 8.20

Matinee Saturday at 2.30

EVERY RED HEADED MAN

EVERY RED HEADED WOMAN

EVERY RED HEADED CHILD

THE STRAWBERRY BLONDE

Marlin Brown's

COMEDY ODDITY

With a Thrilling Broadway Line

Direction of James Nayor

PRICES: NIGHTS, \$10 to \$15

SATURDAY MATINEE, \$5 to \$15

Seats

Stalls

SHUBERT PLAYHOUSE

Du Pont Building Wilmington, Del. Phone 696

3 NIGHTS THURSDAY, JAN. 20

COMMENCING AT 8.20

Matinee Saturday at 2.30

EVERY RED HEADED MAN

EVERY RED HEADED WOMAN

EVERY RED HEADED CHILD

THE STRAWBERRY BLONDE

Marlin Brown's

COMEDY ODDITY

With a Thrilling Broadway Line

Direction of James Nayor

PRICES: NIGHTS, \$10 to \$15

SATURDAY MATINEE, \$5 to \$15

Seats

Stalls

SHUBERT PLAYHOUSE

Three Ambulance Calls

The Newark ambulance has been called three times during the past week, making two trips to Wilmington and one to Lansdale, Pa.

On Friday William Cunningham and William Clancy took Mrs. Lydia Oley, mother of Mrs. Reese Griffin, to her home at Lansdowne, Pa. Mrs. Oley had been ill at her daughter's.

Saturday night, the ambulance, with Ira Shellenor and William Clancy on the seat, took Mrs. James Walker, living on Kells avenue, to the Delaware Hospital. Yesterday, Dean Steel, young daughter of Mrs. Katherine Steel, was taken to the Homeopathic Hospital, Wilmington, for an operation. William Clancy and F. L. Crow made the trip.

PROF. KIRKBRIDE RETURNS

Professor Raymond Kirkbride, who is directing the Foreign Study Group of the University of Delaware during the year of study in France, is expected to arrive in New York today on the "Paris." Professor Kirkbride will begin at once on a tour of colleges and universities, to interest students in joining the group for next year. He will return to France about February 1st.

Dr. Hallinan went to New York today to meet Professor Kirkbride.

USED CAR PRICES

Reduced for January Clearance

An excellent assortment of open and closed models, both large and small.

You can save money by making your selection this month

EASY PAYMENTS IF DESIRED

Ford Tudor Sedan \$50.00 Cash

Chevrolet Touring 50.00 Cash

Dodge Touring 50.00 Cash

Buick Sedan 250.00

Durand Coupe 170.00

Studebaker—Nash—Hudson—and many others.

Wilmington Auto Co.

Newark Branch

Newark New Century Club

The meeting of the Century Club for January 10, 1927, was opened by the president, Mrs. Cobb.

A financial report was read by the president, showing that the club is in a prosperous condition.

A letter of appreciation from the Superintendent of the Delaware Colony at Stockley was read, thanking the club for its donation at Christmas.

Also a letter was read from Mrs. Mary Sherman, president of the General Federation, urging the carrying out of a program for "Better Equipped Homes." Mrs. Sherman sent a questionnaire to ascertain the achievements and ideals of the club.

The answering of this was left to a committee composed of Mrs. Bowen, Mrs. Nields and Mrs. Durant.

Plans for a spring luncheon were discussed and voted favorably upon.

Mrs. Durant spoke of the many delightful programs in store for club members and urged each member to avail herself of the opportunity of attending these interesting meetings.

It was decided to have Dr. Benner speak in the afternoon in the future rather than in the evenings.

After the business discussions, Mrs. Barnes sang most entertainingly, two selections, playing her own accompaniment. Her first selection was "Caravan," and her second selection, "Mother O' Mine."

Mrs. Paine read a most interesting and informative article on "Old Shaws." Chatter and tea ended this delightful afternoon.

Signed, Grace Wheelless,

Secretary, pro tem.

"Able, your shirt tail is out."

"Out! Were his it out!"

"Out were de vest begins."

OBITUARY

MRS. LAURA W. RICHARDS

Mrs. Laura W. Richards, 77 years of age, wife of Dutton Richards and daughter of the late Mr. and Mrs. Kinsey Whitman, died here yesterday at the home of her daughter, Mrs. Thomas MacClary.

Mrs. Richards had lived until recently in the country near Newark, but since the wife's illness have lived with their daughter here. Besides her husband, Mrs. Richards is survived by six children: Mrs. Thomas MacClary, of this town; Mrs. Joseph Vaughn, Nathaniel Richards, John Richards, all near Newark; Mrs. Samuel Seyler, of Marlinton, and Charles Richards, of Kemplerville. Mrs. Richards is also survived by nine grandchildren and one great grandchild.

Mrs. Richards was a member of White Clay Creek Church, and deeply beloved by a host of friends.

Funeral services will be held at the home of her son-in-law, Thomas MacClary, on East Main street, at 2 o'clock. Interment at White Clay Creek Cemetery.

FIELD FIRE THIS MORNING

At eleven o'clock this morning the Newark Fire Company responded to an alarm sent from Harmony Station. They extinguished a field fire.

DIVIDEND NOTICE

Newark, Del., January 4, 1927.

At a regular meeting of the Board of Directors of the Farmers Trust Company of Newark, held this day, a semi-annual dividend of 8 per cent (\$4.00 a share) was declared; payable February 1, 1927. Checks will be mailed.

J. E. DOUGHERTY,

Treasurer.

NEWARK OPERA HOUSE

NEWARK'S LEADING THEATRE

THURSDAY and FRIDAY, JAN. 13-14

JACK HOLT — FLORENCE VIDOR

IN

"SEA HORSES"

An intense drama of the tropics tinged with a romance.

SATURDAY, JAN. 15

LEFTY FLYNN

IN

"SMILING AT TROUBLE"

NEWS COMEDY

MONDAY and TUESDAY, JAN. 17-18

RAYMOND GRIFFITH

IN

"YOU'D BE SURPRISED"

A real surprise is in store for you.

WEDNESDAY, JAN. 19

ART ACORD

IN

"THE TERROR"

A western.

HANARK THEATRE

EVERY PATRON AN HONORED GUEST

All that's worth while in Photoplays

THURSDAY and FRIDAY, Jan. 13-14

"Beverly of Graustark"

By George Barr McCutcheon

WITH

MARION DAVIES, ANTONIO MORENO

RAY D'ARCY and CREIGHTON HALE

SATURDAY, Jan. 15

BEN WILSON