

Square Dancing
At Medill School
Newark YMCA Square
Dancing this Friday
School at 8:30 p.m.
Dannenhauer calling
square dances are open
to all as well as experience
Informal dress is advised

ARE MANY FINE

any extras, 3 bedrooms,
bath, L.R. D.R. & kitchen
outside entrance. Oil
condition inside & out.

Est. Beautiful lawn.
nt condition
ater, 5 miles to Newark
ade trees, H.W. Floors,
ungallow, 2-car garage,
e, with Washer, Dryer,
nt condition
Floor Apt. 2 BR, living
nished

us before buying.

267 E. Main Street

Postmaster Cooch

es Advantages

Early Mailing

Postmaster Cooch

ery Assured With

re In Early Planning

time to start those Christ-

time to start those Christ-

time to start those Christ-

time to start those Christ-

time to start those Christ-

time to start those Christ-

time to start those Christ-

time to start those Christ-

time to start those Christ-

time to start those Christ-

time to start those Christ-

time to start those Christ-

time to start those Christ-

time to start those Christ-

time to start those Christ-

time to start those Christ-

time to start those Christ-

time to start those Christ-

time to start those Christ-

time to start those Christ-

time to start those Christ-

time to start those Christ-

time to start those Christ-

time to start those Christ-

time to start those Christ-

time to start those Christ-

time to start those Christ-

time to start those Christ-

time to start those Christ-

time to start those Christ-

time to start those Christ-

time to start those Christ-

time to start those Christ-

time to start those Christ-

time to start those Christ-

time to start those Christ-

time to start those Christ-

time to start those Christ-

time to start those Christ-

time to start those Christ-

time to start those Christ-

time to start those Christ-

time to start those Christ-

time to start those Christ-

time to start those Christ-

time to start those Christ-

time to start those Christ-

time to start those Christ-

time to start those Christ-

time to start those Christ-

time to start those Christ-

time to start those Christ-

time to start those Christ-

time to start those Christ-

time to start those Christ-

time to start those Christ-

time to start those Christ-

time to start those Christ-

time to start those Christ-

time to start those Christ-

time to start those Christ-

time to start those Christ-

time to start those Christ-

time to start those Christ-

time to start those Christ-

time to start those Christ-

time to start those Christ-

time to start those Christ-

time to start those Christ-

time to start those Christ-

time to start those Christ-

time to start those Christ-

time to start those Christ-

time to start those Christ-

time to start those Christ-

time to start those Christ-

THE NEWARK POST

The Newark Post, Newark, Delaware, Thursday, November 26, 1959

For News
Of People You Know
Read The Post

PRICE SEVEN CENTS

Steel Strike Halts Production At Chrysler Plant In Newark

Local Auto Assembly Plant Closed Yesterday After Second Shift, Idling Some 3,000 Employees; Plans Call For Resumed Production In Newark By Dec. 14

After staving off a shutdown for the past month by a speed work schedule, Chrysler Corporation's Delaware assembly plant at Newark suspended car production at the end of second shift operations yesterday.

Approximately 3,000 of the plant's 5,000 employees will be affected by the shutdown, according to Louis B. Kazmerow, plant manager.

Portage of steel parts was given as the reason for the temporary shutdown. Workers who have been on three and four-day shifts since late October.

Until Dec. 14, the plant was to resume production on Dec. 14, but the exact date will depend on replenishment of steel parts.

Simultaneously, laid-off workers were assured that the company intended to advance payments for group life and health and accident insurance policies, carried by the employer.

Prolonged steel strike had repercussions in the local industry, causing General Motors plant to suspend assembly operations as of Oct. 21, idling some 2,100 workers.

Slow Down
That time, Chrysler's Newark plant slowed down to a four-day shift in order to stretch out steel on hand.

Then Chrysler has been going on a week-to-week basis, employees who will be retained by the indefinite shutdown in office, maintenance and other work not directly connected with line production.

Detroit, Chrysler announced their plant closings because of shortages. The shutdowns will cost Chrysler about \$2,430,000, the corporation said. It will suspend production of its Hamtramck plant in suburban Detroit, Mich.

The Los Angeles assembly plant, a company spokesman said, will be furnished with steel orders yesterday, only three of seven assembly plants will be operating.

The company already has stopped production of Valiants, Imperials and Dodge trucks.

Postmaster Cooch es Advantages Early Mailing

Postmaster Cooch

ery Assured With

re In Early Planning

time to start those Christ-

time to start those Christ-

time to start those Christ-

time to start those Christ-

time to start those Christ-

time to start those Christ-

time to start those Christ-

time to start those Christ-

time to start those Christ-

time to start those Christ-

time to start those Christ-

time to start those Christ-

time to start those Christ-

time to start those Christ-

time to start those Christ-

time to start those Christ-

time to start those Christ-

time to start those Christ-

time to start those Christ-

Moore, Wilson Win 4-H Congress Trips To Chicago



David Moore

David Moore and Kenneth Wilson will attend the National 4-H Club Congress in Chicago next week as delegates from New Castle County. David, 19, is boys' agricultural project winner, and Kenneth, 15, is dairy program champion.

Their awards have been presented respectively by International Harvester and the Oliver Corp.

Moore, a Newark High School graduate, is now a full-time farmer. Agricultural judging has been his specialty in nine years of 4-H work. He won the county dairy judging championship twice.

David has had 21 head of cattle, raised 100 chicks; and this year added five acres each of wheat and corn for his first crops.

As Best 4-H Club president he has conducted classes for younger members in the care and maintenance of tractors.

"Mamby" was Kenneth Wilson's first dairy calf and an encouraging partner in his project. She has been named grand champion Ayrshire at four county shows and has placed first in 4-H and open class competition.

Beginning with "Mamby," Wilson has had 24 dairy animals and has won the county dairy achievement award each year with his showings.

A member of the New Castle county judging team since 1956, Kenneth is vice-president of the Blue Hen 4-H Club and a Newark High School freshman.

Aetna Extends Fire At Ray Street Residence

Chief Clifford Knott led 21 men with three trucks of the Aetna Hose, Hook and Ladder Company in extinguishing a fire reported at 430 p.m. last Friday in a one-story residence on Ray Street.

The building was half destroyed in the fire caused by an oil burner flare-up.

Last Saturday at 8:20 a.m., Deputy Chief George Smith led 19 men with three engines in extinguishing an oil burner fire at 54 North Chapel Street with no damage.

Newark volunteer firemen led by Asst. Chief George Smith put out a field fire on Ogletown Road last Sunday after a 12:05 p.m. alarm.

Junior High Pupil Clayne Chase Obtains Radiosonde, Weather Data From Rooftop

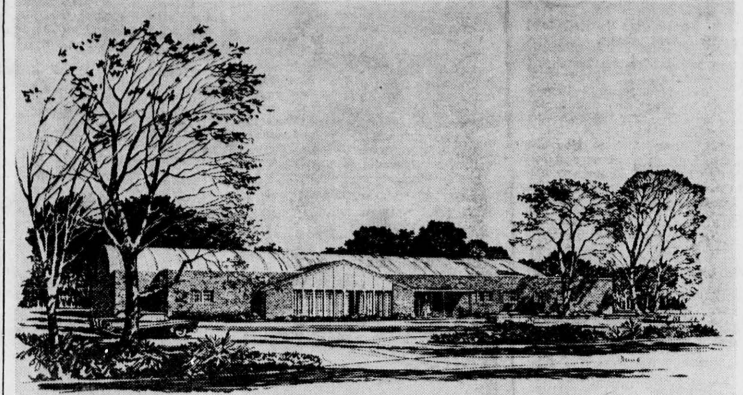
Thanks to the good fortune and efforts of Clayne Chase of 30 Lenape Lane in Silverbrook, academic science classes at Ogletown Junior High School were able to gain first-hand knowledge on the work of the United States Weather Bureau.

The Chase family was interrupted on a recent Sunday afternoon by a strange sound coming from the roof of their home. Investigating, they found that an unfamiliar white object had fallen from the sky onto the roof. Reading the printed thereon, they found it to be a "Radiosonde."

A Radiosonde, sometimes referred to as a "Windsonde," is an instrument used by the U. S. Weather Bureau to gain information about atmospheric conditions.

This information—primarily wind velocity, direction, and air pressure—is relayed by battery-operated electronic instruments to tracking stations on the ground, where it is collected and sent to Weather Bureau stations across the country to assist in forecasting weather reports.

Newark Shopping Center Bowling Alley



A 32-lane bowling alley to be constructed at the Newark Shopping Center is shown above in an artist's sketch. Scheduled for completion by May 1, 1960, the addition to the Newark Shopping Center has been designed by J. Eldridge Moxley & Son, architect, who designed the original center facilities.

3 Gold Trophies At Lamb Banquet Awarded At Dover

Halloek duPont, Ed Foster Honored by Delaware Sheep And Wool Producers Ass'n

Three gold trophies were awarded by the Delaware Sheep and Wool Producers Association at the recent annual lamb banquet in Dover.

Little Miss Bo Peep, nine-year-old Stephanie Turbuton of Camden, presented S. Hallock duPont with the Golden Lamb Award.

Calvin Hollis, superintendent of the sheep show at the Kent-Sussex Fair, said the award is given each year as "an expression of appreciation by the Delaware Sheep and Wool Producers Association to the person outside the association who has done the most for the sheep industry in the state."

Mr. duPont established a trust which made possible the S. Hallock duPont chair of animal husbandry at the University of Delaware.

The position has been filled by Dr. John H. Shropshire, who has helped initiate livestock programs with 4-H Clubs and livestock organizations, and has begun several research projects on the University Farm.

Trustmaster George M. Worrlow, dean of agriculture at the University of Delaware, said Mr. duPont's trust "will enable us to serve more adequately the livestock producers of the state, a segment of our agriculture that is becoming economically more important each year."

This growth in the livestock industry tends to stabilize our total agricultural industry by providing greater diversification.

Dr. Shropshire reported on the Delaware Junior Fair Lamb Show and Sale held Nov. 7 at the Harrington Fairgrounds. He said the average price paid at the show was two or three cents higher than the average price paid at the Eastern National. This indicates the interest of Delaware people in the program, he said.

Kent County Agricultural Agent George K. Vapaa was given a special gold trophy in appreciation for his work with the organization.

Edward Foster of Newark, received the breeder of the year trophy presented by association president Jake Duke, Townsend.

Honor Roll Pupils Announced at NHS Central Jr. High

Honor roll pupils have been announced at Newark senior and Central junior high schools for the first marking period.

Senior high pupils named on the first honor roll include sisters Elizabeth Able, Sam Allison, Jack Baylis, Nancy Lambert, Beth Levine, Kay Logan, Barbara Walls, Cynthia Wheeler, Phyllis Williams, and Judy Zimmerman.

Eleventh grade first honor roll pupils are Barbara Connolly, Patricia Crowe, Joyce Cunningham, Chris Donoho, Penny Hall, Thomas Kirch, Jill Rasmussen, Gary Reichard, Constance Reinhardt, Daniel Rineer, Sandra Scott, and Susan Weiner.

First honor roll pupils of the 10th grade include Shirley Arimoto, (Continued on Page 8)

Robert S. Gallaher Elementary School To Open Next Monday For First Classes

Wilmer E. Shue, superintendent of the Newark special school district, announced today that the Robert S. Gallaher Elementary School will open next Monday.

Opening of the new school on Brownleaf near Harmony Road, has been delayed because of lack of road and curb work to be provided by the developer of the adjacent housing development.

The 24-classroom building with a separate cafeteria and separate gymnasium was constructed on a 12-acre site by Ernest DiSabatino and Sons, with design and engineering services provided by E. William Martin and Associates.

Of masonry construction, the building is planned to serve the portion of the school district south of Ogletown, including Ogletown, Birchwood, Hillside Heights, Tanglewood and Pilgrim Gardens.

The 10 classroom units of children temporarily assigned at the Medill and Christiana schools, were transported from those schools after lunch yesterday, and excused from the Gallaher School that afternoon.

Shue designated Wednesday as "M" day for moving when each child will carry instructional, reference and text material to the Gallaher School from the school attended since the beginning of this school year.

Beginning Monday morning, transportation by the State Department of Public Instruction will be provided for children attending the Gallaher School except those living in Hillside Heights, Tanglewood and Pilgrim Gardens.

The transportation schedule for the other areas is listed as follows:

David B. Cole Wins TV In Hall Prize Drawing

David B. Cole, 111 Tyre Avenue, won the 17-in. portable television set in the free prize drawing contest conducted last Saturday at Hall's TV Center, 182 East Main Street.

Roy Pleasanton, business associate of Roy Hall at the TV Center, had the pleasant assignment of announcing the prize-winner's good fortune.

"How would you like to give Andrea (the Cole's young daughter) a portable television set for Christmas?" Mr. Pleasanton asked Mrs. Cole, who responded "we would if we could." And they have.

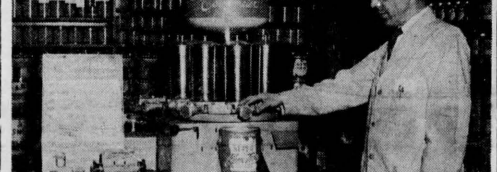
Phoenix String Quartet Plans Tuesday Concert

The Phoenix String Quartet, a chamber music ensemble, will present the third Artists Series concert of the 1959-60 season at the University of Delaware next Tuesday at 8:15 p.m. in Mitchell Hall.

It was in 1952 that David Sackson, soloist, conductor and chamber music player, formed the Phoenix Quartet. Other members are Fred Manzella, violin; Ralph Hersh, viola; and Ray Schweitzer, cello.

In their concert at the University of Delaware, the Phoenix Quartet will be joined by the young American clarinetist Herbert Tichman for the performance of the Mozart and Brahms clarinet quintets.

Automation In Paint Color Mixing



Don Bennett, of Newark Farm & Home Supply, demonstrates the new Kem Colorometer at 123 East Main Street—automation in paint color mixing. Selection may be made from color samples displayed beside the machine, and the operator follows a prescribed formula to create the desired color.

William R. Watt Wins U. S. Patent For New Process

Local Inventor Develops Improved Manufacturing Process With Cellulose

William R. Watt of Newark was the recipient on Oct. 27, 1959 of U. S. Patent 2,910,466, entitled "Process For Producing Cellulose Thioethers."

The cellulose products known as "cellulose thioethers" are of interest because they may be spun into filaments which show resistance to decomposition by acids and water and will accept wool-type dyes.

Although the preparation of cellulose thioethers has been the subject of numerous patents, none of the latter according to Mr. Watt, has found commercial application, because the long and complicated procedures which they have involved have rendered them uneconomical and not readily adaptable to commercial exploitation.

One recently developed method overcomes the difficulties just mentioned in that it produces colorless cellulose thioethers and eliminates the use of uneconomical reagents. However, it is complicated in that it involves a relatively large number of treatments.

To cope with this problem, Mr. Watt has developed a method of producing cellulose thioethers in shorter time and at less expense than heretofore, while at the same time, the resulting product does not have disadvantages of those produced by prior methods.

The viscose, normally used in the manufacture of rayon, is the starting material of the process, thereby eliminating the need for developing new techniques for the production and handling of a special viscose.

The principal chemical reaction of the process may be carried out in four hours as compared with 24 to 72 hours of prior methods, and certain filtration and washing steps heretofore required, may be eliminated. Furthermore, the product of the invention is white as compared to the pale yellow, or gray to brown colors that result from prior methods.

In his patent specifications, Watt describes in detail materials used in preparing the cellulose thioethers of his invention, and cites examples which show effective and satisfactory results achieved.

This patent has been assigned to American Viscose Corporation.

Fibre Firm Joins Program Offered To Combat Cancer

National Contributes 500 Man Hours As Physicians Visit At Newark Plant

Some 1,000 employees at five locations of National Vulcanized Fibre Company, participated in a half-hour program last week sponsored by the New Castle County unit of the American Cancer Society.

In addition to the 500 man-hours contributed by the company, eight doctors gave 9 1/2 hours to the program.

The sessions were opened by the plant manager; and a 12-minute picture, "Man Alive," dealt with the psychology of fear related to cancer. It emphasizes the importance of periodic checkups.

A physician talked for five minutes on an annual checkup, early detection, State Board of Health detection centers for women, and explained that a list of doctors who give cancer examinations is available from the cancer society.

The program was arranged by J. Edward Kane of the firm's industrial relations department, and the local society.

Doctors Charles A. R. Skovron, Oscar N. Stern, and Joseph Arminio were at Newark.

The goal announced by the society, is to help save lives by bringing men, women, and children to their physicians at a time when cancer is most curable, and to give hope to the many who hide symptoms out of fear.

Aetna Fund Drive Total Of \$18,052.37 Reported

Treasurer Wallace Butterworth announced yesterday that a total of \$18,052.37 has been contributed to the 1960 fund campaign of the Aetna Hose, Hook and Ladder Company.

President John List expressed appreciation for public support of the Aetna campaign, and said that the goal of \$18,500 for annual maintenance and operation of Newark's volunteer fire department was expected to be reached this month.

Automation In Paint Color Mixing



Don Bennett, of Newark Farm & Home Supply, demonstrates the new Kem Colorometer at 123 East Main Street—automation in paint color mixing. Selection may be made from color samples displayed beside the machine, and the operator follows a prescribed formula to create the desired color.

Council Approves Pay Raises For Newark's Police Officials

Increases Retroactive To July 1, 1959 To Be Paid Five Police Officers; Finance Dept. Employees Fail To Obtain Retroactive Pay For Increased Work Week

Salary raises for five members of the Newark police department—the chief, the captain, and three sergeants—retroactive to July 1, 1959, were approved by Newark City Council at the regularly scheduled meeting last Tuesday night, but a seven per cent salary increase for employees of the municipal finance department was authorized to become effective Nov. 10, 1959, the date the governing ordinance was passed, rather than to be retroactive to Nov. 1, 1958, when the work week for official personnel was increased from 37 1/2 to 40 hours.

Retroactive pay was estimated at \$1,200.

"That's the same as giving the finance department employees a cut in salary," Wilson said in opposition, "while others received raises." He favored retroactive pay to Nov. 1, 1958. And as council's lone proponent for the measure, was overruled.

Voting Deletions
Election Board Chairman Harold Grant reported that the registration books had been audited, disclosing a total of 194 non-voters' names to be removed from the lists—21 in the eastern district; 84 in the middle; and 89 in the western district.

Those whose names are to be removed from the voting lists are to be notified by registered mail at least 10 days before the first registration day preceding next April's municipal election—at 34 cents per person, Grant reported.

"Mrs. Josephine Lattomus volunteered and personally notified each person before the last registration period," Grant said, "to save the city money. But she will not do it this year."

Notification by certified mail was authorized by council.

Assessment
Former Councilman Albert Priestley objected to recent city assessments of \$1,000 each upon two residents of Winslow Road for street improvements, citing an alleged error in a map prepared from a council survey in 1956 of all city streets in existence and to be exempt from assessment for future paving. An ordinance passed Aug. 17, 1956, included this map in the change in city policy for street responsibility.

"Winslow Road was not included on the map through some error," Priestley maintained, and City Manager Francis Neide added: "I think it was the intent of council to assume responsibility for any streets upon which people were living at that time."

City Secretary Charles Long is to search the records for clarification.

Concerning city request for federal aid in improved housing, Neide reported that he had prepared a letter requesting 100 units for Newark residential rehabilitation, to be sent to the HHA office in Philadelphia over the mayor's signature.

A cash balance of \$203,107.90 for the City of Newark was reported by Long as of Nov. 24; Finance Committee Chairman Vernon Steele announced that the committee was "gratified with work being accomplished in the accounting department," and City Solicitor John Sinclair reported that an amendment to the zoning ordinance governing further classification of business districts would be presented at the next meeting of council.

Harry M. Dexter Retires At C-D-F As Sales Director

Director of sales for Continental Diamond Fibre Corporation, Harry M. Dexter retired yesterday and was honored by his associates at a banquet Tuesday night at the Newark Country Club.

A graduate of Northwestern University and an air force officer in World War I, Harry Dexter was employed by Continental on Jan. 1, 1927. After serving as asst. district sales manager in Chicago, and district sales manager in Cleveland, he was transferred to the Newark plant in 1947 as general sales manager, and in 1956 was promoted to sales director.

Awarded the first certificate in the Royal Order of Gold Ant campaign, he was presented with gifts from his associates at last Tuesday's retirement banquet.

Mr. Dexter, who resides at Corner Ketch, has two children—Judy, a receptionist at the Newark plant, and Harold, a C-D-F sales trainee.

Mrs. Collins Wins Prizes For Poetry In National Tests

Mrs. Samuel A. Collins of 203 Capitol Trail, Newark, was awarded first prize for her poem "The Feast," in a national

Mill Creek Hundred News

Sara Pennington Evans, Correspondent
Phone CE 9-7798

The congregation of Limestone Presbyterian Church will hold first services in the new church next Sunday morning at 11 o'clock. Organized Dec. 2, 1956, members of this church have been meeting regularly in Harmony Grange Hall.

The new edifice has been erected on land along Limestone Road adjacent to the hall. From a very few members, the congregation has grown to a total of 170. The new building is of brick construction. This is the first church of this denomination to be erected in Mill Creek Hundred in over 250 years. White Clay Creek Presbyterian

Church on Kirkwood Highway was built in 1721 and Red Clay Creek Presbyterian Church, on Mill Creek and McKennans Church Road, in 1722.

Elders, deacons, and trustees were elected at a recent congregational meeting. They are: Mrs. William Simmons, Rufus Slaughter for three years; W. F. Beveridge, two years; Joseph L. Clements, one year, elders; George F. Messersmith, elder-trustee, three years; J. Gale Wendle, Jr., trustee, three years; James B. Stillman, William L. Sayre, and Joseph J. Welker, Jr., deacons for three years.

A budget of \$18,500 was approved. A film "The Broken Mask" was shown for the teen-age group last Sunday at the Craig home.

Starting Dec. 10, the men will teach woodwork at the Ferris Industrial School. There will be an orientation meeting on Dec. 3.

Mrs. Warner Naudain of Limestone Road, State CAR senior chaplain and Mrs. Paul R. Leach of Riblett Lane, senior president for the Mill Creek Hundred Society, CAR—both members of the Capt. William McKennan Chapter, DAR—attended the state CAR board meeting and luncheon last Thursday at Dover.

Janet Pierson of White Oak 4-H Club; and Sandy and Frances Craig of Union 4-H Club are the three local girls leaving Saturday for National 4-H Congress in Chicago. They will be away a week. This is Janet's second trip to Congress.

Harmony Grange went on record approving an increase in income tax rather than in real estate tax to help the state budget. This resolution will be sent to Delaware State Grange sessions opening Dec. 1 at Pender, N.C.

Thirty stuffed animal toys will go to the State Grange for distribution.

Thanksgiving Day Highway Hazards Menace Travelers

Thanksgiving Day weekend will be marked by the greatest highway travel upsurge since last Labor Day weekend, the Maryland Traffic Safety Commission predicted today.

"By auto, bus, train, and plane, thousands of citizens will be drawn by the magnetic power of this holiday to get 'back home' with relatives and friends who mean the most in their lives."

"No one figures he will become one of the holiday weekend traffic fatalities," the safety commission warned. "Somehow, accidents—especially accidents today arise out of—always are events that occur to other people."

The commission pointed out that many cars on the road this weekend will be carrying full passenger loads. Family automobiles will be carrying father, mother and the children—bound for a visit with grandparents. College students will be sharing rides back to the home town, many of them for the first time since they enrolled in school back in September.

A good proportion of fatalities in our traffic accidents today arise out of one-car tragedies in which victims are thrown from vehicles out of control. Seat belts are being used increasingly by organizations operating fleets of cars, because their worth has been proved in preventing or minimizing injury in serious accidents.

Last year on Thanksgiving Day, three people were killed on Maryland's highways due to traffic accidents and a total of five persons

to children's hospitals. The local home economics committee has had charge of this project. Three members—George Parris, Sandra Naudain, and Doris Jarmon—have enrolled in the state price and princess contest. Members may obtain their tickets for state banquet on Dec. 2 from Mrs. Raymond Lamberson.

The grange voted a gift of money to their newly wedded members, W. Steel and Elizabeth Peach Atwell.

A Thanksgiving program was given as follows: "Thanksgiving, 1959," by Mrs. Norman Dempsey; an article on the observance of Thanksgiving by Mrs. Frank Cooper, lecturer; poem, by Mrs. Walter Gregg; piano solos by Doris Jarmon; original paper on theaters, stores, and barbers in Wilmington in the 90's by Frank Cooper; and games by Mrs. Robert B. Walker, Jr.

The next meeting on Dec. 7 will be devoted to a picture exhibit of members at the age of one to six, and Dec. 21 will feature the Christmas program.

Harmony Grangers, friends, and neighbors of Mr. and Mrs. W. Steel Atwell gave this newly wedded couple an old fashioned serenade last Thursday evening at their home, Meadowdale Farm, on Paper Mill Road.

Red Clay Creek Presbyterian Church

New officers elected by the Women's Fellowship include Mrs. Frank O'Dell, president; Mrs. David Dewey, vice-president; Mrs. Peter Edwards, secretary; Mrs. William Zeigler, treasurer. The annual Christmas party and exchange of gifts will be held Dec. 9 at the home of Mrs. Stanley McKelvey in Brookland Terrace with Mrs. Charles McVaugh as co-hostess.

Dr. Hendrick F. Moller and his wife spoke to the women of this church last Thursday. The Dr. Mollers have been interning at the Emily P. Bissell Sanatorium. They leave for the United States at the end of December to return to South Africa.

Members brought gifts of talcum powder for patients at the Delaware State Hospital, and thank offering envelopes were returned.

The Waverly Club, meeting last Wednesday with Mrs. Edward Naudain on Paper Mill Road, heard the Rev. James De Raddo, pastor of the Mary A. Simpson Methodist Church in Philadelphia, tell of his trip to the Orient. He had a Fulbright scholarship in 1957 to study in the Orient. He discussed standards of living and religions, and he praised the YMCA work in Jerusalem.

Mrs. Ernest Lomax sang "A Prayer for Thanksgiving."

The members will bring gifts for men patients at the Veterans' Hospital to the Dec. 9 meeting at the home of Mrs. Henry C. Mitchell, Woodside Farms, with Mrs. Lawrence Parrish, Jr., hostess.

The Wilmadus Home Demonstration Club planned its yearly Christmas party and arranged for its January session last Wednesday at the home of Mrs. Laurence Ulmer.

Members will hold the Christmas party Dec. 16 at noon with a luncheon served in the Atterbury Post Home in Wilmington, recreation and gift exchange.

The club realized \$21.35 from its bake and bazaar. A donation of five

Calvary Baptist Women Plan Dec. 4 Prayer Day

Baptist women on six continents will meet to pray on Dec. 4, and Calvary Baptist Church will observe this day of prayer with a program at 10 a.m. The theme will be "Open My Eyes."

The following are participating in the local program: Eugenia Atkins, Mimi Sergi, Jane Mahaffey, Doris Bunstead, Shirley Bailey, Doris Nickels, Eva Redd, Marge Kowal, Lillian Horner, Meme Cook, and Eleanor Todd. Ushers will be Mildred Polcastro and Claudine Wilson, and Dean Clay and Eunice Clark will be in charge of the nursery.

All women are invited to join in this day of prayer.

Women were killed over the Thanksgiving Day weekend.

To date, 21 more people have been killed in Maryland due to traffic accidents than for the same period last year.

The State Safety Commission warned all pedestrians and motorists to be prepared for any change in weather—the worst is yet to come—walk and drive with caution and care.

ADVERTISING FOR BIDS Sealed proposals will be received by the State Highway Department of the State of Delaware at the office of the Chief Engineer, (Room 202) in the Highway Administration Building, in Dover, Delaware, until 2:00 P.M. EST, December 2, 1959, and thereafter shall be publicly opened for contracts involving the following approximate quantities:

CONTRACT NO. 1638
Federal Aid Project No. S-214(1)
NEW CASTLE COUNTY
2.93 Miles

8" Reinforced Concrete Pavement on Select Borrow Base, 40' width, and one Steel and Concrete Structure

92,000 C.Y. Excavation
125 C.Y. Removal of Existing Masonry
450 C.Y. Excavation for Structures
1,000 C.Y. Excavation for Roadway
32,000 C.Y. Select Borrow
3,000 Tons Waterbound Macadam Base Course
2,250 Tons Hot Mix, Hot Laid Asphalt Concrete Pavement
700 Gals. R. C. 1 Asphalt
700 Gals. R. C. 3 Asphalt
30 Tons Crushed Stone
15,000 C.Y. 8" Cement Concrete Pavement
575 C.Y. Portland Cement Concrete
450 S.Y. Superficial Waterproofing
94,000 Lbs. Bar Reinforcement
6,400 Lbs. Wire Mesh Reinforcement
1,500 L.F. 15" R.C. Pipe
2,700 L.F. 15" R.C. Pipe
1,000 L.F. 18" R.C. Pipe
1,000 L.F. 24" R.C. Pipe
750 L.F. 30" R.C. Pipe
1,150 L.F. 36" R.C. Pipe
150 L.F. 15" A.C.C.M. Pipe, 16 Gage
150 L.F. 15" A.C.C.M. Pipe, 16 Gage
60 L.F. 30" A.C.C.M. Pipe, 16 Gage
60 L.F. 30" A.C.C.M. Pipe, 16 Gage
2 Ea. 24" A.C.C.M. Pipe Elbows, 30" 16 Gage
2 Ea. 30" A.C.C.M. Pipe Elbows, 30" 14 Gage
200 L.F. 6" V.C. Pipe
200 L.F. 8" V.C. Pipe
200 L.F. 6" Perf. C. M. Pipe Under-drain
1,070 L.F. Cast in Place Concrete
120 L.F. Steel Shell Test Piles
600 S.Y. 8" Concrete Gutter
120 S.Y. 8" Concrete Gutter
L.F. Portland Cement Concrete
32,800 L.F. Int. Port. Cem. Conc. Curb & Gutter, Type 2
580 L.F. Port. Cem. Conc. Parkway Curb, Type 2
3,700 S.F. 4" Port. Cem. Conc. Sidewalk
5,000 S.F. 6" Port. Cem. Conc. Sidewalk
1 Ea. Type "A" Catch Basin
6 Ea. Type "B" Catch Basins
3 Type "PW-BD-1" Catch Basins
1 Ea. Type "PW-BD-2" Catch Basin
1 Ea. Type "PW-BD-4" Catch Basin
35 Type "SD-1" Catch Basins
45 Ea. Type "SD-2A" Catch Basins
1 Ea. Type "SD-2B" Catch Basin
S.Y. Removal of Existing Pavement
L.S. Removal of Existing Structures
3,150 Gals. R. C. 1 Asphalt Tack Coat
222 L.F. Aluminum Bridge Railing
950 S.Y. Slope Protection
L.S. Permanent Barricade
8 Ea. Standard Manhole

dollars was voted to Mrs. Harvey Dickey for beautician supplies for the Delaware State Hospital.

Katherine Jones spoke on "Care of Fabrics," showing the affects of detergents and bleaches on synthetic fabrics.

The HockessinJPBA had Kenneth Saunders of General Motors speak on "Safety and Home Fire Prevention" at the November meeting at the Lamborn Library.

Mrs. John V. Leonard, safety chairman, had charge. Mrs. Kenneth Read, wife of the pastor of Limestone Presbyterian Church, contralto soloist, and Mrs. Jesse Harmon, pianist, rendered musical selections.

James L. Derickson, Jr., underwent surgery last Friday at Wilmington General Hospital.

Union 4-H Club will meet Saturday evening at the home of Carol and Charlotte Harris, Penn Manor Farm, when plans will be made for annual parent night program and meeting in December.

Harmony Grange's installation team comprising Past Master Joseph Mitchell, Mrs. Mitchell, Mrs. Calvin Ball, Mrs. Norman Dempsey, and

60 L.F. 2" Galv. Conduit under Old Pavement
2,240 L.F. 2" Galv. Conduit under New Pavement
100 L.F. 4" Bit. Fiber Pipe under Old Pavement
485 L.F. 4" Bit. Fiber Pipe under New Pavement
18 Ea. Conduit Junction Well
14 Ea. Special Conduit Junction Well
2 Ea. Aluminum Pole Base
6 Ea. 6" Traffic Signal Detector Encasement
200 Tons Select Borrow (TRM)
200 Tons Hot Mix Asphalt. Conc. (TRM)
100 Tons Cold Laid Bit. Conc. (TRM)
1,000 Tons Quarry Waste (TRM)

CONTRACT NO. 1769
MINQUADALE — (EAST)
NEW CASTLE COUNTY
2.93 Miles

2" Hot Mix Asphalt Concrete on Soil Cement Base Course

17,500 C.Y. Clearing and Grubbing
30 C.Y. Rock Excavation for Roadway
50 C.Y. Rock Excavation for Structures
500 C.Y. Excavation for Structures
300 C.Y. Excavation for Roadway
1,150 Tons Waterbound Macadam
5,500 Tons Hot Mix, Hot Laid Asphalt Concrete Pavement
430 Tons Cold Laid Bituminous Concrete
250 C.Y. Cement Concrete Masonry
8,750 Lbs. Bar Reinforcement
3,600 L.F. 15" R.C. Pipe
1,150 L.F. 15" R.C. Pipe
1,150 L.F. 18" R.C. Pipe
1,150 L.F. 24" R.C. Pipe
1,150 L.F. 30" R.C. Pipe
1,150 L.F. 36" R.C. Pipe
150 L.F. 15" A.C.C.M. Pipe, 16 Gage
150 L.F. 15" A.C.C.M. Pipe, 16 Gage
60 L.F. 30" A.C.C.M. Pipe, 16 Gage
60 L.F. 30" A.C.C.M. Pipe, 16 Gage
2 Ea. 24" A.C.C.M. Pipe Elbows, 30" 16 Gage
2 Ea. 30" A.C.C.M. Pipe Elbows, 30" 14 Gage
200 L.F. 6" V.C. Pipe
200 L.F. 8" V.C. Pipe
200 L.F. 6" Perf. C. M. Pipe Under-drain
1,070 L.F. Cast in Place Concrete
120 L.F. Steel Shell Test Piles
600 S.Y. 8" Concrete Gutter
120 S.Y. 8" Concrete Gutter
L.F. Portland Cement Concrete
32,800 L.F. Int. Port. Cem. Conc. Curb & Gutter, Type 2
580 L.F. Port. Cem. Conc. Parkway Curb, Type 2
3,700 S.F. 4" Port. Cem. Conc. Sidewalk
5,000 S.F. 6" Port. Cem. Conc. Sidewalk
1 Ea. Type "A" Catch Basin
6 Ea. Type "B" Catch Basins
3 Type "PW-BD-1" Catch Basins
1 Ea. Type "PW-BD-2" Catch Basin
1 Ea. Type "PW-BD-4" Catch Basin
35 Type "SD-1" Catch Basins
45 Ea. Type "SD-2A" Catch Basins
1 Ea. Type "SD-2B" Catch Basin
S.Y. Removal of Existing Pavement
L.S. Removal of Existing Structures
3,150 Gals. R. C. 1 Asphalt Tack Coat
222 L.F. Aluminum Bridge Railing
950 S.Y. Slope Protection
L.S. Permanent Barricade
8 Ea. Standard Manhole

CONTRACT NO. 1769
MINQUADALE — (EAST)
NEW CASTLE COUNTY
2.93 Miles

2" Hot Mix Asphalt Concrete on Soil Cement Base Course

17,500 C.Y. Clearing and Grubbing
30 C.Y. Rock Excavation for Roadway
50 C.Y. Rock Excavation for Structures
500 C.Y. Excavation for Structures
300 C.Y. Excavation for Roadway
1,150 Tons Waterbound Macadam
5,500 Tons Hot Mix, Hot Laid Asphalt Concrete Pavement
430 Tons Cold Laid Bituminous Concrete
250 C.Y. Cement Concrete Masonry
8,750 Lbs. Bar Reinforcement
3,600 L.F. 15" R.C. Pipe
1,150 L.F. 15" R.C. Pipe
1,150 L.F. 18" R.C. Pipe
1,150 L.F. 24" R.C. Pipe
1,150 L.F. 30" R.C. Pipe
1,150 L.F. 36" R.C. Pipe
150 L.F. 15" A.C.C.M. Pipe, 16 Gage
150 L.F. 15" A.C.C.M. Pipe, 16 Gage
60 L.F. 30" A.C.C.M. Pipe, 16 Gage
60 L.F. 30" A.C.C.M. Pipe, 16 Gage
2 Ea. 24" A.C.C.M. Pipe Elbows, 30" 16 Gage
2 Ea. 30" A.C.C.M. Pipe Elbows, 30" 14 Gage
200 L.F. 6" V.C. Pipe
200 L.F. 8" V.C. Pipe
200 L.F. 6" Perf. C. M. Pipe Under-drain
1,070 L.F. Cast in Place Concrete
120 L.F. Steel Shell Test Piles
600 S.Y. 8" Concrete Gutter
120 S.Y. 8" Concrete Gutter
L.F. Portland Cement Concrete
32,800 L.F. Int. Port. Cem. Conc. Curb & Gutter, Type 2
580 L.F. Port. Cem. Conc. Parkway Curb, Type 2
3,700 S.F. 4" Port. Cem. Conc. Sidewalk
5,000 S.F. 6" Port. Cem. Conc. Sidewalk
1 Ea. Type "A" Catch Basin
6 Ea. Type "B" Catch Basins
3 Type "PW-BD-1" Catch Basins
1 Ea. Type "PW-BD-2" Catch Basin
1 Ea. Type "PW-BD-4" Catch Basin
35 Type "SD-1" Catch Basins
45 Ea. Type "SD-2A" Catch Basins
1 Ea. Type "SD-2B" Catch Basin
S.Y. Removal of Existing Pavement
L.S. Removal of Existing Structures
3,150 Gals. R. C. 1 Asphalt Tack Coat
222 L.F. Aluminum Bridge Railing
950 S.Y. Slope Protection
L.S. Permanent Barricade
8 Ea. Standard Manhole

CONTRACT NO. 1769
MINQUADALE — (EAST)
NEW CASTLE COUNTY
2.93 Miles

2" Hot Mix Asphalt Concrete on Soil Cement Base Course

17,500 C.Y. Clearing and Grubbing
30 C.Y. Rock Excavation for Roadway
50 C.Y. Rock Excavation for Structures
500 C.Y. Excavation for Structures
300 C.Y. Excavation for Roadway
1,150 Tons Waterbound Macadam
5,500 Tons Hot Mix, Hot Laid Asphalt Concrete Pavement
430 Tons Cold Laid Bituminous Concrete
250 C.Y. Cement Concrete Masonry
8,750 Lbs. Bar Reinforcement
3,600 L.F. 15" R.C. Pipe
1,150 L.F. 15" R.C. Pipe
1,150 L.F. 18" R.C. Pipe
1,150 L.F. 24" R.C. Pipe
1,150 L.F. 30" R.C. Pipe
1,150 L.F. 36" R.C. Pipe
150 L.F. 15" A.C.C.M. Pipe, 16 Gage
150 L.F. 15" A.C.C.M. Pipe, 16 Gage
60 L.F. 30" A.C.C.M. Pipe, 16 Gage
60 L.F. 30" A.C.C.M. Pipe, 16 Gage
2 Ea. 24" A.C.C.M. Pipe Elbows, 30" 16 Gage
2 Ea. 30" A.C.C.M. Pipe Elbows, 30" 14 Gage
200 L.F. 6" V.C. Pipe
200 L.F. 8" V.C. Pipe
200 L.F. 6" Perf. C. M. Pipe Under-drain
1,070 L.F. Cast in Place Concrete
120 L.F. Steel Shell Test Piles
600 S.Y. 8" Concrete Gutter
120 S.Y. 8" Concrete Gutter
L.F. Portland Cement Concrete
32,800 L.F. Int. Port. Cem. Conc. Curb & Gutter, Type 2
580 L.F. Port. Cem. Conc. Parkway Curb, Type 2
3,700 S.F. 4" Port. Cem. Conc. Sidewalk
5,000 S.F. 6" Port. Cem. Conc. Sidewalk
1 Ea. Type "A" Catch Basin
6 Ea. Type "B" Catch Basins
3 Type "PW-BD-1" Catch Basins
1 Ea. Type "PW-BD-2" Catch Basin
1 Ea. Type "PW-BD-4" Catch Basin
35 Type "SD-1" Catch Basins
45 Ea. Type "SD-2A" Catch Basins
1 Ea. Type "SD-2B" Catch Basin
S.Y. Removal of Existing Pavement
L.S. Removal of Existing Structures
3,150 Gals. R. C. 1 Asphalt Tack Coat
222 L.F. Aluminum Bridge Railing
950 S.Y. Slope Protection
L.S. Permanent Barricade
8 Ea. Standard Manhole

CONTRACT NO. 1769
MINQUADALE — (EAST)
NEW CASTLE COUNTY
2.93 Miles

2" Hot Mix Asphalt Concrete on Soil Cement Base Course

17,500 C.Y. Clearing and Grubbing
30 C.Y. Rock Excavation for Roadway
50 C.Y. Rock Excavation for Structures
500 C.Y. Excavation for Structures
300 C.Y. Excavation for Roadway
1,150 Tons Waterbound Macadam
5,500 Tons Hot Mix, Hot Laid Asphalt Concrete Pavement
430 Tons Cold Laid Bituminous Concrete
250 C.Y. Cement Concrete Masonry
8,750 Lbs. Bar Reinforcement
3,600 L.F. 15" R.C. Pipe
1,150 L.F. 15" R.C. Pipe
1,150 L.F. 18" R.C. Pipe
1,150 L.F. 24" R.C. Pipe
1,150 L.F. 30" R.C. Pipe
1,150 L.F. 36" R.C. Pipe
150 L.F. 15" A.C.C.M. Pipe, 16 Gage
150 L.F. 15" A.C.C.M. Pipe, 16 Gage
60 L.F. 30" A.C.C.M. Pipe, 16 Gage
60 L.F. 30" A.C.C.M. Pipe, 16 Gage
2 Ea. 24" A.C.C.M. Pipe Elbows, 30" 16 Gage
2 Ea. 30" A.C.C.M. Pipe Elbows, 30" 14 Gage
200 L.F. 6" V.C. Pipe
200 L.F. 8" V.C. Pipe
200 L.F. 6" Perf. C. M. Pipe Under-drain
1,070 L.F. Cast in Place Concrete
120 L.F. Steel Shell Test Piles
600 S.Y. 8" Concrete Gutter
120 S.Y. 8" Concrete Gutter
L.F. Portland Cement Concrete
32,800 L.F. Int. Port. Cem. Conc. Curb & Gutter, Type 2
580 L.F. Port. Cem. Conc. Parkway Curb, Type 2
3,700 S.F. 4" Port. Cem. Conc. Sidewalk
5,000 S.F. 6" Port. Cem. Conc. Sidewalk
1 Ea. Type "A" Catch Basin
6 Ea. Type "B" Catch Basins
3 Type "PW-BD-1" Catch Basins
1 Ea. Type "PW-BD-2" Catch Basin
1 Ea. Type "PW-BD-4" Catch Basin
35 Type "SD-1" Catch Basins
45 Ea. Type "SD-2A" Catch Basins
1 Ea. Type "SD-2B" Catch Basin
S.Y. Removal of Existing Pavement
L.S. Removal of Existing Structures
3,150 Gals. R. C. 1 Asphalt Tack Coat
222 L.F. Aluminum Bridge Railing
950 S.Y. Slope Protection
L.S. Permanent Barricade
8 Ea. Standard Manhole

CONTRACT NO. 1769
MINQUADALE — (EAST)
NEW CASTLE COUNTY
2.93 Miles

2" Hot Mix Asphalt Concrete on Soil Cement Base Course

17,500 C.Y. Clearing and Grubbing
30 C.Y. Rock Excavation for Roadway
50 C.Y. Rock Excavation for Structures
500 C.Y. Excavation for Structures
300 C.Y. Excavation for Roadway
1,150 Tons Waterbound Macadam
5,500 Tons Hot Mix, Hot Laid Asphalt Concrete Pavement
430 Tons Cold Laid Bituminous Concrete
250 C.Y. Cement Concrete Masonry
8,750 Lbs. Bar Reinforcement
3,600 L.F. 15" R.C. Pipe
1,150 L.F. 15" R.C. Pipe
1,150 L.F. 18" R.C. Pipe
1,150 L.F. 24" R.C. Pipe
1,150 L.F. 30" R.C. Pipe
1,150 L.F. 36" R.C. Pipe
150 L.F. 15" A.C.C.M. Pipe, 16 Gage
150 L.F. 15" A.C.C.M. Pipe, 16 Gage
60 L.F. 30" A.C.C.M. Pipe, 16 Gage
60 L.F. 30" A.C.C.M. Pipe, 16 Gage
2 Ea. 24" A.C.C.M. Pipe Elbows, 30" 16 Gage
2 Ea. 30" A.C.C.M. Pipe Elbows, 30" 14 Gage
200 L.F. 6" V.C. Pipe
200 L.F. 8" V.C. Pipe
200 L.F. 6" Perf. C. M. Pipe Under-drain
1,070 L.F. Cast in Place Concrete
120 L.F. Steel Shell Test Piles
600 S.Y. 8" Concrete Gutter
120 S.Y. 8" Concrete Gutter
L.F. Portland Cement Concrete
32,800 L.F. Int. Port. Cem. Conc. Curb & Gutter, Type 2
580 L.F. Port. Cem. Conc. Parkway Curb, Type 2
3,700 S.F. 4" Port. Cem. Conc. Sidewalk
5,000 S.F. 6" Port. Cem. Conc. Sidewalk
1 Ea. Type "A" Catch Basin
6 Ea. Type "B" Catch Basins
3 Type "PW-BD-1" Catch Basins
1 Ea. Type "PW-BD-2" Catch Basin
1 Ea. Type "PW-BD-4" Catch Basin
35 Type "SD-1" Catch Basins
45 Ea. Type "SD-2A" Catch Basins
1 Ea. Type "SD-2B" Catch Basin
S.Y. Removal of Existing Pavement
L.S. Removal of Existing Structures
3,150 Gals. R. C. 1 Asphalt Tack Coat
222 L.F. Aluminum Bridge Railing
950 S.Y. Slope Protection
L.S. Permanent Barricade
8 Ea. Standard Manhole

CONTRACT NO. 1769
MINQUADALE — (EAST)
NEW CASTLE COUNTY
2.93 Miles

2" Hot Mix Asphalt Concrete on Soil Cement Base Course

17,500 C.Y. Clearing and Grubbing
30 C.Y. Rock Excavation for Roadway
50 C.Y. Rock Excavation for Structures
500 C.Y. Excavation for Structures
300 C.Y. Excavation for Roadway
1,150 Tons Waterbound Macadam
5,500 Tons Hot Mix, Hot Laid Asphalt Concrete Pavement
430 Tons Cold Laid Bituminous Concrete
250 C.Y. Cement Concrete Masonry
8,750 Lbs. Bar Reinforcement
3,600 L.F. 15" R.C. Pipe
1,150 L.F. 15" R.C. Pipe
1,150 L.F. 18" R.C. Pipe
1,150 L.F. 24" R.C. Pipe
1,150 L.F. 30" R.C. Pipe
1,150 L.F. 36" R.C. Pipe
150 L.F. 15" A.C.C.M. Pipe, 16 Gage
150 L.F. 15" A.C.C.M. Pipe, 16 Gage
60 L.F. 30" A.C.C.M. Pipe, 16 Gage
60 L.F. 30" A.C.C.M. Pipe, 16 Gage
2 Ea. 24" A.C.C.M. Pipe Elbows, 30" 16 Gage
2 Ea. 30" A.C.C.M. Pipe Elbows, 30" 14 Gage
200 L.F. 6" V.C. Pipe
200 L.F. 8" V.C. Pipe
200 L.F. 6" Perf. C. M. Pipe Under-drain
1,070 L.F. Cast in Place Concrete
120 L.F. Steel Shell Test Piles
600 S.Y. 8" Concrete Gutter
120 S.Y. 8" Concrete Gutter
L.F. Portland Cement Concrete
32,800 L.F. Int. Port. Cem. Conc. Curb & Gutter, Type 2
580 L.F. Port. Cem. Conc. Parkway Curb, Type 2
3,700 S.F. 4" Port. Cem. Conc. Sidewalk
5,000 S.F. 6" Port. Cem. Conc. Sidewalk
1 Ea. Type "A" Catch Basin
6 Ea. Type "B" Catch Basins
3 Type "PW-BD-1" Catch Basins
1 Ea. Type "PW-BD-2" Catch Basin
1 Ea. Type "PW-BD-4" Catch Basin
35 Type "SD-1" Catch Basins
45 Ea. Type "SD-2A" Catch Basins
1 Ea. Type "SD-2B" Catch Basin
S.Y. Removal of Existing Pavement
L.S. Removal of Existing Structures
3,150 Gals. R. C. 1 Asphalt Tack Coat
222 L.F. Aluminum Bridge Railing
950 S.Y. Slope Protection
L.S. Permanent Barricade
8 Ea. Standard Manhole

CONTRACT NO. 1769
MINQUADALE — (EAST)
NEW CASTLE COUNTY
2.93 Miles

2" Hot Mix Asphalt Concrete on Soil Cement Base Course

17,500 C.Y. Clearing and Grubbing
30 C.Y. Rock Excavation for Roadway
50 C.Y. Rock Excavation for Structures
500 C.Y. Excavation for Structures
300 C.Y. Excavation for Roadway
1,150 Tons Waterbound Macadam
5,500 Tons Hot Mix, Hot Laid Asphalt Concrete Pavement
430 Tons Cold Laid Bituminous Concrete
250 C.Y. Cement Concrete Masonry
8,750 Lbs. Bar Reinforcement
3,600 L.F. 15" R.C. Pipe
1,150 L.F. 15" R.C. Pipe
1,150 L.F. 18" R.C. Pipe
1,150 L.F. 24" R.C. Pipe
1,150 L.F. 30" R.C. Pipe
1,150 L.F. 36" R.C. Pipe
150 L.F. 15" A.C.C.M. Pipe, 16 Gage
150 L.F. 15" A.C.C.M. Pipe, 16 Gage
60 L.F. 30" A.C.C.M. Pipe, 16 Gage
60 L.F. 30" A.C.C.M. Pipe, 16 Gage
2 Ea. 24" A.C.C.M. Pipe Elbows, 30" 16 Gage
2 Ea. 30" A.C.C.M. Pipe Elbows, 30" 14 Gage
200 L.F. 6" V.C. Pipe
200 L.F. 8" V.C. Pipe
200 L.F. 6" Perf. C. M. Pipe Under-drain
1,070 L.F. Cast in Place Concrete
120 L.F. Steel Shell Test Piles
600 S.Y. 8" Concrete Gutter
120 S.Y. 8" Concrete Gutter
L.F. Portland Cement Concrete
32,800 L.F. Int. Port. Cem. Conc. Curb & Gutter, Type 2
580 L.F. Port. Cem. Conc. Parkway Curb, Type 2
3,700 S.F. 4" Port. Cem. Conc. Sidewalk
5,000 S.F. 6" Port. Cem. Conc. Sidewalk
1 Ea. Type "A" Catch Basin
6 Ea. Type "B" Catch Basins
3 Type "PW-BD-1" Catch Basins
1 Ea. Type "PW-BD-2" Catch Basin
1 Ea. Type "PW-BD-4" Catch Basin
35 Type "SD-1" Catch Basins
45 Ea. Type "SD-2A" Catch Basins
1 Ea. Type "SD-2B" Catch Basin
S.Y. Removal of Existing Pavement
L.S. Removal of Existing Structures
3,150 Gals. R. C. 1 Asphalt Tack Coat
222 L.F. Aluminum Bridge Railing
950 S.Y. Slope Protection
L.S. Permanent Barricade
8 Ea. Standard Manhole

CONTRACT NO. 1769
MINQUADALE — (EAST)
NEW CASTLE COUNTY
2.93 Miles

2" Hot Mix Asphalt Concrete on Soil Cement Base Course

17,500 C.Y. Clearing and Grubbing
30 C.Y. Rock Excavation for Roadway
50 C.Y. Rock Excavation for Structures
500 C.Y. Excavation for Structures
300 C.Y. Excavation for Roadway
1,150 Tons Waterbound Macadam
5,500 Tons Hot Mix, Hot Laid Asphalt Concrete Pavement
430 Tons Cold Laid Bituminous Concrete
250 C.Y. Cement Concrete Masonry
8,750 Lbs. Bar Reinforcement
3,600 L.F. 15" R.C. Pipe
1,150 L.F. 15" R.C. Pipe
1,150 L.F. 18" R.C. Pipe
1,150 L.F. 24" R.C. Pipe
1,150 L.F. 30" R.C. Pipe
1,150 L.F. 36" R.C. Pipe
150 L.F. 15" A.C.C.M. Pipe, 16 Gage
150 L.F. 15" A.C.C.M. Pipe, 16 Gage
60 L.F. 30" A.C.C.M. Pipe, 16 Gage
60 L.F. 30" A.C.C.M. Pipe, 16 Gage
2 Ea. 24" A.C.C.M. Pipe Elbows, 30" 16 Gage
2 Ea. 30" A.C.C.M. Pipe Elbows, 30" 14 Gage
200 L.F. 6" V.C. Pipe
200 L.F. 8" V.C. Pipe
200 L.F. 6" Perf. C. M. Pipe Under-drain
1,070 L.F. Cast in Place Concrete
120 L.F. Steel Shell Test Piles
600 S.Y. 8" Concrete Gutter
120 S.Y. 8" Concrete Gutter
L.F. Portland Cement Concrete
32,800 L.F. Int. Port.

News of Bear

Mrs. J. Leslie Ford, Correspondent
Phone EA 8-6484George T. Jamieson, pastor
of Clay Creek Presbyterian
Church, at old St. James Episcopal
Church, and the Rev. H. D. Hughes, host pastor.

CALL EN 8-9811

RADIATION
BATTERY
LUBRICATION
HEATER
TUNE-UP
BRAKESFOR
AUTO
SERVICEWHITE
PROF.

UNIVERSITY ESSO SERVICE

Elkton & Beverly Roads

NEW YORK LIFE
AGENT

Carroll W. Mumford, Jr.



NEW YORK LIFE

Insurance Company

Life Insurance, Group Insurance

Accident & Sickness Insurance

Employee Pension Plans

5 Courtney St.

PHONE EN 8-5482

CALL EN 8-8748

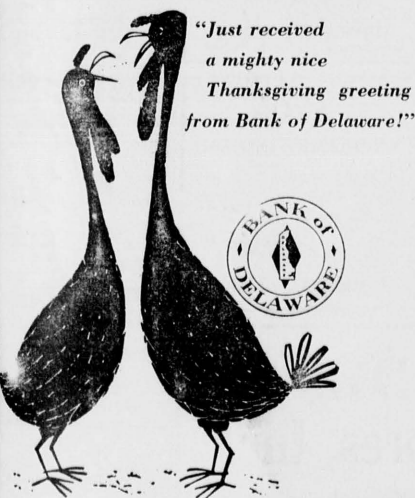
We have a varied list
of properties in all
price ranges. Let us
help YOU with your
financing arrange-
ments.

-CALL-

HANBY, PATTERSON
& SCHWARTZ

EN 8-8748, ANYTIME

REALTORS' 71 E. Main St.

SPECIAL CHRISTMAS OFFER
WORLD BOOK ENCYCLOPEDIA
Childcraft
Ruth D. Williamson, Dist. Mgr.
PHONE FO 2-1526USED MACHINE CLEARANCE
From \$9.95MANY
MODELS
to
CHOOSE
FROMSINGER SEWING CENTER
Newark Shopping Center"Just received
a mighty nice
Thanksgiving greeting
from Bank of Delaware!"And our Thanksgiving greeting to you
is a sincere wish that this season finds
you with blessings many, troubles
slight, and future prospects rich and
abundant.A Happy Thanksgiving Day to all
our customers and friends!BANK of DELAWARE
NEWARK OFFICE
Newark Shopping Center
12 Offices Throughout Delaware
Greater Wilmington Area
Newark • Odessa • Smyrna • Dover • Seaford • West Seaford
Extra Banking Hours on Fridays
Member F.D.I.C. • Federal Reserve SystemToastmasters Hear
Talk On Hypnosis
By B. W. Mumford"Nine out of 10 people can be
hypnotized," B. W. Mumford, stu-
dent of hypnosis, said the Nov. 12
dinner meeting of the First State
Toastmasters' Club at the Airport
Restaurant. He demonstrated this
point by hypnotizing volunteers
from the audience."People with IQ's of less than
90, or young children, can rarely
be hypnotized because they lack the
necessary power of concentration,"
he said.Darrel O. Neidigh explained that
"Happiness Is Contagious, Philo-
sophical and Relative" and was
voted the best speaker of the eve-
ning.Others who appeared on the pro-
gram were Al Bates, who talked ex-
temporaneously about "If I were
Secretary of State," William Haber,
who pointed out the pit-falls in
boat-building; and John Waldron,
who explained that America's di-
vorce rate could be lowered if men
would learn how to talk to their
wives.Toastmaster of the evening was
George Snyder.The Cecil County Hunt Club held
their annual banquet at the Ches-
apeake City Fire Hall last Thurs-
day when 200 guests were enter-
tained. J. Leslie Ford, president, in-
troduced Joseph Baldwin of West
Chester as toastmaster.Guests were entertained by group
singing and two solos by Harriet
Johnson, Mrs. Paul Burge had
charge of the music.Field trial prizes were awarded
to John Spence, first; Mrs. Betty
Morris, second; and Ralph Betty,
third.The trophy was presented to Mr.
Spence to have and to hold for one
year.The Ladies Aid of Pencader Pres-
byterian Church met at the home of
Mrs. Ellen Snyder at Red Lion with
Mrs. Wilkins McElwee presiding.
The opening prayer was said by
J. Leslie Ford; devotions were read
by Mrs. Betty Burge, with members
answering roll call by names of
flowers.The December meeting will be
held at the home of Mr. and Mrs.
Paul Burge on Dec. 9. Devotions
will be read by Allen Brown; and
gifts will be exchanged.The Bear Home Demonstration
Club met at the home of Mrs. Wil-
liam Ellis Monday with M. Kath-
erine Jones, County Home Demo-
stration agent, discussing "Care
of Fabrics."Mrs. Joseph Marusek, interna-
tional relations committee chairman,
read a letter from "Care," thanking
the club for their recent donation,
and stating that the club's contribu-
tion had been sent to Poland.Sewing Group II of the club
sewed at the State Hospital on
Tuesday.The club donated money to the
volunteer committee planning to
give cosmetics to women patients
at the State Hospital for Christ-
mas.The club is also making a con-
tribution to Happy House at Bear
for Christmas.Mrs. Roger Wooleyhan, Mrs.
Thomas McGinnis and Mrs. Fred-
erick Morris are in charge of ar-
rangements for a Christmas dinner
party. The recreation and decoration
committee includes Mrs. George
Weaver and Mrs. Thomas Whittin-
ton.Edward T. Butler, 20, and husband
of Mrs. Marjorie Correll Butler,
Sunset Lake Road, has enlisted in
the Air Force for four years as a
jet mechanic.Henry J. Catts, 94, Delaware
farmer for half a century who re-
tired a few years ago, died last
Thursday in Memorial Hospital.Mr. Catts lived with a daughter,
Mrs. Clarence Simon. He also is
survived by another daughter, Mrs.
Carlisle Simon; two sons, Victor
Pembrey and John B. Parkers-
burgh, W. Va., 12 grandchildren,
and 18 great grandchildren.Mr. Catts married Miss Louisa
Barr, the daughter of the late Rob-
ert and Hanna Barr who lived near
Glasgow. She preceded him in
death.He has been a member of the Odd
Fellows for over 45 years.Services were held Saturday in
the Spicer Mullikin Funeral Home
with interment in Chester Bethel
Cemetery.At Newark's ONLY
Complete Wallpaper
and Paint StoreFIRST CHOICE WITH
HOMEOWNERS WHO CARE
Dutch Boy
PAINTS
REG. U.S. PAT. OFF.• VENETIAN BLINDS
• WINDOW SHADES
• TRAVERSE RODS
SHEAFFER'S
77 E. MAIN EN 8-6507
"Paint is a Specialty with
us . . . Not a Sideline"Rifleman Dave Charron
In Exercise In GermanyArmy Pfc Dave R. Charron, son
of Mrs. Della Charlton, Todd
Estates, is participating in a five-
week large-scale field training ex-
ercise in Wildflecken, Germany.
The maneuver, which involves
air, armor, infantry and artillery
units, is designed to test combat
readiness, a major part of the
NATO shield of defense in Europe.
Charron, an automatic rifleman
in Company D of the division's 52d
Infantry, arrived overseas last July.Business Affects
Of Freeway Cited
In Student SurveyA research team of eight Univer-
sity of Delaware students under
the supervision of Dr. Blaine G.
Schmidt, associate professor of eco-
nomics and business administration,
has completed a preliminary survey
of New Castle County areas likely
to be affected by the proposed free-
ways.During the summer the survey
team studied 166,165 real estate sales
transactions in Brandywine, New
Castle, Christiana, White Clay
Creek, and Pencader Hundreds and
also an eight-block strip of prop-
erties within the City of Wilmington.Dr. Schmidt reported that most
of the findings were "about what we
expected," but observed that a high-
er than average sale of properties
in recent years is taking place in
rural areas "in anticipation of the
building of the freeway."Whereas sales activities in well
developed and highly stabilized
neighborhoods in the past few years
averaged a turn-over rate of be-
tween five and eight per cent each
year, it ranged from between 13 and
26 per cent in rural areas where the
land will probably be converted
from agricultural to residential or
commercial use.An especially high sales frequen-
cy of activity by real estate and
commercial buyers was reported in
the area between Newport and
Newark.Dr. Ken McFarland
Featured Speaker
For Safety CouncilDr. Kenneth McFarland, educa-
tional consultant of General Motors
Corporation, was the guest speaker
at the 40th annual meeting of the
Delaware Safety Council last Tues-
day at 8 p.m. at the Playhouse in
Wilmington.Dr. McFarland has a national rep-
utation as an educator and speaker.
In a recent survey conducted by the
U. S. Chamber of Commerce, Dr.
McFarland was rated as America's
No. 1 speaker, Mr. Foster reported.The speaker served as a public
school administrator for 24 years.
He has also had experience as a
business man, farmer, stock raiser,
industrial supervisor and human
relations counselor.The McFarland Trade School in
Coffeyville, Kan., was named in his
honor. He lives on a 140-acre farm
near Topeka.Dr. McFarland was named Ameri-
ca's outstanding salesman for 1957
at the international convention of
the National Sales Executives Club.

ELK THEATRE

THUR., FRI., SAT.
NOV. 26, 27, 28
DOUBLE FEATURE
— Feature No. 1 —
Blue Denimwith
Carol Lynley
Brandon de Wilde
Cinemascope— Feature No. 2 —
Untamed Youthwith
Mamie Van Doren
Lori NelsonNOV. 29, 30; DEC. 1
SUN., MON., TUES.It Started With
A Kisswith
Glenn Ford
Debbie Reynolds
Cinemascope in Color

WED., THUR. DEC. 2, 3

Gigi

with
Leslie Caron
Maurice Chevalier
Color

FRI., SAT. DEC. 4, 5

DOUBLE FEATURE
— Feature No. 1 —
Have Rocket
Will Travelwith
The Three Stooges
Anna Lisa— Feature No. 2 —
The Legend of
Tom Dooleywith
Michael Landon
Jo MorrowDelaware Junior Selected
To Attend NAM CongressJon Parker Heggan, Wilmington,
a junior majoring in political science
at the University of Delaware, has
been selected to attend the National
Association of Manufacturers' 64th
Annual Congress of American In-
dustry.Heggan will represent NAM's
Middle Atlantic Region at the con-
gress in New York's Waldorf As-
toria, December 2-4.Joint announcement of the selec-
tion was made by P. S. du Pont,
III, NAM regional vice-president;
and John E. Houtt, dean of students
at the University of Delaware.

Auctioneering

HAROLD S. HILL
Kemblesville, Pa.
Call Clinton 5-4310

GEORGE E. MOLITOR

Painting
Floor Sanding & Refinishing
Interior — Exterior
PHONE ELKTON 1128-B

Roofing & Siding

Gutter & Spout Work
THORP BROS.111 SILVIEW AVE.
EN 8-3908
Phone WY 4-7166

FREE ESTIMATES

Arnold M. Clark
Presents Lecture
In Sussex SeriesDr. Arnold M. Clark, professor
of biological sciences at the Univer-
sity of Delaware, was the final
speaker in the Sussex Lecture Se-
ries last Monday, at 8 p.m., in St.
Luke's Episcopal Church Parish
House, Seaford.The lecture, entitled "Radiation
and Human Heredity," is the sixth
and last in a series sponsored by
the university extension division
with the support of community or-
ganizations.Before coming to the university
as an instructor in 1946, Dr. Clark
was a research biologist for seven
years, and an instructor at the
Philadelphia College of Pharmacy
and Science.He holds his bachelor's degree
from Penn State University and his
master's and doctor's degrees from
the University of Pennsylvania.More than twenty articles have
been published by Clark since
1943 dealing with the biological
effects of radiation, genetics, oxy-
gen poisoning, and the toxicological
effects of insecticides and resins.

SCHLOSSER

Plumbing & Heating

Guaranteed
Materials
and
Workmanship
Gen. Supplies
and FixturesTrenching & Back-Filling
CALL EN 8-4757

171 E. MAIN ST. NEWARK

Overnight Trip Features
Program For Troop 383Girl Scout Troop 383 stayed over-
night at Country Center Saturday,
Nov. 14, where sixth grade Scouts
worked on requirements for out-
door badges. Their leader, Mrs. H.
L. Melrath, accompanied them on
the trip, assisted by Mrs. Roger
Dobson and Mrs. Max Stuckey,
troop mothers.Scouts in the troop include Vir-
ginia Butters, Tahna Cameron,
Sherry Dobson, Ann Faim, Luana
Gardner, Kathy Gliwa, Bonnie Hee-
gard, Susan Hilton, Frances Huff,
Marilyn Jay, Joyce Koch, Linda
LaSalle, Barbara Malinowski, Su-
san McClendon, Sandy Patovic,
Rebecca Pott, Shelly Stuckey, Bar-
bara West, and Joan Wood."About the only thing people have
trouble affording in our present
economy is the first of the month."
—Pep Mealiffe.

Plastics Chemist

Polymer Chemist or chemical
engineer experienced with ther-
mosetting laminating resins and
reinforcements, for position in
process and new product develop-
ment. Will have contact with
our sales representatives and
customers.Will be working in a closely
knit technical group with full
responsibility for assigned pro-
jects.Our representative will ar-
range to interview you in your
area. Replies will be held in con-
fidence. Submit resume to:FABRICON PRODUCTS
A division of
THE EAGLE-PITCHER
COMPANY,
River Rouge, MichiganDavid Ottey Has Role
In Allegheny College PlayDavid Ottey, son of Mr. and Mrs.
E. Orville Ottey, 1305 Nottingham
Road, and a student at Allegheny
College, is playing Horace Vander-
gelder, a New York merchant, in
the second Allegheny Playshop
Theater's production "The Match-
maker."NEWARK SCHOOL OF
MUSIC
Individual Instruction
CLARINET—SAX
EN 8-2294

THE EVERLASTING LIGHT



WORLDWIDE BIBLE READING MONTH

NOVEMBER 26-DECEMBER 25

BOULDEN BROS.

FUEL OIL
KEROSENE
540 BARKSDALE RD.
NEWARK, DELAWAREHERE HE COMES - OUT OF THE NORTH-WEST
STRAIGHT TO THE EXCITING 14-ACRE . . .NEWARK
SHOPPING CENTERSEE SANTA IN HIS
SURREY SATURDAY
at the CENTER!IT'S TRUE! SANTA'S COMING TO THE NEWARK SHOP-
PING CENTER THIS SATURDAY! See him tour Brook-
side and Newark Saturday morning in his tiny surrey
then watch him arrive at the CenterTHIS SATURDAY
AT 10:30 AM!See Santa escorted by "Shootin' Sam" the Cowboy! See
him greeted at the Center by "Newarko the Indian!" Be
one of the lucky three hundred to get a FREE
WESTERN HAT from Santa. See Santa take up
his Christmas headquarters in a giant 16-foot
Indian teepee right at the Center!More Fun This Year Than
Ever Before.— plus —
AMERICA'S FINEST VALUES FROM
AMERICA'S FINEST STORES!• Sun Ray • Crichton's Beverages • Scott's
Appliances • Bank of Delaware • Terry
Shops • Minster's • Newark Depart-
ment Store • F. W. Woolworth
• Acme Super Markets • Keene
Hardware • Singer Sewing
Center • Montgomery WardVISIT SANTA
IN HIS GIANT
INDIAN TEEPEEA big 16-foot Indian Teepee will be Santa's
Center headquarters starting

THIS SATURDAY!

VISIT SANTA DAILY

10 AM—NOON; 2 to 4 PM

AND ON SATURDAYS

10 AM—NOON; 1 to 5 PM

FREE!! WESTERN HATS

300 of 'em—absolutely FREE to the first 300
youngsters to visit Santa Claus THIS SAT-
URDAY at the Center! Free Christmas Candy,
too for everyone!

FREE! PONY RIDES,

from 2 to 4 PM on

SATURDAY, DEC. 5

SATURDAY, DEC. 12

SATURDAY, DEC. 19

Bring the youngsters! They'll love this "wild
western" treat on the last three Saturdays before
Christmas!

COSTUME CONTEST

SATURDAY, DEC. 12

Big prizes for boys and girls who come to the
Center in their favorite western costumes on
Saturday, December 12! Look for details in
next week's paper!OVER 14 ACRES FREE PARKING AT DELAWARE'S
FIRST DOWNTOWN SHOPPING CENTER!NEWARK
SHOPPING
CENTER

Social Events

CRAIG-DE FAZIO ENGAGEMENT

Mrs. Ernest T. Hummel of Glasgow and Mr. John T. Craig of Chalfont, Pa., announce the engagement of their daughter Miss Beverly Ellen Craig, a former resident of Bear, to Mr. Lawrence De Fazio, son of Mr. and Mrs. Clement DeFazio of Dickinson City, Pa.

Miss Craig is a graduate of Newark High School. Mr. DeFazio is a graduate of Dickinson City High School and Scranton Lackawanna Business College. Both are with Chrysler Corporation, Scranton. A spring wedding is planned.

PEACH-ATWELL WEDDING NOV. 7

Announcement has been made of the marriage of Miss Elizabeth Hawthorne Peach of 16 Westover Circle, Westover Hills and Mr. Walter Steel Atwell of near Newark.

The ceremony took place on Saturday, Nov. 7, in the Methodist Church, Elkton with the minister, Rev. Harold E. Davis, officiating.

W.S.C.S. CIRCLES MEET DECEMBER 1st

The Circles of the Women's Society of Christian Service of the Newark Methodist Church meet on Tuesday, Dec. 1 as follows:

Circle I—8 p.m. Mrs. Herman Wolston, 270 Indian Road.

Circle II—8 p.m. Ladies parlor of the church.

Circle III—8 p.m. Mrs. Russell Bonney, 500 Brennen Drive, Todd Estates.

Circle IV—6:30 p.m. Church dining hall for covered dish supper.

Circle V—6:30 p.m. Mrs. Charles Ford, 204 Mulberry Drive.

Circle VI—1:30 p.m. Mrs. Henry Mote and Mrs. Chester Ewing, Nottingham Road.

Circle VII—1:30 p.m. Mrs. Paul Hodgson, 19 Sunset Road.

Circle VIII—1:00 p.m. Mrs. Charles Runk, 188 Orchard Road.

Circle IX—10:30 a.m. Mrs. Garland Truitt, 116 Briar Lane.

Circle X—10:30 a.m. Mrs. Rodney Dann, 189 W. Main St.

BLANCHE MAE EVERETT SLIP COVERS, DRAPES A N D UPHOLSTERING

Estimates free with or without material

10 CAROLE ROAD
Chestnut Hill Estates
Phone EN 8-6405

NEWARK STATIONERS STATIONERY-BOOKS

Office Machines SALES SERVICE

44 E. Main EN 8-4030

Christian School Services

Sunday School—Nursery
In Newark, Sundays, 11 A.M.

TESTIMONIAL MEETINGS
3rd Tuesday each month
at 8 P.M.

NEW CENTURY CLUB
141 E. Delaware Ave.
— ALL ARE WELCOME —

ALBERT'S BEAUTY SALON

Modern Hair Styles
Permanent Waving
Tinting & Dyeing

HAIRCUTTING by ALBERT
Open Wed. & Fri. Evenings
Call EN 8-4935 for Appointment
25 W. MAIN ST.

PERMANENTS — A Specialty

NEWARK BEAUTY SHOP
All work by Evelyn Wright Love
Open Evenings by Appointment
(Free Parking in Rear)
20 Academy St. Call EN 8-3373

C. T. "PETE" CROSSAN Electrical Contractor

One Outlet or Complete House Wiring
CALL EN 8-6022

NEWARK SCHOOL OF MUSIC

Individual Instruction
Trumpet—Trombone
EN 8-2294

COME, VISIT US!

Unitarian Fellowship
101 Syphard Drive, Newark
Services & Sunday School 11 a.m.
Nursery Provided

CONSTANCE SMITH Tailoring—Alterations

Invisible Mending—Dressmaking
65 E. Main St.

Get the Jump on Christmas!

ONLY \$1 RESERVES ANY

BULOVA 'TILL CHRISTMAS!

A shadow slim waterproof, 17 jewels, shock-resistant, anti-magnetic, handsome curved expansion band. \$45

A tiny 23 jewel watch with the fire of 23 brilliant diamonds. \$59.50

One of America's most popular watch styles. 23 jewels, self-winding, waterproof, shock-resistant. \$59.50

Prices Include Federal Tax.

You'll be proud to give that Bulova Difference!

J. J. MINSTER & SON Jewelers—Opticians Since 1895

Newark Shopping Center Phone EN 8-3751

Each and every Bulova waterproof watch is tested and certified waterproof by the United States Testing Co., Inc. *Waterproof as long as case, crystal and crown are intact.

PRESBYTERIAN WOMEN PLAN TUESDAY PARTY

The Women's Association of the First Presbyterian Church will meet next Tuesday at 8 p.m. in the social hall of the church.

A party arranged by Mrs. Walter Moore will be followed by a special Christmas service in the chapel. Miss Lois Smith, program chairman, will direct "Candles of the Lord," featuring a chorus of women's voices, with Miss Clesta Dickson, narrator.

A special offering will be taken for migrant workers in the Del-Mar-Va peninsula.

C.A.R. SOCIETY MET SAT. AFTERNOON

The Robert Kirkwood Society C.A.R. met Saturday afternoon at the home of their senior president, Mrs. Harry T. Montgomery, 1202 Nottingham Road.

Mary Lou Newlin, president of the group, presided at the business session.

The afternoon program was devoted to American music in general with special emphasis on the American Christmas Carol.

NORTH STAR HEARS LILY EXPERT

Mr. William Briantall, horticulturist specializing in the culture of lilies, presented an illustrated lecture to the North Star Country Gardeners at the home of Mr. and Mrs. Clarence Moore, North Star Road.

Mr. Joseph Derick, club advisor, introduced Mr. Briantall who presented his Masters Degree at Penn State and taught three years at Purdue University. During the war he set up Hydroponics Gardens at the Ascension Island for the War Department. For eight years he was plant physiologist for Rhomer Haas and collected lilies in Ecuador. Mr. Briantall is associated with Michells, Philadelphia, Pa. and is currently preparing a pamphlet on lilies.

Mr. Briantall advised the gardeners to treat bulbs with a fungicide and to plant bulbs immediately after purchase. Lilies prefer good drainage and light soil so air can get to the roots. Best results are obtained from Fall plantings; the bulb being planted four to six inches, depending on the variety.

Mr. Curtis C. Wallace, Jr., president, conducted the meeting and requested a report from the nominating committee consisting of Mr. Pasquale Albertelli, Mr. Edgar Friedman and Mr. Clarence Moore. Mrs. William Chernish and Mr. Wallace were re-elected and Mr. George Bugler was elected to the executive committee.

In lieu of a December meeting, members will participate in the Christmas Decoration contest.

Y'S OWL 4-H OBSERVE PARENTS' NIGHT

There were 58 members and guests of the Y's Owl 4-H Club who attended the Annual Parent Night meeting and covered dish supper held November 5th in the Red Clay Creek Presbyterian Church on Mill Creek and McKennan's Church Road.

Barbara Gregg was in charge of the program which included a piano solo by Sandy Seymour, accordion solo by Paul Lindell, a skit by David Lindell and Nina Dawson with Faith Dawson as narrator.

Year pins were awarded by Donald Burton, county 4-H leader to the following: Patty Goff, nine years; Richard Ulmer and Barbara Gregg, eight years; Jean Shakespeare, seven years; Nina Dawson, Sandra Seymour, Carol Hitchens, David Lindell, four years; Becky Bachman, Faith Dawson, three years; Paul Lindell, two years; Kurt Bachman and Andrew Lindell, one year.

S. Seymour was chosen safety chairman, replacing Richard Ulmer who leaves for Cape May, N. J. to

DOLMAN DAUGHTER CHRISTENED RECENTLY

Mr. and Mrs. R. Effingham Dolman entertained relatives and friends at their home in North Star following christening of their daughter Helen Gregard on Sunday, Nov. 15. Guests were present from Pennsylvania, New Jersey, and Maryland.

The christening took place in Trinity Episcopal Church in Wilmington with the Rev. Percy Rex officiating.

Godparents were Mrs. Arthur W. Barry of Wilmington; Mrs. Elmer F. Schumacher of Aiken, S. C.; Mr. Alfred E. Daking of Wilmington, and Mr. L. Cheyney Smith, Jr., Patterson, N. J.

PERSONALS

Mr. and Mrs. Frank G. Cohee of Claymont will spend Thanksgiving Day with Mr. and Mrs. J. Harvey Dickey, S. College Ave.

Barry Kay, assistant director of the Newark Recreation Ass'n, is spending the Thanksgiving weekend with his parents Mr. and Mrs. Philip Kay in Greensburg, Pa.

The engagement of Miss Patricia Louise Seal of Wilmington, to Mr. Clifton T. Corkin, Ashland, son of Mr. and Mrs. Edwin Corkin, formerly of Newark, has been announced.

Lt. Norris H. Williams was a weekend visitor at the home of Mr. and Mrs. Isaac Knighton, Choate St. Lt. Williams was returning to his station in Vicenza, Italy, following school in Alabama. His wife and two sons remained in Vicenza.

Mr. Charles J. Wascheck will serve as best man at the wedding on Saturday, Nov. 21 of Miss Mary Anne Stormfeltz, Claymont, and Mr. Robert Jay Barnum, of Alexandria, Va., in the chapel of Westminster Presbyterian Church, Wilmington.

Twelve members of the Crossroads Class of the First Presbyterian Church, served as hosts and hostesses at an evening party for sixty patients in the New Castle Building, State Hospital on Monday evening.

Miss Reba Storey of Westfield, N. J., is visiting the Misses Wilson during the holidays.

Mr. Richard Gee will serve as an usher at the wedding on Saturday, Nov. 28, of Miss Judith D. Jennings and Mr. James F. Dodd, of Greenbriar, Va., in the New Castle Methodist Church.

Sgt. Joseph C. Truskey of Camp H. M. Smith, Oahu, Hawaii, recently was elected treasurer for the PTA of the Chester W. Nimitz Elementary School where his oldest daughter, Cynthia Colette, is a first grade pupil.

Sgt. Truskey attended the PTA convention at Hilo, Hawaii—on the big island—Nov. 13-15.

become a member of the Coast Guards on Nov. 25. Ulmer is a 1959 graduate of H. C. Conrad High School.

The club's annual Christmas party with a gift exchange will be held Dec. 3 at the home of Mrs. Harry Finney at Mt. Cuba.

Horsemanship Features Meeting Of Girl Scouts

Girl Scouts of Troop 112 met recently at the home of Mary Kranz on New London Road, where the Scouts learned to saddle and bridle a horse; rode horseback, and learned to groom a horse.

Leaders of the troop are Mrs. Lloyd Forbes and Mrs. William Kranz.

Girls in the troop include Maurine Bracken, Judy Burns, Ann Arrows, Ella Campbell, Sandra Cronan, Ellen Cronan, Barbara Forbes, Janet Herring, Mary Lou Keister, Barbara and Jane Keppel, Mary Kranz, Carol Monroe, Donna Moore, Christine Olson, Mary Lou Perry, Barbara Thompson, Kim Thorne, and Gail Whitson.

Christmas Dance Planned At Newark Country Club

The Christmas dance for junior and senior high school members of the Newark Country Club and their guests will be held Friday, Dec. 4 in the clubhouse ballroom.

Junior high members are to attend from 8 to 10, and senior high members, from 9 to 11 p.m.

Mrs. Robert Handy will be in charge of decorations, assisted by Mrs. W. F. Baillie.

Mr. and Mrs. A. L. Morris are chairmen of teen-age dances at the Newark Country Club.

Recorded dance music will be provided by George McBride, disc jockey.

Robert O'Neill Serves With Army Honor Group

Army Pfc Robert E. O'Neill, son of Mr. and Mrs. Thomas J. O'Neill, 29 Malvern Road, Newark, is a member of the 329th Transportation Company which was recently named honor company of the quarter at Fort Eustis, Va.

O'Neill entered the Army in August, 1958 and completed basic training at Fort Dix, N. J.

The 22-year-old soldier attended D. P. Sweeney High School in Bayonne, N. J.

NRA OFFICE HOLIDAYS

The Newark Recreation Association offices will be closed this Thursday and Friday, for the Thanksgiving holidays. Located at 315 Delaware Circle, the Newark Recreation Association offices will reopen for business as usual next Monday.

Sometimes the grass looks greener on the other side of the fence because they take better care of it over there.

METROPOLITAN BEAUTY SALON

Newark Shopping Center

Hair Styles of Distinction

• Custom Permanent Waving

—Open Wed. & Fri. Evenings—

PHONE EN 8-1295

for Appointments

Estes To Address New Century Club On State Welfare

A sandwich luncheon and Lloyd Estes, executive director of the Welfare Council of Delaware, with his topic "The Critical Status of the Public Assistance Program in Delaware," will feature the meeting of the New Century Club next Monday at 12:30 p.m.

Mr. Estes, a graduate of Temple University, has an MA degree from the Pennsylvania school of social work. He was a social worker for the Family Court of New Castle County, and is the president of the Delaware section, National Association of Social Workers.

Dessert, and coffee will be served by Mrs. Carl Karlsson's committee of Mrs. Charles Haines, Mrs. Alvin Howell, Mrs. John Moore, Mrs. Fred Nixon and Mrs. Robert Walker.

Mrs. F. William Johns, Jr., club president, who will conduct the business meeting, has announced the appointment of Mrs. Norman Slack as recording secretary, replacing Mrs. Richard Olley who is leaving the city.

Dickson reports that the welfare committee of the New Century Club contributes to Christmas Seals, CARE, Hospital for the Mentally Retarded, Delaware Heart and Cancer Funds; Red Cross, Crippled Children, Infantile Paralysis, Meals for Millions, local needy families, the Aetna Hosiery and Ladder Company, and the Hallows-Mardi Gras.

Local Clubwomen To Hear Welfare Council Director At Sandwich Lunch Event

A sandwich luncheon and Lloyd Estes, executive director of the Welfare Council of Delaware, with his topic "The Critical Status of the Public Assistance Program in Delaware," will feature the meeting of the New Century Club next Monday at 12:30 p.m.

Mr. Estes, a graduate of Temple University, has an MA degree from the Pennsylvania school of social work. He was a social worker for the Family Court of New Castle County, and is the president of the Delaware section, National Association of Social Workers.

Dessert, and coffee will be served by Mrs. Carl Karlsson's committee of Mrs. Charles Haines, Mrs. Alvin Howell, Mrs. John Moore, Mrs. Fred Nixon and Mrs. Robert Walker.

Central PTA Plans Candy, Cake Sales In Fund Campaign

Last Monday, the Newark Central Elementary PTA launched its fund raising campaign for this year, with a candy and cake sale. Order books sent home Monday with the children are to be filled out with orders and returned to school by the children.

Home room mothers will be in charge of distributing the candy and collecting the money.

Proceeds from the sale will be used to buy scientific equipment for use of all grades in the elementary school.

On the order blank, space is allotted for those who wish to contribute money instead of buying candy or cake.

There will be a large assortment to choose, appropriately boxed for the holiday season.

The assortment includes two sizes of candy canes; light and dark chocolates, hard candy, and a plastic candy cane, 21-in. high, filled with hard candy.

For further information, contact Dr. Jerry A. Nelson.

St. Andrew's To Offer Sunday Advent Services

St. Andrew's United Presbyterian Church at Brookside, will observe Advent Sunday at 9:45 and 11 A.M. services, Nov. 29.

On the Christian calendar the Advent season begins four Sundays before Christmas, and is designed to emphasize spiritual preparation for Christmas.

The Pastor, the Rev. Herbert J. Hoffeling, will have as his first Advent sermon topic: "The Ancestry of Christ."

Club Scout Pack 352 will meet at St. Andrew's next Monday evening. The Evening Circle of St. Andrew's women will meet next Tuesday evening, December 1, at the home of Mrs. Frank Kintzler, 7 Marlton Drive, Brookside.

Chesapeake Beagle Club Plans Sunday Field Trial

The Chesapeake Beagle Club will hold the Willis Rogers Memorial field trial on the club grounds this Sunday, Secretary Ray Buckingham announced yesterday.

A large trophy will be presented to the winner in each class, and rosettes will be awarded for placements.

Lunch will be served from 11 a.m. to 1 p.m., and everyone is welcome, with or without beagles.

FOR RENT

APARTMENTS
Furnished or Unfurnished.
One or Two Bedrooms.
Elkton Rd., Newark
PHONE EN 8-2357

FOR RENT

APARTMENTS
Furnished or Unfurnished.
One or Two Bedrooms.
Elkton Rd., Newark
PHONE EN 8-2357

FOR RENT

APARTMENTS
Furnished or Unfurnished.
One or Two Bedrooms.
Elkton Rd., Newark
PHONE EN 8-2357

FOR RENT

APARTMENTS
Furnished or Unfurnished.
One or Two Bedrooms.
Elkton Rd., Newark
PHONE EN 8-2357

FOR RENT

APARTMENTS
Furnished or Unfurnished.
One or Two Bedrooms.
Elkton Rd., Newark
PHONE EN 8-2357

FOR RENT

APARTMENTS
Furnished or Unfurnished.
One or Two Bedrooms.
Elkton Rd., Newark
PHONE EN 8-2357

FOR RENT

APARTMENTS
Furnished or Unfurnished.
One or Two Bedrooms.
Elkton Rd., Newark
PHONE EN 8-2357

FOR RENT

APARTMENTS
Furnished or Unfurnished.
One or Two Bedrooms.
Elkton Rd., Newark
PHONE EN 8-2357

FOR RENT

APARTMENTS
Furnished or Unfurnished.
One or Two Bedrooms.
Elkton Rd., Newark
PHONE EN 8-2357

FOR RENT

APARTMENTS
Furnished or Unfurnished.
One or Two Bedrooms.
Elkton Rd., Newark
PHONE EN 8-2357

FOR RENT

APARTMENTS
Furnished or Unfurnished.
One or Two Bedrooms.
Elkton Rd., Newark
PHONE EN 8-2357

FOR RENT

APARTMENTS
Furnished or Unfurnished.
One or Two Bedrooms.
Elkton Rd., Newark
PHONE EN 8-2357

FOR RENT

APARTMENTS
Furnished or Unfurnished.
One or Two Bedrooms.
Elkton Rd., Newark
PHONE EN 8-2357

St. Michael Youth Group To Aid Christmas Bazaar

The youth committee of St. Michael council, Knights of Columbus, again will participate in the Christmas bazaar of Holy Angels Church, Dec. 5-6.

Chairman Jack Carr has announced the following roster of helpers: Santa Claus—Charley Monahan, John McDerby, Jim Erickson—Bill Howell, Bob Sausserman, and Frank Staudt; Decorations—Bob Gorski, Jack Lakatos, Al O'Neill, Ed Knight, and Dick Dressel.

The 1960 National K. of C. Bowling Tournament has been set for April 30 at Niagara Falls, N. Y., and the formation of a St. Michael Council group has been initiated.

Any member desiring to join this group should contact Ed Knight for further information.

Investiture Held For 19 Brownies In Neighborhood D

Nineteen Brownies of Neighborhood D, Chestnut Hill and Todd Estates, took part in recent investiture ceremonies, making them full-fledged Scouts, entitled to wear uniforms and pins.

This new troop of second graders is led by Mrs. Ross Hofnagle and Mrs. Carl Reuschel.

Brownies invested were Lee Brelick, Kathy Donahue, Thermo Fulghum, Cheryl Hale, Patty Harris, Carol Hofnagle, Kathy Hornberger, Patty Jeffrey, Charlene Loomis, Deborah Lutz, Lynn Mankin, Sarah Masley, Jane McFann, Maura Peck, Linda Reuschel, Susan Richter, Cathy Rosemary, and Dianna Thomas.

Patty Cavanaugh was invested in Troop 454, led by Mrs. David Bowler and Mrs. George Kavanaugh.

Allen To Discuss US Foreign Policy In Public Lecture

George V. Allen, director of the U. S. Information Agency, will visit the campus of the University of Delaware as the guest of the department of political science on Nov. 30.

Mr. Allen will present a public lecture on "The Cultural Activities of the United States Government in Foreign Affairs" at 8 p.m. in Room 220, Hullen Hall.

Prior to his appointment to his present post by President Eisenhower in 1957, Mr. Allen, one of this country's senior career diplomats, had been a member of the U. S. Foreign Service for 28 years, serving as U. S. Ambassador to Greece, to Yugoslavia, to India and to Iran.

He has held the position of Assistant Secretary of State on two occasions.

During his visit Mr. Allen will be entertained by the political science faculty at a tea in the faculty lounge of the Student Center.

Thanksgiving Assembly Conducted At High School

The traditional Thanksgiving Day assembly was held yesterday in the Newark High School auditorium with the Rev. Robert Auffarth of the Bible Presbyterian Church delivering the message.

Andrea Linker conducted opening exercises; John Link read the Governor's proclamation; and Milton Keene read the presidential proclamation.

Newark public schools will be closed Thursday and Friday for the Thanksgiving holidays.

FOR RENT

APARTMENTS
Furnished or Unfurnished.
One or Two Bedrooms.
Elkton Rd., Newark
PHONE EN 8-2357

FOR RENT

APARTMENTS
Furnished or Unfurnished.
One or Two Bedrooms.
Elkton Rd., Newark
PHONE EN 8-2357

FOR RENT

APARTMENTS
Furnished or Unfurnished.
One or Two Bedrooms.
Elkton Rd., Newark
PHONE EN 8-2357

FOR RENT

APARTMENTS
Furnished or Unfurnished.
One or Two Bedrooms.
Elkton Rd., Newark
PHONE EN 8-2357

FOR RENT

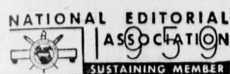
THE NEWARK POST

Founded January 26, 1910, by the late Everett C. Johnson

An Independent Newspaper
Published Every Thursday by The Newark Post, Inc.
14-16 Thompson Lane, Newark, Delaware
Locally and Independently Owned and Operated

Legal and Display advertising rates furnished on request.

W. H. WAGGAMAN, JR. PUBLISHER
Editorial Office: 14-16 Thompson Lane, Newark, Delaware
Phone EN 8-4100
Second class matter, March 10, 1910, at the Postoffice at Newark, Delaware, under the Act of March 3, 1879.



Newark, Delaware, Thursday, November 26, 1959

WITH GRATEFUL HEARTS



A NEW LOOK AT THANKSGIVING

"Let's do away with this phony frost-on-the-pumpkin business," a Gettysburg College professor of English urged today as he called for a Thanksgiving free of "false practices and all their sentimental symbols."

Dr. Francis Mason, in an address prepared for a Thanksgiving Day radio broadcast "nominated the following for oblivion:

"Let's have no more Pilgrim fathers lugging fat turkeys out of the forest primeval, their muskets cocked for hungry Indians, under the benediction of the harvest moon.

"No more confusing the gentle glow of honest fellowship, with the animal heat of a full stomach.

"No more provincial pride masquerading as Christian righteousness.

"No more governors' proclamations or other civic substitutes for prayer.

"No more annual orgies of commercialism and self-indulgence blasphemously called by Christian names—Thanksgiving, Christmas. We must not perform a farce in the name of national worship.

"And, no more of the conclusion that because we are urged with special blessings we must surely be the chosen people of God."

"Our package of Thanksgiving prayers should not be addressed to some heavenly executive in charge of the cosmic distribution of consumer goods. And we should not expect them to be answered by celestial special delivery," declared the veteran professor, who has been teaching at Gettysburg College since 1925.

"It seems to have become our custom to give thanks less for universal grace than for our special blessings—the blessings we enjoy while others do without them," Dr. Mason held. Asked what we should give thanks for, if not for enjoyment of special privilege in a suffering world, the professor answered:

"We should give thanks, among many other things, for the privilege of work. Dedicated labor is a high form of worship. It is our noblest active privilege, for it makes us co-builders with God in the continuing work of Creation.

"We should give thanks for our growth in the realization of human brotherhood, which will be accomplished not by any trite slogan of equality but only by long patience and healing years.

"We should give thanks for the good earth and the temperate use of material comforts, but never for luxuries which are ours because we withhold them from others.

"And let us give thanks for the grace of God, received in our mortal imperfection. To know this grace, and to express it in our daily lives, is honest thankfulness. Thanksgiving is our noblest capability," he concluded.

CITY OF NEWARK

Delaware

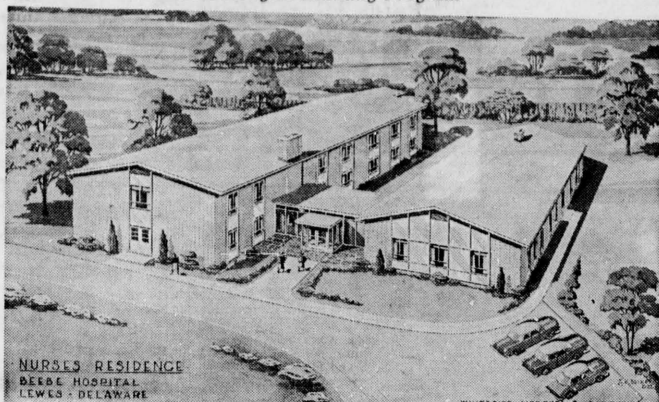
PLANNING COMMISSION

Agenda

DECEMBER 7, 1959
7:30 P.M.

- 1-REPORT OF OFFICERS
 - A. Minutes of Meeting November 2, 1959.
 - B. Minutes of Special Meeting November 13, 1959.
 - C. Minutes of Special Meeting November 16, 1959.
- 2-PETITIONS
 - A. NONE.
- 3-OLD BUSINESS BY PLANNING COMMISSION
 - A. Consideration of the need for uniform rules, regulations and requirements of applicants on matters to be referred to the Planning Commission.
 - B. Review of the Swimming Pool Proposal including recommendations on plans and method of financing.
 - C. Discussion on Procedure of the Planning Commission.

Beebe Begins Building Program



NURSES RESIDENCE
BEEBE HOSPITAL
LEWES - DELAWARE

A \$250,000 contract to construct the Beebe Hospital nurses' residence and school shown in the architect's drawing above has been awarded to James H. Wood, Dover contractor. The building is to house student nurses who must now reside in private residences because of lack of hospital-provided rooms. Completion is expected in time for enrollment of a new class of nurses late next summer.

American Viscose Awards U.D. Senior Scholarship

Joseph Yellin, University of Delaware senior, has been awarded an American Viscose Corporation Scholarship for 1960, Donald P. Hardy, assistant dean of students, announced today.

A graduate of Mt. Pleasant High School, he is majoring in physics

and mathematics. A dean's list student, Yellin received a medal in recognition of his high school achievements in general science. He is a member of Phi Kappa Phi honorary scholastic society.

The American Viscose award is one of six fellowships and 16 scholarships established by the firm to benefit advanced education. The art of winning in business is in working hard—not taking things too seriously. —Elbert Hubbard

BOW ATTENDS SEMINAR

Gerald H. Bow, representative of Nationwide Insurance in Newark, was one of 25 agents attending a three-day advanced seminar conducted at the Francis Scott Key Hotel, Frederick, Md., last week.

The art of winning in business is in working hard—not taking things too seriously. —Elbert Hubbard

Farm-Home Week Plans Announced By Dean Worrirow

Annual Event Scheduled Feb. 9-11 At University For Farm, City Residents

The dates of Feb. 9, 10, and 11 for the annual Farm and Home Week program at the University of Delaware were announced today by Dean of Agriculture George M. Worrirow.

"With features for both farm and city people, Farm and Home Week has become one of the most attractive winter events in Delaware," the agriculture dean stated.

University of Delaware agricultural scientists will report research aimed at more effective plant disease and insect control; reduced losses and increased efficiency in poultry and egg production; improved crop, livestock and dairy production, and better marketing practices.

A number of out-of-state speakers also will be on the program. Agricultural topics will include soybeans, broilers, egg production, corn, dairy, fruit, potatoes, sheep, beef, vegetables and irrigation.

Homemakers should be interested in discussions on antique glass, home management practices, nutrition, flower arrangement, clothing and furniture.

General interest topics include landscaping and horse management as a hobby.

Chairman of the event is Dr. Sam Gwinn, assistant director of the Delaware Agricultural Extension Service. Program chairman is Dr. Dale Brav, chairman of the department of entomology.

"Good Old Days" Sunday Treat Extended With Improvements In Poultry Farming

The famous "Good Old Days" when chicken was a Sunday treat, or even twice a year affair, are over. Now homemakers serve chicken once or twice a week, researchers report.

The development and improvement of poultry farming has increased the supply and decreased the price of chicken so much that many housewives now consider it one of their best meat buys.

A recent survey of 576 Wilmington and suburban homes, conducted by University of Delaware agricultural economists, showed that 44 per cent of Wilmington homemakers and one-third of suburban housewives serve chicken one or more times per week. Also, the level of family income did not appear to influence the frequency of serving chicken.

Freshness was given as the reason for buying their chicken from a particular source by more than a third of the homemakers. Seventy-five per cent wanted packages dated. A number of homemakers mistakenly thought chicken offered in weekend specials in retail stores was old chicken that had to be moved fast before it spoiled.

Putting a date on packages would help assure them that these chickens are fresh, researchers believe. Many people do not realize how quickly broilers move through the

LETTERS TESTAMENTARY
Estate of Ida M. Clark Deceased. Notice is hereby given that Letters Testamentary upon the Estate of Ida M. Clark late of White Clay Creek Hundred, deceased, were duly granted unto Albert C. Clark and Helen Clark Willis, formerly Helen Clark on the twentieth day of November, A. D. 1959 and all persons indebted to the said deceased are requested to make payments to the Executors without delay, and all persons having demands against the deceased are required to exhibit and present the same duly probated to the said Executors on or before the twentieth day of August, A. D. 1960 or abide by the law in this behalf.

Address John P. Sinclair, Attorney-at-Law, Delaware Trust Bldg., Wilmington, Del.

Albert C. Clark and Helen Clark Willis, formerly Helen Clark Executors

Nov. 26, Dec. 3, 10

Governor Slates Special Conference For Civil Defense

Governor J. Caleb Boggs has invited 270 key persons with civil defense functions in state government in Delaware to a civil defense conference on Monday, December 7, at 1:25 p.m. in the Dover Armory in recognition of National Civil Defense Day.

This date is also celebrated as Delaware Day in recognition of Delaware's role in the founding of this country, when Delaware acquired the slogan "The First State" for being the first to ratify the Constitution of the United States.

Newark's Captain Robert N. Downes, (USN Ret.) and State Director of Civil Defense, has arranged for speakers from Region II, Office of Civil and Defense Mobilization, Olney, Md.

Emphasis will be on family fallout shelters as the key to survival should another "Pearl Harbor Day" be our lot.

James Lewis Participates In Artillery Field Trial

Army Pfc James K. Lewis, 832 Salem Church Road, Newark, recently participated with the 35th Artillery in a field training exercise in Germany. Lewis, a cannoneer in the artillery's B Battery, C in Wertheim, entered the Army in 1958; completed basic training at Fort Chaffee, Ark., and arrived overseas that August.

Richard Parsons Assists Marine Landing In Spain

Marine Pfc Richard C. Parsons, son of Mrs. Laura P. McCrudden, Pleasant Valley Road, Newark, took part in a recent amphibious landing exercise, at Almeria, Spain, with members of the Third Battalion, Eighth Marine Regiment. The exercise at Almeria demonstrated the Marine Corps' vertical assault doctrine, employing helicopters along with conventional landing craft to assault targets on a mythical enemy-held beach.

IN NEWARK
for
PHILCO and MAYTAG
Appliances
See
Bob O'Neal
THEO. S. JONES
APPLIANCES
129 EAST MAIN ST.
PHONE EN 8-1245

Sign outside a church:
CH—CH
What's Missing?

ST. PAUL'S LUTHERAN CHURCH

So. College Ave. & Chestnut Hill Rd.



SACRAMENT OF THE ALTAR

8:30 & 11:00

SUNDAY SCHOOL

8:30 & 9:45

Wesley Mennonite Chapel

Route 896 N.W. of Newark, Del.

SUNDAY SCHOOL—10 a.m. MORNING WORSHIP—11 a.m.

EVENING SERVICES—First Sunday of each month—7:30 p.m.

Pastor Herman N. Glick, Atglen, Pa.

Phone LY 3-5757

FORD TRACTORS

AND IMPLEMENTS

SALES, PARTS AND SERVICE

Industrial & Farm

Equipment Corp.

Delaware Division—Cooch's Bridge Road

Newark, RD-1

PHONE EN 8-1654



OAKLANDS



HOMES
for
YOU
FOR INFORMATION
CALL EN 8-8315

HUGH F. GALLAGHER, Jr.
DEVELOPER AND BUILDER

Christmas Seals 1907-1959



Coach Irv Wisniewski's Blue Hen Cagers To Open Season On Monday At Haverford

Basketball takes the University of Delaware sports spotlight next Monday night as the Blue Hens open the season at Haverford.

A tougher-than-ever schedule faces the Hens after last year's 9-13 record.

The traditional schedule of teams in the Middle Atlantic Conference university division is enhanced by inter-sectional rivals Ohio State and Navy, and participation in the Downeast classic in Bangor, Me., during Christmas vacation.

The departure of graduate Frank Wickes, second highest scorer in the history of the university, will hurt, but Coach Irv Wisniewski believes that his experienced club can win.

Wickes, an all-East and all-conference selection, handled the bulk of the scoring for the Hens for the last three years, rolling up a career total of 1,089 points.

Coach Wisniewski has a well-balanced rebounding team. None of the probable starters are under six ft., and Co-Captain Chuck Hamilton and Al Wentz both reach 6-5. Hamilton was another all-conference pick and led the team in rebounds.

An all-important feature of this squad of 11 players, is speed. Junior Tommy Adams and Co-Captain Gil Mahla—the fastest men Delaware has seen in years—will spearhead the fast-breaking Blue Hen attack. Adams, Hamilton and Mahla, the three returnees from last year's

starting five, have improved considerably judging from phenomenal pre-season averages.

Jack Baly and Jay Lynch, two key reserves last season, round out the starting team, and have real potential.

The team lacks reserve strength, but among four sophomores, Bill Wagamon and Tom Schenauer are the best bets for a starting lot. Schenauer is the shortest man on the squad, but is a deadly outside shot and good floor man.

The schedule:
Dec. 2—Haverford Away
Dec. 5—Lehigh Away
Dec. 9—Johns Hopkins Home
Dec. 12—Hofstra Away
Dec. 15—Temple Home
Dec. 18—Lafayette Home
Dec. 20—Downeast Classic Away
Jan. 7—Bucknell Away
Jan. 9—Swarthmore Away
Jan. 11—Ohio State Away
Jan. 14—Gettysburg Home
Jan. 16—Rutgers Home
Jan. 18—Ursinus Home
Jan. 20—Lehigh Home
Jan. 30—Wash. College Home
Feb. 4—P. M. C. Away
Feb. 9—Del. Frosh Home
Feb. 13—St. Joseph's Home
Feb. 17—Muhlenberg Home
Feb. 20—Navy Away
Feb. 27—Bucknell Home
Mar. 2—Swarthmore Home

SIX

19 Seniors Close Hen Grid Careers With Bison Finale

Delaware To Lose Nine Starters From Nelson's MAC Championship Squad

The Delaware-Bucknell football classic last Saturday at Lewisburg, Pa., marked the final appearance in Blue and Gold uniforms for 19 Delaware seniors, one of the largest contingents of graduates in Coach Dave Nelson's nine-year reign on the Newark campus.

Of the number, nine are starters—some of the best football talent ever to attend the university, as the Blue Hens' 8-1 record indicates. The entire starting lineup, including Quarterback Gampy Pellegrini, from Philadelphia; and the three "Rushniks"—Jack Turner, of Philadelphia, the top Blue Hen ground-gainer in history; John Bowman, from York, Pa., and Tony Suravitch, fullback from Chester, Pa.—will be absent next fall.

Seniors along the Hens' hard-hitting line from tackle to tackle are John Mordas, from South River, Pa.; Leon Dombrowski, from Wilmington; Captain Mark Hurn, Newark; Jim Garvin, Philadelphia; and Ray Klapsinsky, Newark.

The first string ends—Mickey Heineken and Dick Broadbent—will be back next year—praise be. Front-line replacements who are departing include Ends Karl Frantz, from Audubon Park, N.J., and Bob Reeder, Yeadon, Pa.; Tackle Dan Trippi, Englewood, Cliffs, N. J., and Guards Bob Johnson, Wilmington, and Otto Fad, Fort Washington, Pa.

Other graduating reserves are Halfback Hal Grosh, Seaford, and Don Osmun, Delaware, N. J.; Fullback Pete Shelton, Franklin, N. J., and Ends Howard Moyer, Dagsboro; and Al Huey, Milford.

shortly thereafter, planing down from over the trees across the creek, wings a-curve, and weaving in from dead ahead.

"Take him," Bus said generously, and we tried—three times—and big Buck, the Chesapeake Bay retriever, frowned at his friend and fellow resident of Academy Street in pained surprise.

Rugged Ray Ott joined us, reporting that he had knocked a mallard down enroute from his house to the blind, but that he had been unable to find the bird.

Good old Buck took care of the detail, locating and gently snapping his jaws on a wing-tipped hen malar after a brief search.

While Bus Brown was checking the stove and coffee water in the snug shack some 100-ft. back in the woods from the shore blind, we managed to knock one of a pair of black ducks out of the sky over the decoys and onto the water. And while spraying the surface of Plum Creek with shot in an effort to stop the swift-swimming cripple, we watched the black make the far shore—lost, despite subsequent intensive search by Brown, Buck, and the sloppy shooter.

A single black speck high overhead, wheeled at Bus' calling, and came whistling down, down, down, crossing in front of us over the decoys. And Bus Brown knocked it down with a single shot, while Buck took care of retrieving operations like a champion.

Things tapered off as the morning wore on, and while Bus was back in the shack and we were sitting half asleep in the blind, a roaring rush of air brought us to our feet to see the silver white wings, dark, chocolate brown feathered bodies, and orange legs of a pair of black ducks power-diving from nowhere out of the gray sky onto the decoys. Both ducks bounced straight up some 100-ft. on suddenly braking wings, and our one excited shot—there wasn't time for more than one the way they were moving—passed safely below the rocketing wildfowl.

A trio of blacks cupped their wings and dropped down over the decoys later in the afternoon, and after giving us three shots, Bus opened up and knocked one out of the air—and again Buck swam out like a champ and brought the duck back.

Last Chance
Late in the evening, with time fast running out, a lone black duck roared over the decoys in a real last chance. Again Bus Brown gave his companion the honor, and again after three futile shots—our last, in

At The Babe Ruth League Banquet



Bob Bowman, (second from left) outfielder and pitcher for the Phillies, and guest speaker at the Newark Babe Ruth League banquet last week at the Newark Country Club, is photographed with Conrad Dancy, Toastmaster "Doc" Burke, and Sam Burke.

Exterminator Handicap To Honor Veteran Pimlico Fans Consider As "The Greatest"

The roster of great horses which have raced and won at Pimlico over the past half century includes such awesome names as Man o' War, Citation, Count Fleet, Equipoise, Tom Fool and Native Dancer—but there will be a handful of oldtime fans present this Saturday who will disdain them all as the greatest.

The occasion will be Saturday's 17th running of the Exterminator Handicap—named for a gelded horse of which 40 years ago carried weight and ran distances that today would probably bring cries of anguish from the SPCA fringe.

Horse owners and trainers today generally weep copiously when a racing secretary sees fit to package

spite of what seemed plenty of lead money, splashed water three feet behind the barreling bird—he killed it going away at an impossible distance.

Late last Tuesday afternoon, in hopeful afterthought, Doc Calder, Hugh Gallagher, and Bus Townsend set out for their goose pits below Church Hill, Md., just off the Chester River—and experienced a bit of shooting more dreamed about than realized.

In less than half an hour, all had their limits of two geese apiece, with three cornfield mallards for good measure.

"And we almost stayed away," Mr. Gallagher shuddered slightly.

The memory of these performances at Pimlico brought about the creation of the Exterminator Handicap in 1940. Exterminator was then 22 years old, but still looked racing trim, and he was sent back to Pimlico for a last time to lead the field to the post in the race named for him.

The gallant old warrior succumbed finally in 1945. Behind him he left a record of 50 victories in 100 races—eight years of campaigning from Canada to Mexico, rattling around the country in a box car to duel the likes of Sir Barton, Bonifacio, Cudgel, Mad Hatter and The Porter—the best of the time.

This is the horse they honor Saturday at Pimlico.

GREGG'S ESSO
MOTOR TUNE-UP
and
BRAKE SPECIALIST
EN 8-9925

Home-Cooked Food
at SHEP'S
Orders To Go
Breakfasts
Lunches
Dinners
Open 7 to 7
1100 Ogletown Rd., Newark.
Subs — Hamburgers — Shakes
PHONE EN 8-9840

R. S. JARMON
14 Kells Ave. EN 8-2232

NATIONWIDE
LIFE INSURANCE COMPANY
HOME OFFICE — COLUMBUS, OHIO

Going hunting?
SEE US!
ALL TYPES OF
GUNS
and
AMMUNITION
Foreign & Domestic

We Buy, Sell and Trade Guns
See Our Complete Line of Sporting Goods

S. D. KIRK & SON
173 E. Main St. Newark, Del.

Hoffman Addresses Touchdown Club Luncheon Meeting

Newark Football Coach Praises Current Squad; LeRoy Hill Reviews Past

Bob Hoffman, Newark High School head football coach, and guest speaker for the Newark Touchdown Club luncheon meeting last Monday at the Newark Country Club, reviewed the Yellowjackets' performance for the season, cited prospects for the coming year, and praised his squad with "I'm real proud of these boys. They work hard, are respectful—a good bunch of boys."

Commenting on the Thanksgiving Day game with Conrad High School, Hoffman said "Conrad has been an up and down club, but they're big and have real potential. I was proud at their 41-0 loss to Mt. Pleasant last week."

The Yellowjackets meet Conrad this morning in the season's finale for both clubs. Newark has lost but one game—a touchdown to the new Blue Hen Conference champion of Mt. Pleasant's Coach Wayne Pollari, former Newark High School and University of Delaware athlete.

Reviewing Newark's loss to Mt. Pleasant, Coach Hoffman said "we made three mistakes on the touchdown play, and I take the blame for the errors. After all, I'm supposed to teach those boys how to play the game. Lambert, who runs the 100 in 9.7, took a pitch-out and was around the corner for the touchdown."

Hoffman said that nine of his starting eleven will graduate, but that the Yellowjackets have a good nucleus for next year with Guy Cage, Lloyd Wells, Charlie Word, Pearl Hubbard, Bob Bell and others.

Program Chairman LeRoy Hill reminisced of the Yellowjacket squad, of which he was a member, playing in Newark High School's first football game as the Newark All-Stars vs. Wilmington High School just 44 years ago.

Newark High School girls conducted a bake sale to provide funds for football equipment. Hill related, and for shoulder pads, he wore his mother's shawl.

And Cap'n Hill's punishment was not confined to the gridiron when his father, who objected to football, discovered his son's shiner.

New Hall of Fame Jockeys Featured At Pimlico Track

One of the special features of the opening of the Pimlico meet was the first public display of the portraits of the three newest members of the National Jockeys Hall of Fame.

Oil paintings of Willie Shoemaker, Mack Garner and Carroll Shilling were hung in the permanent Hall of Fame gallery which previously included 12 of the nation's greatest riding stars. The new portraits, like those which preceded, are by Henry Cooper of Pikesville, Md., one of the country's outstanding portrait artists.

Cooper's work in the past has drawn high praise not only from those who knew the subjects because of their racing activity but from members of the families of those jockeys who are deceased.

Shoemaker, only living member of the trio voted into the Hall of Fame this season, recently posed in New York for Cooper while the

Delaware Beats Bucknell, 22-6 Despite Half-Time Tie To Conclude 8-1 Season

With the score 6-6 at the half, Coach Dave Nelson's Fightin' Blue Hens surged ahead in a stretch run to beat Bucknell's Bisons 22-6 last Saturday at Lewisburg, Pa., and conclude an 8-1 season.

The Blue Hens scored the first time they had possession. Tony Suravitch made the big gain, the blonde fullback blasting through the middle for 33 yards to the Bucknell 17, after a fake hand-off to Jack Turner. Suravitch on two more carries got a first down on the two and then hurdled Center Mark Hurn to score. A pass for a bonus conversion failed.

Then it was the Bisons' turn to score, on a 72-yard passing barrage by Terhes. He connected with Eachus on the goal-line for the touchdown throw from the 14. Eachus

also passed for an apparent points-after-touchdown, but an eligible-receiver penalty made the Bisons try again from the 23, and placekick missed.

Leon Dombrowski recovered in the half, but Delaware could capitalize on it.

Delaware dominated a fierce second half.

Captain Mark Hurn, called "the center we've ever had" was a defensive star.

The most spectacular run of the day set up the tie-breaking touchdown. John Bowman took off to the right, cut back inside the end, laterback Gampy Pellegrini and the same time threw a crumbly block to Bucknell traffic. All gained 42 yards to the 27.

Five plays later, Turner scored on a four-yard run, carrying Suravitch with him for the last three yards. Again hit the line for two extra points.

Delaware's final touchdown, in last period, topped a 53-yard run. Suravitch kept it alive with a four-and-one hurdle over the middle and scored with a 16-yard touchdown run, bursting through a hole at center. Turner carried two extra points.

For football competition, the Middle Atlantic Conference is divided into three sections: the university division, which includes some of the larger schools in the conference; the northern; and the southern college divisions.

Johns Hopkins University wrapped up the southern college division championship on Nov. 14 by winning its fifth straight conference game. The Blue Jays added a sixth win on Saturday, decisively Western Maryland to maintain their perfect record in MAC competition.

The university division title was won by Delaware on Nov. 7. Last Saturday the Blue Hens handed Bucknell a 22-6 defeat to close the 1959 gridiron season with a 5-0 conference record.

None of the 1959 MAC champions are repeaters. Two 1958 titleholders— Juniata of the northern college division, and Pennsylvania Military College of the southern college division, finished this season as runners-up.

Rutgers, last year's university division champ, finished fifth this season after losing to Delaware and Bucknell.

Only one MAC game remains to be played, a Nov. 26 contest between Hofstra and Scranton.

portraits of Shilling and Garner will have been done from photographs and information furnished by the friends and families of the former jockeys.

ANGIE'S SUB SHOP

Subs - Spaghetti - Pizza
Steaks
Homemade SPAGHETTI SAUCE by the quart or pint
ORDERS TO TAKE OUT

97 WILBUR ST., IN NEWARK
Call EN 8-2498 for Directions or For Orders

SEE, HEAR and COMPARE
THESE MAGNIFICENT
Magnavox
HOME ENTERTAINMENT VALUES!

Spectacular new
6-SPEAKER
STEREO
IN ONE
BEAUTIFUL CABINET
\$199⁰⁰ in mahogany

the Aristocrat
Nothing else to buy.

Here's Proof—that with a Magnavox—good stereo needn't be expensive. Compare the Aristocrat's fine furniture, its thrilling stereophonic performance, its quality components: Two separate sound systems—6 speakers with two 12" bass; powerful two-channel amplifier; exclusive Magnavox precision changer with Stereo Diamond Pick-up is top-mounted under a convenient gliding panel. Several beautiful hand-rubbed finishes.

HALL'S TV CENTER
182 E. Main St. Newark, Del.



State License — \$2.25
Hunting Supplies
JACKSON'S
90 E. Main - EN 8-1695
OPEN WED., THURS., FRI.
TIL 9 P.M.

More pleasure
per gallon
with **BSA**



250 O.H.V. STAR
Star choice for thrifty power, this BSA model brings you great features, great styling, great pleasure unending. See it in our Showrooms!

A&H MOTORCYCLES
Company
90½ East Main St.
Rear of Jackson's Hardware
PHONE EN 8-2972
Weekdays 5:30 to 9 P.M.
Saturday 9 A.M. to 5 P.M.

30" wide
side-to-side ...

Maximum cooking
convenience in a
minimum of space



The new look
in gas ranges

Caloric

Exclusive Caloric Deluxe 30-inch gas range features Thermo-Set top burners, Roto-Roaster Rotisserie, meat thermometer, and automatic clock-controlled, extra-capacity (24" x 20") oven. Many other features, too. Caloric is America's easiest range to keep clean. See it soon.

KEEN
COMPRESSED GAS
CO., Inc.
Phone PO 4-4490
4305 Miller Rd., Wilmington

hi-neighbor

By: Gibby Young

THANKSGIVING DAY

It's a day to pause and be grateful for all the good things of the past year. Our Pilgrim Fathers first celebrated Thanksgiving in 1621. It was an occasion of feasting and prayer in observance of the harvest. Look around. Blessings.



Surely there are many more than you realized. You have been taking them for granted. We now commemorate this day with a special family dinner.

We want to thank you for the business you have given us for the past year. We are indeed grateful and hope to continue the pleasant association.

Phone ENdicott 8-8338

Young & Williams
95 East Main Street
NEWARK, DELAWARE

For
MEN ONLY

ALTERATIONS
MEN'S CLOTHING

Delaware's Finest

—for—
• Men's Clothing

• Haberdashery

• Shoes

MURRAY'S
TOGGERY

146 E. Main Street
NEWARK, DEL.
Open Wed. & Fri. 'til 9 P.M.

Christiana Calling

Sylvia P. Jones, Correspondent
Phone: EA 8-7413

Whittington presided at Debbie Kee, clothing and personal accounts; Connie Loose, foods and personal accounts; Gene Biddle, electricity; Jackie Jones, health and safety; Dottie Whittington, foods and clothing; Dick Whittington, horses; Richard Dianich, home improvement. Dottie Whittington also was awarded a cake pan for excellence in a foods entry at the county achievement fair.

McCANN
RENTALS

Continental, 3-rm. apt. . . \$65
Lincoln Dr. College Park
Country — Brick 4-bed-
room, 2-car garage . . . \$100
Matthews Split, 3-BR . . . \$110
Country — Brick 4-bed-
room, 2-car garage . . . \$135
Susquehanna Circle, Binns
bedrooms, full basement \$115
Call EN 8-2538

HAROLD D. CROUSE

Grading
and
Excavating
Front End Loader Work
—FOR FREE ESTIMATES—
PHONE EN 8-4097

WHY SPEND
YOUR CASH?

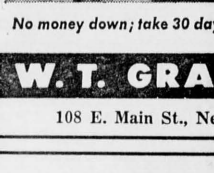
Now GRANTS OFFERS YOU A
CHOICE OF 3 CONVENIENT

"Charge-It!"
PLANS

1
30-DAY CHARGE
ACCOUNT WITH
OPTION TERMS



2
CREDIT COUPON
ACCOUNT—FAST
AS CASH TO USE



3
SPECIAL ACCOUNT
FOR LARGER
PURCHASES

No money down; take 30 days or months to pay!

W. T. GRANT CO.

108 E. Main St., Newark, Del.

RAIN?



We never worry about it—not
since we had our raincoats
waterproofed by M&M! If
you're not sure about your
winter rainwear, play it safe
and have it M&M waterproof-
ed. The famous CRAVEN-
ETTE PROCESS is exclusive
with M&M in this area!

11 NORTH CHAPEL ST.
in NEWARK and
LIMESTONE ROAD
& KIRKWOOD
HIGHWAY
M&M CLEANERS
DRIVE-IN
CLEANERS
SHIRT LAUNDRY
STORAGE VAULT
YOU BET! WE GIVE S&H GREEN STAMPS!

twoski and Lois Eldridge have been
assigned to Bus 24; Franklin Hanna
and Emma Reed for Bus 22; and
Jackie Jones for duty at the traffic
light in Christiana.

Christiana Cubs and Boy Scouts
under the leadership of Rhoads
Speck and Don McLaughlin, have
gained county-wide fame for their
all-out cooperation with the Good-
will Industries Good Turn Day last
Saturday. Forty-five Cubs, Scouts
and Explorers distributed over 700
bags to be filled with donations,
and collected most of them in a
speedy blitz campaign Saturday
morning, assisted by parents with
cars and station wagons.

The boys have announced that
their next fund-raising project will
be a turkey supper to be served Dec.
5 in the Christiana Methodist Church.
Joseph Shetzler, adult
chairman, will be assisted by the
Mothers Auxiliary and the
women of the church. Tickets
should be obtained in advance from
any of the scouts.

Five new members were received
into the Salem Methodist Church on
Sunday.
Members of the Every Member
Canvass Committee, headed by
Elder William Cross, will meet for
lunch in the Hall Memorial Building
immediately following morning
worship service on Nov. 29 and Dec.
6.

The United Presbyterian Women
of Christiana met last Thursday,
and decided to cooperate in the church-
women's project to contribute us-
able Christmas cards to the Gov-
ernor Bacon Health Center. Cards with
suitable stamped envelopes should
be brought to the church by Dec. 6.
F. T. Dianich made a business
trip to Cleveland last week.

A. H. Jones was in Kansas and
Iowa on business last Monday and
Tuesday.

Thanksgiving Day
Prayers, Sharing
Request Of Boggs

In his annual Thanksgiving Day
proclamation, issued this week at
Dover, Governor J. Caleb Boggs
called upon Delawareans to not
only mark the day with prayers
of thanksgiving and display of flags,
but also to share their abundance
with others.

The chief executive pointed out
that "there are in other lands those
less fortunate who can barely earn
their daily bread." These, he said,
"need the assistance of individuals
who have more than their actual
needs demand."

He praised the work of all religi-
ous denominations in their efforts
to promote "share-our-surplus" pro-
grams and urged everyone to par-
ticipate "to show our own apprecia-
tion for blessings bestowed upon us."

Delawareans were also urged to
pray "for the day when throughout
the world there shall be no famine,
no misery and no bloodshed—but a
world united in praising the Al-
mighty for His great goodness to us
all."

Incentive Price Of Wool
To Continue At 62 Cents

The incentive price of shorn wool
in the national wool program will
continue next year at 62 cents a
pound, the same as for the first five
years of the program, according to
Delaware Agricultural Stabilization
and Conservation Committee Chair-
man William N. Hopkins.
The price is for the 1960 market-
ing year, which begins next April 1.
Payments to growers will be fig-
ured in the same manner as this
year, Hopkins said. Each producer
will receive a shorn wool payment
which is equal to a percentage of
his return from wool sales. The
percentage will be the amount ne-
cessary to raise the national average
price received by all producers for
shorn wool up to 62 cents a pound.

Lowest Prices For Pork
Seen By Mid-December

Lowest pork prices of the year
are forecast for mid-December—a
good time to ready the freezer for
your favorite part of the pig—M.
Katharine Jones, county home dem-
onstration agent, says.
It is perfectly safe to freeze pork,
but certain precautions should be
taken, Miss Jones suggests. Your
freezer should be at zero or below
to keep the original quality of the
frozen food.
The damaging effects of higher
temperature cannot be seen or fast-
ed in early stages, and pork is by
far the most difficult of meats to
keep. Very little is known about
what makes it go bad.
After rapidly starts it spreads
very quickly, starting on the outer
surface and moving toward the
center, Miss Jones reports.

REAL ESTATE
A. C. LITZENBERG

Walnut Lane—Elkton 737
or 1208

AN UNUSUAL PROPERTY
445-ft. on Elkton-Newark Road,
640-ft. on Barksdale Road. 2-3-
acres, 4-bedroom home in perfect
condition. 2-Story barn with 2-car
garage, poultry house, old shade.
lovely flowers. . . . \$21,000
COUNTRY HOME, most attractive
ranch with stream, overlooking
hills; 1½-acres beautifully land-
scaped; 3-bedrooms, very large
modern kitchen and dining area
with birch cabinets (59) baseboard
hot water oil heat, plastered walls,
insulated throughout. Full size base-
ment, plastered. Two miles from
Elkton, 4 miles from Newark. Very
good buy at \$14,800.
FIVE WATERFRONT properties on
North East River.
Many other listings in Elkton area.
JOHN H. LITZENBERG
Salesman
207 W. Main St. — Elkton 1208
—Open Evenings—

DODGE SALES RISE

Sales of 1960 Dodge passenger
cars in the first 10 days of Novem-
ber were 71 per cent higher than
sales in the same period last year,
M. C. Patterson, Chrysler Corpora-
tion vice-president and general
manager of Dodge division, said
today.

"In Balaam's time it was con-
sidered a miracle when an ass spoke.
Now we think nothing of it when
they drive cars,"—Frank Lawrence.

NOTICE OF LETTING
CITY OF NEWARK
MECHANICAL SEWER RODDER
Sealed Bids
EQUIPMENT CONTRACT #GE 59-12
Specifications, Instructions to Bid-
ders, Proposal, and Equipment Pur-
chase Contract forms are available and
sealed bids for supplying the subject
item will be received until 4:00 P.M.
Tues. Dec. 1st, 1959, in the City
Manager's Office, Newark
Academy Building, Academy & Main
Streets.
Mayor & City Council
Newark, Del.
Nov. 26, 1959

ADVERTISEMENT FOR BIDS
Sealed proposals will be received by
the Delaware State Highway Depart-
ment at the office of the Superintendent
of State Building at Troop, State
Road, Delaware, until 10:00 A.M. Est-
imated Standard Time, December 9, 1959,
and thereafter publicly opened for
the following contract:
CONTRACT 1957
TROP NO. 1
BUILDING AND GARAGE
FOR DELAWARE STATE POLICE
PENNY HILL
NEW DELAWARE COUNTY
Attention is called to the Special
Provisions in the proposals and the
contract and the Contract Agreement.
The Employment Agency for this
contract is the Delaware State High-
way Department, Office of the Super-
intendent of State Building, 133 South
Broad Street, Newark, Delaware.
Work on the above contract shall
begin promptly after the execution of
the contract and shall be completed
within time specified.
Monthly payments shall be made for
ninety (90) per cent of the construction
costs completed as provided by the De-
partment for bidding purposes.
Each proposal must be accompanied
by a surety bond, certified check, or
money to the amount of at least ten
(10) percent of the total amount of
the proposal.
The envelope containing the propo-
sal must be marked "Proposal for
the Construction of State Highway
Contract No. 1957".
The contract will be awarded on
proposals received within thirty (30)
days from the date of opening propo-
sals. The right is reserved to reject
any or all bids.
Plans, Specifications and other con-
tract documents may be obtained from
Pope & Kruse, Architects, Wilmin-
gton, Delaware after November 18, 1959
upon deposit of twenty-five dollars
(\$25.00) for each set.
Checks for deposit shall be made
payable to the Architect, Pope and
Kruse.
The full amount of the deposit on
one set of drawings and specifications
will be refunded to any bidder for
the General Contract upon the return
of the Documents in good condition.
Non-bidders, Sub-contractors, and ma-
terial men will be refunded only Fif-
teen Dollars (\$15.00) upon return of
extra copies of documents obtained.
A complete set of Documents will
be placed on file in the office of the
Chief Engineer of the Delaware State
Highway Department, 133 Millside Drive, P. O. Box
140, and the F. W. Dodge Corporation,
1221 Arch Street, Philadelphia, Penn-
sylvania, for the convenience of sub-
contractors.
The standard prequalification for bid-
ders will be omitted, but bidders must
qualify as set forth in the contract
documents.
DELAWARE STATE HIGHWAY
DEPARTMENT
BY: J. Gordon Smith, Chairman
R. A. Haber, Chief Engineer
November 12, 1959
Dover, Delaware
Nov. 19, 59

Half Billion Sales Volume
Cited For State In 1958

Retail sales volume apparently
is keeping pace with Delaware's
population growth, the Delaware
State Development Department
notes, and Delaware retail estab-
lishments had a total sales volume
in excess of half a billion dollars
in 1958.
Based on its findings on preliminary
reports of the 1958 Census of Busi-
ness just released by the U. S. De-
partment of Commerce, the state
information agency notes that Dela-
ware had 4,526 retail establishments
in 1958, with sales totaling \$568,108,-
000—a volume 15.2 per cent higher
than shown by a survey made in
1954.

Robt. T. Jones
and Son
—
FUNERAL
DIRECTORS
—
PHONE EN 8-1627
122 West Main Street
NEWARK, DELAWARE

WARWICK
FUNERAL HOME
William J. Warwick, Director
121 W. Park Place Phone EN 8-6565

CITY OF NEWARK
Delaware
IMPORTANT NOTICE
To
NEWARK RESIDENTS
NO REFUSE AND GARBAGE WILL BE COLLECTED ON THE
FOLLOWING HOLIDAYS:
Thanksgiving Day, Thursday, Nov. 26, 1959. (The collection
will be made on Wed. Nov. 25, 1959).
Christmas Day, Friday, December 25, 1959. (The collection
will be made on Thursday, Dec. 24, 1959) and Thursdays
collection will be made on Wed., Dec. 23, 1959).
New Years Day, Friday, Jan. 1, 1960. (The collection will
be made on Thursday, Dec. 31, 1959 and Thursday's collec-
tion will be made on Wed., Dec. 30, 1959).
The crews will not be able to return for any items not at the curb
at the time of collection. Thank you for your cooperation.

TURKEYS
Choice—Fresh Dressed
DENNISON BROS.
CE 9-5378 Limestone Road, HOCKESSIN
10-25
POUNDS
DELIVERED



DELAWARE POWER
&
LIGHT COMPANY

Glasgow Resident
Mrs. Ella Brown
Dies At Age Of 92

Mrs. Ella M. Brown, 92, widow
of Frank V. Brown, died Nov. 18
at her home in Glasgow, after an
illness of five days.

A native of Delaware, Mrs. Brown
had lived all her life in the Glas-
gow area. Her husband died about
35 years ago.
Surviving are a daughter, Mrs.
May Brown Leasure, at home; a
brother, T. Bayard Kendall, Wil-
mington; a sister, Mrs. Effie W.
Lindell, Newark, and a number of
nieces and nephews.
Services were held Saturday at
2 p.m. in the funeral parlors of R. T.
Jones, Newark, with interment in
Pencader Cemetery, Glasgow.

DF&L ECONOMICS
In an experiment in adult educa-
tion, Delaware Power & Light Com-
pany is offering its employees a
four-hour discussion course in the
basic workings of the American
economic system.
CITY OF NEWARK
PUBLIC HEARING
Notice
Pursuant to Section 17 of the City
Charter Notice is hereby given of a
Public Hearing at the regular stated
meeting of the Council in the Council
Chambers at 8:00 P.M. E.S.T. Tuesday
November 24, 1959 at which time the
Council will consider for final passage
a proposed ordinance amending the
City Planning Commission Ordinance,
as amended, by Repealing Section 24,
Entitled "PLANNING DEPARTMENT."
Charles D. Long
Secretary of the Council
of the City of Newark
Nov. 12, 1959

Diane Farny Tells Scouts
Of Senior Round-Up Trip

A combined meeting of Girl Scout
Troop 112, with leaders Mrs. Lloyd
Forbes and Mrs. William Kranz, and
Troop 4, led by Mrs. Robert Forbes,
was held at the Presbyterian Parish
House on Monday, when Diane Far-
ny as guest speaker, described her
experiences at Senior Round-Up in
Colorado last summer.

Troop 112 recently enjoyed a
cook-out at the William Kranz home
on New London Road after hiking
to White Clay Creek Road. Part of
their meal consisted of biscuits
which the Scouts baked on sticks
over the fire.

HOUSE HUNTING? . . .
Then, Stop in at Your Friendly
NEWARK REAL ESTATE
and
INSURANCE COMPANY
Academy Street — Brookside Shopping Center
Phones EN 8-3546 or EN 8-3797

needum new skins to charm braves?
you "otter"
get the best
pronto . . .
with a Farmers
TIMEPLAN LOAN

Whether you're planning to trap one brave or attract
many, braves makeum heap bigger play for maiden
who always looks her best. Get a new fur coat, or a
whole outfit made of the white man's cloth. Pay for
your purchases with a convenient Farmers TIMEPLAN
Loan. You'll find repayments to Farmers are easy . . .
figured to fit your budget, and you can have many
moons in which to pay. So, visit your nearest trad-
ing post today. Pick the skins of your choice, then
hit the trail to your nearest Farmers Bank. But
better still, call Mr. Potts at Endicott 8-8546 for
TIMEPLAN information.

| IF YOU BORROW | 24 Mos. | 30 Mos. | 36 Mos. |
|---------------|----------|----------|----------|
| Amount | \$ 23.50 | \$ 23.50 | \$ 23.50 |
| 1,000.00 | 47.19 | 38.89 | 33.36 |
| 1,500.00 | 70.79 | 58.33 | 50.05 |
| 2,000.00 | 94.39 | 77.78 | 66.73 |
| 2,500.00 | 117.98 | 97.22 | 83.41 |

DELAWARE'S
OLDEST BANK
FARMERS BANK
of the
STATE OF DELAWARE
Member Federal Deposit Insurance Corporation

FOUNDED
1807

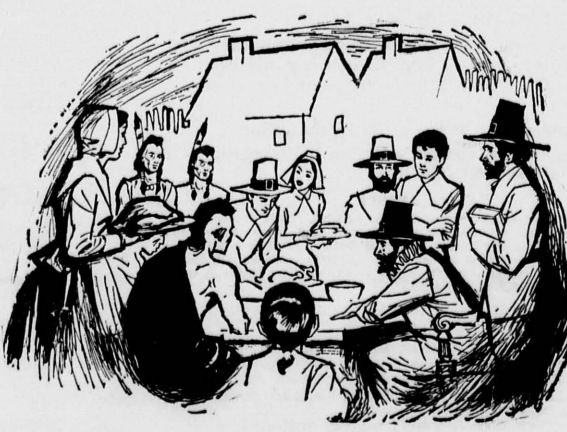
DAGSBORO • DOVER • GEORGETOWN • LAUREL • LEWES
NEWARK • REHOBOTH • SMYRNA • WILMINGTON: 9th & Shipley
3rd & Market (walk-up window), 30th & Market (drive-in)
Wanamaker Store • Facility—Dover Air Force Base

THANKSGIVING

After the cruel New England winter of 1620-21 . . .
after the hopeful planting of springtime and the
anxious toil of summer . . . the miracle of harvest
burst upon Plymouth Colony. Little wonder the
Pilgrims were grateful!

But in the prayers they offered up over their feast
of four wild turkeys that first Thanksgiving Day,
it was not for food alone that the colonists were
grateful. They gave thanks, also, for freedom of
worship, speech and enterprise . . . for freedom of
opportunity in a land where individual effort could
achieve individual reward . . . for freedom from in-
terference in the pursuit of their destiny.

These are the blessings which—marvelously pre-
served for us over more than three centuries—we
are grateful for today.



Honor Roll

(Continued from Page 1)

Jeanie Dalecki, Susan Dearing Patricia Greiss, Gary Griffith, Roger Hall, George Lamplugh, David Muxo, Ted Nutter, and John Thayer.

High school second honor roll scholars include seniors Joan Aneda, Carol Coleman, Lane Casey, Virginia Furness, Bob Handloff, Russ Hawes, Ted Houle, and Richard Sharpe; 11th graders Jonathan Heuberg, Joyce Hutchison, Frazer Jones, Ellen McGlinchey, Roy Peters, Sue Southard, and William Skold, and sophomores Linda Backiel, Margaret Bell, Jean Reinhardt, and Winthrop Smith.

At Central, first honor roll ninth graders include Michael Billingsley, Joanna Dawson, Jane Fletcher, Ann Pooks, Juanita Frasier, Willard Jackson, Barry Jones, and Robert Utley; eighth graders Carol Kearney, Nancy Sobolewski, Susan Amoroso, Richard Davis, Nancy Handly, Barbara Kelsey, Gilmore Ott, Mary Schneider, Stephen Stavrakis, Joanne Thompson, David Tong, Peggy Walton, John Connell, Darlene Baker, Robert Cronin, Sally Mack, Ann Perkins, Nancy Schaal, Judy Smith, Virginia Wilson, Mary Woodmansee, Arlene Adams, Elizabeth Baldwin, Deborah Handloff, Mary Ann Keesey, Marilyn Rush, Michael Walls, Judy Woodward, Michael Wriston, and Elisabeth Young, J. Inman and M. Keeney.

Seventh grade, first honor roll

AUCTION

Held in our bargain room each Wednesday evening, 6:30 to 10:30.
Newark Farm & Home Supply
Opp. Newark Post Office

NEWARK SCHOOL OF MUSIC

Individual Instruction
PIANO—ORGAN
EN 8-2294

ALL LINES OF INSURANCE

Auto—Long Haul Truck
Bonds—Outboard Boats
and Motors
RMAN P. BLACK
EN 8-6181
Phelps Lane, Newark

New York Life Agent

LEE DICKEY



New York Life

INSURANCE COMPANY
Life Insurance, Group Insurance,
Accident & Sickness Insurance,
Employee Pension Plans
PHONE EN 8-2388

GUITAR INSTRUCTIONS

MODERN, CLASSICAL, FLAMENCO Styles

Call EN 8-2294

THANKSGIVING DAY — ONE OF THE MOST REVERED DAYS IN OUR LAND!

Newark has much to be thankful for. Unusual Prosperity, more homes being constructed than ever before, many fine people coming to our Fair City for their future homes. Our efficient city officials have completed most of our city streets and they are beautiful! Our Public Schools are second to none in Delaware.

Our University has completed most of its expansion program, with much more in the offing.

All Highways coming into our City are a credit to any community. Newark's Future is Promising and Bright. . . It's fine to live in a progressive City. . . Let's all be THANKFUL!

Another advance in F.H.A. & G.I. Mortgage rates makes the home we have for sale with G.I. 4 1/2% Mortgage takeovers much more attractive with much larger savings to the purchasers—saving hundreds of dollars in interest.

It will be much to your advantage with savings to come in and get the particulars.

GEORGE READ VILLAGE

One of the most attractive homes there, beautiful condition, new siding, aluminum storm doors and windows; oil heat, fenced yard, private parking, on Bassett Place. Open field in back, close to Senior High School. Ideal location for retired couple or small family.

Either side \$8,000 or you can buy both sides and rent one at \$75.00 per month. Beat the high rent and live at home.

EAST PARK PLACE

Beautiful home, 5-rooms, bath, oil heat, H.W. Floors. Shade trees and shrubbery, nice basement. Aluminum storm doors and windows. In pink of condition. One of Newark's most desirable areas. Close to University and Schools. Only \$14,000.

COLLEGE PARK

Most attractive home in the area, with many extras. 3 bedrooms, parka doors, finished den, garage. Large takeover G.I. Mortgage—4 1/2%. A Real buy at \$10,750.

If you are interested in buying a home or in a lot on which to build, it will pay you to call us before buying.

LAWSON STARCHER, Broker

Delaware, Maryland & Pennsylvania

Phone Newark EN 8-6510

Dwarka Chatterjee Of India Embassy Guest At Newark

The University of Delaware political science department provided a rare treat for students and friends of the university when they presented Dwarka N. Chatterjee, charge d'affaires of the embassy of India in Washington.

Mr. Chatterjee visited classes for two days last week, giving the students a chance to ask questions concerning India—and he graciously answered all questions and was generous with his time and knowledge.

Mr. Chatterjee ended his two-day visit to the campus with a lecture in Brown Laboratory. "India is not a neutralist, but is a non-alignment country. She does not believe in signing military pacts, and has not signed any military pact with any other country."

He pointed out how the background of India, economically, historically, and in religion, has governed their thinking.

Paul McCommons Presides At Farm Bureau Meeting

The regular monthly meeting of the New Castle County Farm Bureau board of directors was held last Monday at Agricultural Hall in Newark.

McCommons announced that the annual membership drive will begin with a kick-off meeting next Wednesday at 8 p.m. in Ag Hall.

Public Sale

REGISTERED GUERNSEY CATTLE
POWER FARM MACHINERY
WEDNESDAY, DEC. 2nd, 1959

In village of Elkton, Pa., 2 miles south of Route 1 on Route 896—4 miles from Oxford, Pa.—4 miles from West Grove, Pa.

SALE at 10:30 A.M. SHARP
43 registered and accredited Guernseys, 1 bull purchased Guernsey, 4 yrs. old, very gentle; 26 milk cows—fresh and close springers and full milk; 16 heifers—(SOME bred, SOME not bred). This is a certified herd and can go anywhere. 2 tractors, 1 Massey-Harris "30" with 2-row cultivator, 1 Massey-Harris "50" (1953), 7 ft. mower for Massey-Harris "30"; tractor, 2 bottom, 14 inch plow for grain drill—10 spouts; Massey-Harris Clipper combine—6 ft. cut; New Holland hand harrow (in good condition); Harry bale elevator—30 ft. 2 rubber tire flat bed wagons—16 ft. Case side-delivery rake, Wood Bros. wheelbarrow, spreader, New Idea manure spreader, 3-section spring-tooth harrow, cultipacker, disc harrow—7 ft. line drill; roller, dump truck, 14-inch Oliver plow, horse hay tedder, 2-horse cultivator, potato plow, 2 left-hand side single cul-tivator (horse), corn sheller, garden tractor, 15 ft. log chain, 40 ft. extension ladder, horse trailer, 2 tractors, 16 ft. shovels and many articles, 2 surge milkers—tubs, cans, strainer, milk cooler, 28 gal. milk can, heater. Clover & Timothy by the ton; wheat and oats by the bushel. Other articles too numerous to mention to be sold. Terms: Cash.

JOHN A. PUGH, Owner
Ortup and Hill Auctioneers
R. R. Whitelock & Sons
Ladies of Kembleville Church will serve lunch.

CITY OF NEWARK

CONTRACT NO. BW-59-11
FOR THE CONSTRUCTION OF
WELL PUMPS, WELL PUMP HOUSES
AND WATER MAINS

Sealed proposals for the construction of Well Pumps, Well Pump Houses and Water Mains under Contract No. BW-59-11, on Putnam Swamp Road, just south of Chestnut Hill Road, in the vicinity of the City of Newark, Delaware will be received at the office of the Mayor and City Council of Newark, Delaware until 4:00 P.M. Eastern Standard Time on December 1, 1959 at which time and place they will be publicly opened and read.

Included in this work is the installation of three (3) deep well pumps and approximately 2750 feet of 6" cast iron water main with fittings and electrical work.

Copies of the plans, proposal form, specifications and other contract documents may be obtained by prospective bidders upon application to Mr. J. F. Neide, City Manager, City Hall, Newark, Delaware, at a cost of \$10.00. This amount will not be refunded.

All proposals sent by mail must be accompanied by a certified check or bid bond in the amount of 10 percent of the total of the proposal, payable to the Mayor and the City Council, Newark, Delaware, and unless so accompanied, will not be considered.

Bids when filed shall be irrevocable. The right is reserved to reject any or all proposals as the interests of the City of Newark may require.

Bond in the amount of the contract price will be required of the successful bidder.

Mayor and City Council
Newark, Delaware
Nov. 26, 1959

Sophomore Class Elects—Ted Nutter As President

The sophomore class at Newark High School has elected officers with President Ted Nutter; Vice-President Ken Williamson; Linda Morrison, secretary; and Don Keister, treasurer.

Sophomore class advisors are Grant Ewell and Edward J. Davis.

Dolan, Levy Court To Feature Forum For Newark LWV

Professor Paul Dolan of the political science department at the University of Delaware; two members of the Levy Court, and the budget commissioner for New Castle County will take part in an open forum on county government next Monday at the new County Engineering Building on Kirkwood Highway.

There will be a guided tour of the facilities at 7:30 and the panel discussion will begin at 8 p.m.

The meeting is under the auspices of the League of Women Voters of Newark and Wilmington, and Mrs. Samuel Handloff of Newark, president of the League of Women Voters of Delaware, will be the moderator.

Joseph F. Dayton, president of the Levy Court, Harry H. Lambert, a Levy Court commissioner, Walter Norbet, budget commissioner, Dr. Dolan, Mrs. Robert F. Jackson of Newark, and Mrs. C. W. Theobald of Wilmington will take part in the panel discussion.

"We hope for large attendance by the general public, for this meeting will deal with matters which affect all residents of New Castle County. This is a chance to have some of our questions answered," Mrs. William Markell, chairman of the league committee in Newark said.

Members of Mrs. Markell's committee include Mrs. C. C. Braunschweiger, Mrs. P. S. Buckley, Mrs. David Chaplin, Mrs. John Eldridge, Mrs. Carl Hornberger, Mrs. C. K. Norris, Mrs. Morton Rothstein, Mrs. Horace Sawin and Mrs. George Wilson.

Boys, Girls State Representatives Feature Assembly

At the high school's recent weekly assembly, Newark's representatives to Girls' and Boys' State last June underscored the idea of learning through participation in government affairs.

Brenda Freed and Kanny Burke represented Newark at Girls' State, and Boys' State representatives were Ted Houle and Sam Allison.

The assembly was conducted by Mrs. DuVal Cleaves, who explained the purpose of these two model government sessions—to enable students to know and to participate in the form and function of state government.

Newark's representatives are elected each year by the junior class from a list of students presented by the faculty.

Bronnie Mills conducted opening exercises.

Dances Scheduled Friday, Saturday For Youth Groups

Andrea Lanier, Saturday Night Dance youth committee chairman, has announced plans for the Thanksgiving Turkey Trot this Saturday.

A date affair, the dance will feature several novelty dances. The youth committee will run the dance with Sam Burke and Susan Dearing playing records, and Andrea Lanier and Gary Reichard on floor duty at the New Century Club from 8 to 12 for high school-age students living in the Newark area.

On Friday at the West Park Place School, the junior teen-age set will have a Thanksgiving dance from 7:30 to 10:30 p.m., an extra 30 minutes over the regular time.

Youth committees from Central and Oglethorpe Junior High Schools are active in the planning of the Friday night dance program which is open to all junior high-age students living in the Newark area.

Both activities are sponsored by the Newark Recreation Association.

KELLS AVENUE

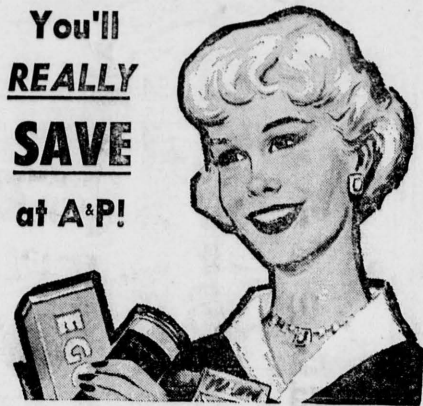
One of the most attractive locations in Newark, 100-ft. front, 150-ft. deep with hedge all around. Large pine trees and other shade and shrubbery. Cape Cod dwelling, 3 bedrooms, bath, L.R. D.R. & kitchen, full size high, dry cemented basement with outside entrance. Oil heat, large front porch, garage, ameislar drive. Good condition inside & out. FOR QUICK SALE only \$14,500.

RENTALS

RANCHER—Augusta Drive, Chestnut Hill Est. Beautiful lawn, and in excellent condition \$100.00
BROOKSIDE RANCH—Section C—Excellent condition \$90.00
CAPITOL TRAIL—Lumbrook. Beautiful bungalow, 2-car garage, brick fireplace. Nov. 25th \$90.00
BIRCHWOOD PARK—New furnished home, with Washer, Dryer, Refrigerator \$100.00
BEAUTIFUL RANCHER—4 bedrooms, 2 baths, 1 1/2 Acres. 2-car garage. A show place \$130.00
BINNS HOME—In beautiful condition, 4 bedrooms, 2 baths, oil hot water heat, full basement \$100.00
CAPITOL TRAIL—Delaplane Manor. 1st Floor Apt. 2 BR, living room with fireplace. Heat and water furnished \$75.00

All A&P Super Markets are OPEN FRIDAYS To 10 P.M.

You'll
REALLY
SAVE
at A&P!



"Super-Right" Quality, Cut From Corn-Fed, Light Weight Porkers . . .

PORK ROASTS

| Rib End Roast—7-Rib Cut | Loin End Roast |
|------------------------------|------------------------------|
| Average Weight 3 to 4 Pounds | Average Weight 3 to 4 Pounds |
| 25¢ lb. | 35¢ lb. |

| Rib End Sliced | Full Rib Half | Full Loin Half | Loin End Sliced |
|----------------|---------------|----------------|-----------------|
| lb. 29¢ | lb. 37¢ | lb. 47¢ | lb. 39¢ |

Center Cut Pork Chops or Roasts
A&P Apple Sauce
Fresh Ground Beef

| | | | | | |
|--------------------------------|--------------|--------------|---------|-------------|---------|
| Rib Roasts | Standing Rib | 10-inch cuts | lb. 55¢ | 7-inch cuts | lb. 65¢ |
| Chipped, Cubed or Swiss Steaks | | | lb. 99¢ | | |
| Boneless Round Steaks | | | lb. 99¢ | | |
| Medium Size Shrimp | | | lb. 55¢ | 5 lb. box | \$2.69 |

California Iceberg
FRESH SOUTHERN
CORN
Florida Large Seedless, 56 Size

| | |
|---------------|----------------------|
| LETTUCE | (None Priced Higher) |
| 2 large heads | 29¢ |
| CORN | (None Priced Higher) |
| 6 ears | 29¢ |

GRAPEFRUIT
A&P Frozen Orange Juice
A&P Frozen Peas
A&P Frozen Sliced Strawberries

| | | | | |
|--------------------------------|---------------|-----|---------------|-----|
| A&P Frozen Orange Juice | 2 12-oz. cans | 75¢ | 4 6-oz. cans | 79¢ |
| A&P Frozen Peas | | | 6 10-oz. pgs. | 79¢ |
| A&P Frozen Sliced Strawberries | | | 2 10-oz. pgs. | 37¢ |

Orange Juice
Tomatoes, Peas or Corn
A&P Grapefruit Sections
Sultana Fancy Rice
Nabisco or Keebler Saltines
Campbell's Beans
Ann Page Tomato Soup
Mel-O-Bit Cheese Slices
Jane Parker Apple Pie
Jane Parker Donuts

| | | | | | |
|-----------------------------|---------------------------------|-------------------|-----|-------------------|--------|
| Orange Juice | Cypress Gardens Brand—Sweetened | 4 18-oz. cans | 59¢ | 3 46-oz. cans | \$1.00 |
| Tomatoes, Peas or Corn | | | | 4 16-oz. cans | 45¢ |
| A&P Grapefruit Sections | | | | 6 16-oz. cans | 95¢ |
| Sultana Fancy Rice | | | | 1-lb. pkg. | 14¢ |
| Nabisco or Keebler Saltines | | | | 2-lb. pkg. | 27¢ |
| Campbell's Beans | Also Sunshine Krissy Crackers | 3 16-oz. cans | 38¢ | 1-lb. box | 25¢ |
| Ann Page Tomato Soup | | | | 2 21-oz. cans | 33¢ |
| Mel-O-Bit Cheese Slices | | | | 6 10 1/2-oz. cans | 59¢ |
| Jane Parker Apple Pie | American, Swiss or Pimento | 2 8-oz. pkgs. | 49¢ | | |
| Jane Parker Donuts | Special Price! | large 8-inch size | 39¢ | | |
| | Plain, Sugared or Cinnamon | pkg. of 12 | 19¢ | | |

CRISPO COOKIES
Vanilla Wafers, Oatmeal, Orange or Card Party

CRESTMONT ICE CREAM
Continuing this Special Sale through Saturday!
1/2-gallon container 69¢

A&P Super Markets
1859 AMERICA'S DEPENDABLE FOOD MERCHANT 1959

All Prices in This Advertisement are Effective Friday and Saturday, Nov. 27th and 28th