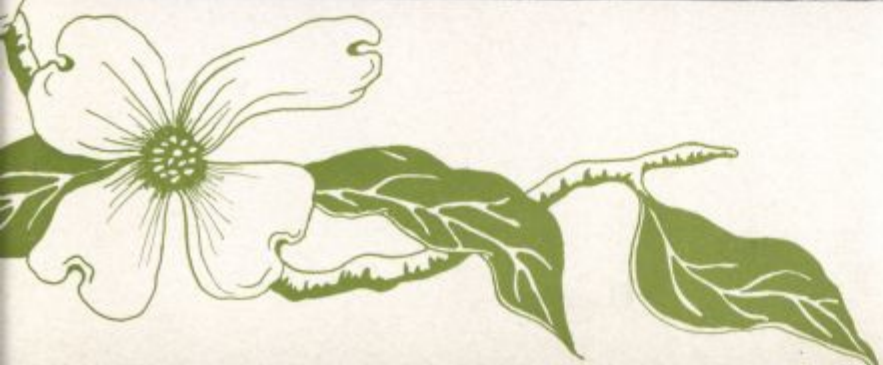
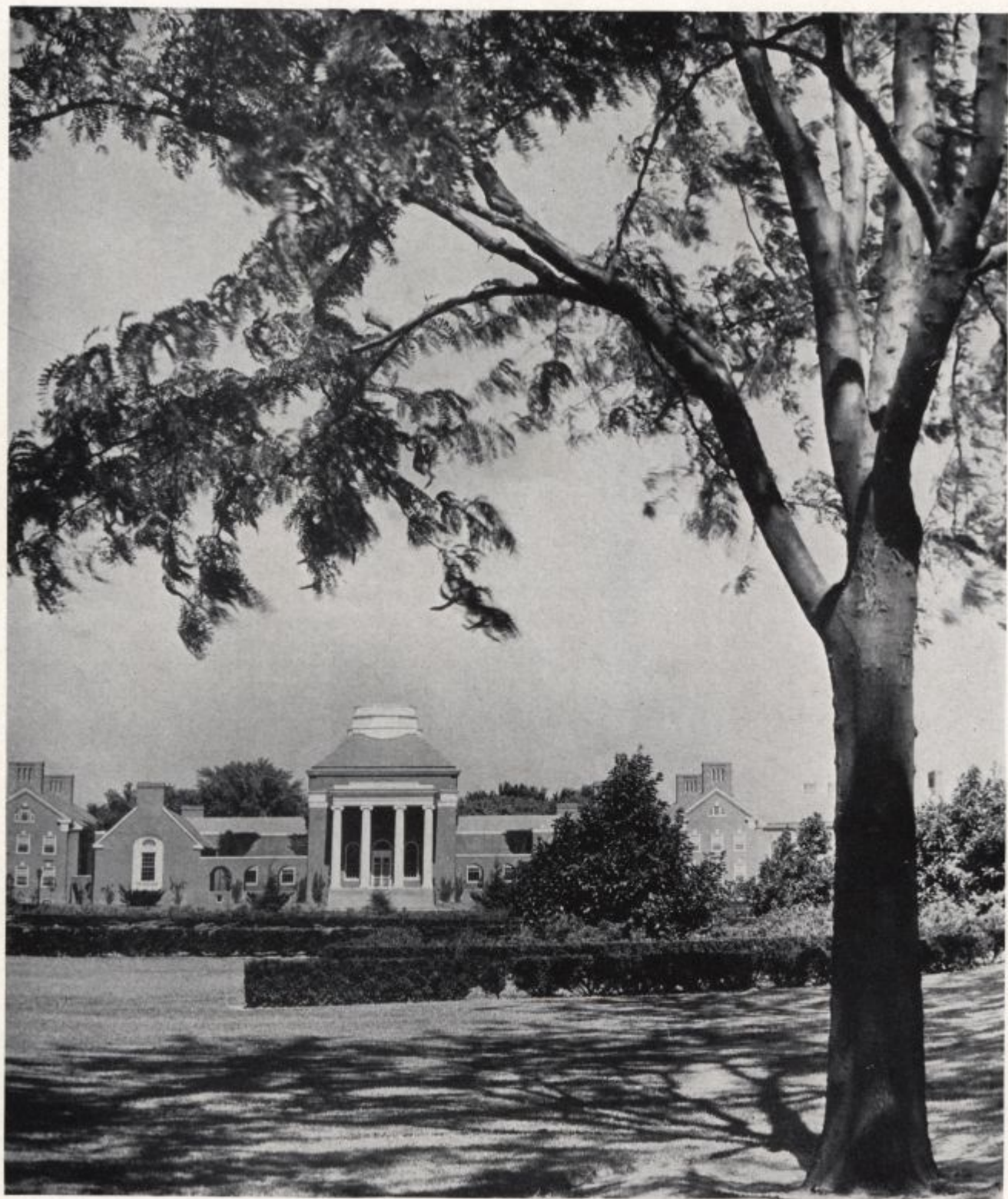




Spring

. . . Rains have a new meaning and the wind is not so sharp . . . it plays along the walks and tosses the fresh greenness of the trees and of the grasses . . . Just beyond the campus and the closed-in classrooms live the woods and the creek that runs beside them . . . Class attendance is less than in the months before . . . and there is study on the lawns and in the woods along the creek . . . But work must be completed . . . and reports and practice teaching . . . and a yearbook must be published . . . Officers are elected for another year and there is a final play in Mitchell Hall . . . With May there comes a queen and the gym classes perform . . . Soon examinations are over . . . It's June . . . and the seniors change the tassels to the left of their black mortar boards . . .





Senior Dignity



A young man's fancy ---



8 o'clock ?



Between Classes



Mail !



Traditional Ivy



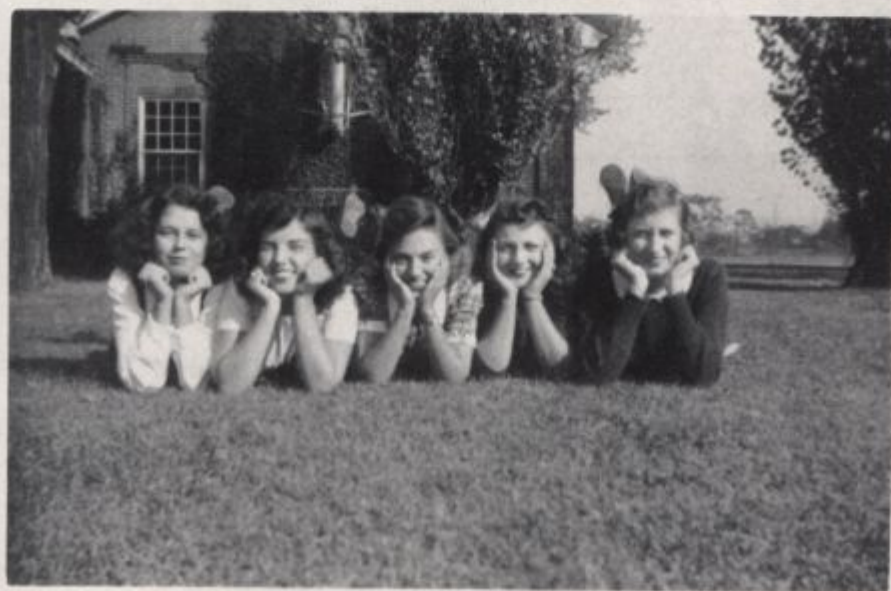
B 132



Art and University Hall



\$15 a month



Posers



Dramatics

Fall . . . the end of summer, and freshmen start worrying and looking forward to freshman week . . . the E52's within shouting distance of each other gather around to think up some subtle way to introduce the freshmen to the wonders of Mitchell Hall, dramatic center of the University of Delaware . . . not a place, but an institution in itself . . . dramatics: where you learn responsibility, dependence, independence, and interdependence, how to make friends and influence people, and pick up some of the knowledge that they never put in books . . . dramatics: the field of give and take, where there is no salary, and no report card . . . Registration Day for dramatics . . . it seems as if everyone in college wants to do make-up, stage designing, scene painting, off-stage effects, publicity, directing, or acting . . . try-outs for the first big play of the year, the 3-act of the Fall . . . hectic period of rehearsals and tests and rehearsals and tests . . . a grand performance . . .

Winter . . . try-outs for the Playbill with its two 1-act plays . . . a hunt for new faces, and new people to try their hands at old jobs . . . Playbill . . . the beautiful Christmas play, sponsored by the Puppets, given the night of the Women's College Christmas dinner, in conjunction with the music department . . . after Christmas, plans for the Competitives get under way . . . each class hopefully elects a director to champion it . . . each director hopefully chooses a cast and a play . . . and the fight is on . . . the four casts go around acting in dark corners, in Common Rooms, in the lounge of Robinson Hall . . . then, one rehearsal



and a dress rehearsal in Mitchell Hall and the performances . . . there's that awful waiting while the judges make up their minds, and then the announcement is made and the proud director steps forth and grins while the audience applauds . . . for a few days one class is outstanding, supreme . . . but then the big play of the winter looms before the college, and the talent which has been divided for the Competitives is united to make this 3-act play another successful achievement for the Delaware dramatics.

Spring . . . it becomes harder to hold even the most enthusiastic people indoors . . . there is another Playbill, more experimentation . . . the E52's hold a meeting and look at the staff apprentices'



records . . . who will step into whose shoes, is she dependable, does she have ideas, will she do her job well, is her scholastic record high enough, does she have enough credits to become an E52? . . . she is given her big chance on the staff for the final 3-act play of the year (if she meets all the tests, she will be made head of a staff for the next year) . . . the final play . . . the Seniors' last chance . . . and then the E52's hold their last meeting and elect their new officers and arrange their organization for the year that will begin the next fall . . . Mitchell Hall remains the same . . . it is only the people who flow through it that are different . . . their footsteps have not worn the stone steps much . . .

ANNALS: 1940-1941

Love's Old Sweet Song . . . Air Raid . . . Queens of France . . . the Christmas play, sponsored by the Puppets . . . the Competitives: first prize won by the Juniors (Jane Hastings Sinclair directing Virginia Evans and Dorothy Thompson in *Manikin* and *Minikin*) . . . *Candida* . . . *She Was Only a Farmer's Daughter* . . . *Flight to the West*.

ANNALS: 1941-1942

Jim Dandy, with Kay Guinard and Jane Hastings Sinclair in the leads . . . *Riders to the Sea* . . . first act of *The Importance of Being Ernest*, with Betty McFalls and Ruthann Tease as the ladies . . . *The Male Animal*.



CROWNING OF THE QUEEN IN MAY, 1941

May Day

Spring . . . and May Day . . . the day the old grads come back and get together . . . the day reigned over by the loveliest girl in the Senior class . . . the day on which the efforts of the whole Physical Education department culminate . . . the day it almost always rains . . .

The sun rises . . . by eight o'clock the lawn at the side of the gym is teeming with the decorating committee, telling the workmen where to put this and that platform . . . there is the sound of tacking as the throne is covered . . . chairs and pillows are snatched from the dorms . . . all morning the decorating goes on . . . by noon the benches are

all up and the scene is set . . . then comes the photographer and with him the make-up artists and the costume committee . . . from noon until 2:15 group pictures are snapped outside the gym . . . everybody in the show runs around in her bare feet and everybody else runs around after her or after the court, to make sure that everything is going to run smoothly . . . 2:15, the benches are full as the line of performers twists around from behind the building and moves into place to await the entrance of the court . . . the heralds blow their horns and the court walks slowly down the circular steps from the second floor of the gym



Reigning Over the 1942 Festivities . . .
Doris Jolls

. . . there is a breath-taking moment when the court pauses and forms a picture just before the appearance of the Queen . . .

The Queen! Slowly she walks around the circle made by the benches, followed by the applause of her subjects . . . she reaches her throne and ascends . . . May Day has begun . . .

Then there is the May Day tea . . . old grads, new grads, and under-grads meet again . . . and the May Day dance, with the court beauties in their official costumes of the day . . . May Day dies a beautiful death . . . but Spring has come to the campus . . .

ALLEGORY . . .

Harriette von der Leith, Jeannette Trice, and Doris Armbruster interpreting autumn, winter and spring.



PAGENTRY . . .

Irvana Passmore, Charlotte Tatnall, Miriam Lewis, Doris Armbruster, and Betty Hyland as circus performers.



Junior Prom 1941

When it comes to the Junior Prom of 1941, we'll be like elephants, we'll never forget . . . the perfectly wild snowstorm with the cars wading into Wilmington to the Hotel duPont and with the cars wading back to Newark at the hopeless hour of 3:30 A. M. and most of them getting beautifully stranded in a snowbank . . . the perfect swing tempos of Bunny Berrigan's orchestra . . . the sophisticated white and blue leather programs . . . the galaxy of orchids . . . all sizes, numbers, and colors, and oh, so lovely . . . and the ever-present receiving line headed by our class president, Anne Clayton, and her escort and ended by the senior class president, Anne Harrison, and her escort. It's difficult to decide which was more fun, our Freshman Formal or our Prom, but it's a sure-fire fact both of them are occasions we wouldn't give up for a cargo of "you name it", but please . . . no more snowstorms.

Because of our blustery prom of '41, the 1942 Juniors decided to play safe and planned their prom for April, with blossoms and soft breezes for atmosphere.



THE FINAL TOUCH



JUNIOR PROM COMMITTEE . . . 1942



ON WITH THE DANCE! LET JOY BE UNCONFINED.

Class of 1943

1939-40

Freshman Week . . . bewilderment . . . flowers in the rose garden which we weren't allowed to cut . . . receiving our Freshman insignia . . . "green horrors" around our heads . . . learning to sign in and to sign out . . . and also forgetting . . . the thrills and disillusionments of blind dates . . . receiving our class colors . . . our first exams . . . Spring vacation . . . then finals . . . would we make it, or wouldn't we? We did!

1940-41

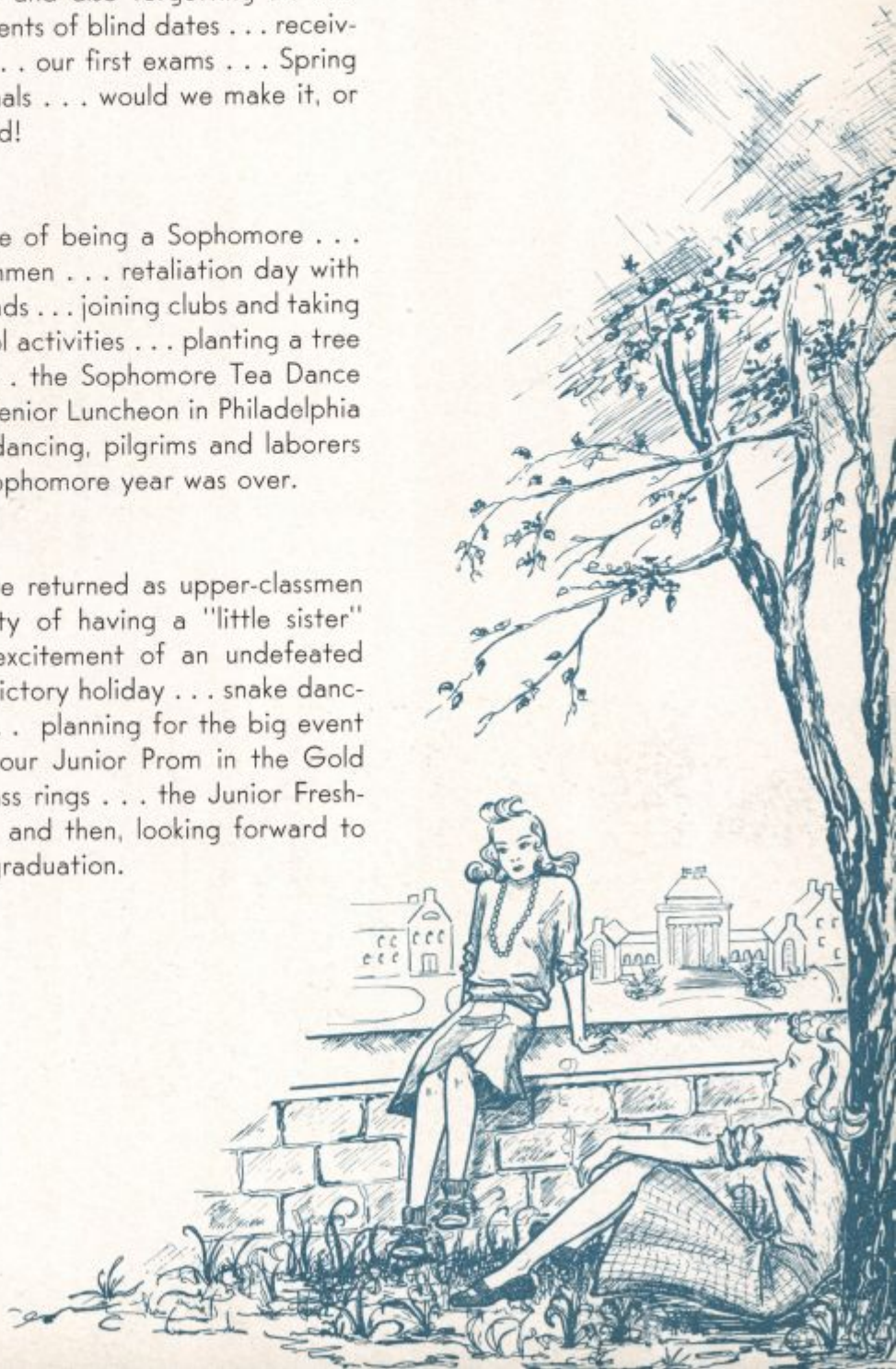
The added prestige of being a Sophomore . . . bringing up the Freshmen . . . retaliation day with towels around our heads . . . joining clubs and taking a larger part in school activities . . . planting a tree on Founder's Day . . . the Sophomore Tea Dance . . . the Sophomore-Senior Luncheon in Philadelphia . . . May Day: flag dancing, pilgrims and laborers . . . June, and our Sophomore year was over.

1941-42

September, and we returned as upper-classmen . . . the responsibility of having a "little sister" . . . the thrill and excitement of an undefeated football season . . . victory holiday . . . snake dancing and the bonfire . . . planning for the big event of the Junior year, our Junior Prom in the Gold Ballroom . . . our class rings . . . the Junior Freshman Tea Dance . . . and then, looking forward to our Senior year and graduation.

1942-43

. . . all to come.



DOROTHY MARIE BETZ

"Dot"

West Orange, New Jersey

Home Economics . . . Foods

Home Economics Club, 1, 2, 3; Treasurer of Home Economics Club, 2; Social Chairman of Y. W. C. A., 3; Dramatics, Costumes, 1.



MARTHA ELIZABETH BRANDRIFF

"Marty"

Newfield, New Jersey

Home Economics . . . Clothing

Class Vice President, 3; W. A. A. Vice President, 3; W. A. A. Active Member, 1, 2, 3; Outing Club President, 3; Home Economics Club, 1, 2, 3.



NANCY ESTHER BROWN

Newark, Delaware

Arts and Science . . . English

Secretary and Treasurer of Art Club, 3; Treasurer of Press Club, 3; Chairman of Libraries, 3.



SELMA ROBINA CAHAN

Wilmington, Delaware

Arts and Science . . . Biology

Dramatics, Costumes, 1; Orchestra, 1.

BETTY JANE CAREY
"B. J."

Laurel, Delaware

Home Economics . . . Education

Y. W. C. A. Secretary, 3; Supper Club
Chairman, 3; W. A. A., 1, 2, 3; Class Man-
ager of Hockey, 3.

HELEN ANNE CHABY

Wilmington, Delaware

Home Economics . . . Education

Home Economics Club, 1, 2, 3.



FLORENCE RUTH COBB

Port Norris, N. J.

Arts and Science . . . History

Economics Club, 3; Y. W. C. A., 3.
Transfer from Houghton College

MILDRED STEELMAN DAVIS

Newark, Delaware

Arts and Science . . . Biology

Glee Club, 1, 2; Choir.



JANE DRISCOLL
 Wilmington, Delaware
 Home Economics . . . Clothing
 Home Economics Club, 1, 2, 3; Non-resi-
 dent Representative of Y. W. C. A., 3.

ESTELLE DORRIT EDMONDSON
 "Kewpie"
 Smyrna, Delaware
 Arts and Science . . . English
 Chairman of Freshman Formal; Y.W.C.A.,
 1, 2, 3; Treasurer of Y. W. C. A., 2; Class
 President, 3; Class Secretary, 2; Forum
 Cabinet, 3; Press Club, 3; Literary Staff of
 Cauldron, 3; Blue and Gold Staff, 3; Head
 Waitress of Dining Hall, 3; W. A. A., 1, 2.



SARAH HUBBARD ELIASON
 "Mandy"
 New Castle, Delaware
 Arts and Science . . . Social Science
 Transfer from Bradford Junior College

MARY VIRGINIA ELLIOTT
 "Ginny"
 Laurel, Delaware
 Arts and Science . . . English
 W. A. A., 1, 2, 3; Forum Cabinet, 3; Lit-
 erary Staff of Cauldron, 3; Class Treasurer,
 3; Chairman of Sophomore-Senior Tea, 2.

BETTY LEIGH ELLIS

Delmar, Delaware

Education . . . Elementary Education
Glee Club, 1.

YVONNE ETZEL

"Bonnie"

Newark, Delaware

Arts and Science . . . Art
Art Club, 3.



LENA WEGGENMAN FLEMING

New Castle, Delaware

Arts and Science . . . Chemistry
Science Club, 1, 2, 3; Math Club, 1, 2, 3.



MARY KATHERINE GRAY

"Kay"

Frederica, Delaware

Education . . . Elementary Education
Choir, 1, 2, 3; Glee Club, 1, 2; Music Club
Publicity Manager, 2; Music Club Treas-
urer, 3; Radio Guild, 3.

MARJORIE GREENBAUM
 "Margie"
 Seaford, Delaware
 Arts and Science . . . Social Science
 Y. W. C. A., 2.



JEANNE MARIE HARKINS
 "Jeannie"
 Wilmington, Delaware
 Arts and Science . . . Economics
 Forum Cabinet, 2, 3; Forum Cabinet President, 3; Class President, 2; Freshman Sub-captain; Math Club; Economics Club; Blue and Gold Staff, 3; Newman Club Secretary; Dramatics — Make-up Committee; Publicity Committee.



BETTY FRANCES HEARNE
 "Harry"
 Delmar, Delaware
 Education . . . Physical Education
 W. A. A. Secretary, 3; Class Manager of Basketball; Class Treasurer, 2.

NORMA VINCENT HOLLIS
 "Snick"
 Milford, Delaware
 Home Economics . . . Education
 Class Treasurer, 1; Home Economics Club, 1, 2, 3; Home Economics Club Vice President, 3; Y. W. C. A. Publicity Chairman; Business Manager of Blue and Gold, 3.



HELEN EVELINA KAISER

Wilmington, Delaware

Arts and Science . . . Biology

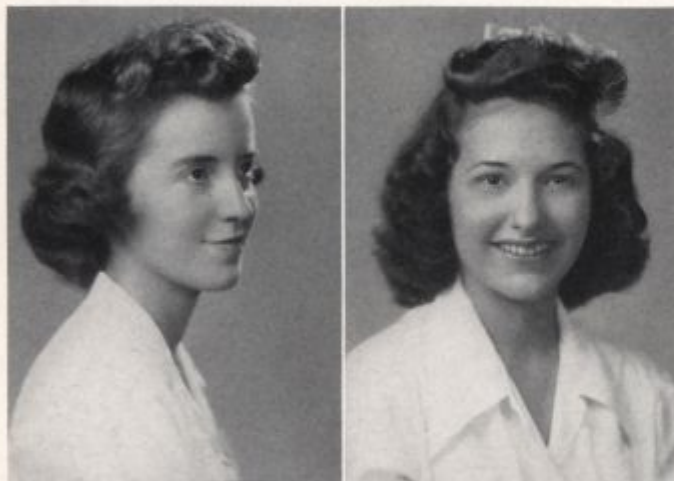
Freshman Athletic Representative; Social Committee, 2, 3; Y. W. C. A., 1, 2, 3; Y. W. C. A. Vice President, 3; E-52 Players; Puppets; Blue and Gold Staff, 3; Junior Prom Committee.

KATHRYN MARIE KANE

Wilmington, Delaware

Arts and Science . . . Mathematics

Math Club, 2, 3; Newman Club.



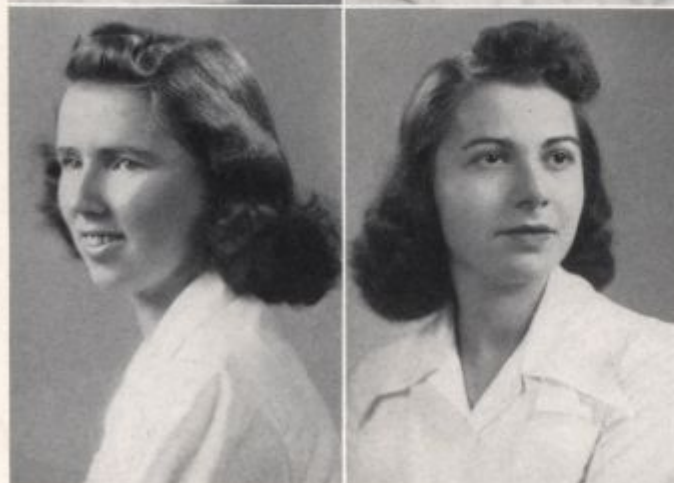
MARYANNA KIEFFER

"Mak"

Llanerch, Pennsylvania

Arts and Science . . . Art

Choir, 1, 2, 3; Art Club President, 3; Radio Guild, 3; Blue and Gold Staff, 3; May Court, 1, 2.



ROSALIND ETHEL KRINSKY

Wilmington, Delaware

Arts and Science . . . History

EDITH RUTH KUSHNER
 Wilmington, Delaware
 Arts and Science . . . Social Science
 Radio Guild, 3.



ELEANOR BISHOP LUPTON
 "Luppy"
 Wilmington, Delaware
 Arts and Science . . . Economics
 Class Vice President, 2; Secretary of Student Council, 3; Secretary of Economics Club, 3; Class Manager of Soccer, 1; Chairman of Junior Prom, 3; Blue and Gold Staff, 3.



MARTHA JANE LYNAM
 "Jane"
 Wilmington, Delaware
 Education . . . Elementary Education
 Chairman of Supper Club, 3; Treasurer of Student Council, 3; W. A. A., 1, 2, 3; Glee Club, 1, 2; Blue and Gold Staff, 3.



MARY INEZ LYNCH
 "Inez"
 Wilmington, Delaware
 Arts and Science . . . Social Science
 Newman Club Vice President, 3.

GLADYS LURANA MAI

"Glad"

Lewes, Delaware

Education . . . Elementary Education
Glee Club, 1, 2.

ANNE-MARIE-YVONNE MAX

Casablanca, Morocco

Arts and Science . . . Social Science
Transfer from University of Paris



MARY ELISABETH McFALLS

"Betty"

Wilmington, Delaware

Arts and Science . . . Latin
Cauldron Staff, 3; Blue and Gold Staff, 3;
Radio Guild, 3.

DORIS GEORGE McILVAINE

Magnolia, Delaware

Arts and Science . . . Mathematics
Math Club, 1, 2, 3.

VIVIAN McMULLEN
"Bibs"

Newark, Delaware

Arts and Science . . . Mathematics
Math Club, 1, 2, 3; Corresponding Secretary, 2.



HARRIETT RUTH McNEMAR
Stanton, Delaware

Education . . . Elementary Education
Glee Club, 1, 2.



WINIFRED NANCY MILLER
"Winnie"

Cranford, New Jersey

Arts and Science . . . History
Y. W. C. A.; W. A. A.

MILDRED ANN MORRISON
Marshallton, Delaware

Arts and Science . . . French
French Club Treasurer, 3.



MARJORIE ANNE NORTON
 Wilmington, Delaware
 Arts and Science . . . Social Science
 Forum Cabinet, 2, 3.

HELEN PACHIDES
 Rehoboth Beach, Delaware
 Home Economics . . . Clothing
 Home Economics Club, 2, 3.
 Transfer from Madison College



BETTY JO PAINTER
 Yeadon, Pennsylvania
 Home Economics . . . Clothing
 Home Economics Club, 1, 2, 3; Social
 Committee, 3; Blue and Gold Staff, 3.



VIRGINIA RAMSDELL
 "Jimby"
 Oakmont, Upper Darby, Pennsylvania
 Arts and Science . . . Social Science
 Transfer from Bradford Junior College

CATHERINE DORIS RANKIN
 Merchantville, New Jersey
 Education . . . English
 Choir, 3; Chorus, 1, 2.



PAULINE LOUISE ROORBACH
 "Polly"
 Cape May Court House, New Jersey
 Home Economics . . . Clothing
 Home Economics Club, 3; W. A. A., 3.



EVELYN ANN ROSEN
 Wilmington, Delaware
 Arts and Science
 Radio Guild Publicity Committee, 3.



BARBARA LOUISE ROTHROCK
 "Rocky"
 Kenvil, New Jersey
 Arts and Science . . . Chemistry
 Y. W. C. A., 2, 3; German Club, 1; Science
 Club, 1; Math Club, 1; Glee Club, 1, 2;
 Music Club, 1, 2; W. A. A., 1.

MARIE GENEVIEVE ROTTMUND

Coatesville, Pennsylvania

Home Economics . . . Clothing

Home Economics Club, 1, 2, 3.

LOUZETTA CLOWER SCHAFER

"Lou"

Wilmington, Delaware

Arts and Science . . . History

Freshman Formal Committee; Student Council, 3; Chairman of Recreation for Non-residents; Economics Club, 3; Blue and Gold Staff, 3.

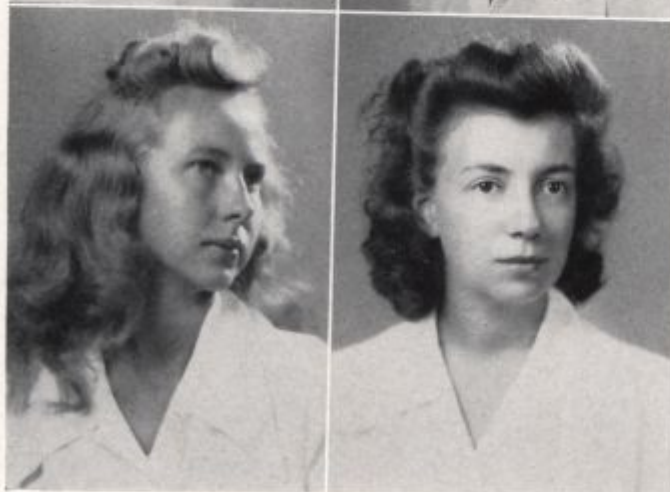


SARA CATHERINE SHORT

Georgetown, Delaware

Home Economics . . . Education

Home Economics Club, 1, 2, 3; Secretary of Home Economics Club, 2; W. A. A., 1, 2, 3; Student Head of House, 3.



MARCELLE MARIE SKINNER

Newark, Delaware

Arts and Science . . . Music

Choir, 1, 2, 3; Music Club Vice President, 3.

VIRGINIA CONSTANCE STEVENS
 "Jinny"
 Hillside, New Jersey
 Home Economics . . . Clothing
 Home Economics Club, 3.
 Transfer from Tusculum College

MARIAN LOUISE STITES
 "Mike"
 Chester Springs, Pennsylvania
 Arts and Science . . . Biology
 W. A. A., 1, 2; Student Head of House, 3.



DOROTHY MAE SWARTZ
 "Dottie"
 Pitman, New Jersey
 Arts and Science . . . Social Science



ARRIA JEANETTE TRICE
 "Jay"
 Wilmington, Delaware
 Arts and Science . . . Art
 Freshman Formal Committee; May Court,
 1, 2; Social Committee, 1, 2; Blue and
 Gold Staff, 3.

VIRGINIA ANN TULL

"Ginny Ann"

Farmington, Delaware

Home Economics . . . Education

W. A. A., 1, 2, 3; Home Economics Club,
1, 2, 3; Y. W. C. A. Publicity Chairman, 2;
Y. W. C. A. President, 3.

HARRIETTE VON DER LIETH

"Hattie"

Glen Rock, New Jersey

Home Economics . . . Foods

Home Economics Club, 2, 3; May Court, 2;
Junior Prom Committee, 3.



BETTY WAHL

Wilmington, Delaware

Arts and Science . . . Biology

Science Club, 1, 2; Science Club Secretary,
2; German Club, 1, 2.



ALICE ISABEL WARD

Plainfield, New Jersey

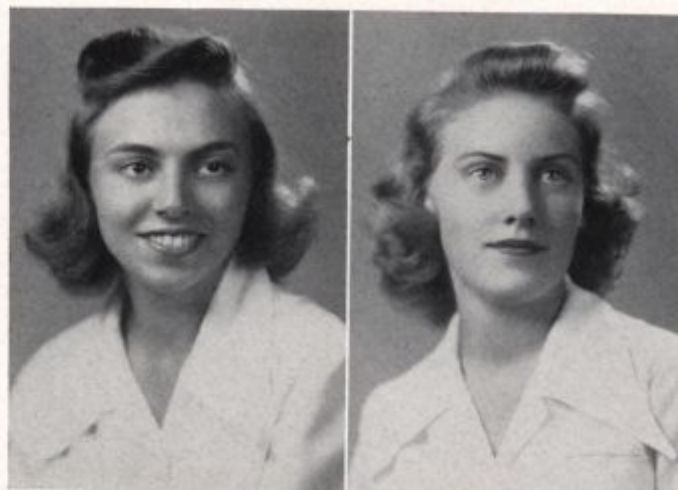
Arts and Science . . . Chemistry

Math Club, 1, 2, 3; Math Club Secretary,
2; Math Club Vice President, 3; Science
Club, 1, 2, 3; Science Club Treasurer, 2;
Press Club, 1, 2, 3; Press Club Treasurer,
2; Press Club Vice President, 3; Forum, 2,
3; Forum Secretary, 3; Choir, 1, 2, 3;
Blue and Gold Staff, 3; Cauldron Staff, 2, 3;
Cauldron Literary Staff, 2; Cauldron Copy
Editor, 3; Music Club, 2.

ELIZABETH WHITAKER
"Lib"

Swarthmore, Pennsylvania

Arts and Science . . . Social Science
W. A. A., 1, 2, 3; Soccer Class Manager,
2; Hockey Class Manager, 3; Economics
Club, 3; Co-chairman of Ring Committee,
3.



JEAN LOUISE WILEY

Wilmington, Delaware

Education . . . Physical Education
W. A. A., 1, 2, 3.



HELEN SHAW WILSON
"Shaw"

Lewes, Delaware

Education . . . Elementary Education
Social Committee, 3; Class Secretary, 3;
Glee Club, 1, 2; May Day Committee, 2;
Dramatics—Publicity Committee, 3; Make-
up Committee, 2, 3; Music Club, 1, 2.

ETHEL MARGUERITE WILSON
"Marge"

New York, New York

Education . . . Elementary Education
Glee Club, 1, 2; Science Club, 1; Fresh-
man Formal Program Committee; Econom-
ics Club, 3; Music Club, 1, 3; Y. W. C. A.



MARY LOU WILSON
"Lulu"

Cape May, New Jersey
Arts and Science . . . Social Science

CHARLOTTE VIRGINIA WORTH
Landenberg, Pennsylvania

Education . . . Elementary Education
Glee Club, 1, 2.



YETTA JOSEPHINE ZUTZ
Wilmington, Delaware

Education . . . History and Social Science

WINIFRED LENDERMAN
"Wini"

Radford, Virginia
Home Economics . . . Clothing
Home Economics Club, 3; Y. W. C. A., 3.
Transfer from Mary Washington College

W. C. Defense

December 7, 1941, and Women's College stepped in and began defense work. Through the plans created and carried out by Anne Hardesty and Jean Ramsey, first aid courses and ideas of a prospective motor corps took shape and arrangements were made so that the college girls could help make surgical dressings at the Newark Red Cross unit. On campus, Marian McCormack took charge of knitting, and saw that the skeins of wool were handed out and that the finished goods went to the distribution centers. A Red Cross first aid manual is now one of the most important textbooks on anyone's shelf, and no one sits down to chat or smoke without a familiar knitting bag full of maroon, green, or brown wool.

At top left are Anne Hardesty and Jean Ramsey, working on surgical dressings. The pictures at center and bottom left show the results of three weeks of two-hour first aid classes, while below are Marian McCormack holding a knitting-bee in her room, and underclassmen adding more surgical dressings to an ever-increasing boxful.



Class of 1942

1938-39

A new class to meet a new dean . . . to begin together . . . in rain and the damp drizzling coldness of a freshman week . . . a college experience . . .

1939-40

The routine life of a sophomore . . . along with special events . . . planting a tree . . . luncheon for the seniors in Philadelphia . . . care of a freshman class . . . settling down to work in a major course . . .

1940-41

Recognized upperclassmen with "little sisters" . . . extra-curricular offices and extra-curricular duties . . . work more serious . . . time more important . . . winners of competitiveness in Mitchell Hall . . . junior prom with snow and ice . . . elections and plans for the senior year . . .

1941-42

Arrival . . . and all its dignities and honors . . . Founder's Day and vows in cap and gown . . . seminars and practice teaching . . . interviews and jobs . . . engagements and marriages . . . nostalgia in the spring . . . time too short . . . June, and caps and gowns again . . . Graduation for Dean Golder's first class . . .



JEAN ANNE ALLEN

"Bonnie"

Bridgeville, Delaware

Education . . . Home Economics

Secretary of Class, 2; Chairman of Hall of Social Committee, 3; Secretary of Home Economics Club, 3; Treasurer of Social Committee, 4; President of Home Economics Club, 4.

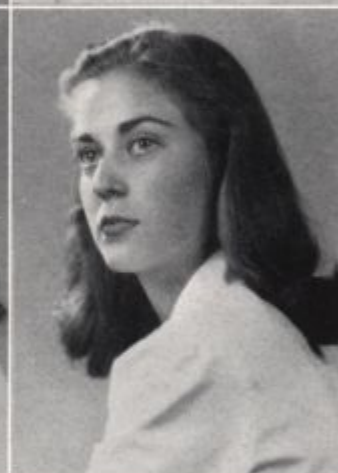


JANET BALSTER

Wilmington, Delaware

Arts and Science . . . Art

Freshman Class President, 1; Social Committee, 2, 3, 4; May Court, 1, 2, 3, 4; Art Club.



ELIZABETH JANE BETTS

"Betty"

Richardson Park, Delaware

Arts and Science . . . Chemistry

Science Club, Vice-President, 4; W. A. A.

HARRIET HUGHES BOONE

"Boonie"

Newark, Delaware

Arts and Science . . . Social Science

Assistant on Staff of Blue and Gold, 2; May Day Program, 2; Chairman of Junior Prom, 3.



VERDA BRAEMER
Wilmington, Delaware

Home Economics . . . Foods

W. A. A., 2, 3, 4; W. A. A. Vice President, 3; Outing Club President, 3; Class Secretary, 3; Science Club, 3, 4; Home Economics Club, 2, 3, 4; Assistant Chairman May Day Committee, 3.

JEAN GRAY BRITTINGHAM

"Jeannie"

Newark, Maryland

Education . . . Home Economics

Home Economics Club, 1, 2, 3, 4; Outing Club; Y. W. C. A.



EMILY BUDD

"Buddie"

Wilmington, Delaware

Elementary Education

University Choir, 1, 2; Glee Club, 1, 2; Music Club, 1, 2; Y. W. C. A., 3, 4; W. A. A., 1, 2, 3, 4; Chairman of Ring Committee, 3.



RUTH CAREY BYRAM

"Ruthie"

Wilmington, Delaware

Arts and Science . . . English

W. A. A., 1, 2; E-52 Scenery Staff; Play Selecting Committee; Blue and Gold Advertising Committee, 4.

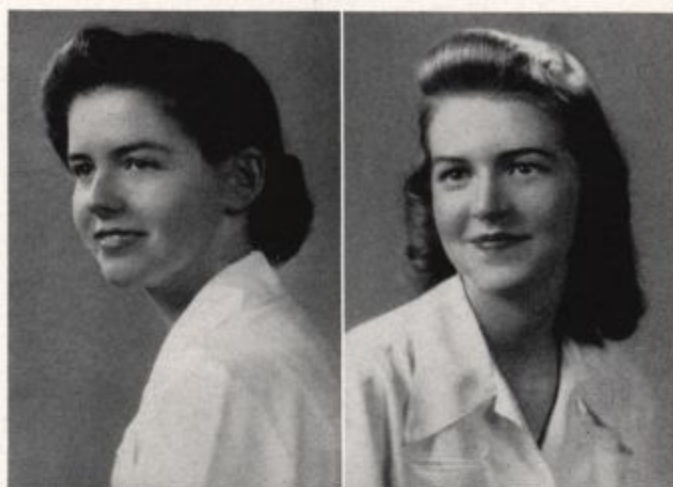
DOROTHY ELIZABETH CANN

"Dottie"

West Chester, Pennsylvania

Arts and Science . . . History

French Club, 1, 2, 3, 4; Y. W. C. A., 1, 2, 3, 4; Chairman of Discussion, 4; Forum, 3, 4; Music Club, 1.



MARILYN EMILY CLARK

"Clarkie"

Doylestown, Pennsylvania

Arts and Science . . . History

W. A. A., 2, 3; E-52 Players, 3, 4.



ANNE INGRAM CLAYTON

Glen Mills, Pennsylvania

Education . . . Home Economics

Home Economics Club, 1, 2, 3, 4; Treasurer, 2; Vice President, 3; President of Class, 3; Vice President of Class, 2; Costumes for May Day, 3; Co-chairman Home Economics Open House, 3; Y. W. C. A., 1, 2.



MARGARET PROVOST COOPER

"Peg"

Aberdeen, Maryland

Arts and Science . . . History

BETTY ANNA CROSSAN

"Bessie"

Wilmington, Delaware

Home Economics . . . Clothing

Home Economics Club, 2, 3, 4; Ticket
Chairman of Junior Prom Committee, 3;
Chairman of National Defense Commit-
tee, 3.

BEVERLY BRIGHT DAVIS

"Bevie"

Drexel Hill, Pennsylvania

Education . . . Elementary Education

E-52 Players, 3, 4; Puppets, 3, 4; Radio
Guild, 3, 4; Business Manager E-52 Players,
3; Membership Chairman E-52 Players, 4.



JANE EVELYN DENNISON

"Janey"

Yorklyn, Delaware

Home Economics . . . Home Economics
Home Economics Club, 1, 2, 3, 4.



MARY ELEANOR DURNEY

"Mary"

Wilmington, Delaware

Home Economics

Home Economics Club, 1, 2, 3, 4; Junior
Prom Committee, 3; Open House, 3.

DOROTHY IDELLA EAGLESON
"Dotty"

Rehoboth, Delaware

Arts and Science . . . Mathematics
Science Club, 1, 2, 3, 4; Mathematics Club,
1, 2, 3, 4; Chairman of Teas, 3; Secretary
and Treasurer, 4; Chairman of Junior Prom,
3.



VIRGINIA RALSTON EVANS
"Ginny"

Newark, Delaware

Home Economics . . . Foods
Chairman of Freshman Formal, 1; Mem-
ber of E-52, 3, 4; Member of Puppets Club,
3, 4; Secretary and Treasurer Puppets
Club, 4; Chairman of University of Dela-
ware Dramatic Conference, 4; Home Eco-
nomics Club, 1, 2, 3, 4; Literary Staff Mem-
ber of Blue and Gold, 4; Play Selecting
Committee, 4.



SARAH LOUISE FEENEY
"Sally"

Wilmington, Delaware

Arts and Science . . . English

Chairman of Recreation for Non-Residents,
2, 3; Press Club, 3, 4; Chairman of Non-
Residents, 4; Business Manager of Caul-
dron, 3, 4; Advertising Staff, Blue and
Gold, 4; Business Manager of May Day
Committee, 2, 3.



MARGARET GENE FELTON
"Miggie"

Madison, New Jersey

Education . . . Elementary Education

Poetry Club, 1, 2; Book Club, 2; Forum,
2, 3, 4; Music Club, 1, 2, 3; Glee Club, 1,
2, 3; E-52 Players, 2, 3, 4; Puppets, 3, 4;
Director of Play Selecting and Casting
Committee, 4.

ELLEN MARJORIE FOSTER

Newark, Delaware

Arts and Science . . . Art

Class Treasurer, 1; Art Club, French Club.

ANNA KATHERINE FRANCKOWSKA

Wilmington, Delaware

Arts and Science . . . English

German Club, Secretary and Treasurer, 3;
French Club, 3, 4; Press Club, 3, 4; President, 4.



GRACE VIRGINIA FRENCH

"Ginny"

Rutherford, New Jersey

Arts and Science . . . Art

W. A. A.; Freshman representative, 1; Secretary, 2; Art Club, 1, 2, 3, 4; Secretary, 3; Student Council, 4; Social Committee, 2, 3, 4; Chairman, 4; Make-up Committee for E-52 Players, 1, 2, 3, 4.

SHIRLEY EASTWOOD FULLER

"Sherry"

Hillside, New Jersey

Education . . . Home Economics

Home Economics Club, 1, 2, 3, 4; Dramatics, 1, 2, 3; Y. W. C. A., 3, 4.

DORIS MABLE GIBNEY
"Gib"

Claymont, Delaware

Arts and Science . . . Mathematics

Class President, 2; Class Treasurer, 3; Mathematics Club, 1, 2, 3, 4; Vice President, 3; President, 4; Student Council, 3, 4; Outing Club, 3; Y. W. C. A., 2; Economics Club, 4; Glee Club, 2, 3; University Choir.



NANCY LEE GREEN
Easton, Pennsylvania

Arts and Science . . . Music

Music Club, 1, 2, 3, 4; Secretary and Treasurer, 3; President, 4; Choir, 2, 3, 4.



IRENE ELIZABETH GREGORY
"Greg"

Wilmington, Delaware

Arts and Science . . . English

Civilian Pilot Training, 3, 4; Program Committee for Junior Prom; Advertising Staff, Blue and Gold; W. A. A., 1, 4.



MILDRED GRACE HANK
"Hankie"

Richardson Park, Delaware

Arts and Science . . . Chemistry

W. A. A., 1, 2, 3, 4; Secretary of Science Club, 3; President Science Club, 4.

ANNE AMELIA HARDESTY

"Annie"

Seaford, Delaware

Arts and Science . . . English

Dramatics—Scenery, Make-up, Acting, 3;
Junior Prom Committee, 3; Associate Editor,
Blue and Gold, 4; Economics Club;
Co-chairman of Red Cross Work.

ANNA HAYES

Newark, Delaware

Arts and Science . . . History

Secretary of Class, 1; Secretary, Treasurer
of Non-residents on Student Council; Non-
resident Representative of Y. W. C. A.;
Secretary of Student Council, 3; President
of Student Council, 4; Red Cross Committee.



ALICE MAY HAZELTON

"Punkin"

Edge Moor, Delaware

Arts and Science . . . Latin
Science Club.

PATRICIA YOUNGS HENDERSON

"Pattie"

Upper Darby, Pennsylvania

Arts and Science . . . Economics
Secretary of French Club, 3; President of
French Club, 4; Secretary of Class, 4.

DORIS MINERVA HERDMAN
Dover, Delaware

Home Economics . . . Clothing
Co-chairman of Home Economics, Open House, 3; Junior Prom Committee, 3; Home Economics Club, 1, 2, 3, 4; Costumes for May Day, 3; Blue and Gold Staff, 4.



CHRISTINE STERICKER HUSHEBECK
"M.C."

Swarthmore, Pennsylvania
Arts and Science . . . French
French Club, 3, 4; German Club, 4; Music Club, 3; Y. W. C. A., 1, 2, 3.



ADA WELLS JOHNSON
"Johnny"

Baltimore, Maryland
Education . . . Elementary Education
Vice President of Class, 4; Glee Club, 1, 2, 3; Art Club, 3, 4; Music Club, 1, 2, 3; May Court, 1, 2.



DORIS LEE JOLLS
"Dorrie"

Fort duPont, Delaware
Arts and Science . . . History
Vice President of Class, 1; Duchess of May Court, 1, 2, 3; Chairman of Make-up Committee of E-52, 4; Secretary of E-52 Players, 4.

GWINNETT HOPKINS JONES

"Gwinny"

Scarsdale, New York

Arts and Science . . . Social Science

Y. W. C. A., 1, 2, 3, 4; W. A. A., 1, 2, 3, 4; Secretary of Radio Guild, 3, 4; Vice President of Outing Club, 3; Literary Board of Blue and Gold, 4; Poetry Editor of Cauldron, 3; Managing Editor of Cauldron, 4; Press Club, 4.

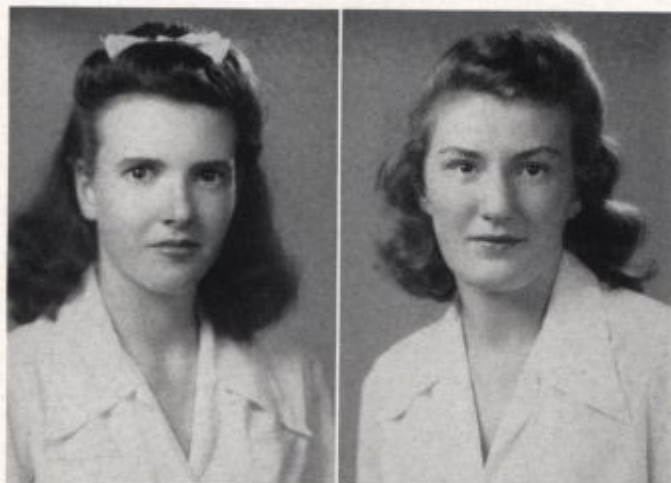


RUTH MAY KRAYER

Yardville, New Jersey

Arts and Science . . . French

French Club, 2, 3, 4; Y. W. C. A., 3; Forum



SARAH VERA LAPPLE

"Sally"

Wilmington, Delaware

Home Economics . . . Clothing

Home Economics Club, 1, 2, 3, 4; Member of Junior Prom Committee, 3; Committee for Open House, 3.



MIRIAM EDITH LEVINSON

Bayside, Long Island, N. Y.

Arts and Science . . . French

French Club.

PHYLLIS SUZANNE LOFINK
 "Phil"
 Wilmington, Delaware
 Education . . . Home Economics
 Home Economics Club.

ELIZABETH JANE LUMLEY
 "E. Jane"
 Wilmington, Delaware
 Arts and Science . . . Social Science
 Radio Guild; Literary Board of Cauldron,
 3, 4.



REJANE MacINTOSH
 Haddonfield, New Jersey
 Arts and Science . . . Social Science
 Swimming, 2, 3, 4; Archery, 4; French
 Club, 4; Economics Club, 4; Music Club,
 2; Assistant Student Head of Residence, 4.

MARIAN LOUISE McCORMACK
 "Mac"
 Slingerland, New York
 Home Economics . . . Food
 Y. W. C. A., 1, 2, 3, 4; Home Economics
 Club, 1, 2, 3, 4; Assistant Business Manager
 of Blue and Gold, 4; Outing Club; Chair-
 man of Red Cross Knitting.



ELISABETH SHERWOOD McGEE

"Bettie"

Roanoke, Virginia

Education . . . Elementary Education

Treasurer of Class, 2; Y. W. C. A., 2, 3, 4;
Cabinet, 2; Student Council, 3, 4; Vice
President of Student Council, 4; Social
Committee, 3, 4; Glee Club, 2, 3; Art
Club, 2, 3, 4; Music Club, 2, 3.

CAROLYN ELIZABETH MILLER

"Carol"

Drexel Hill, Pennsylvania

Arts and Science . . . Chemistry

Choir, 1, 2, 3; Dramatic—Acting, 3, 4;
Chemistry Club, 4.

Transfer from Valparaiso University



DOROTHY OLIVE MILLER

"Dot"

Wilmington, Delaware

Education . . . Elementary Education

Forum Cabinet, 4; Archery, 4; Glee Club,
3, 4.

MARGARET GOFF NOTHNAGLE

"Nothy"

Chester, Pennsylvania

Home Economics . . . Food

Y. W. C. A., 1, 2, 3, 4; Committee—Ves-
pers, 3; Ways and Means, 2; Home Eco-
nomics Club.

RUTH ANNE O'DANIEL

"Anne"

Newark, Delaware

Arts and Science . . . English

President of Puppets Club, 4; Vice President of E-52 Players, 4; Editor of Cauldron, 4; Literary Editor of Blue and Gold, 4; Press Club, 3, 4; Co-chairman of Lighting, E-52 Players, 3; Copy Editor of Cauldron, 3.

Transfer from Stephens Jr. College

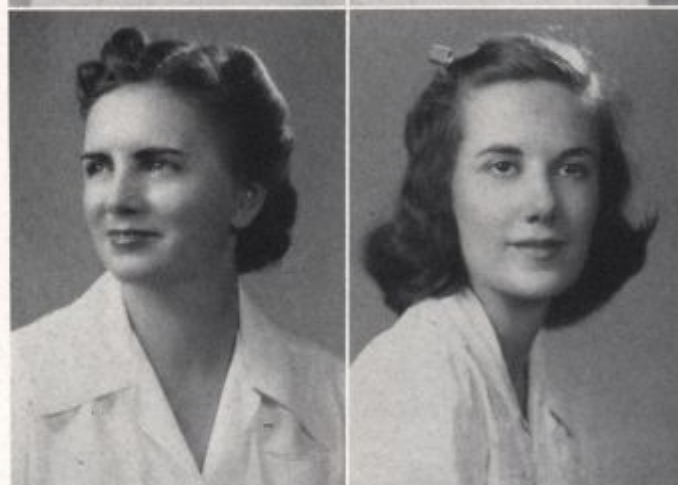


MILDRED COPENHAVEN PATTERSON

"Mil"

New Castle, Delaware

Education . . . Elementary Education



BARBARA PLUMLINE

Newport, Delaware

Education . . . Physical Education

Treasurer of W. A. A., 2; Secretary of W. A. A., 3; French Club, 3, 4; President of W. A. A., 4; Treasurer of Class, 4.



ANITA JEAN RAMSEY

"Jean"

Wilmington, Delaware

Arts and Science . . . English

Home Economics Club, 1; Hockey, 1; Music Committee, 3; Co-chairman of Red Cross Work.

MARY ROYAL

Georgetown, Delaware

Home Economics . . . Foods

Y. W. C. A., 3, 4; Home Economics Club,
3, 4; Outing Club, 3.

Transfer from University of Maine

MARY ELLEN SHAKESPEARE

"Shakie"

Hockessin, Delaware

Arts and Science

Y. W. C. A., 1, 2, 3, 4; Treasurer of
Y. W. C. A., 2; Secretary of Y. W. C. A.,
3; Co-chairman of Property Staff of E-52,
4.



ANNE SHOE

Wilmington, Delaware

Arts and Science . . . Economics

Transfer from University of Alabama

JANE HASTINGS SINCLAIR

Newark, Delaware

Arts and Science . . . English

Captain of Class, 1; Puppets, 2, 3, 4; E-52
Players, 2, 3, 4; President of E-52 Players,
4; Chairman of Publicity for E-52 Players,
3; Music Club, 3, 4; Press Club, 3, 4; Asso-
ciate Editor of Cauldron, 4; Literary Staff
of Blue and Gold, 4.



JANE ELIZABETH SINCOCK
 "Jane"
 Wilmington, Delaware
 Education . . . Elementary Education



CHARLOTTE MILDRED SIPPLE
 "Snuffey"
 Felton, Delaware
 Education . . . Home Economics
 Prompting, 1, 3; Chairman of Prompting
 Committee, 3; E-52 Players, 3, 4; Puppets
 Club, 3, 4; Radio Guild, 3, 4; Home Eco-
 nomics Club, 1, 2, 3, 4; Y. W. C. A., 2,
 3, 4; W. A. A., 1, 2, 3, 4.



KATHERINE ELIZABETH SPICER
 "Kay"
 Greenwood, Delaware
 Arts and Science . . . Chemistry
 Science Club, 2, 3, 4; German Club, 2, 3;
 Math Club, 1, 2, 3; Art Club, 4; Press
 Club, 4; Outing Club, 2, 3.



JANE ELIZABETH STEPHENS
 "Steve"
 Elkton, Maryland
 Home Economics . . . Clothing
 Chairman of Costume Committees of E-52
 Players, 3; Home Economics Club, 2, 3, 4.
 Transfer from Beaver College

GENE AUDREY STEPHEY

"Steff"

Wilmington, Delaware

Arts and Science . . . Chemistry

Freshman Formal Committee, 1; Mathematics Club, 1, 2; Science Club, 1, 4; Blue and Gold Typist, 4; Cauldron Typist, 3, 4.

MARY JEAN STURGIS

"Jean"

Delmar, Delaware

Education . . . Elementary Education

Class Vice President, 3; Forum Cabinet, 3, 4; Vice President of Forum, 4; Editor of Blue and Gold, 4; Staff of Blue and Gold, 2; Glee Club, 2, 3; Y. W. C. A.—Cabinet President, 3; Athletic Association, 2; Art Club, 3, 4.



DOROTHY EMMA THOMPSON

"Dottie"

Richardson Park, Delaware

Education . . . Elementary Education

Dramatics, 1, 2, 3, 4; Make-up, 3, 4; Acting, 1, 2, 3, 4; E-52 Players, 4; Radio Guild; Program Committee of Junior Prom; University Choir, 2, 3.

SERENA ERYLENE WEGGENMANN

"Serena"

New Castle, Delaware

Arts and Science . . . French

French Club, 2, 3, 4; Treasurer, 3; Secretary, 4.



In loving memory of
MARJORIE WAY SWEETMAN
Class of 1942

Class of 1943

Betz, Dorothy M.
Brandriff, Martha E.
Brown, Nancy E.
Cahan, Selma R.
Carey, Betty Jane
Chaby, Helen A.
Cobb, Florence R.
Davis, Mildred S.
Driscoll, Jane
Edmondson, Estelle D.
Eliason, Sarah H.
Elliott, Mary Virginia
Ellis, Betty L.
Etzel, Yvonne
Fleming, Lena W.
Gray, Mary Katherine
Greenabaum, Marjorie
Harkins, Jeanne M.
Hearne, Betty F.
Hollis, Norma V.
Kaiser, Helen E.
Kane, Kathryn M.
Kieffer, Maryanna
Krinsky, Rosaline E.
Kushner, Edith R.
Lenderman, Winifred
Lupton, Eleanor B.
Lynam, M. Jane
Lynch, M. Inez
Mai, Gladys L.
Max, Anne-Marie
McFalls, M. Elizabeth
McIlvaine, Doris G.
McMullen, Vivian
McNemar, Harriett R.
Miller, Winifred N.
Morrison, Mildred A.
Norton, Marjorie A.
Painter, Betty Jo
Ramsdell, Virginia
Rankin, Catherine D.
Roorbach, Pauline L.
Rosen, Evelyn A.
Rothrock, Barbara L.
Rottmund, Marie G.
Schafer, Louzetta C.
Short, Sara C.
Skinner, Marcelle M.
Stevens, Virginia C.
Stites, Marian L.
Swartz, Dorothy M.
Trice, Jeannette A.*
Tull, Virginia A.
von der Lieth, Harriette
Wahl, Betty
Ward, Alice I.
Whitaker, Elizabeth
Wiley, Jean L.
Wilson, Helen S.
Wilson, Marguerite E.
Wilson, Mary Lou
Worth, C. Virginia
Zutz, Yetta J.

* Mrs. John W. McDowell

Class of 1942

Allen, Jean A.
Balster, Janet M.
Betts, Elizabeth J.
Boone, Harriet H.
Braemer, Verda
Brittingham, Jean G.
Budd, Emily
Byram, Ruth C.
Cann, Dorothy*
Clarke, Marilyn E.
Clayton, Anne I.
Crossan, Betty A.
Davis, Beverly B.
Dennison, Jane E.
Durney, Mary E.
Eagleson, Dorothy I.
Evans, Virginia R.
Feeney, Sarah L.
Felton, Margaret G.
Foster, Ellen M.
Franczkowska, Anna K.
French, G. Virginia
Fuller, Shirley E.
Gibney, Doris M.
Green, Nancy Lee
Gregory, Irene E.
Hank, Mildred G.
Hardesty, Anne A.
Hayes, Anna
†Hazelton, Alice May
Henderson, Patricia Y.
Herdman, Doris M.
Hushebeck, M. Christine Stericker
Johnson, Ada W.
Jolls, Doris L.
Jones, Gwinnett H.
Kreyer, Ruth M.
Lapple, Sarah Vernon
‡Levinson, Miriam E.
Lofink, Phyllis S.
Lumley, E. Jane
MacIntosh, Rejane
McCormack, Marian L.
McGee, Elisabeth S.
Miller, Carolyn E.
Miller, Dorothy O.
Nothnagle, Margaret G.
O'Daniel, R. Anne
Patterson, Mildred Copenhaver
Plumline, Barbara
Ramsey, A. Jean
Royal, Mary A.
Shakespeare, Mary E.
Shoe, Anne E.
Sinclair, R. Jane Hastings
Sincok, Jane E.
Sipple, Charlotte M.
Spicer, Katherine E.
Stephens, Jane E.
Stephey, Gene A.
Sturgis, Mary Jean
Thompson, Dorothy E.
Weggenmann, Serena E.

* Mrs. William Hopkins

† Mrs. Harold Rhinehart

‡ Mrs. Harry Ershler

Acknowledgments

An editor and her staff alone would find the task of producing a yearbook almost an impossibility if it were not for the interest and cooperation of other people. To Miss Edith McDougale we wish to acknowledge our deep appreciation for the advice and assistance which she was always willing to give. To Miss Jane Gardner appreciation is also extended for her helpful criticisms about plaids for our cover and about art work in general. The staff wishes to thank Miss Anna De Armond for her assistance with literary copy.

Aside from our faculty advisers, our thanks go to Mr. Coleman Bye of Mercantile Press, Incorporated for his many hurried trips to the college in response to our phone-calls and for his technical advice; to Mr. Harry Hollander of Hollander and Feldman, Photographers, for his sincere desire to see our yearbook be a better one than ever before and for his exceptionally fine work in photographing our campus; to Mr. Edward Leber of Jahn and Ollier Engraving Company for his efforts to help us make the much-needed deadlines.

To the seven executives of the staff go the editor's thanks: to Anne Hardesty for always having time to see people; to Norma Hollis for being the ever-dependable business manager; to Jeanne Harkins for the many hours and much energy spent in securing advertisements; to Verda Braemer for her constant help and efficiency long after completing her work as photography editor; to Jeannette Trice McDowell and Maryanna Kieffer for supervising the art work and for contributing their own artistic talents; and to Anne O'Daniel for her constant interest in the progress of the yearbook.

The editor, finally, expresses her appreciation to all members of the yearbook staff and to others who assisted the staff in many ways.

ELECTRICAL NEEDS OF QUALITY

G. E. Appliances

Lighting Fixtures

Construction Work

Electrical Supplies



GARRETT, MILLER & CO.

N. E. Cor. Fourth and Orange Sts.

Wilmington 3-4221

Jas. T. Mullin & Sons, Inc.

6th and Market Wilmington

The Family's Fashion Store

MILLARD F. DAVIS, INC.

Bits of Personal Jewellery that Are Different in Design and Attractive in Price.

813 MARKET STREET

WILMINGTON

DELAWARE

GEORGE CARSON BOYD

FLOWERS

Phone 3-4388

216 West Tenth Street
Wilmington, Del.

Compliments of

WALT POIRER'S RESTAURANTS

QUALITY FOODS

303 Delaware Avenue 1207 Union Street
Wilmington, Del.

NEWARK LUMBER COMPANY

BUILDING MATERIALS - FUELS

DU PONT PAINTS

Newark

Delaware

Compliments of

CONTINENTAL-DIAMOND FIBRE CO.

NEWARK

DELAWARE

For Portraits of Distinction

Visit the

DAVIS STUDIOS

WEDDING and PORTRAIT PHOTOGRAPHERS

10th and Market Streets

Rooms 304-6-8-9

Phone 3-5384

FADER'S BAKERY

FADER'S QUALITY BREAD

Cakes - Pies - Downy Flake Donuts

Favors - Tallies - Greeting Cards

Dial 2984

Newark, Delaware

HELEN M. WOLLASTON

GOWNS and SPORTSWEAR

300 West Ninth Street

Wilmington, Delaware

Compliments of
DELAWARE MOTOR CLUB

Du Pont Building



WILMINGTON

DELAWARE

Compliments of

THE JUNIOR CLASS



GAS AND ELECTRICITY
Are Your Cheapest Servants

USE THEM

DELAWARE POWER AND LIGHT COMPANY

HOLLANDER & FELDMAN

The Official Photographers for 1942-1943 Yearbook



1705 CHESTNUT STREET

PHILADELPHIA

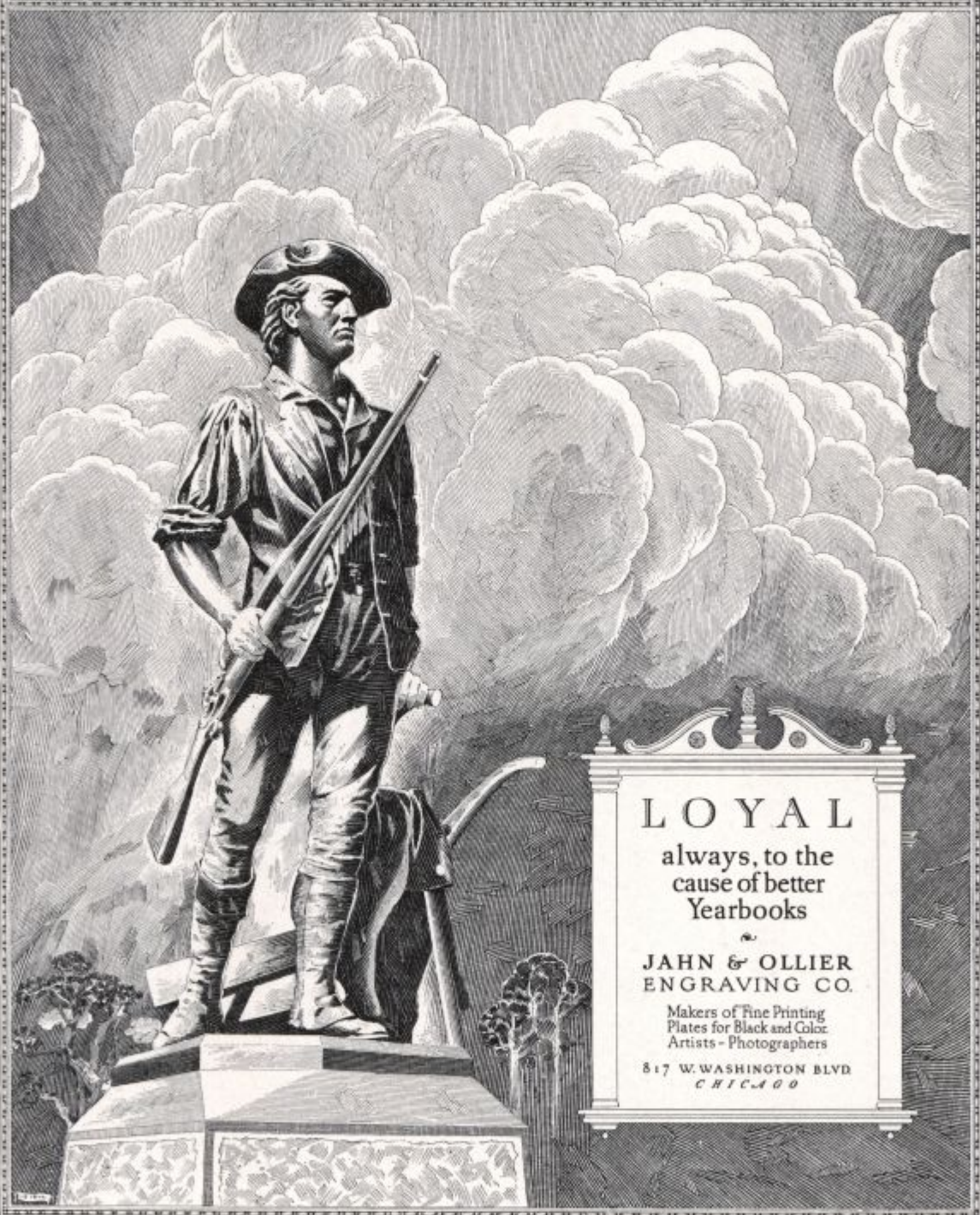


The Mercantile Press, Incorporated

411 EAST FRONT STREET - WILMINGTON, DELAWARE

TELEPHONE WILMINGTON 4-2471

"JAHN & OLLIER AGAIN"



LOYAL

always, to the
cause of better
Yearbooks

JAHN & OLLIER
ENGRAVING CO.

Makers of Fine Printing
Plates for Black and Color
Artists - Photographers

817 W. WASHINGTON BLVD
CHICAGO

Congratulations of
THE ALUMNAE ASSOCIATION

THE NEWARK CHAPTER
and
THE WILMINGTON CHAPTER

A Future Welcome to the Association

GEWEHR PIANO CO.

"The House that Music Built"

RADIO — PIANO — RECORDS

212 W. Ninth Street

Wilmington

YOUR FAVORITE CLASSICS

The dashing casuals you choose at Braunstein's are
lasting loves because they're of lasting quality.

Braunstein's
THE FASHION CAPITAL
OF DELAWARE

Compliments-of

THE SOMERSET CHEMICAL COMPANY

Bernardsbyrr, N. J.

H. W. VANDEVER COMPANY

GENERAL ATHLETIC EQUIPMENT

903 Shipley Street

Wilmington, Delaware

The George W. Rodgers Co.
FURNITURE & DECORATING

Look Your Best

Phone 2-0561

TAMARGO

BEAUTY SALON

65 East Main Street

Newark, Delaware



Compliments of
SPIC & SPAN
 CURB SERVICE RESTAURANTS

Top of Penny Hill
 Phila. Pike

Sharon Hill, Pa.
 Chester Pike

31st & Market Sts.
 Wilm., Del.

SMITH'S ATLANTIC SERVICE STATION

Frank M. Smith, Prop.

ATLANTIC WHITE FLASH PRODUCTS

Lubrication - Washing

Main and Chapel Streets

Newark, Delaware

NEWARK CLEANERS, INC.

Phone 2-1511

176 E. Main Street

Newark, Delaware

STILTZ

Incorporated

CHARTERED BUSES

Newark

Delaware



•

Compliments of

THE SENIOR CLASS

•

T. T. WELDIN & SONS CO.

PLUMBING, HEATING and VENTILATING

•

Phone 3-4816

3101 Market Street

Wilmington

"COMPLETE BANKING FACILITIES"

NEWARK TRUST COMPANY

Members of Federal Deposit Insurance Corporation

RADIO SERVICE LABORATORIES, INC.

10th AND KING STREETS

Phone 2-4953

WARNER BROTHERS' THEATRES

Wilmington, Delaware

WARNER
ARCADIA

QUEEN
STRAND

RITZ
SAVOY

Where Friendly Service Awaits You

THE SUNDAY STAR

Wilmington

DELAWARE'S ONLY SUNDAY NEWSPAPER

Now in Its 62nd Year

Supports and Encourages Every Good Delaware
Enterprise and Purpose

ELLWOOD SOUDER & SONS

FURNITURE AND DECORATIONS

216 W. 9th Street

Wilmington

Delaware

WE'LL MEET YOU AT THE
DELUXE

•

DELUXE CANDY SHOP, INC.

Phone 3851 for Your Orders

41 E. Main Street

Newark

BUTLER'S INCORPORATED

STATIONERS
and
BOOKSELLERS

•

415 Market Street
Concord Ave. and Washington St.

Wilmington

Delaware

HUBER'S SPORTING GOODS

10 W. Tenth Street

WILMINGTON

DELAWARE

In Delaware
Most People Listen to

W D E L

1120 KC

Member NBC Basic Red Network

SUPERIOR BUSINESS TRAINING

Ask For Bulletins

GOLDEY COLLEGE

Ninth Street at Tatnall

Wilmington

Phone 4-5391

Compliments of

A FRIEND

**GLASGOW ARMS RESTAURANT
and
COLONIAL DINING ROOM**

On Route 40

FULL COURSE DINNERS 60c UP

Open 7 a.m.—11 p.m.

Tel. Newark 2936

MERVIN S. DALE

JEWELER

College Seal Jewelry

Dial 3221

**QUAKER STATE
MOTOR OIL**



Makes Cars Run Better
and Last Longer . . .

BUY IT

Wherever You See the Familiar
Green and White Quaker State Sign

DEER PARK HOTEL

ELIZABETH Z. McKELVEY



Phone 592

Newark, Delaware

GREENWOOD BOOKSHOP

DELAWARE TRUST BUILDING

"All the New Books and the Best of the Old Ones"

GIFTS OF REAL DISTINCTION

FARMERS TRUST COMPANY

NEWARK, DELAWARE

Serving This Community Since 1856

Compliments of

THE FRESHMAN CLASS

Compliments of

THE SOPHOMORE CLASS

Bell, Market 1036, 1037 Keystone, Main 7613, 7614

Established 1880

FRANK HELLERICK CO., INC.

Wholesale Receivers and Distributors
BUTTER - EGGS - CHEESE - POULTRY

120 Callowhill St. 349-351 New Market St.
Philadelphia

JOHN L. KIRK

FLOWERS

Flowers for Every Occasion

Capital Trail

Dial 5344

Mason and Hamlin, Knabe, Chickering and Other Pianos

ROBELEN PIANO CO.

Established 71 Years

RADIOS - RECORDS - MUSIC

710 Market Street

Wilmington, Del.

Complete Stocks of
BARBARA GOULD, DU BARRY, TUSSY
and
LOUPAY COSMETICS

ECKERD'S DRUG STORES

3 Stores to Serve You

H. FEINBERG FURNITURE CO.

806-808 King Street

Wilmington - Delaware

Telephone 8269



BURTNER COAL COMPANY

BITUMINOUS COAL

Gas
Steam
By-Product

Telephone
Pennypacker 0144

123 South Broad Street

Philadelphia

Pennsylvania

Compliments of
STATE THEATRE
Newark



RHODES DRUG STORE

Drugs
All College Supplies
Stationery
Sundries
Text Books
Candies
Soda Water
Pennants
Cigars
Cigarettes

NEXT TO CAMPUS

NEWARK

DELAWARE

COMPLIMENTS
OF
FORUM

Make the evening COMPLETE



.. supper-dance
after the show

FOR delightful recreation mix a pleasant visit to the movies with an equal part of supper-dancing to the refreshing modern music of our orchestra.

The evening so completely pleasurable means new zest for the morrow's tasks.

THE GRILL

Hotel du Pont

PHONE 5121

COMPLIMENTS OF
THE STUDENT COUNCIL
OF THE
WOMEN'S COLLEGE
OF DELAWARE

