



THE TREES

"IT is a task indeed to pick out of these all-too-short four years of undergraduate life at Delaware . . . years brimful of pleasurable incidents, long hours of study . . . some one thing or some one series of things which stands out above all the rest. Strong is the memory of laboratory, machine shop, class room, sports, and even studying now and then. Years will never erase these memories. But there is just one memory that stands out above all the rest, and that is a memory of a picture rather than of a happening or a habit. It is the picture of the wonderful old campus in the spring with its well trimmed lawn framed with those stately old lindens and young budding maples. Remember the luxury of the long, lazy twilights out under those glorious trees, when we gazed for hours at a time across the top of a stiffly posed book and never turned a page. We tried to study, it's true, but the trees wouldn't let us; they brought wonderful dreams of life to us. Those blessed old trees! Save 'em always!"—Adapted from a letter by James Gilpin Lewis, Class of 1912.





NEIL STAHLEY
Football Coach



LYAL CLARK
Assistant Football Coach



J. FENTON DAUGHERTY
President A. A. Council



GERALD P. DOHERTY
Basketball and Baseball Coach



ED. P. BARDO
Swimming Coach



Neil Stahley, Coach; Lyal Clark, Assistant Coach; James Nichols, Manager; Gene DelleDonne, Irvin Malcolm, Junior Managers; Ed Thompson, Captain; Jack Glover, Captain Elect; Kirschner, O'Connell, Zavada, Crowe, Gebhart, Gouert, Records, Swartz, Worrall, Drozdov, Carey, Kane, Hodgson, Scannell, Roberts, Wilson, Nigels, Chesser, Kelley, Manns.

FOOTBALL

COMPOSITE SCORES

	Opponents	Delaware
St. Joseph's	0	16
Juniata	0	14
Hampden-Sydney ...	0	0
Lebanon Valley	24	0
Dickinson	0	7
P. M. C.	12	0
Drexel	0	7
Washington College ..	29	7



JAMES W. NICHOLS
Manager



EDWIN W. THOMPSON
Captain



JOE ZAVADA, Football



"IRISH" O'CONNELL, Football

DELAWARE 16 ST. JOSEPH'S 0

DELAWARE'S 1934 football season opened with a spectacular 16-0 victory over St. Joseph's College of Philadelphia. The game was played on the latter's field in a sea of mud.

This marked the first game with Neil Stahley as head football coach. About ten minutes of the first half had elapsed when Captain Thompson tossed a short forward to Scannell who was standing in the end zone. Thompson place-kicked the extra point.

Shortly after this touchdown, the Blue Hen team again maneuvered into scoring position and Ed Thompson place-kicked a field goal. This ended the scoring until the last quarter when Captain Thompson slid off tackle and ran half the length of the field to score Delaware's second touchdown.

The work of Thompson, Mayer, and Hodgson was outstanding in this first game of the season.



DELAWARE 14 JUNIATA 0

GAINING 447 yards from scrimmage, the Stahleymen completely outclassed the Juniata eleven in the second game of the season when they defeated the Indians, 14-0.

Although threatening the Juniata goal line during the entire game, the Delaware forces did not enter the scoring station until late in the second quarter when Captain Thompson drove over center from the three yard line to tally a touchdown. Thompson also booted the extra point.

With Joe Crowe doing some nice running, the Blue Hen team was in Juniata territory during the entire second half. In the middle of the fourth quarter, the Stahleymen were not to be denied. Crowe sliced off tackle for the second touchdown of the day. Thompson accounted for the extra point.

The outstanding feature of this game was the line play displayed by the Delaware men. With but few exceptions, the Delaware forward wall opened huge holes for the backs to run through.



DICK ROBERTS, Football



OLAF DROZDOV, Football



ED KIRSCHNER, Football

DELAWARE 0 HAMPDEN-SYDNEY 0

DELAWARE'S football team played a 0-0 tie with Hampden-Sydney in their first appearance on Frazer Field. Although completely outplayed during the entire game, the Southern eleven fought hard and managed to stop the Blue Hen gridmen from entering the scoring station.

This game was a disappointment to the Blue and Gold followers because the Delaware team was heavy favorite to win the game. Delaware made 16 first downs to the visitors' 4, but were unable to score.

Three times during the course of the game, Thompson attempted to boot a field goal, but each time the pigskin did not go through the goal posts.

Again in this game, the work of the linemen was the outstanding feature.



CHARLIE GOUERT, Football



DELAWARE 0 LEBANON VALLEY 24

THE Stahleymen dropped their first game of the season when a powerful Lebanon Valley team trounced them by a 24-0 count on the home field.

A line which had yielded few yards all season went to pieces in this game with the Flying Dutchmen. Shortly after the game started, the visitors started to march through the Blue Hen team.

A field goal by Smith, right end for the visitors, was the only scoring done during the first half.

Shortly after intermission the Flying Dutchmen got going and before the final whistle had scored three touchdowns. Feeser and Sheesley were the big guns in this attack. These two backs gained at will against the fading Delaware line.

The defensive work of Glover was the gleaming feature of the local eleven.



FRANK HERKNESS, Football



JACK HODGSON, Football



ED THOMPSON, Capt., Football



MONK DILLON, Football

DELAWARE 7 DICKINSON 0

FOR the first time since 1922 a Delaware grid team won from Dickinson College when the Blue and Gold eleven came out on top of a 7-0 score.

After the disastrous Lebanon Valley game, Coach Stahley made a big change in his varsity line-up, the new arrangement moving Captain Thompson to a wing post and placing Joe Zavada and Dick Roberts in the backfield.

These changes seemed to serve as a tonic for the Delaware gridmen because they kept a strong Dickinson eleven on the defensive during the entire game.

Late in the game, Ed Thompson, who was faking a kick, heaved a long pass to Roberts and the latter scurried over the goal line. Thompson added the extra point.

The work of Roberts and Glover was outstanding, and the line as a whole played heads-up football in this game against the Carlisle foe.



**DELAWARE 0 PENNSYLVANIA MILITARY
COLLEGE 12**

A FIGHTING Blue and Gold eleven went down to defeat before the powerful and heavy P. M. C. gridmen in the Atlantic City Convention Hall by a 12-0 score.

This year the Red Raiders from Chester boasted of having one of the greatest small college grid teams in the country.

Undaunted by the terrific odds, the Stahley-men played the Chester team to a standstill with the exception of two long runs by Malinski. One of these runs scored the Timm men their first touchdown in the second quarter, while the other run came in the third quarter and placed the ball in position for the brilliant Reds Pollock to score.

Several times the Delaware men threatened the uncrossed goal line of the Cadets but each time they were repelled by the Red Team's powerful line.

The work of every Delaware player was remarkable in this fray, with the defensive play of Zavada and Glover standing out.



JOHN CAREY, Football



JOE CROWE, Football



JOE SCANNELL, Football



WILSON WORRALL, Football

DELAWARE 7 DREXEL 6

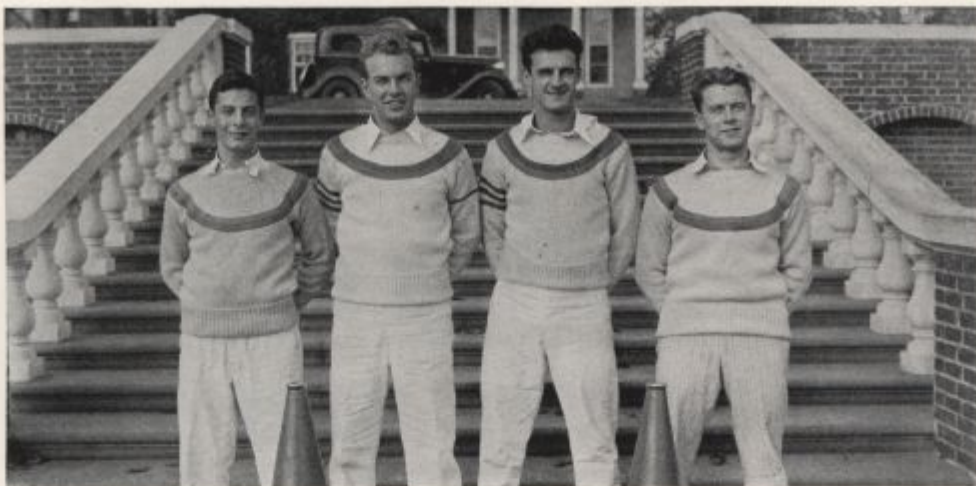
DELAWARE finally broke the spell which Drexel seemed to have over them when they defeated the Dragons on the local grid by a 7-6 count. The superiority of Delaware over Drexel is not disclosed in the final score.

Twice in the early part of the game, Dick Roberts almost got away for touchdowns.

After gaining many yards in the first half and still being unable to score, the Blue Hen team took to the air in the second half and put the pigskin on the eight yard line and from there Glover took the ball over the goal line in three smashes at the line. Thompson's successful try for the extra point later proved to be the margin of victory.

Throwing passes all over the lot, the Halasmen managed to push over a touchdown but the line plunge for the extra point ended in dismal failure.

Again in this game we find no local player who stood out above his teammates.



DELAWARE 7 WASHINGTON COLLEGE 29

WASHINGTON COLLEGE won its first grid victory over Delaware in three years when they emerged on the long end of a 29-7 score. The Chestertown team was undefeated during the 1934 grid season.

The Blue Hen team was decidedly off form against their Maryland foes and easy prey for the visitors' speedy attack.

Nickolson was the big noise for the Washington team, scoring two touchdowns and kicking a field goal. Salters and Young scored the other two touchdowns.

Worrall tallied Delaware's only score when he recovered a Washington College lateral behind the goal line.



TICK SWARTZ, Football



JACK GLOVER, Football



Ed Bardo, Coach; James Prettyman, Captain; Garrett Hume, Captain Elect; Lupton, Newman, Potts, Hinnershitz, Adams, Tawes, Pierre, Eckbert, Crompton, Elliott, Huhn, Rogers, Darrell, Livingston, Hickman, Welsh, Eastburn, Stewart, Grayson, Murray, Krane.

SOCCER

THE 1934 soccer season marks the entrance of this sport into the major field of athletics at the University of Delaware. Of the eight games played, the Blue and Gold team won two, tied two, and lost the remaining four. The high spots of the season were the games with Dickinson and Bucknell. Newman, Hume, and Prettyman were the stars of the soccer campaign.



JIM PRETTYMAN, Capt., Soccer



BLECHMAN, Soccer

COMPOSITE SCORES

	Opponents	Delaware
Rider	1	2
Stevens	2	1
Temple	4	2
W. C. T. C.	4	1
Dickinson	4	7
F. and M.	1	1
E. Stroudsburg ..	3	1
Bucknell	1	1



Andy Bowdle, Coach; Henry Pohl, Captain; E. DiSabatino, Manager; Carey, Crowe, Lambert, Cleary, Cotty, Mayer, Perkins, Hodgson, Anderson, Eastburn, Elechman, Pennock, Rogers, Geller, Parker, Green.



JOE PERKINS, Track

TRACK

DELAWARE'S track team scored one of the best seasons ever recorded at the Newark institution during the 1934 season. The team lost only one dual meet in five starts, that one to the powerful West Chester State Teachers College combine. Three records were broken during the season. "Stretch" Pohl set up a new mark in the pole vault while "Johnny" Carey broke the existing records in both the shot put and javelin events. The Delaware track team also placed fifth in the Middle Atlantic Relays.

COMPOSITE SCORES

	Opponents	Delaware
Johns Hopkins	59	67
LaSalle	60½	65½
St. Joseph	55	71
Drexel	62	64
West Chester State Teachers College	85½	40½
Middle Atlantic		5th



E. DiSABATINO
Manager



Mr. Wilson, Coach; Henry Ridgely, Captain; Alison Manns, Manager; Murray, Vapaa, MacSorley, Slovin.



FRANK MAYER, Track

FENCING

DELAWARE was again well represented in fencing during the 1935 season. In six matches, the Blue Hen team came out on the long end of the score in four of them. In the tri-state tourney the locals also fared well when they won 20 and lost 13 duals. Slovin, MacSorley, and Ridgely were the star performers for the Delaware team.



Cory, Track

COMPOSITE SCORES

	Opponents	Delaware
Johns Hopkins	8	9
Drew University	9	8
Temple	8	9
Lehigh	8	9
Reading Fencing Club	4	8
William and Mary	9	8



Ed Bardo, Coach; Harry T. Wilson, Captain; T. Roe, Manager; Carey, Croes, Veit, DuRoss, Hume, Hartmann, McCullough, Davenport, Kenworthy, Flink, Bant, Carpenter, Swartz, Howard, Drozdov, Snyder.

SWIMMING

ED BARDON'S swim team experience its best season since the sport was established in the Delaware athletic program. Led by Captain Wilson, the Blue and Gold team lost only two meets in ten starts. Only the powerful squads of Pittsburgh and Franklin and Marshall, the latter Eastern Intercollegiate Association champs, were successful against the Blue Hen squad. Carey set up new marks in the 220 and 440 yard dash events and was a member of the record-breaking relay team. "Bill" Croes set up a new record in the 150 yard backstroke and Captain Wilson established a new high point score for the fancy dive. The record breaking relay was composed of Lawrence, DuRoss, Croes, and Carey.



JACK HODGSON, Track

COMPOSITE SCORES

	Opponents	Delaware
Osteopathy	21	47
Pittsburgh	50	18
Villanova	12	56
F. and M.	41	27
Lehigh	27	48
Rider	26	49
Carnegie	36	39
George Washington	32	43
Johns Hopkins	32	43
West Chester	10	56



JOHN CAREY, Capt., Track



BASKETBALL

DELAWARE'S cagers fared badly during the 1934-35 season, winning only four games in fifteen starts. Mid-year exams took a heavy toll on the Blue and Gold basketball team and they were heavily handicapped for the remainder of the season. The outstanding victories of the season were scored over Dickinson and P. M. C. O'Connell and Pennock starred for the Dohertymen in most of the games.



CHARLIE PIÉ, Basketball



ED THOMPSON, Basketball

VARSITY BASKETBALL STATISTICS FOR THE 1934-35 SEASON

	Opponents	Delaware
Haverford	34	29
Randolph-Macon	37	20
St. Joseph	46	31
Hampden-Sydney	24	47
West Chester State Teachers College	37	27
St. Joseph	40	26
P. M. C.	40	29
University of Baltimore	34	44
Army	43	17
Washington College	31	23
West Chester State Teachers College	28	22
Dickinson	42	43
P. M. C.	40	46
Mt. St. Mary	55	28
Washington College	32	26



Gerald P. Doherty, Coach; George Thompson, Captain; Handloff, Manager; Ed Thompson, Brady, Foard, Newman, Jackson, O'Connell, Minner, Crompton, Greenwood, Lomax.

BASEBALL

DELAWARE'S baseball team got away to a slow start in 1934. The first six games were lost, the first four on the annual southern trip. After the disastrous beginning, the Blue and Gold team hit their stride and won six of the last ten games on the schedule. Outstanding among the victories was the win over the powerful Temple University nine and the two victories scored against Washington College. Ferguson, Jackson, and Minner were the outstanding performers for the Blue and Gold nine during the season.

STATISTICS FOR VARSITY BASEBALL FOR THE 1934 SEASON

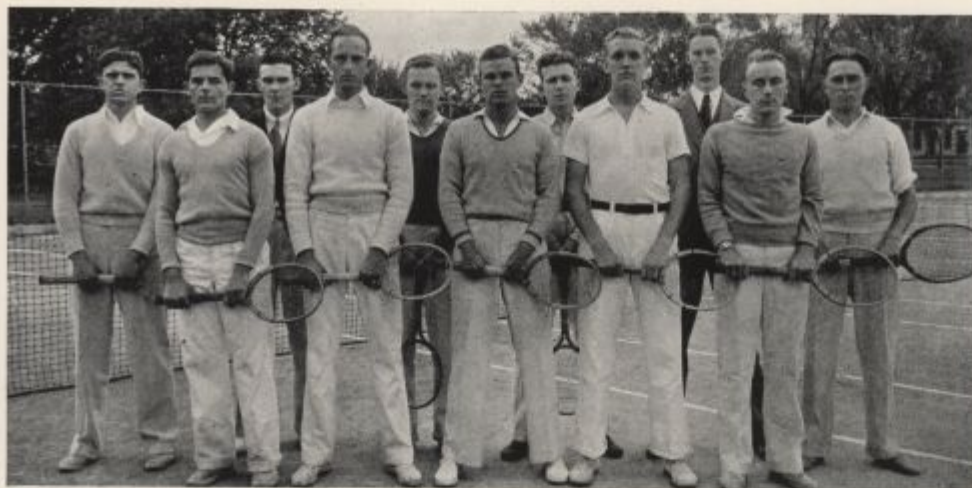
	Opponents	Delaware
Bridgewater	3	2
Randolph-Macon	5	1
Wake Forest	17	2
Elon	13	5
Haverford	8	3
Dickinson	3	1
Washington College	1	5
W. C. S. T. C.	11	2
Susquehanna	6	13
Hampden-Sydney	5	7
Randolph-Macon	3	4
Dickinson	5	3
Mt. St. Mary	5	1
Washington College	15	18
P. M. C.	7	5
Temple	3	4



BUD NEWMAN, Baseball



HICKMAN, Baseball



Prof. Ralph Jones, Coach; Joe Walsh, Captain; Noonan, Manager; Eckbert, Hume, Wheelless, Lawrence, Davis, Hill.



JOE WALSH, Capt., Tennis

TENNIS

DELAWARE suffered its worst tennis season in several years during 1934. Due to bad weather conditions, the team had difficulty getting started. Only six matches were played and the Blue Hen came out on the short end of each one. Joe Walsh was the outstanding player during the season for the local team.

COMPOSITE SCORES

	Opponents	Delaware
Maryland	6	0
Dickinson	8	1
George Washington	6	2
Drexel	8	1
P. M. C.	6	1



SAM KENDALL, Baseball



Prof. Houghton, Coach; Charley Pié, Captain; Walter Mansberger, Manager; Noonan, Assistant Manager; Wilson, Benton, Leahy, Moore, Stradley.

GOLF

THE Blue Hen golfers attained a goal sought by all athletic teams—an undefeated season. Only Franklin and Marshall were able to match the fast stepping Delaware linksmen when they gained a tie score with the local team late in the season. Such teams as Temple, Villanova, Rutgers, and Fordham were among the victims of the powerful Blue and Gold team.

COMPOSITE SCORES

	Opponents	Delaware
Temple	0	6
Rutgers	2	4
Fordham	2	4
Haverford	3½	5½
St. Joseph	2½	6½
Villanova	½	5½
F. and M.	3	3
W. C. S. T.	0	6
Swarthmore	½	5½



ED THOMPSON, Baseball



DEL MINNER, Baseball

INTRAMURAL ATHLETICS

THE annual freshman-sophomore football game was as usual a hard fought battle. Due to inclement weather it was a sloppy affair. The first serious accident in an intramural contest occurred in this game when Bob (Bag-Ears) Jamison, Sophomore, broke his leg during a line buck. The final score was 12-6 in favor of the Sophomores.

Much rivalry was shown between the two sections of the dorms in basketball and soft-ball. Many exciting contests were staged between the two sections. On the whole the two sections seemed to be very evenly matched.

The A. C. boys showed great spirit in forming a basketball team, which played all and any team or teams within a radius of 50 miles. They didn't play so good but they played hard and had a lot of fun.

We sincerely hope that intramural athletics will be continued and broadened in the future. Intramural athletics are, we think, one of the most important and beneficial activities on the campus. The spirit of these intramural contests should do much toward creating the proper college spirit at Delaware.



FRANK FOARD
Baseball



ED CROMPTON
Baseball



HEN BRADY
Baseball



BONEY JACKSON
Baseball