

**c
l
a
s
s
e
s**



THE SENIORS

President	Bob Cofer
Vice-President	Mary Ann Shipherd
Secretary	Jack Lisansky
Treasurer	Jerry Bowlus





JUNE ANDERSON

Education

E-52, Music Club, Chorus, May Day Com., Co-Chrm. Props., F. T. A.

"Gloomy Gus" in the morning . . . misses breakfast just for forty more winks . . . full of enthusiasm and sparkle . . . interested in nurseries—all three kinds . . . plans marriage soon.

Elementary

ROBERTA A. ANDERSON

"Bertie"

Arts and Science

Social Com., W. A. A., I. S. A.

Biology

Friendly, with a gift of gab plus a sense of humor . . . enjoys promoting love matches in genetics lab—with the bugs, that is . . . plans to be a lab technician . . . has a yen for sports and classical music.



WILLIAM L. ANDREWS

ROBERT W. ASHWORTH

H. BRUCE AYARS

"H. B."

Arts and Science

E-52, Pres., Cheerleader, Co-capt., Spartans, V. Track, Econ. Club, Fencing Club, Intramural Sports.

Business Administration

"Go getter" . . . has been an invaluable man in Sigma Nu . . . promoter of "esprit de corps" at Delaware . . . willing and conscientious worker . . . big grin.



PAUL K. BACHER



RICHARD J. BAKER
"Bake"

Arts and Science **Business Administration**
Curly hair and terrific line . . . his interest in women occasionally interrupted by his studies in preparation for law school.

WILLIAM J. BALLING
"Bill"

Arts and Science **Chemistry**
Band, Chorus, A. C. S.
Absent minded chemist . . . jovial father . . . experienced butcher . . . nice guy.

ANNA MARY BARKLEY
"Clay"

Arts and Science **History**
F. T. A.
Quiet and refined, yet a gleam of mischief in her eye . . . ardent football and basketball fan . . . cute sense of humor . . . steady friend.



WESTON H. BEALE
"Wes"

Engineering **Chemical**
Pi Mu Epsilon, A. I. Ch. E., Voice Club, Treas., R. S. S. O., Mu. Chrm., Phi Kappa Tau.
Interested in music, voice and recordings . . . also radio.



SEYMOUR BELLAK
"Gramp"

Engineering **Mechanical**
Debating Club, A. I. Ch. E., A. S. M. E., Alpha Epsilon Phi, Treas., Interfrat. Plays, Blue Hen.
Short and stout with a good sense of humor . . . as dependable as tomorrow . . . deserves title of "best dressed man on campus."

JEANNE R. BENNETT

Arts and Science **English**
Math Club, Chorus, Canterbury Club.
Quiet intelligence . . . big brown eyes . . . known among her intimates as "the great philosopher" . . . Future plans—air hostess.

JOSHUA N. BENNETT



WILLIAM M. BERGMAN, III
"Bill"

Agriculture

Cross Country, Track, Review.

"The weather forecaster" . . . sincere worker
. . . number one man in chess and cross-country
. . . plans to study forestry and the relationship
of weather to plants.

Horticulture



AUDREY BERMAN

NORMAN DAVID BERMAN

Engineering

Phi Kappa Phi, Tau Beta Pi, Pi Mu Epsilon, Alpha
Epsilon Pi, V. Soccer, V. Basketball, Intramurals, Capt.,
A. I. C. E.

Chemical

H. GORDON BETHARDS

Arts and Science

Chemistry

ROBERT F. BOGART
"Bogie"

Arts and Science

Student Council, Spartans, A. C. S.

Future chemist . . . main interests are music
and photography.

Chemistry





PHILIP G. BOHLMAN



L. CHARLYNE BOWERS

Home Economics **Wilmington, Del.**
Child Development
 Home Ec. Club, Cauldron, Soc. Com., Home Ec.
 Advisory Board.

Cheerful and friendly . . . desire to succeed
 and the ability to work with children are def-
 inite assets in her field . . . wedding bells are
 in turn.

GERALD L. BOWLUS
"Jerry"

Engineering **Chemical**
 V. Baseball, V. Basketball, Capt., J. V. Football, Sr.
 Class Treas., A. I. Ch. E., Intramural Sports, Theta Chi
 Frat.

BARBARA ANN BOYER
"Babs"

Secondary Education **English**
 I. V. C. F., Cauldron, Ass't Poetry Ed., Blue Hen, A
 Capella Choir, Band, Inter-Coll. Arch., Tourn., Women's
 Affairs Com.

Charming and friendly . . . pleasing per-
 sonality.



FRANK E. BOYS

Agriculture **Agronomy**
 Aggie Club, V. Pres., Golf Club, Kappa Alpha Frat.



HENRY ALINSON BRAINERD
"Hank"

Engineering **Mechanical**
 Theta Chi, Tau Beta Pi, A. S. M. E.

Unusual sense of humor and gay personality
 . . . known to his friends as the "Brain" of
 the Engineering school.

KATHRYN EWING BREWER



HELEN L. BROWNE
"Brownie"

Home Economics

Home Ec. Club, Pres.

Foods

Tiny, ambitious, efficient and energetic . . . plans to make use of her Home Ec. in both experimental foods work and in married life.

JAMES LATIMER BUCHANAN
"Buck"



Education

V. Football, V. Baseball, Intramural Sports.

Physical

PAULINE P. BURFORD
"Polly"

Education

W. A. A., V. Pres., Soc. Com., Chorus, Cheerleader, Canterbury Club.

Physical

Long locks . . . petite Phys. Ed. major . . . wonderful sport . . . future teacher and bride . . . "Thought I'd split a seam!"

CLAYTON H. BURTON

ROBERT D. BUTLER
"Chic"

Arts and Science

Golf, Soccer, Dramatics.

Home Economics





JOHN GLEASON CATTS

"Jack"

Engineering

V. Swimming, V. Track, Sigma Nu Frat., Lieut. Com., Jr. Prom. Bus. Mgr., A. I. Ch. E., Sec., Interfrat Relay.

Jack's intelligence and personal charm make it inevitable that he will reach his goal . . . initiative and nonchalance are a winning combination.

Chemical

PEGGY CHEW

"Pic"

Home Economics

Hom Ec. Club, V. Pres., Home Ec. Advisory Board, Wesley Club, I. S. C., Sec.

General

Petite friend from Malaya . . . has become a favorite because of her friendliness and cheerful disposition . . . will be greatly missed when she returns to Malaya to teach.

HELENA FRANCES CLARK

"Cookie"

Arts and Science

E-52, Soc. Com., Sec., Newman Club, Forum, Yacht Club, W. A. A., Warner Hall Com.

Psychology-Sociology

Sparkling brown eyes you never forget . . . a friendly smile . . . inexhaustibly energetic and fun-lovin' . . . helpful in all problems or projects . . . perfect characteristics for her chosen field of social service.

JOSEPH H. CLARK, JR.

"Joe"

Engineering

A. S. M. E.

Mechanical

"Professor Joe" . . . excellent worker . . . liked very much by everybody . . . noted for his repertoire of jokes and quips . . . plans to enter the power engineering field after graduation.



ROBERT C. COFER

"Bob"

Engineering

V. Swimming, Capt., V. Track, A. I. Ch. E., S. G. A., Treas., Sr. Class Pres., Kappa Alpha Frat, Who's Who in American Colleges.

Chemical

NORMAN H. COOKE

"The Senator"

Arts and Science

Intramural Sports, Sigma Phi Epsilon, Comptroller, Interfrat, Council.

History

No "kin" to "Senator" Claghorne . . . quiet, amiable, conscientious deliberate . . . keeps everything "koposetic" as Sig Ep's hard working house manager . . . After commencement—graduate school.



JOHN L. COYLE, JR.
"Jack"

Agriculture

Sigma Nu Frat., Aggie Club, J. V. Soccer.

Horticulture



JOSEPH J. CRAMPTON



ETHEL CROTHERS

I. HAMMOND CUBBAGE
"Cub"

Arts and Science

Blue Key Soc., Review, Student Council, Intramural Sports, V. Tennis, Blue Hen, Sports Ed., Kappa Alpha Frat., Psy. Club.

Psychology

Cub's main interests are his wife and psychology, the latter of which has been more recent . . . a good student . . . well known for his pleasing personality . . . plans to do graduate work in psychology.

PETER CURRIER

HENRY R. DAVISON
"Hank"

Arts and Science

I. M. A., Intramural Sports, J. V. Basketball.

Business Administration

Amiable, easy to get along with . . . likes golf and tennis . . . studies hard . . . future plans involve marriage and accounting.





BEVERLY ELAINE DEIDRICK

"Bev"

Arts and Science

Social Com., Pub. Chrm., Cheerleader, S. G. A., W. A. A., I. S. A., Blue Hen, Sports Ed., Biog. Ed., Chorus.

Sociology

Striking blonde with personality-plus and terrific energy . . . talent for jitterbugging . . . hard worker and campaigner for school spirit . . . plans to go into social work upon graduation.

JOHN R. DICK, JR.

"John"

Engineering

A. S. M. E., Pres., Brown Hall, Soc. Council, R. S. S. O.

Mechanical

One of those people you instinctively like at first glance . . . generous, independent . . . knows automobiles . . . Don't be surprised if your next new car is designed by John.

LOUISE ELIZABETH DIETRICH

"Twinnie"

Education

Chorus, D. S. C. A., I. V. C.

Elementary

Conscientious, thoughtful and loyal . . . understanding friend . . . plans to teach second and third grades.



LUCILLE ANNA DIETRICH

"Twinnie"

Education

Chorus, D. S. C. A., I. V. C.

Elementary

Loyal friend . . . Her teaching career will be interrupted by "heart interest."



RODNEY WAYNE DILLMAN

"Rod"

Arts and Science

Psychology-Philosophy

GERALD DOHERTY

"Doc"

Arts and Science

V. Football, V. Baseball, V. Basketball.

Physical Education

CHRISTINE DORSEY

"Chris"

Arts and Science

U. W. R. F.

History

"Ignorance never settles a question."

LEONARD A. DOUGHERTY

"Len"

Arts and Science

Business Administration

S. G. A., Pres., Kappa Alpha, Sec.; Pres., Soph Class
Sec., Newman Club, Soc. Chrm., Student Council, V.
Baseball.



ALBERT R. duBELL, JR.

"Al"

Arts and Science

Economics

Review, Sigma Nu Frat., Intramural Sports.

Smart appearance, an affable manner, and a broad interest in college affairs . . . the epitome of a succesful collegian.

GRACE DUKES

"Dukes"

Education

Elementary

W. A. A., Music Club, D. S. C. A., Chorus, Choir,
F. T. A.

Vitality . . . never on time . . . loves to sleep
and play bridge . . . takes life as it comes and
enjoys living . . . always ready to cheer a pal
up.



RAYMOND B. DUNCAN

LT. JAMES V. ECHEVERRIA

"Jim"

Engineering

Mechanical

A. S. M. E., Sec., Stud. Faculty Council.

Jim's always a pleasant and willing worker . . .
has proved himself capable of handling respon-
sible positions well . . . Pleasing personality . . .
Secure future in doing the job he loves best—
regular army commission.



THELMA EDLER

Education

Elementary

Quiet, reserved, friendly and small, has a twinkle in her eye and a smile for all.



ROBERT M. EISSNER

"Ice"

Arts and Science

Mathematics

Sigma Nu Frat., Intramural Sports, V. Basketball.

"Ice" is a friendly, congenial fellow that completes every task he undertakes . . . likes sports and math . . . hopes to be a sports statician.

PAULINE ELLINGSWORTH

"Polly"

Elementary

Education

Chorus, A. Capella Choir, Wesley Club.

Transfer from Wesley Junior College . . . a pretty soprano voice, a ready smile and a charming personality.



RALPH W. ENGLISH

Agriculture

Education

Band, Soccer, Aggie Club.

A well-liked, diligent scholar and conservative politician . . . concentrates on the acquisition of knowledge, social problems, sports, and just plain tomfoolery.



JAMES B. ESHLEMAN

"Jim"

Arts and Science

Business Administration

Bridge Tournament.

Quiet and unassuming . . . likes golf, bridge, clothes and nurses . . . Look for Eshleman's Ready Mixed Concrete Company in the future . . . Philosophy: "If you can't say anything good about a person, don't say anything."

DONALD L. EWING

HERBERT W. EWING
"Herb"

Arts and Science

Football, Intramural Sports.

Pre-Law (History)



DAVID H. FORRESTER
"Dave"

Engineering

A. I. Ch. E., Sec., Kappa Alpha, Sec., Swimming, Mgr.,
Gold Key Society.

Chemical

ELSIE FOULSHAM

Arts and Science

Internat'l Club, Augustan Soc., Sec., Cauldron, Art Ed.,
Review, U. W. R. F.

Sociology



SAMUEL LEE FRANKEL
"Sam"

Education
Swimming.

Science

DOROTHY CATTS FUHRMEISTER
"Georg"

Home Economics

E-52, Cheerleading, Capt., Social Com., Home Ec.
Club, Review Staff, Asst. Student Head, Kent Hall,
Who's Who Among Students.

Foods

Her cheery "hello" and everglowing personality can be equaled only by her intelligence, initiative and quality of leadership.

ELIZABETH C. GAM
"Betty"

Education

W. A. A., Review, Cauldron, May Day Chrm., Women's
Stud. Gov. Repres.

Physical





ROBERT J. GAMBLE

MARTIN S. GARFINKEL
"Sam"

Arts and Science **Biology**
Intramural Sports, Review, Circ. Mgr., Sigma Tau Pi,
V. Chancellor, Alpha Epsilon Pi Frat.

Wilmington Don Juan . . . a stellar personality . . . dreaming constantly of wisdom teeth . . . will make a fine dentist.

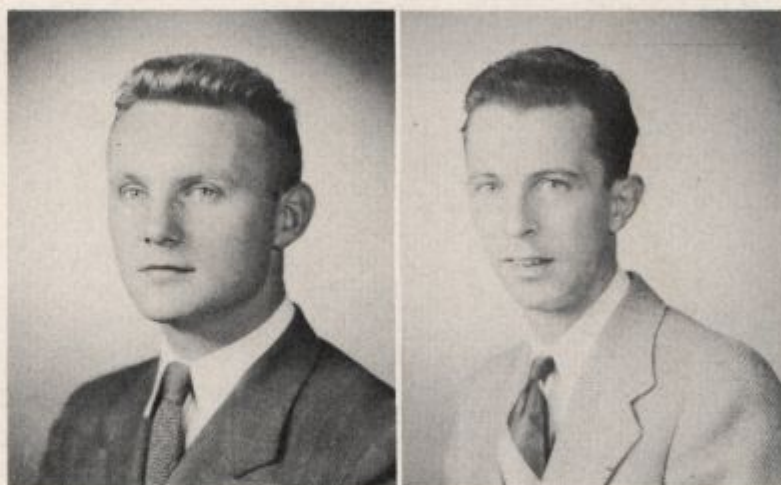
JOHN PARKER GEYER
"Parks"

Arts and Science **Chemistry**
V. Wrestling, Phi Kappa Tau, Pres., R. S. S. O., Soc. Chrm.

Sincere worker . . . a good leader—follows well where blondes are concerned . . . Motto: "nothing ventured is nothing gained."

JULES A. GLADNER

Arts and Science **Chemistry**
A serious minded individual . . . industrious and hardworking in his chosen field . . . good sense of humor . . . always ready to help the other fellow.



RUTH ANN GREEN
"Rudy"

Arts and Science **English**
W. A. A., Cheerleader, Cauldron, Prose Ed., Augustan Society, V. Pres., Blue Hen, Co-Ass't. Ed.; Editor-in-chief, May Day, Prog. Chrm.; Publ. Chrm.

The Blue Hen's bombastic boss-lady . . . has a real understanding of people; tolerant, yet opinionated . . . unexpectedly humorous . . . a facility for literary expression.

MARLYN A. GREENBERG
"Moots"

Arts and Science **Dramatic Arts**
Blue Hen, Co-Adv. Mgr., E-52, Make-up Chrm., Forum, Cheerleader.

Considerate . . . petite . . . subtle wit . . . plans to train future thespians . . . has a warm friendliness . . . always willing to provide entertainment when necessary . . . composer of several songs.



ELEANOR BRADLEY GRIER
"Lee"

Arts and Science

"Tres gay" . . . fun aplenty, laughs galore
. . . sleep major, psychology minor . . . voted
"Pennsy's" best passenger . . . summer bride
. . . "Gotta go feed that rat!"

Psychology

RICHARD DEANE GROO
"Dick"

Arts and Science

Business Administration

Jr. Prom Chrm., Review, Sports Staff, Dramatics, Cauldron.

The tall, lanky guy with liberal ideas . . . aggressive political and social action . . . easy-going, likeable, with a terrific sense of humor . . . good writer, but will enter the sales field after graduation.



JOSEPH A. GROSSMAN

EDMUND GROVE
"Ed"

Engineering

Review, A. I. Ch. E., Bridge Tournament.

Chemical

Always willing to participate in any game of bridge . . . Likes odd stories and always has one to add to the conversation . . . Chem. Eng. is his pride and joy . . . plans to go into production or sales.

STEPHEN GULA

EDWIN LINCOLN HAINES, JR.
"Ed" "Bud"

Arts and Science

Business Administration

V. Tennis, Capt., Brown Hall, Soc. Com., Mail Man.

Flashy ties and tennis games . . . Bud enjoys the best in life . . . record collection makes Rm. 212 Br. Hall the crossroads of the dorm . . . being "mail man" makes him especially popular with the opposite sex.



PAUL C. HARRISON

Engineering

V. Soccer, A. S. M. E.

Diligent, hard-working fellow . . . honest, loyal . . . loves all things aeronautic . . . tops as an engineering student.

Mechanical

FRANKLIN W. HAZZARD

"Hap"

Engineering

Review, Swimming, A. S. M. E., Sigma Nu Frat., Intramural Sports.

Mechanical



WARREN L. HEAPS

"Lumley"

Arts and Science

Economics

SALLY REBECCA HEINEL



Arts and Science

Cheerleader, Stud. Head Warner, Review, Copy Ed., W. A. A., Orchestra, Music Club, Sec.-Treas., D. S. C. A., Sec., Chorus.

History

Ambitious cheerleader . . . plenty of pep and enthusiasm for anything and everything . . . conscientious . . . likes good dancers, having fun, doing things and going places . . . plans to teach history.



RUDOLPH HELLER

BERNARD HESSLER

W. ROBERT HICKMAN

"Bob"

Agriculture

Aggie Club, Treas.

Agronomy



STEWART E. HILD

PETER B. HILL

"Pete"

Arts and Science

Review, Copy Ed., A. C. S., V.-Pres., R. S. S. O., Intramural Sports, Two O'Clock Club.

Chemistry

All around personality and ability . . . collector of perfumed cigarettes, fiancées, etc. . . . an able journalist . . . good ideas.

ROBERT S. HODGSON, JR.

"Bob"

Agriculture

Intramural Sports, Aggie. Club.

Education



BEVERLY JO ANN HOFFMAN

"Jo"

Arts and Science

Math Club, Science Club, W. A. A., Ed. Club, Organization Com.

ROSALIE HOKE

"Rhodie"

Arts and Science

Spanish Club, French Club, Chorus.

Spanish

"Rhodie," pug nose, friendly smile, outstanding quality of neatness . . . so easy-going . . . particular talent for languages . . . will trade "literateur francais" for Chicken a la king in June.





WILLIAM HOLLINGSWORTH

MORGAN HOMEWOOD
"Commodore"

Engineering

Yacht Club, A. I. Ch. E., R. S. S. O., Athletic Ticket Mgr.

Chemical

Excellent executive and organizational ability . . . hopes to go into business for himself . . . favorite expression—"I mean" . . . independence personified.

WILLIAM B. HOWELL
"Bill"

Arts and Science

R. O. T. C., Band.

Economics

Well-liked by those fortunate enough to know him . . . his economics should prove valuable soon . . . domesticity here he comes!

HARRY HUXFORD



MARK JACOBY
"Jake"

Arts and Science

Alpha Epsilon Pi, Pres., Jr. Class, Sec., Student Council, Blue Hen, Bus. Mgr., Band, Review, Bus. Staff, Intramural Sports.

Economics

Mark will go into the business world with the same bang with which he plays the drums . . . His leadership in campus activities gave full scope to his already well-developed personality, charm and wit. Delaware women have sold him on matrimony.



JOSEPH G. JARRELL
"Joe"

Arts and Science

Intramural Sports, Band, Harter Hall, House Mgr., A. C. S., Swimming, Capt.

Chemistry

Honest, introspective, . . . a wife and son maintain much of his attention.

HERBERT F. JOHANSON
"Jo"

Engineering

Chemical



DOROTHY ESTHER JONES
"Dot"

Arts and Science

Art Education

W. A. A., Art Club, French Club, Spanish Club, Chorus, Soc. Com.

Merry and full of fun . . . favorite hobby—leading someone into her latest practical joke . . . interested in music, sports, and art . . . plans a future in commercial art.

SAMUEL P. JULIAN
"Sam"

Agriculture
Aggie Club.

Entomology-Plant Pathology



CYRIL J. KAEMMERLEN, JR.
"Cy"

Engineering

Chemical

A. I. Ch. E., A. C. S.

Major interests are women—wife and daughter . . . always dependable . . . darn good engineer . . . plans for future—raising a family and supporting it.

DONALD W. KERSHNER
"Don"

Engineering

Chemical

Theta Chi Frat., Pi Mu Epsilon, Sec., A. I. Ch. E.
Graduate work.

RICHARD C. KIDDOO
"Dick"

Engineering

Chemical

Review, Sports Ed., Ed., S. G. A., Stud.-Faculty Senate, V. Basketball, V. Soccer, Theta Chi Frat., A. I. Ch. E., Intramural Sports.

Participant in many campus activities . . . does equally well in studies and extra-curricular interests . . . subtle wit.





JANE REBECCA KLAIR
"Janie"

Arts and Science
A. C. S.

Chemistry

Demure, but full of energy . . . Loves hockey, skiing, horseback riding, and helping on her father's farm . . . active in W. A. A. at Juniata College from which she is a transfer.

ROBERT J. KRAPP

HERMAN YOUNG KRINSKY
"Herm"

Engineering

Band, A. I. Ch. E., Pres., A. C. S., Tau Beta Pi.

Interested in music—all kinds . . . Graduate work.

Chemical

WALDEMAR J. KRUSSMAN
"Gruesome"

Engineering

Intramural Sports, A. S. M. E.

Mechanical



RICHARD W. KUNSTMAN
"Dick"

Engineering

A. I. Ch. E., Theta Chi, Tau Beta Pi.

Chemical

Plans graduate work for a Ph.D. in Chemical Engineering in preparation for a career as consultant engineer . . . Would like to revisit Europe someday—out of uniform . . . classical music.

EDWARD H. LAKE
"Ed" "Cutie"

Engineering

A. S. M. E., Tennis.

Mechanical

The fun loving lad with an evil gleam in his eye . . . fair minded . . . ability to talk to people.



GRACE C. LARSON
"Gracie"

Arts and Science

Soc. Com., Chorus.

History

Gracie's dimpled smile is the key to the warmth and friendliness which underlies her outward calm and poise . . . plans to do graduate work and travel.



EARLE W. LEAMAN
"Lemon"

Engineering

Band, Interfrat. Council, V.-Pres., A. S. M. E., Intramural Sports, Theta Chi Frat., Pres.

Mechanical

Quality of leadership . . . active fraternity man.

SYBIL LEVENSON
"Syb"

Arts and Science

E-52, V.-Pres., Chorus.

Dramatics

Atomic frankness . . . individualistic and unconventional . . . spontaneous sense of humor . . . versatile . . . gives expressive interpretations of varied roles on the stage . . . outstanding dramatic ability.



ROBERT H. LEVINE
"Bob"

Arts and Science

Alpha Epsilon Pi, Sec., Pres., Athanean Soc., Pres., E-52, Thos. J. Craven Hist. Prize, Review, Asst. Spts. Ed., Contr. Ed., Cauldron, Mng. Ed., Format Ed., Blue Hen, Co-Asst. Ed., Intramural Sports.

Philosophy

Aggressively liberal . . . outspoken leader for political, social and economic equality . . . serious . . . Hopes to write the great American social drama at Western Reserve Graduate School of Dramatics.

ROBERT C. LEVIS
"Bob"

Arts and Science

V. Track, Sigma Phi Epsilon Frat., Band, E-52.

Mathematics

Sober, industrious, conscientious, versatile . . . an unassuming guy, with a philosophical tint . . . puckish . . . his abiding integrity admired by everyone.



HENRY J. LEWIS
"Hank"

Engineering

Swimming, Track, Intramural Sports, Newman Club, A. S. C. E., V.-Pres.

Civil



ROBERT M. LEWIS
"Bob"

Arts and Science
Blue Hen.

Psychology

Vivacious, handsome chap who takes his school work seriously . . . The southern drawl is quite distinctive . . . swell disposition.

LOUIS T. LIARAKOS
"Moose"

Engineering

Chemical

Tau Beta Pi, V. Basketball, Intramural Sports, A. I. Ch. E., V.-Pres., Brown Hall House Council.

The boy with the delightful smile and the big laugh . . . a good engineer to boot . . . always ready for a half hour of bridge.

NANCY C. LINDSAY
"Nance"

Arts and Science

History

Music Club, Band, Head of House, Review.

In Nancy there is the charming example of efficiency and poise. "She was true to her word, her work, and her friend."



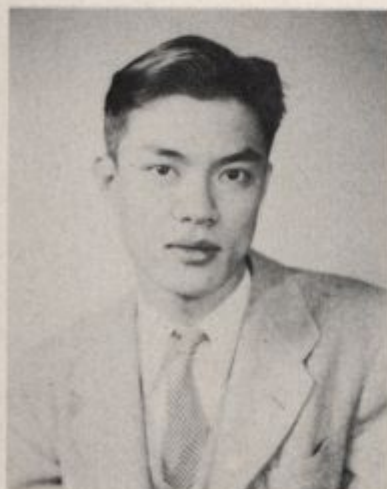
RICHARD S. LINDSEY

HUNG-SUN LING
"Steve"

Engineering

Chemical

Oddly enough an engineer who is also a philosopher! . . . practicality and intellectuality—the combination of practical application and brooding wisdom . . . a credit to two hemispheres which here, can and do meet.



JACK LISANSKY

Arts and Science

Business Administration

Football, A. E. Pi, Sr. Class, Sec.

HARRY G. LITTLE, JR.
"Little 'Arry"

Arts and Science **Business Administration**
Future plans—to make a lot of money . . . thinks he is the oldest guy in the dorm who is still a bache.



FLORENCE E. LOOSE
"Betty"

Arts and Science **English**
S. G. A., Head of Woman's Affairs, W. A. A., Orchestra, Stud. Head of Warner.
Natural leader . . . talented swimmer . . . rings true blue . . . Her brown eyes are as sincere as her character.

SHIRLEY ANN LORD
"Shirl"

Arts and Science **Economics**
French Club, W. A. A., Canterbury Club.
Easy to get along with . . . interested in books, sports, and music . . . often manages to open her mouth and stick her foot in it . . . Plans include teaching or commercial work.



PAULINE McCABE
"Polly"

Education **Elementary**
Chorus, A Capella Choir.
The girl with the beautiful hair and the disposition to match . . . always on the go but never too busy to lend a hand.

BYRON W. McCANDLES

JULIANNE REYNOLDS McCAULEY
"Judy"

Home Economics **Foods and Nutrition**
Home Ec. Club.
Transfer student from the University of Maryland where she was better known as "Bashful"



F. EARL McGINNES, JR.

Sec. Education

Science



DONALD L. McLELLAN
"Mac"

Engineering

Chemical

Sigma Nu Frat., Drum Major, Band, A. I. Ch. E., Intramural Sports, Jr. Prom Chrm., Frosh Class, V.-Pres., Pub. Chrm., Soc. Com., Spartans.

Mac's interest in various activities, plus his effervescent personality and unparalleled piano playing, have made him an outstanding person on campus . . . Future—an engineering career and a girl named "Johnny."

NANCY M. McQUAID
"Nance"

Arts and Science

French

E-52, Sec., Newman Club, Corres. Sec., Review, Chorus, French Club, Ass't Fire Capt., W. A. A., Blue Hen.

Nance—the eternal ingenue . . . cute, witty, loads of fun . . . ski-nose . . . constantly hurrying, usually singing in her pleasing voice . . . devilish grin . . . hates breakfast.

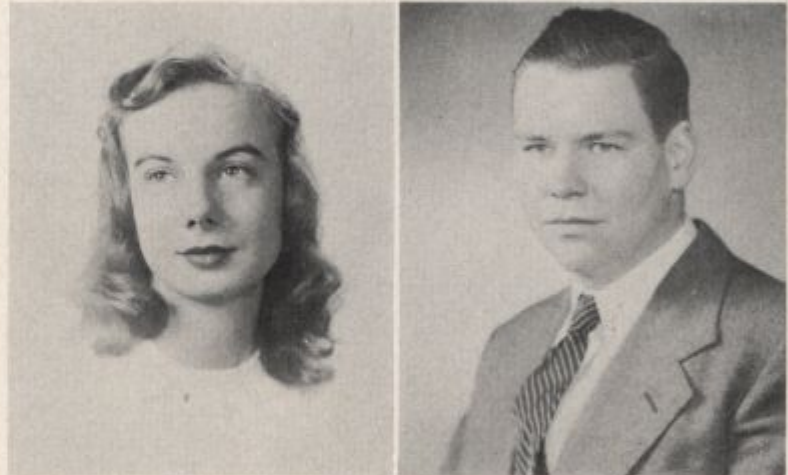
JOSEPH MEDILL McVEY
"Tiger Joe"

Education

Social Studies

Chorus, Band, E-52, Football, Sigma Nu, Basketball Mgr., Review, U. D. G. Award.

The Tiger plans to teach after graduation . . . good natured, affable, and energetic . . . confides that he'll take any comers between semesters.



JAMES W. MAHONEY

Arts and Science
French Club, Sec.

French

MARTIN STANLEY MALTENFORT
"Marty"

Engineering

Chemical

A. I. Ch. E., Amer. Soc. for Testing Mat'ls., Camera Club, A. C. S., R. S. S. O

Spends most of his time working on waxes and emulsions . . . has a flare for electrical gadgets . . . an all round good fellow.



MARGERY F. MARSTON
"Margie"

Arts and Science

Review, Asst. News Ed., News Ed., Canterbury Club, Yacht Club, Dramatics.

"As soon as we were coupling her name with one man she was calmly changing to another"—as suitable for Margie as it was in the 1920 **Blue Hen** for her mother. Witty, fun, dean's list and a wide variety of interests help to complete the picture.

HENRY L. MAXWELL
"Hank"

Arts and Science

Sigma Phi Epsilon, Treas., V.-Pres., Interfrat, Council, R. O. T. C. Band.

Part II of the Brothers Maxwell . . . unpredictable, with a gigantic sense of humor that never runs down . . . the same cannot be said of his car unfortunately.

History



JAMES MAXWELL, JR.
"Jim"

Arts and Science

Business Administration

Sigma Phi Epsilon, Pres., Interfrat Council, Pres.

Part I of the Brothers Maxwell . . . "Checker" displayed his leadership and organizational abilities in getting Sig Ep on its feet after the war . . . a hard worker and staunch friend.



JOHN WILLIAM MESSICK
"Jack"

Education

Physical

V. Football, Co-Capt., V. Baseball, Intramural Sports, Spartans, Little All Amer. Football.

Easy to get along with off the athletic field . . . ambitious, good coach . . . has market cornered from stationery to used cars . . . Future—super salesman.

CAROL JANE MILLER

Arts and Science

Review, Social Com., Blue Hen, Wesley Club, D. S. C. A., Cauldron.

Natural and unaffected, conscientious worker . . . addicted to bridge and dancing . . . supersalowsoman . . . plans to work for publishing company.

History

EDWARD G. MILLER
"Eddie"

Engineering

Newman Club, Band, A. I. Ch. E., Cardinal, Mgr.; Ed., Two O'Clock Club.

Rolls out of the sack on weekends to gravitate toward Baltimore . . . slide rule mechanic first class.

Chemical



HENRIETTE MILLER**"Henri"****Home Economics****Education**

Fr. Class Treas., Review, Advt. Mgr., Ass't Bus. Mgr.,
D. S. C. A., Treas. E-52 Costume Chrm.

Energetic—willing to help with any project
... always good for a laugh ... clever at
making clothes—plans to teach Home Eco-
nomics.

THELMA EILEEN MILLS**"Eileen"****Education****Elementary**

Chorus, May Court, F. T. A.

One of those girls you come to when you
need a problem solved or a blue mood chased
away ... sweet, fun-loving, and nice to be
around.

VANCE MITCHELL, JR.**"Mitch"****Engineering****Civil**

Kappa Alpha Frat., A. S. C. E., Treas., Pres., Review,
Adv. R. O. T. C.

**ELIZABETH W. MOORE****"Bette"****Arts and Science****Fine Arts, Education**

Band, Chorus, Art Club, May Day Com. Poster Chrm.,
Soc. Com., Chrm. Decor. Com., Warner.

Her quiet charm and consideration for others
have won her many friends ... Bette's interests
lie in her art work and in making plans for
marriage in the near future.

BEVERLY MOSS**LOTTIE MUELLER****Arts and Science****English**

Augustan Soc., Treas., Cauldron, Assoc. Ed.; Ed-in-
Chief, Internat'l Students Club, Chorus.

An individualist, she is frank and sincere.
Sharp sense of humor ... Intellectual ...
exceptional writing ability.

EDWARD A. MULROONEY, JR.
"Mul"

Engineering

Tau Beta Pi, A. S. M. E.

Mechanical

If you haven't seen the latest pictures of the Mulrooney baby, take a day off any time . . . Ed will be delighted to tell you all about his chief interest in life.



CHARLES MUNDY
"Chuck"

Agriculture

Aggie Club, Newman Club.

A. I.

Chuck likes sports, dancing, and college hours . . . plans to go into agricultural research after graduation.



G. DONALD MUNGER
"Skip"

Agriculture

Agronomy

Choir, Aggie Club, Sigma Phi Epsilon Frat., Pledge Chrm., Intramural Sports, Jr. Prom Chrm.

His carefree yet earnest attitude has made him popular with students as well as faculty.

FRANK ALLARDYCE MURRAY
"Dyce"

Arts and Science

Chemistry

JAMES MABEN MYERS, JR.
"Jim"

Arts and Science

V. Track, Sigma Nu Frat., R. O. T. C. Cadet Capt., Intramural Sports.

Economics

A smile and a good word for everyone . . . dependable and pipe-smoking Jim finds his chief interests in his wife and daughter, and in fraternity work. Plans to work in a productive industry.



JOHN W. NASSIVERA



ROBERT W. NEESON

JOHN P. NESTER
"Jack"

Agriculture

Kappa Alpha Fraternity, Newman Club, Aggie Club, Intramural Sports.

Agromony

HARVEY P. NEWTON

ALBERT F. NORTHWOOD



CHARLES D. NUMBERS

JUNE OAKLEY

FRANK C. O'DAY

Agriculture

V. Swimming, Kappa Alpha Frat., V.-Pres., Aggie Club.

An easy-going and a well liked person . . . His unabounding energy, intelligence and likeable personality give promise of a bright future in industry.

Agronomy

JAMES E. ORR, JR. 'Jim'

Engineering

A. I. Ch. E., Spartans, V. Soccer, Student Council, Treas., Interfrat, Council, Treas., Band, Sigma Phi Epsilon, Pres.

Friendly and well-liked, Jim will probably assume the same conscientious attitude toward settling down to home making on his beloved Long Island, as he has assumed in his studies and many other activities on campus.

Chemical



WILLIAM J. OSBORNE 'Bill,' 'Ozzy'

Engineering

Band, A. I. Ch. E., Yacht Club, Kappa Alpha Frat., Tau Beta Pi, Intramural Sports.

One of chief organizers of Yacht Club . . . highly reliable in assuming responsibilities . . . Wants to enter production and management field in executive capacity.

Chemical



MAURICE A. OWENS 'Bud'

Arts and Science

Theta Chi Frat., V. Football, Newman Club.

Friendly, good dancer, and lots of fun. Expects to go into advertising or the Foreign Service . . . would like to speak "français."

Business Administration

PEARL OXORN

Arts and Science

W. A. A., Spanish Club, Soc. Com.

Tall, dark hair, and oh so striking . . . sophisticated . . . full of fun . . . With her intelligence and seriousness of purpose she makes a wonderful better-half for Doctor Oxorn.

Psychology

PHILIP E. PAGE, JR.

Engineering

Internat'l Students Club, founder and Pres., Brown Hall, House Mgr., Spec. Soc. Events Com., Chrm., A. C. S., Treas., A. I. Ch. E., Newman Club, Kappa Alpha Frat.

A variety of interests and activities marks Phil's campus career . . . quiet and efficient, sincere and friendly.

Chemical





VERNON W. PATTERSON



ANNE PERKINS

DONALD C. PHILLIPS

CHARLES N. PIERSON



DOROTHY PLATT
"Dotty"

Arts and Science

Student Council, A. C. S., Corres. Sec.

Chemistry

Dot is known for her intellectual capacity and unexpected sense of humor . . . Reserved, conscientious, and hardworking.



HARRY POLLACK

WALTER S. POLLARD
"Walt" "Peahead"

Arts and Science

Intramural Sports, R. O. T. C.

Personable young man who belongs to the Omar Kiam school of "Wine, Women, and Song" . . . lifelong ambition has been to be in business for himself, but graduation will probably find him back with the "Wheels" on the Penna. R. R.

Economics

WILLIAM V. POMICHALEK
"Pommie"

Arts and Science

Kappa Alpha Frat., Treas., Intramural Sports, Harter Hall, House Mgr., A. C. S., R. O. T. C. Band, Band

Business Administration



CHARLES C. PORCH
"Charlie"

Engineering

Brown Hall House Council, Brown Hall, Pres., A. I. E. E., Pres., R. S. S. O.

Electrical

Quiet, sober-minded . . . always willing to listen to the other fellow's troubles . . . will solve your radio problems.



JOHN H. POVEY
"Rock"

Arts and Science

Theta Chi Frat., V. Soccer, Jr. Prom Com., V. Track,

Business Administration

Twice captain of the varsity soccermen, the "Rock" was a great competitor and an inspiring leader. Whatever be his chosen field, Jack's academic standards and personality assure his success.

JANE A. REED
"Jimmy"

Education

W. A. A.

Physical

You've seen her at all the games—be it football, basketball—all kinds . . . readily lends a hand to girls having P. E. problems . . . will be teaching at some college close by in the near future.

STANLEY L. REED
"Stan"

Arts and Science

Jr. Class Pres., Kappa Alpha Frat., Pres., A. C. S., Pres., Intramural Sports, Jr. Prom Com., Interfrat. Council, V.-Pres.

Chemistry



FLORENCE J. REYNOLDS
"Fruff"



Arts and Science

E-52, May Court, Chorus.

Dramatics

Blonde hair, blue eyes, and a sparkling personality are three reasons why Fruff, upon graduation, will exchange play books for cook books. Well-liked, and easy to get along with.

MARGARET R. REYNOLDS
"Peggy"

Home Economics

Band, Home Ec. Club.

Education

Would like to teach Home Ec. in a Delaware school . . . amiable, dependable, and efficient . . . wedding bells for her this Spring.

CHARLES E. RIVERS

ELEANOR ROBIE
"Robie"

Home Economics

Home Ec. Club, Soc, Com.

Foods

Sparkling personality . . . neat gal . . . calm acceptance of life's tribulations . . . looking forward to those plain gold band days . . . can really cook, too.



CHARLES M. ROGERS
"Charlie"

Arts and Science

Sigma Phi Spsilon Frat., Chorus, Review, Piano Club, Dramatics, A Capella Choir.

Biology

Mild-mannered Charlie is known around Sig Ep not only as a brilliant pianist—a Rubinstein in the rough—but as the efficient and hard-working secretary . . . Plans to become an M.D. after graduation and hang out a platinum shingle on Park Ave.

MARSHALL C. ROGERS
"Marsh"

Arts and Science

Chorus, Soccer.

Business Administration



WILLIAM H. RUNCIE, JR.



ANN THERESE SCANNELL



Arts and Science

Newman Club, Sec.-Treas., Math Club, Sec; Sec.-Treas., Review, E-52, May Court, W. A. A., Chorus, May Day Com.

English

Has a down under smile . . . popular, loads of fun . . . so pretty . . . plans to do graduate work in Psyc.

RAY C. SCHAEFFER
"Shammie"

Arts and Science Business Administration
Cross Country, Wrestling, Math Club.



CHARLES E. SCHELL
"Bud" "Chuck"

Agriculture Horticulture
Soccer, Aggie Club, Kappa Alpha, Frat.

Interested in horticulture . . . ardent stamp collector. Upon graduation he is contemplating taking his M.S. at the U. of D.

ARNOLD P. SCHUELER
"Schultz"

Engineering

Tau Beta Pi, Pres., Pi Mu Epsilon, Phi Kappa Phi.

Chemical

His chief interests are his wife and family . . . enjoys all types of music . . . plans to do graduate work in chemical engineering—anticipates being a consultant engineer.

KURT L. SELIGMAN
"Baldy"

Arts and Science

Review, R. O. T. C., I. S. A., Internat's. Rel. Club, Internat'l. Students Club, A. C. S., Track, Soccer, Brown Hall House Council.

Chemistry

His wit and pleasing personality have won for him many freinds . . . plans to continue his studies for an advanced degree in chemistry.





RICHARD P. SHAPIRO



HORACE C. SHERRILL, JR.

Arts and Science Business Administration
Band, Kappa Alpha Frat.

ARTHUR K. SHIELS
"Ken"

Arts and Science Pre-Law
Sigma Nu, Chaplain, Hist., Blue Hen, Intramurals.



MARY ANN SHIPHERD
"Shippy"

Arts and Science Chemistry
Cheerleader, Science Club, Math Club, Stud. Gov't.,
W. A. A., Yacht Club, Canterbury Club, A. C. S.

No shrinking violet, Shippy is effervescent, bubbling . . . her vivaciousness and pep have won her many friends on campus.



MAHLON J. SHOFF

Arts and Science Pre-Medical



M. IRENE SHORT
"Shortie"

Arts and Science Business Administration
S. G. A., Co. Chrm., Soc. Com., E-52, Bus. Mgr.;
W. A. A., Pres., Blue Hen, Bio. Ed.; Co-Bus. Mgr.,
Internat'l Rel. Club, V.-Pres., Radio Review, Jr. Class,
V.-Pres., Who's Who in Amer. Univ.

Her natural air and unaffectedness are rare qualities . . . Zany sense of humor . . . loves to sing and jitterbug, but her future will be devoted to the more sober aspects of business.

IRVING SHUREN

"Irv"

Arts and Science Pre-Medical (Biology)

Review, Chorus, A Capella Choir, Alpha Epsilon Pi Frat.

Instead of cutting rugs this future Arrowsmith cuts rats in the Biology department where he has virtually set up housekeeping.



MARCIA SIEGEL

Arts and Science History

E-52 Bus. Staff, Cauldron, Bus. Mgr., Augustan Soc., Blue Hen.

Amiable, soft-spoken, always ready to help others . . . Research work in history is her plan for the future.

ROBERT H. M. SIMON

"Bob"

Engineering Chemical

V.-Pres. Math Club, Treas. A. I. Ch. E., Treas. Hillel Council, Tau Beta Pi

Plays the piano and oboe in his spare time . . . looking forward to research and developmental work.



MARY E. SIMPSON

Home Economics Foods

Home Ec. Club, Review, Advert. Staff.

Her dry wit and smiling eyes attract many friends . . . perseverance and energy . . . orange blossoms . . . food research or demonstration.

SAUL SITZER

Arts and Science History

Alpha Epsilon Pi, V.-Pres., Hillel Council, V.-Pres., U. W. R. F., Intramural Sports

A P-47 pilot with the National Guard . . . interested in welfare work . . . spends leisure hours discussing current events . . . Plans to enter the business world.



MARGARET SLUIZER

"Peggy"

Education Elementary

Review, Blue Hen, Cauldron, Hillel, V.-Pres., Chorus.

The Philadelphia story on Peg is that she is going to be a teacher . . . Pupils will be impressed with her amiable disposition and fine sense of humor.



MARIJANE SMITH



WARREN BUFFINGTON SNOW
"Captain"

Engineering

A. I. Ch. E., Rifle Club, Photography Club, Intramural Sports.

Chemical

Weight lifter first class . . . hard working engineer . . . woman-shy but very popular with his colleagues . . . easy going and easy to get along with, the Captain should make an outstanding production man in industry.

FRED SPOSATO



GORDON A. ST. MARY



ANTHONY E. STALLON



ROBERT E. STEWART

KATHERINE BREWER STONE
"Kitty"

Arts and Science

Chorus.

A kind and most amiable person . . . loves to sing, sew, and eat. Present dream—to become a nurse or a laboratory technician.

Biology



JOHN B. STOPYRA

Engineering

Debating, Tennis.

Chemical



HENRY J. STRENGE
"Hank"

Arts and Science

Biology

Strong, silent type . . . would rather peer through a microscope than eat . . . some day M.D.

SARA ANNE SWING
"Sally"

Arts and Science

Psychology

Soph. Class, Pres., S. G. A., Sec., May Court.

"The secret to success is constancy to purpose."

FRED CONWELL TAMMANY
"Buckets"

Engineering

Electrical

Sigma Nu House Mgr., Tennis Team, A. I. E. E., Sec.

His religion is the golden rule . . . Loves music, but hopes to make a living as an engineer.

PHILLIP REYBOLD TATNALL
"Phil" "Tat"

Arts and Science

Band, Orchestra, Choir, Adv. R. O. T. C.

Economics



ONETIA ELIZABETH TAWES
"Neet"



Arts and Science

E-52, Chorus, A Capella Choir, Warner Soc, Chrm., May Day Com.

History

Sparkling personality—vim, vigor, and vitality! Present interests—music, and dramatics; future occupations—research and marriage.

ALFRED S. TAYLOR
"Scotty"

Engineering

A. S. M. E.

Mechanical

The Smiling Boy . . . consistently cheerful . . . buckles down on a job.

ROBERTA LOIS TAYLOR

EDWIN R. THOMAS
"Ed"

Engineering

Intramural Sports, A. S. M. E.

Mechanical

Interested in sailing and traveling—hopes to go to South America to work.



FRANK BANCROFT THOMAS
"Senator"

Agriculture

Aggie Club, Band, Theta Chi Frat., Orchestra, Basketball.

Horticulture

The "Senator" is always the man who lends small things such as postage stamps, pencils, and even advice and a helping hand to those who ask.

GLORIA ANN THOMPSON

Arts and Science

Freshman Class, Sec., Dramatics, Review, May Court, Cheerleader.

Social Science

Neither rain, sleet nor snow can perturb Gloria's neat and attractive self . . . Like the mail she always comes through.



MARY FRANCES TIERNEY

Arts and Science

Review, E-52, Newman Club.

Pert, cute, and charming . . . plenty of determination . . . has what it takes to succeed in the maelstrom of psychology.

Psychology



EDMOND W. TOBIN, JR.

"Bud"

Engineering

Review, Brown Hall Soc. Chrm., I. S. A., Soc. Chrm., Newman Club, Soccer, Two O'Clock Club, Cardinal, Ed.

Conscientious and a hard worker . . . His roommates say he is hard to get up in the morning . . . Dick and Dot will testify that he has a weakness for pinball machines.

Mechanical



DOLORES A. TONDAT

"Tonni"

Arts and Science

Dramatics, Internat'l Rel. Club, V.-Pres., Treas., Pres., U. W. R. F., Co.-Chrm., May Court.

"Nothing ever succeeds which exuberant spirits have not helped to produce."

History

ELIZABETH L. TRAINER

"Tish"

Arts and Science

Student Council, Blue Hen, Canterbury Club, Chorus.

"Where the willingness is great, the difficulties cannot be great."

English

FRED A. TRIMBLE, JR.

Arts and Science

D. S. C. A., V.-Pres., Pres., Treas., Review Circ. Ed., I. S. A.

Dependable, considerate, cooperative . . . plans to be a minister soon . . . "regular feller."

Soc.—Psc.—Phil.

JEAN LOUISE TULLER

Arts and Science

E-52, Bus, Mgr., Orchestra, Band.

Eating, her favorite pastime . . . lover of music—usually seen with her flute . . . charming personality . . . blues chaser . . . "Where do we go from here!"

Psychology





JOSEPH T. TYNDAL

RICHARD G. VINCENT
"Dick"

Engineering

Band, Fr. Football, A. S. M. E.

Mechanical

His flare for things mechanical even include model railroads. His ambition—a Cadillac convertible and a \$10,000 a year income.

MILTON S. WAHL
"Milt"

Arts and Science

Rifle Team, Review, Soc. Com., Hillel Council.

Biology (Pre-Med)

Milt has just two interests—one is known to all, the other is medicine.



ROBERT B. WALLS

SHEILA EILEEN WALSH

Arts and Science

Band,

English



THOMAS M. WALSH
"Wheezie"

Engineering

Basketball, Mgr., Football, Dramatics, Gold Key, V.-Pres., A. S. M. E., Newman Club, Theta Chi Frat.

Mechanical

Wheezie has a breezy personality plus brains.

ALICE MARGARET WEBB

"Peg"

Home Economics

Home Ec. Club, Pres. Home Ec. Advis. Brd., Soc. Com., Chorus, Band.

Her pleasant personality, conscientiousness, and interest in her work make Peg a well-liked member of the campus . . . plans to teach Home Ec. after graduation.

Education



GLORIA R. WEISER

"Glor"

Education

Social Com., Blue Hen, Fresh. Prom Com., Jr. Prom Com., Chorus, Spanish Club, Hillel.

Sparkling personality . . . loads of ambition, pep, and willpower . . . friendly and cheerful, she should make a good teacher.

Elementary



CHARLES W. WILKENS

FRANK W. WILKINS, JR.

"Wilk"

Engineering

Theta Chi, Pres., I. F. C., Sec., Treas., A. I. E. E

Electrical

PHILIP WILLIAMS, JR.

"Phil"

Arts and Science

Intramural Sports, Wrestling, French Club, Canterbury Club

Phil is interested in social, educational, and civic problems . . . a pleasing personality and keen intellect are responsible for his popularity.

English



HARRIET O. WILSON

"Fussy"

Home Economics

Chorus, Forum, Home Ec. Club.

Known for her fits of giggles and as a ready fourth for bridge, she has generosity plus . . . always willing to lend a helping hand.

Foods

ROBERT H. WINTER**"Wint"****Engineering**

Chorus, Sigma Nu Frat., Treas., House Mgr., Comm., I. F. C., Sec., A. S. M. E., Jr. Prom Bus Mgr

Mechanical

Outstanding engineer . . . charming speech . . . friendly manner. His superior leadership spells success for the future.

ANNE MARIE WISE**"Red" "Torchie"****Education**

Cheerleader, Co-Capt., May Day Com.

English

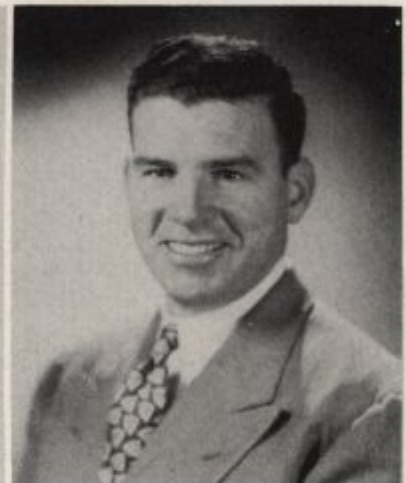
This human dynamo was undoubtedly responsible for most of the school spirit at all the games. Although she plans to teach English for a while, she's keeping time to Lohengrin.

G. EILEEN WISE**"Lindy"****Arts and Science**

Chorus.

Psychology

Cute and charming . . . blue eyes and a friendly smile . . . loves hiking, skating, and skiing . . . Plans to go hostelling in Europe.

ROBERT V. WITSIL**"Wit" "Rupe"****Arts and Science**

Basketball, Archery.

Business Administration

Generous, industrious, impulsive . . . His red head is most likely to be found under the hood of that yellow car. May be erecting Witsil-built homes in the future.

JOSEPH M. WOODS**"Joe"****Arts and Science**

Soccer, Review, Sigma Phi Epsilon, Delalphan, Ed., E-52, Newman Club, Blue Hen.

English

Lean, razor-jawed . . . conscientious, witty, and dynamic in personality . . . aficionado of Horace, Ibsen, W. H. Auden, and cheeseburgers . . . the Delalphan's own William Randolph Hearst.

VIRGINIA LEE WOOTTEN**"Jinny"****Arts and Science**

Science Club, Math Club, Chorus, W. A. A.

Chemistry

Pleasing sense of humor . . . known for her infectious grin . . . interested in sports and knitting . . . making plans for a career in chemistry.

LOIS WRIGHT

PETER J. ZANNONI
"Pete"

Engineering **Chemical & Mechanical**
Kappa Alpha Frat., Pres., V.-Pres., I. F. C., Sec., Treas.

The backbone of K. A. is known for his sense of humor . . . although he hails from the Pa. coal region, he plans to go to South America to make a living.



FRANK H. BALLING, II
"Hot Tires"

Engineering **Electrical**
Review, Delapzan, Bus. Mgr., Sigma Phi Epsilon.

The inimitable "Hot Tires" . . . songster and zany pianist who's found the lost chord . . . scintillating, ingenious . . . tall, dark, and—well why go on? . . . wedding bells soon.

HANS P. DROBECK
"Pete"

Agriculture **Agronomy**
Aggie Club, Soc. Chrm., Intramural Sports, Kappa Alpha Frat.

Compatible and jovial . . . with the graduation of the class of '48 goes one of the stimulating personalities on campus.


VICTOR D. WOOD
"Vic"

Arts and Science **Chemistry**
Basketball, Chorus, Band.

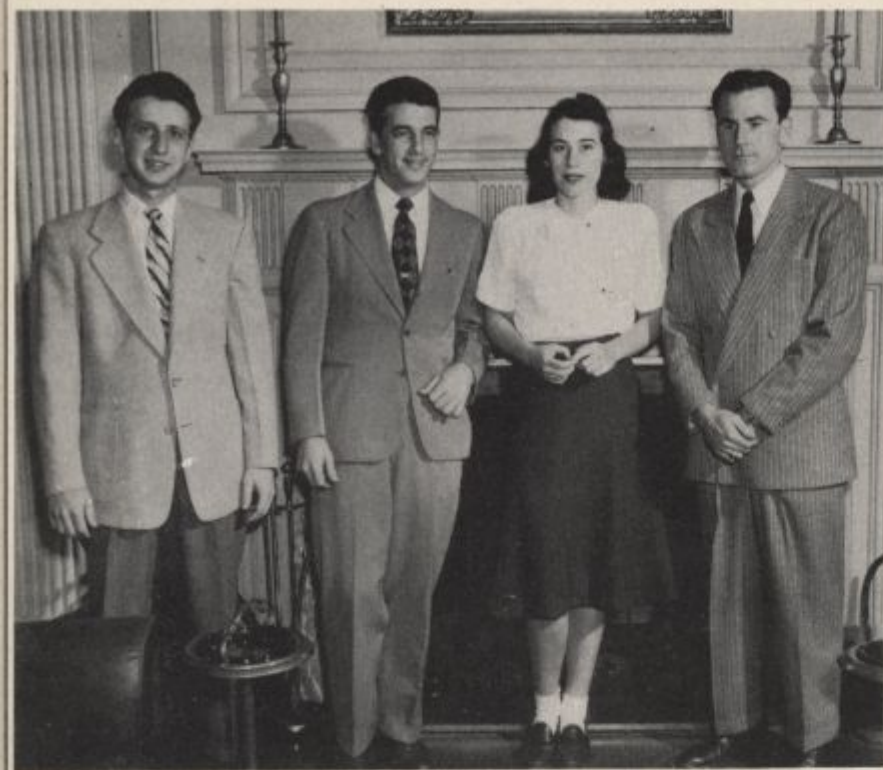
One of the most likeable—and altitudinous—men on the campus is tall, lanky Vic who has a smile for everyone and lot on the basketball.





A black and white photograph taken from an elevated position looking down onto a university courtyard. The scene is filled with people walking in various directions. Long, dark shadows from large trees frame the scene and stretch across the paved ground. In the foreground, a group of people is gathered near a small, dark, rectangular structure, possibly a trash can or a small building. The background shows more trees and a building in the distance. The overall atmosphere is one of a busy, open campus space.

Looking Down on U. Hall Center

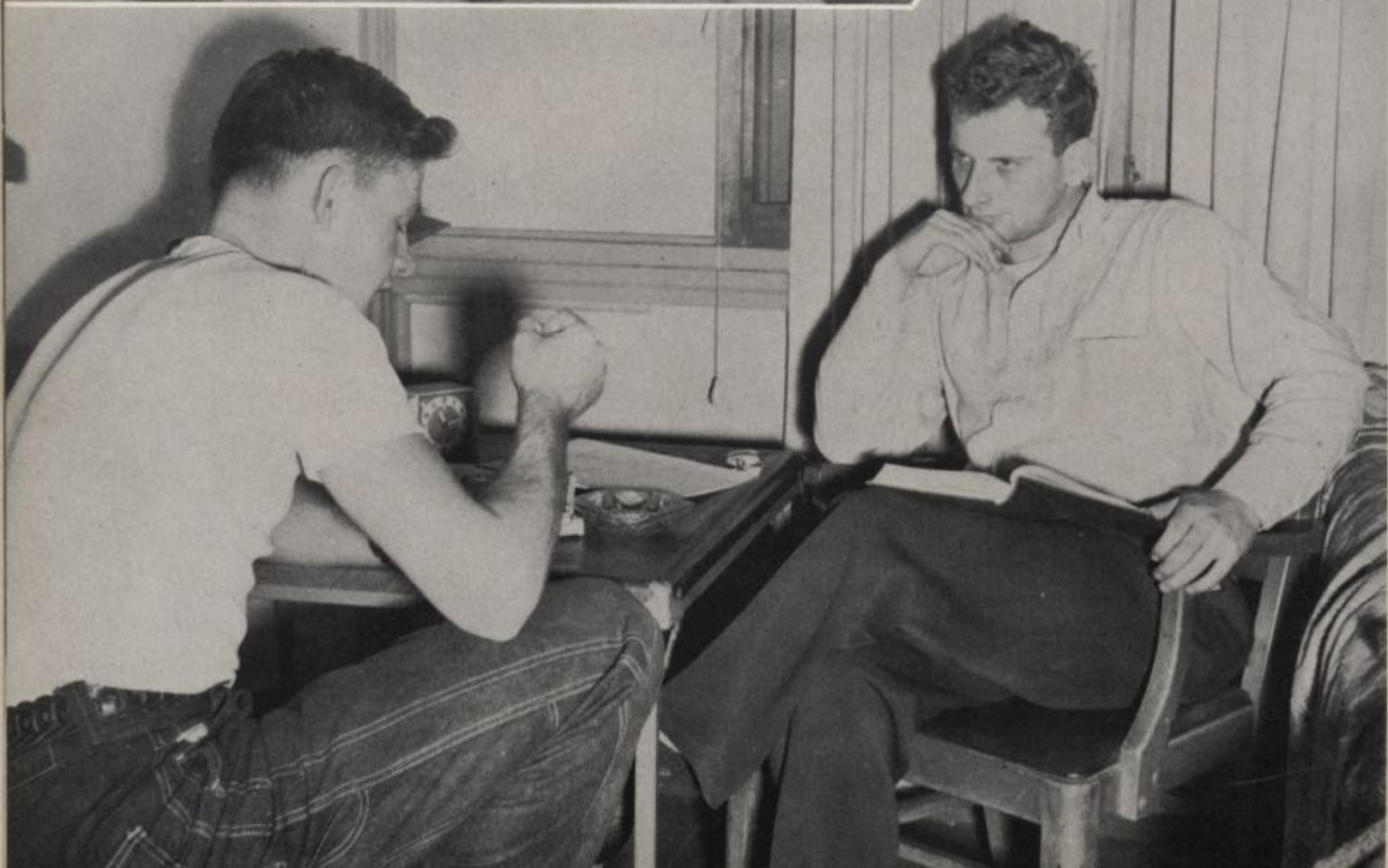
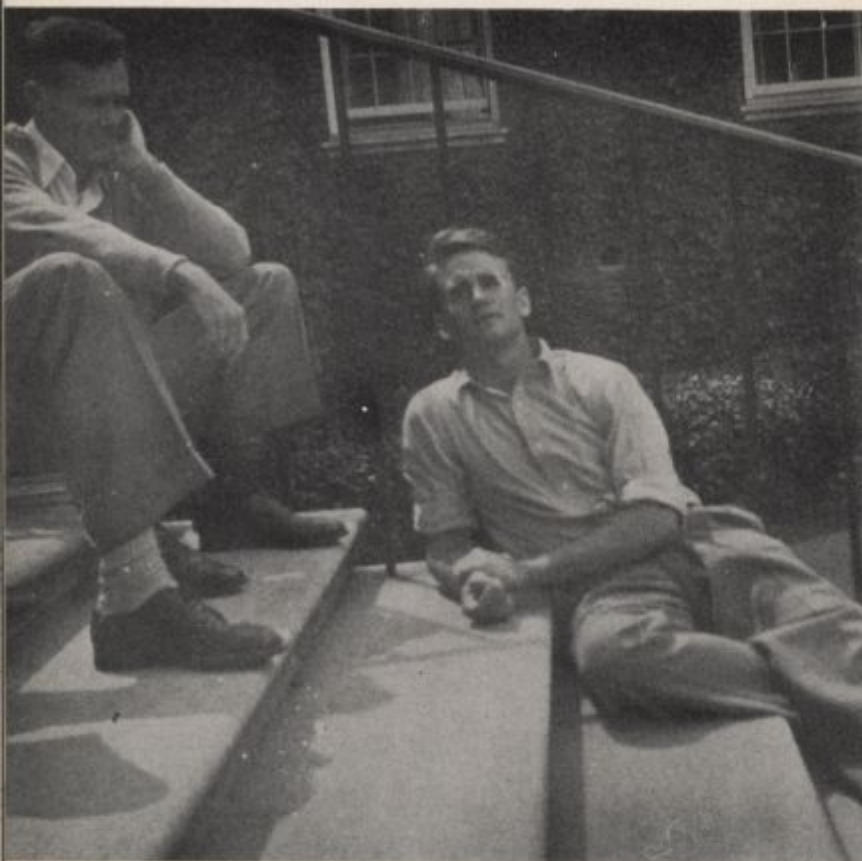


THE JUNIORS

President Jack Walls
 Vice-President Joan Tatnal
 Secretary Woodrow Branner
 Treasurer Sol Balick











THE SOPHOMORES

President	Sam Talucci
Vice-President	Dottie Mathews
Secretary	Joan Stetzer
Treasurer	Jim McFadden











THE FRESHMEN







