

Library

SATURDAY  
JUNE  
FIFTH

GRAND  
ALUMNI  
DAY

# THE REVIEW

UNIVERSITY OF DELAWARE

VOLUME 42 NUMBER 25

NEWARK, DELAWARE, MAY 21, 1926

PRICE 10 CENTS

## MAY DAY EXERCISES TOMORROW

### Compulsory Subscription Issue Voted Upon at Delaware College

**Students Vote "Yea"**

At the meeting of the student body, on Tuesday morning, a rising vote was taken on whether or no the men at Delaware College desired compulsory subscription to "The Review." The vote for compulsory subscription was unanimous!

After a stirring address by Herbert Murphy, '26, past Business Manager of the paper, who stressed the financial difficulty of the periodical and the fact that if the printer's bill is not obliterated, that the paper would no longer be published, the students arose and pledged financial support to "The Review."

This action will be taken before the trustees and an effort will be made to have compulsory subscription at both colleges, payable at registration under the direction of the Business Administrator.

With the students at Delaware College pledging their two dollars in the fall, the college periodical will once more be "put upon its feet" and it is hoped that a similar action on this question of compulsory subscription will be taken at the Women's College.

### Sports Severely Shocked on Saturday

**Haverford Tomorrow**

Four athletic teams of the University of Delaware were defeated in their respective sports last Saturday afternoon. The baseball nine succumbed before the fifteen hits of St. Johns 8-2. Numerous errors by the Delaware infield accounted for several runs. Captain Huck Kramer and his fellow tracksters were decisively trounced by Johns Hopkins in a dual meet in Baltimore. The tennis team lost its second match of the year to the racket wielders of Franklin and Marshall. Every match was lost to the invaders. The rifle team found the competition too keen at Annapolis and finished sixth in a field of eight.

Three more games will finish up the baseball schedule for this year. The team travels to Haverford tomorrow, crosses bats with Ursinus on the twenty-fourth, and entertains the Alums. (Continued on Page 2.)

### Orientation Days For Incoming Freshmen

There is a rumor on the campus that in the fall the entering Freshman class with register a few days before the other classes. This will be part of the new orientation plan of Dean Dutton. The idea of an orientation week for Freshmen is now in vogue in many colleges and two weeks ago Lehigh University adopted the plan.

There was some hint that no upper classman will be allowed on the campus during these "Freshman" days but whether or no this is true could not be ascertained. If this policy is drastically carried through it would be a good idea to disallow any fraternity pledgemen to participate in the registering of

### HARPER ELECTED! Heads Student Council For Next Year

**James Mannix '26 Retires**

"Wally" Harper, the popular Philadelphia boy, was elected as head of the Student Council at the annual elections in Wolf Hall on Tuesday. Harper was elected over Donahue, Grant and McKelvey. The new president has served three years on the Student Council Board and is well qualified to guide the organization in the fall.

In the battle for the Junior class representation in the student body, Creamer and Loveland won by slight margins over Roemer and Poole. The Freshmen class will be represented by Reese, who defeated Burton at the elections.

The new Student Council will consist of Harper, '27; Donahue, '27; Grant, '27; McKelvey, '27; Wilson, '28; Creamer, '28; Loveland, '28; French, '29; Reese, '29; and members of the incoming Freshman class of 1930 will have a representative.

Mannix, '26, the retiring president, has done much to advance the social life at Delaware College. One of the best accomplishments was the adoption of the Senior Lounge Room. Although the idea of a Pan-Hellenic council did not issue from the Student Council channels this year, it is expected that action on this matter will be taken next year.

### Some More Champs!

The tournament champions of 1926 are now announced by the press agent of the Faculty Club: Straight Pool, P. B. Myers; Rotation Pool, Capt. Whittemore; Bottle Pool, H. R. Baker; Chess, Capt. Whittemore! Checkers, T. D. Smith. The tournaments were in charge of A. E. Tomhave. At the present time there is a tennis tournament in charge of R. W. Jones.

### Frat Men Elect

The different fraternities on the campus have had their house elections, and the following men have been elected to head the respective houses: Kappa Alpha, John Poole; Sigma Nu, Vance Mendenhall; Theta Chi, Robert McKelvey; Sigma Phi Epsilon, Mark Donohue; Phi Kappa Tau, Edwin Beatty; Sigma Tau Phi, Myer Ableman.

### "Mikado" at Longwood

**Sigma Phi Epsilon Frat Sponsors Rare Treat**

On next Saturday evening, at Longwood, the famous Savoy Company of Philadelphia will present "The Mikado" under the auspices of the local chapter of the Sigma Phi Epsilon fraternity. This is an annual affair for the local organization and in past years the thespians from Philadelphia have presented to the Wilmington audiences the finest of operatic offerings.

The Savoy Company has attempted the famous Gilbert and Sullivan comic opera on a scale seldom undertaken by an amateur company and with the fine stage in the beautiful Longwood gardens, this theatrical event should draw many music lovers together with the exodus of college students who hear these comic operas every year. Tickets and information may be had from any member of the Sigma Phi Epsilon fraternity.

### College Editors Elect

#### Lehigh Student Chosen Head of Journalists

Swarthmore, May 15.—At the annual convention of the Inter-collegiate Newspapers' Association at Swarthmore College there were forty-five delegates, representing fifteen college and university chapters in the Middle Atlantic States.

The following officers were elected today for the coming year: President, J. Gordon Risdale, editor-in-chief of the Brown and White, of Lehigh; vice-president, Frances Cramer, of Cedar Crest; treasurer, George Rex, of Gettysburg; and secretary, George F. Kennedy, business manager of the Brown and White, Lehigh.

### Baxter Comes Thru

#### Former Delawarean Stars at Penn

Philadelphia, May 15.—Paul Baxter, '27, former University of Delaware athlete, finished second in the high jump event on Franklin Field. Dern, a brother of the football player, copped the event with a mark of 6 feet, 2 inches. Theta Chi fraternity finished third in the large entry race, the Inter-fraternity Relay. These events were part of the annual intramural meet. Baxter will be eligible for the varsity next year.

### Frat Trousers Call Fire Chief

Evanston, Ill.—(By D. U. Collegiate Press.)—The fire chief and the greater part of the fire apparatus answered a call to the Sigma Delta Fraternity House at Northwestern University last week.

Only a pair of smouldering military pants that had been put to boil were found.

### Society Editorship For W. C. D. Student

Katherine Barnard, '26, will succeed Frances Marsh as Society Editor of the Wilmington Morning News next month. Miss Barnard has been doing publicity work for the numerous college activities of the Women's College for the past two years.

### ANNUAL FESTIVAL IN GROVE; GEORGIA WIGGIN, '26, TO BE MAY QUEEN

#### LARGE CAST PERFORMS

Tomorrow afternoon, at two o'clock, Red Men's Grove will be transformed into a place of fairy-like beauty. Women's College will give its annual May Day festival. It is to be a splendid Court Scene and a Ballet of the Four Seasons. The arrangement of the program is as follows:

The Brownies and Fairies, amid dancing, prepare the throne for the Queen and places for her attendants.

The Herald proclaim the arrival of the Court.

Then enter the May Queen, followed by her Maid of Honor, the four Duchesses and their attendants. A dancer, impersonating Spring, crowns the Queen with flowers, and the Court is then seated. Father Time, in order to please the Queen of May, presents a Ballet of the Seasons. He first ushers in Spring who, with her Fairies and Butterflies, dance before the Court. Then Summer, with her May-pole dancers, endeavor to please the Queen. Autumn, scattering red and gold leaves, makes her appearance, followed by the Harvesters. Then Winter, with the Skaters, enter and dance. The Ballet ends!

The Queen, being pleased, rises and takes her departure. She (Continued on Page 4.)

### "Sarg" Davis Prepares For Plattsburg

"Sarg" Davis will depart soon for Plattsburg where he will make arrangements for the annual exodus of the college men to this summer vacation site. While in Plattsburg "Sarg" will draw up the map of the village for the local boys, arranging the various points of interest for the benefit of the Delaware men. The worthy sergeant is one of the most prominent men at Plattsburg and all men attending the camp should get in touch with the official guide before departing.

### Math Club Meets

Dr. George H. Hallett, a professor of mathematics at the University of Pennsylvania, gave a very interesting talk at the Mathematics Club meeting on Thursday afternoon, May 13. He developed his subject, "The Modern Theory of Correspondence," by explaining the meaning and uses of cross ratios. Dr. Hallett spoke in such a natural manner, using the simplest mathematical terms possible that his audience were easily able to follow the lecture.

### New Dramatic Society Elects New Members

On last Saturday, the Dramatic Honor Society at the Women's College "The Puppets" elected several new members for this year. Every member of the Dramatic Society who has succeeded in making the required number of points is eligible to become a "puppet." Miss Keely, honorary member of this society, has been a great aid to the organization.

### Compulsory Subscription Issue Voted Down By Financial Board

#### Trustees Vote "Nay"

In spite of the fact that the maintenance fee has been raised from forty to sixty dollars a year, the Financial Board representing the university trustees, decided at a meeting the past week that compulsory subscription to the college paper would be entirely out of the question at the University of Delaware.

The board contended that of the college paper cannot be supported each week, then it must be published bi-monthly or monthly. Although this action somewhat disheartens the members of "The Review" staff, attempts will be made in the fall for a grand campaign for financial assistance. The fact that the (Continued on Page 3.)

### "Ballot Letter" New Collegiate Time-Saver Fad

Berkeley, Calif.—(By D. U. Collegiate Press.)—"Compact Correspondence for Cramming Collegiates."

That is the name of a new kind of postcard which has been arranged by two California university coeds to save busy students the time and effort required to write home during exams.

By merely checking a few of the alternate phrases offered, it is possible to compose a filial note to Dad or Mother saying, "I need cash," "I spend my spare time studying," and "Thanks for the listerine."

On the other hand, if the hard working student hasn't time to write to "Her," he may send one of these cards, checking items such as "I need sympathy," "I spend my spare time longing for you," and "I am very sorry I am all alone."

### Major Underwood To Be Married June 5

On being questioned as to the truth of the following statement which appeared in the Philadelphia newspapers the early part of the season:

"Mr. and Mrs. Charles D. Carey of Cheyenne, Wyoming, announce the engagement of their niece, Miss Elinore M. Fillebrown of Bryn Mawr, Pa., to Major Arthur R. Underwood, United States Army."

Major Underwood admitted that the Philadelphia reporters were accurate. His wedding is to take place on the fifth of June.



## The Review

The Official Student Newspaper of the University of Delaware

Founded in 1885. Published every Friday during the college year.  
Subscription price \$2.00 a year, delivered anywhere in the United States. Single copy, ten cents.  
All business communications should be addressed to the Business Manager, and all other correspondence to the Editor-in-Chief.  
Entered at the Newark, Delaware, Post Office as second class matter.

Member of the Intercollegiate Newspaper Association

### STAFF

#### Editor-in-Chief

James William Grant, '27

#### Women's College Editor

Linda Bassett, '27

#### Delaware College Editor

Leslie W. Moore, '28

#### Assistant Editors

Lillian Benson, '28

Joseph Craven, '28

#### General Staff

Russell Pippin, '27  
Cortland Eyer, '27  
Margaret Ellis, '27  
Grace Ellison, '27  
Harry Lynch, '28

Frank Hoopes, '28  
Francis Roemer, '28  
Josephine Roscoe, '29  
Samuel Miller, '28

Edward Spicer, '29  
Bernard Nobis, '29  
Louise Turner, '27  
Samuel Handloff, '28

William Lank, '29  
Joseph Hitch, '29  
Rebecca Hobson, '29  
Joseph Turner, '29

#### Business Manager

Roy F. Corley, '28

#### Assistant Business Managers

Katherine Ady, '27

W. B. Derrickson, '28

#### Circulation Managers

Christine Baker, '28  
Bertha Scrivan, '27

Hattie McCabe, '28  
P. Blank, '29

R. S. Baker, '28  
H. W. Lynch, '28

I. Quillen, '29  
J. Day, '28

#### Faculty Adviser

Dr. W. O. Sypherd

The numerous changes being brought about by the faculty concerning social activities and academic rulings are being viewed with much alarm by many of the students on the campus. The abolishing of the Kangaroo Court has been discussed both pro and con in the fraternity houses and in the dormitories; the induction of the new cut system, the rigidity of the rejuvenated Arts and Science course, the collateral reading program and the augmentation of the Maintenance fee have all been very severely criticized.

### FAITH

We must, however, remember that the persons who formulate these regulations are better versed in educational problems than are we. We must realize that the faculty is considering the future students of the University of Delaware and that we, the present student body, consist of a transitory element in the advancement of the University of Delaware as a greater educational institution. We must place our faith in the actions of the group of men who are formulating, in their opinion, regulations that will benefit us as well as the betterment of the university.

The social life in college takes in a wide scope but in its largeness has degenerated into a dull, trite and jaded merry-go-round of hackneyed occurrences. One dance follows another in great rapidity. We come in contact with the same faces at every social affair and listen to the blare of the "same old" music amidst the "same old" surroundings. At every dance we buy the usual amount of Dennison's crepe paper and try to disguise the dance hall as a replica of a Halloween party of yesterday. No effort is made to enliven a social event with, however, the possible exception of some brave alumnus bringing "home" a gill or so of some forbidden beverage.

A change of some sort in the schedule of social events is needed. The panacea is not an easy one to suggest; perhaps, the acquisition of a nationally known orchestra together with the importation of a few vaudeville acts at the dances would help matters. Why not a cotillion for a change? Why not an old-fashion cake-walk? Somebody suggests a Night Club dance. Why not a cabaret dance?

At St. John's, Johns Hopkins, Washington College and Vermont, the different organizations vie with one another in producing the most unique social event. That is just what we need here—a little variety. An ounce of pep must be injected! Do away with this panegyric sedateness.

The debate team has finished its schedule of arguing whether or no the United States should be saved from Volsteadism and during the year they accomplished one outstanding thing: the discovery of a member of the faculty who would contribute financially as well as morally to the organization in order that it might exist on the campus. This messiah of the Debating Club was Professor Mathews.

Several times the debaters were on the verge of cancelling debates with other colleges, owing to the lack of finances, when Professor Mathews produced the needed funds and the debates were held. This spirit of generosity is appreciated by the enterprising orators and they sincerely hope that the students next year will at least give the club moral support.

### Sports Severely Shocked

(Continued from Page 1.)

ni on the fifth of May. Vic Litchenstein will be back at his old position at shortstop beginning tomorrow. Vic's steadiness should help to eliminate some of the errors that have marred the last few games.

With a record of two wins and

three defeats, the track team will bring its season to a close on Sunday and Monday at the annual Middle Atlantic States Meet which will be held at Lehigh this year. Coach Forstburg will take six men on this trip. The probable selections are: Tremaine, Steele, Garret, Lohman, Rose, Prettyman, Kramer, and Loveland.

### Lecturer Returns

Frederick J. Libbey, propagandist for the prevention of war from Washington gave several fine lectures on international complications before the various history and sociology classes on Thursday. Mr. Lib-

bey clearly outlined the condition of Europe as a temporary situation with ever-changing borders, a hotbed for a future war, and stressed the fact that education is one of the greatest means of establishing international good will.

### Lovett's Furniture Store

Full Line of

DESIRABLE FURNITURE

Main Street

Newark, Delaware

G7

### NO MORE DIZZY SPELLS

For sick, upset stomach, or constipation there is nothing like old-fashioned Goff's Bitters in a little water. Take this before meals every day and you won't know you ever had a stomach. Watch your appetite and pep come back in no time. Tongue no longer coated. Constipation gone. From Mr. H. C. Flack, Chambersburg, Pa.—"Stomach trouble had left me run down in health and had lost 35 pounds. I used your Bitters, and people now say I look like a new man, and everybody is asking me what I have been taking. Goff's Bitters are very popular with all the railroad men here."

FOR INDIGESTION AND CONSTIPATION

**GOFF'S BITTERS**

The CRAFTSMEN at KELLS know and practice the laws of fine printing



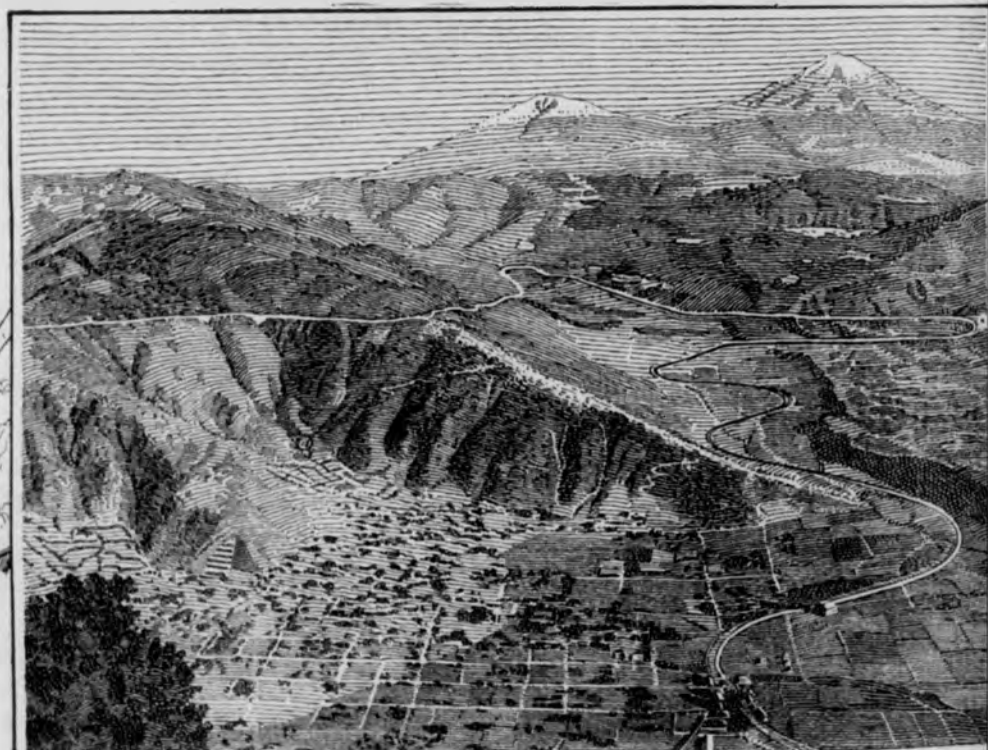
Where Printing is an Art

Newark  
Delaware

## NORDQUIST SON & SHORT

INC.

911 ORANGE ST.  
WILMINGTON, DEL.



Where two steam locomotives formerly puffed and strained to pull a 360-ton freight train up the steep slope of Maltrata incline, two electric locomotives haul a 660-ton train with power to spare.

## Electricity levels the Mountains

In Mexico, romantic land of pretty señoritas and languorous minstrelsy, practical American engineers have harnessed streams so that mountains may be leveled.

The winding thirty-mile Maltrata incline on the road from Vera Cruz to Mexico City is now electrified. Ten electric locomotives replace twenty-three steam engines. The electrics haul twice the tonnage of the steam locomotives—and in half the time, with obvious benefits to traveler, rail-roader, and shipper.

Yet Maltrata is but an example of electrical progress. For electricity is conquering the grades of railroads and of industry alike, the world over.

Impressive, no doubt, but still modest when compared with the possibilities of electricity in years to come. And it remains for college-trained men, with trained capacity for initiative and leadership, to become ambassadors for further electrical conquests in foreign lands.



The General Electric Company required but eighteen months to electrify Maltrata incline—locomotives, power plant, transmission equipment complete. Engineering skill, backed by vast manufacturing facilities, has enabled G-E to serve humanity in many ways.

A series of G-E advertisements showing what electricity is doing in many fields will be sent on request. Ask for booklet GEK-1.

**GENERAL ELECTRIC**  
GENERAL ELECTRIC COMPANY, SCHENECTADY, NEW YORK



### Examination Schedule

Schools of Arts and Science, Engineering, and Agriculture

Hours	Friday May 28	Saturday May 29	Monday May 31	Tuesday June 1	Wednesday June 2	Thursday June 3	Friday June 4
	B 10-216 B 14-216 Bu 12-S 1	CE 26-6 E 2a-WH E 4-30 E 6-WW E 8-WH E 72-WH EE 2-E Ho 26-210	Agr 4-206 Agr 6-206 Ast 8-5 CE 16-C H 38-28 Ho 20-210 M 4a-30 M 4a-WW M 6a-5 M 6a-WW M 6b-27 M 12a-6 M 12b-5 M 18-WW ME 6-M Soc 2-216	Agr 2-206 A I 18-210 A I 22-210 CE 22-30 E 34-28 EE 4-E Geol 32-216 H 2a-WW H 2c-6 H 22-27 H 30-5 H 36-6 H 40-26 H 44-25	Agr 12-108 AI 30-206 E 36-25 Ho 16-210 ML 2-28 ML 4a-WW ML 4d-30 ML 4e-30 ML 6a-6 ML 22-27 ML 24-26 ML 62-S1 PP 2-216	AI 20-216 B 6-206 C 26-307 C 34-210 Ed 32-6 Ed 34-6 Ed 48-5 Phy 2-WW	CE 24-C H 6-WW
9 to 12	C 2 } WW C 22 6 C 42 6 CE 10-C CE 24-C E 50-5 Ed 42-27 EE 8-E Ho 24-210 ME 2-M ML 66-S2						
1 to 4	AI 28-206 B 2-216 Bu 2-WW Bu 4-WW C 44-307 CE 20-6 EE 6-E Ho 32-210 ME 24 M ME 52 M ME 54 M ME 56 M ME 58 M	Mil 2a-WW Mil 4a-30 Mil 6a-5 Mil 8a-26	AE 2-216 AE 4-216 B 8-WW B 12-210 Ba 2-WW Ed 38-27 Hyg 4-WW ME 4-M Psy 2-5 & 6	Agr 2-206 Agr 10-206 AI 32-216 Bu 14-27 Bu 16-28 C 36-307 CE 18-C H 4-WW H 14-6 H 34-6 ME 30-M	Agr 8-206 AI 34-216 AL 2-6 AL 4-6 AL 8-6 AL 28-6 C 24-307 CE 6-C Phil 2-WW	Agr 14-206 AI 24-216 E 58-28 Ps 6-P Psy 32-WW	

#### Compulsory Subscription

(Continued from Page 1.)

present staff has paid the publisher more money than any previous "Review" organization in a single year will strengthen the college journalists' efforts to clear the debt next year.

Mr. Wilkinson, Business Administrator, is pushing "The Review" drive forward together with Dr. Sypherd and with the entire student body and faculty subscribing to the local courier at the beginning of the fall semester, the college paper will for another year appear on the campus every Friday afternoon.

#### BLUE HEN TEA ROOM

Lunch and Afternoon Tea  
**Dinner**  
GIFT SHOP

Phone 328

**Dr. P. K. Musselman**  
DENTIST

Newark, Delaware

Office Hours:  
9 to 5 Daily  
Tues. & Fri., 6 to 9 P. M.  
Sat., 9 to 12

#### GREENWOOD BOOK SHOP

309 Delaware Avenue  
Wilmington, Delaware  
BOOKS LEAFAX GIFTS

When you say  
**SHEAFFER**  
that  
**PAINTER**  
"Nuff Sed"

**Sol Wilson**  
Men's Outfitter  
NEWARK

#### HIGHEST QUALITY

**JOB PRINTING**  
DANCE TICKETS  
DANCE PROGRAMS  
POSTER CARDS

24 Hour Service

ESTIMATES FURNISHED

**DELAWARE LEDGER**  
PRINTING & PUBLISHING CO.  
Newark, Delaware

PHONE 337

**WARNER McNEAL**  
Coal, Lumber, Lime,  
Cement & Dairy Feeds

#### BOOKS STATIONERY

Gifts Novelties  
Party Decorations and Favors

**BUTLER'S**  
Inc.

421 Market Street  
WILMINGTON DELAWARE

#### SCHOOL OF LIBRARY SCIENCE

**The Drexel Institute**  
PHILADELPHIA, PA.

A one year course for college graduates only. Trains librarians for all types of libraries.

**DEL. ARMY AND  
NAVY STORE**  
Clothes for the Cadet  
411 Market Street  
WILMINGTON DELAWARE

**GO TO MACKEY'S**  
for your  
Drinks, Sandwiches  
Hot Chocolate  
Open Every Night Until 12.30

**3 handy  
packs  
for 5¢**

Look for  
it on the  
dealer's  
counter



**WRIGLEY'S  
P.K.** More  
for your  
money  
and  
the best Peppermint  
Chewing Sweet for  
any money 613



#### The Store of Quality

By featuring quality products translates the element of chance into a well defined sense of certainty—DRESS and EVENING Clothes by

**HICKEY-FREEMAN**

**JAS T. MULLIN & SONS, Inc.**

Wilmington, Delaware

*A House of Service—For All People*



Suits, Top Coats, Overcoats of superior character. Perfectly tailored in correct fashioning, \$35 and upward.

**JACOB REED'S SONS**  
1424-26 CHESTNUT ST.  
PHILADELPHIA

*Pick a pipe  
and pack it  
with good old  
P. A.*



TALK about "alliteration's artful aid" . . . the printer certainly raided the "p" box that trip. But let that go! The advice is just as serious and sound as though it were couched in the careful diction of an English prof.

Just get yourself a jimmy-pipe and fill the bowl to the brim with Prince Albert. Light up, and let the first fragrant whiff tell you that no other tobacco is like P. A.—or can be! Cool and sweet and fragrant, P. A. has everything a fellow ever wished for in a smoke.

P. A. can't bite your tongue or parch your throat. The Prince Albert process settled that in P. A.'s freshman year. Get yourself a tidy red tin of Prince Albert today. The first load-up will tell you why pipes are so fashionable among young men today.

**PRINCE ALBERT**  
—no other tobacco is like it!

P. A. is sold everywhere in tidy red tins, pound and half-pound tin humidors, and pound crystal-glass humidors with sponge-moistener top. And always with every bit of bite and parch removed by the Prince Albert process.



© 1936, R. J. REYNOLDS TOBACCO COMPANY, Winston-Salem, N. C.



## Navy Sinks Locals

On Wednesday afternoon Delaware lost a spirited contest to Navy at Annapolis by the score of 11-6. The local team threatened throughout the game to snatch the lead from the future admirals, but the heavy hitting against Crossgrove was too great. Next week Delaware faces Ursinus, the team headed by Derk, the pitcher who turned back the University of Pennsylvania two weeks ago. "Lefty" Pryor will pitch his last inter-collegiate game against the Collegeville nine.

## Annual Festival

(Continued from Page 1.)

is followed by the Court and the

## Privately Located

## EUBANKS' REFINED

## Barber and Bobbe Shoppe

For Ladies and Gentlemen

CONVENIENTLY SITUATED

ODD FELLOWS' BUILDING

2nd Floor

LADIES	GENTLEMEN
Latest creation in Shingling	Stylish Collegiate Cuts
Curling by Appointment Only	Shaving, Massaging
Scalp Treatment	Shampooing
	Scalp Treatment

## The Sanborn Studio

Portrait and Commercial

PHOTOGRAPHERS

404 Market St. Wilmington, Del.

dancers in the ballet—Old Father Time bringing up the rear.

The main participants in the May Day festival are:

May Queen—Georgia Wiggen, '26;  
Maid of Honor—Anne Rose, '26;  
Senior Duchess—Margaret Satterfield, '26;  
Junior Duchess—Katherine Adey;  
Sophomore Duchess—Dorothy Bond;  
Freshman Duchess—Agnes Thoms;  
Old Father Time—Rachel Boyd, '29;  
Spring—Helen Simon, '26;  
Summer—Helen Cohen, '26;  
Autumn—Frances Malcolm, '28;  
Heralds—Mary Jamour, '29, and Evelyn Elliot, '29.

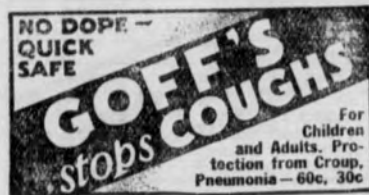
## Forty Fellows Follow

## Foreign Study Plan

Next Wednesday the Foreign Study Committee will issue the 1926 Foreign Study Bulletin. It will contain complete information in regard to the courses abroad and the arrangements for the coming year's trip. The list of students selected from Delaware and the other American colleges to make up the 1926 Foreign Study Group will appear in the Review in two weeks. It is now being made up by the Foreign Study Committee. Over

forty students will be selected under the new international plan.

Pettyjohn's Pharmacy  
Where College Men Deal  
Milford, Del.



CG-9

## Straw Hats

We have the habit of calling the turn on style. This season's selection of straws again bears us out. Every style you want—all correct—is here in probably the greatest collection of straws you've ever seen. Sennits, milans, leghorns and Panamas of the finest fibres. And priced to give values that you appreciate.

\$3 to \$10

MANSURE & PRETTYMAN

DU PONT BUILDING



Hanark Theatre : Monday and Tuesday  
May 24 and 25

JOHN GOLDEN'S TRIUMPH

"LIGHTNING"  
ADDED COMEDY

COMMUTERS SPECIAL LUNCH

—AT—

POWELL'S RESTAURANT

GOVATOS AND LAGGES

where all the College Boys eat  
Stiltz Building - - Newark, Del.

MILLER BROTHERS

IF IT'S FURNITURE, IT'S MILLER'S  
Ninth & King Sts. Wilmington, Del.

Better Times Around the Corner

He is an optimist—always looking forward to better times. When they come, however, he is unprepared. He hopes, but he doesn't save. Hopes are good as far as they go, but a growing savings account is needed to back them. How's your account.

FARMERS TRUST COMPANY  
NEWARK, DELAWARE

Newark Trust & Safe Deposit Co.

Newark, Delaware

INTEREST PAID ON ALL DEPOSITS

2% - - - On Check Accounts

4% - - - On Savings Accounts

RHODES'

DRUGS

ALL COLLEGE SUPPLIES

STATIONERY

SUNDRIES

TEXT BOOKS

DRUG

CANDIES

SODA WATER

PENNANTS

CIGARS

CIGARETTES

STORE



Into the making of this one cigarette goes all of the ability of the world's largest organization of expert tobacco men. Nothing is too good for Camels. The choicest Turkish and Domestic tobaccos. The most skilful blending. The most scientific package. No other cigarette made is like Camels. No better cigarette can be made. Camels are the overwhelming choice of experienced smokers.

WHEN famed men return. And by dancing firelight they relate their stories of old—have a Camel!

For Camel helps all men who rise proudly to rise higher and more jauntily. Camels never harm or tire your taste, no matter how plentifully you smoke them. You'll never find more friendly flavor than you get in Camels.

So this night when those from long ago return to think of the roads that join. As you see in their past your future unfold, then zestfully taste the smoke that's prized by the world's experienced.

Have a Camel!



Our highest wish, if you do not yet know Camel quality, is that you try them. We invite you to compare Camels with any cigarette made at any price.

R. J. Reynolds Tobacco Company  
Winston-Salem, N. C.