

## SPECIAL EVENTS

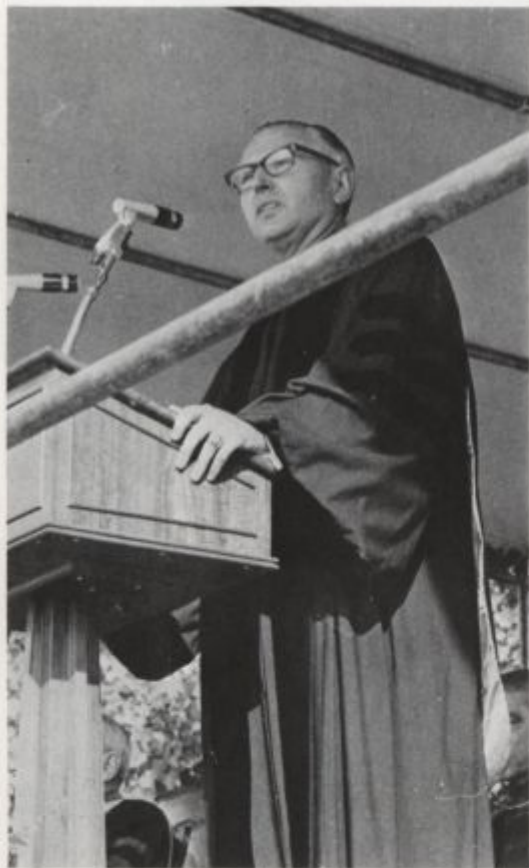
Student designers add final artistic touches to prize-winning floats.  
Nervous anticipation accompanies selection of Homecoming Queen.  
Prices rise for student entertainment in community.  
Coed coalition enacts Men's Economic Recovery Program.  
Delaware campus begins to attract top entertainers.  
Electrifying soul concert triggers undulating applause.  
Drama and comedy highlight stage performances.  
University choral concerts provide chance for cultural sublimation.  
Fraternity activities excite female hopes and desires.  
Censors cut risque lines from fraternity playbills.  
Goldies Doorknob opens door to contemporary entertainment.  
Couples enjoy quiet tête-à-tête in Howff's subdued atmosphere.  
Student resistance impedes flow of static electricity.  
Termination of professors' contracts becomes issues of question.  
WHEN power breaks through "Radio Free Newark."

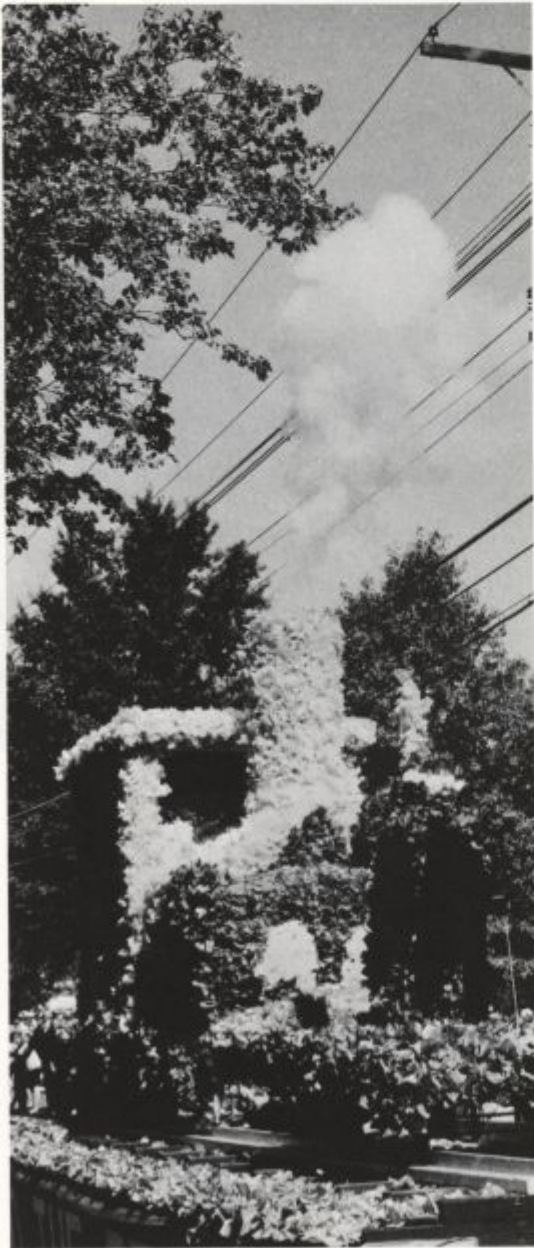


Orientation provides  
indoctrination  
in waiting . . .









Patience in waiting  
brings rewards  
and diversions . . .



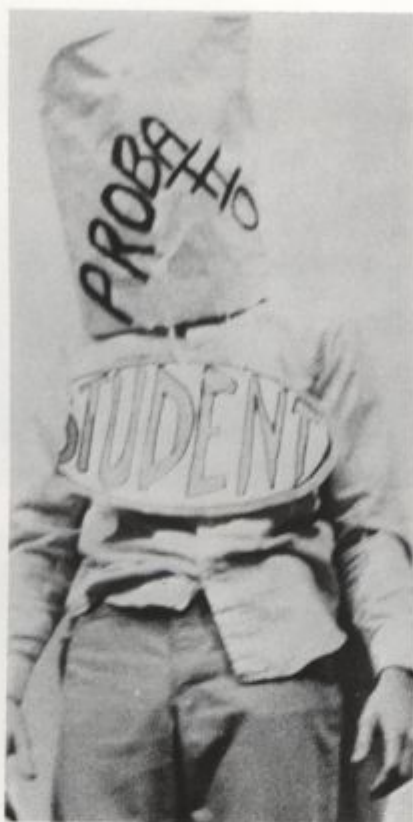


Reggie Pearce









Patience tested  
by rebuttals leads  
to confrontation . . .

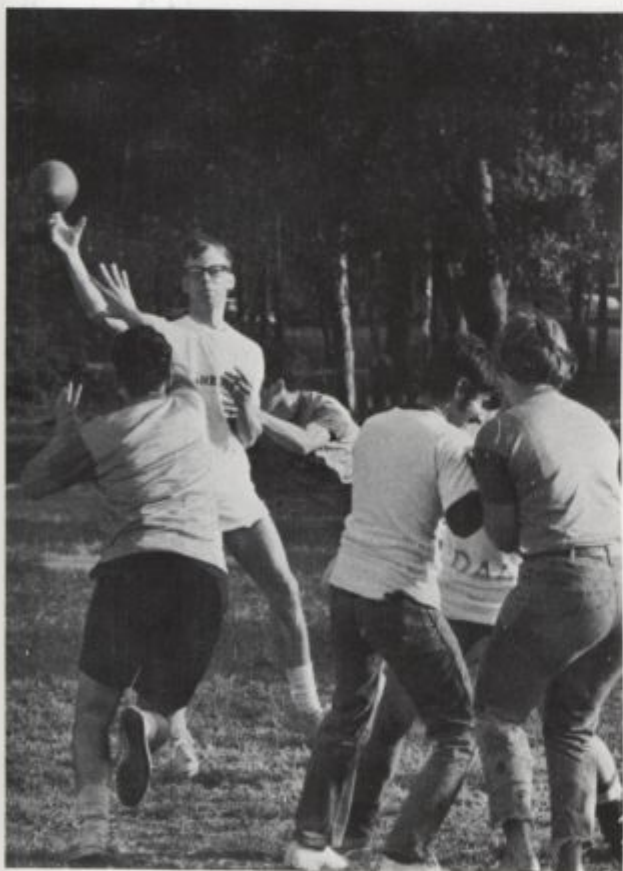


Confrontations often  
provide frivolity  
and excitement . . .

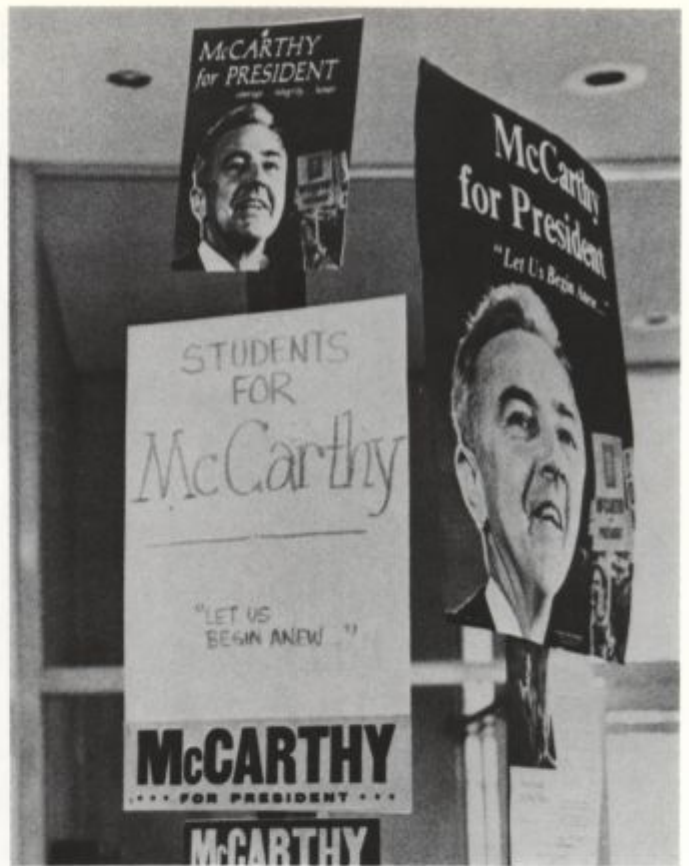


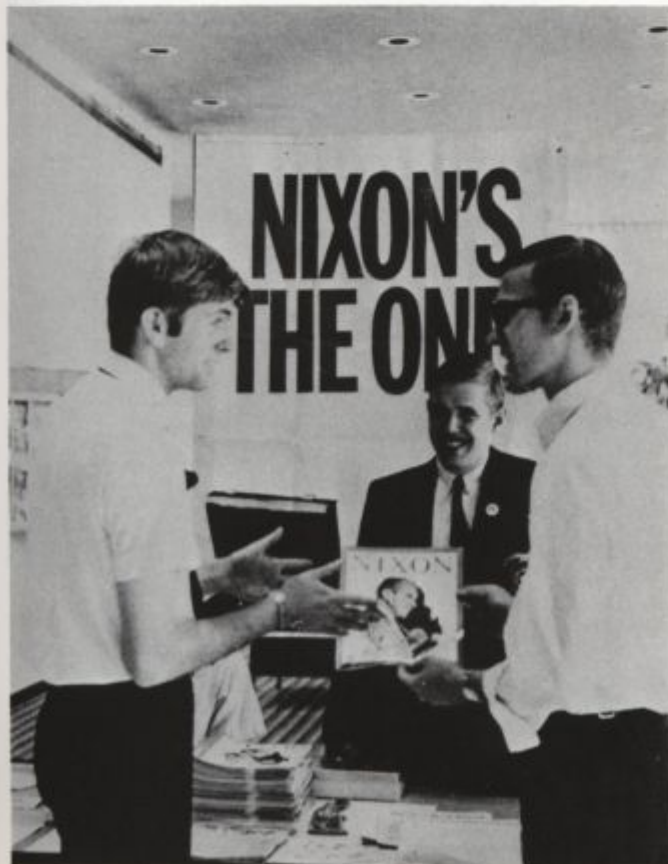
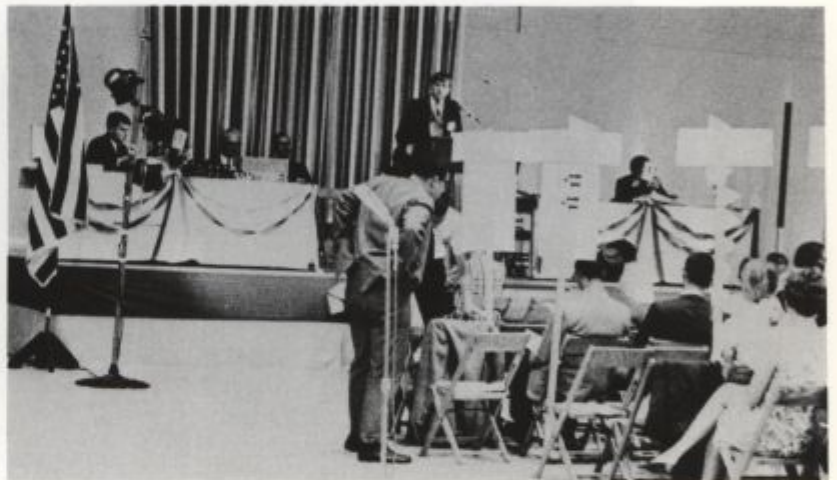
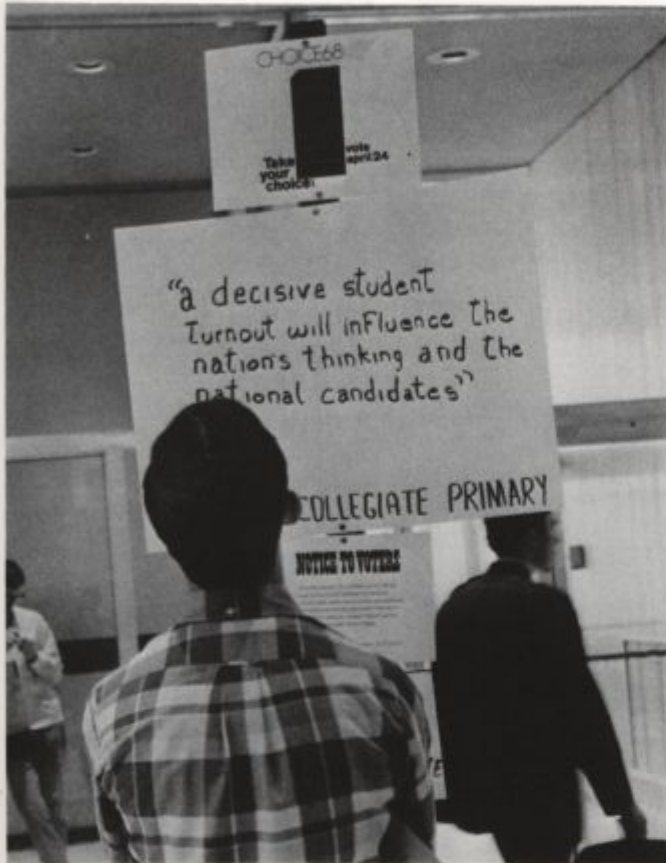
Carol Scrutchfield











Excitement of primaries  
and conventions  
peaks in November . . .





Sandy Martorelli

December's Christmas  
warmth becomes  
June in January . . .



#### R.O.T.C. SWEETHEARTS

*First Row:* Sandy Revis, Brenda Shrum, *President*; Jane Timmons, Susan Carpenter, Linda Hynson, Dale Coulbourn. *Second Row:* Diane Keyser, *Vice-President*; Gail Brandenberger, Kathie Mattie, *Secretary*; Jackie Cusumano.







Months of  
preparation climax  
in finished product . . .



## GOLDIE'S DOORKNOB

SYMPHONIUM - CINEMATIQUE

— tonight —



DAVID & DAN

folk singers

FROM THE COFFEE HOUSE  
CIRCUIT AND DETROIT'S RAVEN  
GALLERY, THE LIVING END AND  
POISON APPLE . . .

Admission 25¢

BRING YOUR COFFEE OR COKE

CONCERTS

at

9:30 - 11:00 p.m.

FRIDAY - NOVEMBER 1<sup>st</sup>  
Caesar Rodney Dining Hall

SATURDAY - NOVEMBER 2<sup>nd</sup>  
Dover Room

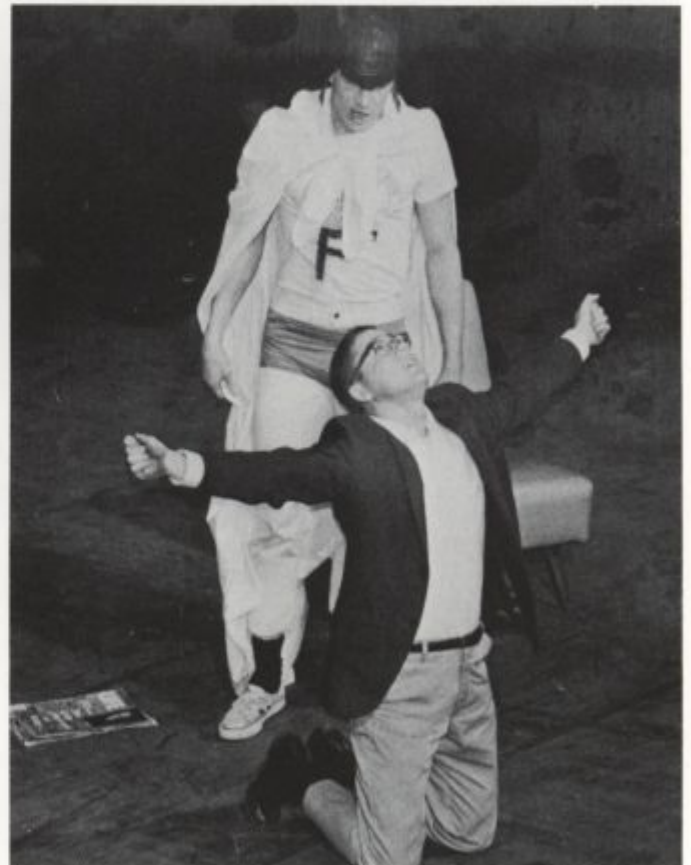


Productions  
Illustrate creativity  
and deeply





Productions  
illustrate creativity  
and depravity . . .











Creativity culminates  
in Grubby May  
and Balmy June . . .